

# Mondeo





*“She’s always fancied European designers.”*

It’s one of those days at the office when it’s wall-to-wall meetings. But a booking for dinner with friends at that new Spanish place makes the day a little more bearable. And just as he’s hitting the ‘shut down’ button on the computer, the boss asks for “5 minutes.” It’s half an hour before he gets to the car. He knows she’ll be watching the clock so there’s time to be made up. No problems. The Mondeo handles the hustle’n’bustle without raising a sweat, or missing a beat.

Home just in time. The slightly frosty mood is quickly thawed once he slides in her favourite CD and turns the volume up a few notches. The heated sports style leather trim seats\* work their magic, too. Of course, it’s easy to warm to the Mondeo. She has always had an eye for European designers, while he was convinced just 20 minutes into the test drive. A meeting of the minds? A meeting of the hearts? Definitely.

Mondeo Zetec sedan shown.

\*Alcantara/leather seat trim with variable heated front seats standard on Mondeo XR5 Turbo only. Napoli leather trim seats with variable heated front seats available as an option on Zetec and TDCi models.



*“The diesel engine is so economical.”*

“Thank God it’s Friday” – four of the greatest words in the English language. Especially when the golf clubs are loaded into the boot. Escaping to the beach house has been hard to squeeze into the diary over the past month. The old saying is, “half the fun is getting there.” In the Mondeo it’s all the fun. He’s always considered himself a bit of a driver, so those last 20km of bends and curves before pulling into the beach house are like an end of week reward, and a chance to put the Mondeo’s dynamic suspension through its paces. But this time he’s called “tails” and she gets to have all the fun. The stresses of the working week quickly fade, as do the lights of the city in the rear view mirror. She flicks the cruise control and lets the 2.0 litre Duratorq turbo diesel engine with its 6-speed automatic transmission quietly purr along. And thanks to the economical diesel engine, by the time they pull into the driveway back in the city on Sunday night, there’s still enough fuel in the tank for a few trips to work. In the meantime, they share a smile, click their minds into neutral for a while and simply enjoy the drive.



*“Every little detail, carefully considered.”*

If only everyone in the cinema could control the temperature. As it turns out, the cinema's temperature is more of a talking point than the movie. She says it was too cold. He didn't particularly notice as he munched his popcorn. Either way, driving home and everybody is happy. That's because the Mondeo doesn't favour the rational over the emotional. It's a car that has been engineered no less for women than it has for men. And vice-versa. On the one hand, she loves the fact that if she's feeling too cold the dual zone climate control\* allows her to vary the temperature on her side only. And she's impressed how the car itself does so much of the thinking. Like rain-sensing wipers.\* He on the other hand, likes the idea that every little driver detail has been carefully considered. Total control is at his fingertips so all he needs to do is sit back and contemplate why German engineering is so damn good. Music? Well, she thinks the Sony six-stacker CD audio system\* (complete with 8 premium speakers, mind you) gives that real 'front row feeling'. He thinks she's absolutely right.

Mondeo XR5 Turbo shown.

\*Not available on Mondeo LX.

No more fumbling with the keys in the ignition. The Mondeo XR5 Turbo features a unique **Keyless Start Button** (shown above) that lets you know exactly what you are in for. Press, watch it glow and you're ready for another exhilarating drive.

*“The worldly good looks don’t come at a price.”*

Golf would have to be the most frustrating game ever invented. Well it certainly feels like it today. Of course, there’s always next weekend. Even after a disastrous day on the fairway, wandering through the car park afterwards gives them both cause to smile smugly to themselves. That’s because as the golf clubs are loaded into the Mondeo’s boot they cast their eyes over some of their friends’ luxury cars. Sure, their Mondeo looks very much at home parked alongside the European marques, but it isn’t just the sleek lines. Some quick calculations remind her the Mondeo’s price tag affords them a few more golfing holidays compared to their playing partners. It’s funny, but heading home, relaxing back into the comfy heated leather trim seats,\* she’s nearly forgotten about that afternoon’s scorecard. Nearly.



17" Alloy wheels^ standard on Mondeo Zetec (sedan model shown) and TDCi. 18" Alloy wheels^ standard on Mondeo XR5 Turbo.

\*Alcantara/leather seat trim with variable heated front seats standard on Mondeo XR5 Turbo only. Napoli leather trim seats with variable heated front seats available as an option on Zetec and TDCi models. ^Set of 4.



Mondeo XR5 Turbo shown.



Mondeo features Ford's advanced Human Machine Interface (HMI) system. Controls and displays for the driver are cleverly integrated to enable the driver to easily monitor and control selected functions using buttons located on the steering wheel – including trip computer, clock, information messages and vehicle setup features. The HMI is designed to be intuitive, so you'll have fewer distractions while on the road, and more time to enjoy your Mondeo. Shown is the Ford Convers+ premium colour cluster display standard with the HMI on Mondeo XR5 Turbo.

*“This car does the thinking for you.”*

After spending all day in the office with technology that either jams or never seems to perform when it's needed most, there's a distinct irony as he drives home with Jagger and Richards telling him they "can't get no satisfaction." Still, it makes a traffic snarl considerably more pleasant. The Mondeo's technology has lots of ingenious ways to turn the cabin into a high-tech comfort zone. She's particularly smitten with the hands-free phone kit\* equipped with Bluetooth® technology and voice control, which is fully integrated into the car's audio system. No more cords and wires everywhere. And these days she can't live without the sound system being MP3 compatible. Now taking her music collection away for the weekend is simply a matter of throwing her iPod^ into the handbag. Even those tricky little spots at the local delicatessen are straightforward thanks to front and rear parking sensors.\* Ah, finally technology is truly making life easier.

\*Optional on all models. The Bluetooth® word mark and logos are registered trademarks owned by Bluetooth SIG, Inc. and any use of such marks by Ford Motor Company is under licence. ^Connection cable sold separately. iPod is a trademark of Apple Inc. \*Not available on Mondeo LX.



Mondeo XR5 Turbo interior shown.



Ford Mondeo ensures the ultimate in protection for you and your passengers with extensive safety features as standard across the range:

**Feature Points (refer to illustration)**

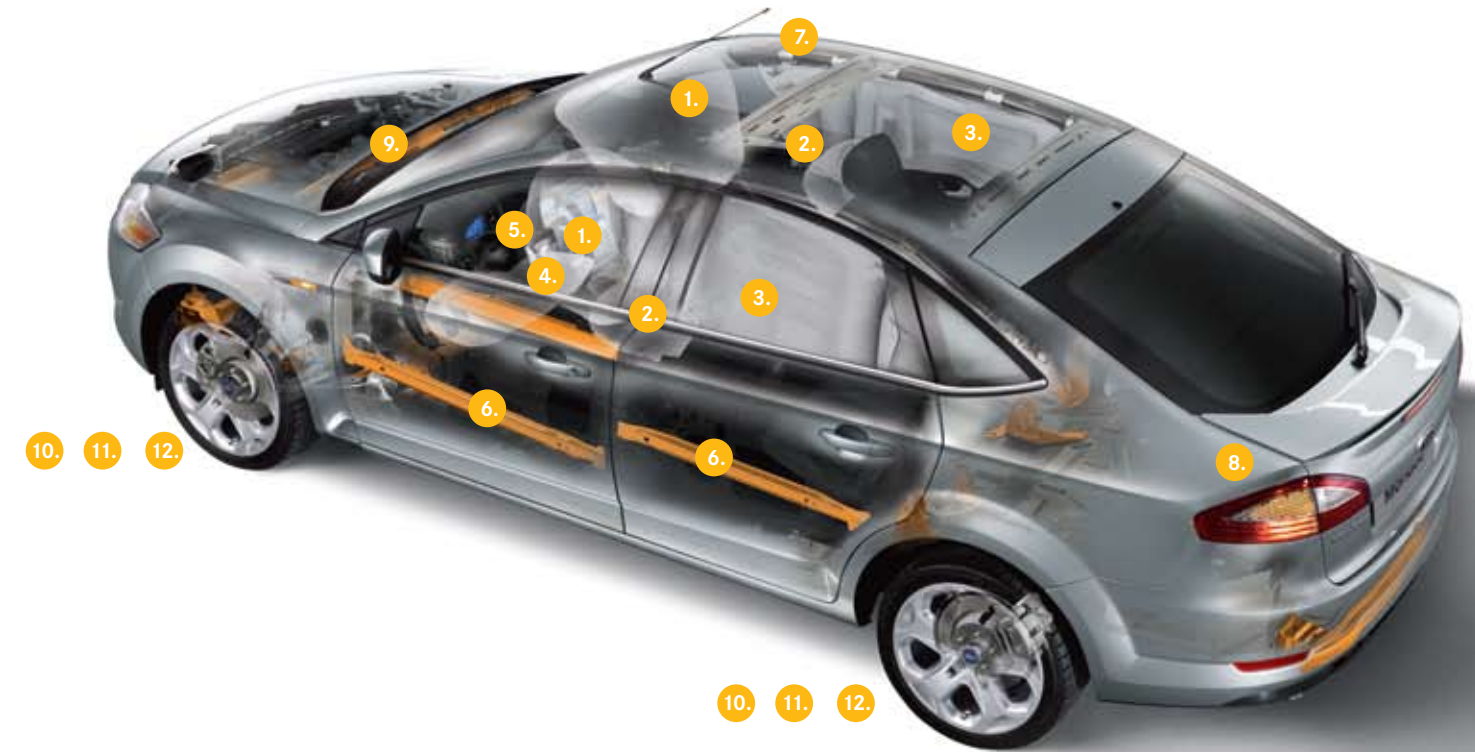
1. Driver and front passenger airbags
2. Side front airbags
3. Side curtain airbags
4. Driver's knee bolster airbag
5. Collapsible steering column and pedal intrusion prevention system
6. Side impact door beams - front and rear
7. Rigid steel safety cage
8. Hazard lights activated under heavy braking
9. Engine compartment cross-beam and energy-absorbing subframe
10. Anti-lock Braking System (ABS) with Electronic Brakeforce Distribution (EBD)
11. Dynamic Stability Control with Emergency Brake Assist and Traction Control
12. Front and rear disc brakes

**7 airbags as standard.**

A driver's knee bolster airbag complements the driver and front passenger airbags, side front airbags, and side curtain airbags.

Overseas model shown.

*“A car that not only looks good, but looks out for you, too.”*



Risotto is a dish that's quite labour intensive. All that constant stirring. It'd be rewarding with all that hard work to enjoy it with a nice glass of wine. Uh-oh, empty wine rack. She takes over the stirring while he does the quick dash to the local wine shop. Contemplating a white or a red when suddenly someone edges out from the stop sign a little too far. Using Mondeo's anti-lock brakes, he quickly and safely pulls up with room to spare. They sheepishly reverse as he ponders what might have been. Life's full of surprises but when you're prepared for them you feel a whole lot better. He feels good about the fact the Mondeo is always looking after them, regardless of whether it's ducking out to the shops or heading down the highway, because well, you just never know when the unexpected will happen. Of course, he knows it's more than just the crucial things like the standard Dynamic Stability Control<sup>^</sup> and team of 7 airbags, including a driver's knee airbag and side curtain airbags for the front and rear that are there to help protect. There are also smart things you don't really notice until they happen. Like now, when it's just getting on dark, the lights come on automatically.\* Right now though, it's safe to assume the risotto is nearly ready.

<sup>^</sup>Dynamic Stability Control (DSC) is also known as Electronic Stability Control. \*Automatic headlights not available on Mondeo LX. Illustration shows an overseas model.



*“They might be little ‘finishing touches’  
but they add so much.”*

If the renovation of the kitchen is anything to go by, agreeing on what accessories to choose for the Mondeo could be more challenging. How about some practical things, like a waterproof boot liner for muddy cycling gear? Or, maybe a boot scuff guard to protect their Mondeo when unpacking the golf clubs? The wish list is getting longer but the first thing they agree on is where to start – at the top. He starts with carry bars and a bike carrier for his mountain bike, especially now that it’s a regular weekend passenger to the beach house. Tick. Even though it’s he who can’t read maps, she knows a portable satellite navigation system will be a welcome addition to the Mondeo’s existing technology. Okay, time to take stock to finalise the selection. That’s the beauty of having so much choice.

Mondeo Zetec hatch shown with optional boot scuff guard.\*

\*Genuine Ford Accessory.

*“The choices and features are so attractive.”*



Mondeo Zetec hatch shown.



**Mondeo LX.** Beyond the eye-catching European good looks and German engineering, the Mondeo LX boasts a 2.3L Duratec 4 cylinder petrol engine with 6-speed auto, ABS, Dynamic Stability Control, 7 airbags, capless refuelling and 'follow-me-home' lighting.



**Mondeo LX Cruise Pack.** This optional extra elevates the Mondeo LX to another level of looks and driving comfort. Pack includes 16" Y-spoke alloy wheels,\* rear power windows, cruise control and leather wrapped steering wheel.



**Mondeo Zetec.** Powered by a German engineered 2.3L Duratec 4 cylinder engine with 6-speed automatic featuring Sequential Sports Shift, the Mondeo Zetec sedan and hatch are superbly equipped. In addition to the LX features, there's 17" alloys\* and fog lamps, while the dual zone climate control, cruise control, leather wrapped steering wheel and a Sony premium sound system with 6-disc CD player make the drive even more enjoyable. There's also the convenience of automatic headlights and rain-sensing wipers. Hatch model shown.



**Mondeo TDCi.** For spirited performance, lower emissions and remarkable fuel economy, look no further than the Mondeo TDCi sedan and hatch. Powered by an advanced 2.0L Duratorq 4 cylinder turbo diesel engine with 6-speed automatic featuring Sequential Sports Shift, the Mondeo TDCi also comes with 17" alloys\*, fog lamps, cruise control, leather wrapped steering wheel, dual zone climate control and a Sony premium sound system with 6-disc CD player and 8 speakers. Automatic headlights and rain sensing wipers are also standard. Sedan model shown.



**Mondeo XR5 Turbo.** German engineering meets breathtaking performance in the effortless 2.5L Duratec 20V 5 cylinder turbo engine with 6-speed manual. The Mondeo XR5 Turbo hatch boasts sports suspension and has all the Zetec features, plus a sports body kit, rear spoiler, 18" alloys\*, fog lamps and dual chrome tip exhaust. Inside, you'll find heated front seats, leather seat trim, leather wrapped steering wheel and gear shifter and a Keyless Start Button. There's also a unique premium colour cluster display that comes standard on the Mondeo XR5 Turbo.

\*Set of 4.

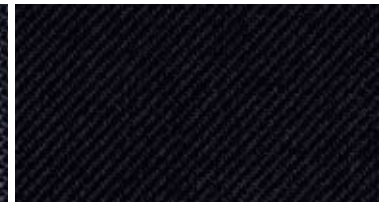
## Interior seat trims.

Mondeo's stylish looks are further enhanced with a range of contemporary and elegant seat trims. Boasting superior quality, craftsmanship and comfort, the Mondeo interior is sure to impress you and your passengers.

### Mondeo LX



**Seat facing** - Minute in Infinity Blue.

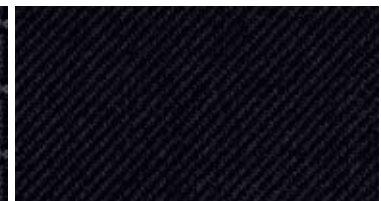


**Bolsters** - Twill in Ebony.

### Mondeo Zetec/TDCi (Standard)

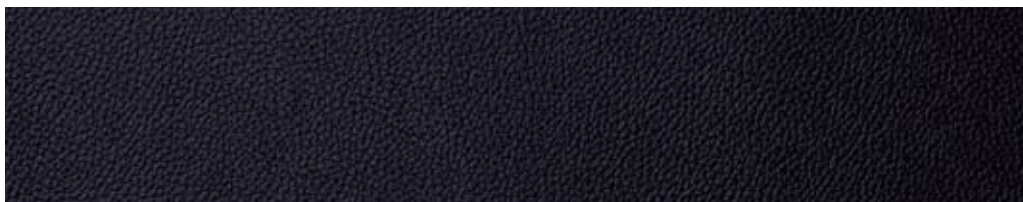


**Seat facing** - Ribbon in Ebony.

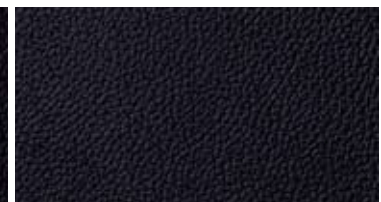


**Bolsters** - Twill in Ebony.

### Mondeo Zetec/TDCi (Optional)

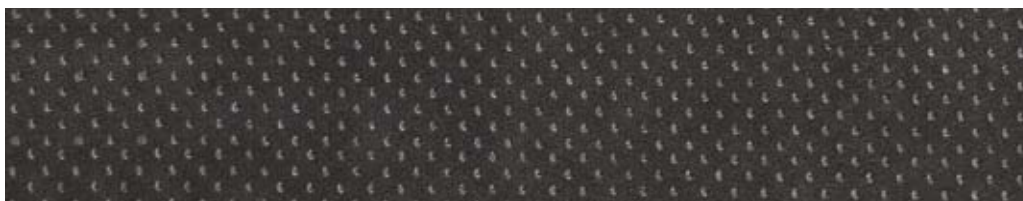


**Seat facing** - Napoli Leather in Ebony.

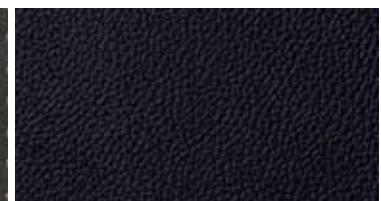


**Bolsters** - Napoli Leather in Ebony.

### Mondeo XR5



**Seat facing** - Alcantara Perforated in Ebony.



**Bolsters** - Napoli Leather in Ebony.

## Exterior colours.



Panther Black\*



Colorado Red



Frozen White



Blue Ambition\*\*



Thunder\*



Morello\*\*



Sea Grey\*



Stardust Silver\*



Tango\*



Chill\*\*



Ink Blue\*



Tonic\*\*

Mondeo Zetec hatch shown for illustrative purposes.

\*Prestige colour is an option that incurs an additional charge. #Discontinued from May 2008. †Available from June 2008. Every effort has been made to depict vehicle colours and trims as realistically as possible in this brochure, however some variation may occur due to printing limitations. See your authorised Ford Dealer to view actual colours.

## Specifications and options.

MODEL	LX / Zetec		TDCi	XR5 Turbo
Engine	2.3 Litre Duratec 16V		2.0 Litre Duratorq 16V Turbo Diesel	2.5 Litre Duratec 20V Turbo
Max power output ISO (kW/rpm) <sup>1</sup>	118 / 6500		96 / 4000	162 / 5000
Max torque ISO (Nm/rpm) <sup>1</sup>	208 / 4200		320 / 1750-2240	320 / 1500-4800
Engine size (cc)	2261		1997	2521
Bore and stroke (mm)	87.5 / 94.0		85.0 / 88.0	83.0 / 93.2
Cylinders	4 in line		4 in line	5 in line
Valve gear	DOHC		DOHC	DOHC
Fuel system	Electronic multipoint fuel injection		Diesel direct injection	Electronic multipoint fuel injection
Ignition	Coil on plug		-	Coil on plug
Cylinder head	Aluminium alloy		Aluminium alloy	Aluminium alloy
Engine block	Aluminium alloy		Cast iron	Aluminium alloy
Compression ratio	10.6:1		17.9:1	9:1
TRANSMISSION RATIOS	Durashift 6-speed automatic transmission with Sequential Sports Shift			Durashift 6-speed manual transmission
1st	4.15		4.15	3.39
2nd	2.37		2.37	1.91
3rd	1.56		1.56	1.27
4th	1.16		1.16	0.95
5th	0.86		0.86	0.78
6th	0.69		0.69	0.65
Reverse	3.39		3.39	3.23
Final drive ratio	3.33		3.33	4.00
FUEL				
Consumption – ADR 81/01 (L/100km – rounded) <sup>2</sup>	9.5		7.3	9.5
CO <sup>2</sup> emissions (g/km) <sup>2</sup>	227		193	227
Fuel	Petrol 91-98RON		Diesel	Petrol 95-98RON
Fuel tank capacity (litres)	70		70	70
Capless re-fuelling with mis-fuel inhibitor	S		S	S
SUSPENSION				
Front	Independent MacPherson struts, lower control arms with hydro-bushing isolated subframe and anti-roll bar			
Rear	Independent Control Blade multi-link system, isolated subframe with anti-roll bar			
KERB WEIGHT (kg) <sup>3</sup>	LX	Zetec	TDCi	XR5 Turbo
Sedan	1537	1562	1604	-
Hatch	-	1562	1604	1604
TOWING CAPACITIES (kg) Subject to State and Territory regulations				
Maximum towing capacity (braked)	1200		1600 <sup>4</sup>	1600 <sup>4</sup>
Maximum towing capacity (unbraked)	750		750	750
LUGGAGE CAPACITY (L)	LX / Zetec / TDCi - Sedan		Zetec / TDCi / XR5 Turbo - Hatch	
Seats upright (luggage volume)	535		528	
Rear seats folded	-		1448	
INTERIOR DIMENSIONS (mm)	LX / Zetec / TDCi - Sedan		Zetec / TDCi / XR5 Turbo - Hatch	
Front headroom	996		996	
Front legroom	1126		1126	
Front shoulder room	1448		1448	
Rear headroom	976		965	
Rear legroom	950		950	
Rear shoulder room	1433		1433	

<sup>1</sup>. All performance data for petrol models measured using 95RON fuel. <sup>2</sup>. These figures are obtained from controlled tests conducted to Australian Design Rule 81/01, which requires use of 95RON fuel for petrol models and are provided to assist you in comparing the fuel consumption and carbon dioxide (CO<sup>2</sup>) emissions of Mondeo with other vehicles. Note the actual fuel consumption you achieve will depend on many factors, including your driving habits, the prevailing conditions and your vehicle's equipment, condition and use. <sup>3</sup>. Approximate weights. <sup>4</sup>. When fitted with a Genuine Ford heavy duty towpack and load levelling kit.

EXTERIOR DIMENSIONS (mm)	LX - Sedan	Zetec / TDCi - Sedan	Zetec / TDCi / XR5 Turbo - Hatch	
Overall length	4844	4844	4778	
Overall width (excluding exterior mirrors)	1886	1886	1886	
Overall width (including exterior mirrors)	2078	2078	2078	
Overall height	1500	1500	1500	
Wheelbase	2850	2850	2850	
Ground clearance (minimum)	103	103	103	
Front track (front tread)	1589	1579	1579	
Rear track (rear tread)	1605	1595	1595	
MINIMUM TURNING CIRCLE (metres)	LX	Zetec	TDCi	XR5 Turbo
Diameter kerb-to-kerb	11.45	11.45	11.45	11.45
Turns to lock	2.71	2.71	2.71	2.71
PERFORMANCE				
2.3 Litre Duratec DOHC 4 cylinder 16V petrol engine	S	S	-	-
2.0 Litre Duratorq DOHC 4 cylinder 16V common rail turbo diesel engine	-	-	S	-
2.5 Litre Duratec DOHC 5 cylinder 20V turbocharged petrol engine	-	-	-	S
Durashift 6-speed automatic transmission with Sequential Sports Shift	S	S	S	-
Durashift 6-speed manual transmission	-	-	-	S
RIDE & HANDLING				
Four disc brakes - ventilated front and solid rear	S	S	S	S
Hydraulic power steering	S	S	S	S
Independent front suspension with MacPherson struts	S	S	S	S
Independent Control Blade multi-link rear suspension	S	S	S	S
Lowered sports suspension	-	-	-	S
16" x 6.5" steel wheels and 215/55 R16 tyres (set of 4)	S	-	-	-
16" x 6.5" Y-spoke alloy wheels with 215/55 R16 tyres (set of 4)	O <sup>5</sup>	-	-	-
17" x 7.5" Y-spoke alloy wheels with 235/45 R17 tyres (set of 4)	-	S	S	-
18" x 8" Y-spoke alloy wheels with 235/40 R18 tyres (set of 4)	-	-	-	S
16" steel mini-spare wheel with T125/90 R16 tyre <sup>6</sup>	S	S	S	S
Locking wheel nuts	O <sup>5</sup>	S	S	S
EXTERIOR				
Sedan	S	S	S	-
Hatch	-	S	S	S
Bumpers - body colour	S	S	S	S
Sports body styling kit (front and rear bumpers, side skirts, unique grille and fog lamps)	-	-	-	S
Rear tailgate mounted spoiler	-	-	-	S
Dual chrome tip exhaust	-	-	-	S
Chrome finish on upper doorline	-	-	-	S
Door handles - black	S	-	-	-
Door handles - body coloured	-	S	S	-
Door handles - body coloured with chrome trim	-	-	-	S
Chrome upper grille surround and black lower grille with black insert	S	-	-	-
Chrome upper and lower grille surrounds with silver painted insert	-	S	S	-
Chrome upper grille surround and silver painted lower grille with honeycomb insert	-	-	-	S <sup>7</sup>
Roof antenna	S	S	S	S
Tinted glass	S	S	S	-
Blue tinted glass	-	-	-	S
Body coloured, power adjustable heated mirrors	S	S	S	-
Body coloured, power adjustable heated mirrors with puddle lamps	-	-	-	S

S - Standard. O - Options that can be ordered before a vehicle is manufactured.

5. Available as part of optional Cruise Pack. 6. If the spare wheel rim or tyre size differs from the other wheels fitted the vehicle should be driven with caution and the standard wheel and tyre be fitted as soon as possible. 7. Comes with Anthracite painted lower grille when XR5 Turbo is specified with Frozen White or Stardust Silver exterior colour.

LIGHTING - EXTERIOR	LX	Zetec	TDCi	XR5 Turbo
Halogen, polycarbonate stone impact resistant headlights, side lights, rear fog light, reversing lights, and high mounted brake light	S	S	S	S
Auto headlights	-	S	S	S
Front fog lamps	-	S	S	S
Manual headlight levelling	S	S	S	S
'Follow-me-home' lighting	S	S	S	S
LIGHTING - INTERIOR				
Illuminated entry system	S	S	S	S
Courtesy light (delay and theatre dimming)	S	S	S	S
Front map lights	-	S	S	S
Front ambient LED lighting	-	-	-	S
Second row courtesy light	S	S	S	S
Second row map/reading lights	-	-	-	S
Luggage compartment illumination	S	S	S	S
INSTRUMENTATION AND CONTROLS				
Cruise control	O <sup>5</sup> .	S	S	S
Leather wrapped steering wheel	O <sup>5</sup> .	S	S	S
Telescopic and tilt adjustable steering column	S	S	S	S
Leather wrapped gear knob/shifter	S	S	S	S
Leather wrapped handbrake cover	-	-	-	S
Digital clock	S	S	S	S
Keyless start system with 'Ford Power' starter button	-	-	-	S
Human Machine Interface (HMI) - with standard cluster display	S	S	S	-
Human Machine Interface (HMI) - with Ford Convers+ premium colour cluster display	-	-	-	S
<b>Instrument cluster:</b> speedometer, tachometer, odometer, tripmeter, fuel gauge and water temperature gauge	S	S	S	S
<b>Trip computer:</b> Includes average fuel consumption, average speed, outside air temperature, trip reset, distance to empty	S	S	S	S
<b>Warning indicators:</b> low fuel, oil pressure, driver and front passenger seatbelts, glow plug indicator (diesel only), ignition/alternator, brake system/handbrake on, airbags, frost warning, message indicator, audible warning for 'lights on', key in ignition and door ajar	S	S	S	S
COMFORT AND CONVENIENCE				
Air-conditioning	S	S	S	S
Dual zone climate control	-	S	S	S
Rear air vents	-	-	-	S
Front windscreen wipers with variable intermittent and drip wipe features	S	-	-	-
Automatic front windscreen wipers with rain sensor and variable sensitivity adjustment	-	S	S	S
Rear windscreen wiper with fixed intermittent and auto wipe features <sup>8</sup> .	-	S	S	S
Power front windows with driver one-touch up & down, 'bounce back' sensor and global open/close	S	S	S	S
Manual rear windows	S	-	-	-
Power rear windows with 'bounce back' sensor and global open/close	O <sup>5</sup> .	S	S	S
Power sunroof with tilt/slide functionality	-	O	O	O
Driver and front passenger sunvisors with vanity mirror	S	-	-	-
Driver and front passenger sunvisors with illuminated vanity mirror	-	S	S	S
Brushed stainless scuff plates (front doors)	-	-	-	S
Roof mounted sunglasses stowage <sup>9</sup> .	S	S	S	S
Centre console with storage box, hinged armrest and two front cupholders	S	S	S	S
Ashtray front and rear	S	S	S	S
Accessory socket - 12V power point	S	S	S	S
Driver's footrest	S	S	S	S
Keyless entry with two remote control flip keys	S	S	S	-
Two remote control keys for keyless start	-	-	-	S

S - Standard O - Options that can be ordered before a vehicle is manufactured

<sup>8</sup>. Rear windscreen wiper not available on sedan. <sup>9</sup>. Not available with optional sunroof.

SEATING	LX	Zetec	TDCi	XR5 Turbo
Driver and front passenger sports seats	-	-	-	S
Cloth seat trim	S	S	S	-
Leather seat trim with variable heated front seats	-	O	O	-
Alcantara/leather seat trim with variable heated front seats	-	-	-	S
Driver's seat manual height adjust (2-way)	S	-	-	-
Driver's seat power height adjust (2-way)	-	S	S	S
2-way active front head restraints	S	S	S	-
4-way active front head restraints	-	-	-	S
Driver side manual lumbar adjust	S	S	S	S
Passenger side manual lumbar adjust	-	S	S	S
Driver seat back map pocket	-	S	S	S
Passenger seat back map pocket	S	S	S	S
60/40 split rear bench seat and seat back	S	S	S	S
Three height adjustable rear head restraints	S	S	S	S
Folding centre rear seat arm rest	S	S	S	S
AUDIO				
Single slot CD with AM/FM radio and 8 speakers	S	-	-	-
Sony premium sound system - 6-disc in-dash CD and AM/FM radio with MP3 capability and 8 speakers	-	S	S	S
Portable music player connection socket <sup>10</sup> .	S	S	S	S
Remote audio controls mounted on steering column	S	S	S	S
Advanced Bluetooth® Hands-free and Voice Control System <sup>11</sup> .	O	O	O	O
SAFETY AND SECURITY				
Intelligent Protection System including:				
Driver and front passenger airbags	S	S	S	S
Side front airbags	S	S	S	S
Side curtain airbags	S	S	S	S
Driver's knee bolster airbag	S	S	S	S
Collapsible steering column	S	S	S	S
Pedal intrusion prevention system	S	S	S	S
Pyrotechnic belt buckle pretensioners (front only)	S	S	S	S
Seat belt reminder system - driver and front passenger seats	S	S	S	S
Active neck injury protection system on front seats	S	S	S	S
Dynamic Stability Control <sup>12</sup> with Emergency Brake Assist and Traction Control	S	S	S	S
Anti-lock Braking System (ABS) with Electronic Brakeforce Distribution (EBD)	S	S	S	S
Side impact door beams - front and rear	S	S	S	S
Height adjustable seatbelt mounts (front only)	S	S	S	S
Door locks - anti-burst, high security, shielded with child-lock on rear doors	S	S	S	S
Immobiliser - passive anti-theft system	S	S	S	S
Remote central double locking with global open and global close	S	S	S	S
Perimeter alarm	-	S	S	S
Front and rear parking sensors	-	S	S	S
OPTIONAL PACK				
Cruise Pack:				
16" x 6.5" Y-spoke alloy wheels with 215/55 R16 tyres (set of 4)	O	-	-	-
Rear power windows				
Cruise control with leather wrapped steering wheel				

<sup>10</sup>. Connection cable sold separately. <sup>11</sup>. The Bluetooth® word mark and logos are registered trademarks owned by Bluetooth SIG, Inc. and any use of such marks by Ford Motor Company is under licence. <sup>12</sup>. Dynamic Stability Control is also known as Electronic Stability Control.

## Accessories availability by model.

For a full range of accessories visit [ford.com.au](http://ford.com.au)



Garmin Nuvi 760 portable satellite navigation system<sup>1</sup>.



Waterproof boot liner helps keep boot area clean and dry.



Carry bars and bike carrier (sold separately) for easy transport of bikes of all sizes.

	LX	Zetec	TDCi	XR5 Turbo
<b>EXTERIOR PROTECTION</b>				
Bonnet protector	A	A	A	A
Licence plate covers	A	A	A	A
Mudspats <sup>2</sup>	A	A	A	-
Weathershields - slimline <sup>2</sup>	A	A	A	A
<b>INTERIOR COMFORT AND STORAGE</b>				
Boot scuff guard	A	A	A	A
Waterproof boot liner	A	A	A	A
Carpet mats <sup>3</sup>	A	A	A	-
Premium carpet mats <sup>2</sup>	A	A	A	S
Rubber floor mats <sup>2</sup>	A	A	A	-
<b>IN CAR ELECTRICAL AND ENTERTAINMENT</b>				
Garmin Nuvi 260 portable satellite navigation system <sup>1</sup>	A	A	A	A
Garmin Nuvi 260W portable satellite navigation system <sup>1</sup>	A	A	A	A
Garmin Nuvi 310 portable satellite navigation system <sup>1</sup>	A	A	A	A
Garmin Nuvi 760 portable satellite navigation system <sup>1</sup>	A	A	A	A
CD wallet	A	A	A	A
<b>SAFETY AND SECURITY</b>				
Fire extinguisher 1kg	A	A	A	A
First aid kit	A	A	A	A
Safety triangle	A	A	A	A
<b>TOWING AND CARRYING</b>				
Carry bars	A	A	A	A
Bike carrier <sup>4</sup>	A	A	A	A
Rhino-Rack bike carrier <sup>1,4</sup>	A	A	A	A
Rhino-Rack ski/snowboard carrier <sup>1,4</sup>	A	A	A	A
Towpack - standard 1200kg rated <sup>5</sup>	A	A	A	A
Towpack - heavy duty 1600kg (incl. load levelling kit) <sup>5</sup>	-	-	A	A

S - Standard. A - Accessory that can be added at any time.

1. This accessory is a Supplier Branded Accessory and is not manufactured or warranted by Ford. The warranty is provided by the manufacturer of the accessory. Contact your authorised Ford Dealer for details of the manufacturer's warranty applicable to this accessory.  
 2. Front and rear sets sold separately. 3. Set of 4. 4. Attaches to Genuine Ford carry bars (sold separately). 5. Subject to State and Territory regulations.

## Making your ownership experience even more rewarding.

A great car is just the beginning. We support you with a wide range of services that aim to make you one of the most satisfied vehicle owners in Australia.

### Insurance

Ford offers a full suite of insurance products; designed to make it easier to keep your Mondeo on the road. Along with traditional motor vehicle insurance, we also offer various loan and equity protection products to both private and business buyers.

### Considering Finance?

Ford Credit provides a range of finance driven solutions for private, business and fleet customers; making it easier, and more affordable than you may expect, to drive a new Mondeo. Having financed more than one million vehicles in Australia since 1971, Ford Credit has the products and experience to meet your needs. For more information, ask at your authorised Ford Dealer or visit us at [www.fordcredit.com.au](http://www.fordcredit.com.au)

### 3 year/100,000km new car warranty.\*

For three years or 100,000km, whichever comes first, your Ford is covered against any defects in factory materials or workmanship. This also applies to Genuine Ford Accessories you may have had fitted before you took delivery.

### 5 year warranty against perforation corrosion.\*

It's reassuring to know that the original body of your gleaming new Ford is guaranteed against perforation corrosion for the first five years of its life. If perforation corrosion occurs, we'll fix it for free.

### Want to contact us?

For answers to your questions, or help with any concern, contact our Customer Relationship Centre on 13 FORD (13 3673).

### Running a fleet?

Our Ford Business Centre is available to assist fleet customers with information on Ford products and services. Call 1300 13 13 30.

### Visit us on the web.

If you want more information on Ford or our entire product range, visit us on the Internet at [ford.com.au](http://ford.com.au)



\*Conditions and exclusions apply. See your authorised Ford Dealer for details.

This brochure is designed to provide you with a general introduction to the Ford Products (including available optional equipment) referred to, and should be read in conjunction with the latest specification sheet. Because of changes in conditions and circumstances Ford\* reserves the right, subject to all applicable laws, at any time, at its discretion, and without notice, to discontinue or change the features, designs, materials, colours and other specifications and the prices of their products, and to either permanently or temporarily withdraw any such products from the market without incurring any liability to any prospective purchaser or purchasers. The latest specification sheet should be referred to for information on the availability, ordering and use of optional equipment. Always consult an authorised Ford Dealer for the latest information with respect to features, specifications, prices, optional equipment and availability before deciding to place an order. \*FORD MOTOR COMPANY OF AUSTRALIA LIMITED. (A.B.N. 30 004 116 223) Registered Office: 1735 Sydney Road, Campbellfield, Victoria 3061, Australia. Printed August 2008. FML6162eb

