

RANGER



Go Further



TOUGH DONE SMARTER

Bolder. Smarter. As tough as ever. Introducing the Ford Ranger. With a striking front-end design, intelligently refined interior, and cutting-edge technology, Ranger is the most advanced truck ever seen in Australia.



BUILT TO TAKE ON YOUR WORLD

Ranger 4x4's 800mm water wading¹ capability and unsurpassed 3,500kg² maximum towing capacity make light work of tough challenges. Powered by next-generation turbo-diesel engines integrated with advanced driver assist technologies, you can go virtually anywhere and feel in total control.

1. 800mm available on 4x2 Hi-Rider and 4x4 models only. Achieved when maintaining a steady speed of 7 km/h. 2. Maximum braked towing capacity on 4x2 Hi-Rider and 4x4 models when Ford Genuine Tow Pack fitted. Subject to regulatory requirements and vehicle weight restrictions (which may require occupants and / or luggage to be restricted). Please consult your Ford Dealer or the Owner's Manual (available at ford.com.au) for guidance.

THE SCIENCE OF TRUCK

Introducing a suite of state-of-the-art technologies available¹ on the Ranger XLT and Wildtrak. Think Strategically placed cameras. Think Ultrasonic sensors. Think Sophisticated radar.

Set your speed, keep your distance. Unlike conventional cruise control, Adaptive Cruise Control¹ can adjust to the flow of traffic. Simply set your cruising speed, and the system slows down when it senses traffic, then returns to your pre-set speed when traffic clears.

Scans the road ahead, looking for trouble. If the Forward Collision Warning¹ System senses a possible collision, you're alerted by a heads-up display on the windscreen. The brakes are then pre-loaded for enhanced stopping power.

Stick to the speed limit with the Adjustable Speed Limiter². Set a maximum speed and the system helps you to not exceed it. Need to overtake a slow vehicle? Manually override the system by stepping on the accelerator pedal.

Never lose focus. If sensors detect that you move out of your lane, Lane Keeping Aid³ applies steering torque to help get you back on track. If you don't react, the system alerts you by vibrating the steering wheel.



ADAPTIVE CRUISE CONTROL



FORWARD COLLISION WARNING



LANE KEEPING AID



1. Features included with optional Technology Pack available on XLT and standard on Wildtrak models. Driver-assistance features are supplemental and do not replace the driver's judgement. Function may not operate in some driving and road conditions or adverse weather. 2. Standard on XL, XLS, XLT and Wildtrak models. Driver-assistance features are supplemental and do not replace the driver's judgement. Function may not operate in some driving and road conditions or adverse weather. 3. Feature included with optional pack available on XLT and standard on Wildtrak models. Operates at speeds over 64km/h on multi-lane roads with clearly visible lane markings. Driver-assistance features are supplemental and do not replace the driver's judgement. Function may not operate in some driving and road conditions or adverse weather.



Ranger 4x4 XLT Double Cab with Technology Pack shown.

BIG POWER SMALL APPETITE

The heart of Ranger's fuel-efficient 2.2L TDCi diesel engine is as impressive as ever. The powerful 3.2L TDCi engine is even more economical. So you can spend more time on the move for less.

3.2L TDCi

Ranger's 5-cylinder 3.2L TDCi diesel engine delivers the power and torque you'd expect from a Ranger, but with exceptional fuel efficiency.

- 950-1,355kg – Payload capacity¹
- 3,500kg – Max. towing capability²
- 147kW – Max. Power
- 470Nm – Max. Torque

2.2L TDCi

Ranger's 4-cylinder 2.2L TDCi diesel engine combines outstanding fuel economy with impressive power and torque to get the job done.

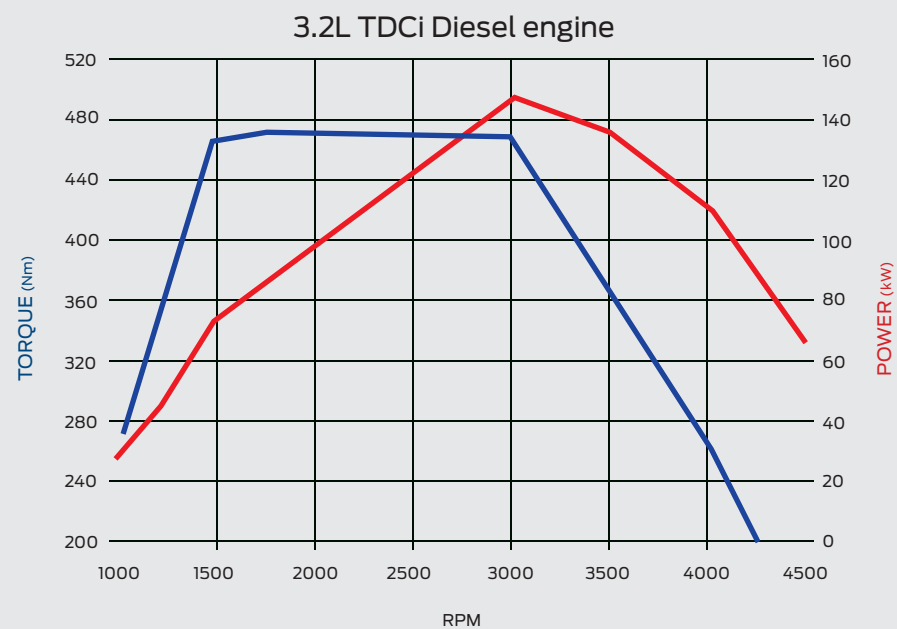
- 1,115-1,500kg – Payload capacity¹
- 3,500kg – Max. towing capability²
- 118kW – Max. Power
- 385Nm – Max. Torque

Manual and Auto Transmission

The highly advanced 6-speed automatic transmission delivers effortlessly smooth performance. The ratios have been selected to maximise real world driveability and smoothness. Driver Recognition software enables the transmission to adjust shift patterns to fit driver preferences – such as conserving fuel or switching to Sports Mode to instantly access a more sporty and decisive shift pattern. The Sports Mode also allows the driver to take full control and manually shift gears at any time, which is great for overtaking or for towing.

The Ranger's 6-speed manual transmission gives you ultimate control. A Shift Indicator Lamp signals the driver when to shift to optimize fuel economy, the cable shifter provides improved driveline isolation and shift feel, and the single-mass flywheel reduces gear rattle. These features combine to provide an engaging driving experience.

The manual transmission also now enables Auto Stop/Start³. This innovative technology automatically stops and smoothly restarts the engine when the vehicle comes to a stop to improve fuel economy and reduce emissions.⁴



3.2L TDCi Diesel engine.

1. Subject to State and Territory regulations. Payload is defined as the Gross Vehicle Mass minus Kerb Mass. Payload is the maximum combined value of occupants, cargo, added options, added structures and Tow Ball download (when towing). GVM must not be exceeded. 2. Maximum braked towing capacity on 4x2 Hi-Rider and 4x4 models when Ford Genuine Tow Pack fitted. Subject to regulatory requirements and vehicle weight restrictions (which may require occupants and / or luggage to be restricted). Please consult your Ford Dealer or the Owner's Manual (available at ford.com.au) for guidance. 3. De-activation will not occur in all stopping situations. 4. Standard on manual transmission 2.2L and 3.2L Hi-Rider and 4x4 models.

BRING IT ON

Take on whatever the world throws at you. From river crossings to challenging off-road terrain, be ready for anything.

Up to 800mm water wading¹ means a river can't come between you and the task at hand.

Mud, sand, and steep inclines. Conquer them all. eLocking Rear Differential² locks rear wheels together for maximum traction when driving on challenging surfaces or when it's difficult to keep both rear wheels on the ground at the same time.

4x4 shift on the fly lets you shift between 2WD and 4WD High mode with a turn of a dial.

Up to 237mm ground clearance³ means almost nothing can get between you and where you're going.



UP TO 800mm
WATER WADING



SHIFT ON THE
FLY 4X4



eLOCK REAR
DIFFERENTIAL





Ranger 4x4 XLT Double Cab Pick-up with Technology Pack and accessory Tow Ball shown.

MAKE LIGHT WORK OF BIG CHALLENGES

The Ford Ranger's ultra-strength chassis, high-torque engines, and superior suspension help you tow, haul and move with ease.

Tested in the real world. The Ranger has survived harsh torture tests in some of the toughest climates and terrains.

Unique chassis designed by Ford engineers. The Ranger combines an ultra-high-strength steel chassis and a superior suspension design to deliver a stronger, smoother ride.

Tow more. Sweat less. Ranger's up to 3,500kg¹ towing capacity with Trailer Sway Control lets you handle big loads with greater confidence.

Payload capacity up to 1,500kg.² The Ranger is strong enough to haul even the most backbreaking loads.



Ranger 4x4 Wildtrak overseas model shown.



Ranger 4x4 XLT Double Cab Pick-up with accessory Tow Ball shown.

1. Maximum braked towing capacity on 4x2 Hi-Rider and 4x4 models when Ford Genuine Tow Pack fitted. Subject to regulatory requirements and vehicle weight restrictions (which may require occupants and / or luggage to be restricted). Please consult your Ford Dealer or the Owner's Manual (available at ford.com.au) for guidance. 2. 1,500kg payload available on 4x2 XL Single Cab Chassis Hi-Rider 2.2L Diesel manual only. Please refer to specification table for all other models payload details.



Ranger 4x4 XLT Double Cab interior shown with optional Technology Pack and auto transmission. Overseas model shown.



Ranger 4x4 Wildtrak Double Cab interior shown.

COMFORT OUT OF YOUR COMFORT ZONE

The Ranger's interior is durable, spacious, and has been crafted for a quieter ride. Giving you a Ranger that's more comfortable, more functional, and helps keep you in command.

A **dual TFT instrument cluster** in XLT and Wildtrak models displays vehicle information – from performance to navigation to entertainment, it's all there on a low-glare, high-quality flat screen.

Stretch Out. The legroom in our Double Cabs makes life more comfortable for your passengers.

Choose XLT Leather Accented Seats¹ that look as luxurious as they feel, so you can sit back and relax even in the toughest terrain.

A **laptop-sized glovebox** helps you store the essentials for staying connected on the go.

Hello. Goodbye. Enjoy the ride. The Ranger Wildtrak ambient lighting system² illuminates to welcome you when you enter the vehicle, and helps you see more when you exit. You can even choose between seven ambient lighting colours that automatically switch on at night.

1. Optional XLT Leather Accented Seats available on Ranger XLT Double Cab models at additional cost. 2. Standard on Wildtrak model only.

STAY CONNECTED ANYWHERE AND EVERYWHERE

Work smarter. Play harder. Our next generation SYNC® 3¹ is a fully integrated, voice-activated system that lets you continue to work, without taking your hands off the wheel or your eyes off the road. Just by saying a few simple words.

Enjoy seamless integration with your smartphone. Easily switch between SYNC® 3 and Apple CarPlay™² or Android Auto™³, so you can choose how you stay connected.⁴

Let your fingers do the talking. View vehicle information on the 8-inch colour capacitive touchscreen¹:

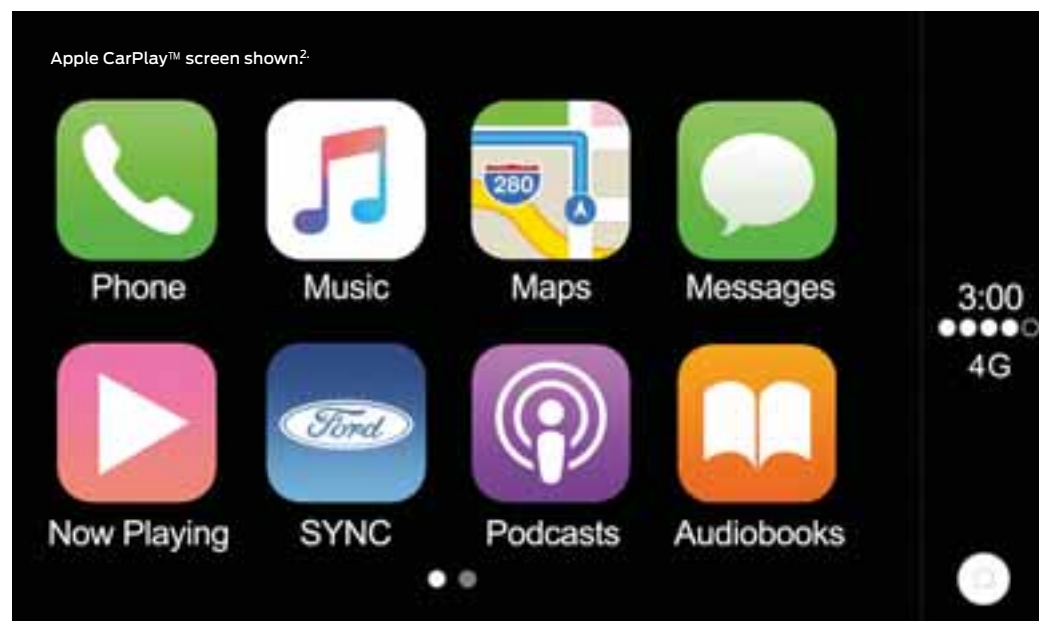
Keep on track with Satellite Navigation¹: Use voice-activation to listen to real-time traffic condition updates, voice-guided directions, and view detailed maps on the 8-inch touchscreen.

Connect more devices in more ways with the SYNC® 3 Media Hub⁵. With Bluetooth Technology and USB ports, you can easily access your music and favourite apps.

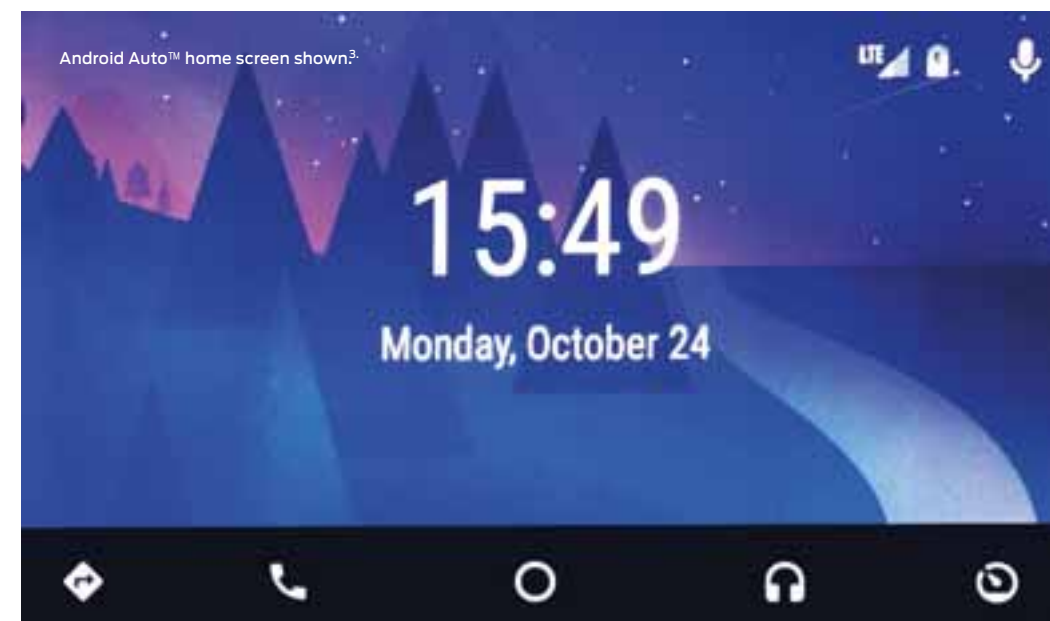
Emergency Assistance⁶ can call emergency services and share your exact GPS location in the unlikely event of an accident that shuts off the fuel pump or activates an airbag.



Ranger XLT interior shown with SYNC® 3 SatNav.¹



Apple CarPlay™ screen shown.²



Android Auto™ home screen shown.³

1. SYNC® 3 with 8 inch touchscreen and Satellite Navigation standard on XLT and Wildtrak, SYNC® standard on all other models. For SYNC® compatibility visit www.ford.com.au/sync 2. Apple CarPlay™ requires phone with compatible version of Apple iOS, active data service, and connection cable (sold separately). SYNC® does not control Apple CarPlay™ while in use. Apple is solely responsible for their functionality. Message and data rates may apply. Apple CarPlay™, Siri Eyes Free, iPod and iPhone are trademarks of Apple Inc. registered in the US and other countries. 3. Android Auto™ requires phone with compatible version of Android Auto™ active data service and connection cable (sold separately). SYNC® does not control Android Auto™ while in use. Android Auto™ is solely responsible for their functionality. Message and data rates may apply. Android Auto™ and Google Maps are trademarks of Google Inc. 4. Local laws may prohibit the use of some features. Check your local road rules before using. 5. Driving while distracted can result in loss of vehicle control. Only use SYNC® even with voice commands, when it is safe to do so. Some features may be locked out while the vehicle is in gear. Not all features are compatible with all phones. 6. To use Emergency Assistance, your phone must be paired and in mobile reception range.



Ranger Wildtrak 4x4 overseas model shown.

YOUR OFF-ROAD OFFICE

When your truck doubles as your office, a functional design makes all the difference.

Park with confidence. Whether reversing into a tight parking spot or hitching up a trailer, the Rear View Camera¹ gives you the ability to position yourself exactly where you want it. Combined with Rear Parking Sensors,¹ which give an audible and visible warning to alert you to nearby objects, you can park almost anywhere.

Do more. Wherever you are. A 230V power inverter² powers your electrical equipment, wherever the job finds you.

See more at night in your rear tray when loading and unloading, with a convenient load box illumination light³.

Auto headlamps come on automatically when there's not enough ambient light.



1. Rear View Camera and Rear Parking Sensors standard on all Pick-Up models excluding XL Plus. 2. Super and Double Cab models only. Not available in XL Plus models. 3. Standard on Pick-Up models excluding XL Plus.



Ranger 4x4 Wildtrak overseas model shown.



BUILT TOUGH BUILT SMART

Ranger is packed full of safety and driver assist features² that keep you in control.

Engineered for Safety. Tough needs to be backed up by common sense safety, which the Ranger is engineered to deliver across the range. With six airbags – including seat side and curtain airbags – along with a reinforced safety cell, the Ranger helps make every journey a safer one. It's no surprise that it has earned a 5 star ANCAP rating.

Control where you need it most. You can drive with greater confidence and peace of mind with Ranger's Dynamic Stability Program² which includes the following intelligent driver assist features:

Roll-Over Mitigation² reduces the risk of getting into a roll-over situation.

Hill Launch Assist² helps you pull away on steep inclines.

Hill Descent Control^{1,2} helps you stay in control on steep downhill grades.

Trailer Sway Control² helps provide stability and greater control when towing.

Traction Control² maximises traction and helps you avoid wheel spin.

Adaptive Load Control² is designed to calculate the Ranger's weight and adjusts the Dynamic Stability Control to optimise safety and driving performance.

Emergency Brake Assist² applies maximum brake pressure in an emergency stopping situation.

1. Standard on 4x4 models only. 2. Driver-assist features are supplemental and do not replace the driver's attention, judgment and need to control the vehicle. May not operate in some driving and road conditions (including at certain speeds) or adverse weather.



Single Cab

This is the all-round workhorse you can always rely on. You have all the technology and comfort you want up-front and an exceptional load capability in the back.

XL

Ford SYNC® connectivity system with Emergency Assistance, Bluetooth®, hands free phone and voice control

USB/iPod integration

4.2" colour multi-function display

Cruise control with steering wheel mounted buttons

Adjustable Speed Limiter

Electronic Power Assisted Steering (EPAS)

Power windows and mirrors

eLocking Rear Differential (4x2 Hi-Rider and 4x4 models only)

Auto Stop/Start (4x2 Hi-Rider and 4x4 manual models only)

Dynamic Stability Control (DSC)

Emergency Brake Assist

Auto on/off headlamps

Single zone manual air conditioning

Inner and Outer tie downs on Pick-up models

Driver and front passenger airbags

Front Seat side and curtain airbags

16" Steel Wheels

Load Box Illumination on Pick-up models

Rear View Camera (Pick-up models only)

Rear Parking Sensors (Pick-up models only)

XL Plus

Ford SYNC® connectivity system with Emergency Assistance, Bluetooth®, hands free phone and voice control

USB/iPod integration

3.5" ice blue multi-function display

Cruise control with steering wheel mounted buttons

eLocking Rear Differential

Dynamic Stability Control (DSC)

Emergency Brake Assist

Auto on/off headlamps

Single zone manual air conditioning

Daytime running lights

Heavy Duty canvas seat covers

Towbar

17" Steel Wheels with all-terrain tyres

Expanded wiring harness with 4-switch auxiliary bezel

Second battery





Super Cab

The Super Cab is super-roomy, with two conventional front doors and two rear panel doors that open to the rear, and without a fixed B-pillar, you have easy access to the rear of the cab and the space behind the front seats.

XL

Ford SYNC® connectivity system with Emergency Assistance, Bluetooth®, hands free phone and voice control

USB/iPod integration

4.2" colour multi-function display

Cruise control with steering wheel mounted buttons

Adjustable Speed Limiter

Electronic Power Assisted Steering (EPAS)

Power windows and mirrors

eLocking Rear Differential (4x2 Hi-Rider and 4x4 models only)

Auto Stop/Start(4x2 Hi-Rider and 4x4 manual models only)

Dynamic Stability Control (DSC)

Emergency Brake Assist

Auto on/off headlamps

Single zone manual air conditioning

230V power inverter

12V auxiliary power socket x3

Load Box Illumination on Pick-up models

Inner and Outer tie downs on Pick-up models

Driver and front passenger airbags

Side Front seat and front side curtain airbags

16" Steel Wheels

Rear View Camera (Pick-Up models only)

Rear Parking Sensors (Pick-Up models only)

XLT Includes XL features plus:

Ford SYNC® 3 with voice controlled SatNav

DAB Radio

8" colour touch screen

Rain sensing wipers

Projector Headlamps

Tyre Pressure Monitoring System

Dual Zone climate control

Bedliner with 12V socket

Load Box Illumination in Chrome Sports Bar

Cooled Centre Console

Towbar

17" Alloy Wheels

Privacy Glass

Heated exterior mirrors

Electrochromatic rear view mirror

Dual colour 4.2" instrumentation screens

Front Parking Sensors

Plastic Side Steps

Available in optional XLT Technology Pack:

Adaptive Cruise Control with Forward Collision Alert

Automatic High Beam Control

Driver Impairment Monitor

Lane Keeping Aid

Lane Departure Warning





Double Cab

With car-like comfort and a cabin large enough to comfortably seat up to 5 people, every Double Cab Ranger model takes you from weekday to weekend with ease.

XL

Ford SYNC® connectivity system with Emergency Assistance, Bluetooth®, hands free phone and voice control

USB/iPod integration

4.2" colour multi-function display

Cruise control with steering wheel mounted buttons

Adjustable Speed Limiter

Electronic Power Assisted Steering (EPAS)

Power windows and mirrors

eLocking Rear Differential (4x2 Hi-Rider and 4x4 models only)

Auto Stop/Start(4x2 Hi-Rider and 4x4 manual models only)

Dynamic Stability Control (DSC)

Emergency Brake Assist

Auto on/off headlamps

Single zone manual air conditioning

230V power inverter and 12V auxiliary power socket

Load Box Illumination on Pick-up models

Inner and Outer tie downs on Pick-up models

Driver and front passenger airbags

Side Front seat and front side curtain airbags

16" Steel Wheels

Rear View Camera (Pick-Up models only)

Rear Parking Sensors (Pick-Up models only)

XL Plus

SYNC® connectivity system with Emergency Assistance, Bluetooth®, hands free phone and voice control

USB/iPod integration

3.5" ice blue multi-function display

Cruise control with steering wheel mounted buttons

eLocking Rear Differential

Dynamic Stability Control (DSC)

Emergency Brake Assist

Single zone manual air conditioning

Inner and Outer tie downs on Pick-up models

Daytime running lights

Heavy Duty canvas seat covers

Plastic Side Steps

Towbar

17" Steel Wheels with all-terrain tyres

Expanded wiring harness with 4-switch auxiliary bezel

Second battery

XLS Includes XL features plus:

Alloy wheels

Floor coverings – carpet

Front Floor mat – driver's side only

Fog Lights

London Grey Colour Accented Grille and Exterior Mirrors

XLT Includes XL features, plus:

Ford SYNC® 3 with voice controlled SatNav

DAB Radio

8" colour touch screen

Rain sensing wipers

Projector Headlamps

Tyre Pressure Monitoring System

Dual Zone climate control

Bedliner with 12V power socket

Load Box Illumination in Chrome Sports Bar

Cooled Centre Console

Plastic Side Steps

Towbar

17" Alloy Wheels

Electrochromatic rear view mirror

Heated exterior mirrors

Illuminated vanity mirrors

Dual colour 4.2" instrumentation screens

Privacy Glass

Front Parking Sensors

Available with optional XLT Leather Accented Seats

Available in optional XLT Technology Pack:

Adaptive Cruise Control with Forward Collision Alert

Automatic High Beam Control

Driver Impairment Monitor

Lane Keeping Aid

Lane Departure Warning

Wildtrak Includes XLT features plus:

Heated Front seats

Roof Rails

Roller Shutter

Puddle Lamps

Ambient Lighting

Adaptive Cruise Control with Forward Collision Alert

Lane Keeping Aid

Lane Departure Warning

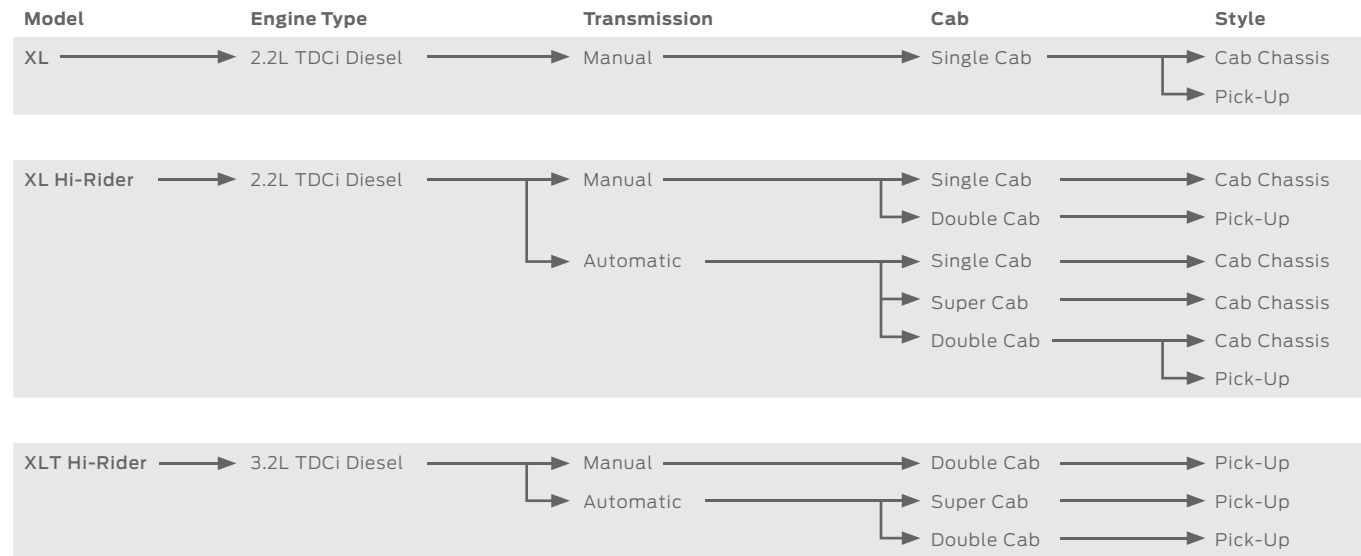
Driver Impairment Monitor

Automatic High Beam Control

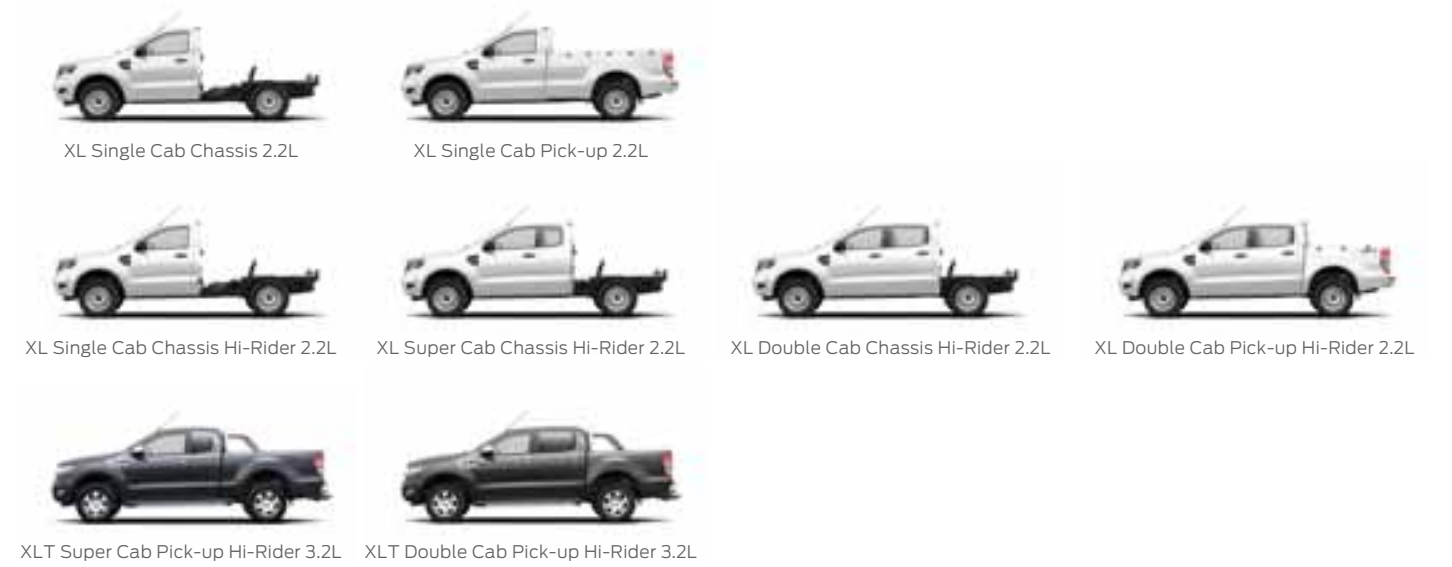
18" Alloy Wheels

Wildtrak Leather Accented Seats

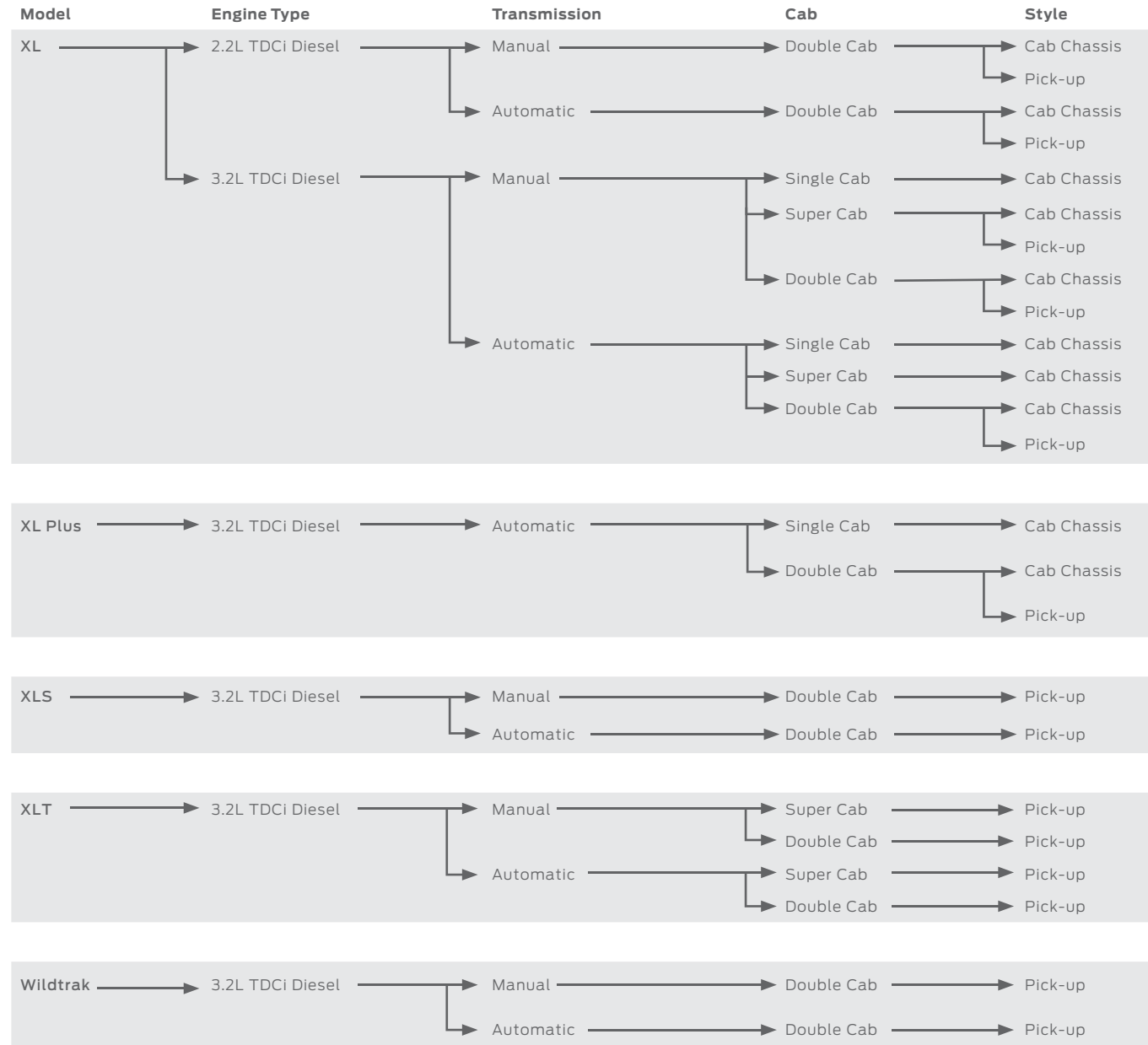
4X2 Models



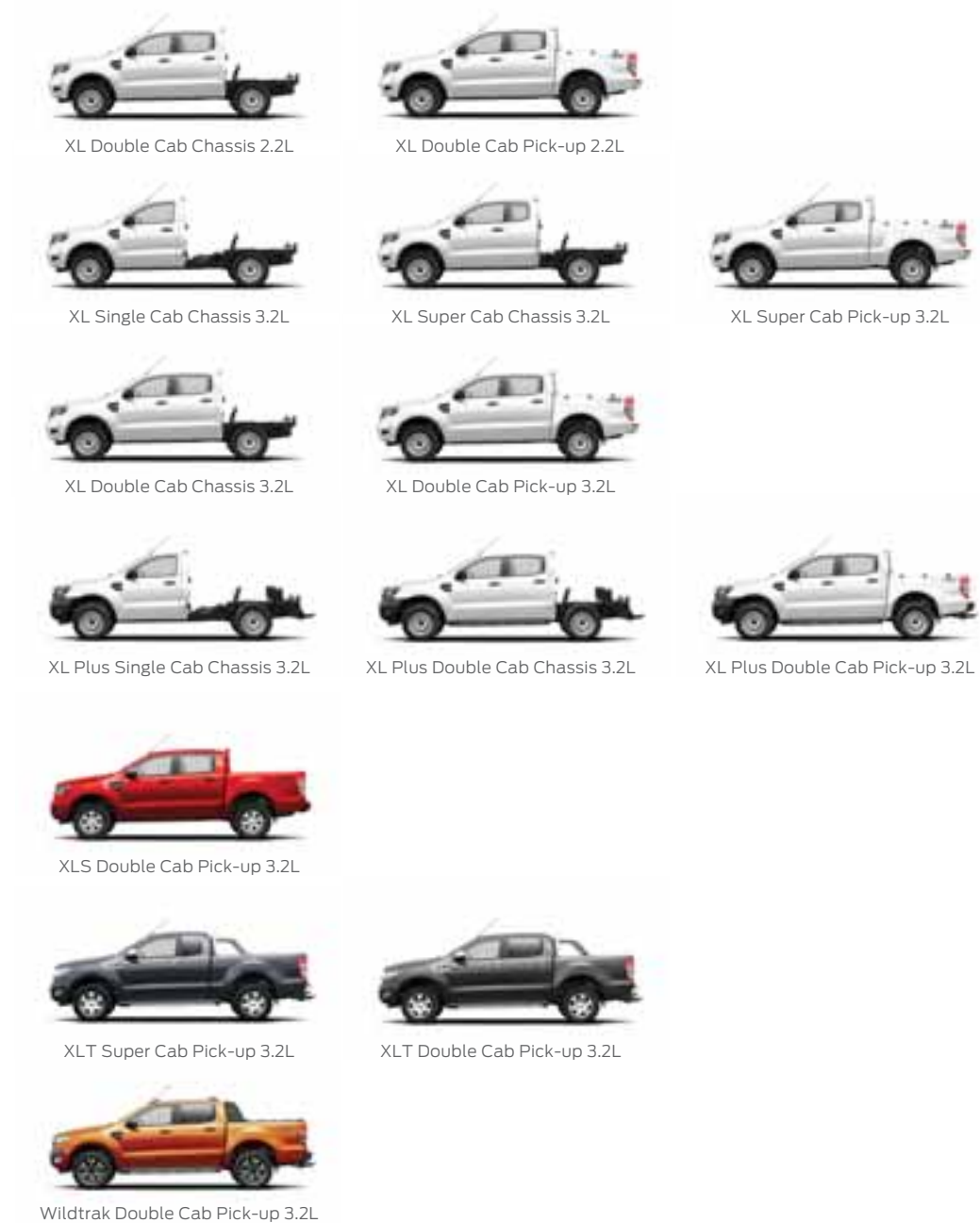
4X2 Models



4X4 Models



4X4 Models



Ranger Colours – Single and Super Cab Models (Including All XL Plus)

Make the Ranger your own. With a great range of stylish colours and trims, you can customise your Ranger so it's just right for you.



XL in Shadow Black**



XLT in Aurora Blue*



XL in Aluminium Silver*



XLT in Meteor Grey*



XL in Cool White



XLT in True Red

Single and Super Cab Model & Colour Availability

	XL	XL Plus	XLT
Shadow Black**	✓	✓	✓
Aurora Blue*	✓	✓	✓
Aluminium Silver*	✓	✓	✓
Meteor Grey*	✓	✓	✓
Cool White	✓	✓	✓
True Red	✓	✓	✓

Ranger Colours – Double Cab Models (Excluding XL Plus)



XL in Shadow Black*



XLT in Winning Blue**



XLT in Ingot Silver*



XLT in Magnetic*



XLT in Frozen White



XLS in Race Red^



Wildtrak in Pride Orange*#

Double Cab Model & Colour Availability

	XL	XLS	XLT	Wildtrak
Shadow Black*	✓	✓	✓	✓
Winning Blue*	✓	✓	✓	–
Ingot Silver*	✓	✓	✓	✓
Magnetic*	✓	✓	✓	✓
Frozen White	✓	✓	✓	✓
Race Red	✓	✓	✓	–
Pride Orange*	–	–	–	✓

*Prestige paint is an option that incurs an additional charge. **Shadow Black available on Single Cab and Super Cab models (including all XL Plus models) produced from October 2017 production onwards.

*Prestige paint is an option that incurs an additional charge. All Double Cab model colours shown above are available only on Double Cab models (excluding XL Plus). #Pride Orange exclusive to Wildtrak. ^Colour not available on Wildtrak.

Wheels



XL wheel

4x2 XL
Wheel: 16" x 6.5" steel
Tyre: P215/70 R16
Spare Wheel: 16" x 6.5" steel

4x2 XL Hi-Rider, 4x4 XL
Wheel: 16" x 7.0" steel
Tyre: P255/70 R16
Spare Wheel: 16" x 7" steel

4x4 XL Plus
Wheel: 17" x 7.5" steel
Tyre: P265/65 R17
Spare Wheel: 17" x 7.5" steel



XLS wheel

4x4 XLS
Wheel: 16" x 7.0" alloy
Tyre: P255/70 R16
Spare wheel: 16" x 7.0" steel



XLT wheel

4x2 XLT Hi-Rider
Wheel: 17" x 8.0" alloy
Tyre: P265/65 R17
Spare wheel: 17" x 7.5" steel

4x4 XLT
Wheel: 17" x 8.0" alloy
Tyre: P265/65 R17
Spare wheel: 17" x 7.5" steel

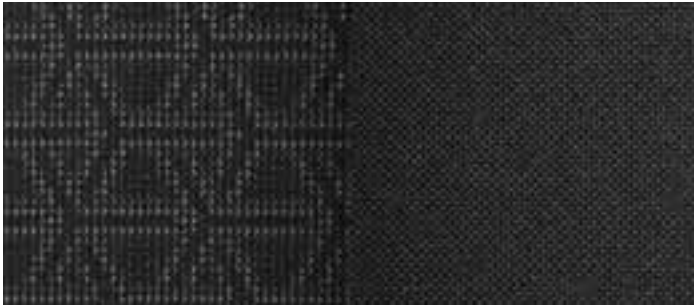


Wildtrak wheel

4x4 Wildtrak
Wheel: 18" x 8.0" alloy
Tyre: P265/60 R18
Spare wheel: 18" x 8.0" alloy

Note: All spare wheel tyres match vehicle model road tyres.

Interior Trims



XL/ XL Plus/ XLS

Circuit Fabric in Ebony trim seats, with Pulse Fabric in Ebony bolsters.



XLT

Penta Fabric in Ebony trim seats, with Catalyst Fabric in Ebony bolsters.



XLT Leather Accented Seats¹

Soho Grain Leather in Ebony trim seats with Soho Grain Leather in Ebony bolsters.



Wildtrak

Caliber Fabric in Trak Orange trim seats, with Journey Grain Leather in Ebony bolsters.

¹ Factory fitted option available at additional cost.

Mechanical Specifications

Engine	2.2L TDCi Diesel		3.2L TDCi Diesel	
Engine Type	4 Cylinder		5 Cylinder	
Engine Size (cm ³)	2198		3198	
Compression Ratio	15.7:1		15.7:1	
Maximum Power	118kW @ 3200rpm		147kW @ 3000rpm	
Maximum Torque	385Nm @ 1600-2500rpm		470Nm @ 1750-2500rpm	
No. of Valves	16		20	
Bore x Stroke (mm)	86 x 94.6mm		89.9 x 100.76mm	
Fuel Management System	Turbocharged Direct Common Rail Injection		Turbocharged Direct Common Rail Injection	
4x4 High/Low Range Transfer Case Ratios				
High Range	1.000:1		1.000:1	
Low Range	2.717:1		2.717:1	
Fuel Tank Capacity (L)				
Fuel Tank Capacity (L)	80		80	
2.2L TDCi Diesel				
3.2L TDCi Diesel				
Transmissions/Ratios	6-speed manual		6-speed auto	
1st	5.441	4.171	5.441	4.171
2nd	2.839	2.342	2.839	2.342
3rd	1.721	1.521	1.721	1.521
4th	1.223	1.143	1.223	1.143
5th	1.000	0.867	1.000	0.867
6th	0.794	0.691	0.794	0.691
Reverse	4.935	3.4	4.935	3.4
Final Drive Ratio – 4x2 Low Rider	3.15	-	-	-
Final Drive Ratio – 4x2 High Rider	3.55	3.73	3.55	3.73
Final Drive Ratio – 4x4	3.55	3.73	3.55	3.73
Fuel consumption¹				
4x2 Low Rider XL				
Single Cab – Fuel Economy (L/100km)	6.5	-	-	-
Single Cab – CO ₂ Emissions (g/km)	169	-	-	-
4x2 High Rider XL				
Single Cab – Fuel Economy (L/100km)	6.8	7.8	-	-
Single Cab – CO ₂ Emissions (g/km)	180	203	-	-
Super Cab – Fuel Economy (L/100km)	-	7.8	-	-
Super Cab – CO ₂ Emissions (g/km)	-	203	-	-
Double Cab – Fuel Economy (L/100km)	6.8	7.8	-	-
Double Cab – CO ₂ Emissions (g/km)	180	203	-	-
4x2 XLT				
Super Cab – Fuel Economy (L/100km)	-	-	-	8.2
Super Cab – CO ₂ Emissions (g/km)	-	-	-	216
Double Cab – Fuel Economy (L/100km)	-	-	8.1	8.2
Double Cab – CO ₂ Emissions (g/km)	-	-	215	216
4x4 XL				
Single Cab – Fuel Economy (L/100km)	-	-	8.3	8.7
Single Cab – CO ₂ Emissions (g/km)	-	-	218	229
Super Cab – Fuel Economy (L/100km)	-	-	8.3	8.7
Super Cab – CO ₂ Emissions (g/km)	-	-	218	229
Double Cab – Fuel Economy (L/100km)	7.1	8.0	8.3	8.7
Double Cab – CO ₂ Emissions (g/km)	185	209	218	229
4x4 XL Plus				
Single Cab – Fuel Economy (L/100km)	-	-	-	10.0
Single Cab – CO ₂ Emissions (g/km)	-	-	-	265
Double Cab – Fuel Economy (L/100km)	-	-	-	10.0
Double Cab – CO ₂ Emissions (g/km)	-	-	-	265
4x4 XLS				
Double Cab – Fuel Economy (L/100km)	-	-	8.3	8.7
Double Cab – CO ₂ Emissions (g/km)	-	-	218	229
4x4 XLT				
Super Cab – Fuel Economy (L/100km)	-	-	8.3	8.7
Super Cab – CO ₂ Emissions (g/km)	-	-	218	229
Double Cab – Fuel Economy (L/100km)	-	-	8.3	8.7
Double Cab – CO ₂ Emissions (g/km)	-	-	218	229
4x4 Wildtrak				
Double Cab – Fuel Economy (L/100km)	-	-	8.4	8.9
Double Cab – CO ₂ Emissions (g/km)	-	-	221	234
Maximum Braked Towing Capacity (kg)				
4x2 Low Rider ²	2500	-	-	-
4x2 High Rider ²	3500	3500	3500	3500
4x4 ²	3500	3500	3500	3500
Maximum Gross Combination Mass (kg)				
4x2 Low Rider	5425	-	-	-
4x2 High Rider	6000	6000	6000	6000
4x4	6000	6000	6000	6000

S – Standard O – Factory Option that can be ordered before a vehicle is manufactured A – Accessory that can be added at any time P – Part of a Pack

¹ Fuel consumption and emissions as per ADR 81/02 (combined cycle) and to be used for vehicle comparison purposes only. It is unlikely that these fuel consumption and emissions figures will be achieved in real world driving conditions. Actual fuel consumption and emissions will depend on many factors including the driver's habits, prevailing conditions and the vehicle's equipment, condition and use. ² Maximum braked towing capacity when Ford Genuine Tow Pack fitted. Subject to regulatory requirements and vehicle weight restrictions (which may require occupants and / or luggage to be restricted). Please consult your Ford Dealer or the Owner's Manual (available at ford.com.au) for guidance.

4x2 Specifications and Options

Model	XL Single C/C 2.2 D	XL Single C/CHR 2.2 D	XL Single P/U 2.2 D	XL Super C/CHR 2.2 D	XL Super P/U HR 3.2 D	XL Double C/CHR 2.2 D	XL Double P/U HR 2.2 D ¹	XL Double P/U HR 3.2 D
Safety, Security and Driver Assistance								
3 Point Lap Sash Seat Belt - All Positions	S	S	S	S	S	S	S	S
Adaptive Cruise Control with Forward Collision Alert ²	-	-	-	-	P	-	-	P
Adjustable Speed Limiter	S	S	S	S	S	S	S	S
Airbags - Driver and front passenger	S	S	S	S	S	S	S	S
Airbags - Front seat side	S	S	S	S	S	S	S	S
Airbags - Side curtain	S	S	S	S	S	S	S	S
Alarm with perimeter, interior motion and vehicle inclination sensors	S	S	S	S	S	S	S	S
Beltminder™ - Driver and front passenger	S	S	S	S	S	S	S	S
Cruise Control with steering wheel mounted buttons	S	S	S	S	S	S	S	S
Driver Impairment Monitor ²	-	-	-	-	P	-	-	P
Dynamic Stability Control (DSC) incorporating ABS ³	S	S	S	S	S	S	S	S
Emergency Assistance ⁴	S	S	S	S	S	S	S	S
Emergency Brake Assist ³	S	S	S	S	S	S	S	S
Emergency Brake Light	S	S	S	S	S	S	S	S
Hill Descent Control ³	-	-	-	-	-	-	-	-
Hill Launch Assist ³	S	S	S	S	S	S	S	S
Lane Departure Warning with Lane Keeping Aid ²	-	-	-	-	P	-	-	P
Load Adaptive Control ³	S	S	S	S	S	S	S	S
eLocking Rear Differential	-	S	-	S	S	S	S	S
MyKey®	-	-	-	-	S	-	-	S
Park Sensors - Front	-	-	-	-	S	-	-	S
Park Sensors - Rear	-	-	S	-	S	-	S	S
Rear View Camera	-	-	S	-	S	-	S	S
Remote Keyless Entry - 1 Fob provided	S	S	S	S	-	S	S	-
Remote Keyless Entry - 2 Fobs provided	-	-	-	-	S	-	-	S
Roll Over Mitigation ³	S	S	S	S	S	S	S	S
Traction Control System ³	S	S	S	S	S	S	S	S
Trailer Sway Control ³	S	S	S	S	S	S	S	S
Tyre Pressure Monitoring System	-	-	-	-	S	-	-	S
Volumetric Alarm with Battery Backup System	S	S	S	S	S	S	S	S
Comfort and Convenience								
2 Child Seat Upper Anchorage Points	-	-	-	S	S	S	S	S
2 Front Auxillary 12V Power Outlets	S	S	S	S	S	S	S	S
230V Inverter in Rear Console	-	-	-	S	S	S	S	S
Ambient Lighting	-	-	-	-	-	-	-	-
Auto On/Off Headlamps	S	S	S	S	S	S	S	S
Centre Console - Single Lid with 2 Cup Holders & Coin Storage	S	S	S	S	S	S	S	S
Climate Control Dual Zone Automatic	-	-	-	-	S	-	-	S
Climate Control Single Zone Manual	S	S	S	S	-	S	S	-
Cooled Console	-	-	-	-	S	-	-	S
Dual Colour 4.2" Instrumentation Screens	-	-	-	-	S	-	-	S
Electrochromatic Rear View Mirror	-	-	-	-	S	-	-	S
Expanded Wiring Harness with 4-switch Auxillary Bezel	-	-	-	-	-	-	-	-
Floor Coverings - Carpet	-	-	-	-	S	-	-	S
Floor Coverings - Vinyl	S	S	S	S	-	S	S	-
Floor Mats - Driver Only	-	-	-	-	S	-	-	S
Leather Wrapped Steering Wheel & Gear Knob	-	-	-	-	S	-	-	S
Manual Day/Night Inside Rear View Mirror	S	S	S	S	-	S	S	-
Power Front Windows (Auto Driver)	S	S	S	S	S	S	S	S
Power Rear Windows	-	-	-	-	-	S	S	S
Rain Sensing Windscreen Wipers	-	-	-	-	S	-	-	S
Rear Auxillary 12V Power Outlet	-	-	-	-	S	-	-	S
Rear Window Defrost	-	-	-	S	S	S	S	S
Audio And Communication								
4.2" Colour Multi-Function Display	S	S	S	S	-	S	S	-
8" Colour Touch Screen	-	-	-	-	S	-	-	S
4 Speakers (2 Tweeters, 2 Woofers)	S	S	S	-	-	-	-	-
6 Speakers (2 Tweeters, 4 Woofers)	-	-	-	S	S	S	S	S
AM/FM Stereo Radio	S	S	S	S	S	S	S	S
USB Integration ⁵	S	S	S	S	S	S	S	S
Bluetooth® with Voice Control ⁶	S	S	S	S	S	S	S	S
DAB Radio	-	-	-	-	S	-	-	S
Satellite Navigation with Traffic Management Channel ¹¹	-	-	-	-	S	-	-	S
Single CD Player (MP3 compatible)	S	S	S	S	S	S	S	S
SYNC® ⁷	S	S	S	S	-	S	S	-
SYNC® ³	-	-	-	-	S	-	-	S
Exterior								
16" Steel Wheels	S	S	S	S	-	S	S	-
17" Alloy Wheels	-	-	-	-	S	-	-	S
Body Mounted Indicators	S	S	S	S	-	S	S	-
Centre High Mounted Stop Light	S	-	S	-	-	S	S	-
Daytime Running Lamps	-	-	-	-	-	-	-	-
Door Handle - Black	S	S	S	S	-	S	S	-
Door Handle - Chrome	-	-	-	-	S	-	-	S

1. Fuel consumption and emissions as per ADR 81/02 (combined cycle) and to be used for vehicle comparison purposes only. It is unlikely that this fuel consumption and emissions figure will be achieved in real world driving conditions. Actual fuel consumption and emissions will depend on many factors including the driver's habits, prevailing conditions and the vehicle's equipment, condition and use. 2. Maximum braked towing capacity when Ford Genuine Tow Pack fitted. Subject to regulatory requirements and vehicle weight restrictions (which may require occupants and / or luggage to be restricted). Please consult your Ford Dealer or the Owner's Manual (available at ford.com.au) for guidance. 3. Kerb Weight includes the vehicle with a full tank of fuel, without occupants, luggage or cargo and with all standard equipment. Additional weight of optional features must be taken into account when calculating kerb weight. 4. Subject to State and Territory regulations. Payload is defined as the Gross Vehicle Mass minus the kerb mass. Payload is the maximum combined value of occupants, cargo, added options, added structures and tow ball download (when towing). GVM must not be exceeded. 5. iPod is a trademark of Apple Inc. See ford.com.au for iPod compatibility. 6. Bluetooth® is a registered trademark of Bluetooth SIG, Inc. and is under license. Some phones not compatible. 7. Not all SYNC® and SYNC® 3 features are compatible with all phones. For compatibility, see ford.com.au/sync. 8. Rear mud flaps on pick-up models only. 9. Prestige paint is an option that incurs an additional charge. 10. Rear bumper body colour, excludes rear bumper sensor device. 11. Traffic Message Channel is currently provided through an arrangement with Intellematics Australia Pty Ltd (Intellematics). The ongoing provision of this feature cannot be guaranteed if Ford's arrangements with Intellematics cease for any reason. 12. Features included with technology pack option available

4x2 Specifications and Options

Model	XL Single C/C 2.2 D	XL Single C/CHR 2.2 D	XL Single P/U 2.2 D	XL Super C/C HR 2.2 D	XLT Super P/U HR 3.2 D	XL Double C/C HR 2.2 D	XL Double P/U HR 2.2 D ¹	XLT Double P/U HR 3.2 D
Exterior continued								
Exterior Mirrors - Black	S	S	S	S	-	S	S	-
Exterior Mirrors - Chrome	-	-	-	-	S	-	-	S
Exterior Mirrors: Power Adjustable, Power Folding, Heated, Turn Indicator	-	-	-	-	S	-	-	S
Front and Rear Mud Flaps ⁸	S	S	S	S	S	S	S	S
Front Bumper - Body Colour	S	S	S	S	S	S	S	S
Front Fog Lamps	-	-	-	-	S	-	-	S
Grille - Black	S	S	S	S	-	S	S	-
Grille - Chrome	-	-	-	-	S	-	-	S
Plastic Side Steps with Bright Inserts	-	-	-	-	S	-	-	S
Power Adjustable Exterior Mirrors	S	S	S	S	-	S	S	-
Prestige Paint ⁹	O	O	O	O	O	O	O	O
Privacy Glass	-	-	-	-	S	-	-	S
Projector Headlamps	-	-	-	-	S	-	-	S
Rear Bumper - Body Colour	-	-	S	-	-	-	S	-
Rear Bumper - Chrome Steel ¹⁰	-	-	-	-	S	-	-	S
Sports Bar Chrome Tubular	-	-	-	-	S	-	-	S
Tailgate Handle - Black	-	-	S	-	-	-	S	-
Tailgate Handle - Chrome	-	-	-	-	S	-	-	S
Tailgate Lock (manual)	-	-	S	-	S	-	S	S
Tow Bar	-	-	-	-	S	-	-	S
Seating								
6-way Manual Driver Seat Adjustment with Lumbar Support	S	S	S	S	S	S	S	S
Front Bucket Seats	S	S	S	S	S	S	S	S
XLT Leather Accented Seats	-	-	-	-	-	-	-	O
Factory Fitted Options								
Automatic Transmission	-	O	-	S	S	S	O	O
XLT Leather Accented Seats	-	-	-	-	-	-	-	O
XLT Tech Pack (Incl. Adaptive Cruise Control with Forward Collision Alert, Driver Impairment Monitor, Lane Keeping Aid & Lane Departure Warning) ¹²	-	-	-	-	O	-	-	O
Vehicle Masses								
Front Axle Load (Maximum) (kg)	1325	1480	1325	1480	1480	1480	1480	1480
Gross Combined Mass (kg)	5425	6000	5425	6000	6000	6000	6000	6000
Gross Vehicle Mass (kg)	2925	3200	2925	3200	3200	3200	3200	3200
Kerb Weight (kg) ³	1659	1717	1808	1776	2053	1838	1963	2105
Payload (kg) ⁴	1265	1480	1115	1420	1145	1360	1235	1095
Rear Axle Load (Maximum) (kg)	1755	1850	1755	1850	1850	1850	1850	1850
Exterior Body and Box Elements								
Bedliner with 12V Socket	-	-	-	-	S	-	-	S
Inner Tie Downs	-	-	S	-	S	-	S	S
Load Box Illumination	-	-	S	-	S	-	S	S
Load Rest	-	-	S	-	-	-	S	-
Outer Tie Downs	-	-	S	-	-	-	S	-
Pick-up Box Dimensions (mm)								
Length - at floor	-	-	2317	-	1847	-	1549	1549
Length - top of box	-	-	2253	-	1783	-	1485	1485
Pick-up Box Height - at centreline of axle	-	-	511	-	511	-	511	511
Pick-up Box Height - floor height to ground	-	-	723	-	840	-	835	835
Width - between wheelhouses	-	-	1139	-	1139	-	1139	1139
Width - pick-up box	-	-	1560	-	1560	-	1560	1560
Width - rear opening	-	-	1330	-	1330	-	1330	1330
Exterior Dimensions (mm)								
Overall Height	1703	1800	1703	1804	1821	1815	1815	1821
Overall Width (exterior mirrors extended)	2163	2163	2163	2163	2163	2163	2163	2163
Overall Width (exterior mirrors folded)	1977	1977	1977	1977	1977	1977	1977	1977
Overall Width (excluding mirrors)	1860	1860	1860	1860	1860	1860	1860	1860
Overall Length (with rear bumper where fitted, no bull bar)	5113	5113	5362	5113	5426	5113	5362	5426
Front Overhang	908	908	908	908	908	908	908	908
Rear Overhang	985	985	1234	985	1226	985	1234	1226
Front and Rear Track	1590	1560	1590	1560	1560	1560	1560	1560
Wheelbase	3220	3220	3220	3220	3220	3220	3220	3220
Ground Clearance (unladen, mm)	201	232	201	232	237	232	232	237
Wading Depth (mm)	600	800	600	800	800	800	800	800
Approach Angle (unladen, degrees)	22	28	22	28	29	28	28	29
Departure Angle (unladen, degrees) measured to: a) rear bumper on XL Pick-up models, b) spare tyre on XL Cab Chassis models, c) tow bar on XLT and Wildtrak models	24	28	17	24	21	28	27	21
Ramp Breakover Angle (degrees)	17	24	17	24	25	24	24	25
Turning Circle - Kerb to kerb (m)	11.9	12.7	11.9	12.7	12.7	12.7	12.7	12.7
Interior Dimensions (mm)								
2nd Row Headroom	-	-	-	938	938	986	986	986
2nd Row Legroom	-	-	-	796	796	902	902	902
2nd Row Shoulder Room	-	-	-	1400	1400	1430	1430	1430
Front Headroom	1024	1024	1024	1024	1024	1022	1022	1022
Front Legroom	1058	1058	1058	1058	1058	1058	1058	1058
Front Shoulder Room	1440	1440	1440	1440	1440	1440	1440	1440

S – Standard O – Factory Option that can be ordered before a vehicle is manufactured A – Accessory that can be added at any time P – Part of a Pack

on XLT (at additional cost) and standard on Wildtrak. Driver-assist features are supplemental and do not replace the driver's attention, judgment and need to control the vehicle. May not operate in some driving and road conditions (including at certain speeds) or adverse weather. Lane Keeping Aid & Lane Departure Warning System uses sensors that are designed to operate at speeds over 64km/h on multi-lane roads with clearly visible lane markings. 13. Driver-assist features are supplemental and do not replace the driver's attention, judgment and need to control the vehicle. May not operate in some driving and road conditions (including at certain speeds) or adverse weather. 14. Emergency Assistance feature needs a paired and in range mobile phone. Can activate in the event of a crash which deploys an airbag or activates the fuel pump shut off.

4x4 Specifications and Options

Model	XL Single C/C 3.2D	XL Plus Single C/C 3.2D	XL Super C/C 3.2D	XL Super P/U 3.2D	XL Super P/U 3.2D	XL Double C/C 2.2D/3.2D	XL Plus Double C/C 3.2D	XL Double P/U 2.2D/3.2D	XL Plus Double P/U 3.2D	XL Double P/U 3.2D	XLT Double P/U 3.2D	Wildtrak Double P/U 3.2D
Safety, Security and Driver Assistance												
3 Point Lap Sash Seat Belt - All Positions	S	S	S	S	S	S	S	S	S	S	S	S
Adaptive Cruise Control with Forward Collision Alert ¹²	-	-	-	-	P	-	-	-	-	-	P	S
Adjustable Speed Limiter	S	-	S	S	S	S	-	S	-	S	S	S
Airbags - Driver and front passenger	S	S	S	S	S	S	S	S	S	S	S	S
Airbags - Front seat side	S	S	S	S	S	S	S	S	S	S	S	S
Airbags - Side curtain	S	S	S	S	S	S	S	S	S	S	S	S
Alarm with perimeter, interior motion and vehicle inclination sensors	S	S	S	S	S	S	S	S	S	S	S	S
Beltminder™ - Driver and front passenger	S	S	S	S	S	S	S	S	S	S	S	S
Cruise Control with steering wheel mounted buttons	S	S	S	S	S	S	S	S	S	S	S	S
Driver Impairment Monitor ¹²	-	-	-	-	P	-	-	-	-	-	P	S
Emergency Assistance ¹⁴	S	S	S	S	S	S	S	S	S	S	S	S
Hill Descent Control ¹³	S	S	S	S	S	S	S	S	S	S	S	S
Lane Departure Warning with Lane Keeping Aid ¹²	-	-	-	-	P	-	-	-	-	-	P	S
eLocking Rear Differential	S	S	S	S	S	S	S	S	S	S	S	S
MyKey®	-	-	-	-	S	-	-	-	-	-	S	S
Park Sensors - Front	-	-	-	-	S	-	-	-	-	-	S	S
Park Sensors - Rear	-	-	-	S	S	-	-	S	-	S	S	S
Rear View Camera	-	-	-	S	S	-	-	S	-	S	S	S
Remote Keyless Entry - 1 Fob provided	S	S	S	S	-	S	S	S	S	-	-	-
Remote Keyless Entry - 2 Fobs provided	-	-	-	-	S	-	-	-	-	S	S	S
Tyre Pressure Monitoring System	-	-	-	-	S	-	-	-	-	-	S	S
Volumetric Alarm with Battery Backup System	S	S	S	S	S	S	S	S	S	S	S	S
Dynamic Stability Control (DSC) incorporating ABS ¹³ • Hill Launch Assist ¹³ • Trailer Sway Control ¹³ • Load Adaptive Control ¹³ • Emergency Brake Assist ¹³ • Roll Over Mitigation ¹³ • Emergency brake light • Traction Control System ¹³												
Comfort and Convenience												
2 Child Seat Upper Anchorage Points	-	-	S	S	S	S	S	S	S	S	S	S
2 Front Auxillary 12V Power Outlets	S	S	S	S	S	S	S	S	S	S	S	S
230V Inverter in Rear Console	-	-	S	S	S	S	-	S	-	S	S	S
Ambient Lighting	-	-	-	-	-	-	-	-	-	-	-	S
Auto On/Off Headlamps	S	S	S	S	S	S	S	S	S	S	S	S
Centre Console - Single Lid with 2 Cup Holders & Coin Storage	S	S	S	S	S	S	S	S	S	S	S	S
Climate Control Dual Zone Automatic	-	-	-	-	S	-	-	-	-	-	S	S
Climate Control Single Zone Manual	S	S	S	S	-	S	S	S	S	S	-	-
Cooled Console	-	-	-	-	S	-	-	-	-	-	S	S
Dual Colour 4.2" Instrumentation Screens	-	-	-	-	S	-	-	-	-	-	S	S
Electrochromatic Rear View Mirror	-	-	-	-	S	-	-	-	-	-	S	S
Expanded Wiring Harness with 4-switch Auxillary Bezel	-	S	-	-	-	-	S	-	S	-	-	-
Floor Coverings - Carpet	-	-	-	-	S	-	-	-	-	-	S	S
Floor Coverings - Vinyl	S	S	S	S	-	S	S	S	S	-	-	-
Floor Mats - Driver Only	-	-	-	-	S	-	-	-	-	-	S	-
Floor Mats Wildtrak - All Positions	-	-	-	-	-	-	-	-	-	-	-	S
Leather Wrapped Steering Wheel & Gear Knob	-	-	-	-	S	-	-	-	-	-	S	-
Manual Day/Night Inside Rear View Mirror	S	S	S	S	-	S	S	S	S	S	-	-
Power Front Windows (Auto Driver)	S	S	S	S	S	S	S	S	S	S	S	S
Power Rear Windows	-	-	-	-	-	S	S	S	S	S	S	S
Rain Sensing Windscreen Wipers	-	-	-	-	S	-	-	-	-	-	S	S
Rear Auxillary 12V Power Outlet	-	-	-	-	S	-	-	-	-	-	S	S
Rear Window Defrost	-	-	-	-	S	S	S	S	S	S	S	S
Second Battery	-	S	-	-	-	-	S	-	S	-	-	-
Audio And Communication												
3.5" Ice Blue Multi-Function Display	-	S	-	-	-	-	S	-	S	-	-	-
4.2" Colour Multi-Function Display	S	-	S	S	-	S	-	S	-	S	-	-
8" Colour Touch Screen	-	-	-	-	S	-	-	-	-	-	S	S
4 Speakers (2 Tweeters, 2 Woofers)	S	S	-	-	-	-	-	-	-	-	-	-
6 Speakers (2 Tweeters, 4 Woofers)	-	-	S	S	S	S	S	S	S	S	S	S
AM/FM Stereo Radio	S	S	S	S	S	S	S	S	S	S	S	S
USB Integration ⁵	S	S	S	S	S	S	S	S	S	S	S	S
Bluetooth® with Voice Control ⁶	S	S	S	S	S	S	S	S	S	S	S	S
DAB Radio	-	-	-	-	S	-	-	-	-	-	S	S
Satellite Navigation with Traffic Management Channel ¹¹	-	-	-	-	S	-	-	-	-	-	S	S
Single CD Player (MP3 compatible)	S	S	S	S	S	S	S	S	S	S	S	S
SYNC® ⁷	S	S	S	S	-	S	S	S	S	S	-	-
SYNC®3 ⁷	-	-	-	-	S	-	-	-	-	-	S	S
Exterior												
16" Alloy Wheels	-	-	-	-	-	-	-	-	-	-	S	-
16" Steel Wheels	S	-	S	S	-	S	-	S	-	-	-	-
17" Alloy Wheels	-	-	-	-	S	-	-	-	-	-	S	-
17" Steel Wheels with All-terrain Tyres	-	S	-	-	-	-	S	-	S	-	-	-
18" Alloy Wheels	-	-	-	-	-	-	-	-	-	-	-	S
Body Mounted Indicators	S	S	S	S	-	S	S	S	S	S	-	-
Centre High Mounted Stop Light	-	-	S	S	-	S	S	S	S	S	-	-
Daytime Running Lamps	-	S	-	-	-	-	S	-	S	-	-	-
Door Handle - Black	S	S	S	S	-	S	S	S	S	S	-	-
Door Handle - Chrome	-	-	-	-	S	-	-	-	-	-	S	-
Door Handle - Monument Grey	-	-	-	-	-	-	-	-	-	-	-	S
Exterior Mirrors - Black	S	S	S	S	-	S	S	S	S	S	-	-
Exterior Mirrors - Chrome	-	-	-	-	S	-	-	-	-	-	S	-
Exterior Mirrors - London Grey	-	-	-	-	-	-	-	-	-	-	S	-
Exterior Mirrors - Monument Grey	-	-	-	-	-	-	-	-	-	-	-	S
Exterior Mirrors: Power Adjustable, Power Folding, Heated, Turn Indicator	-	-	-	-	S	-	-	-	-	-	S	-
Exterior Mirrors: Power Adjustable, Power Folding, Heated, Turn Indicator, Puddle Lamps	-	-	-	-	-	-	-	-	-	-	-	S
Front and Rear Mud Flaps ⁸	S	-	S	S	S	S	-	S	-	S	S	S
Front Bumper - Black	-	S	-	-	-	-	S	-	S	-	-	-
Front Bumper - Body Colour	S	-	S	S	S	S	-	S	-	S	S	S

1. Fuel consumption and emissions as per ADR 81/02 (combined cycle) and to be used for vehicle comparison purposes only. It is unlikely that this fuel consumption and emissions figure will be achieved in real world driving conditions. Actual fuel consumption and emissions will depend on many factors including the driver's habits, prevailing conditions and the vehicle's equipment, condition and use. 2. Maximum braked towing capacity when Ford Genuine Tow Pack fitted. Subject to regulatory requirements and vehicle weight restrictions (which may require occupants and / or luggage to be restricted). Please consult your Ford Dealer or the Owner's Manual (available at ford.com.au) for guidance. 3. Kerb Weight includes the vehicle with a full tank of fuel, without occupants, luggage or cargo and with all standard equipment. Additional weight of optional features must be taken into account when calculating kerb weight. 4. Subject to State and Territory regulations. Payload is defined as the Gross Vehicle Mass minus the kerb mass. Payload is the maximum combined value of occupants, cargo, added options, added structures and tow ball download (when towing). GVM must not be exceeded. 5. iPod is a trademark of Apple Inc. See ford.com.au for iPod compatibility. 6. Bluetooth® is a registered trademark of Bluetooth SIG, Inc. and is under license. Some phones not compatible. 7. Not all SYNC® and SYNC®3 features are compatible with all phones. For compatibility, see ford.com.au/sync. 8. Rear mud flaps on pick-up models only. 9. Prestige paint is an option that incurs an additional charge. 10. Rear bumper body colour, excludes rear bumper sensor device. 11. Traffic Message Channel is currently provided through an arrangement with Intelermatics Australia Pty Ltd (Intelermatics).

4x4 Specifications and Options

Model	XL Single C/C 3.2D	XL Plus Single C/C 3.2D	XL Super C/C 3.2D	XL Super P/U 3.2D	XLT Super P/U 3.2D	XL Double C/C 2.2D/3.2D	XL Plus Double C/C 3.2D	XL Double P/U 2.2D/3.2D	XL Plus Double P/U 3.2D	XLS Double P/U 3.2D	XLT Double P/U 3.2D	Wildtrak Double P/U 3.2D
Exterior continued												
Front Bumper Insert - Accent Monument Grey	-	-	-	-	-	-	-	-	-	-	-	S
Front Fog Lamps	-	-	-	-	S	-	-	-	-	S	S	S
Grille - Monument Grey	-	-	-	-	-	-	-	-	-	-	-	S
Grille - Black	S	S	S	S	-	S	S	S	S	-	-	-
Grille - Chrome	-	-	-	-	S	-	-	-	-	-	S	-
Grille - London Grey	-	-	-	-	-	-	-	-	-	S	-	-
Plastic Side Steps	-	-	-	-	-	-	S	-	S	-	-	-
Plastic Side Steps with Bright Inserts	-	-	-	-	S	-	-	-	-	-	S	-
Plastic Side Steps with Brushed Inserts	-	-	-	-	-	-	-	-	-	-	-	S
Power Adjustable Exterior Mirrors	S	S	S	S	-	S	S	S	S	S	-	-
Prestige Paint ²	O	O	O	O	O	O	O	O	O	O	O	O
Privacy Glass	-	-	-	-	S	-	-	-	-	-	S	S
Projector Headlamps	-	-	-	-	S	-	-	-	-	-	S	S
Rear Bumper - Black	-	S	-	-	-	-	S	-	S	-	-	-
Rear Bumper - Body Colour	-	-	-	S	-	-	-	S	-	S	-	-
Rear Bumper - Chrome Steel ¹⁰	-	-	-	-	S	-	-	-	-	-	S	-
Rear Bumper - Monument Grey ¹⁰	-	-	-	-	-	-	-	-	-	-	-	S
Sports Bar Chrome Tubular	-	-	-	-	S	-	-	-	-	-	S	-
Sports Bar Wildtrak	-	-	-	-	-	-	-	-	-	-	-	S
Tailgate Handle - Black	-	S	-	S	-	-	-	S	S	S	-	-
Tailgate Handle - Chrome	-	-	-	-	S	-	-	-	-	-	S	-
Tailgate Handle - Monument Grey	-	-	-	-	-	-	-	-	-	-	-	S
Tailgate Lock (manual)	-	-	-	S	S	-	-	S	S	S	S	S
Tow Bar	-	S	-	-	S	-	S	-	S	-	S	S
Seating												
6-way Manual Driver Seat Adjustment with Lumbar Support	S	S	S	S	S	S	S	S	S	S	S	-
8-way Power Driver Seat Adjustment with Lumbar Support	-	-	-	-	-	-	-	-	-	-	-	S
Front Bucket Seats	S	S	S	S	S	S	S	S	S	S	S	S
Heated Front Seats	-	-	-	-	-	-	-	-	-	-	-	S
Heavy Duty Canvas Seat Covers	-	S	-	-	-	-	S	-	S	-	-	-
XLT Leather Accented Seats	-	-	-	-	-	-	-	-	-	-	O	-
Wildtrak Leather Accented Seats	-	-	-	-	-	-	-	-	-	-	-	S
Factory Fitted Options												
Automatic Transmission	O	S	O	-	O	O	S	O	S	O	O	O
Steel Bull Bar	-	O	-	-	-	-	O	-	O	-	-	-
XLT Leather Accented Seats	-	-	-	-	-	-	-	-	-	-	O	-
XLT Tech Pack (Incl. Adaptive Cruise Control with Forward Collision Alert, Driver Impairment Monitor, Lane Keeping Aid & Lane Departure Warning ¹²)	-	-	-	-	O	-	-	-	-	-	O	-
Vehicle Masses												
Front Axle Load (Maximum) (kg)	1480	1480	1480	1480	1480	1480	1480	1480	1480	1480	1480	1480
Gross Combined Mass (kg)	6000	6000	6000	6000	6000	6000	6000	6000	6000	6000	6000	6000
Gross Vehicle Mass (kg)	3200	3200	3200	3200	3200	3200	3200	3200	3200	3200	3200	3200
Kerb Weight (kg) ³	1858	1949	1928	2036	2151	1931	2086	2057	2210	2111	2202	2250
Payload (kg) ⁴	1340	1250	1270	1160	1045	1265	1110	1140	990	1085	995	950
Rear Axle Load (Maximum) (kg)	1850	1850	1850	1850	1850	1850	1850	1850	1850	1850	1850	1850
Exterior Body and Box Elements												
Bedliner with 12V Socket	-	-	-	-	S	-	-	-	-	-	S	S
Inner Tie Downs	-	-	-	S	S	-	-	S	S	S	S	S
Load Box Illumination	-	-	-	S	S	-	-	S	-	S	S	S
Load Rest	-	-	-	S	-	-	-	S	S	S	-	-
Outer Tie Downs	-	-	-	S	-	-	-	S	S	-	-	-
Roller Shutter	-	-	-	-	-	-	-	-	-	-	-	S
Pick-up Box Dimensions (mm)												
Length - at floor	-	-	-	1847	1847	-	-	1549	1549	1549	1549	1549
Length - top of box	-	-	-	1783	1783	-	-	1485	1485	1485	1485	1485
Pick-up Box Height - at centreline of axle	-	-	-	511	511	-	-	511	511	511	511	511
Pick-up Box Height - floor height to ground	-	-	-	835	840	-	-	835	835	835	840	840
Width - between wheelhouses	-	-	-	1139	1139	-	-	1139	1139	1139	1139	1139
Width - pick-up box	-	-	-	1560	1560	-	-	1560	1560	1560	1560	1560
Width - rear opening	-	-	-	1330	1330	-	-	1330	1330	1330	1330	1330
Exterior Dimensions (mm)												
Overall Height	1800	1800	1804	1804	1810	1815	1815	1815	1815	1815	1821	1848
Overall Width (exterior mirrors extended)	2163	2163	2163	2163	2163	2163	2163	2163	2163	2163	2163	2163
Overall Width (exterior mirrors folded)	1977	1977	1977	1977	1977	1977	1977	1977	1977	1977	1977	1977
Overall Width (excluding mirrors)	1860	1860	1860	1860	1860	1860	1860	1860	1860	1860	1860	1860
Overall Length (with rear bumper where fitted, no bull bar)	5113	5426	5113	5362	5426	5113	5426	5362	5426	5362	5426	5426
Front Overhang	908	908	908	908	908	908	908	908	908	908	908	908
Rear Overhang	985	985	985	1234	1226	985	985	1234	1234	1234	1226	1226
Front and Rear Track	1560	1560	1560	1560	1560	1560	1560	1560	1560	1560	1560	1560
Wheelbase	3220	3220	3220	3220	3220	3220	3220	3220	3220	3220	3220	3220
Ground Clearance (unladen, mm)	232	232	232	232	237	232	232	232	232	232	237	237
Wading Depth (mm)	800	800	800	800	800	800	800	800	800	800	800	800
Approach Angle (unladen, degrees)	28	28	28	28	29	28	28	28	28	28	29	29
Departure Angle (unladen, degrees) measured to: a) rear bumper on XL Pick-up models, b) spare tyre on XL Cab Chassis models, c) tow bar on XLT and Wildtrak models	28	21	28	27	21	28	21	27	21	27	21	21
Ramp Breakover Angle (degrees)	24	24	24	24	25	24	24	24	24	24	25	25
Turning Circle - Kerb to kerb (m)	12.7	12.7	12.7	12.7	12.7	12.7	12.7	12.7	12.7	12.7	12.7	12.7
Interior Dimensions (mm)												
2nd Row Headroom	-	-	938	938	938	986	986	986	986	986	986	986
2nd Row Legroom	-	-	796	796	796	902	902	902	902	902	902	902
2nd Row Shoulder Room	-	-	1400	1400	1400	1430	1430	1430	1430	1430	1430	1430
Front Headroom	1024	1024	1024	1024	1024	1022	1022	1022	1022	1022	1022	1022
Front Legroom	1058	1058	1058	1058	1058	1058	1058	1058	1058	1058	1058	1058
Front Shoulder Room	1440	1440	1440	1440	1440	1440	1440	1440	1440	1440	1440	1440

S – Standard O – Factory Option that can be ordered before a vehicle is manufactured A – Accessory that can be added at any time P – Part of a Pack

The ongoing provision of this feature cannot be guaranteed if Ford's arrangements with Interleamatics cease for any reason. 12. Features included with technology pack option available on XLT (at additional cost) and standard on Wildtrak. Driver-assist features are supplemental and do not replace the driver's attention, judgment and need to control the vehicle. May not operate in some driving and road conditions (including at certain speeds) or adverse weather. Lane Keeping Aid & Lane Departure Warning System uses sensors that are designed to operate at speeds over 64km/h on multi-lane roads with clearly visible lane markings. 13. Driver-assist features are supplemental and do not replace the driver's attention, judgment and need to control the vehicle. May not operate in some driving and road conditions (including at certain speeds) or adverse weather. 14. Emergency Assistance feature needs a paired and in range mobile phone. Can activate in the event of a crash which deploys an airbag or activates the fuel pump shut off.

Personalise your Ranger. The choice is yours.

Exterior Styling	XL	XL Plus	XLS	XLT	Wildtrak
Alloy Wheels 16 ¹³ .	A	A	-	-	-
Alloy wheel nut locking set	A	A	A	A	A
EGR Fender Flares ¹ .	A	A	A	A	A
Side Steps	A	S	A	S	S
Snorkel	A	A	A	A	A
Sports Bar	A	A	A	S	-
Exterior Protection					
Bonnet Protector	A	A	A	A	A
Bull Bar Steel	A	A	A	A	A
Headlamp Guards	A	A	A	A	A
Lumen LED Light Bar ¹	A	A	A	A	A
Nudge Bar	A	A	A	A	A
Aeroklas Pick Up Box Bedliners Overrail Pick Ups ¹	A	A	A	-	-
Sportsguard Bedliner by Proform Double Cab Pick Ups ¹	A	A	A	-	-
Pick Up Box Bedliners Underrail – Super and Double Cab Pick Ups	A	A	A	S	S
Road Gear Pick Up Box Floor Liner Super and Double Cab Pick Ups ¹	A	A	A	-	-
Pick Up Box Bedrail Covers Double Cab Pick Ups	A	A	A	A	-
Pick Up Box Tailgate liner Pick Ups	A	A	A	S	S
Reverse Camera Chassis Cabs ²	A	A	S	S	S
Spare Wheel Lock Kit	A	A	A	A	A
Interior Styling and Protection					
All Weather Floor Mats Super and Double Cabs	-	-	A	A	A
Carpet Mats Super and Double Cabs	-	-	A	A	S
Scuff Plates Super and Double Cabs	A	A	A	A	A
Canvas Seat Covers	A	A	A	A	A
Towing, Carrying and Outdoors					
Lumen 12V Power Sockets – Pick Ups ¹	A	A	A	A	A
Tub Illumination System ⁴ .	A	A	A	A	A
Alloy Tray Cab Chassis ¹	A	A	-	-	-
Aeroklas Canopies Super and Double Cab Pick Ups ¹	A	A	A	A	A
Aeroklas Canopy Carry Bars ¹	A	A	A	A	A
Aeroklas Cargo Boxes Pick Up Cabs ^{1,2} .	A	A	A	A	A
Carry Bars ¹	A	A	A	A	A
Rhino Rack Awnings, Tents and Bike Carriers ¹	A	A	A	A	A
Rhino Rack LED Lighting Kits for Awnings ¹	A	A	A	A	A
Rhino Rack, Roller Shutter and Carry Bars	-	-	-	-	A
Rhino Rack Wheel Step ¹	A	A	A	A	A
Aeroklas Tailgate Dust Reduction Kit Pick Ups ¹	A	A	A	A	-
EGR Tonneau Covers Hard 1 or 3 Piece Double Cab Pick Ups ¹	A	A	A	A	-
EGR Tonneau Covers Soft Pick Ups ¹	A	A	A	A	
Towpack	A	S	A	S	S
Oricom UHF CB Radios ¹	A	A	A	A	A

S = Standard. A = Accessory that can be added at any time. O = Optional. - = Not available.

1. This accessory is a Supplier Branded Accessory and is not manufactured or Warranted by Ford. The warranty is provided by the manufacturer of the accessory. The information in this document relating to the accessory is based on information provided by the accessory manufacturer. Contact your authorised Ford Dealer for details of the accessory manufacturer's warranty applicable to this accessory. 2. For use in conjunction with bedliners. 3. Wheels and tyres sold separately. 4. This accessory is a Ford Licensed Accessory and is covered by the Ford Express Parts and Accessories Warranty.

The Ford Vehicle Personalisation accessory range lets you personalise your Ranger to perfectly suit your needs.



Aeroklas canopy. This rear hatch canopy increases your storage space and provides secure storage for your valuable equipment and tools.



EGR soft tonneau cover. Helps protect equipment and valuables from rain and dust.



Nudge bar. Tested to Ford's stringent engineering and safety standards, this nudge bar helps protect the front end of the vehicle.



EGR hard tonneau cover.¹ Helps to keep your valuable equipment and tools secure. Features a single point push button system for easy locking.

FORD SERVICE

Our Commitment to You

Convenience. Reliability. And no nasty surprises. That's what service should be. And that's exactly what Ford promises when you have your car serviced. Feel at ease knowing that your car is being serviced by factory trained technicians using specialised diagnostic equipment. After all, nobody knows your Ford better than we do.

Five Year / Unlimited Kilometre Warranty

As a Ford owner you will now receive a Five Year / Unlimited Kilometre Ford Express New Vehicle Warranty with your purchase¹. For details about this warranty please visit: www.ford.com.au/owners/warranties



Service Experience

Speak to your participating Ford Dealer today about how we can help you make the most out of your vehicle experience.



Free Loan Car

So we can keep you on the road when you're getting a scheduled service you can take advantage of our Free Loan Car program⁴.



Auto Club Membership

Getting a flat tyre or battery is never convenient so State Auto Club Membership and Roadside Assistance for up to 12 months will be included with your next standard service, for up to seven years/unlimited kilometres³.



Service Price Promise

With Ford's Service Price Promise, you'll know what you're going to pay for a standard service before you even come in. So there are no nasty surprises for the life of your Ford⁵.



Sat Nav Map Updates

Never lose your way again with the latest map data for your Satellite Navigation system. If your vehicle has SYNC[®] 3 with Satellite Navigation, you'll receive yearly map updates for up to seven years with your scheduled servicing. If your vehicle has SYNC[®] 2 with Satellite Navigation, you'll receive yearly map updates until September 2024².



- VEHICLE REPORT CARD
- ONLINE BOOKING
- BRAKES PRICE PROMISE⁷

- LOW PRICE TYRE GUARANTEE PRICE MATCH PROGRAM⁶

- 24/7 ACCESS TO FORD CUSTOMER RELATIONSHIP CENTRE

Now that's what Service should be.

Contact us

If you have any questions or concerns, please contact our Customer Relationship Centre on 13 FORD (13 3673) or email customers@fordccr.com.au

Running a fleet?

Our Ford Fleet team is here to assist you in any way we can. Please call 1300 13 13 30 or email askfleet@ford.com

Ford For Good

From supporting national causes to community volunteering, we take our social responsibility seriously. Find out more at ford.com.au/about/community



1. Warranty conditions apply. 5 year/unlimited km Ford Express New Vehicles Warranty applies to new, demonstrator and service loaner vehicles delivered from 1 May 2018. Our goods come with consumer guarantees that cannot be excluded under the Australian Consumer Law. Our warranty does not limit and may not exceed your rights under those guarantees. 2. Available at participating Dealers. Customers must comply with scheduled servicing intervals. See www.ford.com.au/service/t-and-c for full terms. 3. Available to Private and Blue Business Fleet customers with vehicles 7 years old or less. State Auto Club Membership & Roadside Assistance is included for 12 months or until your next eligible standard service (whichever occurs first) at participating Dealers. Customers must comply with scheduled servicing intervals to maintain continuity of membership. New Transit vans are covered by a 12 month Ford Vancare Roadside Assistance product and therefore do not receive State Auto Club Roadside Assistance and Membership when purchased. Transit vans are only eligible to receive State Auto Club Roadside Assistance and Membership after the completion of the 1 year Ford Vancare Roadside Assistance product that is included with the sale of all new Transit vehicles. Towing will be at the customers cost for Vans with a GVM >4,490kg. See www.ford.com.au/service/owners/t-and-c for full terms. 4. Available at participating dealers on scheduled services or overnight warranty repairs. Private and Blue, Silver and Gold Business Fleet customers only. Booking may be required. See www.ford.com.au/owners/service/t-and-c/ for full terms. 5. Available at participating Ford Dealers on vehicles built from 2007. Customers will pay equal to or less than the maximum price as published by Ford for the period of the web quote for standard items in the A and B logbook service together with selected routine maintenance items. See www.ford.com.au/owners/service/t-and-c/ for full terms. 6. Available on selected tyres of listed brands that are stocked by participating Ford dealers. Competitor tyres must be new, identical and available from an Australian tyre retailer. Offer includes "4 for 3" or similar competitor offers, but excludes competitor cashback offers, gift cards, "wheel and tyre" bundles, tyres purchased under an installment payment plan, clearance and liquidation stock and any competitor quotes that cannot be verified. Offer is available to private retail and Blue Business Fleet customers who present an eligible competitor quote. Includes valid competitor's quote within 30 days after purchase. Various adjustments, including fitment and freight, apply to ensure a like-for-like price comparison. See your participating Ford dealer for full terms and conditions. Ford reserves the right to vary or withdraw the Low Price Tyre Guarantee offer at any time. 7. Available at participating Ford Dealers. Excludes F-Series, Everest, Mustang, Transit models and Performance Vehicles. Customers will pay equal to or less than the current maximum price as published by Ford at ford.com.au/owners/service/brakes. Maximum prices are subject to change. See <http://www.ford.com.au/owners/service/t-and-c/> for full terms.

This brochure details specifications and features of the PX Ranger MKII. Some driver assistance features and safety features described in this brochure are designed to function using sensors, whose performance may be affected under certain weather or environmental conditions. Not all features will be available on the entire PX Ranger MKII model range. Please visit our website www.ford.com.au for more information.

This brochure is designed to provide you with a general introduction to the Ford Products (including available optional equipment) referred to, and should be read in conjunction with the latest specification sheet. Image and illustrations are for information purposes and are indicative only. Because of changes in conditions and circumstances Ford* reserves the right, subject to all applicable laws, at any time, at its discretion, and without notice, to discontinue or change the features, designs, materials, colours and other specifications and the prices of its products, and to either permanently or temporarily withdraw any such products from the market without incurring any liability to any prospective purchaser or purchasers. The latest specification sheet should be referred to for information on the availability, ordering and use of features and optional equipment. Always consult an authorised Ford Dealer for the latest information with respect to features, specifications, prices, optional equipment and availability before deciding to place an order.

*FORD MOTOR COMPANY OF AUSTRALIA LIMITED. (A.B.N. 30 004 116 223) Registered Office: Level 1, 600 Victoria St, Richmond, Victoria 3121, Australia. PX Ranger MKII Brochure. Printed May, 2018. BHPFM0499 FRD0002291

Discover more at ford.com.au

Click to Request



Quote



Hot Deals



Test Drive



Go Further