

# LS



LS 460 | LS 600h

 LEXUS



# CONTENTS

---

12	Brand Heritage
14	Introducing LS
16	Style and Design
20	Technology
22	Safety
24	Hybrid and LS 460 F Sport
26	LS 460 Sports Luxury and LS 600h F Sport
28	Exterior Colours
30	Interior Trim
32	Specifications
34	Ownership Solutions
36	Encore Privileges

---



# HOW DO YOU MEASURE SUCCESS?

---

Success isn't measured in degrees. It's not determined by the letters after your name, but the challenges in front of your life. Success is defined by journeys travelled, challenges met and triumphs won. The eternal, unquenchable nature of achievement is that it never stops. It continually looks for ways to reinvent itself, seeking out new roads to follow and new bridges to cross. When one can accept that the journey never ends, one gets a sense that the ultimate destination is fast approaching. Such is the seemingly limitless passion of the Lexus engineers who have created the LS and those who are about to drive it.

---







# PUT ON YOUR GAME FACE

LS is alive with confidence. Its bold design persona has thrust LS firmly into the spotlight, as the dynamic curves and contours of the new Lexus corporate signature reveal the true personality of Lexus. Confident, considered, controlled. As much as LS draws attention from bystanders, once in motion it brings out a new level of confidence in the driver.

As its advanced powerplants are set free, its performance taps the emotions, inspiring you to seek out free-flowing highways and twisting mountain passes on which to let it really perform.



A silver Lexus LS is shown from a rear perspective, driving away on a multi-lane highway at night. The scene is heavily stylized with a blue color palette and a heavy rain effect, creating a sense of motion and atmosphere. The car's taillights are illuminated, and the license plate area displays 'LS 600h'. The background features blurred city lights and overpasses, suggesting an urban setting. The overall mood is sophisticated and dynamic.

# GO YOUR OWN WAY

We are all individuals, we all have unique dreams and goals, talents and temperaments. Could a luxury vehicle assert such a sense of individuality on the outside? Lexus designers have chosen an altogether different route in luxury vehicle design, creating their own design language known as L'finesse. Strident and striking to the eye, yet at the same time a design which contributes to stability and aerodynamic performance. It exudes style and luxury on the outside, while encasing radical assembly techniques to achieve remarkable levels of physical strength and rigidity. Such is the enigma of the Lexus LS.





# EXTRAORDINARY QUIETNESS SPEAKS VOLUMES

---

The finest lifestyles are immersed in stylish interiors. The finest concerts are best experienced in auditoriums bathed in utter silence. Equally, the Lexus LS creates an environment for superlative mind travel within a cabin that achieves remarkable levels of refinement and quietness. The tactile stimulation of a leather accented interior, the craftsmanship of impeccable assembly, the grace of uncompromised, uncomplicated design.

In short, an interior that takes off the blinkers and broadens horizons. In our lives, structured order ensures clarity of thought. So too, a neatly ordered hierarchy of visual displays leads logically to an ensemble of tactile controls that respond to our instincts. Here is an interior treatment that plays mind games with your emotions, instilling confidence and comfort, excitement and exhilaration, with overriding power and control. Could a motor vehicle help expand the outer limits of your imagination and inspire your mind? Lexus thinks so.

---





# PURSUING A NEW DEFINITION OF LUXURY

---

In the mid 1980s, a team of passionate designers embarked on a remarkable journey. They travelled to America and integrated themselves into an exclusive neighbourhood to better understand the intricacies of privileged lifestyles. Designers visited upscale boutiques and exclusive country clubs, to discover the true essence of western style and to learn what luxury vehicle buyers really wanted. They observed how a new definition of luxury was permeating American society. Wealth had filtered down into younger hands, and with it came a more simplistic sense of style and sophistication.

Fashion, design and architecture were being reshaped by these younger, more affluent professionals who were also turning their backs on conventional luxury vehicles, seeking a more rewarding driving experience.

At the same time, Lexus sent design teams to the French Riviera to gain a sense of European elegance, class and culture. This fact-finding mission was followed by one of the most extensive development programs ever undertaken by a motor vehicle company. The end result was the Lexus LS 400, a vehicle so extraordinary, it ultimately redirected the course of luxury vehicle design, elegance and performance.

In subsequent years, the Lexus commitment to ground-breaking design and forward thinking has continued unabated. The most recent reminder has been the unveiling of the LF-CC coupe concept at the Paris Motor Show. The LF-CC serves as a glimpse into the Lexus vehicle of tomorrow, exposing the vibrant new personality of Lexus through its breathtaking, aerodynamic design. Its new generation hybrid powerplant unleashes performance worthy of a true sports coupe, while setting new benchmarks for higher efficiency and lower emissions.<sup>(2)</sup>

Now, the best Lexus ever created has surged even further ahead. LS has been created with two advanced powerplants, including the breathtaking Lexus hybrid. Abundantly visible is a new vitality in LS, presented in two appointment levels, from the sumptuous refinement of Sports Luxury to the spirited F Sport. LS is reborn.

---





**LIFE IS WHAT  
YOU MAKE IT**



Some of us choose to travel the highway of life with grace and dignity. Our lives are lived in the finest homes, carefully embellished with well-chosen objects of art and the influences of gifted interior designers, while we are entertained by cutting edge technology. Once we journey away from such homes, driving is about reaching our chosen destination in utmost style and with ultimate poise. So Lexus has created the elegant LS 460 Sports Luxury.

Then there are those of us who seek a more energised journey. We demand control, urged along by a powerful inner drive. It's not about simply waiting for life's good fortune to come your way, but actively seeking opportunity and craving adventure. For such individuals, Lexus created the F Sport, expressed as the all-petrol V8-powered LS 460 F Sport, and the all-wheel drive LS 600h F Sport.





# CHEATING THE WIND WHILE TAKING YOUR BREATH AWAY

## STYLE AND DESIGN

Lexus has refined its own design language known as L'finesse and taken it to another level. Dramatic contours peel back from the dynamic spindle grille which sits low and wide, asserting a sense of strength and confidence. Strong character lines extend across a long, sweeping bonnet, exuding a sense of power with panache.

Headlights integrated into this bold face are no less endowed, as powerful active Bi-HID+ halogen high beams light up the darkness. The LS 600h F Sport is distinguished by intense yet highly efficient LED units. They are rendered even more effective by an Adaptive Frontlighting System (AFS) which follows your steering for improved visibility when negotiating bends and corners at night.

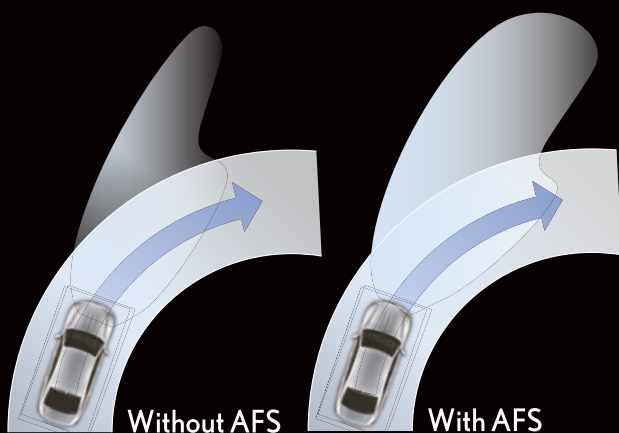
Amid this look of power, sleek L-shaped LED fog lights blend seamlessly with the outer apexes of the front air intake of the front grille, highlighted by a crisp chrome framework. Daytime Running Lights (DRL) have also been integrated into the headlight units in a dramatic L-shape.

Now, look sideways. The profile is no less compelling, projecting a look of forward motion, as clearly defined curves add structure and strength while accentuating the spacious cabin proportions. The design theme established up front is replicated in the rear, where trapezoid apexes add structure to the boot lid. L'finesse stamps its authority on the LED tail lights as light flows through L-shaped lenses, reflecting a look of power to following motorists. At the lower edges of the bodywork, angular exhaust tips have been clearly integrated into the rear bumper.

While such a design raises attention, it won't ruffle feathers, as inherent in such a design are discreet details which redirect airflow. In the apexes of the front doors, the front fender liners and underneath the floor, aerodynamic enhancements incorporating stabilising fins proven in wind tunnels help to redirect the flow of air for greater stability.



LS 460 model shown

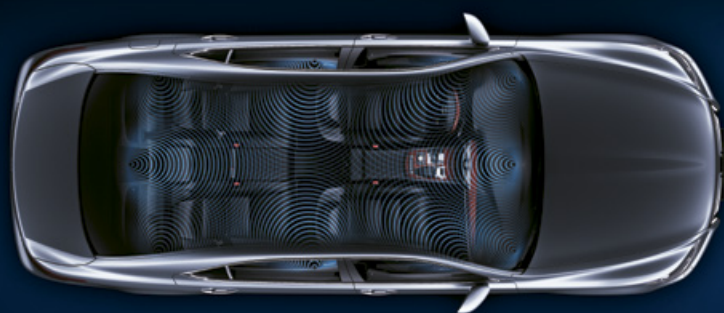


Without AFS

With AFS

# MOVING FORWARD MEANS MOVING AHEAD

STYLE AND DESIGN



19-speaker Mark Levinson Audio - overseas model shown



Blu-ray™ Rear Seat Entertainment System (RSE) shown  
- LS 460 Sports Luxury model only



Driver and Front Passenger  
Three seat position memories shown

The interior of LS embodies a seamless integration of advanced thinking with the tactile touches of traditional craftsmanship. The sophisticated look of the soft leather accented interior is offset with a contrasting bold stitching technique, punctuated by a selection of metallic mouldings and woodgrain-look finishes. The refined cabin ambience of the Lexus LS offers the perfect environment in which to immerse yourself in a most remarkable audio system.

A special partnership between Lexus and Mark Levinson has resulted in one of the most inspiring surround sound systems ever installed in a luxury vehicle. With 450W of power, you have a choice of playing discs in the DVD player for your rear passengers or listening to the Digital Radio (DAB+).<sup>(9)</sup> Specific sounds are replayed at specific locations, just as the instruments in an orchestra are placed in carefully considered positions, for a true multi-dimensional sound experience.

A rear seat entertainment system in the LS 460 Sports Luxury offers a true home cinema experience on the move. A Blu-ray™ system plays high definition video to a roof mounted 9" LCD screen. Your passengers can listen to the audio through infrared cordless headphones, while audio controls are neatly assembled in the centre armrest along with a hand held remote control unit.

The rear seats are heated in all models, while in Sports Luxury, the outer rear seats are heated and cooled, so no one need take a back seat to comfort.

Adjust the driver's seat to your preferred position, a task made effortless by 16 power-adjusted refinements, and three memory settings for instant recall prior to journeys. All around you, the cabin has been carefully designed as much for ergonomics as for aesthetics.



# WIELDING ABSOLUTE CONTROL

TECHNOLOGY

The steering wheel offers greater control in so many ways. Controls for the audio system, Climate Control, all-speed Active Cruise Control (ACC),<sup>(4)</sup> brake hold function, Lane Keeping Assist<sup>(5)</sup> and Bluetooth<sup>®(6)</sup> audio and hands free are all conveniently located on the centre spokes. This means you're able to keep your hands on the wheel for optimum control.

Turn the Drive Mode Select dial to retune the drive characteristics and ambience to suit your mood. In 'ECO' mode, throttle response, shifting and steering is relaxed, while the instrumentation is a soothing blue. 'COMFORT' ensures more compliant suspension settings, while 'NORMAL' mode assumes more typical vehicle responses for everyday journeys.



Twist to 'SPORT S' mode and the instrument display turns to a vibrant red as you experience quicker response from the throttle, steering and transmission. 'SPORT S+' brings crisper cornering and enhanced stability as the Adaptive Variable Suspension (AVS) adopts firmer suspension settings, for the ultimate adrenalin rush.



Adaptive Variable Suspension shown



5-mode Drive Mode Select shown



Prototype model shown



Advanced Pre-Collision Safety System - overseas model shown



# KNOWLEDGE IS POWER

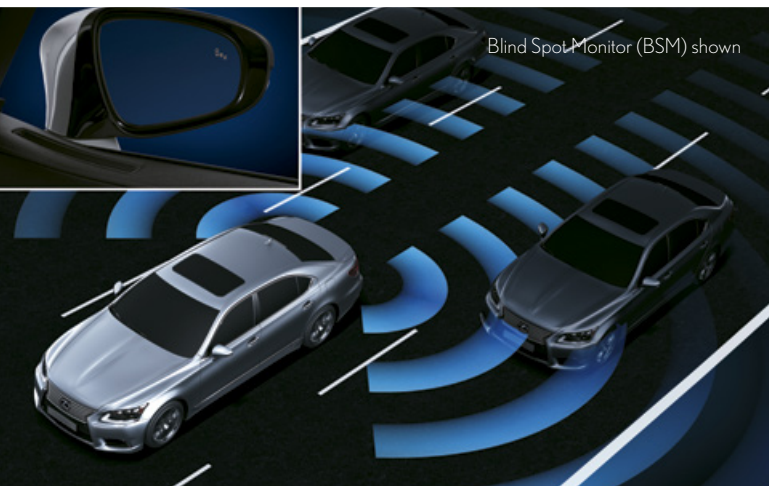
## SAFETY

Being able to clearly see ahead helps you act in advance and take pre-emptive action to minimise the consequences. That's why Lexus engineers have developed an Advanced Pre-Collision Safety System (A-PCS),<sup>(6)</sup> which is able to sense an imminent collision using a radar sensor in the front grille. In such instances, it can display a warning in the Multi-Information Display (MID), sound a buzzer, activate Pre-Collision Seatbelts then Pre-Collision Brake Assist<sup>(8)</sup> to supplement your braking effort. If the collision is then determined to be unavoidable, it can display a warning, sound a buzzer, and activate Pre-Collision Brakes to minimise collision impact.

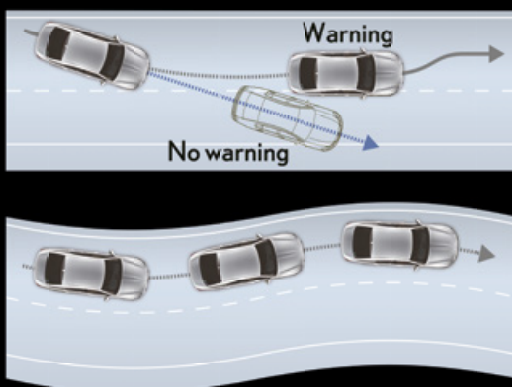
The radar sensor also interacts with the all-speed Active Cruise Control (ACC).<sup>(4)</sup> This intelligent system can detect a vehicle crossing your path, then reduce the throttle and apply the brakes to maintain a safe following distance even as the vehicle ahead changes speed.

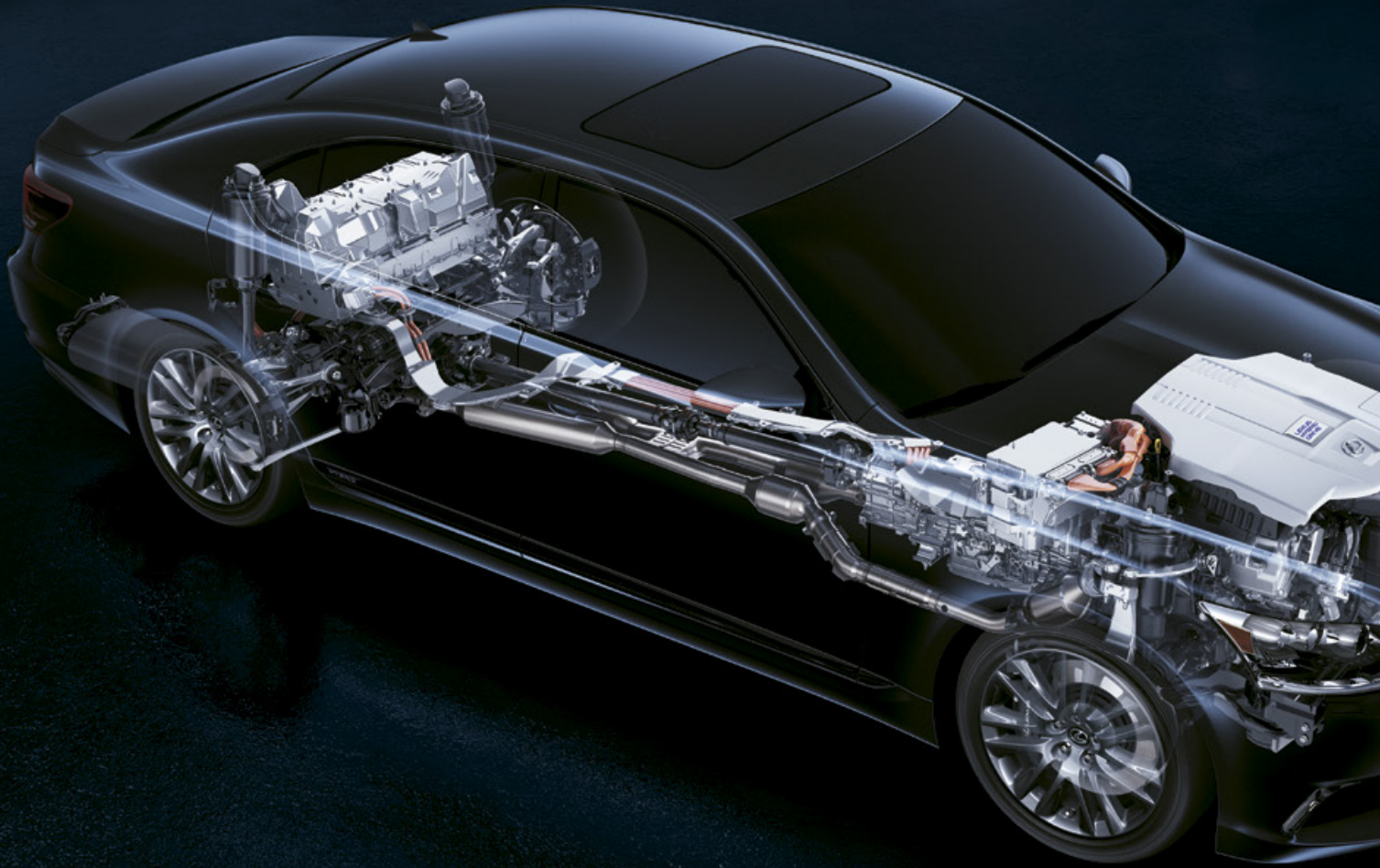
You are surrounded by a package of eight Supplemental Restraint System (SRS) airbags fitted as standard in F Sport models, including twin chamber front air bags, twin knee airbags, seat mounted side airbags for the driver and front passenger, and side curtain shield airbags. The LS 460 Sports Luxury takes SRS protection even further with rear seat mounted side airbags, to reduce the risk of injury to the outer rear seat occupants during side collisions.

For added peace of mind, a Lane Departure Warning (LDW)<sup>(10)</sup> system intelligently integrates with the all-speed Active Cruise Control (ACC).<sup>(4)</sup> You can relax knowing an audible alarm will sound, and a warning will appear in the Multi-Information Display (MID) should you ever stray off course. When you do choose to pull out of your lane and overtake, the Blind Spot Monitor (BSM) with Rear Cross Traffic Alert (RCTA)<sup>(11)</sup> provides a reassuring warning should a vehicle be detected in your blind spot.



Blind Spot Monitor (BSM) shown





Overseas LS 600h prototype model shown

# TURNING LUXURY INTO A COMPETITIVE SPORT

## LS 460 F SPORT

There'll be days when you want to loosen your collar. To breathe deeper, run freer and let your heart race. So a team of Lexus engineers passionate about motorsport have created an expression of LS which reveals a different side to Lexus, the LS 460 F Sport.

4.6 litre quad cam V8 engine with 285kW @ 6,400rpm and 493Nm @ 4,100rpm  
8-speed Sports Direct Shift (SPDS) transmission  
Bi-HID Headlamps and halogen high beam  
Adaptive High Beam (AHB)<sup>(1)</sup>  
LED Daytime Running Lights (DRL)  
19-speaker Mark Levinson Audio with USB Connection<sup>(18)</sup> and Voice Control  
Active Cruise Control (ACC)  
Heated steering wheel; heated and ventilated front seats

### F SPORT EXCLUSIVE FEATURES

Torsen<sup>®</sup> type differential  
Sports tuned air suspension  
Forged 19" BBS alloy wheels  
Front Brembo<sup>®</sup> brakes  
F Sport premium steering wheel  
F Sport mesh grille  
F Sport pedals  
F Sport shift lever  
F Sport front and rear bumper  
F Sport badging  
F Sport bucket seats  
Variable Gear Ratio Steering (VGRS)

# THE POWER OF h

---

## HYBRID

---

When two diverse energy systems can work as one in the LS 600h F Sport, the results can be stunning. Lexus engineers believe the perfect interplay of petrol energy working in harmony with electrical energy can unlock the secret to high performance, now and in the future.

Lexus has taken hybrid technology further than any other luxury vehicle manufacturer and has achieved superlative results. Lexus calls this phenomenon 'the power of h', as the power of an advanced 5.0 litre petrol engine is supplemented by electric energy. Such a system ensures acceleration worthy of a true performance car, with levels of refinement and quietness befitting a true luxury car. At highway speeds the petrol engine provides maximum impetus with ultimate quietness. Even slowing down results in a powerful flow of electricity, as the braking energy is harnessed as electrical energy and used to recharge the hybrid battery.

As much as the LS 600h F Sport promises to raise heart rates, there'll be times when you simply want to calm things down again. Simply touch the 'EV' mode switch on the centre console and you're able to drive quietly along on electric power alone, which is

rather handy when you want to slip discreetly into the garage late at night and park with zero hydrocarbon emissions.

The power of h plays to the strengths of each energy source, much like a perfect marriage. Electrical energy provides immediate response, unleashing maximum torque at minimum speeds, while a petrol engine excels at higher speeds. Think of it as the interaction of good management and clever physics working as one.

The transmission which harnesses such energy sources is equally remarkable, allowing speed to increase exponentially without the sensation of gear shifts you feel in a conventional transmission. To ensure such high output translates into high performance, the appointment of all-wheel drive in the LS 600h F Sport provides tenacious levels of grip when accelerating and cornering.

Yet the biggest rush of energy occurs in a most unlikely place – in the driver's seat. For it is only when you've experienced the near-silent rush of power followed by the instant release of adrenalin within you, that you'll truly understand what the power of h really means.

---



# AS BENCHMARKS RISE HEART RATES FOLLOW

---

## LS 460 SPORTS LUXURY

---

True status encapsulates many qualities. Courage. Passion. Elegance. Intelligence. You can't buy it, you can only earn it. From day one, LS Sports Luxury models have represented the epitome of Lexus qualities. Now those lofty ideals have been placed on an even higher pedestal.

Rear Seat Entertainment system

Rear Blu-Ray disc player

Advanced Pre-Collision Safety System (A-PCS)<sup>(\*)</sup> with full braking

19" alloy wheels

Lexus Night View

\*F Sport features not included.

---





LS 460 Sports Luxury model shown

# HIGH PERFORMANCE WITH A HIGHER INTELLIGENCE

---

## LS 600h F SPORT

---

While it possesses all the visual enhancements of its LS 460 stable mate, the LS 600h F Sport ventures into bold new territory, because Lexus believes every journey should not only transport the body, but inspire the mind.

### LS 600H F SPORT EXCLUSIVE FEATURES

5.0 litre V8 engine combined with Nickel-Metal Hydride (Ni-MH) electric motor producing 327kW combined and 520Nm @ 4,000rpm  
Continuously Variable Transmission (CVT) with 8-Pre-programmed Steps with Paddle Shift  
All Wheel Drive  
SPORT S and SPORT S+ modes  
LED Headlamps

---

# THE HYPNOTIC EFFECT OF COLOUR

## EXTERIOR COLOURS

Lexus designers are acutely mindful of the emotive role that colour plays. Certain colours convey power and strength, while others evoke a sense of elegance and grace. Yet Lexus have taken the impact of colour even further.

Such finishes also possess a timeless quality, as the self-restoring clear coat has healing properties which can eliminate minor superficial scratches on the paintwork. The elastic properties of the invisible clear coat gives it the ability to spring back and close up minor scratches.



White Nova (F Sport model only)

083



White Pearl<sup>^</sup> (Sports Luxury model only)

077



Elysium Blue<sup>^</sup> (Sports Luxury model only)

214



Onyx

212



Volcanic Bronze<sup>^</sup> (Sports Luxury model only)

358



Vermillion<sup>^</sup>

3R1



Sonic Silver

1J2



Mercury Grey<sup>^</sup>

1H9



Starlight Black<sup>^</sup>

2I7



Metallic Silk<sup>^</sup> (Sports Luxury model only)

4U7

Lexus Australia reserves the right to vary and discontinue the current interior and exterior colours, trims and colour/trim/model combinations. Colours and trims displayed here are a guide only and may vary from actual colours due to printing/display process. See your Lexus dealer to confirm colour/trim/model availability when ordering your vehicle. Metallic/mica pearlescent paint is optional and subject to additional charges on most models.

<sup>^</sup> Premium paint featured is an optional extra

# WHEN CRAFTSMANSHIP CREATES STRENGTH

---

## INTERIOR TRIM

---

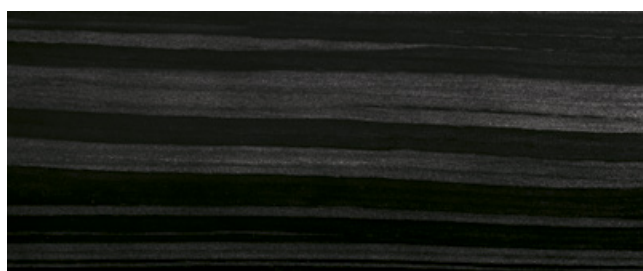
Lexus designers have created leather accented interior treatments for LS featuring a select spectrum of woodgrain-look finishes and metallic mouldings. Sitting inside one particular Lexus LS can feel quite different to another. LS 460 F Sport taps the emotions of strength, movement and power. Certain Sports Luxury interiors soothe, others excite, as colour and hue intertwines with texture, to create a haven of confidence, comfort and control, enlightening your mind and cradling your body in readiness for the journey ahead.

---

Lexus Australia reserves the right to vary and discontinue the current interior and exterior colours, trims and colour/trim/model combinations. Colours and trims displayed here are a guide only and may vary from actual colours due to printing/display process. See your Lexus dealer to confirm colour/trim/model availability when ordering your vehicle.



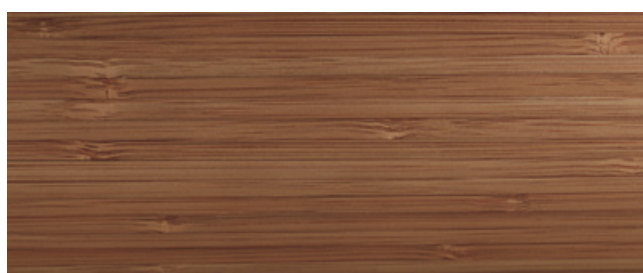
Walnut



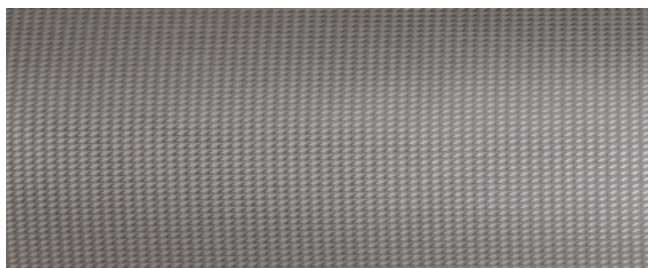
Ebony



Ashburl Matte



Bamboo



Etched Aluminium

(F Sport models only)



Ashburl Marigold



Mellow White trim  
Overseas model shown



Ivory trim  
Overseas model shown



Light Grey trim  
Overseas model shown



Black trim  
Overseas model shown



Black trim  
Overseas model shown



Topaz Brown trim  
Overseas model shown



Mellow White trim (F Sport only)  
Overseas model shown



Black trim (F Sport only)  
Overseas model shown

# LS GENERAL SPECIFICATIONS

	LS 460 F Sport	LS 460 Sports Luxury	LS 600h F Sport	
EXTERIOR	Length (mm) <sup>(12)</sup>	5090	5090	5090
	Width (mm) <sup>(12)</sup> – mirrors folded in	1875	1875	1875
	Height (mm) <sup>(12)</sup>	1455	1465	1470
	Wheelbase (mm) <sup>(12)</sup>	2970	2970	2970
	Front Track (mm) <sup>(12)</sup>	1610	1610	1610
	Rear Track (mm) <sup>(12)</sup>	1610	1610	1610
	Ground Clearance (mm) <sup>(12)</sup>	120	130	120
INTERIOR	Length (mm)	2200	2175	2200
	Width (mm)	1600	1600	1600
	Height (mm)	1165	1165	1165
WEIGHTS AND CAPACITIES	Kerb Weight (kg) <sup>(13)</sup>	1980-2020	1940-2080	2270-2340
	Gross Vehicle Mass (kg) <sup>(14)</sup>	2455	2455	2765
	Seating Capacity	5	5	5
	Luggage Capacity (L)	510	450	368
	Fuel Tank Capacity (L)	84	84	84
	Towing Capacity (kg)	0	0	0
BODY	Body Construction	Monocoque	Monocoque	Monocoque
	Body Type	4-door Sedan	4-door Sedan	4-door Sedan
ENGINE	Engine Type	Petrol	Petrol	Petrol/Electric
	Engine Capacity (cc)	4608	4608	4969
	Engine Code Name	1UR-FSE	1UR-FSE	2UR-FSE
	Engine Description	V8	V8	V8
ELECTRIC MOTORS (MG1, MG2)	Type	–	–	Permanent Magnet, Synchronous Motor
	Maximum System Voltage (V)	–	–	650
POWER AND TORQUE	Maximum Power (Petrol)	285kW @ 6400rpm	285kW @ 6400rpm	290kW @ 6400rpm
	Maximum Power (Combined) Hybrid	–	–	327kW
	Maximum Torque (Petrol)	493Nm @ 4100rpm	493Nm @ 4100rpm	520Nm @ 4000rpm
	Maximum Torque (Electric)	–	–	300Nm
	Fuel Economy (Combined, L/100km) <sup>(15)</sup>	11.1	11.1	8.6
	Carbon Dioxide (g/km)	249	249	199
HIGH VOLTAGE BATTERY	Type	–	–	Nickel-Metal Hydride (Ni-MH)
	Nominal Voltage (V)	N/A	N/A	288
DRIVETRAIN	Layout	Longitudinal, Rear Wheel Drive	Longitudinal, Rear Wheel Drive	Longitudinal, All Wheel Drive
	Transmission	8-speed Sports Programmed Direct Shift (SPDS) with Paddle Shift	8-speed Sports Programmed Direct Shift (SPDS) with Sequential Shift	Continuously Variable Transmission (CVT) with 8 Pre-programmed Steps with Paddle Shift
STEERING	Steering Operation	Rack and Pinion Electric Power Steering with Variable Gear Ratio Steering (VGRS)		
	Turning Circle at Kerb (m)	11.8	11.8	12.2
BRAKES	Increased Front Brake Size	•	–	•
	Front Brakes	6-piston Brembo with Ventilated Discs	Ventilated Discs	6-piston Brembo with Ventilated Discs
	Rear Brakes	Ventilated Discs	Ventilated Discs	Ventilated Discs
	Anti-lock Brakes (ABS)	•	•	•
SUSPENSION	Front Suspension	Independent Double Wishbone with Upper and Lower Double Ball Joints		
	Rear Suspension	Multi-link Independent	Multi-link Independent	Multi-link Independent
	Active Stabiliser Bars	–	–	•
TYRES AND RIMS	Front/Rear Tyre Size	245/45R20	245/45R19	245/45R21
	Front/Rear Rim Size	19" x 8"	19" x 8"	19" x 8"
	19" 7 Twin-spoke Hollow Chamber Alloy Wheels	•	Standard	•
	19" 15-spoke Alloy Wheels	•	Optional	•
	19" 10 Twin-spoke BBS F Sport Alloy Wheels	•	•	•
	Full Size Spare Wheel	•	•	•

# LS ADVANCED FEATURES

	LS 460 F Sport	LS 460 Sports Luxury	LS 600h F Sport
Vehicle Dynamics Integrated Management (VDIM) incorporating Vehicle Stability Control, Traction Control, Anti-skid Braking System, Brake Assist, Electronic Brake-force Distribution	•	•	•
Advanced Pre-Collision Safety System (A-PCS) <sup>(6)</sup>	•	•	•
Driver Fatigue Monitor (Eye and Face Detection) <sup>(7)</sup>	•	•	•
Adaptive Variable Suspension (AVS) with Automatic Height Control	•	•	•
Blind Spot Monitor (BSM) <sup>(11)</sup> with Rear Cross Traffic Alert (RCTA)	•	•	•
Rear View Camera (RVC) <sup>(11)</sup> with Rear Guide Assist (RGA) <sup>(11)</sup> and 10 Sonar Parking Sensors	•	•	•
8 Supplemental Restraint System (SRS) Airbags	•	–	•
10 Supplemental Restraint System (SRS) Airbags	–	•	–
All-Speed Active Cruise Control (ACC) <sup>(4)</sup>	•	•	•
Emergency Flashing Brake Lights	•	•	•
Brake Hold Function	•	•	•
Electric Park Brake (EPB)	•	•	•
Anti-theft Alarm	•	•	•
Lexus Remote Touch Controller (LRT)	•	•	•
5-mode Drive Mode Select	•	•	•
Adaptive Front-lighting System (AFS)	•	•	•
LED Daytime Running Lights (DRL)	•	•	•
LED Front Fog Lights	•	•	•
High Intensity Discharge (HID) Low Beam Headlights	•	•	–
LED Headlights	•	•	•
Adaptive High Beam (AHB) <sup>(1)</sup>	•	•	•
Smart Entry (4-door)/Smart Key Card/Push Button Start	•	•	•
Driver and Front Passenger 3 Seat Position Memories	•	•	•
Driver's Easy Entry Slide-away Seat with Tilt-away Steering Column	•	•	•
Soft Close Doors	•	•	•
Heated/Ventilated Front Seats	•	•	•
Front Passenger Ottoman	–	•	–
Rear Outer Seat Heating	•	•	•
Blu-ray™ Rear Seat Entertainment System (RSE)	–	•	–
Rear Outer Seat Electric Adjustable Position Memory	–	•	–
Rear Outer Seat Relaxation System with Massage Pressure and Vibrating Functions	–	•	–
Rear Outer Seat Power and Butterfly Headrests	–	•	–
Electric Rear Sunshade	•	•	•
Electric Rear Side Sunshade	–	•	–
Semi-aniline Perforated Leather Accented Interior	–	•	–
Perforated Leather Accented Interior	•	–	•
Rear Armrest with Air Conditioning and Audio Controls	–	•	–
Woodgrain-look Interior	–	•	–
Woodgrain-look Steering Wheel	–	•	–
Enform Functionality <sup>(16)</sup>	•	•	•
Heated Steering Wheel	•	•	•
Hard Disc Drive (HDD) Satellite Navigation System <sup>(3)</sup>	•	•	•
Advanced Bluetooth® Compatibility <sup>(6)</sup>	•	•	•
Digital Radio (DAB+) <sup>(9)</sup>	•	•	•
19-speaker Mark Levinson Audio with USB Connection <sup>(18)</sup> and Voice Control	•	•	•
Quad-zone Climate Control Air Conditioning with Climate Concierge	–	•	–
Dual-zone Climate Control Air Conditioning	•	–	•
Nanoe™ Technology	•	•	•
Electronic Folding Side Mirrors with Heater	•	•	•
Self-dimming Interior and Exterior Mirrors	•	•	•
Rain Sensing Wipers	•	•	•
TFT LCD Multi Information Display (MID)	•	•	•
12.3" Multimedia LCD Screen	•	•	•
LED Analogue Clock	•	•	•
F Sport Mesh Grille, Sports Pedals and Front Bucket Seats	•	–	•
F Sport Front and Rear Bumper, Badging, Shift Lever and Scuff Plates	•	–	•
IS F-style Rear LSD	•	–	–
Aluminium-look Trim	•	–	•
Ski Port	•	–	–
Power Boot Lid	•	•	•
Moonroof	•	•	•





# OWNERSHIP SOLUTIONS

OWNERSHIP SOLUTIONS ALLOWS YOU TO DETERMINE YOUR FINANCE COSTS AND KNOW THE GUARANTEED FUTURE VALUE (GFV)\* OF YOUR VEHICLE FROM THE OUTSET. IT OFFERS YOU CHOICE, CONTROL AND CERTAINTY. IN SHORT, EVERYTHING YOU'D EXPECT FROM LEXUS.

## How does Ownership Solutions work?

- You choose the deposit that best fits your needs.
- You choose your term.\*\*
- We agree on the estimated kilometres you think the vehicle will have travelled at the end of the term (the End Odometer). The End Odometer will also include any kilometres already on the vehicle.
- Lexus Financial Services (LFS) then determines the GFV of your vehicle and calculates your monthly repayments with a final payment equal to the GFV. The GFV is the minimum value of your Lexus at the end of your finance contract. So, if you return your Lexus at the end of the term and satisfy the agreed terms and conditions, LFS will pay you the GFV which will be put against the final payment (subject to fair wear and tear conditions and agreed kilometres being met).

## The end of the term? Simply replace, retain or return.

At the end of your term you can choose to:

- Replace or sell your Lexus using the trade-in value or sale price to pay the remaining balance of your account.
- Retain your Lexus and simply pay the remaining balance of your account (including final payment).
- Alternatively, return your Lexus and, subject to fair wear and tear conditions and the agreed kilometres being met, we'll put the GFV towards the final payment on your account.

## Choosing your deposit – what is best for you?

With the flexibility of Ownership Solutions, you can choose the deposit that best fits your current needs.

- If, for example, you have funds tied up in other investments, you can choose to finance your new Lexus with a zero deposit.†
- Alternatively, by using a larger deposit you can lower your monthly repayments.
- Better still, compared to other finance options over a similar term, Ownership Solutions can provide lower monthly repayments.\*\*\*

## Want more certainty?

With Ownership Solutions you've got the reassurance that at the end of the term (subject to fair wear and tear and agreed kilometres being met) you'll never owe more than your vehicle's worth to LFS. In other words, you don't have to worry about what your vehicle will be worth in the future because you know its minimum value from the outset.†

## What happens in the case of the unexpected?

If your vehicle incurs damage and does not meet the Fair Wear and Tear guidelines, LFS will give you the opportunity to have your vehicle repaired. Otherwise, LFS can organise the repairs and deduct the cost from your GFV. This adjusted GFV will then be the price that LFS will offer you if you return the vehicle at the end of your term. Of course, if you retain the vehicle, the condition doesn't matter, however, if you replace it or sell it privately the condition will obviously impact your sale price.

## So what does your accountant think?

Naturally, we think Ownership Solutions is an excellent, innovative way to put you in control of buying a new Lexus. That said, we suggest you seek independent advice to ensure Ownership Solutions is right for you.

## Wouldn't it be great if Ownership Solutions was just the beginning?

Lexus' innovations and commitment to customer service extend well beyond Ownership Solutions. Once you purchase a new Lexus, you'll become a member of the Lexus Encore Privileges programme and enjoy a host of exclusive benefits.‡

For further details simply visit your nearest Lexus dealer or see [lexus.com.au/services/benefits](http://lexus.com.au/services/benefits)

\* Guaranteed Future Value (GFV) is the minimum value of your new or approved demonstrator Lexus at the end of your finance contract, as determined by Lexus Financial Services (LFS). If you decide to return your car to Lexus at the end of your term, LFS will pay you the agreed GFV which will be put against your final payment, subject to fair wear and tear conditions and agreed kilometres being met. The information provided is general in nature. You should seek your own financial advice to determine whether Lexus Ownership Solutions is appropriate for your individual circumstances. Terms, conditions, fees and charges apply. Lexus Ownership Solutions GFV products are available to approved customers of Lexus Financial Services, a division of Toyota Finance Australia Limited ABN 48 002 435 181, AFSL and Australian Credit Licence 392536.

\*\* Up to four years.

\*\*\* Lower monthly repayments compared to similar term with no Guaranteed Future Value (GFV) or equivalent balloon final payment. Total interest charges will be higher if a GFV or balloon final payment is selected.

† Approved applicants only, terms conditions, fees and charges apply.





# THE BENEFITS OF ENCORE

---

THE BENEFITS OF BEING A LEXUS OWNER GO FAR BEYOND THE INTRINSIC PLEASURE OF DRIVING THE VEHICLE. FROM THE MOMENT YOU'RE HANDED THE KEYS, YOU'LL ALSO BE WELCOMED TO THE LEXUS ENCORE PRIVILEGES PROGRAMME† - A RANGE OF EXCLUSIVE INITIATIVES THAT REAFFIRM OUR ONGOING PURSUIT OF PERFECTION.

---

It all means you'll enter a world of benefits that extends to every corner of life. A world where everything's just that much easier and works that much more seamlessly. And a world where, should trouble ever find you, you can always find a helping hand.

Take our After Sales Service as an example. Both our technology and our technicians are at the forefront of automotive innovation. And our profound understanding of every single component of your Lexus means we can do more to ensure it's a pleasure to drive today, and in the long run.

It's a world you've always belonged in. A privilege unique to Lexus drivers.

## **The service experience**

Every aspect of your Lexus is built around your comfort, convenience and driving pleasure. So it's fitting that when it's booked in for routine maintenance we'll provide you with a complimentary loan car or we'll pick your vehicle up and deliver it back to your home or office. We'll also provide a complimentary wash and interior vacuum while your vehicle is with us.

## **Experience Lexus outside your vehicle**

We're constantly striving to enhance the Lexus ownership experience. It's what we're known for. Our exclusive luxury events will be the perfect way to experience the Lexus lifestyle and network with other owners.

## **Peace of mind**

Wherever you are and whatever you're doing, you can relax, because with our Encore Privileges programme, you'll have the 24-hour support of Lexus Drive Care. We'll look after your car but, just as importantly, we'll look after you and your passengers.

## **Well read**

You can stay abreast of all things Lexus from the comfort of your own home, with our Beyond By Lexus Magazine delivered right to your door. It'll keep you updated on all aspects of luxury living and covers everything you need to know about the cars that are leading the world.

See [lexus.com.au/services/benefits](https://lexus.com.au/services/benefits) for details.

---

†Terms and Conditions apply.

New Vehicle Warranty expires four years from date of first delivery or 100,000 kms, whichever occurs first. Refer to the warranty conditions. The New Vehicle Warranty does not limit and may not necessarily exceed your rights under the Competition and Consumer Act 2010.

Lexus Australia provides HV (Hybrid) Battery Warranty of eight years/160,000 kilometres (whichever occurs first), reinforcing the incredible reliability of the hybrid battery. Utilising advanced technology, the battery works seamlessly within the hybrid system, offering peace of mind to the driver of assured performance every time. The Warranty does not limit and may not necessarily exceed your rights under the Competition and Consumer Act 2010.

- (1) Adaptive High Beam is a driver assist device only and should not be used as a substitute for safe driving practices.
- (2) Fuel consumption and emissions vary depending on driving conditions/style, vehicle conditions and options/accessories.
- (3) Current navigation mapping database encompasses major capital and primary national road networks, as well as offering some coverage in regional areas.
- (4) Active Cruise Control (ACC) is a driver assist technology and should not be used as a substitute for safe driving practices. Driver should continue to monitor the road.
- (5) Lane Keeping Assist is a driver assist device only and should not be used as a substitute for safe driving practices. The area into which the vehicle is driven must be visually monitored by the driver.
- (6) The Bluetooth® word mark is owned by The Bluetooth SIG, Inc. Not all devices will be compatible and functionality will vary depending on the device.
- (7) Driver Fatigue Monitor is a driver assist device only and should not be used as a substitute for safe driving practices. The area into which the vehicle is driven must be visually monitored by the driver.
- (8) Advanced Pre-Collision Safety System (A-PCS) and Brake Assist are driver assist technologies and should not be used in place of safe driving practices. Driver should continue to monitor road ahead.
- (9) Digital radio station coverage dependent on vehicle location.
- (10) Lane Departure Warning (LDW) is a driver assist device only and should not be used as a substitute for safe driving practices. The area into which the vehicle is driven must be visually monitored by the driver.
- (11) Reversing Camera/Blind Spot Monitor (BSM)/Rear Cross Traffic Alert (RCTA) is designed as a driver assist device only and should not be used as a substitute for skilled driving (and/or safe parking practices). The area into which the vehicle is to be driven must be visually monitored by the driver.
- (12) Some vehicle dimension figures are approximate and may vary due to options and accessory fitment.
- (13) Kerb, tare and payload weights are nominal and will vary depending on options and accessories.
- (14) Gross Vehicle Mass (GVM) is the total permissible combined weight of the vehicle, including occupants, fuel and cargo.
- (15) Fuel consumption will vary depending on driving conditions/style, vehicle conditions and options/accessories. Source of fuel consumption data: [ADR81/02 combined cycle (L/100km) for auto models].
- (16) Enform services rely on data from the driver's compatible mobile phone and information provided by third parties. Availability is dependent on a number of factors, including the availability of third-party information, mobile service, sufficient mobile data allowance and GPS satellite signal reception. Mobile usage is at the user's cost. Lexus Australia reserves the right to add, remove or modify applications. Further information is provided at [lexus.com.au/enform](http://lexus.com.au/enform)
- (17) Self-restoring paint contains an outer coating with elastic qualities capable of restoring superficial scratches only.
- (18) Not all devices will be compatible. Functionality varies depending on device.

\*nanoe is a trademark of Panasonic Corporation

**IMPORTANT NOTICE – please read:** Lexus Australia uses its best endeavours to ensure this material is correct when published. You must check with your authorised Lexus dealer when ordering to ensure the vehicle with your chosen specifications, equipment and colour is available and that the vehicle can be delivered within the timeframe suitable to you. When ordering accessories, you must check with your authorised Lexus dealer to ensure the accessory's design, features and colours are available and will fit your vehicle. Please also consider the mass of your load to ensure you will not exceed the maximum allowable individual axle capacity, Gross Vehicle Mass and/or Gross Combined Mass of the vehicle. Refer to [lexus.com.au](http://lexus.com.au) for further details. Colours displayed here are a guide only and may vary from actual colours due to printing/display processes. Certain accessories when fitted will require the removal of standard equipment. Standard equipment may be retained by Lexus Australia. Lexus Australia reserves the right to change, without notice, at any time, prices, colours, materials, equipment, specifications and discontinue colours/models. To the extent permitted by law, Lexus Australia will not be liable for any damage, loss or expense incurred as a result of reliance on this material in any way. Distributed nationally by Lexus Australia ABN 64 009 686 097, 155 Bertie St, Port Melbourne Vic 3207. VALID: L3163-3. PRINTED: DECEMBER 2014. LEX0079



### THIS BOOK IS PRINTED ON GREEN PAPER

The Lexus book you are reading has been produced using HannoArt Satin. A premium coated paper representing a level of craftsmanship that is without peer. This environmentally responsible paper is manufactured using low environmental impact FSC® certified pulp and is certified carbon neutral by The Carbon Reduction Institute. ^ Sappi, the manufacturers of HannoArt, place high importance on delivering an environmental and sustainable operation. They operate under world's best practice ISO 14001 EMS and EMAS certification and eliminate harmful by-products by using Totally Chlorine Free (TCF) pulp. HannoArt is archival, so like our vehicles it's made to stand the test of time.

As a company that strives to lessen its impact on the environment in every way possible, Lexus believes that choosing our paper wisely is one more step we can take in preserving our planet.

^Calculations encompass carbon emissions from seedling to printer. For full details please visit [www.kwdoggett.com.au](http://www.kwdoggett.com.au)

To learn more about the LS Line contact your Lexus Dealer on 1800 023 009 or visit [lexus.com.au](http://lexus.com.au)



