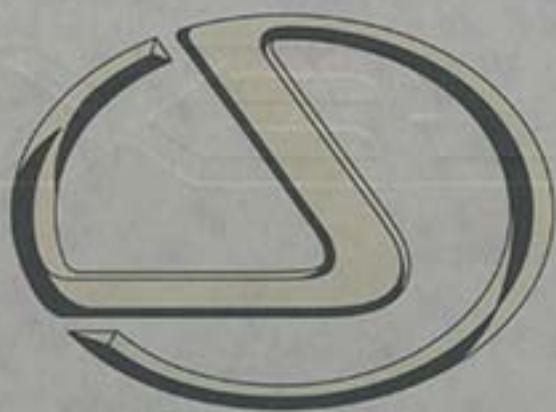




L S 4 0 0



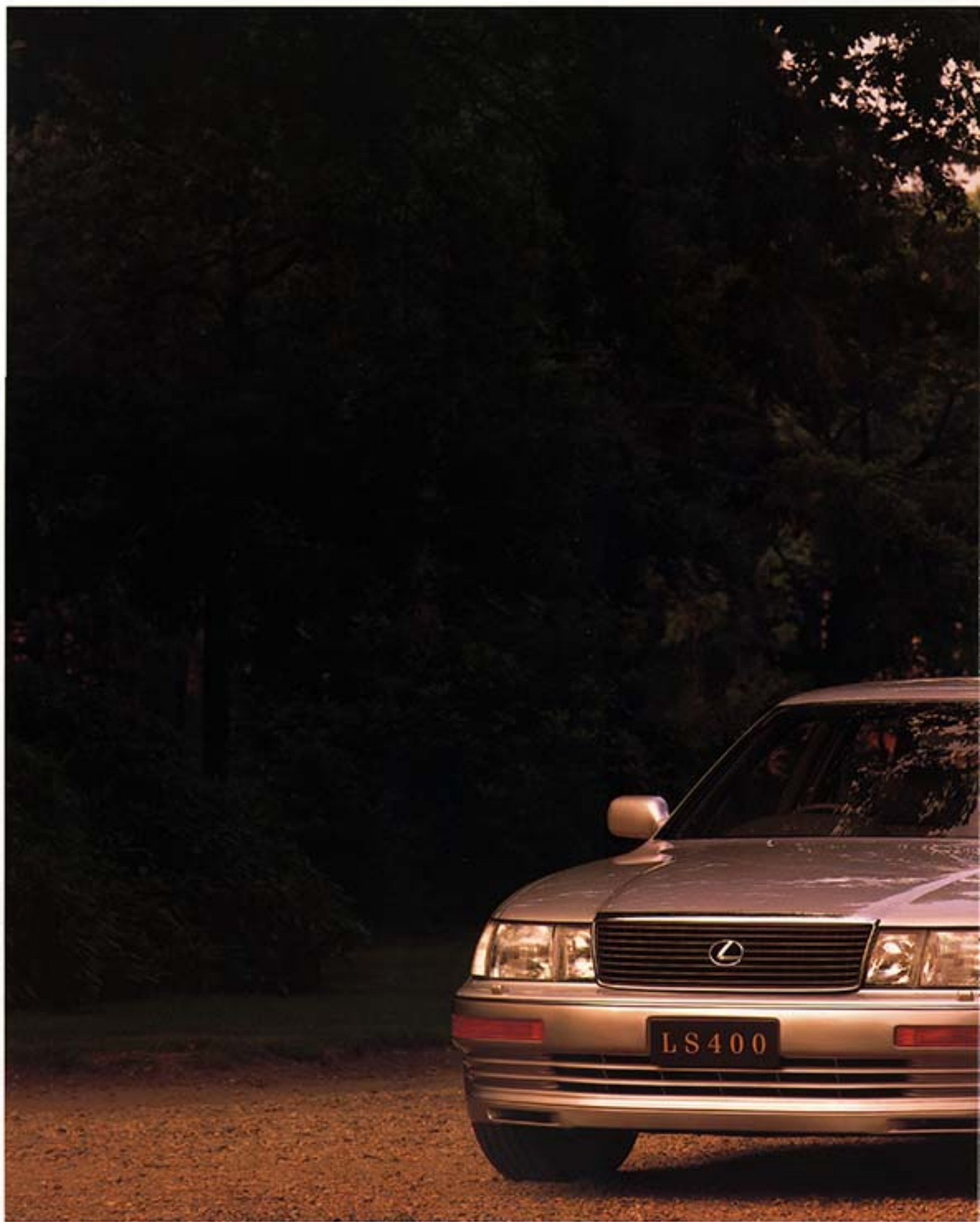
**T**wo years have passed since the Lexus name established itself as the new standard among luxury automobiles, seemingly overnight. But in reality, it is now almost nine years since Toyota set itself the monumental goal of creating the world's finest performance saloon. A car that would exceed the multi-faceted performance abilities and qualities demanded of today's automobiles by reconciling such apparent contradictions as high performance with fuel efficiency and low emissions, and sumptuous luxury with enhanced safety. The act of creation of the Lexus LS400 required total commitment from 1400 of Toyota's most skilled engineers, and 2300 technicians who brought the



dreams to life. And the commitment of time to develop the best, rethink, refine and continuously perfect a system, component or process until it was right for Lexus. After this extensive development, over 450 prototypes were made, millions of test miles driven and a long list of innovative patents applied for. Finally, to reach the higher quality standards demanded by Lexus, new production techniques and test facilities were established. So it is quite natural that after nearly nine years the Lexus name has become the standard for luxury performance. Because the goal set for Lexus was to create the world's finest automobiles and most satisfied owners.





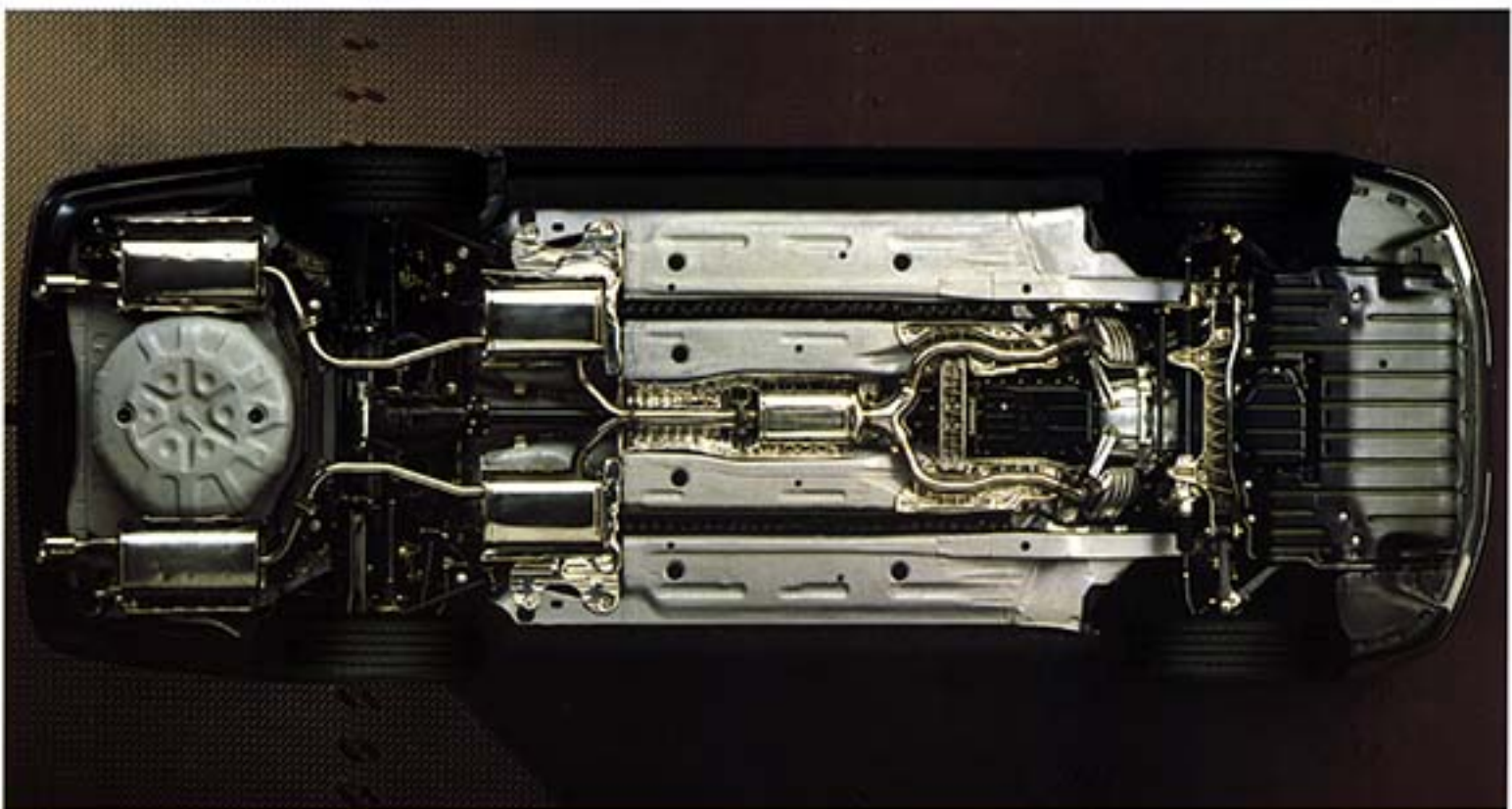








**The LS400's distinctive styling bespeaks refinement and luxury.** Closer inspection reveals the precision of the adjoining lines of bonnet and fenders, the exacting alignment of all body panels, window glass and components with their promise of quality and aerodynamic excellence. For today's automotive design relies on aerodynamics to obtain maximum performance from minimum energy input for good reason. At highway speeds aerodynamic drag accounts for half the energy required to propel a car. In order for the total aerodynamic management to be effective, Lexus started from the bottom up. The entire underside was designed for maximum aerodynamic efficiency: a flat engine cover, fairings in front of the



*Left hand drive model illustrated.*

tyres and mufflers and airfoil-shaped lower suspension arms. Flush-mounted body panels, door handles and light lenses all contribute to a smoother body surface. Each angle of the entire body was scrutinised through the use of computer simulation to determine the optimum shape, which created the minimum of turbulence. The result of this obsessive attention is an outstanding drag coefficient of 0.30, low enough to embarrass the majority of sports cars, as well as exceptional coefficients of lift and yawing for greater stability.

Integrated into the simple elegance of the LS400 is a keen sense of practicality. The doors cut deeply into the body for easier entry and exit. The boot lid opens up from the bumper level for convenient access.

The unique design of the lower door and rocker panels helps prevent the pants-leg from being scuffed.

All this talk of design detail delights the mind. A closer look at the meticulously crafted cabin interior will do equal wonders for the eyes and emotions. The ultimate in interior luxury resulted from an exhaustive search for the right materials. It took two years before Lexus designers finally chose California walnut for its colour, finish and durability for the interior trim. The deep, lustrous finish was imparted by Yamaha, a company renowned for its exquisitely crafted grand pianos. Similarly, they inspected hides and tanning methods worldwide until they found a beautifully grained, soft American leather for the leather seating.



*The aerodynamic properties of the LS400's precisely aligned bonnet and guards and flush-mounted light lenses are immediately obvious.*

*Stay-young treatment includes a multi-process paint finish comprising a cathodic primer, base and top colour layers, and double clear coats for some mica colours.*

*Underbody wind fairings in front of the suspension and mufflers manage the air flow, reducing resistance that would otherwise affect performance.*

*It took Lexus designers two years to examine and finally select the California walnut from 24 types of wood for colour and grain, finish and durability.*

*To optimise high speed stability, each corner and edge is rounded to cheat the wind and improve the lift and yawing coefficients.*

*The subtle changes in the maturing of the new Lexus include details that you may not notice, like the reshaping of the gear shift knob.*

To ensure the satisfaction of owning a Lexus is lasting, longevity was a crucial engineering criteria. Early in development, nearly one hundred critical areas, including colour fading, wear, corrosion and age-related noise were carefully examined. Extensive use of galvanized and excellite steel sheeting with an extra layer of zinc-iron alloy for the body panels, enhances paint adhesion as well as corrosion resistance. The paint itself was specially formulated to improve resistance to fading by sunlight, heat under the sun and cold in the night. Finally, in a multi-step process system, electrodeposit primer and thick colour layers are applied. Some mica colours even include two durable clear coats.

**Simple yet convincing.** Open up the bonnet of the LS400 and you'll discover a simple, clean engine compartment. The engine and all components, hoses and wires are precisely routed and beautifully aligned either laterally or longitudinally. This simplicity of layout conceals the complexity of highly advanced engine technology and electronics, engineered to fulfill a host of opposing requirements demanded by drivers and the environment. Traditional wisdom teaches us that horsepower and fuel economy are diametrically opposed. But Lexus resolved this seeming paradox by innovation, not compromise. It boasts a power rating in the top level in its class, together with outstanding fuel efficiency that surpasses many

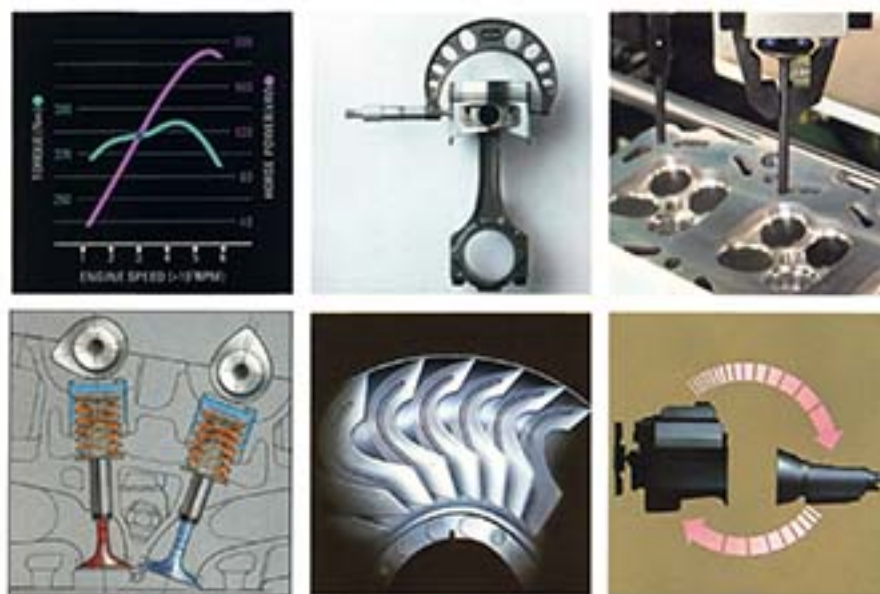


less powerful cars. The LS400's 4.0-litre Four-Cam, 32-Valve V8 engine generates a formidable 190kW output. Yet its fuel consumption is just 9\* litres/100km (highway mode).

The key to the LS400's outstanding performance is an enlarged valve area with two intake and two exhaust valves per cylinder, which takes in more air/fuel mixture, carries out combustion more efficiently, and exhausts gas more completely. Compact, pentroof-shaped combustion chambers with a centrally-located spark plug aid effective fuel combustion, enabling a 10:1 compression ratio. The results are impressive power and efficiency and less emissions. Yet this extra performance has been extracted

without the penalty of extra weight. The cylinder block was cast from high-silicone aluminium alloy for its excellent heat dispersal properties, as well as to save weight.

Technical data reveals an engine that provides 360Nm torque at 4400rpm and can produce 90% of this torque between 2000rpm and peak power at 5600rpm. This flexible and efficient performance is achieved by a sophisticated engine management system. It constantly analyses sensory data including engine rpm, vehicle speed, intake air pressure, throttle valve angle, presence of engine knock and oxygen content in the exhaust gas. It then acts accordingly, adjusting the fuel injected into each cylinder, firing



*Technical graph highlights the excellence of the LS400's V8 engine. It produces 90% of usable torque between 2000rpm and peak power of 5600rpm.*

*The use of a narrow valve angle enabled a compact cylinder design, which gives a more complete burn.*

*Precisely manufactured pistons incorporate a weight-adjusting boss for weight imbalance and a strut to minimise thermal expansion.*

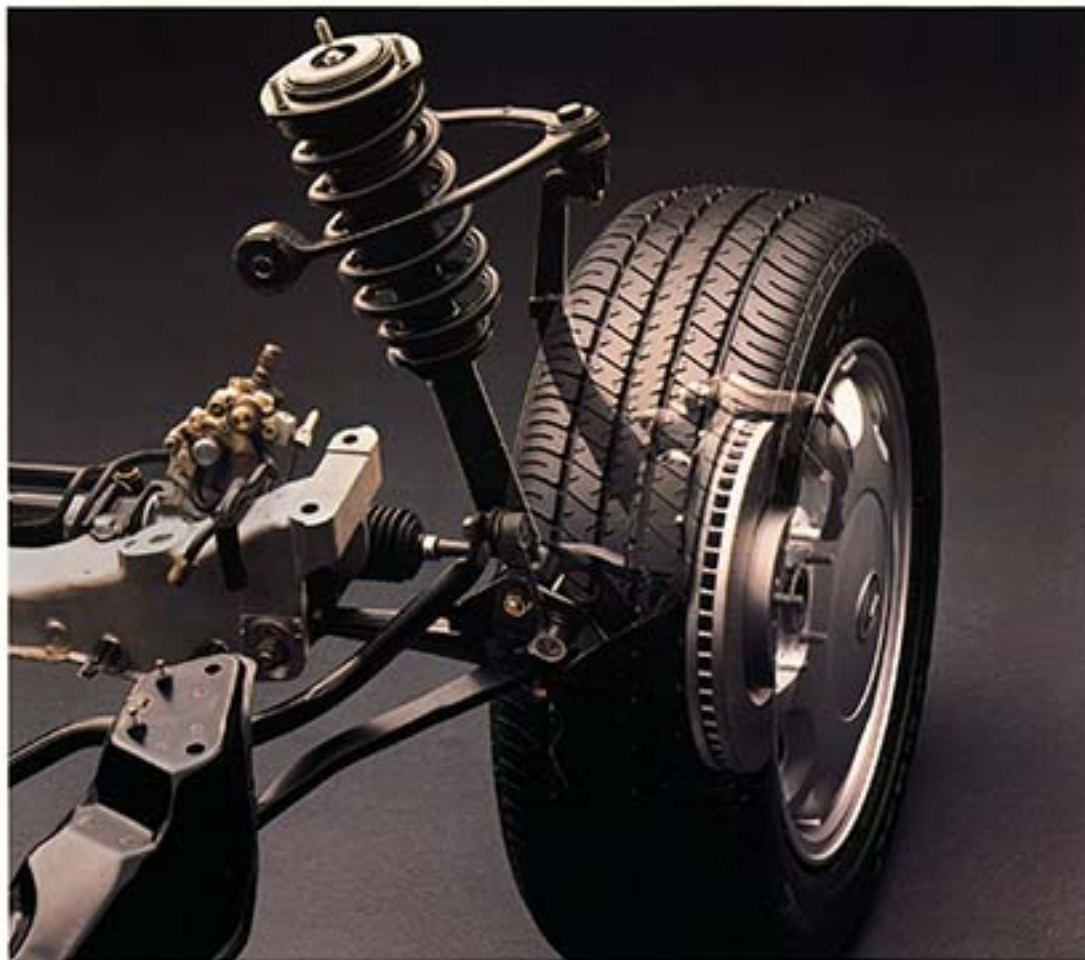
*The impeller of the torque converter is an impressive demonstration of fluid hydraulics, improving performance, fuel efficiency and even riding comfort.*

*Lightweight aluminium cylinder heads reveal four large valve areas per cylinder for extremely efficient air intake and gas exhaust.*

*The biggest contributor to the LS400's outstandingly smooth transmission, is the sharing of information between engine and transmission computers.*

the spark plugs at the optimum moment, regulating idle speed and managing emission control. This precision management of power extends to the computer-controlled transmission, which shares information with the engine management computer. As it is about to shift, the engine briefly reduces its output by retarding ignition timing for a split second, and signals the transmission that it is ready to shift. This minimises the shock and ensures every gear shift in the electronically-controlled automatic transmission is imperceptibly smooth. The LS400's torque converter also received special attention. Intensive computer design created a unique configuration that enhances the already excellent fuel economy and acceleration.

**The maturing of the Lexus spirit.** A vehicle's handling, stability and riding comfort are determined not only by the suspension. A body shell that creates a sound foundation for the suspension is also a critical factor in determining its performance characteristics. So it should come as little surprise that Lexus chassis engineers continued to evaluate and refine the chassis until they were completely satisfied that it showed superior resistance to bending and torsional flexing. They employed Finite Element Analysis computer simulation techniques to examine the body structure and determine the most effective reinforcement, with the minimum of additional weight.



*Left hand drive model illustrated.*

On this foundation they built a suspension that resolves the dichotomy of combining high performance with luxury ride. Lexus utilises double wishbones on all four wheels. A suspension format that is highly prized in grand prix racing cars because it keeps the tyres perpendicular to the ground over bumps and during cornering manoeuvres. Particular attention was paid to the geometry of the suspension system, with an anti-dive and -squat layout that ensures stability during severe braking and acceleration.

To ensure a luxuriously comfortable ride, the suspension struts were continuously fine tuned until the optimum settings for the spring rate and damping force, that combine handling stability with riding

comfort, were arrived at. Bushings on both the front and rear suspension units use pillow ball joints to give a more natural, predictable ride. To cushion road shock even more effectively, fluid-filled bushings were employed on the front strut bars.

Three years on the world's roads have given the LS400 a wealth of experience. Fine tuning and refinement of the suspension system continues, just as the spirit of Lexus itself is maturing. In fact Lexus is specifically tuned to each area of the world it is driven in, to ensure the best possible ride in varying driving conditions between, and sometimes within, countries. With new 16-inch wheels and 225/60ZR tyres on



*Air suspension not available in Australian market.*



*To reduce noise and vibration, every element of the drivetrain from the engine crankshaft to the two-piece driveshaft is arranged in a straight line.*

*Double wishbone suspension maximises straight-line stability and keeps the tyres perpendicular to the ground, especially during demanding cornering manoeuvres.*

*An obvious change is the 225/60ZR 16" tyres and aluminium alloy disc wheels, which enhance cornering stability as well as appearance.*

*Particular attention was paid to refining the suspension geometry to eliminate the excess of squat and dive normally experienced during hard acceleration and braking.*

*Finite Element Analysis computer simulation was used to determine the optimum body shell, that combined strength and rigidity without adding weight.*

*The suspension geometry and stabiliser bars endow the LS400 with natural handling that enhances stability in high speed cornering.*

the new model, the process of refining spring rates and damping forces carries on.

The exceptional smoothness you experience when you first drive the LS400 has garnered it high praise indeed. But then this smoothness is no coincidence. Lexus designers eliminated annoying vibrations at the source, rather than try and apply remedies to the symptoms. Every element of the drivetrain, from the engine's crankshaft to the main transmission shaft to the two-piece driveshaft is arranged in a straight line. To ensure precise assembly tolerances, the differential gear of every LS400 is examined by an optical inspection system which uses a TV camera to scan the mating of the gear teeth.





**With Lexus Safety presumes exacting new standards to ensure your total peace of mind.**

The prime concern in designing superior safety in an automobile is the people inside. The egg is one paragon of an ideal protective structure. It safeguards the soft core by absorbing impact energy. While strength and rigidity are important factors in creating a safe structural shell, if it is too rigid, impact energy could pass directly to the cabin interior. To counter this, Lexus engineers designed the front and rear sections of the LS400's body as crumple zones which collapse gradually during a collision, absorbing and dissipating the energy, to cushion the cabin.

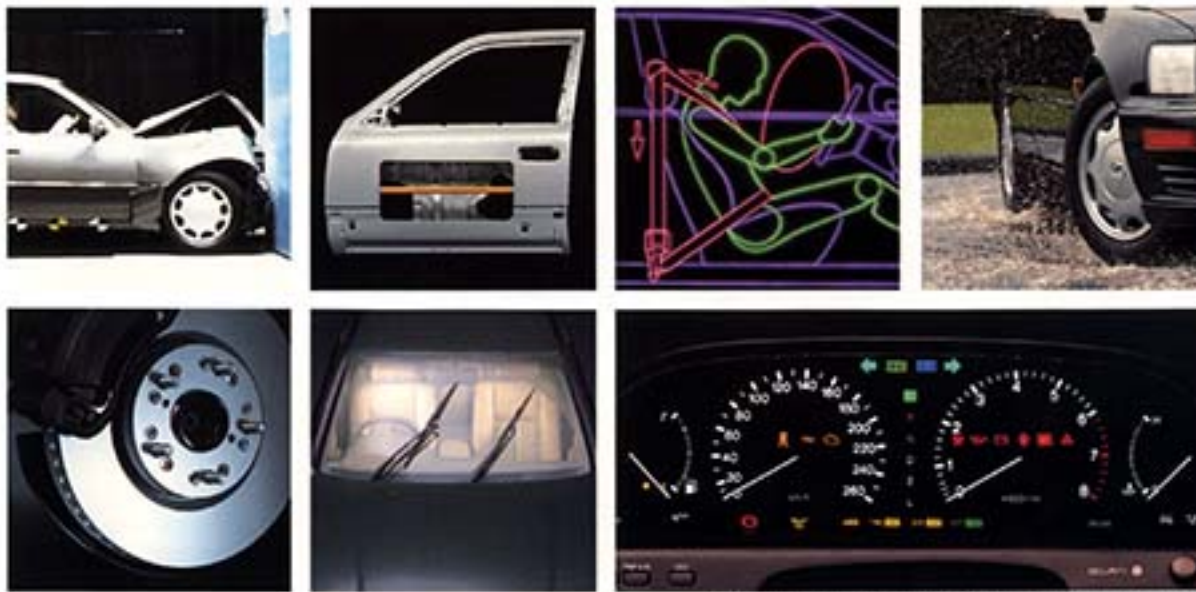


In a moderate frontal collision, primary crash protection is provided by three-point anchored seatbelts. In the event of a severe enough accident, both the driver's and passenger's side Supplemental Restraint System (SRS) airbags are put into work. Also the front driver and passenger seat belt pre-tensioner mechanisms immediately tighten the seatbelts. The LS400's SRS airbags and pre-tensioner belt mechanisms are designed to activate only when any one of three crash sensors and a fail-safing sensor simultaneously send signals.

Superior driver control is the major factor ensuring the car is operated safely and securely. The LS400 is equipped with an innovative four-sensor, three-channel Anti-skid Braking system (ABS). During panic

stops or accidental over-application of the brakes in slippery conditions, ABS helps prevent the wheels from locking up by controlling the brake fluid pressure. Making sure the driver retains control and is able to manoeuvre around potential crashes. The LS400 ABS system has been extensively tested in Australia and has an Australian calibration to handle our unique unsealed road conditions. The LS400 also has an optional traction control system which prevents the rear wheels spinning on a loose or slippery surface.

The flawless upholstery hides the sophisticated ergonomics incorporated into the LS400's seats. To ensure hours of supportive driving comfort, computers assisted in the choice of different firmness of seat padding and positioning of six pre-tensioned coil springs in the front seat cushions. This provides people with different physiques with the same level of cushioning, thanks to their linear yielding characteristics.



*European model RHD instrumentation illustrated.*

*A series of stringent tests helped the Lexus designers study effects of accidents, evaluating body structure and enabling optimum reinforcements, which include impact beams.*

*The newly enlarged ventilated disc brakes give safe sure stops, with unfading performance even during constant, prolonged use in winding, downhill driving.*

*The SRS (Supplemental Restraint System) airbags and three-point pre-tensioner front seatbelts combine to provide optimal protection in the event of a frontal collision.*

*The LS400's unique windscreen wiping system is speed sensitive to compensate for the increased air drag encountered at high speeds.*

*Not all ABS brakes are created equal. Lexus employs a system with four sensors and three channels that react to the different levels of traction.*

*Self-illuminating analogue instrumentation provides all vital information at a glance. Its soft, easy-to-read glow helps reduce eye fatigue when driving at night.*

The driving position demonstrates the same thoughtful application of ergonomics. Every control and switch is logically placed within an arc of the driver's partially extended arm. A comprehensive auto-adjustment system allows the tailoring of the driving position exactly to individual requirements. The steering wheel power telescopes and tilts, door mirrors, seatbelt shoulder anchors and seat settings are all power adjustable. The self-illuminating instrumentation is aligned in the driver's sight line, communicating all vital information at a glance. Its soft glow helps reduce eye fatigue. The liquid crystal rearview mirror offers you day and night settings, darkening the mirror for a glare free night image at the touch of a button.









*Fog lamps not available in Australian market.*

**Creating new standards in luxury far beyond the norm of expectation.** No situation highlights the attention paid to creating the world's finest luxury sedan more than cruising down the highway enjoying the conversation with your fellow passengers about the trip ahead, listening to your favourite music. For LS400's cabin designers perceived absolute peace and quiet as great a luxury as the sumptuous leather upholstery. The interior of the LS400 was tackled with the same obsession for detail as the engineering that endowed it with high performance attributes. The obsession with engineering standards led the Lexus designers to the source of the annoyances. The straight-line drivetrain, exact mating of differential



gear teeth, superb balance of the engine design and precise manufacturing tolerances helped eliminate mechanical noise at the source. The differential gear case is attached to the suspension member with rubber insulators, which in turn are fitted to the body on rubber mounts. The suspension strut upper supports and one of the engine mounts are liquid-filled to reduce transmission of vibration and noise. The superb aerodynamics of the flush fitted glass and panels leave no protuberances to catch the wind.

The interior itself is blanketed in sound-insulation. Multi-layer composite flooring of plastic, asphalt and urethane foam which underlays the rich thick carpeting absorbs road noise. Every possible hollow

in the structural shell has been injected with sound-absorbing foam and key elements of this shell incorporate weldable anti-vibration steel, which is unique to Lexus. With absolute tranquility assured, the designers turned towards the more conspicuous comforts.

The cabin of the LS400 truly delights the senses. Here, advanced technology has been harnessed in concert with traditional craftsmanship of the highest order, to provide luxurious comfort for five adults. You'll delight in the skills and attention that have been lavished on every last detail. Each element is complemented by perfectly matched or harmoniously contrasted colours and textures. Scientifically designed, ergonomically refined seats are upholstered in sumptuous leather. The seat's computer memory



*Fog lamps not available in Australian market.*

*Seating position is fully adjustable for quick, precise tailoring to individual needs. The steering wheel tilts and telescopes. Both driver's and passenger's seats includes slide and recline, vertical fitting of the seat cushion, headrest adjustments and a lumbar support.*

*A computer sets the personal adjustments for the seat, steering wheel, door mirrors and seatbelt shoulder anchor for two drivers at the touch of a button.*

*Six pre-tensioned coil springs built into the seat cushion ensure people of different weight and physiques enjoy the same supportive ride.*

*Set the cruise control computer on a long journey and you can rest your accelerator foot, confident you won't err above the speed limit.*

*A composite sandwich of plastic, asphalt and foam lines strategic areas to ensure that the cabin is isolated from road noise.*

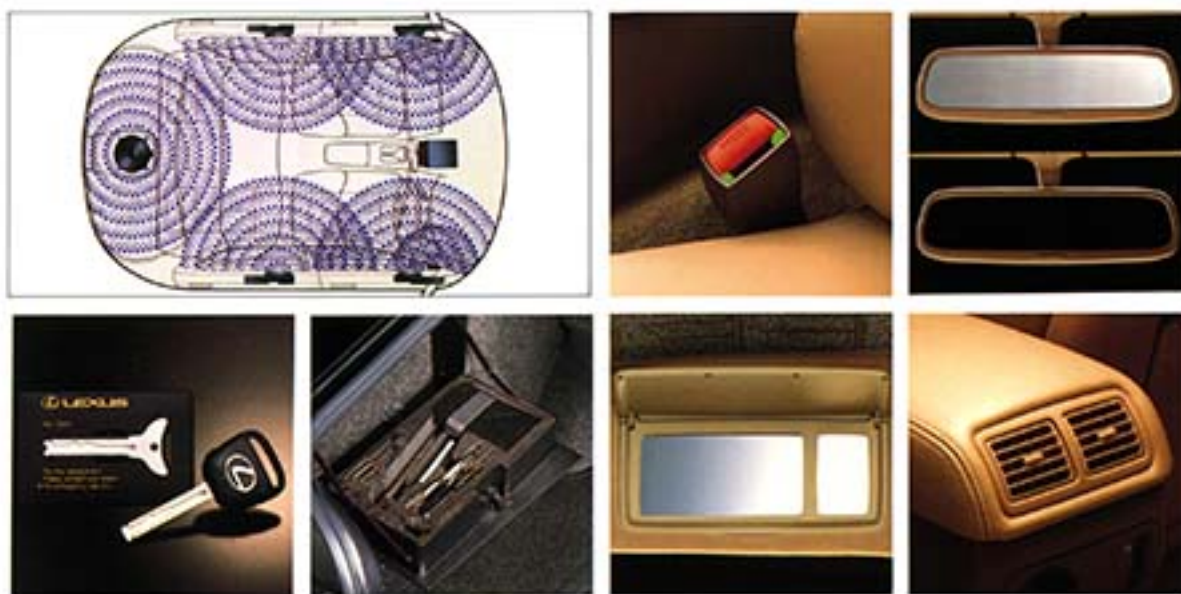
remembers the personal adjustments for you and one other driver. Simply by pressing one of the two reset buttons, it will adjust the seat, steering wheel, door mirrors and seatbelt shoulder anchor to preset positions. An advanced climate control system utilising the latest non-ozone depleting refrigerant (R134a) enhances your comfort. The fast acting automatic heating, ventilation and air conditioning system has immense capacity and a multitude of vents to assure your immediate comfort. Yet it is so quiet it will never disturb the peace. Adjustable ducts enable passengers in the rear seats to regulate the system to their own desires. When the weather is in the right mood, the optional power tilt and slide moonroof can be opened to let you make the most of fine days and nights.



*Instrumentation shown includes Optional Traction Control (TRC).*



**It is the subtlest of touches that puts the final seal on luxury.** The subtle qualities of light and sound highlight the LS400's luxurious ambience. The LS400 provides the perfect environment in which to enjoy your favourite music, and an audio system that ensures the experience will be incomparable. Even discerning audiophiles will be captivated by the high fidelity of the superb sound system. The Lexus AM/FM stereo cassette system features five amplifiers and seven matched component-type speakers: two domed tweeters, four full-range speakers in bass-reflex enclosures mounted in the doors and an 8-inch sub-woofer in the rear package tray. For uninterrupted hours of your favourite music, a compact disc auto-



*The audio system's superb sound is supplied by five amplifiers and seven matched component-type speakers: two domed tweeters, four extended-range speakers in large bass-reflex boxes, and a rear-mounted 8-inch sub-woofer which uses the trunk as an infinite baffle.*

*A convenient new feature is the illuminated seatbelt buckles which are easy to find even when you've just stepped outside at night.*

*The rearview mirror offers you day and night settings, darkening the mirror for a glare free night image at the flip of a lever.*

*A keyless entry system lets you unlock your LS400 and disable the alarm system on your approach.*

*A well-equipped toolbox is situated in its own compartment in the sidewall of the boot, should the occasion ever arise for you to use it.*

*The passenger and drivers seat vanity mirrors are illuminated for perfect vision.*

*Adjustable ducts in the rear seats give precise control of both the intensity and direction of the heating and air conditioning system.*

changer is mounted in the boot in a vibration-damping enclosure. It can hold and lets you select randomly from up to six CDs.

Generous yet soft illumination completes the mood. Interior lighting is provided by an overhead dome lamp, as well as four individual reading lights. Both the driver and front seat passenger's vanity mirrors are illuminated. Courtesy lights in the door add a thoughtful touch when you're entering or alighting.

For security's sake, the LS400 has an advanced theft deterrent system. Should a determined thief finally force entry, the system sounds and flashes a warning and cuts the starter circuit.





**T**hough it took six years to design and develop, and another three years for the Lexus spirit to mature into the subtle developments of the new LS400, this represents only the first part of our commitment to all Lexus owners. Because Lexus aims to make not only the finest performance sedan in the world, but also to maintain the most satisfied owners.

You'll notice this essential difference in all your contact with a Lexus dealership. For Lexus dealers have been carefully chosen for their commitment to your motoring enjoyment. From the stand alone dealerships, courteous receptionists and low-key salespeople to the computerised inventory and keeping of service records that place your car's service history on-line at every Lexus dealership in the country.



*Left hand drive model illustrated.*

*At Lexus showroom you'll be met by knowledgeable salespeople. They are readily available to discuss any matter of concern.*

*Physical conditions of your LS400 are instantly monitored by LS400's self-diagnosis system, helping engineers deal with the trouble.*

*The computerised customer relation service keeps your car's service history and places on order any parts required immediately.*

the Lexus dealership is dedicated to ensuring your complete satisfaction.

Your dealer meticulously inspects and test drives every LS400 before it's delivered to you. Even the first two scheduled service visits are complimentary. They stand by an outstanding warranty coverage, which features a minimum of fine print and extends to 3 years or 100,000 kilometres, as well as an anti corrosion protection for 6 years. In the unlikely event of a problem, Lexus Roadside Assistance Protection is ready to help you 24-hours a day, on a toll-free number. In all likelihood, it's a service you'll never have to use. But it's our way of reaffirming our total commitment to your complete satisfaction, now and in the future.



#### ■ DIMENSIONS

Overall Length

4995mm

Width

1820mm

Height

1425mm

Wheelbase

2815mm

Tread front/rear

1565mm/1555mm

Ground clearance

160mm

Minimum turning radius (kerb to kerb)

5.5m

Fuel tank capacity

85 litres

#### ■ WEIGHTS

Curb weight

1730kg\*

Towing capacity

1600kg with trailer brakes

750kg without trailer brakes

#### ■ CHASSIS

Suspension: front

Double wishbones, coil springs,  
gas-pressurized shock absorbers,  
stabiliser bar

Suspension: rear

Double wishbones, coil springs,  
gas-pressurized shock absorbers,  
stabiliser bar

Brakes: front/rear

296mm ventilated disc brakes/

307mm ventilated disc brakes

Transmission

4-speed electronically  
controlled automatic  
transmission

Steering

Rack and pinion with road speed-  
sensitive variable power assist

Tyres

225/60 ZR16 Dunlop D8z

#### ■ ENGINE

Type

4.0-litre V8 Quad Cam 32-valve

Displacement

3969cc

Max. horsepower

190kW/5600rpm (DIN)

Max. torque

360Nm/4400rpm (DIN)

Fuel system

Electronic Fuel Injection

*Lexus is distributed in Australia by AMI Toyota Limited. IMPORTANT NOTICE: "Information contained in this brochure was correct at the time of printing. AMI Toyota Limited ACN 001 300 912 ("AMI") reserves the right to alter any detail of the specifications and equipment without notice. AMI, in so far as it is permitted by law to do so, shall not be liable in any way as a result of any reliance placed by any person on anything contained in this brochure. You should therefore check with your dealer at the time of ordering your motor vehicle to ensure that the colour, specifications, equipment, design features and options are available for the vehicle you are ordering. Please note that some options may only be available in combination with others. Authorised Lexus dealers will on request provide up to date information on all accessories, design features, prices and availability. Note: Vehicle body colour may differ from the printed photos in this brochure/catalogue/saver owing to the printing process." Part Number: LS4001092*

Though it took six years to design and develop, and another three years for the Lexus spirit to mature into the subtle developments of the new LS400, this represents only the first part of our commitment to all Lexus owners. Because Lexus aims to make not only the finest performance sedan in the world, but also to maintain the most satisfied owners.

You'll notice this essential difference in all your contact with a Lexus dealership. For Lexus dealers have been carefully chosen for their commitment to your motoring enjoyment. From the stand alone dealerships, courteous receptionists and low-key salespeople to the computerised inventory and keeping of service records that place your car's service history on-line at every Lexus dealership in the country.



**ENGINE**

Type  
4.0-litre V8 Quad Cam 32-valve

Displacement  
3969cc

Max. horsepower  
190kW/2600rpm (DIN)

Max. torque  
360Nm/4100rpm (DIN)

Fuel system  
Electronic fuel injection

**CHASSIS**

Suspension: front  
Double wishbone, coil springs,  
gas-pressurised shock absorbers,  
stabiliser bar

Suspension: rear  
Double wishbone, coil springs,  
gas-pressurised shock absorbers,  
stabiliser bar

Brakes: front/rear  
307mm ventilated disc brakes/  
296mm ventilated disc brakes

**DIMENSIONS**

Overall length  
4995mm

Width  
1830mm

Height  
1425mm

Wheelbase  
2815mm

Tread front/rear  
1565mm/1525mm

At Lexus showrooms you'll be met by knowledgeable salespeople. They are readily available to help you choose the right Lexus for you.

Physical condition of your LS400 is constantly monitored by Lexus' self-diagnostic system, helping engineers quickly

The computerised system keeps your car's service history and places an order for any parts required automatically.

Lexus is distributed in Australia by JMI Toyota Limited. IMPORTANT NOTICE: Information contained in this brochure was correct at the time of printing. JMI Toyota Limited, JCM 004 300 912 (J.M.I.C.) reserves the right to alter any detail of the specifications and equipment without notice. JMI is not responsible for any error or omission. This brochure is not to be used as a basis for any claim or any action taken by any person.

4-speed electronically controlled automatic transmission

Minimum turning radius (kerb to kerb)  
5.2m

the Lexus LS400 is designed to ensure your complete satisfaction. Your dealer will help you choose the right Lexus for you.

Steering  
Rack and pinion with road speed-sensitive variable power assist

Fuel tank capacity  
85 litres

first two years are complimentary. They stand as an outstanding warranty which

Types  
252160 XR16 Duple D8x

**WEIGHTS**  
Curb weight  
1730kg\*

print and extends to 3 years or 100,000 kilometres, as well as an anti corrosion treatment.

In the unlikely event of a problem, Lexus Roadside Assistance

Towing capacity  
1600kg with trailer brakes  
750kg without trailer brakes

Protection is ready to help you 24-hours a day, on a toll-free number. In all likelihood, you'll

never have to use. But it's our way of reaffirming our total commitment to your complete satisfaction,

now and in the future.

now and in the future.

now and in the future.

now and in the future.



 LEXUS