

Mazda3

ZOOM

zoom-zoom
zoom-zoom



mazda

Leave the everyday behind

Explore fresh directions

Get to where you want to be

Keep the momentum flowing

Because life is a thing in motion



The sense of motion should never stop

So Mazda3 looks like it wants to go

Goes like there's nothing it'd rather do

Innovates to take enjoyment further

While rewarding you all the way

We call this Zoom-Zoom



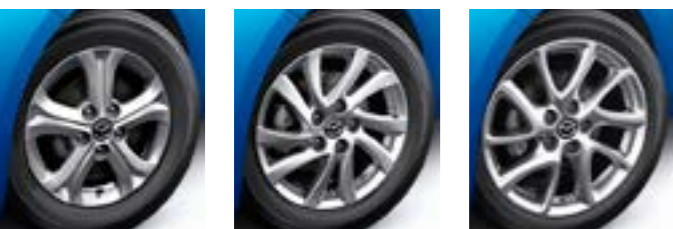
zoom-zoom
zoom-zoom

YOU'LL JUST WANT TO GET MOVING

Eager to get on the move, always out for fun. Sound familiar? It does to Mazda3. Because in the hunt for excitement, it's as keen to get going as you are.

You'll feel this love of the drive from the second you take off. It doesn't just take corners, it takes to them with a light but superbly balanced step. Independent suspension features MacPherson struts up front and a clever multi-link layout at the back. It's tuned to give you real feel for the road, yet deftly keeps bumps from interrupting your flow. And thanks to electro-hydraulic power steering every move you make feels smooth, intuitive and irresistible.

Even from outside Mazda3 expresses enthusiasm. From its aerodynamic nose to every sculpted detail, you get the sense it can't wait for the trip to begin.



Street smart. Neo wears 15 inch alloys, Maxx Sport 16 inch, SP25 17 inch. Premium low profile tyres boost handling and safety.



IT'S JUST GO, GO, GO

There are plenty of ways to get things in motion with Mazda3. And all these ways have the same lively spirit at heart.

Neo and Maxx Sport get their drive from an advanced 2.0 litre 4-cylinder engine that not only makes for eager performance, but also takes it further with great fuel economy. Naturally it's got all the right gear to encourage driving fun. DOHC and Sequential Valve Timing (S-VT) give you a

sparkling 108kW, all from regular unleaded fuel. Want to take it up a notch? SP25 gives you an even bigger 122kW punch from 2.5 litres. Engines that thrive on driving need keen transmissions to play with. Good thing you can opt for the full involvement of a 6-speed manual, or a quick-thinking 5-speed Activematic.

Or maybe you want sporty get-up-and-go with the exceptional economy and low

emissions of diesel? No problem, Mazda3 Diesel has the answers in hi-tech turbocharged form. Its 2.2 litre 4-cylinder engine uses high pressure common-rail direct fuel injection to produce 110kW of power and a meaty 360Nm of torque. Match this with six sporty manual gears and for every 100km enjoyed you'll use just 5.7 litres' of fuel.



Auto with go. With optional 5-speed Activematic changes can be fully automatic, or you can take control in manual mode. Automatic shifts are enhanced by Active Adaptive Shift (AAS), which learns your driving style and selects just the right gear.



6-speed sensation. Manual allows snappy shifts between ratios chosen for sharp acceleration and maximum fuel economy.



[WATCH THE ACTIVEMATIC ANIMATION >](#)



SKYACTIV TECHNOLOGY.
ENJOYMENT GOES EVEN FURTHER

We're committed to reducing the environmental impact of our cars. But we're not about to let driving be any less fun. So at Mazda we took on the challenge in our own way, asking how we could unlock more performance, yet achieve more efficiency at the same time? In Mazda3 SP20 SKYACTIV you can experience this breakthrough. Its innovative 2.0 litre 4-cylinder engine isn't just new. It's a new way of looking at engines

altogether. Fundamentally advancing every area of performance, it pumps up the fun factor by releasing more power and torque. You'll be smiling for a long time too, with just 6.1 (sedan) or 6.2 (hatch) litres of fuel used every 100km!

How does the SKYACTIV-G engine do it? Direct fuel injection employing multi-hole injectors combines with a unique piston

design to achieve much higher compression of the fuel and air mix. So not only do you get a more generous spread of power and torque, but much lower fuel usage with it. Extensive reduction of efficiency-sapping internal friction liberates extra free-revving power.

Not that the engine can take all the credit - the lightweight SKYACTIV-Drive transmission is a smart operator too. It locks up over a

wide range for more direct, manual-like shifting feel and power delivery. Its 6-speeds give fuel economy a lift and shifts are quick and smooth.

You're even getting ahead at a standstill. Come to a halt and the i-stop system turns off the engine to save fuel, as long as operating conditions are met. The engine stops in perfect position to leap back to life as you release the brake, taking around half the time of other idle stop systems.



More fun from less. SKYACTIV TECHNOLOGY combines a range of highly efficient engine and transmission innovations. So you'll have more enjoyment with less fuel consumption and emissions.



VISIT THE SKYACTIV TECHNOLOGY >

SKYACTIV
TECHNOLOGY





THIS IS THE WAY TO GO

Now this is how a trip should be, with steering wheel-mounted switches linked to a helpful multi information display and trip computer,³ not to mention cruise control and audio functions. There's standard Bluetooth® for hands-free phone use and MP3 player connectivity. Air-conditioning is included, and from Maxx Sport up you're individually maintained at the perfect operating temperature by dual-zone climate control. You're also indulged by sat nav, and soft-to-touch leather on the steering wheel and gear shifter.

How about some music? Neo packs an MP3/WMA compatible CD player with 6 speakers. This is powerfully enhanced in SP20 SKYACTIV Luxury and SP25 by 242 watt, 10 speaker Bose® audio. All models plug you in with an MP3 player auxiliary input and iPod® compatible USB port.

MP3 **WMA** **Bluetooth** **BOSE**



YOU'LL WISH THE TRIP WAS LONGER

As soon as you sit down, you know it feels right. No surprise really, as the driver's seat is height adjustable, while the steering wheel lets you vary both tilt and reach. Choose SP20 SKYACTIV Luxury or SP25 and seats impress with rich black leather.⁴ Frequently used controls invite easy use, making themselves known from elegant black surrounds with a satin silver finish.

It's just the sort of space you want to share with others. Happily, five adults are easily accommodated in a cabin well insulated from noise and vibration. Everyone's gear is neatly taken care of by a range of clever storage spaces. Luggage? Both hatch and sedan offer generous load spaces and 60/40 split-fold rear seats quickly deal with out-of-the-ordinary objects.

So easy. Trips to the shops or weekends away – both sedan and hatch have plenty of easily accessible luggage room.



Control room. Multi information display shows everything from audio and fuel economy info to service reminders. Maxx Sport and up feature a colour 4.1 inch screen incorporating easy-to-use sat nav, plus an in-dash single disc MP3 compatible CD player.



Sounds perfect. 242 watt Bose® digital amplifier creates superb sound through 10 speakers including subwoofer in SP20 SKYACTIV Luxury and SP25.



Power on. With SP25 you just jump in and start up by hitting the engine start button. All without keys, thanks to smart keyless entry.



Chase the sun. SP25 opens up extra enjoyment with a power-sliding and tilting glass sunroof.



Stay connected. Bluetooth® lets you make hands-free phone calls and enjoy MP3 player connectivity.

Clear as day. Sporty instrument cluster brightly illuminated for enhanced readability. Highlights feature satin finish.

ALWAYS ON YOUR SIDE

With Mazda3 the latest in safety is backing you up. Its rigid, reinforced body integrates 'Triple H' construction with front and rear crumple zones. It's part of the Mazda Advanced Impact Distribution and Absorption System (MAIDAS), which absorbs impact energy and directs it away from the occupant cell.

There are six airbags built in, including front, side (front) and curtain (front and rear). You've also got active front head restraints, which provide protective neck support by instantly moving forward in case of a rear-end impact. In the front seats you're reminded to wear your belt, which is equipped with pretensioners and load-limiters.

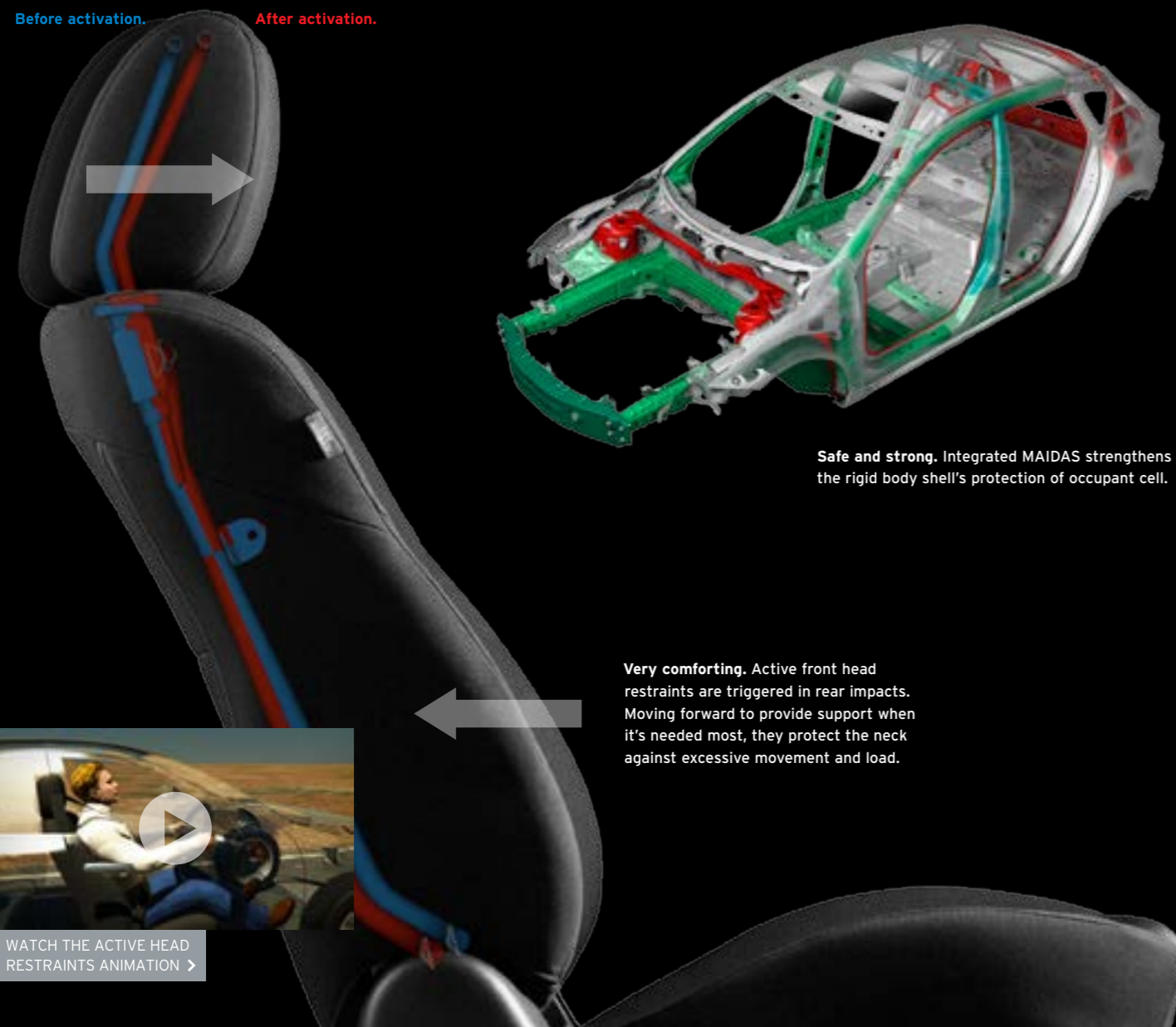
Whatever the road conditions, confidence is boosted by standard Dynamic Stability Control (DSC) incorporating

Traction Control System (TCS). The brakes are reassuring too. Large discs all round feature ABS and Electronic Brake-force Distribution (EBD), which optimises braking force according to vehicle load. Emergency Brake Assist (EBA) monitors pedal speed and force to recognise emergency braking, adding stopping power right when needed.

Safe driving is encouraged by intuitive features like rain-sensing wipers and auto on/off headlamps in most models. And you'll want to know your Mazda3 is secure. Don't worry - it's got remote central locking and an engine immobiliser.



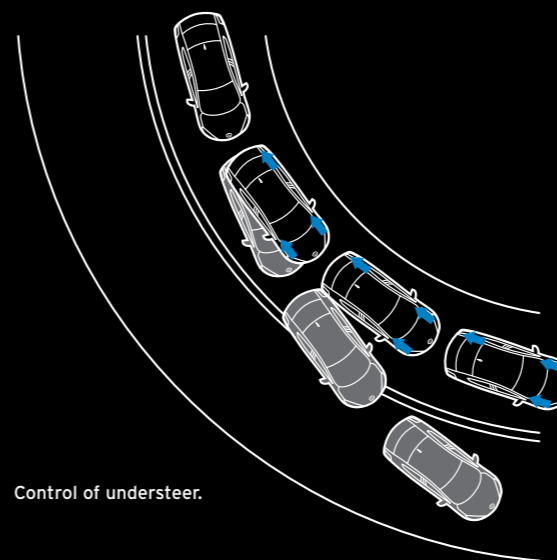
Before activation. After activation.



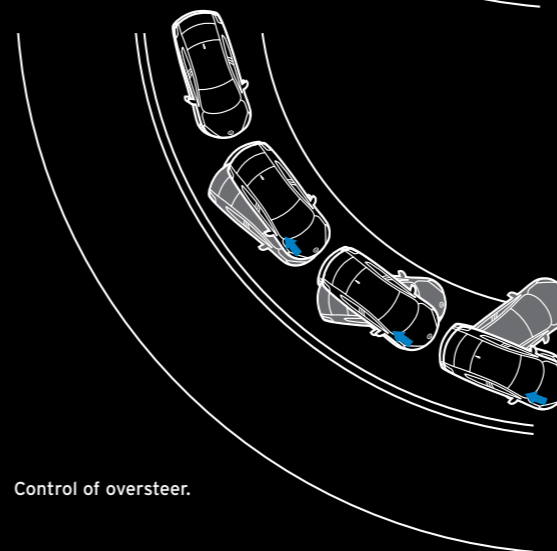
WATCH THE ACTIVE HEAD RESTRAINTS ANIMATION >

Very comforting. Active front head restraints are triggered in rear impacts. Moving forward to provide support when it's needed most, they protect the neck against excessive movement and load.

Safe and strong. Integrated MAIDAS strengthens the rigid body shell's protection of occupant cell.



Control of understeer.



Control of oversteer.

Well controlled. DSC helps maintain grip by managing the braking force and engine torque delivered to individual wheels. So you'll enjoy greater control in all road conditions.



WATCH THE AIRBAGS AND SEATBELTS ANIMATION >

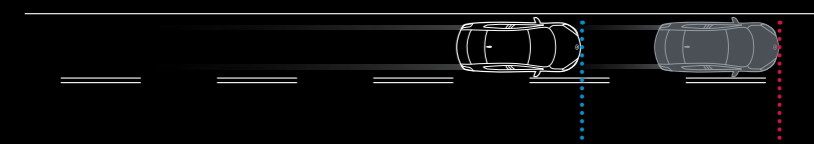
Well equipped. Six SRS airbags comprise driver and passenger front and side airbags plus front and rear curtain airbags.



Looking out. SP25's powerful Bi-Xenon headlamps illuminate a longer range on high beam and enhance peripheral vision on low beam. Headlamp washers keep lenses clear.



No key needed. With SP25's remote locking, you can hop in and drive without searching for keys. Just carrying the locking fob lets you enter by pressing the button on either front door. Then simply start up by hitting the ignition button.



Secure stopping. Stopping distance with EBA, ABS and EBD.

Stopping distance with no assistance.



NEO

It's big on looks, features and has plenty of go. With Neo you've got lots of Zoom-Zoom packed into a small car.

- 2.0 litre in-line 4 cylinder 16 valve DOHC S-VT
- 108 kW @ 6,500 rpm (max. power)
- 182 Nm @ 4,500 rpm (max. torque)
- 55 litre fuel tank capacity
- Fuel consumption (combined): from 7.9 litres per 100 km¹
- 6-speed manual or 5-speed Activematic (auto)
- 15 inch alloy wheels
- Rear spoiler (hatch only)
- Headlamps (Halogen)
- Power mirrors (body coloured)
- Power windows
- Air-conditioning
- Bluetooth® (hands-free compatible)
- Multi information display with: ambient temperature gauge, maintenance monitor and trip computer³
- Cruise control
- Seat trim: cloth
- Seats (front) with: height adjustment (driver) and seat back pocket (passenger)
- Seats (rear) with: 60/40 split-fold backrest and centre fold down armrest
- Tilt and telescopic adjustable steering wheel
- Vanity mirrors (front)
- Wipers (front) 2-speed with variable intermittent function
- Wiper (rear) with intermittent function (hatch only)
- AM/FM tuner with CD player, single disc (MP3/WMA compatible) and 6 speakers
- Auxiliary input (3.5 mm MP3 player compatible)
- Bluetooth® audio (MP3 player compatible)
- USB input (iPod® compatible)
- Active head restraints (front)
- Airbags SRS: front (driver and passenger), side (front) and curtain (front and rear)
- Anti-lock Braking System (ABS)
- Dynamic Stability Control (DSC)
- Electronic Brake-force Distribution (EBD)
- Emergency Brake Assist (EBA)
- Intrusion-minimising brake pedal (manual only)
- Intrusion-minimising clutch pedal (manual only)
- Remote boot release (sedan only)
- Remote central locking (2 transmitters)
- Traction Control System (TCS)
- 'Triple H' safety construction with front and rear crumple zones



Hatch



Sedan



NEO HATCH IN VELOCITY RED MICA



MAXX SPORT SEDAN IN ALUMINIUM METALLIC

MAXX SPORT

It carries extra attitude on the outside and adds to the good stuff inside. There's even more of what makes Mazda3 great in Maxx Sport.

Maxx Sport features additional to the Neo include:

- 16 inch alloy wheels
- Body kit comprising: rear spoiler (sedan) and side skirts
- Fog-lamps (front)
- Air-conditioning (dual-zone climate control)
- Headlamps auto on/off function
- Leather-wrapped: gear shift knob and steering wheel
- Multi information display with: satellite navigation
- Wipers (front) 2-speed with rain-sensing function



Hatch



Sedan



Good sign. The mark of heightened driving enjoyment with low fuel consumption and emissions.

Blue eyes. Distinctive headlamps with blue rings help set SP20 SKYACTIV apart.

Feeling special. Exclusive blue illumination complements clearly defined white graphics.

SP20 SKYACTIV

It cuts environmental impact, but ramps up driving fun. Breakthrough engine technology boosts power and torque while using less fuel.

SP20 SKYACTIV features additional to the Maxx Sport include:

- 2.0 litre in-line 4 cylinder 16 valve DOHC S-VT with i-stop
- 113 kW @ 6,000 rpm (max. power)
- 194 Nm @ 4,100 rpm (max. torque)
- Fuel consumption (combined): from 6.1 litres per 100 km¹
- 6-speed SKYACTIV-Drive (auto) only
- Body kit comprising: sports grille
- Overhead sunglass storage box
- Scuff plates (stainless steel)
- Seats (front) with: lumbar adjustment (driver)

Luxury option includes:

- Headlamps (Bi-Xenon)
- Centre armrest console (sliding)
- Seat trim: leather⁴
- Premium Bose® 242 watt amplifier and 10 speakers (including subwoofer)



Hatch



Sedan



WATCH THE SP20 SKYACTIV ROAD TEST VIDEO >



DIESEL

Advanced turbo diesel power means great performance and amazing fuel economy are yours. With Mazda3 Diesel you can extend your enjoyment.

Diesel features additional to the Maxx Sport include:

- 2.2 litre in-line 4 cylinder 16 valve DOHC intercooled turbo diesel
- 110 kW @ 3,500 rpm (max. power)
- 360 Nm @ 1,800 - 2,600 rpm (max. torque)
- Fuel consumption (combined): 5.7 litres per 100 km¹
- 6-speed manual only
- Tail-lamps (LED)



Hatch



Sedan



DIESEL SEDAN IN GRAPHITE MICA



SP25

Looking for a sportier edge? SP25 has got what you're after, with even higher performance, dialled up style and more luxury too.

SP25 features additional to the Maxx Sport include:

- 2.5 litre in-line 4 cylinder 16 valve DOHC S-VT
- 122 kW @ 6,000 rpm (max. power)
- 227 Nm @ 4,000 rpm (max. torque)
- 60 litre fuel tank capacity
- Fuel consumption (combined): 8.6 litres per 100 km¹
- 17 inch alloy wheels
- Body kit comprising: sports grille
- Headlamps (Bi-Xenon)
- Power-sliding and tilt glass sunroof
- Tail-lamps (LED)
- Centre armrest console (sliding)
- Overhead sunglass storage box
- Paddle shift gear control (Activematic only)
- Scuff plates (stainless steel)
- Seat trim: leather⁴
- Seats (front) with: lumbar adjustment (driver)
- Smart keyless entry and push-button engine start
- Vanity mirrors (front) with illumination
- Premium Bose® 242 watt amplifier and 10 speakers (including subwoofer)



Hatch



Sedan

SP25 HATCH IN CRYSTAL WHITE PEARL MICA

SPECIFICATIONS

	Neo	Maxx Sport	Diesel	SP20 SKYACTIV	SP25	
Powertrain						
Engine type	2.0 litre in-line 4 cylinder 16 valve DOHC S-VT	2.0 litre in-line 4 cylinder 16 valve DOHC S-VT	2.2 litre in-line 4 cylinder 16 valve DOHC intercooled turbo diesel	2.0 litre in-line 4 cylinder 16 valve DOHC S-VT with i-stop	2.5 litre in-line 4 cylinder 16 valve DOHC S-VT	
Engine capacity	1,999 cc	1,999 cc	2,183 cc	1,998 cc	2,488 cc	
Bore and stroke	87.5 mm x 83.1 mm	87.5 mm x 83.1 mm	86.0 mm x 94.0 mm	83.5 mm x 91.2 mm	89.0 mm x 100.0 mm	
Compression ratio	10.0 : 1	10.0 : 1	16.3 : 1	12.0 : 1	9.7 : 1	
Maximum power	108 kW @ 6,500 rpm	108 kW @ 6,500 rpm	110 kW @ 3,500 rpm	113 kW @ 6,000 rpm	122 kW @ 6,000 rpm	
Maximum torque	182 Nm @ 4,500 rpm	182 Nm @ 4,500 rpm	360 Nm @ 1,800 - 2,600 rpm	194 Nm @ 4,100 rpm	227 Nm @ 4,000 rpm	
Throttle control	Electronic (drive-by-wire)					
Fuel system	Electronic multipoint injection	Electronic multipoint injection	Common-rail electronic direct injection	Electronic direct injection	Electronic multipoint injection	
Fuel tank capacity	55 litres	55 litres	55 litres	55 litres	60 litres	
Recommended fuel	Unleaded (91RON or higher) or E10	Unleaded (91RON or higher) or E10	Diesel (ultra low sulphur)	Unleaded (91RON or higher) or E10	Unleaded (91RON or higher) or E10	
Fuel consumption ¹	man (combined)	7.9 litres per 100 km	7.9 litres per 100 km	5.7 litres per 100 km	-	8.6 litres per 100 km
	auto (combined)	8.2 - 8.4 litres per 100 km	8.2 - 8.4 litres per 100 km	-	6.1 - 6.2 litres per 100 km	8.6 litres per 100 km
Manual transmission	6-speed					
Activematic (auto) transmission	5-speed					
Gear ratio	1st - man / auto	3.454 / 3.620	3.454 / 3.620	3.538 / -	- / 3.552	3.454 / 3.620
	2nd	2.059 / 1.925	2.059 / 1.925	1.913 / -	- / 2.022	1.842 / 1.925
	3rd	1.392 / 1.285	1.392 / 1.285	1.218 / -	- / 1.452	1.310 / 1.285
	4th	1.030 / 0.933	1.030 / 0.933	0.880 / -	- / 1.000	1.030 / 0.933
	5th	0.795 / 0.692	0.795 / 0.692	0.809 / -	- / 0.708	0.837 / 0.692
	6th	0.717 / -	0.717 / -	0.711 / -	- / 0.599	0.717 / -
	reverse	3.198 / 3.405	3.198 / 3.405	3.831 / -	- / 3.893	3.198 / 3.405
	final drive	4.388 / 3.863	4.388 / 3.863	3.421 (1st - 4th) / 2.954 (5th - 6th) / -	- / 3.812	4.105 / 3.652

Chassis						
Brake diameter	front	278 mm	278 mm	300 mm	300 mm	300 mm
	rear	265 mm	265 mm	280 mm	265 mm	280 mm
Brake type	front	Ventilated disc				
	rear	Solid disc				
Steering type	Electro-hydraulic power assist steering					
Suspension	front	MacPherson strut				
	rear	Multi-link				
Turning circle	kerb to kerb	10.9 m				
Tyre size		195/65R15 91V	205/55R16 91V	205/55R16 91V	205/55R16 91V	205/50R17 89W
Wheel size		15 x 6.0 J	16 x 6.5 J	16 x 6.5 J	16 x 6.5 J	17 x 7.0 J
Wheel type		Alloy				
Wheel type (spare)		Temporary				

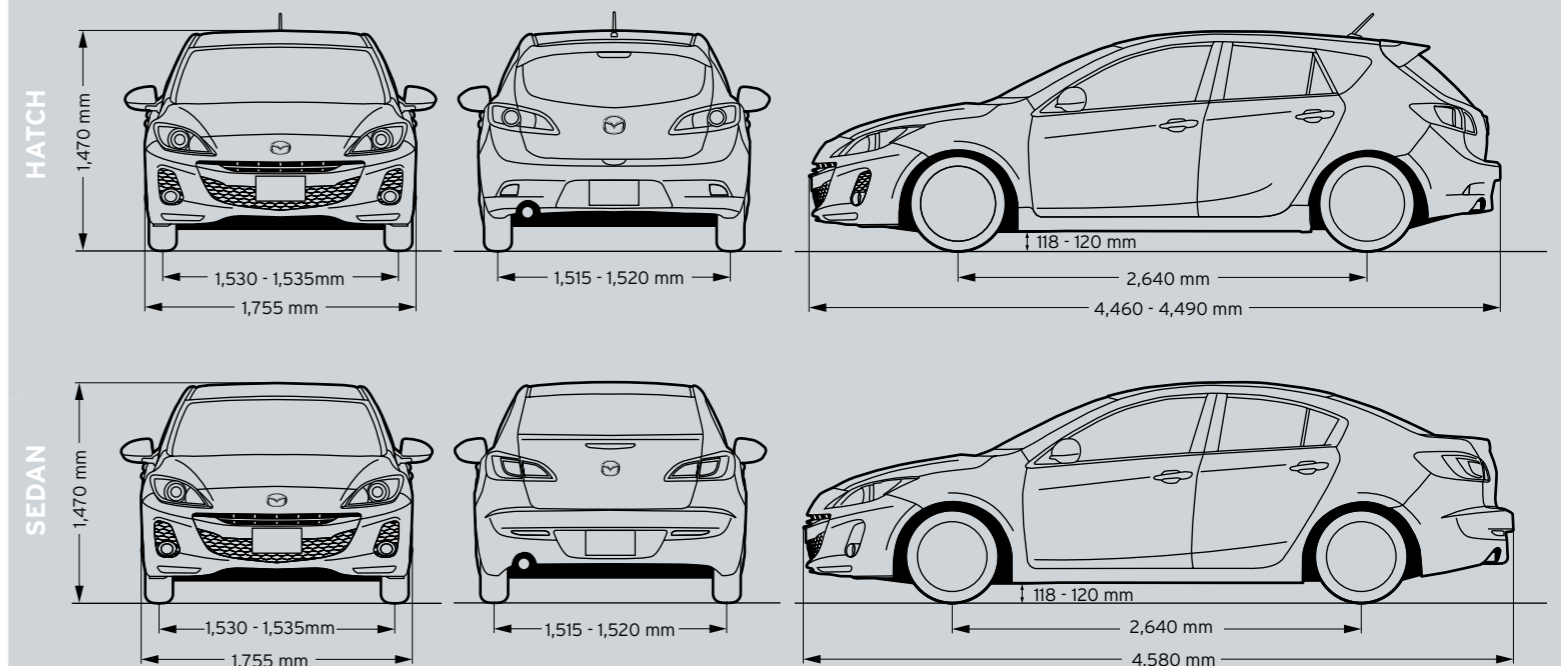
Weights and capacities							
Cargo room volume (VDA)	hatch	litres	340	340	340	300 or 276 (Luxury)	276
	sedan	litres	430	430	430	400	400
Kerb weight man	hatch	kg	1,281	1,297	1,458	-	1,369
	sedan	kg	1,265	1,280	1,440	-	1,364

Weights and capacities (continued)

Kerb weight auto	hatch	kg	1,304	1,319	-	1,329 - 1,346	1,406
	sedan	kg	1,292	1,307	-	1,318 - 1,336	1,400
Towing capacity ²	braked	kg	900	900	900	900	900
	unbraked	kg	500	500	550	500	550

Dimensions

Ground clearance	laden	mm	118	118	120	118	118
Overall height		mm	1,470	1,470	1,470	1,470	1,470
Overall length	hatch	mm	4,460	4,460	4,460	4,460	4,490
Overall length	sedan	mm	4,580	4,580	4,580	4,580	4,580
Overall width		mm	1,755	1,755	1,755	1,755	1,755
Track	front	mm	1,535	1,535	1,535	1,535	1,530
	rear	mm	1,520	1,520	1,520	1,520	1,515
Wheelbase		mm	2,640	2,640	2,640	2,640	2,640



Exterior

Body kit comprising:	rear spoiler	Hatch only	●	●	●	●
	side skirts	-	●	●	●	●
	sports grille	-	-	-	●	●
Door handles (body coloured)		●	●	●	●	●
Exhaust extension (chrome)		●	●	●	●	●
Fog-lamps (front)		-	●	●	●	●
Front and rear bumpers (body coloured)		●	●	●	●	●
Green-tinted windscreen, side and rear windows		●	●	●	●	●
Headlamps (Bi-Xenon)		-	-	-	○	●
Headlamps (Halogen)		●	●	●	●	-
Metallic/Mica paint		●	●	●	●	●

● Standard Feature ○ Luxury Option - Not Available

SPECIFICATIONS

Exterior (continued)

	Neo	Maxx Sport	Diesel	SP20 SKYACTIV	SP25
Power mirrors (body coloured)	●	●	●	●	●
Power-sliding and tilt glass sunroof	-	-	-	-	●
Power windows	●	●	●	●	●
Roof rack mounting points	●	●	●	●	●
Tail-lamps (LED)	-	-	●	●	●

Interior

	Neo	Maxx Sport	Diesel	SP20 SKYACTIV	SP25
Air-conditioning	●	-	-	-	-
Air-conditioning (dual-zone climate control)	-	●	●	●	●
Automatic transmission indicator in instrument cluster	Auto only	Auto only	-	●	Auto only
Bluetooth® (hands-free compatible)	●	●	●	●	●
Centre armrest console (sliding) with tray	-	-	-	○	●
Centre armrest console with tray	●	●	●	●	-
Critical function warning lights/chimes	●	●	●	●	●
Cruise control	●	●	●	●	●
Cupholders	●	●	●	●	●
Digital clock	●	●	●	●	●
Door ajar warning light	●	●	●	●	●
Door pockets (front)	●	●	●	●	●
Driver's left footrest	●	●	●	●	●
Glove box (illuminated)	●	●	●	●	●
Headlamps auto on/off function	-	●	●	●	●
Illuminated entry system with delayed fade	●	●	●	●	●
Instrument panel light dimmer	●	●	●	●	●
Interior illumination:		cargo room lamp, map reading spot lamps, power window switch (driver)	●	●	●
Interior release for:		boot lid (sedan only), fuel filler door	●	●	●
Leather-wrapped:		gear shift knob, steering wheel	-	●	●
Lights-left-on audible warning	●	●	●	●	●
Low fuel warning light	●	●	●	●	●
Multi information display with:		ambient temperature gauge, maintenance monitor, trip computer ³	●	●	●
		satellite navigation	-	●	●
Overhead sunglass storage box	-	-	-	●	●
Passenger assist grips (front and rear)	●	●	●	●	●
Scuff plates (stainless steel)	-	-	-	●	●
Seat trim:		cloth	●	●	-
		leather ⁴	-	-	○
Seats (front) with:		adjustable head restraints, height adjustment (driver), rake and slide adjustment, seat back pocket (passenger)	●	●	●
		lumbar adjustment (driver)	-	-	●
Seats (rear) with:		60/40 split-fold backrest, adjustable head restraints, centre fold down armrest	●	●	●
Smart keyless entry and push-button engine start	-	-	-	-	●
Tachometer and electronic odometer/tripmeter	●	●	●	●	●
Tilt and telescopic adjustable steering wheel	●	●	●	●	●
Vanity mirrors (front)	●	●	●	-	-
Vanity mirrors (front) with illumination	-	-	-	●	●
Ventilation pollen filter	●	●	●	●	●

Interior (continued)

	Neo	Maxx Sport	Diesel	SP20 SKYACTIV	SP25
Window demister (rear)	●	●	●	●	●
Wipers (front) 2-speed with rain-sensing function	-	●	●	●	●
Wipers (front) 2-speed with variable intermittent function	●	-	-	-	-
Wiper (rear) with intermittent function (hatch only)	●	●	●	●	●

Audio

	Neo	Maxx Sport	Diesel	SP20 SKYACTIV	SP25
AM/FM tuner	●	●	●	●	●
Auxiliary input (3.5 mm MP3 player compatible)	●	●	●	●	●
Bluetooth® audio (MP3 player compatible)	●	●	●	●	●
CD player, single disc (MP3/WMA compatible)	●	●	●	●	●
Premium Bose® 242 watt amplifier and speakers (including subwoofer)	-	-	-	○	●
Speakers (6)	●	●	●	●	-
Speakers (10)	-	-	-	○	●
Steering wheel-mounted audio controls	●	●	●	●	●
USB input (iPod® compatible)	●	●	●	●	●

Safety

	Neo	Maxx Sport	Diesel	SP20 SKYACTIV	SP25
Active head restraints (front)	●	●	●	●	●
Airbags SRS:		front (driver and passenger), side (front), curtain (front and rear)	●	●	●
Anti-lock Braking System (ABS)	●	●	●	●	●
Child restraint anchor points	●	●	●	●	●
Collapsible steering column	●	●	●	●	●
Dynamic Stability Control (DSC)	●	●	●	●	●
Electronic Brake-force Distribution (EBD)	●	●	●	●	●
Emergency Brake Assist (EBA)	●	●	●	●	●
Engine immobiliser	●	●	●	●	●
High mount stop lamp	●	●	●	●	●
Intrusion-minimising brake pedal	●	●	●	●	●
Intrusion-minimising clutch pedal	Manual only	Manual only	●	-	Manual only
Left-hand-side convex (wide angle) exterior mirror	●	●	●	●	●
One touch (up and down) power window (driver)	●	●	●	●	●
Remote boot release	Sedan only	Sedan only	Sedan only	Sedan only	Sedan only
Remote central locking (2 transmitters)	●	●	●	●	●
Seat-belt warning audible and visual (front)	●	●	●	●	●
Seat-belts 3-point lap-sash (all seats)	●	●	●	●	●
Seat-belts (front) with pretensioners, load-limiters and height adjustable shoulder anchorages	●	●	●	●	●
Side impact door beams	●	●	●	●	●
Traction Control System (TCS)	●	●	●	●	●
'Triple H' safety construction with front and rear crumple zones	●	●	●	●	●



SAVE FUEL, BUT STILL HAVE FUN THE MAZDA DIFFERENCE

At Mazda we think it's a given that every car should minimise its environmental impact. Although this is very important, we never allow it to get in the way of driver enjoyment. So solutions like i-stop are all the more valuable. To save fuel it shuts down the engine when you stop for more than a few seconds. Unlike other systems it re-starts without a time lag, cleverly using the alternator to stop pistons in the best position to start again. It's no different to riding a bike. For a quick, efficient start the ideal pedal position is critical. Efficiency combined with a love of motion. It means driving a Mazda will always be fun.

Driving enjoyment has an exciting future

We're working hard to make driving a Mazda even more exciting. With cars that use less fuel, but produce more power. That are lighter, but contain more innovation. We call this breakthrough SKYACTIV TECHNOLOGY. It will let every Mazda deliver more driving pleasure while being kinder to the planet. Discover more at mazdafuture.com

Design direction captures the 'Soul of Motion'

Zoom-Zoom is finding expression in an exciting new design direction known as 'KODO - Soul of Motion'. Shaping our very latest production models, 'KODO' is inspired by the moment a body tenses

before launching into motion. It's another way we see a future filled with driving enjoyment.

Rest assured - your warranty

The quality built into Mazda3 is backed up by a 3-year, unlimited kilometre factory warranty and 6-year panel protection warranty.

Maintain that Zoom-Zoom

Your Mazda3 deserves the best in care. Servicing through the Mazda Maintenance Program gives your car the advantage of factory trained Service Technicians and advanced computer diagnostic systems. As well as maintaining your Mazda in A1 condition, you'll also be protecting your vehicle's outstanding resale value.

Help is at hand - Mazda Roadside Assistance

Flat batteries, running out of fuel, flat tyres - everyone faces hiccups from time to time. When the unexpected happens, Mazda Roadside Assistance is there to keep you moving. You'll be covered 24 hours a day, 365 days a year, all round Australia. Better still, your Mazda will only be worked on by Mazda-approved technicians. Choose a Standard policy offering everything needed to get going again, or Premium with extras like accommodation, a rental car and vehicle recovery. Either can be purchased across the entire Mazda range. (Terms and conditions apply.)

Accessories add enjoyment

Mazda3 gives you spirited performance and great features. And with Mazda Genuine Accessories, Mazda3 ownership is even more enjoyable. They allow you to personalise your car, and protect your investment. What's more, they deliver superb design, quality and safety, all backed by a Genuine Mazda Warranty. Mazda Genuine Accessories give you even more Zoom-Zoom.

For further information visit mazda.com.au or Freecall 1800 034 411



Like us on the official Mazda Australia fan page for the latest pictures, videos, events, news and competitions. Ask questions, give feedback or upload your own photos. Join the conversation at facebook.com/mazdaaus



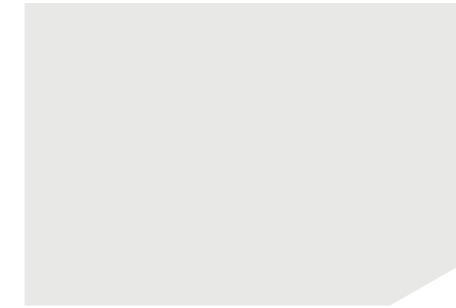
Join the conversation on Twitter. Keep up with breaking Mazda news, videos and pictures from around the web. Tweet your questions, give feedback or post your own photos. twitter.com/mazdaaus



Visit Mazda Australia's YouTube channel. You'll find video content with exclusive behind-the-scenes footage. Plus Mazda E-Motion TV. youtube.com/zoomzoom

COLOURS

Exterior



Crystal White Pearl
Mica



Aluminium
Metallic



Dolphin Grey
Mica



Sky Blue
Mica



Velocity Red
Mica



Graphite
Mica

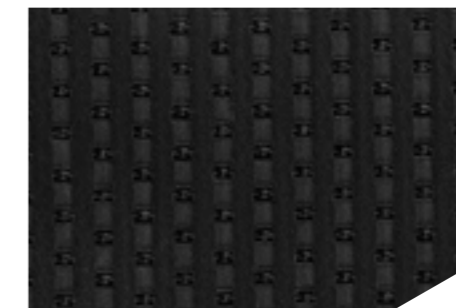


Black
Mica

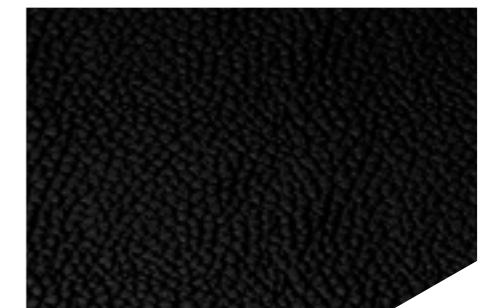
Interior



Black Cloth
Neo, Maxx Sport, Diesel



Black Cloth
SP20 SKYACTIV



Black Leather⁴
SP20 SKYACTIV Luxury, SP25

All care is taken to ensure the accuracy of this brochure at the time of publication. Specifications, features and model availability may vary from State to State and may change without notice. Please refer to mazda.com.au or consult your Mazda Dealer prior to placing an order to ascertain current information on model availability, specifications, options, features and prices. Mazda Australia Pty Limited will not be liable for any loss arising from the information in this brochure, whether in negligence or otherwise. Mazda Australia Pty Limited ABN 78 004 690 804. 385 Ferntree Gully Road, Mt Waverley, Victoria 3149. iPhone® and iPod® shown for illustrative purposes only and do not come standard with the vehicle. iPhone® and iPod® are trademarks of Apple Inc., registered in the US and other countries. Please check the compatibility of your Bluetooth® device (particularly your mobile phone) with the specific Mazda vehicle you intend to purchase as not all devices will operate correctly. Visit mazdahandsfree.com.au or consult your Mazda Dealer for further information. Due to the nature of the printing process, colours may vary from those shown in this brochure. Ask your Dealer to show you a product sample. Published March 2013. MAZ10681 126.000

¹ Fuel consumption figure based on ADR 81/02 test results. They are useful in comparing the fuel consumption of different vehicles. They may not be the fuel consumption achieved in practice. This will depend on traffic and road conditions and how the vehicle is driven. ² Subject to State or Territory regulations. ³ Trip computer displays current and average fuel economy, fuel range and average speed. ⁴ Leather interior includes Maztex material on selected high impact surfaces.



MX-5



Mazda 6



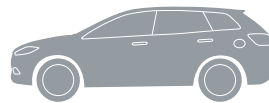
Mazda 3



BT-50



Mazda 2



CX-9



CX-5

zoom-zoom
zoom-zoom
zoom-zoom