



THE NEW ŠKODA
SUPERB

SPORTLINE | SCOUT



ŠKODA
SIMPLY CLEVER

SPORTLINE



WHAT MAKES THE SUPERB, SUPERB

Comfort usually isn't a metaphor for sportiness. But these two make a thrilling combination inside the ŠKODA SUPERB SPORTLINE. Whether it's slicing through traffic or running shopping errands, this car does it all without breaking a sweat, thanks to its razor-sharp looks and a host of sporty accoutrements, both inside and out.

That's Simply Clever. That's ŠKODA.

5 YEAR
WARRANTY[^]
UNLIMITED KMS

[^]Conditions and exclusions apply, see <https://www.skoda.com.au/owners/warranty>. Your rights under this warranty are provided in addition to, and in some cases overlap with, consumer guarantees under Australian Consumer Law and do not limit or replace them.

SUPERB SPORTLINE Sedan fitted with optional sunroof

TIME TO GET SOME SPORTY CLOTHING

Elegance can also be daring. Dynamic details in glossy black design give the SUPERB SPORTLINE a vigorous attitude. The sports chassis improves the car's aerodynamics as well as your driving pleasure.



SUPERB SPORTLINE Sedan fitted with optional sunroof

DYNAMIC DESIGN
This car can't be overlooked. A glossy black front grille and features to the sides of the air intake in the front bumper are accompanied by darkened fog lamps. The sporty look of your car is also underlined with 19" VEGA anthracite alloy wheels. The SUPERB also features full LED Matrix headlights, which offer enhanced road lighting and a higher degree of safety.

BADGE
As proof of the car's sports style there's a badge included on the front wing fenders.



REAR VIEW
While the ŠKODA inscription in the back declares the car's roots, the glossy black strip between the full LED rear lights comes exclusively with the SUPERB SPORTLINE. The liftback version also features the glossy black 5th door spoiler.

LIGHTS DON'T SHOW, THEY REVEAL

Advanced technology is made beautiful in the light design of the SUPERB. The car is the first ŠKODA to feature full LED Matrix headlights, which offer greater road lighting and a higher degree of safety.



HEADLIGHTS AND FOG LAMPS
Using a windscreen camera, the full LED Matrix headlights of the SUPERB can detect a car in front of you or in oncoming traffic. Based on this, the high beam adjusts itself incrementally. This ensures you get the best view without blinding other drivers. The excellent functionality of the fog lamps is powered by LED technology.



REAR LIGHTS
The full LED rear lights are fitted with animated turn indicators, which not only reveal where the driver is about to turn, but also add dynamism to the car. The rear lights also feature C-shaped illumination, typical for the ŠKODA family, but updated with a modern twist.

The image shows the front interior of a Skoda Superb Sportline. The dashboard is black with a red accent line. The center console features a large touchscreen display showing a navigation and media interface. The steering wheel is black with silver accents and the Skoda logo. The seats are black with a perforated texture. The overall design is modern and sporty.

FOR PILOTS AND CO-PILOTS

The dynamic design continues inside the SUPERB SPORTLINE. The interior offers the atmosphere of the sports cockpit as well as maximum comfort. The car features among other things attractive décor and upholstery, Alcantara® covered ceiling in black, multifunctional sports steering wheel in perforated leather, Virtual Cockpit and LED ambient lighting (with ten colour options) running along the inside of the interior. The Virtual Cockpit puts all the information you need right in front of your eyes, comes with specific graphics for the SPORTLINE version.



SPORTS STEERING WHEEL

The multifunctional sports steering wheel in black perforated leather with silver stitching allows you to control the radio, phone and alternatively DSG.

LED AMBIENT LIGHTING

You can choose your favourite colour, or complement each day with one of ten amazing colour options. This is also reflected by the Virtual Cockpit or Maxi DOT colour display background illumination.



STYLE AND FUNCTIONALITY

Front and rear sports seats, upholstered in a combination of black Alcantara® and leather/leatherette with silver stitching, provide maximum comfort even during a dynamic drive. For that maximum sporty feeling, front seats which feature cushion depth adjustment are available as an option. The electrically-adjustable front seats with built-in memory come as standard. The distinctive and extremely durable Alcantara® upholstery is also incorporated in the door panelling.

WIRELESS CONNECTIVITY



SUPERB FEATURING WIRELESS APPLE CARPLAY® & WIRELESS ANDROID AUTO™*
 Combining our smart car with your smartphone was always going to be a good idea. SUPERB featuring wireless Apple CarPlay® & wireless Android Auto™ seamlessly connects compatible apps from your smartphone to your SKODA. So, whether you want to listen to music or receive turn-by-turn directions, you can do it all without touching your phone.

* SUPERB featuring wireless Apple CarPlay® & wireless Android Auto™ is compatible for selected apps with the latest smartphone versions of iOS and Android, active data service required.



WIRELESS CHARGING/USB
 The SUPERB comes with an enlarged phone box which wirelessly charges your phone while driving. This compartment is not only easily accessible, but is also suitable for large display devices. Two USB-C ports located in the centre console allow you to connect your external devices without the need for dongles or adapters.

CARRY EVERYTHING THAT MATTERS

Maximising space is nothing without maximising practicality. That's why we have Simply Clever solutions to keep your belongings safe. The SUPERB wagon also offers a roomy 660 litres or 1,950 litres after folding down the rear seats, while the sedan offers 625/1,760 litres.



POCKETS ON THE BACKREST

Storage pockets on the insides of the front seat backrests can hold a mobile phone, for example, or other small items.



JUMBO BOX

The spacious Jumbo Box storage compartment is housed in the front armrest. You can store your electronic items safely inside or cool it to keep your snacks fresh. A dual drinks holder with easy-open function can also be found on the centre console.

Overseas model show, local specification may vary.



BOTTLE HOLDER

You will find a 1.5-l bottle holder in a spacious compartment in the front doors and 0.5-l holder in the rear doors.



GLOVE COMPARTMENT

The storage compartment in the dashboard on the front passenger side can also be cooled when the air conditioning is on.



UMBRELLA BOX

An ingenious umbrella storage compartment is fitted inside the driver's door. It is designed to let water drain away from the car, keeping the interior dry. The original ŠKODA umbrella comes as part of the equipment.



NET PROGRAMME

The set of nets increases the flexibility of the luggage space while tightly securing objects. It includes one horizontal and two vertical nets. You can add a further net under the luggage compartment cover in the liftback version.

COMFORT AT YOUR COMMAND

Technology is nothing if it doesn't simplify your driving experience. Loaded with thoughtful features and sophisticated assistant systems, the SUPERB will indulge you in absolute comfort and support your driving confidence, whether keeping you relaxed on longer journeys or being entertained on the go.



KESSY
With the new version of the KESSY (Keyless Entry, Start and exit System) all doors can be used to unlock or lock the car.

ELECTRICALLY-CONTROLLED 5TH DOOR AND VIRTUAL PEDAL
The electrically-controlled 5th door opens and closes at the mere touch of the button on the remote control, central panel or directly on the 5th door. You can also adjust the upper door position to suit your needs. The door can be equipped with a virtual pedal enabling contact-free access.

Overseas model shown, local specification may vary.



VIRTUAL COCKPIT
A perfect overview is provided by the Virtual Cockpit, which can display on-board computer specifications in combination with other information such as navigation, for example. You can choose from five layouts, controlled via the View button on the multifunctional steering wheel – Classic view (shown), Modern view, Extended view, Basic view (suitable when driving at night or on the motorway) and Sport view.



ELECTRICALLY-ADJUSTABLE FRONT SEATS
The electrically-adjustable front seats with built-in memory can store three different positions. This superior level of comfort is always accompanied by ventilated front seats.



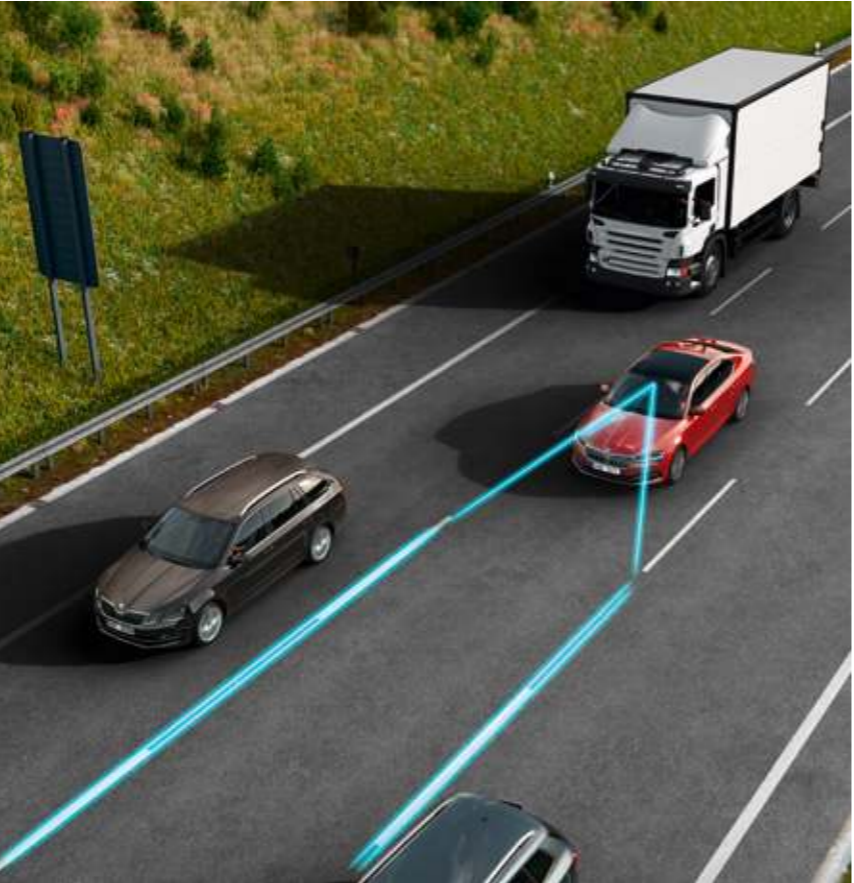
COMFORT IN THE BACK
On the rear part of the Jumbo Box you will find a socket (230 V or 12 V) and two USB slots, enabling mobile phone charging. In the car equipped with 3-zone Climatronic air conditioning, you will also find the control for the rear seat zone here.



CANTON SOUND SYSTEM
Enjoy absolute sound clarity, whether it's music or the spoken word, on the Canton Sound System with twelve speakers, including a speaker in the dashboard and subwoofer in the luggage compartment.

TRAVEL ASSIST

The Travel Assist system as well as its higher version combine the functions of several assistants and ensure that you feel safe and comfortable, no matter where you drive. For maximum safety, the system must be constantly monitored by the driver. That's why a capacitive steering wheel detects the driver's tactility, providing an interactive interface to the system. If the driver is not engaged in driving, this behavior is detected by the capacitive steering wheel.

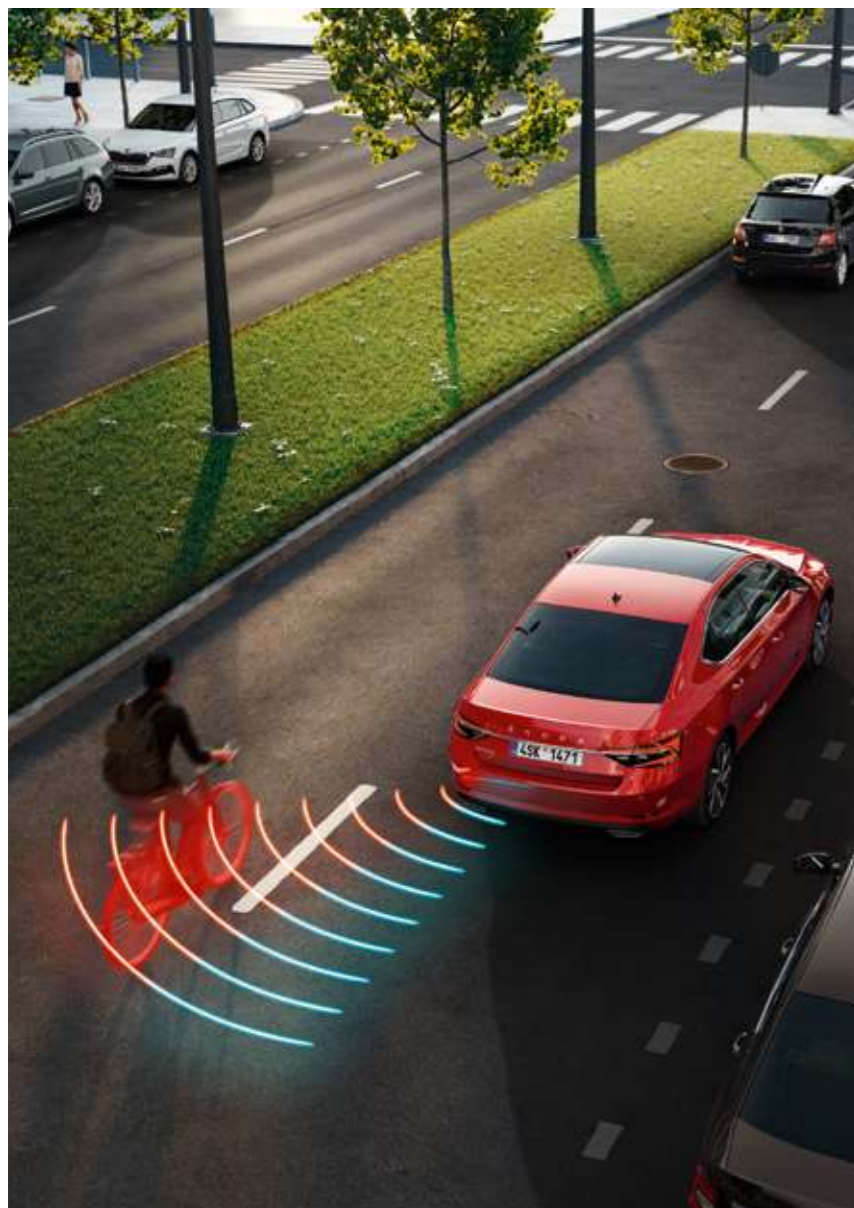


ADAPTIVE CRUISE CONTROL
Using a radar device in the front grille, in addition to its basic cruise control function. This assistant system maintains a safe distance from vehicles in front of you to increase driver comfort while reducing fuel consumption and CO2 emissions.

LANE ASSIST
Operating at speeds above 60 km/h, Lane Assist+ can help to keep the car in the middle of correct lane. This system can also take control of the car in the event of lane changes during roadworks.

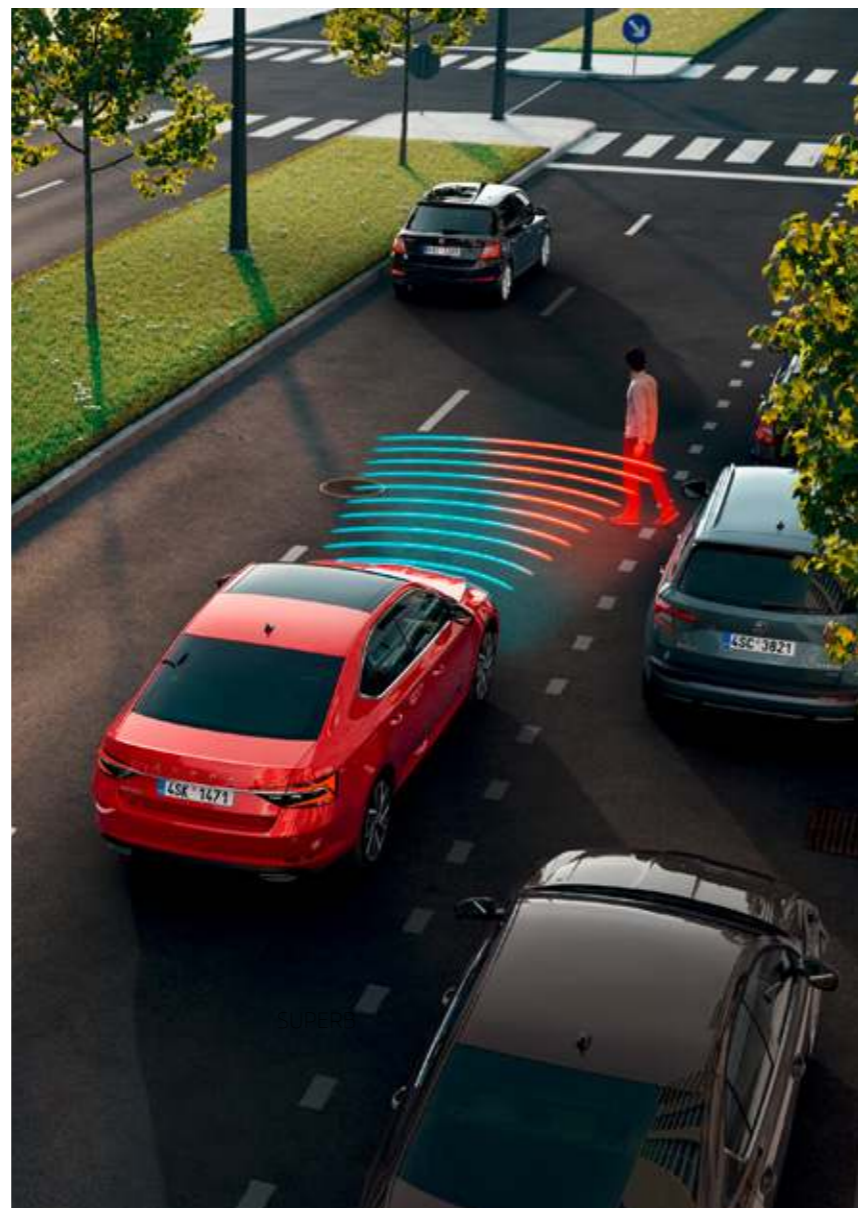


TRAFFIC JAM ASSIST / FOLLOW DRIVE
This function is designed to facilitate driving in traffic jams. By controlling the engine brakes, and steering, it makes the vehicle pull away, brake, and turn to copy the movement of the surrounding vehicles (at speeds of up to 60 km/h). If lanes are not detected at speeds of up to 30 km/h, or only one lane (line) is detected at speeds of up to 60 km/h, the Follow Drive system follows the trajectory of the vehicle in front of you until lane markings are available again.



SIDE ASSIST - BLIND SPOT DETECTION

Using radar sensors in the rear bumper, Side Assist (which can detect other vehicles and harder to see objects like cyclists up to 70 m away) monitors the areas behind and beside your car. Based on the distance and speed of the surrounding vehicles, it decides whether or not it should warn the driver.

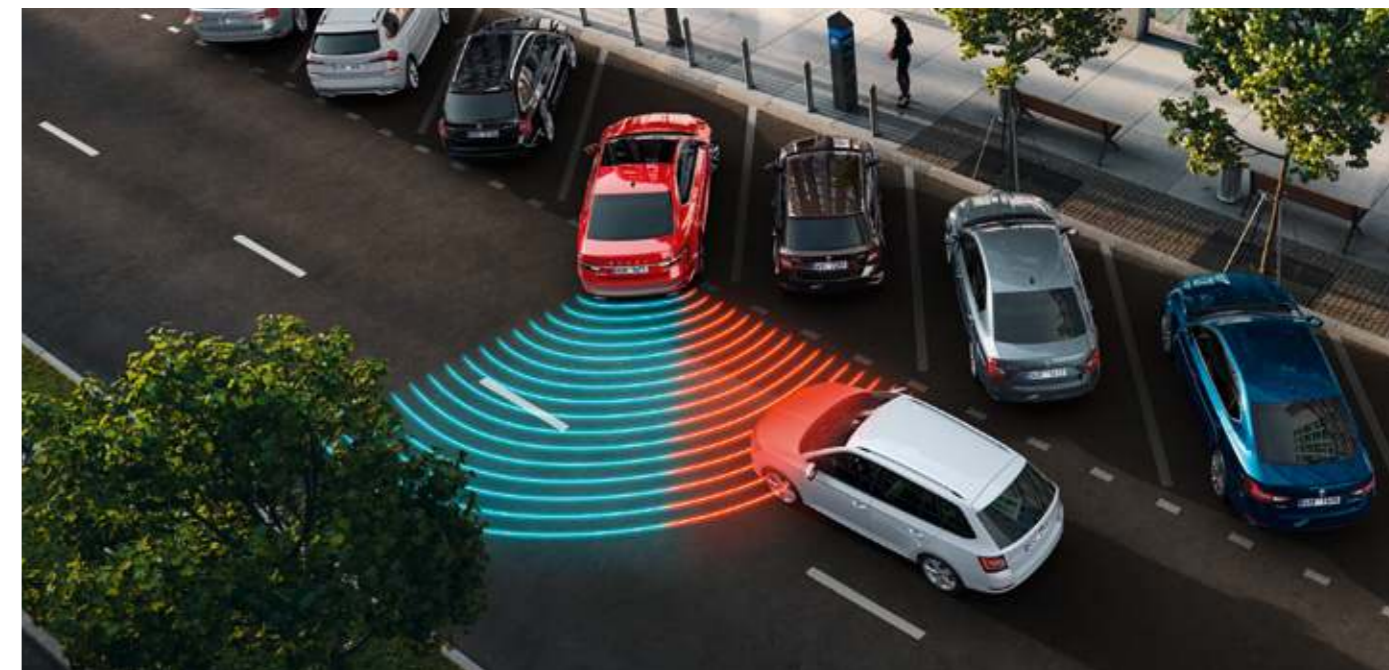


FRONT ASSIST - PREDICTIVE PEDESTRIAN

The Front Assist system, using a radar device in the front grille, is designed to monitor the distance from the vehicle ahead, including emergency braking function. The SUPERB comes with Front Assist expanded with predictive pedestrian protection, which warns the driver via an audio/visual signal as well as a gentle jolt of the brakes.

REAR TRAFFIC ALERT

The system warns the driver of rear traffic as they pull away from a row of perpendicularly parked vehicles (visually on the infotainment display/ onboard computer display or acoustically), or, if the case so requires, intervenes proactively, i.e., stops the car.



PARK ASSIST

Minimise the hassle of parking in tight spots with Park Assist. It automatically selects an appropriate parking place in a row of parallel or perpendicularly parked vehicles.

*Safety technologies are designed to assist the driver, but should not be used as a substitute for safe driving practices.

ADDITIONAL EXPERTS ON BOARD

You can encounter various things on the road. To ensure that the car is ready to handle all situations that may occur on route, additional assistants with multiple functions are on hand to help or fill in for the driver.



MATRIX BEAM FUNCTION

The full LED Matrix headlights feature matrix beam function. This allows you to use the high beams continuously, without blinding other drivers. Using a windscreen camera, the matrix beam function responds to the traffic situation and turns off only some segments of the light. Other segments are turned on and illuminate the road. The matrix beam function also uses information from the navigation system. Thanks to it, the high beams will only turn on when you are out of a built-up area.

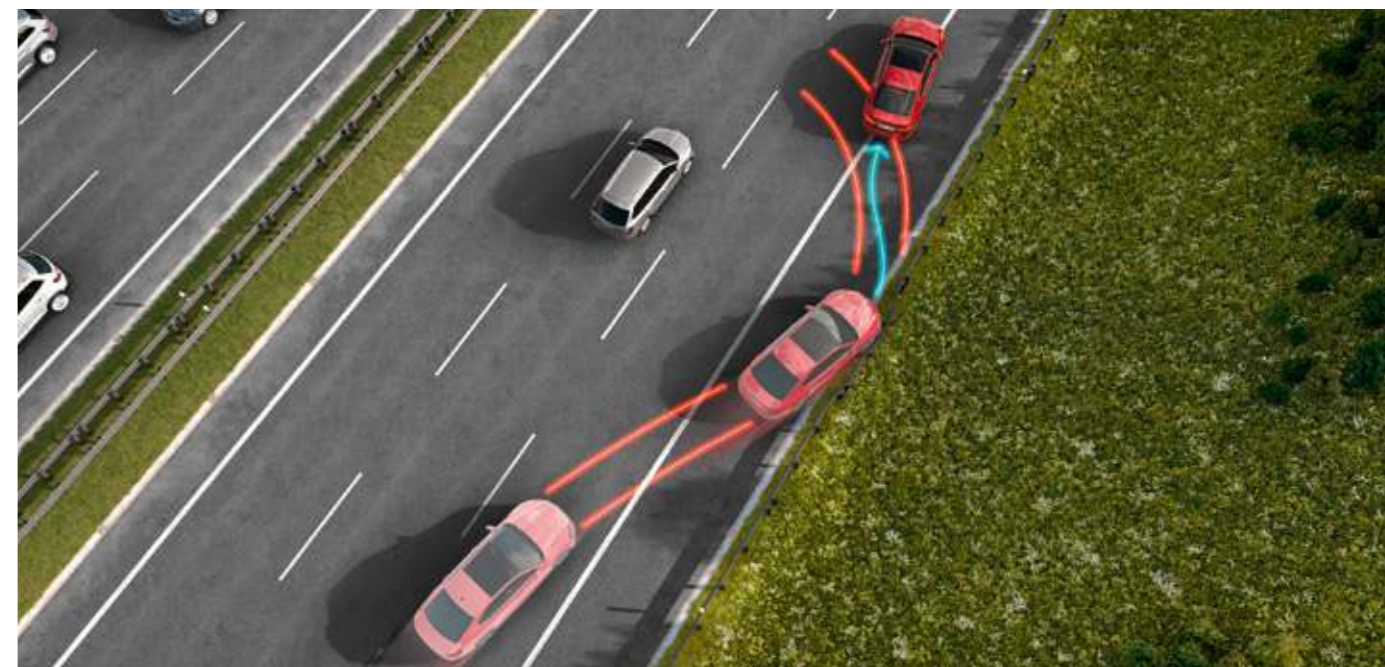
PASSENGER PROTECT ASSIST

This assistance system provides increased protection for front-seat passengers in critical situations that could lead to a crash or overturning by closing the side windows to leave only a 5 cm gap, shutting the roof window, and tightening seatbelts.



MULTI-COLLISION BRAKE

In case of an accident, the Multi-Collision Brake starts braking to prevent further uncontrolled movement of the vehicle, thus reducing the likelihood of further collisions.



A SAFE BET

In extreme situations, where the driver cannot actively influence the outcome, the car's passive elements take over – like airbags. You can have your SUPERB equipped with up to nine of them.



FRONT DRIVER AND PASSENGER AIRBAG

While the driver airbag is enclosed in the steering wheel, the passenger airbag is located in the dashboard. If needed, this can be deactivated when a child seat is installed on the front seat.

Overseas model show, local specification may vary.



ELECTRIC CHILD SAFETY LOCK

Your children's journey will be safer thanks to the electric safety lock preventing them from opening the rear windows and doors. The control is located in the driver's door.

HEAD AIRBAGS

Upon activation, head airbags create a wall, which protects the front and rear occupants against head injury.



FRONT AND REAR SIDE AIRBAGS

These four airbags protect the pelvis and chest of the driver and other passengers in the event of a side collision.



KNEE AIRBAG

The knee airbag, which protects the driver's knees and shins, is located under the steering wheel.

PERFORM MIRACLES

The engines offer outstanding comfort without compromising on performance or the environment. The impressive handling of the car can be further enhanced with progressive steering. Requiring smaller steering input by the driver results in a much more dynamic driving experience, especially around corners.



ADAPTIVE CHASSIS CONTROL WITH DRIVING MODE SELECTION

The adaptive chassis control, continuously evaluates and responds to various driving situations – braking, acceleration, turning – and adapts to the decreases in speed and steering characteristics. Using the infotainment menu, you can select one of five modes – Normal, Comfort, Eco, Sport and Individual – tailored to your specific requirements. Adaptive dampers are fitted to the suspension and can be adjusted to your preference via the different modes.

Overseas model shown for illustrative purposes only



ENGINES

Our 2-litre petrol engine on the SUPERB SPORTLINE packs a massive 206kw punch, with the SCOUT offering a just as impressive 200kw of power.



DSG AND 4X4

The combination of the automatic 6-speed (SPORTLINE) or 7-speed (SCOUT) DSG (Direct Shift Gearbox) and 4x4 drive guarantees an extraordinary driving experience.



OFF-ROAD-MODE

A mode for all conditions. With the intelligent Off-Road-Mode system, which operates at speeds of up to 30 km/h, you can handle difficult terrains. It is designed to adjust the characteristics of the engine, electronic assistants and stability control systems. These activated functions are shown on the infotainment display.

UPHOLSTERY/WHEELS

19" Vega anthracite alloy wheels are standard.



The sporty look of your car can be underlined with optional 19" Supernova black alloy wheels.



The upholstery in a combination of black Alcantara®/leather/leatherette* comes as standard.



The black perforated leather/leatherette* upholstery and ventilated front seats are optional.

*Leather appointed seat upholstery have a combination of genuine and artificial leather, but are not wholly leather. Please note that Metallic and Pearl effect paint are optional at extra cost. The print process does not allow for exact reproduction of the exterior or the upholstery colours. Please contact your ŠKODA Partner for further information on colours and upholstery combinations.

COLOURS

STEEL GREY



BUSINESS GREY METALLIC



VELVET RED METALLIC PREMIUM



MOON WHITE METALLIC



QUARTZ GREY METALLIC



RACE BLUE METALLIC



BRILLIANT SILVER METALLIC



CRYSTAL BLACK METALLIC



MAGIC BLACK METALLIC



SUPERB Sportline fitted with optional 19" Supernova black alloy wheels

SCOUT



SOMETIMES EVEN STONES JUMP FOR JOY

The SCOUT is ready for any challenge. It comes with protective exterior elements, which give the elegant SUPERB robustness and a tougher look. They also help protect the body when driving beyond paved roads.



PROTECTIVE ELEMENTS

The SCOUT version features among other things an add-on part on the front bumper in silver as well as black plastic covers on the wheel arches and door sills. The higher chassis is equipped with the rough road package, so you can go off paved roads without trepidation.



BADGE

As proof of the car's off-road ability there's a badge included on the front wings.

REAR VIEW

The rear bumper with a silver protective cover lends the car's body a tough appearance.



The image shows the front interior of a ŠKODA SCOUT. The dashboard is dark grey with a horizontal green LED light strip. The center console features a large touchscreen display showing a navigation and information menu. The steering wheel is black with the ŠKODA logo in the center and has silver accents. The instrument cluster behind the steering wheel is digital, displaying 'P' for park, '500 km' for range, and '0' for speed. The gear shift is a leather-wrapped automatic shifter. The seats are upholstered in a dark, textured fabric. The overall design is modern and functional.

HIGH-END EVEN AFTER HIGHWAYS END

While the car handles bumpy roads, you'll stay in absolute comfort inside the incredibly spacious interior, surrounded by high-quality materials and details designed exclusively for the SCOUT version. All made with ŠKODA's craftsmanship precision.



COMFORT AND FUNCTIONALITY

For your maximum comfort, the SCOUT version can be upholstered with a combination of black Alcantara® and leather/leatherette*. The electrically-adjustable driver seat with built-in memory comes as standard.

*Leather appointed seat upholstery have a combination of genuine and artificial leather, but are not wholly leather.



STYLE AND SAFETY

The multifunctional leather steering wheel, which lets you control the radio, phone and alternatively DSG, is equipped with heating function, controlled via the infotainment system.



STYLISH DETAILS

The dashboard features the original SCOUT badge and remarkable Dark Brushed décor with a decorative chrome strip. The LED ambient lighting running along the inside of the car offers ten appealing colour options.



LOGO

The SCOUT logo is embroidered on the front seat backrest.

WHEELS & UPHOLSTERY

18" Braga anthracite alloy wheels are standard.



The distinctive look of the car can be underlined with optional 19" Manaslu anthracite alloy wheels.



Black Alcantara® leather/leatherette* upholstery is standard.

*Leather appointed seat upholstery have a combination of genuine and artificial leather, but are not wholly leather.

COLOURS

TANGERINE ORANGE METALLIC



STEEL GREY



BRILLIANT SILVER METALLIC



QUARTZ GREY METALLIC



MOON WHITE METALLIC



LAVA BLUE METALLIC



MAGIC BLACK METALLIC



SUPERB MODEL EQUIPMENT	SUPERB SPORTLINE	SUPERB SCOUT
SAFETY AND SECURITY		
Front Assist with City Emergency Brake* and Pedestrian Protection	●	●
Electronic Stability Control (ESC) (incl. Hill Hold Control)	●	●
Anti-lock Braking System (ABS)	●	●
Anti-Slip Regulation (ASR)	●	●
Extended Electronic Differential Lock (XDL)	●	●
Multi-Collision Brake	●	●
Rear View Camera*	●	●
9 Airbags	●	●
- Driver and front passenger airbags	●	●
- Driver and front passenger side airbags	●	●
- Curtain airbags - front and rear	●	●
- Driver's knee airbag	●	●
- Rear side airbags	●	●
Lane Assist*	●	●
Side Assist - Blind Spot Detection*	●	●
Rear Traffic Alert*	●	●
Manoeuvre Assist - auto braking front and rear	●	●
Traffic Jam Assist	●	●
Emergency Assist	●	●
Emergency fuel supply cut-off	●	●
Automatic flashing brake lights activated in emergency braking situation	●	●
Electronic engine immobiliser	●	●
Tyre pressure monitoring system	●	●
Passenger Protect Assist	●	●
Fatigue Detection*	●	●
Height-adjustable three-point front seat belts with pretensioners; three-point rear seatbelts	●	●
Isofix child seat anchorage points, outer rear seats	●	●
Front fog lights with cornering function	●	●
Light assist (Coming Home, Leaving Home, Tunnel Light, daylight)	●	●
Rain sensor	●	●
LED daytime running lights	●	●
Alarm with interior monitoring, back-up siren, inclination sensor, keyless central locking (KESSY) and SAFE system	●	●
Activation of warning lights on impact	●	●
Warning light for seatbelts on all seats	●	●

● standard ○ option — not offered

* Safety technologies are not a substitute for the driver's responsibility of the vehicle.

SUPERB MODEL EQUIPMENT	SUPERB SPORTLINE	SUPERB SCOUT
FUNCTION AND STORAGE		
Green tech - Start/stop system and brake energy recuperation	●	●
3-spoke sport multifunctional leather steering wheel including radio and telephone controls, height and reach adjustable	●	—
2-spoke multifunctional leather steering wheel including radio and telephone controls, height and reach adjustable	—	●
DSG paddle shifters	●	●
Virtual Cockpit	●	●
Front and rear carpet mats	●	●
Sunglasses holder (only without sunroof)	●	●
Front armrest with air conditioned storage compartment	●	●
Rear armrest with cup holders and load-through provision	●	●
Front cup holders with base grip bottle opener	●	●
1.5L bottle storage compartments in front and rear door panelling	●	●
Low washer fluid level warning light	●	●
Remote release of rear seat backrest	●	●
Ticket holder on A pillar	●	●
Waste bin in door panel	●	●
Wireless phone charging	●	●
Net system in luggage compartment	●	●
Storage box with cargo elements behind both rear wheel wells	●	●
Rear wiper with wash/wipe function (Wagon only)	●	●
Preparation for tow bar	●	●
Space Saving spare wheel	●	●
Virtual Pedal - hands-free tailgate opening and closing	●	●
Foldable hooks in luggage compartment	●	●
Electric park brake with Auto Hold function	●	●
Umbrella in front door	●	●

● standard ○ option — not offered

SUPERB MODEL EQUIPMENT	SUPERB SPORTLINE	SUPERB SCOUT
COMFORT AND CONVENIENCE		
9.2" touch screen Columbus satellite navigation system	●	●
SUPERB featuring wireless Apple CarPlay® & wireless Android Auto™*	●	●
SmartLink~ smartphone kable connectivity with Apple Carplay® and Android Auto™	●	●
Performance Monitor (customisable) featuring Bar Pressure, G-Force, kW's, engine temperature and oil temperature	●	—
Lap timer	●	—
Premium German Canton sound system (10 loudspeakers, central speaker, subwoofer and digital equaliser)	●	●
Adaptive cruise control	●	●
Adaptive Chassis Control with Driving Mode Selection	●	●
Off road function – driving assistant for difficult conditions	—	●
Additional chassis protection	—	●
2 front and rear LED reading lights	●	●
Three-zone Climatronic air conditioning with humidity sensor	●	●
Front and rear heated seats	●	●
Electrically adjustable front seats with memory function	●	●
Clothes Hooks on "B" pillars	●	●
Illuminated and air conditioned glove box	●	●
Driver and passenger's side vanity mirrors in sun visor	●	●
Automatically foldable door mirrors with driver auto dimming & memory function	●	●
Internal rear view mirror with auto dimming	●	●
Advanced Keyless Entry including Smart Start (KESY) and Alarm	●	●
Tinted windows	●	●
Privacy glass (sunset)	●	●
Electric sunroof (Sedan)	○	—
Electric panoramic sunroof (Wagon)	○	○
Automatic Parking Assist*	●	●
Sun shade for rear side windows	●	●

● standard ○ option — not offered

~ SmartLink is compatible for selected apps with the latest smartphone versions of iOS and Android.

+ SUPERB featuring wireless Apple CarPlay® & wireless Android Auto™ is compatible for selected apps with the latest smartphone versions of iOS and Android, active data service required.

SUPERB MODEL EQUIPMENT	SUPERB SPORTLINE	SUPERB SCOUT
DESIGN		
Full LED headlamps with Matrix Beam function for long-distance lighting and dynamic angle	●	●
Rear full LED lights with animated indicators	●	●
ŠKODA Welcome logo	●	●
Sports seats - Leather/Alcantara upholstery, integrated head rests^	●	—
Leather/Alcantara upholstery^	—	●
Aluminium finish accelerator and brake pedals	●	●
LED interior ambient lighting	●	●
SportLine decorative front and rear door sill trims	●	—
Scout decorative front and rear door sill trims	—	●
Sportline logos	●	—
Scout logos	—	●
Chrome plated window frames	—	●
Black plated window frames	●	—
Black door mirrors	●	●
Aluminium door mirrors	—	●
Black radiator grille frame	●	●
Chrome radiator grille frame	—	●
Integrated indicators in side mirrors	●	●
VEGA anthracite alloy wheels 8Jx19"	●	—
SUPERNOVA black alloy wheels 8Jx19"	○	—
BRAGA anthracite alloy wheels 8Jx18"	—	●
MANASLU anthracite alloy wheels 8Jx19"	—	○
Rear number plate LED lights	●	●
Black ceiling trim	●	—
Silver roof rails (wagon)	—	●
Black roof rails (wagon-sportline)	●	—
Integrated chrome-tipped exhaust	●	—
Invisible exhaust tailpipes	—	●
Black rear diffuser with chrome tipped-exhausts	●	—
Black rear spoiler - sedan (Wagon in body colour)	●	—
Black insert line in lower grille	●	—
Chrome insert line in lower grille	—	●
Bumpers painted in body colour	—	●

● standard ○ option — not offered A available in optional package

^Leather appointed seat upholstery have a combination of genuine and artificial leather, but are not wholly leather.

* Safety technologies are not a substitute for the driver's responsibility of the vehicle.

SUPERB TECHNICAL SPECIFICATIONS	206TSI DSG 4X4 SPORTLINE SEDAN (WAGON)	200TSI DSG 4X4 SCOUT
ENGINE	Turbocharged petrol engine	Turbocharged petrol engine
Cylinders/Displacement (cm ³)	4/1984	4/1984
Max. engine performance/revs (kW at rpm)	206/6500	200/6500
Max. torque/revs (Nm at rpm)	350/1700-5600	350/2000-5400
Fuel quality	Unleaded Petrol min RON 95	Unleaded Petrol min RON 95
PERFORMANCE‡		
Maximum speed (km/h)	250	250
Acceleration 0-100km/h	6.0 (6.1)	5.7
CONSUMPTION (1/100KM) (ADR 81/02)**		
- combined	8.0 (8.1)	7.1
- urban	9.8	9.0
- extra urban	6.9 (7.0)	6.0
CO₂ EMISSIONS		
- combined	182 (183)	161
TRANSMISSION		
Driven wheels	4x4	4x4
Clutch	Two coaxial wet multiple-disk clutch, electro-hydraulically operated	Two coaxial wet multiple-disk clutch, electro-hydraulically operated
Transmission	6-Speed DSG	7-Speed DSG
WEIGHT		
Tare Mass (kg)	1580 (1615)	1638
Max. roof load (kg)	100	100
Max. trailer load w/o brakes	750	750
Max. trailer load with brakes (kg)	2200	2200
Max. downball weight (kg)	90	90
BODY		
Drag coefficient C _d	0.299 (0.322)	0.318

SUPERB TECHNICAL SPECIFICATIONS	206TSI DSG 4X4 SPORTLINE SEDAN (WAGON)	200TSI DSG 4X4 SCOUT
CHASSIS		
Front axle	MacPherson suspension with lower triangular links and torsion stabiliser	
Rear axle	Multi-element axle, with one longitudinal and three transverse links, with torsion stabil	
Braking system	Hydraulic dual-diagonal circuit braking system, electromechanical servo assisted	
Brake - front	Disc brakes with inner cooling, with single/piston floating caliper	
Brake - rear	Disc brakes with inner cooling	
Steering system	Direct rack-and-pinion steering with electro mechanic power steering	
Turning circle (m)	11.7	11.7
Wheels	8Jx19"	8.5Jx19" / 8Jx19"
Tyres	235/40 R19	235/45 R18 / 235/40 R19
TANK CAPACITY		
Litres	66	66
OUTSIDE DIMENSIONS		
Length (mm)	4869 (4862)	4863
Width (mm)	1864	1864
Wheelbase (mm)	2840	2838
Running clearance (mm)	136	151
Track front/rear (mm)	1578/1566	1581/1565 / 1575/1595
INSIDE DIMENSIONS		
Width - front/rear	1507/1520	1507/1519
Headroom - front/rear	1038/980 (1042/1000)	1042/1000
STORAGE CAPACITY		
with rear seats upright (l)	625 (660)	660
with rear seats down (l)	1760 (1950)	1950



‡Please note figures are sourced from overseas data where equipment levels by model variant may vary.

**Fuel consumption figures according to Australia Design Rule (ADR) 81/02 derived from laboratory testing. Factors including but not limited to driving style, road and traffic conditions, environmental influences, vehicle condition, and accessories fitted, will in practice in the real world lead to figures, which generally differ, from those advertised. Advertised figures are meant for comparison amongst vehicles only.

WELCOME TO CARE-FREE OWNERSHIP

ŠKODA Care is about making sure that same level of attention to detail remains long after you've made your purchase, making owning a ŠKODA as fantastic as buying one.



5 YEAR WARRANTY[^] UNLIMITED KMS

After getting behind the wheel of a ŠKODA, it's not hard to see why they're so beloved by their owners. Quite simply, ŠKODA vehicles are made to be driven and we want to keep your journey a long and happy one. And the way it works is simple. ŠKODA Australia provides a 5 Year/Unlimited Kilometre Warranty[^] on all new vehicles. Every new ŠKODA vehicle includes one year ŠKODA Assist[±] (Roadside Assistance), from the warranty start date. The roadside assistance will subsequently be renewed on an annual basis for the second, third, fourth and fifth years, if the vehicle is returned to an authorised ŠKODA dealer for scheduled maintenance (as per the ŠKODA service program) up to a maximum of five years.



ŠKODA Service Pricing

Buying a car is one thing, but owning a car is something else entirely. We're sure you'll want to know the costs of any service before you book it in. The cogs in our heads have been turning and we've come up with a solution we think is pretty clever. Our handy online service calculator can help you find the cost of your next service, scheduled to occur every 12 months/15,000 kms (whichever occurs first)*. No hidden expenses, no nasty surprises.



Genuine Parts

You don't have to be a genius (AKA a ŠKODA technician) to know that non-genuine parts aren't as good as using genuine ones. Our philosophy towards fixing your car is simple; the parts we use are identical to the parts used in the production of your car originally. Genuinely. And with a nationwide, two year, unlimited kilometre warranty on all genuine parts, peace of mind comes easily too. Exclusions apply, please visit skoda.com.au.



Service Packs

Why worry about handling the payment of your services on an ad-hoc basis when you already know you need to get them annually? Conveniently, you can save time by pre-paying your servicing with a 3 Year/45 000km (whichever occurs first) or a 5 year/75 000km (whichever occurs first) ŠKODA Service Pack[†] at any of our ŠKODA dealers. That way you can simply book a service time that suits you, and the costs are already covered. Your car, serviced at your convenience.

[^]Conditions and exclusions apply, see www.skoda.com.au/owners/warranty. Your rights under this warranty are provided in addition to, and in some cases overlap with, consumer guarantees under the Australian Consumer Law and do not limit or replace them. [±]ŠKODA Assist (roadside assistance) is provided by AWP Australia Pty Ltd ABN 52 097 227 177 trading as Allianz Global Assistance, under an arrangement with Volkswagen Group Australia Pty Limited ABN 14 093 117 876. Conditions and exclusions apply, see www.skoda.com.au/owners/roadside-assistance. *ŠKODA Service Pricing applies to the first 6 standard scheduled services of your vehicle which are scheduled to occur at every 15,000 km/12 month interval (whichever occurs first). On or before 31 December each year, ŠKODA will publish the maximum price for a specified Scheduled Service that will be applicable from, and remain fixed for, the following calendar year only. For details on pricing, items not included in the Service Price and for full terms and conditions please see www.skoda.com.au/skoda-care/service-pricing. [†]ŠKODA Service Pack are available at ŠKODA Dealers for all models and covers standard items as contained in each scheduled service interval only. Discount structure varies by model. For details of what is not included in a scheduled service, please refer to the program terms and conditions available here: www.skoda.com.au/skoda-care.

REMOVE ANY DOUBT WITH ŠKODA CHOICE.

ŠKODA Choice[±] is a flexible finance program that allows you to guarantee your vehicle's minimum future value[±] at the time of purchase, giving you peace of mind knowing the value of your ŠKODA is secured.

- ✓ Freedom to tailor your contract term and kilometre allowance to suit your lifestyle.
- ✓ Fixed interest rate for the life of your Loan with no account keeping fees.
- ✓ At the end of your ŠKODA Choice contract you can select from three simply clever options – trade-in, retain or return.
- ✓ Opportunity to upgrade your ŠKODA more often, enjoying the latest model with the best innovations and technology.

HOW IT WORKS

Step 1

Choose your favourite ŠKODA model.

Step 2

Choose your preferred term from between 12 and 48 months, along with an annual km allowance and repayment options that suit your lifestyle.

Step 3

At the end of your chosen term, select from one of the three end of term options:



Trade in

If you wish to trade-in your ŠKODA for a new vehicle, all you need to do is return it to the dealership. If the trade-in value is higher than the Guaranteed Future Value[±], you can use this equity towards your new vehicle.



Retain

If you prefer to retain your ŠKODA, simply let us know. Provided that you also meet the relevant payment obligations under your contract, you can purchase your vehicle outright for the Guaranteed Future Value amount locked in at the start of the contract[±]. Then your ŠKODA is yours to keep. Or you can choose to refinance your balloon at the end of the term.



Return

All you need to do is hand your car back and, if the vehicle meets the agreed kilometre and fair wear and tear requirements[±], you will have no more to pay.

For more information on our Guaranteed Future Value program, visit <https://www.skoda.com.au/finance/skoda-choice>

[±]ŠKODA Choice consists of an option to return your vehicle to ŠKODA Financial Services (SFS) ABN 20 097 071 460, Australian Credit Licence 389344, at the end of the term and requires SFS to purchase the vehicle at an agreed price determined by SFS, known as the Guaranteed Future Value (GFV). At the end of the term, you can elect to: (1) trade-in; (2) return; or (3) retain the vehicle by paying the GFV, which is a lump sum owed to SFS at the end of the loan term after all repayments have been made. You will be liable for any loan contract deficit and additional charges if you exceed the nominated kilometre allowance and/or the vehicle is not in an acceptable condition. Available on new and demonstrator ŠKODA vehicles for selected models. Contact your nearest ŠKODA dealer to verify eligible vehicles for this program. Fleet, government, rental buyers, hire car and chauffeur companies excluded.



Publication date: January 2021

Important Information:

Apple CarPlay® is a registered trade mark of Apple Inc. Android Auto™ is a registered trade mark of Google Inc. Bluetooth® is a registered trade mark of Bluetooth SIG Inc.

ŠKODA is distributed by Volkswagen Group Australia Pty Ltd (ABN 14 093 117 876) of 24 Muir Road Chullora, NSW 2190. Specifications are as planned at January 2021, for Model Year 2021 and are subject to change without notice or obligation. All information in this brochure are correct at the time of publication, however variations may occur from time to time and ŠKODA, in so far as it is permitted by law to do so, shall not be liable in any way as a result of any reliance by any person on anything contained in this brochure. Authorised ŠKODA dealers will provide up-to-date information on model application, design feature, prices, and availability on request.

www.skoda.com.au



[@skodaaustralia](https://www.instagram.com/skodaaustralia)



www.facebook.com/skodaaustralia

**IF YOU'VE ENJOYED READING ABOUT IT
— IMAGINE DRIVING IT**

CALL US TO ARRANGE A TEST DRIVE

SKOFABBROMY21

Your ŠKODA partner: