



2020  
ALMERA

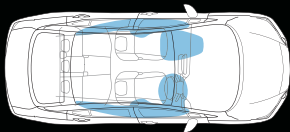


# NISSAN SAFETY AND INTELLIGENT MOBILITY TECHNOLOGIES



## SRS AIRBAG

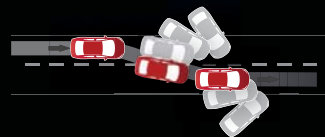
6 Points Air Bag System  
2 Front, 2 Side  
2 Curtain



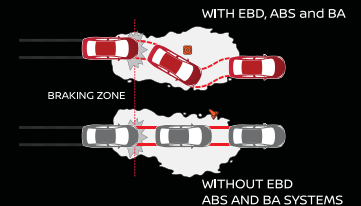
## PRETENSIONER AND LOAD LIMITER SEATBELTS



## VEHICLE DYNAMIC CONTROL (VDC)



## ABS, EBD AND BA SYSTEMS



INTELLIGENT AROUND  
VIEW MONITOR, MOVING  
OBJECT DETECTION



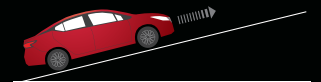
INTELLIGENT FORWARD  
COLLISION WARNING



INTELLIGENT FORWARD  
EMERGENCY BRAKING



HILL START ASSIST



# TURBOCHARGED WITH FUEL EFFICIENCY



**23.3**  
KM/PER LITER

UN ECE Reg.101 Rev.2,  
NEDC Mode, (Combined Conditions)



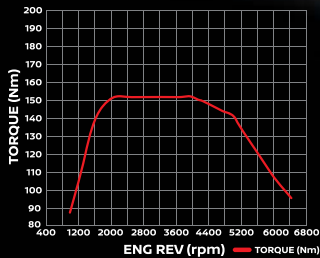
## THE NEW 1.0 LITER TURBO ENGINE

With the ever so powerful new 1.0 Liter TURBO HRAODET Engine that unleashes power at full efficiency.

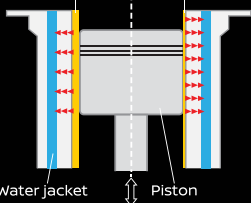
TORQUE **152Nm**

## XTRONIC CVT WITH D-STEP LOGIC

Drive it as you like it. This intelligent variable gear system helps to increase acceleration and reduces fuel consumption with D-Step Logic mode to reduce the cycle shift. Transmission is smooth, seamless and easy.



Conventional design : Mirror bore coating  
Cast iron liner ; Mirror bore coating (2mm) ; (0.2mm)



Water jacket      Piston



**LED Headlights**



**15" Alloy Wheels**  
15 x 5.5j | 195/65R15



**Full Function Rear Storage**



**Rear Diffuser**



**LED Signature Rear Lights**



**Spacious, comfortable with plenty of room to satisfy every lifestyle.**



**Advanced Drive Assist TFT Screen**



**Connectivity**

# THE ALL NEW NISSAN ALMERA

All-New NISSAN ALMERA, the ultimate vehicle that combines the most advanced technologies that will transform every definition of the urban lifestyle. All-New NISSAN ALMERA comes with a brand new sporty design that looks sleek, filled with brand new details that reveal a striking body. Spacious, set and primed with Nissan Intelligent Mobility - an intelligent technology that makes every drive safe and full of confidence. Make every journey more exciting than ever, with the new 1.0 liter Turbo engine that boasts power while reducing fuel consumption.



FEEL MORE  
**CONFIDENT**  
 INTELLIGENT DRIVING

FEEL MORE  
**EXCITED**  
 INTELLIGENT POWER

FEEL MORE  
**CONNECTED**  
 INTELLIGENT INTEGRATION

## SPECIFICATIONS

Features and Variants		ALMERA TURBO	ALMERA TURBO S
<b>ENGINE/TRANSMISSIONS</b>			
Code		HRAODET	
Displacement	cc	999	
Type		Inline 3-Cylinder, DOHC 12V, Turbo	
Bore and Stroke	mm	72.2 x 81.3	
Maximum Power	hp / rpm	100	
Maximum Torque	Nm / rpm	152	
Fuel	L	35	
Fuel System		Fuel Injection	
Transmission Type		Xtronic CVT with D-Step Logic	
<b>SUSPENSION/CHASSIS</b>			
Suspension	Front / Rear	Independent MacPherson Struts with Stabilizer / Torsion Beam with Stabilizer	
Brakes	Front / Rear	Ventilated Disc / Drum	
Wheels		195/65R15 Steel Wheels	195/65R15 Alloy Wheel*
<b>DIMENSIONS/WEIGHT</b>			
Dimensions (L x W x H)	mm	4495 x 1740 x 1460	
Wheelbase	mm	2620	
Ground Clearance	mm	135	
Curb Weight	kg	1070	
Tread	Front / Rear mm	1525 / 1535	
Gross Vehicle Weight	kg	1475	
Seating Capacity	Persons	5-Seater	
<b>STEERING SYSTEM</b>			
Type		Rack and Pinion with Electric Power Steering (EPS)	
Turning Radius	m	5.2	
<b>SAFETY SECURITY</b>			
SRS Air bags		2 Airbags	6 Airbags
Anti-Lock Braking System (ABS)		Equipped	
Brake Assist (BA)		Equipped	
Electronic Brake Force Distribution (EBD)		Equipped	
Vehicle Dynamic Control (VDC)		Equipped	
Seat belt	Front / 2nd Row	3pt. Emergency Locking Retractor with Double pretensioner and Load Limiter / 3pt. ELR x3 isofix Equipped only in the 2nd row.	
High Mount Stop Lamp		Equipped	
Hill Start Assist		Equipped	

## SPECIFICATIONS

### Features and Variants

### ALMERA TURBO

### ALMERA TURBO S

Around View Monitor		Not Equipped	Equipped
Moving Object Detection		Not Equipped	Equipped
Forward Emergency Braking		Not Equipped	Equipped
Forward Collision Warning		Not Equipped	Equipped
Anti Theft System		Immobilizer with Alarm	

### EXTERIOR

Headlamp		Halogen	LED
Daytime Running Lights (DRL)		Not Equipped	Equipped
Outside Door Mirror		Body Colour with Power Adjust Functions	Body Colour with Side Turn Lamp, Integrated Camera, Power Fold and Power Adjust Functions
Outside Door Handles	Front / Rear	Body Colour	Body Colour with Intelligent Key Switch
Wiper		Manual Variable Intermittent and Mist Wipe	
Rear Lamps		LED	

### INTERIOR

Seats	Driver	6-Way Manual Adjust (Slide + Reclining + Lifter)	
	Front Passenger	4-Way Manual Adjust (Slide + Reclining) with Seat Back Pockets	
	2nd Row	Bench Seat (Fixed Type)	
	Material	Black Cloth	Black Cloth with Grey Trim
Front Centre Armrest with Storage		Not Equipped	Equipped
Steering Wheel		Urethane	Urethane with audio, handsfree, voice recognition and meter adjust switches
Instrument Meter		Analog	Tachometer with Semi TFT Display
Inside Door Handle		Resin	Chrome
Sun Visor	Driver / Passenger	Single Visor with Vanity Mirror and Strap for Cards / Single Visor with Vanity Mirror	
Room Lamp		Equipped	
Cup/Bottle Holder		Equipped	
Accessory Socket		12V Power Outlet x2	12V Power Outlet x1 + USB x2

### FUNCTION

Power Window	Front / Rear	Front: Driver Power Window with One Touch Auto Up/Down Rear: Equipped	
Power Door Lock		Equipped	
Keyless Entry System		Equipped with Remote Key	Equipped with Intelligent Key (passive Entry)
Engine Push Start Stop		Not Equipped	Equipped
Air-Conditioning System		Manual Air Conditioning	Auto Air Conditioning
Idling Stop System		Equipped	

# BODY COLOURS AND INTERIOR MATERIAL

## BODY COLOURS



Radiant Red



Monarch Orange



Black Star



Storm White



Gun Metallic



Brilliant Silver

## INTERIOR

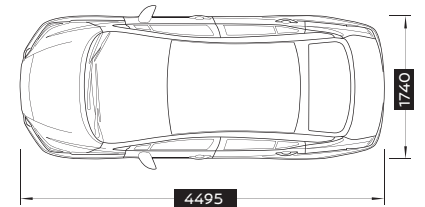
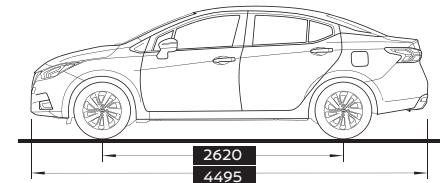
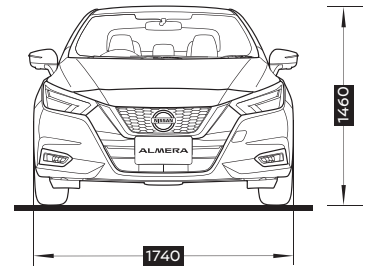


Black Cloth  
With Grey Trim



Black Cloth

## DIMENSION



3-year / 100,000-kilometer limited warranty—This Basic Coverage warranty covers the repairs needed to correct defects in materials or workmanship of parts original to the Nissan vehicle within 3 years or 100,000 kilometer, whichever comes first.