

**2010** | **ESCAPE** AND  
**ESCAPE HYBRID**



Drive one.

FUEL-SIPPING, FUN-LOVING,  
**ADVENTURE SEEKERS.**



The 2010 Ford Escape and Escape Hybrid are your tickets to fun — anytime and anywhere. When properly equipped, Escape tows up to 1588 kg (3500 lbs.).<sup>2</sup> Taking fuel efficiency to extremes, Escape Hybrid FWD delivers up to 5.8L/100 km (49 mpg) city and 6.5L/100 km (43 mpg) hwy.<sup>1</sup> Equipped with the 2.5L engine and 6-speed automatic transmission, Escape FWD gives you 9.4L/100 km (30 mpg) city and 7.0L/100 km (40 mpg) hwy.<sup>1</sup> Both models offer the capability of available Intelligent 4WD, plus tons of smart new technology like our available voice-activated Ford SYNC<sup>®</sup> with new 911 Assist,<sup>™</sup> and the available Active Park Assist system that helps you conquer parallel parking. Every road leads to exciting new adventures in Escape.



**Drive one.**

ESCAPE

ESCAPE HYBRID

**7.0L**

PER 100 KM HWY.  
(40 mpg)<sup>1</sup>

**5.8L**

PER 100 KM CITY  
(49 mpg)<sup>1</sup>

Escape Limited in Black with available equipment.

<sup>1</sup>Fuel consumption ratings based on Transport Canada approved test methods. Actual consumption may vary. See specifications for details.

<sup>2</sup>When properly equipped with Class II Trailer Tow Prep Package. Maximum trailer towing capability will vary based on passenger and cargo loads, and optional equipment installed on the vehicle. See your Ford of Canada Dealer for more information.

Every Escape is naturally nimble thanks to its fully independent suspension and exceptional ground clearance. The 171-horsepower Duratec® 2.5L 4-cylinder engine delivers outstanding fuel economy: up to 7.0L/100 km hwy. (9.4 city) with the 6-speed automatic and FWD; 7.2L/100 km hwy. (9.2 city) with the 5-speed manual and FWD. Our industry-first Easy Fuel™ capless fuel filler, standard on every Escape, automatically seals shut when you remove the fuel nozzle. No cap — just gas up and go.



#### **V6 FLEXIBILITY**

The available V6 is now Flex Fuel capable, so it runs on gasoline, E85 (85% ethanol and 15% gasoline), or any blend of the two. It yields 240 horsepower and a 1588-kg (3500-lb.) maximum towing capacity.



#### **4WD TENACITY**

Always on and always working: the available Intelligent 4WD System monitors traction 200 times per second and adjusts torque distribution as needed for maximum grip.

**CAPABLE**  
**OF GETTING YOU OUT THERE.**



Escape XLT in Ingot Silver Metallic with available equipment.

# CONFIDENT

## PARALLEL PARKING AND BEYOND.



You just pull Escape alongside a potential spot, and press a button to enable the available Active Park Assist system. It takes some measurements and prompts you when it's ready to park. You simply follow its instructions, shift the transmission, and operate the gas and brake pedals — while it automatically steers into the spot. New for 2010, this remarkable system is available on Limited and the new Hybrid Limited. It's bound to be your new best friend.



### HELPS YOU BACK UP

The available new Rear View Camera displays a full-colour image from a liftgate-mounted camera on the available Navigation System's 6.5-in. LCD screen (when equipped) or on your rearview mirror.



### POSITIVELY HABIT FORMING

The available new MyKey™ owner controls feature is an industry-first, Ford exclusive. It lets you program ignition keys with specific parameters to help encourage smart driving habits, such as buckling up and travelling at appropriate speeds.

TECHNOLOGY THAT KEEPS YOU  
**CONNECTED.**

**SYNC**  
Powered by **Microsoft**

**SIRIUS**  
SATELLITE RADIO

Standard SIRIUS® Satellite Radio<sup>1</sup> comes with a 6-month prepaid subscription. Surf up to 120 channels including 100% commercial-free music, plus the best sports, news, talk and entertainment, all across Canada. The available Ford SYNC® voice-activated, in-vehicle communications and entertainment system features new 911 Assist,<sup>2</sup> which can directly contact a 911 operator if any airbag has deployed.<sup>2</sup> SYNC integrates your Bluetooth®-enabled mobile phone and nearly any portable digital media player.<sup>3</sup> Visit SyncMyRide.ca for details. You talk. SYNC listens.<sup>TM</sup>



#### **LEADS THE WAY AND MORE**

Displayed on a bright 6.5-in. LCD touch screen, the available Navigation System features easy voice activation for everything from driving directions to accessing tunes. It also provides nearly 10 gigabytes of storage space for photos and music (up to 2400 songs). You can even use it to watch DVDs when Escape is in Park.

<sup>1</sup>See your Ford of Canada Dealer or contact SIRIUS at 1-888-539-7474 for more information.

<sup>2</sup>The vehicle's electrical system (including the battery), the wireless service provider's signal, and a connected mobile phone must all be available and operating for 911 Assist to function properly. These systems may become damaged in a crash. The paired mobile phone must be turned on, connected to SYNC, and the 911 Assist feature enabled in order for 911 to be dialed.

<sup>3</sup>Some mobile phones and some digital media players may not be fully compatible. Visit SyncMyRide.ca for full connectivity details. Driving while distracted can result in loss of vehicle control. Only use mobile phones and other devices, even with voice commands, when it is safe to do so.

It's the ultimate statement of streetwise style: the new Sport Appearance Package, available exclusively on Escape XLT in Ingot Silver Metallic, Sangria Red Metallic or Black. This eye-catching Escape is dressed to impress, starting up front with a high-gloss Black grille and lower front appliqué framed by headlamps featuring a unique Blacked-out treatment. On the sides, body-colour door handles and rocker mouldings are accented by the high-gloss Black sideview mirrors and liftgate spoiler. All-season black-sidewall tires and 17-in. premium Black wheels with a machined-finish perimeter ring transfer power to the pavement with attitude.



#### **SHINES IN BLACK**

The dramatic Sport Appearance Package interior features Charcoal Black cloth seating surrounded by a Charcoal Black environment. The instrument cluster, centre console and doors are accented with a high-gloss Black finish, while the door handles, air vents and shifter knob each get a touch of chrome finish.



**DESIGNED TO BE NOTICED:  
XLT SPORT.**

# SUPPORTIVE IN ALL THE RIGHT PLACES.



Escape's comfort-designed seats easily accommodate as many as 5 adults. Supple leather-trimmed seating and heated front seats are standard on Limited and the new Hybrid Limited. The driver and front passenger can select independent settings with the available Dual-zone Electronic Automatic Temperature Control. Even your changing moods are supported by the available Ambient Lighting, which illuminates the front and rear footwells and front cupholders in your choice of 7 hues from red hot to cool blue.



## CLEARs FROST AND ICE

Every Escape comes equipped with heated sideview mirrors that improve visibility at the touch of a button. The integrated Blind Spot Mirrors (late availability) are especially helpful when changing lanes, parallel parking or backing up with a trailer.



## OPENS YOUR OUTLOOK

A power moonroof with sunshade and mini-overhead console is standard on Limited and Hybrid Limited.

As you embark upon each new activity, your cargo needs change. Escape is built to keep up with the action. With the 60/40 split rear seats folded flat, you can carry up to 1903 litres (67.2 cu. ft.)<sup>1</sup> of cargo. Have rear-seat passengers? You still get to fill 889 litres (31.4 cu. ft.)<sup>1</sup> of space behind them. Smaller items, such as a laptop or purse, can be stowed in the hidden storage area inside the front floor console.

<sup>1</sup>Escape XLT capacities listed. Actual capacities vary by model. Passenger and cargo capacity limited by weight and weight distribution.



#### POWERS YOUR GEAR

Escape Hybrid is uniquely equipped for your adventures with its 110-volt power outlet.<sup>2</sup> Use it for your laptop, a radio, or even a small TV.

<sup>2</sup>See your Owner's Guide for complete details.



#### HANDLES THE DIRTY WORK

This hidden, lockable wet trunk is paired with a retractable cargo area cover. You'll find both in the Rear Cargo Convenience Group that's standard on Limited and available on XLT.



**PREPARED  
TO MEET YOUR NEEDS.**

Escape Hybrid Limited in Stone with available equipment.

# LEADING THE (RE)CHARGE: ESCAPE HYBRID.



## ESCAPE HYBRID

**5.8L**  
PER 100 KM CITY  
(49 mpg)<sup>1</sup>

<sup>1</sup>5.8L/100 km (49 mpg) city and 6.5L/100 km (43 mpg) hwy. on Escape Hybrid FWD. Fuel consumption ratings based on Transport Canada approved test methods. Actual consumption may vary. See specifications for details.

Escape Hybrid's powertrain is so self-sufficient, it actually recharges itself. The 2.5L 4-cylinder engine works with the electric traction motor to move you with 177 net hp. When you apply the brakes, the Regenerative Braking System captures kinetic energy to recharge the 330-volt battery pack. The battery pack supplies energy to start the engine and to drive in 100% electric mode up to 64 km/h (40 mph), during which it produces near-zero tailpipe emissions.<sup>2</sup>

<sup>2</sup>When operating in Electric Drive mode.



## TRACKS PERFORMANCE

On Hybrid models, the optional Navigation System includes a Hybrid Energy Flow monitor that displays the powertrain's modes of operation and overall fuel efficiency.

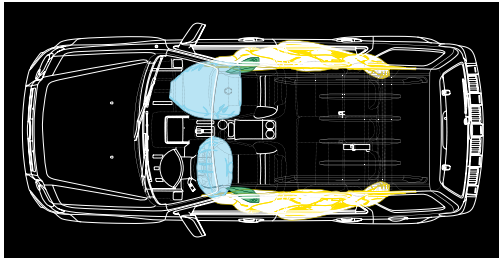


## REDUCES WASTE

The use of environmentally friendly, soy-based foam in seat cushions helps conserve limited resources and reduce CO<sub>2</sub> emissions. Escape XLT and Hybrid get sustainable premium cloth-trimmed seats made with 100% post-industrial materials — recycled plastics and polyester fibers that would otherwise have ended up in landfills.

Every one of our innovative safety systems — including AdvanceTrac® with RSC® (Roll Stability Control™) — is standard equipment on every Escape and Escape Hybrid. AdvanceTrac with RSC is the only brake-based electronic stability control system to utilize a roll-rate sensor, monitoring the vehicle's roll motion at least 100 times per second. It works in conjunction with the Anti-lock Brake System (ABS), traction control and yaw control, to automatically react and help keep all 4 wheels firmly planted.<sup>1</sup> The Personal Safety System™ enhances protection for the driver and front passenger in the event of certain frontal collisions, while the Safety Canopy® System enhances protection for both rows of outboard-seated occupants in the event of certain side-impact collisions.

<sup>1</sup>Remember that even advanced technology cannot overcome the laws of physics. It's always possible to lose control of a vehicle due to inappropriate driver input for the conditions.



#### **6 AIRBAGS — STANDARD**

Your protection is enhanced by:

- 2 front airbags (Personal Safety System)
- 2 front-seat side airbags
- 2 side-curtain airbags (Safety Canopy System)

# SAFETY IS STANDARD FOR YOUR PEACE OF MIND.



Escape XLT in Sterling Grey Metallic with available equipment.

# SPECIFICATIONS

## Standard Equipment

### Mechanical

4-wheel independent suspension
Electric Power Steering (EPS)
Fuel tank — 62.4-litre capacity; 56.8-litre capacity (Hybrid)
Power front disc/rear drum brakes with Anti-lock Brake System (ABS)
Stabilizer bar — Front
Unibody construction

### Safety/Security

Personal Safety System™ for driver and front passenger — Includes dual-stage front airbags <sup>1</sup> , safety belt pretensioners, safety belt energy-management retractors, safety belt usage sensors, driver-seat position sensor, crash severity sensor, restraint control module and Front-Passenger Sensing System
3-point safety belt restraint system for all seating positions
Adjustable head restraints at all seating positions
AdvanceTrac® with RSC® (Roll Stability Control™)
Battery saver with headlamps-off delay
Belt-Minder® front safety belt reminder
Brake/shift interlock with automatic transmission
Front-seat side airbags <sup>1</sup>
Fuel pump inertia shutoff switch
Headlamps-on alert chime
Height-adjustable shoulder safety belts — Front
Key-in-ignition alert chime
LATCH — Lower anchors and tether anchors for child-safety seats (rear-outboard positions)
Safety Canopy® System with side-curtain airbags <sup>1</sup> and rollover sensor
SecuriCode™ keyless-entry keypad with integrated key transmitter remotes (2)
SecuriLock® passive anti-theft engine immobilizer system
Side-intrusion door beams
Tire Pressure Monitoring System (excludes spare)

### Interior

60/40 split-folding rear seat with tip-fold-flat latches
Accessory delay
Air conditioning
Auxiliary audio input jack
Cruise control
Driver and front-passenger seatback map pockets
Floor console — Storage bin with removable interior bin and 4 cupholders
Floor mats — Front and rear colour-keyed carpeted
Glove compartment
Illuminated-entry system
Power door locks with child-safety rear door locks
Power points (2) — 1 in each row
Power windows — With one-touch-down driver-window feature
Rear floor heat ducts
SIRIUS Satellite Radio with 6-month prepaid subscription
Tachometer
Tilt steering wheel
Visor vanity mirrors

### Exterior

Automatic headlamps
Easy Fuel™ capless fuel filler
Fog lamps
Liftgate with flip-up glass
Privacy glass (rear doors, quarter windows and rear window)
Rear-window defroster
Roof-rack side rails — Black (with chrome inserts on Limited)
Sideview mirrors — Power, heated with manual-fold feature and integrated Blind Spot Mirrors (late availability)
Solar-tinted glass
Windshield wipers — Front: variable-intermittent with washer; rear: 2-speed with washer

## Features & Options

	XLT MANUAL — FWD	XLT — FWD or 4WD	LIMITED — 4WD	HYBRID — FWD or 4WD	HYBRID LIMITED — FWD or 4WD
<b>Mechanical</b>					
● ● ● — — Duratec® 25-2.5L I-4 engine					
— ○ ○ — — Duratec 30-3.0L V6 FFV engine					
— — — ● ● 2.5L I-4 Atkinson-cycle engine with Permanent-Magnet AC-synchronous electric motor					
— — — ● ● Electronically controlled Continuously Variable Transmission (eCVT)					
— — — ● ● 330-volt sealed nickel-metal-hydride (NiMH) battery					
— — — ● ● Regenerative Braking System					
● — — — — 5-speed manual transmission					
— ● ● — — 6-speed automatic transmission					
● ● — — — 16-in. cast-aluminum wheels					
— — ● — — 16-in. bright machined-aluminum wheels					
— — — ● ● 16-in. unique cast-aluminum wheels					
— ○ ○ — — 17-in. chrome-clad aluminum wheels					
— — ● ● ● P235/70R16 all-season BSW tires					
● ● — — — P235/70R16 all-season OWL tires					
— ○ ○ — — P225/65R17 all-season BSW tires					
<b>Seating</b>					
● ● — ● — Cloth trim — 1st-row bucket seats with 6-way power driver seat					
Ⓛ Ⓛ ● — ● Leather trim — 1st-row heated bucket seats with 6-way power driver seat					
<b>Interior</b>					
● ● — ● — AM/FM stereo/single-CD player with MP3 capability, clock and 4 speakers					
○ ○ ● ○ ● Premium Sound System with AM/FM stereo/single-CD player, MP3 capability, clock, 7 speakers (including an 8-in. subwoofer) and 320 watts					
— — ● ● ● Air conditioning — Dual-zone Electronic Automatic Temperature Control					
— ○ ● — ● Ambient Lighting					
Ⓛ Ⓛ ● — ● Auto-dimming rearview mirror					
Ⓛ Ⓛ ● — ● Cargo area cover — Retractable					
— — ● — — Chrome accents — Interior door handles, register bezels and shifter bezel					
Ⓛ Ⓛ ● — — Compass and outside temperature displays					
○ ○ ● ○ ● Ford SYNC® voice-activated, in-vehicle communications and entertainment system					
— — ● ● ● MyKey™ owner controls feature					
○ ○ ○ ○ ○ Navigation System — DVD-based, includes Premium Sound System					
Ⓛ Ⓛ ● — — Overhead console					
— — ○ — ● Rear View Camera					
Ⓛ Ⓛ ● ● ● Steering wheel — Leather-wrapped (colour-keyed on Limited)					
— — ● — ● Universal Garage Door Opener					
Ⓛ Ⓛ ● ● ● Visor vanity mirrors — Illuminated					

	XLT MANUAL — FWD	XLT — FWD or 4WD	LIMITED — 4WD	HYBRID — FWD or 4WD	HYBRID LIMITED — FWD or 4WD
<b>Exterior</b>					
— — ○ — ○ Active Park Assist					
● ● — — — Grille — Chrome upper, body-colour lower					
— — ● — ● Grille — Chrome upper and lower					
— — — ● — Grille — Body-colour upper and lower					
— — ● — ● Liftgate garnish — Chrome					
○ ○ ● ○ ● Power moonroof with sunshade and mini-overhead console (requires Convenience Group on XLT)					
— — ● — ● Reverse Sensing System					
● ● ● ○ ● Roof-rack crossbars — Black					
○ ○ ○ ○ ○ Side step bars — Integrated					
● ● — ● — Sideview mirrors and door handles — Black moulded-in-colour					
— — ● — ● Sideview mirrors and door handles — Body-colour-painted					
<b>Packages</b>					
○ ○ — — — Canadian Winter Package — Includes heated front seats and Leather Comfort Group					
○ ○ ● — — Convenience Group — Includes dual illuminated visor vanity mirrors, compass and outside temperature displays, auto-dimming rearview mirror, message centre, MyKey owner controls feature and overhead console					
○ ○ ● — — Rear Cargo Convenience Group — Includes retractable cargo area cover and lockable wet trunk					
Ⓛ Ⓛ ● — ● Leather Comfort Group — Includes leather-trimmed seats with 6-way power driver seat and leather-wrapped steering wheel					
— ○ — — — Sport Appearance Package — Includes painted high-gloss Black grille and lower front appliqué; blacked-out headlamp treatment; 17-in. premium Black wheels with machined-finish perimeter ring, mounted on P255/65R17 all-season BSW tires; gloss Black sideview mirrors and liftgate spoiler; body-colour door handles and rocker mouldings; Charcoal Black cloth seats; Black interior finish appliqué; chrome interior trim on door handles, air vent trim rings and shifter knob insert					
— ○ ○ — — Trailer Tow Prep Package — Includes Class II 1588-kg (3500-lb.) receiver and trailer wiring harness with 4-pin connector (V6 only)					

● Standard Ⓛ Select Availability ○ Optional — Not Available

<sup>1</sup>Always wear your safety belt and secure children in the rear seat.

<sup>2</sup>SIRIUS, the SIRIUS dog logo, channel names and logos are trademarks of SIRIUS XM Radio Inc. Subscriptions governed by SIRIUS Terms and Conditions at [siriuscanada.ca](http://siriuscanada.ca).

Microsoft is a registered trademark of Microsoft Corporation.

The Bluetooth word mark is a trademark of the Bluetooth SIG, Inc.

# SPECIFICATIONS

## Model-Specific Features

### XLT

#### Select standard content:

Black roof-rack side rails with crossbars • 16-in. cast-aluminum wheels • Chrome upper grille, body-colour lower • Black exterior door handles and sideview mirrors • SecuriCode™ keyless-entry keypad • SecuriLock passive anti-theft engine immobilizer system • AM/FM stereo/single-CD player with MP3 capability • Ghin Rime-trimmed centre stack • Sustainable cloth seats with 6-way power driver seat

### Limited

#### Includes XLT content, plus:

Intelligent 4WD System • 16-in. bright machined-aluminum wheels • Chrome upper and lower grilles, liftgate garnish and roof-rail inserts • Body-colour door handles and sideview mirrors • Power moonroof • Reverse Sensing System • Premium Sound System with AM/FM stereo/single-CD player, MP3 capability and 7 speakers • Ford SYNC • Leather-trimmed seats with heated front seats • Leather-wrapped steering wheel with cruise and secondary audio controls • Dual-zone Electronic Automatic Temperature Control • Ebony Black-trimmed centre stack • Chrome interior door handles, register bezels and shifter bezel • Auto-dimming rearview mirror • Illuminated visor vanity mirrors • Ambient Lighting • Universal Garage Door Opener • Cargo area cover

### HYBRID

#### Includes XLT content, plus some equipment exclusive to Hybrid:

2.5L I-4 Atkinson-cycle engine • 330-volt sealed nickel-metal-hydride (NiMH) battery • Regenerative Braking System • 16-in. unique cast-aluminum wheels • Body-colour upper and lower grilles • Black roof-rack side rails w/o crossbars • Dual-zone Electronic Automatic Temperature Control • 110-volt AC power outlet • Leather-wrapped steering wheel with cruise and secondary audio controls • Illuminated visor vanity mirrors

### HYBRID LIMITED

#### Includes Hybrid content, plus:

Chrome upper and lower grilles, liftgate garnish and roof-rail inserts • Body-colour door handles and sideview mirrors • Power moonroof • Reverse Sensing System • Rear View Camera • Premium Sound System • Ford SYNC • Leather-trimmed seats with heated front seats • Ebony Black-trimmed centre stack • Chrome interior door handles, register bezels and shifter bezel • Ambient Lighting • Universal Garage Door Opener • Cargo area cover

## Estimated Fuel Consumption Ratings<sup>1</sup>

L/100 km (mpg)

Engine	Transmission	FWD		4WD	
		City	Highway	City	Highway
2.5L	5-speed manual	9.2 (31)	7.2 (39)	—	—
2.5L	6-speed automatic	9.4 (30)	7.0 (40)	10.4 (27)	7.7 (37)
3.0L	6-speed automatic	10.9 (26)	8.0 (35)	11.6 (24)	8.8 (32)
Hybrid	eCVT	5.8 (49)	6.5 (43)	6.6 (43)	7.3 (39)

<sup>1</sup>Fuel consumption ratings based on Transport Canada approved test methods. Actual consumption may vary.

## Engines

Escape	Horsepower (hp @ rpm)	Torque (lb.-ft. @ rpm)	Towing Capacity <sup>2</sup> kg (lbs.)
Duratec® 25-2.5L I-4	171 @ 6000	171 @ 4500	680 (1500)
Duratec 30-3.0L V6	240 @ 6550	223 @ 4300	1588 (3500) <sup>3</sup>
Escape Hybrid			
2.5L I-4 Atkinson-cycle	153 @ 6000	136 @ 4500	—
Electric Motor	94 @ 5000	152 @ 4250	—
System Net	177	—	—

Hybrid System Net Horsepower is 177 — it is not the combination of the gas engine horsepower of 153 and the electric motor horsepower of 94, as the two systems generate horsepower at different times.

<sup>2</sup>Maximum capacity shown is for properly equipped vehicle with required equipment and a 68-kg (150-lb.) driver. Weight of additional options, equipment, passengers and cargo must be deducted from this weight. For additional information, see your Ford of Canada Dealer. <sup>3</sup>With Class II Trailer Tow Prep Package.

## Dimensions & Capacities

Exterior mm (in.)	Escape FWD/4WD	Escape Hybrid FWD/4WD
Overall length	4437 (174.7)	4437 (174.7)
Wheelbase	2619 (103.1)	2619 (103.1)
Overhang — Front	856 (33.7)	856 (33.7)
Overhang — Rear	960 (37.8)	960 (37.8)
Vehicle width (with mirrors)	2065 (81.3)	2065 (81.3)
Height (without options)	1725 (67.9)/1722 (67.8)	1720 (67.7)
Minimum running ground clearance	213 (8.4)	211 (8.3)
Liftover height	752 (29.6)/749 (29.5)	747 (29.4)/752 (29.6)
Ramp breakover angle	19.0°/18.9°	18.7°
Angle of approach	19.4°/19.3°	19.5°/19.6°
Angle of departure	28.3°	27.8°/27.7°
Interior mm (in.)		
Front		
Head room	1026 (40.4)	1026 (40.4)
Shoulder room	1438 (56.6)	1438 (56.6)
Hip room	1354 (53.3)	1354 (53.3)
Leg room (max.)	1057 (41.6)	1057 (41.6)
Rear		
Head room	996 (39.2)	996 (39.2)
Shoulder room	1420 (55.9)	1420 (55.9)
Hip room	1247 (49.1)	1247 (49.1)
Leg room (max.)	904 (35.6)	904 (35.6)
Cargo Volume <sup>4</sup> L (cu. ft.)		
Behind front row	1903 (67.2)	1880 (66.4)
Behind rear row	889 (31.4)	875 (30.9)

<sup>4</sup>May vary by model.

# WHEELS



16-in. Cast-Aluminum Standard on XLT



17-in. Premium Black with Machined-Finish Perimeter Ring Sport Appearance Package



16-in. Bright Machined-Aluminum Standard on Limited



17-in. Chrome-Clad Aluminum Optional on XLT with automatic transmission and on Limited



16-in. Unique Cast-Aluminum Standard on Hybrid and on Hybrid Limited

# ACCESSORIES

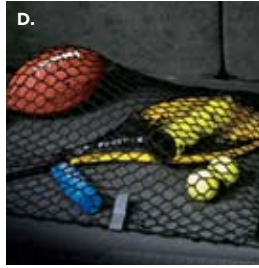
- A. Remote Start Systems
- B. Splash Guards
- C. Trailer Hitch Balls/Draw Bar
- D. Interior Cargo Net
- E. THULE® Racks, Carriers and Cargo Holders<sup>1</sup>
- F. All-Weather Floor Mats
- G. Interior Rear Cargo Shade
- H. Interior Soft Cargo Organizers (Standard and Large Sizes)

**Also available:**

- Ashcup/Coin Holder/Smoker's Pack
- Cargo-Logic® System
- Dual INVISION™ DVD Headrests<sup>1</sup>
- Electrochromic Mirror with HomeLink®
- Garmin® Portable Navigation Systems<sup>1</sup>
- Hood Deflector
- Interior Lighting Kit
- Interior Soft Cargo Cooler Bag
- Keyless Entry Keypad
- Moonroof Deflector
- Roof Crossbars
- Running Boards
- Side Window Deflectors
- Vehicle Security System
- Wheel Locks
- Wiper Shaker De-Icer and Debris Cleaner<sup>1</sup>

<sup>1</sup>Ford Licensed Accessories.

Garmin is a registered trademark of Garmin Ltd.



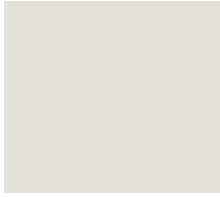
Ford of Canada warrants that its authorized Dealers will repair or replace any Genuine Ford Accessory that is properly installed by the authorized Dealer that sold the accessory and found to be defective in factory-supplied materials or workmanship. The accessory will be warranted for whichever provides you the greatest benefit: 12 months/20,000 km (whichever occurs first), or the remainder of your 36-month/60,000-km (whichever occurs first) Basic Coverage in the New Vehicle Limited Warranty. Contact your local Ford of Canada Dealer for details.

Ford Licensed Accessories (FLA) are warranted by the accessory manufacturer's limited warranty. The warranty coverage will vary by accessory manufacturer. Ford Licensed Accessories are fully designed and developed by the accessory manufacturer and have not been designed or tested to Ford engineering requirements. Contact your local Ford of Canada Dealer for details regarding the accessory manufacturer's limited warranty and/or for a copy of the FLA product limited warranty offered by the accessory manufacturer.

Ford ESP PremiumCare Plan. Depending on the Ford ESP Plan you select, some Dealer-installed Genuine Ford Accessories can be covered up to 7 years or 150,000 km. See your Ford of Canada Dealer for details.

# COLOURS

## Exterior



White Suede



Gold Leaf Metallic



Sangria Red Metallic



Kiwi Green Metallic



Steel Blue Metallic



Sport Blue Metallic



Ingot Silver Metallic



Sterling Grey Metallic



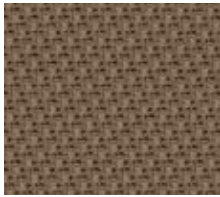
Black Pearl Slate Metallic



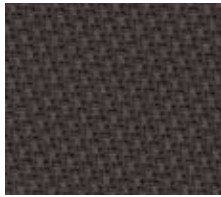
Black

Colours shown are representative only. Not all colours are available on all models. See your Ford of Canada Dealer for actual paint/trim options.

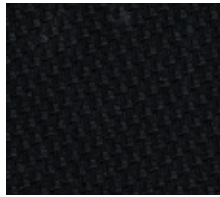
## Interior



Camel Cloth  
Standard on XLT



Greystone Cloth<sup>1</sup>  
Standard on XLT  
and on Hybrid



Charcoal Black Cloth  
Standard on XLT



Camel Leather  
Standard on Limited;  
Available on XLT



Stone Leather  
Standard on Hybrid Limited;  
Available on XLT



Charcoal Black Leather  
Standard on Limited;  
Available on XLT

Camel	
Stone	
Charcoal Black	
XLT	
● ●	White Suede
● ● ●	Gold Leaf Metallic
● ● ●	Sangria Red Metallic
● ● ●	Steel Blue Metallic
● ● ●	Sport Blue Metallic
● ● ●	Ingot Silver Metallic
● ● ●	Sterling Grey Metallic
● ● ●	Black
Sport Appearance Package	
●	Sangria Red Metallic
●	Ingot Silver Metallic
●	Black
Limited	
● ●	White Suede
● ●	Gold Leaf Metallic
● ●	Sangria Red Metallic
● ●	Steel Blue Metallic
● ●	Ingot Silver Metallic
● ●	Sterling Grey Metallic
● ●	Black
Hybrid/Hybrid Limited	
●	White Suede
●	Kiwi Green Metallic
●	Steel Blue Metallic
●	Ingot Silver Metallic
●	Black Pearl Slate Metallic
●	Black

<sup>1</sup>Stone environment.

For more information on  
Ford of Canada products and services,  
please visit our website:



### Our commitment to you... Peace-of-Mind Protection

- Basic Coverage:  
3 years/60,000 km
  - Powertrain Warranty:  
5 years/100,000 km
  - Corrosion Warranty:  
5 years/unlimited distance
  - Roadside Assistance:  
5 years/100,000 km
  - Hybrid Unique Warranty Coverage:  
8 years/160,000 km<sup>1</sup>
- Certain conditions apply. For more information on these warranties and coverages, ask your local Ford of Canada Dealer or visit [ford.ca](http://ford.ca).  
<sup>1</sup>eCVT — electronically controlled Continuously Variable Transmission, High-Voltage Battery and DC/DC converter.

### For prompt, courteous answers to your questions:

Ford Customer Relationship Centre  
1-800-565-3673  
Ford Credit Customer Service Centre  
1-877-636-7346

Please note: The electronic version of the Ford of Canada vehicle brochure is a condensed version of the original printed version.

Competitive comparisons are based on 2009 competitive models, publicly available information and Ford data at the time of printing of the 2010 original printed version. Some features discussed may be optional. Vehicles shown may contain optional equipment. Features shown may be offered only in combination with other options or subject to additional ordering requirements or limitations. Dimensions shown may vary due to optional features and/or production variability. Following publication of the 2010 original printed brochure, certain changes in standard equipment, options and the like, or product delays may have occurred which would not be included in these pages. Your Ford of Canada Dealer is your best source for up-to-date information. Ford Motor Company of Canada, Limited, reserves the right to change product specifications at any time without incurring obligations. Colours may not be exactly as illustrated. Please see your sales consultant for specific colour and model availability. Please visit your local dealer or [ford.ca](http://ford.ca) for complete vehicle details.

#### FORD EXTENDED SERVICE PLAN

For a purchase or lease, the Ford Extended Service Plan (ESP) gives you "Peace-of-Mind" protection designed to cover key vehicle components and help protect you from the cost of unexpected repairs. To add to your peace of mind and help protect your investment beyond your New Vehicle Basic Warranty, complement your ESP with a prepaid maintenance plan that covers all required scheduled maintenance items for your vehicle and 8 wear items. Ask your Dealer for a Ford ESP, the only service contract backed exclusively by Ford Motor Company of Canada, Limited, and honoured at all Ford and Ford Lincoln Dealerships across North America. Certain limitations and exclusions apply, see your Dealer for details.

#### FORD CREDIT

Get the ride you want. Whether you plan to lease or finance, you'll find the choices that are right for you at Ford Credit. Ask your local Ford of Canada Dealer for details or check us out at [fordcredit.ca](http://fordcredit.ca).



Escape & Escape Hybrid



Explorer



Sport Trac



Expedition & Expedition MAX