



2017  
**EXPEDITION+MAX**

**ENLARGE YOUR TERRITORY.** Whether on the town for a night or at the cottage for a week, we are all teammates. Connecting with each other – and our environment. Striving for the truly extraordinary. The destinations constantly change. What really matters is the confidence to go. As well as the memory-making experiences shared along the way. Life is a Sport. This is your Utility. Be Unstoppable. The 2017 Ford Expedition.



Platinum in Shadow Black with available equipment.

POWER TO EARN YOUR TRUST.



#### Road Warrior

Get your cargo where it needs to go. With a best-in-class max. towing capacity<sup>1</sup> of 9,200 lbs. (4,173 kg) and systems to help keep that brawn in check. Hitch up easily – using the full-colour rear view camera display – and head out. Even with a heavy load, the mechanical load-levelling rear suspension<sup>2</sup> levels the chassis to help ensure a steady ride. Further balance comes from an integrated trailer brake controller that helps keep vehicle brakes and electric trailer brakes working together.<sup>3</sup> When starting up an incline, hill start assist momentarily maintains brake pressure until the engine delivers enough torque to move you. Expedition advances your adventures.

#### Off The Beaten Path

A class-exclusive off-road display in the vibrant instrument cluster colour screen empowers you with key information: vehicle pitch angle, bank angle, wheel direction and more. For increased confidence, Expedition is equipped with Hill Descent Control,<sup>TM</sup> which helps maintain vehicle speed on steep declines so you can concentrate on manoeuvring.

#### 3.5L EcoBoost

Your confidence grows every time you press the accelerator in Expedition. With 365 horsepower and 420 lb.-ft. of torque, the surge from its twin-turbocharged, direct-injection 3.5L EcoBoost<sup>®</sup> engine grabs hold of you. Teamed with a 6-speed automatic transmission with SelectShift<sup>®</sup> capability, its power makes the drive just as fun as the destination.

*Fuel consumption ratings:  
15.9L/100 km city and 12.0L/100 km hwy  
(18 mpg city/24 hwy);<sup>4</sup> Expedition*

**XLT in Blue Jeans Metallic with available equipment.** Driver-assist features are supplemental and do not replace the driver's attention, judgment and need to control the vehicle. <sup>1</sup>When properly equipped. Class is Extended Utilities based on Ford segmentation. <sup>2</sup>Available feature. <sup>3</sup>Trailer brake controller verified to be compatible with electrically actuated drum brakes and certain electric-over-hydraulic brake systems. See your Ford of Canada Dealer for details. <sup>4</sup>Fuel consumption ratings based on Government of Canada approved test methods. Actual fuel consumption will vary.



EXPEDITION MAX  
**OVER 2X**  
THE SPACE<sup>1</sup>

**ROOM FOR EVERYONE. AND EVERYTHING.** In Expedition, one of the best parts of any trip is the drive. So the fun starts when you leave the driveway. Up front, the large centre console features abundant storage and includes 2 smart-charging USB ports<sup>2</sup> to keep your mobile phones charged. Power-adjustable brake and accelerator pedals feature memory settings<sup>2</sup> for 2 different drivers, as do the 10-way power, heated and cooled front bucket seats.<sup>2</sup> And because you're travelling with roomy seating for up to eight, friends can enjoy heated 2nd-row outboard seats<sup>2</sup> and best-in-class 3rd-row leg room. To quickly switch from carrying people to transporting cargo and back again, the PowerFold<sup>®</sup> 3rd-row seat<sup>2</sup> operates with one-touch push-button ease.

**Platinum MAX in Brunello luxury leather trim with perforated inserts and available equipment.** Cargo and load capacity limited by weight and weight distribution.

<sup>1</sup>Cargo volume behind 3rd-row seat compared to regular-length Expedition. <sup>2</sup>Available feature. <sup>3</sup>SiriusXM subscriptions sold after 6-month prepaid period expires. Subscriptions are governed by SiriusXM Customer Agreement; see [siriusxm.ca](http://siriusxm.ca). Data rates may apply.

#### SiriusXM<sup>2</sup>

Listen to your favourites all across Canada. Your 6-month prepaid subscription gets you the best in audio entertainment including 100% commercial-free music from every genre, world-class news, sports, comedy and entertainment. Plus listen anywhere online and on the SiriusXM<sup>®</sup> app.<sup>3</sup>





### SYNC 3

In addition to all the voice-activated benefits of SYNC® – placing and answering calls, and controlling music from your devices – you'll love the easy-to-use interface of SYNC 3.<sup>1,2</sup> An 8" colour LCD screen displays phone, audio and navigation<sup>1</sup> features. Enhanced voice recognition lets you give simple commands. A capacitive touchscreen includes a convenient swipe feature, as well as pinch-to-zoom functionality within navigation.

### Voice-Activated Navigation System

Find your destination easily with help from the voice-activated Navigation System.<sup>1</sup> Zoom and scroll through interactive maps complete with available 3-D mapping and receive voice-guided turn-by-turn directions. Easy destination entry helps you locate your favourite restaurants, nearest ATM, closest fuel station and more.

### SYNC AppLink

Use your voice to control select compatible mobile apps, thanks to standard SYNC AppLink.<sup>3</sup>

### Siri Seamless Integration

Bring the power of Siri® into Expedition with Siri Eyes Free,<sup>4</sup> your paired iPhone® and a long press of the voice recognition button on the steering wheel.

### Automatic Updates Over Wi-Fi

Keep SYNC 3 current with the latest software as new updates become available.<sup>5</sup> All you need is a Wi-Fi® connection.

<sup>1</sup>Available feature. <sup>2</sup>Don't drive while distracted. Use voice-operated systems when possible; don't use handheld devices while driving. Some features may be locked out while the vehicle is in motion. Not all features are compatible with all phones. Message and data rates may apply. SYNC voice recognition and screens available in English, French and Spanish. <sup>3</sup>SYNC AppLink is compatible with select smartphone platforms and requires compatible apps to be installed and running on a capable smartphone while connected to SYNC. Commands may vary by phone and AppLink software. Message and data rates may apply. <sup>4</sup>Requires SYNC 3. <sup>5</sup>Optional Navigation System map updates cannot be received via Wi-Fi and require a separate update. Data rates may apply.

## REFINE THE ROAD.

### Continuously Controlled Damping

You've got the power and space you want. Now get the ride feel that suits you by setting the continuously controlled damping (CCD)<sup>1</sup> to any of 3 drive modes. Select Normal for everyday driving, or Comfort for a softer ride on a mellow Sunday cruise. Expedition really shows off its great handling when you switch to Sport mode. CCD is paired with 22" polished aluminum wheels on Platinum.

### AdvanceTrac with RSC

Add to your peace of mind with the knowledge that AdvanceTrac<sup>®</sup> with RSC<sup>®</sup> (Roll Stability Control<sup>™</sup>)<sup>2</sup> is standard on every Expedition. Providing enhanced vehicle stability in a wide range of conditions, the system selectively applies individual brakes and modifies engine power to help keep all 4 wheels firmly planted.

### BLIS (Blind Spot Information System)

Alerts you with a light in either sideview mirror<sup>3</sup> if its radar sensors detect a vehicle in the corresponding blind spot. Cross-traffic alert, part of the system, notifies you with a beep and a warning light in your sideview mirror if it detects a vehicle approaching either side as you slowly back Expedition out of a parking space. Either way, BLIS<sup>®</sup> with cross-traffic alert<sup>1</sup> helps keep you aware of things that may be just out of your line of sight.



Limited MAX in Ruby Red Metallic Tinted Clearcoat with available equipment. Driver-assist features are supplemental and do not replace the driver's attention, judgment and need to control the vehicle. <sup>1</sup>Available feature. <sup>2</sup>Remember that even advanced technology cannot overcome the laws of physics. It's always possible to lose control of a vehicle due to inappropriate driver input for the conditions. <sup>3</sup>BLIS replaces standard integrated blind spot mirrors.



## TAKE CHARGE OF YOUR ADVENTURES.

Fine appointments. Built-in capability. The 2017 Expedition Platinum can take you from a night on the town to a cabin in the woods, with utmost ease and complete confidence. Your calling card for luxurious adventure, its polished stainless, power-deployable running boards, 22" polished aluminum wheels,<sup>1</sup> unique grille accents, and unique liftgate appliqué offer a preview of the elegance that awaits inside.

A voice-activated Navigation System puts you in command of your surroundings in this luxurious cockpit. Soft ambient lighting, a power moonroof and luxury leather-trimmed seats in Brunello or Ebony with stitched PLATINUM lettering bring richness to this spacious interior. As does the leather-wrapped steering wheel and centre console armrest with Agate stitching. Whatever the conditions outside, Platinum helps ensure that you'll be more than comfortable inside.



## DELIVERS THE EXTRAORDINARY.

When people say they love their vehicle, it's often the unexpected features that steal their heart. In Expedition, it's easy to get attached to stargazing out of its power moonroof<sup>1</sup> or recharging your portable devices with its 110-volt-/150-watt-capacity AC power outlet.<sup>1</sup> And not only does the standard 2nd-row 40/20/40 split-fold seat fold completely flat, its CenterSlide<sup>®</sup> functionality can move the middle section forward almost 280 mm, giving you convenient access to a child seat. Expedition MAX provides best-in-class max. cargo space of 3,703 litres (130.8 cu. ft.)<sup>2</sup> so you don't need to spend time worrying about what to leave behind. There are plenty of ways to creatively stow all your stuff, including a Cargo Management System<sup>1</sup> behind the rear seat that can be positioned as either a cargo shelf or a divider.



Platinum in White Platinum Metallic Tri-coat with available equipment. Cargo and load capacity limited by weight and weight distribution. <sup>1</sup>Available feature. <sup>2</sup>Behind 1st-row seats with the 2nd- and 3rd-row seats folded flat.

WHEELS

XLT



18" Bright-Machined Aluminum with Magnetic-Painted Pockets  
Standard: XLT



20" Bright-Machined Aluminum with Magnetic-Painted Windows  
Available: XLT

LIMITED/LIMITED MAX



20" Polished Aluminum  
Standard: Limited



20" Magnetic-Painted Aluminum  
Included: Limited Appearance Package

PLATINUM/PLATINUM MAX



20" Polished Aluminum  
Standard: Platinum



22" Polished Aluminum  
Optional: Platinum



STANDARD FEATURES

Mechanical

- 3.5L EcoBoost® V6 engine
- 6-speed automatic transmission with SelectShift® capability
- Axle – Rear, limited-slip, 3.73:1 ratio (Expedition MAX)
- Axle – Rear, non-limited-slip; 3.31:1 ratio (Expedition)
- Brakes – Power disc with Anti-Lock Brake System (ABS)
- Control Trac® 4-Wheel-Drive (4WD) System
- Fuel tank – 106-litre capacity (127-litre on Expedition MAX)
- Hill Descent Control™
- Steering – Electric power-assisted
- Suspension – 4-wheel independent
- Trailer sway control

Driver-Assist Technology

- Automatic headlights
- Hill start assist
- Reverse Sensing System

Seating

- 1st-row – Bucket seats
- 2nd-row – 40/20/40 split-fold seat with CenterSlide® (slide-forward feature for centre section); reclines and folds flat to floor in cargo mode

Interior

- SiriusXM® with 6-month prepaid subscription
- Assist handles – 2 in 1st row, 2 in 2nd row and 1 for liftgate
- Cargo Management System (Expedition MAX only)
- Climate controls – Auxiliary rear
- Compass display
- Console – 1st-row centre with storage bin, coin holder, 4 cupholders, auxiliary rear audio and climate controls, and pen holder
- Cruise control
- Cupholders – 9
- Door locks – Power
- Flooring – 1st- and 2nd-row carpeted floor mats
- Mirror – Auto-dimming rearview
- Power outlets – 12-volt powerpoints (3)
- Rear floor air vents
- Steering wheel – Audio controls
- Truck Apps
- Universal garage door opener

<sup>1</sup>Always wear your safety belt and secure children in the rear seat. <sup>2</sup>Fuel consumption ratings based on Government of Canada approved test methods. Actual fuel consumption will vary for all ratings.

- Visors – Illuminated vanity mirrors
- Windows – Power rear quarter
- Windows – Power with one-touch-up/-down driver's side feature

Exterior

- Door handles – Chrome
- Easy Fuel® capless fuel filler
- Exhaust tip – Chrome
- Headlights – Rainlight feature
- Heavy-Duty Trailer Tow Package includes Class IV hitch receiver, 7-/4-pin connectors, heavy-duty auxiliary transmission oil cooler, heavy-duty radiator, electronic brake wiring kit, and integrated trailer brake controller LED foglights
- Mouldings – Body-colour bodyside and wheel-lip
- SecuriCode™ keyless entry keypad
- Tow hooks – Front
- Windows – Privacy glass (rear doors, rear quarter windows and liftgate window)
- Wipers – Front: 2-speed variable intermittent with washer; rear: 2-speed intermittent with washer

Safety & Security

- Airbags – Dual-stage front;<sup>1</sup> safety belt pretensioners, safety belt energy-management retractors, safety belt usage sensors, driver's seat position sensor, crash severity sensor and restraint control module
- Airbags – Front-seat side<sup>1</sup>
- Airbags – Safety Canopy® System with 3-row side-curtain airbags<sup>1</sup> and rollover sensor
- 3-point safety belts for all seating positions
- AdvanceTrac® with RSC® (Roll Stability Control™)
- Belt-Minder™ front safety belt reminder
- Child-safety rear door locks
- Height-adjustable shoulder safety belts for 1st row
- LATCH – Lower Anchors and Tether Anchors for Children (rear outboard seating positions)
- MyKey®
- Perimeter alarm
- Rear view camera
- SecuriLock® Passive Anti-Theft Engine Immobilizer System
- Side-intrusion door beams
- SOS Post-Crash Alert System™
- Tire Pressure Monitoring System (excludes spare)

ENGINE/ESTIMATED FUEL CONSUMPTION RATINGS<sup>2</sup>

3.5L EcoBoost V6

365 hp @ 5,000 rpm  
420 lb.-ft. of torque @ 2,250 rpm

Expedition

6-speed automatic transmission with SelectShift capability  
4x4 15.9L/100 km city and  
12.0L/100 km hwy  
(18 mpg city/24 hwy)

Expedition MAX

6-speed automatic transmission with SelectShift capability  
4x4 16.1L/100 km city and  
12.2L/100 km hwy  
(18 mpg city/23 hwy)

XLT	LIMITED	PLATINUM
		<b>Mechanical</b>
%	%	Axle – Rear, limited-slip, 3.73:1 ratio <sup>1</sup> (standard on MAX)
S		Battery – 72-amp
	S	Battery – 78-amp
	O	Suspension – Continuously controlled damping (CCD) (included and only available with optional 22" wheels)
O	O	Suspension – Rear load-levelling <sup>1</sup> (mechanical)
		<b>Driver-Assist Technology</b>
O	O	BLIS® (Blind Spot Information System) with cross-traffic alert <sup>1</sup>
	S	Forward Sensing System
S		SYNC® Voice Recognition Communications and Entertainment System which includes 4.2" colour LCD screens in instrument cluster and centre stack, 911 Assist,® AppLink™ and 1 smart-charging USB port
P	S	SYNC 3 which includes 8" colour LCD capacitive touchscreen in centre stack with swiping capability, 911 Assist, AppLink, SYNC Connect and 2 smart-charging USB ports
	S	Wipers – Rain-sensing windshield
		<b>Seating</b>
S		1st-row – Bucket seats with 2-way adjustable head restraints and 6-way power driver's seat with manual lumbar
P	S	1st-row – 10-way power, heated and cooled bucket seats, including power lumbar and recline with driver's memory feature
O	O	2nd-row – Bucket seats <sup>1</sup>
P	S	2nd-row – Heated outboard seats
S		3rd-row – 60/40 split-fold-flat-to-floor bench seat
P	S	3rd-row – PowerFold® seat
S		Trim – Cloth
P	S	Trim – Leather with perforated inserts on 1st- and 2nd-row seats
	S	Trim – Luxury leather with perforated inserts on 1st- and 2nd-row seats with Agate tuxedo stripes, stitching and embroidered "PLATINUM" logo
		<b>Interior</b>
S		Premium Sound System with single-CD player, MP3 capability and 6 speakers
P	S	Audio System from Sony® with 12 speakers and subwoofer
O	S	Voice-activated Navigation System <sup>1</sup> with pinch-to-zoom capability
	S	Accents – Woodgrain on centre console, door switch plates and instrument panel
	S	Accents – Luxury leather trim on centre console armrest with Agate stitching
	S	Accents – Door-panel inserts and armrests with Agate tuxedo stripe and stitching
P	S	Ambient lighting
S		Climate controls – Single-zone electronic automatic temperature control
P	S	Climate controls – Dual-zone electronic automatic temperature control
S	S	Console – Overhead with map lights, single sunglasses holder and rear quarter window switches

XLT	LIMITED	PLATINUM
		<b>S</b> Door-sill scuff plates – 1st-row with "PLATINUM" logo
O	O	<b>O</b> Dual Headrest DVD by INVISION™1,2
O	O	<b>O</b> Flooring – 1st- and 2nd-row all-weather floor mats
	S	<b>S</b> Ignition – Keyless entry with push-button start
P	S	<b>S</b> Ignition – Remote Start System <sup>1</sup>
	S	<b>S</b> Pedals – Power-adjustable
P	S	<b>S</b> Pedals – Power-adjustable with memory
P	S	<b>S</b> Power outlet – 110-volt converter
P	S	<b>S</b> Shift knob – Leather-wrapped
	S	<b>S</b> Steering column – Manual-tilt/-telescoping
P	S	<b>S</b> Steering column – Power-tilt/-telescoping
	S	<b>S</b> Steering wheel – Leather-wrapped
	S	<b>S</b> Steering wheel – Leather-wrapped with micro-perforated leather upper insert, Agate stitching and chrome accents
		<b>Exterior</b>
	S	<b>S</b> Badging – "PLATINUM" lettering on lower front doors
	S	<b>S</b> Bumper – Chrome accent bar on lower front
	S	<b>S</b> Bumpers – Body-colour
	S	<b>S</b> Grille – Chrome bars with Magnetic-painted accents
	P	<b>S</b> Grille – Chrome bars with Thunderstorm-painted accents
		<b>S</b> Grille – Magnetic-painted
	S	<b>S</b> Grille – Satin-aluminum bars with chrome accents
	S	<b>S</b> Headlights – Quad-reflector with blackout treatment
	S	<b>S</b> Headlights – Halogen projector
	S	<b>S</b> Liftgate – Manual
	P	<b>S</b> Liftgate – Power
	S	<b>P</b> Liftgate appliqué – Chrome with Magnetic-painted accent bar
	S	<b>S</b> Liftgate appliqué – Chrome with Thunderstorm-painted accent bar
	S	<b>S</b> Liftgate appliqué – Chrome with satin-aluminum-finish accent bar
	S	<b>S</b> Mirrors – Black, power, heated sideview with integrated blind spot mirrors and security approach lights
	S	<b>S</b> Mirrors – Body-colour, power-adjustable/-folding, heated sideview with auto-dimming driver's side, integrated blind spot mirrors, security approach lights, integrated turn signal indicators and memory feature
		<b>S</b> Mirrors – Chrome, power-adjustable/-folding, heated sideview with auto-dimming driver's side, security approach lights, integrated turn signal indicators and memory feature
	P	<b>S</b> Mirrors – Magnetic-painted, power-adjustable/-folding, heated sideview with auto-dimming driver's side, integrated blind spot mirrors, security approach lights, integrated turn signal indicators and memory feature
	O	<b>S</b> Moonroof – Power (includes mini overhead console)
		<b>S</b> Mouldings – Polished stainless rear quarter panel beltline
	S	<b>P</b> Roof rack – Black side rails with black crossbars
	S	<b>S</b> Roof rack – Chrome side rails with black crossbars
	S	<b>S</b> Running boards – Black
	S	<b>S</b> Running boards – Body-colour, power-deployable
		<b>S</b> Running boards – Polished stainless, power-deployable
		<b>S</b> Satin-aluminum finish on liftgate handle
		<b>S</b> Tow hooks – Front chrome

XLT	LIMITED	PLATINUM
O		<b>Available Equipment Group &amp; Package</b>
		<b>Equipment Group 201A</b> – 1st-row, 10-way power, heated and cooled bucket seats, including power lumbar and recline + leather trim with perforated inserts on 1st- and 2nd-row seats + heated 2nd-row outboard seats + PowerFold 3rd-row seat + power-tilt/-telescoping steering column + memory feature for driver's seat, power-adjustable pedals, steering column and sideview mirrors + Remote Start System + dual-zone electronic automatic temperature control + SYNC 3 (8" colour LCD capacitive touchscreen in centre stack with swiping capability, 911 Assist, AppLink, SYNC Connect and 2 smart-charging USB ports) + Audio System from Sony with 12 speakers and subwoofer + leather-wrapped shift knob + 110-volt power outlet + ambient lighting + sideview mirror integrated turn signal indicators + power liftgate
	O	<b>Limited Appearance Package</b> includes 20" Magnetic-painted aluminum wheels; Magnetic-painted grille, sideview mirror caps, and rear liftgate appliqué; black roof rack side rails; and unique finish on door switch plates and centre and lower instrument panels

**DIMENSIONS**

Exterior mm (in.)	Expedition/MAX
Wheelbase	3,022 (119.0)/3,327 (131.0)
Length	5,233 (206.0)/5,609 (220.8)
Height (with options)	1,960 (77.2)/1,973 (77.7)
Width – Excluding mirrors	2,001 (78.8)/2,001 (78.8)
Width – Including mirrors	2,331 (91.8)/2,331 (91.8)
Width – Mirrors folded	2,024 (79.7)/2,024 (79.7)
Minimum running ground clearance	204 (8.0)/203 (8.0)
Liftover height	864 (34.0)/866 (34.1)
Overhang – Front	986 (38.8)/986 (38.8)
Overhang – Rear	1,226 (48.3)/1,298 (51.1)
Ramp breakover angle	16.3°/15.3°
Angle of approach	22.2°/22.5°
Angle of departure	21.7°/20.3°

Interior mm (in.)	Expedition/MAX
<b>1st Row</b>	
Head room	1,006 (39.6)/1,004 (39.5)
Leg room (max.)	1,093 (43.0)/1,093 (43.0)
Hip room	1,506 (59.3)/1,506 (59.3)
Shoulder room	1,606 (63.2)/1,606 (63.2)

<b>2nd Row</b>	
Head room	1,010 (39.8)/1,009 (39.7)
Leg room	994 (39.1)/994 (39.1)
Hip room	1,521 (59.9)/1,521 (59.9)
Shoulder room	1,617 (63.7)/1,617 (63.7)

<b>3rd Row</b>	
Head room	974 (38.3)/966 (38.0)
Leg room	957 (37.7)/957 (37.7)
Hip room	1,274 (50.2)/1,316 (51.8)
Shoulder room	1,318 (51.9)/1,704 (67.1)

Capacities litres (cu. ft.) <sup>3</sup>	Expedition/MAX
Max. cargo volume	3,065 (108.3)/3,703 (130.8)
Behind 2nd row	1,557 (55.0)/2,420 (85.5)
Behind 3rd row	528 (18.6)/1,207 (42.6)

Max. Loaded Trailer Weight kg (lbs.) <sup>4</sup>	Expedition/MAX
3.31:1 axle ratio 4x4 Class IV	4,173 (9,200)/—
3.73:1 axle ratio 4x4 Class IV	4,173 (9,200)/4,128 (9,100)

Comparisons based on competitive models (class is Extended Utilities based on Ford segmentation), publicly available information and Ford certification data at the time of printing. Some features discussed may be optional. Vehicles may be shown with optional equipment. Features may be offered only in combination with other options or subject to additional ordering requirements or limitations. Dimensions shown may vary due to optional features and/or production variability. Information is provided on an "as is" basis and could include technical, typographical or other errors. Ford Motor Company of Canada, Limited, makes no warranties, representations, or guarantees of any kind, express or implied, including but not limited to, accuracy, currency, or completeness, the operation of the information, materials, content, availability, and products. Your Ford of Canada Dealer is your best source for up-to-date information. Ford Motor Company of Canada, Limited, reserves the right to change product specifications, pricing and equipment at any time without incurring obligations.

<sup>1</sup>Restrictions apply. See your Ford of Canada Dealer for details. <sup>2</sup>Ford Licensed Accessory. <sup>3</sup>Cargo and load capacity limited by weight and weight distribution. <sup>4</sup>Maximum towing capability when properly equipped. Maximum capability will vary based on passenger and cargo loads, and optional equipment installed on the vehicle. See your Ford of Canada Dealer for more information.

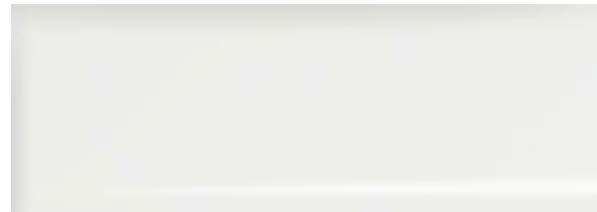
INVISION is a trademark of VOXX International Corporation. iPhone and Siri are trademarks of Apple Inc., registered in the U.S. and other countries. "SiriusXM," the SiriusXM logo, channel names and logos are trademarks of SiriusXM Radio Inc. and are used under licence. Sony is a registered trademark of the Sony Corporation. THULE is a registered trademark of Thule Sweden AB. Wi-Fi® is a registered trademark of the Wi-Fi Alliance.® All other trademarks, service marks, images and logos are property of their respective owners and are displayed in this publication with permission. All rights reserved.

EXTERIOR AND INTERIOR CHOICES

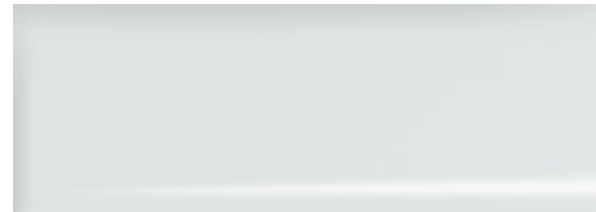
	XLT	LIMITED	PLATINUM
Exterior	White Platinum Metallic Tri-coat <sup>1</sup>	1 2 3 4	5 6
	Oxford White	1 2	
	Ingot Silver Metallic	2 4	3 4 5 6
	White Gold Metallic	1 2 3 4	5 6
	Bronze Fire Metallic	1 2 3 4	3 4 5 6

	XLT	LIMITED	PLATINUM
Exterior	Ruby Red Metallic Tinted Clearcoat <sup>1</sup>	3 4	5 6
	Blue Jeans Metallic	1 2 3 4	3 4 5 6
	Magnetic Metallic	1 2 3 4	3 4 5 6
	Shadow Black	1 2 3 4	3 4 5 6

3,4: Available on XLT (requires Equipment Group 201A)



White Platinum Metallic Tri-coat



Oxford White



Ingot Silver Metallic



White Gold Metallic



Bronze Fire Metallic



Ruby Red Metallic Tinted Clearcoat



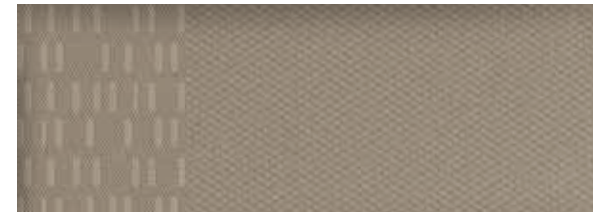
Blue Jeans Metallic



Magnetic Metallic

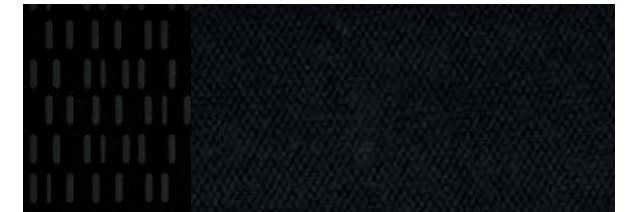


Shadow Black



Dune Cloth

1



Ebony Cloth

2



Dune Leather with Perforated Inserts

3



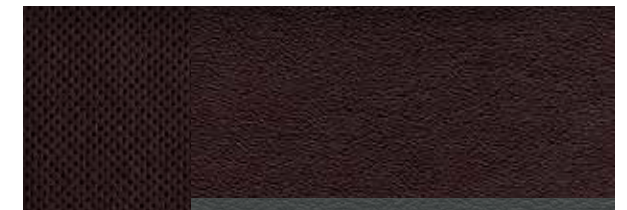
Ebony Leather with Perforated Inserts

4



Ebony Leather with Perforated Inserts and Agate Tuxedo Stripe

5



Brunello Luxury Leather with Perforated Inserts and Agate Tuxedo Stripe

6



Limited MAX in Ruby Red Metallic Tinted Clearcoat accessorized with roof-mounted ski/snowboard carrier by THULE,<sup>®</sup> smoked hood and side window deflectors, flat splash guards, and trailer towing accessories

**Exterior**

- Flat splash guards
- Full vehicle covers<sup>1</sup>
- Hood and side window deflectors
- Hood protector<sup>1</sup>
- Locking fuel plug
- Racks and carriers<sup>1</sup>
- Roof crossbars
- Sportz<sup>®</sup> tent<sup>1</sup>
- Trailer towing accessories
- Wheel lock kits

**Interior**

- All-weather floor mats (A)
- Cargo area protector (B)
- Cargo organizers and protectors
- Carpeted floor mats
- Door sill plates
- First aid and roadside assistance kits<sup>1</sup>
- Interior light kit
- Protective seat covers<sup>1</sup> (C)
- Tablet cradle<sup>1</sup>

**Electronics**

- Keyless entry keypad
- Remote Access (D)
- Remote start systems
- Vehicle Security System
- Warning sensor systems<sup>1</sup>



<sup>1</sup>Ford Licensed Accessory.

**Ford Protect plans.** Help protect your investment and add to your peace of mind by complementing your vehicle purchase or lease with a Ford Protect plan. Ford Protect offers you protection against unexpected repair costs after your Basic Coverage in the New Vehicle Limited Warranty expires by covering many vehicle components. Enjoy the drive even more by complementing your Ford Protect plan with a prepaid maintenance plan, which covers all required scheduled maintenance for your vehicle, plus eight wear items. Ask your dealer for a Ford Protect plan, the only service contract backed exclusively by Ford and honoured at all Ford Lincoln dealerships.

**Ford Credit.** Get the ride you want. Whether you plan to lease or finance, you'll find the choices that are right for you at Ford Credit. Ask your local Ford of Canada Dealer for details or check us out at [fordcredit.ca](http://fordcredit.ca).

**Ford Original Accessories** that are properly installed by the authorized Dealer that sold the accessory will be warranted for whichever provides you the greatest benefit: 24 months/unlimited distance, or the remainder of your 3-year/60,000-km New Vehicle Limited Warranty. Ford Licensed Accessories (FLA) are warranted by the accessory manufacturer's warranty. FLA are designed and developed by the accessory manufacturer and have not been designed or tested to Ford Motor Company engineering requirements. Contact your local Ford of Canada Dealer for details and/or a copy of all limited warranties.

**For prompt, courteous answers to your questions:**

**Ford Customer Relationship Centre 1-800-565-3673;**

**Ford Credit Customer Service Centre 1-877-636-7346.**

# OUR COMMITMENT TO YOU: PEACE-OF-MIND PROTECTION

- Basic Coverage: 3 years/60,000 km
- Powertrain Limited Warranty: 5 years/100,000 km
- Corrosion Perforation Warranty: 5 years/unlimited distance
- Roadside Assistance: 5 years/100,000 km

