

2015  
**FLEX**



**Go Further**



## Live fully. Drive efficiently.<sup>1</sup>

An unconventional blend of style, space and smarts, Ford Flex is the modern way to move.

**Seat up to 7** in its 3 roomy rows. Drivers will really appreciate the new heated steering wheel,<sup>2</sup> while passengers in the 2nd and 3rd rows enjoy best-in-class<sup>3</sup> head and leg room.

**Flex offers smart technologies** designed to help you maintain your distance in traffic,<sup>2</sup> see your path more clearly,<sup>2</sup> and even steer into parallel parking spots.<sup>2</sup>

**Powered by your choice** of a 3.5L Ti-VCT V6 engine rated at X.XL/100 km (XX mpg) hwy,<sup>1</sup> or a rousing 365-hp<sup>4</sup> 3.5L EcoBoost® V6,<sup>2</sup> Flex is ideal for busy families. Go further in a 2015 Flex.

*Limited AWD. Ruby Red Metallic Tinted Clearcoat. Available equipment.*

Driver-assist features are supplemental and do not replace the driver's attention, judgment and need to control the vehicle.

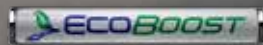
<sup>1</sup>FWD. Fuel consumption ratings based on Government of Canada approved test methods. Actual fuel consumption will vary. <sup>2</sup>Available feature. <sup>3</sup>Class is Large Utilities. <sup>4</sup>Figures achieved using 93-octane fuel.

X.XL/100 km (XXMPG) HWY<sup>1</sup>  
X.XL/100 km (XXMPG) CITY<sup>1</sup>

## Excites. Any way you power it.

Equipped with its standard 3.5L Ti-VCT V6 engine, Flex uses twin independent variable camshaft timing to put 287 hp at your disposal. It also has a fuel efficiency rating of X.XL/100 km (XX mpg) hwy.<sup>1</sup> And the standard 6-speed SelectShift<sup>®</sup> automatic transmission allows you to shift for yourself whenever you'd like, or leave it to Flex.

**Get best-in-class V6 hp** when you choose the twin-turbocharged, direct-injection, 365-hp<sup>2</sup> 3.5L EcoBoost<sup>®</sup> engine.<sup>3</sup> Paired with Intelligent all-wheel drive (AWD) and steering wheel-mounted paddle shifters, the EcoBoost helps Flex deliver a more spirited performance.



Limited. Tuxedo Black Metallic. Oxford White roof. Available equipment.

<sup>1</sup>X.XL/100 km city and X.XL/100 km hwy (XX mpg city/XX hwy), FWD. Fuel consumption ratings based on Government of Canada approved test methods. Actual fuel consumption will vary.<sup>2</sup>Figures achieved using 93-octane fuel. <sup>3</sup>Available feature.



## Adapts. At the push of a button.

Flex offers room for up to 7, plus lots of versatility and powerful features that can help ease your passenger- and cargo-carrying experiences.

**The 10-way power driver's seat<sup>1</sup>** and power-adjustable pedals<sup>1</sup> can both include memory,<sup>1</sup> so Flex will recall your settings in an instant.

**Your 2nd-row seating options** include a bench that seats 3 people, or buckets<sup>1</sup> for 2 with a pass-through to the 3rd row or a 2nd-row console.<sup>1</sup> You'll also get best-in-class head and leg room in both the 2nd and 3rd rows.

**The class-exclusive PowerFold<sup>®</sup> 3rd-row seat** and either side of the 60/40 split 2nd-row bench seat can be folded to fit passengers and long cargo items. Enjoy up to 566 litres (20 cu. ft.)<sup>2</sup> of cargo space behind the 3rd-row seat, or up to 2,356 litres (83.2 cu. ft.) when the 2nd- and 3rd-row seats are folded flat.

**The power liftgate<sup>1</sup>** makes it easy to access the rear cargo area, even when your hands are full. Flex is all about form and function.

<sup>1</sup>Available feature. <sup>2</sup>Includes 141.5-litre (5.0-cu.-ft.) rear cargo storage well.



## Surprises. Bright, hot and cool.

A sky view in all 3 rows – courtesy of the multipanel Vista Roof®¹ – and class-exclusive 2nd-row-outboard inflatable safety belts¹ are just a couple of the ways Flex is designed to take care of its passengers.

**A heated steering wheel¹** treats the driver to comforting warmth on command – no need for bulky gloves when the outside temperature drops.

**Heated bucket seats¹** allow 2nd-row passengers to recline comfortably while charging their devices with the 110-volt power outlet¹ conveniently located on the back side of the centre console.

**Chilled beverages or frozen treats** can be stowed in the class-exclusive 2nd-row refrigerated console¹ for easy access while you travel. Surprises? Flex has more than a few.

¹Available feature.



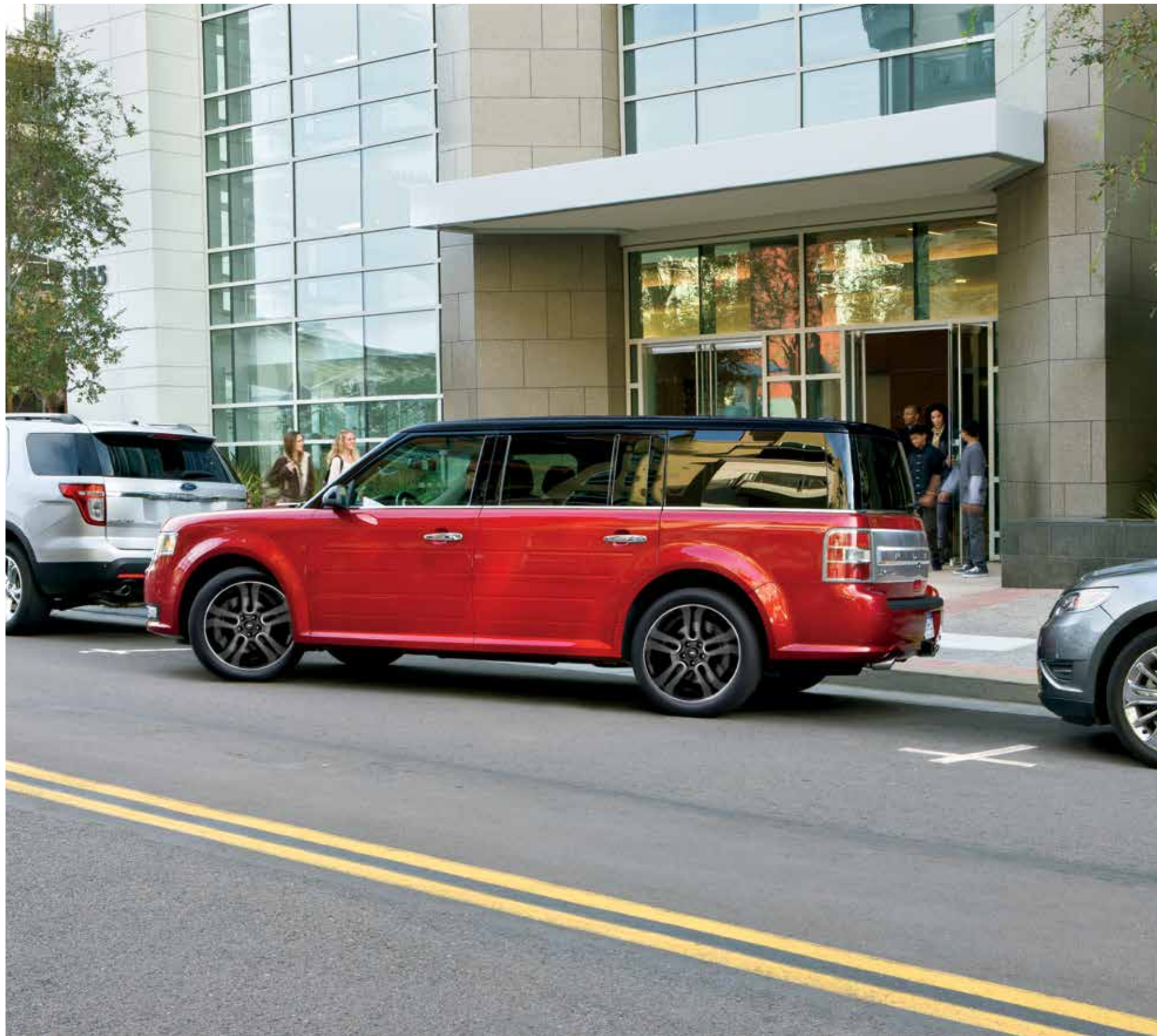
## Responds. To your commands.

Voice-activated Ford SYNC<sup>®1</sup> delivers hands-free calls, music and more with simple voice commands. Once paired with your phone, it can download your contacts and play Bluetooth<sup>®</sup>-streaming music. Or, plug in your MP3 player, USB or iPod<sup>®</sup> to listen to your favourites. SYNC also features 911 Assist<sup>®</sup> with GPS location reporting. SYNC with MyFord Touch<sup>™1,2</sup> adds an 8" colour LCD touch screen and more. Upgrade to the voice-activated Navigation System<sup>2</sup> for interactive maps you can zoom and scroll, complete with 3D landmarks. SYNC. Say the word.

**Listen to your favourites all across Canada** with SiriusXM<sup>®2</sup> Your 6-month prepaid subscription gets you the best in audio entertainment including 100% commercial-free music from every genre, world-class news, sports, comedy and entertainment.<sup>3</sup>

| SYNC | ((SiriusXM))

<sup>1</sup>Some mobile phones and some digital media players may not be fully compatible. Driving while distracted can result in loss of vehicle control. Only use SYNC/MyFord Touch/other devices, even with voice commands, when it is safe to do so. SYNC with MyFord Touch voice recognition and screens available in English, French and Spanish. Some features may be locked out while the vehicle is in motion. <sup>2</sup>Available feature. <sup>3</sup>SiriusXM subscriptions sold after 6-month prepaid period expires. Subscriptions are governed by SiriusXM Customer Agreement; see [siriusxm.ca](http://siriusxm.ca).



## Assists. Parking and more.

Flex driver-assist technologies<sup>1</sup> use ultrasonic sensors and sophisticated radar to help you park, avoid collisions and more.

**Make parallel parking easier** with class-exclusive active park assist.<sup>1</sup> It not only helps you find a spot, it actually steers the vehicle into place as you control the gear shifter, and brake and accelerator pedals.

**Get a heads-up** from adaptive cruise control and collision warning with brake support.<sup>1</sup> It helps maintain your choice of 4 preset gaps from the vehicle in front of you and can alert you to a potential collision. If one is detected, it flashes a warning on the windshield, sounds an alarm, and preps the braking system to help.

**Stay alert to traffic detected in blind spots** as you drive forward, or traffic nearing either side of the vehicle as you slowly back up, thanks to BLIS<sup>®</sup> (Blind Spot Information System) with cross-traffic alert!<sup>1</sup> It helps warn you using lights embedded in the sideview mirrors.<sup>2</sup>

*Limited. Ruby Red Metallic Tinted Clearcoat. Tuxedo Black Metallic roof. Appearance Package. Available equipment.*

Driver-assist features are supplemental and do not replace the driver's attention, judgment and need to control the vehicle.

<sup>1</sup>Available feature. <sup>2</sup>BLIS replaces standard integrated blind spot mirrors.



## Eases. Your mind.

With standard features like AdvanceTrac® with RSC® (Roll Stability Control™), which helps you avoid skidding or fishtailing.<sup>1</sup>

**A standard Safety Canopy® System** increases protection with side-curtain airbags that deploy to cover all 3 rows. Every Flex also comes with front-seat side airbags and the dual-stage front airbags included in our Personal Safety System.™

**High-intensity discharge (HID) headlamps<sup>2</sup>** produce more than twice the output, use less energy, and last longer than conventional halogen bulbs. They're standard on Limited.

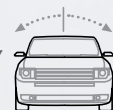
**Intelligent all-wheel drive (AWD)<sup>2</sup>** balances torque between the front and rear wheels to enhance handling and maximize traction.

**For a comprehensive list** of Safety & Security features engineered into every 2015 Ford Flex, please turn the page.

*SEL. White Platinum Metallic Tri-coat. Available equipment.*

<sup>1</sup>Remember that even advanced technology cannot overcome the laws of physics. It's always possible to lose control of a vehicle due to inappropriate driver input for the conditions. <sup>2</sup>Available feature.

ROLL STABILITY CONTROL



INFLATABLE 2ND-ROW SAFETY BELTS<sup>2</sup>



AWD<sup>2</sup> TRACTION



# Flex Specifications



Limited. Magnetic Metallic. Tuxedo Black Metallic roof. Appearance Package. Available equipment.

## Standard Features

### Mechanical

4-wheel disc Anti-Lock Brake System (ABS)  
 Battery Management System  
 Electric power-assisted steering (EPAS)  
 Fuel tank – 70.4-litre capacity

### Seating

1st-row bucket seats  
 2nd-row 60/40 split fold-flat bench seat with autofold function on 40 section  
 3rd-row manual fold-in-floor 50/50 split bench seat

### Interior

1st-row centre console with armrest, storage and 2 cupholders  
 12-volt powerpoints (4)  
 Accessory delay  
 Auto-dimming rearview mirror  
 Autolock power door locks  
 Cabin air filter  
 Carpeted floor mats in 1st and 2nd rows  
 Coat hooks in 2nd row (2)  
 Compass  
 Cruise control  
 Driver and front-passenger sun visors with illuminated vanity mirrors  
 Grab handles (3)  
 Grocery bag hooks in cargo area

Leather-wrapped shifter

Leather-wrapped steering wheel with cruise, audio and 5-way MyFord™ controls  
 Manual tilt/telescoping steering column  
 Map pockets in 1st-row seat backs  
 Overhead console with map lights and sunglasses holder  
 Power windows with one-touch-up/-down driver's side window feature  
 Reading lamps for 2nd- and 3rd-row passengers

### Exterior

Autolamp automatic headlamps with wiper-activated headlamps feature  
 Easy Fuel® capless fuel filler  
 Privacy glass on 2nd- and 3rd-row windows and liftgate  
 Quasi-dual exhaust with bright tips  
 Rear-window defroster  
 Reverse Sensing System  
 Windshield wipers – Front: variable-intermittent with washer; rear: 2-speed with washer

### Safety & Security

Personal Safety System™ for driver and front passenger includes dual-stage front airbags<sup>1</sup>; safety belt pretensioners, safety belt energy-management retractors, safety belt usage sensors, driver's seat position sensor, crash severity sensor, restraint control module and Front-Passenger Sensing System

3-point safety belts for all seating positions

4-way adjustable head restraints (front row only)  
 AdvanceTrac® with RSC® (Roll Stability Control™) and traction control  
 Belt-Minder™ front safety belt reminder  
 Child-safety rear door locks  
 Daytime running lamps  
 Front-seat side airbags<sup>1</sup>  
 Illuminated Entry System  
 Integrated key transmitter remotes (2)  
 LATCH – Lower Anchors and Tether Anchors for Children (3)  
 MyKey®  
 Safety Canopy® System with side-curtain airbags<sup>1</sup> and rollover sensor  
 SecuriCode™ invisible keypad  
 SecuriLock® Passive Anti-Theft Engine Immobilizer System  
 Side-intrusion door beams  
 SOS Post-Crash Alert System™  
 Tire Pressure Monitoring System (excludes spare)

## Estimated Fuel Consumption Ratings<sup>2</sup> and Dimensions

### 3.5L Ti-VCT V6

287 hp @ 6,500 rpm  
 254 lb.-ft. of torque @ 4,000 rpm  
 6-speed SelectShift® automatic transmission with shifter button activation  
 FWD X.XL/100 km city and X.XL/100 km hwy (XX mpg city/XX hwy)  
 AWD X.XL/100 km city and X.XL/100 km hwy (XX mpg city/XX hwy)

### 3.5L EcoBoost® V6

365 hp @ 5,500 rpm<sup>3</sup>  
 350 lb.-ft. of torque @ 3,500 rpm<sup>3</sup>  
 6-speed SelectShift automatic transmission with steering wheel-mounted paddle shifters  
 AWD X.XL/100 km city and X.XL/100 km hwy (XX mpg city/XX hwy)

### Exterior mm (in.)

Wheelbase	2,995 (117.9)
Length	5,126 (201.8)
Height – Excluding options	1,727 (68.0)
Height – Including options	1,760 (69.3)
Width – Excluding mirrors	1,928 (75.9)
Width – Including mirrors	2,256 (88.8)
Width – Mirrors folded	2,035 (80.1)

### Interior mm (in.)

	1st/2nd/3rd Row
Head room	1,062 (41.8)/1,029 (40.5)/983 (38.7)
Shoulder room	1,483 (58.4)/1,476 (58.1)/1,290 (50.8)
Hip room	1,410 (55.5)/1,397 (55.0)/1,044 (41.1)
Leg room	1,036 (40.8)/1,125 (44.3)/846 (33.3)

### Capacities<sup>4</sup> litres (cu. ft.)

Passenger volume	4,412 (155.8)
Behind 1st row	2,356 (83.2)
Behind 2nd row	1,223 (43.2)
Behind 3rd row	566 (20.0) <sup>5</sup>

<sup>1</sup>Always wear your safety belt and secure children in the rear seat. <sup>2</sup>Fuel consumption ratings based on Government of Canada approved test methods. Actual fuel consumption will vary for all ratings. <sup>3</sup>Figures achieved using 93-octane fuel. <sup>4</sup>Cargo and load capacity limited by weight and weight distribution. <sup>5</sup>Includes 141.5-litre (5.0-cu.-ft.) rear cargo storage well.

## SE

### Equipment Group 100A

Includes all standard features, plus:

#### Mechanical

3.5L Ti-VCT V6 engine with 6-speed SelectShift® automatic transmission with shifter button activation

Front-wheel drive (FWD)

#### Seating

6-way power driver's seat with 4-way manual front-passenger seat

7-passenger seating

Cloth seating

#### Interior

AM/FM stereo/single-CD player with MP3 capability and 6 speakers

SYNC® with MyFord™ voice-activated, in-vehicle connectivity system with 4.2" colour LCD displays in instrument cluster and centre stack; SYNC Applink™; and media hub with auxiliary input jack and USB port

Single-zone air conditioning with 2nd- and 3rd-row adjustable vents

#### Exterior

17" painted aluminum wheels with P235/60R17 BSW tires

Black beltline

Black, power, heated, manually folding sideview mirrors with integrated blind spot mirrors

Body-colour-painted door handles

Body-colour-painted roof

Chrome grille

Halogen headlamps

#### Available Options

2nd-row-outboard inflatable safety belts

All-weather floor mats (1st and 2nd rows)

Black roof-rack side rails

Dual headrest DVD entertainment system by INVISION™<sup>1</sup>

Engine block heater

SiriusXM® with 6-month prepaid subscription

## SEL

### Equipment Group 200A

Includes select SE features, plus:

#### Mechanical

Heavy-duty brake calipers

#### Seating

1st-row heated bucket seats, including 10-way power driver's seat with power lumbar and recline, and 6-way power passenger seat with manual lumbar and recline

#### Interior

1st-row passenger one-touch-up/-down window feature

Cargo net

Dual-zone electronic automatic temperature control

Intelligent Access with push-button start

SYNC with MyFord Touch™ voice-activated, in-vehicle connectivity system which includes two configurable 4.2" LCD displays in instrument cluster; 8" colour LCD touch screen in centre stack; and media hub with 2 USB ports, SD card reader and audio/video input jacks

San Macassar wood-appearance appliqué on instrument panel and door-trim panels

SiriusXM with 6-month prepaid subscription

Universal garage door opener

#### Exterior

18" painted aluminum wheels with P235/60R18 BSW tires

Black-painted, power, heated, manually folding sideview mirrors with integrated blind spot mirrors

Bright stainless steel beltline mouldings

Chrome door handles

Fog lamps with bright bezels

"SEL" badge

### Available Equipment Groups

**Equipment Group 201A** – 110-volt power outlet + body-colour liftgate appliqué + power liftgate + rear view camera

**Equipment Group 202A** – Includes all content of 201A + power-adjustable pedals with memory + BLIS® (Blind Spot Information System) with cross-traffic alert + 1st- and 2nd-row leather-trimmed seating with 3rd-row vinyl + driver's seat memory + heated sideview mirrors with security approach lamps and driver's side memory + Premium Audio System with 7 speakers + Remote Start System

### Available Options & Packages

2nd-row 40/40 reclining bucket seats

2nd-row console (requires 2nd-row 40/40 reclining bucket seats and 201A or 202A)

2nd-row-outboard inflatable safety belts

All-weather floor mats (1st and 2nd rows)

**Cargo Versatility Package** includes Class III Trailer Tow Package (hitch receiver with 4,500-lb. [2,041-kg] rating;<sup>2</sup> 7-/4-pin connector with wiring harness, engine oil cooler and trailer sway control), all-weather floor mats (1st and 2nd rows), and silver roof-rack side rails (black with SEL Appearance Package)

**Class III Trailer Tow Package** includes hitch receiver with 4,500-lb. (2,041-kg) rating; 7-/4-pin connector with wiring harness, engine oil cooler and trailer sway control

Dual headrest DVD entertainment system by INVISION™<sup>1</sup>

Engine block heater

Intelligent all-wheel drive (AWD)

Multipanel Vista Roof®

**SEL Appearance Package** includes Tuxedo Black Metallic-painted roof (monochromatic roof available) and sideview mirror caps, 20" machined aluminum wheels with premium painted pockets, Charcoal Black leather-trimmed seats with Grey perforated inserts, perforated leather-wrapped steering wheel with Meteorite Black bezels, unique instrument panel and door-trim appliqué, and unique logo on 1st-row floor mats (requires 202A)

Silver roof-rack side rails (black with SEL Appearance Package)

Two-tone roof

Voice-activated Navigation System (requires 202A)

### Available Ford Custom Accessories

Visit your Ford of Canada Dealer to shop the complete collection



17" Painted Aluminum  
Standard: **SE**



18" Painted Aluminum  
Standard: **SEL**



20" Machined Aluminum with  
Premium Painted Pockets  
Included: **SEL Appearance Package**

SEL. Charcoal Black cloth trim. Available equipment.

SEL. Dual-zone electronic automatic temperature control.

SEL. Intelligent Access with push-button start.

SEL. Cargo net.

<sup>1</sup>Ford Licensed Accessory. <sup>2</sup>See your Ford of Canada Dealer for towing capacity information. <sup>3</sup>Available feature.

# Limited



**Equipment Group 300A**  
Includes select SEL features, plus:

**Mechanical**

Intelligent all-wheel drive (AWD)

**Seating**

1st-row perforated leather-trimmed heated bucket seats, including 10-way power driver's seat with power lumbar and recline and memory, and 6-way power passenger seat with manual lumbar and recline

2nd-row perforated leather-trimmed (outboard positions) 60/40 split bench seat with flip-up armrest and 2 cupholders

3rd-row vinyl 50/50 split manually folding bench seat

**Interior**

110-volt power outlet

Ambient lighting

Audio System from Sony® with AM/FM stereo/single-CD player and 12 speakers

Black front door-sill scuff plates with aluminum inserts  
Colour-keyed leather-wrapped steering wheel with real wood inlay

Power-adjustable pedals with memory

Rear view camera

Remote Start System

Yoho maple woodgrain-appearance appliques on instrument panel and door-trim panels

**Exterior**

19" painted aluminum wheels with P235/55R19 BSW tires

BLIS® (Blind Spot Information System) with cross-traffic alert

Body-colour, power, heated, power-folding sideview mirrors with integrated security approach lamps, and memory on driver's side

High-intensity discharge (HID) headlamps

Light-emitting diode (LED) tail lamps

"LIMITED" badge

Power liftgate with satin-aluminum appliqué

Rain-sensing windshield wipers

Satin-aluminum grille

**Available Equipment Groups**

**Equipment Group 301A** – Active park assist + adaptive cruise control and collision warning with brake support + 10-way power, heated and cooled 1st-row seats + 3rd-row vinyl 50/50 split bench seat with one-touch PowerFold® and tumble with tailgate feature + heated steering wheel + power-tilt/-telescoping steering column + 20" polished aluminum wheels with P255/45R20 all-season BSW tires

**Equipment Group 303A** – Includes all content of 301A + 3.5L EcoBoost® V6 + 6-speed SelectShift® automatic transmission with paddle shifters + dual exhaust with bright tips + engine block heater

**Available Options & Packages**

2nd-row console<sup>1</sup>

2nd-row-outboard inflatable safety belts

2nd-row perforated leather-trimmed 40/40 heated reclining bucket seats with autofold

2nd-row refrigerated console<sup>1</sup>

20" polished aluminum wheels with P255/45R20 all-season BSW tires (included with 301A and 303A; n/a with Limited Appearance Package)

All-weather floor mats (1st and 2nd rows)

**Cargo Versatility Package** includes Class III Trailer Tow Package (hitch receiver with 4,500-lb. [2,041-kg] rating,<sup>2</sup> 7-/4-pin connector with wiring harness, engine oil cooler and trailer sway control), all-weather floor mats (1st and 2nd rows), and silver roof-rack side rails (black with Limited Appearance Package)

**Class III Trailer Tow Package** includes hitch receiver with 4,500-lb. (2,041-kg) rating,<sup>2</sup> 7-/4-pin connector with wiring harness, engine oil cooler (non EcoBoost only) and trailer sway control

Dual headrest DVD entertainment system by INVISION™<sup>3</sup>

Engine block heater (included with 3.5L EcoBoost V6)

**Limited Appearance Package** includes Tuxedo Black Metallic-painted roof (monochromatic roof available) and sideview mirror caps, 20" machined aluminum wheels with premium painted pockets, Charcoal Black leather-trimmed seats with Grey perforated inserts, perforated leather-wrapped steering wheel with Meteorite Black bezels, unique instrument panel and door-trim appliques, and unique logo on 1st-row floor mats

Multipanel Vista Roof®

Silver roof-rack side rails (black with Limited Appearance Package)

Two-tone roof

Voice-activated Navigation System

**Available Ford Custom Accessories**

Visit your Ford of Canada Dealer to shop the complete collection

Charcoal Black leather trim with perforated inserts. Available equipment.

Rain-sensing windshield wipers.

2nd-row heated bucket seats.<sup>1</sup> 2nd-row console.<sup>1</sup>

High-intensity discharge (HID) headlamps.



19" Painted Aluminum Standard



20" Polished Aluminum Optional: **300A**  
Included: **301A, 303A**



20" Machined Aluminum with Premium Painted Pockets  
Included: **Limited Appearance Package**

<sup>1</sup>Available feature. <sup>2</sup>See your Ford of Canada Dealer for towing capacity information. <sup>3</sup>Ford Licensed Accessory.

**Exteriors** This helpful guide is intended for selecting an exterior colour – not features, options or a trim level.



**Optional Two-Tone Roof**



○ **Oxford White roof**  
Ruby Red Metallic Tinted Clearcoat lower



● **Ingot Silver Metallic roof**  
Deep Impact Blue Metallic lower



● **Tuxedo Black Metallic roof**  
Ingot Silver Metallic lower

**Interiors**



Exteriors	Interiors									Two-Tone Roof <sup>1</sup>	
	SE	SEL					Limited				
White Platinum Metallic Tri-coat <sup>2,3</sup>		3	4	5	6	7	7	8	9	●	●
Oxford White <sup>3</sup>	1 2	3	4	5	6	7	7	8	9	○	●
Ingot Silver Metallic <sup>3</sup>	1 2	3	4	5	6	7	7	8	9	○	●
Ruby Red Metallic Tinted Clearcoat <sup>2,3</sup>		3	4	5	6	7	7	8	9	○	●
Bronze Fire Metallic Tinted Clearcoat <sup>2,3,4</sup>	1 2	3	4	5	6	7	7	8	9	○	●
Deep Impact Blue Metallic <sup>3</sup>	1 2	3	4	5	6	7	7	8	9	○	●
Magnetic Metallic <sup>3</sup>	1 2	3	4	5	6	7	7	8	9	○	●
Guard Metallic <sup>3</sup>		3	4	5	6	7	7	8	9	○	●
Tuxedo Black Metallic	1 2	3	4	5	6	7	7	8	9	○	●

<sup>1</sup>Two-tone roof available on SEL and LIMITED only. <sup>2</sup>Additional charge. <sup>3</sup>Tuxedo Black Metallic roof requires SEL Appearance Package or Limited Appearance Package. <sup>4</sup>Oxford White roof not available with Dune interior trim. Ingot Silver roof not available with Charcoal Black interior trim. Colours are representative only. See your Ford of Canada Dealer for actual paint/trim options.



*SEL in Guard Metallic accessorized with smoked hood and side window deflectors, rear spoiler, front moulded splash guards, roof side rails, plus roof crossbars and roof-mounted cargo box by THULE<sup>®5</sup>*



*All-weather floor mats*

*Remote Access*

*Rear spoiler*

*Portable DVD Rear-Seat Entertainment System by NextBase<sup>®5</sup>*



**Exterior**

- Flat splash guards
- Full vehicle covers<sup>5</sup>
- Locking fuel plug
- Racks and carriers<sup>5</sup>
- Sportz<sup>®</sup> tent<sup>5</sup>
- Trailer towing accessories
- Wheel lock kit

**Interior**

- Ash cup/coin holders
- Cargo organizers and protectors
- Carpeted floor mats
- Conversation mirror
- Door-sill plates
- Interior light kit

**Electronics**

- Remote start systems
- Vehicle Security System
- Warning sensor systems<sup>5</sup>

<sup>5</sup>Ford Licensed Accessory.



Scan this QR code to learn more about Ford vehicles at [m.ford.ca](http://m.ford.ca). Mobile data rates may apply.

### Our commitment to you: Peace-of-Mind Protection

- Basic Coverage: 3 years/60,000 km
- Powertrain Limited Warranty: 5 years/100,000 km
- Corrosion Perforation Warranty: 5 years/unlimited distance
- Roadside Assistance: 5 years/100,000 km

Certain conditions apply. For more information on these warranties and coverages, ask your local Ford of Canada Dealer or visit [ford.ca](http://ford.ca).

**Ford Extended Service Plan.** Help protect your investment and add to your peace of mind by complementing your vehicle purchase or lease with a Ford Extended Service Plan (ESP). Ford ESP protects you against unexpected repair costs after your Basic Coverage in the New Vehicle Limited Warranty expires by covering many vehicle components. Enjoy the drive even more by complementing your ESP with a prepaid maintenance plan, which covers all required scheduled maintenance for your vehicle, plus 8 wear items. See your Ford of Canada Dealer for details.

**Ford Credit.** Get the ride you want. Whether you plan to lease or finance, you'll find the choices that are right for you at Ford Credit. Ask your local Ford of Canada Dealer for details or check us out at [fordcredit.ca](http://fordcredit.ca).

**Ford Original Accessories** that are properly installed by the authorized Dealer that sold the accessory will be warranted for whichever provides you the greatest benefit: 24 months/unlimited distance, or the remainder of your 3-year/60,000-km New Vehicle Limited Warranty. Ford Licensed Accessories (FLA) are warranted by the accessory manufacturer's warranty. FLA are designed and developed by the accessory manufacturer and have not been designed or tested to Ford Motor Company engineering requirements. Contact your Ford of Canada Dealer for details and/or a copy of all limited warranties.

**For prompt, courteous answers to your questions: Ford Customer Relationship Centre 1-800-565-3673; Ford Credit Customer Service Centre 1-877-636-7346.**

Comparisons based on competitive models (class is Large Utilities), publicly available information and Ford certification data at the time of printing. Some features discussed may be optional. Vehicles shown may contain optional equipment. Features shown may be offered only in combination with other options or subject to additional ordering requirements or limitations. Dimensions shown may vary due to optional features and/or production variability. Information is provided on an "as is" basis and could include technical, typographical or other errors. Ford Motor Company of Canada, Limited makes no warranties, representations, or guarantees of any kind, express or implied, including but not limited to, accuracy, currency, or completeness, the operation of the information, materials, content, availability, and products. Your Ford of Canada Dealer is your best source for up-to-date information. Ford Motor Company of Canada, Limited, reserves the right to change product specifications at any time without incurring obligations. Colours may not be exactly as illustrated due to restrictions of the printing process. Please see your sales consultant for specific colour and model availability.

INVISION is a trademark of VOXX International Corporation. iPod is a trademark of Apple Inc., registered in the U.S. and other countries. "SiriusXM," the SiriusXM logo, channel names and logos are trademarks of SiriusXM Radio Inc., and are used under licence. Sony is a registered trademark of the Sony Corporation. The Bluetooth word mark is a trademark of the Bluetooth SIG, Inc. THULE is a registered trademark of Thule Sweden AB. All other trademarks, service marks, images and logos are property of their respective owners and are displayed in this publication with permission. All rights reserved.

Questions or comments?



[blog.ford.ca](http://blog.ford.ca)



[facebook.com/FordCanada](http://facebook.com/FordCanada)



[twitter.com/FordCanada](http://twitter.com/FordCanada)



[youtube.com/FordCanada](http://youtube.com/FordCanada)



[ford.ca](http://ford.ca)

©2014 Ford Motor Company of Canada, Limited