

# CANYON

2016



**GMC** WE ARE PROFESSIONAL GRADE



# CANYON

Precision matters. It matters in every pound-foot of torque, every inch of fit and finish and every decibel of quiet. That's what drives us to reimagine solutions, search for better ways and create rewarding driving experiences. That's how Canyon is engineered. For 2016, it offers the efficiency and torque of the all-new Duramax 2.8L Turbo Diesel<sup>1</sup> in a highly manoeuvrable truck that's refined with a quiet, comfortable, tech-enabled cabin. Bringing all of this together in one premium package makes Canyon everything you want in a smart-sized truck.

<sup>1</sup>Available fall 2015.





CANYON CREW CAB SLT IN EMERALD GREEN METALLIC  
shown with available equipment.

## SLT: THE PEAK.

To complement its well-appointed cabin, Canyon displays distinctive halogen projector-beam headlamps and signature GMC lighting as well as purposefully designed bodylines sculpted to help deliver efficiency and create a quiet interior. To personalize your Canyon to fit your life, a long list of accessories is available to help enhance its function and appearance. Choose Canyon SLT, and both Crew and Extended Cabs feature additional appointments.

18" POLISHED CAST  
ALUMINUM WHEELS

SLIDING REAR WINDOW

HEATED OUTSIDE  
REARVIEW MIRRORS

PROFESSIONAL  
GRADE ACCESSORIES;  
SEE PAGE 21

BIKE RACK, ASSIST STEPS AND 18" CHROME WHEELS  
are available dealer-installed accessories.

## SLT: BEST OF ALL, THIS IS A TRUCK.

Trucks are built to be rough and tough. But there's no rule that says they have to sound, feel and look that way on the inside. In Canyon SLT Crew and Extended Cabs, you'll find an exceptionally quiet and roomy interior; supportive, comfortably sculpted dual-firmness foam seats; premium materials such as aluminum trim, a soft-wrapped instrument panel and hand-stitched leather-wrapped steering wheel, as well as additional premium features.

LEATHER-APPOINTED  
HEATED FRONT SEATS

REMOTE VEHICLE  
STARTER SYSTEM

POWER DRIVER AND  
FRONT PASSENGER  
SEATS WITH POWER  
LUMBAR

AUTOMATIC CLIMATE  
CONTROL





CANYON CREW CAB SLT INTERIOR IN JET BLACK  
shown with available equipment.



CANYON CREW CAB SLE IN COPPER RED METALLIC  
shown with available equipment.



## SLE: LOAD IT UP. WE DID.

---

Before you even load it up, Canyon SLE packs a lot. It contains a long list of standard features in one smart-sized premium package. Those design elements include a chrome grille surround and 17" cast aluminum wheels, as well as body-colour door handles and mirror caps. It also provides functional equipment such as power mirrors and a driver-side spotter mirror. Like its cargo capacity, the list of Canyon SLE features is robust.

- 
- 

ICONIC GMC  
CHROME GRILLE

FOG LAMPS

EZ-LIFT AND  
LOWER TAILGATE

CHROME BELTLINE  
MOULDINGS

## ALL-TERRAIN: THE TRUCK FOR ALL SURFACES.

Living life to its fullest means not letting unpaved terrain stop you. That's why Canyon, with its available All-Terrain Package, gives you the ability to make your own path. Add a unique interior and you get a truck designed and engineered to meet your high standard of capability.

**AUTOMATIC LOCKING  
REAR DIFFERENTIAL**

**HILL DESCENT CONTROL**

**TRANSFER CASE SHIELD  
ON 4x4 MODELS**

**Z71 OFF-ROAD  
SUSPENSION**

**CANYON ALL-TERRAIN CREW CAB SLE IN CYBER GREY METALLIC**  
shown with available equipment.

**CANYON ALL-TERRAIN EXTENDED CAB INTERIOR IN JET BLACK**  
shown with available equipment.



**5" RECTANGULAR ASSIST STEPS**  
are available dealer-installed accessories.



**EXCLUSIVE ALL-TERRAIN CABIN DESIGN** You'll find carbon-fibre-inspired accents, unique All-Terrain seating with All-Terrain logo and contrasting red stitching, special dark aluminum IP material and other All-Terrain appointments.

**Z71 OFF-ROAD SUSPENSION** The legendary Z71 suspension allows you to go beyond mere sightseeing to truly explore the great outdoors.

**AUTOMATIC LOCKING REAR DIFFERENTIAL** It directs power to the wheel with the most traction on loose gravel or slippery surfaces.

**TRANSFER CASE SHIELD** Venturing off-pavement means encountering just about anything. The 4x4 models have the added protection to help safeguard vital components under the truck.

**ALL-TERRAIN WHEELS** 17" Dark Argent metallic cast-aluminum wheels with painted accents are shown.

**BODY-COLOUR ACCENTS** Front and rear bumpers, as well as the grille surround, match the vehicle body colour.

**HILL DESCENT CONTROL** This feature uses anti-lock braking for a smooth and controlled hill descent in rough terrain without you having to touch the brake pedal.

PRECISION ENGINEERING RUNS IN THE FAMILY.



SIERRA 3500 DENALI HD CREW CAB IN ONYX BLACK (left)  
CANYON CREW CAB SLT IN BRONZE ALLOY METALLIC (centre)  
SIERRA 1500 ALL-TERRAIN CREW CAB SLT IN IRIDIUM METALLIC (right)  
All vehicles shown with available equipment.



## YOUR FOUR-WHEEL MOBILE DEVICE.

Your always-connected world shouldn't stop because you're on the go. In the GMC Canyon, technologies such as available OnStar 4G LTE<sup>1</sup> with a built-in Wi-Fi<sup>®</sup> hotspot allow you to stay in touch on the road.



**ONSTAR 4G LTE WI-FI<sup>1</sup>** Available OnStar 4G LTE offers a built-in Wi-Fi hotspot (with 3-month/3 GB trial, whichever comes first) for a speedy Internet connection for Web-enabled devices. It's reliably fast, easy to use and handles up to seven devices.<sup>2</sup>

**POWER SUPPLY** Depending on the model and options you choose, you will have a convenient power supply: up to four USB ports<sup>3</sup> and two auxiliary 12-volt power outlets keep first- and second-row passengers connected and powered up.



**INTEGRATED COMMUNICATION** New for 2016 is available support for Apple CarPlay.<sup>TM4</sup> It's a smart way to use your iPhone<sup>®</sup> inside your Canyon. Now many of the functions you use your phone for—entertainment, communication and directions—appear on the built-in audio system display. There's also the available GMC Colour Touch Audio System with IntelliLink,<sup>5</sup> featuring a full-colour 203 mm diagonal screen for easy viewing and hands-free, voice-activated control of your smartphone.



**REAR VISION CAMERA** Standard on all models, its dynamic grid lines provide the perfect guide when backing up or hitching a trailer. Shown with the available 203 mm diagonal Colour Touch Audio System.

**VOICE AND TOUCH-SCREEN NAVIGATION**<sup>6</sup> In response to your voice or touch, Canyon's available Navigation System displays 2-D or 3-D map graphics on the 203 mm diagonal centre-mounted screen. NavTraffic<sup>7</sup> (3 trial months of SiriusXM) incorporates real-time traffic and road conditions, directing you toward the most efficient route.



**CENTRE PANEL INSTRUMENTATION** Access to controls and power sources is centrally located. This array of switches puts Canyon's important functions at your fingertips.

**SAFETY ALERT TECHNOLOGIES** Canyon offers an available Driver Alert Package, including Forward Collision Alert and Lane Departure Warning.

**BOSE® PREMIUM SOUND** The optional Bose Premium sound system is engineered to get you closer to the realism of a live performance with seven speakers to make sure you hear every note.



**DRIVER INFORMATION CENTRE** To make information easy to view at a glance, GMC designers created an available 107 mm diagonal multicolour Driver Information Centre (DIC). The DIC's menu can be navigated with steering-wheel controls.

**AUTOMATIC CLIMATE CONTROL** Canyon offers an available heating and air-conditioning system that allows you to simply set a desired temperature that is maintained automatically.

<sup>1</sup>Visit onstar.ca for coverage maps, details and system limitations. Services vary by model, conditions and geographical and technical restrictions. OnStar with 4G LTE connectivity is available on select vehicle models and in select markets. Available Wi-Fi hotspot requires a data plan. Customers will be able to access OnStar services only if they accept the OnStar User Terms, Privacy Statement and Software Terms. OnStar acts as a link to existing emergency service providers. Not all vehicles may transmit all crash data. After the trial period (if applicable), an active OnStar service plan is required. <sup>2</sup>Devices must be WPA2-compliant. Wi-Fi devices manufactured prior to 2006 may not be compatible. Please consult your device manufacturer for information regarding the WPA2 security protocol and Wi-Fi device compatibility. Vehicle must be started or in accessory mode to access Wi-Fi. Visit onstar.ca for system details and limitations. <sup>3</sup>Not compatible with all devices. <sup>4</sup>Vehicle user interface is a product of Apple® and Apple's® terms and privacy statements apply. Requires compatible smartphone. Data plan rates apply. <sup>5</sup>Full functionality requires compatible Bluetooth® and smartphone, and USB connectivity for some devices. Visit intellilink.gmc.gm.ca for more details. <sup>6</sup>At time of printing, detailed map coverage is available for most major urban areas of the United States and for certain metropolitan areas of Canada (Vancouver, Calgary, Edmonton, Winnipeg, Windsor, London, Toronto, Ottawa, Montreal, Quebec City and Halifax). Coverage is significantly limited outside these areas. <sup>7</sup>Available in 10 Canadian provinces and the 48 contiguous United States. Subscription sold separately after trial period. If you decide to continue your service at the end of your trial subscription, the plan you choose will automatically renew and bill at then-current rates until you call 1-877-209-0079 to cancel. Other fees and taxes will apply. All fees and programming subject to change. See SiriusXM "Terms and Conditions" and complete details at siriusxm.ca.



## A NEW LEGEND IS BORN.

Like the legendary Duramax V8, Canyon's available all-new Duramax 2.8L I-4 Turbo Diesel engine delivers abundant torque and horsepower—doing it all with remarkable efficiency. In fact, no other small pickup competitor<sup>1</sup> offers an available diesel engine. So when it comes to moving Canyon down the road or trail, all three of its engine options boast efficiency without sacrificing power, torque or a smooth ride.

### ENGINES

**DURAMAX 2.8L I-4 TURBO DIESEL** The Duramax 2.8L I-4 Turbo Diesel packs the power—an estimated 181 horsepower at 3400 rpm and 369 lb.-ft. of torque at 2000 rpm—to tackle the toughest trails. The Duramax is B20 Biodiesel capable. It features a variable-geometry turbocharger for optimal power and efficiency across the rpm band and a balance shaft for greater smoothness. It also includes an exhaust brake that uses engine compression to slow the truck down. The engine is mated to a 6-speed automatic transmission.

**3.6L V6 VVT** Engineered for responsiveness at all speeds, the 3.6L is the ideal blend of horsepower, torque and efficiency. With a direct-injected 24-valve, dual-overhead-cam design, it accelerates smoothly and quickly for confident highway passing and merging.

**2.5L I-4 ENGINE** Canyon benefits from the next generation of large-displacement four-cylinder engines engineered to generate surprising horsepower and torque to produce greater capability. The engine is also tuned to deliver more torque at a lower rpm for strong acceleration.

<sup>1</sup>Comparison based on [wardsauto.com](http://wardsauto.com) 2015 Small Pickup segment and latest competitive information available at time of printing. Excludes other GM vehicles.



**ACTIVE GRILLE SHUTTERS** When equipped with a gas engine, grille shutters automatically close to maximize aerodynamic efficiency when conditions are right. The shutters are designed to remain open in situations where max airflow is needed.

**DIRECT INJECTION (DI)** By injecting fuel directly into the combustion chamber at high pressure, fast and efficient combustion is achieved. DI enables higher torque and power and improved vehicle performance while improving efficiency.

**VARIABLE VALVE TIMING (VVT)** For responsiveness in low-speed city driving and bold power for open-road passing or trailering, Canyon gas engines feature continuously VVT. It monitors and adjusts valve open and close points for near-peak levels of torque across the entire range of engine speeds.

**ELECTRONIC THROTTLE CONTROL** Delivers outstanding response and allows tailoring of the throttle progression to the requirements of the vehicle and your driving needs. A sensor measures pedal position, signalling the throttle to open at the precise rate and angle.

#### **CHASSIS**

**HYDRAULIC ENGINE MOUNTS** These mounts reduce engine vibrations for a smoother, quieter ride.

**CORROSION-RESISTANT DURALIFE BRAKE ROTORS** Engineers invented a patented, GM-exclusive corrosion protection process designed to help double rotor life—which, of course, reduces maintenance costs—by hardening rotor surfaces. It protects against rust to help prevent steering-wheel shudder during braking.

**AUTOMATIC LOCKING REAR DIFFERENTIAL** Canyon offers this available feature that can lock both rear wheels so they can gain traction on loose gravel or slippery surfaces.

**AUTOTRAC 4X4 TRANSFER CASE** This available 4x4 system is ideal when traction conditions are variable. When driving in AUTO, the front axle is engaged and power is sent to the front and rear wheels automatically based on the driving situation.

**ELECTRIC POWER STEERING** This feature helps improve fuel efficiency versus engine-powered systems. The variable assist is tuned to provide less assist at highway speeds for a solid on-centre feel, and more assist for less steering effort when you're manoeuvring in tight spaces.

## A LOT OF THINKING WENT IN HERE.

---

The thought was, “How can a cargo box do more than just carry your gear?” That’s how we arrived at innovations that help you get into the bed easily as well as organize and secure cargo. In addition, Canyon is engineered to deliver exceptional payload capability, thanks to its large cargo box.



**CORNERSTEP REAR BUMPER** Integrated into the corners, the bumper steps make it easy to access the cargo box. The deep tread of the step accommodates large boots, and hand assists on the top of the side rails help give you a boost into the bed.

**EZ-LIFT AND LOWER TAILGATE** Loading the cargo box takes less effort thanks to an available EZ-Lift and Lower Tailgate.

**REMOVABLE AND LOCKING TAILGATE** Allows the tailgate to be removed easily when you need a wide-open cargo box. It locks to secure cargo and help prevent tailgate theft.

**MOVABLE TIE-DOWN HOOKS** Four patented, load-bearing upper tie-down hooks are available. They can be repositioned in 13 locations around the box depending on the cargo being secured.

## PUSHED FURTHER SO YOU CAN PULL MORE.

Canyon once again defies its size by being strong enough to trailer up to 3493 kg<sup>1</sup> when equipped with the all-new Duramax 2.8L I-4 Turbo Diesel and up to 3175 kg with the V6 engine and the Trailering Package. The gas I-4 and V6 models can trailer up to 1588 kg<sup>1</sup> with the bumper-mounted ball hitch. Choose the Duramax engine, and an integrated Trailer Brake Controller and Diesel Exhaust Brake are included to make Canyon the first in its class<sup>2</sup> to offer these important control features.

<sup>1</sup>Canyon's 3493 kg rating requires Crew Cab model, available Trailering Package and Duramax 2.8L I-4 Turbo Diesel engine. Before you buy a vehicle or use it for trailering, carefully review the trailering section of the Owner's Manual. The weight of passengers, cargo and options or accessories may reduce the amount you can tow. <sup>2</sup>Comparison based on wardsauto.com 2015 Small Pickup segment and latest competitive information available at time of printing. Excludes other GM vehicles.



CANYON CREW CAB SLT IN QUICKSILVER METALLIC  
shown with available equipment.

**FULLY BOXED FRAME** Canyon's frame is constructed with at least 70 percent high-strength steel for maximum people- and cargo-carrying capability.

**TRAILERING PACKAGE** On V6 and Duramax diesel models, achieve max trailering capacity with this available feature. Includes trailer hitch and 7-pin and 4-pin connectors.

**HILL START ASSIST** Sensors automatically detect when Canyon is on a 5 percent grade or more. The system holds the brakes momentarily until the accelerator is pressed, preventing rollback.

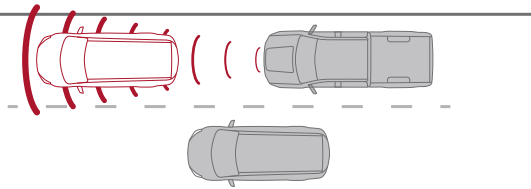
**TOW/HAUL MODE** To give you even more power to accelerate when trailering or hauling heavy loads, Tow/Haul mode on V6 and Duramax diesel models raises automatic-transmission upshift points.

## AVOID TROUBLE DOWN THE ROAD, AND RIGHT IN FRONT OF YOU.

Canyon is the first in its class<sup>1</sup> to offer collision-avoidance technologies often found in luxury vehicles—Forward Collision Alert and Lane Departure Warning. They are engineered to help enhance your awareness of the road and surrounding vehicles.

**DRIVER AWARENESS** Safety features are no substitute for the driver's responsibility to operate the vehicle in a safe manner. The driver should remain attentive to traffic, surroundings and road conditions at all times. Read the Canyon Owner's Manual for more important safety information.

**FORWARD COLLISION ALERT** The available Forward Collision Alert helps warn you when you're rapidly approaching another vehicle and it appears a collision is imminent.



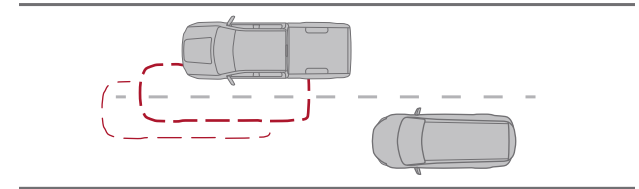
**STABILITRAK** Canyon's electronic stability control system helps improve stability by detecting and reducing traction loss.

**CHILD SEAT ACCOMMODATION** On Extended Cab models, the passenger-side rear-seat head restraint can be removed and inserted to extend the seat bottom to provide support for a variety of forward-facing child seats.

**THEFT DETERRENCE** To help ensure that it remains in your possession, Canyon offers theft-deterrence technologies to keep potential thieves at bay.

**TIRE PRESSURE MONITORING SYSTEM**<sup>2</sup> It uses sensors inside the wheels to alert you to the tires' status and inflation level through the Driver Information Centre.

**LANE DEPARTURE WARNING** This available technology alerts you if you wander from your lane without signalling while travelling over 56 km/h.



**AIRBAGS**<sup>3</sup> Six standard bags provide protection, including dual-stage frontal, head-curtain side with rollover protection, seat-mounted side-impact and a 360-degree sensor system to ensure proper bag deployment.

## PROFESSIONAL GRADE PROTECTION.

GMC Pro Grade Protection is standard on every 2016 Canyon. From Lube-Oil-Filter Maintenance to protecting your entire vehicle, you can drive with confidence.

**2-YEAR/48,000 KM LUBE-OIL-FILTER MAINTENANCE**<sup>4</sup>

**3-YEAR/60,000 KM NEW-VEHICLE LIMITED WARRANTY**<sup>5</sup>

**5-YEAR/160,000 KM POWERTRAIN LIMITED WARRANTY**<sup>5</sup>

## WE'RE AS CLOSE AS THE BLUE BUTTON.



Standard for 6 months, the OnStar Guidance Plan (trial excludes Hands-Free Calling minutes) lets you connect to an OnStar Advisor just by pressing the blue OnStar button in your Canyon.

**ONSTAR WITH 4G LTE WI-FI HOTSPOT<sup>6</sup>** Now your Canyon has a built-in Wi-Fi hotspot for connecting up to seven devices.<sup>7</sup> Requires a data plan after the 3-month trial period (3 months of data or 3 GB, whichever comes first).

**ONSTAR BASIC PLAN<sup>8</sup>** This gives you a powerful connection to your vehicle and the world around you and is standard for 5 years at no additional cost to you. You'll have access to select services, which include limited features of the OnStar RemoteLink mobile app<sup>9</sup> that lets you remote-start your vehicle (if equipped) and manage your vehicle's Wi-Fi hotspot (if equipped). Plus, lock or unlock your doors—all from your mobile device. Your vehicle can run diagnostic checks on itself and remind you of servicing needs by e-mail.

**AUTOMATIC CRASH RESPONSE** In a crash, built-in sensors automatically alert an OnStar Advisor who is connected into your vehicle to see if you need help—even if you can't ask for it.

**EMERGENCY SERVICES** One push of the red emergency button gives you a priority connection to a specially trained OnStar Advisor who can direct emergency services to your exact location and offer critical assistance until help arrives. With OnStar, you're never alone.

**CRISIS ASSIST** During severe weather or other crisis situations, OnStar provides a quick, central point of contact when you need emergency assistance, navigation help or information.

**ROADSIDE ASSISTANCE<sup>10</sup>** If you're stranded, have a flat tire or need a tow truck, just ask an OnStar Advisor to get help to your location to get you back on the road quickly.

**STOLEN VEHICLE ASSISTANCE<sup>11</sup>** If your vehicle is stolen, OnStar can use GPS to pinpoint and work with authorities to quickly help recover it. On many models, an Advisor can send a signal to slow the vehicle or prevent it from restarting.

**TURN-BY-TURN NAVIGATION** Push a button and tell an Advisor where you want to go. Directions are quickly downloaded to your vehicle, and a voice calls out every turn. An Advisor can also help you with a database of more than 1 million points of interest. To plan routes in advance, you can send directions to your vehicle through an Advisor or the RemoteLink mobile app.

**ONSTAR REMOTELINK MOBILE APP<sup>9</sup>** You can remotely start your vehicle, lock or unlock your doors, honk your horn and flash your lights. You can also send directions to your vehicle through your smartphone.

**REMOTE SERVICES<sup>12</sup>** A call to an OnStar Advisor can send a signal to unlock your doors or honk the horn and flash the lights.

**HANDS-FREE CALLING<sup>13</sup>** Your vehicle has built-in Hands-Free Calling to help keep you safely connected when your cellphone isn't available. Choose from minute bundles or a minutes-per-month plan.

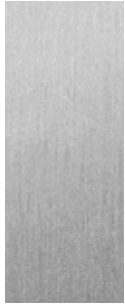
**ATYOURSERVICE<sup>14</sup>** Life just got easier and more affordable with the personalized connection of AtYourService. Trusted Advisors can help you locate hotels and even book your room.

**ONSTAR VEHICLE DIAGNOSTICS** As part of the Basic Plan,<sup>8</sup> every month your vehicle runs a thorough check of your engine, transmission, anti-lock brakes and more, and e-mails you the results.

**DEALER MAINTENANCE NOTIFICATION** Is it time for service? You'll always know because your vehicle can e-mail your Vehicle Diagnostics report to the dealer when it's time, and the dealer will contact you to set up a service appointment.

<sup>1</sup>Comparison based on wardsauto.com 2015 Small Pickup segment and latest competitive information available at time of printing. Excludes other GM vehicles. <sup>2</sup>Does not monitor spare tire. <sup>3</sup>Always use safety belts and the correct restraint for your child's age and size. Even in vehicles equipped with the Passenger Sensing System, children are safer when properly secured in a rear seat in the appropriate infant, child or booster seat. Never place a rear-facing infant restraint in the front seat of any vehicle equipped with a passenger airbag. See the vehicle Owner's Manual and child safety seat instructions for more safety information. <sup>4</sup>The 2-Year Scheduled LDF Maintenance Program provides eligible customers in Canada who have purchased, leased or financed a new eligible 2016 MY Chevrolet, Buick or GMC vehicle (excluding Spark EV) with an ACDelco oil and filter change, in accordance with the Oil Life Monitoring System and the Owner's Manual, for 2 years or 48,000 km, whichever occurs first, with a limit of four lube-oil-filter services in total, performed at participating GM dealers. Fluid top-offs, inspections, tire rotations, wheel alignments and balancing, etc., are not covered. This offer may not be redeemed for cash and may not be combined with certain other consumer incentives available on GM vehicles. General Motors of Canada Limited reserves the right to amend or terminate this offer, in whole or in part, at any time without prior notice. Additional conditions and limitations apply. See dealer for details. <sup>5</sup>Whichever comes first. Conditions and limitations apply, see dealer for details. <sup>6</sup>Visit onstar.ca for coverage maps, details and system limitations. Services vary by model, conditions and geographical and technical restrictions. OnStar with 4G LTE connectivity is available on select vehicle models and in select markets. Available Wi-Fi hotspot requires a data plan. Customers will be able to access OnStar services only if they accept the OnStar User Terms, Privacy Statement and Software Terms. OnStar acts as a link to existing emergency service providers. Not all vehicles may transmit all crash data. After the trial period (if applicable), an active OnStar service plan is required. <sup>7</sup>Devices must be WPA2-compliant. Wi-Fi devices manufactured prior to 2006 may not be compatible. Please consult your device manufacturer for information regarding the WPA2 security protocol and Wi-Fi device compatibility. Vehicle must be started or in accessory mode to access Wi-Fi. Visit onstar.ca for system details and limitations. <sup>8</sup>The OnStar Basic Plan is available for 5 years from the date of delivery of eligible new 2016 model year and newer vehicles and is transferable to subsequent owners for the remaining term. The Basic Plan includes access to: (1) monthly OnStar Vehicle Diagnostics e-mails (capabilities vary by model); (2) Dealer Maintenance Notification; and (3) limited OnStar RemoteLink mobile app services, which include remote start (requires factory-installed and -enabled remote start system), remote lock/unlock doors (requires automatic locks) and remote horn and lights activation. The OnStar RemoteLink mobile app is available on select Apple,<sup>®</sup> Android,<sup>™</sup> BlackBerry<sup>®</sup> and Windows<sup>®</sup> devices. Visit onstar.ca for vehicle availability, coverage map, details and system limitations. The OnStar Basic Plan does not include any Emergency Services, Automatic Crash Response, Stolen Vehicle Assistance, live Advisor service or Hands-Free Calling. These and other services are available under a paid plan. If you sell your vehicle or wish to cancel use of Basic Plan services, you must contact OnStar at 1-888-4-ONSTAR (1-888-466-7827). <sup>9</sup>Available on select Apple,<sup>®</sup> Android, BlackBerry and Windows devices. Requires an active OnStar service plan. Services vary by device, vehicle, conditions and the type of service plan you have. Please visit onstar.ca for vehicle availability, system limitations, geographical and technical restrictions and further details. <sup>10</sup>Roadside service provided by Allstate Roadside Services. <sup>11</sup>Services vary by model, conditions and geographical and technical restrictions. Stolen Vehicle Slowdown and Remote Ignition Block are available on select 2009 and newer GM vehicles. <sup>12</sup>Visit onstar.ca for coverage map, details and system limitations. Services vary by model and conditions. Unlock feature requires automatic door locks. Remote start requires factory-installed and -enabled remote start system. <sup>13</sup>OnStar Hands-Free Calling requires existing OnStar service plan and available prepaid minutes. Not available in certain markets. Calls may be made to the U.S. and Canada only. Minutes good for the specified term or until service plan expires, whichever comes first. Visit onstar.ca for coverage maps, details and system limitations (including geographic and technical restrictions). <sup>14</sup>Third-party trademarks are the property of their respective third-party owners, used under agreement.

ACCENTS



Axiom Aluminum



Smoked Mahogany Wood Tone

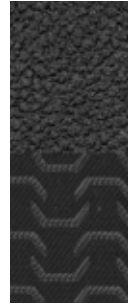
INTERIOR COLOURS AND SEATING SURFACES



Jet Black/Dark Ash Vinyl



Jet Black/Dark Ash Cloth



Jet Black/Jet Black Cloth



Cocoa/Dune Cloth



Jet Black/Jet Black Leather-Appointed



Cocoa/Dune Leather-Appointed

ALL-TERRAIN PACKAGE



Dark Aluminum



Off-Road Carbon Accent



Jet Black/Jet Black Cloth with Cobalt Red Accents

SL	–	–	●	–	–	–	–	–	–	–	–	–	–
CANYON	–	–	○	●	–	–	–	–	–	–	–	–	–
SLE	●	●	–	–	●	●	–	–	–	○	○	○	○
SLT	●	●	–	–	–	–	●	●	–	–	–	–	–

KEY ● STANDARD ○ AVAILABLE – NOT AVAILABLE

EXTERIOR COLOURS



Cardinal Red<sup>1</sup>



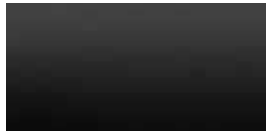
Emerald Green Metallic<sup>1,2,3</sup>



Copper Red Metallic<sup>1,2,3</sup>



Quicksilver Metallic<sup>2</sup>



Onyx Black



Cyber Grey Metallic<sup>2</sup>



Bronze Alloy Metallic<sup>1,2,3</sup>



Summit White<sup>3</sup>

WHEELS



RS1 16" Ultra Silver Metallic Standard on SL and Canyon



Q5W 17" Blade Silver Metallic Cast Aluminum Standard on SLE



RT1U 17" Dark Argent Metallic Cast Aluminum Standard on All-Terrain



RT5 18" Polished Cast Aluminum Standard On SLT

ACCESSORY WHEELS<sup>4</sup>



SE7 18" Aluminum Ultra-Bright with Dark Argent Paint



SE5 18" Aluminum Chrome

<sup>1</sup>Not available with SL trim. <sup>2</sup>Extra-cost colour. <sup>3</sup>Not available with All-Terrain Package. See your GMC dealer for more exterior colour details. <sup>4</sup>Use only GM-approved tire and wheel combinations. Unapproved combinations may change the vehicle's performance characteristics. For approved tire and wheel combinations and other important information, go to gmaccessories.ca or see your dealer for details.

## IT'S NOT ONLY HOW MUCH GEAR YOU CARRY. IT'S HOW YOU CARRY YOUR GEAR.

To help you customize your Canyon, GMC Accessories are engineered and tested to meet our Professional Grade standards.

**GearOn PACKAGES** Canyon is all about helping carry more of your gear with you, so GearOn combines individual accessories into comprehensive packages. For enhanced cargo versatility, the new GearOn Rack System features interchangeable parts to meet your lifestyle and work needs. Your dealer can provide the specifics for the following packages:

**GearOn Divider Package**—Cargo tie-down rings and a bed cargo divider allow you to divide gear into compartments. Shown top left.

**GearOn Bars Package**—Cargo tie-down rings and tiered storage cross rails help you secure cargo of varying shapes and sizes.

**GearOn Utility Rack Package**—Utility rack stanchions and tiered storage cross rails allow you to haul oversized items.



**BED MAT** Reduce cargo shifting with this easy-to-install, nonskid, nylon-reinforced rubber bed mat designed to fit the contours of your Canyon. Fully ribbed construction helps protect your cargo and the truck bed and simplifies cleaning. Withstands extreme temperatures. Tailgate liner available separately.

**ASSIST STEPS** Stylish steps with textured step pads make it easier to get into and out of your Canyon. They're available in 3" round step bar in black finish or 5" rectangular, with either chrome or black powder-coat finish. Both finishes add great style and excellent corrosion protection.

**BEDLINER** Protect the bed of your Canyon with this durable bedliner. It's fully ribbed, with a skid-resistant floor to help minimize load shifting. Black with GMC logo.

**TOOLBOX** This hardworking toolbox can handle up to 113 kg of storage.<sup>1</sup> It mounts securely to the bed of your Canyon without drilling. It features a removable sliding tray and an integrated handle that make it easy to remove and carry.

**HOOD PROTECTOR** This custom-designed and -moulded hood protector deflects road debris while helping to shield the hood of your Canyon. It provides a precise fit by following the contour of the hood.



**PREMIUM FLOOR LINERS** Canyon's all-new floor liners take all-weather floor-mat coverage further with raised edges to protect floor and trim contours. They provide better carpet protection than other liners and superior fit-and-finish, while their stay-put anchoring system keeps them in place during heavy use. The rear liners feature an easy-to-install and -remove two-piece design. Shown above.

**TONNEAU COVER** The soft folding tonneau cover is constructed of durable, lightweight black-grained vinyl to help protect truck bed cargo from the elements. The tri-folding design allows for quick and easy installation and removal.

**BODY-COLOUR GRILLE** Choose this stylish grille to give your Canyon a monochromatic appearance. The dealer-installed accessory is durable and adds a stylish flair to your Canyon.

**18" WHEELS**<sup>2</sup> Personalize your Canyon with 18" wheels. Stand out from the crowd with accessory wheels (shown on page 20) designed, engineered, tested and approved by GMC Accessories. All wheels feature a brilliant, durable finish and GMC logo centre caps.

**POLISHED EXHAUST TIP** Add a sporty appearance to your Canyon with a dual-walled, angle-cut exhaust tip.

<sup>1</sup>Cargo and load capacity limited by weight and distribution. <sup>2</sup>Use only GM-approved tire and wheel combinations. Unapproved combinations may change the vehicle's performance characteristics. For approved tire and wheel combinations and other important information, go to [gmcaccessories.ca](http://gmcaccessories.ca) or see your dealer for details.

SPECIFICATIONS			
ENGINES	2.5L I-4 VVT DI (LCV)	3.6L V6 VVT DI (LFX)	DURAMAX 2.8L I-4 TURBO DIESEL (LWN)
FUEL TYPE	Gasoline	Gasoline	Diesel (B20 Biodiesel capable)
CAPACITY	2.5 litres	3.6 litres	2.8 litres
SAE NET HORSEPOWER @ RPM	200@6300	305@6800	181@3400 (est.)
SAE NET TORQUE @ RPM (lb.-ft.)	191@4400	269@4000	369@2000 (est.)
ENGINE/MODEL AVAILABILITY			
Extended Cab, 4x2	●	○ (Not available on SL trim)	–
Extended Cab, 4x4	●	○	–
Crew Cab, Short Box 4x2	●	○	○
Crew Cab, Short Box 4x4	–	●	○
Crew Cab, Long Box 4x2	–	●	○
Crew Cab, Long Box 4x4	–	●	○
TRANSMISSIONS	6-speed manual transmission (4x2 Extended Cab SL and Canyon 2.5L I-4 models only) Electronically controlled 6-speed automatic transmission with overdrive, electronic engine grade braking and Tow/Haul mode on V6, Duramax Diesel and all 4x4 models Electronically controlled 6-speed automatic transmission with overdrive available on most 2.5L I-4 models		

TRAILERING AND PAYLOAD							
CAB TYPE	EXTENDED CAB		CREW CAB, SHORT BOX			CREW CAB, LONG BOX	
Engine	2.5L I-4	3.6L V6	2.5L I-4	3.6L V6	2.8L I-4 (Diesel)	3.6L V6	2.8L I-4 (Diesel)
Maximum Payload <sup>1</sup> (kg) (4x2/4x4)	676/667	735/721	676/–	735/703	683/667	712/667	673/644
Axle Ratio (4x2/4x4)	4.10/4.10	3.42/3.42	4.10/–	3.42/3.42	3.42/3.42	3.42/3.42	3.42/3.42
Maximum Trailer Weight <sup>2</sup> (kg) (4x2/4x4)	1588/1588	3175 <sup>3</sup> /3175 <sup>3</sup>	1588/–	3175 <sup>3</sup> /3175 <sup>3</sup>	3493 <sup>3</sup> /3447 <sup>3</sup>	3175 <sup>3</sup> /3175 <sup>3</sup>	3493 <sup>3</sup> /3447 <sup>3</sup>

DIMENSIONS						
CARGO DIMENSIONS	EXTENDED CAB		CREW CAB, SHORT BOX		CREW CAB, LONG BOX	
Cargo Volume (litres) <sup>4</sup>	1413		1169		1413	
Inside Width Between Wheelhousing (mm)	1128		1128		1128	
Box Length at Floor (mm)	1880		1567		1880	
EXTERIOR DIMENSIONS	EXTENDED CAB		CREW CAB, SHORT BOX		CREW CAB, LONG BOX	
Height (mm)	1788		1796		1793	
Overall Length (mm)	5395		5395		5705	
Body Width (mm)	1887		1887		1887	
Wheelbase (mm)	3259		3259		3569	

STANDARD TECHNICAL DATA				
DRIVE TYPE	4x2		4x4	
BRAKES All models: Power 4-wheel anti-lock braking system	Front disc/rear disc (w/Duralife rotors)		Front disc/rear disc (w/Duralife rotors)	
STEERING	Electric power rack-and-pinion with variable assist		Electric power rack-and-pinion with variable assist	
FUEL TANK CAPACITY litres (imp. gal.)	79 (17)		79 (17)	
GVWR <sup>5</sup> (Gross Vehicle Weight Rating, kg)				
Extended Cab (Gas)	2449-2586		2540-2676	
Crew Cab (Gas)	2495-2631		2722	
Crew Cab (Diesel)	2722		2812	

<sup>1</sup>These maximum payload ratings are intended for comparison purposes only. Before you buy a vehicle or use it to haul people or cargo, carefully review the vehicle loading section of the Owner's Manual and check the carrying capacity of your specific vehicle on the label on the inside of the driver's door jamb. <sup>2</sup>Before you buy a vehicle or use it for trailering, carefully review the trailering section of the Owner's Manual. The weight of passengers, cargo and options or accessories may reduce the amount you can tow. <sup>3</sup>Requires Trailering Package. <sup>4</sup>Cargo and load capacity limited by weight and distribution. <sup>5</sup>When properly equipped; includes weight of vehicle, passengers, cargo and equipment.

TRIM LEVELS

SL  
CANYON  
SLE  
SLT

CONFIGURATIONS

EXTENDED CAB, 4x2	○	○	○	○
EXTENDED CAB, 4x4	-	○	○	○
CREW CAB, SHORT BOX 4x2	-	○	○	○
CREW CAB, SHORT BOX 4x4	-	-	○	○
CREW CAB, LONG BOX 4x2	-	○	○	○
CREW CAB, LONG BOX 4x4	-	-	○	○

MECHANICAL

<b>BATTERY</b> Heavy-duty maintenance-free with rundown protection and retained accessory power	●	●	●	●
<b>BRAKES</b> 4-wheel anti-lock, 4-wheel disc with Duralife rotors	●	●	●	●
<b>EATON® HEAVY-DUTY AUTOMATIC LOCKING REAR DIFFERENTIAL</b> On Canyon 4x2 models, not available with 6-speed manual transmission. On Canyon and SLE models, requires Trailing Package when 3.6L V6 engine or Duramax 2.8L Turbo Diesel engine is ordered. Included on 4x4 SLE models.	-	○	○	●
<b>ENGINE</b> 2.5L I-4, DI, DOHC, VVT. Not available on Crew Cab Long Box or 4x4 Crew Cab configurations.	●	●	●	-
Duramax 2.8L Turbo Diesel, DI, I-4. Not available on Extended Cab configurations. On SLE models, requires SLE Convenience Package, Trailing Package or All-Terrain Package. On SLT models, requires Trailing Package and Driver Alert Package.	-	-	○	○
3.6L V6, DI, DOHC, VVT. Standard on Crew Cab Long Box and 4x4 Crew Cab configurations.	-	○	○	●
<b>ENGINE BLOCK HEATER</b>	○	○	○	○
<b>EXHAUST BRAKE, SWITCH-ACTIVATED</b> Included and only available with Duramax 2.8L Turbo Diesel engine. Not available on Extended Cab models.	-	-	○	○
<b>HILL DESCENT CONTROL</b> Included and only available with All-Terrain Package	-	-	○	-
<b>INTEGRATED TRAILER BRAKE CONTROLLER</b> Included and only available with Duramax 2.8L Turbo Diesel engine	-	-	○	○
<b>STABILITRAK</b> Stability control system. Includes Trailer Sway Control.	●	●	●	●
<b>OFF-ROAD SUSPENSION PACKAGE</b> Included and only available with All-Terrain Package	-	-	○	-
<b>TOW/HAUL MODE</b> Included and only available with Duramax 2.8L Turbo Diesel or 3.6L V6 engines	-	○	○	●
<b>TRACTION CONTROL</b> Electronic	●	●	●	●
<b>TRAILERING PACKAGE</b> Includes trailer hitch and 7-pin and 4-pin connector. On Canyon models, requires 3.6L V6 engine and automatic locking rear differential. On SLE and SLT models, requires 3.6L V6 engine or Duramax 2.8L Turbo Diesel engine and automatic locking rear differential. Not available with 2.5L I-4 engine. Included on SLE and SLT Crew Cab Long Box models.	-	○	○	○
<b>TRANSFER CASE</b> Electric, 2-speed AutoTrac (not available on 4x2 models)	-	●	●	●
<b>TRANSFER CASE SHIELD</b> Included and only available with All-Terrain Package on 4x4 models	-	-	○	-
<b>TRANSMISSION</b> 6-speed manual. Standard on Canyon Extended Cab 4x2 models only. On Canyon Extended Cab 4x2 model, requires 2.5L I-4 engine.	●	●	-	-
6-speed automatic, electronically controlled with overdrive. Includes Cruise Grade Braking and Powertrain Grade Braking. Standard on 4x4 and all Crew Cab models.	-	○	●	●

KEY ● STANDARD ○ AVAILABLE - NOT AVAILABLE

TRIM LEVELS

SL  
CANYON  
SLE  
SLT

INSTRUMENTATION AND CONTROLS

<b>CRUISE CONTROL</b> Electronic, automatic. On Canyon models, included and only available with Canyon Convenience Package.	-	○	●	●
<b>DEFOGGER</b> Rear-window electric. On Canyon models, included and only available with Canyon Convenience Package.	-	○	●	●
<b>DRIVER INFORMATION CENTRE</b> With monochromatic display. Provides warning messages, odometer, trip odometer and basic vehicle information.	●	●	-	-
With multicolour display. Includes driver personalization, warning messages, odometer, trip odometer and vehicle information.	-	-	●	●
<b>STEERING COLUMN</b> Tilt-Wheel, manual	●	●	-	-
Tilt and telescopic, manual	-	-	●	●
<b>STEERING WHEEL</b> Deluxe	●	●	-	-
Leather-wrapped with mounted audio controls	-	-	●	●

SEATING

<b>SEATS</b> Vinyl front buckets	●	-	-	-
Cloth front buckets	-	●	●	-
Leather-appointed front buckets	-	-	-	●
Driver and passenger-side, forward-facing, flat-folding rear seats. Includes under-seat storage. Extended Cab models only.	-	●	●	●
Rear folding split bench. Crew Cab models only. Includes under-seat storage.	-	●	●	●
Driver 4-way power seat adjuster with manual recline	●	●	●	●
Front-passenger 2-way manual, fore/aft with manual recline	●	●	●	-
Front-passenger 4-way power seat adjuster and power driver and passenger lumbar control. On SLE models, included and only available with All-Terrain Package.	-	-	○	●
Heated driver and front-passenger seats. On SLE models, included and only available with All-Terrain Package.	-	-	○	●

INTERIOR DETAILS

<b>CLIMATE CONTROL</b> Single-zone manual climate control	●	●	●	-
Single-zone automatic climate control. On SLE models, included and only available with SLE Convenience Package.	-	-	○	●
<b>CONSOLE</b> Overhead	-	-	●	●
Floor, includes front compartment	●	●	●	●
<b>FLOOR COVERING</b> Colour-keyed carpeting	-	●	●	●
Full-length vinyl	●	○	-	-
Colour-keyed carpeted first- and second-row floor mats	-	●	●	●
<b>HANDLES</b> Door release, Jet Black	●	●	-	-
Chrome	-	-	●	●
<b>MIRROR</b> Inside rearview with manual day/night feature	●	●	-	-
Inside rearview auto-dimming	-	-	●	●
<b>REMOTE KEYLESS ENTRY</b> On Canyon models, included and only available with Canyon Convenience Package	-	○	●	●
<b>REMOTE VEHICLE STARTER SYSTEM</b> On SLE models, included and only available with SLE Convenience Package	-	-	○	●
<b>TIRE PRESSURE MONITORING SYSTEM</b> Does not monitor spare tire	●	●	●	●
<b>WINDOWS</b> Power with driver express-up and -down	●	●	●	●
Rear sliding window. On SLE models, included and only available with SLE Convenience Package.	-	-	○	●

## TRIM LEVELS

SL  
CANYON  
SLE  
SLT

## OPTION PACKAGES

<b>CANYON CONVENIENCE PACKAGE</b> Includes Remote Keyless Entry, cruise control, rear-window defogger, theft-deterrent system and EZ-Lift and Lower Tailgate	-	○	-	-
<b>SLE CONVENIENCE PACKAGE</b> Includes single-zone automatic climate control, rear sliding window and remote vehicle starter system	-	-	○	-
<b>DRIVER ALERT PACKAGE</b> Includes Forward Collision Alert and Lane Departure Warning. On SLE models, requires SLE Convenience Package. Not available with All-Terrain Package.	-	-	○	○
<b>ALL-TERRAIN PACKAGE</b> Includes Off-Road Suspension Package, automatic locking rear differential, Hill Descent Control, 17" Dark Argent metallic cast-aluminum wheels, body-colour rear bumper, front recovery hooks, transfer case shield (4x4 only), Jet Black/Cobalt Red accents interior, heated front seats, 4-way power front-passenger-seat adjuster and power driver and front-passenger lumbar control. Requires SLE Convenience Package.	-	-	○	-
<b>NIGHTFALL EDITION</b> Includes black 5" rectangular assist steps, polished exhaust tip, body-colour grille, 18" Ultra-Bright machined wheels with Dark Argent paint, spray-in bedliner, Onyx Black exterior paint and SLE Convenience Package	-	-	○	-

## ENTERTAINMENT/COMMUNICATION/NAVIGATION

<b>107 MM DIAGONAL COLOUR DISPLAY</b> Includes AM/FM stereo with USB <sup>1</sup> port and auxiliary jack	●	●	-	-
<b>107 MM DIAGONAL COLOUR DISPLAY WITH INTELLILINK<sup>2</sup></b> Includes AM/FM stereo with USB <sup>1</sup> port, auxiliary jack, Bluetooth <sup>®</sup> streaming audio for music and most phones, hands-free smartphone integration, Stitcher SmartRadio <sup>®</sup> and voice-activated technology for radio and phone. Includes OnStar 4G LTE. <sup>4</sup>	-	○	-	-
<b>203 MM DIAGONAL COLOUR TOUCH-SCREEN WITH INTELLILINK<sup>2</sup></b> Includes AM/FM/SiriusXM <sup>5</sup> (with 3-month trial) with USB <sup>1</sup> port, auxiliary jack, text message alerts, Siri <sup>®</sup> Eyes Free functionality through voice command, Bluetooth <sup>1</sup> streaming audio for music and most phones, hands-free smartphone integration, Apple CarPlay, <sup>™</sup> Stitcher SmartRadio, <sup>3</sup> and voice-activated technology for radio and phone	-	-	●	●
<b>203 MM DIAGONAL COLOUR TOUCH-SCREEN NAVIGATION<sup>7</sup> WITH INTELLILINK<sup>2</sup></b> Includes AM/FM/SiriusXM <sup>5</sup> (with 3-month trial) with USB <sup>1</sup> port, auxiliary jack, text message alerts, Siri <sup>®</sup> Eyes Free functionality through voice command, Bluetooth <sup>1</sup> streaming audio for music and most phones, hands-free smartphone integration, Apple CarPlay, <sup>™</sup> Stitcher SmartRadio, <sup>3</sup> and voice-activated technology for radio and phone	-	-	○	○
6-speaker system	●	●	●	●
Bose <sup>®</sup> premium 7-speaker system	-	-	○	○
Audio system USB <sup>1</sup> port located inside centre console	-	-	●	●
<b>USB<sup>1</sup> CHARGING PORTS 2</b> located on rear of centre console	-	-	●	●
<b>ONSTAR 4G LTE<sup>4</sup></b> 5-year Basic Plan <sup>6</sup> and 6 months of Guidance Plan. On Canyon models, included and only available with 107 mm diagonal colour display with IntelliLink. <sup>2</sup>	-	○	●	●
<b>ONSTAR 4G LTE<sup>4</sup></b> Wi-Fi <sup>®</sup> hotspot capability (with 3-month/3 GB trial, whichever comes first). On Canyon models, included and only available with 107 mm diagonal colour display with IntelliLink. <sup>2</sup>	-	○	●	●
<b>SIRIUSXM SATELLITE RADIO<sup>5</sup></b> 3 trial months included	-	-	●	●

KEY ● STANDARD ○ AVAILABLE - NOT AVAILABLE

<sup>1</sup>Not compatible with all devices. <sup>2</sup>Full functionality requires compatible Bluetooth and smartphone, and USB connectivity for some devices. Visit [intellilink.gmc.gm.ca](http://intellilink.gmc.gm.ca) for more details. <sup>3</sup>Data plan rates apply. <sup>4</sup>Visit [onstar.ca](http://onstar.ca) for coverage maps, details and system limitations. Services vary by model, conditions and geographical and technical restrictions. OnStar with 4G LTE connectivity is available on select vehicle models and in select markets. Available Wi-Fi hotspot requires a data plan. Customers will be able to access OnStar services only if they accept the OnStar User Terms, Privacy Statement and Software Terms. OnStar acts as a link to existing emergency service providers. Not all vehicles may transmit all crash data. After the trial period (if applicable), an active OnStar service plan is required. <sup>5</sup>Available in 10 Canadian provinces and the 48 contiguous United States. Subscription sold separately after trial period. If you decide to continue your service at the end of your trial subscription, the plan you choose will automatically renew and bill at then-current rates until you call 1-877-209-0079 to cancel. Other fees and taxes will apply. All fees and programming subject to change. See SiriusXM "Terms and Conditions" and complete details at [siriusxm.ca](http://siriusxm.ca). <sup>6</sup>Vehicle user interface is a product of Apple,<sup>®</sup> and Apple's<sup>®</sup> terms and privacy statements apply. Requires compatible smartphone. Data plan rates apply. <sup>7</sup>At time of printing, detailed map coverage is available for most major urban areas of the United States and for certain metropolitan areas of Canada (Vancouver, Calgary, Edmonton, Winnipeg, Windsor, London, Toronto, Ottawa, Montreal, Quebec City and Halifax). Coverage is significantly limited outside these areas. <sup>8</sup>The OnStar Basic Plan is available for 5 years from the date of delivery of the eligible new 2016 model year and newer vehicles and is transferable to subsequent owners for the remaining term. The Basic Plan includes access to: [1] monthly OnStar Vehicle Diagnostics e-mails (capabilities vary by model); [2] Dealer Maintenance Notification; and [3] limited OnStar RemoteLink mobile app services, which include remote start (requires factory-installed and -enabled remote start system), remote lock/unlock doors (requires automatic locks) and remote horn and lights activation. The OnStar RemoteLink mobile app is available on select Apple,<sup>®</sup> Android,<sup>™</sup> BlackBerry<sup>®</sup> and Windows<sup>®</sup> devices. Visit [onstar.ca](http://onstar.ca) for vehicle availability, coverage map, details and system limitations. The OnStar Basic Plan does not include any Emergency Services, Automatic Crash Response, Stolen Vehicle Assistance, live Advisor service or Hands-Free Calling. These and other services are available under a paid plan. If you sell your vehicle or wish to cancel use of Basic Plan services, you must contact OnStar at 1-888-4-ONSTAR [1-888-466-7827]. <sup>9</sup>Always use safety belts and the correct restraint for your child's age and size. Even in vehicles equipped with the Passenger Sensing System, children are safer when properly secured in a rear seat in the appropriate infant, child or booster seat. Never place a rear-facing infant restraint in the front seat of any vehicle equipped with a passenger airbag. See the vehicle Owner's Manual and child safety seat instructions for more safety information.

## TRIM LEVELS

SL  
CANYON  
SLE  
SLT

## EXTERIOR STYLING AND FUNCTIONALITY

<b>BUMPER</b> Rear chrome with integrated corner steps	●	●	●	●
Rear body-colour with integrated corner steps. Included and only available with All-Terrain Package.	-	-	○	-
<b>DOOR HANDLES</b> Black	●	●	-	-
Body-colour	-	-	●	-
Chrome	-	-	-	●
<b>FOG LAMPS</b> Front	-	-	●	●
<b>HEADLAMPS</b> Projector-type with signature LED lighting	●	●	●	●
<b>LIGHTING</b> Overhead cargo box	●	●	●	●
<b>OUTSIDE MIRRORS</b> Manual-folding, black	●	●	-	-
Power-adjustable, body-colour, manual-folding with driver-side spotter mirror	-	-	●	-
Heated power-adjustable, chrome, manual-folding with driver-side spotter mirror	-	-	-	●
<b>MOULDINGS</b> Black beltline	●	●	-	-
Chrome beltline	-	-	-	●
<b>RECOVERY HOOKS</b> Front. Standard on 4x4 models only. On 4x2 SLE models, included and only available with All-Terrain Package.	-	●	●	●
<b>SPRAY-IN BEDLINER</b> Includes GMC logo	-	○	○	○
<b>TAILGATE</b> EZ-Lift and Lower Tailgate. On Canyon models, included and only available with Canyon Convenience Package.	-	○	●	●
Locking feature	●	●	●	●

## SAFETY AND SECURITY

<b>AIRBAGS<sup>9</sup></b> Dual-stage frontal and seat-mounted side-impact for driver and front passenger, head-curtain for front and rear outboard seating positions and front Passenger Sensing System	●	●	●	●
<b>FORWARD COLLISION ALERT AND LANE DEPARTURE WARNING</b> Included and only available with Driver Alert Package	-	-	○	○
<b>DAYTIME RUNNING LAMPS</b> With automatic lamp control	●	●	●	●
<b>REAR VISION CAMERA</b> With dynamic grid lines	●	●	●	●
<b>THEFT-DETERRENT SYSTEM</b> Immobilization	●	●	●	●
<b>THEFT-DETERRENT SYSTEM</b> Unauthorized entry. On Canyon models, included and only available with Canyon Convenience Package.	-	○	●	●

## IMPORTANT WORDS |

### PEACE OF MIND, STANDARD WITH EVERY GMC MODEL

When you build them with quality, you can back them with confidence. That's why General Motors of Canada backs every GMC model with the best coverage in Canada. Program highlights include:

- 2-year/48,000 km Lube-Oil-Filter Maintenance<sup>1</sup>
- 3-year/60,000 km New-Vehicle Limited Warranty<sup>2</sup>
- 5-year/160,000 km Powertrain Limited Warranty, with \$0 deductible on repairs and the warranty is fully transferable at no charge<sup>2</sup>
- 5-year/160,000 km Courtesy Transportation<sup>2</sup>
- 5-year/160,000 km 24/7 Roadside Assistance<sup>2</sup>
- 6-year/160,000 km rust-through perforation coverage<sup>2</sup>
- 8-year/130,000 km coverage on catalytic converters and Powertrain Control Modules (PCMs)<sup>2</sup>

### OTHER OWNERSHIP PRIVILEGES AND PROGRAMS:<sup>3</sup>

- **GM Protection Plan (GMPP)** –The only extended service plan backed by the resources and commitment of General Motors, GMPP may be purchased at the time of sale or subsequently during the New-Vehicle Limited Warranty period.
- **Certified Service** –With GM-certified technicians and GM-approved parts, nobody knows your GM vehicle better.
- **GMC Owner Centre** –As an owner, take advantage of the GMC Owner Centre. This online owner's destination gives you access to coupons, contests, current offers and the latest driving and maintenance tips. Find out more at [gmcowner.ca](http://gmcowner.ca).

### TO HELP YOU PURCHASE OR LEASE A NEW VEHICLE:

- **Purchase Financing and Leasing** –On-the-spot financing, see dealer for full details.<sup>4</sup>
- **GM Student Bonus Program** –Students or recent graduates of high school, college or university<sup>3</sup> may be eligible to receive a Student Bonus vehicle redemption allowance of \$500 or \$750<sup>5</sup> (tax inclusive) [purchased vehicle dependant] to use toward the purchase, lease or finance of one eligible new GMC vehicle.
- **GM Card** –Cardholders may redeem Earnings toward the total purchase price or lease down payment of an eligible new GMC truck, SUV or crossover. Restrictions and limitations apply.<sup>5</sup> For full program details, visit [gmc card.ca](http://gmc card.ca).

### INFORMATION RESOURCES:

You can find more information about these programs from your GMC dealer, or at these information centres:

- The GM website at [gm.ca](http://gm.ca)
- The GM Customer Care Centre at **1-800-GM-DRIVE (1-800-463-7483 or 1-800-263-3830** for TDD users)

### A WORD ABOUT THIS BROCHURE

Some of the equipment shown or described throughout this brochure may be available at extra cost. We have tried to make this brochure comprehensive and factual. We reserve the right, however, to make changes at any time, without notice, in prices, colours, materials, equipment, specifications, models and availability. Specifications, dimensions, measurements, ratings and other numbers in this brochure and other printed materials provided at the dealership or affixed to vehicles are approximates based upon design and engineering drawings and prototypes and laboratory tests. Your vehicle may differ due to variations in manufacture and equipment. Since some information may have been adapted since the time of printing, please check with your GMC dealer for complete details. General Motors of Canada Limited reserves the right to lengthen or shorten the model year for any product, for any reason, or to start and end model years at different times.

### A WORD ABOUT ASSEMBLY

GMC vehicles are equipped with engines and components produced and assembled by different operating units of General Motors, its subsidiaries and suppliers to GM worldwide. We sometimes find it necessary to produce GMC vehicles with different or differently sourced components than originally scheduled. Since some options may be unavailable when your vehicle is assembled, we suggest that you verify that your vehicle includes the equipment you ordered or, if there are changes, that they are acceptable to you.

### TRADEMARKS

©2015 General Motors of Canada Limited. All rights reserved. The marks appearing in this brochure, including but not limited to: General Motors, GM, GMC, Canyon and their respective logos, emblems, slogans and vehicle model names and body designs; and other marks such as StabiliTrak are trademarks of General Motors and/or General Motors of Canada Limited, its subsidiaries, affiliates or licensors. OnStar and the OnStar emblem are registered trademarks of OnStar, LLC. The SiriusXM name and related logos are trademarks of SiriusXM Canada, Canadian Satellite Radio, Inc. Bluetooth is a registered trademark of Bluetooth SIG, Inc. Bose is a registered trademark of the Bose Corporation. Apple, Siri, iPhone and Apple CarPlay are registered trademarks of Apple, Inc. Android is a trademark of Google, Inc. BlackBerry is a registered trademark of BlackBerry Limited. Windows is a registered trademark of Microsoft Corporation.

<sup>1</sup>The 2-Year Scheduled LDF Maintenance Program provides eligible customers in Canada who have purchased, leased or financed a new eligible 2016 MY Chevrolet, Buick or GMC vehicle [excluding Spark EV] with an ACDelco oil and filter change, in accordance with the Oil Life Monitoring System and the Owner's Manual, for 2 years or 48,000 km, whichever occurs first, with a limit of four lube-oil-filter services in total, performed at participating GM dealers. Fluid top-offs, inspections, tire rotations, wheel alignments and balancing, etc., are not covered. This offer may not be redeemed for cash and may not be combined with certain other consumer incentives available on GM vehicles. General Motors of Canada Limited reserves the right to amend or terminate this offer, in whole or in part, at any time without prior notice. Additional conditions and limitations apply. See dealer for details. <sup>2</sup>Whichever comes first. Conditions and limitations apply, see dealer for details. <sup>3</sup>Conditions and limitations apply. <sup>4</sup>Subject to eligibility. <sup>5</sup>Program subject to change.

**GMC**

WE ARE PROFESSIONAL GRADE