

LEXUS



2015

GS



MAKE AN OVERSTATEMENT.

The 2015 Lexus GS is a luxury Grand Touring Sedan with laser focus on adrenaline-charged performance. Choose from rear or all-wheel drive, gasoline or the powerful Lexus Hybrid Drive,²⁴ and multiple options packages including *F SPORT*. With over a million miles of development, it's as precise in looks as it is in performance. Be prepared to be overwhelmed.

IT DOESN'T GET PARKED.
IT GETS DISPLAYED.

A progressive synthesis of emotive style and engineering functionality, the GS delights the senses with aesthetically sculpted lines and a low centre of gravity. It confidently projects an elegance and power that can't be ignored.



YOU DON'T SEAT YOURSELF SO
MUCH AS YOU IMMERSE YOURSELF.

Intuitively designed and laid out, the interior of the GS delights the senses while keeping controls and monitoring functions within reach and view. From the telescopic steering wheel with increased length and lowered angle to the heated and ventilated front seats with 10 power adjustments (18-way available with certain options packages), your ride is that much more comfortable in the GS. Seat positions can be programmed with the smart key so when the driver changes, the seat recalls its settings as soon as the door is opened.



PASSES TRAFFIC. AND EXPECTATIONS.

Grab the wheel of the GS and take control of one of the most advanced powertrains in its class. And with a 306 horsepower²¹ V6 engine propelling you from 0-100 km/h in just 5.7 seconds, you'll never want to let go.



PADDLE SHIFTERS Steering wheel mounted paddle shifters offer fingertip control over its highly advanced 6-speed sequential shift automatic transmission. Get faster shifts, earlier torque converter lockup, and downshift throttle blips for a heightened driving experience.



DRIVING MODES Customize your drive by choosing from up to four driving modes: Eco, Normal, Sport and Snow, and available on *F SPORT* packages, Sport S and S+. Each brings different handling capabilities to the road you've chosen.



COMMANDS THE ROAD. AND ATTENTION.

The *F SPORT* package adds style and substance to the *GS*, from the mesh spindle grille to the 19-inch forged aluminum wheels. Feel the road like never before thanks to the *F SPORT* Sport S and Sport S+ modes, Electric Power Steering (EPS) and Adaptive Variable Suspension (AVS).





INTERIOR Track-inspired pedals are complemented with aluminum doorsills and an LFA-inspired *F SPORT* steering wheel and shift knob – both trimmed in perforated leather. Plus experience unbelievable sound from the 17-speaker Mark Levinson® Surround Sound System with Green Edge® speaker technology.⁸



GS 450h

The GS 450h has the world's first direct-injection Atkinson cycle hybrid system. With its second generation Lexus Hybrid Drive,²⁴ the GS 450h gives the power of a V8 with fuel economy rivalling a V6. Its 338 total system net horsepower²¹ are satisfyingly quick from standstill: just 5.6 seconds to accelerate from 0-100 km/hr. Its EV mode can extend its electric-only driving range for those times you prefer efficiency over enthrallment. Its chassis and double wishbone suspension, more rigid body architecture, and multi-link rear suspension combine to produce crisp, confident, and tactile handling.

**LEXUS
HYBRID
DRIVE**

GS 350

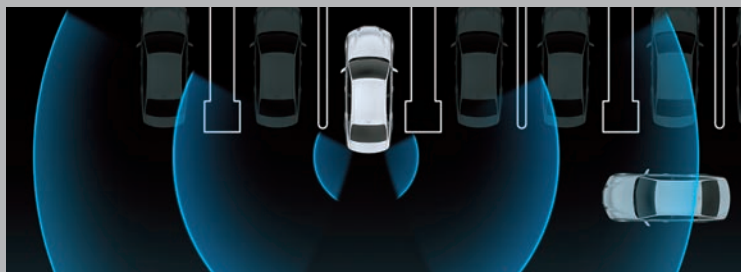
The GS 350 flaunts a 3.5-litre,²⁰ 306 horsepower²¹ V6 engine under its sculpted hood and can power you from 0-100 km/hr in a stingy 5.7 seconds. It delivers optimal performance and maximum fuel efficiency while minimizing emissions, thanks to the combination of direct and port injection.

REASSURINGLY OVERLY PROTECTIVE.

The 2015 GS keeps you safe and keeps you informed with some of the most advanced safety and technology features on the road. Available Bi-Xenon auto-levelling HID headlamps swivel into corners. The available Head-up Display projects key vehicle and navigation information onto the windshield for easy viewing. And as you approach the GS, intelligent lighting illuminates the vehicle and its immediate surroundings, even spotlighting the shift lever.



LARGE DISPLAY A brilliant 12.3-inch, high-resolution multimedia split-screen displays maps, audio, climate controls, and more.



ENHANCED VISION Available Rear Cross-Traffic Alert¹⁶ uses quasi-millimetre wave radar to help detect and warn of unseen vehicles when backing up.



ADVANCED SAFETY Available Blind Spot Monitor¹⁵ features in-mirror alerts of vehicles in blind spots.

STANDARD LUXURY

LUXURY AND CONVENIENCE:

- SmartAccess with push-button Start/Stop¹
- Multi-function, in-key remote entry system with rolling-code technology
- Dual-zone automatic climate control; S-Flow energy-saving airflow control
- Power moonroof
- HomeLink® universal transceiver²
- Auto-dimming outside rearview mirrors
- Lexus Personalized Settings (LPS) to customize select electronic functions
- Backup camera³

SEATING AND TRIM:

- Perforated leather seat surfaces
- Heated and ventilated front seats
- High-gloss linear espresso wood interior trim
- Heated leather-wrapped steering wheel
- Leather-wrapped shift knob
- Power tilt-and-telescopic steering wheel with automatic tilt-away
- Driver Seat Memory System
- 18-way power-adjustable front seats (including lumbar), side bolsters, thigh support, articulating backrest, butterfly headrests (GS 450h)
- Heated rear outboard seats (GS 450h)
- Rear door manual sunshades (GS 450h)
- Power-folding exterior rearview mirrors (GS 450h)

AUDIO, COMMUNICATIONS AND INSTRUMENTATION:

- Voice-activated Navigation System with Remote Touch⁴
- 12.3-inch high-resolution split-screen multimedia display
- 12-speaker Lexus premium sound system
- Remote Touch controller
- Integrated XM® Satellite Radio⁵
- USB and auxiliary minijack audio input for iPod/iPhone® and music player integration with audio system⁷
- Bluetooth® audio profile for wireless integration of compatible music players and automatic phonebook synchronization⁶
- Electroluminescent instrumentation
- Analog clock with LED illumination
- Steering wheel-mounted audio, phone and display controls
- Drive Mode Select with Normal, ECO and Sport modes
- 17-speaker Mark Levinson® Surround Sound System with Green Edge® speaker technology (GS 450h)⁸

STANDARD SAFETY AND SECURITY

ACTIVE SAFETY:

- Vehicle Dynamics Integrated Management (VDIM)⁹
- Vehicle Stability Control (VSC)⁹
- Electronic Brake-force Distribution (EBD)
- Smart Stop Technology¹⁰
- Direct Tire Pressure Monitor System¹¹
- Electronic parking brake with auto and hold functions
- Power-adjustable outside mirrors with defoggers, puddle lamps, integrated turn indicators and auto tilt-down in reverse
- Bi-Xenon HID headlamps with dynamic auto-levelling
- LED daytime running lamps
- LED brake lamps
- Headlamp washers
- Head-up Display (GS 450h)
- Pre-Collision System (GS 450h)¹²
- Dynamic Radar Cruise Control (GS 450h)¹³
- Driver Attention Monitor (GS 450h)¹⁴
- Blind Spot Monitor (GS 450h)¹⁵
- Rear Cross-Traffic Alert (GS 450h)¹⁶
- LED headlamps (GS 450h)
- LED fog lamps (GS 450h)

PASSIVE SAFETY:

- Driver and front-passenger airbag system (SRS)¹⁷
- Front seat-mounted side airbags¹⁷
- Rear outboard seat-mounted side airbags¹⁷
- Front and rear side curtain airbags¹⁷
- Driver and front-passenger knee airbags¹⁷
- Active front headrests¹⁸
- Whiplash Injury Lessening (WIL) front seats¹⁹
- Child Restraint System (CRS) tether anchor brackets for middle-row outboard seats

SECURITY:

- Vehicle theft-deterrent system
- Engine immobilizer system
- First aid kit
- Tool kit

LEXUS GENUINE ACCESSORIES:

- Block heater
- Paint protection film
- Bodyside moulding
- Rear lip spoiler

STANDARD SPECIFICATIONS

CURB WEIGHT

GS 350 AWD	1,765 kg/3,970 lb
GS 450h	2,320 kg/5,125 lb

ENGINE TYPE

GS 350 V6, 3.5 litres²⁰ Direct and port fuel injection, Dual Variable Valve Timing with intelligence (VVT-i)

GS 450h V6, 3.5 litres, Atkinson cycle²⁰ Direct and port fuel injection, Lexus Hybrid Drive,²⁴ Dual Variable Valve Timing with intelligence (VVT-i)

HORSEPOWER

GS 350 AWD	306 hp @ 6,400 rpm ²⁰
GS 450h	338 hp (total system net horsepower) ^{20,21}

TORQUE @ RPM

GS 350	277 lb-ft @ 4,800 rpm ²⁰
--------	-------------------------------------

FUEL TANK CAPACITY

66 litres/14.5 gallons

FUEL ECONOMY ESTIMATES

(City/Hwy/Combined)

GS 350	12.6/9.1/11.0 L/100 km ²² (22/31/26 mpg) ²²
GS 450h	8.0/6.9/7.5 L/100 km ²² (35/41/38 mpg) ²²

AERODYNAMIC DRAG COEFFICIENT

0.27

DRIVETRAIN

DRIVE WHEELS

- > All-wheel drive (AWD)
- > Vehicle Dynamics Integrated Management (VDIM)⁹
- > Vehicle Stability Control (VSC)⁹
- > Traction Control (TRAC)⁹
- > Drive Mode Select

TRANSMISSION

- GS 350 AWD > 6-Speed sequential automatic with paddle shifters
- GS 450h > Electronically controlled Continuously Variable Transmission (ECVT) with paddle shifters

CHASSIS

FRONT SUSPENSION

- > Independent, double-wishbone with coil springs, gas-pressurized shock absorbers and stabilizer bar

REAR SUSPENSION

- > Independent, multi-link with coil springs, gas-pressurized shock absorbers and stabilizer bar
- > Adaptive Variable Suspension (AVS) (GS 350 optional, GS 450h)
- > Available *F SPORT*-tuned Adaptive Variable Suspension (AVS) (GS 350 *F SPORT*)

STEERING

Electric Power Steering (EPS)

BRAKES

- > Four-wheel power-assisted disc brakes
- > Four-sensor, four-channel Anti-lock Brake System (ABS)
- > Electronic Brake-force Distribution (EBD)
- > Brake Assist (BA)²³
- > Regenerative braking system (GS 450h)

TIRES

- > P235/45R18 all-season tires (Standard)
- > P235/40R19 all-season tires (GS 350 AWD *F SPORT*)

BODY AND DIMENSIONS

HEIGHT

1,455 mm (57.3 in)

WIDTH

1,840 mm (72.4 in)

WHEELBASE

2,850 mm (112.2 in)

OVERALL LENGTH

4,845 mm (190.7 in)

HEADROOM (FRONT)

965 mm (38 in)

HEADROOM (REAR)

960 mm (37.6 in)

LEGROOM (FRONT)

1,080 mm (42.5 in)

LEGROOM (REAR)

935 mm (36.8 in)

SHOULDER ROOM (FRONT)

1,455 mm (57.3 in)

SHOULDER ROOM (REAR)

1,415 mm (55.7 in)

TRUNK CAPACITY

(max)

GS 350 AWD	400 litres (14.1 cubic feet)
GS 450h	400 litres (14.1 cubic feet)

WHEELS



Standard
18-inch split 5-spoke alloy wheels



Optional
18-inch split 9-spoke alloy wheels
with liquid graphite finish



F SPORT
19-inch split 10-spoke alloy wheels

EXTERIOR



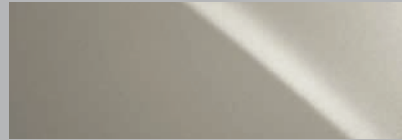
STARFIRE PEARL.....0077



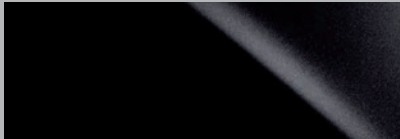
ULTRA WHITE.....0083



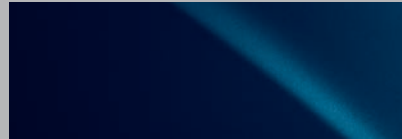
NEBULA GREY PEARL.....01H9



ATOMIC SILVER.....01J7



OBSIDIAN.....02I2



DEEP SEA MICA.....08V3



CRIMSON RED.....03S8



FIRE AGATE PEARL.....04V3

INTERIOR



LEATHER - PERFORATED
PREMIUM LEATHER - PERFORATED
(AVAILABLE) | FLAXEN



LEATHER - PERFORATED
PREMIUM LEATHER - PERFORATED
(AVAILABLE) | BLACK



LEATHER - PERFORATED
PREMIUM LEATHER - PERFORATED
(AVAILABLE) | CABERNET

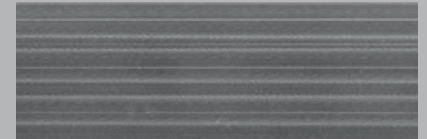
INTERIOR TRIM



ESPRESSO



LINEAR ESPRESSO WOOD TRIM



STRIATED ALUMINUM TRIM

2015 GS

LUXURY PACKAGE
 EXECUTIVE PACKAGE
 F SPORT SERIES 1
 F SPORT SERIES 2



LUXURY PACKAGE	GS 350 AWD	EXECUTIVE PACKAGE Luxury Package PLUS:	GS 350 AWD	F SPORT F SPORT SERIES 1	GS 350 AWD	F SPORT F SPORT SERIES 2 F SPORT Series 1 PLUS:	GS 350 AWD
18-inch split 9-spoke alloy wheels with liquid graphite finish	•	17-speaker Mark Levinson® Surround Sound System with Green Edge® speaker technology ⁸	•	F SPORT 19-inch split 10-spoke alloy wheels with all-season tires	•	Pre-Collision System ¹²	•
Adaptive Variable Suspension (AVS)	•	Head-up Display	•	F SPORT tuned Adaptive Variable Suspension (AVS)	•	Driver Monitoring System ¹⁴	•
Drive Mode Select with Sport S+	•	Pre-Collision System ¹²	•	F SPORT tuned Electric Power Steering (EPS)	•	Dynamic Radar Cruise Control ¹³	•
Direct Tire Pressure Monitor System ¹¹	•	Power-folding exterior rearview mirrors	•	Drive Mode Select with Sport S+ Mode	•	Head-up Display	•
Adaptive Front Lighting System (AFS)	•	Driver Attention Monitor ¹⁴	•	F SPORT front bumper, upper and lower grille inserts, rear valence, rear lip spoiler	•		
LED fog lamps	•			F SPORT front driver seat with 16-way power-adjustable side bolsters, thigh support, four-way lumbar	•		
Perforated premium leather seat surfaces	•			10-way power-adjustable F SPORT front passenger seat	•		
18-way power-adjustable front seats (including lumbar), side bolsters, thigh support, articulating backrest, butterfly headrests	•			F SPORT leather-wrapped steering wheel	•		
Lexus Memory System for front-passenger seat	•			F SPORT leather-wrapped shift knob	•		
Wood and leather-trimmed steering wheel	•			F SPORT aluminum sport pedals	•		
3-zone automatic climate control	•			F SPORT aluminum interior trim	•		
Heated rear outboard seats	•			F SPORT doorsill trim	•		
Rear door manual sunshades	•			Black headliner	•		
Power trunk open/close	•			Power trunk open/close	•		
Blind Spot Monitor with Rear Cross-Traffic Alert ¹⁶	•			Blind Spot Monitor ¹⁵	•		
				Rear Cross-Traffic Alert ¹⁶	•		



SERVICE COMMITMENT

On top of enjoying the highest quality product, Lexus also delivers through a professional Dealer network, a unique and uncompromising level of after-sales service. First Class Service Concept. The highest level of professionalism and vehicle support ensure that Lexus ownership experience is as luxurious as the vehicles.

WARRANTY

Our Lexus Warranty Comprehensive Coverage includes:

48 months/80,000 km

Hybrid-Related Components

96 months/160,000 km (applies to battery control module, hybrid vehicle control module, hybrid battery and the inverter/converter)

Powertrain

72 months/110,000 km

Corrosion Perforation

72 months/unlimited kilometres

Major Emission Control Components

96 months/130,000 km

Please see your Lexus Dealer for details. Lexus will even provide five days of alternate transportation if your vehicle is required to stay at the dealership for an extended period of time due to a warrantable condition.

EXTRA CARE PROTECTION

Extend beyond the new vehicle warranty and enhance your peace of mind with Lexus Extra Care Protection.

ROADSIDE ASSISTANCE

As a proud owner of a Lexus vehicle you won't have to worry about obtaining assistance when mishaps requiring Emergency Roadside Service or Mechanical Breakdown Towing are needed. Throughout Canada and the continental U.S., our Central Emergency Roadside Services Operator will always be there to ensure you receive prompt, efficient services from one of the many facilities qualified under our approved Roadside Assistance Program. Twenty-four hours a day, 365 days a year we will be there to help.

LEXUS FINANCIAL SERVICES

Come talk to the experts whose exclusive business is financing and leasing Lexus vehicles. You'll find our interest rates fully competitive and our terms flexible - up to 72 months. Our online services conveniently allow you to confirm current rates and receive your credit approval in advance of selecting the Lexus that's right for you. For help, visit your Lexus Dealer or lexus.ca, or call 1-800-26-LEXUS.

LEXUS CANADA

Every effort has been made to ensure the specifications and equipment shown are accurate based on information available at time of printing. In some cases, certain changes in standard equipment, options or product delays may occur, which would not be reflected in this brochure. Lexus Canada reserves the right to make these changes without notice or obligation. Some of the photography in this brochure features U.S. or overseas models, shown with optional equipment that may not be available in Canada. Your Lexus Dealer is the best source for up-to-date information.

lexus.ca 1-800-26-LEXUS

To sign up for information on Lexus, go to experience.lexus.ca

Lexus, One Toyota Place,
Toronto, Ontario M1H 1H9



Vehicles in this brochure shown with optional equipment. Some features mentioned and/or shown in this brochure may only be available as part of an optional package. Under very cold conditions, the operation of some vehicle electronic systems using liquid crystal technology (such as CD, DVD, NAV and Audio displays) may be adversely affected until a warmer interior vehicle temperature is reached. Lexus reminds you to place small children in CSA-approved car seats - in the rear seats, to always wear your seatbelts, and to drive safely. **1.** The SmartAccess system may interfere with some pacemakers or cardiac defibrillators. If you have one of these medical devices, please talk to your doctor to see if you should deactivate this system. **2.** HomeLink is a registered trademark of Johnson Controls. **3.** The backup camera does not provide a comprehensive view of the rear area of the vehicle. You should also look around outside your vehicle and use your mirrors to confirm rearward clearance. **4.** The Navigation System is designed to assist in locating an address or point of interest. Discrepancies may be encountered between the system and your actual location. Road system changes may affect the accuracy of the information provided. Rely on your common sense to decide whether to follow a specified route. Detailed coverage not available for every city or roadway. Periodic updates available at an additional cost. See your Navigation System Owner's Manual for further details. Navigational systems in some vehicles are available with bilingual capability. **5.** Functioning Satellite Radio requires a monthly service fee. Please see your Lexus Dealer for further details. Reception of satellite signal may vary depending on location. **6.** iPod/iPhone® is a registered trademark of Apple Inc. **7.** Lexus tests certain Bluetooth® capable phones for compatibility with Lexus vehicles. Please see your Lexus Dealer for details. Note that the recommendation of Lexus is not a warranty of the performance of any phone and that some problems may occur with any type of handset based on the phone software version or the service coverage available in your area. **8.** Mark Levinson is a registered trademark of Harman International Industries Inc. **9.** Vehicle Stability Control (VSC) and if applicable Vehicle Dynamics Integrated Management (VDIM) are electronic systems designed to help the driver maintain vehicle control under adverse conditions. They are not substitutes for safe driving practices. Factors including speed, road conditions and driver steering input can all affect whether VSC and VDIM will be effective in preventing a loss of control. Please see your Owner's Manual for further details. **10.** Smart Stop Technology operates only in the event of certain simultaneous brake and gas pedal applications. When engaged, the system will reduce engine power to help the brakes to bring the vehicle to a stop. Factors including speed, road conditions, driver input can all impact stopping distance. Smart Stop Technology is not a substitute for safe and attentive driving and does not guarantee instant stopping. Please see your Owner's Manual for further details. **11.** The Lexus Tire Pressure Monitor System alerts the driver when tire pressure is critically low. For optimal tire wear and performance, tire pressure should be checked regularly with a gauge. Do not rely solely on the monitor system. Please see your Owner's Manual for details. **12.** The Pre-Collision System is designed to help reduce the crash speed and damage in certain frontal collisions only. It is not a collision avoidance system and is not a substitute for safe and attentive driving. System effectiveness depends on many factors, such as speed, driver input and road conditions. Please see your Owner's Manual for further information. **13.** Dynamic/Radar Cruise Control was designed to assist the driver and is not a substitute for safe and attentive driving practices. Please see your Owner's Manual for important cautions and instructions. **14.** The Driver Attention Monitor is designed to alert the driver if a potential hazard is detected ahead and the driver's face appears to be turned away. It is not a collision-avoidance system and is not a substitute for safe and attentive driving. System effectiveness depends on many factors. Please see your Owner's Manual for further information. **15.** Do not rely exclusively on the Blind Spot Monitor System to determine if a lane change is safe. Always look over your shoulder and use your turn signal before changing lanes. There are severe limits to the function, detection range and clarity of the monitor system. For a complete list of limitations and directions regarding use of the monitor system, please see your Owner's Manual. **16.** Do not rely exclusively on the Rear Cross-Traffic Alert System. There are limitations to the function, detection and range of the system. You should also look around outside your vehicle, over your shoulder and use your mirrors to confirm rearward clearance. For a complete list of limitations and directions, please see your Owner's Manual. **17.** All the airbag ("AB") systems are Supplemental Restraint Systems. All ABs (if installed) are designed to inflate only under certain conditions and in certain types of severe collisions: frontal and knee ABs typically inflate in frontal collisions; side and side curtain ABs in side collisions; Roll-Sensing Curtain ABs at a severe tilt degree, roll or lateral G-force. In all other accidents, the ABs will not inflate. To decrease the risk of injury from an inflating AB, always wear seatbelts. Do not use a rearward-facing child seat in any front passenger seat. Please see your Owner's Manual for further information/warnings. **18.** Active headrests can help reduce the extent of whiplash in certain types of rear-end collisions. **19.** Whiplash Injury Lessening (WIL) front seats can help reduce the extent of whiplash in certain types of rear end collisions. **20.** Ratings achieved using the required premium unleaded gasoline with an octane rating of 91 or higher. **21.** Maximum output indicates engine plus HV battery output. **22.** Fuel efficiency estimates were determined using approved Government of Canada Test Methods. Actual fuel consumption will vary based on driving habits and other factors. **23.** Brake Assist is designed to help the driver take full advantage of the benefits of ABS. It is not a substitute for safe driving practices. Braking effectiveness also depends on proper brake-system maintenance and tire and road conditions. **24.** The Lexus Hybrids have nearly 70% fewer smog-forming emissions compared against similarly equipped conventional gasoline power vehicles. Based on North American sales data and Federal Tier 2 engine emission requirements.

LEXUS



COTCI-15GSE-20 (4.1M)