

LEXUS



2015

LS

AN EXPRESSION OF OUR HIGHEST STANDARDS.

The LS is the pinnacle of Lexus engineering, innovation, technology and design. With an incomparable list of standard and available features, it sets the bar for distinctive style and luxury. Noise reducing alloy wheels and sound-proofing laminated window glass ensure a hushed ride while power rear sunshades and power closing doors and trunk add a touch of automated class. Self-healing exterior paint keeps the LS beautiful while Climate Concierge individually monitors and adjusts four climate zones and the temperature of the steering wheel. Rear seating even offers an available ottoman leg rest and shiatsu massage.



GET READY FOR DOUBLE
TAKES, TRIPLE TAKES,
AND THE OCCASIONAL
QUADRUPLE.

Clean, luxurious lines give the LS a graceful and commanding presence, buoyed by gorgeous exclusive exterior elements. The unmistakable spindle grille greets the eye in front while the body package accentuating the low centre of gravity hints at the driving excitement to come.



SIT IN THE LAP OF LUXURIES.

The interior of the LS offers luxury beyond measure enveloped by a hushed quietness assured by strategic placement of insulating materials and an extremely rigid body that all but eliminates wind, road, and engine noise. L-Finesse design cues are beautifully lit by thoughtful LED lighting throughout the vehicle.



WIDESCREEN DISPLAY The 12.3-inch, high-resolution split-screen is standard, grandly displaying backup camera views, trip and multimedia, plus a host of conveniences, from navigation to Bluetooth® connection and even available Lexus Night View²⁷ – all encapsulated in a voice-operated command centre.

19-SPEAKER AUDIO The Mark Levinson^{®4} 19-speaker, 450-watt Surround Sound Audio System delivers peerless concert hall quality, the result of over 2,000 hours of design tuning by audio engineers.

FULL-SIZED LUXURY SEDAN. RACETRACK-SIZED PERFORMANCE.

The 386 potent horsepower are delivered by a 32-valve V8 engine and 8-speed transmission, resulting in seat-compressing acceleration and seamless shifting. The engine boasts combined Port and Direct Injection, Electronic Throttle Control with intelligence (ETC-i), and Variable Valve Timing with intelligence Electronically Driven (VVT-iE) on the intake cam – all of which contribute to the commanding output and undeniable efficiency of the LS.



ENHANCED DRIVE MODES There are five drive modes available with the Enhanced Drive Mode Select System: Normal, Eco, Sport, Sport+, and Comfort Mode. On the LS Hybrid, the EV Mode allows it to travel exclusively on electric power at 25 km/hr for up to 1.5 kilometres.



F SPORT

The performance of *F SPORT* is combined with the amenities of a full-size luxury sedan to deliver a truly exceptional driving experience.





EXTERIOR 19-inch forged aluminum wheels, are just the beginning of the *F SPORT* experience. The sculpted *F SPORT* front bumper, upper and lower grille inserts, rear diffuser, and doorsill trim give the LS a commanding presence on the road.

PERFORMANCE The LS *F SPORT* delivers and then some, with road-dominating features like tuned, lowered Adaptive Variable Suspension (AVS) and tuned Electric Power Steering (EPS).



INTERIOR The upgrades are plentiful, from the black leather-trimmed interior with white perforations to the bolstered front seats with embossed headrests, the LS *F SPORT* interior is an oasis of design and luxury. Grab the leather-wrapped shift knob and steering wheel with paddle shifters, and you're ready to go.

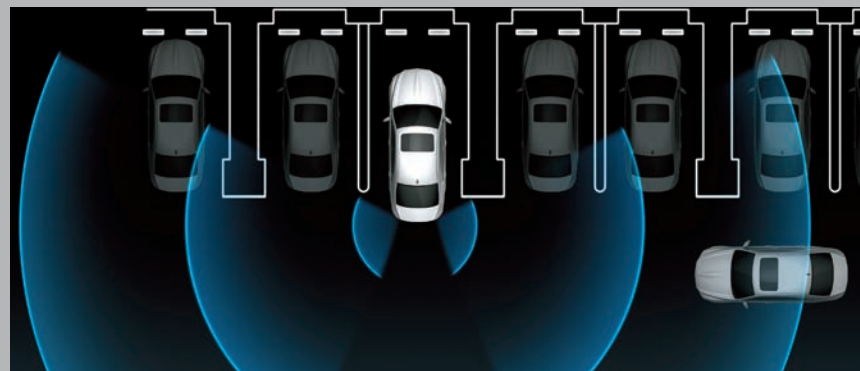
ITS BIGGEST EMISSIONS
ARE THRILLS.

The LS was the world's first prestige luxury hybrid sedan and the first AWD V8 hybrid. The 2015 LS Hybrid offers a road-owning 438 total system net horsepower thanks to its potent 5.0-litre 32-valve V8 VVT-iE engine with three High-Torque Electric Drive motors and a powerful hybrid battery.³⁰ It flies from 0-60 mph in just 5.6 seconds.



SAFE AND TECHNOLOGICALLY SOUND.

The legacy of safety continues unabated, as the LS offers an unequalled array of sophisticated safety technology advancements. Available on the LS 600h, the LS 460 AWD Technology Package or the LS 460L AWD Executive Package, the Pre-Collision System¹² helps predict and react to collisions – and even helps detect pedestrians. In an unavoidable collision, it immediately assists you in initiating a series of steps to reduce the potential for injury. In speeds up to 40 km/hr, the PCS can help bring the LS to a complete halt. The Driver Attention Monitor¹⁵ keeps its infrared camera eye on the position of your head as you drive, and if your head is turned as a potential collision is detected, it sounds an alert. And if a collision is deemed unavoidable, then Brake Assist²⁴ applies the brakes and seatbelts are tightened.



REAR CROSS-TRAFFIC ALERT When in reverse, the available Rear Cross-Traffic Alert System¹⁷ uses quasi-millimetre wave radar to help detect any vehicles approaching behind the LS and warns the driver via audio alert and side-mirror indicators.

STANDARD LUXURY

LUXURY AND CONVENIENCE:

- SmartAccess with push-button Start/Stop¹
- Multi-function, in-key remote entry system with rolling-code technology
- Dual-zone automatic climate control
- Power moonroof
- HomeLink® universal transceiver²
- Auto-dimming outside rearview mirrors
- Lexus Personalized Settings (LPS) to customize select electronic functions
- Power retractable rear windshield sunshade
- Power door closers and power trunk open/close
- Backup camera³
- 4-Zone Climate Concierge with heated and air conditioned rear outboard seats (LS 460L, LS 600h)
- Rear outboard seat massage settings (LS 600h)
- Power retractable rear door sunshades (LS 600h)
- Laminated rear door window glass (LS 600h)
- Alcantara headliner (LS 600h)
- Rear cool box (LS 460L)

SEATING AND TRIM:

- Perforated premium leather seat surfaces
- Wood and leather interior trim
- Heated wood-trimmed steering wheel
- Power tilt-and-telescopic steering wheel with automatic tilt-away
- 16-way power-adjustable driver seat (including lumbar) with auto slide-away
- 12-way power-adjustable front passenger seat (including lumbar)
- Leather and wood-trimmed shift knob
- Climate control settings for front seats with heat and air conditioning
- Driver Seat Memory System
- Power-adjustable rear outboard seats and memory setting (LS 460L)
- Rear outboard seat butterfly headrests (LS 460L)

AUDIO, COMMUNICATIONS AND INSTRUMENTATION:

- 19-Speaker Mark Levinson® Surround Sound System⁴
- Voice-activated Navigation System with Remote Touch and 12.3-inch multimedia display⁷
- Integrated XM® Satellite Radio⁵
- USB and auxiliary minijack audio input for iPod/iPhone® and music player integration with audio system⁶
- Bluetooth® audio profile for wireless integration of compatible music players and automatic phonebook synchronization⁸
- Electroluminescent instrumentation
- GPS-linked, aluminium-trimmed analog clock with LED illumination
- Steering wheel-mounted audio, phone and display controls
- Drive Mode Select with Normal, Eco, Sport, Sport+, and Comfort Mode
- Intuitive parking assist

STANDARD SAFETY AND SECURITY

ACTIVE SAFETY:

- Blind Spot Monitoring (with Rear Cross-Traffic Alert)¹⁶
- Vehicle Dynamics Integrated Management (VDIM)⁹
- Vehicle Stability Control (VSC)⁹
- Electronic Brake-force Distribution (EBD)
- Smart Stop Technology¹⁰
- Direct Tire Pressure Monitor System¹¹
- Power adjustable, auto-folding, heated exterior rearview mirrors with integrated LED turn signal lamps, puddle lamps
- Laminated and water-repellent front-door glass
- Rain-sensing wipers with deicer
- Bi-Xenon HID headlamps with dynamic auto-leveling
- Dual-swivel Adaptive Front Lighting System (AFS)
- LED daytime running lamps
- LED fog lamps
- LED brake lamps

- Advanced Pre-Collision System (LS 600h)¹²
- Active Pedestrian Detection System (LS 600h)¹³
- Lane Keep Assist (LS 600h)¹⁴
- Driver Attention Monitor (LS 600h)¹⁵
- Blind Spot Monitor¹⁶
- Rear Cross-Traffic Alert¹⁷
- Variable Gear Ratio Steering (VGRS) (LS 460L, LS 600h)
- Adaptive Variable Suspension (AVS) (LS 460L, LS 600h)
- LED headlamps with dynamic auto-leveling (LS 600h)
- Intelligent high-beam headlamps (LS 600h)¹⁸
- UV Cut Glass
- Dynamic Radar Cruise Control (LS 460L)²⁵
- Pre-Collision System (LS 460L)¹²

PASSIVE SAFETY:

- Driver and front-passenger airbag system (SRS)¹⁹
- Front seat-mounted side airbags¹⁹
- Rear outboard seat-mounted side airbags¹⁹
- Front and rear side curtain airbags¹⁹
- Driver and front-passenger knee airbags¹⁹
- Active front headrests²⁰
- Whiplash Injury Lessening (WIL) front seats²⁰
- Child Restraint System (CRS) tether anchor brackets for rear outboard seats¹⁹
- Power-adjustable rear outboard seats and memory setting (LS 600h)
- Intelligent high-beam headlamps (LS 460L)¹⁸

SECURITY:

- Vehicle theft-deterrent system
- Engine immobilizer system
- Tool kit
- First aid kit

LEXUS GENUINE ACCESSORIES:

- Block heater
- Cargo net
- Paint protection film

STANDARD SPECIFICATIONS

CURB WEIGHT

LS 460 AWD	2,140 kg/4,277 lb
LS 460L AWD	2,160 kg/4,365 lb
LS 600h L	2,370 kg/5,255 lb

ENGINE TYPE

LS 460

- > V8, 4.6 litres
- > Direct and port fuel injection
- > Dual Variable Valve Timing with intelligence and Electronic intake valve timing (VVT-iE)

LS 600h L

- > V8, 5.0 litres
- > Direct and port fuel injection
- > Lexus Hybrid Drive
- > Dual Variable Valve Timing with intelligence and Electronic intake valve timing (VVT-iE)

HORSEPOWER @ RPM

LS 460 AWD	386 hp @ 6,400 rpm ²¹
LS 460L AWD	360 hp @ 6,400 rpm ²¹
LS 600h L	438 hp (total system net horsepower) ²¹

TORQUE @ RPM

LS 460 AWD	347 lb-ft @ 4,100 rpm ²¹
LS 460L AWD	347 lb-ft @ 4,100 rpm ²¹
LS 600h L	384 lb-ft @ 4,000 rpm ²¹
Electric Engine	221 lb-ft ²¹

FUEL ECONOMY ESTIMATES

(City/Hwy/Combined)	
LS 460 AWD	15.2/10.2/12.9 L/100 km ²² (19/28/22 mpg) ²²
LS 460L AWD	15.2/10.2/12.9 L/100 km ²² (19/28/22 mpg) ²²
LS 600h L	12.7/10.1/11.5 L/100 km ²² (22/28/25 mpg) ²²

AERODYNAMIC DRAG COEFFICIENT

LS 460 AWD	0.27
LS 600h L	0.27

BODY AND DIMENSIONS

OVERALL LENGTH

LS 460	5,090 mm (200.0 in)
LS 460L	5,210 mm (205.0 in)
LS 600h L	5,210 mm (205.0 in)

WHEELBASE

LS 460	2,970 mm (116.9 in)
LS 460L	3,090 mm (121.7 in)
LS 600h L	3,090 mm (121.7 in)

WIDTH

1,875 mm (73.8 in)

HEIGHT

LS 460	1,475 mm (58.1 in)
LS 460L	1,465 mm (57.7 in)
LS 600h L	1,480 mm (58.3 in)

HEADROOM (FRONT)

965 mm (38.0 in)

HEADROOM (REAR)

964 mm (38.0 in)

LEGROOM (FRONT)

1,110 mm (43.7 in)

LEGROOM (REAR)

LS 460	909 mm (35.8 in)
LS 460L	933 mm (36.7 in)
LS 600h L	933 mm (36.7 in)

SHOULDER ROOM (FRONT)

1,487 mm (58.5 in)

SHOULDER ROOM (REAR)

LS 460	1,446 mm (56.9 in)
LS 460L	1,432 mm (56.4 in)
LS 600h L	1,432 mm (56.4 in)

TRUNK CAPACITY

(max)

LS 460	510 litres (18.0 cubic feet)
LS 460L	450 litres (15.9 cubic feet)
LS 600h L	370 litres (13.0 cubic feet)

FUEL TANK CAPACITY

84 litres/18.5 gallons

DRIVETRAIN

DRIVE WHEELS

- > All-wheel drive with TORSEN® limited-slip centre differential²³ (LS 460 AWD, LS 460L AWD, LS 600h L)
- > Vehicle Dynamics Integrated Management (VDIM)⁹
- > Vehicle Stability Control (VSC)⁹
- > Traction Control (TRAC)
- > Drive Mode Select

TRANSMISSION

- > 8-Speed automatic
- > Electronically Controlled Transmission with intelligence (ECT-i)
- > Sequential shift
- > Electronically controlled Continuously Variable Transmission (ECVT)

CHASSIS

FRONT SUSPENSION

Independent upper and lower multi-link double-joint suspension arms with stabilizer bar

REAR SUSPENSION

- > Independent, multi-link with coil springs, gas-pressurized shock absorbers and stabilizer bar (LS 460)
- > Adaptive Variable Suspension (AVS) (LS 460 available)
- > Adaptive Variable Suspension (AVS) (LS 600h L)
- > *F SPORT*-tuned, lowered suspension (LS 460 *F SPORT*)

STEERING

- > Electric Power Steering (EPS)
- > Variable Gear-Ratio Steering (VGRS) (LS 460 available)
- > Variable Gear-Ratio Steering (VGRS) (LS 600h L)

BRAKES

- > Four-wheel power-assisted disc brakes
- > Electronic Controlled Braking (ECB)
- > Four-sensor, four-channel Anti-lock Brake System (ABS)
- > Electronic Brake-force Distribution (EBD)
- > Brake Assist (BA)²⁴
- > Electronic parking brake
- > Regenerative braking system (LS 600h L)
- > 14.8-inch ventilated front discs with Brembo® opposed six-piston calipers, 13.1-inch ventilated rear discs (*F SPORT*)

TIRES

- > P245/45R19 all-season tires
- > Temporary spare tire

WHEELS



LS 460 standard
LS 460L standard
LS 600h L standard
19-inch split 7-spoke alloy wheels



LS 460 *F SPORT* available
19-inch split 10-spoke alloy wheels

EXTERIOR



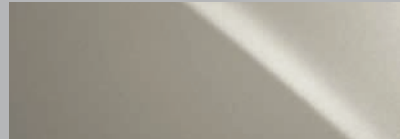
STARFIRE PEARL.....0077



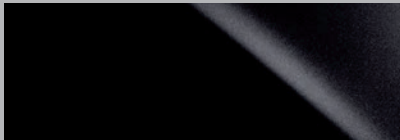
ULTRA WHITE.....0083



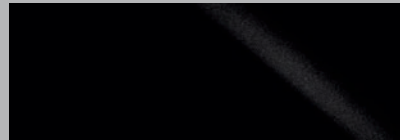
NEBULA GREY PEARL.....01H9



ATOMIC SILVER.....01J7



OBSIDIAN.....02I2



STARLIGHT BLACK MICA.....02I7



FIRE AGATE PEARL.....04V3

INTERIOR



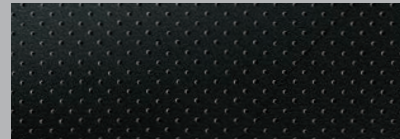
PREMIUM LEATHER - PERFORATED.....PARCHMENT



PREMIUM LEATHER - PERFORATED.....BLACK



PREMIUM LEATHER - PERFORATED.....*F SPORT* FLAXEN



PREMIUM LEATHER - WHITE PERFORATED.....*F SPORT* BLACK

INTERIOR TRIM



DARK BROWN.....WALNUT



ESPRESSO.....SHIMAMOKU



GENUINE.....ALUMINUM

2015 LS

TECHNOLOGY PACKAGE
 F SPORT PACKAGE
 EXECUTIVE PACKAGE
 PREMIUM EXECUTIVE PACKAGE

TECHNOLOGY PACKAGE

Available on LS 460 AWD

LS
460

Pre-Collision System ¹²	•
Dynamic Radar Cruise Control ²⁵	•
Variable Gear Ratio Steering (VGRS)	•
Adaptive Variable Suspension (AVS)	•
Rear outboard seat-mounted side airbags ⁹	•
Power-adjustable rear outboard seats and memory setting	•
4-Zone Climate Concierge with heated and air conditioned rear outboard seats	•
Rear outboard seat massage settings	•
Power retractable rear door sunshades	•
Rear outboard seat butterfly headrests	•
Rear seat cool box	•
Laminated rear door window glass	•
Rear seat side airbags	•
Lumbar support	•
Automatic high beam	•

F SPORT PACKAGE

LS
460

F SPORT 19-inch split 10-spoke forged alloy wheels	•
F SPORT tuned, lowered Adaptive Variable Suspension (AVS)	•
F SPORT tuned Electric Power Steering (EPS) with Variable Gear Ratio Steering (VGRS)	•
Brembo [®] high friction brake pads, calipers and rotors	•
Drive Mode Select with Sport S+ Mode	•
F SPORT front bumper, upper and lower grille inserts, rear diffuser	•
F SPORT front grille	•
F SPORT doorsill trim	•
F SPORT black leather-trimmed interior with white perforations	•
F SPORT bolstered front seats with embossed headrests	•
F SPORT leather-wrapped steering wheel with paddle shifters	•
F SPORT leather-wrapped shift knob	•
F SPORT aluminum sport pedals	•
F SPORT aluminum interior trim	•
Black alcantara headliner	•
Blind Spot Monitor ¹⁶	•
Rear Cross-Traffic Alert ¹⁷	•
Pre-Collision System ¹²	•
Dynamic Radar Cruise Control	•
Driver Attention Monitor ¹⁵	•
Automatic High Beam	•

EXECUTIVE PACKAGE

LS
460 L

Premium leather seat surfaces	•
Rear outboard seat massage settings	•
Power retractable rear door sunshades	•
Electric Power Steering with Variable Gear Ratio Steering (EPS with VGRS)	•
Sunshade on rear glass	•
Rear Seat Entertainment System with Blu-ray [®] DVD player ²⁶	•
Rear seat audio controls and wireless headphones ²⁹	•
Right-rear seat power-adjustable recline and retractable ottoman	•
Right-rear seat ottoman seat cushion airbag ⁹	•
Right-rear seat multifunction Shiatsu massage settings	•
Left-rear seat massage settings	•
Infrared body temperature sensor	•
Leather covered lower instrument panel and door armrests	•
Lexus Night View ²⁷	•
Active Pedestrian Detection System ¹³	•
Driver Attention Monitor ¹⁵	•
Advanced Pre-Collision System ¹²	•
Lane Keep Assist ¹⁴	•
LED headlamps with dynamic auto-leveling	•

PREMIUM EXECUTIVE PACKAGE

Technology Package PLUS:

LS
600h L

Full Auto Brake	•
Leather covered lower instrument panel and door armrests	•
Lexus Night View ²⁷	•



SERVICE COMMITMENT

On top of enjoying the highest quality product, Lexus also delivers through a professional Dealer network, a unique and uncompromising level of after-sales service. First Class Service Concept. The highest level of professionalism and vehicle support ensure that Lexus ownership experience is as luxurious as the vehicles.

WARRANTY

Our Lexus Warranty Comprehensive Coverage includes:

48 months/80,000 km

Hybrid-Related Components

96 months/160,000 km (applies to battery control module, hybrid vehicle control module, hybrid battery and the inverter/converter)

Powertrain

72 months/110,000 km

Corrosion Perforation

72 months/unlimited kilometres

Major Emission Control Components

96 months/130,000 km

Please see your Lexus Dealer for details. Lexus will even provide five days of alternate transportation if your vehicle is required to stay at the dealership for an extended period of time due to a warrantable condition.

EXTRA CARE PROTECTION

Extend beyond the new vehicle warranty and enhance your peace of mind with Lexus Extra Care Protection.

ROADSIDE ASSISTANCE

As a proud owner of a Lexus vehicle you won't have to worry about obtaining assistance when mishaps requiring Emergency Roadside Service or Mechanical Breakdown Towing are needed. Throughout Canada and the continental U.S., our Central Emergency Roadside Services Operator will always be there to ensure you receive prompt, efficient services from one of the many facilities qualified under our approved Roadside Assistance Program. Twenty-four hours a day, 365 days a year we will be there to help.

LEXUS FINANCIAL SERVICES

Come talk to the experts whose exclusive business is financing and leasing Lexus vehicles. You'll find our interest rates fully competitive and our terms flexible - up to 72 months. Our online services conveniently allow you to confirm current rates and receive your credit approval in advance of selecting the Lexus that's right for you. For help, visit your Lexus Dealer or lexus.ca, or call 1-800-26-LEXUS.

LEXUS CANADA

Every effort has been made to ensure the specifications and equipment shown are accurate based on information available at time of printing. In some cases, certain changes in standard equipment, options or product delays may occur, which would not be reflected in this brochure. Lexus Canada reserves the right to make these changes without notice or obligation. Some of the photography in this brochure features U.S. or overseas models, shown with optional equipment that may not be available in Canada. Your Lexus Dealer is the best source for up-to-date information.

lexus.ca 1-800-26-LEXUS

To sign up for information on Lexus, go to experience.lexus.ca

Lexus, One Toyota Place,
Toronto, Ontario M1H 1H9



Vehicles in this brochure shown with optional equipment. Some features mentioned and/or shown in this brochure may only be available as part of an optional package. Under very cold conditions, the operation of some vehicle electronic systems using liquid crystal technology (such as CD, DVD, NAV and Audio displays) may be adversely affected until a warmer interior vehicle temperature is reached. Lexus reminds you to place small children in CSA-approved car seats – in the rear seats, to always wear your seatbelts, and to drive safely. **1.** The SmartAccess system may interfere with some pacemakers or cardiac defibrillators. If you have one of these medical devices, please talk to your doctor to see if you should deactivate this system. **2.** HomeLink is a registered trademark of Johnson Controls. **3.** The backup camera does not provide a comprehensive view of the rear area of the vehicle. You should also look around outside your vehicle and use your mirrors to confirm rearward clearance. **4.** Mark Levinson is a registered trademark of Harman International Industries Inc. **5.** Functioning Satellite Radio requires a monthly service fee. Please see your Lexus Dealer for further details. Reception of satellite signal may vary depending on location. **6.** iPod/iPhone® is a registered trademark of Apple Inc. **7.** The Navigation System is designed to assist in locating an address or point of interest. Discrepancies may be encountered between the system and your actual location. Road system changes may affect the accuracy of the information provided. Rely on your common sense to decide whether to follow a specified route. Detailed coverage not available for every city or roadway. Periodic updates available at an additional cost. See your Navigation System Owner's Manual for further details. Navigational systems in some vehicles are available with bilingual capability. **8.** Lexus tests certain Bluetooth® capable phones for compatibility with Lexus vehicles. Please see your Lexus Dealer for details. Note that the recommendation of Lexus is not a warranty of the performance for any phone and that some problems may occur with any type of handset based on the phone software version or the service coverage available in your area. **9.** Vehicle Stability Control (VSC) and if applicable Vehicle Dynamics Integrated Management (VDIM) are electronic systems designed to help the driver maintain vehicle control under adverse conditions. They are not substitutes for safe driving practices. Factors including speed, road conditions and driver steering input can all affect whether VSC and VDIM will be effective in preventing a loss of control. Please see your Owner's Manual for further details. **10.** Smart Stop Technology operates only in the event of certain simultaneous brake and gas pedal applications. When engaged, the system will reduce engine power to help the brakes to bring the vehicle to a stop. Factors including speed, road conditions, driver input can all impact stopping distance. Smart Stop Technology is not a substitute for safe and attentive driving and does not guarantee instant stopping. Please see your Owner's Manual for further details. **11.** The Lexus Tire Pressure Monitor System alerts the driver when tire pressure is critically low. For optimal tire wear and performance, tire pressure should be checked regularly with a gauge. Do not rely solely on the monitor system. Please see your Owner's Manual for details. **12.** The Pre-Collision System is designed to help reduce the crash speed and damage in certain frontal collisions only. It is not a collision avoidance system and is not a substitute for safe and attentive driving. System effectiveness depends on many factors, such as speed, driver input and road conditions. Please see your Owner's Manual for further information. **13.** The Active Pedestrian Detection System, part of the Advanced Pre-Collision System, is designed to help reduce the impact speed and damage in certain frontal collisions only. It is not a collision-avoidance system and is not a substitute for safe and attentive driving. System effectiveness depends on many factors, such as speed, driver input and road conditions. Please see your Owner's Manual for further information. **14.** Lane Keep Assist is designed to read the lane markers of certain roads and apply slight torque to the steering wheel to help keep the car in the centre of the lane. If the vehicle approaches the outer limits of its lane, the Lane Departure Warning feature sounds a warning tone and applies slight torque to the steering wheel to notify the driver that corrective action may be required. These features are not a collision-avoidance system and are not a substitute for safe and attentive driving. System effectiveness depends on many factors. Please see your Owner's Manual for further information. **15.** The Driver Attention Monitor is designed to alert the driver if a potential hazard is detected ahead and the driver's face appears to be turned away. It is not a collision-avoidance system and is not a substitute for safe and attentive driving. System effectiveness depends on many factors. Please see your Owner's Manual for further information. **16.** Do not rely exclusively on the Blind Spot Monitor System to determine if a lane change is safe. Always look over your shoulder and use your turn signal before changing lanes. There are severe limits to the function, detection range and clarity of the monitor system. For a complete list of limitations and directions regarding use of the monitor system, please see your Owner's Manual. **17.** Do not rely exclusively on the Rear Cross-Traffic Alert System. There are limitations to the function, detection and range of the system. You should also look around outside your vehicle, over your shoulder and use your mirrors to confirm rearward clearance. For a complete list of limitations and directions, please see your Owner's Manual. **18.** Intelligent high-beam system operates at speed above 21 mph. Situations such as a dirty windshield, variable weather, lighting conditions and hilly terrain will limit effectiveness, requiring the driver to turn off manually. See Owner's Manual for details. **19.** All the airbag ("AB") systems are Supplemental Restraint Systems. All ABs (if installed) are designed to inflate only under certain conditions and in certain types of severe collisions: frontal and knee ABs typically inflate in frontal collisions; side and side curtain ABs in side collisions; Roll-Sensing Curtain ABs at a severe tilt degree, roll or lateral G-force. In all other accidents, the ABs will not inflate. To decrease the risk of injury from an inflating AB, always wear seatbelts. Do not use a rearward-facing child seat in any front passenger seat. Please see your Owner's Manual for further information/warnings. **20.** Active headrests can help reduce the extent of whiplash in certain types of rear-end collisions. **21.** Ratings achieved using the required premium unleaded gasoline with an octane rating of 91 or higher. **22.** Fuel efficiency estimates were determined using approved Government of Canada Test Methods. Actual fuel consumption will vary based on driving habits and other factors. **23.** TORSEN® is a registered trademark of Zexel Torsen, Inc. **24.** Brake Assist is designed to help the driver take full advantage of the benefits of ABS. It is not a substitute for safe driving practices. Braking effectiveness also depends on proper brake-system maintenance and tire and road conditions. **25.** Dynamic/Radar Cruise Control was designed to assist the driver and is not a substitute for safe and attentive driving practices. Please see your Owner's Manual for important cautions and instructions. **26.** A single disc DVD player is standard on vehicles equipped with the dual-screen Rear-Seat Entertainment System. A separate DVD player or game system utilizing the centre console's video/audio inputs is required in order to use the split-screen function. **27.** Night View is designed to alert the driver to objects beyond the projected light of the low-beam headlamps. Driver should only glance at image occasionally. Factors including cold weather and the vehicle's air conditioner may limit the effectiveness of the system. **28.** The Active Pedestrian Detection System, part of the Advanced Pre-Collision System, is designed to help reduce the impact speed and damage in certain frontal collisions only. It is not a collision-avoidance system and is not a substitute for safe and attentive driving. System effectiveness depends on many factors, such as speed, driver input and road conditions. Please see your Owner's Manual for further information. **29.** Headphones are for passenger use only. Do not use while operating vehicle. **30.** The Lexus Hybrids have nearly 70% fewer smog-forming emissions compared against similarly equipped conventional gasoline power vehicles. Based on North American sales data and Federal Tier 2 engine emission requirements.

LEXUS



COTCI-15LSE-20 (2.8M)