



2012 370Z™





INNOVATION  
THAT'S LEGENDARY.

The Nissan 370Z,<sup>™</sup> the purest definition of a sports car. Experience the adrenaline rush as 332 HP and 3.7 L of VVEL technology spins effortlessly to a 7500 rpm redline. Marvel as the world's first SynchroRev Match<sup>™</sup> manual transmission gives you a seamless downshift. Bend into a corner and find the precision and balance that only comes from over 40 years of dedication to the pure joy of driving. A pulse-quickenning Coupe. A Roadster that invites the elements to play. Innovation that's legendary. Innovation for all.

Nissan 370Z<sup>™</sup> Touring Coupe with Sport Package shown in Airstream and 370Z<sup>™</sup> Touring Roadster with Sport Package shown in Gun Metallic.



Nissan 370Z™ Touring Roadster with Sport Package shown in Black Rose.

## THE Z® ROADSTER: A BREATH OF FRESH AIR.

Taste freedom as the breeze brushes your face. Hear the sound of 332 pure horsepower through a tuned exhaust. Embrace the sky in just 20 seconds as the Roadster folds its power top. Drop it from the outside door handle before you even get in. Because the great outdoors just can't wait!



Top down or up, this roadster is made to spoil you. Sometimes a little wind in your hair can get to be too much of a good thing, so Z® Roadster was designed to minimize air buffeting in and around the cabin. With the top up, the double-insulated roof helps keep the interior warmer on cool days, resulting in less road noise, too. So whenever the feeling strikes, feel free to enjoy your Z® Roadster.<sup>1</sup>

Heated and cooled seats built to pamper you. Enjoy top-down driving for longer. Circulating either cool or warm air through the perforated material of the seatbacks and bottom cushions, these available ventilated seats keep you comfortable and hold you firmly as the Z® Roadster zips through the corners.



<sup>1</sup>Do not drive vehicle with the top partially opened. Always make sure the top is either fully opened or closed before driving. See Owner's Manual regarding proper use.

THE ABSOLUTE JOY OF  
UNADULTERATED PERFORMANCE.

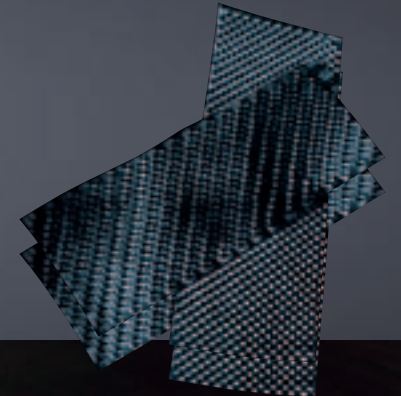


Nissan 370Z™ Touring Coupe with Sport Package shown in Solid Red.



**The legend continues with 332 HP.** The 370Z™ is powered by the 4th-generation VQ V6 engine. With 3.7-litre displacement for massive muscle, this 332 HP dynamo features advanced Variable Valve Event and Lift (VVEL) technology that continuously tunes valve lift and timing for quicker response and a broader torque curve, while optimizing fuel economy and reducing emissions. And while this extensive engineering may sound extremely technical, the exhilaration from idle to the 7500 rpm redline – on the straights or through the corners – is pure magic.

**Lightweight components.** It's common knowledge in engineering circles that every 10 lbs. (4.5 kg) a vehicle sheds is like gaining one horsepower. So along with the stunning power of the 3.7-L V6, Nissan ensured there wasn't a gram of unnecessary weight on the 370Z™. The rear hatch and doors are made from ultra-strong lightweight aluminum, while even details like the weight of the audio system were scrutinized. High-tech materials include a carbon-fibre composite driveshaft that is not only incredibly strong, but also helps the engine rev more quickly, as well as a weight-saving carbon-fibre composite radiator support structure. More power and less weight. Quicker acceleration and agile response. Truly a win-win situation.



## THE PRECISION OF A PERFECTLY MATCHED DOWNSHIFT.



### 6MT designed for perfectionists

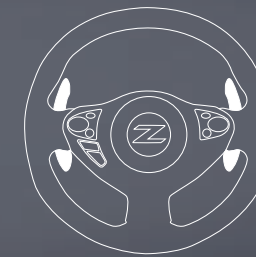
**World's first rev-matching manual transmission.** Usually, a smooth downshift requires a delicate balancing act of matching the engine's rpm to the vehicle's speed and letting out the clutch – easier said than done. With SynchroRev Match™ technology, included in the Sport Package, a seamless downshift is in the palm of your hand. By smoothing the transitions between shifts, the chassis stays more balanced – especially important when tackling an exhilarating corner. Making this one transmission that's as much about handling as it is about power.



### 7AT designed for enthusiasts

**Everything great about a manual – except the clutch pedal.** Take the traffic-beating convenience of an automatic, factor in the power and flexibility of a manual, and you've got the 370Z™ 7-speed automatic transmission. Seven speeds give you a wide spread of gearing for both heart-pounding acceleration and quiet high-speed cruising. With a choice of driver-selectable modes, you can custom-tailor your driving experience like never before. And with Downshift Rev Matching, you've got the kind of ultra-quick, seamless downshifts that no manual transmission can match. Except, of course, the 370Z™ SynchroRev Match™ 6-speed manual.

**SynchroRev Match™ explained.** This groundbreaking technology monitors the 6-speed manual's clutch pedal, shift lever and vehicle speed. As you shift to a lower gear, the system will “blip” the throttle to the ideal engine rpm for a supremely smooth downshift as you let out the clutch. The system also works when upshifting to give you a smooth flow of power when accelerating. If you want to marvel at modern technology, feel the difference for yourself by turning the system off with a button mounted next to the shift lever.



**Driver-selectable modes.** Want effortless cruising? Put the automatic transmission in “D.” For momentary manual operation – for example to downshift to pass traffic – lightweight magnesium paddle shifters mounted on the steering column give you fingertip control. In Manual mode, you get manual-style control with exceptionally quick shifts with a nudge of the shift lever or a pull of the paddle shifters. The transmission can even hold a gear in cornering for better balance, or downshift before a corner for more effective braking. And when a downshift is needed, Downshift Rev Matching automatically opens the throttle to match the rpm for smoother gear changes.

## IN THE PURSUIT OF G-FORCES.

Designed to conquer every corner, the Nissan 370Z™ starts with a low centre of gravity and a short wheelbase for quick response. Structural supports under the hood and along the body reinforce the chassis to handle the loads the suspension can dish out. Add in an enthusiast's wish list of high-performance componentry. And at every turn of the wheel, find pure joy as the 370Z™ turns handling science into pure performance art.



W-rated High-performance Tires

Aluminum Suspension Components

14" Front Brake Rotors

19" Forged Alloy Wheels

**53/47 weight distribution.** Some consider a static 50/50 balance to be the perfect weight distribution for handling. But Nissan engineers realized that a 53 front/47 rear static ratio is actually ideal. At the precise moment the driver accelerates out of a corner's apex, the weight distribution shifts rearward and becomes an approximate 50/50 balance. This translates into enhanced tire contact for better acceleration, quicker turns and a handling feel that's uniquely Z.®

**Vehicle Dynamic Control.<sup>1</sup>** A great sports car shouldn't just exhilarate, it should also inspire confidence. Vehicle Dynamic Control (VDC) on the 370Z™ continuously monitors the speed of each wheel, steering angle, yaw, lateral G-forces and even braking pressure. It compares the data to the steered vehicle path and, if it senses the onset of plowing (understeer) or fishtailing (oversteer), VDC brakes individual wheels and/or reduces engine power to help keep you on your steered course.

**Lightweight suspension components.** The lighter a suspension's components, the more quickly it can react to the driver and bumps in the road. Use of strong yet lightweight aluminum makes the Z.® suspension extremely responsive. Its double-wishbone front and 4-link rear design helps to keep the tires vertical to the ground, maximizing their contact patches. Dual flow pass shocks enhance control. And super-light forged 19" alloy wheels are available for even quicker response.

**4-piston brake calipers on 14" front rotors.** Balance doesn't just apply to cornering. Bringing the powerful Z.® to a halt are its largest brakes ever – available 14" front rotors, with the gripping power of 4-piston front calipers. Purpose-designed ducting helps to reduce fade and provide predictable and precise stopping power.

<sup>1</sup>VDC, which should remain on when driving except when freeing the vehicle from mud or snow, cannot prevent accidents due to abrupt steering, carelessness, or dangerous driving techniques. Always drive safely.



Nissan 370Z™ Touring Coupe with Navigation Package shown in Charcoal Leather.

## TECHNOLOGY THAT LOVES TO PLAY IN TRAFFIC.

**Bose® audio system.** Because even the most dedicated enthusiast might want to listen to something other than its spine-tingling dual-exhaust note, the 370Z™ Coupe and Roadster feature a Bose® audio system custom-engineered for the unique shape of the interior. And since it's also capable of playing MP3/WMA CDs and receiving XM® Satellite Radio, you can have the perfect soundtrack for any driving adventure.<sup>1</sup>



**XM® Satellite Radio.** With 170 channels of news, sports, music and more, there's always something worth listening to on available satellite radio. And if your favourite artist is playing on one of those channels, the Z®'s audio system alerts you, and asks if you want to switch over.<sup>1</sup>



**USB input.** Plug your iPod® into the available USB input and you can control its functions through the audio system or touch-screen monitor, plus get song readouts on the digital display.<sup>2</sup> No iPod®? No problem. You can also play digital music files from a USB flash drive or other compatible storage device. You can even watch movies on the LCD screen while your Z® is parked.



**Bluetooth®.** Both hands on the wheel means no hands on the cell phone. The Bluetooth® Hands-Free Phone System has a voice-recognition feature that allows you to make and receive calls through the audio system. On Z® models with the available navigation system, you can even stream music from any compatible device via Bluetooth® wireless technology.<sup>3</sup>

## THE CUSTOM FIT OF A DRIVER-OBSSESSED INTERIOR.

You see one of the best-looking interiors ever put into a sports car. But it also looks like one of the smartest. Nissan's innovative three-layer design groups items by how the driver sees, touches, and is held in place, so you'll feel completely connected the instant you settle in behind the wheel. No detail is left untouched, from the iconic triple gauges atop the dash down to integrated knee pads and a deeply bolstered driver's seat with anti-slip material.



Navigation System

**Knowledge is power.** Need to find something in unfamiliar territory? The Coupe and Roadster's available Nissan Hard Drive Navigation System has over 5 million points of interest, gas stations, banks and hospitals. Use the convenient touch-screen or hands-free voice recognition to quickly locate what you want or need. The unique 3-D view makes it even easier to get a sense of where you are and where you want to go.<sup>4</sup>



RearView Monitor

**Knowledge is reassuring.** With the 370Z™'s available RearView Monitor, shift into "Reverse" and you get a glimpse of what's directly behind you on the navigation system's large 178 mm (7") VGA screen.<sup>5</sup>

<sup>1</sup>XM® Satellite Radio is available in the 10 Canadian provinces and the 48 contiguous United States. Basic monthly subscription required and sold separately after trial period. Subscription subject to terms and conditions at xmradio.ca. All fees and programming subject to change. © 2011 XM Satellite Radio Inc. The XM name and related logos are registered trademarks of XM Satellite Radio Inc. All other trademarks are the property of their respective owners. <sup>2</sup>Driving is serious business and requires your full attention. Do not operate any devices connected to the USB auxiliary audio input jack while driving. <sup>3</sup>Availability of specific features is dependent upon the phone's Bluetooth® support. Please refer to your phone Owner's Manual for details. The Bluetooth word mark and logos are owned by Bluetooth SIG, Inc., and any use of such marks by Nissan is under licence.

<sup>4</sup>Factory-installed option. Never program while driving. GPS mapping may not be detailed in all areas or reflect current road regulations. <sup>5</sup>Parking aid/convenience feature. Cannot completely eliminate blind spots or warn of moving objects. May not detect every object. Always check surroundings before moving vehicle. Not a substitute for proper backing procedures. Always turn to check what is behind you before backing up. <sup>6</sup>Bose is a registered trademark of The Bose Corporation. <sup>7</sup>iPod is a registered trademark of Apple, Inc. All rights reserved. iPod not included.



DESIGN THAT'S MEANT FOR THE REAL WORLD.

Nissan 370Z™ Touring Coupe shown in Persimmon Leather.



6 standard airbags

Nissan 370Z™ Touring Coupe shown.



**Coupe cargo area.** Plenty of space for the important things in life – like golf clubs. A hidden compartment behind the passenger seat helps conceal valuables from prying eyes.



**Roadster trunk.** A smartly designed convertible top means usable trunk space. Even with the top down, a trip to the grocery store is no problem.



**Active Head Restraints** help reduce the chance of whiplash injuries by moving up and forward toward your head during certain rear-end collisions.



**Seat belt technologies** utilize pre-tensioners to help tighten the belt when front airbags deploy. And if your body puts too much force on the belt, load limiters give a bit.

<sup>1</sup>Airbags are only a supplemental restraint system. Always wear your seat belt. Do not use rear-facing child restraints in this vehicle. All children 12 and under should be properly secured in child restraints, booster seats, or seat belts according to their size. Airbags will only inflate in certain accidents. See your Owner's Manual for details. Inflated airbags shown for illustration purposes only; actual coverage area may differ. Airbags deflate after deployment. 370Z™ Roadster does not include roof-mounted curtain side-impact airbags.

## SPECIFICATIONS

Engine	370Z™ TOURING
VQ37VHR – 3.7-litre DOHC 24-valve V6 aluminum-alloy engine¹	<div><span></span></div>
Horsepower – 332 HP @ 7000 rpm	<div><span></span></div>
Torque – 270 lb-ft @ 5200 rpm	<div><span></span></div>
Bore and stroke – 95.5 x 86.0	<div><span></span></div>
Compression ratio – 11:1	<div><span></span></div>
Maximum engine speed – 7500 rpm	<div><span></span></div>
Emissions – Tier2-Bin5	<div><span></span></div>
Continuously Variable Valve Timing Control System (CVTCS) with	<div><span></span></div>
Variable Valve Event and Lift (VVEL) on intake valves	<div><span></span></div>
Twin-intake system	<div><span></span></div>
Nissan Direct Ignition System with iridium-tipped spark plugs	<div><span></span></div>
Electronic drive-by-wire throttle	<div><span></span></div>
Engine block heater	<div><span></span></div>

Drivetrain	
Longitudinally mid-mounted front engine/Rear-Wheel Drive	<div><span></span></div>
Carbon-fibre composite driveshaft	<div><span></span></div>
6-speed close-ratio manual transmission	<div><span></span></div>
SynchroRev Match™ (manual transmission only)	<div><span><span><span></span></span><sup>S</sup></span></div>
7-speed automatic transmission with manual shift mode, paddle shifters	<div><span></span></div>
and Downshift Rev Matching	<div><span><span><span></span></span><sup>O</sup></span></div>
Viscous limited-slip rear differential	<div><span></span></div>

Wheels/Tires	
18" x 8.0" (front)/18" x 9.0" (rear) aluminum-alloy wheels	<div><span></span></div>
19" x 9.0" (front)/19" x 10.0" (rear) 5-spoke RAYS®	<div><span></span></div>
super-lightweight forged alloy wheels	<div><span><span><span></span></span><sup>S</sup></span></div>
225/50WR18 (front) and 245/45WR18 (rear) Yokohama® ADVAN	<div><span></span></div>
Sport® high-performance tires	<div><span><span><span></span></span><sup>2</sup></span></div>
225/50WR18 (front) and 245/45WR18 (rear) Bridgestone® Potenza®	<div><span></span></div>
high-performance tires	<div><span><span><span></span></span><sup>3</sup></span></div>
245/40WR19 (front) and 275/35WR19 (rear) Bridgestone® Potenza®	<div><span></span></div>
high-performance tires	<div><span><span><span></span></span><sup>S</sup></span></div>

Brakes	
12.6" x 1.10" vented front discs and 12.6" x 0.63" vented rear discs	<div><span></span></div>
Nissan sport brakes – 4-piston opposed aluminum front calipers with	<div><span></span></div>
14.0" x 1.30" vented discs and 2-piston opposed aluminum rear	<div><span></span></div>
calipers with 13.8" x 0.80" vented discs	<div><span><span><span></span></span><sup>S</sup></span></div>
4-wheel Anti-lock Braking System (ABS)	<div><span></span></div>
Electronic Brake force Distribution (EBD)	<div><span></span></div>
Brake Assist (BA)	<div><span></span></div>

Suspension/Reinforcements/Steering	
Front: 2-link double-wishbone aluminum-alloy suspension with	<div><span></span></div>
aluminum subframe	<div><span></span></div>
Rear: 4-link aluminum-alloy suspension	<div><span></span></div>
Front and rear stabilizer bars	<div><span></span></div>
Ripple-control shock absorbers	<div><span></span></div>
3-point front strut tower brace	<div><span></span></div>
Rear underbody V-brace	<div><span></span></div>
Vehicle-speed-sensitive power steering	<div><span></span></div>

- Standard
- Optional
- Sport Package
- Navigation Package

Exterior	370Z™ TOURING
Automatic on/off headlights	<div><span></span></div>
High Intensity Discharge (HID) bi-functional xenon headlights	<div><span></span></div>
LED taillights	<div><span></span></div>
LED illuminated Z® side marker emblems	<div><span></span></div>
Front chin aero deflector	<div><span><span><span></span></span><sup>S</sup></span><sup>2</sup></div>
Body-colour rear spoiler	<div><span><span><span></span></span><sup>S</sup></span><sup>2</sup></div>
Aluminum hood, doors and hatch/trunk	<div><span></span></div>
Body-colour dual power heated outside mirrors	<div><span></span></div>
UV-reducing solar glass	<div><span></span></div>
Rear window defroster	<div><span></span></div>
Power convertible soft-top with glass window	<div><span><span><span></span></span><sup>3</sup></span></div>
Rear wind deflector and power moving storage cover	<div><span><span><span></span></span><sup>3</sup></span></div>

Entertainment	
Digital Bose® audio system with AM/FM/in-dash 6-CD changer	<div><span></span></div>
Eight speakers, including dual subwoofers	<div><span></span></div>
XM® Satellite Radio⁴	<div><span></span></div>
MP3/WMA CD playback capability	<div><span></span></div>
Auxiliary audio input jack	<div><span></span></div>
Auxiliary audio/video input jacks (this feature replaces auxiliary audio	<div><span></span></div>
input jack located on head unit)	<div><span><span><span></span></span><sup>N</sup></span></div>
USB connection port for iPod® interface and other compatible devices	<div><span><span><span></span></span><sup>N</sup></span></div>
Streaming audio via Bluetooth® wireless technology	<div><span><span><span></span></span><sup>N</sup></span></div>
Radio Data System (RDS)	<div><span></span></div>
Speed-sensitive volume control	<div><span></span></div>
Illuminated steering-wheel-mounted audio controls	<div><span></span></div>

Interior	
Nissan Hard Drive Navigation System with 178 mm (7") VGA touch-screen	<div><span></span></div>
monitor and voice recognition	<div><span><span><span></span></span><sup>N</sup></span></div>
RearView Monitor	<div><span><span><span></span></span><sup>N</sup></span></div>
Nissan Intelligent Key® with Push Button Ignition	<div><span></span></div>
Nissan Intelligent Key®-operated soft-top down	<div><span><span><span></span></span><sup>3</sup></span></div>
Automatic Climate Control (ACC) with in-cabin microfilter	<div><span></span></div>
Bluetooth® Hands-Free Phone System	<div><span></span></div>
3-bay gauge cluster (oil temperature, voltmeter and digital clock)	<div><span></span></div>
Fine Vision electroluminescent gauges with multi-function drive computer	<div><span></span></div>
Upshift indicator light	<div><span></span></div>
Power windows with one-touch auto-up/down feature	<div><span></span></div>
Power door locks with auto-locking feature	<div><span></span></div>
Remote windows down	<div><span></span></div>
Key-operated windows up/down	<div><span></span></div>
Illuminated steering-wheel-mounted cruise control	<div><span></span></div>
HomeLink® universal garage-door opener	<div><span></span></div>
12-volt DC power outlets (2) and map lights	<div><span></span></div>
Tilt steering column with integrated gauges	<div><span></span></div>
Variable intermittent windshield wipers	<div><span></span></div>
Auto-dimming rearview mirror	<div><span></span></div>
Single visor with illuminated vanity mirror	<div><span></span></div>
Sun visor extenders	<div><span><span><span></span></span><sup>2</sup></span></div>
Cup holders (3) and lockable glove compartment	<div><span></span></div>
Dash-mounted storage (not available with navigation)	<div><span></span></div>
Parcel shelves (behind seats)	<div><span></span></div>
Parcel box (behind passenger seat)	<div><span></span></div>
Rear cargo cover	<div><span><span><span></span></span><sup>2</sup></span></div>

Seating/Appointments	370Z™ TOURING
Leather-appointed sport seats	<div><span><span><span></span></span><sup>2</sup></span></div>
Ventilated leather-appointed sport seats	<div><span><span><span></span></span><sup>3</sup></span></div>
8-way adjustable driver’s seat	<div><span></span></div>
4-way adjustable passenger’s bucket seat	<div><span></span></div>
Power seats	<div><span></span></div>
Heated seats (Roadster also includes cooling)	<div><span></span></div>
Driver’s adjustable lumbar support	<div><span></span></div>
Driver-shaped bucket seat with thigh support	<div><span></span></div>
Driver and passenger knee support	<div><span></span></div>
Synthetic suede door inserts	<div><span></span></div>
Leather-wrapped steering wheel, shift knob and parking brake lever	<div><span></span></div>
Aluminum-trimmed pedals	<div><span></span></div>

Safety/Security	
Nissan Advanced Airbag System (AABS) with dual-stage supplemental	<div><span></span></div>
front airbags with seat belt and occupant-classification sensors	<div><span></span></div>
Driver and passenger seat-mounted side-impact supplemental airbags	<div><span></span></div>
Roof-mounted curtain side-impact supplemental airbags for occupants	<div><span></span></div>
head protection	<div><span><span><span></span></span><sup>2</sup></span></div>
Door-mounted curtain side-impact supplemental airbags for occupants	<div><span></span></div>
head protection	<div><span><span><span></span></span><sup>3</sup></span></div>
Vehicle Dynamic Control (VDC) with Traction Control System (TCS)	<div><span></span></div>
Seat belts with pre-tensioners and load limiters	<div><span></span></div>
(3-point ALR/ELR passenger seat belt system)	<div><span></span></div>
Active Head Restraints	<div><span></span></div>
Energy-absorbing steering column	<div><span></span></div>
Zone Body construction with front and rear crumple zones	<div><span></span></div>
Hood-buckling creases	<div><span></span></div>
Aluminum side-door guard beams	<div><span></span></div>
Tire Pressure Monitoring System (TPMS)	<div><span></span></div>
Immobilizer Key System	<div><span></span></div>
Anti-theft system	<div><span></span></div>

## PACKAGES

<span><span><span></span></span><span> </span></span> <b>Sport Package</b>	
Nissan sport brakes – 4-piston opposed aluminum front calipers with	<div><span></span></div>
14.0" x 1.30" vented discs and 2-piston opposed aluminum rear	<div><span></span></div>
calipers with 13.8" x 0.80" vented discs	<div><span></span></div>
SynchroRev Match™ (manual transmission only)	<div><span></span></div>
19" RAYS® super-lightweight forged alloy wheels	<div><span></span></div>
245/40WR19 and 275/35WR19 Bridgestone® Potenza® high-performance tires	<div><span></span></div>
Front chin aero deflector (Coupe only)	<div><span></span></div>
Body-colour rear spoiler (Coupe only)	<div><span></span></div>

<span><span><span></span></span><span> </span></span> <b>Navigation Package</b>	
Nissan Hard Drive Navigation System with 178 mm (7") VGA touch-screen	<div><span></span></div>
monitor and voice recognition	<div><span></span></div>
RearView Monitor	<div><span></span></div>
USB connection port for iPod® interface and other compatible devices	<div><span></span></div>
Streaming audio via Bluetooth® wireless technology	<div><span></span></div>
Auxiliary audio/video input jacks (this feature replaces auxiliary audio input jack	<div><span></span></div>
on head unit)	<div><span></span></div>
This package requires Sport Package. This package deletes the in-dash 6-CD changer.	<div><span></span></div>

## DIMENSIONS/CAPACITIES

Exterior Dimensions – mm (inches)	
Wheelbase	2550 (100.4)
Overall length	4246 (167.2)
Overall width	1845 (72.6)
Overall height	1315 (51.8); up to 1326 (52.2) on Roadster
Track width (front/rear)	<div><span></span></div>
18" Aluminum-alloy wheels	1550 (61.0)/1595 (62.8)
19" RAYS® forged wheels	1540 (60.6)/1565 (61.6)

Interior Dimensions – mm (inches)	
Head room	971 (38.2); 983 (38.7) on Roadster
Leg room	1090 (42.9)
Hip room	1388 (54.6)
Shoulder room	1383 (54.4)

Capacities	
Interior volume – L (cu. ft.)	1461 (51.6); 1481 (52.3) on Roadster
Cargo volume – L (cu. ft.)	195 (6.9); 119 (4.2) on Roadster
Fuel tank – L (Imp gals.)	71.9 (19.0)
Engine oil – litres	4.9 maximum

Aerodynamics	
Comprehensive underbody airflow management	<div><span></span></div>
Front: Zero lift	<div><span></span></div>
Rear: Zero-lift on Coupe with Sport Package	<div><span></span></div>
Drag coefficient (Cd): .30 on Coupe; .29 on Coupe with Sport Package	<div><span></span></div>
Drag coefficient (Cd): .33 on Roadster; .34 on Roadster with Sport Package	<div><span></span></div>

Curb Weights – kg (lbs.)	
Weight distribution	54/46
Weight distribution (with passengers)	53/47
<b>Coupe</b>	
Manual transmission	1489 (3283)
Automatic transmission	1510 (3329)
<b>Roadster</b>	
Manual transmission	1578 (3479)
Automatic transmission	1588 (3501)

2012 Fuel Consumption Estimates – City/Hwy		
	<b>COUPE</b>	<b>ROADSTER</b>
Manual transmission	11.8 (24)/7.9 (36)	11.9 (24)/8.1 (35)
Automatic transmission	11.1 (25)/7.5 (38)	11.7 (24)/8.0 (35)
<p><span><span></span></span> Actual mileage may vary with driving conditions – use for comparison only.</p>		

<sup>[1]</sup> Premium fuel required. ^Coupe only. ^Roadster only. ^XM® Satellite Radio is available in the 10 Canadian provinces and the 48 contiguous United States. Basic monthly subscription required and sold separately after trial period. Subscription subject to terms and conditions at xmradio.ca. All fees and programming subject to change. © 2011 XM Satellite Radio Inc. The XM name and related logos are registered trademarks of XM Satellite Radio Inc. All other trademarks are the property of their respective owners. ®Bose is a registered trademark of The Bose Corporation. ®HomeLink is a registered trademark of Johnson Controls Technology Company. ®The Bluetooth word mark and logo are owned by Bluetooth SIG, Inc., and any use of such marks by Nissan is under licence. ®Bridgestone and Potenza are registered trademarks of Bridgestone Corporation. ®RAYS is a registered trademark of RAYS Engineering. ®iPod is a registered trademark of Apple, Inc. All rights reserved. iPod not included. ®Yokohama and ADVAN Sport are registered trademarks of The Yokohama Rubber Company, Ltd.

## TRIM LEVELS

### 370Z™ Touring (Coupe and Roadster)

- 332 HP, 270 lb-ft of torque, 3.7-litre V6 ▪ 6-speed manual transmission
- 18" Aluminum-alloy wheels ▪ High-performance W-rated tires ▪ High Intensity Discharge (HID) bi-functional xenon headlights ▪ Illuminated Z® side marker emblems ▪ Nissan Intelligent Key® with Push Button Ignition
- Leather-appointed power heated seats with synthetic suede inserts (Coupe) ▪ Ventilated leather-appointed power heated, and cooling seats (Roadster) ▪ Driver's adjustable lumbar support ▪ Digital Bose® audio system ▪ XM® Satellite Radio ▪ Bluetooth® Hands-Free Phone System
- Aluminum-trimmed pedals ▪ Auto-dimming rearview mirror ▪ HomeLink® universal garage-door opener



## ACCESSORIZE.

Every Genuine Nissan Accessory is:

- Custom-fit, custom-designed and durability-tested.
- Backed by Nissan's 3 year/60,000 km Accessories limited warranty.<sup>2</sup>
- Easy to finance with vehicle purchase, for just a few dollars a month.

See your Nissan dealer for details, or go to [accessories.nissan.ca](http://accessories.nissan.ca)

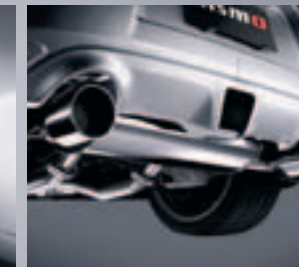
NISMO Aero Package



19" Polished Forged Alloy Wheels



NISMO Sport Exhaust System



## PAINT AND FABRIC SELECTIONS



<b>Prussian Blue<sup>1</sup> RAE</b>	370Z™ Coupe	370Z™ Roadster
Frost Leather		<input type="checkbox"/>
Charcoal Leather	<input type="checkbox"/>	<input type="checkbox"/>



<b>Solid Red A54</b>	370Z™ Coupe	370Z™ Roadster
Charcoal Leather	<input type="checkbox"/>	<input type="checkbox"/>



<b>Hakone White<sup>1</sup> QAB</b>	370Z™ Coupe	370Z™ Roadster
Frost Leather	<input type="checkbox"/>	<input type="checkbox"/>
Wine Leather		<input type="checkbox"/>



<b>Magnetic Black<sup>1</sup> G41</b>	370Z™ Coupe	370Z™ Roadster
Frost Leather		<input type="checkbox"/>
Charcoal Leather	<input type="checkbox"/>	<input type="checkbox"/>
Persimmon Leather	<input type="checkbox"/>	



<b>Black Rose<sup>1</sup> NAG</b>	370Z™ Coupe	370Z™ Roadster
Frost Leather	<input type="checkbox"/>	<input type="checkbox"/>
Charcoal Leather	<input type="checkbox"/>	<input type="checkbox"/>
Wine Leather		<input type="checkbox"/>



<b>Gun Metallic<sup>1</sup> KAD</b>	370Z™ Coupe	370Z™ Roadster
Charcoal Leather	<input type="checkbox"/>	<input type="checkbox"/>
Persimmon Leather	<input type="checkbox"/>	
Wine Leather		<input type="checkbox"/>



<b>Airstream<sup>1</sup> K23</b>	370Z™ Coupe	370Z™ Roadster
Charcoal Leather	<input type="checkbox"/>	<input type="checkbox"/>
Wine Leather		<input type="checkbox"/>

## ROADSTER SOFT-TOP SELECTIONS



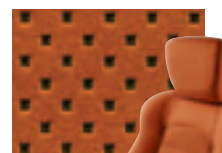
**Black Top** available with Frost Leather or Charcoal Leather



**Bordeaux Top** available with Wine Leather

### Leather (Coupe)

Persimmon



Charcoal



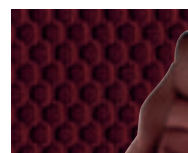
Frost



■ Standard    <sup>1</sup> Extra cost option

### Leather (Roadster)

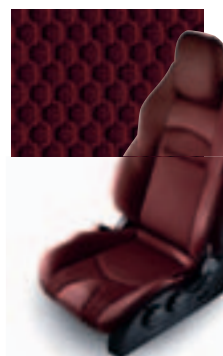
Wine



Charcoal



Frost



Nissan has taken care to ensure that the colour swatches presented here are the closest possible representations of actual vehicle colours. Swatches may vary slightly due to the printing process and whether viewed in daylight, fluorescent or incandescent light. Please see your local Nissan Dealership for actual colours and pricing information.

## COMMITMENT.

Buying and owning a Nissan is like driving one: quick, convenient, confidence-inspiring.



Continue your excitement at [nissan.ca](http://nissan.ca) You'll find virtual product demonstrations, a way to "build your own Nissan," a dealer locator, and more information about key Nissan support and services.



Choose your model

Select colours

Request a quote

**Finance Options** Through Nissan Canada Finance, we offer many attractive purchase and lease programs, all with competitive rates and terms. With our flexible finance options, driving home a new Nissan has never been easier. Consult your local Nissan Dealership for complete details.

**No-Nonsense Warranty** Every 2012 Nissan is covered by a 3 year/60,000 km<sup>3</sup> Comprehensive New Vehicle Warranty, a 5 year/100,000 km<sup>3</sup> Powertrain Warranty, an 8 year/130,000 km<sup>3</sup> Emission Control Warranty on selected components, and a 5 year/unlimited km Corrosion Perforation Warranty. As a Nissan owner, you'll also receive a 3 year Roadside Assistance program available to you 24 hours a day. Terms, conditions and exclusions apply. See Warranty Information Booklet for complete details.

**Added Security Plan (ASP)** For ultimate peace of mind, consider the Nissan Added Security Plan. It's our commitment to be there for you, and to help you leave your worries behind. Different plans, available for both purchased and leased vehicles, let you tailor the coverage to your driving habits.

Nissan's philosophy toward the environment, "Seeking a symbiosis of people, vehicles and nature," describes our ideal for a sustainable mobile society, now and in the future. We launched the Nissan Green Program with specific objectives to realize this goal, and we are pursuing it energetically.



NISSAN  
GREEN PROGRAM

<sup>2</sup>See your Nissan Dealership and read the actual limited warranty. <sup>3</sup>Whichever comes first. <sup>4</sup>The Bluetooth word mark and logos are owned by Bluetooth SIG, Inc., and any use of such marks by Nissan is under licence. <sup>5</sup>Bose is a registered trademark of The Bose Corporation. <sup>6</sup>HomeLink is a registered trademark of Johnson Controls Technology Company. <sup>7</sup>XM is a registered trademark of XM Radio Inc.



## INNOVATION THAT'S LEGENDARY. INNOVATION FOR ALL. NISSAN 370Z™ COUPE AND 370Z™ ROADSTER

At Nissan, innovation is at the core of everything we do. It's about turning our ideas and dreams into something that makes a difference in your life, every time you get behind the wheel. So imagine driving a 370Z,<sup>1</sup> with all of this at your command:

**SynchroRev Match.**<sup>™</sup> The world's first rev-matching manual transmission puts a seamless downshift in the palm of your hand every time – helping to keep the chassis balanced in enthusiastic driving!

**Variable Valve Event and Lift (VVEL) technology,** for quicker response and a broader torque curve. 332 horsepower has never been more exhilarating.

**Lightweight aluminum suspension components** and super-light forged alloy wheels give you quick response and impressive grip while helping provide a smooth, controlled ride.

**Integrated gauge pod.** The main instrument cluster adjusts with the steering column, so you always have a clear view of the gauges.



SHIFT\_the way you move

visit [www.nissan.ca](http://www.nissan.ca)

<sup>1</sup>See Specifications section for availability.

All illustrations, photographs and specifications in this brochure are based on the latest product information. See actual vehicle for complete accuracy. Nissan Canada Inc. reserves the right to make changes at any time, without notice, in prices, colours, materials, equipment, specifications and models, and to discontinue models or equipment. For information on additional options and accessories, contact your Nissan Dealership. Registered trademarks are property of their respective owners.

At [nissan.ca](http://nissan.ca), you'll find virtual product demonstrations, a way to "build your own Nissan," a dealer locator, and more information about key Nissan support services. The Nissan names, logos, product names, feature names, and slogans are trademarks owned by or licenced to Nissan Motor Co. Ltd. and/or its North American subsidiaries. **Always wear your seat belt, and please don't drink and drive.** Printed in October 2011. Catalogue number: 99999-37Z12EN. © 2011 Nissan Canada Inc. All rights reserved.