



Innovation  
that excites

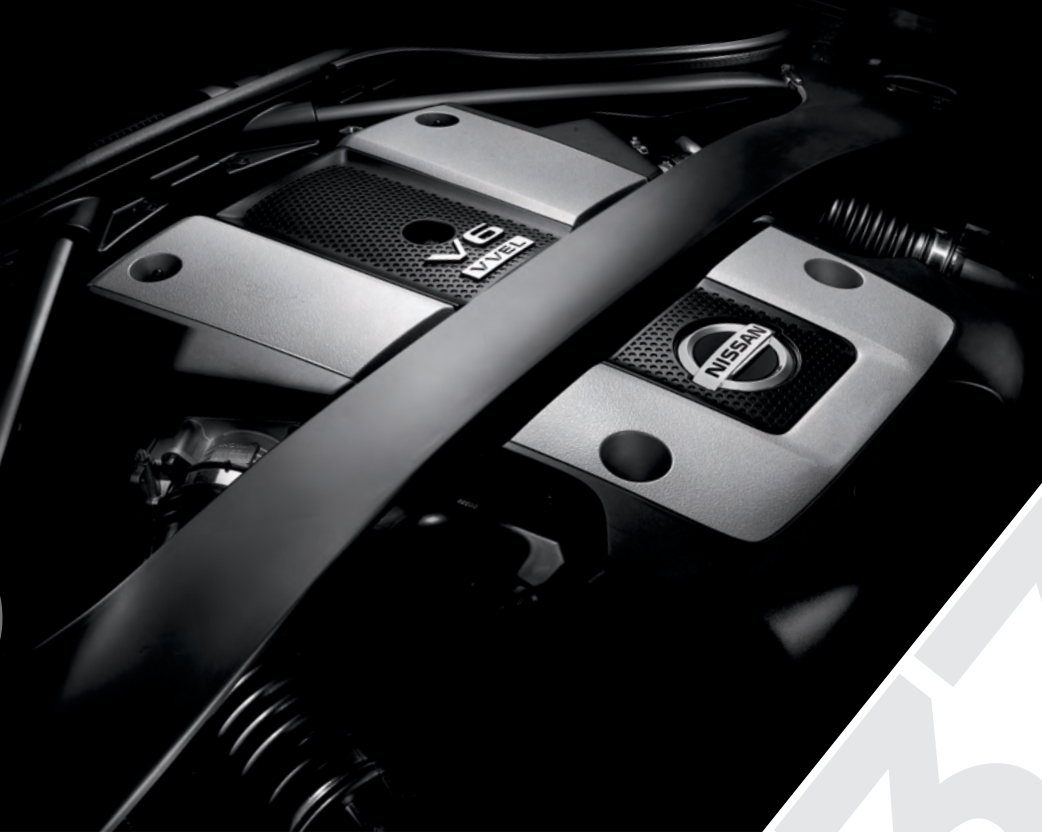
2019  
**370Z<sup>®</sup> COUPE  
AND ROADSTER**



**Exhilarate every moment. From the battle cry of a legendary 332 HP VQ V6 to the world's-first rev-matching manual transmission! The relentless cornering grip of a dynamically balanced chassis talking to you through a driver-focused cockpit. Savour the feeling that only the legendary Z<sup>®</sup> can bring to your drive.**



**3.7**  
LITRE  
**V6**  
**332**  
HP  
**270**  
LB.-FT.  
**TORQUE**



**THE 2019 370Z® HERITAGE EDITION**  
**IT'S NEVER BEEN**  
**GOOD AT BLENDING IN**

Celebrating nearly 50 years of rewriting the rules of style, performance and value, the 370Z Heritage Edition is inspired by the 1977 280Z with Special Decor Package. It features unique graphics, and a special interior as vibrant as the Z itself.



**A PERFECT BALANCE OF**  
**CONFIDENCE AND CONTROL**

Designed to conquer corners, the Nissan 370Z starts with a low centre of gravity and a short wheelbase for quick response. Bring it all together with an enthusiast's wish list of high-performance componentry, and you'll find pure joy as the 370Z elevates handling science into pure performance art.



**THE DRIVER,**  
**FIRST AND FOREMOST**

The main instrument cluster moves with the steering column, so the wheel won't obstruct your view. A driver's seat with special cutaways that give arms and legs room to move. From the moment you get in, you can tell – the Z® interior has been custom-tailored to give you the drive of your life.



**THE DOWNSHIFT,**  
**PERFECTED**

Included on the Coupe Sport and NISMO® models, SynchroRev Match® technology<sup>2</sup> – the first in any production car – blips the throttle to the ideal engine rpm for a supremely smooth downshift. For reduced pedal effort and enhanced precision and control, every Z with a manual transmission features an EXEDY® high-performance clutch.



**EXEDY**

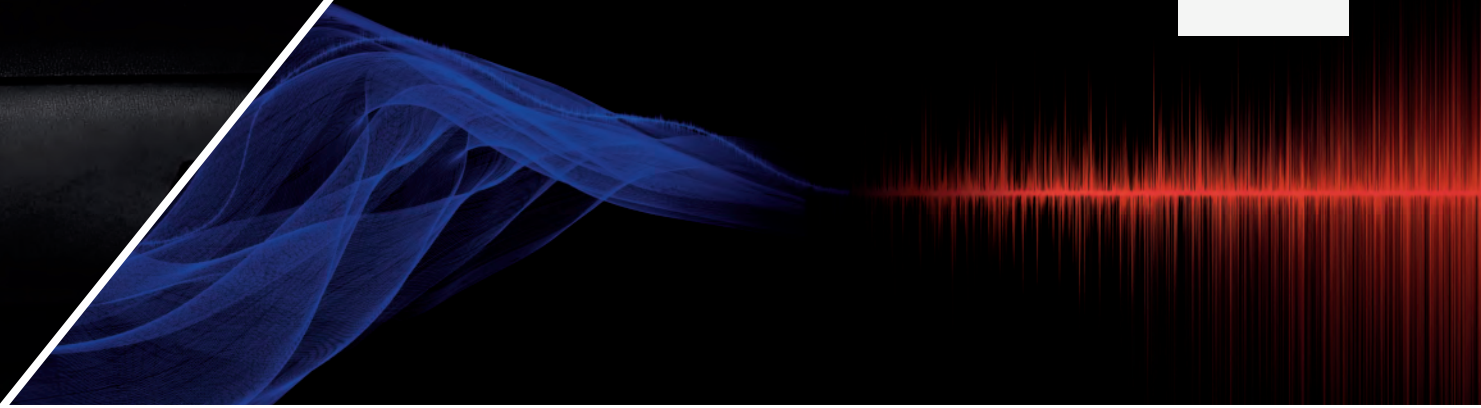
U.S. instrumentation shown.



Nissan 370Z® Touring Sport Coupe shown in Black Leather. U.S. instrumentation shown.

## HOW WE ROCK

**Bose® Premium Audio System.** For the same rush from your favourite music as the Z's throaty exhaust, the available Bose® Premium Audio System was custom-engineered for the unique shape of the 370Z's interior. With 8 speakers, including two subwoofers, turn it on, turn it up, and get ready to rock.



## EVEN THE TECHNOLOGY IS DESIGNED TO PERFORM

The 370Z® keeps a strong connection to your world as well as the road. For 2019, 370Z models feature a RearView Monitor integrated into the rearview mirror.<sup>3</sup> Models equipped with the Nissan Navigation System feature a rearview display on the touch-screen.<sup>4</sup> With the Bose® Premium Audio System,<sup>1</sup> you've got an amazing choice of entertainment to create a soundtrack for your drive. And along with the touch-screen, voice-activated Nissan Navigation System,<sup>1</sup> you've got so much more than just directions.<sup>1,4</sup>

• Nissan Navigation System with NavTraffic<sup>1,4,5</sup>

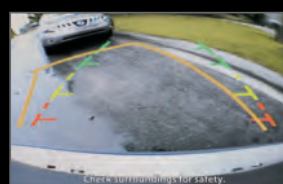
• RearView Monitor<sup>3</sup>

• Active Noise Cancellation and Active Sound Enhancement<sup>1,6</sup>

• USB Input<sup>7</sup>

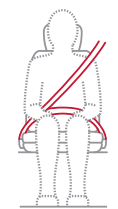
• SiriusXM® Satellite Radio<sup>1,5</sup>

• Bluetooth® Streaming Audio<sup>1,8</sup>



## EVEN WHEN REALITY BITES

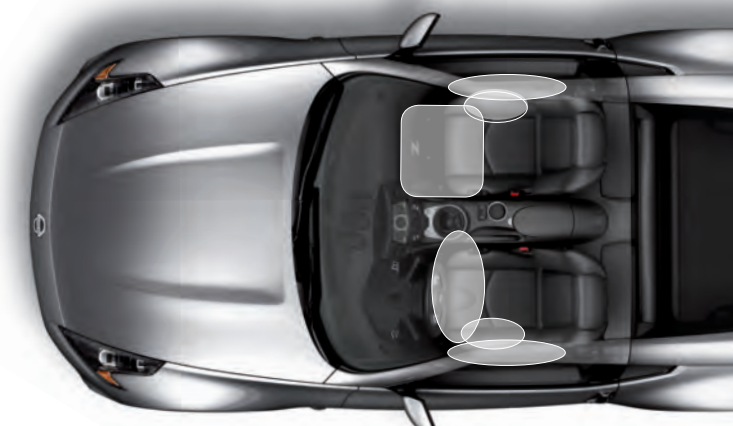
**High-performance protection.** The Nissan Advanced Airbag System includes dual-stage supplemental front airbags equipped with seat belt sensors and an occupant-classification sensor. These dual-stage airbags adjust their inflation rate, depending on the severity of impact and seat belt use. If the passenger seat is empty, a sensor actually deactivates that airbag.<sup>9</sup>



Seat belt technologies utilize pre-tensioners to help tighten the belt when front airbags deploy. And if your body puts too much force on the belt, load limiters give a bit.



Active Head Restraints help reduce the chance of whiplash injuries by moving up and forward toward your head during certain rear-end collisions.<sup>10</sup>



U.S. model shown.



**370Z® ROADSTER**

## **OPEN TO THE POSSIBILITIES**

Expanding the definition of “convertible weather.” The 370Z Roadster is designed to let you enjoy top-down driving longer – whether it’s just later in the day, or later in the season.<sup>11</sup> Standard heated and cooled seats help keep you comfortable even when there’s a chill in the air. Aerodynamic design helps minimize air buffeting in and around the cabin, for a quieter ride. And when it’s time to put up the top, a double-insulated roof helps keep the cabin warmer on cool days, and reduces interior noise, making this one roadster you’ll want to enjoy year-round.



**nismo**<sup>®</sup>

What happens when the fanatical engineers at NISMO are let loose on the 370Z<sup>®</sup>? You get 350 horsepower surrounded by a NISMO-tuned suspension and a driver-focused interior, all wrapped in a jaw-dropping NISMO-designed aerodynamic body. Obsessive? Perhaps. Extraordinary? Most definitely.

# 350 HP



**Competition-tuned handling. Competition-inspired design.** Serious grip starts with specially tuned springs, shocks, and stabilizer bars designed to satisfy the most demanding enthusiast. Extra braces on the front strut tower bar and special vibration dampers on the front body frame rail and rear subframe are added for impressive overall body rigidity and the feel of a controlled ride. A true work of performance art, the 370Z NISMO entices the eye with its 19" RAYS<sup>®</sup> forged alloy wheels, high-downforce body, aggressive front and rear fascia, and rear diffuser.

Professional driver. Closed course. Obey all traffic laws, always drive safely and wear your seat belt. Damage resulting from racing, competitive driving, track and/or airstrip use not covered by warranty. See your New Vehicle Limited Warranty and Owner's Manual for proper vehicle operation and complete warranty details.

H-PIPE FREE-FLOW DUAL EXHAUST

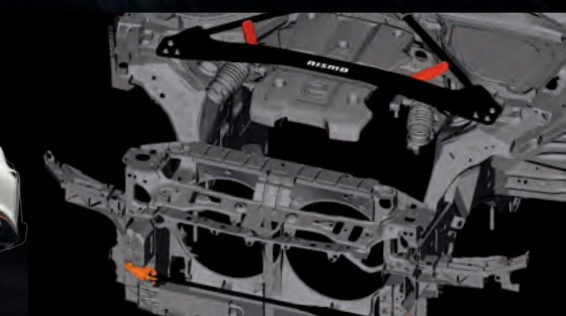
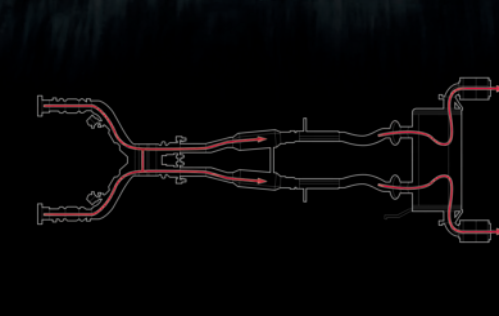
AERODYNAMICS AND DOWNFORCE

CHASSIS ENHANCEMENTS

WHEELS BY RAYS<sup>®12</sup>

TUNED SUSPENSION AND BRAKES

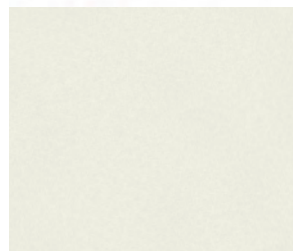
SIGNATURE INTERIOR



## PAINT AND FABRIC

■ Standard  
□ Optional

Nissan has taken care to ensure that the colour swatches presented here are the closest possible representations of actual vehicle colours. Swatches may vary slightly due to the printing process and whether viewed in daylight, fluorescent or incandescent light. Please see the actual colours at your local Nissan dealer.



Pearl White<sup>13</sup> QAB



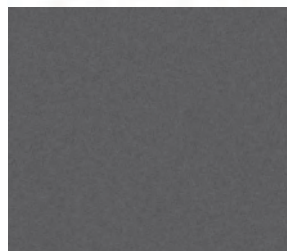
Chicane Yellow<sup>13</sup> EAC



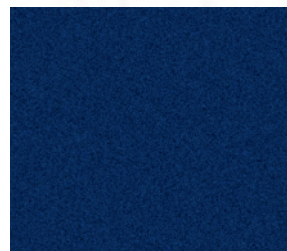
Passion Red<sup>13</sup> NBA



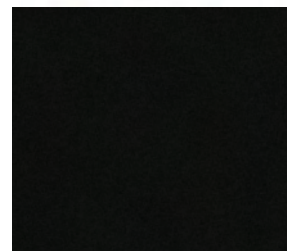
Solid Red A54



Gun Metallic<sup>13</sup> KAD



Deep Blue Pearl<sup>13</sup> RAY



Magnetic Black<sup>13</sup> G41

	370Z <sup>8</sup>	SPORT	TOUR	NISMO <sup>9</sup>	370Z	SPORT	TOUR	NISMO
BLACK CLOTH <sup>6</sup>	■	■			■	■		
BLACK CLOTH WITH YELLOW TRIM <sup>6</sup>					□			
FROST LEATHER <sup>14</sup>			■					
BLACK LEATHER			■ <sup>6</sup>				■	
PERSIMMON LEATHER <sup>6</sup>								
WINE LEATHER <sup>14</sup>			■					
NISMO BLACK LEATHER/ RED ALCANTARA <sup>®</sup> INSERTS				■				

	370Z	SPORT	TOUR	NISMO	370Z	SPORT	TOUR	NISMO	370Z	SPORT	TOUR	NISMO	370Z	SPORT	TOUR	NISMO	370Z	SPORT	TOUR	NISMO
Passion Red	■	■			■	■			■	■			■	■			■	■		
Solid Red																				
Gun Metallic																				
Deep Blue Pearl																				
Magnetic Black																				



Black Cloth | Coupe



Black Cloth with Yellow Trim | Heritage Edition



Black Leather | Coupe



Persimmon Leather | Coupe



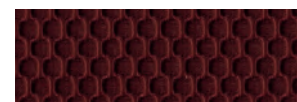
Black Leather/Red Alcantara<sup>®</sup> Inserts | NISMO



Black Leather | Roadster



Frost Leather | Roadster



Wine Leather | Roadster



Black Top available with Frost Leather or Black Leather



Bordeaux Top available with Wine Leather only

## GENUINE NISSAN ACCESSORIES

Every Genuine Nissan Accessory is: custom-fit, custom-designed and durability-tested; available for finance and backed by Nissan's 3 year/60,000 km Accessories limited warranty when installed by dealer at time of your vehicle purchase.<sup>15</sup>

### A. Front Chin Aero Deflector

Less turbulence. More downforce. Looks cool, too.

### Additional Accessories:

- Carpeted Trunk Mat
- Splash Guards
- Illuminated Ash Cup
- Licence Plate Frame
- Valve Stem Caps
- And More

### B. Rear Decklid Spoiler (Coupe Only)

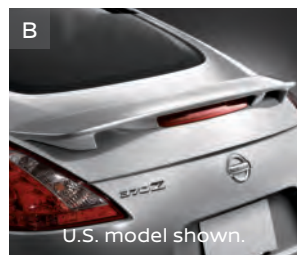
To the winner go the spoilers.

### C. Illuminated Kick Plates

Let your door sills play dress-up.

### D. Portable Cargo Organizer<sup>16</sup>

A tidy cargo area is a happy cargo area.



U.S. model shown.



## BUYING AND OWNING

**Finance Options** Through Nissan Canada Finance, we offer many attractive lease and loan options that can be tailored to your individual needs. We have unique programs such as the Nissan Grad Program, Loyalty Program or the Nissan Advantage Program. Please visit our website [Nissan.ca/finance](http://Nissan.ca/finance) to explore all of the options available. We have also made it easy to pre-qualify online. All of our programs come with competitive rates and terms. With our flexible options, driving home a new Nissan has never been easier. Consult your local Nissan Dealership for complete details.

**No-Nonsense Warranty** Every 2019 Nissan is covered by a 3 year/60,000 km<sup>17</sup> Comprehensive New Vehicle Warranty, a 5 year/120,000 km<sup>17</sup> Powertrain Warranty, an 8 year/130,000 km<sup>17</sup> Emission Control Warranty on selected components, and a 5 year/unlimited km Corrosion Perforation Warranty. As a Nissan owner, you'll also receive a 3 year Roadside Assistance program available to you 24 hours a day. Terms, conditions and exclusions apply. See your Warranty Information Booklet for complete details.

**Added Security Plan (ASP)** For ultimate peace of mind, consider the Nissan Added Security Plan. It's our commitment to be there for you, and to help you leave your worries behind. Different plans, available for both purchased and leased vehicles, let you tailor the coverage to your driving habits.

**Security+Plus™ Prepaid Maintenance Plan** The smart choice when it comes to maintaining your new Nissan. Honoured at all participating Nissan Dealers in Canada and the U.S., your vehicle is cared for by factory-trained technicians using Genuine Nissan Parts. And best of all, there's no worrying about price increases on parts or service in the future. A variety of plans are available. Ask your Dealer for details.



See your Nissan dealer for details, or go to [accessories.nissan.ca](http://accessories.nissan.ca)

## CHOOSE YOUR TRIM LEVEL

### COUPE

#### 370Z®

- 332 HP, 270 lb.-ft. of torque
- 3.7-litre V6, twin-intake system
- 6-speed manual transmission
- EXEDY® high-performance clutch
- Sport-tuned shock absorbers
- 3-point front strut tower brace
- 18" Black-finish aluminum-alloy wheels
- Yokohama® ADVAN Sport® high-performance W-rated tires
- High Intensity Discharge (HID) bi-functional xenon headlights with smoked housing
- LED Daytime Running Lights
- Smoked LED taillights
- Z® fender emblems
- Smoked chrome door handles
- Auto-dimming rearview mirror
- RearView Monitor<sup>3</sup>
- Bluetooth® Hands Free Phone System<sup>8</sup>
- Nissan Intelligent Key® with Push Button Ignition
- Upshift indicator light (manual transmission only)
- Interior trunk release switch
- 8-way adjustable driver's seat
- 4-way adjustable passenger's bucket seat
- Driver and passenger knee support
- Cloth seat trim
- AM/FM/CD audio system with six speakers
- USB port<sup>7</sup>
- Six standard airbags<sup>9</sup>



#### SPORT

INCLUDES 370Z EQUIPMENT PLUS:

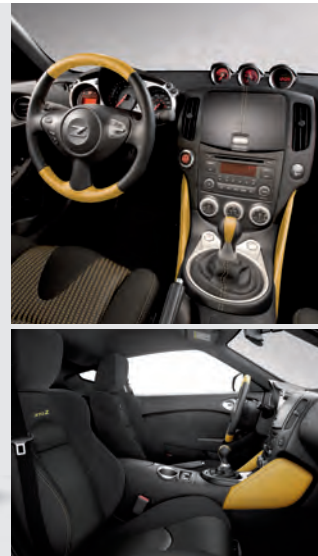
- Optional 7-speed automatic transmission with manual shift mode and Downshift Rev Matching
- Paddle shifters (automatic transmission only)
- SynchroRev Match® (manual transmission only)
- Nissan sport brakes - 14.0" 4-piston front brakes/13.8" 2-piston rear brakes with red brake calipers
- Viscous Limited-slip Rear Differential
- 19" RAYS® forged alloy wheels
- Bridgestone® Potenza® S007 high-performance W-rated tires
- Front chin aero deflector
- Body-colour rear spoiler
- Heated outside mirrors
- LED illuminated Z side marker emblems
- Bose® Premium Audio System with eight speakers, including two subwoofers
- Active Noise Cancellation
- Active Sound Enhancement



#### 370Z HERITAGE EDITION

INCLUDES 370Z EQUIPMENT PLUS:

- Heritage Edition exterior graphics
- Gloss black outside mirrors
- Yellow interior trim details
- Cloth seat with contrast yellow trim and bolster stitching
- Leather-wrapped steering wheel and shift knob with yellow trim



#### TOURING SPORT

INCLUDES SPORT EQUIPMENT PLUS:

- Nissan Navigation System with touch-screen monitor and Voice Recognition<sup>4</sup>
- NavTraffic and NavWeather provided by SiriusXM<sup>5</sup>
- HomeLink® universal garage-door opener
- Rear cargo cover
- Driver's manual adjustable lumbar support
- Leather-appointed, power heated sport seats with synthetic suede inserts
- Aluminum-trimmed pedals
- Bluetooth® streaming audio<sup>8</sup>
- SiriusXM® Satellite Radio<sup>5</sup>



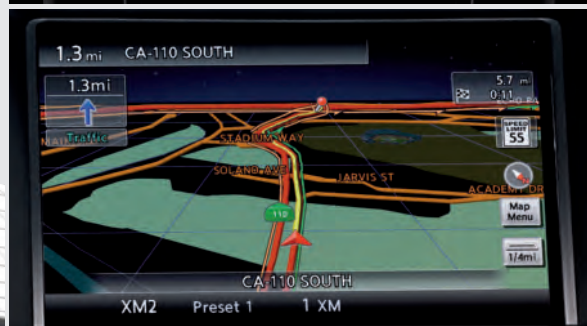
U.S. instrumentation shown.

## CHOOSE YOUR TRIM LEVEL

### NISMO®

#### NISMO INCLUDES 370Z® EQUIPMENT PLUS:

- 350 HP, 276 lb.-ft. of torque, 3.7-litre V6
- NISMO-tuned free-flow dual exhaust with H-pipe configuration
- 6-speed manual transmission with SynchroRev Match®
- Viscous Limited-slip Rear Differential
- Nissan sport brakes – 14.0" 4-piston front brakes/13.8" 2-piston rear brakes with red brake calipers
- High-rigidity brake hoses and GT-R® Special II brake fluid
- NISMO-tuned suspension with increased spring, dampening, and stabilizer rates
- NISMO-reinforced 3-point front strut tower brace
- NISMO front and rear performance body dampers
- 19" NISMO forged alloy wheels by RAYS®
- Dunlop® SP Sport Maxx® GT600 high-performance Y-rated tires<sup>12</sup>
- NISMO aerodynamic body design – front and rear fascia, spoiler side sills, and rear spoiler
- Nissan Navigation System with touch-screen monitor and Voice Recognition<sup>4</sup>
- NavTraffic and NavWeather provided by SiriusXM<sup>®5</sup>
- HomeLink® universal garage-door opener
- NISMO tachometer
- NISMO Recaro® leather-appointed seats with Alcantara® inserts
- NISMO Alcantara®/leather-wrapped steering wheel and smooth leather-wrapped shift knob
- NISMO signature red interior stitching
- Bose® Premium Audio System with eight speakers, including two subwoofers
- Bluetooth® streaming audio<sup>8</sup>
- SiriusXM® Satellite Radio<sup>5</sup>
- Active Noise Cancellation
- Active Sound Enhancement

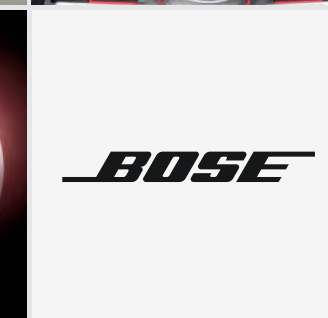
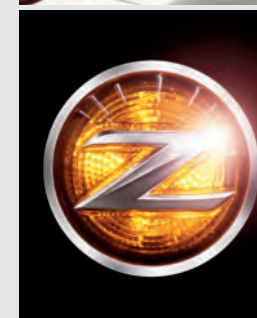
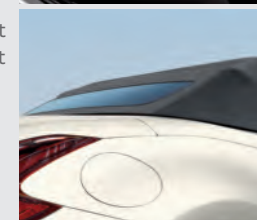


Nissan 370Z® NISMO® shown in Pearl White.

### ROADSTER

#### TOURING

- 332 HP, 270 lb.-ft. of torque
- 3.7-litre V6, twin-intake system
- 6-speed manual transmission
- EXEDY® high-performance clutch
- Viscous Limited-slip Rear Differential
- Upshift indicator light
- Sport-tuned shock absorbers
- 3-point front strut tower brace
- 18" Black-finish aluminum-alloy wheels
- Bridgestone® Potenza® RE050A high-performance W-rated tires
- High Intensity Discharge (HID) bi-functional xenon headlights with smoked housing
- LED Daytime Running Lights
- Smoked LED taillights
- LED illuminated Z® side marker emblems
- Smoked chrome door handles
- Power convertible soft-top with glass window
- Nissan Navigation System with touch-screen monitor and Voice Recognition<sup>4</sup>
- NavTraffic and NavWeather provided by SiriusXM<sup>®5</sup>
- RearView Monitor<sup>3</sup>
- HomeLink® universal garage-door opener
- Auto-dimming rearview mirror
- Bluetooth® Hands Free Phone System<sup>8</sup>
- Nissan Intelligent Key® with Push Button Ignition
- 8-way adjustable driver's seat
- Driver's manual adjustable lumbar support
- 4-way adjustable passenger's bucket seat
- Driver and passenger knee support
- Ventilated, leather-appointed seats
- Climate-controlled seats (heated and cooled)
- Aluminum-trimmed pedals
- Bose® Premium Audio System with eight speakers, including two subwoofers
- Bluetooth® streaming audio<sup>8</sup>
- SiriusXM® Satellite Radio<sup>5</sup>
- USB port<sup>7</sup>
- Six standard airbags<sup>9</sup>



#### TOURING SPORT INCLUDES 370Z TOURING EQUIPMENT PLUS:

- Optional 7-speed automatic transmission with manual shift mode and Downshift Rev Matching
- Paddle shifters (automatic transmission only)
- SynchroRev Match® (manual transmission only)
- Nissan sport brakes – 14.0" 4-piston front brakes/13.8" 2-piston rear brakes with red brake calipers
- 19" RAYS® forged alloy wheels
- Bridgestone® Potenza® S007 high-performance W-rated tires



## SPECIFICATIONS

Engine	370Z <sup>a</sup> Coupe	Sport Coupe	370Z Touring <sup>™</sup>	Touring Sport	NISMO <sup>a</sup>
3.7-litre DOHC 24-valve V6 engine <sup>18</sup>	■	■	■	■	■
—Horsepower – 332 HP @ 7000 rpm	■	■	■	■	
—Horsepower – 350 HP @ 7400 rpm					■
—Torque – 270 lb.-ft. @ 5200 rpm	■	■	■	■	
—Torque – 276 lb.-ft. @ 5200 rpm					■
—Bore and stroke – 95.5 x 86.0	■	■	■	■	■
—Compression ratio – 11.1:1	■	■	■	■	■
—Maximum engine speed – 7500 rpm	■	■	■	■	■
Continuously Variable Valve Timing Control System (CVTCS) with Variable Valve Event and Lift (VVEL) on intake valves	■	■	■	■	■
Twin-intake system	■	■	■	■	■
Nissan Direct Ignition System with iridium-tipped spark plugs	■	■	■	■	■
Electronic drive-by-wire throttle	■	■	■	■	■
Engine block heater					
NISMO-tuned free-flow dual exhaust with H-pipe configuration					■

Drivetrain	370Z <sup>a</sup> Coupe	Sport Coupe	370Z Touring <sup>™</sup>	Touring Sport	NISMO <sup>a</sup>
Longitudinally mid-mounted front engine/Rear-Wheel Drive	■	■	■	■	■
Carbon-fibre composite driveshaft	■	■	■	■	■
6-speed close-ratio manual transmission	■	■	■	■	■
SynchroRev Match <sup>®2</sup>		■	■	■	■
7-speed automatic transmission with manual shift mode, paddle shifters and Downshift Rev Matching		□		□	
EXEDY <sup>®</sup> high-performance clutch <sup>2</sup>	■	■	■	■	■
Viscous limited-slip rear differential		■	■	■	■

Brakes	370Z <sup>a</sup> Coupe	Sport Coupe	370Z Touring <sup>™</sup>	Touring Sport	NISMO <sup>a</sup>
12.6" x 1.10" vented front discs and 12.1" x 0.63" vented rear discs	■		■		
Nissan sport brakes – 4-piston opposed aluminum front calipers with 14.0" x 1.30" vented discs and 2-piston opposed aluminum rear calipers with 13.8" x 0.80" vented discs		■		■	■
High-rigidity brake hoses and GT-R <sup>®</sup> Special II brake fluid					■
4-wheel Anti-lock Braking System (ABS)	■	■	■	■	■
Electronic Brake force Distribution (EBD)	■	■	■	■	■
Brake Assist <sup>19</sup>	■	■	■	■	■

Suspension/Chassis Bracing/Steering	370Z <sup>a</sup> Coupe	Sport Coupe	370Z Touring <sup>™</sup>	Touring Sport	NISMO <sup>a</sup>
2-link double-wishbone aluminum-alloy front suspension with aluminum subframe	■	■	■	■	■
4-link aluminum-alloy rear suspension	■	■	■	■	■
Front and rear stabilizer bars	■	■	■	■	■
Sport-tuned shock absorbers					■
NISMO-tuned suspension with increased spring, dampening, and stabilizer rates					■
3-point front strut tower brace	■	■	■	■	
NISMO reinforced 3-point front strut tower brace					■
Rear underbody V-brace	■	■	■	■	■
NISMO front and rear performance chassis dampers					■
Vehicle-speed-sensitive power steering	■	■	■	■	■

Wheels/Tires	370Z <sup>a</sup> Coupe	Sport Coupe	370Z Touring <sup>™</sup>	Touring Sport	NISMO <sup>a</sup>
18" x 8.0" (front)/18" x 9.0" (rear) black-finish aluminum-alloy wheels	■		■		
19" x 9.0" (front)/19" x 10.0" (rear) RAYS <sup>®</sup> forged alloy wheels		■		■	

Wheels/Tires (continued)	370Z Coupe	Sport Coupe	370Z Touring <sup>™</sup>	Touring Sport	NISMO
19" x 9.5" (front)/19" x 10.5" (rear) NISMO forged alloy wheels by RAYS <sup>®</sup>					■
225/50WR18 (front) and 245/45WR18 (rear) Yokohama <sup>®</sup> ADVAN Sport <sup>™</sup> high-performance tires	■				
225/50WR18 (front) and 245/45WR18 (rear) Bridgestone <sup>®</sup> Potenza <sup>®</sup> RE050A high-performance tires			■		
245/40WR19 (front) and 275/35WR19 (rear) Bridgestone <sup>®</sup> Potenza <sup>®</sup> S007 high-performance tires		■		■	
245/40YR19 (front) and 285/35YR19 (rear) Dunlop <sup>®</sup> SP Sport Maxx <sup>®</sup> GT600 high-performance tires					■

Exterior Features	370Z Coupe	Sport Coupe	370Z Touring <sup>™</sup>	Touring Sport	NISMO
Automatic on/off headlights	■	■	■	■	■
High Intensity Discharge (HID) bi-functional xenon headlights with smoked housing	■	■	■	■	■
LED Daytime Running Lights	■	■	■	■	■
Smoked LED taillights	■	■	■	■	■
Z <sup>®</sup> fender emblems	■				
LED illuminated Z side marker emblems		■	■	■	■
Smoked chrome door handles	■		■	■	■
Front chin aero deflector <sup>6</sup>				■	
Body-colour rear spoiler <sup>6</sup>		■		■	
NISMO aerodynamic body design – front and rear fascia, spoiler side sills, and rear spoiler					■
Heritage Edition exterior graphics	H				
Aluminum hood, doors, and hatch	■	■	■	■	■
Gloss black outside mirrors	H				
Body-colour dual power outside mirrors	■	■	■	■	■
Body-colour dual power heated outside mirrors	■	■	■	■	■
UV-reducing solar glass	■	■	■	■	■
Rear window defroster	■	■	■	■	■
Power convertible soft-top with glass window <sup>14</sup>			■	■	

Comfort/Convenience	370Z Coupe	Sport Coupe	370Z Touring <sup>™</sup>	Touring Sport	NISMO
Nissan Navigation System with 178 mm (7.0") VGA touch-screen monitor and Voice Recognition <sup>4</sup>			■	■	■
NavTraffic provided by SiriusXM <sup>®5</sup>			■	■	■
RearView Monitor <sup>3</sup>	■	■	■	■	■
Nissan Intelligent Key <sup>®</sup> with Push Button Ignition	■	■	■	■	■
Nissan Intelligent Key-operated soft-top down <sup>14</sup>			■	■	
Automatic Temperature Control (ATC)	■	■	■	■	■
Bluetooth <sup>®</sup> Hands Free Phone System <sup>8</sup>	■	■	■	■	■
3-bay gauge cluster (oil temperature, voltmeter, and digital clock)	■	■	■	■	■
Fine Vision electroluminescent gauges with multi-function drive computer	■	■	■	■	■
Upshift indicator light <sup>2</sup>	■	■	■	■	■
NISMO tachometer					■
Power windows with one-touch auto-up/down feature	■	■	■	■	■
Remote windows down	■	■	■	■	■
HomeLink <sup>®</sup> universal garage-door opener	■	■	■	■	■
12-volt DC power outlets (two) and map lights	■	■	■	■	■
Tilt steering column with integrated gauges	■	■	■	■	■
Variable intermittent windshield wipers	■	■	■	■	■
Auto-dimming rearview mirror	■	■	■	■	■
Interior trunk release switch	■	■		■ <sup>6</sup>	■
Dash-mounted storage	■	■			
Parcel shelves (behind seats)	■	■	■	■	■
Parcel box (behind passenger seat)	■	■	■	■	■
Rear cargo cover <sup>16</sup>				■ <sup>6</sup>	■

Seating/Appointments	370Z Coupe	Sport Coupe	370Z Touring <sup>™</sup>	Touring Sport	NISMO
8-way adjustable driver's seat	■	■	■	■	■
Driver's adjustable lumbar support			■	■	
4-way adjustable passenger's bucket seat	■	■	■	■	■
4-way power seats			■	■	
Heated seats <sup>6</sup>			■	■	
Climate-controlled seats (heated and cooled) <sup>14</sup>			■	■	
Driver and passenger knee support	■	■	■	■	■
Cloth seat trim	■	■			
Cloth seats with contrast yellow trim and bolster stitching	H				
Leather-appointed sport seats <sup>6</sup>				■	
Ventilated leather-appointed sport seats <sup>14</sup>			■	■	
NISMO Recaro <sup>®</sup> leather seats with Alcantara <sup>®</sup> inserts					■
Leather-wrapped steering wheel, shift knob and parking brake lever	■	■	■	■	■
Leather-wrapped steering wheel and shift knob with yellow trim	H				
NISMO Alcantara <sup>®</sup> /leather-wrapped steering wheel and smooth leather-wrapped shift knob					■
Aluminum-trimmed pedals			■	■	■
Heritage Edition interior trim details	H				
NISMO signature red interior stitching					■

Audio/Entertainment	370Z Coupe	Sport Coupe	370Z Touring <sup>™</sup>	Touring Sport	NISMO
AM/FM/CD with six speakers	■				
Bose <sup>®</sup> Premium Audio System with eight speakers, including two subwoofers		■	■	■	■
Active Noise Cancellation (ANC)/Active Sound Enhancement (ASE) <sup>6</sup>		■	■	■	■
SiriusXM <sup>®</sup> Satellite Radio <sup>5</sup>		■	■	■	■
MP3/WMA CD playback capability	■	■	■	■	■
Auxiliary audio input jack <sup>7</sup>					■
Auxiliary audio/video input jacks <sup>7</sup>	■	■	■	■	■
USB port <sup>7</sup>			■	■	■
Bluetooth <sup>®</sup> streaming audio <sup>8</sup>	■	■	■	■	■
Radio Data System (RDS)	■	■	■	■	■
Speed-sensitive volume control	■	■	■	■	■
Illuminated steering wheel-mounted audio controls	■	■	■	■	■

Safety/Security	370Z Coupe	Sport Coupe	370Z Touring <sup>™</sup>	Touring Sport	NISMO
Nissan Advanced Airbag System (AABS) with dual-stage supplemental front airbags with seat belt and occupant-classification sensors <sup>9</sup>	■	■	■	■	■
Driver and passenger seat-mounted side-impact supplemental airbags <sup>9</sup>	■	■	■	■	■
Roof-mounted curtain side-impact supplemental airbags for occupants head protection <sup>6,9</sup>	■	■	■	■	■
Door-mounted curtain side-impact supplemental airbags for occupants head protection <sup>6,14</sup>			■	■	
Vehicle Dynamic Control (VDC) <sup>20</sup> with Traction Control System (TCS)	■	■	■	■	■
Seat belts with pre-tensioners and load limiters (3-point ALR/ELR passenger seat belt system)	■	■	■	■	■
Active Head Restraints	■	■	■	■	■
Energy-absorbing steering column	■	■	■	■	■
Zone Body construction with front and rear crumple zones	■	■	■	■	■
Hood-buckling creases	■	■	■	■	■
Aluminum side-door guard beams	■	■	■	■	■
Tire Pressure Monitoring System (TPMS) <sup>21</sup>	■	■	■	■	■
Immobilizer Key System	■	■	■	■	■
Anti-theft system	■	■	■	■	■

■ Standard  
□ Optional

H Part of Heritage Edition

## DIMENSIONS/CAPACITIES/WEIGHTS/FUEL

Dimensions	
<b>Exterior – mm (inches)</b>	
Wheelbase	2550 (100.4)
Overall length	4255 (167.5) Coupe 4246 (167.2) Roadster
	4330 (170.5) NISMO
Overall width	1845 (72.6) Coupe and Roadster 1870 (73.6) NISMO
Overall height	1315 (51.8) Coupe 1326 (52.2) Roadster
Track Width (front/rear)	
.18" Aluminum-alloy wheels	1550 (61.0)/1595 (62.8)
.19" RAYS <sup>®</sup> forged wheels	1540 (60.6)/1565 (61.6)
	1555 (61.2)/1580 (62.2) NISMO

Aerodynamics – Cd	
Drag coefficient:	.30 on Coupe (0.29 on Sport Coupe models)
Drag coefficient:	.33 on Roadster (0.34 on Touring Sport Roadster)
<b>Interior – mm (inches)</b>	
Head room	971 (38.2) Coupe and Roadster
Leg room	1090 (42.9)
Hip room	1388 (54.6)
Shoulder room	1383 (54.4)


Capacities	
Interior volume – L (cu. ft.)	1461 (51.6)
Cargo volume – L (cu. ft.)	195 (6.9); 119 (4.2) on Roadster
Fuel tank – L (Imp. gal.)	71.9 (15.8)

Curb Weights – kg (lbs.) <sup>22</sup>					
	370Z Coupe	Sport	Touring	Touring Sport	NISMO
Base total					
370Z Coupe	1512 (3333)	1524 (3360)	–	1547 (3411)	1571 (3463)
370Z Roadster	–	–	1582 (3488)	1594 (3514)	–

2019 Fuel Consumption Estimates – L/100 km (mpg)		
City/Hwy	Coupe	Roadster
Manual transmission	13.3 (21)/9.3 (30)	13.6 (21)/9.7 (29)
Automatic transmission	12.6 (22)/9.3 (30)	13.0 (22)/9.7 (29)

— Actual mileage may vary with driving conditions – use for comparison only.

Nissan's environmental action plan focuses on several key areas. In addition to increasing production of Zero Emission vehicles like the 100% electric LEAF<sup>®</sup>, we're improving fuel efficiency across our lineup, and reducing the environmental impact of manufacturing through energy-efficient practices in our plants.



### NISSAN 370Z<sup>®</sup>

Isn't it time you were passionate about the car you drive?  
Welcome to the 2019 370Z.

Follow Nissan Canada on:








## NISSAN INTELLIGENT MOBILITY™

Nissan Intelligent Mobility guides everything we do. We're using new technologies to transform cars from mere driving machines into partners. Together the journey is more confident, connected, and exciting. Whether it's cars that share the task of driving with you, or highways that charge your EV as you go along, it's all in the very near future. And it's a future already taking shape in the Nissan you drive today.

<sup>1</sup>Available feature. <sup>2</sup>Manual transmission only. <sup>3</sup>RearView Monitor may not detect every object and does not eliminate blind spots or warn of moving objects. See Owner's Manual for safety information. <sup>4</sup>Never program while driving. GPS mapping may not be detailed in all areas or reflect current road status. <sup>5</sup>XM® and SiriusXM® Satellite Radio is available in the 10 Canadian provinces and the 48 contiguous United States. Basic monthly subscription required and sold separately after trial period. NavTraffic®/SiriusXM® Traffic is available in select North American markets. In Canada, at time of printing, incident and flow data is available for 12 metropolitan areas of Canada (Vancouver, Calgary, Edmonton, Toronto, Ottawa, Montreal, Quebec City, Hamilton, St. Catharines, Kitchener, Guelph, and London). Subscription sold separately after trial period. All subscriptions subject to customer agreement at [siriusxm.ca/terms](http://siriusxm.ca/terms). All fees and programming subject to change. ©2019 Sirius XM Canada Inc. The Sirius, XM, and SiriusXM names and all related marks and logos are trademarks of Sirius XM Radio Inc. All other trademarks are the property of their respective owners. <sup>6</sup>Coupe only. <sup>7</sup>Driving is serious business and requires your full attention. If you have to use the connected device while driving, exercise extreme caution at all times so full attention may be given to vehicle operation. <sup>8</sup>Availability of specific features is dependent upon the phone's Bluetooth® support. Please refer to your phone Owner's Manual for details. Bluetooth® word mark and logos are owned by Bluetooth SIG, Inc., and any use of such marks by Nissan is under licence. <sup>9</sup>Airbags are only a supplemental restraint system; always wear your seat belt. Rear-facing child restraints should not be placed in the front-passenger's seat. Also, in addition to any other requirement of applicable law, all children 12 and under should ride in the rear seat properly secured in child restraints, booster seats, or seat belts according to their size. Airbags will only inflate in certain accidents; see your Owner's Manual for more details. <sup>10</sup>Not available on NISMO® models. <sup>11</sup>Do not drive the vehicle with the top partially opened. Always make sure the top is either fully opened or closed before driving. See Owner's Manual regarding proper use. <sup>12</sup>Tires shown are different from actual production vehicle. <sup>13</sup>Extra cost option. <sup>14</sup>Roadster only. <sup>15</sup>See your Nissan dealer and read the actual limited warranty for complete details. <sup>16</sup>Cargo and load capacity limited by weight and distribution. Always secure cargo. <sup>17</sup>Whichever occurs first. <sup>18</sup>Premium fuel required. <sup>19</sup>Brake Assist cannot prevent all collisions and may not provide warning or braking in all conditions. Driver should monitor traffic conditions and brake as needed to prevent collisions. See Owner's Manual for safety information. <sup>20</sup>Vehicle Dynamic Control cannot prevent collisions due to abrupt steering, carelessness, or dangerous driving techniques. It should remain on when driving, except when freeing the vehicle from mud or snow. See Owner's Manual for safety information. <sup>21</sup>Tire Pressure Monitoring System is not a substitute for regular tire pressure checks. See Owner's Manual for safety information. <sup>22</sup>Based on manual transmission model. Alcantara® is a registered trademark of Alcantara S.p.A. Corporation. Bluetooth® is a registered trademark of Bluetooth SIG, Inc. Bose® is a registered trademark of The Bose Corporation. Bridgestone® and Potenza® are registered trademarks of Bridgestone Corporation. Dunlop® is a registered trademark of DNA Ltd. Corporation. EXEDY® is a registered trademark of EXEDY Corporation. Facebook® is a registered trademark of Facebook, Inc. HomeLink® is a registered trademark of Gentex Corporation. Instagram® is a registered trademark of Instagram, LLC. iPod® is a registered trademark of Apple, Inc. All rights reserved. iPod® or other external device not included. RAYS® is a registered trademark of RAYS Engineering. Recaro® is a registered trademark of Recaro North America Inc. The Sirius, XM, and SiriusXM names and all related marks and logos are trademarks of Sirius XM Radio Inc. All other trademarks are the property of their respective owners. SP Sport MAXX® is a registered trademark of SRI USA, Inc. Twitter® is a registered trademark of Twitter, Inc. Yokohama® and ADVAN Sport® are registered trademarks of Yokohama Tire Corporation. YouTube® is a registered trademark of Google Inc. All illustrations, photographs and specifications in this brochure are based on the latest product information. See actual vehicle for complete accuracy. Nissan Canada Inc. reserves the right to make changes at any time, without notice, in prices, colours, materials, equipment, specifications and models, and to discontinue models or equipment. For information on additional options and accessories, contact your Nissan Dealership. Registered trademarks are property of their respective owners. At [nissan.ca](http://nissan.ca), you'll find a way to "build your own Nissan," a dealer locator, and more information about key Nissan support services. The Nissan names, logos, product names, feature names, and slogans are trademarks owned by or licensed to Nissan Motor Co. Ltd. and/or its North American subsidiaries. **Always wear your seat belt, and please drive responsibly.** Printed in June 2018. Catalogue number: 99999-370Z19EN. ©2018 Nissan Canada Inc. All rights reserved.

visit [nissan.ca](http://nissan.ca)