



2023  
GT-R®





## The 565-HP non-conformist

It is, quite simply, unlike any other supercar. It rewrites the laws of aerodynamics and makes the air your ally. ATTESA E-TS® All-Wheel Drive redefines ultimate performance to include all four seasons. And it proves you can thrill to supercar performance and still have four seats, a handcrafted interior, and even a trunk. The 2023 Nissan GT-R.® Convention never had a chance.

# Creating an Instant connection to intensify your drive

A tradition of craftsmanship makes GT-R® a supercar that will take your breath away — even when sitting still. Instrumentation designed for a quick read. Hand-selected materials that deserve a lingering touch. A Display Commander that connects you to your world, and paddle shifters that connect you to a pulse-raising 565 horsepower. Wherever you look, the interior of the GT-R is the embodiment of performance art.

Semi-aniline, leather-appointed heated front seats<sup>1</sup>

Hand-selected, single-hide dashboard cover<sup>1</sup>

Display Commander media controller

Active Noise Cancellation

Bose audio system with 11 speakers

Steering wheel-mounted paddle shifters



Five customizable performance screens let the driver organize key information, choosing from a variety of engine, acceleration, braking, and handling parameters. A factory preset screen features a dedicated stopwatch.<sup>2</sup>



The Display Commander lets you dial in your world, allowing you to control key functions through the 203 mm (8") multi-touch screen. The dial lets you easily scroll through all menus and move selections around the screen.<sup>3</sup>



Equipped with Siri® voice control, Apple CarPlay® brings your contacts, favourite messaging apps, Apple Music® playlists, Apple Maps, and more on board to your GT-R. Simply plug in your compatible iPhone® and go.<sup>4,5,6,7</sup>

## 565 horses — all running in the same direction

Massive grip combined with refinement. A suspension that tells you everything you need to know. It all adds up to create the GT-R's unique ability to combine supreme confidence with the pure adrenaline rush of 565 thoroughbred horsepower.

One key to the quickness of the GT-R® is the All-Wheel Drive's ability to put the power down sooner in a corner. In contrast, as they approach the limit of cornering grip, many powerful rear-wheel drive cars require drivers to wait before applying power until the exits of the corners, to avoid upsetting the handling of the cars.

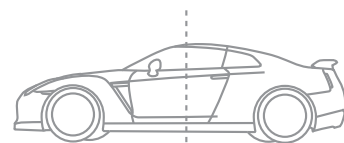


Nissan GT-R® Premium shown in Jet Black Pearl.



Look beyond the sheer size of the 15.35" front and 15.0" rear brake rotors, and you'll see that GT-R features some of the biggest ideas in racing. Its 6-piston front and 4-piston rear calipers provide stronger, more-even clamping power. A single one-piece "monoblock" aluminum caliper offers extreme rigidity with light weight. The cross-drilled rotors have diamond-shaped ventilation ribs. And a full-floating rotor allows the outer disc to expand away from the hub, reducing the tendency of the rotor to warp.

## DYNAMIC



## BALANCE

Another rule bites the dust, courtesy of GT-R — a 55 front/45 rear static ratio is actually ideal for handling. At the precise moment the driver accelerates out of a corner's apex, the weight distribution shifts rearward and becomes an approximate 50/50 balance, translating into enhanced tire contact for better acceleration, quicker turns, and a handling feel that's uniquely GT-R.

## Mastery comes in the silence of a clean room

Only five master craftsmen in the world are allowed to hand-assemble the GT-R's engine. They are known as "Takumi" — a Japanese term used to describe a master craftsman who has perfected their skills over years of painstaking work and dedication.

Each engine is assembled by a single craftsman and proudly bears a plaque carrying their signature. Each Takumi inspects every piece for quality and to guarantee precision. But it's more than just exceptional skill: as one of the Takumi says, "We put our souls into each engine, hoping to deliver that excitement to customers."



46 million square kilometres  
of snow per year

## One supercar

to let you enjoy them

**Biased performance** Instead of the traditional 50/50-torque split between front and rear axles, the GT-R's electronically controlled All-Wheel Drive system can send up to 50% of torque to the front wheels as needed or provide nearly 100% of available torque to the rear wheels. This provides the steering feel and response of a rear-wheel drive vehicle — the preferred choice for racecar drivers and serious enthusiasts — while still giving the added confidence and controllability that only All-Wheel Drive can offer.



Nissan GT-R® Premium shown in Pearl White TriCoat.

## To break records, first break with convention

The GT-R® philosophy says nothing is sacred — question everything, and come up with new answers to achieve the desired results.

A perfect example is the Premium Midship platform. Moving the engine farther back in the chassis reduces weight over the nose for better handling. In traditional layouts, this would place the transmission rearward, intruding into the passenger cabin.

The solution: Separate the transmission from the engine, and mount it with the transfer case in the rear of the vehicle, creating an independent rear transaxle. A brilliant innovation in pursuit of handling perfection.

Another challenge was to make the GT-R as slippery to the wind as possible but still allow a rear seat and a usable trunk — unheard of in supercars. While you see a substantial, powerful supercar, to the wind, advanced aerodynamics let it punch through the air like a low-slung, mid-engine design.

Years of testing in the wind tunnel have developed a body that masterfully directs air around the exterior, creating an incredibly clean coefficient of drag of just 0.26 Cd. Air underneath the body is used to create downforce, pulling the Nissan GT-R to the road, as well as helping cool key components.



For maximum acceleration, GT-R's 6-speed sequential dual-clutch transmission can snap off incredibly quick shifts when in R Mode. Steering wheel-mounted shifters help ensure that a rapid-fire shift is always easily within reach, regardless of wheel position.



### Premium Midship Engine Position

Centre of engine placed rearward in chassis for superior handling.

### Carbon-composite Driveshaft

Helps to reduce weight while still capable of handling the engine's prodigious output.

### Slanted Input and Output Shafts

The input and output shafts are slanted and flattened out to lower the centre of gravity, further enhancing handling.

### Rear Transmission Position

Transmission placed at rear of chassis for better traction and braking.

### Independent Rear Axle

By moving the transfer case to the rear of the vehicle, GT-R creates an independent rear transaxle.

Nissan GT-R® NISMO®

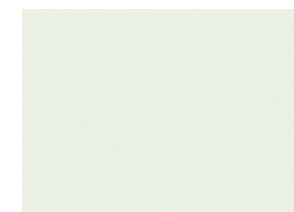
# Beyond ultimate

Ultimate Nissan vehicle, ultimate GT-R, ultimate supercar. Combining the amazing performance of the GT-R and the passionate engineering of the legendary racing arm of Nissan, you have the 600-horsepower 2023 Nissan GT-R NISMO — a bold step beyond ultimate.

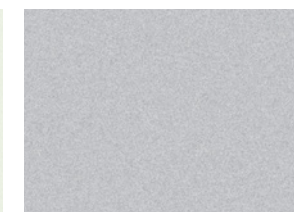


Nissan GT-R® NISMO® shown in Pearl White TriCoat.

## CHOOSE YOUR COLOUR AND INTERIOR



Pearl White TriCoat<sup>9</sup> QAB



Super Silver QuadCoat<sup>9</sup> KAB

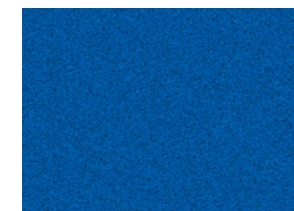


Solid Red A54

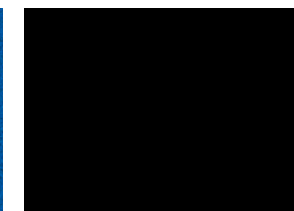
	PREMIUM	NISMO
BLACK LEATHER <sup>8</sup>	■	
HAI GREY LEATHER <sup>8,9</sup>	P	
KURO NIGHT LEATHER <sup>8,9</sup>	P	
RED AMBER LEATHER <sup>8,9</sup>	P	
BLACK/RED LEATHER <sup>8</sup>		■

	PREMIUM	NISMO
BLACK LEATHER <sup>8</sup>	■	
HAI GREY LEATHER <sup>8,9</sup>		
KURO NIGHT LEATHER <sup>8,9</sup>	P	
RED AMBER LEATHER <sup>8,9</sup>	P	
BLACK/RED LEATHER <sup>8</sup>		■

	PREMIUM	NISMO
BLACK LEATHER <sup>8</sup>	■	
HAI GREY LEATHER <sup>8,9</sup>		
KURO NIGHT LEATHER <sup>8,9</sup>	P	
RED AMBER LEATHER <sup>8,9</sup>		
BLACK/RED LEATHER <sup>8</sup>		■



Bayside Blue QuadCoat<sup>9</sup> RCB



Jet Black Pearl<sup>9</sup> GAG

	PREMIUM	NISMO
BLACK LEATHER <sup>8</sup>		
HAI GREY LEATHER <sup>8,9</sup>		
KURO NIGHT LEATHER <sup>8,9</sup>	P	
RED AMBER LEATHER <sup>8,9</sup>		
BLACK/RED LEATHER <sup>8</sup>		

	PREMIUM	NISMO
BLACK LEATHER <sup>8</sup>		
HAI GREY LEATHER <sup>8,9</sup>		
KURO NIGHT LEATHER <sup>8,9</sup>	P	
RED AMBER LEATHER <sup>8,9</sup>	P	
BLACK/RED LEATHER <sup>8</sup>		■

■ Standard  
P Part of Premium Interior Package

Nissan has taken care to ensure that the digital colour swatches presented here are the closest possible representation of actual vehicle colours. Swatches may vary slightly due to viewing light or screen quality. Please see the actual vehicle and colours at your dealer.

NISMO  
RECARO® FRONT SEATS



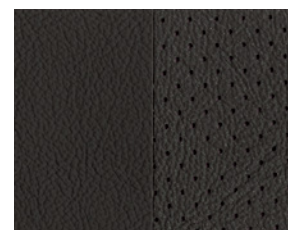
NISMO-TUNED  
SUSPENSION



NISSAN/BREMBO®  
CARBON CERAMIC BRAKING SYSTEM



NISMO-TUNED 3.8-LITRE  
TWIN-TURBOCHARGED V6 ENGINE



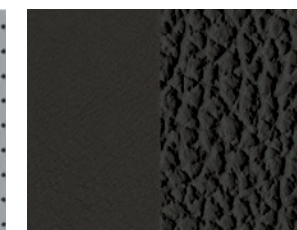
BLACK LEATHER/  
SYNTHETIC SUEDE  
INSERTS<sup>8</sup>

Premium



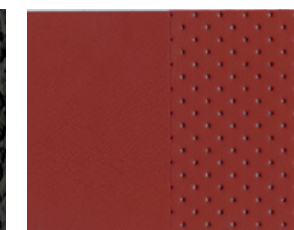
HAI GREY  
SEMI-ANILINE LEATHER<sup>8,9</sup>

Premium Interior Package



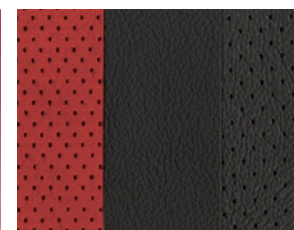
KURO NIGHT  
SEMI-ANILINE LEATHER<sup>8,9</sup>

Premium Interior Package



RED AMBER  
SEMI-ANILINE LEATHER<sup>8,9</sup>

Premium Interior Package



BLACK LEATHER/RED  
SYNTHETIC-SUEDE  
INSERTS<sup>8</sup>

NISMO

## SPECIFICATIONS

Engines	Premium	NISMO®
3.8-litre DOHC 24-valve twin-turbocharged V6	■	
— 565 horsepower @ 6800 rpm		
— 467 lb.-ft. of torque @ 3300–5800 rpm		
NISMO-tuned 3.8-litre DOHC 24-valve twin-turbocharged V6		■
— 600 horsepower @ 6,800 rpm		
— 481 lb.-ft. of torque @ 3600–5800 rpm		
Continuously Variable Valve Timing Control System (CVTCS) on intake valves	■	■
Aluminum cylinder block with high-endurance/low-friction plasma-sprayed bores	■	■
Aluminum pistons	■	■
Nissan Direct Ignition System with iridium-tipped spark plugs	■	■
Electronic drive-by-wire throttle	■	■
Pressurized lubrication system with thermostatically controlled cooling and magnesium oil sump pan	■	■
Fully symmetrical dual intake and low back-pressure exhaust systems	■	■
Secondary air intake system to rapidly heat catalysts to peak cleaning efficiency	■	■
Special 50:50 cold-weather coolant mix	■	■
Engine block heater	■	■

Drivetrain		
ATTESA E-TS® All-Wheel Drive (AWD) with patented independent rear-mounted transaxle	■	■
Dual-clutch 6-speed transmission with three driver-selectable modes	■	■
Steering column-mounted paddle shifters	■	■
Downshift Rev Matching	■	■
Rigid, lightweight carbon-composite main driveshaft	■	■
High-performance 1.5-way mechanical limited-slip rear differential	■	■

Brakes		
Nissan/Brembo® braking system	■	
Nissan/Brembo carbon ceramic braking system		■
15.35" front/15.0" rear two-piece floating rotors with diamond-pattern internal ventilation	■	
16.14" front/15.35" rear carbon ceramic two-piece floating-rotors with diamond-pattern internal ventilation		■
6-piston front/4-piston rear monoblock calipers with racecar-inspired 3-point radial mounting	■	
Super-rigid 6-piston front/4-piston rear monoblock calipers with racecar-inspired 3-point radial mounting		■
Anti-lock Braking System (ABS)	■	■
Electronic Brake force Distribution (EBD)	■	■

Suspension/Steering		
Double wishbone front suspension with aluminum arms	■	■
Multi-link rear suspension with aluminum arms	■	■
Rigid front and rear suspension subframes with 6-point mounting to body	■	■
Bilstein® DampTronic® system with three driver-selectable modes	■	■
NISMO-tuned suspension		■
Hollow front and rear stabilizer bars	■	■
NISMO-tuned 17.3 mm hollow rear stabilizer bar		■
Vehicle-speed-sensitive power steering	■	■
2.4 steering-wheel turns lock-to-lock	■	■

Driver Assistance Technologies		
Cruise control	■	■
RearView Monitor <sup>10</sup>	■	■
Front and Rear Sonar System <sup>11</sup>	■	■
Vehicle Dynamic Control <sup>12</sup> (VDC <sup>12</sup> ) with three driver-selectable modes <sup>12</sup>	■	■
Traction Control System (TCS)	■	■
Hill start assist	■	■

Wheels/Tires		
20" x 9.5" front and 20" x 10.5" rear RAYS® forged-alloy wheels	■	
20" x 10.0" front and 20" x 10.5" rear NISMO black RAYS forged-alloy wheels		■
255/40ZRF20 front and 285/35ZRF20 rear Dunlop® SP Sport Maxx® GT 600 DSST CTT high-performance run-flat tires <sup>13</sup>	■	
255/40ZRF20 front and 285/35ZRF20 rear Dunlop® SP Sport Maxx® GT 600 DSST CTT (NR1) high-performance run-flat tires <sup>13</sup>		■

Chassis	Premium	NISMO®
Premium Midship (PM) platform	■	■
Hybrid unibody structure	■	■
Body-bonding to key spot-welds		■

Aerodynamics		
Impact-resistant polypropylene front undercover	■	■
Heat-resistant Sheet Moulded Compound undercover behind front axle	■	■
Rigid, heat-resistant Carbon-Sheet Moulded Compound undercover ahead of rear-mounted transaxle	■	■
Carbon-fibre composite diffuser tray at rear of car	■	■
Front fender vents designed to optimize air management around the wheels	■	■
Side air vents	■	■
Body-colour rear spoiler	■	
NISMO aerodynamic body design — carbon-fibre front and rear fascia, side sills, and rear spoiler <sup>14</sup>		■

Exterior Features		
Die-cast aluminum front shock towers and inner door structures	■	■
Carbon-fibre roof <sup>14</sup>		■
Aluminum hood	■	
Carbon-fibre hood <sup>14</sup>		■
Carbon-fibre front fenders <sup>14</sup>		■
Aluminum outer door skins	■	■
Aluminum trunk lid	■	
Carbon-fibre trunk lid <sup>14</sup>		■
Carbon-fibre engine chassis brace	■	■
Carbon-composite front crossmember/radiator support	■	■
Multi-LED headlights with signature lighting	■	■
Auto-on/off headlights	■	■
LED Daytime Running Lights, taillights, and brake lights	■	■
Dual power folding heated outside mirrors	■	■
Flushed-mounted aluminum door handles	■	■
Titanium exhaust with exhaust sound control	■	■
Acoustic windshield	■	■
UV-reducing solar glass (windshield and front doors)	■	■

Comfort/Convenience		
Nissan Intelligent Key® with Push Button Ignition	■	■
HomeLink® universal garage-door opener	■	■
Dual Zone Automatic Temperature Control	■	■
Power front windows with one-touch auto-up/down	■	■
Power door locks with auto-locking feature	■	■
Tilt and telescoping steering column with integrated gauges	■	■
Variable-intermittent speed-sensitive windshield wipers	■	■
Sun visors with illuminated vanity mirrors	■	■
Auto-dimming inside rearview mirror	■	■
Two 12-volt DC power outlets <sup>7</sup>	■	■

Seating/Appointments		
Leather-appointed front seats with synthetic suede inserts	■	
Hand-stitched semi-aniline leather-appointed front seats	P	
NISMO Recaro® leather-appointed front seats		■
8-way power driver's seat	■	■
4-way power front-passenger's seat	■	■
Heated front seats	■	■
Hand-stitched semi-aniline leather interior treatments	P	
NISMO Black/Red interior treatment		■
Dual individual rear seats with centre armrest	■	■
Leather-appointed steering wheel	■	
NISMO Alcantara®-wrapped steering wheel		■
Leather-wrapped shift knob and parking brake lever	■	■
Carbon-fibre and machined aluminum interior trim	■	■
Aluminum-trimmed pedals	■	■

Infotainment	Premium	NISMO®
Electronic analog instrument cluster with upshift indicator, vehicle information display, and digital gear indicator	■	■
Driver-configurable Multi-Function Display system with graphical readouts of vehicle and driving data displayed on a total of six screens <sup>2</sup>	■	■
NissanConnect® 203 mm (8") touch-screen display <sup>3</sup>	■	■
Display Commander	■	■
Nissan Navigation System <sup>6</sup>	■	■
SiriusXM Traffic and Travel Link with 3-month complimentary trial access <sup>15</sup>	■	■
NissanConnect® Services powered by SiriusXM with complimentary trial access to 3-year Select and 6-month Premium Plus packages <sup>4</sup>	■	■
Voice Recognition for audio and navigation <sup>5</sup>	■	■
Apple CarPlay® integration <sup>4</sup>	■	■
Hands-free Text Messaging Assistant <sup>5</sup>	■	■
Bluetooth® Hands Free Phone System <sup>16</sup>	■	■
Bose Premium Audio System with 11 speakers, including dual subwoofers	■	■
Active Noise Cancellation	■	■
Active Sound Enhancement	■	■
Steering wheel-mounted audio controls	■	■
Speed-sensitive volume control	■	■
Two USB ports <sup>7</sup>	■	■
SiriusXM with 3-month complimentary trial access <sup>15</sup>	■	■
Streaming Audio via Bluetooth® wireless technology <sup>16</sup>	■	■

Safety/Security		
Nissan Advanced Airbag System with dual-stage supplemental front airbags, seat belt sensors, and occupant classification sensor <sup>17</sup>	■	■
Driver and front-passenger seat-mounted side-impact supplemental airbags <sup>17</sup>	■	■
Roof-mounted curtain side-impact supplemental airbags for front occupant head protection <sup>17</sup>	■	■
Front seat belts with pre-tensioners and load limiters	■	■
LATCH System (Lower Anchors and Tethers for Children)	■	■
Zone Body construction with front and rear crumple zones	■	■
Hood-buckling creases	■	■
Side-door guard beams	■	■
Energy-absorbing steering column	■	■
Tire Pressure Monitoring System (TPMS) <sup>18</sup>	■	■
Immobilizer Key System	■	■
Anti-theft system	■	■

## PACKAGE

<b>P Premium Interior Package</b>
<ul style="list-style-type: none"> <li>Hand-stitched semi-aniline leather-appointed front seats</li> <li>Hand-stitched semi-aniline leather interior treatments</li> </ul>

■ Standard

P Part of Premium Interior Package

Nissan's environmental action plan focuses on several key areas. In addition to increasing production of Zero Tailpipe Emission vehicles like the 100% electric LEAF,<sup>®</sup> we're improving fuel efficiency across our lineup, and reducing the environmental impact of manufacturing through energy-efficient practices in our plants.



## DIMENSIONS/CAPACITIES/WEIGHTS/FUEL

Dimensions	
<b>Exterior — mm (Inches)</b>	
Wheelbase	2780 (109.4)
Overall length	4710 (185.4)
Overall width	1895 (74.6)
Overall height	1370 (53.9)
Track width (front/rear) Premium	1590 (62.6)/1600 (63)
Track width (front/rear) NISMO	1600 (63)/1600 (63)

<b>Aerodynamics — Cd</b>	
Drag coefficient	0.26
<b>Interior (front/rear) — mm (Inches)</b>	
Head room	968 (38.1)/852 (33.5)
Leg room	1132 (44.6)/670 (26.4)
Hip room	1388 (54.7)/1141 (44.9)
Shoulder room	1380 (54.3)/1269 (50)

Capacities	
Seating capacity	4
Interior passenger volume — L (cu. ft.)	2237 (79)
Fuel tank — L (Imp. gal.)	73.8 (16.2)
Cargo volume — L (cu. ft.) <sup>19</sup>	249 (8.8)

Curb Weights – kg (lbs.)		
	Premium	NISMO
Base total	1785 (3935)	1754 (3867)
Weight distribution	55/45	55/45

2023 Fuel Consumption Estimates – L/100 km (MPG) <sup>20</sup>	
City	14.4 (20)
Highway	10.9 (26)

— Actual mileage may vary with driving conditions – use for comparison only.

## NISSAN GT-R®

Isn't it time you were passionate about the vehicle you drive?  
Welcome to the 2023 Nissan GT-R.®

Follow Nissan Canada on:





Nissan Intelligent Mobility moves you one step ahead. In cars that feel like an extension of you, helping you see more and sense more, reacting with you, and sometimes even for you. Nissan Intelligent Mobility is about a better future – moving us to a world that's safer, more sustainable, and exciting.

<sup>1</sup>Available feature. <sup>2</sup>Information displayed is dependent on how vehicle is equipped. Driving is serious business and requires your full attention. If you have to use the feature while driving, exercise extreme caution at all times so full attention may be given to vehicle operation. <sup>3</sup>Driving is serious business and requires your full attention. If you have to use the feature while driving, exercise extreme caution at all times so full attention may be given to vehicle operation. <sup>4</sup>Feature availability is dependent on vehicle model, trim level, packaging and options. Compatible connected device may be required and feature availability may be dependent on device's capability. Refer to connected device's Owner's Manual for details. Late availability for some features. Driving is serious business and requires your full attention. Only use features and connected devices when safe and legal to do so. Some features, including automatic crash notification and SOS, are dependent upon the telematics device being in operative condition, its ability to connect to a wireless network, compatible wireless network availability, navigation map data and GPS satellite signal receptions, the absence of which can limit or prevent the ability to reach Customer Care or receive support. GPS mapping may not be detailed in all areas or reflect current road status. Never program GPS while driving. Only use Remote Horn feature in accordance with any laws, rules or ordinances in effect in your vehicle's location. Some services and features are provided by independent companies not within Nissan's control. **Should service provider terminate or restrict service or features, service or features may be suspended or terminated without notice or with no liability to Nissan or its partners or agents.** Services and features may require compatible cellular network provided by independent companies not within Nissan or its partners' or agents' control. Cellular network signal strength may vary and may not be available in all areas or at all times. Services and features may not function if cellular network is unavailable, restricted, or terminated. Nissan and its partners or agents are not responsible for associated costs or other third party changes that may be required for continued operation due to cellular network unavailability, restriction, or termination (including equipment replacements/upgrades, if available, or roaming charges on alternative networks). Technology is evolving, and changes by independent companies are not within Nissan's or its partners' or agents' control. Enrollment, owner consent, personal identification number (PIN), and subscription agreement may be required to receive full suite of features and services. Trial periods (if applicable) begin on the date of vehicle purchase or lease of a new Nissan. Trial periods may be subject to change at any time and may be subject to early termination without notice. Required subscriptions may be sold separately for each available feature or service after trial period ends, and may continue until you call service provider to cancel. Installation costs, one-time activation fee, other fees and taxes may apply. Fees and programming subject to change. Feature may be subject to age restrictions in some areas. Subscriptions governed by service provider's subscription agreement, terms and conditions and privacy statements available at service provider's website. Text rates or data usage may apply. The Nissan names, logos and slogans are trademarks owned by or licensed to Nissan Motor Co. Ltd. or its North American subsidiaries. Other trademarks and trade names are those of their respective owners. **For important safety information, system limitations, and additional operating and feature information, see Dealer or Owner's Manual.** <sup>5</sup>Use the text messaging feature after stopping your vehicle in a safe location. If you have to use the feature while driving, exercise extreme caution at all times so full attention may be given to vehicle operation. Compatible smartphone required. Text rates and/or data usage may apply. <sup>6</sup>Never program while driving. GPS mapping may not be detailed in all areas or reflect current road status. <sup>7</sup>Driving is serious business and requires your full attention. If you have to use the connected device while driving, exercise extreme caution at all times so full attention may be given to vehicle operation. Smartphone or other external device not included. <sup>8</sup>Leather appointments. <sup>9</sup>Extra cost option. <sup>10</sup>RearView Monitor may not detect every object and does not eliminate blind spots or warn of moving objects. See Owner's Manual for safety information. <sup>11</sup>Sonar System may not detect every object. Driver should always check surroundings before driving. See Owner's Manual for safety information. <sup>12</sup>Vehicle Dynamic Control cannot prevent collisions due to abrupt steering, carelessness, or dangerous driving techniques. It should remain on when driving, except when freeing the vehicle from mud or snow. See Owner's Manual for safety information. <sup>13</sup>Always use appropriate tires for weather conditions. See Owner's Manual for details. Failure to use appropriate tires could cause an accident resulting in serious injury or death. <sup>14</sup>Dry carbon-fibre requires specific maintenance. Please see your Owner's Manual for details. <sup>15</sup>XM® and SiriusXM® Satellite Radio is available in the 10 Canadian provinces and the 48 contiguous United States. Subscription sold separately after trial period. All subscriptions subject to customer agreement at [siriusxm.ca/terms](http://siriusxm.ca/terms). All fees and programming subject to change. ©2022 Sirius XM Canada Inc. The Sirius®, XM®, and SiriusXM® names and all related marks and logos are trademarks of Sirius XM Radio Inc. All other trademarks are the property of their respective owners. <sup>16</sup>Availability of specific features is dependent upon the phone's Bluetooth® support. Please refer to your phone Owner's Manual for details. Bluetooth® word mark and logos are owned by Bluetooth SIG, Inc., and any use of such marks by Nissan is under licence. <sup>17</sup>Airbags are only a supplemental restraint system. Always wear your seat belt. Rear-facing child restraints should not be placed in the front-passenger's seat. All children 12 and under should ride in the rear seat properly secured in child restraints, booster seats, or seat belts according to their size. Airbags will only inflate in certain accidents. See Owner's Manual for safety information. <sup>18</sup>Tire Pressure Monitoring System is not a substitute for regular tire pressure checks. See Owner's Manual for safety information. <sup>19</sup>Cargo and load capacity limited by weight and distribution. Always secure cargo. <sup>20</sup>2023 Fuel Consumption Estimate L/100 km (MPG) – 14.4 (20) City / 10.9 (26) Highway. Actual mileage may vary with driving conditions. Use for comparison only. Alcantara® is a registered trademark of Alcantara S.p.A. Corporation. Apple CarPlay® and Siri® are registered trademarks of Apple, Inc. Bilstein® and DampTronic® are registered trademarks of ThyssenKrupp Bilstein GmbH. Bluetooth® is a registered trademark of Bluetooth SIG, Inc. Bose® is a registered trademark of The Bose Corporation. Brembo® is a registered trademark of Freni Brembo S.p.A. Dunlop® is a registered trademark of DNA Ltd. Corporation. Facebook® is a registered trademark of Facebook, Inc. Google, Android, and Android Auto are trademarks of Google LLC. To use Android Auto on your car display, you'll need an Android phone running Android 6 or higher, an active data plan, and the Android Auto app. HomeLink® is a registered trademark of Gentex Corporation. Instagram® is a registered trademark of Instagram, LLC. iPhone® is a registered trademark of Apple, Inc. All rights reserved. iPhone® or other external device not included. RAYS® is a registered trademark of RAYS Engineering. Recaro® is a registered trademark of RECARO Holdings GmbH. SP Sport Maxx® is a registered trademark of The Goodyear Tire & Rubber Company. Twitter® is a registered trademark of Twitter, Inc. YouTube® is a registered trademark of Google LLC. This brochure is intended for general descriptive and informational purposes only. It is subject to change and does not constitute an offer, representation or warranty (express or implied) by Nissan Canada Inc. Interested parties should confirm the accuracy of any information in this brochure as it relates to a vehicle directly with Nissan Canada Inc. before relying on it to make a purchase decision. Nissan Canada Inc. reserves the right to make changes, at any time, without prior notice, in prices, colours, materials, equipment, specifications, and models and to discontinue models or equipment. **Due to continuous product development and other pre- and post-production factors, actual vehicle, materials and specifications may vary from this brochure. Some vehicles shown with optional equipment.** See the actual vehicle for complete accuracy. Availability and delivery times for particular models or equipment may vary. For additional information on availability, options or accessories, see your Nissan dealer or contact Nissan Canada Inc. For more information on Nissan products and services visit [nissan.ca](http://nissan.ca). The Nissan names, logos, product names, feature names, and slogans are trademarks owned by or licensed to Nissan Motor Co. Ltd. and/or its North American subsidiaries. Catalogue number: **99999-GTR23EN**. ©2022 Nissan Canada Inc. All rights reserved.