



Innovation
that excites

2015
JUKE[®]





WHAT IF,
YOU COULD HAVE A SPORTS CAR
AND AN SUV ALL IN ONE RIDE –
FINE-TUNED BY YOU?

It's a lot to ask, but JUKÉ® delivers big with a higher ride, quicker response, customization on the fly, and a distinct ability to turn heads. This unique Sport Cross gives you serious boost along with efficiency, and an available innovative All-Wheel Drive system that actually turns power into grip. Want style? You can customize just about every detail, inside and out, to make it unique to you. With JUKÉ®, you really can have it all.

YOU'LL NEVER LOOK AT JUKE® THE SAME WAY AGAIN.

Welcome to the all-new reality of JUKE® Colour Studio – tailor-made for you, by you. Express yourself and colour perceptions with JUKE®'s exciting new styling cues. For the first time, your own personal style is brought to life through JUKE® Colour Studio. Featuring colour-coordinated bumper accents and headlight trim rings, side mirror caps, and vibrant alloy wheel centre caps, along with eight other configurable accents, all chosen to your exacting taste.

COLOUR LEGEND



JUKE® accent colours:
Red, Orange, Black Purple, White, Matte Black,
and Carbon-fibre

To see more, go to accessories.nissan.ca



JUKE® Colour Studio

Side Mirror Caps
colours available



Interior Inserts
colours available



Headlight Trim Rings
colours available



Front and Rear
Bumper Accents
colours available



Door Handle Covers
colours available



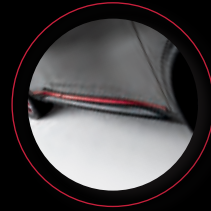
Floor Mats
colours available



Lower Liftgate Accent
colours available



Side Door Sills
colours available



Wheel Centre Caps
colours available



17" Alloy Wheels
colours available



Rear Roof Spoiler
colours available



Liftgate Handle Finishers
colours available



CHOOSE TO OUTPERFORM. THE POWER IS ON YOUR SIDE.

Xtronic CVT® (Continuously Variable Transmission) with Manual Mode – Smooth as butter and fun to drive. Unlike traditional automatic transmissions, JUKE®'s CVT transmission eliminates the need for gear-hunting and delivers a seamless wave of power. In case you miss the feeling of gears, you can engage Manual mode and bring it right back. Of course, a manual transmission is still available for the die-hard enthusiast.

Instead of traditional All-Wheel Drive (AWD) systems that only distribute power from front to back, the torque vectoring AWD that's available on JUKE® adjusts power side-to-side to the rear wheels. When cornering, this means the outside rear wheel gets more power, helping you rotate into the curve and accelerate out.

Torque Vectoring AWD

In a turn, this multi-sensor system automatically transfers rear-wheel power to the left or right, depending on which needs it more, so any change in direction can be performed smoothly and securely.



POWER THE ROAD LIKE A PRO. **188^{HP}**

1.6-L Direct Injection Gasoline (DIG™) Turbo Engine – If you could design an engine to provide the ideal balance of efficiency and power, this would be it. Turbo boost gives you more than enough passing power when you need it, while the compact engine design and two-level direct injection system deliver fuel-sipping economy when you don't.



Nissan JUKE® SL shown in Black/Red Leather.



Nissan JUKE® SL shown in Black/Red Leather. U.S. instrumentation shown.



Bump up a class. JUKE® adds the premium touches that make every drive a special occasion. From a standard Nissan Intelligent Key® that grants you entry and lets you drive away without ever fumbling for a key, to available Black and Red Leather-appointed seating. There's an available power sliding moonroof to let in some light, and standard rear privacy glass when your entourage prefers to travel incognito.

NISSAN I-CON SYSTEM CHANGE YOUR MOOD ON THE FLY.

Like a great smartphone, JUKE®'s available I-CON system with drive mode selector puts everything you need in one place. Tell JUKE® what kind of mood you're in, and it serves up a custom-tailored drive. All your climate control functions are there, too. The I-CON system even lets you know how you're doing, with cool displays for all the different functions you can call up.



Torque It. Boost It. Save It – In JUKE®, it's up to you. Drive in Normal for the best combination of performance and efficiency. Lock in Sport mode, and steering feel, transmission gearing (Xtronic CVT® models only), and throttle response quickly adjust to make every curve count. Or hit the Eco mode button and get the most out of every drop of fuel. And with a push of the Climate button, I-CON switches displays and now becomes your control centre for all things comfort.

NissanConnect^{SM4}

YOUR WORLD, AT YOUR FINGERTIPS.

With standard NissanConnectSM with Mobile Apps, your JUKE[®] becomes your smartphone's best friend. Which means no more separation anxiety for you. Because now, your own hand-picked music, Facebook[®] news feed, latest tweets, TripAdvisor[®] tips, and more all come along for the ride, working seamlessly together through your smartphone and JUKE[®]'s 127 mm (5.0") colour touch-screen. And it keeps on getting better: the basic app package is included for the first three years.⁴



Your Nissan[®] JUKE[®] also keeps you in the loop with the available Nissan Navigation System (featuring Voice Recognition),⁵ with standard hands-free text messaging,⁶ Bluetooth[®] hands-free calling and streaming audio,⁷ plus an iPod[®]/USB input.⁸



NISSAN AROUND VIEW[®] MONITOR¹

IT'S GOT YOUR BACK, AND THE REST OF YOU TOO.

What if parallel parking was easier? A rearview monitor is great when backing up – but when it comes to parking, it's nice to see more than just what's behind you. That's why JUKE[®] offers an available Around View[®] Monitor. Four cameras give you a virtual 360° bird's-eye view of your vehicle, with selectable split-screen close-ups of the front, rear, and curbside views, so you can get a better look.^{1,2} And since all obstacles aren't stationary, Moving Object Detection (MOD) keeps an eye around your JUKE[®] and can warn you about moving objects detected in your vicinity.³

¹Parking aid/convenience feature. Cannot completely eliminate blind spots. May not detect every object and does not warn of moving objects. Always check surroundings and turn to look behind you before moving vehicle. ²Virtual composite 360° view. ³MOD cannot completely eliminate blind spots and may not detect every object. MOD operates at vehicle speeds below 8 km/h (5 mph). Always check surroundings and turn to look behind you before moving vehicle. ⁴Driving is serious business. Only use NissanConnectSM services when safe to do so. Subscription Agreement required. Compatible smartphone required. Not all app features are available for all models. Some apps have late availability. May require dealer service visit or software upgrade to activate. Never program while driving. GPS mapping may not be detailed in all areas or reflect current road status. Cellular network not available in all areas. Cellular network, apps, and services, including Google[®] services, are provided by independent companies not within Nissan's control and may require subscription and owner consent to activate. Should provider terminate/restrict service, service may be terminated without notice or liability to Nissan and/or its agents. Nissan not responsible for any equipment or app replacement/upgrades, or associated costs, that may be required for continued operation. Terms and conditions of Subscription Agreement apply. 36-month trial period starts on vehicle sale date; subsequently a paid subscription is required at the then current rate. Standard text rates and/or data usage may apply. See retailer and check Nissan.ca/NissanConnect for details. ⁵Factory-installed option. Never program while driving. GPS mapping may not be detailed in all areas or reflect current road status. ⁶Use the text messaging feature after stopping your vehicle in a safe location. If you have to use the feature while driving, exercise extreme caution at all times so full attention may be given to vehicle operation. Compatible smartphone required. Standard text rates and/or data usage may apply. ⁷Availability of specific features is dependent upon the phone's Bluetooth[®] support. Please refer to your phone Owner's Manual for details. Bluetooth[®] word mark and logos are owned by Bluetooth SIG, Inc., and any use of such marks by Nissan is under licence. ⁸Driving is serious business and requires your full attention. If you have to use the connected device while driving, exercise extreme caution at all times so full attention may be given to vehicle operation. iPod[®] is a registered trademark of Apple, Inc. All rights reserved. iPod[®] not included. The App Store[®] logo is a registered trademark of Apple, Inc. All rights reserved. Facebook[®] is a registered trademark of Facebook, Inc. Google[®] and the Google[®] Play logo are registered trademarks of Google Inc. The Sirius[®], XM[®] and SiriusXM[®] names and all related marks and logos are trademarks of Sirius XM Radio Inc. TripAdvisor[®] is a registered trademark of TripAdvisor LLC. Twitter[®] is a registered trademark of Twitter, Inc.

nismo[®]



DIAL UP THE STYLE.

Step into **JUKE Nismo**[®] and experience the next-level design born from an illustrious racing heritage. With smoked front combination lights, stiffer competition-tuned suspension, and NISMO[®] Alcantara[®] and leather-wrapped steering wheel, you'll experience what so many others already have: it's not just a performance car, it's a NISMO[®].

Interior Upgrades with NISMO[®] trim

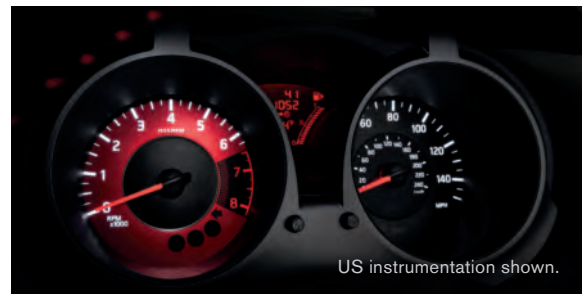
- NISMO[®] red tachometer face
- NISMO[®] sport bucket front seats with embroidered synthetic suede trim and signature red stitching
- NISMO[®] Alcantara[®] and leather-wrapped steering wheel
- NISMO[®] shift knob
- Smoked grey centre console and door trim
- NISMO[®] carpeted floor mats
- Black headliner
- NISMO[®] centre console badge

Competition-inspired Design

- LED Daytime Running Lights
- Red side mirror caps
- Body-colour wheel arches
- Red body striping
- Smoked front combination lights
- Modified front fascia with larger grille
- Resculpted side sills
- Unique body-colour liftgate spoiler
- Rear fascia diffuser

Competition-tuned Handling and Responsiveness

- NISMO[®]-tuned Xtronic CVT[®] with Manual mode featuring seven programmed 'gears' and paddle shifters (AWD CVT)
- Stiffer springs and dampers
- NISMO[®]-tuned vehicle-speed-sensitive electric power steering
- 18" NISMO[®] 10-spoke aluminum-alloy wheels with P225/45R18 summer tires



US instrumentation shown.



nismo[®]
RS

215 HP¹

INTENSELY CHARGED FOR THE SPORT OF DRIVING.

JUKE[®] Nismo[®] RS – the ultimate performance crossover. More horsepower, sharper handling, larger vented disc brakes, a performance transmission, and an overall lower, leaner, meaner attitude.



Interior Features

- Recaro[®] sport bucket front seats with embossed logo and integrated head restraints
- Recaro[®] black synthetic suede centre fabric and red leather bolsters
- Carbon-fibre appearance interior trim
- Synthetic suede stitched instrument panel hood

Performance Upgrades

- NISMO[®]-tuned 1.6-litre Direct Injection Gasoline (DIG[™]) turbo 4-cylinder engine
- Close-ratio 6-speed manual transmission with triple-cone synchros in 1st and 2nd gears (FWD 6MT), or Xtronic CVT[®] with Manual mode featuring eight programmed 'gears' and paddle shifters (AWD CVT)
- NISMO[®]-tuned front helical limited-slip differential (FWD 6MT)
- Torque vectoring All-Wheel Drive (AWD CVT)
- NISMO[®]-tuned exhaust system
- Larger vented front disc brakes, vented rear disc brakes, upgraded brake pads and red brake calipers



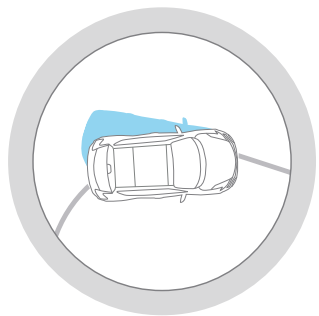
¹Manual transmission models only. 211 HP on CVT models. Alcantara[®] is a registered trademark of Alcantara S.p.A. Corporation. Recaro[®] is a registered trademark of Recaro North America Inc.

NISSAN SAFETY SHIELD® PHILOSOPHY

INNOVATION THAT LOOKS OUT FOR YOU.

What if you had the confidence you need for every part of your drive? The Nissan Safety Shield Technologies™ are a comprehensive approach to safety that guides the engineering and development of every vehicle we make. The features described here are just some of many on your Nissan, helping to protect you and yours by focusing on three key areas: keeping an eye on your vehicle's systems and the surroundings, assisting in handling unexpected situations, and helping to keep you safe in the unfortunate event of an accident.

- 6 Standard Airbags¹
- Tire Pressure Monitoring System²
- Anti-lock Braking System
- RearView Monitor^{3,4}
- Around View® Monitor^{3,4}
- Moving Object Detection (MOD)^{3,5}
- LATCH System (Lower Anchors and Tethers for Children)



Vehicle Dynamic Control (VDC). Also known as stability control, VDC monitors your steering and braking to help you maintain your steered path under certain conditions by reducing engine output and/or applying brake pressure to specific wheels⁶



Traction Control System (TCS). When TCS senses drive-wheel spin, it responds by reducing throttle or applying brake pressure to help maintain traction.



Electronic Brake force Distribution (EBD) and Brake Assist (BA). EBD is designed to send extra force to the rear brakes when there's additional weight in the back. If you need to slam on the brakes, Brake Assist detects how hard you're braking, and if it senses you are in an emergency, it will automatically help to apply maximum braking force.⁷

snuggly kids. Nissan safety engineers have dedicated thousands of hours to evaluating hundreds of child restraints in Nissans. The result: an industry first, The Snug Kids® Child Safety Seat Fit Guide. This guide lists child seats that fit the rear seats of Nissan vehicles, as well as offers invaluable tips on correct installation. Look for the latest Fit Guide at Nissan.ca/owners/en.



CHOOSE YOUR TRIM LEVEL

SV

- 1.6-litre Direct Injection Gasoline (DIG™) turbo 4-cylinder engine
- Torque vectoring All-Wheel Drive (AWD) or Front-Wheel Drive (FWD)
- 6-speed manual transmission or Xtronic CVT® with Manual mode
- 17" 5-split spoke aluminum-alloy wheels
- NissanConnectSM with Mobile Apps, hands-free text messaging assistant, and Bluetooth® Hands-Free Phone System

- Nissan Intelligent Key® with Push Button Ignition
- RearView Monitor^{3,4}
- AM/FM/CD audio system with 127 mm (5.0") colour display with six speakers
- USB connection port for iPod® interface and other compatible devices
- Streaming audio via Bluetooth® wireless technology
- Six standard airbags¹
- Vehicle Dynamic Control (VDC)⁶ with Traction Control System (TCS)



SL

INCLUDES SV EQUIPMENT PLUS:

- Standard Xtronic CVT® with Manual mode
- Fog lights
- Power sliding glass moonroof with one-touch open/close and tilt feature
- Nissan Navigation System with 147 mm (5.8") colour touch-screen monitor
- Voice Recognition for audio and navigation
- Around View® Monitor with Moving Object Detection (MOD)^{3,4,5}

- Leather seating surfaces
- Integrated Control (I-CON) system with drive mode selector
- Automatic Temperature Control (ATC)
- Heated front seats
- Leather-wrapped shift knob
- Rockford Fosgate® ecoPUNCH™ audio system with 8" subwoofer and amplifier, and six upgraded speakers
- SiriusXM® Satellite Radio⁸



NISMO®

INCLUDES SV EQUIPMENT PLUS:

- NISMO®-tuned Xtronic CVT® with Manual mode featuring seven programmed 'gears' and paddle shifters (AWD CVT models)
- NISMO®-tuned suspension with increased spring and dampening rates
- 18" NISMO® 10-spoke aluminum-alloy wheels with P225/45R18 summer tires
- LED Daytime Running Lights
- NISMO® front grille and badging
- NISMO® aerodynamic body kit – front and rear fascias, side sills and rear roof spoiler, body-colour fender lip mouldings, and high-gloss B-pillar finish
- NISMO® red side mirror caps
- NISMO® chrome exhaust finisher

- Nissan Navigation System with 147 mm (5.8") colour touch-screen monitor
- Voice Recognition for audio and navigation
- Around View® Monitor with Moving Object Detection (MOD)^{3,4,5}
- Integrated Control (I-CON) system with drive mode selector
- Automatic Temperature Control (ATC)
- NISMO® red tachometer face
- NISMO® sport bucket front seats with embroidered synthetic suede trim and signature red stitching
- Rockford Fosgate® ecoPUNCH™ audio system with 8" subwoofer and amplifier, and six upgraded speakers
- SiriusXM® Satellite Radio⁸



NISMO® RS

INCLUDES NISMO® EQUIPMENT PLUS:

- NISMO®-tuned 1.6-litre Direct Injection Gasoline (DIG™) turbo 4-cylinder engine with 215 HP and 210 lb-ft of torque (FWD 6MT models)/211 HP and 184 lb-ft of torque (AWD CVT models)
- NISMO®-tuned close-ratio 6-speed manual transmission with triple-cone synchros in 1st and 2nd gears (FWD 6MT models), or NISMO®-tuned Xtronic CVT® with Manual mode featuring eight programmed 'gears' and paddle shifters (AWD CVT models)
- NISMO®-tuned front helical limited-slip differential (FWD 6MT models)

- NISMO®-tuned torque vectoring All-Wheel Drive (AWD CVT models)
- Larger vented front disc brakes, vented rear disc brakes, upgraded brake pads, red brake calipers
- Additional NISMO®-tuned suspension and additional body structure improvements
- NISMO®-tuned exhaust system
- NISMO® RS exterior badging
- Recaro® sport bucket front seats with embossed logo and integrated head restraints, carbon-fibre appearance interior trim, synthetic suede stitched instrument panel hood



¹Airbags are only a supplemental restraint system; always wear your seat belt. Even with the occupant-classification sensor, rear-facing child restraints should not be placed in the front-passenger's seat. Also, in addition to any other requirement of applicable law, all children 12 and under should ride in the rear seat properly secured in child restraints, booster seats, or seat belts according to their size. Airbags will only inflate in certain accidents; see your Owner's Manual for more details. ²TPMS is not a substitute for regular tire pressure checks. ³Available feature. ⁴Parking aid/convenience feature. Cannot completely eliminate blind spots. May not detect every object and does not warn of moving objects. Always check surroundings and turn to look behind you before moving vehicle. ⁵MOD cannot completely eliminate blind spots and may not detect every object. MOD operates at vehicle speeds below 8 km/h (5 mph). Always check surroundings and turn to look behind you before moving vehicle. ⁶VDC, which should remain on when driving except when freeing the vehicle from mud or snow, cannot prevent accidents due to abrupt steering, carelessness, or dangerous driving techniques. ⁷Brake Assist is only an aid to assist the driver and is not a collision warning or avoidance device. It is the driver's responsibility to be in control of the vehicle at all times. ⁸XM® and SiriusXM® Satellite Radio is available in the 10 Canadian provinces and the 48 contiguous United States. Basic monthly subscription required and sold separately after trial period. NavTraffic®/SiriusXM® Traffic is available in select North American markets. In Canada, at time of printing, incident and flow data is available for 12 metropolitan areas of Canada (Vancouver, Calgary, Edmonton, Toronto, Ottawa, Montreal, Quebec City, Hamilton, St. Catharines, Kitchener, Guelph, and London). Subscription sold separately after trial period. All subscriptions subject to customer agreement at siriusxm.ca/terms. Fees and programming subject to change. © 2014 Sirius XM Canada Inc. The Sirius®, XM®, and SiriusXM® names and all related marks and logos are trademarks of Sirius XM Radio Inc. All other trademarks are the property of their respective owners. Alcantara® is a registered trademark of Alcantara S.p.A. Corporation. Bluetooth® word mark and logos are owned by Bluetooth SIG, Inc. and any use of such marks by Nissan is under licence. ecoPUNCH™ is a trademark of Rockford Fosgate. iPod® is a registered trademark of Apple, Inc. All rights reserved. iPod® not included. Recaro® is a registered trademark of Recaro North America Inc. Rockford Fosgate® is a registered trademark of Rockford Corporation.

PAINT AND FABRIC



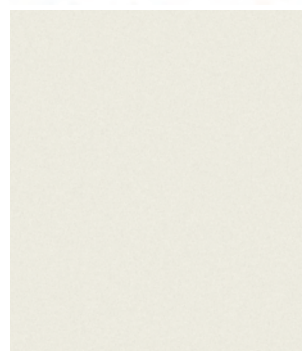
Silver Metallic Centre Console and Door Trim



Red Centre Console and Door Trim



Smoked Grey Centre Console and Door Trim



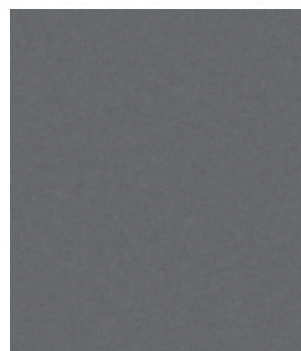
Pearl White¹ QAB



Brilliant Silver K23



Solar Yellow EAV



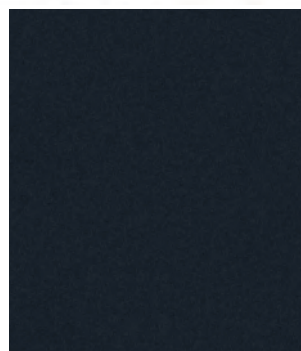
Gun Metallic KAD



Cosmic Blue RBR



Cayenne Red NAH



Super Black KH3

Nissan has taken care to ensure that the digital colour swatches presented here are the closest possible representation of actual vehicle colours. Swatches may vary slightly due to the printing process and whether viewed in daylight, fluorescent or incandescent light. Please see the actual vehicle and colours at your local Nissan dealer.

■ Standard

¹ Extra cost option

	SV	SL	NISMO®	NISMO® RS
PREMIUM BLACK CLOTH W/SILVER TRIM	■			
PREMIUM BLACK/RED CLOTH W/RED TRIM				
BLACK/RED LEATHER W/SILVER TRIM		■		
BLACK/RED LEATHER W/RED TRIM			■	
NISMO® BLACK/RED CLOTH W/SMOKED GREY TRIM				■
RECARO® BLACK/RED LEATHER W/SMOKED GREY TRIM				



SV PREMIUM BLACK CLOTH



SV PREMIUM BLACK/RED CLOTH



SL BLACK/RED LEATHER



NISMO® BLACK/RED CLOTH



NISMO® RS BLACK/RED LEATHER/ SYNTHETIC SUEDE

GENUINE NISSAN ACCESSORIES

Every Genuine Nissan Accessory is: custom-fit, custom-designed and durability-tested; backed by Nissan's 3 year/60,000 km Accessories limited warranty; and can be financed when installed by dealer at time of purchase.²

A. 17" Matte Black Alloy Wheels

Good guys wear black.

B. Illuminated Kick Plates

For a grand entry every time.

C. Cargo Area Protector³

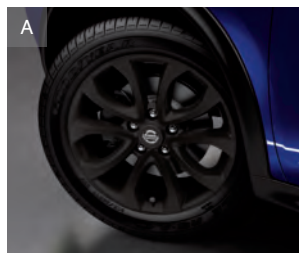
Use your cargo area, don't abuse it.

D. All-season Floor Mats

Neither rain, sleet, nor snow will muck up your JUKE.[®]

Additional Accessories:

- NISMO® Carpeted Floor Mats
- Side-window Deflectors
- Armrest
- Chrome Body Side Mouldings and Chrome Door Handle Accents
- And More



See your Nissan dealer for details, or go to accessories.nissan.ca

BUYING AND OWNING

Finance Options Through Nissan Canada Finance, we offer many attractive lease and purchase options that can be tailored to your individual needs. We have unique programs such as the Nissan Grad Program or the New Canadian Program designed just for you. Please visit our website Nissan.ca/finance to explore all of the options available. We have also made it easy to pre-qualify online. All of our programs come with competitive rates and terms. With our flexible options, driving home a new Nissan has never been easier. Consult your local Nissan Dealership for complete details.

No-Nonsense Warranty Every 2015 Nissan is covered by a 3 year/60,000 km⁴ Comprehensive New Vehicle Warranty, a 5 year/100,000 km⁴ Powertrain Warranty, an 8 year/130,000 km⁴ Emission Control Warranty on selected components, and a 5 year/unlimited km Corrosion Perforation Warranty. As a Nissan owner, you'll also receive a 3 year Roadside Assistance program available to you 24 hours a day. Terms, conditions and exclusions apply. See Warranty Information Booklet for complete details.

²See your Nissan Dealership and read the actual limited warranty. ³Cargo and load capacity limited by weight and distribution. Always secure all cargo. Heavy loading of the vehicle with cargo, especially on the roof, will affect the handling and stability of the vehicle. ⁴Whichever occurs first.

Added Security Plan (ASP) For ultimate peace of mind, consider the Nissan Added Security Plan. It's our commitment to be there for you, and to help you leave your worries behind. Different plans, available for both purchased and leased vehicles, let you tailor the coverage to your driving habits.

Security+Plus™ Prepaid Maintenance Plan The smart choice when it comes to maintaining your new Nissan. Honoured at all participating Nissan Dealers in Canada and the U.S., your vehicle is cared for by factory-trained technicians using Genuine Nissan Parts. And best of all, there's no worrying about price increases on parts or service in the future. A variety of plans are available. Ask your Dealer for details.

NISSAN
FINANCE
nissan.ca/finance

SPECIFICATIONS

Engine	SV	SL	NISMO ^{®1}	NISMO ^{® RS'}
MR16DDT – 1.6-litre Direct Injection Gasoline (DIG™) DOHC				
16-valve turbocharged 4-cylinder engine				
Horsepower – 188 HP @ 5600 rpm				
Torque – 177 lb-ft @ 1600–5200 rpm				
NISMO [®] -tuned MR16DDT – 1.6-litre Direct Injection				
Gasoline (DIG™) DOHC 16-valve turbocharged 4-cylinder engine				
Horsepower – 215 HP @ 6000 rpm (FWD 6MT)				
211 HP @ 6000 rpm (AWD CVT)				
Torque – 210 lb-ft @ 3600–4800 rpm (FWD 6MT)				
184 lb-ft @ 2400–6000 rpm (AWD CVT)				
Emissions – Tier 2, Bin 5				
Continuously Variable Valve Timing Control				
System (CVTCS) on intake and exhaust valves				
Nissan Direct Ignition System with double-tipped iridium spark plugs				
Electronic drive-by-wire throttle				
Engine block heater				

Drivetrain				
Front-Wheel Drive (FWD)				
Torque vectoring All-Wheel Drive (AWD)	<input type="checkbox"/>			<input type="checkbox"/>
6-speed manual transmission (FWD)				
Xtronic CVT [®] (Continuously Variable Transmission) with Manual				
mode (includes paddle shifters on NISMO [®] and NISMO ^{® RS})	<input type="checkbox"/>			<input type="checkbox"/>
NISMO [®] -tuned front helical limited-slip differential (FWD)				

Brakes				
11.7" Front vented disc/11.5" rear disc brakes				
12.6" Front vented disc/11.5" rear vented disc brakes with				
upgraded brake pads				
4-wheel Anti-lock Braking System (ABS)				
Electronic Brake force Distribution (EBD)				
Brake Assist (BA)				

Suspension/Steering				
Independent strut front suspension				
Torsion beam rear suspension (FWD)				
Multi-link independent rear suspension (AWD)	<input type="checkbox"/>			<input type="checkbox"/>
Front and rear stabilizer bars				
Vehicle-speed-sensitive electric power steering				
NISMO [®] -tuned vehicle-speed-sensitive electric power steering				
Additional NISMO [®] -tuned vehicle-speed-sensitive electric				
power steering				
NISMO [®] -tuned suspension with increased spring and				
dampening rates				
Additional NISMO [®] -tuned suspension with increased spring				
and dampening rates				

Wheels/Tires				
17" x 7" 5-split spoke aluminum-alloy wheels				
18" x 7" NISMO [®] 10-spoke aluminum-alloy wheels				
P215/55R17 all-season tires				
P225/45R18 summer tires				

Exterior Features				
Projector halogen low beam headlights				
Smoked front combination lights				
LED Daytime Running Lights				
Fog lights				
NISMO [®] front grille				
NISMO [®] aerodynamic body kit – front and rear fascias,				
side sills and rear roof spoiler				
Body-colour fender lip mouldings				
High-gloss B-pillar finish				

Exterior Features (continued)	SV	SL	NISMO ^{®1}	NISMO ^{® RS'}
Dual power heated outside mirrors				
NISMO [®] red side mirror caps				
NISMO [®] -tuned engine				
Red brake calipers				
NISMO [®] -tuned exhaust system				
NISMO [®] chrome exhaust finisher (100 mm)				
Rear privacy glass				
Power sliding glass moonroof with one-touch open/close				
and tilt feature				
NISMO [®] badging				
NISMO ^{® RS} badging				

Comfort/Convenience				
Nissan Navigation System with 147 mm (5.8") colour				
touch-screen monitor				
Voice Recognition for audio and navigation				
SiriusXM [®] Traffic ²				
NissanConnect SM with Mobile Apps				
Hands-free text messaging assistant				
Bluetooth [®] Hands-Free Phone System ³				
RearView Monitor				
Around View [®] Monitor with Moving Object Detection (MOD)				
Drive computer with outside temperature display				
NISMO [®] red tachometer face				
Integrated Control (I-CON) system with drive mode selector				
Air conditioning				
Automatic Temperature Control (ATC)				
In-cabin microfilter				
Cruise control with illuminated steering wheel-mounted controls				
Power windows with driver's window one-touch auto-up/down				
Power door locks with auto-locking feature				
Nissan Intelligent Key [®] with Push Button Ignition				
Tilt steering column				
Variable intermittent windshield wipers				
Intermittent rear wiper				
Retractable cargo cover				
Height-adjustable front seat belts				
Sun visors with vanity mirrors and extensions				
Front map lights				
12-volt DC power outlet				
Cup holders (two front) and bottle holders (two rear)				
Cargo area under-floor storage (FWD)				

Seating/Appointments				
6-way manual driver's seat				
4-way manual front-passenger's seat				
NISMO [®] sport bucket front seats				
Recaro [®] sport bucket front seats with embossed logo and				
integrated head restraints				
Premium cloth seat trim				
Leather seating surfaces				
NISMO [®] embroidered synthetic suede seat trim				
Recaro [®] black synthetic suede centre fabric and red				
leather bolsters				
NISMO [®] signature red stitching				
Heated front seats				
60/40 Split fold-down rear seats				
Front passenger seatback pocket				
Leather-wrapped steering wheel				
NISMO [®] Alcantara [®] and leather-wrapped steering wheel				
Leather-wrapped shift knob				
NISMO [®] shift knob				

Seating/Appointments (continued)	SV	SL	NISMO ^{®1}	NISMO ^{® RS'}
Painted centre console and door trim accents				
Carpeted floor mats				
NISMO [®] carpeted floor mats				
Carbon-fibre appearance interior trim				
Black headliner				
Synthetic suede stitched instrument panel hood				
NISMO [®] centre console badge				

Audio/Entertainment				
AM/FM/CD audio system with 127 mm (5.0") colour display				
Rockford Fosgate [®] ecoPUNCH™ audio system with				
8" subwoofer and amplifier				
SiriusXM [®] Satellite Radio ²				
Streaming audio via Bluetooth [®] wireless technology ³				
USB connection port for iPod [®] interface and other				
compatible devices				
Auxiliary audio input jack				
Six speakers				
Six upgraded speakers				
MP3/WMA CD playback capability				
Radio Data System (RDS)				
Speed-sensitive volume control				
Illuminated steering wheel-mounted audio controls				

Safety/Security				
Nissan Advanced Airbag System with dual-stage supplemental				
front airbags with seat belt sensors and occupant-				
classification sensor				
Driver and front-passenger seat-mounted side-impact				
supplemental airbags				
Roof-mounted curtain side-impact supplemental airbags for				
front- and rear-seat outboard occupant head protection				
Vehicle Dynamic Control (VDC) with Traction Control System (TCS)				
3-point ALR/ELR passenger seat belt system (ELR for driver)				
Front seat belts with pre-tensioners and load limiters				
Front-seat Active Head Restraints				
LATCH System (Lower Anchors and Tethers for CHildren)				
Energy-absorbing steering column				
High-strength steel side-door guard beams				
Zone Body construction with front and rear crumple zones				
Hood-buckling creases				
Tire Pressure Monitoring System (TPMS)				
Nissan Vehicle Immobilizer System				
Vehicle Security System				

■ Standard

□ Optional

¹Late availability. ²XM[®] and SiriusXM[®] Satellite Radio is available in the 10 Canadian provinces and the 48 contiguous United States. Basic monthly subscription required and sold separately after trial period. NavTraffic[®]/SiriusXM[®] Traffic is available in select North American markets. In Canada, at time of printing, incident and flow data is available for 12 metropolitan areas of Canada (Vancouver, Calgary, Edmonton, Toronto, Ottawa, Montreal, Quebec City, Hamilton, St. Catharines, Kitchener, Guelph, and London). Subscription sold separately after trial period. All subscriptions subject to customer agreement at siriusxm.ca/terms. Fees and programming subject to change. © 2014 Sirius XM Canada Inc. The Sirius[®], XM[®], and SiriusXM[®] names and all related marks and logos are trademarks of Sirius XM Radio Inc. All other trademarks are the property of their respective owners. ³Availability of specific features is dependent upon the phone's Bluetooth[®] support. Please refer to your phone Owner's Manual for details. Bluetooth[®] word mark and logos are owned by Bluetooth SIG, Inc., and any use of such marks by Nissan is under licence. Alcantara[®] is a registered trademark of Alcantara S.p.A. Corporation. iPod[®] is a registered trademark of Apple, Inc. All rights reserved. iPod[®] not included. ecoPUNCH™ is a trademark of Rockford Corporation. Rockford Fosgate[®] is a registered trademark of Rockford Corporation. Recaro[®] is a registered trademark of Recaro North America Inc.

DIMENSIONS/CAPACITIES/WEIGHTS/FUEL

Dimensions – mm (inches)	
Exterior	
Wheelbase	2530 (99.6)
Overall length	4125 (162.4) (SV, SL)
	4160 (163.8) (NISMO [®] , NISMO ^{® RS})
Overall width	1765 (69.5) (SV, SL)
	1770 (69.7) (NISMO [®] , NISMO ^{® RS})
Overall height	1570 (61.8)
Track width (front/rear) – FWD	1525/1525 (60.0/60.0)
Track width (front/rear) – AWD	1525/1505 (60.0/59.3)

Interior (front/rear)	
Head room without moonroof	1007/933 (39.6/36.7)
With moonroof	980/933 (38.6/36.7)
Leg room	1068/815 (42.1/32.1)
Hip room	1308/1229 (51.5/48.4)
Shoulder room	1361/1305 (53.6/51.4)
Step-in height	423/435 (16.7/17.1)

Cargo	
Length	675 (26.6)
Width	1409 (55.5)
Height	681 (26.8)

Capacities	
Seating capacity	5
Interior passenger volume – L (cu. ft.)	2418 (85.4)
Cargo volume – L (cu. ft.)	
With rear seat up	297 (10.5)
With rear seat down	1017 (35.9)
Fuel tank – L (Imp gal) – FWD/AWD	50.0 (11.0)/45.0 (9.9)

Curb Weights – kg (lbs.)				
FWD	SV	SL	NISMO^{®1}	NISMO^{® RS'}
Manual transmission	1324 (2918)	–	–	1344 (2964)
Xtronic CVT [®]	1360 (2998)	–	–	
AWD				
Xtronic CVT [®]	1443 (3181)	1452 (3202)	1460 (3219)	1451 (3198)

2015 Fuel Consumption Estimates – L/100 km (MPG)				
City/Hwy	SV	SL	NISMO^{®1}	NISMO^{® RS'}
FWD				
Manual transmission	8.4 (34)/6.9 (41)	–	–	8.9 (32)/7.5 (38)
Xtronic CVT [®]	8.5 (33)/7.2 (39)	–	–	
AWD				
Xtronic CVT [®]	8.8 (32)/7.5 (38)	8.8 (32)/7.5 (38)	8.8 (32)/7.5 (38)	9.4 (30)/8.1 (35)

Actual mileage may vary with driving conditions – use for comparison only. IMPORTANT: Starting with 2015 model year vehicles, the Government of Canada has mandated new fuel economy test methods to better approximate typical driving conditions and styles. These new 5-cycle test methods are more representative of a vehicle's on road fuel consumption compared to the previous 2-cycle testing methodology, and can produce fuel consumption ratings that are up to 20 percent higher than the previous ratings. Fuel Economy estimates for the Nissan 2015 model year vehicles may seem less favourable compared to previous years and some competing vehicles that have not yet reported based on new testing criteria. 2015 vehicles do not consume more fuel than the comparable 2014 vehicle under the same driving conditions. For more information, please visit nissan.ca/fuel2015

Nissan's environmental action plan focuses on several key areas. Increasing production of Zero Emission vehicles, including the 100% electric LEAF[®]. Improving fuel efficiency through our PUREDRIVE™ measures. And reducing the environmental impact of manufacturing through energy-efficient practices in our plants around the world.



NISSAN
GREEN PROGRAM

NISSAN JUKE®

What if getting behind the wheel could put a smile on your face, confidence in your hands and goose bumps all over? That would be cool. Here are just a few ways Nissan JUKE® gives you an unforgettable drive.

Around View® Monitor. Snag that space, and look like a parallel parking ace while you're at it. With this available feature, JUKE® uses four cameras to give you a virtual 360° view.^{1,2}

Torque Vectoring AWD. Unlike most systems, JUKE®'s available advanced AWD system adjusts power side-to-side on the rear wheels, giving you grin-inducing grip around turns.

Turbo power. JUKE®'s turbocharged Direct Injection Gasoline (DIG™) engine gives you the power of a much larger engine while still producing up to 6.9 L/100 km (41 MPG) highway.³

Looking for more? Visit JUKE® on Facebook® or Twitter® to see what owners have to say. Find walkarounds, product demos and more on YouTube®.

And follow Nissan Canada on:



visit nissan.ca



Innovation
that excites

Cover vehicle shown with Genuine Nissan Accessory Alloy Wheels and JUKE® Colour Studio front bumper accents. ¹Parking aid/convenience feature. Cannot completely eliminate blind spots. May not detect every object and does not warn of moving objects. Always check surroundings and turn to look behind you before moving vehicle. ²Virtual composite 360° view. ³2015 Fuel Consumption Estimate. Actual mileage may vary with driving conditions – use for comparison only. JUKE® FWD with 6MT 6.9 L/100 km (41 MPG) highway. IMPORTANT: Starting with 2015 model year vehicles, the Government of Canada has mandated new fuel economy test methods to better approximate typical driving conditions and styles. These new 5-cycle test methods are more representative of a vehicle's on road fuel consumption compared to the previous 2-cycle testing methodology, and can produce fuel consumption ratings that are up to 20 percent higher than the previous ratings. Fuel Economy estimates for the Nissan 2015 model year vehicles may seem less favourable compared to previous years and some competing vehicles that have not yet reported based on new testing criteria. 2015 vehicles do not consume more fuel than the comparable 2014 vehicle under the same driving conditions. For more information, please visit nissan.ca/fuel2015. Facebook® is a registered trademark of Facebook, Inc. Twitter® is a registered product of Twitter, Inc. YouTube® is a registered trademark of Google Inc.

All illustrations, photographs and specifications in this brochure are based on the latest product information. See actual vehicle for complete accuracy. Nissan Canada Inc. reserves the right to make changes at any time, without notice, in prices, colours, materials, equipment, specifications and models, and to discontinue models or equipment. For information on additional options and accessories, contact your Nissan Dealership. Registered trademarks are property of their respective owners.

At nissan.ca, you'll find a way to "build your own Nissan," a dealer locator, and more information about key Nissan support services. The Nissan names, logos, product names, feature names, and slogans are trademarks owned by or licenced to Nissan Motor Co. Ltd. and/or its North American subsidiaries. **Always wear your seat belt, and please don't drink and drive.** Printed in December 2014. Catalogue number: 99999-JUK15EN. © 2014 Nissan Canada Inc. All rights reserved.