



MAXIMA®

2023





## The 4-Door Sports Car

Welcome to exhilaration. A high-tech powerhouse that changes from premium ride to canyon carver at the touch of a button. Loaded with advanced driver assist features<sup>1</sup> and seamless connectivity with your compatible smartphone.<sup>2</sup> This is what it's like to drive a living legend.



Genuine stitching on dashboard, doors, and console

178 mm (7") Advanced Drive-Assist Display<sup>3</sup>

203 mm (8") touch-screen display<sup>4</sup>

7-degree centre console rotation

Premium Ascot leather-wrapped D-shaped steering wheel<sup>6</sup>

Display Commander

Drive Mode Selector

Climate-controlled front seats<sup>6</sup>

## Unlimited engagement

Maxima<sup>®</sup> connects you to your drive like no other. Rotating the centre console towards the driver gives you an easy reach to key controls. The standard Advanced Drive-Assist Display serves up information at a glance.<sup>3</sup> Nissan Door to Door Navigation with Premium Traffic and smartphone connectivity put your world at your fingertips.<sup>2,5</sup> No detail was overlooked — the ergonomically designed shift lever, Display Commander, and Drive Mode Selector are all grouped together to fall readily to hand.



### Customized performance

With legendary VQ V6 power under your right foot and an Xtronic CVT® (Continuously Variable Transmission) to keep you in the meat of the powerband, Maxima® is a driver's dream come true. And with the standard Drive Mode Selector, you can switch between sport sedan and luxurious cruiser at the touch of a button.



Nissan Maxima® SR shown in Charcoal Premium Ascot Leather with Alcantara® inserts.<sup>7</sup> U.S. instrumentation shown.

### Pure ambiance

Technically, the term is "wow." There's no better way to describe it — the perfect expression of driving exhilaration with elegance and style.

- Zero Gravity front seats<sup>8</sup>
- Climate-controlled front seats<sup>6</sup>
- Ambient LED lighting

### Android Auto™

Talk to Google on Android Auto and get things done with your voice. Easily send messages, get directions, control media, and more. Just say, "Hey Google" or, in compatible cars, long-press the voice control button on your steering wheel to get started.<sup>2,5,9,10</sup>



U.S. instrumentation shown.

### It's even a quick read

**Nissan Advanced Drive-Assist Display** Maxima helps you focus on what's most important: driving. From turn-by-turn directions<sup>5</sup> to caller ID — even Intelligent Driver Alertness<sup>11</sup> that warns you if it senses you need a break — the 178 mm (7") Advanced Drive-Assist Display lays it all right before your eyes. You can even change the colour of the Maxima on the display to match your tastes.<sup>3</sup>

### Remote start from your phone

With NissanConnect® Services, you can remotely start your vehicle from nearly anywhere your compatible smartphone works. Need to unlock your vehicle for a friend? Just tap the unlock button on your phone. You can even find your parked vehicle's location. Now that's technology built for you.<sup>9</sup>



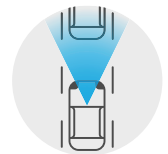
### Apple CarPlay® integration

People to see? Places to be? Just ask Siri.® Equipped with Siri® voice control, Apple CarPlay® (shown above) brings on board to your Maxima your contacts, favourite audio apps, Apple Maps, and more. You can even use your steering wheel controls to adjust volume and toggle through screens. Simply plug in your compatible iPhone® and go.<sup>2,5,9,10</sup>



### Standard Nissan Safety Shield® 360

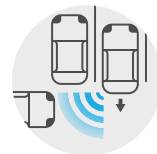
Imagine being surrounded by confidence on every drive. Part of Nissan Intelligent Mobility™ Safety Shield 360 includes features that monitor in front of you, behind you, and on either side and can step in to help keep you safe. The following features come standard on every 2023 Nissan Maxima.<sup>6,11,12</sup>



INTELLIGENT EMERGENCY BRAKING WITH PEDESTRIAN DETECTION<sup>13</sup>



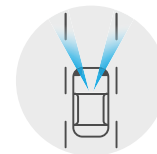
REAR AUTOMATIC BRAKING<sup>14</sup>



REAR CROSS TRAFFIC ALERT<sup>15</sup>



BLIND SPOT WARNING<sup>16</sup>



LANE DEPARTURE WARNING<sup>17</sup>



HIGH BEAM ASSIST

### See and sense more around you

**Intelligent Cruise Control** Watches the flow of traffic to take the tedium out of your daily commute. The system helps maintain an adjustable speed and set distance between you and the car ahead.<sup>20</sup>



**Intelligent Forward Collision Warning** Maxima is on the lookout when you can't see what's going on up there. Intelligent Forward Collision Warning watches up to two cars ahead, and when it detects sudden deceleration in front of you, it gives you a warning to slow down.<sup>21</sup>



**Intelligent Around View® Monitor** Four cameras make parking easy with a virtual composite 360° bird's-eye view of your Maxima. You can select from split-screen close-ups of the front, rear, and curbside views for a better look. It also gives you an on-screen heads-up when it detects moving objects near your vehicle.<sup>6,18,19</sup>

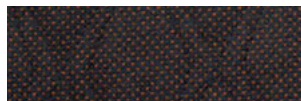
**Intelligent Lane Intervention** Maxima helps keep you in your lane. When lane markings are clear, Intelligent Lane Intervention can detect if you're straying out of your lane and can tap the brakes to help gently guide you back.<sup>6,17</sup>



## CHOOSE YOUR COLOUR AND INTERIOR



Charcoal Leather<sup>7</sup> | SL



Charcoal Premium Ascot Leather with Alcantara<sup>®</sup> Inserts<sup>7</sup> | SR

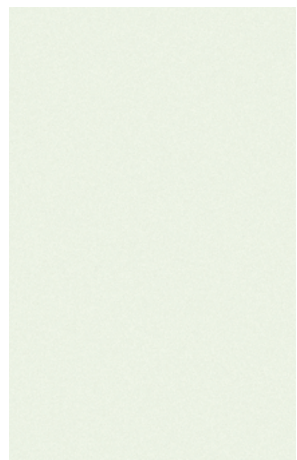


Charcoal Premium Ascot Leather<sup>7</sup> | Platinum



Cashmere Premium Ascot Leather<sup>7</sup> | Platinum

Charcoal Leather <sup>7</sup>	SL	SR	PLT
Charcoal Premium Ascot Leather with Alcantara <sup>®</sup> Inserts <sup>7</sup>			
Charcoal Premium Ascot Leather <sup>7</sup>			
Cashmere Premium Ascot Leather <sup>7</sup>			



Pearl White TriCoat<sup>22</sup> QAB



Gun Metallic<sup>22</sup> KAD

	SL	SR	PLT



Scarlet Ember Tintcoat<sup>22</sup> NBL



Deep Blue Pearl<sup>22</sup> RAY



Super Black KH3

	SL	SR	PLT		SL	SR	PLT		SL	SR	PLT

■ Standard

Nissan has taken care to ensure that the digital colour swatches presented here are the closest possible representation of actual vehicle colours. Swatches may vary slightly due to viewing light or screen quality. Please see the actual vehicle and colours at your dealer.

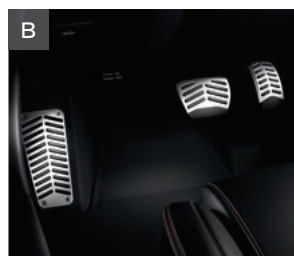
## GENUINE NISSAN ACCESSORIES

Every Genuine Nissan Accessory is custom-fit, custom-designed, and durability-tested. Each one is backed by Nissan's 3-year/60,000-km (whichever occurs first) limited warranty (if installed by dealer at the time of new vehicle purchase) and can be financed when installed by dealer at time of new vehicle purchase. Terms, conditions, and exclusions apply. See your Warranty Information Booklet for complete details.

- A. **Rear Diffuser**  
Go with the flow. Add a stylish touch.
- B. **Sport Pedals**  
Track-inspired grip and looks.
- C. **18" Machined / Painted 2-Tone Wheels w/ Center Cap**  
Sleek styling, exclusively for Maxima.<sup>®</sup>
- D. **All-Season Floor Mats (4-piece set), Sport Carpeted Floor Mats, and Carpeted Floor Mats (4-piece set)**  
Skip the mud and other messes. (Sold separately)

### Additional Accessories:

- Rocker Panel Mouldings
- Illuminated Kick Plates
- Shift Knob
- Interior Accent Lighting
- Interior Trim Appliqués
- Sliding Trunk Organizer Tray
- All-Season Trunk Area Protector
- Premium Rear Spoiler
- And More



See your Nissan dealer for details, or go to [accessories.nissan.ca](https://accessories.nissan.ca)

## BUYING AND OWNING

**Finance Options** Through Nissan Canada Finance, we offer many attractive lease and loan options that can be tailored to your individual needs. Please visit our website [Nissan.ca/finance](https://nissan.ca/finance) to explore all of the options available. We have also made it easy to pre-qualify online. With our flexible options, driving home a new Nissan has never been easier. Consult your local Nissan Dealership for complete details.

**No-Nonsense Warranty** Every 2023 Nissan is covered by a 3 year/60,000 km<sup>23</sup> Comprehensive New Vehicle Warranty, a 5 year/100,000 km<sup>23</sup> Powertrain Warranty, an 8 year/130,000 km<sup>23</sup> Emission OBD Warranty on selected components, and a 5 year/unlimited km Corrosion Perforation Warranty. As a Nissan owner, you'll also receive a 3 year Roadside Assistance program available to you 24 hours a day. Terms, conditions, and exclusions apply. See your Warranty Information Booklet for complete details.

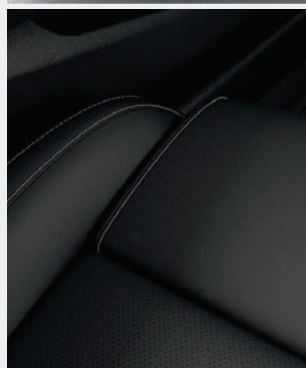
**Added Security Plan (ASP)** For ultimate peace of mind, consider the Nissan Added Security Plan. It's our commitment to be there for you, and to help you leave your worries behind. Different plans, available for both purchased and leased vehicles, let you tailor the coverage to your driving habits.

**Security+Plus<sup>®</sup> Prepaid Maintenance Plan** The smart choice when it comes to maintaining your new Nissan. Honoured at all participating Nissan Dealers in Canada and the U.S., your vehicle is cared for by factory-trained technicians using Genuine Nissan Parts. And best of all, there's no worrying about price increases on parts or service in the future. A variety of plans are available. Ask your Dealer for details.

## CHOOSE YOUR TRIM LEVEL

### SL

- 3.5-litre V6 engine with 300 HP and 261 lb.-ft. of torque<sup>24</sup>
- Xtronic CVT® (Continuously Variable Transmission)
- Drive Mode Selector with Sport and Normal Modes
- Intelligent Cruise Control<sup>20</sup>
- Intelligent Forward Collision Warning<sup>21</sup>
- Intelligent Emergency Braking with Pedestrian Detection<sup>13</sup>
- Rear Automatic Braking<sup>14</sup>
- Lane Departure Warning<sup>17</sup>
- Blind Spot Warning<sup>16</sup>
- Rear Cross Traffic Alert<sup>15</sup>
- RearView Monitor<sup>25</sup>
- Front and Rear Sonar System<sup>26</sup>
- Integrated Dynamics-control Module — Active Ride Control, Intelligent Trace Control,<sup>27</sup> and Intelligent Engine Brake
- High Beam Assist
- Traffic Sign Recognition<sup>28</sup>
- Intelligent Driver Alertness<sup>11</sup>
- 18" Machine-finished aluminum-alloy wheels
- LED headlights with LED signature Daytime Running Lights
- Taillights with integrated LED signature
- Intelligent Auto Headlights
- Splash guards
- Quad-tipped exhaust finishers
- Power heated outside mirrors with LED turn signal indicators
- Dual Panel Panoramic Moonroof with one-touch open/close
- Dual Zone Automatic Temperature Control with in-cabin microfilter and rear vents
- HomeLink® universal garage-door opener
- Auto-dimming inside rearview mirror
- Nissan Intelligent Key® with Push Button Ignition
- Rear Door Alert<sup>29</sup>
- Power windows with front window one-touch auto-up/down
- Tilt/telescoping steering column
- Vehicle-speed-sensing variable intermittent windshield wipers
- Front LED map lights and rear LED reading lights
- Adjustable ambient LED interior lighting
- Dual illuminated visor vanity mirrors with sun visor extenders
- 12-volt DC power outlet<sup>2</sup>
- Retained accessory power and battery saver
- Overhead sunglasses storage
- Front seatback pockets
- Dual front cup holders and dual front bottle holders
- Rear-seat fold-down armrest with dual cup holders
- Remote Engine Start System<sup>30</sup> with Intelligent Climate Control
- 8-way power driver's seat with power lumbar support
- 4-way power front-passenger's seat
- Front-passenger's seat power lifter
- Heated front and rear outboard seats
- Heated leather-wrapped steering wheel
- Leather-wrapped shift knob
- 60/40-split fold-down rear seatbacks
- Leather-appointed seats
- Carpeted floor mats
- Advanced Drive-Assist Display with 178 mm (7") display<sup>3</sup>
- NissanConnect® 203 mm (8") touch-screen display<sup>4</sup>
- Nissan Door to Door Navigation with Premium Traffic<sup>5</sup>
- NissanConnect® Services powered by SiriusXM with trial access to 5-year Plus and 6-month Premium packages<sup>9</sup>
- NissanConnect® with Wi-Fi Hotspot<sup>9</sup>
- Apple CarPlay® integration<sup>9</sup>
- Android Auto™ compatibility<sup>9</sup>
- SiriusXM Traffic and Travel Link with 3-month trial access<sup>31</sup>
- Bluetooth® Hands Free Phone System<sup>32</sup>
- Hands-free Text Messaging Assistant<sup>10</sup>
- Display Commander
- Bose Premium Audio System with 11 speakers, including Bose Centerpoint® 2 Surround Technology
- Active Noise Cancellation
- Two USB-A ports and two USB-C ports<sup>2</sup>
- SiriusXM Radio with 3-month trial access<sup>31</sup>
- Streaming Audio via Bluetooth®<sup>32</sup>



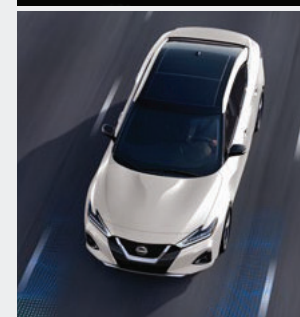
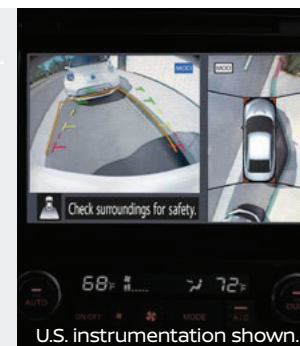
### SR INCLUDES SL EQUIPMENT PLUS:

- Paddle shifters
- Sport-tuned suspension
- Intelligent Lane Intervention<sup>17</sup>
- Intelligent Around View® Monitor<sup>18</sup>
- 19" Gloss black aluminum-alloy wheels
- LED fog lights
- Black V-Motion grille
- Black exterior accents
- Sport spoiler
- Outside mirrors with reverse tilt-down feature
- Auto-dimming driver-side outside mirror
- Memory System — driver's seat and outside mirrors
- Driver's seat manual thigh support extension
- Climate-controlled front seats (heated and cooled)
- Premium Ascot leather-appointed seats with dynamic diamond-quilted Alcantara® inserts
- Premium Ascot leather-wrapped steering wheel with Alcantara® inserts
- Satin Dark Chrome faceted interior trim
- Charcoal headliner
- Aluminum sport pedals
- Active Sound Enhancement



### PLATINUM INCLUDES SL EQUIPMENT PLUS:

- Intelligent Lane Intervention<sup>17</sup>
- Intelligent Around View® Monitor<sup>18</sup>
- 19" Machine-finished aluminum-alloy wheels
- LED fog lights
- Outside mirrors with reverse tilt-down feature
- Auto-dimming driver-side outside mirror
- Power-tilt/telescoping steering column
- Rain-sensing variable intermittent windshield wipers
- Rear-window power sunshade
- Memory System — driver's seat, steering wheel, and outside mirrors
- Driver's seat manual thigh support extension
- Climate-controlled front seats (heated and cooled)
- Premium Ascot leather-appointed seats with diamond-quilted leather inserts
- Premium Ascot leather-wrapped steering wheel
- Satin Birdseye Maple Wood faceted interior trim



## SPECIFICATIONS

Engine	SL	SR	PLT
3.5-litre DOHC 24-valve V6 engine	<input type="checkbox"/>	<input type="checkbox"/>	<input type="checkbox"/>
— Horsepower — 300 HP @ 6,400 rpm <sup>24</sup>	<input type="checkbox"/>	<input type="checkbox"/>	<input type="checkbox"/>
— Torque — 261 lb.-ft. @ 4,400 rpm <sup>24</sup>	<input type="checkbox"/>	<input type="checkbox"/>	<input type="checkbox"/>
Continuously Variable Valve Timing Control System (CVTCS) on intake and exhaust valves	<input type="checkbox"/>	<input type="checkbox"/>	<input type="checkbox"/>
Nissan Direct Ignition System	<input type="checkbox"/>	<input type="checkbox"/>	<input type="checkbox"/>
Electronic drive-by-wire throttle	<input type="checkbox"/>	<input type="checkbox"/>	<input type="checkbox"/>

Drivetrain	SL	SR	PLT
Front engine/Front-Wheel Drive	<input type="checkbox"/>	<input type="checkbox"/>	<input type="checkbox"/>
Xtronic CVT® (Continuously Variable Transmission) with Drive Mode Selector and Manual Mode	<input type="checkbox"/>	<input type="checkbox"/>	<input type="checkbox"/>
Paddle shifters	<input type="checkbox"/>	<input type="checkbox"/>	<input type="checkbox"/>

Brakes	SL	SR	PLT
Front and rear vented discs	<input type="checkbox"/>	<input type="checkbox"/>	<input type="checkbox"/>
4-wheel Anti-lock Braking System (ABS)	<input type="checkbox"/>	<input type="checkbox"/>	<input type="checkbox"/>
Electronic Brake force Distribution (EBD)	<input type="checkbox"/>	<input type="checkbox"/>	<input type="checkbox"/>
Brake Assist <sup>33</sup>	<input type="checkbox"/>	<input type="checkbox"/>	<input type="checkbox"/>

Suspension/Chassis Bracing/Steering	SL	SR	PLT
Independent strut front suspension	<input type="checkbox"/>	<input type="checkbox"/>	<input type="checkbox"/>
Independent multi-link rear suspension	<input type="checkbox"/>	<input type="checkbox"/>	<input type="checkbox"/>
Hollow-tube front and rear stabilizer bar	<input type="checkbox"/>	<input type="checkbox"/>	<input type="checkbox"/>
Sport-tuned suspension — retuned dampers, stiffer springs, and larger front stabilizer bar	<input type="checkbox"/>	<input type="checkbox"/>	<input type="checkbox"/>
Front strut tower and rear chassis reinforcement	<input type="checkbox"/>	<input type="checkbox"/>	<input type="checkbox"/>
Hydro-electric power steering	<input type="checkbox"/>	<input type="checkbox"/>	<input type="checkbox"/>

Driver Assistance Technologies	SL	SR	PLT
Intelligent Cruise Control <sup>20</sup>	<input type="checkbox"/>	<input type="checkbox"/>	<input type="checkbox"/>
Intelligent Forward Collision Warning <sup>21</sup>	<input type="checkbox"/>	<input type="checkbox"/>	<input type="checkbox"/>
Intelligent Emergency Braking with Pedestrian Detection <sup>13</sup>	<input type="checkbox"/>	<input type="checkbox"/>	<input type="checkbox"/>
Rear Automatic Braking <sup>14</sup>	<input type="checkbox"/>	<input type="checkbox"/>	<input type="checkbox"/>
Lane Departure Warning <sup>17</sup>	<input type="checkbox"/>	<input type="checkbox"/>	<input type="checkbox"/>
Intelligent Lane Intervention <sup>17</sup>	<input type="checkbox"/>	<input type="checkbox"/>	<input type="checkbox"/>
Blind Spot Warning <sup>16</sup>	<input type="checkbox"/>	<input type="checkbox"/>	<input type="checkbox"/>
Rear Cross Traffic Alert <sup>15</sup>	<input type="checkbox"/>	<input type="checkbox"/>	<input type="checkbox"/>
RearView Monitor <sup>25</sup>	<input type="checkbox"/>	<input type="checkbox"/>	<input type="checkbox"/>
Intelligent Around View® Monitor <sup>18</sup>	<input type="checkbox"/>	<input type="checkbox"/>	<input type="checkbox"/>
Front and Rear Sonar System <sup>26</sup>	<input type="checkbox"/>	<input type="checkbox"/>	<input type="checkbox"/>
Vehicle Dynamic Control® (VDC) <sup>34</sup> with Traction Control System (TCS)	<input type="checkbox"/>	<input type="checkbox"/>	<input type="checkbox"/>
Integrated Dynamics-control Module — Active Ride Control, Intelligent Trace Control, <sup>27</sup> Intelligent Engine Brake	<input type="checkbox"/>	<input type="checkbox"/>	<input type="checkbox"/>
High Beam Assist	<input type="checkbox"/>	<input type="checkbox"/>	<input type="checkbox"/>
Traffic Sign Recognition <sup>28</sup>	<input type="checkbox"/>	<input type="checkbox"/>	<input type="checkbox"/>
Intelligent Driver Alertness <sup>31</sup>	<input type="checkbox"/>	<input type="checkbox"/>	<input type="checkbox"/>

Wheels/Tires	SL	SR	PLT
18" Machine-finished aluminum-alloy wheels	<input type="checkbox"/>	<input type="checkbox"/>	<input type="checkbox"/>
19" Gloss black aluminum-alloy wheels	<input type="checkbox"/>	<input type="checkbox"/>	<input type="checkbox"/>
19" Machine-finished aluminum-alloy wheels	<input type="checkbox"/>	<input type="checkbox"/>	<input type="checkbox"/>
P245/45R18 V-rated all-season tires	<input type="checkbox"/>	<input type="checkbox"/>	<input type="checkbox"/>
P245/40R19 W-rated all-season tires	<input type="checkbox"/>	<input type="checkbox"/>	<input type="checkbox"/>

Exterior Features	SL	SR	PLT
LED headlights with LED signature Daytime Running Lights	<input type="checkbox"/>	<input type="checkbox"/>	<input type="checkbox"/>
LED fog lights	<input type="checkbox"/>	<input type="checkbox"/>	<input type="checkbox"/>

Exterior Features (continued)	SL	SR	PLT
Taillights with integrated LED signature	<input type="checkbox"/>	<input type="checkbox"/>	<input type="checkbox"/>
Intelligent Auto Headlights	<input type="checkbox"/>	<input type="checkbox"/>	<input type="checkbox"/>
Black V-Motion grille	<input type="checkbox"/>	<input type="checkbox"/>	<input type="checkbox"/>
Black exterior accents	<input type="checkbox"/>	<input type="checkbox"/>	<input type="checkbox"/>
Sport spoiler	<input type="checkbox"/>	<input type="checkbox"/>	<input type="checkbox"/>
Splash guards	<input type="checkbox"/>	<input type="checkbox"/>	<input type="checkbox"/>
Quad-tipped exhaust finishers	<input type="checkbox"/>	<input type="checkbox"/>	<input type="checkbox"/>
Power heated outside mirrors with LED turn signal indicators	<input type="checkbox"/>	<input type="checkbox"/>	<input type="checkbox"/>
Outside mirrors with reverse tilt-down feature	<input type="checkbox"/>	<input type="checkbox"/>	<input type="checkbox"/>
Auto-dimming driver-side outside mirror	<input type="checkbox"/>	<input type="checkbox"/>	<input type="checkbox"/>
Dual Panel Panoramic Moonroof with one-touch open/close	<input type="checkbox"/>	<input type="checkbox"/>	<input type="checkbox"/>

Comfort/Convenience	SL	SR	PLT
Dual Zone Automatic Temperature Control with in-cabin microfilter and rear vents	<input type="checkbox"/>	<input type="checkbox"/>	<input type="checkbox"/>
HomeLink® universal garage-door opener	<input type="checkbox"/>	<input type="checkbox"/>	<input type="checkbox"/>
Auto-dimming inside rearview mirror	<input type="checkbox"/>	<input type="checkbox"/>	<input type="checkbox"/>
Nissan Intelligent Key® with Push Button Ignition	<input type="checkbox"/>	<input type="checkbox"/>	<input type="checkbox"/>
Remote Engine Start System <sup>30</sup> with Intelligent Climate Control	<input type="checkbox"/>	<input type="checkbox"/>	<input type="checkbox"/>
Remote front windows down and trunk release via Nissan Intelligent Key®	<input type="checkbox"/>	<input type="checkbox"/>	<input type="checkbox"/>
Power door locks with auto-locking feature	<input type="checkbox"/>	<input type="checkbox"/>	<input type="checkbox"/>
Rear Door Alert <sup>29</sup>	<input type="checkbox"/>	<input type="checkbox"/>	<input type="checkbox"/>
Power windows with front window one-touch auto-up/down	<input type="checkbox"/>	<input type="checkbox"/>	<input type="checkbox"/>
Tilt/telescoping steering column	<input type="checkbox"/>	<input type="checkbox"/>	<input type="checkbox"/>
Power-tilt/telescoping steering column	<input type="checkbox"/>	<input type="checkbox"/>	<input type="checkbox"/>
Vehicle-speed-sensing variable intermittent windshield wipers	<input type="checkbox"/>	<input type="checkbox"/>	<input type="checkbox"/>
Rain-sensing variable intermittent windshield wipers	<input type="checkbox"/>	<input type="checkbox"/>	<input type="checkbox"/>
Front LED map lights and rear LED reading lights	<input type="checkbox"/>	<input type="checkbox"/>	<input type="checkbox"/>
Adjustable ambient LED interior lighting	<input type="checkbox"/>	<input type="checkbox"/>	<input type="checkbox"/>
Dual illuminated visor vanity mirrors with sun visor extenders	<input type="checkbox"/>	<input type="checkbox"/>	<input type="checkbox"/>
Rear-window power sunshade	<input type="checkbox"/>	<input type="checkbox"/>	<input type="checkbox"/>
12-volt DC power outlet <sup>2</sup>	<input type="checkbox"/>	<input type="checkbox"/>	<input type="checkbox"/>
Retained accessory power and battery saver	<input type="checkbox"/>	<input type="checkbox"/>	<input type="checkbox"/>
Overhead sunglasses storage	<input type="checkbox"/>	<input type="checkbox"/>	<input type="checkbox"/>
Front seatback pockets	<input type="checkbox"/>	<input type="checkbox"/>	<input type="checkbox"/>
Dual front cup holders and dual front bottle holders	<input type="checkbox"/>	<input type="checkbox"/>	<input type="checkbox"/>
Rear-seat fold-down armrest with dual cup holders	<input type="checkbox"/>	<input type="checkbox"/>	<input type="checkbox"/>

Seating/Appointments	SL	SR	PLT
8-way power driver's seat with power lumbar support	<input type="checkbox"/>	<input type="checkbox"/>	<input type="checkbox"/>
4-way power front-passenger's seat	<input type="checkbox"/>	<input type="checkbox"/>	<input type="checkbox"/>
Memory System — driver's seat and outside mirrors	<input type="checkbox"/>	<input type="checkbox"/>	<input type="checkbox"/>
Memory System — driver's seat, steering wheel, and outside mirrors	<input type="checkbox"/>	<input type="checkbox"/>	<input type="checkbox"/>
Driver's seat manual thigh support extension	<input type="checkbox"/>	<input type="checkbox"/>	<input type="checkbox"/>
Front-passenger's seat power lifter	<input type="checkbox"/>	<input type="checkbox"/>	<input type="checkbox"/>
Heated front seats	<input type="checkbox"/>	<input type="checkbox"/>	<input type="checkbox"/>
Climate-controlled front seats (heated and cooled)	<input type="checkbox"/>	<input type="checkbox"/>	<input type="checkbox"/>
Heated rear seats <sup>35</sup>	<input type="checkbox"/>	<input type="checkbox"/>	<input type="checkbox"/>
Heated steering wheel	<input type="checkbox"/>	<input type="checkbox"/>	<input type="checkbox"/>
60/40-split fold-down rear seatbacks	<input type="checkbox"/>	<input type="checkbox"/>	<input type="checkbox"/>
Leather-appointed seats	<input type="checkbox"/>	<input type="checkbox"/>	<input type="checkbox"/>
Premium Ascot leather-appointed seats with dynamic diamond-quilted Alcantara® inserts	<input type="checkbox"/>	<input type="checkbox"/>	<input type="checkbox"/>
Premium Ascot leather-appointed seats with diamond-quilted leather inserts	<input type="checkbox"/>	<input type="checkbox"/>	<input type="checkbox"/>
Leather-wrapped steering wheel	<input type="checkbox"/>	<input type="checkbox"/>	<input type="checkbox"/>

Seating/Appointments (continued)	SL	SR	PLT
Premium Ascot leather-wrapped steering wheel with Alcantara® inserts	<input type="checkbox"/>	<input type="checkbox"/>	<input type="checkbox"/>
Premium Ascot leather-wrapped steering wheel	<input type="checkbox"/>	<input type="checkbox"/>	<input type="checkbox"/>
Leather-wrapped shift knob	<input type="checkbox"/>	<input type="checkbox"/>	<input type="checkbox"/>
Satin Chrome faceted trim	<input type="checkbox"/>	<input type="checkbox"/>	<input type="checkbox"/>
Satin Dark Chrome faceted trim	<input type="checkbox"/>	<input type="checkbox"/>	<input type="checkbox"/>
Satin Birdseye Maple Wood faceted trim	<input type="checkbox"/>	<input type="checkbox"/>	<input type="checkbox"/>
Charcoal headliner and pillars	<input type="checkbox"/>	<input type="checkbox"/>	<input type="checkbox"/>
Aluminum sport pedals	<input type="checkbox"/>	<input type="checkbox"/>	<input type="checkbox"/>
Carpeted floor mats	<input type="checkbox"/>	<input type="checkbox"/>	<input type="checkbox"/>

Infotainment	SL	SR	PLT
Advanced Drive-Assist Display with 178 mm (7") display <sup>3</sup>	<input type="checkbox"/>	<input type="checkbox"/>	<input type="checkbox"/>
NissanConnect® 203 mm (8") touch-screen display <sup>4</sup>	<input type="checkbox"/>	<input type="checkbox"/>	<input type="checkbox"/>
Nissan Door to Door Navigation System with Premium Traffic <sup>5</sup>	<input type="checkbox"/>	<input type="checkbox"/>	<input type="checkbox"/>
NissanConnect® Services powered by SiriusXM with trial access to 5-year Plus and 6-month Premium packages <sup>9</sup>	<input type="checkbox"/>	<input type="checkbox"/>	<input type="checkbox"/>
NissanConnect® with Wi-Fi Hotspot <sup>9</sup>	<input type="checkbox"/>	<input type="checkbox"/>	<input type="checkbox"/>
Apple CarPlay® integration <sup>9</sup>	<input type="checkbox"/>	<input type="checkbox"/>	<input type="checkbox"/>
Android Auto™ compatibility <sup>9</sup>	<input type="checkbox"/>	<input type="checkbox"/>	<input type="checkbox"/>
SiriusXM Traffic and Travel Link with 3-month trial access <sup>31</sup>	<input type="checkbox"/>	<input type="checkbox"/>	<input type="checkbox"/>
Bluetooth® Hands Free Phone System <sup>32</sup>	<input type="checkbox"/>	<input type="checkbox"/>	<input type="checkbox"/>
Hands-free Text Messaging Assistant <sup>10</sup>	<input type="checkbox"/>	<input type="checkbox"/>	<input type="checkbox"/>
Display Commander	<input type="checkbox"/>	<input type="checkbox"/>	<input type="checkbox"/>
Bose Premium Audio System with 11 speakers, including Bose Centerpoint® 2 Surround Technology	<input type="checkbox"/>	<input type="checkbox"/>	<input type="checkbox"/>
Active Noise Cancellation	<input type="checkbox"/>	<input type="checkbox"/>	<input type="checkbox"/>
Active Sound Enhancement	<input type="checkbox"/>	<input type="checkbox"/>	<input type="checkbox"/>
MP3/WMA CD playback capability	<input type="checkbox"/>	<input type="checkbox"/>	<input type="checkbox"/>
Auxiliary audio input jack <sup>2</sup>	<input type="checkbox"/>	<input type="checkbox"/>	<input type="checkbox"/>
Two USB-A ports and two USB-C ports <sup>2</sup>	<input type="checkbox"/>	<input type="checkbox"/>	<input type="checkbox"/>
SiriusXM Radio with 3-month trial access <sup>31</sup>	<input type="checkbox"/>	<input type="checkbox"/>	<input type="checkbox"/>
Streaming Audio via Bluetooth® <sup>32</sup>	<input type="checkbox"/>	<input type="checkbox"/>	<input type="checkbox"/>
Radio Data System (RDS) and speed-sensitive volume control	<input type="checkbox"/>	<input type="checkbox"/>	<input type="checkbox"/>
Illuminated steering wheel-mounted audio controls	<input type="checkbox"/>	<input type="checkbox"/>	<input type="checkbox"/>

Safety/Security	SL	SR	PLT
Nissan Advanced Airbag System with supplemental front airbags with seat belt and occupant classification sensors <sup>36</sup>	<input type="checkbox"/>	<input type="checkbox"/>	<input type="checkbox"/>
Seat-mounted side-impact supplemental airbags for front- and rear-seat outboard occupants <sup>36</sup>	<input type="checkbox"/>	<input type="checkbox"/>	<input type="checkbox"/>
Driver and front-passenger supplemental knee airbags <sup>36</sup>	<input type="checkbox"/>	<input type="checkbox"/>	<input type="checkbox"/>
Roof-mounted curtain supplemental airbags for side-impact and rollover head protection for front and rear-seat outboard occupants <sup>36</sup>	<input type="checkbox"/>	<input type="checkbox"/>	<input type="checkbox"/>
3-point ALR/ELR passenger seat belt system (ELR for driver)	<input type="checkbox"/>	<input type="checkbox"/>	<input type="checkbox"/>
Front seat belts with pretensioners and load limiters	<input type="checkbox"/>	<input type="checkbox"/>	<input type="checkbox"/>
LATCH System (Lower Anchors and Tethers for CHildren)	<input type="checkbox"/>	<input type="checkbox"/>	<input type="checkbox"/>
Zone Body construction with front and rear crumple zones	<input type="checkbox"/>	<input type="checkbox"/>	<input type="checkbox"/>
Energy-absorbing steering column	<input type="checkbox"/>	<input type="checkbox"/>	<input type="checkbox"/>
High-strength steel side-door guard beams	<input type="checkbox"/>	<input type="checkbox"/>	<input type="checkbox"/>
Hood-buckling creases	<input type="checkbox"/>	<input type="checkbox"/>	<input type="checkbox"/>
Tire Pressure Monitoring System (TPMS) with Easy-Fill Tire Alert <sup>37,38</sup>	<input type="checkbox"/>	<input type="checkbox"/>	<input type="checkbox"/>
Nissan Vehicle Immobilizer System	<input type="checkbox"/>	<input type="checkbox"/>	<input type="checkbox"/>

Standard

## DIMENSIONS/CAPACITIES/WEIGHTS/FUEL

Dimensions	SL	SR	PLT
<b>Exterior — mm (inches)</b>			
Wheelbase	2775 (109.3)		
Overall length	4897 (192.8)		
Overall width	1860 (73.2)		
Overall height	1436 (56.5)		
Track width	1585 (62.4)		

Aerodynamics — Cd	SL	SR	PLT
Drag coefficient	0.29 (0.30 for SR)		
<b>Interior (front/rear) — mm (inches)</b>			
Head room	987 (38.9)/910 (35.8)		
Leg room	1143 (45.0)/870 (34.2)		
Hip room	1375.5 (54.2)/1340 (53.5)		
Shoulder room	1439 (56.7)/1415 (55.7)		

Capacities	SL	SR	PLT
Seating capacity	5		
Interior passenger volume — L (cu. ft.)	2730 (96.4)		
Cargo volume — L (cu. ft.) <sup>39</sup>	405 (14.3)		
Fuel tank — L (Imp. gal.)	68.1 (14.98)		

Curb Weights — kg (lbs.)	SL	SR	Platinum
Base total	1679 (3701.6)	1685.7 (3716.3)	1690.9 (3727.8)

2023 Fuel Consumption Estimates — L/100 km (MPG) <sup>40</sup>	SL	SR	PLT
City	11.6 (24)		
Highway	7.9 (36)		
Combined	9.9 (28)		
— Actual mileage may vary with driving conditions — use for comparison only.			

Nissan's environmental action plan focuses on several key areas. In addition to increasing production of Zero Tailpipe Emission vehicles like the 100% electric LEAF,\* we're improving fuel efficiency across our lineup, and reducing the environmental impact of manufacturing through energy-efficient practices in our plants.



### NISSAN MAXIMA®

Isn't it time you were passionate about the vehicle you drive?  
Welcome to the 2023 Maxima®

Follow Nissan Canada on:





Nissan Intelligent Mobility moves you one step ahead. In cars that feel like an extension of you, helping you see more and sense more, reacting with you, and sometimes even for you. Nissan Intelligent Mobility is about a better future — moving us to a world that's safer, more sustainable, and exciting.

<sup>1</sup>Availability of features vary by vehicle model year, model, trim level, packaging, and options. Please see Owner's Manual for important feature information. <sup>2</sup>Driving is serious business and requires your full attention. If you have to use the connected device while driving, exercise extreme caution at all times so full attention may be given to vehicle operation. Smartphone or other external device not included. <sup>3</sup>Information displayed is dependent on how vehicle is equipped. Driving is serious business and requires your full attention. If you have to use the feature while driving, exercise extreme caution at all times so full attention may be given to vehicle operation. <sup>4</sup>Driving is serious business and requires your full attention. If you have to use the feature while driving, exercise extreme caution at all times so full attention may be given to vehicle operation. <sup>5</sup>Never program while driving. GPS mapping may not be detailed in all areas or reflect current road status. <sup>6</sup>Available feature. <sup>7</sup>Leather appointments. <sup>8</sup>Zero Gravity seats for outboard passengers only. <sup>9</sup>Feature availability is dependent on vehicle model, trim level, packaging and options. Compatible connected device may be required and feature availability may be dependent on device's capability. Refer to connected device's Owner's Manual for details. Late availability for some features. Driving is serious business and requires your full attention. Only use features and connected devices when safe and legal to do so. Some features, including automatic crash notification and SOS, are dependent upon the telematics device being in operative condition, its ability to connect to a wireless network, compatible wireless network availability, navigation map data and GPS satellite signal receptions, the absence of which can limit or prevent the ability to reach Customer Care or receive support. GPS mapping may not be detailed in all areas or reflect current road status. Never program GPS while driving. Only use Remote Engine Start and Remote Horn features in accordance with any laws, rules or ordinances in effect in your vehicle's location. Some services and features are provided by independent companies not within Nissan's control. **Should service provider terminate or restrict service or features, service or features may be suspended or terminated without notice or with no liability to Nissan or its partners or agents.** Services and features may require compatible cellular network provided by independent companies not within Nissan or its partners' or agents' control. Cellular network signal strength may vary and may not be available in all areas or at all times. Services and features may not function if cellular network is unavailable, restricted, or terminated. Nissan and its partners or agents are not responsible for associated costs or other third party charges that may be required for continued operation due to cellular network unavailability, restriction, or termination (including equipment replacements/upgrades, if available, or roaming charges on alternative networks). Technology is evolving, and changes by independent companies are not within Nissan's or its partners' or agents' control. Enrollment, owner consent, personal identification number (PIN), and subscription agreement may be required to receive full suite of features and services. Trial periods (if applicable) begin on the date of vehicle purchase or lease of a new Nissan. Trial periods may be subject to change at any time and may be subject to early termination without notice. Required subscriptions may be sold separately for each available feature or service after trial period ends, and may continue until you call service provider to cancel. Installation costs, one-time activation fee, other fees and taxes may apply. Fees and programming subject to change. Feature may be subject to age restrictions in some areas. Subscriptions governed by service provider's subscription agreement, terms and conditions and privacy statements available at service provider's website. Text rates or data usage may apply. The Nissan names, logos and slogans are trademarks owned by or licensed to Nissan Motor Co. Ltd. or its North American subsidiaries. Other trademarks and trade names are those of their respective owners. **For important safety information, system limitations, and additional operating and feature information, see Dealer or Owner's Manual.** <sup>10</sup>Use the text messaging feature after stopping your vehicle in a safe location. If you have to use the feature while driving, exercise extreme caution at all times so full attention may be given to vehicle operation. Compatible smartphone required. Text rates and/or data usage may apply. <sup>11</sup>Intelligent Driver Alertness cannot provide a warning in every situation. See Owner's Manual for safety information. <sup>12</sup>Nissan advanced safety technologies can't prevent all collisions or warn in all situations. See Owner's Manual for important safety information. <sup>13</sup>Intelligent Emergency Braking with Pedestrian Detection cannot prevent all collisions and may not provide warning or braking in all conditions. Driver should monitor traffic conditions and brake as needed to prevent collisions. See Owner's Manual for safety information. <sup>14</sup>Rear Automatic Braking cannot prevent all collisions and may not provide warning or braking in all conditions. Driver should always turn and check surroundings before driving and brake as needed to prevent collisions. See Owner's Manual for safety information. <sup>15</sup>Rear Cross Traffic Alert may not detect all vehicles. See Owner's Manual for safety information. <sup>16</sup>Blind Spot Warning cannot prevent collisions and may not detect every object or warn in all situations. Driver should always turn and look before changing lanes. See Owner's Manual for safety information. <sup>17</sup>Intelligent Lane Intervention and Lane Departure Warning only operate when lane markings are detectable. See Owner's Manual for safety information. <sup>18</sup>Intelligent Around View<sup>®</sup> Monitor cannot eliminate blind spots and may not detect every object. Driver should always turn and check surroundings before driving. See Owner's Manual for safety information. <sup>19</sup>Virtual composite 360<sup>°</sup> view. <sup>20</sup>Intelligent Cruise Control uses limited braking and is not a collision avoidance or warning system. Driver should monitor traffic conditions and brake as needed to prevent collisions. See Owner's Manual for safety information. <sup>21</sup>Intelligent Forward Collision Warning cannot prevent collisions. See Owner's Manual for safety information. <sup>22</sup>Extra cost option. <sup>23</sup>Whichever occurs first. <sup>24</sup>Horsepower and torque figures based on premium fuel only. <sup>25</sup>RearView Monitor may not detect every object and does not eliminate blind spots or warn of moving objects. See Owner's Manual for safety information. <sup>26</sup>Sonar System may not detect every object. Driver should always check surroundings before driving. See Owner's Manual for safety information. <sup>27</sup>Intelligent Trace Control cannot prevent collisions or loss of control. Driver should remain in control of vehicle at all times. See Owner's Manual for safety information. <sup>28</sup>Traffic Sign Recognition (TSR) may not detect and read all traffic signs in all conditions. Driver should monitor all traffic signs and obey all traffic laws. <sup>29</sup>Does not detect people or cargo. Always check rear seat before exiting. See Owner's Manual for safety information. <sup>30</sup>Remote Engine Start System to be used only in accordance with laws or rules in effect in your vehicle's location. <sup>31</sup>XM<sup>®</sup> and SiriusXM<sup>®</sup> Satellite Radio is available in the 10 Canadian provinces and the 48 contiguous United States. Subscription sold separately after trial period. All subscriptions subject to customer agreement at [siriusxm.ca/terms](http://siriusxm.ca/terms). All fees and programming subject to change. ©2022 Sirius XM Canada Inc. The Sirius<sup>®</sup>, XM<sup>®</sup>, and SiriusXM<sup>®</sup> names and all related marks and logos are trademarks of Sirius XM Radio Inc. All other trademarks are the property of their respective owners. <sup>32</sup>Availability of specific features is dependent upon the phone's Bluetooth<sup>®</sup> support. Please refer to your phone Owner's Manual for details. Bluetooth<sup>®</sup> word mark and logos are owned by Bluetooth SIG, Inc., and any use of such marks by Nissan is under licence. <sup>33</sup>Brake Assist cannot prevent all collisions and may not provide warning or braking in all conditions. Driver should monitor traffic conditions and brake as needed to prevent collisions. See Owner's Manual for safety information. <sup>34</sup>Vehicle Dynamic Control cannot prevent collisions due to abrupt steering, carelessness, or dangerous driving techniques. It should remain on when driving, except when freeing the vehicle from mud or snow. See Owner's Manual for safety information. <sup>35</sup>Heated rear seats for outboard passengers only. <sup>36</sup>Airbags are only a supplemental restraint system. Always wear your seat belt. Rear-facing child restraints should not be placed in the front-passenger's seat. All children 12 and under should ride in the rear seat properly secured in child restraints, booster seats, or seat belts according to their size. Airbags will only inflate in certain accidents. See Owner's Manual for safety information. <sup>37</sup>Tire Pressure Monitoring System is not a substitute for regular tire pressure checks. See Owner's Manual for safety information. <sup>38</sup>Vehicle must be on for the Easy-Fill Tire Alert to operate. <sup>39</sup>Cargo and load capacity limited by weight and distribution. Always secure cargo. <sup>40</sup>2023 Fuel Consumption Estimates L/100 km (MPG) — 11.6 (24) City / 7.9 (36) Highway / 9.9 (28) Combined. Actual mileage may vary with driving conditions. Use for comparison only. Alcantara<sup>®</sup> is a registered trademark of Alcantara S.p.A. Corporation. Apple CarPlay<sup>®</sup> and Siri<sup>®</sup> are registered trademarks of Apple, Inc. Bluetooth<sup>®</sup> is a registered trademark of Bluetooth SIG, Inc. Bose<sup>®</sup> and Centerpoint<sup>®</sup> are registered trademarks of The Bose Corporation. Facebook<sup>®</sup> is a registered trademark of Facebook, Inc. Google, Android, Android Auto, and other marks are trademarks of Google LLC. To use Android Auto on your car display, you'll need an Android phone running Android 6 or higher, an active data plan, and the Android Auto app. HomeLink<sup>®</sup> is a registered trademark of Gentex Corporation. Instagram<sup>®</sup> is a registered trademark of Instagram, LLC. iPhone<sup>®</sup> is a registered trademark of Apple, Inc. All rights reserved. iPhone<sup>®</sup> or other external device not included. Twitter<sup>®</sup> is a registered trademark of Twitter, Inc. YouTube<sup>®</sup> is a registered trademark of Google LLC. This brochure is intended for general descriptive and informational purposes only. It is subject to change and does not constitute an offer, representation or warranty (express or implied) by Nissan Canada Inc. Interested parties should confirm the accuracy of any information in this brochure as it relates to a vehicle directly with Nissan Canada Inc. before relying on it to make a purchase decision. Nissan Canada Inc. reserves the right to make changes, at any time, without prior notice, in prices, colours, materials, equipment, specifications, and models and to discontinue models or equipment. **Due to continuous product development and other pre- and post-production factors, actual vehicle, materials and specifications may vary from this brochure. Some vehicles shown with optional equipment.** See the actual vehicle for complete accuracy. Availability and delivery times for particular models or equipment may vary. For additional information on availability, options or accessories, see your Nissan dealer or contact Nissan Canada Inc. For more information on Nissan products and services visit [nissan.ca](http://nissan.ca). The Nissan names, logos, product names, feature names, and slogans are trademarks owned by or licensed to Nissan Motor Co. Ltd. and/or its North American subsidiaries. Catalogue number: 99999-MAX23EN. ©2022 Nissan Canada Inc. All rights reserved.