



2021
MURANO®



Your life deserves a better crossover. Ever wonder what the difference is between good and great? Good is fitting in. Great is standing out. Like the 2021 Nissan Murano, a 5-passenger premium crossover you can't take your eyes off of. But greatness is more than stylish looks. It's the confidence of Intelligent All-Wheel Drive^{1,2} and the connectivity of Apple CarPlay^{®3} for your iPhone[®]. This is technology that moves you like never before.

This is the 2021 Nissan Murano.





Enter your preferred setting

Stay cozy thanks to the Remote Engine Start System with Intelligent Climate Control^{2,4} that helps cool off on hot days or warm up and defrost on cold days – before you even step inside. You’ll appreciate a heated steering wheel and Zero Gravity climate-controlled front seats that help reduce fatigue.⁵ Rear passengers can recline and activate their own Quick Comfort[®] heating. It’s a premium experience all around, topped off by adjustable mood lighting, touches of chrome and accents in Dark Wood.^{2,6}

Nissan Murano[®] Platinum AWD shown in Cashmere Semi-aniline Leather.⁷ U.S. instrumentation shown.

Advanced Drive-Assist[®] Display^{8,9}

Passenger-friendly Screen

Wide Centre Console

Rear-seat Perks
USB-C Input¹⁰
Heated Rear Seats²

You're not just driving, you're hosting

Murano[®] offers a unique social space designed to let everyone connect in an airy, premium leather-appointed interior.² The wide centre console allows everyone to mingle without leaning or straining. At the wheel, you have enhanced visibility, thanks to a higher seating position and slimmer side pillars that give way to larger windows. Meanwhile, above you, the expanded Dual Panel Panoramic Moonroof stretches from front to back, breathing in light.² An atmosphere this open makes it easy for everyone to enjoy the journey – and might make your destination seem beside the point.





Climate-controlled front seats

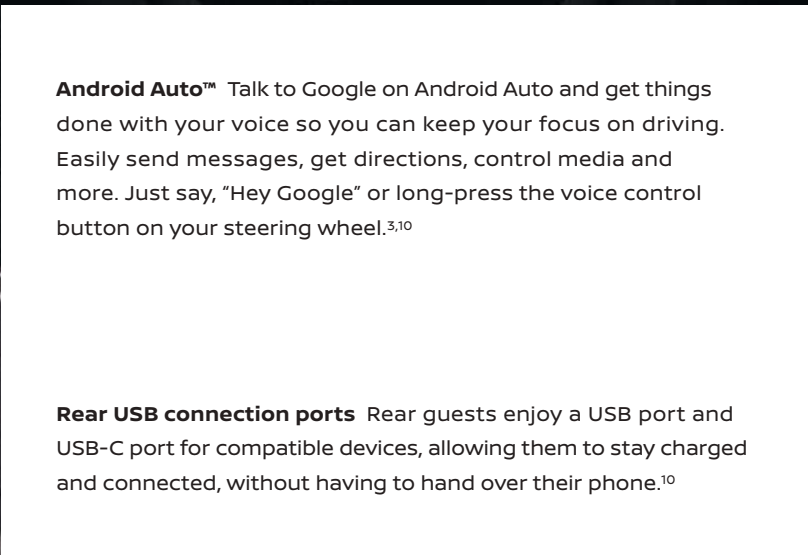
You like it cold, your front passenger likes it warm. Keep everyone happy with climate-controlled front seats that let each of you dial in comfort just as you like it.²



Seamless connectivity

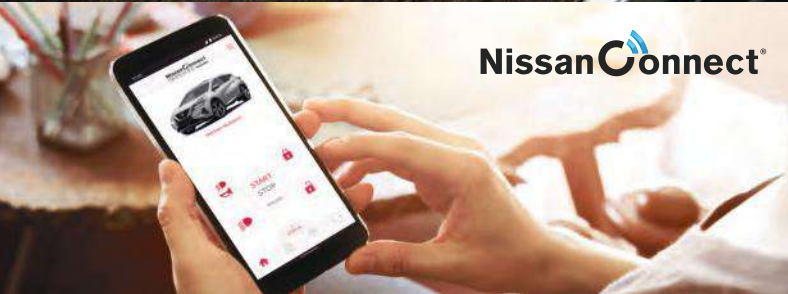
Access the things you want to do on your phone, directly on Murano's 203 mm (8") touch-screen display. Just plug in a compatible smartphone and you'll stay connected.¹⁰

Apple CarPlay® integration Equipped with Siri® voice control, Apple CarPlay® brings on board to your Murano your contacts, favourite messaging apps, Apple Music® playlists, Apple Maps, and more. Simply plug in your compatible iPhone® and go.^{3,10}



Android Auto™ Talk to Google on Android Auto and get things done with your voice so you can keep your focus on driving. Easily send messages, get directions, control media and more. Just say, "Hey Google" or long-press the voice control button on your steering wheel.^{3,10}

Rear USB connection ports Rear guests enjoy a USB port and USB-C port for compatible devices, allowing them to stay charged and connected, without having to hand over their phone.¹⁰



NissanConnect®

Remote start and more from your phone

With NissanConnect® Services, you can remotely start your vehicle from nearly anywhere your smartphone works. Need to unlock your vehicle for a friend? Just tap the unlock button on your phone. You can even find your parked vehicle's location. Now that's cool.^{2,3,4}



What would you like to know?

Turn-by-turn directions,² caller ID, safety features? Or maybe it's something else. Simple controls let you display what's important to you - right in front of you - on the 178 mm (7") Advanced Drive-Assist® Display.^{8,9,11}



Bose Premium Audio System The lights flash on, the first notes of the song begin to fill the air, and the crowd goes wild. This is the best concert ever, and you haven't even left the driveway. With 11 speakers, including dual subwoofers, strategically placed throughout the cabin, the Bose Premium Audio System provides the richness and detail of a live performance. Each speaker has been custom-tuned by Bose engineers to take advantage of the unique interior acoustics of Murano, so every instrument seems to hit you from a different angle. It's front-row sound so good, it might even be better than being there.²



A more confident, exciting, and connected ride

Nissan Intelligent Mobility is changing how you move forever. You'll drive with greater awareness and can even get an assist when you need it. Everything gets easier too, as you seamlessly sync from your smartphone to your Murano® and the world around you. This is the future of driving, and it's here for everyone right now.¹²



Standard Nissan Safety Shield® 360

Imagine feeling confident in most any situation. With a suite of six standard Safety Shield 360 technologies, the Nissan Murano is looking out for you all around. This is additional peace of mind you can enjoy with every 2021 Murano.¹³



INTELLIGENT EMERGENCY BRAKING WITH PEDESTRIAN DETECTION¹⁴



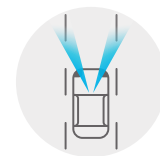
REAR INTELLIGENT EMERGENCY BRAKING¹⁵



REAR CROSS TRAFFIC ALERT¹⁶



BLIND SPOT WARNING¹⁷



LANE DEPARTURE WARNING¹⁸



HIGH BEAM ASSIST



See and sense more around you

Intelligent Around View® Monitor Keep your pride and rims intact. Intelligent Around View Monitor makes parking easy with a virtual composite 360° bird's-eye view of your Murano. You can select from split-screen close-ups of the front, rear, and curbside views for a better look. It also gives you an on-screen alert when it detects moving objects near your vehicle. We're looking at you, shopping cart.^{2,19,20}

Get a hand when you want it

Intelligent Forward Collision Warning What's up ahead? Murano knows. Intelligent Forward Collision Warning watches up to two cars ahead, and when it detects sudden deceleration in front of you, it gives you a warning to slow down.²¹

Intelligent Cruise Control Go with the flow. Intelligent Cruise Control watches the flow of traffic to take the tedium out of your commute. The system helps maintain an adjustable speed and set distance between you and the car ahead.^{2,22}





Because you like your power polished

Power, courtesy of a 3.5-L V6 engine. Murano®'s 260-horsepower 3.5-litre V6 engine keeps you ahead of the pack when you need to be. And efficient fuel economy on the highway keeps it practical. Of course, it doesn't hurt to have aerodynamics that give you a drag coefficient of 0.31 – comparable to sports cars.

Efficiency, brought to you by the Xtronic CVT.* Unlike conventional automatic transmissions, the virtually "gearless" Xtronic CVT (Continuously Variable Transmission) makes gear-hunting a thing of the past. Fully variable gear ratios mean it can hold the engine at the ideal rpm, giving you a wave of power when you need it, and achieving quiet, efficient cruising when you don't.

Intelligent All-Wheel Drive ^{1,2}	260 HP, 3.5-litre V6	Hill start assist
--	----------------------	-------------------

260

 hp

240

 lb.-ft. torque

8.3

 L/100 km hwy ²³

START WITH ALL **4**



CRUISE WITH JUST **2**



CORNER WITH ALL **4**



Intelligent All-Wheel Drive

Take on more. The Intelligent All-Wheel Drive (AWD) is so responsive, it can adapt to changing conditions 30 times faster than the blink of an eye. Snow, rain-covered pavement or tight turns, the system automatically sends power to the wheels that need it most. Even in ideal conditions, Murano's AWD pays big dividends – our passionate engineers also tuned the system for responsive, agile performance.^{1,2}

Nissan Murano® Platinum AWD shown in Pearl White.



Fold-flat rear seats with cargo area-accessible levers²⁴

Motion Activated Liftgate^{2,24}

Generous space within easy reach

For simpler loading and unloading, just kick under the rear bumper to automatically open the Motion Activated Liftgate, without reaching for a key or juggling whatever you're carrying.² Inside, you can collapse the 60/40-split rear seats to increase your cargo volume to 1979 litres (69.9 cu. ft.).²⁴

CHOOSE YOUR COLOUR AND INTERIOR



Graphite Cloth
S|SV



Graphite Semi-Aniline Leather⁷
Platinum



Graphite Leather⁷
SL | Midnight Edition



Cashmere Semi-Aniline Leather⁷
Platinum



Cashmere Leather⁷
SL



Mocha Semi-Aniline Leather⁷
Platinum

Nissan has taken care to ensure that the colour swatches presented here are the closest possible representations of actual vehicle colours. Swatches may vary slightly due to the printing process and whether viewed in daylight, fluorescent or incandescent light. Please see the actual colours at your dealer.

■ Standard

GRAPHITE CLOTH

CASHMERE LEATHER⁷

GRAPHITE LEATHER⁷

CASHMERE SEMI-ANILINE LEATHER⁷

GRAPHITE SEMI-ANILINE LEATHER⁷

MOCHA SEMI-ANILINE LEATHER⁷

Pearl White²⁵ QAB

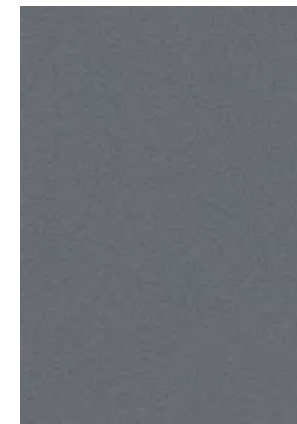
S SV SL ME PLT

■ ■ ■ ■ ■

Boulder Grey Pearl²⁵ KBY

S SV SL ME PLT

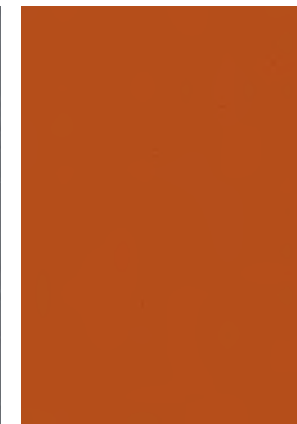
■ ■ ■ ■ ■



Gun Metallic²⁵ KAD

S SV SL ME PLT

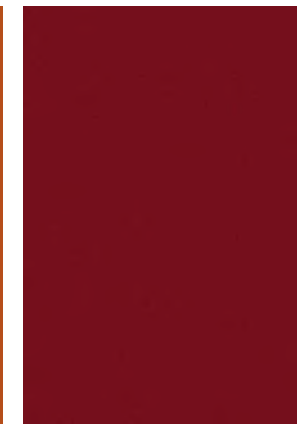
■ ■ ■ ■ ■



Sunset Drift²⁵ EBL

S SV SL ME PLT

■ ■ ■ ■ ■



Scarlet Ember²⁵ NBL

S SV SL ME PLT

■ ■ ■ ■ ■



Deep Blue Pearl²⁵ RAY

S SV SL ME PLT

■ ■ ■ ■ ■



Magnetic Black G41

S SV SL ME PLT

■ ■ ■ ■ ■

GENUINE NISSAN ACCESSORIES

Every Genuine Nissan Accessory is custom-fit, custom-designed and durability-tested. Each one is backed by Nissan's 3-year/60,000-km (whichever occurs first) limited warranty (if installed by dealer at the time of purchase), and can be financed when installed by dealer at time of purchase. Terms, conditions and exclusions apply. See your Warranty Information Booklet for complete details.

A. Stainless Steel Sport Pedals²⁶

Step up your style.

B. All-Season Floor Mats

Take on rain, snow, or mud.

C. Cargo Area Protector²⁴

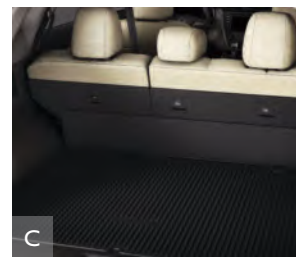
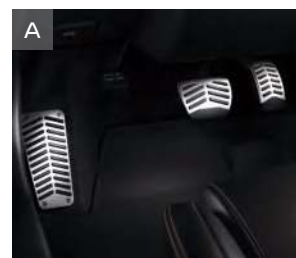
Preserve and protect your cargo – and your Murano.[®]

D. Rear Underbody Trim

Add a stylish touch and make your Murano your own.

Additional Accessories:

- Satin Chrome Rear Bumper Protector
- Hatch Tent
- Tow Hitch Receiver, Class I²⁷
- Carpeted Cargo Mat²⁴
- Portable Cargo Organizer²⁴
- Remote Engine Start System⁴
- Illuminated Kick Plates
- And More



See your Nissan dealer for details, or go to accessories.nissan.ca

BUYING AND OWNING

Finance Options Through Nissan Canada Finance, we offer many attractive lease and loan options that can be tailored to your individual needs. We have unique programs such as the Nissan Grad Program, Loyalty Program or the Nissan Advantage Program. Please visit our website Nissan.ca/finance to explore all of the options available. We have also made it easy to pre-qualify online. All of our programs come with competitive rates and terms. With our flexible options, driving home a new Nissan has never been easier. Consult your local Nissan Dealership for complete details.

No-Nonsense Warranty Every 2021 Nissan is covered by a 3 year/60,000 km²⁸ Comprehensive New Vehicle Warranty, a 5 year/100,000 km²⁸ Powertrain Warranty, an 8 year/130,000 km²⁸ Emission OBD Warranty on selected components, and a 5 year/unlimited km Corrosion Perforation Warranty. As a Nissan owner, you'll also receive a 3 year Roadside Assistance program available to you 24 hours a day. Terms, conditions and exclusions apply. See your Warranty Information Booklet for complete details.

Added Security Plan (ASP) For ultimate peace of mind, consider the Nissan Added Security Plan. It's our commitment to be there for you, and to help you leave your worries behind. Different plans, available for both purchased and leased vehicles, let you tailor the coverage to your driving habits.

Security+Plus™ Prepaid Maintenance Plan The smart choice when it comes to maintaining your new Nissan. Honoured at all participating Nissan Dealers in Canada and the U.S., your vehicle is cared for by factory-trained technicians using Genuine Nissan Parts. And best of all, there's no worrying about price increases on parts or service in the future. A variety of plans are available. Ask your Dealer for details.

Nissan's environmental action plan focuses on several key areas. In addition to increasing production of Zero Emission vehicles like the 100% electric LEAF,[®] we're improving fuel efficiency across our lineup, and reducing the environmental impact of manufacturing through energy-efficient practices in our plants.



CHOOSE YOUR TRIM LEVEL

S

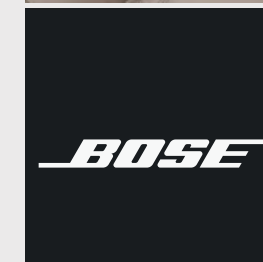
- 260 HP 3.5-litre V6 engine
- Xtronic CVT® (Continuously Variable Transmission)
- Front-Wheel Drive (FWD)
- Intelligent Emergency Braking with Pedestrian Detection¹⁴
- Lane Departure Warning¹⁸
- Intelligent Lane Intervention¹⁸
- Rear Intelligent Emergency Braking¹⁵
- High Beam Assist
- Blind Spot Warning¹⁷
- Rear Cross Traffic Alert¹⁶
- Rear Sonar System²⁹
- Vehicle Dynamic Control (VDC)³⁰ with Traction Control System (TCS)
- 18" Machine-finished aluminum-alloy wheels
- Automatic on/off headlights
- LED headlights with LED Signature Daytime Running Lights
- LED taillights
- Intelligent Forward Collision Warning²¹
- Dual Zone Automatic Temperature Control
- 6-way manual driver's seat
- 4-way manual front-passenger's seat
- Heated front seats
- Nissan Intelligent Key® with Push Button Ignition
- Heated Outside Mirrors

- 60/40-split fold-down rear seatbacks
- Advanced Drive-Assist® Display with 178 mm (7") colour display^{8,9}
- Bluetooth® Hands Free Phone System with Text Messaging Assistant³¹
- NissanConnect® 203 mm (8") touch-screen display⁸
- Voice Recognition¹¹
- Apple CarPlay® integration³³
- Android Auto™³
- RearView Monitor³²
- AM/FM/CD audio system with MP3/WMA CD playback capability
- Two USB ports and two USB-C ports¹⁰
- SiriusXM® Radio with 3-month subscription included³³
- Streaming Audio via Bluetooth® wireless technology³¹
- Tire Pressure Monitoring System (TPMS) with Easy-Fill Tire Alert^{34,35}
- Rear seat belt reminder
- Nissan Advanced Airbag System³⁶
- Black roof rails²⁴
- Rear Door Alert³⁷
- Intelligent Driver Alertness³⁸
- Hill start assist



SL INCLUDES SV EQUIPMENT PLUS:

- 20" Machine-finished aluminum-alloy wheels
- Silver roof rails²⁴
- LED fog lights
- HomeLink® universal garage-door opener
- Auto-dimming rearview mirror
- Driver's seat and outside mirrors position memory
- Leather-appointed seats
- 4-way power front-passenger's seat
- Front and Rear Sonar System²⁹
- Adjustable ambient LED interior lighting
- Bose Premium Audio System with 11 speakers, including dual subwoofers
- Heated rear outboard seats



MIDNIGHT EDITION INCLUDES SL EQUIPMENT PLUS:

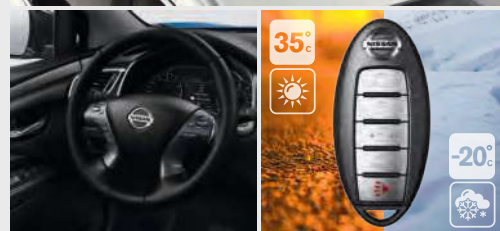
- 20" Black aluminum-alloy wheels
- Black outside mirrors
- Black roof rails
- Black V-Motion grille
- Black front and rear lower bumper accents
- Black side body moulding
- Black exterior badges
- Black Licence Plate Finisher
- Black splash guards
- Illuminated kick plates



SV INCLUDES S EQUIPMENT PLUS:

- Intelligent All-Wheel Drive (AWD)¹
- Traffic Sign Recognition³⁹
- Intelligent Cruise Control²²
- Intelligent Around View® Monitor¹⁹
- Dual Panel Panoramic Moonroof
- Motion Activated Liftgate²⁴
- Remote Engine Start System⁴ with Intelligent Climate Control
- 10-way power driver's seat, including 2-way lumbar support

- Leather-wrapped steering wheel and shift knob
- Heated steering wheel
- SiriusXM® Traffic and Travel Link with 3-month trial access³³
- Nissan Door to Door Navigation with Premium Traffic¹¹



PLATINUM INCLUDES SL EQUIPMENT PLUS:

- 20" Dark hyper silver aluminum-alloy wheels
- Heated smooth leather-wrapped steering wheel
- Semi-aniline leather-appointed seats with diamond-quilted inserts
- Contrast micro-piping for seat, door, and console inserts
- Climate-controlled front seats (heated and cooled)
- Power-tilt and power-telescoping steering column with memory position
- NissanConnect® Services powered by SiriusXM® with trial access to 3-year Select and 6-month Premium Plus packages^{3,4}



NissanConnect®

Images may show additional available equipment.

SPECIFICATIONS

Engine	S	SV	SL	ME	PLT
3.5-litre DOHC 24-valve V6 engine	■	■	■	■	■
— Horsepower – 260 HP @ 6,000 rpm					
— Torque – 240 lb.-ft. @ 4,400 rpm					
Continuously Variable Valve Timing Control System (CVTCS) on intake valves	■	■	■	■	■
Variable induction system	■	■	■	■	■
Nissan Direct Ignition System	■	■	■	■	■
Double-tipped iridium spark plugs	■	■	■	■	■
Electronic drive-by-wire throttle	■	■	■	■	■

Drivetrain	S	SV	SL	ME	PLT
Front-Wheel Drive (FWD)	■				
Intelligent All-Wheel Drive (AWD) ¹		■			■
Xtronic CVT* (Continuously Variable Transmission)	■	■	■	■	■

Brakes	S	SV	SL	ME	PLT
4-wheel vented disc brakes	■	■	■	■	■
4-wheel Anti-lock Braking System (ABS)	■	■	■	■	■
Electronic Brake force Distribution (EBD)	■	■	■	■	■
Brake Assist ⁴⁰	■	■	■	■	■

Suspension/Steering	S	SV	SL	ME	PLT
Independent strut front suspension	■	■	■	■	■
Multi-link rear independent suspension	■	■	■	■	■
Front and rear stabilizer bars	■	■	■	■	■
Vehicle-speed-sensitive power steering	■	■	■	■	■

Driver Assistance Technologies	S	SV	SL	ME	PLT
Cruise control	■	■	■	■	■
Intelligent Cruise Control ²²		■	■	■	■
Intelligent Emergency Braking with Pedestrian Detection ¹⁴	■	■	■	■	■
Rear Intelligent Emergency Braking ¹⁵	■	■	■	■	■
Intelligent Lane Intervention ¹⁸	■	■	■	■	■
Lane Departure Warning ¹⁸	■	■	■	■	■
Haptic Steering	■	■	■	■	■
Blind Spot Warning ¹⁷	■	■	■	■	■
High Beam Assist	■	■	■	■	■
Rear Cross Traffic Alert ¹⁶	■	■	■	■	■
RearView Monitor ³²		■	■	■	■
Intelligent Around View® Monitor ¹⁹	■	■	■	■	■
Rear Sonar System ²⁹		■	■	■	■
Front and Rear Sonar System ²⁹			■	■	■
Vehicle Dynamic Control (VDC) ³⁰ with Traction Control System (TCS)	■	■	■	■	■
Hill start assist	■	■	■	■	■
Traffic Sign Recognition ³⁹		■	■	■	■
Intelligent Driver Alertness ³⁸	■	■	■	■	■

Wheels/Tires	S	SV	SL	ME	PLT
18" x 7.5" Machine-finished aluminum-alloy wheels	■	■			
20" x 7.5" Machine-finished aluminum-alloy wheels			■		
20" x 7.5" Black aluminum-alloy wheels				■	
20" x 7.5" Dark hyper silver aluminum-alloy wheels					■
P235/65R18 All-Season tires	■	■			
P235/55R20 All-Season tires			■	■	■

Exterior Features	S	SV	SL	ME	PLT
LED headlights with LED signature Daytime Running Lights	■	■	■	■	■
Automatic on/off headlights	■	■	■	■	■

Exterior Features (continued)	S	SV	SL	ME	PLT
LED fog lights			■	■	■
LED taillights	■	■	■	■	■
Black roof rails ²⁴	■	■		■	
Silver roof rails ²⁴			■		■
Dual Panel Panoramic Moonroof		■	■	■	■
Chrome V-Motion grille	■	■	■	■	■
Black V-Motion grille				■	
Chrome door handles	■	■	■	■	■
Splash guards	■	■	■	■	■
Body-colour outside mirrors	■	■	■	■	■
Black painted outside mirrors				■	
Power heated outside mirrors with LED turn signal indicators	■	■			
Power heated outside mirrors with LED turn signal indicators and reverse tilt-down feature			■	■	■
Motion Activated Liftgate ²⁴		■	■	■	■
Black front and rear lower bumper accents				■	
Black side body moulding				■	
Black exterior badges				■	
Black Licence Plate Finisher				■	
UV-reducing solar glass	■	■	■	■	■
Rear privacy glass	■	■	■	■	■

Comfort/Convenience	S	SV	SL	ME	PLT
Fine Vision electroluminescent gauges	■	■	■	■	■
Dual Zone Automatic Temperature Control with in-cabin microfilter	■	■	■	■	■
Rear passenger air conditioning vents	■	■	■	■	■
HomeLink® universal garage-door opener			■	■	■
Driver's seat and outside mirrors position memory			■	■	■
Steering-wheel position memory			■	■	■
Nissan Intelligent Key® with Push Button Ignition	■	■	■	■	■
Remote Engine Start System with Intelligent Climate Control ⁴		■	■	■	■
Rear Door Alert ³⁷	■	■	■	■	■
Power windows with front one-touch auto-up/down	■	■	■	■	■
Power door locks with auto-locking feature	■	■	■	■	■
Remote front windows down	■	■	■	■	■
Tilt and telescoping steering column	■	■	■	■	■
Power-tilt and power-telescoping steering column				■	
Variable intermittent windshield wipers	■	■	■	■	■
Intermittent rear window wiper	■	■	■	■	■
Auto-dimming rearview mirror			■	■	■
Dual illuminated visor vanity mirrors with sun visor extenders	■	■	■	■	■
Three 12-volt DC power outlets ¹⁰	■	■	■	■	■
Adjustable ambient LED interior lighting	■	■	■	■	■
Dual-level centre console	■	■	■	■	■
Cargo area tie-down hooks ²⁴	■	■	■	■	■

Seating/Appointments	S	SV	SL	ME	PLT
6-way manual driver's seat	■	■	■	■	■
10-way power driver's seat, including 2-way lumbar support		■	■	■	■
4-way manual front-passenger's seat	■	■	■	■	■
4-way power front-passenger's seat			■	■	■
Heated front seats	■	■	■	■	■
Climate-controlled front seats (heated and cooled)				■	
Heated rear seats (outboard only)			■	■	■
60/40-split fold-down rear seatbacks with cargo area-accessible levers	■	■	■	■	■
Reclining rear seatbacks with centre armrest	■	■	■	■	■

Seating/Appointments (continued)	S	SV	SL	ME	PLT
Front seatback pockets	■	■	■	■	■
Cloth seat trim	■	■			
Leather-appointed seats			■	■	
Semi-aniline leather seats					■
Contrast micro-piping for seat, door, and console inserts					■
Heated leather-wrapped steering wheel		■	■	■	
Heated smooth leather-wrapped steering wheel					■
Leather-wrapped shift knob		■	■	■	■

Infotainment	S	SV	SL	ME	PLT
Advanced Drive-Assist® Display with 178 mm (7") colour display ^{8,9}	■	■	■	■	■
NissanConnect® 203 mm (8") touch-screen display ⁸	■	■	■	■	■
Nissan Door to Door Navigation with Premium Traffic ¹¹		■	■	■	■
SiriusXM® Traffic and Travel Link with 3-month trial access ³³		■	■	■	■
NissanConnect® Services powered by SiriusXM® with trial access to 3-year select and 6-month Premium Plus packages ^{3,4}					■
Voice Recognition ¹¹	■	■	■	■	■
Apple CarPlay® integration ³	■	■	■	■	■
Android Auto™ ³	■	■	■	■	■
Hands-free Text Messaging Assistant ⁴¹	■	■	■	■	■
Bluetooth® Hands Free Phone System ³¹	■	■	■	■	■
AM/FM/CD display audio system with six speakers	■	■			
Bose Premium Audio System with 11 speakers, including dual subwoofers		■	■	■	■
MP3/WMA CD playback capability	■	■	■	■	■
Auxiliary audio input jack ¹⁰	■	■	■	■	■
Two USB ports and two USB-C ports ¹⁰	■	■	■	■	■
SiriusXM® Radio with 3-month subscription included ³³	■	■	■	■	■
Streaming Audio via Bluetooth® ³¹	■	■	■	■	■
Radio Data System (RDS)	■	■	■	■	■
Speed-sensitive volume	■	■	■	■	■
Illuminated steering wheel-mounted audio controls	■	■	■	■	■

Safety/Security	S	SV	SL	ME	PLT
Nissan Advanced Airbag System with supplemental front airbags with seat belt and occupant-classification sensors ³⁶	■	■	■	■	■
Driver and front-passenger seat-mounted side-impact supplemental airbags ³⁶	■	■	■	■	■
Roof-mounted curtain supplemental airbags with rollover sensor for side-impact and rollover head protection for front and rear-seat outboard occupants ³⁶	■	■	■	■	■
Driver and front-passenger supplemental knee airbag ³⁶	■	■	■	■	■
Rear seat belt reminder	■	■	■	■	■
3-point ALR/ELR passenger seat belt system (ELR for driver)	■	■	■	■	■
Front seat belts with pretensioners and load limiters	■	■	■	■	■
Front-seat and three rear-seat head restraints	■	■	■	■	■
LATCH System (Lower Anchors and Tethers for CHildren)	■	■	■	■	■
Energy-absorbing steering column	■	■	■	■	■
High-strength steel side-door guard beams	■	■	■	■	■
Zone Body construction with front and rear crumple zones	■	■	■	■	■
Hood buckling creases	■	■	■	■	■
Tire Pressure Monitoring System (TPMS) with individual tire pressure display and Easy-Fill Tire Alert ^{34,35}	■	■	■	■	■
Vehicle Security System	■	■	■	■	■
Nissan Vehicle Immobilizer System	■	■	■	■	■

■ Standard

DIMENSIONS/CAPACITIES/WEIGHTS/FUEL

Exterior Dimensions – mm (Inches)	
Wheelbase	2825 (111.2)
Overall length	4887.8 (192.4)
Overall width	1915.6 (75.4)
Overall height	1722 (67.8)
Track width (front and rear)	1640 (64.6)

Interior Dimensions – mm (Inches)	
Interior (front/rear)	
Head room with moonroof	967.3 (38.1) / 959.3 (37.8)
Head room without moonroof	1013.8 (39.9) / 1010.8 (39.8)
Leg room	1028.1 (40.5) / 981.9 (38.7)
Shoulder room	1512.3 (59.5) / 1495 (58.9)

Cargo Dimensions – mm (Inches) ²⁴	
Length with rear seat up	940.9 (37)
Length with rear seat down	1888.6 (74.4)
Width	1092 (43)
Height with moonroof	808.2 (31.8)
Height without moonroof	855.7 (33.7)

Capacities	
Seating capacity	5
Interior passenger volume with moonroof – L (cu. ft.)	2911 (102.8)
Interior passenger volume without moonroof – L (cu. ft.)	3061.1 (108.1)
Cargo volume with rear seat up – L (cu. ft.)	909 (32.1)
Cargo volume with rear seat down – L (cu. ft.)	1897.2 (67)
Fuel tank – L (Imp. gal.)	72 (19)
Maximum towing capacity – kg (lbs.) ²⁷	680 (1500)

Curb Weights – kg (lbs.)	
--------------------------	--

Base total	S	SV	SL	ME	PLATINUM
FWD	1739 (3833)	-	-	-	-
AWD	-	1813 (3997)	1847 (4071)	1847 (4071)	1877 (4137)

2021 Fuel Economy Estimates – L/100 km (MPG) ⁴²	
--	--

City/Hwy/MPG	
FWD	11.7/8.3 (24/34)
AWD	12.0/8.5 (24/33)

Actual mileage may vary with driving conditions – use for comparison only.

NISSAN MURANO®

Isn't it time you were passionate about the vehicle you drive?

Welcome to the 2021 Murano.

Follow Nissan Canada on:





Nissan Intelligent Mobility moves you one step ahead. In cars that feel like an extension of you, helping you see more and sense more, reacting with you, and sometimes even for you. Nissan Intelligent Mobility is about a better future - moving through life with greater confidence, excitement and connection to the world around you.

¹Intelligent All-Wheel Drive cannot prevent collisions or provide enhanced traction in all conditions. Always monitor traffic and weather conditions. ²Available feature. ³Feature availability is dependent on vehicle model, trim level, packaging and options. Compatible connected device may be required and feature availability may be dependent on device's capability. Refer to connected device's Owner's Manual for details. Late availability for some features. Driving is serious business and requires your full attention. Only use features and connected devices when safe and legal to do so. Some features, including automatic crash notification and SOS, are dependent upon the telematics device being in operative condition, its ability to connect to a wireless network, compatible wireless network availability, navigation map data and GPS satellite signal receptions, the absence of which can limit or prevent the ability to reach Customer Care or receive support. GPS mapping may not be detailed in all areas or reflect current road status. Never program GPS while driving. Only use Remote Engine Start and Remote Horn features in accordance with any laws, rules or ordinances in effect in your vehicle's location. Some services and features are provided by independent companies not within Nissan's control. **Should service provider terminate or restrict service or features, service or features may be suspended or terminated without notice or with no liability to Nissan or its partners or agents.** Services and features may require compatible cellular network provided by independent companies not within Nissan or its partners' or agents' control. Cellular network signal strength may vary and may not be available in all areas or at all times. Services and features may not function if cellular network is unavailable, restricted, or terminated. Nissan and its partners or agents are not responsible for associated costs or other third party changes that may be required for continued operation due to cellular network unavailability, restriction, or termination (including equipment replacements/upgrades, if available, or roaming charges on alternative networks). Technology is evolving, and changes by independent companies are not within Nissan's or its partners' or agents' control. Enrollment, owner consent, personal identification number (PIN), and subscription agreement may be required to receive full suite of features and services. Trial periods (if applicable) begin on the date of vehicle purchase or lease of a new Nissan. Trial periods may be subject to change at any time and may be subject to early termination without notice. Required subscriptions may be sold separately for each available feature or service after trial period ends, and may continue until you call service provider to cancel. Installation costs, one-time activation fee, other fees and taxes may apply. Fees and programming subject to change. Feature may be subject to age restrictions in some areas. Subscriptions governed by service provider's subscription agreement, terms and conditions and privacy statements available at service provider's website. Text rates or data usage may apply. The Nissan names, logos and slogans are trademarks owned by or licensed to Nissan Motor Co. Ltd. or its North American subsidiaries. Other trademarks and trade names are those of their respective owners. **For important safety information, system limitations, and additional operating and feature information, see Dealer or Owner's Manual.** ⁴Provincial laws may apply. Review before using. ⁵Front seats and rear outboard seats only. ⁶Do not ride in a moving vehicle when the seatback is reclined. For the most effective protection, the seat should be upright. See Owner's Manual for safety information. ⁷Leather appointments. ⁸Driving is serious business and requires your full attention. If you have to use the feature while driving, exercise extreme caution at all times so full attention may be given to vehicle operation. ⁹Information displayed is dependent on how vehicle is equipped. ¹⁰Driving is serious business and requires your full attention. If you have to use the connected device while driving, exercise extreme caution at all times so full attention may be given to vehicle operation. ¹¹Never program while driving. GPS mapping may not be detailed in all areas or reflect current road status. ¹²Availability of features vary by vehicle model year, model, trim level, packaging, and options. **Please see Owner's Manual for important feature information.** ¹³Nissan advanced safety technologies can't prevent all collisions or warn in all situations. See Owner's Manual for important safety information. ¹⁴Intelligent Emergency Braking with Pedestrian Detection cannot prevent all collisions and may not provide warning or braking in all conditions. Driver should monitor traffic conditions and brake as needed to prevent collisions. See Owner's Manual for safety information. ¹⁵Rear Intelligent Emergency Braking cannot prevent all collisions and may not provide warning or braking in all conditions. Driver should monitor traffic conditions and brake as needed to prevent collisions. See Owner's Manual for safety information. ¹⁶Rear Cross Traffic Alert may not detect all vehicles. See Owner's Manual for safety information. ¹⁷Blind Spot Warning cannot prevent collisions and may not detect every object or warn in all situations. Driver should always turn and look before changing lanes. See Owner's Manual for safety information. ¹⁸Lane Departure Warning and Intelligent Lane Intervention operate only when lane markings are able to be detected. See Owner's Manual for safety information. ¹⁹Intelligent Around View[®] Monitor cannot eliminate blind spots and may not detect every object. Driver should always turn and check surroundings before driving. See Owner's Manual for safety information. ²⁰Virtual composite 360^o view. ²¹Intelligent Forward Collision Warning cannot prevent collisions. See Owner's Manual for safety information. ²²Intelligent Cruise Control uses limited braking and is not a collision avoidance or warning system. Driver should monitor traffic conditions and brake as needed to prevent collisions. See Owner's Manual for safety information. ²³Front-Wheel Drive (FWD) model only. Actual mileage may vary - use for comparison only. ²⁴Cargo shown for display purposes only. Always secure cargo. Cargo and load capacity limited by weight and distribution. Heavy loading of the vehicle with cargo, will affect the handling and stability of the vehicle. ²⁵Extra cost option. ²⁶Photo is an example only. Nissan vehicle shown may not represent name, model, or current model year. ²⁷Additional components sold separately are required. Hitch ball sold separately. Towing capability varies by configuration. See Nissan Towing Guide and Owner's Manual for additional information. ²⁸Whichever occurs first. ²⁹Sonar System may not detect every object. Driver should always check surroundings before driving. See Owner's Manual for safety information. ³⁰Vehicle Dynamic Control cannot prevent collisions due to abrupt steering, carelessness, or dangerous driving techniques. It should remain on when driving, except when freeing the vehicle from mud or snow. See Owner's Manual for safety information. ³¹Availability of specific features is dependent upon the phone's Bluetooth[®] support. Please refer to your phone Owner's Manual for details. Bluetooth[®] word mark and logos are owned by Bluetooth SIG, Inc., and any use of such marks by Nissan is under licence. ³²RearView Monitor may not detect every object and does not eliminate blind spots or warn of moving objects. See Owner's Manual for safety information. ³³XM[®] and SiriusXM[®] Satellite Radio is available in the 10 Canadian provinces and the 48 contiguous United States. Subscription sold separately after trial period. All subscriptions subject to customer agreement at siriusxm.ca/terms. All fees and programming subject to change. ©2021 Sirius XM Canada Inc. The Sirius[®], XM[®], and SiriusXM[®] names and all related marks and logos are trademarks of Sirius XM Radio Inc. All other trademarks are the property of their respective owners. ³⁴Tire Pressure Monitoring System is not a substitute for regular tire pressure checks. See Owner's Manual for safety information. ³⁵Vehicle must be on for the Easy-Fill Tire Alert to operate. ³⁶Airbags are only a supplemental restraint system. Always wear your seat belt. Rear-facing child restraints should not be placed in the front-passenger's seat. All children 12 and under should ride in the rear seat properly secured in child restraints, booster seats, or seat belts according to their size. Airbags will only inflate in certain accidents. See Owner's Manual for safety information. ³⁷Does not detect people or cargo. Always check rear seat before exiting. See Owner's Manual for safety information. ³⁸Intelligent Driver Alertness cannot provide a warning in every situation. See Owner's Manual for safety information. ³⁹Traffic Sign Recognition (TSR) may not detect and read all traffic signs in all conditions. Driver should monitor all traffic signs and obey all traffic laws. ⁴⁰Brake Assist cannot prevent all collisions and may not provide warning or braking in all conditions. Driver should monitor traffic conditions and brake as needed to prevent collisions. See Owner's Manual for safety information. ⁴¹Use Hands Free Text Messaging when parked in a safe location. If you must use while driving, monitor traffic conditions and keep both hands on the steering wheel to prevent collisions. Compatible device required. Message and data rates may apply. ⁴²2021 Fuel Consumption Estimate. Actual mileage may vary with driving conditions - use for comparison only. Apple CarPlay[®], Apple Music[®], Siri[®] and Siri[®] Eyes Free are registered trademarks of Apple, Inc. Bluetooth[®] is a registered trademark of Bluetooth SIG, Inc. Bose[®] is a registered trademark of The Bose Corporation. Facebook[®] is a registered trademark of Facebook, Inc. Google, Android Auto, YouTube and related marks are trademarks of Google LLC. HomeLink[®] is a registered trademark of Gentex Corporation. Instagram[®] is a registered trademark of Instagram, LLC. iPhone[®] is a registered trademark of Apple, Inc. All rights reserved. iPhone[®] or other external device not included. The Sirius[®], XM[®], and SiriusXM[®] names and all related marks and logos are trademarks of Sirius XM Radio Inc. All other trademarks are the property of their respective owners. Twitter[®] is a registered trademark of Twitter, Inc. All illustrations, photographs and specifications in this brochure are based on the latest product information. See actual vehicle for complete accuracy. Nissan Canada Inc. reserves the right to make changes at any time, without notice, in prices, colours, materials, equipment, specifications and models, and to discontinue models or equipment. For information on additional options and accessories, contact your Nissan Dealership. Registered trademarks are property of their respective owners. At nissan.ca, you'll find a way to "build your own Nissan," a dealer locator, and more information about key Nissan support services. The Nissan names, logos, product names, feature names, and slogans are trademarks owned by or licensed to Nissan Motor Co. Ltd. and/or its North American subsidiaries. **Always wear your seat belt, and please don't drink and drive.** Printed in January 2021. Catalogue number: 99999-MUR21EN. ©2021 Nissan Canada Inc. All rights reserved.

visit nissan.ca