



Innovation
that excites

2017
VERSA[®] NOTE[®]



MAKE a break for it and go somewhere unique. Bring your friends along and all their gear – you’ve got the room. Forget the itinerary, play it by ear with directions and music you can change on the fly. Pit stop: Catch that show downtown. Pull into that tight spot, cameras all around your car make parking a piece of cake. Upgraded front styling and a sharp aerodynamic profile set you apart from the crowd. Winner of ALG’s Canadian Residual Value Award 2014, 2015, and 2016.¹ The 2017 Nissan Versa® Note®. Enjoy **SOMETHING NEW.**



Nissan Versa® Note® SR shown in Deep Blue Pearl.

¹Resale value based on 48-month ALG residual values for the 2016 model year. ALG is the industry benchmark for residual values and depreciation data. See www.alg.com.



Smart design opens up the surprisingly spacious cabin, giving everyone ample room to spread out.

Enjoy seating for five and 97.3 cm (38.3 inches) of rear leg room for even your tallest friends. Up front, the bolstered driver's seat hugs you as you carve through the turns. Available features like a leather-wrapped steering wheel, double-stitched upholstery, and silver and chrome accents add a touch of class. With available Push Button Start, you'll never dig for your keys again. Top it off with available heated front seats, and every trip will be as cozy as it is cool. Just don't be surprised when your friends ask for a ride - again.





NISSAN DIVIDE-N-HIDE® ADJUSTABLE FLOOR PACK IN MORE FUN

When living in the moment is all part of the plan, Versa® Note® has your cargo needs covered with the super-versatile available Divide-N-Hide Adjustable Floor. Vintage coffee table? Day's haul from the farmers market? Get creative with multiple configurations and 532.4 litres (18.8 cubic feet) of cargo space. Rear 60/40 split seats let you bring friends, and oversized items. Or fold down both sides to create a flat cargo area. No matter what the plan is, Versa Note is ready when you are.

Cargo shown for display purposes only. Cargo and load capacity limited by weight and distribution. Always secure all cargo.



SLIDE IT ALL IN
With the rear seats folded down, the Divide-N-Hide Adjustable Floor creates a flat cargo area.



DROP IT ON THE GO
Lower the floor to accommodate taller items at a moment's notice - no removal required.



KEEP IT OUT OF SIGHT
Lift up the adjustable floor and you'll find a convenient hiding place that helps keep valuables out of sight.



NissanConnectSM YOUR WORLD, AT YOUR FINGERTIPS

With available NissanConnect with Mobile Apps, your Versa[®] Note[®] becomes your smartphone's best friend. Which means no more separation anxiety for you. Because now, your own hand-picked music, latest tweets, TripAdvisor[®] tips, Facebook[®] events, and more all come along for the ride, working seamlessly together through your smartphone and Versa Note's colour touch-screen.^{1,2}

Your Versa Note also keeps you in the loop with the Nissan Navigation System (featuring voice recognition),^{1,3} hands-free text messaging,^{1,4} Bluetooth[®] hands-free calling and streaming audio,^{1,5} plus an iPod[®]/USB input.^{1,6}



NISSAN AROUND VIEW[®] MONITOR IT'S GOT YOUR BACK, AND THE REST OF YOU, TOO

Parallel parking just got easier with Versa Note's Around View Monitor.^{1,7} Four cameras give you a virtual composite 360° bird's-eye view of your vehicle, with selectable split-screen close-ups of the front, rear, and curbside views.⁸

¹Available feature. ²Driving is serious business. Only use NissanConnectSM Mobile Apps when safe to do so. App availability is dependent upon vehicle model, trim level, packaging, and/or options. See Nissan.ca/NissanConnect for complete app availability details. Never program while driving. GPS mapping may not be detailed in all areas or reflect current road status. Compatible smartphone required. Cellular network and GPS signals not available in all areas and/or at all times. Cellular technology is evolving, and changes to cellular networks provided by independent companies are not within Nissan's control. Nissan is not responsible for associated costs that may be required for continued operation due to cellular network termination (including equipment upgrades, if available, or roaming charges on alternative networks). Should cellular provider terminate/restrict service, service may be terminated without notice and with no liability to Nissan and its agents or affiliates. Subscription Agreement required and terms and conditions of Subscription Agreement apply. See Nissan.ca/NissanConnect for details. Text rates and/or data usage may apply. ³Never program while driving. GPS mapping may not be detailed in all areas or reflect current road status. ⁴Use the text messaging feature after stopping your vehicle in a safe location. If you have to use the feature while driving,

exercise extreme caution at all times so full attention may be given to vehicle operation. Compatible smartphone required. Text rates and/or data usage may apply. ⁵Availability of specific features is dependent upon the phone's Bluetooth[®] support. Please refer to your phone Owner's Manual for details. Bluetooth[®] word mark and logos are owned by Bluetooth SIG, Inc., and any use of such marks by Nissan is under licence. ⁶Driving is serious business and requires your full attention. If you have to use the connected device while driving, exercise extreme caution at all times so full attention may be given to vehicle operation. ⁷Parking aid/convenience feature. Cannot completely eliminate blind spots. May not detect every object and does not warn of moving objects. Always check surroundings and turn to look behind you before moving vehicle. ⁸Virtual composite 360° view. Facebook[®] is a registered trademark of Facebook, Inc. Google[®] is a registered trademark of Google Inc. iPod[®] is a registered trademark of Apple, Inc. All rights reserved. iPod[®] not included. The Sirius[®] XM[®] and SiriusXM[®] names and all related marks and logos are trademarks of Sirius XM Radio Inc. TripAdvisor[®] is a registered trademark of TripAdvisor LLC, Ltd. Twitter[®] is a registered trademark of Twitter, Inc.

6.2 L /100 KM (46 MPG)¹ TAKES YOU FARTHER

What if you could get excellent fuel economy in a roomy, comfortable car that's lots of fun to drive? With Versa[®] Note[®], you can. We got there by developing everything from exterior aerodynamics that whisper through the wind, to an advanced 1.6-litre 4-cylinder engine, to a virtually gearless Xtronic CVT[®] transmission that maximizes efficiency and performance. It's all part of Nissan's commitment to creating more environmentally friendly transportation for everyone.



Nissan Versa[®] Note[®] SV shown in Monarch Orange with accessory Rear Roof Spoiler.

SV FEATURES: TRANSFORM YOUR DRIVE

Standard on Versa Note SV, premium perks keep you comfy, connected, and help keep an eye out.



BLUETOOTH[®]

Let your passengers play DJ with Versa Note SV. Just connect a Bluetooth[®]-compatible device, like a phone or tablet, to stream music from any seat.²



REARVIEW MONITOR

When you engage Reverse, Versa Note's RearView Monitor helps you see what's directly behind you on its 127 mm (5.0") colour display.³



FINE VISION METER

From the ambient lighting on the multi-information display to the blue-lit data on the combimeter, information is a beautiful sight.



HEATED FRONT SEATS

Perfect for those chilly mornings, heated front seats help get you warm and toasty.



15" ALUMINUM-ALLOY WHEELS

These wheels add a stylish touch that's designed to impress.



UPGRADED SEATING

Finely crafted and durable double-stitched seats enhance quality and comfort.

¹2017 Highway Fuel Economy Estimate with Xtronic CVT. Actual mileage may vary with driving conditions – use for comparison only. ²Availability of specific features is dependent upon the phone's Bluetooth support. Please refer to your phone Owner's Manual for details. Bluetooth word mark and logos are owned by Bluetooth SIG, Inc., and any use of such marks by Nissan is under licence. ³Parking aid/convenience feature. Cannot completely eliminate blind spots. May not detect every object and does not warn of moving objects. Always check surroundings and turn to look behind you before moving vehicle.

NISSAN SAFETY SHIELD PHILOSOPHY

INNOVATION THAT LOOKS OUT FOR YOU

What if you had the confidence you need for every part of your drive? The Nissan Safety Shield philosophy is a comprehensive approach to safety that guides the engineering and development of every vehicle we make.

RESPOND

Whether you need to hit the brakes hard or manoeuvre around an unexpected obstacle, these standard technologies help you respond to a potentially harmful situation.

Vehicle Dynamic Control (VDC) helps you maintain your steered path.¹

Traction Control System (TCS) helps reduce wheelspin in low-traction situations.

Anti-lock Braking System (ABS) helps you maintain steering control around obstacles while braking heavily.

Electronic Brake force Distribution (EBD) sends extra force to the rear brakes when you have additional weight of passengers or cargo in the back.

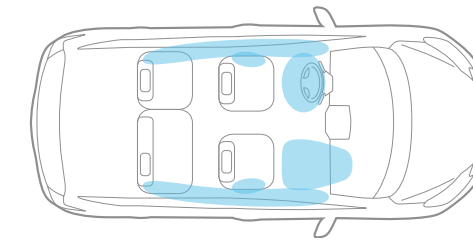
Brake Assist helps apply maximum braking force if it detects hard braking and senses you are in an emergency situation.²

¹VDC, which should remain on when driving except when freeing the vehicle from mud or snow, cannot prevent accidents due to abrupt steering, carelessness, or dangerous driving techniques. ²Brake Assist is only an aid to assist the driver and is not a collision warning or avoidance device. It is the driver's responsibility to be in control of the vehicle at all times. ³Airbags are only a supplemental restraint system; always wear your seat belt. Even with the occupant-classification sensor, rear-facing child restraints should not be placed in the front-passenger's seat. Also, in addition to any other requirement of applicable law, all children 12 and under should ride in the rear seat properly secured in child restraints, booster seats, or seat belts, according to their size. Airbags will only inflate in certain accidents; see your Owner's Manual for details. Inflated airbags shown for illustration purposes only, actual coverage area may differ. Airbags deflate after deployment.



PROTECT

When a collision is unavoidable, Nissan's Zone Body construction helps absorb the impact while the advanced seat belt and airbag systems help protect passengers.³



6 STANDARD AIRBAGS³

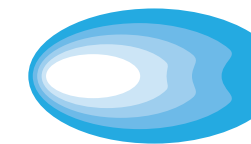
Six Standard Airbags³ Nissan Advanced Airbag System (AABS) has dual-stage supplemental front airbags with seat-belt and occupant-classification sensors.³ In addition, Versa[®] Note[®] features driver and front passenger seat-mounted side-impact supplemental airbags,³ along with roof-mounted curtain side-impact supplemental airbags with rollover sensor.³

LATCH System (Lower Anchors and Tethers for Children)



Nissan safety engineers have dedicated thousands of hours to evaluating hundreds of child restraints in Nissan vehicles. The result: an industry first,

The Snug Kids Child Safety Seat Fit Guide. This guide lists child seats that fit the rear seats of Nissan vehicles, as well as offers invaluable tips on correct installation. Look for the latest Fit Guide at Nissan.ca/en/owners

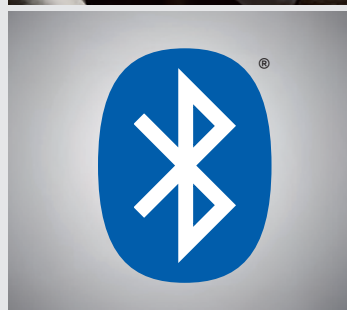


SAFETY SHIELD

CHOOSE YOUR TRIM LEVEL

S

- 1.6-litre 4-cylinder engine
- 5-speed manual transmission or Xtronic CVT* (Continuously Variable Transmission)
- 15" x 5.5" steel wheels with wheel covers
- P185/65HR15 all-season low rolling resistance tires
- Air conditioning
- Bluetooth® Hands Free Phone System¹
- Dual power heated outside mirrors
- Fine Vision electroluminescent gauges with trip computer
- Front map light
- Dual front and dual rear cup holders in centre console
- 60/40 Split fold-down rear seats
- AM/FM/CD audio system with auxiliary audio input jack²
- MP3/WMA CD playback capability
- Illuminated steering wheel-mounted audio controls
- 4-wheel Anti-lock Braking System (ABS)
- Vehicle Dynamic Control (VDC) with Traction Control System (TCS)
- Nissan Advanced Airbag System

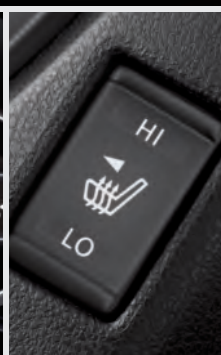


SV INCLUDES S EQUIPMENT PLUS:

- 15" x 5.5" aluminum-alloy wheels
- Premium AM/FM/CD audio system with 127 mm (5.0") colour display
- SiriusXM® Satellite Radio³
- USB connection port for iPod® interface and other compatible devices²
- Streaming audio via Bluetooth® wireless technology¹
- Hands-free text messaging assistant
- RearView Monitor
- Upgraded Fine Vision electroluminescent gauges with 3-dial display, trip computer, and outside temperature display
- Cruise control
- Integrated Key with remote keyless entry
- Power windows and door locks
- Divide-N-Hide® Adjustable Floor
- Sun visors with vanity mirrors and extensions
- 6-way manual driver's seat with armrest
- Upgraded cloth seat and door trim
- Rear-seat fold-down centre armrest with cup holders
- Heated front seats
- Leather-wrapped steering wheel
- Chrome inside door handles and vents
- Piano Black trim and silver accents on shift knob and shift surround
- Deletes rear cup holders in centre console



U.S. instrumentation shown.



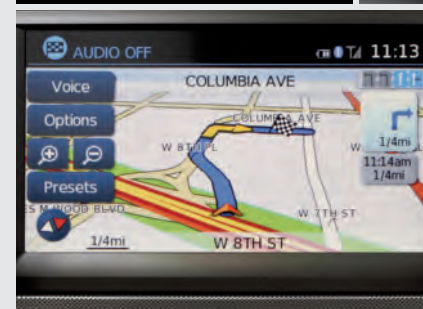
SR INCLUDES SV EQUIPMENT PLUS:

- Xtronic CVT* (Continuously Variable Transmission)
- 16" x 6.0" 5-split spoke sporty aluminum-alloy wheels
- P195/55HR16 all-season low rolling resistance tires
- Sport side sills
- Fog lights
- Dual power outside mirrors with LED turn signals
- Rear roof spoiler
- Suede-like seat fabric with colour accents and stitching
- Leather-wrapped sport steering wheel
- Variable intermittent windshield wipers



SL INCLUDES SV EQUIPMENT PLUS:

- Xtronic CVT* (Continuously Variable Transmission)
- 16" x 6.0" aluminum-alloy wheels
- P195/55HR16 all-season low rolling resistance tires
- Fog lights
- NissanConnectSM with Navigation and Mobile Apps with 147 mm (5.8") colour touch-screen display and Nissan Voice Recognition for navigation and audio^{4,5}
- SiriusXM® Traffic³
- Nissan Intelligent Key® with Push Button Ignition
- Variable intermittent windshield wipers
- Around View® Monitor



¹Availability of specific features is dependent upon the phone's Bluetooth® support. Please refer to your phone Owner's Manual for details. Bluetooth® word mark and logos are owned by Bluetooth SIG, Inc., and any use of such marks by Nissan is under licence. ²Driving is serious business and requires your full attention. If you have to use the connected device while driving, exercise extreme caution at all times so full attention may be given to vehicle operation. iPod® is a registered trademark of Apple, Inc. All rights reserved. iPod® or other external device not included. ³XM® and SiriusXM® Satellite Radio is available in the 10 Canadian provinces and the 48 contiguous United States. Basic monthly subscription required and sold separately after trial period. NavTraffic®/SiriusXM® Traffic is available in select North American markets. In Canada, at time of printing, incident and flow data is available for 12 metropolitan areas of Canada (Vancouver, Calgary, Edmonton, Toronto, Ottawa, Montreal, Quebec City, Hamilton, St. Catharines, Kitchener, Guelph, and London). Subscription sold separately after trial period. All subscriptions subject to customer agreement at siriusxm.ca/terms. Fees and programming subject to change. ©2016 Sirius XM Canada Inc. The Sirius, XM, and SiriusXM names and all related marks and logos are trademarks of Sirius XM Radio Inc. All other trademarks are the property of their

respective owners. ⁴Driving is serious business. Only use NissanConnectSM Mobile Apps when safe to do so. App availability is dependent upon vehicle model, trim level, packaging, and/or options. See Nissan.ca/NissanConnect for complete app availability details. Never program while driving. GPS mapping may not be detailed in all areas or reflect current road status. Compatible smartphone required. Cellular network and GPS signals not available in all areas and/or at all times. Cellular technology is evolving, and changes to cellular networks provided by independent companies are not within Nissan's control. Nissan is not responsible for associated costs that may be required for continued operation due to cellular network termination (including equipment upgrades, if available, or roaming charges on alternative networks). Should cellular provider terminate/restrict service, service may be terminated without notice and with no liability to Nissan and its agents or affiliates. Subscription Agreement required and terms and conditions of Subscription Agreement apply. See Nissan.ca/NissanConnect for details. Text rates and/or data usage may apply. ⁵Never program while driving. GPS mapping may not be detailed in all areas or reflect current road status.

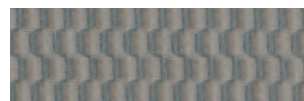
PAINT AND FABRIC



S Charcoal Cloth



SV | SL Charcoal Cloth



SL Wheat Stone Cloth

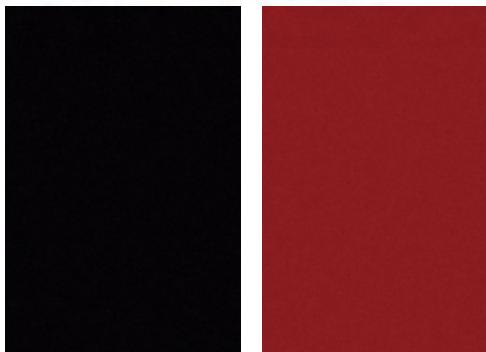


SR Charcoal Cloth

Nissan has taken care to ensure that the colour swatches presented here are the closest possible representations of actual vehicle colours. Swatches may vary slightly due to the printing process and whether viewed in daylight, fluorescent or incandescent light. Please see the actual colours at your local Nissan dealer.

■ Standard
 †Extra cost option.

CHARCOAL CLOTH	S	SV	SR	SL	S	SV	SR	SL
WHEAT STONE CLOTH								



Super Black KH3 Cayenne Red[†] NAH

	S	SV	SR	SL	S	SV	SR	SL



Gun Metallic[†] KAD Aspen White[†] QAC Metallic Blue[†] B17 Monarch Orange[†] EBB Cocoa Embers[†] CAQ Deep Blue Pearl[†] RAY

	S	SV	SR	SL	S	SV	SR	SL	S	SV	SR	SL	S	SV	SR	SL	S	SV	SR	SL	

GENUINE NISSAN ACCESSORIES

Every Genuine Nissan Accessory is: custom-fit, custom-designed and durability-tested; available for finance; and backed by Nissan's 3 year/60,000 km Accessories limited warranty when installed by dealer at time of your vehicle purchase.²

- A. **Rear Cargo Cover³**
Hide your belongings from prying eyes.
- B. **16" Sporty Aluminum-alloy Wheels**
Attitude comes standard.
- C. **Rear Roof Spoiler**
Go ahead, spoil yourself.
- D. **15" Silver Aluminum-alloy Wheels**
Step up your style.

Additional Accessories:

- Portable Cargo Organizer (Black)³
- Interior Ambient Lighting
- Interior Trim Appliqués
- Illuminated Kick Plates
- Carpeted Cargo Mat
- Door Handle Accents
- Rear Hatch Accent
- Rearview Mirror Cover
- Stainless Steel Exhaust Finisher
- All-season Rubber Floor Mats
- And More



BUYING AND OWNING

Finance Options Through Nissan Canada Finance, we offer many attractive lease and loan options that can be tailored to your individual needs. We have unique programs such as the Nissan Grad Program, Loyalty Program or the Nissan Advantage Program. Please visit our website Nissan.ca/finance to explore all of the options available. We have also made it easy to pre-qualify online. All of our programs come with competitive rates and terms. With our flexible options, driving home a new Nissan has never been easier. Consult your local Nissan Dealership for complete details.

No-Nonsense Warranty Every 2017 Nissan is covered by a 3 year/60,000 km⁴ Comprehensive New Vehicle Warranty, a 5 year/100,000 km⁴ Powertrain Warranty, an 8 year/130,000 km⁴ Emission Control Warranty on selected components, and a 5 year/unlimited km Corrosion Perforation Warranty. As a Nissan owner, you'll also receive a 3 year Roadside Assistance program available to you 24 hours a day. Terms, conditions and exclusions apply. See your Warranty Information Booklet for complete details.

Added Security Plan (ASP) For ultimate peace of mind, consider the Nissan Added Security Plan. It's our commitment to be there for you, and to help you leave your worries behind. Different plans, available for both purchased and leased vehicles, let you tailor the coverage to your driving habits.

Security+Plus™ Prepaid Maintenance Plan The smart choice when it comes to maintaining your new Nissan. Honoured at all participating Nissan Dealers in Canada and the U.S., your vehicle is cared for by factory-trained technicians using Genuine Nissan Parts. And best of all, there's no worrying about price increases on parts or service in the future. A variety of plans are available. Ask your Dealer for details.



See your Nissan dealer for details, or go to accessories.nissan.ca

²See your Nissan Dealership and read the actual limited warranty. ³Cargo shown for display purposes only. Cargo and load capacity limited by weight and distribution. Always secure all cargo. ⁴Whichever occurs first.

SPECIFICATIONS

Engine	S	SV	SR	SL
HR16DE – 1.6-litre DOHC 16-valve 4-cylinder engine	■	■	■	■
– Horsepower – 109 HP @ 6000 rpm				
– Torque – 107 lb.-ft. @ 4400 rpm				
Emissions – Tier 2-Bin 5 (EPA); LEV2-ULEV (CARB)	■	■	■	■
Dual injector system	■	■	■	■
Continuously Variable Valve Timing Control System (CVTCS) on intake and exhaust valves	■	■	■	■
Nissan Direct Ignition System	■	■	■	■
Platinum-tipped spark plugs	■	■	■	■
Electronic drive-by-wire throttle	■	■	■	■

Drivetrain	S	SV	SR	SL
Front engine/Front-Wheel Drive	■	■	■	■
5-speed manual transmission	■	■		
Xtronic CVT® (Continuously Variable Transmission)	□	□	■	■

Brakes	S	SV	SR	SL
Vented front disc/rear drum brakes	■	■	■	■
4-wheel Anti-lock Braking System (ABS)	■	■	■	■
Electronic Brake force Distribution (EBD)	■	■	■	■
Brake Assist	■	■	■	■

Suspension/Chassis Bracing/Steering	S	SV	SR	SL
Independent strut front suspension with stabilizer bar	■	■	■	■
Torsion beam rear axle with integrated stabilizer bar	■	■	■	■
Vehicle-speed-sensitive electric power steering	■	■	■	■

Wheels/Tires	S	SV	SR	SL
15" x 5.5" steel wheels with wheel covers	■			
15" x 5.5" aluminum-alloy wheels		■		
16" x 6.0" 5-split spoke aluminum-alloy wheels			■	
16" x 6.0" aluminum-alloy wheels				■
P185/65HR15 all-season low rolling resistance tires	■	■		
P195/55HR16 all-season low rolling resistance tires			■	■

Exterior Features	S	SV	SR	SL
Multi-reflector halogen headlights	■	■	■	■
Aerodynamic taillights	■	■	■	■
Sport side sills			■	
Fog lights			■	■
Dual power heated outside mirrors	■	■		■
Dual power heated outside mirrors with LED turn signals			■	
Rear roof spoiler			■	

Comfort/Convenience	S	SV	SR	SL
NissanConnect SM with Navigation and Mobile Apps with 147 mm (5.8") colour touch-screen display and Nissan Voice Recognition for navigation and audio ^{1,2}				■
SiriusXM [®] Traffic ³				■
Hands-free text messaging assistant		■	■	■

Comfort/Convenience (Continued)	S	SV	SR	SL
RearView Monitor		■	■	■
Around View [®] Monitor				■
Bluetooth [®] Hands Free Phone System ⁴	■	■	■	■
Fine Vision electroluminescent gauges with trip computer	■			
Upgraded Fine Vision electroluminescent gauges with 3-dial display, trip computer and outside temperature display		■	■	■
Air conditioning	■	■	■	■
Integrated Key with remote keyless entry			■	
Nissan Intelligent Key [®] with Push Button Ignition				■
Power door locks with auto-locking feature		■	■	■
Power windows with driver's one-touch auto-down feature		■	■	■
Tilt steering column	■	■	■	■
Cruise control		■	■	■
Variable intermittent windshield wipers			■	■
Intermittent rear window wiper	■	■	■	■
Rear window defroster	■	■	■	■
Front map light	■	■	■	■
Cargo area light	■	■	■	■
Front door map pockets with bottle holders	■	■	■	■
Front cup holders in centre console	■	■	■	■
Rear cup holders in centre console	■			
Front passenger seatback map pockets	■	■	■	■
Divide-N-Hide [®] Adjustable Floor		■	■	■
Rear cargo cover		■	■	■
Sun visors with extensions	■			
Sun visors with vanity mirrors and extensions		■	■	■
Digital clock	■	■	■	■
Auxiliary 12-volt DC power outlet	■	■	■	■
Secondary 12-volt DC power outlet		■	■	■
Battery saver	■	■	■	■
Glove compartment damper		■	■	■

Seating/Appointments	S	SV	SR	SL
4-way manual driver's seat	■			
6-way manual driver's seat		■	■	■
Driver's seat armrest		■	■	■
Heated front seats		■	■	■
60/40 Split fold-down rear seats	■	■	■	■
Rear-seat centre armrest with cup holders		■	■	■
Cloth seat trim	■			
Upgraded cloth seat trim		■		■
Suede-like seat fabric with colour accents and stitching			■	
Cloth door trim accent		■	■	■
Leather-wrapped steering wheel		■		■
Leather-wrapped sport steering wheel			■	
Piano Black trim		■	■	■
Silver accents on dash and vent rings	■	■	■	■
Silver accents on CVT shift knob and shifter surround		□	■	■
Chrome inside door handles, chrome-accented centre vents		■	■	■
Printed non-woven headliner		■	■	■

Audio/Entertainment	S	SV	SR	SL
AM/FM/CD audio system	■			
Premium AM/FM/CD audio system with 127 mm (5.0") colour display		■	■	
AM/FM/CD audio system with 147 mm (5.8") colour touch-screen display				■
Four speakers	■	■	■	■
SiriusXM [®] Satellite Radio ³		■	■	■
Streaming audio via Bluetooth [®] wireless technology ⁴		■	■	■
MP3/WMA CD playback capability	■	■	■	■
Auxiliary audio input jack	■	■	■	■
USB connection port for iPod [®] interface and other compatible devices		■	■	■
Radio Data System (RDS)	■	■	■	■
Speed-sensitive volume control	■	■	■	■
Illuminated steering wheel-mounted audio controls	■	■	■	■

Safety/Security	S	SV	SR	SL
Nissan Advanced Airbag System with dual-stage supplemental front airbags with seat belt and occupant-classification sensors	■	■	■	■
Driver and front-passenger seat-mounted side-impact supplemental airbags	■	■	■	■
Roof-mounted curtain side-impact supplemental airbags for front- and rear-seat outboard occupant head protection	■	■	■	■
Vehicle Dynamic Control (VDC) with Traction Control System (TCS)	■	■	■	■
3-point ALR/ELR passenger seat belt system (ELR for driver)	■	■	■	■
Height-adjustable front head restraints	■	■	■	■
Rear outboard head restraints	■	■	■	■
LATCH System (Lower Anchors and Tethers for Children)	■	■	■	■
Zone Body construction with front and rear crumple zones	■	■	■	■
Hood buckling creases and safety stops	■	■	■	■
Energy-absorbing steering column	■	■	■	■
Pipe-style steel side-door guard beams	■	■	■	■
Immobilizer Key System	■	■	■	■

■ Standard
□ Optional

¹Driving is serious business. Only use NissanConnectSM Mobile Apps when safe to do so. App availability is dependent upon vehicle model, trim level, packaging, and/or options. See Nissan.ca/NissanConnect for complete app availability details. Never program while driving. GPS mapping may not be detailed in all areas or reflect current road status. Compatible smartphone required. Cellular network and GPS signals not available in all areas and/or at all times. Cellular technology is evolving, and changes to cellular networks provided by independent companies are not within Nissan's control. Nissan is not responsible for associated costs that may be required for continued operation due to cellular network termination (including equipment upgrades, if available, or roaming charges on alternative networks). Should cellular provider terminate/restrict service, service may be terminated without notice and with no liability to Nissan and its agents or affiliates. Subscription Agreement required and terms and conditions of Subscription Agreement apply. See Nissan.ca/NissanConnect for details. Text rates and/or data usage may apply. ²Never program while driving. GPS mapping may not be detailed in all areas or reflect current road status. ³XM[®] and SiriusXM[®] Satellite Radio is available in the 10 Canadian provinces and the 48 contiguous United States. Basic monthly subscription required and sold separately after trial period. NavTraffic[®]/SiriusXM[®] Traffic is available in select North American markets. In Canada, at time of printing, incident and flow data is available for 12 metropolitan areas of Canada (Vancouver, Calgary, Edmonton, Toronto, Ottawa, Montreal, Quebec City, Hamilton, St. Catharines, Kitchener, Guelph, and London). Subscription sold separately after trial period. All subscriptions subject to customer agreement at siriusxm.ca/terms. Fees and programming subject to change. ©2016 Sirius XM Canada Inc. The Sirius[®] XM[®] and SiriusXM[®] names and all related marks and logos are trademarks of Sirius XM Radio Inc. All other trademarks are the property of their respective owners. ⁴Availability of specific features is dependent upon the phone's Bluetooth[®] support. Please refer to your phone Owner's Manual for details. Bluetooth[®] word mark and logos are owned by Bluetooth SIG, Inc., and any use of such marks by Nissan is under licence. iPod[®] is a registered trademark of Apple, Inc. All rights reserved. iPod[®] not included.

DIMENSIONS/CAPACITIES/WEIGHTS/FUEL

Dimensions	S	SV	SR	SL
Exterior – mm (inches)				
Wheelbase				2600 (102.4)
Overall length				4157 (163.7)
Overall width				1695 (66.7)
Overall height				1537 (60.5)
Track width (front/rear)				1480 (58.3)/1485 (58.5)

Aerodynamics – Cd	S	SV	SR	SL
Drag coefficient (SR)				0.298 (0.310)

Interior (front/rear) – mm (inches)	S	SV	SR	SL
Head room				1037 (40.8)/964 (38.0)
Hip room				1233 (48.5)/1238 (48.8)
Leg room				1048 (41.3)/972.7 (38.3)
Shoulder room				1313 (51.7)/1318 (51.9)

Capacities	S	SV	SR	SL
Seating capacity				5
Interior passenger volume – L (cu. ft.)				2664.6 (94.1)
Cargo volume with rear seats up – L (cu. ft.)				532.4 (18.8)
Cargo volume with rear seats folded – L (cu. ft.)				1084 (38.3)
Fuel tank – L (Imp gal)				41.0 (9.0)

Curb Weights – kg (lbs.)	S	SV	SR	SL
Base total				
Manual transmission	1096 (2417)	1112 (2450)	–	–
Xtronic CVT [®]	1114 (2455)	1129 (2489)	1145 (2525)	1147 (2529)

2017 Fuel Economy Estimates – L/100 km (MPG)

City/Highway	S	SV	SR	SL
Manual transmission	8.6 (33)/6.6 (43)			
Xtronic CVT [®]	7.6 (37)/6.2 (46)			

– Actual mileage may vary with driving conditions – use for comparison only.

Nissan's environmental action plan focuses on several key areas. In addition to increasing production of Zero Emission vehicles like the 100% electric LEAF[®], we're improving fuel efficiency across our lineup, and reducing the environmental impact of manufacturing through energy-efficient practices in our plants.



NISSAN VERSA® NOTE®

Isn't it time you were passionate about the car you drive? Welcome to the 2017 Versa Note.

Follow Nissan Canada on:



**Innovation
that excites**

visit nissan.ca

Facebook® is a registered trademark of Facebook, Inc. Twitter® is a registered trademark of Twitter, Inc. YouTube® is a registered trademark of Google Inc. Instagram® is a registered trademark of Instagram, LLC.

All illustrations, photographs and specifications in this brochure are based on the latest product information. See actual vehicle for complete accuracy. Nissan Canada Inc. reserves the right to make changes at any time, without notice, in prices, colours, materials, equipment, specifications and models, and to discontinue models or equipment. For information on additional options and accessories, contact your Nissan Dealership. Registered trademarks are property of their respective owners.

At nissan.ca, you'll find a way to "build your own Nissan," a dealer locator, and more information about key Nissan support services. The Nissan names, logos, product names, feature names, and slogans are trademarks owned by or licenced to Nissan Motor Co. Ltd. and/or its North American subsidiaries. **Always wear your seat belt, and please don't drink and drive.** Printed in January 2017. Catalogue number: 99999-VERN17EN. ©2016 Nissan Canada Inc. All rights reserved.