

XT5

A PREMIUM CROSSOVER
INSPIRED BY
RESTLESS AMBITION



Cadillac

DARE GREATLY





THE NEXT STEP ON YOUR JOURNEY

Versatility reinvented. The XT5 crossover was crafted to help you master whatever task you have at hand. Its generously sized interior is filled with advanced features to help keep you safe and connected, while the chiseled exterior lines make a striking statement. A thoroughly progressive vehicle both inside and out, the XT5 was designed to accommodate your needs while expressing your distinctive sense of style.

The Cadillac XT5.



A black and white photograph of a city street, viewed from a low angle looking up. The street is flanked by tall, multi-story buildings. On the left, a building features a prominent water tower on its roof. The right side of the image shows a building with a series of balconies or window boxes. The sky is a uniform, bright white, creating a high-contrast scene. The overall mood is one of urban grandeur and verticality.

THE FEELING

ONLY THOSE WHO DARE
DRIVE THE WORLD FORWARD

APPRECIATE STRIKING LOOKS





REVEL IN SPACE THAT
SPEAKS VOLUMES

MAKE POSSIBILITIES UNFOLD



TAKE CONFIDENCE WITH YOU ON YOUR JOURNEY





READY FOR WHAT
LIES AHEAD

EMBRACE YOUR RESTLESS AMBITION.
THE CADILLAC XT5.





THE FEATURES

GREATNESS SHOWN
IN EVERY DETAIL

AN EXCEPTIONAL EXTERIOR. BEAUTIFULLY BALANCED.

Sleek in scale, large in ambition. The XT5 is a dynamic expression of a bold design aesthetic. Graceful planes of steel meet powerful curves and lines to create a sleek crossover unlike any other.

BODY DESIGN • GRILLE AND CREST • ILLUMINATED DOOR HANDLES • ALUMINUM WHEELS •
SIGNATURE LIGHTING





BODY DESIGN

Its sculpted body achieves more than simply a striking look. By pushing the wheel wells aggressively to the four corners of the vehicle, Cadillac engineers have created generous space, as well as supremely balanced structure for remarkable control and driving.

GRILLE AND CREST

Symbols of substance. The grille and crest are prominently featured as potent symbols. Exuding power and elegance, both are key elements of a vehicle at the forefront of style, substance and innovation. The XT5 Platinum model has an even more sophisticated exterior look with a unique grille, front and rear stainless-steel skid plates and a silver dual exhaust.



ILLUMINATED DOOR HANDLES

Highlighting design. Lighting within the door handles improves visibility while enhancing the vehicle's long lines.

ALUMINUM WHEELS

High style. Crafted with an innovative process that saves weight while increasing strength, the 20" aluminum wheels – standard on the Premium and Platinum models – allow the XT5 to stand apart on the road.

SIGNATURE LIGHTING

Visionary illumination. The front and rear light systems dramatically frame the sweeping curves and powerful edges. They also employ some of the automotive industry's most advanced LED technology to offer superior illumination.

AN INTELLIGENT INTERIOR. SMART AND SPACIOUS.

Distinctively modern. A wide dashboard melds cutting-edge technologies with timeless craftsmanship. Wood, leather and other materials have been chosen and fitted with a care reminiscent of fine tailoring. The result is beauty, comfort and utility.

AUTHENTIC MATERIALS • ENHANCED CABIN CONFIGURATION • SEAT COMFORT • WRAPPED IN SOUND •
REFINED STEERING WHEEL • TRI-ZONE AUTOMATIC CLIMATE CONTROL • ULTRAVIEW® SUNROOF





AUTHENTIC MATERIALS

A crafted cabin. Each of the hand-stitched, cut-and-sewn available interior combinations has been carefully created. Uniquely colored leathers and custom stained woods are paired for a rich, yet understated feel. Wherever you are going, arrive tastefully.

ENHANCED CABIN CONFIGURATION

Elegant ergonomics. The XT5 cabin is the result of decades of research and understanding of how drivers drive and want to interact with controls, functions and features. The shape, placement and feel of every dial, switch and interface have been designed to maximize convenience, comfort and utility. LED ambient lighting on the instrument panel, center console, foot wells, door trims and pull cups, map pockets and carpet sills invites passengers to relax.



SEAT COMFORT

Always a perfect position. The XT5's leather seats are designed to fit like a glove and crafted to create an environment that is as comfortable as it is stylish – with sophisticated custom stitching and perforated leather inserts. Power-adjust them to your personal seat position and you will enjoy every minute of your drive – no matter how long. The XT5 Premium and Platinum models offer automatic heated and cooled front-row seats, activated at the level required by the vehicle's interior temperature, while the second row of heated rear seats can warm your passengers on cooler days. The XT5 Platinum also features seats in Semi-Aniline leather for added comfort.

WRAPPED IN SOUND

Designed to impress. The Bose® Centerpoint® Surround Sound system, standard on all XT5 models, incorporates 14 high-performance speakers as well as digital amplifiers to achieve astonishing sound on the road. Bose® Active Noise Cancellation and AudioPilot® noise compensation technology support this unique experience.



REFINED STEERING WHEEL

Comfort comes full circle. Wrapped in leather, the standard wheel features power tilt and telescoping, while the integrated automatic heating elements provide the right temperature at the right time and keep your hands warm in cold weather. Controls for phone, speech recognition and audio – and for the standard cruise control – are always in reach.



TRI-ZONE AUTOMATIC CLIMATE CONTROL

Your environment, your way. The Tri-Zone Automatic Climate Control – standard on Premium and Platinum models – allows the driver, front passenger and rear passengers to adjust the temperature to their choosing.



ULTRAVIEW® SUNROOF

Share the wonder. Standard on all XT5 models, the UltraView® Sunroof spans both the front and rear seats and is equipped with a power sunshade should the sun be too intense.

THE WAY AHEAD

Drive smarter. The XT5 offers a suite of progressive technology features to help keep you aware and connected. From the Rear Camera Mirror to Cadillac CUE® with Apple CarPlay™ and Android Auto™ compatibility, the XT5 cabin contains a number of features designed to make every ride easier and more enjoyable.

REAR CAMERA MIRROR • SURROUND VISION CAMERA • HEAD-UP DISPLAY • RECONFIGURABLE GAUGE CLUSTER • CADILLAC CUE® • WIRELESS CHARGING • ONSTAR® 4G LTE AND BUILT-IN WI-FI HOTSPOT • PHONE INTEGRATION



Shown with Apple CarPlay™. App functionality varies by market.



REAR CAMERA MIRROR

Backward-looking, forward-thinking. Standard on the XT5 Platinum model, you can stream the view from a rear-mounted camera to the rear-view mirror with a single touch. This view (A) offers substantially more vision than an ordinary mirror, while a simple touch instantly reverts it to a traditional mirror (B). The camera has a self-cleaning feature to keep it functional in all weather conditions.



SURROUND VISION CAMERA

A brand-new perspective. Standard on the XT5 Platinum model, the Surround Vision provides a bird's-eye view of the area immediately surrounding the vehicle when in low-speed Drive or Reverse. This view, projected on the Cadillac CUE® screen, helps increase your awareness when parking or reversing.



HEAD-UP DISPLAY

Information – front, center, safer. A driver's attention is best focused on the road. That's why the XT5 Platinum model's standard Head-Up Display (HUD) projects, in full color, selected information – such as speed, traffic signs, navigation or media information – onto the windshield. This allows you to access that information without having to take your eyes off the road.

RECONFIGURABLE GAUGE CLUSTER

Individualized information. Customize the 8" LCD gauge display – standard on the XT5 Platinum – to one of two themes that combine vehicle data with navigation, entertainment and stunning 3D vehicle images.



CADILLAC CUE®

A gesture toward the future. Cadillac's signature CUE®¹ system allows you to access navigation, communications and connectivity functions with smartphone-like ease faster than ever before. For improved safety and satisfaction, the brilliant 8" front screen responds to touch, voice commands² and gestures.

CHARGING CONVENIENCE

Power up. With the conveniently located Wireless Charging and phone charging case, you can power your compatible phone whenever the vehicle is running.³



ONSTAR® 4G LTE AND BUILT-IN WI-FI HOTSPOT

Stay connected. The standard OnStar® 4G LTE and built-in Wi-Fi hotspot support up to seven mobile devices at 4G LTE speeds up to 15 meters away from your XT5.⁴



PHONE INTEGRATION

Your phone, even smarter. Phone Integration with Apple CarPlay™ compatibility allows you to access contacts, Apple Music™ and other information from your iPhone®. You can also use Siri®, so features are easily accessible to you.

Phone Integration also offers Android Auto™ compatibility and allows seamless voice-guided navigation with Google Maps™. When on the road, stream endless music on Google Play™, make phone calls or send and receive texts.⁵

¹ Full functionality requires compatible Bluetooth® and smartphone. Some devices require USB connectivity. ² Voice recognition is available in the following languages: English, French, German, Dutch, Italian, Polish, Danish, Portuguese, Spanish, Turkish and Russian. ³ The system wirelessly charges one PMA- or Qi-compatible mobile device. Mobile phone must support wireless charging functionality. ⁴ All OnStar services and Wi-Fi services will cease to be available on 31st December 2020. No trial or paid subscriptions or services, including emergency response services, will be available after that date. Some functions are not available in all countries abroad, or at the time of purchase. OnStar® services are provided by and require an account with OnStar® Europe Ltd. OnStar® services require activation and are subject to mobile network coverage and availability. Wi-Fi services are provided by and require an additional account with the nominated mobile network operator. The Wi-Fi trial has a time limit and capped data allowance. Charges apply thereafter. The OnStar® subscription packages could be different from the services included in the free trial package. Contact your Cadillac Partner or our Customer Care for details on availability, network coverage, specification, the length of the free trial period and charges. Terms and conditions apply. ⁵ Vehicle user interfaces are products of Apple and Google and their terms and privacy statements apply. Requires compatible smartphone and data plan rates apply. Android Auto™ requires a smartphone running Android Lollipop 5.0 OS or above; Apple CarPlay™ requires an iPhone 5 or later. Full lists of supported apps are available at Apple.com/ios/carplay and Android.com/auto. Please note that availability of apps may vary by market.

SUITS YOU AND EVERY PURPOSE

More room for what matters. The XT5 holds passengers comfortably, and cargo efficiently. The rear row can fold down along a 40-20-40 split or can be flexibly shifted back and forth for either increased cargo space or legroom.

An ingenious cargo management system – that can be concealed until it is needed – keeps your items secure.

This vehicle is designed to accommodate your needs and express a distinctive sense of style.

HANDS-FREE POWER LIFTGATE • CLOSE CONTROL • ADJUSTABLE CARGO MANAGEMENT SYSTEM • AUTOMATIC PARK ASSIST • SECOND ROW VERSATILITY • PASS-THROUGH CENTER CONSOLE • ILLUMINATED SILL PLATES • INTEGRATED ROOF RAILS • STANDARD TOWING PACKAGE





HANDS-FREE POWER LIFTGATE

Hands full, hands free. The hands-free power liftgate – standard on the XT5 Platinum model – allows you to open and close the trunk with a kicking motion under the left of the rear bumper, while a height memory function lets you program how high it opens, avoiding damage to the vehicle.

CLOSE CONTROL

From near or far. With Keyless Access, you can unlock the doors without touching the key fob. It also automatically locks the doors when you exit the vehicle. Adaptive Remote Start allows you to start the engine from up to 90 meters away. The system can also detect the ambient temperature and activate the heated and ventilated seats – standard on the Premium and Platinum models – accordingly.



ADJUSTABLE CARGO MANAGEMENT SYSTEM

Smart space. The XT5's generously spaced cabin features a variety of helpful options, such as the adjustable cargo fence that secures luggage and other items. An underfloor storage bin¹, equipped with hidden hooks for bags, provides additional space and security.

AUTOMATIC PARK ASSIST

An effortless arrival. Whether it's a front, rear, parallel or perpendicular parking space, the Automatic Park Assist – standard on the XT5 Platinum – guides you to an appropriately sized spot and helps steer into the space while you control the brakes and speed.



SECOND ROW VERSATILITY

Open to possibilities. Rear seating when you need it, space when you don't. The XT5 seats five, but when you need more space for cargo, the rear row can be folded down along a 40-20-40 split. Depending on the size of your cargo, you can arrange the sections in three different ways and still accommodate rear passengers. Or, for optimal flexibility, lay all three seats completely flat to create a best-in-class cargo capacity of up to 1 784 liters.



PASS-THROUGH CENTER CONSOLE

Simply superior design. The center console features a convenient, discreet 1.5-liter pass-through storage area. Illuminated, stylish and purposeful, it will surprise you with what it can do. And what you can do with it.



ILLUMINATED SILL PLATES

A step up. In the XT5 Platinum model this attractive display also serves the function of providing additional lighting as people enter or exit the vehicle.



INTEGRATED ROOF RAILS

The accent is on utility. Integrated roof rails visually reinforce strong lines and, when paired with available cross rails, create another option for cargo.

STANDARD TOWING PACKAGE

Pull effect. The XT5 has a maximum towing capacity of 2 000 kg and its towing mechanism is equipped with a detachable towing hook.

| PERFORMANCE • EFFICIENCY • HANDLING

POWER AND CONTROL AT YOUR COMMAND

A wise use of power. The engine activates or deactivates cylinders as performance and efficiency demand. The transmission seamlessly employs eight gears to infinite advantage while its AWD system directs torque to the wheels that will use it best. The XT5 makes driving a singular delight.

ELECTRONIC PRECISION SHIFT • INTELLIGENT ALL-WHEEL DRIVE • 3.6L V6 ENGINE •
8-SPEED TRANSMISSION • AUTO-DRY BRAKES • ACTIVE FUEL MANAGEMENT™ •
REAL-TIME DAMPING SUSPENSION





ELECTRONIC PRECISION SHIFT

A higher standard of control. In the XT5, Electronic Precision Shift made its Cadillac debut. This push-button technology lets you move from Park to Drive more quickly, while reducing noise and vibration.

INTELLIGENT ALL-WHEEL DRIVE

A firm grip on innovation. All-Wheel Drive delivers a superior driving experience. A twin-clutch – with a streamlined design – eliminates intrusion into the passenger area while enhancing launch performance and cornering, especially in adverse weather conditions.

3.6L V6 ENGINE

Smart power. 314 hp (231 kW).¹ 368 Nm of torque. Statistics tell only part of this advanced power plant's story. It is also equipped with intelligent technologies like Active Fuel Management™ and Cadillac's Auto Stop/Start feature. The former deactivates engine cylinders when less power is needed, the latter automatically stops and starts the engine when the vehicle is stopped in traffic. Both promote greater efficiency, decreased emissions and all-around driver satisfaction.

8-SPEED TRANSMISSION

High-tech, high gear. An advanced 8-speed transmission allows for quick shifts between gears for better performance and efficiency. It also takes advantage of Cadillac Performance Algorithm Shifting to seamlessly select the best gear for quicker shifts and greater responsiveness.

AUTO-DRY BRAKES

Innovation that never stops. When the windshield wipers are activated, this feature automatically positions the brake pads closer to the discs to sweep away moisture and improve brake performance.

ACTIVE FUEL MANAGEMENT™

To use fuel most intelligently, Active Fuel Management™ automatically and imperceptibly deactivates two of its engine's six cylinders when their power isn't needed. When it is, all six cylinders are activated instantly and seamlessly.

REAL-TIME DAMPING SUSPENSION

Read the road. Every two milliseconds, available Real-Time Damping adjusts the front struts and rear shock absorbers to road and driving conditions for a more precise ride. Customize your driving experience with driver-selectable driving modes: Tour, Sport and Snow/All-wheel drive.

ON ANY JOURNEY, CONFIDENCE IS KEY

Confidence, your constant companion. Comprehensive technologies are available to keep watch to the front, rear and side, automatically manage brakes and even monitor the weather. These are just a few examples of this remarkable vehicle's many available innovative safety features.

FRONT PEDESTRIAN DETECTION • FORWARD COLLISION ALERT • TRAFFIC SIGN RECOGNITION •
REAR CROSS-TRAFFIC ALERT • SURROUND VISION • SIDE BLIND ZONE ALERT • LANE KEEP ASSIST •
FRONT AND REAR AUTOMATIC BRAKING • ADAPTIVE CRUISE CONTROL • SAFETY ALERT SEAT •
ELECTRONIC STABILITY CONTROL SYSTEM • RAINSENSE WIPERS • INTELLIBEAM® • ONSTAR®





FRONT

HELP KEEP AN EYE ON PEDESTRIANS

Front Pedestrian Detection uses a camera to scan the road ahead. If a pedestrian is detected, indicators and alerts activate and, if necessary, the vehicle brakes automatically to help avoid a collision.

TRULY FORWARD-THINKING

Forward Collision Alert monitors the traffic ahead, alerting you to imminent danger.

ALWAYS AWARE

With Traffic Sign Recognition, you can dedicate your full attention to the road. Speed limit information and no-overtaking signs are displayed in the instrument cluster or on the Head-Up Display, standard on the XT5 Platinum.

REAR

BE ALERTED EVEN IN REVERSE

When backing out of a parking space, standard Rear Cross-Traffic Alert warns of oncoming traffic to either side of your vehicle.

A HIGHER FORM OF SAFETY

Standard on XT5 Platinum, Surround Vision provides a bird's-eye view of the area immediately surrounding the vehicle when in low-speed Drive or Reverse. This view, projected on the Cadillac CUE® screen, helps increase your awareness when parking or reversing.

SIDE

ALL CLEAR

Standard Side Blind Zone Alert monitors your blind spots, so if another vehicle is in the adjacent lane, an icon in the side mirror illuminates to alert you.

TRAVEL STRAIGHT AND SMART

If you are not signaling, Lane Keep Assist gently turns the steering wheel if you approach a detected lane marking and Lane Departure Warning alerts you if you drift into another lane.

INSIDE

GAIN PRECIOUS TIME

Up to certain speeds, Front and Rear Automatic Braking can sense potential front and rear collisions and automatically engage the brakes – giving you more reaction time.

SAFE SPACE

XT5 Platinum offers Adaptive Cruise Control as standard. It employs front radar technology to maintain a selected distance between you and the vehicle ahead.

DANGER DETECTED

Discreet, invaluable. If it senses the possibility of a collision, Cadillac's patented Safety Alert Seat sends a discreet pulse to the driver's seat, indicating the direction of the threat – left, right or both.

Safety features are no substitute for the driver's responsibility to operate the vehicle in a safe manner. The driver should remain attentive to traffic, surroundings and road conditions at all times. Read the vehicle Owner's Manual for more important safety information. **The Driver Awareness Package**, standard on XT5 Premium and Platinum models, includes the following safety features: Safety Alert Seat, Forward Collision Alert, Following Distance Indicator, Lane Keep Assist with Lane Departure Warning, Front Pedestrian Detection, Front Automatic Braking, IntelliBeam® headlamps and Traffic Sign Recognition. **The Driver Assist Package**, standard on XT5 Platinum model, includes the following additional safety features: Adaptive Cruise Control, Automatic Safety Belt Tightening, Automatic Park Assist, Automatic Collision Braking and Front and Rear Automatic Braking.



A MORE SURE FOOTING

When driving in low-traction conditions like on snow, in the rain or on gravel, the Electronic Stability Control System enhances your grip. StabiliTrak® automatically applies brake pressure and reduces engine torque, helping you keep on track and in control.

A SENSE FOR RAIN

The smart, front Rainsense Wipers automatically engage when rain is detected. They also adjust their speed to the intensity of the rain. The rear wiper is integrated into the rear spoiler to maintain the sleek lines of the XT5.



SMARTER LIGHTS

High beams, higher thinking. To improve safety, the XT5 Premium and Platinum are equipped with Intelli-Beam®. These intelligent headlamps automatically activate or deactivate the high beam according to outside conditions. The system also dips the high beam when it senses taillamps or approaching headlamps.

ACCESS TO SAFETY AND SERVICES

Securely connected. No matter where you are headed, OnStar® helps keep you safe and ready for the journey. For instance, Automatic Crash Response¹ is standard for the first year. So, if the unexpected happens, you are not on your own.²

¹ OnStar® emergency assistance services are not e-Call services for the purposes of the e-Call Regulation. Currently, no Cadillac models fall under the pan-European e-Call requirement. Should models do so, they will be equipped with an e-Call system. OnStar® acts as a link to existing emergency service providers. Vehicles may not all transmit all crash data. ² All OnStar services and Wi-Fi services will cease to be available on 31st December 2020. No trial or paid subscriptions or services, including emergency response services, will be available after that date. Some functions are not available in all countries abroad, or at the time of purchase. OnStar® services are provided by and require an account with OnStar® Europe Ltd. OnStar® services require activation and are subject to mobile network coverage and availability. Wi-Fi services are provided by and require an additional account with the nominated mobile network operator. The Wi-Fi trial has a time limit and capped data allowance. Charges apply thereafter. The OnStar® subscription packages could be different from the services included in the free trial package. Contact your Cadillac Partner or our Customer Care for details on availability, network coverage, specification, the length of the free trial period and charges. Terms and conditions apply.

ONSTAR®

No matter where you are headed, OnStar® services keep you feeling safe, connected and cared for. A touch of a button connects you to a qualified advisor, not a machine, accessible 24/7, 365 days a year virtually everywhere in Europe. OnStar® gives you access to premium features such as Automatic Crash Response, your own Personal Assistant and a fast, in-car 4G LTE Wi-Fi Hotspot. What's more, OnStar® services are free of charge for the first 12 months.^{1,2,3,4}

SAFE

AUTOMATIC CRASH RESPONSE.

In case of an accident, OnStar® advisors automatically connect to your car. If needed, they immediately brief the emergency services with passenger and key car information and can direct them to your exact location.^{1,4}

24-HOUR EMERGENCY CALL SERVICE.

You, a passenger or a passer-by not feeling well? Push the red SOS button and our advisors will be sure to send help right away.¹

ROADSIDE ASSISTANCE.

If you have a flat tire or a warning light on the dashboard, just contact our advisors and they will send Roadside Assistance to your location, if required. This is even more valuable in areas with weaker mobile phone coverage or if your smartphone's battery is flat.^{1,5}

STOLEN VEHICLE ASSISTANCE.

In case your car gets stolen, OnStar® blocks the ignition so the car cannot be restarted again and provides the police with GPS data to help retrieve your car safely.¹

CARED FOR

HOTEL BOOKING.

Plans changed? Or too tired to keep driving? Let OnStar® advisors take care of your hotel booking en route, powered by Booking.com. Just press the blue Service button.^{1,6}

DESTINATION DOWNLOAD.

No more address typing! OnStar® advisors can assist you in finding an alternative route, a restaurant or a gas station. They will remotely download the address to your built-in navigation system, too.¹

VEHICLE DIAGNOSTICS.

Not sure what a warning light on the dashboard means? Just ask the advisors to remotely check key systems in your car, in real time. At your request, OnStar® can also send you a monthly email showing your car's oil level, tire pressure and other data, to help you stay in control.¹

PARKING SERVICE.

Never search for a parking space again! Via Parkopedia, OnStar® finds and leads you to the next vacant parking spot. This way, you already know availability and parking fees before you get there.^{1,7}

CONNECTED

4G LTE AND WI-FI HOTSPOT.

Enjoy the benefits of fast and stable internet access on board, with an integrated Wi-Fi hotspot for up to 7 devices. So the content you want will be headed where you are – thanks to the most powerful OnStar® connection yet.^{1,2,3}

YOUR PRIVACY. YOUR CALL.

With the Privacy button, you are in control of what OnStar® can and cannot do. Mask your location whenever you want and reveal it again if you change your mind. Only in an emergency can OnStar® override this.⁸

ABOUT THIS BROCHURE

The information contained in this brochure was accurate at the time of going to press (January 2019). Availability, technical features and equipment provided on our vehicles can vary from one country to another and may change without prior notice. The vehicles shown in this brochure are for illustration purposes only. European specifications may vary. Some illustrations feature equipment that is not included in every model. The colors printed in the brochure only approximate actual colors. Information on recycling design and End of Life Vehicles (ELV) can be found on cadillaceurope.com.

For precise information on the equipment provided on our vehicles, please contact your local Cadillac Partner. This material shall not be reprinted, in whole or in part, without the express written permission of General Motors. We have tried to make this brochure comprehensive and factual. We reserve the right, however, to make changes at any time, without notice, to prices, colors, materials, equipment, specifications, models and availability. Specifications, dimensions, measurements, ratings and other numbers in this brochure and other printed materials provided at the dealership or affixed to vehicles are approximates based upon design and engineering drawings and prototypes and laboratory tests. Your vehicle may differ due to variations in manufacture and equipment. As some information may have been updated since the time of printing, please check with your Cadillac Partner for complete details. Any variations in colors shown are due to reproduction variation in the printing process. Cadillac reserves the right to lengthen or shorten the model year for any product for any reason, or start and end model years at different times. Please note that not all trims, colors or options might be available in your market. Please check with your nearest Cadillac Partner for availability.

OWNER BENEFITS

We have created a comprehensive suite of owner benefits, providing everything our Cadillac owners need and everything they deserve.

CADILLAC SERVICE

Whether you are at home or on the road, our Cadillac Partners are there to offer you truly personal assistance. Count on them to arrange service appointments, answer questions about your new Cadillac and ensure you are always satisfied with your ownership experience. To find your nearest Cadillac Partner, visit cadillaceurope.com

WARRANTY

Every Cadillac is built to the highest standards and is manufactured with the utmost care. As a Cadillac owner, you can expect nothing less than premium service and protection. Should you experience defects in materials or through deficient workmanship your entire vehicle is backed by our no excess, Bumper-to-Bumper, Limited Cadillac Warranty for three years or 100 000 km – whichever comes first, plus a 6-year anti-perforation corrosion warranty. Should the vehicle change owner, the warranty transfers automatically during the warranty period.

ROADSIDE ASSISTANCE

Cadillac Assistance provides assistance to Cadillac owners with a wide range of services 24 hours a day, 365 days a year, throughout Europe. These services are available for a period of 36 consecutive months, beginning with the initial "In-Service Date" of each eligible vehicle. Ask your local Cadillac Partner for details.

	CO ₂ EMISSIONS COMBINED (G/KM)	FUEL CONSUMPTION (L/100 KM)			FUEL-EFFICIENCY CATEGORY						
		URBAN	EXTRA-URBAN	COMBINED	BE	CH	DE	DK	FR	LU	NL
3.6L V6 AWD	229	14.1	7.8	10.0	G	G	E	G	F	G	F

All data are for base models with standard equipment. The calculation of fuel consumption according to 2007/715/EU (NEDC) is based on the empty weight, measured in accordance with this directive. The addition of extra equipment may cause consumption and CO₂ emissions to be slightly higher than indicated. The CO₂ emissions data do not refer to specific vehicles and are not part of a commercial offer.

©2019 General Motors. All rights reserved. GM, the GM emblem, Cadillac, the Cadillac Crest, OnStar, the OnStar emblem and the slogans, emblems, vehicle model names, vehicle body designs and other marks appearing in this brochure are the trademarks and/or service marks of General Motors, its subsidiaries, affiliates or licensors. Apple, iPhone and Apple CarPlay are trademarks of Apple Inc., registered in the U.S. and other countries. Android is a trademark of Google, Inc. Bose and Centerpoint are registered trademarks of Bose Corporation. Blu-ray is a trademark of Blu-ray Disc Association. www.cadillaceurope.com, Cadillac Europe GmbH, a company registered under the laws of Switzerland and having its registered office at Boulevard Lillienthal 6, 8152 Glattpark.

1. All OnStar services and Wi-Fi services will cease to be available on 31st December 2020. No trial or paid subscriptions or services, including emergency response services, will be available after that date. OnStar® services require activation and account with OnStar® Europe Ltd. Charges apply after applicable trial period. All services subject to mobile network coverage and availability. The OnStar® subscription packages could be different from the services included in the free trial package. Contact your Cadillac Partner or our Customer Care for details about availability, network coverage, specification, the length of the free trial period and charges. Terms and conditions apply. **2.** Once available, Wi-Fi services are provided by and require an additional account with the nominated mobile network operator. Wi-Fi trial has time limit and capped data allowance. Charges will apply thereafter. All services subject to mobile network coverage and availability. **3.** Excluding Wi-Fi hotspot services – for availability and applicable free trial periods for the Wi-Fi hotspot services, please check with your Cadillac Partner or our Customer Care. Contact your Cadillac Partner or our Customer Care for details about availability, network coverage, specification, the length of the free trial period and charges. Terms and conditions apply. **4.** OnStar® emergency assistance services are not e-Call services for the purposes of the e-Call Regulation. Currently, no Cadillac models fall under the pan-European e-Call requirement. Should models do so, they will be equipped with an e-Call system. OnStar® acts as a link to existing emergency service providers. Vehicles may not all transmit all crash data. **5.** OnStar® will direct a professional breakdown recovery team to your location. If your car is within the Cadillac New Vehicle Roadside Assistance coverage period, OnStar® will connect with the Cadillac Roadside Assistance service, who will send help free of charge, subject to the Cadillac Roadside Assistance terms and conditions. If your vehicle is outside the coverage of the Cadillac New Vehicle Roadside Assistance service, the provider of the breakdown recovery service may apply charges for the services provided. **6.** An OnStar® advisor can help you to book a hotel room using Booking.com, subject to the Booking.com user terms and privacy statement, which can be found on the Booking.com website, and the applicable terms and conditions for your hotel. OnStar® helps you make a booking and is not responsible for the services provided by Booking.com or the applicable hotel. Email address and credit card required. **7.** Only available for car parks listed in Parkopedia.com. Availability applies only to the moment of contact with OnStar®. **8.** In events such as a crash or if your vehicle is stolen.

INTERIOR COMBINATIONS

JET BLACK¹
LEATHER SEATING SURFACES WITH MINI-PERFORATED INSERTS



JET BLACK ACCENTS



LUNAR BRUSHED ALUMINUM



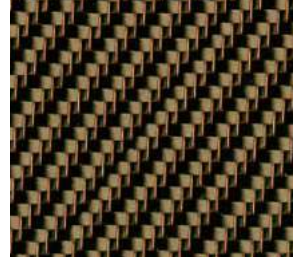
JET BLACK²
SEMI-ANILINE FULL-LEATHER SEATS WITH CHEVRON-PERFORATED INSERTS



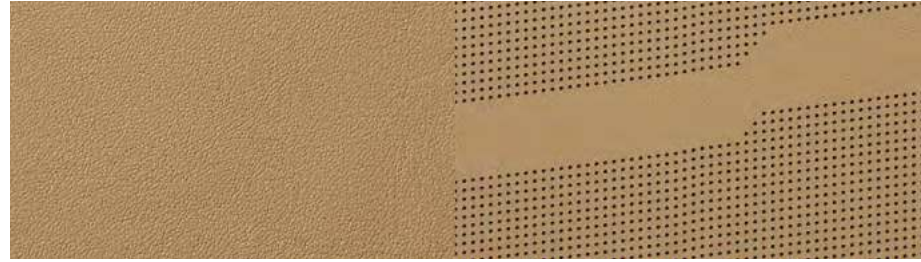
JET BLACK ACCENTS



BRONZE CARBON FIBER



MAPLE SUGAR²
SEMI-ANILINE FULL-LEATHER SEATS WITH CHEVRON-PERFORATED INSERTS



JET BLACK ACCENTS



SATIN ROSEWOOD



WHEELS



18" ALUMINUM WITH BRIGHT MACHINED FINISH AND LIGHT ARGENT ACCENTS
Standard on XT5 Luxury



20" ALUMINUM WITH STERLING SILVER PAINTED FINISH
Standard on XT5 Premium

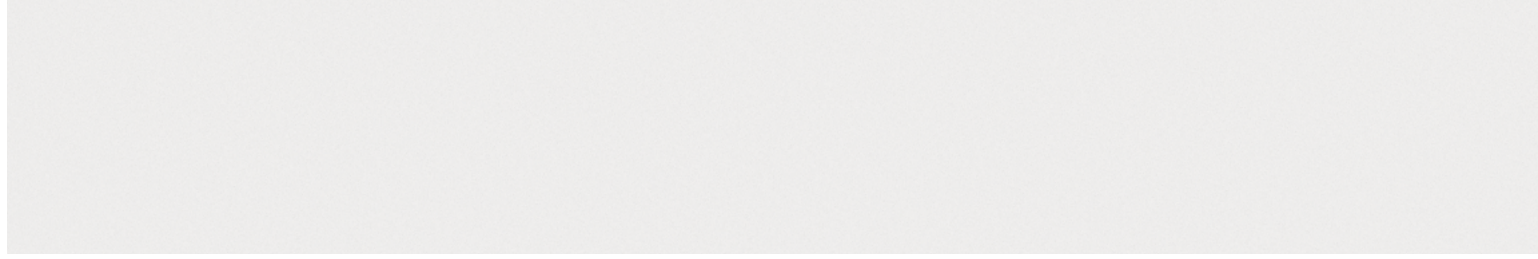


20" ALUMINUM FULLY POLISHED FINISH IN 12-SPOKE DESIGN
Standard on XT5 Platinum

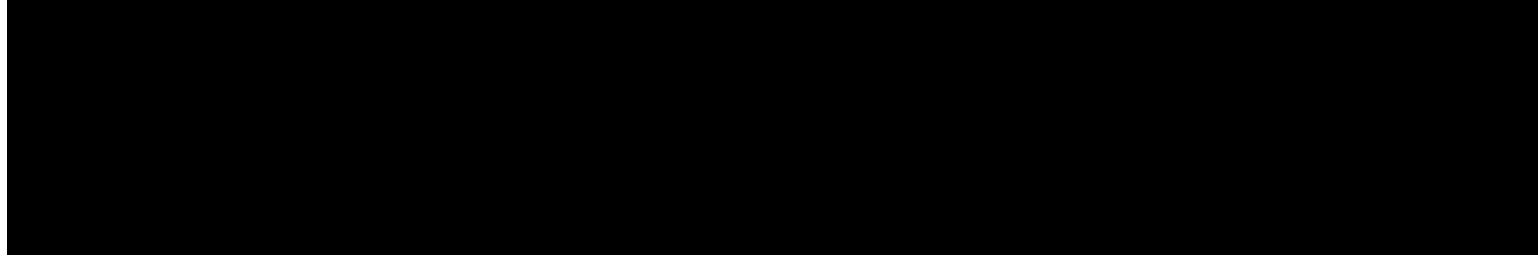
1. Standard on XT5 Luxury and Premium. **2.** Standard on XT5 Platinum.

EXTERIOR COLORS

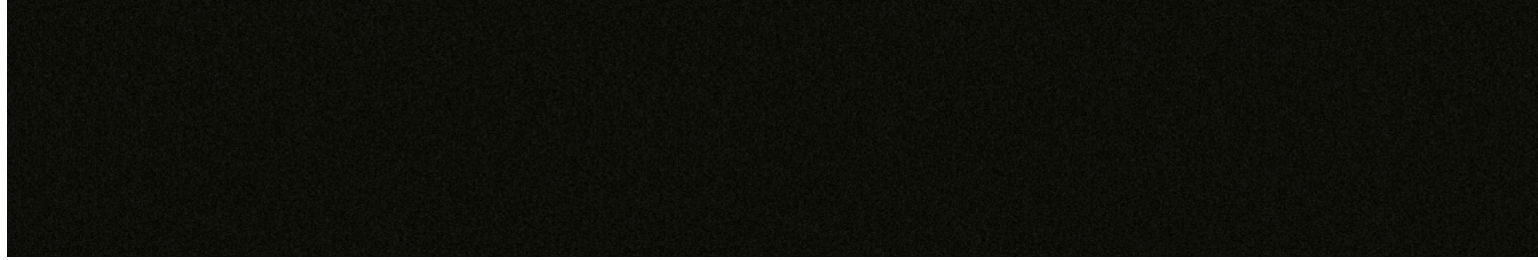
CRYSTAL WHITE TRICOAT^{1,2}



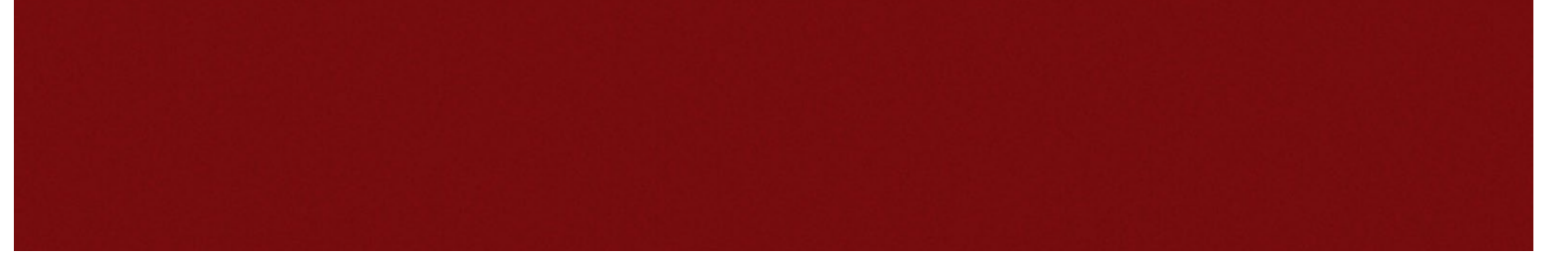
STELLAR BLACK METALLIC



DARK GRANITE METALLIC¹



RED PASSION TINTCOAT^{1,2}



HARBOR BLUE METALLIC^{1,2}



