

AURIS



TOYOTA

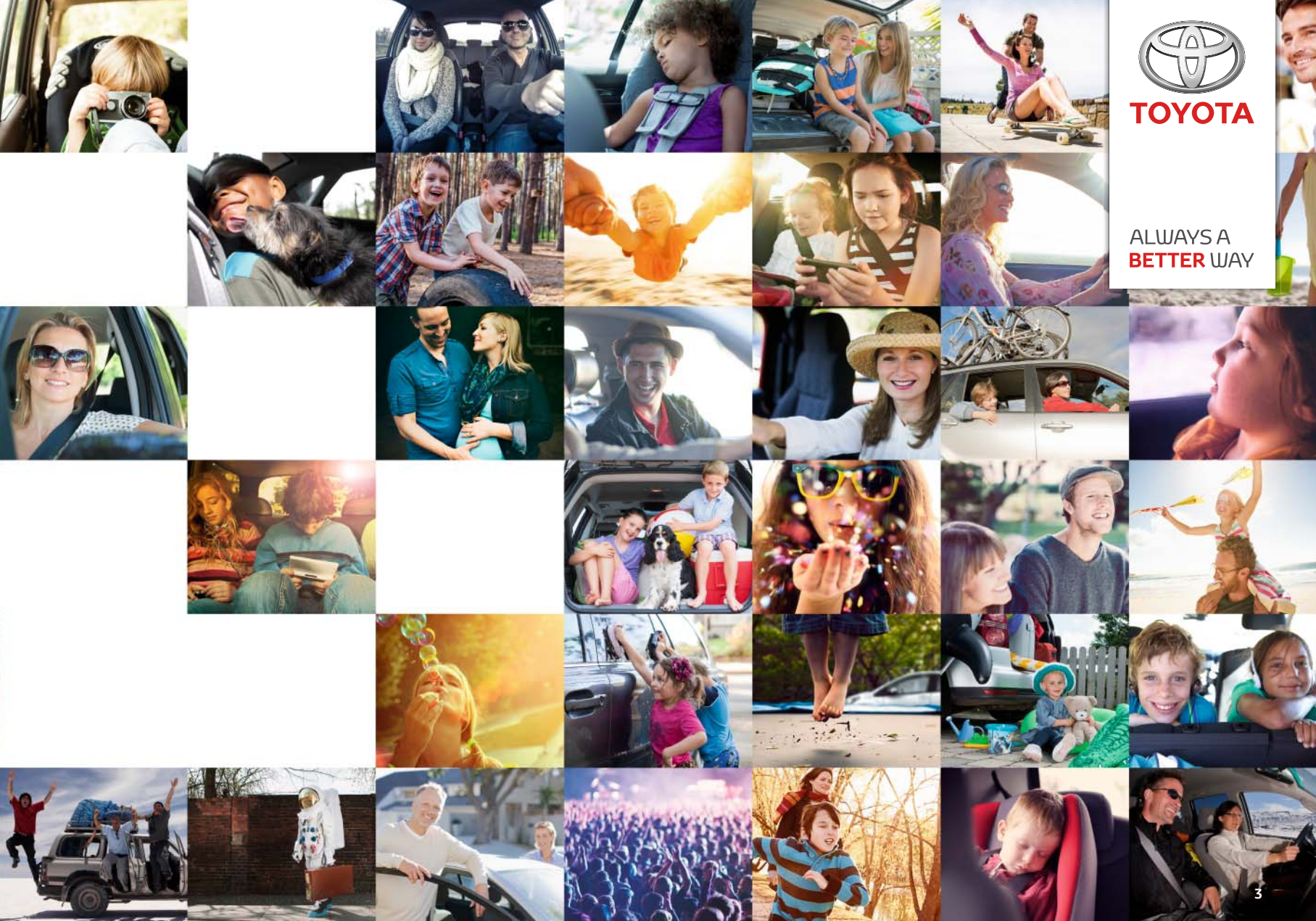
ALWAYS A
BETTER WAY

TOYOTA BETTER HYBRID HAPPY TOGETHER YOU

EVERY DAY WE LOOK AHEAD, MOVE FORWARD, EVOLVE. OUR PASSION IS ALWAYS TO DELIGHT – WITH A CAR THAT EXCEEDS EXPECTATIONS, THRILLS, EXCITES, REASSURES AND DELIVERS BETTER FOR TODAY'S WAY OF LIFE.

TOYOTA. ALWAYS A **BETTER** WAY





TOYOTA

ALWAYS A
BETTER WAY

AURIS

Better drive... Better life.



Model shown: Auris Touring Sports – Hybrid Style.



WITH THE TOYOTA EXPLORE APP, THERE IS SO MUCH MORE EXCLUSIVE CONTENT TO DISCOVER.

- 1. Simply download the free Toyota Explore app to your smartphone or tablet from the App Store or Google play.**
- 2. Open the app. Point your device at the page wherever you see the above icon and press scan.**
- 3. Explore the Auris in more detail.**

CONTENTS

6	Hybrid	16	Safety	32	Wheels	48	Glossary
8	Design	18	Grades	34	Seat trims	50	Peace of mind
10	Interior	26	Accessories	36	Specifications	52	Environment
14	Engines	30	Colours	41	Equipment		





UPLIFTING EFFECT

Love driving with hybrid.

Get behind the wheel of a new Auris Hybrid and you're sure to fall in love with driving again. From the moment you set off, a hybrid puts a big smile on your face, soothing away the stresses of busy traffic giving you a quiet, smooth drive. You'll love its responsiveness too, encouraging you to explore the open road and the joy that freedom to roam can bring. Driving a hybrid is intuitive, just get in, start the engine and press the accelerator. It really is that easy. Every hybrid adventure begins this way: where will you choose to go?



Model shown: Auris Touring Sports – Hybrid Style.





Scan this page.
Explore Auris
colours and
grades.

ATTRACT ATTENTION

Designed to be desirable.

The new Auris has a fresh and attractive look. Whether it's the bold, finely styled new LED headlamps, or the dynamic design front and back, new Auris is a car that'll brighten your day from the moment you set eyes on it. Thanks to a wider, confident stance on the road, combined with a distinct sporting flair to the design, it visually expresses how every journey is more enjoyable in an Auris. And with an Auris Touring Sports available featuring ample luggage space of up to 1,658 litres and superb versatility, you can enjoy the style of new Auris without compromising on your needs.

Model shown: Auris Touring Sports – Hybrid Style.

DESIGNED FOR YOU

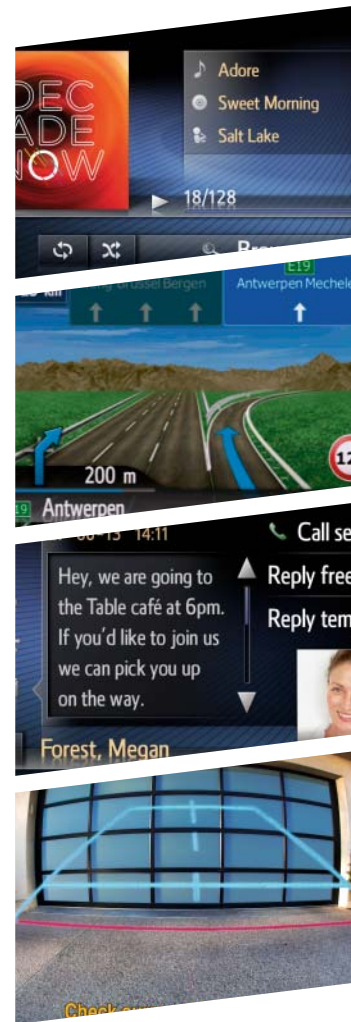
Comfort and style within.



Scan this page.
Discover driver
technology
close up.



New Auris has a clear focus: you, the driver. With an innovative integrated dashboard, it effortlessly mixes intuitive functionality with a stylish design that will captivate you from the moment your hands touch the steering wheel. At its heart is the seamlessly integrated Toyota Touch® 2 with 7" screen, your window to a whole world of music and multimedia features. It works seamlessly with a new 4.2" colour TFT screen in the instrument panel that displays trip data, navigation commands and Toyota Safety Sense information. Together, they make driving safer and more enjoyable.



Control your own music via the Toyota Touch® 2 screen. Connect your devices remotely from Bluetooth® or through a USB socket. Album, artist and track information are displayed on screen for your convenience.

Find your way with clear mapping and concise directions, and benefit from real-time traffic updates, eco-friendly route guidance, speed limit and speed camera warnings, Google local search and Google Street View™, weather updates, parking availability and fuel price information.

Keep in touch safely with hands-free technology. Connect up to five mobile phones, see your SMS messages on screen and access your phonebook.

Take the stress out of reverse parking. On the colour screen you'll see exactly what's behind you when reversing, with static guide lines to make manoeuvring easier.



SPACE AND HARMONY

The appeal of roominess.

Toyota strives to make every journey better, and at the core of that aim is your comfort. New Auris features comfortable seats, and an interior trimmed with rich, quality materials. The spacious interior of Auris immediately puts you at ease, and with the Toyota Skyview®, you can let the natural light flood in. The Easy Flat system*, which allows you to fold the seats at the touch of a button, and numerous storage options including an ingenious double floor in the load bay, mean the new Auris is emphatically practical. And if it's even more space you're after, the Auris Touring Sports offers even more luggage space, with a 2-way tonneau cover and a partition net included.

* Auris Touring Sports only.

Model shown: Auris Touring Sports – Hybrid Style.



Scan this page.
See the versatile
interior in
action.



RAISE YOUR SPIRITS

An engine for everyone.

New Auris features three advanced engine options for a drive you'll love: hybrid, petrol and diesel, providing the ideal solution for every driver. Calm, quiet and smooth, the responsive Hybrid powertrain leaves you feeling relaxed and refreshed on every journey. In addition to the hybrid, the Auris is now available with a new 1.2 l turbo petrol engine. It possesses the excellent economy you might expect from one so small; but the sparkling performance and low-end torque might just surprise you. And just as impressive is the new 1.6 l D-4D, which offers dynamic performance. With superb handling and hushed refinement, the new Auris is a car you'll look forward to driving, every day.

Model shown: Auris Touring Sports – Hybrid Style.

Power DIN hp	Fuel consumption* l/100 km	CO ₂ emissions* g/km	Acceleration 0–100 km/h secs.	Available on
116 1.2 l Turbo Petrol 6 M/T	4.8	112	10.1	Active, Style
116 1.2 l Turbo Petrol M/D S	4.6	106	10.5	Active, Style
90 1.4 l D-4D Diesel 6 M/T	4.0	105	12.5	Live, Active, Style
112 1.6 l D-4D Diesel 6 M/T	4.2	108	10.5	Active, Style, Lounge
99 1.8 l Petrol Hybrid e-CVT	3.5	79	10.9	Hybrid Live, Hybrid Active, Hybrid Style, Hybrid Lounge

Values based on hatchback. * Combined cycle. M/T = Manual transmission
e-CVT = electronically controlled Continuously Variable Transmission M/D S = Multidrive S



Scan this page.
Explore each
engine in more
detail.



Keeping you in safe hands.

In the new Auris, safety has been raised to new levels. Toyota Safety Sense adds advanced active safety systems for an even safer and more relaxed drive. Four active safety technologies, Pre-Collision System*, Lane Departure Alert, Automatic High Beam and Road Sign Assist are at the heart of Toyota Safety Sense. On top of that there is, of course, a wide range of additional innovative safety systems. For more information on Auris safety technologies, please refer to pages 46, 47 and 48, 49 or scan the QR code® on the opposite page.



Road Sign Assist

Toyota Safety Sense's Road Sign Assist monitors the road signs ahead, displaying useful information such as the current speed limit or overtaking restrictions in clear view on the new colour TFT cockpit display. The system also provides a visual and acoustic warning if you are not following the road sign indication.



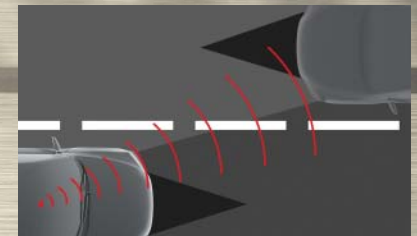
Lane Departure Alert

Using a camera to detect the lane markings in the road ahead, Toyota Safety Sense's Lane Departure Alert will alert the driver with audible and visual warnings if the vehicle starts to deviate from its lane without the turn indicator being applied – the driver can then take corrective action.



Pre-Collision System*

Toyota Safety Sense's Pre-Collision System uses a camera and laser to detect other vehicles in the road ahead. When the possibility of collision is detected the driver is alerted with audio and visual warnings, and brake assistance is activated. If the driver fails to brake in time the brakes automatically engage to prevent or mitigate a collision.

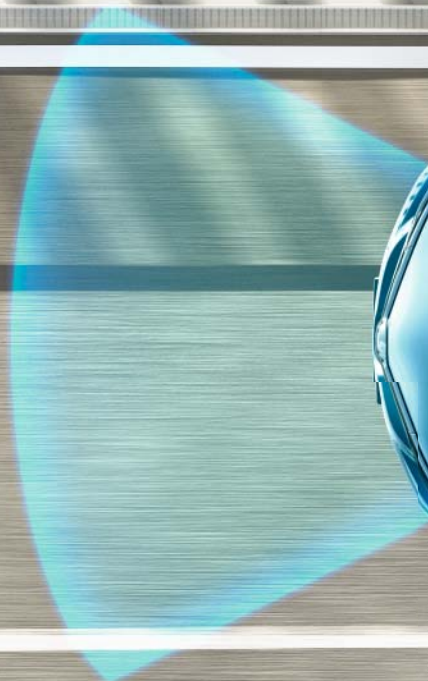


Automatic High Beam

Toyota Safety Sense's Automatic High Beam is designed to optimise visibility during night driving for all road users. A camera detects the lights of oncoming vehicles and leading traffic whilst also monitoring the brightness of street lights. It switches automatically between high and low beam for safer night-time driving.



Scan this QR code®.
Find out more on
Toyota Safety Sense.



* Technical name: Pre-Crash Safety System.

Live & Hybrid Live

Everything you need, and more than you expected. Live features automatic air conditioning, cruise control and daytime running lights (LED type) amongst a whole host of features.



Main features

- 15" alloy wheels (5 double-spoke)
- Piano Black surround on lower front grille
- Piano Black centre pillar design
- Shark-fin antenna
- Follow-me-home headlights
- Heated door mirrors
- Manually retractable door mirrors
- Daytime running lights (LED type)
- Cruise Control
- Dark grey/black fabric
- 3-spoke urethane steering wheel
- Automatic air conditioning
- 60:40 split-folding (2nd row) rear seats
- Radio and CD player with WMA and MP3
- Aux-in and USB connector integrated with radio and CD player

Model shown is Live.



Scan this QR code®.
Configure your Auris
Touring Sports.

Model shown is Hybrid Live.



Model shown is Hybrid Live.



Active & Hybrid Active

Active ramps up the desirability even further, with smart 16" alloy wheels on the outside, and features like a 3-spoke leather steering wheel and the Toyota Touch® 2 multimedia system inside the car.



Model shown is Active.



Model shown is Active.

Main features (additional to Live/Hybrid Live)

- 15" alloy wheels (5 double-spoke)*
- 16" alloy wheels (5 double-spoke)§
- Chrome window frame
- Privacy glass on rear windows*
- Rear-view camera
- Black/dark grey fabric
- 3-spoke leather steering wheel
- Rear-view camera display
- Static guide lines on rear-view camera display
- Sliding armrest on front console box
- Toyota Touch® 2 multimedia system
- Aux-in connector
- USB connector
- Stop & Start System**

Optional features Active

- 17" machined-face alloy wheels (5 double-spoke)
- Privacy glass on rear windows§
- Toyota Skyview®
- LED headlamps

Optional features Hybrid Active

- 16" alloy wheels (5 double-spoke)*
- 17" machined-face alloy wheels (5 double-spoke)
- Privacy glass on rear windows§
- Toyota Skyview®
- LED headlamps

* Touring Sports.

§ Hatchback.

° Hybrid Active.

** Active.



Model shown is Hybrid Active.



Style & Hybrid Style

Style radiates modern, dynamic design throughout, with every consideration given to your comfort. It's the style of a true individual, with 17" machined-face alloy wheels, rear privacy glass and the powerful illumination of LED headlamps.



Model shown is Style.



Model shown is Style.

Main features (additional to Active/ Hybrid Active)

- 17" machined-face alloy wheels (5 double-spoke)
- Privacy glass on rear windows*
- LED headlamps
- Black fabric/dark blue Alcantara® inserts
- Front sports seats
- Driver & passenger seatback pockets

Optional features Style & Hybrid Style — Toyota Skyview®

* Hatchback.



Model shown is Hybrid Style.



Scan this QR code®.
Configure your Auris.



Model shown is Hybrid Style.



Lounge & Hybrid Lounge

The Lounge effect begins from the moment you approach the car, with Toyota's Smart Entry & Start System. Dual-zone automatic air conditioning and heated driver and front passenger seats make every journey a luxurious experience.



Model shown is Lounge.



Model shown is Lounge.

Main features (additional to Active/ Hybrid Active)

- 17" alloy wheels (5 double-spoke)
- Privacy glass on rear windows*
- Chrome surround on lower front grille
- Smart Entry & Start System
- LED headlamps
- Simple Intelligent Parking Assist (Simple IPA)
- Grey fabric/black or Golden Copper Alcantara® inserts
- Leather armrest on front console box
- Dual-zone automatic air conditioning
- Front sports seats
- Heated driver & front passenger seats
- Driver & passenger seatback pockets

Optional features Hybrid Lounge

- Toyota Skyview®
- Black leather

* Hatchback.



Model shown is Hybrid Lounge.



Model shown is Lounge.



Accessory packs

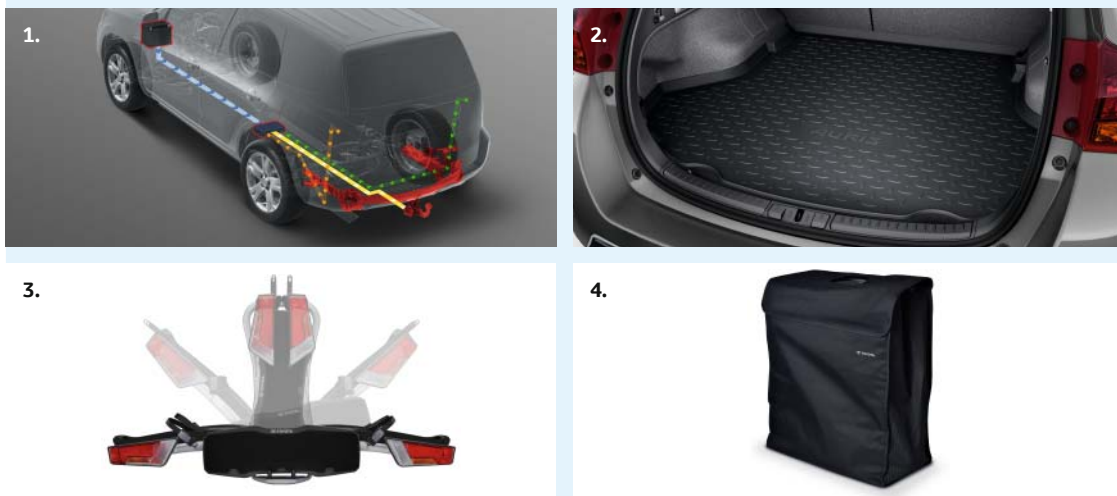
Chrome pack

- 1. Rear lower trunk garnish**
Highlights your car's distinctive rear-end with a dash of chrome.
- 2. Exhaust pipe finisher, for the Auris hatchback**
In durable chrome to make a design feature of the exhaust pipe.
- 3. Side door chrome garnish**
The stylish chrome garnish emphasises your car's side contours.



Activity pack

- 1. Towing hitch with wiring harness**
Safely integrates your car's lights with those on a towed trailer or the foldable bicycle holder.
- 2. Trunk liner**
Tough flexible plastic with raised edges for dependable trunk carpet protection.
- 3. Foldable bicycle holder**
Carries one or two bicycles and folds for easy installation, handling and storage. Includes a lights and licence plate holder.
- 4. Foldable bicycle holder bag**
Purpose-designed bag for carrying and storing the foldable bicycle holder.



Sport pack

1. 16" alloy wheels

A bold 5-spoke design in an anthracite colour with a machined face.

2. Exhaust pipe finisher, for the Auris hatchback
In durable chrome to make a design feature of your exhaust pipe.

3. Roof spoiler, for the Auris hatchback
An aerodynamic wraparound design with a sporty carbon fibre look.



Fleet packs

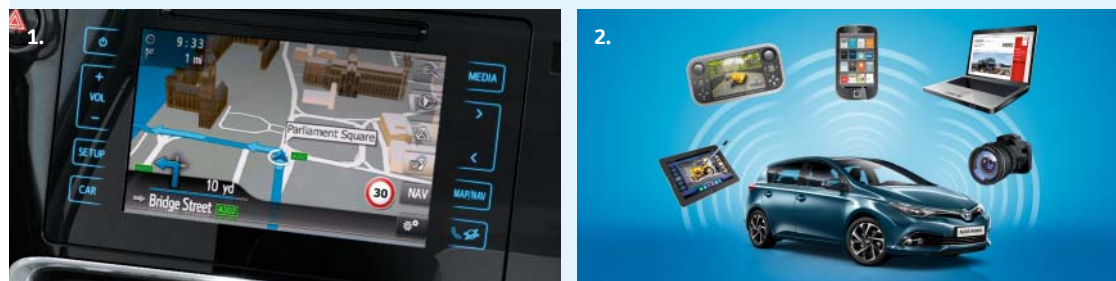
Business pack

1. Toyota Touch® 2 with Go Plus

Upgrades the Toyota Touch® 2 media system with pan-European navigation and the facility for online travel and entertainment apps.

2. Toyota Hotspot

Mobile connectivity for up to five WiFi devices simultaneously, including Toyota Touch® 2 with Go Plus, phones, tablets and laptops.



Residual value pack

1. Rear bumper protection plate, polished steel

Style and protection for bumper paintwork when loading or unloading the trunk.

2. Toyota parking assist

Front and rear bumper sensors linked with in-car beepers to warn of obstacles.

3. Trunk liner

Tough flexible plastic with raised edges for dependable trunk carpet protection.

4. Floor mats

Textile on a tough backing to protect cabin carpets. Non-slip fixings secure the driver's mat.



Exterior accessories

Exterior

1. Rear bumper protection plate, black plastic
With a wraparound edge for extra bumper paintwork protection when using the trunk.

2. Rear bumper protection plate, polished steel
Style and protection for bumper paintwork when loading or unloading the trunk.

3. Wind deflectors
Available as a front side windows set or a combined front and rear side windows set.

4. Roof rack, for the Auris hatchback
Strong yet lightweight aluminium design with integral security locking.

5. Ski box, Thule Motion 800, gloss black
For winter sports accessories. Opens from both sides and has multi-point central locking.

6. Crossbars, for the Auris Touring Sports
The bars lock onto pre-fitted roof rails and provide a secure base for roof-top loads.



Scan this QR code®.
Personalise your Auris.



Interior accessories

Interior

1. Rear entertainment system

Seat-back docking system with optional DVD player, cordless stereo headphones, holder for iPad® with optional adapter frame for iPad Air®, and a coat hanger.

2. Seat heater

Gently warms the front seats on those icy mornings and really cold nights.

3. Child restraint seat, Baby-Safe Plus

For babies from birth up to 13 kg. Includes a carry handle and retractable canopy.

4. Aluminium scuff plates

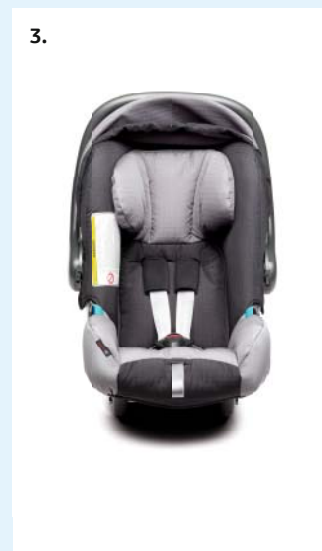
Side sill protection that also adds a compelling style detail to your car's interior.

5. Trunk guard with trunk divider, for the Auris Touring Sports

Divides the trunk space for two dogs, a dog and luggage, or two types of luggage.

6. Foot-well illumination

A subtle blue light that automatically turns on when the car doors are opened.



Scan this QR code®.
Personalise your Auris
Touring Sports.





Which colour are you?

With a broad range of colours in solid and metallic finishes, you can have your Auris in exactly the colour to suit you. Light or dark, what will you go for?



1F7 Ultra Silver*



3R3 Barcelona Red*



040 Pure White



070 Pearl White*



1G6 Granite Grey*



1H2 Dark Steel*



209 Night Sky Black*



4V8 Avantgarde Bronze*



8T5 Dark Blue*



8U6 Denim Blue*

* Metallic paint.



Your choice of wheels.

With fresh new designs, temptation awaits when choosing your new alloy wheels.



**15" steel wheels with wheel caps
(8-spoke)**
Standard on Live



15" alloy wheels (5 double-spoke)
Standard on Hybrid Live, Touring Sports
Active*, Touring Sports Hybrid Active

Accessories



**15" Mara silver alloy wheels
(5 double-spoke)**
Optional on all grades



**16" anthracite machined-
face alloy wheels
(5-spoke)**
Optional on all grades



16" steel wheels with wheel caps (8-spoke)
Standard on hatchback Active



16" alloy wheels (5 double-spoke)
Standard on hatchback Hybrid Active, optional on Touring Sports Hybrid Active



17" machined-face alloy wheels (5 double-spoke)
Standard on Style, Hybrid Style, Optional on Active, Hybrid Active



17" alloy wheels (5 double-spoke)
Standard on Lounge, Hybrid Lounge



16" Orion anthracite polished alloy wheels (5 double-spoke)
Optional on all grades



16" or 17" Podium II anthracite alloy wheels (9-spoke)
Optional on all grades



16" or 17" Podium II anthracite machined-face alloy wheels (9-spoke)
Optional on all grades



16" Athena silver alloy wheels (10-spoke)
Optional on all grades



17" Pitlane II anthracite alloy wheels (9 triple-spoke)
Optional on all grades



17" Pitlane II anthracite machined-face alloy wheels (9 triple-spoke)
Optional on all grades

* Not available on 1.6 I D-4D.



Sit comfortably.

With smart fabrics, leather choices and different colour accents across our grades, new Auris offers both attractive style and outstanding comfort whatever you choose.



Dark grey/black fabric
Standard on Live, Hybrid Live



Black/dark grey fabric
Standard on Active,
Hybrid Active



Black fabric/dark blue Alcantara® inserts
Standard on Style, Hybrid Style



Grey fabric/black Alcantara® inserts
Standard on Lounge, Hybrid Lounge



Black fabric/Golden Copper Alcantara® inserts
Standard on Lounge, Hybrid Lounge



Black leather
Optional on Lounge, Hybrid Lounge

Accessories



Black leather with blue double stitching
Optional on all grades



Black leather with white double stitching
Optional on all grades



Black leather with red double stitching
Optional on all grades



Black leather with silver grey double stitching
Optional on all grades

Specifications

ENVIRONMENTAL PERFORMANCE

ENVIRONMENTAL PERFORMANCE		1.2 l Turbo Petrol 6 M/T	1.2 l Turbo Petrol M/D S	1.4 l D-4D Diesel 6 M/T	1.6 l D-4D Diesel 6 M/T	1.8 l Petrol Hybrid e-CVT
Fuel consumption (applicable legislation)						
Combined driving (litres/100 km)	HB	4.8/5.4*	4.6/5.1*	4.0	4.2 [§] /4.3	3.5 [°] /3.6 [§] /3.9
	TS	4.8/5.5*	–	4.1	4.2 [§] /4.3	3.5 ^{§°} /4.0
Urban driving (litres/100 km)	HB	5.9/6.5*	5.5/5.9*	4.6	5.0 [§] /5.1	3.4 [°] /3.5 [§] /3.9
	TS	5.9/6.6*	–	4.8	5.0 [§] /5.1	3.5 ^{§°} /3.9
Extra urban driving (litres/100 km)	HB	4.2/4.8*	4.1/4.7*	3.6	3.7 [§] /3.8	3.4 [°] /3.5 [§] /3.9
	TS	4.2/4.8*	–	3.7	3.7 [§] /3.8	3.4 ^{§°} /3.9
Recommended fuel grade		95 unleaded petrol or higher	95 unleaded petrol or higher	48 cetane diesel or higher	48 cetane diesel or higher	95 unleaded petrol or higher
Fuel tank capacity (litres)		50	50	50	50	45
Carbon dioxide, CO₂ (applicable legislation)						
Combined driving (g/km)	HB	112/125*	106/119*	105	108 [§] /110	79 [°] /82 [§] /91
	TS	112/126*	–	107	108 [§] /110	81 ^{§°} /92
Urban driving (g/km)	HB	137/151*	126/137*	122	129 [§] /131	79 [°] /82 [§] /89
	TS	138/151*	–	125	129 [§] /131	81 ^{§°} /90
Extra urban driving (g/km)	HB	97/110*	95/108*	95	96 [§] /98	78 [°] /81 [§] /90
	TS	97/111*	–	97	96 [§] /98	80 ^{§°} /91
Exhaust emissions (regulation EC/715/2007 as amended by EC 2015/45W)						
Euro class		EURO 6 W	EURO 6 W	EURO 6 W	EURO 6 W	EURO 6 W
Carbon monoxide, CO (mg/km)		196.8	108.2	63.6	412.1	182.3
Hydrocarbons, THC (mg/km)		32.0	25.7	–	–	36.6
Hydrocarbons, NMHC (mg/km)		27.4	21.5	–	–	33.2
Nitrogen oxides, NO _x (mg/km)		39.4	31.7	64.0	16.0	5.8
Hydrocarbons, THC & Nitrogen Oxides, NO _x (mg/km)		–	–	81.1	49.9	–
Particulates, PM (mg/km)		1.55	1.63	1.12	0.65	–
Sound level drive by (dB(A))		71	70	68	72	71/74 (TS)

The fuel consumption, CO₂ and noise values are measured in a controlled environment on a basic production vehicle, in accordance with the requirements of European law published by the European Commission. For further information, or if you are interested in buying a basic production vehicle, please contact Toyota Motor Europe NV/SA. The fuel consumption and CO₂ values of your vehicle may vary from those measured. Driving behaviour as well as other factors (such as road conditions, traffic, vehicle condition, installed equipment, load, number of passengers, ...) play a role in determining a car's fuel consumption and CO₂ emissions.

ENGINE	1.2 l Turbo Petrol 6 M/T	1.2 l Turbo Petrol M/D S	1.4 l D-4D Diesel 6 M/T	1.6 l D-4D Diesel 6 M/T	1.8 l Petrol Hybrid e-CVT
Engine code	8NR-FTS	8NR-FTS	1ND-TV	1WW	2ZR-FXE
Number of cylinders	4, in line	4, in line	4, in line	4, in line	4, in line
Valve mechanism	16-valve DOHC, chain drive with VVT-iW (Intake) and VVT-i (Exhaust)	16-valve DOHC, chain drive with VVT-iW (Intake) and VVT-i (Exhaust)	8-valve SOHC	16-valve DOHC, chain drive with Hydraulic Valve Clearance Compensation	16-valve DOHC with VVT-i
Fuel system	Direct injection (D4)	Direct injection (D4)	Common-rail system	Common-rail system	Intake Port
Displacement (cc)	1197	1197	1364	1598	1798
Bore x stroke (mm x mm)	71.5 x 74.5	71.5 x 74.5	73.0 x 81.5	78 x 83.6	80.5 x 88.3
Compression ratio	10.0 : 1	10.0 : 1	16.5 : 1	16.5 : 1	13.0 : 1
Maximum power output (DIN hp)	116	116	90	112	99
Maximum power output (kW/rpm)	85/5200	85/5200	66/3800	82/4000	73/5200
Maximum torque (Nm/rpm)	185/1500-4000	185/1500-4000	205/1400-2800	270/1750-2250	142/4000
Total hybrid system combined output (DIN hp)					136
Total hybrid system combined output (kW)					100

Electric Front Motor		Hybrid vehicle battery	
Type	Permanent magnet AC synchronous motor	Type	Nickel-metal hydride
Maximum output (kW)	60	Nominal voltage (V)	201.6
Maximum torque (Nm)	207	Number of battery modules	28
Maximum voltage (V)	650	Battery capacity (3HR) Amp.hr.	6.5

PERFORMANCE		1.2 l Turbo Petrol 6 M/T	1.2 l Turbo Petrol M/D S	1.4 l D-4D Diesel 6 M/T	1.6 l D-4D Diesel 6 M/T	1.8 l Petrol Hybrid e-CVT
Maximum speed (km/h)	HB/TS	200/195	195	180/175	195/195	180/175
0-100 km/h (secs)	HB/TS	10.1/10.4	10.5	12.5/13.0	10.5/10.7	10.9/11.2
Drag coefficient	HB/TS	0.29/0.30	0.29	0.28/0.28	0.28/0.28	0.28/0.29

HB = Hatchback TS = Touring Sports
* Style. § Active. ° Live.

M/T = Manual transmission

M/D S = Multidrive S

e-CVT = electronically controlled Continuously Variable Transmission

Specifications

SUSPENSION		1.2 l Turbo Petrol 6 M/T	1.2 l Turbo Petrol M/D S	1.4 l D-4D Diesel 6 M/T	1.6 l D-4D Diesel 6 M/T	1.8 l Petrol Hybrid e-CVT
Front		MacPherson Strut	MacPherson Strut	MacPherson Strut	MacPherson Strut	MacPherson Strut
Rear		Double Wishbone	Double Wishbone	Torsion Beam	Double Wishbone	Double Wishbone

BRAKES		1.2 l Turbo Petrol 6 M/T	1.2 l Turbo Petrol M/D S	1.4 l D-4D Diesel 6 M/T	1.6 l D-4D Diesel 6 M/T	1.8 l Petrol Hybrid Hybrid e-CVT
Front		Disc	Disc	Disc	Disc	Ventilated Disc
Rear		Disc	Disc	Disc	Disc	Disc

LOAD CAPACITY		1.2 l Turbo Petrol 6 M/T	1.2 l Turbo Petrol M/D S	1.4 l D-4D Diesel 6 M/T	1.6 l D-4D Diesel 6 M/T	1.8 l Petrol Hybrid Hybrid e-CVT
Luggage capacity (up to tonneau cover) (litres)	HB	360	360	360	360	360
	TS	672	–	672	672	672
Luggage capacity, up to roof, rear seat up (litres)	HB	428	428	428	428	428
	TS	530	–	530	530	530
Luggage capacity, up to roof, rear seat down (litres)	HB	1192	1192	1192	1192	1192
	TS	1658	–	1658	1658	1658
5 seats up: belt line (litres)		360/530	360/530	360/530	360/530	360/530
5 seats up: roof (litres)		435/672	435/672	435/672	435/672	435/672
2 seats up: belt line (litres)		790/1029	790/1029	790/1029	790/1029	790/1029
2 seats up: roof (litres)		1658/1199	1658/1199	1658/1199	1658/1199	1658/1199

DIMENSIONS AND WEIGHTS		1.2 l Turbo Petrol 6 M/T	1.2 l Turbo Petrol M/D S	1.4 l D-4D Diesel 6 M/T	1.6 l D-4D Diesel 6 M/T	1.8 l Petrol Hybrid Hybrid e-CVT
Exterior length (mm)	HB/TS	4330/4595				
Exterior width (mm)		1760				
Exterior height (mm)	HB/TS	1475/1485				
Front tread (mm)		1535/1525 (with 15" tyres)/1515 (with 17" tyres)				
Rear tread (mm)		1535 or 1525 (with 15" tyres)/1525 or 1515 (with 16" tyres)/1515 or 1505 (with 17" tyres)				



1535* mm

1760 mm



775 mm

2600 mm

955 mm

4330 mm

1475 mm



1525* or 1515* mm

1760 mm



1535* mm

1760 mm



1040 mm

2600 mm

955 mm

4595 mm

1485 mm



1525* or 1515* mm

1760 mm

HB = Hatchback

TS = Touring Sports

M/T = Manual transmission

e-CVT = electronically controlled Continuously Variable Transmission

* With 16" tyres.

Specifications

DIMENSIONS AND WEIGHTS

		1.2 l Turbo Petrol 6 M/T	1.2 l Turbo Petrol M/D S	1.4 l D-4D Diesel 6 M/T	1.6 l D-4D Diesel 6 M/T	1.8 l Petrol Hybrid e-CVT
Front overhang (mm)		955				
Rear overhang (mm)	HB/TS	775/1040				
Wheelbase (mm)		2600				
Turning circle – tyre (m)		5.2 / 5.4*				
Interior length (mm)		1830				
Interior width (mm)		1485				
Interior height (mm)		1180				
Luggage overall length, rear seat up (mm)	HB/TS	860/1115				
Luggage overall width (mm)	HB/TS	1350/1452				
Luggage overall height (mm)	HB/TS	875/890				
Luggage overall length, rear seat down (mm)	HB/TS	1395/1650				
VDA luggage capacity, up to tonneau cover, rear seat up (litres)	HB/TS	360/672				
Gross vehicle weight (kg)	HB/TS	1820/1850	1845	1820/1850	1890/1890	1815/1840 / 1815/1865
Kerb weight (kg)		1190-1400	1205-1375	1200-1385	1295-1480	1310-1465

WHEELS

	Live	Hybrid Live	Active	Hybrid Active	Style	Hybrid Style	Lounge	Hybrid Lounge
15" steel wheels with wheel caps (8-spoke)	●	–	–	–	–	–	–	–
15" alloy wheels (5 double-spoke)	–	●	–/● [§]	–	–	–	–	–
16" alloy wheels (5 double-spoke)	–	–	–	●/○ [§]	–	–	–	–
17" machined-face alloy wheels (5 double-spoke)	–	–	○	○	●	●	–	–
17" alloy wheels (5 double-spoke)	–	–	–	–	–	–	●	●
Tyre repair kit	–	●	●/○ [§]	●	●	●	●	●
Temporary spare wheel	●	–	–/● [§]	–	–	–	–	–

● = Standard

○ = Optional

– = Not available

* Style and Lounge.

§ Touring Sports.

Equipment

EXTERIOR STYLING	Live	Hybrid Live	Active	Hybrid Active	Style	Hybrid Style	Lounge	Hybrid Lounge
Chrome insert on upper front grille	●	●	●	●	●	●	●	●
Piano Black surround on lower front grille	●	●	●	●	●	●	—	—
Chrome surround on lower front grille	—	—	—	—	—	—	●	●
Chrome insert on lower front grille	—	—	●	●	●	●	—	—
LED front and rear light guide	●	●	●	●	●	●	●	●
Front spoiler	●	●	●	●	●	●	●	●
Chrome exhaust pipe finisher*	—	—	● [§]	—	● [§]	—	●	—
Body-coloured door mirrors and door handles	●	●	●	●	●	●	●	●
Chrome window frame	—	—	●	●	●	●	●	●
Privacy glass on rear windows	—	—	○/● [°]	○/● [°]	●	●	●	●
Piano Black centre pillar design	●	●	●	●	●	●	●	●
Shark-fin antenna	●	●	●	●	●	●	●	●

EXTERIOR COMFORT	Live	Hybrid Live	Active	Hybrid Active	Style	Hybrid Style	Lounge	Hybrid Lounge
Follow-me-home headlights	●	●	●	●	●	●	●	●
Headlight cut-off reminder	●	●	●	●	●	●	●	●
Dusk and rain sensor	—	—	○	●/○ [°]	●	●	●	●
Power adjustable heated door mirrors	●	●	●	●	●	●	●	●
Automatically retractable door mirrors	—	—	○	●/○ [°]	●	●	●	●
Remote door lock	●	●	●	●	●	●	●	●
Driver-only Smart Entry & Start System	—	●	—	●	—	●	—	—
Smart Entry & Start System	—	—	—	—	—	—	●	●
Tailgate release with push button	●	●	●	●	●	●	●	●
Toyota Skyview®	—	—	○	○	○	○	●	○

* Hatchback.

§ Not available on 1.4i D-4D 6 M/T.

° Touring Sports.

Equipment

INTERIOR STYLING

	Live	Hybrid Live	Active	Hybrid Active	Style	Hybrid Style	Lounge	Hybrid Lounge
3-spoke urethane steering wheel	●	●	—	—	—	—	—	—
3-spoke leather steering wheel	—	—	●	●	●	●	●	●
Chrome insert on steering wheel	●	●	●	●	●	●	●	●
Light Grey stitching on steering wheel	—	—	●	●	●	●	●	●
Chrome rings on analogue speedometer	—	●	●	●	●	●	●	●
Piano Black centre console	●	●	●	●	●	●	●	●
Satin chrome insert on centre console	●	●	●	●	●	●	●	●
Leather gear shift knob	●	—	●	—	●	—	●	—
Chrome gear shift knob surround	●	—	●*	—	●*	—	●	—
Satin chrome gear shift surround on centre console	●	●	●	●	●	●	●	●
Grey stitching on handbrake	●	●	●	●	●	●	●	●
Satin chrome button on handbrake	●	●	●	●	●	●	●	●
Leather armrest on front console box	—	—	—	—	—	—	●	●
Electric Blue upper dashboard	—	—	—	—	●	●	—	—
Soft-touch texture on upper dashboard	—	—	●	●	—	—	—	—
Leather-style texture on upper dashboard	—	—	—	—	—	—	●	●
Soft-touch texture on lower dashboard	—	—	●	●	●	●	●	●
Grey stitching on lower dashboard	—	—	●	—/● [§]	—	●/— [§]	●	●
Blue stitching on lower dashboard	—	—	—	—	●	●	—	—
Golden Copper stitching on lower dashboard	—	—	—	—	—	—	●	●
Chrome side air vent surrounds	●	●	●	●	●	●	●	●
Soft-touch door trim	—	—	—	—	—	—	●	●
Golden Copper front door insert	—	—	—	—	—	—	●	●
Fabric front door insert	●	●	●	●	●	●	—	—
Soft-touch front door insert	—	—	—	—	—	—	●	●
Soft-touch front door armrests	—	—	—	—	—	—	●	●
Fabric front door armrest	●	●	●	●	●	●	—	—
Single blue stitching on front door armrest	—	—	—	—	●	●	—	—

INTERIOR STYLING

	Live	Hybrid Live	Active	Hybrid Active	Style	Hybrid Style	Lounge	Hybrid Lounge
Double grey stitching on front door armrest	–	–	–	–	–	–	●	●
Double Golden Copper stitching on front door armrest	–	–	–	–	–	–	●	●
Black inserts on front door assist grips	●	●	–	–	–	–	–	–
Piano Black insert on front door assist grips	–	–	●	●	●	●	●	●
Satin chrome interior door handles	●	●	●	●	●	●	●	●

INTERIOR COMFORT

	Live	Hybrid Live	Active	Hybrid Active	Style	Hybrid Style	Lounge	Hybrid Lounge
Push-button start	–	●	–	●	–	●	●	●
Analogue speedometer	●	●	●	●	●	●	●	●
Analogue tachometer	●	–	●	–	●	–	●	–
Manual tilt and telescopic steering wheel	●	●	●	●	●	●	●	●
Electric Power Steering (EPS)	●	●	●	●	●	●	●	●
Paddle shifts [°]	–	–	–**	–	–**	–	–	–
Manual day/night rear-view mirror	●	●	●	–/● [§]	–	–	–	–
Electrochromatic rear-view mirror	–	–	○	●/○ [§]	●	●	●	●
Rear-view camera display	–	–	●	●	●	●	●	●
Static guide lines on rear-view camera display	–	–	●	●	●	●	●	●
Automatic air conditioning	●	●	●	●	●	●	–	–
Dual-zone automatic air conditioning	–	–	–	–	–	–	●	●
Pollen air filter	●	●	●	●	●	●	●	●
(Fixed) armrest on front console box	●	●	–	–	–	–	–	–
Sliding armrest on front console box	–	–	●	●	●	●	●	●
Fabric rear armrest	○	○	●	●	●	●	–	–
Leather rear armrest	–	–	–	–	–	–	●	●
Front sports seats	–	–	–	–	●	●	●	●
Power adjustable lumbar support on driver seat	–	–	–	–	–	–	●	●

● = Standard ○ = Optional – = Not available

* Not available on 1.21 Turbo M/D S.

§ Touring Sports.

° Hatchback.

** Standard on 1.21 Turbo M/D S.

Equipment

INTERIOR COMFORT

	Live	Hybrid Live	Active	Hybrid Active	Style	Hybrid Style	Lounge	Hybrid Lounge
Heated driver & front passenger seats	—	—	—	—	—	—	●	●
60:40 split-folding (2nd row) rear seats	●	●	●	●	●	●	●	●
Front and rear power windows	●	●	●	●	●	●	●	●
Auto up & down function on driver window only	●	●	—	—	—	—	—	—
Auto up & down function on all power windows	—	—	●	●	●	●	●	●
Anti-jam protection on power windows	●	●	●	●	●	●	●	●
Power passenger window lock	●	●	●	●	●	●	●	●
UV-filter on driver & front passenger windows	●	●	●	●	●	●	●	●
UV-filter on rear windows	●	●	●/—*	●/—*	—	—	—	—
Aerofins on rear window [§]	—	●	—	—	—	—	—	—
Driver & front passenger personal lamps	●	●	●	●	●	●	●	●
Rear passenger room lamp	●	●	○	○	○	○	●	○
Rear passenger personal lamps	—	—	●	●	●	●	●	●
Illuminated entry system	●	●	●	●	●	●	●	●
Front and rear overhead assist grips	●	●	●	●	●	●	●	●
Lamp on driver and passenger sun visor	—	—	●	●	●	●	●	●
Mirror on driver and passenger sun visor	●	●	●	●	●	●	●	●
Front, rear passenger and boot 12V power outlet	●	●	●	●	●	●	●	●
Power door lock	●	●	●	●	●	●	●	●
Child safety door lock	●	●	●	●	●	●	●	●
Key reminder warning	—	—	—	—	—	—	●	●
(Black on Blue) multi-information display	●	—	—	—	—	—	—	—
4.2" coloured TFT multi-information display	—	●	●	●	●	●	●	●
ECO-driving Indicator [§]	—	—	— ⁰	—	— ⁰	—	—	—
Gear Shift Indicator (GSI)	●	—	●**	—	●**	—	●	—
Hybrid System Indicator	—	●	—	●	—	●	—	●
Adjustable Speed Limiter (ASL) switch on steering wheel	—	—	●	—	●	—	●	—

INTERIOR COMFORT	Live	Hybrid Live	Active	Hybrid Active	Style	Hybrid Style	Lounge	Hybrid Lounge
Audio, multimedia and telephone switches on steering wheel	●	●	●	●	●	●	●	●
Voice recognition switch on steering wheel	—	—	—	—	—	—	●	●

STORAGE	Live	Hybrid Live	Active	Hybrid Active	Style	Hybrid Style	Lounge	Hybrid Lounge
Front console box	●	●	●	●	●	●	●	●
Lid on front console box	●	●	●	●	●	●	●	●
Single compartment glovebox	●	●	●	●	●	●	●	●
Lockable glovebox	●	●	●	●	●	●	●	●
Glovebox lamp	●	●	●	●	●	●	●	●
Front and rear door pockets	●	●	●	●	●	●	●	●
Front bottle holders	●	●	●	●	●	●	●	●
Rear bottle holders	—	—	●	●	●	●	●	●
1.5 litre bottle holder	●	●	●	●	●	●	●	●
Front cup holders	●	●	●	●	●	●	●	●
Rear cup holders	—	●	●	●	●	●	●	●
Rear passenger coat hooks (2)	●	●	●	●	●	●	●	●
Sunglasses holder	●	●	●	●	●	●	●	●
Driver & passenger seatback pockets	—	—	—	—	●	●	●	●
Passenger-only seatback pocket	—	—	●	●	—	—	—	—
Retractable tonneau cover [§]	●	●	●	●	●	●	●	●
Hard tonneau cover*	●	●	●	●	●	●	●	●
Dual-level deckboard	—	—	○	●	●	●	●	●
Full-flat loading	●	●	●	—	—	—	—	—
Boot underfloor storage	—	—	○	●	●	●	●	●
Luggage partition net*	—	—	●	●	●	●	●	●

● = Standard

○ = Optional

— = Not available

* Touring Sports.

§ Hatchback.

° Standard on 1.2l Turbo M/D S.

** Not available on 1.2l Turbo M/D S.

Equipment

MULTIMEDIA

	Live	Hybrid Live	Active	Hybrid Active	Style	Hybrid Style	Lounge	Hybrid Lounge
7" multimedia display	–	–	●	●	●	●	●	●
Radio and CD player with WMA and MP3	●	●	–	–	–	–	–	–
Toyota Touch® 2 multimedia system	–	–	●	●	●	●	●	●
Toyota Touch® 2 with Go Plus navigation system	–	–	–	–	–	–	●	●
4 speakers	●	●	–	–	–	–	–	–
6 speakers	–	–	●	●	●	●	●	●
Aux-in and USB connector integrated with radio and CD player	●	●	–	–	–	–	–	–
Aux-in and USB connector	–	–	●	●	●	●	●	●
Bluetooth® hands-free system	●	●	●	●	●	●	●	●
Wi-Fi connectivity	–	–	–	–	–	–	●	●
Voice recognition	–	–	–	–	–	–	●	●

SAFETY

	Live	Hybrid Live	Active	Hybrid Active	Style	Hybrid Style	Lounge	Hybrid Lounge
5-Star Euro NCAP safety rating	●	●	●	●	●	●	●	●
Pre-Collision System	–	–	○	○	○*	○	●	●
Anti-lock Braking System (ABS) with Electronic Brake force Distribution (EBD)	●	●	●	●	●	●	●	●
Brake Assist (BA)	●	●	●	●	●	●	●	●
Emergency Brake-light Signal (EBS)	●	●	●	●	●	●	●	●
High-mounted stop lamp (LED type)	●	●	●	●	●	●	●	●
Rear combination lamps (bulb type)	●	●	●	●	●	●	●	●
Multi-reflector halogen headlamps	●	●	●	●	–	–	–	–
LED headlamps	–	–	○	○	●	●	●	●
Automatic High Beam	–	–	○	○	○*	○	●	●
Automatic headlamp levelling	–	–	○	○	●	●	●	●
Front fog lamps	–	–	●	●	●	●	●	●
Daytime running lights (LED type)	●	●	●	●	●	●	●	●

SAFETY	Live	Hybrid Live	Active	Hybrid Active	Style	Hybrid Style	Lounge	Hybrid Lounge
Turning signal integrated in door mirrors	●	●	●	●	●	●	●	●
Adjustable Speed Limiter (ASL)	—	—	●	—	●	—	●	—
Cruise Control	●	●	●	●	●	●	●	●
Road Sign Assist	—	—	○	○	○*	○	●	●
Vehicle Stability Control (VSC)	●	●	●	●	●	●	●	●
Lane Departure Alert	—	—	○	○	○*	○	●	●
Traction Control (TRC)	●	●	●	●	●	●	●	●
Hill-start Assist Control (HAC)	●	●	●	●	●	●	●	●
Tyre Pressure Warning System (TPWS)	●	●	●	●	●	●	●	●
Front and rear parking sensors	—	—	—	—	—	—	●	●
Rear-view camera	—	—	●	●	●	●	●	●
Simple Intelligent Parking Assist (Simple IPA)	—	—	—	—	—	—	●	●
Immobiliser	●	●	●	●	●	●	●	●
Front and rear seat belt reminder	●	●	●	●	●	●	●	●
Pre-tensioners and force limiters	●	●	●	●	●	●	●	●
Supplemental Restraint System (SRS) airbags – 7 airbags	●	●	●	●	●	●	●	●
Front passenger airbag on/off-switch	●	●	●	●	●	●	●	●
ISOFIX seat fixing	●	●	●	●	●	●	●	●
Driver & front passenger Whiplash Injury Lessening (WIL) seats	●	●	●	●	●	●	●	●
Rear headrests (3)	●	●	●	●	●	●	●	●
PERFORMANCE, TRANSPORT & PROTECTION	Live	Hybrid Live	Active	Hybrid Active	Style	Hybrid Style	Lounge	Hybrid Lounge
Stop & Start System	—	—	● [§]	—	● [§]	—	●	—
Silver roof rails [°]	—	—	●	●	●	●	●	●

● = Standard ○ = Optional — = Not available

* Not available on 1.6l D-4D 6 M/T.

[§] Standard on 1.2l Turbo M/D S.

[°] Touring Sports.

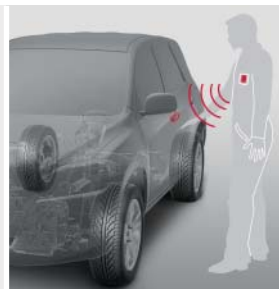
Glossary

Discover more about the Auris technology.



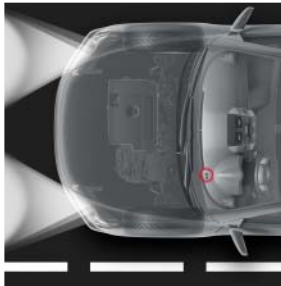
Follow-me-home headlights

Activated by the driver for added safety and practicality at night, the headlights remain lit for 30 seconds after parking your car to illuminate your path to the front door.



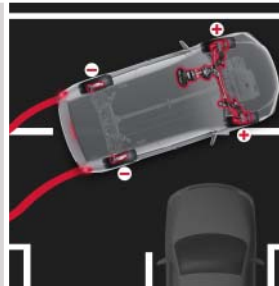
Smart Entry & Start System (driver, passenger and boot)

Instead of a conventional key, the Smart Entry & Start System features a transmitter that allows you to unlock the doors by pulling the handle and lock them again by pressing a button. To start or stop the engine, simply press the Start/Stop button. All you need to do is carry the Smart Entry key in your pocket or handbag.



Dusk sensor

The dusk sensor monitors light levels and automatically switches on the headlights when the light is low.



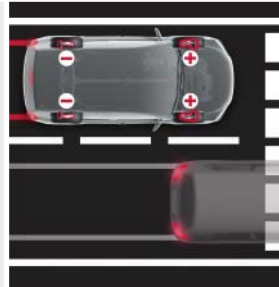
Anti-lock Braking System (ABS) with Electronic Brake force Distribution (EBD)

ABS prevents the wheels from locking while braking. EBD complements this by optimising brake force distribution between each wheel to compensate for different loads. Together the two systems help you to maintain steering control when braking heavily.



Rain sensor

The automatic rain sensor instantly sets the appropriate wiper speed and intervals.



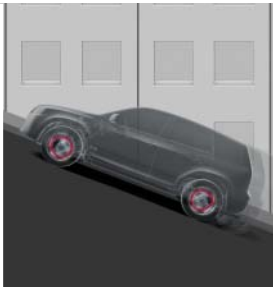
Brake Assist (BA)

If you attempt an emergency stop, BA will detect this and apply additional brake pressure. This enables ABS to work to its maximum potential.



Vehicle Stability Control (VSC)

VSC automatically activates each individual brake as needed and controls engine output to help maintain stability and prevent skidding when turning sharply or cornering on slippery road surfaces.



Hill-start Assist Control (HAC)

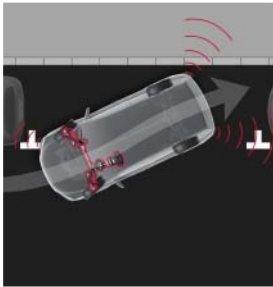
HAC helps to ensure a smooth start on steep inclines by applying the brakes for up to 2 seconds after the brake pedal is released. This prevents the vehicle from rolling back. It is activated by pushing the brake pedal harder after stopping as long as the transmission shift lever is in any forward gear position.



Toyota Safety Sense

Toyota Safety Sense adds advanced active safety systems for an even safer and more relaxed drive. Four active technologies – Pre-Collision System*, Lane Departure Alert, Automatic High Beam and Road Sign Assist are at the heart of Toyota Safety Sense.

* Technical name: Pre-Crash Safety System.



Simple Intelligent Parking Assist (Simple IPA)

Simple IPA automatically manoeuvres you into your chosen parking spot whether between two vehicles or behind one. Using ultrasonic sensors on the front side-bumper to identify a suitable parking space, once engaged, the system automatically performs the steering operations. You simply have to control the reversing speed and let the Simple IPA park your vehicle.



Traction Control (TRC)

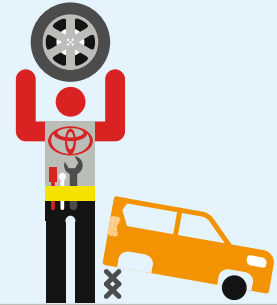
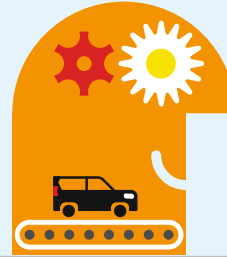
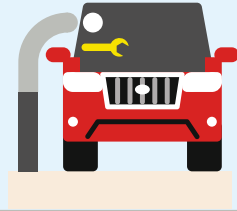
If you accelerate too hard and cause the drive wheels to lose grip and begin spinning, TRC will automatically reduce engine power and control brake force to help restore traction.



Supplemental Restraint System (SRS) airbags – 7 airbags

This model is fitted with seven airbags. They include driver's knee airbag, SRS airbags for both driver and passenger, side airbags for the front seats, and SRS curtain shield airbags covering both the front and rear seat passengers.

Complete peace of mind with Toyota.



Toyota Hybrid Service Programme

This is designed for you to enjoy your driving experience with peace of mind. We are pleased to provide Hybrid Battery Extra Care cover* on an annual/15,000 km basis (whichever comes sooner) up to the 10th year from vehicle registration date.

Toyota Quality Service

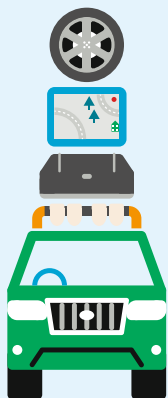
Your Toyota retailer will advise you on your car's service requirements. It will need a Health & Safety check at least once every 2 years/30,000 km (whichever comes sooner). An intermediate check is necessary every year or 15,000 km.

Toyota Low Maintenance Costs

All Toyota vehicles are designed and engineered to minimise your maintenance costs. This includes fewer parts that require servicing and, equally important, is that Toyota vehicle technology is made easily accessible so that maintenance labour time is less and pricing is competitive.

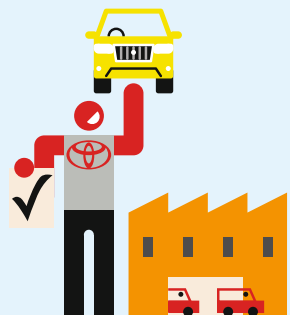
Toyota Genuine Parts

Providing the reassurance of Toyota quality, only genuine and approved components are used on your vehicle. If the vehicle is damaged, its design helps minimise the cost of repair because the most expensive-to-replace parts are deliberately located away from common damage zones. The result is ultimately less expense for parts and labour.



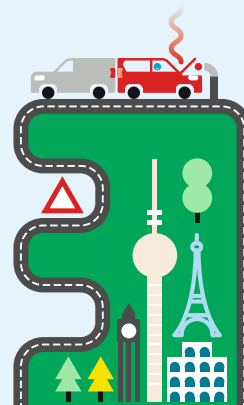
Toyota Accessories

Toyota genuine accessories are designed and manufactured with the same care, quality and attention to detail as Toyota vehicles. Adding a touch of style, comfort, convenience and practicality, they are tested for exceptional durability to enhance the enjoyment of your new car. All accessories are covered by a 3-year warranty when purchased together with the vehicle[§].



Toyota Comprehensive Warranty

Every new Toyota comes with a 3-year/100,000 km vehicle warranty, which covers any defect caused by a manufacturing fault. Transport to the nearest authorised Toyota repairer will also be covered. In addition, a 3-year/unlimited mileage paint warranty protects against defects and surface rust caused by a manufacturing fault. Every new Toyota is covered by a 12-year/unlimited mileage anti-perforation warranty[§] against perforation of body panels caused by a manufacturing fault in materials or workmanship.



Toyota Eurocare

Enjoy peace of mind driving with complimentary Toyota Eurocare roadside assistance in 40 European countries for 3 years[°]. If you experience a problem with your vehicle, Toyota Eurocare offers several possibilities to keep you on the road.

* Check with your retailer for specific Toyota Hybrid Service Programme details.

[§] Check with your retailer for specific warranty details.

[°] Belgium 5 years/Portugal and Denmark 1 year.



Toyota Added Security

Toyota's comprehensive security system withstands the insurance industry's rigorous 5-minute attack test. The alarm system and engine immobiliser are approved by all of Europe's major insurance companies.

Toyota's lifecycle approach to environmental issues.

1

DESIGN AND MANUFACTURE

Minimising environmental impact runs through every part of the Toyota business. In designing and developing a new vehicle, every component is carefully considered to ensure environmental efficiency is optimised throughout its life. The Life Cycle Analysis for the new Auris (engine type 1ND-TV) compared to the previous model, shows a reduction in emissions of all the main pollutants and considerable reductions of 26% in CO₂ (Carbon Dioxide), 48% in NO_x (Nitrogen Oxide), 13% in SO_x (Sulphur Oxide), 45% in PM (Particulate Matter) and 25% in NMHC (Non-Methane Hydrocarbons).

In addition, the combined solar arrays at TMUK's vehicle and engine plants produce almost 7,250 MWh of electricity each year, enough to power over 71,000 UK households.

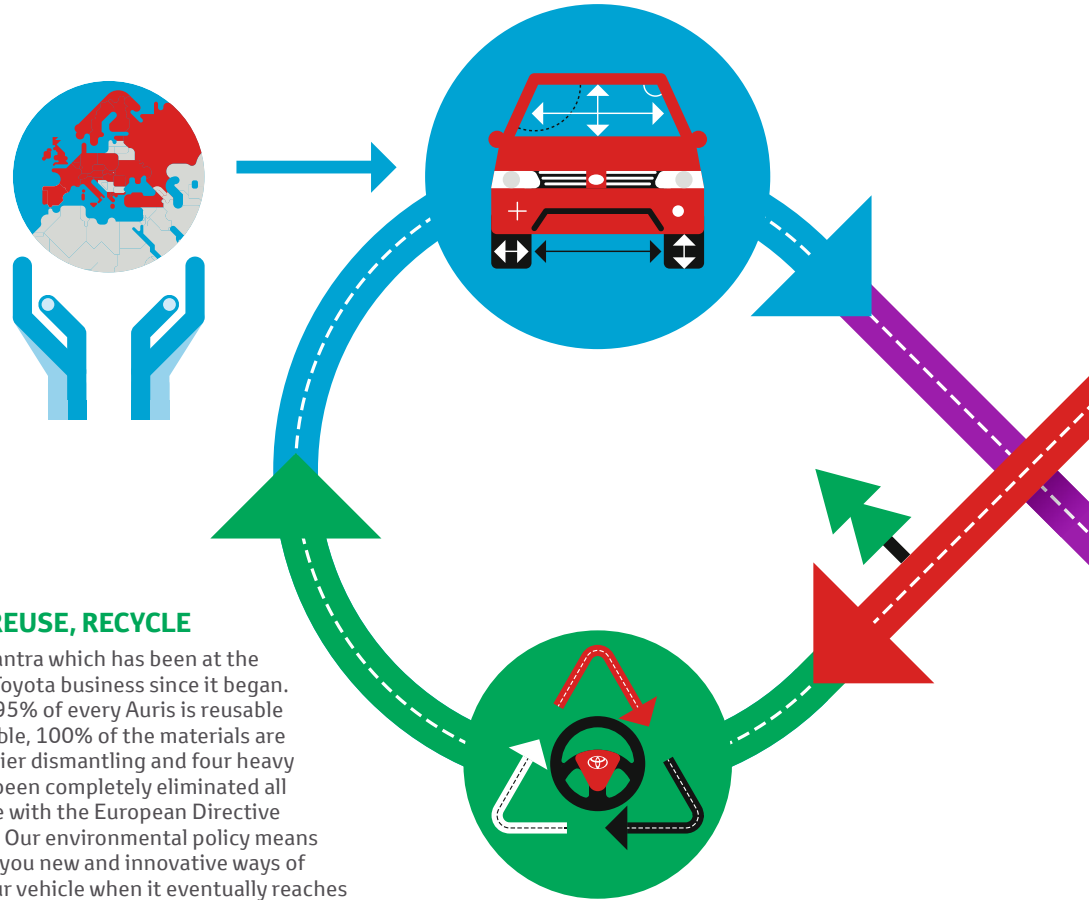


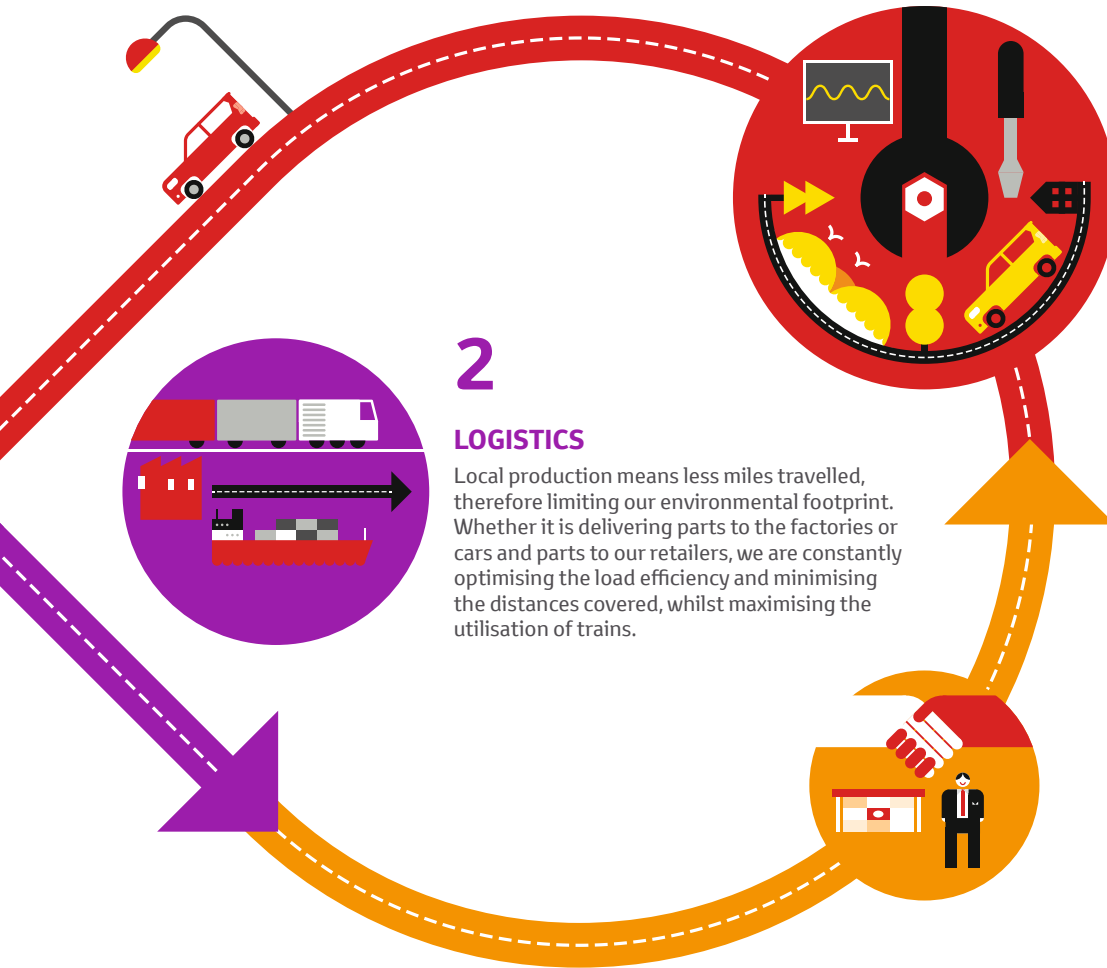
The Toyota Auris is built to the highest quality standards at TMUK in Burnaston, United Kingdom.

5

REDUCE, REUSE, RECYCLE

This is the mantra which has been at the heart of the Toyota business since it began. For example 95% of every Auris is reusable and recoverable, 100% of the materials are coded for easier dismantling and four heavy metals have been completely eliminated all in accordance with the European Directive 2000/53/EC. Our environmental policy means that we offer you new and innovative ways of returning your vehicle when it eventually reaches "the end of the road". For more information visit: www.toyota.europe.com or contact your local Toyota retailer.





2

LOGISTICS

Local production means less miles travelled, therefore limiting our environmental footprint. Whether it is delivering parts to the factories or cars and parts to our retailers, we are constantly optimising the load efficiency and minimising the distances covered, whilst maximising the utilisation of trains.

4

DRIVING AND SERVICING

Driving your Toyota with greater thought could help reduce your fuel bill and CO₂ emissions by up to 30%. Our sales teams can show you how to get the best out of your new car and maximise its fuel efficiency.

Once out of the showroom let our highly trained aftersales teams take care of your car to ensure its continued performance. The use of genuine and certain remanufactured genuine parts also helps to reduce further our impact on the environment.

3

VEHICLE RETAIL

Improvements in the environmental efficiency of Toyota's network of showrooms are an on-going commitment. Sustainability initiatives such as energy audits, rainwater recuperation, improved building insulation and an increased use of renewable energy sources all help to reduce energy and water consumption as well as waste.

AURIS

Enjoy a better drive.

If you want to experience a better drive,
go online or contact your local Toyota
dealer and discover new Auris.







Models shown: Auris and Auris Touring Sports – Hybrid Style.



Model shown: Auris – Hybrid Style.



Auris Touring Sports

Point your smartphone or tablet at the graphic and start a new experience.



Auris

Point your smartphone or tablet at the graphic and start a new experience.



TOYOTA

ALWAYS A
BETTER WAY

**TO EXPERIENCE THE NEW AURIS OR FOR
MORE INFORMATION, PLEASE CONTACT YOUR
LOCAL RETAILER OR VISIT OUR WEBSITE
TOYOTA-EUROPE.COM**

To the best of our knowledge, all information in this brochure is correct at time of going to print. Details of specifications and equipment provided in this brochure are subject to local conditions and requirements and may, therefore, vary from models available in your area. Please enquire with your local retailer for details on your local specifications and equipment. • Vehicle body colours may differ slightly from the printed photographs in this brochure. • The readability of QR Codes® present in this brochure may differ according to the scanner used. Toyota cannot be held responsible should your device not be able to read any QR Codes® or interactive content markers. • Toyota Motor Europe reserves the right to alter any details of specifications and equipment without prior notice. • © 2015 by Toyota Motor Europe NV/SA ('TME'). • No part of this publication may in any way be reproduced without the prior written approval of Toyota Motor Europe.