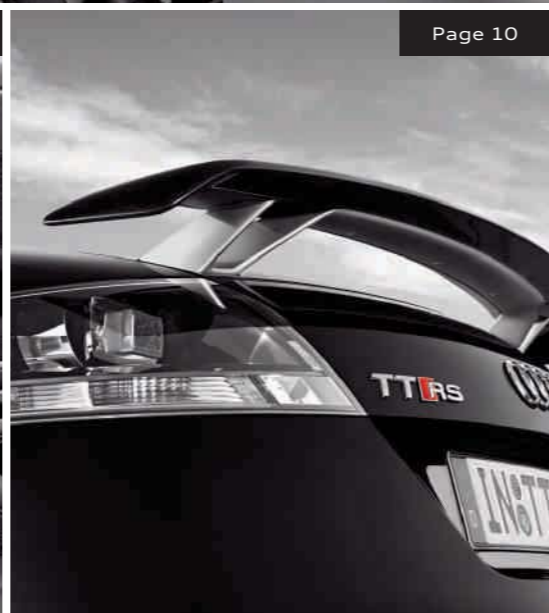




TT RS

 Audi TT RS Coupé/Roadster

Vorsprung durch Technik 



Page 30

Page 14

Page 10

Page 26

	Page
Fascination	
	4 The Audi TT RS experience
Technology	
	30 2.5 TFSI engine
	32 S tronic
	34 quattro®
	36 Chassis
	37 High-performance braking system
	38 Audi Space Frame (ASF)
Equipment	
	42 Paints
	44 Hood colours
	45 Seats/seat covers
	47 Inlays
	48 Wheels/tyres
	50 Lights and mirrors, exterior equipment, interior equipment
	52 Infotainment, assistance systems, technology
	54 Technical data
	56 Dimensions
	58 The fascination of Audi
	60 Index

The fuel consumption and CO₂ emission figures can be found on page 54. The equipment levels of the illustrated vehicles can be found on page 63.

The Audi TT RS.
The desire for performance.





Less rules.

A sports car. Developed with the goal of creating a pure driving machine. Authentic and emotional. Equipped with the genes of the original quattro. Built to set the standards. Extremely sporty. For direct contact with the road. The Audi TT RS.

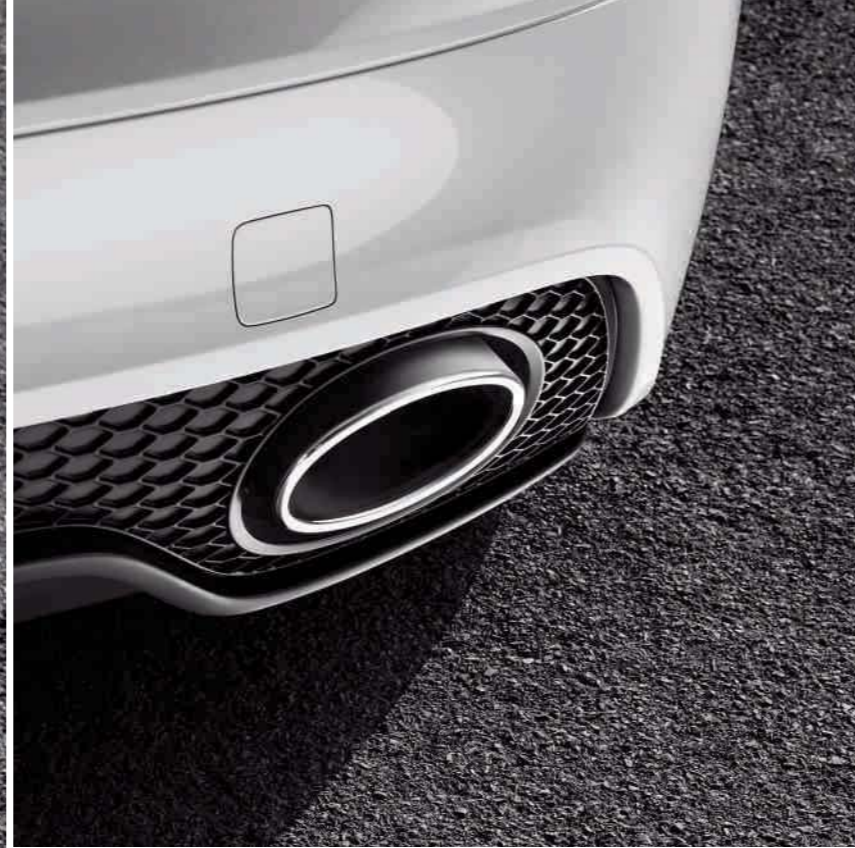
The fuel consumption and CO₂ emission figures can be found on page 54.



Less reservation.

Its design: fascinating and powerful. Its contours: timeless. A design icon. Extended beyond typical Audi RS model features. The radiator grille with high-gloss black diamond design mesh. Exterior mirrors in matt aluminium look. Large wheels in exclusive designs. The TT RS: experience it. As an observer. And as a driver.

The fuel consumption and CO₂ emission figures can be found on page 54.



Its design is exceptionally dynamic. Each model boasts specific details that drive this feeling home: bumpers with enlarged air intakes at the front and a striking diffuser insert at the rear. A dual-branch exhaust system with oval tailpipes. The fixed rear wing. Designed for function, distinctive in design.

The fuel consumption and CO₂ emission figures can be found on page 54.





Less distraction.

The cockpit: an interface between the driver and the vehicle. Its interior: puristically black. The sports steering wheel has good grip for precise control. Sports seats and optional bucket seats for superior lateral support. TT RS specific design elements and material contrasts make for suspense-filled dynamics. But in spite of all that, you'll only have eyes for the next bend.



The interior concentrates on the essential, with a focus on function. The seat covers, steering wheel, instrument cluster and door sill trims feature TT RS logos. The driver information system displays additional information on boost pressure, oil temperature and laptimer. Ergonomically arranged cockpit elements. Intuitively operable. All designed for one purpose: an unadulterated sporty driving experience.

Less compromises.

The TT RS sports suspension knows only one challenge: the road. The lowered suspension and special spring/damper setting deliver phenomenal handling. Every move of the steering wheel is carried out precisely. The permanent all wheel drive quattro® ensures a high level of grip. And excellent traction. The driving forces are transferred almost completely to the asphalt. An 18-inch high performance braking system ensures direct deceleration. The ESP can be deactivated in two stages. Standard 18 or optional 19 and 20-inch aluminium wheels with an exclusive design and excellent grip. Drive with unimagined intensity: More directly. More dynamically. Typically TT RS.

The fuel consumption and CO₂ emission figures can be found on page 54.



Less boredom.

The TFSI® engine. The heart of the TT RS. More than just complex technology. Sets emotions free. Creates intense moments. That is obvious right from the start: The robust sound of the five-cylinder engine signals overwhelming power. To transfer this power, two types of transmission are available: 6-speed manual transmission or 7-speed S tronic. Always in combination with quattro®. For a driving sensation just like in motor racing. Pure. Full of emotion. Extremely dynamic.

The fuel consumption and CO₂ emission figures can be found on page 54.



The five-cylinder design has its roots deep in the Audi genes. With innumerable successes in rally and road racing. Legendary models were driven by turbocharged five-cylinder engines: from the original quattro to the Sport quattro S1 right up to the Audi IMSA/GTO vehicles. A long tradition that makes the TT RS the legitimate successor to the original quattro. But the dynamics that it has inherited can be moved up yet another gear: by pressing the Sport button. The engine responds more quickly to every move of the accelerator and the noise of the exhaust system sounds more powerful. The result: a driving experience like no other.

The fuel consumption and CO₂emission figures can be found on page 54.





Less weight.

Reach a top performance. Created by outstanding efficiency in every detail. The Audi Space Frame (ASF) technology combines aluminium and steel. This lowers the vehicle weight and increases rigidity. For extremely direct handling and exceptional driving enjoyment. Less weight, but more power: thanks to the permanent all-wheel drive quattro®, the enormous potential of the five-cylinder TFSI engine is transferred superbly to the road. The modest consumption of the TT RS is also convincing: 8.5 litres per 100 km*. A performance that will impress you time after time.

*Figure for the TT RS Coupé with S tronic.
The fuel consumption and CO₂ emission figures can be found on page 54.

Built for unique driving enjoyment. Born from the genes of the original quattro. A design icon and an extreme sportsman in one package. Discover a new limit: the Audi TT RS.

The fuel consumption and CO₂ emission figures can be found on page 54.



More
TTT ■

TTRS



5-cylinder inline motor with 2,480 cc displacement

maximum output 250 kW at 5,400–6,500 rpm

maximum torque 450 Nm at 1,600–5,300 rpm

specific output 100.8 kW/l displacement

exhaust gas turbocharging up to 1.2 bar

FSI® direct fuel injection up to 120 bar

Many hours of development.
Thousands of miles of testing.
And for what reason?

In just a few seconds you will understand why.

The 2.5 litre TFSI engine in the TT RS is a genuine high-performance engine. It generates 250 kW of power from 2,480 cc of displacement and provides a full 450 Nm of torque in the 1,600–5,300 rpm range. On one hand, this ensures that the vehicle can confidently draw power right from the depths of the vehicle, and on the other, gives it an enormous sprinting ability right up to a top speed of 6,800 rpm.

The unusual five-cylinder base concept gives it an unmistakable sound due to the firing order. It also offers the advantages of compact measurements and a low weight, which accommodates

the vehicle layout well and positively influences the axle load distribution. Obviously all components of this engine are designed and developed to meet the high standards required for use in a TT RS.

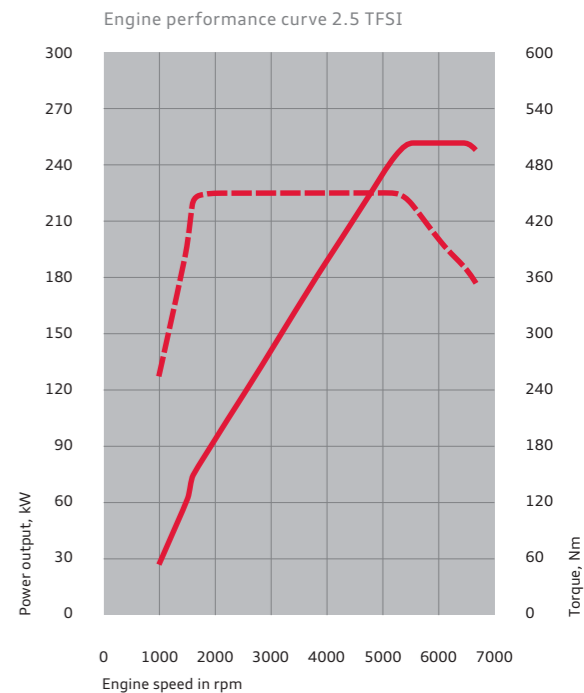
Both the Audi core technologies of turbocharging and direct fuel injection yet again ensure a high power output, impressive torque and efficiency in this engine. Pneumatically controlled valves set the air flowing into the cylinder in a rotating motion. The fuel is injected in exact doses at up to 120 bar of pressure into this so-called “tumble”. This generates an intensive turbulence, which

leads to the cylinder walls being cooled internally. It is therefore possible to increase the compression ratio of the engine and in this way improve its efficiency. The generously proportioned exhaust gas turbocharger has its own oil supply and a cooling circuit with its own water pump. It compresses the air to a relative boost pressure of up to 1.2 bar. A charge air cooler ensures that it delivers a high degree of efficiency.

So much for the theory. In practice you can accelerate from 0–100 km/h in just 4.3 seconds* in the TT RS – right up to a top speed of 250 km/h (electronically regulated).

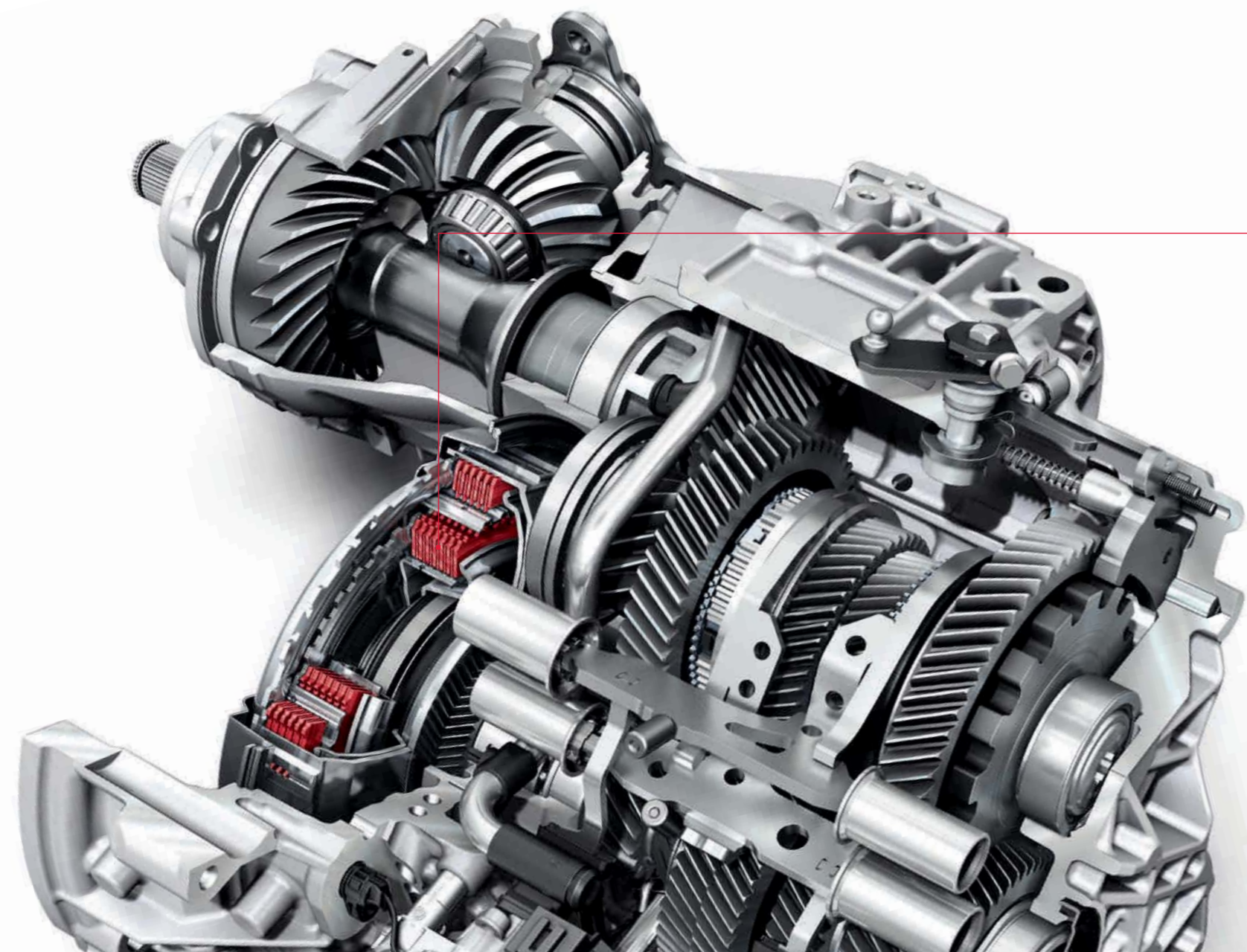
Power output

Torque



The fuel consumption and CO₂ emission figures can be found on page 54.

* Figure for TT RS Coupé with S tronic.



What is the benefit of two clutches?

A double saving: time and energy.

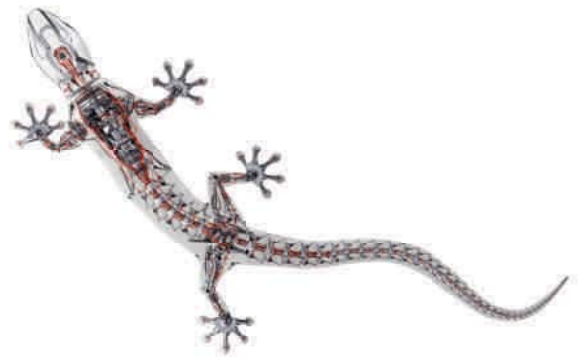
The optional 7-speed dual clutch transmission enables quick shifts with practically no break in propulsive power and as such, is particularly efficient.

The 7-speed S tronic is formed of two multi-disc clutches and two gearboxes. Both parts of the transmission are permanently active, although there is only ever one actually connected to the engine. For example, when the driver accelerates

in third gear, the second part of the transmission is already set in fourth gear. The gear change works by changing the clutch – one opens and the other closes. The gear change takes place in a few hundredths of a second. So quickly and fluently that it is hardly noticeable.

Regardless of whether the driver chooses the fully automatic mode with the D (Drive) and S (Sport) programs, or chooses to change

gear manually with the shift paddles or using the selector lever, the gear change feels precise and extremely sporty. Even with all of this dynamic performance, the S tronic still remains very efficient. Because thanks to its high degree of efficiency, both fuel consumption and harmful emissions are reduced. Furthermore, the 7th gear is designed as an overdrive with a longer transmission.



With quattro®, we have invented one of the best all-wheel drive systems in the world.

Try it for yourself: in the Audi TT RS.

Those who know Audi know quattro®. And anybody who has driven with the permanent all-wheel drive system from Audi will never want to drive any other way.

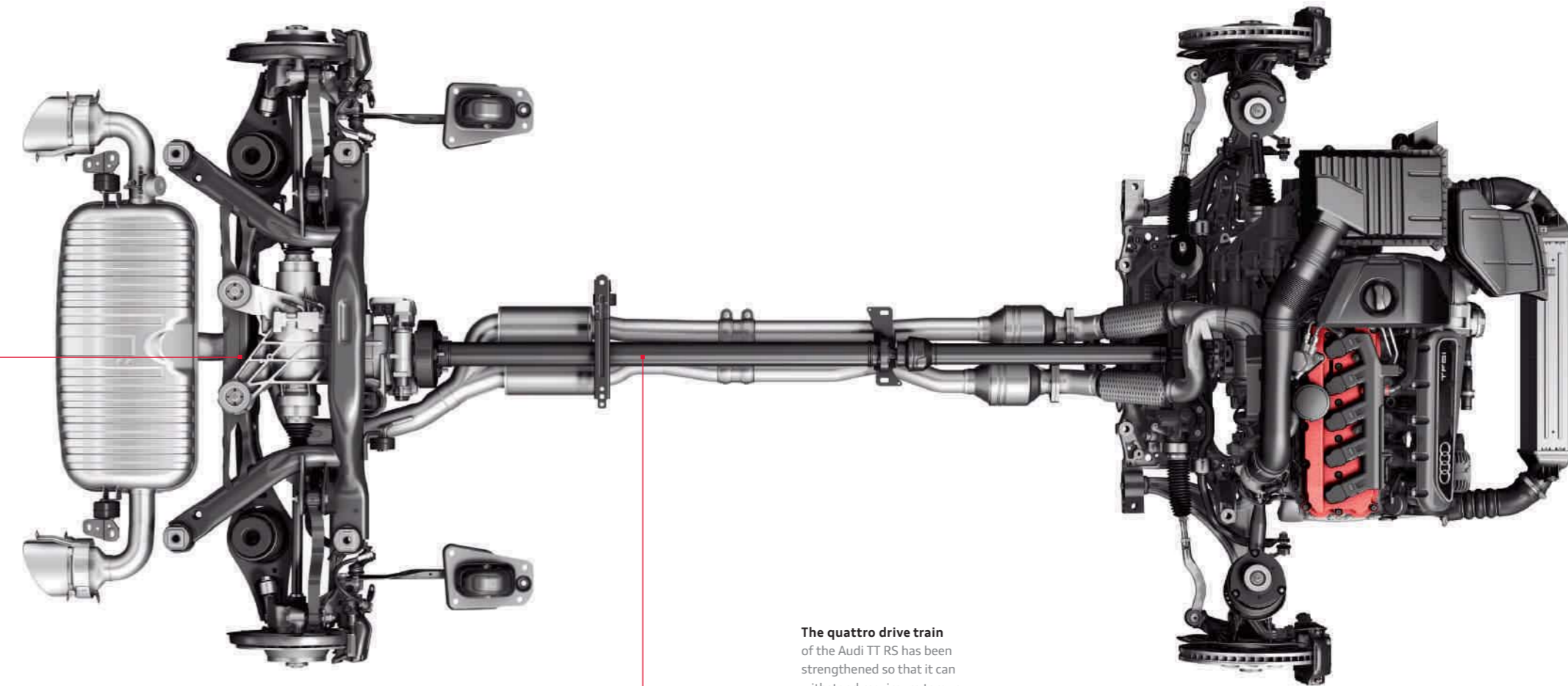
Why? Because this drive system transfers the engine's power to the road in such an impressive way. Therefore the TT RS is equipped with quattro as standard.

If the wheels on one vehicle axle threaten to spin away then the power is transferred to the other axle. The latest generation electronically

controlled and hydraulically operated Haldex clutch is at work in the TT RS, which allows for a favourable distribution of the drive torque between the front and rear axle. The rapid response and very fast reaction times of this generation of quattro are particularly convincing.

The Audi TT RS boasts all of the superior qualities that have been characteristic of Audi for a long time: outstanding traction, virtually non-slip acceleration, increased driving dynamics, improved straight-line driving and improved driving safety.

The fuel consumption and CO₂ emission figures can be found on page 54.



The quattro drive train of the Audi TT RS has been strengthened so that it can withstand maximum torque of up to 450 Nm.

A confident appearance can be learned.

From suspension, for example.



For the suspension, the TT RS makes use of the excellent qualities possessed by the basic TT construction. The front wheel mount is a McPherson construction with three triangular arms on the underside. The swivel bearing, axle support and the suspension arm are all made from aluminium. The axle support is bolted to the chassis at six points to increase its rigidity. The rack and pinion steering works with variable steering assistance. Its modified characteristic curve corresponds to the dynamic character of the TT RS. Thanks to the elaborate construction

of the four-link rear axle, longitudinal and lateral forces can be processed separately and independently of each other. The trailing arms absorb the driving and braking forces. The relatively soft design of their bearing improves ride comfort, whereas the three suspension arms of each wheel are firmly secured to the axle support thereby improving driving dynamics. The separately positioned coil springs and the newly developed dampers see to the vertical force. The characteristic curves of the spring-damper combination as well as the adapted elasto-kinematics were

specially developed and extensively tested for the TT RS. Part of this testing consisted of a great deal of speedy laps on the Nordschleife of the Nürburgring. Electronic control of the shock absorbers is available on request: Audi magnetic ride. The adaptive damping system adjusts the stiffness of the shock absorbers to the road conditions in just a few hundredths of a second. In comfort mode, Audi magnetic ride is a comfortable sports suspension, in sport mode, the suspension provides direct feedback from the road.

The fuel consumption and CO₂ emission figures can be found on page 54.

Nothing can stop a high performance sportsman.

Except for a high-performance braking system.

18-inch high-performance braking system

The brake discs on the front axle have a diameter of 370 mm. The brake callipers are painted in high-gloss black.



The standard 18-inch high-performance braking system with its four-piston fixed saddle grips powerfully to the front axle. The front brake discs consist of a cast friction ring that is connected to the aluminium brake disc chamber with steel pins. This so-called floating bearing ensures that the friction ring remains largely tension free, which improves stability under extreme temperatures. The axial perforation of the discs and a

cooling channel for interior ventilation increase the performance of the brake discs even further. The use of aluminium not only reduces the weight of the brake discs but also improves the weight balance of the unsprung masses.

Cast aluminium components: Structural castings provide a high degree of design freedom and function integration. Variable wall thicknesses, flexible shaping and ribbing optimised for the flow of forces ensure that material is only used where it is actually needed. The development of high-strength structural castings establishes the basis for superb integration of extruded aluminium sections into the ASF structure.

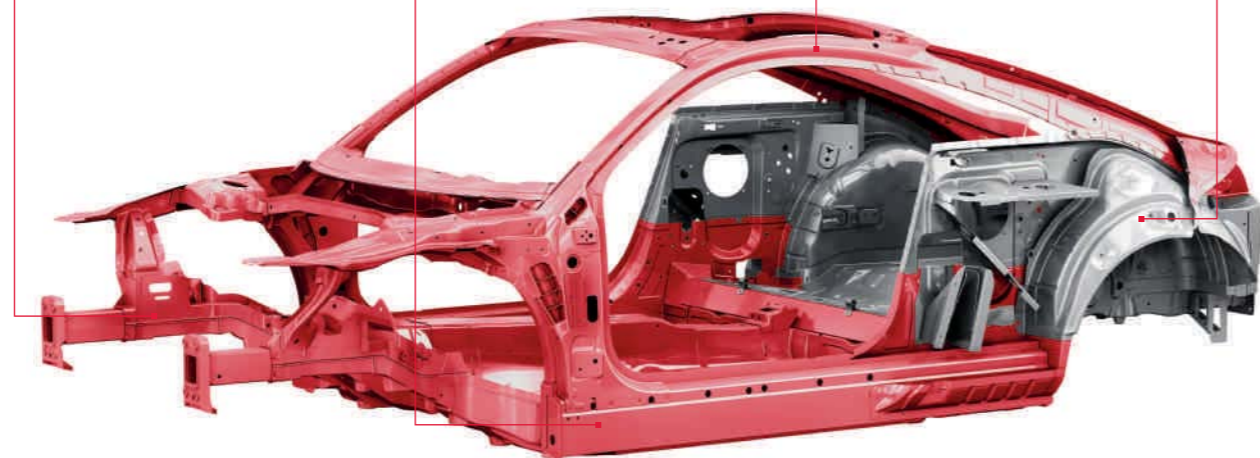
Extruded aluminium sections: Thanks to variable wall thicknesses, profiled cross sections and the use of high-strength alloys, extruded profiles enable a very rigid vehicle body to be achieved. They also facilitate excellent energy absorption in the deformation zones. They reveal their full potential in the optimum integration of the castings to form part of the structure, thereby enabling the high performance of the ASF structure.

Aluminium panels: They supplement the structure formed by the castings and the profiles and increase overall body rigidity with transition points optimised for force flow, simultaneously combined with superb individual part performance. Thanks to new, thermally-hardened alloys, they unite optimum function with low weight. The correct choice of joining technology also plays a key role here. Only if this is right will the individual parts be integrated into the ASF to form part of the structure and thereby perform a load-bearing function.

Steel: Steel is used at the rear for a balanced axle load distribution. Aluminium and steel shells have been combined for the first time to keep vehicle weight down while achieving the driving feel typical of a sports car.

Why an aluminium body?

Because lightweight construction offers heavyweight advantages.



The Audi TT RS boasts an excellent power-to-weight ratio, as you would expect from a genuine sports car. On one hand, it is helped by the powerful 2.5 litre TFSI engine, and on the other hand by its very low unladen weight, afforded it by its body constructed using Audi Space Frame (ASF) technology.

The aluminium in the Audi Space Frame (ASF) is light, can be customised to a high degree with

aluminium parts and steel extruded profiles and the parts manufactured from it are distinguished by their high level of rigidity. Processing them is a challenge, however, as they have to meet the highest standards.

The development of specialist welding methods is just one of the challenges that we have successfully mastered. Consequently, we are constantly developing our lightweight construc-

tion technology. In the Audi TT RS, an innovative combination of aluminium and steel ensures a balanced weight distribution. The body is almost 70% aluminium to minimise vehicle weight and thus fuel consumption. For you, the ASF construction means, in specific terms, increased safety, reduced fuel consumption, sporty handling and reliable quality through the use of selected materials.

The fuel consumption and CO₂ emission figures can be found on page 54.



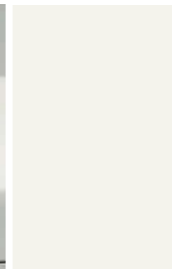
It is the equipment that transforms an Audi into your Audi.



Suzuka Grey, metallic



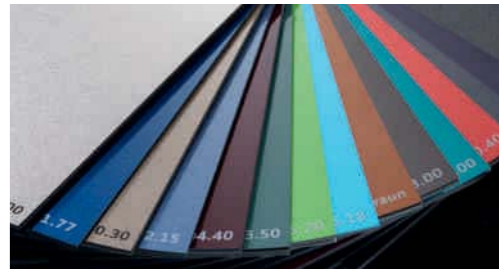
Ibis White



Daytona Grey, pearl effect



Phantom Black, pearl effect



Audi exclusive individual paints
From quattro GmbH



Monza Silver, metallic



Misano Red, pearl effect



Panther Black, crystal effect



Suzuka Grey, metallic

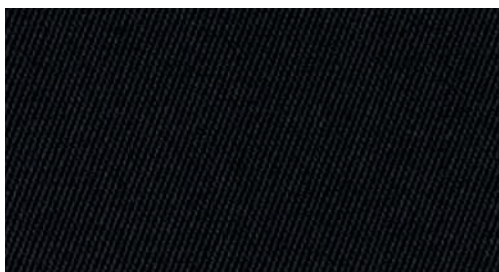


Sepang Blue, pearl effect

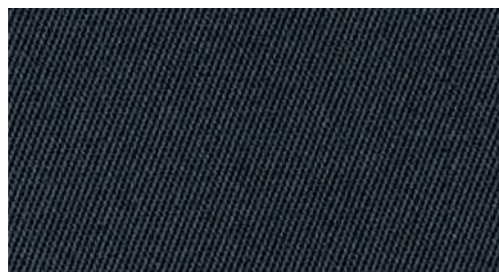




Suzuka Grey, metallic with hood in Black



Hood, Black



Hood, Dark Grey



Sports seats, front
with shaped side bolsters for better lateral support when cornering, manual fore/aft, head restraint and backrest angle adjustment; adjustable seat height for both driver and front-passenger seats; TT RS embossed logo in the front seat backrests



Alcantara/leather black
with contrasting seams in silver



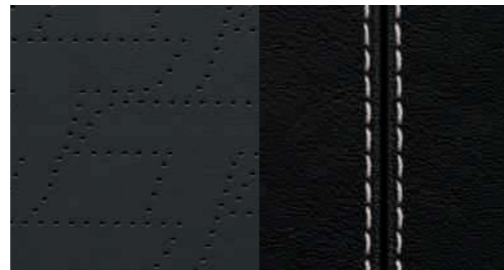
Audi exclusive Leather upholstery and trim.
From quattro GmbH



Silk Nappa leather black
with contrasting seams in silver



Silk Nappa leather silver
with contrasting seams in black



Fine Nappa leather black with contrasting seams in silver



Audi exclusive leather upholstery and trim. From quattro GmbH



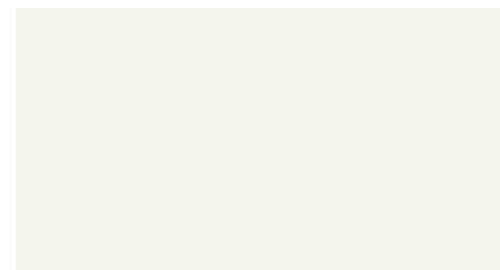
Matt brushed aluminium

Inlays in the centre console, on the glove compartment and on the door handle surrounds

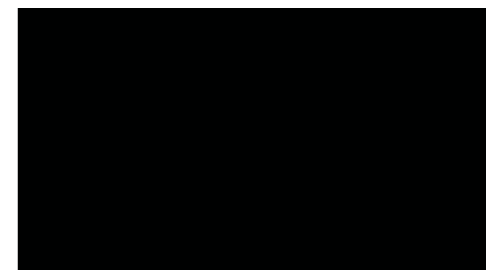
TT RS bucket seats, front
more clearly defined seat for increased lateral support, with integral head rests, manual fore/aft and backrest angle adjustment, seat height adjustment for driver and front-passenger seats, TT RS embossed logo in the front seat backrests, without side air bag or ISOFIX child seat mounting



Matt brushed aluminium



Ibis white



Phantom black



Forged aluminium wheels, 7-double-spoke design, polished, 2-tone



Cast aluminium wheels, 5-double-spoke design, size 9 J x 18 with 245/40 R 18 tyres



Cast aluminium wheels, 5-segment spoke design, size 9 J x 19 with 255/35 R 19 tyres



Cast aluminium winter wheels, 5-double-spoke design, size 9 J x 18 with 245/40 R 18 tyres, cannot be fitted with snow chains, permissible top speed 240 km/h



Cast aluminium wheels, 5-arm rotor design, size 9 J x 19 with 255/35 R 19 tyres



Forged aluminium wheels, 7-double-spoke design, polished, 2-tone, size 9 J x 20 with 255/30 R 20 tyres



Cast aluminium winter wheels, 5-arm rotor design, size 9 J x 19 with 255/35 R 19 winter tyres, cannot be fitted with snow chains, permissible top speed 240 km/h



Cast aluminium wheels, 5-arm rotor design in titanium look, high-gloss turned finish, size 9 J x 19 with 255/35 R 19 tyres

Wheel-bolts, anti-theft alarm
can only be loosened using adapter provided

Tyre repair kit
12 V compressor and tyre sealant, located under the loading floor cover in the luggage compartment; top speed 80 km/h

Tyre pressure control display
provides a visual and acoustic warning if the pressure drops in one or more tyres, displayed in driver information system

Vehicle tool kit
in the luggage compartment under the loading floor

Jack
in the luggage compartment under the loading floor

Light
xenon plus including headlight cleaning system headlights utilising durable gas discharge technology for dipped and main beam ensure intensive illumination of the road and provide good uniformity and range both close up and in the distance. The automatic-dynamic headlight range control helps to prevent dazzling on-coming traffic

Daytime running lights
energy-saving daytime running light band in LED technology integrated into the headlights

adaptive light
dynamic cornering light achieved with swivelling headlights for better illumination of approaching bends

Main beam assist
working within system limits, it automatically detects the headlights of oncoming traffic, the rear lights of other road users and built-up areas. Depending on the traffic situation, the main beam is automatically switched on or off. The system thereby improves the driver's visibility and safety and ensures a more relaxed drive thanks to the extra comfort and convenience. (Can only be ordered in conjunction with automatically-dimming interior mirror with light/rain sensor)

Interior lighting
with delayed switch-off and contact switches on all doors; driver, front passenger and luggage compartment lighting, with front reading lights

Lighting package
with LED technology, interior lights, ambient lighting, front footwell lights, inside door handles, illuminated make-up mirrors (TT RS Coupé), entrance lighting and active door reflectors

Door reflectors
passive, when the door is open safeguard against following traffic

Rear lights
in red clear-glass look with white reversing light; 3-dimensional design; LED 3rd brake light and rear licence plate lights*

Rear fog light
incorporated in the centre of the rear bumper

Lights styling package
chrome-look headlight surrounds, black insert for rear lights

Mirrors
Exterior mirrors with integral LED indicators electrically adjustable; convex, flat or aspherical mirror glass

Exterior mirrors
choice of:

heated
including heated windscreen washer jets

heated and electrically folding

heated, electrically folding and automatically dimming
(can only be ordered in conjunction with automatically dimming interior mirror with light/rain sensor)

Exterior mirror housings
choice of:

in matt aluminium look
painted in body colour

in Audi exclusive Carbon
From quattro GmbH

Interior mirror dimming

Interior mirror, automatically dimming with light/rain sensor
for controlling the automatic headlights and windscreen wipers, includes coming home/leaving home function: delayed switching off/automatic switching on of main headlights, rear and licence plate lights when vehicle is turned off/opened; optionally available with digital compass that provides a digitised display of the current direction; the 8 points of the compass (N, NE, E, SE, S, SW, W, NW) are shown in English

Make-up mirrors
in driver and front-passenger sun visors (illuminated in the TT RS Coupé)

Roof systems
acoustic hood fully automatic, made from insulated 3-layer fabric, with improved interior noise and thermal insulation; including integral, fully automatic cover flaps, hood headlining in black; hood opens in 12 seconds. (TT RS Roadster)

Wind deflector
with electric extend and retract function (TT RS Roadster)

Closing systems
Central locking with radio-operated remote control integrated in the vehicle key, locks doors, tailgate and fuel filler cap; includes convenient closing/opening of windows and separate tailgate unlocking function via the radio-operated remote control; additional activation from inside on the driver's door

Radio-operated remote control
for the central locking, incorporated into the vehicle key, opens and locks doors, windows and luggage compartment at the touch of a button – with variable rolling code

Radio-operated remote control
for the central locking, incorporated into the vehicle key, opens and locks doors, windows and luggage compartment at the touch of a button – with variable rolling code

Immobiliser electronic,
incorporated into engine control unit, automatically activated via the vehicle key

Fitting for Tracking Assistant
fitting for connecting a Tracking Assistant that enables a stolen vehicle to be located

Garage door opener (HomeLink)
programmable radio-operated remote control, control buttons incorporated into the interior light module; can be used to open and/or close garage doors and exterior gates; allows control of security and lighting systems. Please contact your Audi Partner for further information

Anti-theft alarm
including interior monitoring and anti-tow away function using angle of inclination sensor, can be deactivated; horn operates independently of vehicle electrical system; monitors engine and luggage compartments, doors and interior

Glazing
Heat-insulating glass green tinted, windscreen made of laminated glass

Dark-tinted windows (privacy glazing)
rear side windows and rear window are tinted (TT RS Coupé)

Windscreen
with grey coloured strip along the top edge

Rear window
heated with timer switch. Integral window antenna (for TT RS Coupé)

Windscreen cleaning system
2 speeds, 4-speed adjustable intermittent wipe, flick-wipe function, automatic wash/wipe, automatic wiping after the last wash/wipe process

Further exterior equipment
Matt aluminium styling package front spoiler, underside of the rear diffuser insert and intake on the TT RS rear wing in matt aluminium look

Audi exclusive black styling package
radiator grille frame, radiator grille and licence plate holders in high-gloss black. From quattro GmbH

Bumpers
in sporty dynamic design; with large air intakes at the front, diffuser insert at the rear; bumpers and sill trim painted in the body colour

Audi Singleframe
radiator grille in diamond design high-gloss black with one-piece decorative frame in matt aluminium look

Exhaust system
dual branch, with oval tailpipe trims

Sports exhaust system
dual branch, with oval tailpipe trims in black, for an enhanced sound experience

Rear wing
in TT RS design, fixed to the tailgate

Rear spoiler
can be extended electrically depending on vehicle speed, in place of the TT RS rear wing; automatically extends at 120 km/h, retracts at 80 km/h; can also be controlled manually using a button in the centre console

Model name/logo
TT RS on the radiator grille and on the rear

Aluminium tank cap
with embossed TT logo

Seats/seating comfort
Rear seat system 2 rear seats, approved for people up to 1.50 m tall or children up to 12 years of age and 1.25 m tall in a child seat. (TT RS Coupé)

4-way lumbar support
with electrical vertical and horizontal adjustment for the front seats. (Not available in conjunction with TT RS bucket seats in front)

Electrically adjustable front seats
including electrical 4-way lumbar support, electric adjustment of fore/aft position, seat height and seat and backrest angle. (Not available in combination with TT RS bucket seats in front)

Folding rear seat backrests
split and folds down in a 50:50 ratio (TT RS Coupé)

Seat heating, front
3 settings, including side bolster heater

Head restraints, front
height, adjustable, integrated at TT RS bucket seats, front

ISOFIX child seat mounting
for the front-passenger seat, bracket for fastening ISO-FIX child seats in accordance with ISO standard. (Not available in conjunction with TT RS bucket seats, front)

ISOFIX child seat mounting and rear seat bench with child seat group III approval
ISOFIX child seat mounting for the two rear seats, bracket for fastening child seats in accordance with ISO standard; rear seat bench with child seat group III approval (in accordance with ECE R44). (TT RS Coupé)

Seat covers/leather upholstery and trim
Alcantara/Leather combination head restraints and seat side bolsters in leather (with contrasting seams), seat centre panels and door panel inserts in Alcantara; includes TT RS embossed logo in the front seat backrests. (Can only be ordered in conjunction with sports seats, front)

Silk Nappa leather upholstery and trim
head restraints and seat side bolsters (with contrasting seams) and seat centre panels in leather, stripes in seat side bolsters and inserts in the seat centre panels with perforation; door trim inserts in leather (to match seat colour); includes TT RS embossed logo in the front seat backrests. (Can only be ordered in conjunction with sports seats, front)

Fine Nappa leather upholstery and trim
head restraints and seat side bolsters (with contrasting seams) and seat centre panels in leather, inserts in the seat side bolsters, in the seat centre panel in the upper area of the front seat backrests and door trims in leather with TT perforation; including TT RS embossed logo in the front seat backrests. (Can only be ordered in conjunction with TT RS bucket seats, front)

Audi exclusive leather upholstery and trim in Fine Nappa leather
seat covers, head restraints, door trim inserts and arm support on the centre console (if ordered) in Fine Nappa leather; includes TT RS embossed logo in the front seat backrests, floor mats with leather piping. Colours for the seat covers, seams and leather piping can be freely chosen from the Audi exclusive range. From quattro GmbH

Audi exclusive Fine Nappa leather upholstery and trim including additional items
seat covers, head restraints, door trim inserts, door armrests, door pull handles, centre console armrest and trim, handbrake grip, gear/selector lever knob, gear lever gaiter and instrument panel cover in Fine Nappa leather, including TT RS embossed logo in the front seat backrests; floor mats with leather piping. Colours for the seat covers, seams and leather piping can be freely chosen from the Audi exclusive range. From quattro GmbH

Audi exclusive Alcantara/Leather upholstery and trim
seat centre panels and door trim inserts in Alcantara, seat side bolsters, head restraints and centre console armrest (if ordered) in Fine Nappa leather, including TT RS embossed logo in the front seat backrests; floor mats with leather piping. Colours for the seat covers, seams and leather piping can be freely chosen from the Audi exclusive range. From quattro GmbH

Heat protection
(in sunlight) for the head restraints, seat and side bolsters and seat centre panels; for Alcantara/Leather combination (without seat centre sections) and leather upholstery and trim. The special colour pigmentation of the leather prevents excessive build-up of heat. The infra-red radiation contained in the sunlight is reflected. The heat protection can reduce the surface temperature by up to 20°C

Leather package
handbrake grip in perforated leather, additional centre console armrest in black Fine Nappa leather with contrasting seams in silver; door pull handles in black Fine Nappa leather

Extended leather package
handbrake grip in perforated leather, additional centre console armrests, door armrests, instrument panel cover and centre console trim in black Fine Nappa leather with contrasting seams in silver; door pull handles in black Fine Nappa leather

Steering wheels/gear levers/controls
TT RS leather-covered multifunction sports steering wheel, 3-spoke design with flattened base, with full-size airbag and TT RS emblem, adjustable for height and reach; cover in perforated leather with contrasting seams in silver; for the operation of all Audi radio systems and – if ordered – the voice control system (TT RS Coupé), for the mobile phone fitting or the Bluetooth interface; in S tronic vehicles with aluminium-look shift paddles behind the steering wheel

Gear/selector lever knob
with aluminium-look trim ring, gear lever gaiter in black leather with contrasting seams in silver

Steering wheel rim in Audi exclusive leather
available in all Audi exclusive colours. From quattro GmbH

Controls in Audi exclusive leather
leather trim for steering wheel rim, gear/selector lever and gear lever gaiter as well as handbrake grip, available in all Audi exclusive colours. From quattro GmbH

Controls in Audi exclusive black suede
cover for steering wheel rim, gear/selector lever knob and handbrake grip in black suede. From quattro GmbH

Climate control
Automatic air-conditioning in special TT look, CFC-free, with sunlight-dependent control; electronically regulates the air temperature, air flow rate and air distribution; ram air control and recirculation mode, activated carbon filter
Luggage securing and storage systems
Glove compartment on the front passenger side, lockable, with light
Storage package storage nets in the front-passenger footwell and on the front seat backrests, storage compartment under the front seats and storage net in boot (TT RS Coupé), and 2 additional storage compartments on the rear panel behind the seats (TT RS Roadster). (Not available in conjunction with TT RS front bucket seats)
Drinks holder 2, integrated into the centre console
Lashing points in the luggage compartment, 4, to secure loads (TT RS Coupé)
Load-through facility with removable ski bag for practical transportation of long objects, e.g. up to 2 pairs of skis up to 190 cm in length (TT RS Roadster). (Not available in conjunction with TT RS front bucket seats)
Luggage compartment cover removable. (TT RS Coupé)
Further interior equipment
Pedals and footrests on aluminium look
Footwell trim and floor mats in black carpet, floor mats with silver piping
Audi exclusive floor mats with TT RS logo From quattro GmbH

Headlining in Audi exclusive Alcantara

individual choice of colour for headlining from a range of Audi exclusive colours (TT RS Coupé). From quattro GmbH

Door sill trims with aluminium inlay and TT RS logo
--

Electric windows with safety system to limit maximum closing force, one-touch opening/closing function; convenience opening/closing via central locking
--

Cigarette lighter and ashtray in the front centre console
--

Extended aluminium look on interior for vents, controls for radio system, rotary light switch and steering wheel spokes
--

MMI® and navigation systems

Navigation system with MMI® control logic 6-inch monochrome display in the centre console for entering destination and route description, dynamic route guidance (where available), radio with twin tuner, CD player for navigation CD, audio or MP3 CDs, aerial diversity, AUX-IN connection, arrow display in the driver information system; includes aerial and 9 active loudspeakers. Navigation CD for countries includes main transport links in Europe (where digitised)

Navigation system plus with MMI® control logic with display frame in high-gloss black, includes 2 navigation DVDs, 6.5-inch TFT colour display (800 x 480 pixels) with 3D map display, dynamic route guidance (where available), radio with twin tuner, DVD drive for navigation DVD, audio or MP3 CDs (cannot be played when navigation system is being used), 2 integral MMC/SDHC card readers for MP3 (up to 32 GB), AUX-IN connection, arrow display in the driver information system; includes aerial and 9 active loudspeakers, connection to Audi music interface is possible

Navigation data (2 DVDs) contain navigation data for the following countries (where digitised): Andorra, Austria, Belgium, Croatia, Czech Republic, Denmark, Estonia, Finland, France, Germany, Great Britain, Greece, Hungary, Ireland, Italy,

Latvia, Liechtenstein, Lithuania, Luxembourg, Monaco, the Netherlands, Norway, Poland, Portugal, San Marino, Slovakia, Slovenia, Spain (includes Canary Islands), Sweden, Switzerland, the Vatican City

Driver information system a monochrome display provides you with information from the trip computer, auto-check system, MMI system display items and a digital speed display. The display is also used to indicate the current gear in vehicles with manual transmission. TT RS menu with boost pressure and oil temperature display as well as a laptimer

Radio and TV systems

chorus radio with single-CD player, 12-station memory, FM (VHF) and AM (MW) reception, soft-key control concept and 3-line graphic display, CAN-bus networking, speed-dependent volume control, phase diversity, 4 passive loudspeakers, total output 40 watts

concert radio as for chorus radio, but is also MP3-compatible, includes 5-channel amplifier and 9 active speakers, total output 140 watts, AUX-IN connection

Rod aerial on left rear quarter panel. (TT RS Roadster)
--

symphony radio as for concert radio but with additional TP memo function, with integral MP3-compatible 6-disc CD changer (instead of the internal single-CD player)

TV reception reception of analogue and digitally-broadcast (DVB-T) unencrypted television stations (MPEG-2 standard), supports teletext and Electronic Programme Guide (EPG). Facility to connect 2 external AV sources via the optional adapter cable. TV reception depends on local analogue and digital network availability. No AV or TV video output when driving (audio output available when driving). (Can only be ordered in conjunction with navigation system plus)

BOSE Surround Sound the system is tuned for the interior acoustics; dynamic driving noise compensation, 8-channel amplifier with a total output of 255 Watts, 12 high-performance loudspeakers including centre speaker and subwoofer – for an outstanding audio experience

CD changer in the glove compartment, for 6 CDs, vibration-proof, easily accessible; each CD can be loaded and changed individually

Audi music interface for connecting generation 4 and higher Apple iPods, an Apple iPhone (music functionality) as well as USB storage media and MP3 players. The Audi music interface is located in the glove compartment and operated via navigation system plus or the TT RS leather-covered multifunction sports steering wheel. Please contact your Audi partner for information on other compatible MP3 players. If Audi music interface is ordered the separate AUX-IN connection is omitted. Note: can only be ordered in conjunction with navigation system plus and can only be used with a special adaptor cable (Audi Genuine Accessories).

Adapter cable kit for Audi music interface consisting of 2 connection cables to connect iPods/iPhones or data storage devices/media players with a USB port (type A); other adapter cables are available from Audi Genuine Accessories

Rod aerial on left rear quarter panel. (TT RS Roadster)

Audi exclusive iPod fitting console in the glove compartment, limited iPod operation via radio or TT RS leather-covered multifunction sports steering wheel; the iPod is charged in the console during use. Please contact your Audi partner for information on compatible iPod variants. (Cannot be ordered in conjunction with navigation system plus.) From quattro GmbH

Audi exclusive USB fitting console in the glove compartment for USB sticks or MP3 players with USB extension cable; limited operation via radio or TT RS leather-covered multifunction sports steering wheel. (Cannot be ordered in conjunction with navigation system plus.) From quattro GmbH

Telephones and communications
Bluetooth interface Bluetooth-compatible mobile phones can be connected to the vehicle via the interface. Hands-free calls in the vehicle possible via microphone

Mobile phone fitting (Bluetooth) comprises a hands-free facility and fitting for an optional mobile-specific charger; operation via the TT RS leather-covered multifunction sports steering wheel. Please contact your Audi partner for adapters and information about which mobile phones are compatible

Voice control system for navigation system plus the basic functions of the navigation system, radio, CD player, mobile phone fitting and CD changer can be operated by voice control. (TT RS Coupé)

Assistance systems

Hill start assist After the foot brake is pressed for a while when the vehicle is stationary, the brake pressure that has been built up is maintained for a short while after the brake is released; this automatic braking action makes hill-starts much easier and more comfortable

Parking system, rear makes reverse parking easier by indicating acoustically how far away the vehicle is from an obstacle; measurement is by ultrasonic sensors concealed in the bumper stalk

Cruise control system maintains any set speed above approx. 30 km/h, provided engine power output and engine braking effect permit it; operation via separate steering column stalk

Side airbags, front integrated into the seat backrests. (Not available with TT RS front bucket seats)
--

Integral head restraint system In the event of a rear-end collision, the design of the seat restrains the upper torso and supports the head, thereby increasing safety and reducing the danger of whiplash

Audi magnetic ride adaptive damper system with individual selection of suspension tuning (Normal/Sport) by touching the Sport button on the front centre console

Braking system diagonally-split 18-inch high performance braking system, anti-lock braking (ABS) with electronic brake force distribution (EBD), hydraulic brake assist, adapted brake booster function, composite front brake discs, ventilated and perforated, ventilated rear brake discs

Brake callipers painted in high-gloss black

Technology/safety

Body in Audi Space Frame (ASF) construction innovative combination of aluminium and steel, a high level of stiffness for better handling, greater stability and enhanced safety

Side impact protection comprising bend-resistant aluminium impact beams in the doors; activation of side airbags by pressure sensors in the doors; protective side padding in the doors

Rollover bar with aluminium look on rear, for increased driver and front-passenger safety. (TT RS Roadster)

Audi exclusive leather-trimmed rollover bars leather to match seat upholstery, available in all Audi exclusive and standard colours. From quattro GmbH. (TT RS Roadster)

Full-size airbags for driver and front-passenger, 2-stage deployment, with deactivation switch for front-passenger airbag

Side airbags, front integrated into the seat backrests. (Not available with TT RS front bucket seats)

Integral head restraint system In the event of a rear-end collision, the design of the seat restrains the upper torso and supports the head, thereby increasing safety and reducing the danger of whiplash

Safety steering column increases the safety potential of the seat belts and air bag; with mechanical angle and axial adjustment

Instrument cluster TT RS specific with black dials, red needles and dynamic ready-check feature; with controllable lighting; coolant and outside temperature display, rev counter with digital clock and date display, speedometer with disproportion-al display, odometer/trip odometer, fuel gauge, warning and indicator lights, service interval display

Seat belts 3-point inertia-reel belts for all seats, with belt tensioners and belt force limiters at front

Audi exclusive seat belts available in various Audi exclusive colours. From quattro GmbH

Seat belt reminder for the driver’s seat; an acoustic and visual warning signal reminds you to fasten your seat belt

Warning and indicator lights for, among other things: airbag, ABS, ESP/ASR, hand-brake on, EDL electronics, alternator, lights, main beam, indicators, braking system, engine oil pressure, open tailgate, engine electrics, washer fluid, rear spoiler (if ordered)

Warning triangle in the luggage compartment under the loading floor

First-aid kit in the right storage compartment of the rear seats (TT RS Coupé) or in the compartment between the seat backrests (TT RS Roadster)

Anti-lock braking system ABS with electronic brake force distribution and hydraulic brake assist

Traction control ASR reduces spinning of the drive wheels by reducing engine output – thereby improving traction and stability on the road surface

Electronic differential lock EDL On surfaces with varying levels of grip, this start-off assistant automatically brakes the drive wheels on the surface that is too slippery, thereby ensuring powerful progress

Electronic Stabilisation Programme ESP with Sport mode, can be disabled in 2 stages, with hydraulic brake assist and emergency braking display; improves stability in critical driving situations by means of targeted braking of individual wheels and intervention in the engine management system

Electromechanical power steering electromechanical, speed-dependent power steering, with active reset assistance, automatic straight-line running correction system, e.g. in side winds or on roads with a lateral incline; energy-saving operation, damping of road-induced interference

Reduced gear lever travel shift travel is shortened; sporty short gear lever. (For manual transmission only)

Manual transmission 6-speed, fully synchronised

S tronic 7-speed electrohydraulically-operated dual-clutch transmission

quattro® permanent all-wheel drive with variable torque distribution, electronic differential lock EDL via braking intervention on all driven wheels

Electronic top speed regulation at 280 km/h and carbon design package for the engine compartment

Sport button in the centre console; pressing the button influences the accelerator characteristics for a more progressive response from the engine, the valve control of the exhaust system for a modified sound characteristic as well as the damper characteristics of the Audi magnetic ride (if ordered) for more dynamic suspension

Recuperation Increasing the generator voltage converts kinetic energy into usable electrical energy when the vehicle is coasting or braking. This energy is then used to assist the alternator during subsequent acceleration – thereby enabling fuel savings of up to 3% to be achieved

Model	TT RS Coupé	TT RS Roadster		
Engine type	5-cylinder inline petrol engine with direct fuel injection and exhaust gas turbocharging with charge air cooling	5-cylinder inline petrol engine with direct fuel injection and exhaust gas turbocharging with charge air cooling		
Displacement in cc (valves per cylinder)	2480 (4)	2480 (4)		
Max. output ¹ in kW at rpm	250/5400–6500	250/5400–6500		
Max. torque in Nm at rpm	450/1600–5300	450/1600–5300		
Power transmission/wheels				
Type of drive	quattro® permanent all-wheel drive	quattro® permanent all-wheel drive		
Transmission	6-speed manual transmission [7-speed S tronic]	6-speed manual transmission [7-speed S tronic]		
Wheels	Cast aluminium wheels, 9 J x 18	Cast aluminium wheels, 9 J x 18		
Tyres	245/40 R 18	245/40 R 18		
Weights/capacities				
Unladen weight ² in kg	1525 [1550]	1585 [1610]		
Gross vehicle weight in kg	1850 [1875]	1830 [1855]		
Roof load/trailer nose weight (TT RS Roadster) in kg	75	20		
Tank capacity, approx., in l	60	60		
Performance/consumption ³				
Top speed in km/h	250 ⁴	250 ⁴		
Acceleration 0–100 km/h in s	4.6 [4.3]	4.7 [4.4]		
Fuel grade	Sulphur-free SuperPlus 98 RON ⁵	Sulphur-free SuperPlus 98 RON ⁵		
Fuel consumption ⁶ in l/100 km	urban 12.6 [12.3] <p>extra-urban 6.8 [6.3]</p> combined 9.0 [8.5]	urban 12.8 [12.4] <p>extra-urban 7.0 [6.4]</p> combined 9.1 [8.6]		
CO ₂ emissions ⁶ in g/km	urban 294 [285] <p>extra-urban 159 [146]</p> combined 209 [197]	urban 297 [287] <p>extra-urban 168 [148]</p> combined 212 [199]		
Emissions standard	EU 5	EU 5		

Notes

¹ The figure given has been calculated in accordance with the specified measuring procedure (current version of Directive 80/1269/EEC).

² Weight of car, unladen, with driver (68 kg), luggage (7 kg) and fuel tank 90 % full, calculated in accordance with the current version of Directive 92/21/EEC. Optional equipment may increase the car's unladen weight and drag coefficient, whereupon the possible payload limit and the top speed will be reduced accordingly.

³ A vehicle's fuel consumption and CO₂ emissions do not just depend on how efficiently the vehicle uses the fuel, but are also influenced by driving behaviour and other non-technical factors. CO₂ is the greenhouse gas primarily responsible for global warming.

⁴ Regulated.

⁵ We recommend using sulphur-free SuperPlus unleaded fuel RON 98 complying with DIN EN 228. If this is not available, use sulphur-free Super unleaded fuel RON 95 according to DIN EN 228; power output will be slightly reduced.

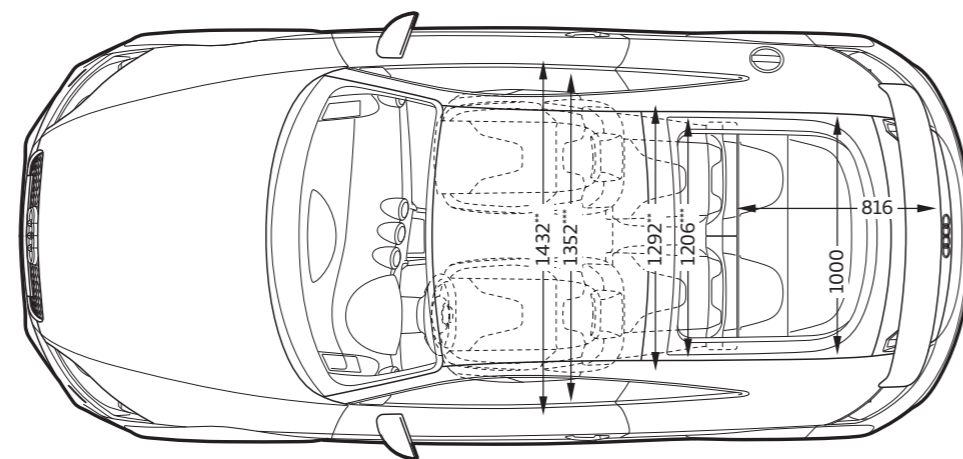
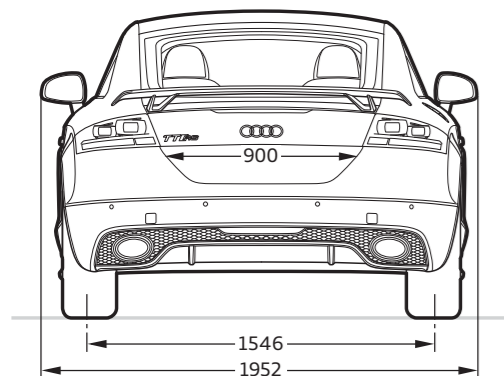
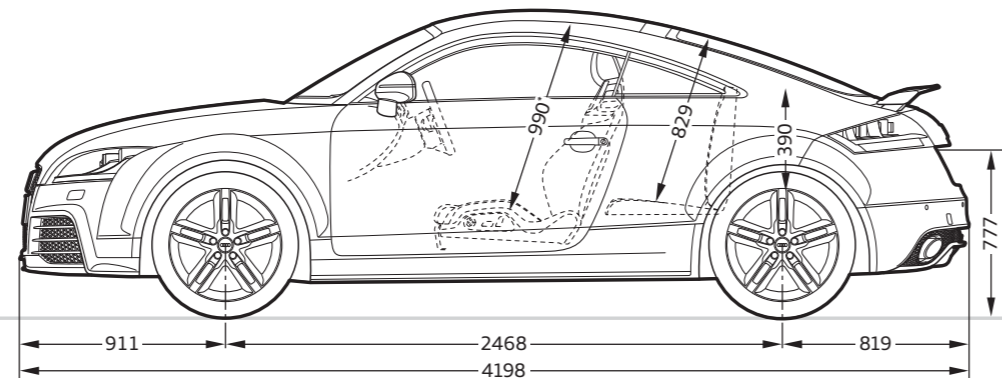
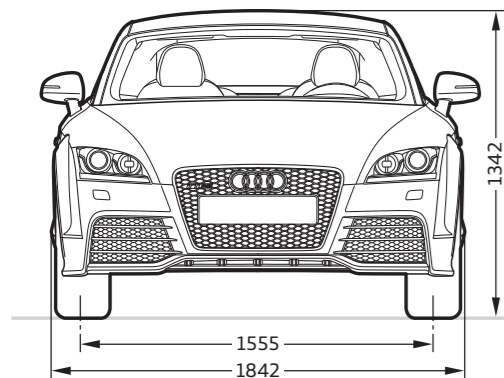
⁶ The figures given were calculated using the specified measuring procedures. The figures do not refer to one individual vehicle and do not form part of any offer, but rather should be used purely for purposes of comparison between the different vehicle models.

Important note

Inspections are due as shown by the service display.

^[] Data for S tronic.

Audi TT RS Coupé

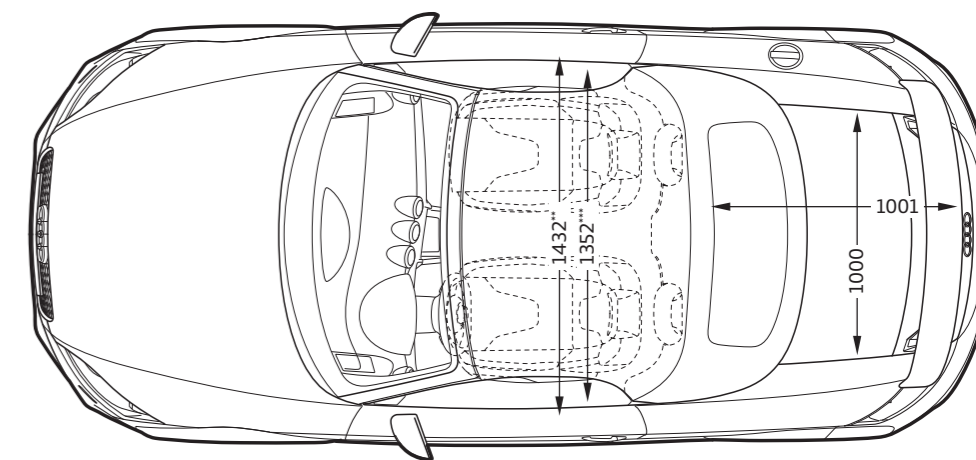
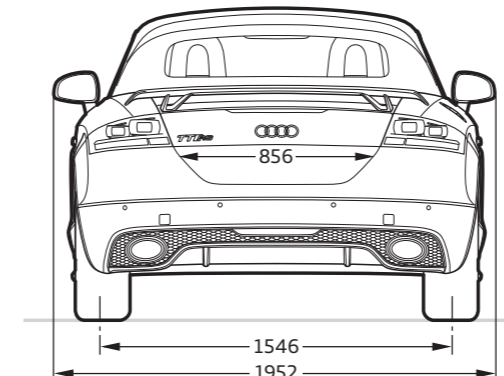
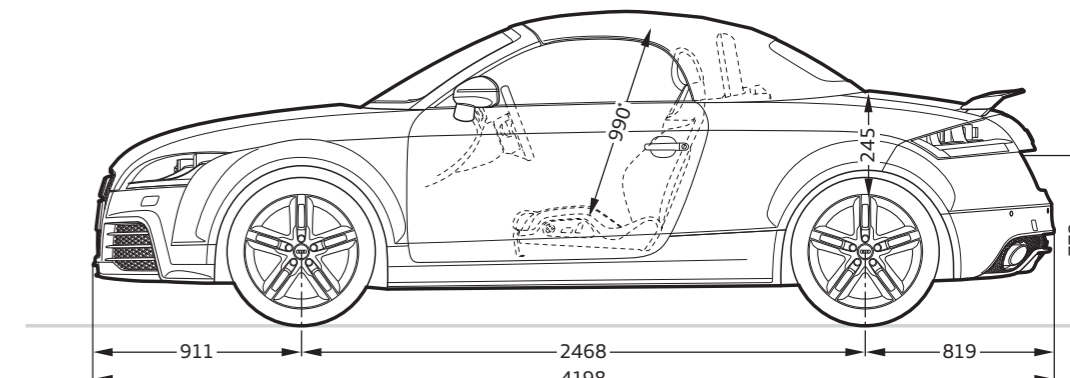
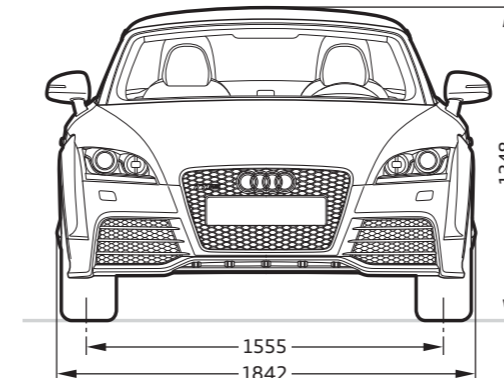
**Dimensions in millimetres.**

Dimensions are for vehicle at unladen weight.

Luggage compartment volume 292/700 l (measured by the VDA method using 200 x 100 x 50 mm blocks; second value is with the rear seat folded down and the vehicle loaded up to roof height). Turning circle approx. 10.96 m.

*Maximum headroom. **Width of elbow room. ***Width of shoulder room.

Audi TT RS Roadster

**Dimensions in millimetres.**

Dimensions are for vehicle at unladen weight.

Luggage compartment volume 250 l (measured by the VDA method using 200 x 100 x 50 mm blocks). Turning circle approx. 10.96 m.

*Maximum headroom. **Width of elbow room. ***Width of shoulder room.

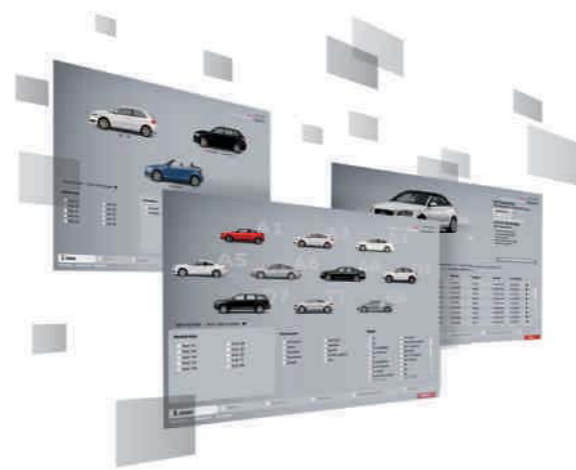
At Audi, you get much more than just an Audi.

Anyone who chooses an Audi chooses a brand that offers its customers more. More individuality. More exclusivity. And more fascination.



www.audi.com

Vorsprung durch Technik, and everything that it entails: The legendary Audi history, dates of unforgettable events and ground-breaking innovations – let your fascination grow with the Audi brand.
> www.audi.com



Audi configurator

Create your own personal Audi using the Audi configurator. All current models, engines, colours and equipment options are available for you to choose from.
> www.audi.com



Audi tv

On Audi tv you can discover whole new sides to our brand with the four rings: exciting commentaries on our models, technical innovations, fascinating events from the fields of motorsport, tradition, culture and lifestyle. Take a look behind the scenes. The latest news every day. Round the clock.
> www.audi.tv



Audi Bank

Financing. Leasing. Insuring. Whichever new Audi you decide on, every quotation from the Audi Bank is individually tailored to you. Our special offer packages, for example, combine current financing and leasing options with comprehensive insurance protection and thus offer you unlimited mobility.
> www.audi.com

	Page	TT RS Coupé	TT RS Roadster
Paints	43		
Ibis White		■	■
Monza Silver, metallic		■	■
Suzuka Grey, metallic		■	■
Daytona Grey, pearl effect		■	■
Misano Red, pearl effect		■	■
Sepang Blue, pearl effect		■	■
Phantom Black, pearl effect		■	■
Panther Black, crystal effect		■	■
Audi exclusive individual paints		■	■
Hood colours	44		
Hood, Black		–	■
Hood, Dark Grey		–	■
Seats/seat covers	45		
Sports seat, front		■	■
TT RS bucket seats, front		■	■
Alcantara/Leather, black		■	■
Silk Nappa leather, black		■	■
Silk Nappa leather, silver		■	■
Fine Nappa leather, black		■	■
Audi exclusive leather upholstery and trim		■	■
Inlays	47		
Matt brushed aluminium		■	■
Ibis white		■	■
Phantom black		■	■
Wheels/tyres	49		
Cast aluminium wheels, 5-double-spoke design, size 9 J x 18 with 245/40 R 18 tyres		■	■

	Page	TT RS Coupé	TT RS Roadster
Cast aluminium wheels, 5-arm rotor design, size 9 J x 19 with 255/35 R 19 tyres		■	■
Cast aluminium wheels, 5-arm rotor design in titanium look, high-gloss turned finish, size 9 J x 19 with 255/35 R 19 tyres		■	■
Cast aluminium wheels, 5-segment spoke design, size 9 J x 19 with 255/35 R 19 tyres		■	■
Forged aluminium wheels, 7-double-spoke design, polished, 2-tone, size 9 J x 20 with 255/30 R 20 tyres		■	■
Cast aluminium winter wheels, 5-double-spoke design, size 9 J x 18 with 245/40 R 18 winter tyres		■	■
Cast aluminium winter wheels, 5-arm rotor design, size 9 J x 19 with 255/35 R 19 winter tyres		■	■
Wheel bolts, anti-theft		■	■
Tyre repair kit		■	■
Tyre pressure control display		■	■
Vehicle tool kit		■	■
Jack		■	■
Lights	50		
xenon plus headlights, including headlight cleaning system		■	■
Daytime running lights		■	■
adaptive light		■	■
Main beam assist		■	■
Interior lighting		■	■
Lighting package		■	■
Door reflectors		■	■
Rear light		■	■
Rear fog lights		■	■
Lights styling package		■	■
Mirrors	50		
Exterior mirrors with integral LED indicators		■	■
Exterior mirrors, heated		■	■

	Page	TT RS Coupé	TT RS Roadster
Exterior mirrors, heated and electrically folding		■	■
Exterior mirrors, heated, electrically folding and automatically dimming		■	■
Exterior mirror housing in matt aluminium look		■	■
Exterior mirror housing painted in the vehicle's body colour		■	■
Exterior mirror housing in Audi exclusive carbon		■	■
Interior mirror		■	■
Interior mirror, automatically dimming with light/rain sensor (with digital compass display upon request)		■	■
Make-up mirrors		■	■
Roof systems	50		
acoustic hood		–	■
Wind deflector		–	■
Closing systems	50		
Central locking		■	■
Radio-operated remote control		■	■
Immobiliser, electronic		■	■
Fitting for Tracking Assistant		■	■
Garage door opener (HomeLink)		■	■
Anti-theft alarm		■	■
Glazing	50		
Heat-insulating glass		■	■
Dark-tinted windows (privacy glazing)		■	–
Windscreen		■	■
Rear window		■	■
Windscreen cleaning system		■	■
Further exterior equipment	50		
Matt aluminium styling package		■	■
Audi exclusive black styling package		■	■
Bumpers		■	■

	Page	TT RS Coupé	TT RS Roadster
Audi Singleframe		■	■
Exhaust system		■	■
Sports exhaust system		■	■
Rear wing		■	■
Rear spoiler		■	■
Model name/logo		■	■
Aluminium tank cap		■	■
Seats/seating comfort	51		
Rear seat system		■	–
4-way lumbar support		■	■
Electrically adjustable seats, front		■	■
Folding rear seat backrests		■	–
Seats heating, front		■	■
Head restraints, front		■	■
ISOFIX child seat mounting		■	■
ISOFIX child seat mounting and rear seat bench with child seat group III approval		■	–
Seat covers/leather upholstery and trim	51		
Alcantara/Leather combination		■	■
Silk Nappa leather upholstery and trim		■	■
Fine Nappa leather upholstery and trim		■	■
Audi exclusive Fine Nappa leather upholstery and trim		■	■
Audi exclusive Fine Nappa leather upholstery and trim including additional items		■	■
Audi exclusive Alcantara/Leather upholstery and trim		■	■
Heat protection		■	■
Leather package		■	■
Extended leather package		■	■
Steering wheels/gear levers/controls	51		
TT RS leather-covered multifunction sports steering wheel, 3-spoke design		■	■
Gear/selector lever knob		■	■

	Page	TT RS Coupé	TT RS Roadster
Steering wheel rim in Audi exclusive leather		■	■
Controls in Audi exclusive leather		■	■
Controls in Audi exclusive black suede		■	■
Climate control	52		
Automatic air conditioning		■	■
Luggage securing and storage systems	52		
Glove compartment		■	■
Storage package		■	■
Drinks holder		■	■
Lashing points		■	–
Load-through facility with removable ski bag		–	■
Luggage compartment cover		■	–
Further interior equipment	52		
Pedals and footrests in aluminium look		■	■
Footwell trim and floor mats		■	■
Audi exclusive floor mats with TT RS logo		■	■
Headlining in Audi exclusive Alcantara		■	–
Door sill trims with aluminium inlay		■	■
Electric windows		■	■
Cigarette lighter and ashtray		■	■
Extended aluminium look on interior		■	■
MMI® and navigation systems	52		
Navigation system with MMI® control logic		■	■
Navigation system plus with MMI® control logic		■	■
Navigation data (2 DVDs)		■	■
Driver information system		■	■
Radio and TV systems	52		
chorus radio		■	■

	Page	TT RS Coupé	TT RS Roadster
concert radio		■	■
symphony radio		■	■
TV reception		■	■
BOSE Surround Sound		■	■
CD changer		■	■
Audi music interface		■	■
Adaptor cable kit for Audi music interface		■	■
Rod aerial		–	■
Audi exclusive iPod fitting		■	■
Audi exclusive USB port		■	■
Telephone and communications	53		
Bluetooth interface		■	■
Mobile phone fitting (Bluetooth)		■	■
Voice control system for navigation system plus		■	–
Assistance systems	53		
Hill start assist		■	■
Parking system, rear		■	■
Cruise control system		■	■
Suspension/brakes	53		
TT RS sports suspension		■	■
Audi magnetic ride		■	■
Braking system		■	■
Brake callipers		■	■
Technology/safety	53		
Body in Audi Space Frame (ASF) construction		■	■
Side impact protection		■	■
Rollover bar		–	■
Audi exclusive leather-trimmed rollover bars		–	■

	TT RS Coupé	TT RS Roadster
Full-size airbags	■	■
Side airbags, front	■	■
Integral head restraint system	■	■
Safety steering column	■	■
Instrument cluster	■	■
Seat belts	■	■
Audi exclusive seat belts	■	■
Seat belt reminder	■	■
Warning and indicator lights	■	■
Warning triangle	■	■
First-aid kit	■	■
Anti-lock braking system ABS	■	■
Traction control ASR	■	■
Electronic differential lock EDL	■	■
Electronic Stabilisation Programme ESP	■	■
Electromechanical power steering	■	■
Reduced gear lever travel	■	■
Manual transmission	■	■
S tronic	■	■
quattro®	■	■
Electronic top speed regulation at 280 km/h and carbon design package	■	■
Sport button	■	■
Recuperation	■	■

Equipment of the illustrated TT RS Roadster:
Paintwork: Phantom Black pearl effect with black hood
Exterior equipment: matt aluminium styling package
Wheels: forged aluminium wheels, 7-double-spoke design, polished, 2-tone
Seats/seat covers: sports seats in silver Silk Nappa leather with contrasting seams in black
Inlays: matt brushed aluminium

Equipment of the illustrated TT RS Coupé:
Paintwork: Suzuka Grey, metallic
Wheels: cast aluminium wheels in 5-arm rotor design in titanium look, high-gloss turned finish
Seats/seat covers: TT RS front bucket seat in black Fine Nappa leather with contrasting seams and TT perforation
Inlays: matt brushed aluminium

quattro GmbH
85045 Ingolstadt
www.audi.com
Valid from February 2011

Printed in Germany
158/1191.00.18

The models and equipment versions illustrated and described in this brochure and some of the services listed are not available in all countries. Some of the cars illustrated are equipped with optional equipment for which an extra charge is made. Details concerning the delivery specifications, appearance, performance, dimensions and weights, fuel consumption and running costs of the vehicle were correct to the best of our knowledge at the time of going to press. Deviations from the colours and shapes shown in the illustrations may occur. No liability is accepted for errors and printing errors. The right to introduce modifications is reserved. Not to be reproduced, including in part, without the written approval of AUDI AG.

This brochure is printed on paper made from pulp bleached without the use of chlorine.