

CT

CT200h











CONCEPT



The CT200h premium compact distills the Lexus philosophy into a car sized to suit city life. Designed for driving fun, you'll enjoy the outstanding agility and elegant ride of a very special hybrid.



» INTELLIGENCE





The CT200h premium compact hybrid was created with the aim of delivering driving you can truly enjoy. The front profile captures the essence of the Lexus philosophy, with a sharply defined appearance that imprints itself in your heart at a glance. The styling blends supple with sharp elements that both harmonize and contrast with each other. Each time you get in, you'll discover unique Lexus details. You'll also experience direct steering response that enhances the enjoyment of the basics of performance, driving and turning, together with

refined ride comfort that elevates the element of fun. The CT200h's meticulously engineered driving characteristics invite you to fully enjoy the feeling of being at one with the car.



DESIGN



The CT200h's lines trace a beautiful silhouette that is bold yet precise, and an interior enriched by Lexus's aesthetic sense, right down to the details. For drivers, its design truly embodies the pleasure and fun of hands-on driving with their entire body.



» INTELLIGENCE



EXTERIOR

The dynamic front profile with its wide stance and low center of gravity is complemented by the sharp rear garnish. The distinctive design exudes presence, inviting you to enjoy an aggressive approach to driving.



INTERIOR

The low sporty seating position and spacious layout let you concentrate on driving without changing your line of sight or posture. The result is an open feeling combined with the pleasant sensation of being enveloped.

PERFORMANCE



The CT200h is designed to deliver a feeling of oneness between car and driver. Its agile performance is all about excitement, whether you're driving long straights that stretch out before you or through tight corners. The Lexus Hybrid Drive extracts the full potential of the motor and engine to deliver dynamic excitement. You'll enjoy the pleasure of becoming one with the car without any hesitation.

3

» INTELLIGENCE





LEXUS HYBRID DRIVE

Hybrid transmission

The Lexus Hybrid Drive's electric motor, generator and power split device are all housed in the hybrid transmission. Here, the two forces of the system - electrical and mechanical power - are combined using continuously variable gear ratios to produce seamless performance.



Advanced compact battery

Lexus Hybrid Drive features a high-output Ni-MH (Nickel-Metal Hydride) battery controlled by sophisticated energy-management software. Located under the rear luggage area, without compromising interior space, the battery is constantly recharged by the vehicle's operation and requires no external charging.

Power control unit

Located in the engine compartment, the groundbreaking power control unit is the brain of the Lexus Hybrid Drive and controls the allocation of power resources to help optimize efficiency at all times.



1.8-liter 4-cylinder engine

Featuring Start/Stop capability, EGR (Exhaust Gas Recirculation) and VVT-i (Variable Valve Timing-intelligent) technologies, the ultra-smooth Atkinson Cycle engine delivers exceptional fuel efficiency and significantly reduced emissions.

High-output electric motor

The electric motor works together with the engine to boost acceleration, and is the sole source of power in EV-Drive Mode. Generating instantaneous and linear torque, it provides excellent power output.*

Exhaust heat recovery

This compact unit helps warm up the 1.8-liter engine more quickly. Fitted to the exhaust system between the engine and catalytic converter, it allows the engine to switch off earlier and more often in cooler weather, leading to a reduction in fuel consumption and emissions.



Performance dampers

Performance dampers in both the front and rear further enhance the driver's feeling of oneness with the car. In addition to significantly sharpening the vehicle's handling characteristics by quickly absorbing body pliancy and minuscule vibrations that occur while driving, they enhance ride comfort and quietness. The result is exceptional all-round performance that's very responsive, together with a sophisticated ride.

*Exclusive to F SPORT

Aerodynamics

The CT200h has class-leading aerodynamics, thanks to its low hood, long roofline and rear spoiler/diffuser/fins. A look underneath this breakthrough compact reveals more, with aerodynamic engine and fuel tank covers and surfboard-like fins that provide good stability. This attention to detail not only enhances dynamic performance and handling, but also contributes to fuel efficiency and reduces wind noise.



Drive mode select

The CT200h has four selectable drive modes. EV-Drive Mode provides whisper quiet, emission-free progress using only electric power. Eco Mode and Normal Mode combine engine and electric power for relaxed higher speed driving. Sport Mode delivers a more dynamic driving experience.

*Certain conditions such as engine coolant temperature, battery charge status, and vehicle speed may prevent you from being able to activate EV-Drive Mode. Driving range depends on factors such as battery charge status.

Photos for reference only.

FEATURES



The CT200h's refined utility is meticulously crafted for your enjoyment of driving fun. It invites you to go on a drive that will set your heart beating.



» INTELLIGENCE





Each detail in the CT200h embodies the unique spirit of Lexus. At start-up, the LED DRLs (Daytime Running Lamp) emit a sharp L-shaped line of light that creates a powerful impression. A detailed L-shaped pattern on the lens surface creates an appearance that is simultaneously transparent and three-dimensional, signaling that its Lexus identity is embedded into every aspect of its design. The LED rear combination

lamps also emit an L-shaped line of light and feature a radial, L-shaped pattern on the lens surface. The cockpit design supports focused driving with a large, easy-to-read display and Remote Touch controls that enable operation of navigation, audio, and air-conditioner functions without changing your line of sight or posture. Each time you get into the CT200h, you'll feel the essence of Lexus in every detail.



Bi-Beam LED headlamps

The CT200h features low- and high-beam LED headlamps, together with LED DRLs that illuminate in an L-shape. LEDs use less energy, last longer and activate more quickly than conventional bulbs.

LED rear combination lamps

LEDs are used for the tail lamps, brake lamps, back-up lamps, rear fog lamp, rear turn signal lamps, and rear side markers. The array of LEDs helps to make the CT200h highly visible to following traffic.



Rear bumper

The wing-shaped rear lower garnish is finished with metallic silver paint, creating a sporty look with a low center of gravity.



Hybrid emblem

The CT200h is very environmentally friendly, producing low carbon dioxide emissions. Bearing all the quality hallmarks of Lexus, it sets the standards for premium compacts.

Moonroof

The power tilt and slide glass moonroof lets the desired amount of fresh air and light into the CT200h. One-touch operation is quick and convenient, while a manually operated sunshade provides shade as required.





7-inch EMV (Electro Multi-Vision) display

The 7-inch EMV display offer useful information such as audio, air conditioning, phone and fuel consumption.

Leather steering wheel

The three-spoke, leather-wrapped steering wheel has a sporty design. Easy-to-operate integrated switches give the driver control over audio, hands-free calls, and other functions without the need to take their hands off the wheel. They also enable switching of the information displayed on the multi-information display.



Luggage space

The CT200h's luggage space provides an unexpected combination of roominess and utility for a compact hybrid. The low position of the hybrid battery expands the amount of space available for luggage, with room for a golf bag or other large item with the rear seatbacks upright. In addition, the 60/40 split fold-down rear seatbacks create a deep, flat space, contributing to a car that can accommodate your sense of fun in various situations.

Lexus CT Premium Sound System

Speakers in the 10-speaker system feature bamboo charcoal resin diaphragms, natural materials that contribute to realizing an excellent sound space with a rich presence.



Lexus CT Premium Sound System

SAFETY



The CT200h's agile performance is underpinned by active and passive safety measures that utilize advanced technologies to deepen your peace of mind.



» INTELLIGENCE





Hill-start Assist Control

Hill-start Assist Control maintains braking pressure to help prevent the CT200h from moving backwards when starting on a slope. In addition to reducing driver fatigue, it also helps to minimize wheelspin on slippery inclines.



TRC (Traction Control System)

TRC enhances the ability to grip the road, especially when starting off or accelerating on uneven or slippery surfaces. Corrective measures are applied the moment the risk of wheelspin is detected, to help maintain traction.



VSC (Vehicle Stability Control)

An electronic system designed to help the driver maintain vehicle control under adverse conditions, VSC is not a substitute for safe driving practices. Factors including speed, road conditions and driver steering input can all affect whether VSC will be effective in preventing a loss of control.



Body structure to help reduce injury to pedestrians

The hood is optimized to help enhance excellent energy absorption in a collision with a pedestrian. In addition, the windshield wiper area is designed to help reduce pedestrian injuries in an accident.

Passenger safety cabin

For your safety, the CT200h has a strong passenger cabin. The car's main pillars are specially reinforced and high tensile steel has been used strategically throughout. Crumple zones front and rear absorb energy in a crash, as does the steering column, which is engineered to collapse on impact.



Ten airbags

The CT200h is equipped with ten SRS airbags and front seatbelt pretensioners and force limiters. In a collision, impact intensity sensors activate the dual-stage SRS driver airbag, dual-stage SRS front passenger airbag, and SRS side airbags (Front seats). Front seat occupants also benefit from SRS knee airbags, while SRS curtain shield airbags run the full length of the side windows.*



* The SRS (Supplemental Restraint System) airbags are supplemental devices to be used with the seatbelts. The driver and all passengers in the vehicle must wear their seatbelts properly at all times. Never install a rear-facing CRS (Child Restraint System) on the front passenger's seat. For a forward-facing CRS, it is recommended you use it in the rear seats. Please do not use accessories for the seats which cover the parts where the SRS side airbags should inflate. Such accessories may prevent the SRS side airbags from activating correctly, causing serious injury (Lexus genuine seat covers are specifically designed for models equipped with the SRS side airbags. To find out about availability in your area, please inquire at your local dealer). The photo shows all the SRS airbags activated for display purposes only (the SRS side and curtain shield airbags only inflate on the side of the collision in an actual accident). For details on these and other important safety features, be sure to read the Owner's Manual carefully.

F SPORT



F SPORT evolves the Lexus sport DNA that finds its ultimate expression in the LFA supercar, to enable more drivers to experience its exhilarating performance and unique personality. The F SPORT further refines the CT200h's focus on driving pleasure so drivers can enjoy a unique sense of oneness with the car, born of its ability to respond immediately to the driver's intentions in various situations.



» INTELLIGENCE





The CT200h's F SPORT package takes sporty performance to a higher level. Exclusive exterior design features highlight its dynamic and aggressive personality. The F SPORT also offers exclusive interior features that heighten expectation of outstanding performance.

In addition, it also incorporates a specially tuned suspension and enhancements to deliver sharp steering feel, flat cornering, and smooth ride comfort.



EXTERIOR & INTERIOR
COLORS

The CT200h is available in an array of exterior and interior colors, including conventional pairings of similar hues as well as bold combinations, so you can enjoy creating your very own Lexus.



White Nova Glass Flake <083>*



Sonic Quartz <085>#



Mercury Gray Mica <1H9>



Sonic Titanium <1J7>



Black <212>



Graphite Black Glass Flake <223>



Red Mica Crystal Shine <3R1>



Amber Crystal Shine <4X2>#



Heat Blue Contrast Layering <8X1>*



Deep Blue Mica <8X5>



Sparkling Meteor Metallic <8X9>



Black/White Nova Glass Flake <2L>*



Black/Mercury Gray Mica <2LL>*



Black/Red Mica Crystal Shine <2LM>*



Mercury Gray Mica/Red Mica Crystal Shine <2QA>#



Black/Heat Blue Contrast Layering <2QF>*



17-inch aluminum wheels#



17-inch aluminum wheels with Dark Premium Metallic surface treatment*

<FABRIC/SYNTHETIC LEATHER> (Superior)



Chateau

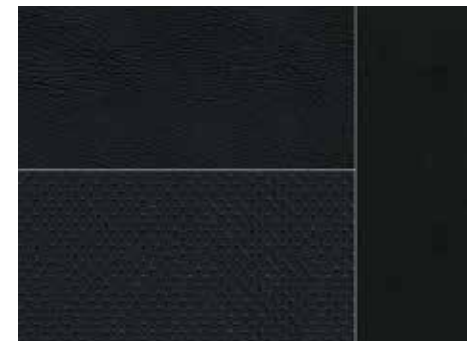


Black

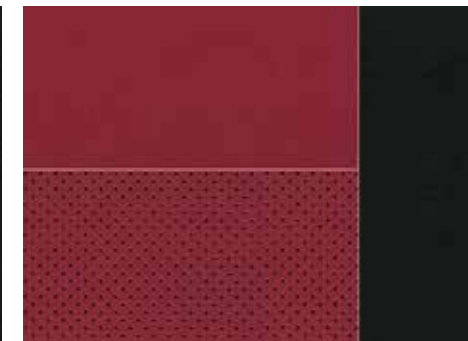


Red

<SMOOTH LEATHER> (F SPORT)



Black



Flare Red

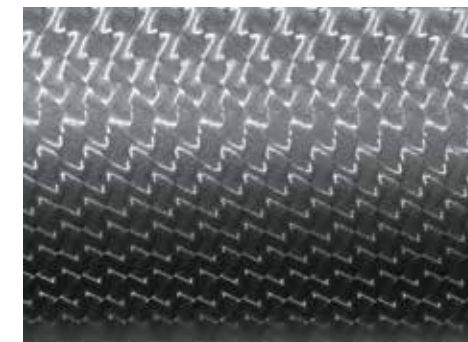


White

<TRIM>



Black#



Wedge Metal*

#Exclusive to Superior
*Exclusive to F SPORT

SPECIFICATIONS <CT200h>

DIMENSIONS & WEIGHT

Overall length:	4,355 mm
Overall width:	1,765 mm
Overall height:	1,455 mm
Wheelbase:	2,600 mm
Curb weight:	1,410-1,465 kg

ENGINE

Type:	1.8-liter, 4-cyl. in-line Twin Cam 16-valve (2ZR-FXE, unleaded)
Piston displacement:	1,798 cc
Max. output:	99 PS / 5,200 rpm
Max. torque:	142 Nm / 4,000 rpm

MOTOR

Type:	Permanent Magnet Synchronous
Max. output:	81 PS
Max. torque:	207 Nm
Total system output:	135 PS*

* Total system output from the engine and electric motor (using the battery), based on in-house measurements.



Photos for reference only.
Vehicle body color might differ slightly from the printed photos in this brochure.



HONG KONG FLAGSHIP SHOWROOM

G/F CENTRE PARC, 11 SHEUNG YUET ROAD, KOWLOON BAY, KOWLOON
TEL : 2820 4020


MACAU SHOWROOM

NO. 207-215, AV. DO DR.RODRIGO RODRIGUES, G/F BLOCK "C", NAM KWONG BUILDING, MACAU
TEL : (853) 2871 6655

HONG KONG SERVICE CENTRE

NORTH POINT TEL : 2880 1551 | KWAI CHUNG TEL : 2880 4900
CUSTOMER EXPERIENCE HOTLINE TEL : 2880 1395

 Lexus Hong Kong

 Lexushongkong

 www.lexus.com.hk