



LEXUS

CROWN MOTORS LTD.

MACKY CHAN

SALES CONSULTANT

Sales office:

Shop B-D, G/F, National Mutual Centre,
151 Gloucester Road, Wanchai, Hong Kong
Tel: (852) 2511 9430 Fax: (852) 2507 2654
Mobile: 9487 9332



LEXUS

IS 200



At Lexus, we always look for new and different directions in achieving unique and total driving excitement. With this ideal in mind, we have created the new IS200 luxury sports sedan, which is capable of fulfilling your every passion for action.

Sporting an innovative design concept, the IS200 offers you the individuality fully expressed through the perfect blending of dynamic high performance, precise handling and luxurious enjoyment. Compact yet spacious inside, the Lexus IS200 is a sedan imbued with the ideals of stability, control, quality and above all, sheer driving pleasure.

Lexus' quest for the finest automobile in the world is inspired by its mission to continuously provide customers with the ultimate in satisfaction. The introduction of the IS200 is yet more proof of the relentless pursuit of perfection sought in every challenge we set ourselves.



凌志不斷突破固有的框框，旨在於不同的駕駛層面上帶來非凡震撼。最新推出的 IS200 豪華動感房車，正是建基於這理念，完完全全地滿足駕駛人每一點對激情的渴求。

集獨特創意及動感設計於一身的 IS200，任何時間都與您一脈相連，發揮澎湃的動力和頂級的操控，挑戰駕駛極限。精巧而具時代感的外型、豪華寬敞的車廂配合高性能的引擎，進一步將穩定、操控、享受和樂趣達致完美平衡。

凌志矢志追求完美，時刻自我挑戰，朝著創造嶄新典範的目標邁進，務求令尊貴的凌志客戶體驗無窮的駕駛樂趣與滿足感。



MACKY CHAN
SALES CONSULTANT

Port

: 9487 9332



Super White Pearl Mica



Silver Metallic



Dark Gray Mica Metallic



Black



Red Mica Metallic



Dark Green Mica



Blue Mica

SHINING BEAUTY

To maintain its luster, the IS200 employs an advanced body paint composition to enhance resistance to ultra-violet light, the acidic and weathering elements of rain, alternative heat and cold, or corrosive wear and tear. The IS200 eye-catching deep colour coat matched with the two-tone interior is designed to ensure your long lasting satisfaction.

閃爍光芒

每部凌志 IS200 的車身油漆均以先進的配方調校，能有效抵擋陽光照射引致的褪色、雨水內酸性或侵蝕性物質、間斷的酷熱和寒冷、或潮濕鏽蝕。耀目的車身配襯以雙色豪華車廂內籠，更顯尊貴的跑車本色。



UNIQUE STYLING

- Short overhang with good turnaround performance
- Colour-keyed urethane bumpers and side protective moulding
- Sporty and elegant front grille
- Free-curve reflector type round automatic headlights
- Front and rear foglights
- Trunk door with special design to enable a wide trunk opening and low loading height
- European style roof type antenna
- 17-inch aluminum wheels *
- Power moonroof *

獨特外型

- 特短的車首車尾懸垂令操控更為靈巧
- 同色系化學纖維泵把及防刮花車身保護層
- 跑車式網形電鍍水箱欄柵
- 具時代感的圓形投射式自動感應開關車頭燈
- 前置及尾置式霧燈
- 行李箱門經特別設計，方便開啟提存行李
- 歐陸式車頂天線
- 17吋合金輪圈*
- 電動遮光玻璃天窗*

* Exclusive features for Premium and Sport versions
* Premium 版及 Sport 版特有設備





AMBIENT ENVIRONMENT

Lexus' engineers have conducted extensive sound analysis to evaluate different sounds produced due to different road conditions. The aim was to apply advanced NVH (Noise, Vibration and Harshness) technology to suppress annoying noises while tuning out dissonant frequencies. Through the effective placement of specialized sound-insulating materials to key areas, noise in the cabin has been reduced to a minimum. Below, the aerodynamics styling of IS200 has streamlined the underfloor to contribute to a low CD of 0.29 which ensure a quieter ride.

寧靜車廂

工程師詳細分析不同路面所產生的各種聲音，目的是更有效地於車廂內運用先進的吸音減震科技，減低擾人的噪音及惹人煩厭的聲頻。房車上多個容易引起噪音及震盪的地方，均加設特製的隔音吸震物料，全面消滅風噪、路噪、引擎轉動的噪音及車外雜音。再配合流線形的車身及車底擾流器，風阻系數降至0.29的低水平，令 IS200 更舒適寧靜。

INTERIOR PLEASURES

- Roomy cabin through an efficient use of space
- Two tone genuine leather 3-spoke steering wheel *
- Aluminum sports pedal and stainless steel scuff plates on the door *
- 8-way multi-adjustable power driver seat
- Genuine / synthetic leather seats in noble seat shape *
- Chrome metallic shift lever and knob
- Seat heater for front seats *
- Chronograph-style single-eye speedometer



豪華車廂

- 空間運用得宜令車廂倍感寬敞舒適
- 雙色真皮3點式軚盤*
- 鋁合金腳踏及不銹鋼門邊腳踏板*
- 8種角度電動調校司機座椅
- 真皮配人造皮革桶型跑車座椅*
- 電鍍金屬排檔桿及把手
- 前座椅設發熱功能*
- 3指針式Chronograph多功能儀錶組合，行車資料一目了然

- Automatic climate control air-conditioner with dial-type controls and built-in air filter



- 自動恆溫冷暖氣系統配旋轉式按鈕；另內置空氣過濾系統

- 8-speaker audio system with radio, stereo cassette and centre-console 6-CD changer



- 8具原廠高級揚聲器，音響設備包括收音機、卡式錄音機、鐳射音響組合連內置中央儀錶板的6碟自動轉換器

- One-touch power windows and moonroof with jam detector

- 輕觸式全電動車窗及天窗，附設阻力探測器

- Power central door lock

- 電動中央門鎖

- Computer-controlled cruise control system*



- 電腦控制定速巡航系統*

- Theft deterrent system with self-powered siren, radiowave intrusion sensor and engine immobiliser

- 內置防盜系統，連警報器無線電波干擾感應及引擎鎖死裝置

- Remote control to operate security system, door locks and rear trunk and with car finder function



- 全能遙控器可操作防盜系統、門鎖、行李箱鎖及具尋找汽車位置功能

* Exclusive features for Premium and Sport versions
 ~ Exclusive features for Select and Premium versions

* Premium 版及 Sport 版專有設備
 ~ Select 版及 Premium 版專有設備



EXHILARATING PERFORMANCE

The new 2-litre inline 6-cylinder twin-cam 24-valve engine achieves a high level balance of high performance, low noise and low emissions. Superb responsive performance is enhanced by the use of VVT-i technology (Variable Valve Timing - intelligent). This advanced system continuously varies the opening and closing timing of the engine intake valve to ensure the optimum air-fuel mixture at all engine speeds.

The employment of DIS (Direct Ignition System) precisely controls ignition timing and the ACIS (Acoustic Control Induction System) controls the effective length of the air-intake manifold to enhance air intake efficiency



resulting in a more powerful output throughout the IS200 entire rpm range. ETCS-i (Electronic Throttle Control System - intelligent) adjusts the throttle valve relative to the accelerator opening, to ensure acceleration control and stable driving.

泉湧動力

IS200的2公升直6汽缸24氣閥高性能引擎，帶來前所未有的駕駛震撼。劃時代的嶄新 VVT-i 智慧型可變進氣活瓣開合時間控制系統，在引擎運轉時不斷改變進氣閥的開合時間，因而在任何引擎轉速下，空氣與汽油的混合比例均能達致最理想效果。利用這方法，便可將引擎的扭力輸出顯著提高，令加速更敏銳凌厲，同時由於燃油能更徹底地燃燒，因此耗油量及廢氣排放量能降至更低水平。

此外全新引擎採用了 ACIS 電子控制進氣流程系統控制進氣岐管的有效吸氣行程，再配合令點火時間更準確的 DIS 直接點火系統，便能使每一轉速內的引擎輸出大幅提高。ETCS-i 電子油門根據駕駛者的需要而控制油門的開合角度，令加速反應更敏銳更順暢。



SPRINT RESPONSE

Two options of transmission are available for IS200. The sheer power of the new 6-speed manual transmission brings real driving excitement. The close ratios gears enable you to execute smooth, swift gear changes, optimizing acceleration and your sense of pure control.

Alternatively, the ECT-iE (Electronically Controlled Transmission with intelligence and Efficiency) adopts a total engine-transmission control system. This 4-speed automatic transmission is equipped with "Flex Lock-up System" to enhance energy efficiency while realizing smooth driving especially in uphill / downhill conditions.

敏銳反應

IS200 共有兩種傳動模式供選擇。動力澎湃的 6 前速手波採用密比率傳動排檔，令轉檔更直接和暢順，加速時更具爆發力，充分發揮極高表現的性能。

此外亦有 4 前速自動排檔型號，其使用的 ECT-iE 智慧型高

效能電子控制傳動系統，為引擎及傳動系統提供綜合管理，既可增加轉檔過程的暢順度，亦可增強加速反應的靈敏度。配合先進的排檔鎖合系統，無論上山下斜均會因應不同的路面狀況而調節轉檔或鎖定在最合適的檔內，不但減低耗油量，更帶來無窮的駕駛樂趣。



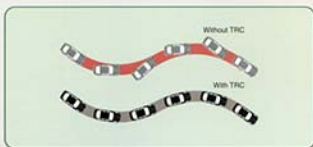
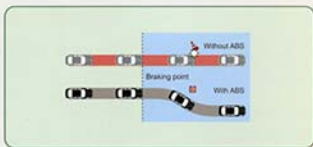


FULL MANEUVERABILITY

ABS (Anti-lock Braking System) and TRC (Traction Control System) help retain stability and control during braking and acceleration respectively. ABS and TRC are controlled by a central ECU (Electronic Control Unit) which constantly monitors and analyses the information from a variety of sensors to determine which control system to be activated in an emergency.

得心應手

ABS防鎖煞車系統和TRC循跡控制系統分別用於保持汽車在煞車和加速時的穩定操控性。兩組系統均由ECU中央電腦監控管理，遇有緊急情況時，能透過多組感應器所發放的信息而決定啟動ABS或TRC系統。



PRECISION HANDLING

- The FR (Front-engine, Rear-wheel-drive) layout enables an even longitudinal weight distribution to provide a better vehicle balance, and natural handling characteristics
- 4-wheel double wishbone suspension promotes a perfect balance of stability, control and ride comfort. On the Sport version, responsive sports suspension and TORSEN Limited Slip Differential are used to strengthen the sporty performance
- 4-wheel large disc brakes provide the best braking performance
- Reflective headlamps emit bright and wide distribution of light to ensure excellent visibility at night
- A wide rear-view mirror with aspherical portion to provide a larger rear vision field of view *
- Door mirrors automatically heated to keep them clear in foggy and cold weather. They feature titania-silica coating that helps spread rain drops on the mirror surface, to optimize driver visibility of the rear



* Exclusive features for Premium version

精確操控

- FR 前置引擎後輪驅動的設計，令車身前後重量分佈平均，行車更為穩定，操控更得心應手
- 四輪雙搖臂式懸掛系統，集行車穩定、操縱自如及乘坐舒適等優點於一身。Sport 版更配備跑車化懸掛系統及 TORSEN 限滑差速器，進一步加強操控反應及行車表現
- 四輪大型煞車碟提供更穩妥的制動力
- 投射式車頭燈有闊大的照射範圍和特高的亮度，令晚間行車視野更為清晰
- 新設計的加闊角度倒後鏡，能大幅度減低後視盲點*
- 門邊鏡具有發熱功能，在寒冷及大霧的環境仍保持清晰的視野；而鏡面的鈦矽表層更能把雨點擴散，使駕駛者的後方視野保持清晰

* Premium 版特有設備



THOUGHTFUL MEASURES

The IS200 is equipped with four safety airbags: two in the front and two on each side in the front. Airbags wire terminals are gold plated to protect against corrosion so as to ensure error-free deployment. The system is provided with a back-up capacitor to safeguard its power supply.

Side airbags are positioned in the back of the seats instead of the door trim to maintain maximum protection regardless of the seat position and angle.

設想周到

在 IS200 上共設有四個安全氣囊，分別位於前座兩席前方及兩側。安全氣囊的線路端子均鍍以純金，以防止銹蝕，確保保護工作萬無一失。此系統更附設後備電源，以備不時之需。

兩個側面安全氣囊被安放到前座椅背之內，而非在車門之內，因此乘客在隨意轉換座椅前後位置或傾斜角度的同時仍可獲得最全面的保障。



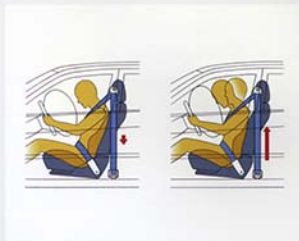
COMPREHENSIVE SAFETY

- The crash safety body is comprised of a high integrity cabin, with front and rear crumple zones that help to absorb impact energy in a collision
- WIL (Whiplash Injury Lessening) concept is used in front seats, helps to reduce injury to the vertebra, while the headrest is positioned forward to limit the backward movement of the head
- Brake pedal is pushed away from the driver, helping to maintain the driver's footwell space in a frontal collision
- 3-point seatbelts on all seats, including the centre seat in the rear
- Head impact protection structure in the front and centre pillars, roofside rail and doors



周全保障

- 以電腦工程技術設計的安全車身，能將撞擊力有效吸收和消散，並致力保持車廂的完整性，保護車內乘客安全
- 依據 WIL 乘客保護概念設計的前座座椅，能有效減低脊椎所承受的衝擊壓力，而前傾頭枕亦能保護頭部免受向後的衝力所傷
- 腳踏與駕駛人的距離特別加闊，當車頭承受強大衝擊力時，預留的空間便可減低駕駛者腳部受傷的機會
- 所有座位 (包括後座中央位置) 均配備三點式安全帶
- 車廂內的適當位置包括門邊、支柱及車廂內頂均設置軟墊，加強保護頭部



Seatbelt

Front seatbelts are equipped with pretensioners and force limiters. In emergency braking, pretensioners rewind the belts instantly to snugly restrain the seat occupants. When the seatbelt load reaches a set level, the force limiters begin to lengthen the belt to absorb the energy and reduce the load applied to the chest.

安全帶

前座安全帶為預索式，並附設拉力限制器。當緊急煞車時，預索裝置將安全帶收緊，避免乘客向前俯衝。而當安全帶拉緊的力度超過預定的程度時，拉力限制器自動將安全帶稍為放鬆，以舒緩拉力及減低乘客胸口所承受的壓力。



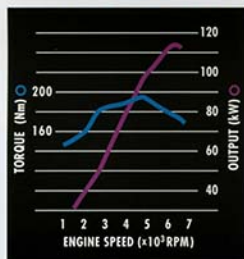
ENGINE 引擎

Model Name 車款	IS200 Select	IS200 Premium	IS200 Sport
Code 型號	1G-FE		
Type 類型	L6 Twin-Cam 24-valve L6 汽缸、雙凸輪軸、24 氣閥		
Displacement 容積	cc	1,988	
Bore and stroke 內徑及衝程	mm	75.0 x 75.0	
Fuel system 燃油系統	Electronic Fuel Injection (unleaded petrol) 電子燃油噴注 (無鉛汽油)		

PERFORMANCE CHART 性能資料表

Maximum output (SAE-net) 最大輸出	kW(PS)/rpm	114(155)/6,200	
Maximum torque (SAE-net) 最大扭力	Nm(kg-m)/rpm	195(20.4)/4,600	
Maximum speed 最高速度	km/h	215	
Acceleration 加速	0-100km/h(sec)	11.2	9.5
Compression ratio 壓縮比	to 1	10.0	
Coefficient of drag 風阻系數		0.28	0.29

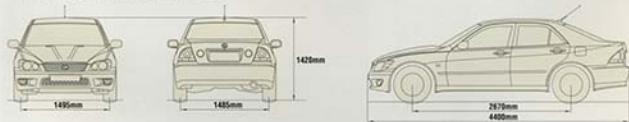
PERFORMANCE CURVE 性能曲線圖



SPECIFICATIONS 規格

Dimensions & Weight 度量				
		IS200 Select	IS200 Premium	IS200 Sport
Overall length 全長	mm	4,400		
Overall width 全闊	mm	1,720		
Overall height 全高	mm	1,420		
Wheelbase 輪距	mm	2,670		
Tread 跨距	Front 前輪	1,495		
	Rear 後輪	1,485		
Kerb weight 車輪淨重	kg	1,375-1,440		1,365-1,435
Seating capacity (including driver) 載客量 (連駕駛者)		5		
Luggage compartment capacity 行李箱容積	litre	400		
Fuel tank capacity 油缸容積	litre	70		
Chassis 車身				
Body type 車殼類別	Monocoque 原身鑄造			
Suspension 懸掛系統	4-wheel independent double-wishbone suspension with coil springs and stabilizer bars 四輪獨立雙搖臂式懸掛系統連吸震彈簧及防滾桿			
Brakes 制動系統	Front 前	296 mm ventilated discs with ABS 通風碟式連防鎖煞車系統		
	Rear 後	307 mm discs with ABS 實心碟式連防鎖煞車系統		
	Parking brake 手掣	Manual type 手動式		
Transmission 轉向系統	Type 類型	4-speed Automatic (ECT-iE) 四前速智慧型效能電子控制排檔	6-speed Manual 六前速手動排檔	
	Drive 驅動形式	Rear wheel 後輪驅動		
	Gear ratio 齒輪比	1 st :2.826, 2 nd :1.493, 3 rd :1.000, 4 th :0.730, Rev:2.703	1 st :3.874, 2 nd :2.175, 3 rd :1.484, 4 th :1.223, 5 th :1.000, 6 th :0.869, Rev:1.672	
	Differential gear ratio 差速齒輪比	4.100		
Emission 排氣系統	Exhaust emission control system with catalytic converter 廢氣排放控制系統連催化轉換器 Fully Comply with the Emission Standard of 96/69/EC 全面符合 96/69/EC 廢氣排放條例			
Steering 轉向系統	Type 類型	Rack and pinion, vehicle-speed-sensitive variable power assist 天梯牙式車速感應動力輔助轉向系統		
	Min. turning radius (tyres) 最小迴旋半徑 (以輪胎計) m	5.1		
Tyre & wheel 輪胎及輪圈		205/55R 16 Alloy 合金輪圈	215/45ZR 17 Alloy 合金輪圈	

* Details of specifications and equipment are subject to change without prior notice.
詳細規格或汽車配件可能會在未有事先通知下加以變更。



* Vehicles pictured in this catalogue may vary from models available in Hong Kong. Vehicle body colour might differ slightly from the printed photos in this catalogue.
本合頁圖所載之車輛圖片可能與香港出售之款式稍有不同，車身顏色與本合頁圖中之車輛顏色或許稍有差別。



Lexus customers can enjoy a tailor-made comprehensive vehicle insurance scheme backed by international reputable underwriters. Tel: 2511 9430
或至客戶可享有由來德信譽昭著之保險公司為您精心設計之全面汽車保險計劃。電話：2511 9400



Lexus Finance offers a wide range of financial services for both private and business customers. Tel: 2511 9430
或至財務為私人及公司客戶提供廣泛的汽車理財計劃。電話：2511 9400

CROWN MOTORS LTD.

Lexus Showroom : Shop B-D, National Mutual Centre, 151 Gloucester Road, Hong Kong. Tel • 2511 9430 Fax • 2507 2654

Macau Showroom : Yat Fung Motors Ltd. 68A-B Avenida Conselheiro Ferreira, de Almeida, Macau. Tel • (853) 561 668 Fax • (853) 592 984

皇冠汽車有限公司

凌志車系陳列室：香港灣仔告士打道 151 號國衛中心地下 B-D 電話 • 2511 9430 傳真 • 2507 2654

澳門陳列室：澳門荷蘭園大馬路 68 號 A-B 地下日豐車行 電話 • (853) 561 668 傳真 • (853) 592 984



Internet 網址 : www.crown-motors.com



The relentless pursuit of perfection.