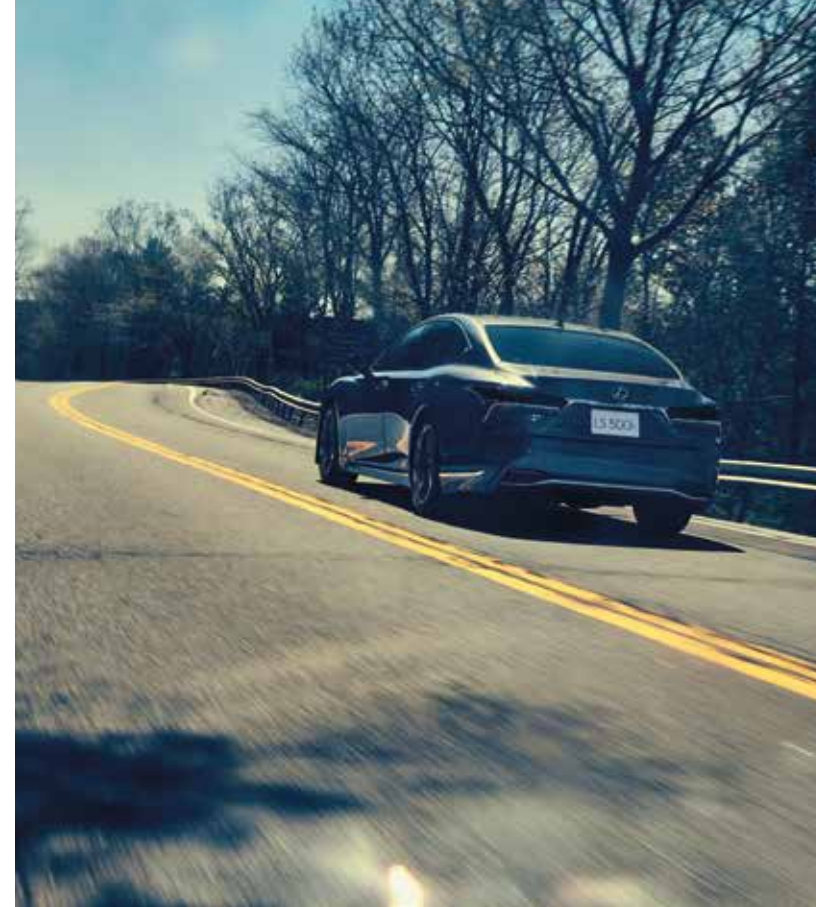


The image features a dark gray background with a complex geometric pattern of thin white lines. On the left side, there is a dense grid of triangles that tapers towards the center. On the right side, there are several horizontal, slightly wavy lines. In the upper right corner, the Lexus logo is displayed in white, consisting of the brand's emblem and the word "LEXUS" in a bold, sans-serif font. Below the logo, the slogan "EXPERIENCE AMAZING" is written in a smaller, all-caps sans-serif font.

 LEXUS
EXPERIENCE AMAZING

LS











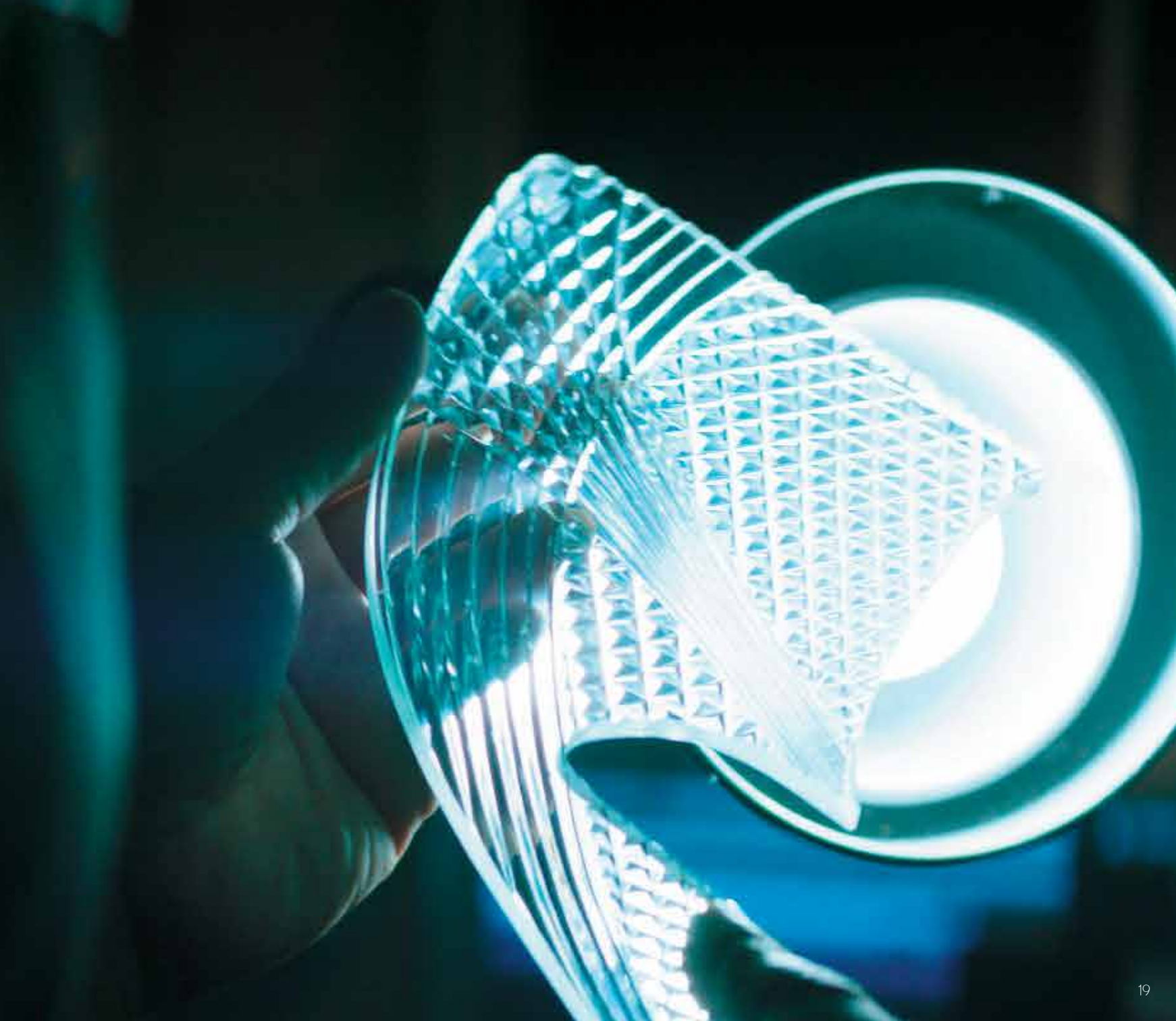


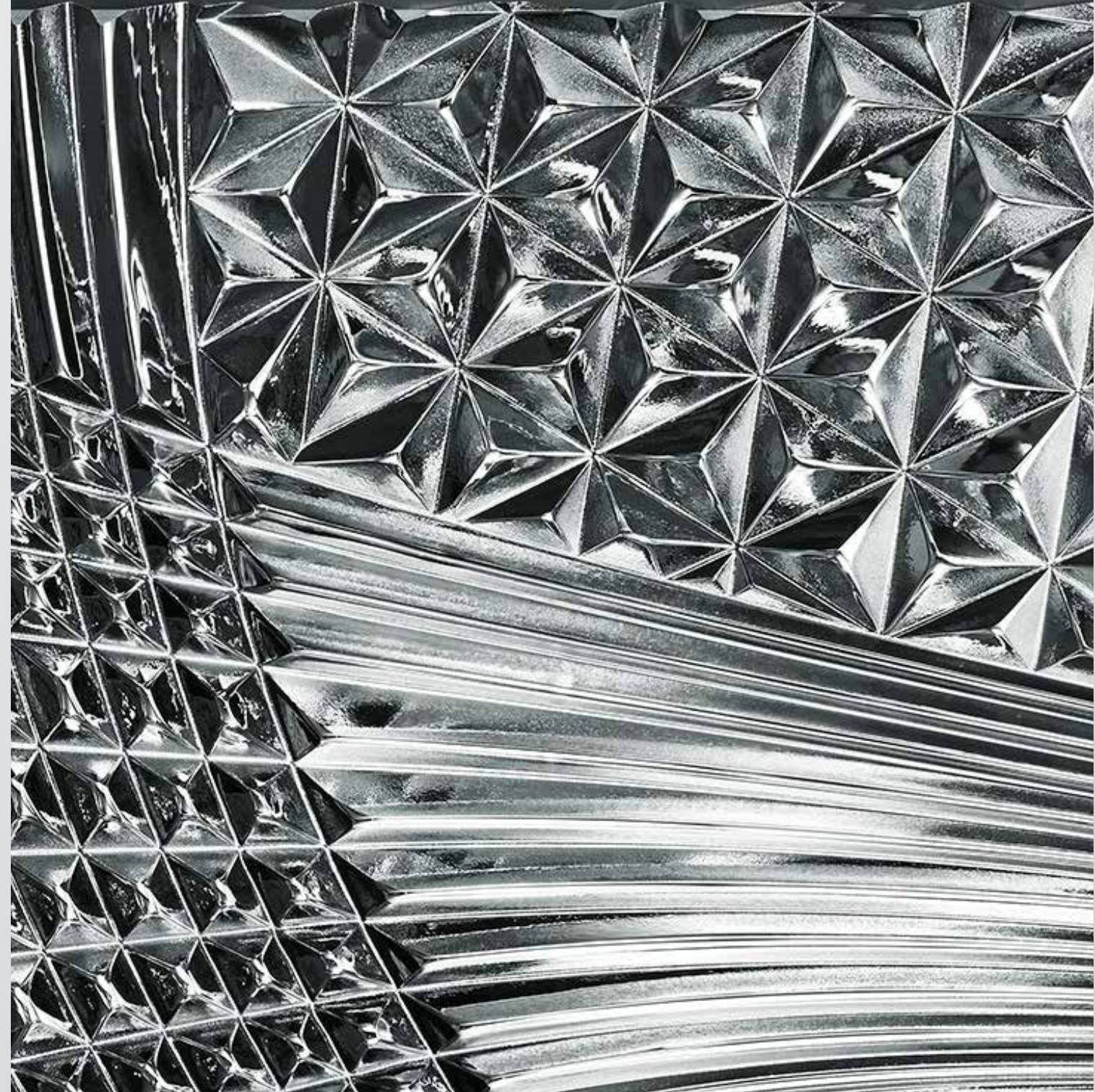




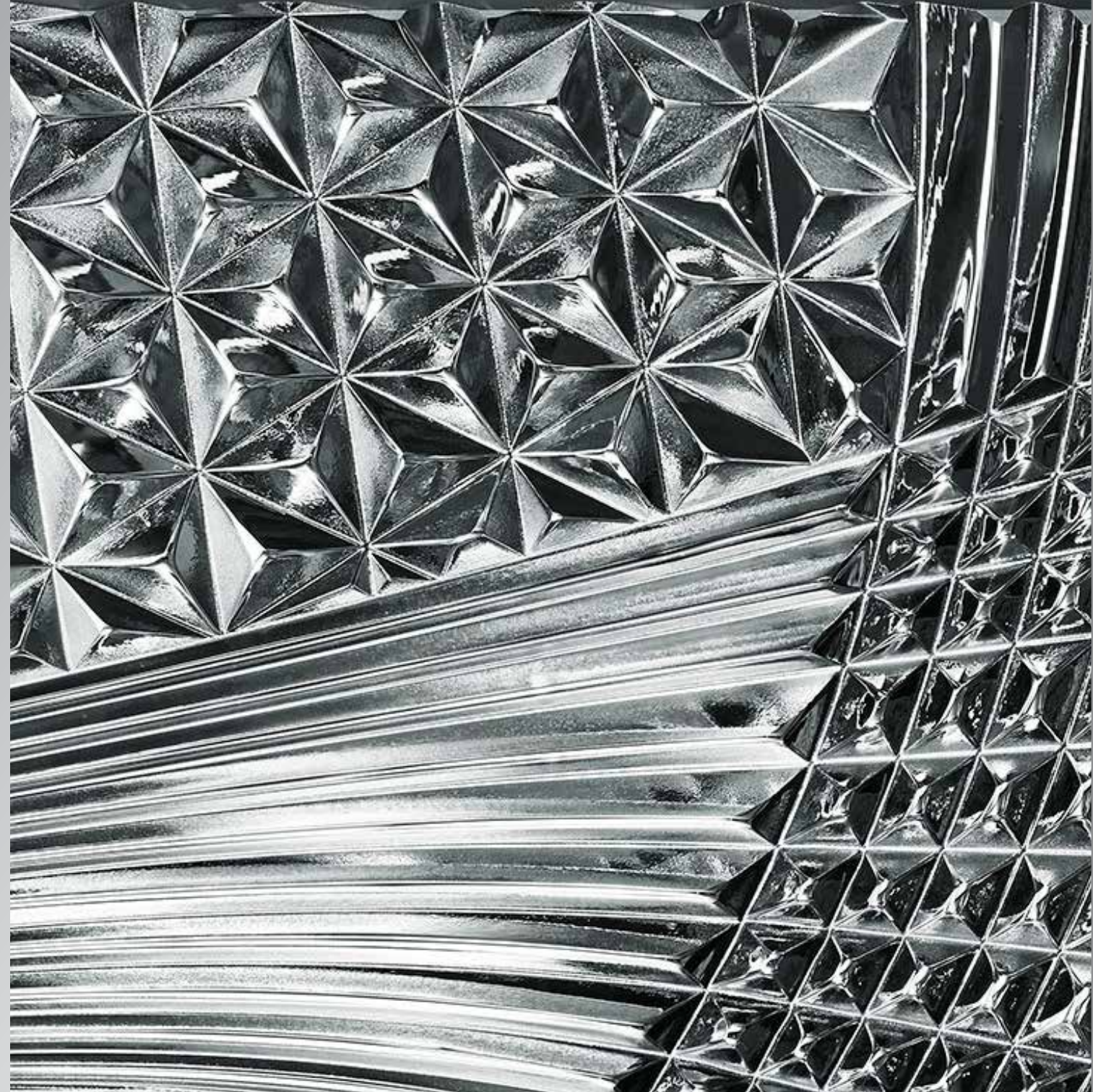
Takumi

Our Takumi craftsmen strive for perfection in every aspect of their work, actively seeking enhancements by applying constant care and dedication to their craftsmanship, blending their craftsmen's skills with the power of technology to better anticipate the future.















LEXUS

INTELLIGENCE

FIVE



1

CONCEPT



P30

2

DESIGN



P36

3

PERFORMANCE



P40

4

FEATURES



P46

5

SAFETY



P54

CONCEPT



The next-generation LS realizes the "Ultimate Experience of Visionary Anticipation", a uniquely creative and emotional experience made possible by Lexus vision designed to capture the hearts of the next wave of world leaders.



» INTELLIGENCE







For Lexus, creating a flagship sedan is about much more than making a luxury vehicle. It goes without saying that it must symbolize Lexus, but it must also define the luxury car of the future, crystallize Japanese culture, and serve as an exemplary car to the world that exceeds customers' imagination. To realize this, in developing the LS we focused on the fusion of its personality and

emotional appeal as a flagship sedan, with performance that delivers the pinnacle of elegance, comfort and environmental friendliness, and perceived qualities defined by unique Japanese Takumi craftsmanship and advanced production technologies. We invite you to experience the LS and the future of Lexus with all your five senses.



DESIGN



The flowing silhouette with its low center of gravity shapes a spacious and inviting interior. Its innovative beauty that fuses unique Japanese Takumi skills with state-of-the-art technologies and refined sensibilities will transform urban landscapes worldwide.



» INTELLIGENCE





EXTERIOR

Expressing the design concept "Sensual Aggressive", the exterior fuses sensual beauty with the low center of gravity of a refined platform to generate anticipation of dynamic driving performance, endowing a unique presence that delivers the style and personality befitting a flagship sedan.



INTERIOR

Designed around the concept "Progressive Comfort", the interior combines a cockpit for focused concentration on driving with exquisite relaxation befitting an exceptional luxury sedan. The highly refined features and finish that evoke the aesthetic beauty of Japanese crafts, imbue a unique interior that appeals to sophisticated sensibilities.





PERFORMANCE



Smooth, rhythmic acceleration in keeping with the driver's feelings. Instant understanding of the driver's intended line, as optimal control makes for pleasant cornering. Thoroughly refined driving characteristics and a precisely honed body realize exhilarating driving like you've never experienced before.



» INTELLIGENCE



<LS500> 3.5-liter V6 twin turbocharged engine (V35A-FTS)

Developed exclusively for Lexus, the core engine platform was redesigned and high-speed combustion technology and a high-efficiency turbocharger utilized to deliver exceptional power output together with outstanding fuel efficiency. The engine generates maximum torque starting at low rpms, providing powerful acceleration whenever the accelerator is depressed. Paired with the Direct Shift-10AT, the rhythmic shifting and direct response boost driving pleasure.

<LS350> 3.5-liter V6 engine (8GR-FKS)

Delivering a sophisticated blend of power and environment-friendly performance, Dual VVT-i contributes to high torque across the rpm range, with lightweight roller rocker arms and a low-friction timing chain enhancing high-revving performance. The Stop & Start System complements the D-4S fuel injection system to further enhance fuel efficiency.*



<LS500h> 3.5-liter V6 engine (8GR-FXS)

The hybrid system's V6 engine integrates advanced technologies that include Dual VVT-i and D-4S fuel injection system. Lightweight components further contribute to both powerful driving and outstanding environmental performance.



Multi Stage Hybrid System

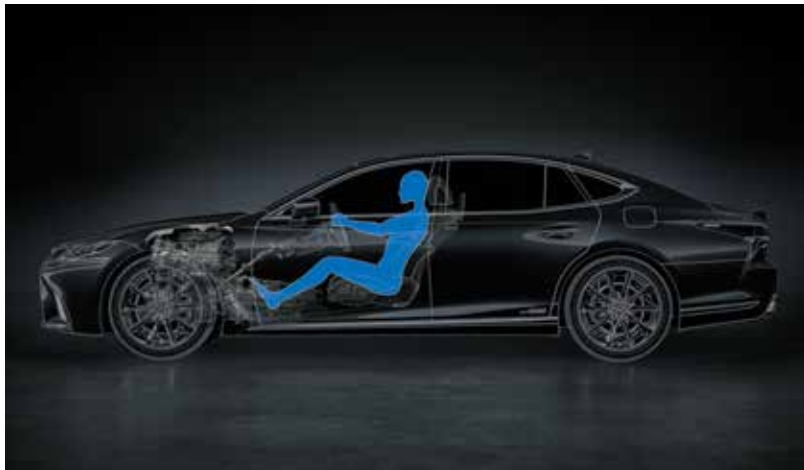
The Multi Stage Hybrid System's 10-speed shift control provides a direct acceleration feel that follows the increase in engine rpms, together with excellent shifting rhythm. The Multi Stage Shift Device varies the combined output of the engine and motor, amplifying engine torque and increasing

drive force by 24%. It utilizes engine speed in a wide range from low to high speeds, harnessing maximum engine output from 50km/h, as well as enabling high-speed driving at lower engine rpms for a quiet ride.



Multi material body

To achieve high body rigidity, light weight and excellent safety performance, required optimizing the layout and use of hot-stamp, high-tensile steel for major body components such as the rockers, pillars and roof. To lower the center of gravity and moment of inertia, aluminum was used for the body framework located further from the vehicle's center of gravity, hood, trunk lid, fenders, doors and suspension towers, endowing the body with excellent turning characteristics.



FR (Front engine, Rear wheel drive) platform

The LS takes advantage of the FR platform that Lexus refined for the LC to optimize front-to-rear weight distribution and the moment of inertia. The result is natural, smooth vehicle dynamics when cornering, accelerating and decelerating. The adoption of a low driving position and a layout that keeps the driver's hip point and the vehicle's center of gravity close together minimizes the distance between the driver and the axis of rotation, heightening the driver's feeling of oneness with the car. In this way, the packaging meticulously refines the inertia characteristics to deliver excellent response along with smooth, stable changes in posture during the sequence of movements involved in cornering.



Drive mode select

Drive mode select provides integrated control of multiple systems to let you tune performance to suit your driving style. You can select and change between five modes: Normal, Eco, Comfort, Sport S and Sport S+ Modes. In addition, Custom Mode enables drivers to set their preferred settings for the powertrain, chassis and air conditioning.



Suspension

The front suspension utilizes built-in shock absorbers to provide supple ride comfort. The development of a ball joint stud type cantilevered bushing for the rear suspension contributes to a sophisticated blend of handling stability and ride comfort.



FEATURES



The LS offers advanced utility and fulfilling comfort befitting Lexus's flagship sedan, to provide a superb mobility experience for driver and passengers alike.

» INTELLIGENCE





Together with its bold silhouette, the LED lamps symbolize the LS's flagship status. The narrow, slit-like 3-eye LED headlamps give the front face a powerful expression, which is heightened by the lasting impressions of the L-shaped LED rear combination lamps. The LS is designed so that through the actions of loading up your luggage, getting in and relaxing, you'll experience a heart-warming feeling of convenience as you are enveloped in comfort. In the cabin,

comfort-oriented functions provide exquisite relaxation, from the seats and air conditioning to the music and other entertainment features. Lexus hospitality has been carefully conceived down to the fine details to transform time spent in the LS into an exceptional experience.



Headlamps

The ultra-small 3-eye Bi-Beam LED headlamps combine advanced design with excellent light distribution. 16 LEDs in the sequential turn signal lamps illuminate sequentially in a flow from the inner side to the outside of the vehicle.



Rear combination lamps

All the rear combination lamps are LEDs, including the lamps on the trunk lid. The sequential turn signal lamps illuminate in a sharp, well-defined flow.



Door mirrors

Sculpting the inside of the mirror visor gives it a sharp shape, and creates more space between the mirror and front pillar, enhancing aerodynamic performance and reducing wind noise.



Hands-free power trunk lid

Even if both hands are full, when carrying the Electronic Key you can open and close the trunk lid automatically by moving your foot under the rear bumper.



Moonroof

An outer sliding mechanism slides the glass above the roof to create a spacious open feeling in the rear seats.



Trunk space

In hybrid models the battery is located behind the rear seats, creating 430 liters of luggage space (Gasoline models: 480 liters).*

* Luggage space calculated using the VDA method. Luggage space varies for vehicles equipped with a rear air conditioner. Photos for reference only.



22-way power left rear seat and power ottoman (Premium Grade only)

The power left rear seat use motors and a newly-developed pneumatic system that inflates and deflates air bladders to make fine-grained adjustments to every aspect of the seat. It has a maximum 1020mm of foot room and a power ottoman that provides generous support to the lower legs so the occupant can relax in refined comfort.

Rear seat entertainment system (Premium Grade only)

The rear seat entertainment system includes 11.6-inch displays that automatically adjust with the seat position to maintain an excellent angle for easy viewing, a Blu-ray™ Disc player, SD card slot, and a HDMI jack that enables the connection of a computer or other devices.



Rear refresh seats with warming function (Premium Grade only)

Air bladders integrated into the seat cushion and seatback are inflated to apply pressure to the occupant's back and thighs. The system also utilizes dedicated heaters to promote relaxation through repeated warming and cooling. A total of seven programs for both the entire body (Full Body Refresh, Full Body Stretch and Full Body Simple) and specific parts of the body (Upper Body, Lower Body, Shoulder and Lumbar) can be selected.



Photos for reference only.



Rear multi-operation panel

The multi-operation panel in the rear center armrest puts intuitive control of the audio, air-conditioning, seat and refresh functions*, sunshades and lighting at your fingertips.

*Premium Grade only

Mark Levinson® QLI Reference Surround Sound System

This newly-developed 16-channel 3D surround sound system drives 23 speakers. The 7 Unity speakers, ceiling speakers and QLI (Quantum Logic Immersion) surround technology fill the cabin with uniform sound quality, enveloping the listener in natural realistic sound with the precise positioning of a live sound stage, excellent separation and dynamic reproduction of sound sources.



Power sunshades (Rear doors, rear quarter windows and rear window)



The rear window sunshade covers the entire window on both sides with no gaps. Operation of the rear quarter window sunshades is linked with the rear door window sunshades to provide comfort and privacy in the rear seats.



Cool box (LS350 / LS500 only)

Air chilled by the rear cooler in the trunk space circulates through the cool box to keep items cool. Cool air vents allow the airflow to be switched on and off as required.



28-way power front seats

The newly-developed pneumatic system provides fine-grained support for every part of the body. Shoulder supports for the shoulder blades help steering operation. The upper body is also supported during cornering, enhancing the feeling of unity with the car. Hip support provides special support for the back of the hips, to help maintain posture during braking and cornering. Cushion side supports provide a high degree of grip, contributing to stable body hold during cornering.



Front refresh seats with warming function

Air bladders integrated into the seatback and seat cushion are inflated to apply pressure from the occupant's back to the thighs, contributing to a feeling of relaxation. Programs can be selected for the entire body as well as particular areas (Upper Body, Lower Body and Lumbar).



Remote Touch Interface

The Remote Touch Interface is designed for smartphone style operation. The cursor can be adjusted to stop following flick operation to suit the user's preferences. Pinch-in and pinch-out operation enables continuous in and out zooming.



Lexus Climate Concierge

Lexus Climate Concierge coordinates with the 4-zone independent temperature control to automatically control the auto air conditioner with the seat heaters and seat ventilation to provide optimal comfort for each occupant. The body surface temperature of occupants is detected by IR (Infra-red Rays) matrix sensors to quickly provide the optimal level of comfort for all occupants. It also detects sunlight in the early morning and at sunset and controls the vehicle's climate control system to maintain comfort.



Power easy access system

In addition to auto slide-away and return functions, the front seats feature auto lift-up function and cushion side-away functions (Driver's seat only). For easy access, auto lift-up raises the seat lifter when the driver gets out and then returns it to the original seat position when the driver gets in. Cushion side-away opens the outboard side cushion supports to reduce the pressure on the thighs while getting in and out.*2



Electronically controlled air suspension (With Access Mode)

In addition to the vehicle height adjustment function which can be switched between Normal and High settings, access mode automatically raises the vehicle to make ingress and egress easy.*1



Easy Access Buckles (Front seats)

To make the front seatbelts easy to use, the seatbelt buckle lifts up when the door is opened and then moves back down once the seatbelt is fastened.

*1 To use access mode or to operate the air suspension while stopped requires changing the function settings.
*2 To use auto-lift-up requires changing the easy access system settings.

SAFETY



The aggressive performance of the LS as a driver's sedan is underpinned by active and passive safety measures that utilize advanced technologies to deepen your peace of mind.



» INTELLIGENCE





Large color head-up display

The system helps the driver intuitively understand warnings and take action to avoid potential hazards with animations and information projected on the large 24-inch (600×150mm) display. The screen is divided into different areas to effectively bring information to the driver's attention including cautions and warnings, driving support, vehicle speed, navigation and other information.



Panoramic View Monitor

Video that provides the driver with an image of the vehicle as if viewed from above is displayed on the 12.3-inch EMV (Electro Multi-Vision) display. It helps the driver to check conditions around the vehicle that are difficult to see in real time.*¹

Side Clearance View: Helps the driver to check safe clearance to the side of the vehicle.

Cornering View: Helps the driver to check clearance when turning left or right on a narrow road. When the Side Clearance View is active, the Cornering View is automatically displayed in response to steering operation.*¹



Automatic rear seat reclining

When the rear seat is unoccupied, it automatically reclines in tandem with shift operation. If the headrest is raised, it also lowers to provide a wide field of view in the interior mirror.



SRS (Supplemental Restraint System) airbags

The LS features dual-stage SRS airbags (Front seats), SRS knee airbags (Front seats), SRS side airbags (Front and outboard rear seats) and SRS curtain shield airbags (Front and rear seats). SRS seat cushion airbags (Outboard rear seats) are also available for the power rear seats.*²

*¹ Pedestrians, obstacles and other objects may appear different when displayed on the screen. Be sure to visually check your surroundings before you proceed.

*² The SRS airbags are supplemental devices to be used with the seatbelts. The driver and all passengers in the vehicle must wear their seatbelts properly at all times. Never install a rear-facing CRS (Child Restraint System) on the front passenger's seat. For a forward-facing CRS, it is recommended you use it in the rear seats. Please do not use accessories for the seats which cover the parts where the SRS side airbags should inflate. Such accessories may prevent the SRS side airbags from activating correctly, causing serious injury (Lexus genuine seat covers are specifically designed for models equipped with the SRS side airbags. To find out about availability in your area, please inquire at your local dealer). The photo shows all the SRS airbags activated for display purposes only (the SRS side and curtain shield airbags only inflate on the side of the collision in an actual accident). For details on these and other important safety features, be sure to read the Owner's Manual carefully.

EXTERIOR & INTERIOR
COLORS

The LS's "Effect of Element" color design concept is expressed in a richly varied worldview that complements pleasing variations in the shape of the exterior and interior with elements such as colors, material textures, three-dimensional finishes and lighting. Enjoy the pinnacle of refinement made possible by a tapestry of colors and materials.



Sonic Quartz <085>



Sonic Silver <112>



Sonic Titanium <117>



Manganese Luster <1K2>



Black <212>



Graphite Black Glass Flake <223>



Red Mica Crystal Shine <3R1>



Sonic Agate <3U3>



Sleek Ecru Metallic <4U7>



Amber Crystal Shine <4X2>



Deep Blue Mica <8X5>



20-inch aluminum wheels
LS500h



20-inch aluminum wheels
LS350 / LS500

<SEMI-ANILINE LEATHER >



White



Crimson & Black/Black



Noble Brown



Ivory



Topaz Brown

<TRIM>



Walnut



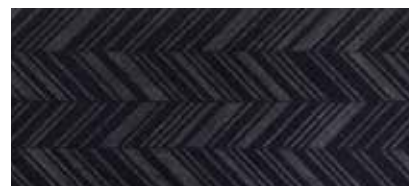
Walnut (Open Pore)



Shimamoku



Art Wood (Organic)



Art Wood (Herringbone)



Laser Cut Wood



Kiriko (Cut Glass)

Color might differ slightly from the printed photos in this brochure.

SEATING MATERIAL/INTERIOR COLORS

	SEATING MATERIAL/INTERIOR COLORS							
	Semi-aniline Leather (Premium Model)			Semi-aniline Leather (Executive model)				
	White	Black	Crimson & Black	White	Black	Ivory	Topaz Brown	Noble Brown
Walnut	●	—	—	●	—	●	—	—
Walnut (Open Pore)	—	—	—	—	—	—	●	—
Shimamoku	—	—	—	—	●	—	—	—
Art Wood (Organic)	●	●	—	—	—	—	—	—
Art Wood (Herringbone)	—	—	●	—	—	—	—	—
Laser Cut Wood	—	—	—	—	—	—	—	●
Kiriko (Cut Glass)	—	●	●	—	—	—	—	—

● : Available combination.

SPECIFICATIONS <LS500h/LS500/LS350>

DIMENSIONS & WEIGHT

Overall length:	5,235 mm
Overall width:	1,900 mm
Overall height:	1,450 mm
Wheelbase:	3,125 mm
Curb Weight	2,125-2,165 kg (LS350 Executive) 2,220-2,250 kg (LS500 Executive) 2,235-2,290 kg (LS500 Premium) 2,295-2,350 kg (LS500h Premium)



ENGINE <LS500h>

Type:	3.5-liter V6 Four Cam 24-valve (8 GR-FXS, unleaded)
Piston displacement:	3,456 cc
Max. output:	299 PS / 6,600 rpm
Max. torque:	350 Nm / 5,100 rpm

MOTOR

Type:	Permanent Magnet Motor
Max. output:	179 PS
Max. torque:	300 Nm
Total system output:	359 PS*

ENGINE <LS500>

Type:	3.5-liter V6 Four Cam 24-valve, twin turbocharger (V35A-FTS, unleaded)
Piston displacement:	3,445 cc
Max. output:	421 PS / 6,000 rpm
Max. torque:	600 Nm / 1,600-4,800 rpm

ENGINE <LS350>

Type:	3.5-liter V6 Four Cam 24-valve (8 GR-FKS, unleaded)
Piston displacement:	3,456 cc
Max. output:	315 PS / 6,600 rpm
Max. torque:	380 Nm / 4,800 rpm

*Total system output from the engine and electric motor (using the battery), based on in-house measurements.

HONG KONG FLAGSHIP SHOWROOM


G/F CENTRE PARC, 11 SHEUNG YUET ROAD, KOWLOON BAY, KOWLOON
TEL : 2820 4020

MACAU SHOWROOM

NO. 207-215, AV. DO DR. RODRIGO RODRIGUES, G/F BLOCK "C", NAM KWONG BUILDING, MACAU
TEL : (853) 2871 6655

HONG KONG SERVICE CENTRE

NORTH POINT TEL : 2880 1551 | KWAI CHUNG TEL : 2880 4900
CUSTOMER EXPERIENCE HOTLINE TEL : 2880 1395

 Lexus Hong Kong

 Lexushongkong

 www.lexus.com.hk

