

UX

UX

UX250h / UX200 / F-SPORT



 **LEXUS**
EXPERIENCE AMAZING

DISCOVER NEW HORIZONS

Who knows what the open road will bring?
With so much to discover, let the Lexus UX
take you there.



Exciting spaces.
Inspired experiences.
Brand new adventures.

What will you find?





Discover a fresh
and bold perspective
to your city.



Where craftsmanship
meets the city.





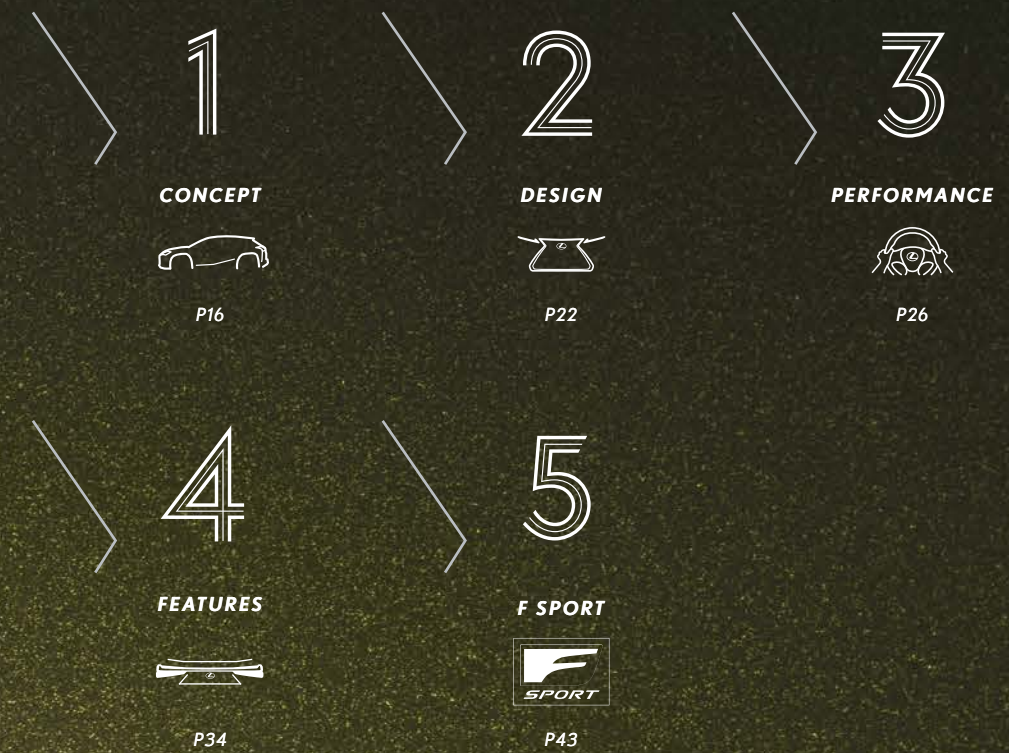
LEXUS

INTELLIGENCE

FIVE

“ Our aim for the new UX was not to conform to the established crossover look, but to break with convention and create something more distinctive and dynamic. ”

UX CHIEF ENGINEER



CONCEPT



Urban Explorer.

A bold evolution of the Lexus L-finesse philosophy, the UX was conceived as a new genre crossover SUV, a synthesis of dynamic performance, security and sophisticated playfulness that proactively embraces new discoveries, new experiences.



» INTELLIGENCE







Expressively crafted for the Urban Explorer, the UX is a free-spirited urban crossover which stands out by being boldly crafted inside and out. Offering the widest field of vision in its class, the interior of the UX is inspired by traditional Japanese architecture, 'engawa' which harmonizes the boundary between the inside and outside of a house, showcasing seamless continuity. Simple yet captivating, the exterior projects strength and dynamism. Integrating innovations like the distinctive aero stabilizing blade lights with integrated rear combination lamps that fuse exceptional functionality with sophisticated design, its presence and sense of playfulness catch the eye in an urban environment. The driver-oriented interior blends ergonomics with design to create a refined space that is securely snug, yet open and inviting.

The UX's functionality extends to the blend of elegant performance with peace of mind. Based on the advanced Lexus GA-C platform, its outstanding rigidity and low center of gravity provide the foundation for dynamic performance. Together with an engine that delivers exciting driving with exceptional fuel economy, refined suspension and innovative aerodynamics, the UX realizes agile exhilarating performance. In the cabin, it is expressed in the imaginative technology and advanced features that surprise and delight, including wireless vent control illumination and advanced active safety technologies that enhance peace of mind.





DESIGN



Distinctively designed for the Urban Explorer, the eye-catching styling with bold design exudes a futuristic presence. The seamless integration of both exterior and interior creates a feeling of spacious unity, designed for a heightened experience of pleasure and satisfaction.



» INTELLIGENCE





EXTERIOR

Bolder and more dynamic, the exterior flows from the distinctive Lexus signature grille into the three-dimensional forms of the fenders flaring out from the cabin centre, expressing a powerful driving performance with a sleek-yet-bold aerodynamic design.



INTERIOR

The human-centered interior blends ergonomics with design in the cockpit that provides a secure feeling whilst providing an artistic design. Interior trims inspired by the grain pattern of Japanese hand-made paper known as 'washi', help create a mood of calm and warmth. The theme continues with 'sashiko quilting', a technique used to strengthen the durability of the material, whilst maintaining its comfort.





PERFORMANCE

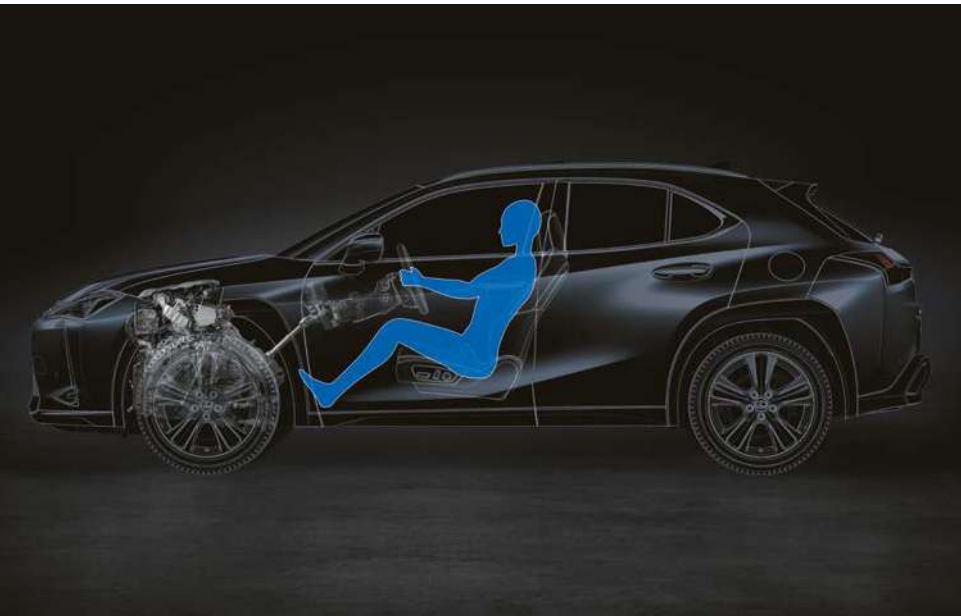


A dynamic expression of the Lexus performance philosophy, the advanced platform, low centre-of-gravity and advanced aerodynamics all come together for a more refined and stable ride.



» INTELLIGENCE





GA-C (Global Architecture-C) platform

The advanced Lexus GA-C platform forms the backbone of the UX, providing the foundation for the core elements of its dynamic performance: accelerating, cornering and braking. Combining excellent rigidity and a low center of gravity, it endows the UX with the sharp response and maneuverability of a passenger car enjoyed in the exceptional linear stability, fast stable cornering, and pleasing acceleration, together with excellent ride comfort and the security of peace of mind.

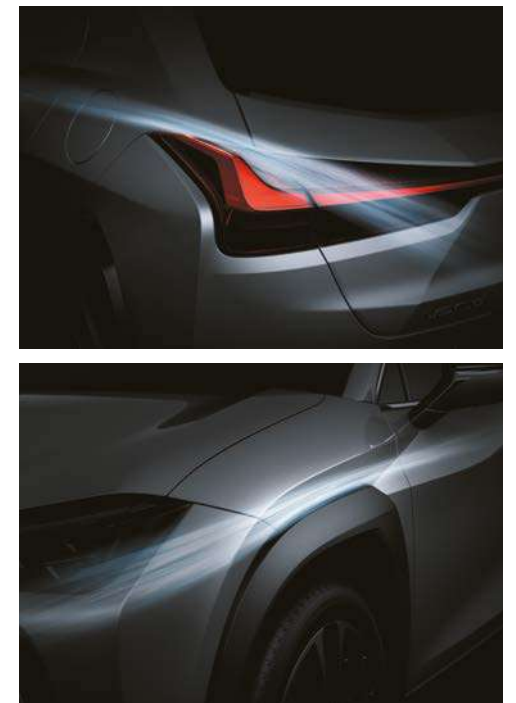
Multi material body

To create a strong yet light body, hot-stamp and high-tensile steel were used in key body components including the underbody, together with aluminum for the hood and side doors, and resin for the back door. Reinforcements around the outer side and back doors that connect the squared reinforced annular structures and the extensive use of technologies including laser screw welding and structural body adhesive further enhance rigidity, contributing to agile handling and excellent steering response and feedback.



Aerodynamics

In the pursuit of outstanding aerodynamic performance, the UX combines bold design with advanced aerodynamic performance. It drove developments in aerodynamics including the innovative aero stabilizing arch moldings, and aero stabilizing blade lights with integrated rear combination lamps. Blending form with function, the front and rear fenders feature aero stabilizing arch moldings with a distinctive rounded front section, squared rear section and flat upper surface that help to suppress unstable vehicle behavior, enhancing roll stability while cornering. The eye-catching aero stabilizing blade lights feature vertical fins on the outer edges which smooth airflow over the back surface, contributing to excellent rear stability while cornering, as well as enhancing stability in high speed driving in side winds. In addition, aerodynamic enhancements to the upper body include the shape of the front pillar and a wing type rear spoiler, and to the flat underbody structure that accelerates air flow under the vehicle.





2.0-liter 4-cylinder engine (M20A-FKS)

The advanced 2.0-liter inline 4-cylinder engine generates a sophisticated blend of powerful performance with exceptional fuel efficiency and environmental friendliness. The engine's basic design was refined to boost thermal efficiency and power output while reducing both weight and size. It utilizes high-speed combustion technology featuring a long stroke, high-efficiency intake and exhaust ports, and multi-hole direct injectors. Additional refinements including a continuously variable-capacity oil pump, a variable cooling system, and VVT-iE on the intake-side valves, contribute to the exceptional performance and fuel efficiency.*

Direct Shift-CVT

The Direct Shift-CVT delivers the smooth and fuel-efficient driving of a conventional CVT, with a direct and strong launch acceleration feel using an additional launch gear. A wide gear ratio range and linear acceleration feeling contribute to driving pleasure, achieved by synchronizing the engine speed and vehicle speed with the driver's operation. In conjunction with drive mode control, it realizes responsive performance to suit various driving styles, from smooth driving with excellent fuel economy to sporty driving with fast shifting.



Hybrid System

The Hybrid System was developed to deliver outstanding fuel economy together with linear acceleration for an exhilarating driving feel that enhances the driving pleasure of a Lexus hybrid crossover. The combination of a highly-responsive engine, efficient hybrid control system and enhanced battery performance provides exhilarating driving with high-speed responsiveness and a feeling of smooth, natural acceleration, so the UX250h moves in tune with the driver's expectations.

Key to the Hybrid System's development was a focus on creating compact lightweight components to fulfill the promise of economical yet exhilarating driving. The brain of the Lexus Hybrid Drive, the power control unit optimizes control of DC electricity from the battery and AC electricity for driving the motor and generator. The Ni-MH battery optimizes the battery layout and adopts a compact cooling system to enable the ample luggage space, as well as helping to optimize the low center of gravity.

2.0-liter 4-cylinder engine (M20A-FXS)

The advanced 2.0-liter inline 4-cylinder engine utilizes high-speed combustion technology to deliver powerful performance together with exceptional fuel efficiency and environmental friendliness. The amount of motor assist and engine rpm were optimized to deliver a linear acceleration feeling, with the engine speed synchronized with increasing vehicle speed to deliver an immediate and continuous acceleration feeling.



* VVT-iE: Variable Valve Timing-intelligent by Electric motor.



EPS (Electric Power Steering)

Featuring a compact and highly rigid format, the column assist-type EPS delivers the sharp response expected of a Lexus. Adopting a large column shaft enhanced torsional rigidity, boosting both steering response and easy operation, contributing to responsive handling that instantly and crisply responds to driver inputs with a smooth and sure steering feel.



Suspension

The MacPherson strut front suspension and double-wishbone rear suspension deliver excellent steering response together with premium ride comfort. They were fine-tuned specifically for the UX in keeping with the 'clear and deep feel' performance philosophy, and driven hard in testing on a race circuit to deliver reliable response and handling even at the limits. Careful attention paid to the shock absorbers, including refining the damper oil, oil seals and FCD (Friction Control Device), also enhance the ability to absorb vibrations transmitted from the road surface to provide a flat, comfortable ride.

Drive mode select

Drive mode select provides integrated control of multiple systems including the engine and CVT to let you tune performance to suit your driving style. You can select and change between three modes: Eco for fuel efficient driving; Normal for balanced driving performance with fuel efficiency; and Sport for sporty driving with enhanced steering feel and acceleration response.



Brakes

Engineered for excellent braking force, control and response, the brakes provide intuitive response to the driver's input, feeding driving pleasure by supporting exciting driving with peace of mind.



FEATURES



The integration of visionary technology gives expression to the UX's unique, future-focused identity. With the sharpest turning radius in its class enhanced with aerodynamic stabilizers, you can be ready to command any bump or turn that life springs at you.



» INTELLIGENCE





Imaginative technology

From the design of the exterior of its iconic spindle grille through to the innovative aero stabilizing blade lights, every feature blends inspired form with thoughtful function.



3-eye Bi-Beam LED headlamps*

The ultra-compact 3-eye Bi-Beam LED headlamps combine a beautiful distinctive design with exceptional light distribution. The Lexus signature L-shaped DRL (Daytime Running Lamps) set above the headlamps feature distinctive vertical illumination lines that enhance the feeling of depth.

LED rear combination lamps

The bold design of the rear combination lamps reinforces the UX's unique identity. The left and right lamps are connected by the aero stabilizing blade lights to form a single line of light across the rear, illuminated by 120 LEDs. This form is complemented by the advanced aerodynamics of the L-shaped race car-inspired fins, which contribute to excellent rear stability while cornering and in side winds.



Forward visibility

A key focus of the human-centered design was forward visibility, with the aim of providing a commanding view and peace of mind. Special attention was given to the design of the front pillars and door mirror area, creating a space between the pillar and mirror to enhance the visibility of pedestrians and bicycles at intersections.

Moonroof

The forward placement of the moonroof lets in an abundance of light, enhancing the open and airy feeling in the cabin. Its structure and shape were refined to help reduce wind noise when it is open.



Power back door*

Even if both hands are full, when carrying the Electronic Key you can open and close the back door automatically by moving your foot under the rear bumper and out again.

Rear bumper

Combining high rigidity with excellent recyclability, the rear bumper accentuates the dynamic SUV presence of the rear design, endowing it with a strong sense of stability. Back-up lamps are integrated into the lower section.



* Available for UX200 Ultimate / UX200 F SPORT and UX250h Ultimate.

Photos for reference only. Lexus Hong Kong reserves the right to alter any details of specifications and equipment without notice.



Meters/EMV display

Realizing the 'Seat in Control' concept of the human-centered interior, the displays are designed to provide the driver with an intuitive interface that provides clear information without changing posture or line of sight. The 10.3-inch EMV (Electro Multi-Vision) displays incoming hands-free mobile calls, audio system and other information, and coordinates the display of select information with the multi-information display integrated into the 7-inch color TFT (Thin Film Transistor) Optitron meter, and the large color head-up display positioned in the driver's line of sight. The drive mode select switch is conveniently located on the meter hood bezel.

Color head-up display*1

The wide, color head-up display projects a range of frequently checked information on the lower windshield glass in the driver's line of sight, including the current speed, tachometer, audio system, and more.



Air conditioning vent knob*2

An imaginative approach to technology drove the development of a single easy-to-use air conditioning vent knob that controls both air direction and volume. The integration of wireless LED lighting into the knob makes it easy to use at night, and projects a futuristic sophistication with its sense of depth.

Remote Touch Interface

The interface is designed for smartphone-style operation. A smooth touch pad surface allows the finger to easily slide over, while the cursor can be adjusted to suit the user's preferences. Pinch-in and pinch-out operation enables continuous in and out zooming.

Audio switches

Blending sophisticated design with ease of use, remote switches to control the audio system are integrated into the base of the palm rest. The layout and number of switches are arranged for intuitive control of frequently-used functions by the hand resting on the palm rest, without changing posture or line of sight.



*1 Available for UX200 F SPORT and UX250h Ultimate. *2 Available for UX200 Ultimate and UX250h Ultimate.

Photos for reference only. Lexus Hong Kong reserves the right to alter any details of specifications and equipment without notice.



Console box

The lid on the large capacity console box opens to both the left and right, for easy access by the driver and front seat passenger. The length of the armrest is optimized to provide comfort and support, with controls for the frequently-used audio system functions integrated into the front palm rest.



USB ports / Mini-jack / Power outlet

Two USB ports and a mini-jack integrated inside the center console box support the plug-and-play use of music players, and enable the connection and charging of various devices and portable gear. Additional power outlets are located in the front tray and the side of the luggage space, and two USB ports in the rear of the center console.

Mark Levinson Premium Surround Sound System*

Developed specifically for the UX to deliver audio purity, power and precision, the 13-speaker system includes 5 Unity speakers with identical performance arranged along the shoulder line. The ample power of the 8-channel amplifier delivers pure, clean audio signals to the speakers. QLS (Quantum Logic Surround) and Clari-Fi optimize acoustic tuning in the cabin to faithfully reproduce the original sound sources.



Lexus Climate Concierge

The Lexus Climate Concierge realizes a human-centered approach to personalized comfort. It automatically controls the cabin temperature, including individual temperature controls and the Ventilated Seats for the front seats to optimize the comfort of each occupant. It also provides one-touch control of all heating systems in the cabin.

Rear armrest

A thoughtful strap makes it easy to fold out the armrest in the center of the rear seats to provide added comfort and support. It also holds two convenient cupholders integrated in front.



Luggage space

Supporting an active lifestyle, the ample luggage space highlights the practical convenience of the packaging and thoughtful design. For longer items and larger loads, the 60/40 split rear seatbacks fold down to create various passenger and luggage configurations.

* Available for UX200 F SPORT and UX250h Ultimate.

Photos for reference only. Lexus Hong Kong reserves the right to alter any details of specifications and equipment without notice.



F SPORT



F SPORT evolves the Lexus sport DNA that finds its ultimate expression in the LFA supercar, to enable more drivers to experience its exciting performance and unique personality. The integration of exclusive F SPORT refinements and sports tuning give drivers a feeling of unity with the road, as well as the thrill of sports driving.



» INTELLIGENCE



Building on the secure powerful presence of the UX, the F SPORT pursues a low, wide form that evokes sports performance at a glance. It integrates exclusive F SPORT design features that include the mesh radiator grille, front and rear lower bumper garnish, 18-inch aluminum wheels and select exterior colors. The sporty feeling is amplified in

the driver's cockpit with its exclusive sports seats, TFT meters, clock, steering wheel with paddle shifters, shift knob and pedals, and realized in the exhilarating performance of the specially-tuned suspension, AVS, performance dampers and Active Sound Control.



A_Front mesh grille / B_Front bumper / C_Aluminum wheels / D_Front fender emblems



E_Jet black plating / F_Rear bumper

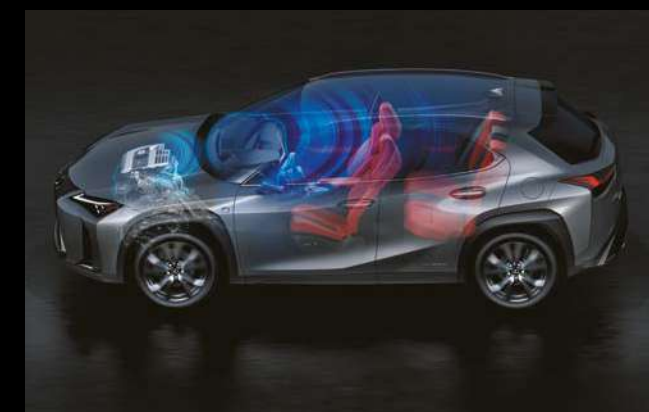
Performance dampers

The rear performance dampers quickly absorb body flex and vibrations from the road while driving to heighten handling stability and smooth ride comfort. Together with the front performance rod they enhance straight line driving stability for accurate, stable handling and outstanding comfort in normal driving, and dynamic performance and stability in high-speed driving.



AVS (Adaptive Variable Suspension system)

AVS optimally controls the damping force of the shock absorbers on all four wheels in response to driver input and road surface conditions, contributing to excellent ride comfort and handling.



ASC (Active Sound Control)

ASC enhances the engine sound, recreating upshifting and downshifting sensations that evoke a geared automatic transmission to provide audible feedback of the vehicle's response to driver operation, enhancing the feeling of unity between the driver and car, and the exhilaration of F SPORT performance.



A_Meters & multi-information display / B_Steering wheel / C_Aluminum pedals / D_Shift lever knob / E_Clock

F SPORT front seats

The exclusive sports seats evoke the sharp design of the LC's sports seats. An 'integrated foaming' structure contributes to the excellent fit and holding performance. Optimized for the F SPORT, these seats combine outstanding comfort with excellent support for the body during sports driving.



F SPORT meter

Evolved from the LFA supercar, the advanced interface of the F SPORT's sliding meter ring uses motion graphics that combine beautiful design with excellent visibility to display a range of functions that instantly communicate important information according to its priority.

F SPORT multi-information display

The meter ring on the large TFT (Thin Film Transistor) color multi-information display slides to the side at a touch of a switch on the steering wheel.



Drive mode select

Conveniently located on the meter bezel, the drive mode select switch lets the driver select the performance mode to suit their mood and driving style, with the choice of Eco, Normal, and Sport S/S+ Modes. In addition, Custom Mode enables customization of settings for the powertrain, AVS, EPS and air conditioning.

EXTERIOR & INTERIOR

COLORS

The concept behind the captivating colors for the UX is 'Toughness yet Luxury,' expressing the toughness of a crossover and the luxury of Lexus-style textures. A fresh and contemporary palette of exterior and interior colors is complemented by the unique textures and premium quality of the upholstery and trim.



White Nova Glass Flake <083>*1



Sonic Quartz <085>*2



Mercury Gray Mica <1H9>



Platinum Silver Metallic <1J4>



Sonic Titanium <1J7>



Black <212>



Graphite Black Glass Flake <223>



Madder Red <3T2>



Amber Crystal Shine <4X2>*2



Blazing Carnelian Contrast Layering <4Y1>



Heat Blue Contrast Layering <8X1>*1



Celestial Blue Glass Flake <8Y6>

WHEELS



Superior / Ultimate
18-inch Aluminum Wheels



F-Sport Exclusive
18-inch Aluminum Wheels

*1 Available on F SPORT package only. **2 Not available on F SPORT package.

Photos for reference only. Lexus Hong Kong reserves the right to alter any details of specifications and equipment without notice.

<SMOOTH LEATHER> UX200 Ultimate / UX250h Ultimate



Ocher



Cobalt



Black



White Ash

<SYNTHETIC LEATHER> UX200 Superior



Cobalt



Ocher



Black



White Ash

<SMOOTH LEATHER> F-Sport Exclusive



Flare Red

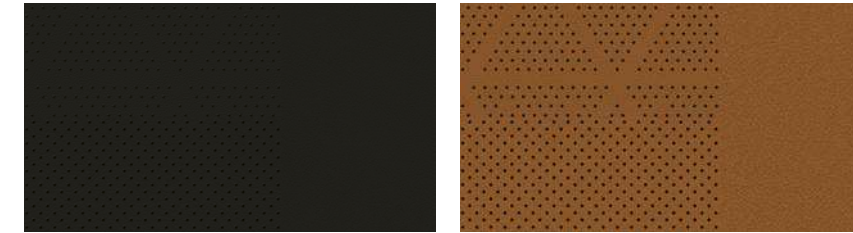


Black



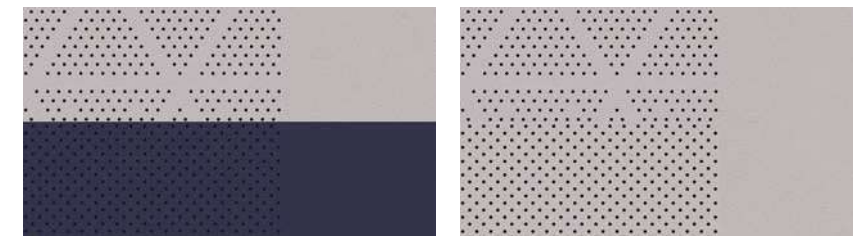
White

<SMOOTH LEATHER> UX200 Ultimate / UX250h Ultimate



Black

Ocher



Cobalt

White Ash

<SYNTHETIC LEATHER> UX200 Superior



Black

Ocher



Cobalt

White Ash

<SMOOTH LEATHER> F-Sport Exclusive



Black

White

Flare Red

SPECIFICATIONS <UX200 / UX250h>

DIMENSIONS & WEIGHT

Overall length :	4,495 mm
Overall width :	1,840 mm
Overall height :	1,520 mm
Wheelbase :	2,640 mm
Curb weight :	1,485 - 1,540 kg <UX200>, 1,570 - 1,625 kg <UX250h>

ENGINE <UX200>

Type :	4-cylinder, Inline type Dual VVT-i
Piston displacement :	1,987 cc
Max. output :	173 ps / 6,600 rpm
Max. torque :	204 Nm / 4,400 - 4,800 rpm

ENGINE <UX250h>

Type :	4-cylinder, Inline type Dual VVT-i
Piston displacement :	1,987 cc
Max. output :	145 ps / 6,000 rpm
Max. torque :	188 Nm / 4,400 - 5,200 rpm

MOTOR <UX250h>

Type :	Permanent magnet motor
Max. output :	109 ps
Max. torque :	202 Nm
Total system output :	184 ps

* Total system output from the engine and electric motor (using the battery), based on in-house measurements.

<TRIM> UX200 Superior / Ultimate



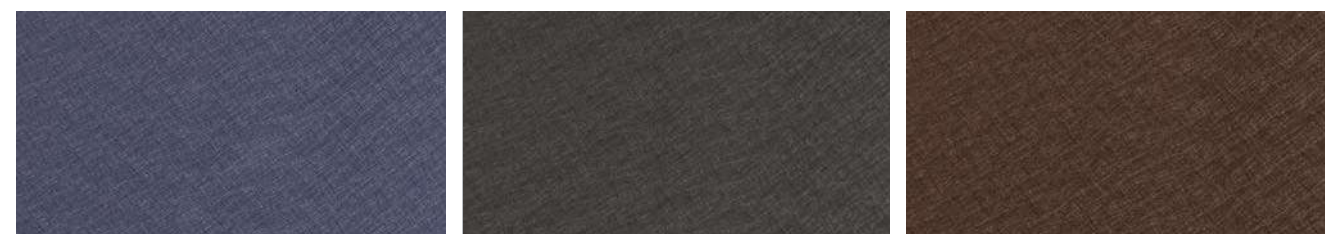
High feel / Blue

High feel / Black

High feel / Noble Brown



<TRIM> UX250h Ultimate



Washi (Japanese paper grain) / Blue

Washi (Japanese paper grain) / Black

Washi (Japanese paper grain) / Noble Brown





HONG KONG FLAGSHIP SHOWROOM

G/F CENTRE PARC, 11 SHEUNG YUET ROAD, KOWLOON BAY, KOWLOON
TEL : 2820 4020


MACAU SHOWROOM

NO. 207-215, AV. DO DR.RODRIGO RODRIGUES, G/F BLOCK "C", NAM KWONG BUILDING, MACAU
TEL : (853) 2871 6655

HONG KONG SERVICE CENTRE

NORTH POINT TEL : 2880 1551 | KWAI CHUNG TEL : 2880 4900
CUSTOMER EXPERIENCE HOTLINE TEL : 2880 1395

 Lexus Hong Kong

 Lexushongkong

 www.lexus.com.hk

