



Mazda CX-5
IPM



/ Full Airbag /

車廂附設整套安全氣袋(前置、前側、窗簾式)，作為對抗撞擊震盪和受傷的另一重深層保護。

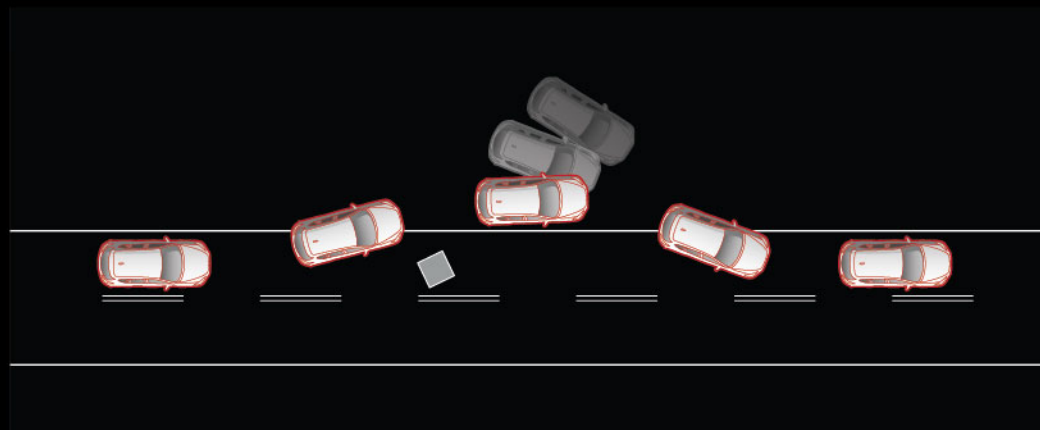
A full complement of airbags - front, front seat side, curtain to provide another layer of protection in depth against physical shock and injury in a collision.



/ Ultra-high-tensile Steel /

廣泛應用高拉力鋼，輕巧之餘，為車廂帶來堅固保護，強化車架又可承受和疏導撞擊力。

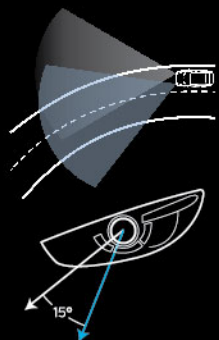
Extensive use of ultra-high-tensile steel gives strength with low weight, while the framework absorbs and channels energy away from the cabin.



/ DSC + TCS /

在路上遇到突如其來的障礙物，怎麼辦？DSC 系統會隨即啟動，向彎內側車尾輪施加制動力緩減「轉向不足」的情況（若出現「轉向過多」系統則向車頭彎外側車輪施加制動力）。循跡控制系統（TCS）亦會降低扭力輸出來減少輪呔打滑。輕鬆繞過危機，操控大權時刻在你手。

What if an unexpected hazard suddenly arises? DSC acts instantly, braking the inner rear wheel to offset understeer (or outer front wheel to combat oversteer). The Traction Control System (TCS) also reduces torque to the driven wheels to minimise skidding. The hazard can be steered around, as control is maintained.



/ Adaptive Front-lighting System (AFS) /

根據轉盤角度和車速，主動轉向式頭燈能預測前路狀況，引導頭燈光線至正確行駛方向，照亮將會切實途經之道路。

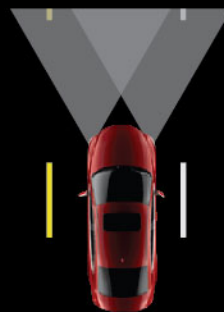
Taking inputs from the steering angle and vehicle speed, AFS predicts the shape of the road and directs the headlamps' beams in the direction of travel, illuminating the path that will actually follow.



/ LED Headlamp /

新加入的 LED 頭燈及日間行車燈讓駕駛者在任何路面情況下，獲得更光亮的照明及最佳的能見度。

The newly adopted LED headlights and Daytime Running Lamp helps to provide enhanced illumination and better visibility for the driver in any road conditions.



/ Auto on/off Headlights & Rain Sensor /

自動開關頭燈及雨點感應水撥增強夜間的照明及雨中能見度。

Auto on/off headlights & rain sensor to provide enhanced nighttime illumination & visibility in rain.



/ New-generation AWD System /

CX-5 的全自動電子調控四驅系統 (AWD) 包含主動扭力分佈設計，可由前驅模式 (100:0) 至四驅模式 (50:50) 之間暢順轉換前、後扭力分佈。系統會因應不同天氣和路況把動力分配到適當的車輪，確保行車安全。

CX-5's all-wheel-drive (AWD) system features an active torque control coupling that delivers linear control of front / rear torque distribution from 100:0 to 50:50.

In all weather conditions, drive power is always distributed to the appropriate wheels.



/ Electrical Parking Brake (EPB) /

新加入的電子泊車手掣讓駕駛者只需在中控台上的按鍵輕鬆一按或一拉，便可操作手掣的開關。

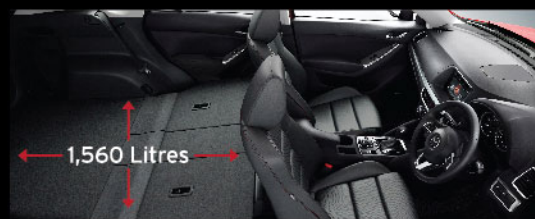
The newly adopted Electrical Parking Brake (EPB) makes it easy to turn the parking brake on or off by operating a switch mounted on the floor console.



/ Karakuri Tonneau Cover /

行李艙捲簾跟尾門開關，提存行李更加方便。只需輕按一鍵便可收起，輕鬆在高達 500L 空間中擺放大型物件。

The tonneau cover opens and closes with the liftgate, reducing the effort used in loading / unloading. A one-touch operation detaches the tonneau cover to allow loading of larger items into up till 500L luggage capacity.



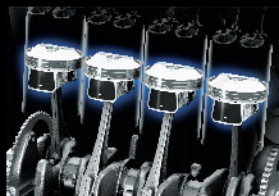
/ World's first remote control 4:2:4 rear seats /



行李艙兩側設有把手，輕輕一拉便可放平後座的左、中、右幅椅背。三幅椅背以 4:2:4 的比例獨立分割，即使坐上兩名乘客或裝上兩張小童座椅，仍可放平中間椅背，營造「中央貫通」的車廂，以容納較長的物件。

Lever located in the top trim of the luggage compartment allow individual, one-touch folding of the left, centre and right (4:2:4) seatbacks. So even with two adults or two child seats, the centre seat can be folded to enable the "centre-through mode" for carrying long items.

2



/ SKYACTIV-G /

SKYACTIV-G 引擎技術上的突破，實現了驚人的燃油效能 – 節省高達 15% 油耗。

The technical breakthroughs in SKYACTIV-G engine realize an astonishing increase in fuel efficiency – up to 15%.

SKYACTIV-G 2.5

Max. power : 192 PS / 5,700 rpm

Max. torque (2WD) : 256 Nm (26.1 kg-m) / 3,250 rpm

(4WD) : 256 Nm (26.1 kg-m) / 4,000 rpm

Fuel Consumption (2WD) : 14.3 km/L ; (4WD) : 13.5 km/L

SKYACTIV-G 2.0

Max. power : 165 PS / 6,000 rpm

Max. torque (2WD) : 210 Nm (21.4 kg-m) / 4,000 rpm

Fuel Consumption (2WD) : 15.6 km/L

/ i-stop /

配備 i-stop 停車熄匙系統，為您節省高達 5% 油耗。

Equipped with i-stop can improve fuel economy by up to 5%.

3

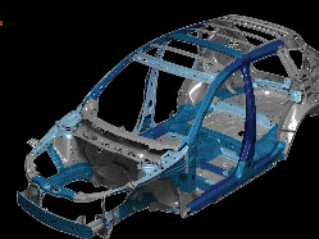


/ SKYACTIV-DRIVE /

高效能 SKYACTIV-DRIVE 6 前速自動波箱，帶給您每一種波箱最優秀的一面。

The high-efficiency six-speed SKYACTIV-DRIVE brings you the best aspects of every type of transmission.

4

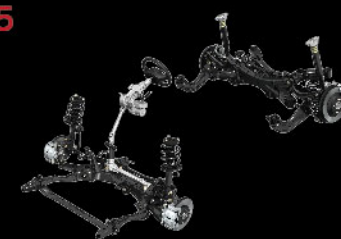


/ SKYACTIV-BODY /

SKYACTIV-BODY 剛度增強 30%，重量減輕，並能通過世界上最嚴格的撞擊安全測試。

SKYACTIV-BODY is 30% more rigid, lighter, and able to meet the world's most demanding crash safety tests.

5



/ SKYACTIV-CHASSIS /

經過改良的前後避震器結構進一步優化懸掛系統，令 CX-5 行車更平穩和更順暢。這一系列懸掛系統的更新令轉向更穩定和乘坐更舒適。

The optimized suspension with revised front and rear dampers achieves a smooth and flat vehicle posture control. These revisions helped to enhance the stability at cornering and improve ride comfort.

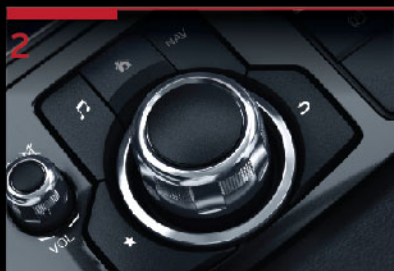


榮獲美國 IIHS 撞擊測試最高安全規格名單+
Awarded IIHS Top Safety Pick+ , USA

所有設備以規格表為準。
All equipments subject to specification sheet.



MZD CONNECT



New Generation Infotainment System providing high levels of connectivity with the highest safety

/ HMI Touchscreen Display /

全新設計的 7 吋輕觸式顯示屏，顯示音響、通訊以及導航等各種 MZD CONNECT 操作系統功能。

The newly designed 7-inch LCD touchscreen displays information from MZD CONNECT, including audio, communication and navigation functions.

/ Commander Control /

新加入的多媒體操控鍵，專為 MZD CONNECT 操作系統而開發，令操作更簡易直接。半圓佈局上設有 5 個符合人體工學的按鈕，駕駛者可舒適安心地進行單手操作。

The newly adopted commander control is specifically developed to give easy, intuitive operation of MZD CONNECT. The five ergonomically-sized buttons are laid out in a semi-circular configuration to enable comfortable, assured operation with the five fingers of one hand.

/ Navigation System /

於 SD 多媒體卡 (選購項目) 提供的原廠導航系統，讓您直接在地圖上設定目的地。

The navigation system is provided on an SD media card (Optional equipment) and lets you set target destinations directly on the map.



/ BOSE® Premium Sound System /

Bose® 高級音響系統包括 1 組 9 個 3 頻揚聲器、先進 Centerpoint® 雙環迴系統。

The Bose® premium sound system package features a 3-way 9-speaker setup, the advanced Centerpoint® 2 virtual surround sound technology,

/ "SPORT" mode /

新加入的駕駛模式選擇功能讓駕駛者可以選擇 "SPORT" 模式。駕駛者可以因應不同的交通狀況下選擇使用 "SPORT" 模式，獲得更敏銳和更爽快的加速。
(配載 SKYACTIV-G 及 SKYACTIV-DRIVE)

The newly adopted Drive Selection switch allows the driver to select a Sport mode. It enables the driver to decide how he wants the car to behave in accordance with traffic conditions and, when the driver wants it, delivers sharper, more responsive acceleration.

(Available for SKYACTIV-G with SKYACTIV-DRIVE)

GET READY TO SEE THE SUV DIFFERENTLY - MAZDA CX-5 IPM

準備就緒 體驗非凡四驅

Mazda 以全新概念打造非凡 SUV CX-5，突破傳統設計空間，賦予它獨特造型、威悍雄姿和澎湃動感。極致前衛的設計，正好體現我們的「KODO - 魂動」設計方針：豐盈的力量感源自動物跳躍的一刻，就如獵豹伸展全身肌肉捕擊獵物，CX-5充份演繹這份動態美。配以優雅的車身線條、精緻內部飾及穩健的四輪馬步，令它傲視一眾對手，在群雄中獨領風騷。

Mazda CX-5 is an SUV created from a different perspective. Sculpted, commanding and dynamic, it's been shaped without compromise. It's the result of our design direction, 'KODO - Soul of Motion'. The powerful, athletic cues of KODO capture the muscular beauty of an animal springing into motion. The energetic leap of a cheetah is reflected in Mazda CX-5. With elegant lines, graceful details and a well-planted footprint, it stands proudly apart from other SUVs.



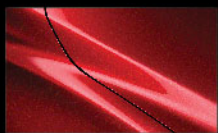
/ Sports-style 19-inch Aluminium Wheels /

全新19吋雙色跑格輪圈，中央精巧亮黑設計令造型更見寬闊，輻柱更為修長。

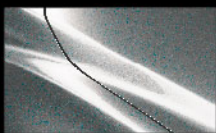
Sports-style 19-inch dual-tone wheel features machining for a stronger expression of width and spoke length.

魂動

KODO | SOUL of MOTION



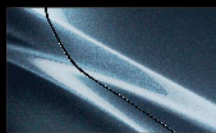
Soul Red Metallic
(41V)



Sonic Silver Metallic
(45P)



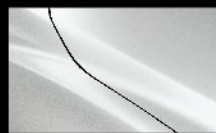
Deep Crystal Blue Mica
(42M)



Blue Reflex Mica
(42B)



Crystal White Pearl Mica
(34K)



Arctic White
(A4D)



Meteor Grey Mica
(42A)



Titanium Flash Mica
(42S)



Jet Black Mica
(41W)

九龍灣陳列室：3768 4888 宏照道15號
澳門陳列室：2831 6338 荷蘭花園 A-B

灣仔陳列室：3768 4833 告士打道148號 (新鴻基中心對面)
澳門陳列室：2871 9917 中紡工業大廈 (蔡高中學斜對面)

WWW.MAZDA.COM.HK

