



2020

THE NEXT GENERATION

JUKE TURBO





LED headlights  
LED 頭燈

LED rear lights  
LED 尾燈

Bold styling  
出眾型格

Floating roof  
懸浮車頂設計

## THE NEXT GENERATION NISSAN JUKE

# CATCHES EVERY EYE

Every detail of the New Nissan Juke's exterior is made to be looked at. Inspired by the dynamic boldness of the original Juke and Nissan sporting heritage, its style was designed to turn heads.



## 新一代日產Juke

# 懾人氣勢 • 萬眾觸目

全新日產Juke外型讓人怦然心動，每個細節均匠心獨運。貫徹Juke獨有的剛勁動感，並承襲日產經典跑車血統，設計絕對吸引旁人目光，必定成為眾人焦點。

## LARGE, CLEAR TFT INSTRUMENT PANEL

New Nissan Juke's Advanced Drive-Assist Display puts the information you need right where you need it.

### 特大高清TFT儀表板

全新日產Juke特設先進駕駛輔助顯示屏，把您所需的行車資訊清晰顯示，一目瞭然。



## FIND YOUR PASSION

The New Nissan Juke's interior is designed around you – with high quality finishes, ergonomic controls and ambient lighting designed to put you in the mood for driving. The intuitive, layered cockpit design helps to keep you safe, in control and ready to enjoy the ride.

## 重拾駕駛熱情

全新日產Juke車廂專為燃點您對駕駛的熱情而設計：奢華質感的材料、符合人體工學的操控裝置、時尚的氣氛燈光效，絕對讓您對每趟旅程都充滿期待。駕駛席分層式設計，操控直接簡單，得心應手，確保享受駕駛樂趣之餘，更能保障安全。



### APPLE CARPLAY & ANDROID AUTO\*

Plug in your smartphone and access all the things you love such as your music.

### Apple CarPlay及Android Auto\*

接駁智能手機，駕駛時即可在安全的情況下查看手機內容，包括音樂等，與各方保持連繫。

## YOUR MUSIC. YOUR WAY

Use Bluetooth streaming audio or the USB input to play music directly from your smartphone.

### 沉醉心愛樂曲

利用藍牙串流或USB插口，即可直接從智能手機播放音樂。



\* Apple CarPlay® is a trademark of Apple Inc. Apple CarPlay device requirements: iPhone 5 or later (lightning connector) and iOS 8.3 or later and needs to be connected via USB. Android Auto® is designed to work with Android phones running 5.0 (Lollipop) or higher and needs to be connected via USB.

\* Apple CarPlay®是Apple Inc. 的商標。Apple CarPlay設備要求：配備Lightning插口的iPhone 5或以上型號手機、iOS 8.3或以上版本作業系統，並且需以USB纜線連接。Android Auto®只能配合搭載Android 5.0 (Lollipop) 或以上版本作業系統的Android手機使用，並且需以USB纜線連接。

## MORE ROOM TO ENJOY

The New Nissan Juke is designed for real life. That means plenty of storage for your phones, drinks and other items, around the cabin. Plus front and rear USB ports to help you stay juiced up.

## 空間更寬敞

全新日產Juke全面配合您的生活需要，車艙內儲物空間充裕，存放手機、飲品等物品綽綽有餘。前後排均設有USB插口，確保電子產品時刻電力充足。



## AS ADAPTABLE AS YOU ARE

The New Nissan Juke is proof that you can mix fun with practicality. It's designed to make it easier to get your stuff in and out, and to carry wide, long and bulky items like furniture boxes and luggage with ease.

### 靈活彈性

全新日產Juke集實用與趣味於一身：行李艙方便裝卸貨物；尺寸特大的笨重物品，例如行李箱及傢俱，也可輕易搬運。



## DRIVE MORE LIKE A PRO WIN CONFIDENCE, OWN THE ROAD.

Nissan's Intelligent Driving technologies are always on the alert and ready to step in to keep you out of trouble. With a total of 8 airbags, the safety of every journey is ensured.

### 馭者無雙 前瞻科技 信心前行

交通情況瞬息萬變，日產先進駕駛科技協助駕駛者適時作出應變及防範一切未然，更配備8個安全氣袋，徹底守護每趟旅程。



#### LANE DEPARTURE WARNING (LDW) 車道偏離警告系統 (LDW)

Wake up! This system will alert you if you start drifting out of lane without indicating. 如果系統察覺車身偏離了正確行車線，會發出警示。



#### INTELLIGENT FORWARD COLLISION WARNING (IFCW) 前方碰撞預警系統 (IFCW)

Help if you need it. At low speeds, the system warns you if it detects a risk of forward collision with a vehicle. 慢速時，當系統判斷前方車輛距離太近，而有機會產生碰撞時，會自動警示駕駛者。

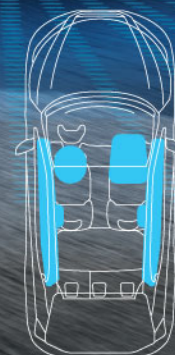


#### INTELLIGENT EMERGENCY BRAKING (IEB)\* 前方碰撞輔助制動系統 (IEB)\*

Making it easier for you to drive in a congested city. With Intelligent Emergency Braking (IEB), your Nissan Juke is able to detect the car in front and analyze the distance between you and the car ahead, then signal an instant alert and apply light, automatic braking, so you can avoid a possible collision.

系統讓您在擠塞的市區開車更輕鬆。日產Juke利用前方碰撞輔助制動系統 (IEB) 偵測並分析您與前方車輛的距離；若距離太近則發出警號及緩緩減速，繼而自動煞停，讓您可及時避免碰撞。

\* 僅用於輔助駕駛，不得取代人手操作車輛。IEB is not intended as a replacement for driver braking



#### 8 STANDARD AIRBAGS 8安全氣袋

When a collision is unavoidable, Nissan's Zone Body Construction helps absorb the impact, while the advanced seat belt and airbag systems help protect passengers.

精密撞擊緩衝區域式車身結構，三點式安全帶及8個安全氣袋，於嚴重碰撞時進一步保護車上各乘員。



## A SMILE ON YOUR FACE

From the responsiveness of its lightweight turbocharged engine to quick reaction shifting, from the rigid, ultra-high strength steel chassis to the sporty steering and suspension, new Nissan Juke handles like a dream. Add technologies and drive modes to maximise precision and control then check that smile on your face!

## 不禁會心微笑

全新日產Juke就是您夢寐以求的dream car：輕量渦輪增壓引擎反應敏銳，轉波反應特快；配合超高強度鋼製底盤、跑車式操控和懸掛系統，定能滿足您所有要求。搭載多項先進技術和駕駛模式，準繩度及操控感前所未有。難怪一坐上Juke的駕駛席，便不禁會心微笑。



### INTELLIGENT RIDE CONTROL (IRC) 主動式乘坐穩定系統 (IRC)

Take the rough with the smooth. This system applies subtle braking to prevent disturbance when encountering bumps and ensures a comfortably smooth ride.

每當遇上顛簸不平的道路，即以智能感應制動系統和引擎扭力，減低車身擺動，確保流暢舒適的行車表現。



### INTELLIGENT TRACE CONTROL (ITC) 主動式軌跡控制系統 (ITC)

For confident handling around corners, this system adjusts the brake pressure on individual wheels to keep you on an optimal line right through the turn.

透過調節每個車輪的制動力，於轉向時修正行車軌跡。



### DRIVE MODES 駕駛模式

Select 'ECO' for enhanced fuel efficiency, 'Standard' for the best balance between fuel efficiency and performance, or 'Sport' for maximum driving pleasure.

「環保」模式慳油節能，「標準」模式在慳油和性能之間取得最佳平衡，「運動」模式則讓您盡情享受操控隨心的駕駛樂趣。



### PADDLE SHIFT 軟盤轉檔撥片

Responsive paddle gear change for a more fun, more engaging driving experience.

轉檔反應更快，提升駕駛樂趣，互動感更強。



### NEW WET DUAL-CLUTCH TRANSMISSION (DCT) 兩者兼得 全新濕式雙離合器波箱 (DCT)

The all-new 7-speed DCT with manual shift mode, smoothly delivers immediate power shift and efficiency for a sporty feeling.

全新7前速雙離合器自動波箱附手動轉檔模式，轉檔表現敏捷順滑，進一步協助節省油耗之餘，提供更動感行車表現。

## COLOURS 車身顏色

### TWO-TONE COLOURS\* 雙色調\*



Pearl Black Roof +  
Fuji Sunset Red (XEY)



Pearl Black Roof +  
Storm White (XDF)



Pearl Black Roof +  
Chestnut Brown (XDW)



Pearl Black Roof +  
Burgundy (XDX)



Pearl Black Roof +  
Vivid Blue (XDY)



Pearl Black Roof +  
Gun Metallic (XDJ)



Pearl Black Roof +  
Blade Silver (XDR)



Blade Silver Roof +  
Pearl Black (XDZ)



Blade Silver Roof +  
Fuji Sunset Red (XEZ)



Blade Silver Roof +  
Ink Blue (XEA)



Blade Silver Roof +  
Vivid Blue (XEC)



Blade Silver Roof +  
Chestnut Bronze (XED)



Blade Silver Roof +  
Burgundy (XEE)



Fuji Sunset Red Roof +  
Pearl Black (XFC)

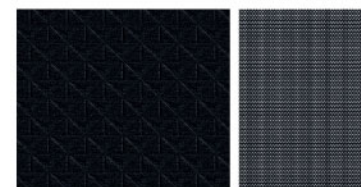


Fuji Sunset Red Roof +  
Blade Silver (XFA)



Fuji Sunset Red Roof +  
Gun Metallic (XFB)

\*Applicable in specific grades 適用於指定級別



### INTERIOR TRIMS 內籠裝飾

#### STANDARD

Black embossed fabric /  
Black fabric with  
Dark Grey accent



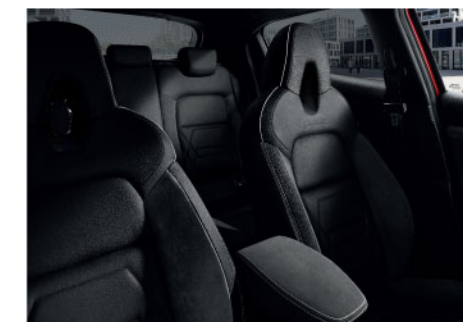
Scan to learn more  
掃描了解更多

## INTERIOR TRIMS 內籠裝飾



### INTERIOR PERSONALISATION PACK: ENERGY ORANGE

Black partial leather with orange inserts



### INTERIOR PERSONALISATION PACK: ENIGMA BLACK

Black partial leather with black Alcantara®  
inserts



### INTERIOR PERSONALISATION PACK: LIGHT GREY

Black embossed fabric with light grey  
Syntech Leather inserts

Please consult with Sales Consultants for applicable combination of interior and exterior colours.  
請向銷售顧問查詢可供配搭之車廂及車身顏色組合。

## SPECIFICATIONS 規格表

| Dimension, Weight 尺寸、重量    |         |            |
|----------------------------|---------|------------|
| Model 型號                   |         | Juke Turbo |
| Overall length 車身全長        | mm      | 4,210      |
| Overall width 車身全寬         | mm      | 1,800      |
| Overall height 車身全高        | mm      | 1,593      |
| Wheelbase 軸距               | mm      | 2,636      |
| Curb weight 淨重             | kg      | 1,276      |
| Seating capacity 乘車人數      | persons | 5          |
| Min. turning radius 最小迴旋半徑 | m       | 5.29       |
| Tires & wheels 輪胎          |         | 215/60 R17 |

| Mechanical 機械特性        |          |  |
|------------------------|----------|--|
| Model 型號               |          | HR10DDT  |
| Type 類型                |          | Direct injected and turbocharged straight-3 engine<br>直列三汽缸、渦輪增壓器、燃油直接噴注引擎                       |
| Bore X stroke 缸徑 x 衝程  | mm       | 72.2 x 81.3  |
| Displacement 排氣量       | cc.      | 999  |
| Fuel consumption 燃料消耗量 | L/100km  | 6.5 (WLTP)   |
| Max. power 最大馬力        | PS/rpm   | 117/5,250  |
| Max. torque 最大扭力       | Nm/rpm   | 180/1,750-4,000  |
| Transmission mode 變速模式 |          | 7-sp DCT - Automatic with manual +/- shift mode & paddle shifters<br>7速雙離合器自動波箱附手動 +/- 模式及軌盤轉檔撥片 |
| Drive wheel 驅動模式       |          | Front wheels 前輪驅動  |
| Steering 轉向模式          |          | Power assisted rack & pinion gear 動力輔助齒輪與齒棒式   |
| Suspension 懸掛系統        | Front 前輪 | Independent McPherson struts 獨立麥花臣式支柱  |
|                        | Rear 後輪  | Twist beam coil spring 扭力桿彈簧   |
| Brakes 制動系統            | Front 前輪 | Ventilated disc 通風碟式   |
|                        | Rear 後輪  | Disc 碟式  |

本小冊子內容及圖片僅供參考 Specifications & photos are reference only. Please contact Nissan Hong Kong for details.



日產前瞻科技Nissan Intelligent Mobility，引領嶄新的駕駛時代。日產以創新技術，將汽車與現代生活徹底融合，創造出從容自信和活力澎湃的駕駛體驗。不論是智能駕駛輔助技術，還是更高效的電動汽車——種種期盼中的科技，將在不遠的未來由日產為您實現。

Intelligent Mobility guides everything we do. We're using new technologies to transform cars from mere driving machines into partners. Together the journey is more confident, connected, and exciting. Whether it's cars that share the task of driving with you, or more efficient, more power EV, it's all in the very near future. And it's a future already taking shape in the Nissan you drive today.

**合誠汽車有限公司**  
**Honest Motors Ltd.**  
Member of DCH Holdings

Showrooms: G/F, Chinachem Century Tower, 178 Gloucester Road, Wanchai  
陳列室 G/F, DCH Building, 20 Kai Cheung Road, Kowloon Bay  
Corporate & Fleet Sales Enquiry Hotline

**Free parking**

Macau Dealer: Xin Kang Cheng Motors Ltd.  
澳門經銷商 Avenida 1 de Maio, No. 672, The Bayview R/C H, Macau

[www.nissan.com.hk](http://www.nissan.com.hk)

灣仔告士打道178號華懋世紀廣場地下  
九龍灣啟祥道20號大昌行集團大廈地下  
公司車隊銷售熱線

**免費泊車**

新康誠汽車有限公司  
澳門勞動節大馬路672號御景灣地下H座

Tel: 2803 5333  
Tel: 2262 1088  
Tel: 2262 1042

Tel: (853) 2871 9838

**NISSAN**



NISSAN HONG KONG

072020