

# LEXUS RX



# RX

At Lexus, we have a lot to be proud of. A pioneer in luxury car electrification for nearly 20 years. Over 2 million Self-Charging Hybrids on the road across the globe. Cars that stand out for their sophistication, proven quality and award-winning reliability.

These are impressive facts, but for Lexus, performance is more than just numbers. And electrification is more than just batteries and motors. It's the chance to define a new kind of driving pleasure, where each journey radiates confidence, control and comfort. With your Lexus responding instantly to our every move, you'll enjoy a luxury that is personal, a luxury rooted in the uniquely crafted connection between car and driver.

Just drive the new RX450h+ Plug-in Hybrid and you'll know what we mean.

This is Lexus Electrified.

Scan the QR code to learn more about the Lexus RX



ALL IMAGES CONTAINED IN THIS DOCUMENT ARE FOR ILLUSTRATIVE PURPOSES ONLY.  
LOCAL SPECIFICATION MAY VARY.



LEXUS

---

# LEXUS LINK+ CONNECTED SERVICES

---

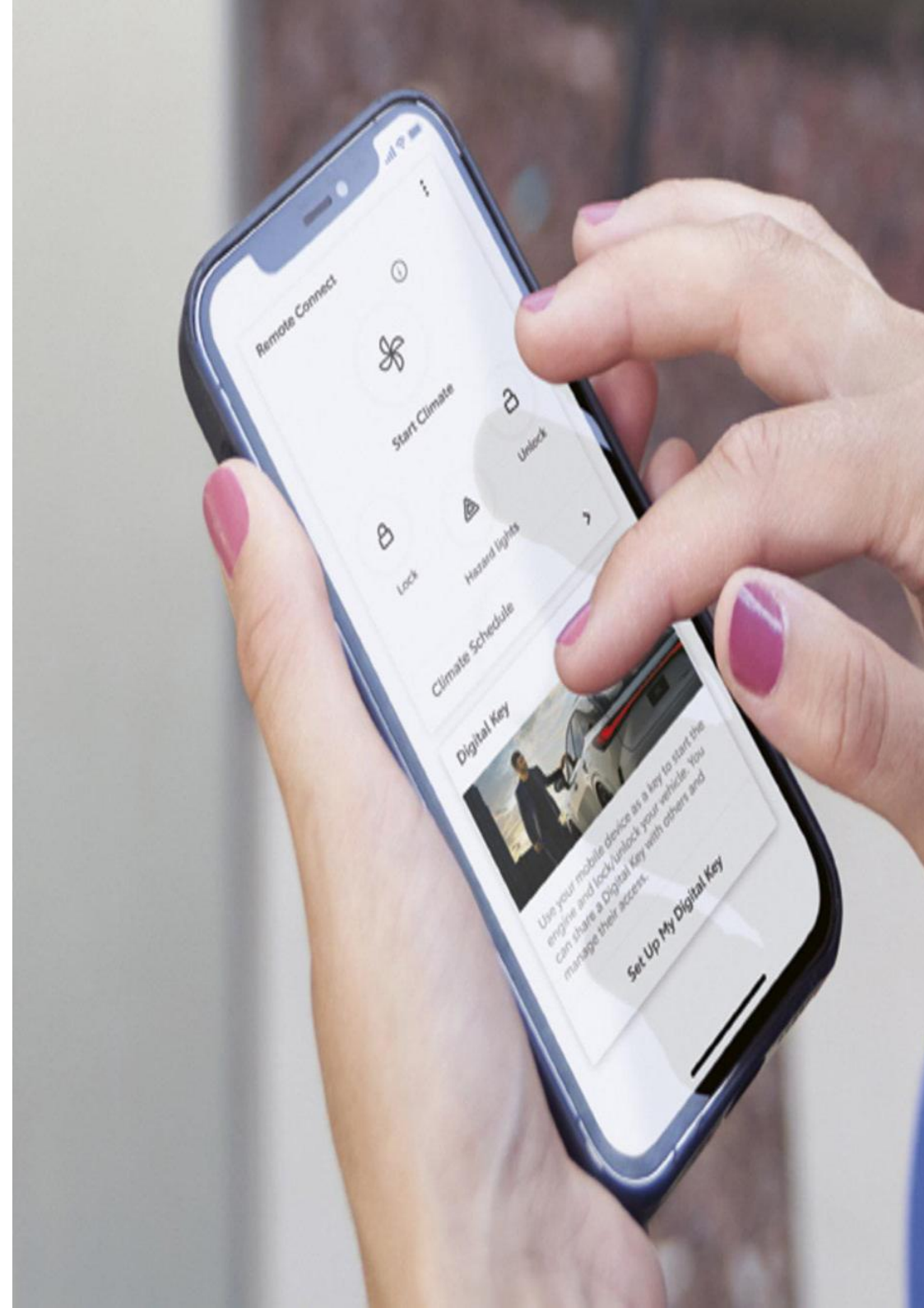
Driving in a Lexus has never been better and with Lexus Link Connected Services the experience becomes even smoother, so you're always comfortable and in control, no matter where your drive takes you.

Scan the QR code to learn more about the Lexus Link App.



---

LEXUS **RX**



LEXUS

---

# MANUFACTURER'S WARRANTY

---

For peace of mind Lexus manufacturer's warranty ensures that every trip runs smoothly with:

## Manufacture Warranty

- 3yrs/100,000km - Manufacture Warranty
- 3yrs/unlimited mileage - Surface rust/ Paintwork
- 12yrs/unlimited mileage - Corrosion Perforation

## Hybrid Warranty

- 5yrs/100,000km - All Hybrid Components (Including Hybrid Battery)
- Up to 15yrs/unlimited mileage Hybrid Battery Warranty once serviced with a Lexus Dealer

For further warranty details contact your local Lexus Dealer.



LEXUS

---

# LEXUS RELAX

---

Lexus Relax is a testament to the confidence we place in the quality of our vehicles. After your manufacturer's warranty finishes, you can still feel complete peace of mind, with 12 months OR 15,000km warranty when you service with us. So you can rest assured that your car is in safe hands—with expert technicians, who only use genuine parts. So your Lexus stays 100% Lexus.

When you choose Lexus to service your vehicle, we'll reward your loyalty. Once your service is due, all you need to do is bring your Lexus in for a service and your Lexus Relax warranty will be renewed until your next service is due—up to 10 years vehicle age or 185,000km (whichever comes first).



LEXUS

# PERFORMANCE AND EFFICENCY

	2.5 PHEV AWD
ENGINE (cc)	2.5 litre 4-cylinder in line
ACCELERATION 0-100KM/H (s)	6.5
TOP SPEED (km/h)	200
MAX POWER (hp)	309
MAX ENGINE TORQUE (Nm @ rpm)	227@ 3200 - 3700
BATTERY (Type)	Lithium-ion Battery

## EMISSIONS & FUEL CONSUMPTION

	2.5 PHEV AWD
CO2 (g/km)	25
FUEL (l/100km combined)	1.1

## DIMENSIONS

	2.5 PHEV AWD
HEIGHT (mm)	1695
LENGTH (mm)	4890
WIDTH (mm)	1920
MAX BOOT CAPACITY SEATS UP (l)	461
TURNING CIRCLE (m)	11.8
TOWING CAPACITY (kg) (Braked)	2000
CURB WEIGHT (kg)	2225

LEXUS **RX**



LEXUS

# AC CHARGING TIMES

Our breakthrough Lexus Plug-in technology allows you to enjoy a long range of emissions-free driving in EV mode with amazing refinement and powerful acceleration from a single charge, carried out at home or on the go. But that is only half the story. The car's Lexus Self-Charging Hybrid powertrain then comes into its own, providing an exceptionally efficient drive in hybrid mode, with low fuel consumption and emissions, irrespective of how long your journey is.

## RX 450h+ PHEV

On Board Charger	6.6kW
Battery Capacity EV	18.1kWh
Range	67-68km

32A Wall Box	Up to 2hrs 30 mins
10A Home Socket	Up to 9hrs



# **RX** EQUIPMENT & SPECIFICATION



RX GRADES

# LUXURY



## Safety

- LSS+ 3
- eCall
- Road Sign Assist
- Adaptive Cruise Control
- Pre-Crash System inc. Driver Monitor Camera
- Blind Spot Monitor
- Lane Trace Assist
- Lane Change Assist
- Safe Exit Assist
- Supplemental Restraint System (SRS) airbags
- Predictive Efficient Drive

## Convenience

- Smart Entry w/ Power Back Door with Kick Function
- Wireless Charger
- Electric Powered Steering Column
- Luggage Compartment Power Fold Rear Seats
- Triple Zone Automatic Climate Control w/ Humidity Sensor & Nanoe X
- Drive Mode Select (Eco, Normal, Sport)
- Smart Digital Key

## Seats

- Driver And Passenger Power 8-Way Seat Adjustment w/ Driver Memory
- Driver and Passenger 2-Way Power Lumbar Support
- Front Seats Heated & Ventilated
- Rear Seat - Manual Fold and Recline

## Interior & Instrumentation

- Leather Steering Wheel, Heated w/ Audio Switches And Paddle Shifts
- Ambient Lighting (64 Colour)
- Illuminated Entry
- Smooth Leather
- 7" Multi-Information Display
- Instrument Panel - Film

## Audio & Nav

- Smartphone integration (Wireless Apple CarPlay™\*, wired Android Auto™)
- Embedded Navigation

## Exterior & Visibility

- LED Front Fogs
- Cornering Lights
- Rain Sensor
- EC interior mirror
- Privacy Glass
- Triple-LED Headlamps w/ Automatic High Beam
- Panoramic View Monitor
- Integrated Roof Rails - Silver
- Parking Sensors w/ Braking (PKSB) - Objects, Vehicles, Pedestrians
- Panoramic Roof w/ Tilt & Slide
- Body Coloured Exterior Mirror Covers

## Wheels

- 21" Machine Faced Alloy Wheels, (235/50 R21)
- Tyre Repair Kit

Nitrogen Oxides (NOx)	3.7 mg/km
Fuel Consumption Combined (WLTP)	11.1/100km
CO <sub>2</sub> Combined (WLTP)	25 g/km
Annual Road Tax	€140
Braked Towing Capacity	2,000kg
EV Range (Combined Cycle)	68km

\*Apple CarPlay is a trademark of Apple Inc.

LEXUS RX

RX GRADES

# PREMIUM



## Safety

- LSS+ 3
- eCall
- Road Sign Assist
- Adaptive Cruise Control
- Pre-Crash System inc. Driver Monitor Camera
- Blind Spot Monitor
- Lane Trace Assist
- Lane Change Assist
- Safe Exit Assist
- Supplemental Restraint System (SRS) airbags
- Predictive Efficient Drive

## Convenience

- Smart Entry w/ Power Back Door with Kick Function
- Wireless Charger
- Electric Powered Steering Column
- Triple Zone Automatic Climate Control w/ Humidity Sensor
- Luggage Compartment Power Fold Rear Seats
- Triple Zone Automatic Climate Control w/ Humidity Sensor & Nanoe X
- Drive Mode Select (Eco, Normal, Sport)

## Interior & Instrumentation

- Ambient Lighting (64 Colour)
- Illuminated Entry
- 7" Multi-Information Display

## Audio & Nav

- Smartphone integration (Wireless Apple CarPlay™\*, wired Android Auto™)
- Embedded Navigation

## Exterior & Visibility

- LED Front Fogs
- Cornering Lights
- Rain Sensor
- EC interior mirror
- Privacy Glass
- Panoramic View Monitor
- Integrated Roof Rails - Silver
- Parking Sensors w/ Braking (PKSB) - Objects, Vehicles, Pedestrians
- Panoramic Roof w/ Tilt & Slide

## Seats

- Front Seats Heated & Ventilated
- Rear Seat - Manual Fold and Recline

## Wheels

- Tyre Repair Kit

## Adds to Luxury

- Luggage Compartment - Power Fold & Reclining Rear Seats
- Intelligent Parking Assist
- Sun Shade (Manual) - Rear Doors
- Leather and Wood Steering Wheel, Heated w/ Touch Switches And Paddle Shifts
- Semi-aniline Leather
- Instrument Panel - Wood
- Driver And Passenger Power 10-Way Seat Adjustment w/ Driver & Passenger Memory
- Driver and Passenger 4-Way Power Lumbar Support
- Front And Rear (Outer) Seats Heated & Ventilated
- Rear Seat - Electric Fold and Recline
- 14" Touchscreen Display w/ Mark Levinson
- Triple-LED w/ Adaptive Highbeam
- Adaptive Variable Suspension
- 21" Premium Dark Grey Alloy Wheels, (235/50 R21)

Nitrogen Oxides (NOx)	3.7 mg/km
Fuel Consumption Combined (WLTP)	11.1/100km
CO <sub>2</sub> Combined (WLTP)	25 g/km
Annual Road Tax	€140
Braked Towing Capacity	2,000kg
EV Range (Combined Cycle)	67km

\*Apple CarPlay is a trademark of Apple Inc.

LEXUS RX

# RX EXTERIOR COLOURS



Sonic Platinum **(1L2)**



Sonic White **(085)**



Sonic Titanium **(1J7)**



Sonic Grey **(1L1)**



Graphite Black **(223)**



Morello Red **(3R1)**



Sonic Copper **(4Y5)**



Terrane Khaki **(6X4)**



Deep Blue **(8X5)**

LEXUS

---

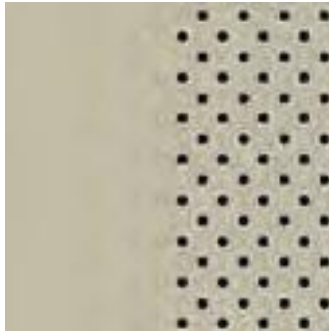
# RX INTERIOR TRIMS

---

Luxury Grade Smooth Leather



**Black**

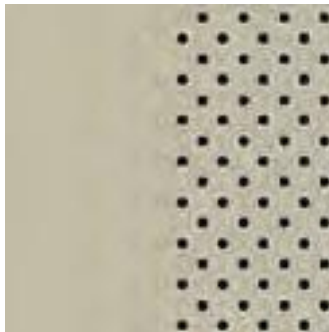


**Ammonite Sand**

Premium Grade Semi-Aniline Leather



**Black**



**Ammonite Sand**

LEXUS

---

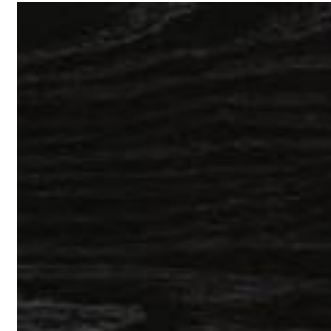
# RX INTERIOR INLAYS

---

Inlays



**Luxury Grade  
Black Hologram**



**Premium Grade  
Ash Sumi Black**

LEXUS

# RX KEY ACCESSORIES



## RX ESSENTIAL PACK



### TRUNK LINER

Tailored to fit the trunk of your vehicle and provide protection against dirt and spills. The design features a special anti-slip surface pattern to help stop luggage moving.

### FRONT AND REAR MUD GUARDS

Lexus mud guards are especially shaped to fit the wheel arches of your vehicle. They help to maintain the vehicle exterior by protecting against excessive dirt, mud spray and flying stone chips.

## RX STYLE PACK



### LEXUS LEATHER TEXTILE FLOOR MATS

Genuine tailored fit rubber floor mats help protect your carpets against the very worst conditions that you or your passengers dare to tread inside.

### REAR BUMPER PROTECTION PLATE

Designed to protect the rear bumper paintwork against scratching when sliding heavy or awkward loads into the boot.

### REAR CHROME GARNISH

The rear chrome garnish makes a statement by highlighting your car's strong rear-end design.

### CHROME SIDE SILLS

A bold dash of chrome along the lower side contours to emphasize the RX's sculptured urban styling.





To the best of our knowledge, all information in this product guide is correct at the time of going to print. Details of specifications and equipment provided in this product guide are subject to local conditions and requirements and may, therefore, vary from models available in your area. Please enquire with your local dealer for details on your local specifications and equipment. Vehicle body colours may differ slightly from the printed photographs in this Product Guide. Lexus Ireland reserves the right to alter any details of specifications and equipment without prior notice.

© 2024 by Lexux Ireland. No part of this publication may in any way be reproduced without the prior written approval of Lexus Ireland.

05/24/RX/IRE