

 **HYUNDAI**
Drive your way



HYUNDAI *i20*

1.2/1.4 PETROL

1.4 CRDi DIESEL



ALL SET TO SWEEP YOU OFF YOUR FEET PRESENTING THE ALL NEW i20

The winner of the prestigious 'Viewer's Choice of The Year' and 'Design of the Year' awards, the i20 is all set to sweep you off your feet once again. In an all-new avatar showcasing the best blend of designing techniques and technology, this four wheeled beauty has a multitude of features like the character lines on the hood and side profile, wide air dam and flared wheel arches. No wonder then that the i20 is the hottest thing on wheels.

The all-new Hyundai i20 is the epitome of the modern luxury compact. Sharp and stylish on the outside, spacious and versatile inside, it combines comfort, safety and reliability in a package that is most alluring.



Chrome Grille

The all-new i20 has a new attraction- The front chrome grille. This exciting trim adds to the character of the car, so it enjoys pride-of-place with you.



ORVM Turn Indicators

To amplify your style quotient even further, Hyundai has introduced Outside Rear View Mirror turn indicators in the all-new i20. The first-in-segment ORVM turn indicators not only add to the i20's status as a premium compact, but also provide enhanced safety.



Electric Foldable Exterior Mirror

The exterior mirrors are not only electrically adjustable, but can also be folded completely with the press of a button – just the thing to get you out of a tight spot.



Tailgate Handle

The tailgate handle is in itself a masterpiece - stylish & body-coloured, it adorns a perfectly placed chrome Hyundai logo. Lift it up to experience the richness of i20's 5-star luxury.



Alloy Wheels

The stylish and light-weight 5-spoke alloy wheels complement the Hyundai i20's sporty looks, while its wide 185 mm tyres provide superior grip and ride comfort.



Keyless Entry with Folding Key and Burglar Alarm

This careful design ethos can be found even in the ignition key console, which has a remote locking and unlocking facility with a convenient folding bayonet. And to top it all, the new i20 also features a burglar alarm for enhanced security.

ALL EYES ON THE ALL NEW i20: 5-STAR SAFETY, 5-STAR PERFORMANCE AND 5-STAR LUXURY



SMOOTH, SUAVE AND SURE ENGINEERING

Hyundai's intelligent designing has created a car with incredibly airy and spacious interiors. The i20's spacious insides provide practical and versatile solutions for different traveling requirements. Just like the eye-catching exteriors, the inside is superbly designed and beautifully put together using top quality materials. Being luxuriously comfortable and convenient, the Hyundai i20 cocoons you on your journey through the rigours of the modern world.

Information Centre

The instrument panel features easy-to-read dials with a silver finish and eye-catching blue-white lights, adding elegance to its looks. While a cluster of warning lights and indicators surrounds the critical dials, the unique digital multi-info display in the centre of the dashboard reveals the trip distance, current audio selection, outside temperature, time, calendar and engine running time.



2-DIN MP3 Audio

The i20's sophisticated 2-DIN MP3 music system with 6 speakers (4 speakers + 2 tweeters) provides an exhilarating on board audio experience, making your 'Uber Cool' drives even more pleasurable.



Metal Finish Centre Fascia

Hyundai has left no stone unturned to give the interiors of the i20 a chic and suave look. Its feature-packed interiors showcase a high quality metal finish on the centre fascia, steering wheel and AC vents. All this adds a sense of luxury to the cabin complementing the smooth lines and contours of the interior.

Blue LED Interior Illumination

A never seen before feature and a dazzling new innovation now dons the i20. The eye-soothing first-in-segment blue LED interior illumination is present in all variants of the i20, giving the interiors a fresh new feel. This exclusive new feature gives the i20 an upmarket and an elite identity creating a niche for itself.



Dynamic Steering Wheel

The steering wheel not only offers tilt and telescopic adjustments for individual driving comfort, but also has handy inset audio controls. In addition, a slick metallic insert and leather wrapping add to the i20's luxurious and sporty feel.



Audio-Visual Navigation System

The amazing factory-fitted Audio-Visual Navigation System in i20 is yet another segment-first offering from Hyundai.

The cutting-edge GPS based navigation system* with step-by step voice directions and a convenient 5" LCD touch-screen acts a complete point-to-point route guide for you. You can easily chart your route within & across multiple cities, being aided by information on the nearest Hyundai touchpoints & numerous other points of interest. It ensures that you never lose your way out on the road and also records travel data for you.

Make full use of your iPod/ USB device to enjoy movies on the go, or let the sophisticated CD/MP3 Audio player engage 6 speakers to pamper your ears. While steering-mounted controls enable you choose desired files & sound level, the Bluetooth with audio streaming function enables you to handle calls while enjoying all other AVN features in a hassle-free manner, making it a true tech carnival.

What's more, a separate sleek hand remote for those at the rear completes the luxury package. Enjoy 5-star luxury with the i20 AVN- an experience only the Uber Cool Hyundai can offer.

*offered in alliance with MapmyIndia - Software version 5.0



Cool Glove Box

A bonus when the temperature soars high – the surprisingly large glove box is also linked to the air conditioning system, keeping its contents cool, no matter what the temperature outside.



Aux-in and USB Port

Inside the Hyundai i20 you can enjoy music or other contents stored in the i-Pod or USB memory devices by connecting to the Aux-in and USB port, provided on centre-fascia.

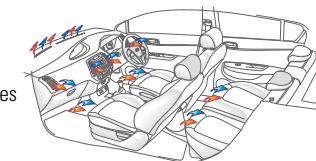
Seat to Suit All

To accommodate all occupants comfortably, the driver's seat is designed to adjust in multiple ways. The height adjuster helps the driver to arrive at a perfect driving position. All this maximizes the pleasure of driving the i20.



Full Automatic Temperature Control

No matter what the conditions outside, you can be assured it will always be perfect inside thanks to the i20's temperature control system. The car's fully automatic temperature control feature spares you the hassle of manually adjusting the AC settings, offering you both comfort and enhanced safety throughout the drive.



Sunroof

Besides adding to the driving pleasure, the sunroof also enhances the Hyundai i20's sporty look. The tilt function facilitates rapid ventilation in hot weather. It's like enjoying an open-air drive while you are comfortably seated within the luxury and safety of the car. With a one-touch opening system, the sunroof's slide and tilt functions make it extremely convenient to use.



CHOOSE YOUR UBERCOOL TYPE

There is an i20 for everyone. With the introduction of two new trims- Era and Sportz, the i20 now comes in a range of 10 variants to match your taste. It is an extremely difficult task to pick one out of the many equally tempting combinations. The car offers the revolutionary 1.2 L Kappa engine that offers an unbeatable combination of performance efficiency and refinement. This premium compact is also available in 1.4 CRDi diesel and 1.4 petrol automatic variants. While the former promises maximum power at low running cost, the later promises added driving convenience with automatic transmission. All i20 engines are upgraded in the new i20 and fine-tuned to give enhanced economy along with extreme driving comfort. With this refinement in technology facilitating superior fuel efficiency, the i20 now fits every pocket. So, choose your pick and experience a never-before drive, each day.

Smooth Drives

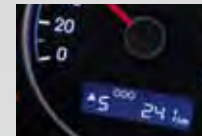
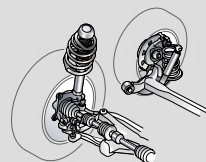
The suspension set-up is critical as it is required for a car's riding comfort, road grip as well as handling. For the Hyundai i20, the engineers have fine-tuned the MacPherson strut front suspension and torsion beam rear axle to get the optimum combination of qualities. While its large wheelbase (2,525mm) and ultra wide track allow unmatched stability at all times, its gas-filled shock absorbers add to the supple ride.

6 Speed Manual Transmission

You can expect this only from Hyundai. The i20 CRDi is the first premium compact to offer 6 speed manual transmission, giving it a winning edge over the competition. The provision of an extra gear facilitates enhanced fuel-efficiency and smoother drivability. This new addition further improves the car's refinement by lowering the rpm operation, resulting in lower noise, vibration and harshness (NVH). All this further increases engine life, while also giving you a comfortable and peaceful drive.

Manual Transmission Shift Indicator

Hyundai continues to offer innovative technologies for its customer's convenience. The first-in-segment manual transmission shift indicator is an innovative digital reminder for the driver of the i20 to change gears. Upshift and downshift are indicated with an arrow, while the recommended gear usage is also displayed alongside. This unique feature enables you to decide the optimum gear usage to achieve maximum fuel efficiency while driving.



1.2L Kappa Engine

The power behind the incredible performance of the Hyundai i20 is the Euro V ready Kappa engine. It sports the powerful and efficient 16V DOHC Kappa engine, delivering excellent power and 11.4 kgm of torque. The cylinder block and head with light aluminium alloy construction, lowers the weight and enhances the efficiency of this engine. This revolutionary 1.2 L Kappa Engine is a combination of cutting-edge technologies like offset crankshaft and hydraulic lash adjusters and is responsible for the car's excellent performance and economy. The engine characteristics have also been fine-tuned in the all new i20 to achieve the best-in-class fuel economy.

1.4 CRDi Diesel Engine

i20's 1.4 CRDi diesel engine with 4 cylinders & DOHC 16 valves is phenomenally efficient and brings out ultimate performance. It delivers an outstanding 90ps of power besides an unmatched 22.4kgm of torque at a low 1,750-2,750rpm, giving you the best of both worlds- a power packed fun drive and an incredibly high fuel efficiency. Avant-garde technologies like Hydraulic lash adjusters and Electrical EGR (Exhaust Gas Recirculation) with cooler ensure minimized NVH, low maintenance and lesser emissions to keep both nature and you, smiling. Moreover, the i20 CRDi also features a new high pressure Common Rail Injection system which along with a 6 speed transmission offers an unbeatable combination of power and economy.

1.4 Gamma Engine with Automatic Transmission

The i20 offers all the luxuries of a modern premium compact. Powered by the extremely robust 100 ps, 1.4 litre Gamma petrol engine and facilitated with an extra convenient 4 speed automatic transmission, this car makes stop-start city driving a cake walk. The 6 drive modes, overdrive lock facility and the cutting-edge variable line pressure system in automatic transmission ensure a smooth drive, while the advanced VTVT technology and light aluminium alloy construction of the 1.4 engine enhances power, economy and engine life.

* **Overdrive Lock** : For a sporty drive and increased torque, you can disable the 4th gear using the overdrive lock switch.

Automatic



6 Airbags

Dual front, Side and Curtain airbags



ENTER THE SAFE ZONE. STEP INTO THE ALL NEW i20.

Apart from being the coolest compact on the roads, the i20 is also the safest. With state-of-the-art suspension, excellent braking, reinforced body structure and the reassurance of six airbags, it is one of the safest cars available today. The installation of state-of-the-art safety devices reduces the risk of injuries in case of an accident. Such endeavors are a sheer reflection of the depth of Hyundai's commitment towards passenger safety. All this has led the Hyundai i20 to earn the most coveted '5-star Euro NCAP' safety rating.

6 Airbags

The Hyundai i20 is the first car in its segment to offer 6 airbags - Dual Front, Side and Curtain. In the event of an accident, dual front airbags along with side and curtain airbags prevent head and side injuries, making it safest for all the occupants. As an added convenience, it also has PAB (Passenger Airbag) cutoff switch to switch off passenger airbag in case the front passenger seat is unoccupied.

Impact Sensing Door Unlock

This valuable safety feature ensures that the car doors unlock instantly in case of a collision, ensuring a quick and safe escape for all occupants.

ABS with EBD

ABS prevents wheel lock-up during panic braking especially on slippery surface while EBD distributes brake pressure efficiently to all the four wheels. This ensures stable braking thus, making the system highly-effective on slippery surfaces, preventing skidding and in retaining car stability and steer ability.



Rear Disc Brakes

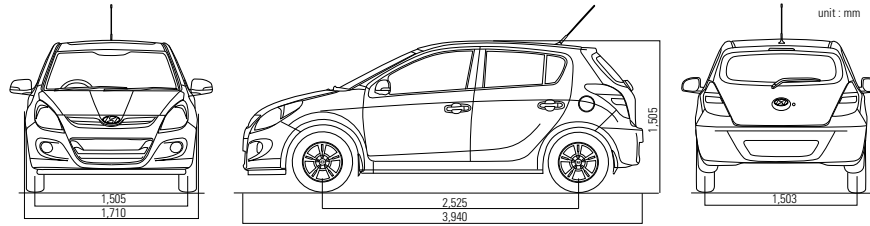
For the first time in the segment, the Hyundai i20 comes equipped with rear disc brakes for enhanced braking and occupant safety.

Seatbelt Reminder

The Hyundai i20 has a unique feature - 'seat belt warning' for all five occupants. Thus, reinforcing the company's commitment towards passenger safety.



* Euro New Car Assessment Program (Euro NCAP) is a stringent passenger and pedestrian safety measure in Europe that provides motoring consumers with a realistic and independent assessment of the safety performance of automobiles. The Hyundai i20 got the five star rating, the highest safety performance rating for a car in Europe.



KEY FEATURES

		Era	Magna	Sportz	Asta	Asta (O) Sunroof
ENGINE & TRIM PLAN	1.2 Kappa - PL	•	•	•	•	•
	1.4 CRDi	•	•	•	•	•
	1.4 Gamma - PL (AT)					•
SAFETY & SECURITY	Central Locking (5 DR CLS)	S	S	S	S	S
	Key not removed Reminder - CLS disabled	S	S	S	S	S
	RHD (Right Hand Drive) Controls	S	S	S	S	S
	Day & Night Inside Rear View Mirror	S	S	S	S	S
	Impact sensing auto door unlock	S	S	S	S	S
	Immobiliser	S	S	S	S	S
	Keyless Entry with Burglar alarm & folding key	-	-	S	S	S
	ABS with EBD	-	-	-	S	S
	Airbags - Driver Airbag with seatbelt pretensioner	-	-	S	-	-
	- Dual Airbags with seatbelt pretensioners	-	-	-	S	S
	- PAB (Passenger Airbag) ON/OFF Switch	-	-	-	S	S
	- Side & Curtain Airbags	-	-	-	-	S
	Fog Lamps - Rear	S	S	S	S	S
	Fog Lamps - Front	-	-	-	S	S
	EXTERIOR	Wraparound Clearlens headlamps & taillamps	S	S	S	S
Chrome finish Radiator Grille		S	S	S	S	S
Roof Antenna		S	S	S	S	S
Body Coloured Bumpers		S	S	S	S	S
Body Coloured Tailgate Handle		S	S	S	S	S
Body Coloured Outside Door Handles		-	S	S	S	S
Body Coloured Outside Mirrors		-	S	S	S	S
Turn indicators on Outside Mirrors		-	-	S	S	S
Full Wheel Covers with 175/70 R14 tyres		S	S	0*	-	-
Alloy Wheels with 185/65 R14 tyres		-	-	S	S	S
Electric Sunroof with slide & tilt functions	-	-	-	-	S	

		Era	Magna	Sportz	Asta	Asta (O) Sunroof
INTERIOR	2 Tone Beige Interior Colour	S	S	S	S	S
	Seat Upholstery - fabric type	Semi	Full	Full	Full	Full
	Blue LED interior illumination	S	S	S	S	S
	Silver finish on Centre fascia & AC vents	S	S	S	S	S
	Chrome finish Inside Door Handles & Locks	S	S	S	S	S
	Theatre dimming central room lamp	S	S	S	S	(Opt. Map Lamp)
	Vanity mirror in Passenger Side sunvisor	S	S	S	S	S
	Front door map pockets	S	S	S	S	S
	Cupholders in floor console	S	S	S	S	S
	Centre Console multi-purpose storage box	S	S	S	S	S
	Passenger Side Seat Back Pocket	S	S	S	S	S
	Coat Hook	S	S	S	S	S
	Luggage hooks (2 nos. in trunk)	S	S	S	S	S
	Rear Parcel Tray	-	S	S	S	S
	COMFORT & CONVENIENCE	Air Conditioner with Heater	Manual	FATC	FATC	FATC
AC vents with shut off option (front)		S	S	S	S	S
Power Steering - Electronic (MDPS)		S	S	S	S	S
Clutch Footrest		S	S	S	S	S
Power outlet (12V)		S	S	S	S	S
Power Windows - Front		S	S	S	S	S
- Rear (with child lock)		-	S	S	S	S
- Driver Autodown & Safety		-	S	S	S	S
- Illuminated switches		-	S	S	S	S
Tilt & Telescopic Steering		-	S	S	S	S
Glove Box Cooling	-	S	S	S	S	
Rear Defogger with timer	-	S	S	S	S	

		Era	Magna	Sportz	Asta	Asta (O) Sunroof
COMFORT & CONVENIENCE	Luggage Lamp	-	S	S	S	S
	Outside Mirrors - Internally Adjustable	S	S	-	-	-
	- Electrically Adjustable	-	-	S	S	S
	- Electrically Foldable	-	-	S	S	S
	Rear Seat - Bench folding	S	S	-	-	-
AUDIO	- 60:40 Split with Flat folding facility	-	-	S	S	S
	Adjustable Headrests - Front	S	S	S	S	S
	- Rear	-	-	S	S	S
	Rear Wiper & Washer	-	-	-	S	S
	Height Adjustable Driver Seat	-	-	-	S	S
	4 Speakers & 2 Front tweeters	S	S	S	S	S
	In-dash 2 DIN MP3 Music System	-	S	S	S	S
	Audio Inputs - Auxiliary & USB	-	S	S	S	S
	Steering mounted Audio controls	-	-	S	S	S
	AVN (Audio-Visual-Navigation) system	-	-	-	0	-
INSTRUMENT PANEL & CENTRE FASCIA DISPLAY	Tachometer	S	S	S	S	S
	Dual Tripmeter	S	S	S	S	S
	Manual Gear-Shift indicator (except AT)	S	S	S	S	S
	Low Fuel Warning lamp	S	S	S	S	S
	Door & Tailgate Ajar Warning lamps	S	S	S	S	S
	Electronic Multidisplay Meter					
	- Digital Clock	S	S	S	S	S
	- Audio display	-	S	S	S	S
	- Dual Tripmeter	-	S	S	S	S
	- Driving Time	-	S	S	S	S
- Calendar (Date)	-	S	S	S	S	
- Outside Temperature	-	S	S	S	S	
Passenger Airbag On/ Off display	-	-	-	S	S	
Seat Belt Warning - Driver	S	S	S	S	S	
Seat Belt Warning - 4 Occupant seats	-	-	-	S	S	

*Optim available in 1.2 Petrol only

KEY TECHNICAL SPECIFICATIONS

TYPE	1.2 Kappa-Petrol	1.4 CRDi Diesel	1.4 Gamma-Petrol	
DIMENSIONS	Overall Length (mm)	3,940		
	Overall Width (mm)	1,710		
	Overall Height (mm)	1,505		
	Wheelbase (mm)	2,525		
	Ground Clearance	165		
	Front Track	1,505		
	Rear Track	1,503		
	Fuel Tank Capacity (L)	45		
ENGINE	No. of cylinders	4		
	No. of valves	16		
	Valvetrain (type)	DOHC	DOHC	DOHC
	Displacement cc	1,197	1,396	1,396
	Maximum Power ps/rpm	80/5,200	90/4,000	100/5,500
	Maximum Torque Kgm/rpm	11.4/4,000	22.4/1,750-2,750	13.9/4,200
TRANSMISSION	5-speed M/T	6-speed M/T	4 Speed AT	
SUSPENSION	Front Suspension	Mc Pherson Strut with Gas shock absorber		
	Rear Suspension	Couple Torsion Beam Axle with Gas shock absorber		
	Rear Shock Absorbers	Gas-filled, Telescopic Dual acting type		
BRAKES	Front	Disc	Disc	Disc
	Rear	Drum	Drum/Disc(ABS)	Disc
TYRE	Tubeless tyres	175/70 R14	175/70 R14	185/65 R14
		185/65 R14	185/65 R14	

BODY COLOURS



* Some of the equipments illustrated or described in this leaflet may not be supplied as standard equipment and may be available at extra cost.
 * Hyundai Motor India reserves the right to change specifications and equipment without prior notice.
 * The colour plates shown may vary slightly from the actual colours due to the limitations of the printing process.
 * Please consult your dealer for full information and availability on colours and trim.

HYUNDAI MOTOR INDIA LTD

5th-6th Floor,
 Corporate One - Baani Building,
 Plot No.-5, Commercial Centre,
 Jasola, New Delhi-110076
 E-mail: hmidelhi@nde.vsnl.net.in

Tel: 011 - 66022000
 Fax: 011 - 66022201 - 02

www.hyundai.co.in

Dealer's Name and Address: