

RX

RX450h





RX	» P4
RX CONCEPT	» P25
DESIGN	» P29
PERFORMANCE	» P33
FEATURES	» P39
SAFETY	» P45
F SPORT	» P47
COLOURS	» P52
SPECIFICATIONS	» P65
FEATURES	» P66
TAKUMI	» P69
ENVIRONMENT	» P71





Your life is a pursuit of new experiences, new flavours, and new things to treasure. It's your journey. Your story. And only you can make it different from the rest. You need a car as unique as you. A car that's luxurious yet brings forward a new passion for life. The new Lexus RX.





You inhale life, with all its colours and flavours. You exhale with relief, because you know there's so much more of it to find. Your journey goes on, driven forward by a masterpiece of craftsmanship. A luxurious car, unlike any other.







Individuality is priceless, because it's rare. But you are the driver. You choose where you live. You choose how you live. And you choose what you drive. When others take the expected roads in life, you choose your own.



The ride is exciting. Exhilarating. You're in your RX, and you can't wait for what comes next. The power of the RX fuels your curiosity, and makes it a pleasure to discover the world.









Each thing you love tells more about who you are. Your love of life. Your appreciation of unique experiences. Your journey continues, as you write your story. And you can make it unlike any other, with the new generation of luxury - The Lexus RX.





Discover the story of

L E X U S

R X



LUXURY REDEFINED



RX Concept

Luxury is no longer confined to being understated and elegant.

Welcome to the new RX. A bold, exciting and sophisticated transformation of what a luxury SUV should be in today's world, in your world.

We didn't just evolve the RX, we re-imagined it, re-engineered it.

And even though it shares the Lexus DNA, it's crafted like none other.

Its awe-inspiring design, plush handcrafted interiors, and an array of advanced technologies, all make for an exhilarating drive that will captivate each of your senses.

And like you, it tells the world that luxury now comes with a new attitude.





LUXURY REDESIGNED

Design

The new RX looks like no other SUV, because it's been designed like no other SUV.

We enveloped the spaciousness of what an SUV should offer with panache. And our design concept of 'seductive strength' can be seen right from the signature spindle grille and large aluminium wheels, to the sleek & sharp cabin silhouette.

With its bold chiselled exterior, striking and luxurious cabin space it isn't just a 4th generation RX, it's a completely new generation of Lexus luxury.

A mere glance will take your breath away. A drive will capture your heart. While your mind will be too busy trying to control the excitement that has never been felt before in an SUV.

RADICAL AND DISTINCTIVE STYLING

EXTERIOR

The bold yet sleek proportions fuse strength with seductiveness, creating a strong visual statement at first glance.



Aggressive front bumper with all-new LED fog lamps



Sharp character lines run from the front fenders to the rear end



Iconic 'floating' roof



Authoritative LED L-shaped taillights

'Seductive Strength' expresses an active and energetic attitude, fusing a powerful presence with a radical outlook.

INTERIOR

The new luxurious cabin with elegant, high-quality trim exudes warmth and class.



Craftsmanship in every detail



Intuitive design for easy use with luxurious elements



Classic LED analogue clock



Aluminium and wood ornamentation exclusive to Lexus



LUXURY RE-ENGINEERED

Performance

The experience of driving a luxury car should not be a topic of muted and plain conversations. It should be thrilling, powerful and an emotional sensation.

And that's exactly what the new RX offers. Once you are behind the wheel, you become one with the car.

Its extended wheelbase and large wheels create an extremely stable platform. The engine mount

and structure reduce vibration and contribute to excellent handling, ensuring that you are always in perfect control.

With a sporty engine that roars and responds to your inputs, and drive modes that let you adjust the RX's performance to suit your mood and driving style, it will come as no surprise that every drive will leave you with lots to talk about. And it won't be in hushed tones.



**TWENTY YEARS OF HYBRID LEADERSHIP, NEARLY
1 MILLION CARS POWERED BY LEXUS HYBRID DRIVE,
AND THAT'S JUST THE BEGINNING.**

Twenty years ago, Lexus engineers recognised the enormous potential of hybrid's seamless blend of petrol and electric power. In 2004, we launched the pioneering RX 400h, the world's first Full Hybrid luxury SUV. With all larger components engineered in house, Lexus Hybrid Drive is an ever-evolving, highly intelligent and flexible drivetrain. Accounting for the vast majority of luxury hybrids on the road, Lexus offers a wide range of hybrid models and will soon deliver the millionth car powered by Lexus Hybrid Drive.

Equipped with the latest third generation Lexus Hybrid Drive, the new RX 450h offers effortless driving and class-leading environmental performance. Capable of driving short distances in zero emissions EV (Electric Vehicle) mode, it recharges on the move, meaning no 'plugging in' concerns or low battery levels to inhibit your freedom. Together with the unique hybrid ownership experience, you'll enjoy substantial financial savings thanks to lower CO₂ emissions, fuel consumption and running costs - along with considerable tax advantages.



01 / Hybrid system

For dynamic driving with exceptional environmental performance, Lexus Hybrid Drive intelligently combines the power of an efficient 3.5-litre gasoline engine with electric power from a high-output motor.

03 / Aerodynamics

Aerodynamics contributes to quiet comfort in the cabin, fuel-efficient performance, and excellent handling stability even during high-speed driving.

02 / 3.5-liter V6 hybrid engine

The 3.5-litre V6 hybrid Atkinson Cycle engine features Dual VVT-iW and advanced D-4S fuel injection system to deliver exciting performance with outstanding drivability, excellent fuel efficiency, and reduced emissions.

04 / Shock absorbers

Careful calibration of each shock absorber component optimises damping force to smooth minor road inputs and absorb larger jolts. All this while maintaining a supple feel for agile handling and excellent ride comfort.

05 / Chassis

The foundation for the RX's exhilarating performance and responsive, sporty handling is a lightweight, highly rigid body structure. It is made from hot-stamp, high-tensile steel and aluminium, with strategically positioned reinforcements using innovative production technologies such as laser screw welding and body adhesives. An optimised engine mount minimises engine movement for quicker engine inertia response against lateral G-forces around corners - contributing to superior handling. It also isolates engine vibration and enhances the comfort of the luxurious ride.

06 / Drive mode select

Drive mode select lets you tune performance to suit your driving style. Equipped with Adaptive Variable Suspension System (AVS), you can select and change between Normal, Eco, Sport S and Sport S+ Modes. In addition, Customise Mode enables drivers to set their preferred settings for the powertrain, AVS, Electric Power Steering (EPS) and air conditioning.

07 / Front and rear suspension

The MacPherson strut front suspension and trailing-arm double wishbone rear suspension contributes a heightened driving pleasure with excellent stability and steering response.

08 / Electric four-wheel drive (E-Four)

E-Four uses a rear motor that operates independently from the front motor to optimise distribution of front and rear drive force. In addition, it features slip and yaw rate feedback controls for excellent vehicle stability in a wide range of driving conditions.



LUXURY REIMAGINED

Features

Craftsmanship has always been the hallmark of the Lexus family. With the new RX, we gave it a bit more of an edge.

We let imagination and ingenuity take shape through metal and glass. Distinctly visible by the sharp and powerful LED headlamps and the signature Lexus arrowhead shaped Daytime Running Lamps.

A large rear spoiler accentuates the flowing design, and further enhances aerodynamics for sporty driving. And our back door responds

to the presence of your palm, opening up even without being touched.

The sophisticated cabin with thoughtful and refined features cocoons you in an island of calm and with the dazzling array of advanced technologies available at your fingertips, you will easily be able to hear your heart beat.

With many more impressive features, the new RX isn't luxury you've known, but one you've always dreamt of.



01 / LED 3 eye projector-type headlamps

The futuristic design of the distinctive 3-eye, energy-efficient L-shaped LED lamps with integrated LED Daytime Running Lamp (DRL) creates a signature Lexus arrowhead-shaped illumination.

03 / LED front fog lamps

LED lamps are integrated into the front bumper to reduce power consumption while providing a bright beam, which contributes to excellent visibility for safe driving in low light and at night.

02 / Sequential LED turn signal lamp

Sequential turn signal lamps are available that illuminate LEDs sequentially from the inner side to the outside of the headlamps when the turn signal or hazard lamp is turned on.

04 / LED rear combination lamps

The LED sequential turn signal lamps illuminate from the inner to the outer side of the lamp to intuitively convey the turn direction. The distinctive L-shaped lamps wrap around the side in deep-set curves, creating a wide signal that projects a strong on-road presence.



05 / Touchless power back door

The power back door automatically opens when a hand is held above the sensor in the Lexus emblem, enabling convenient hands-free opening when your hands are full or the door is wet or dirty.

07 / Door handles

The refined door handle design welcomes you with warm hospitality and the dynamic shape is easy to grip. A brightened silhouette line and integrated foot area illumination on the handles guide you at night, then gently fade.

06 / Rear spoiler

The large rear spoiler integrated into the top of the back door accentuates the flowing design and edgy sporty styling of the RX. It is angled to enhance aerodynamic performance and balance airflow to provide excellent front tire hold.

08 / Panoramic glassroof

The glassroof enhances the feeling of openness and space in the cabin. It opens, closes and tilts up and down, at the touch of a switch in the overhead console.



01 / Multimedia coordination function

This function coordinates the display of information from the multimedia systems on the 12.3-inch Electro Multi-Vision (EMV) display in the center of the instrument panel and the 4.2-inch colour Thin Film Transistor (TFT) multi-information display in the meter cluster. For convenience, audio system information and incoming mobile calls can also be displayed on the multi-information display and controlled using switches on the steering wheel.

02 / Tire pressure alert

When low tire pressure is detected, the multi-information display alerts you of the affected tire with an in-meter warning lamp.

03 / Hybrid system indicator

The meter displays real-time information about the hybrid system's output and regeneration, encouraging you to adopt an eco-friendly drive.



04 / Meters

Subtle touches of luxury is embedded within the design of the meters, thanks to a fusion of the 4-dial analogue meter and a hi-tech digital display. Additionally, the large analogue speedometer and tachometer have three-dimensional meter faces for greater visibility.

05 / S-FLOW control

The S-FLOW control optimises airflow volume through the air-con vents based on the occupants' seating positions to provide comfort and greater energy saving. It also monitors temperature within and around the vehicle.

07 / Overhead console LED lamp switches

Lexus' renowned hospitality extends into the intuitive operation of the front LED dome and map lamps located in the overhead console, activated when you gently run your fingers across the lights.

06 / Remote Touch Interface

A Lexus innovation ergonomically built to give you command of the vehicle's electronics displayed through a 12.3-inch EMV screen - all in the palm of your hands.

08 / Mark Levinson® audio system

Mark Levinson® Premium Surround Sound Systems are tuned to perfection to provide the highest level of accuracy, reliability and enjoyment. The hallmark of each system is an uncanny ability to reproduce subtleties and nuances so that you get pure musical reproduction. With this, you don't just hear sound; you experience the soul of the music in a 360-degree spatial environment.



LUXURY REINFORCED

Safety

With luxury, certain things should come easy, like peace of mind. The new RX, with its integrated approach to safety is sure to put your mind at ease, when you are on the road.

Thin front pillars and careful positioning of the door mirrors offer you excellent visibility. You are further protected by various technologies such as Parking Assist Monitor that checks

your surroundings while getting in and out of parking spaces. RX also features dual stage SRS airbags, helping to keep up the excitement of driving the new RX without any compromises or safety concerns.

It is what modern luxury should accomplish, delivering on both style and substance.

**01 / LED wide-angle cornering lamps**

Compact, bright and energy-efficient, the LED wide-angle cornering lamps provide additional illumination in the direction of travel, to the side and above, enhancing pedestrian visibility when turning at intersections.

02 / Parking Assist Monitor

The parking assist monitor displays parking guide lines on images captured by the back camera, supporting driving in reverse. For a hybrid model, the image begins displaying when the power switch is turned ON and the shift position is changed to R.

03 / SRS airbags

The RX features dual-stage SRS airbags (front seats), SRS knee airbag (driver's seat), SRS cushion airbag (front passenger's seat) that supports seatbelt restraint by lifting the front edge of the seat cushion during a frontal collision, SRS side airbags (front and outboard rear seats) and SRS curtain shield airbags (front and rear door windows).*

* The SRS airbags are supplemental devices to be used with the seatbelts. The driver and all passengers in the vehicle must wear their seatbelts properly at all times. Never install a rear-facing CRS (Child Restraint System) on the front passenger's seat. For a forward-facing CRS, it is recommended you use it in the rear seats. Please do not use accessories for the seats which cover the parts where the SRS side airbags should inflate. Such accessories may prevent the SRS side airbags from activating correctly, causing serious injury (Lexus genuine seat covers

are specifically designed for models equipped with the SRS side airbags. To find out about availability in your area, please inquire at your local dealer). The photo shows all the SRS airbags activated for display purposes only (the SRS side and curtain shield airbags only inflate on the side of the collision in an actual accident). For details on these and other important safety features, be sure to read the Owner's Manual carefully.

F SPORT



BORN AN SUV RAISED BY SPORTS CARS

F Sport

Never before has an SUV had the pedigree to dominate the road. Introducing the exclusive F SPORT package that injects razor-sharp sports performance into the RX driving experience.

Evolved from the first IS F and groundbreaking LFA supercar, Lexus F DNA drives the development of all F SPORT models. You'll recognise it in the signature grille mesh and the metallic-coated lower bumper that visually lowers the car's center of gravity. As you take the wheel, the feeling of sports driving control is compelling and immediate.

The extra support of the seat, dimpled leather steering wheel, custom sports meters that evoke the LFA supercar and G sensor create an authentic sporty driving experience.

F SPORT exhilaration is also created by fine-tuning the front and rear suspension, fitting of Adaptive Variable Suspension (AVS) system and installing front and rear performance dampers that heighten responsiveness and handling stability.



SPORTING EXHILARATION



A/ Front Mesh Grille

Distinctive honeycomb spindle grille conveys a bold and assertive look.

B/ Front Bumper

Unique bumper visually lowers the point of gravity adding to the sporty image.

C/ Door Mirrors

Exclusive outer mirrors to further enhance the aggressive F SPORT image.

D/ Front Fender Emblems

Distinctively placed at the sides of the Lexus F SPORT, the iconic F SPORT emblem is a mark of sportiness within the car.



E/ F SPORT Meters

Expresses dynamic sports performance with full length illuminated needle and precision digital speedometer.

F/ Steering Wheel

Perforated leather steering wheel, with an F SPORT logo at its base.

G/ Aluminum Pedals

Drilled aluminum pedals for better grip and responsiveness.

H/ The Shift Lever Knob

Exclusive shift knob with leather dimpled wrapping further accentuates the sporty impression.

I/ Trim (Metal Film)

The thinly machined metal film is finished with a fine 3D-patterned surface, creating a sophisticated visual depth that adds a subtle sporting aura to the interior.

J/ Scuff Plates

The black Lexus logo inscribed in the scuff plates project an aggressive image of sports performance.

F SPORT



01/ Sound generator

Heightening the emotion and excitement of sports driving, the sound generator boosts the sound pressure level in the engine air intake at different resonate frequencies, to generate a thrilling F SPORT engine note when you accelerate.

02/ F SPORT front seats

The front sports seats are the product of an innovative 'integrated foaming' manufacturing process. They provide a blend of refined comfort with firm support and excellent holding performance for sports driving.

03/ F SPORT meters

Dynamically displaying sports performance, the exclusive F SPORT analogue tachometer features a large silver ring with an illuminated needle, and a precision digital speedometer and shift position/drive mode select indicators in the center.

04/ F SPORT multi-information display

The 8-inch colour Thin Film Transistor (TFT) multi-information display heightens the immediacy of your F SPORT driving experience by displaying a G sensor with steering angle, and accelerator opening and brake hydraulic pressure bars.



EXTERIOR & INTERIOR
COLOURS

A palette of colours, from bold and luminous to nuanced and sophisticated, lets you express your individuality



White Nova Glass Flake (083) <F Sport>



Sonic Quartz (085) <Luxury>



Mercury Gray Mica (1H9) <Luxury & F Sport>



Platinum Silver Metallic (1J4) <Luxury & F Sport>



Sonic Titanium (1J7) <Luxury & F Sport>



Black (212) <Luxury & F Sport>



Sleek Ecru Metallic (4U7) <Luxury>



Graphite Black Glass Flake (223) <Luxury & F Sport>



Amber Crystal Shine (4X2) <Luxury>



Red Mica Crystal Shine (3R1) <Luxury & F Sport>



Heat Blue Contrast Layer (8X1) <F Sport>

<LUXURY PACKAGE>
<SEMI-ANILINE LEATHER>



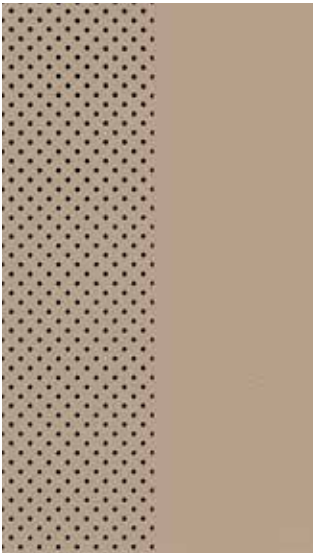
Deep Blue Mica (8X5) <Luxury & F Sport>



18-inch Aluminum Wheel
(Luxury & F Sport Package)



Ivory

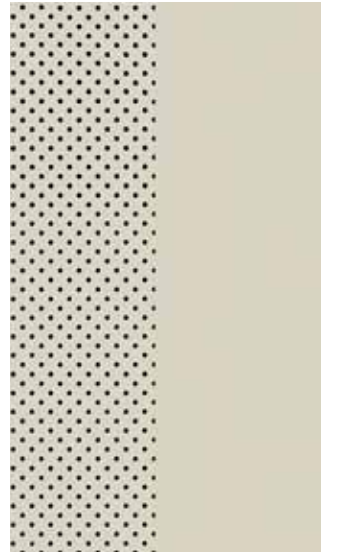


Black





Noble Brown



Rich Cream



Topaz Brown

<F SPORT PACKAGE>
<SMOOTH LEATHER>



White

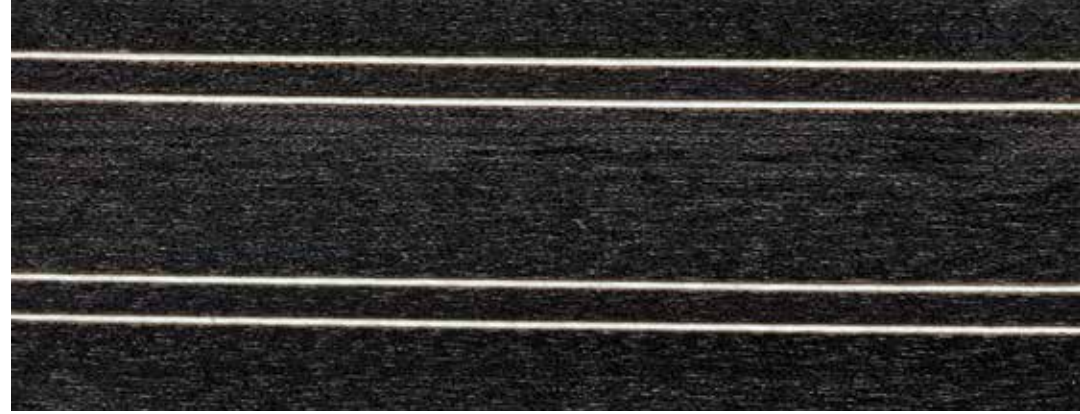


Dark Rose



Black

<TRIM>



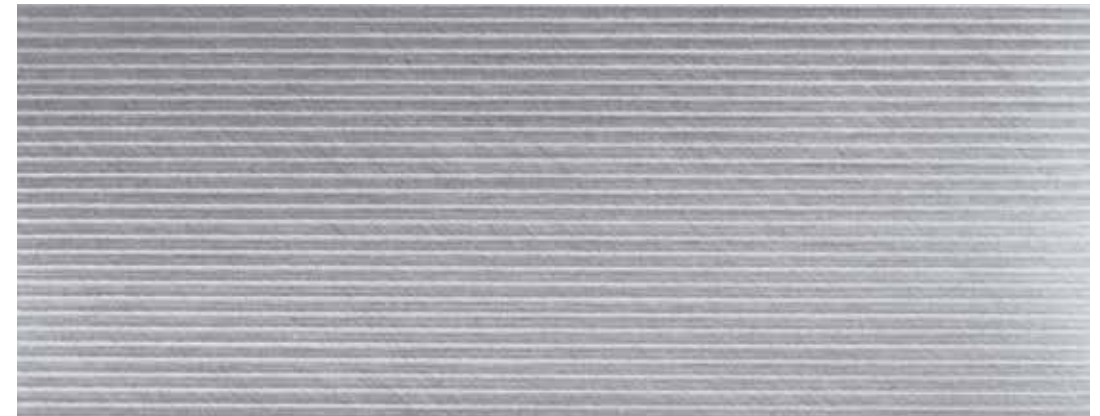
Aluminium & Wood <Luxury>



Walnut <Luxury>



Shimamoku <Luxury>



Aluminium <F Sport>



Bamboo <Luxury>

RX Colour Combinations

LUXURY		Leather					
Code	Exterior	Ornament	Ivory	Black	Noble Brown	Topaz Brown	Rich Cream
085	SONIC QUARTZ	ALUMINIUM & WOOD	○	○	●	○	○
		SHIMAMOKU	○	○	○	●	○
		BAMBOO	○	○	×	○	×
		WALNUT	○	○	○	○	○
1H9	MERCURY GRAY MC.	ALUMINIUM & WOOD	○	○	○	○	○
		SHIMAMOKU	○	○	○	●	○
		BAMBOO	○	○	×	○	×
		WALNUT	○	○	○	○	○
1J4	PLATINUM SILVER ME.	ALUMINIUM & WOOD	○	○	○	○	○
		SHIMAMOKU	○	○	○	○	○
		BAMBOO	○	○	×	○	×
		WALNUT	○	○	○	○	○
1J7	SONIC TITANIUM	ALUMINIUM & WOOD	○	○	●	○	○
		SHIMAMOKU	○	○	○	●	○
		BAMBOO	○	○	×	○	×
		WALNUT	○	○	○	○	○
2J2	BLACK	ALUMINIUM & WOOD	○	○	○	○	○
		SHIMAMOKU	○	○	○	○	○
		BAMBOO	○	○	×	○	×
		WALNUT	○	○	○	○	○
2J3	GRAPHITE BLACK GF.	ALUMINIUM & WOOD	○	○	○	○	○
		SHIMAMOKU	○	○	○	○	○
		BAMBOO	○	○	×	○	×
		WALNUT	○	○	○	○	○
3R1	RED MICA CS.	ALUMINIUM & WOOD	○	○	○	○	○
		SHIMAMOKU	○	○	○	○	○
		BAMBOO	○	○	×	○	×
		WALNUT	○	○	○	○	○
4U7	SLEEK ECRU ME.	ALUMINIUM & WOOD	○	○	○	○	○
		SHIMAMOKU	○	○	○	○	○
		BAMBOO	○	○	×	○	×
		WALNUT	○	○	○	○	○
4X2	AMBER CS.	ALUMINIUM & WOOD	○	○	○	○	○
		SHIMAMOKU	○	○	○	○	○
		BAMBOO	○	○	×	○	×
		WALNUT	○	○	○	○	○
8X5	DEEP BLUE MC.	ALUMINIUM & WOOD	○	○	○	○	○
		SHIMAMOKU	○	○	○	○	○
		BAMBOO	○	○	×	○	×
		WALNUT	○	○	○	○	○

F SPORT		Leather			
Code	Exterior	Ornament	F Sport White	F Sport Black	Dark Rose
083	WHITE NOVA GF.	ALUMINIUM	○	●	●
1H9	MERCURY GRAY MC.		○	○	●
1J4	PLATINUM SILVER ME.		○	○	○
1J7	SONIC TITANIUM		○	○	●
2J2	BLACK		○	○	○
2J3	GRAPHITE BLACK GF.		○	○	○
3R1	RED MICA CS.		○	○	○
8X1	HEAT BLUE CL.		○	○	○
8X5	DEEP BLUE MC.		○	○	○

● Standard Variants ○ Order Based Variants × Not Available

SPECIFICATIONS <RX450h>

	LUXURY	F SPORT	
DIMENSION & WEIGHT	Overall L x W x H (mm)	4890 x 1895 x 1685	
	Wheelbase (mm)	2790	
	Tread Front / Rear (mm)	1640 / 1630	
	Overhang Front / Rear (mm)	1080 / 1020	
	Minimum Turning Radius (m)	5.9	
	Ground Clearance (mm)	195	
	Fuel Tank Capacity (L)	65	
	Seating Capacity	5 Seater	
	Max Kerb Weight (Kg)	2100-2210	
	Gross Weight (Kg)	2715	
ENGINE	Type	2 GR FXS Euro 6 with OBD	
	Displacement (L)	3.5	
	Max Output	193kW @ 6000 rpm	
	Max Torque	335Nm @ 4600 rpm	
PERFORMANCE	Acceleration (0 - 100 kmph in seconds)	7.7	
	Fuel Efficiency* (kmpl)	18.8	
MOTOR GENERATOR	Type	Permanent Magnet Synchronous Motor	
	Max Output	123 kW	
	Max Torque	335 Nm	
HYBRID BATTERY	Type	Ni-MH	
	Nominal Voltage	288 V	
	Number of Cells	240	
	System Voltage	650 V	
HYBRID SYSTEM	Total Max Output	230 kW	
	EV Mode	●	
CHASSIS & TRANSMISSION	Suspension Front / Rear (with Stabilizer)	MacPherson Struts / Double Wishbone Suspension	
	Brake Front / Rear	Ventilated Disc Brake with Floating Caliper 2-Cylinder / 1-Cylinder	
	Tire	235/65R18	
	Transmission	E-CVT	
EXTERIOR FEATURES	LED Headlamp with Auto Levelling and Headlamp Cleaner	●	●
	LED Clearance & Cornering Lamp	●	●
	Front Turn Signal Lamp with LED Sequential	●	●
	Front Fog & Driving Lamp with LED	●	●
	Light Control System	●	●
	Daytime Running Light System	●	●
	Rear Combination Lamp - LED Sequential	●	●
	High Mount Stop Lamp	●	●
	Rear Fog Lamp - LED	●	●
	Side Turn Signal Lamp (LED on Outer Side)	●	●
	Outside Rear View Mirror (Auto, Heater, EC, Memory)	●	●
	Front Bumper / Rear Bumper	Normal	F Sport
	Radiator Grille	Normal	F Sport
	Panoramic Roof Outer Slide with Jam Protect	●	●

*WVTA Figure ● Available × Not Available

INTERIOR FEATURES	LUXURY	F SPORT
Accelerator Pedal	Organ Type	Organ Type (Aluminium)
Shift Lever & Knob	Leather	F Sport
Brake Pedals	Pendant Type	Pendant Type (Aluminium)
Inside Rear View Mirror (Day / Night EC)	●	●
Door Trim	Wood with Illumination	Aluminium with Illumination
Door Scuff Plate	Front / Rear + Front Illuminated LED	Front / Rear F Sport
Front Seat	Luxury Type	F Sport Type
Rear Seat (4-2-4) Folding Electric	●	●
Seat Cover Material	Semi Aniline Leather	F Sport Smooth Leather
Front Seat Headrest with Up & Down Adjustment	●	●
Rear Seat Headrest with Up & Down Adjustment	●	●
Power (D+P) Front Seat Slide (260 mm)	●	●
Seat Lumbar Support (D+P)	4 Way	2 Way
Seat Heater for Front / Rear	●	●
Seat Back Pocket (Front Seat only)	●	●
Front Seat Adjuster	Power 10 way (D+P) + Memory (D+P)	Power 8 way (D+P) + Memory (D)
Seat A/C (D+P Ventilate only)	●	●
Multi Information Display (4.2 Inch Colour TFT)	●	●
COMFORT & CONVENIENCE		
Wireless Door Lock (Smart Entry)	●	●
Power Back Door with Emblem Sensor	●	●
Fuel Lid Release Electric Type	●	●
Key Plate - Zippo Type + Card	●	●
Cruise Control	●	●
Drive Mode Select	Eco, Normal, Sports & Sports+	Eco, Normal, Sports & Sports+
Steering Column (EPS Tilt & Telescopic)	●	●
Steering Wheel	Wood with Heater	F Sport with Heater & Paddle Shift
AVS (TEMS)	●	●
Rain Sensing Intermittent Wipers	●	●
Rear Window Wiper - Single Intermittent	●	●
Air Conditioner - Auto Recirculation	●	●
Air Conditioner - Auto Dual Controlled	●	●
Minus Ion Generator (nanoe™)	●	●
Electro Multi Vision Display	●	●
Audio - Mark Levinson with 15 Speaker & Sub-woofer	●	●
Clearance & Back Sonar	●	●
Back Guide Monitor	●	●
SAFETY & SECURITY		
Anti Theft System (Break-in Sensor, Glass Break Sensor & Tilt Sensor)	●	●
ABS	●	●
Vehicle Stability Control (with Cut Off Switch)	●	●
Hill Start Assist	●	●
Vehicle Dynamic Management (With VDIM Alpha)	●	●
Power Door Lock (Auto Speed)	●	●
Front Seat Belt - 3 Point ELR (Emergency Locking Retraction) + TR (Tension Reducer); Pretensioner & Force Limiter	●	●
Rear Seat Belt - All Seats 3 Point ELR (Emergency Locking Retraction); Outside Seat - Pretensioner & Force Limiter	●	●
ISOFIX and Top Tether Anchor for Child Seat	●	●
10 Airbags (Front Driver & Passenger, Driver Knee, Front Passenger Cushion, Front Side, Rear Side & Curtain Shield Airbags)	●	●
Hazard Warning Indicators	●	●
Front Fog Lamp Indicator	●	●
Engine Oil Monitor Indicator	●	●
Head Up Display	●	●
Seat Belt Warning (Lamp Front / Rear and Buzzer Front)	●	●
Door Ajar Warning / Light Remind Warning / Key Remind Warning	●	●
Tire Inflation Pressure Warning	●	●

● Available × Not Available



Note: Vehicles illustrated, specifications and equipment detailed in this specification sheet may vary. Lexus reserves the right to alter any details of specifications and equipment without notice. Please consult your Lexus Brand Specialist for details.



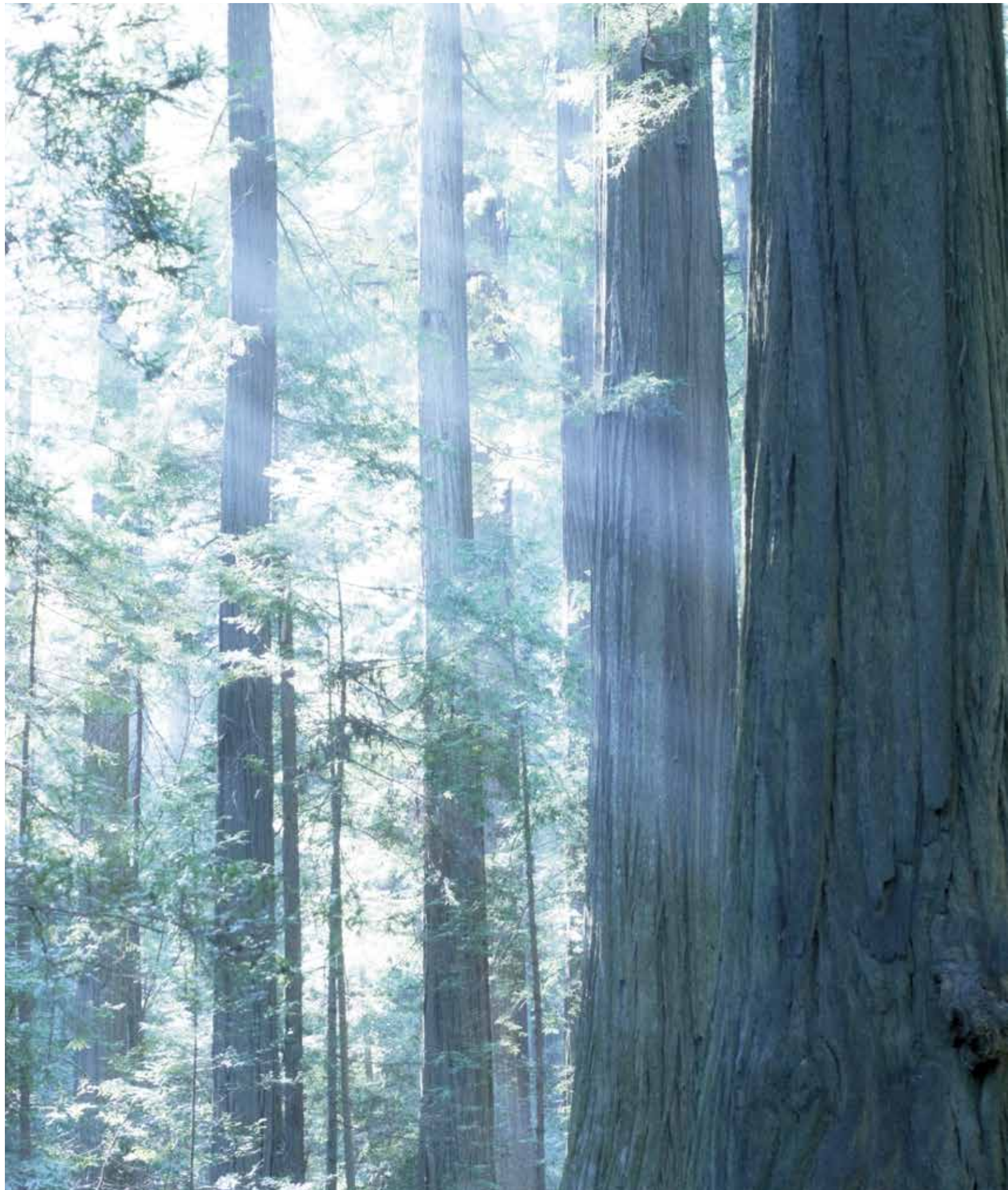
LEXUS
TAKUMI

The Lexus pursuit of perfection finds its finest expression in the master craftsmanship of the Takumi.



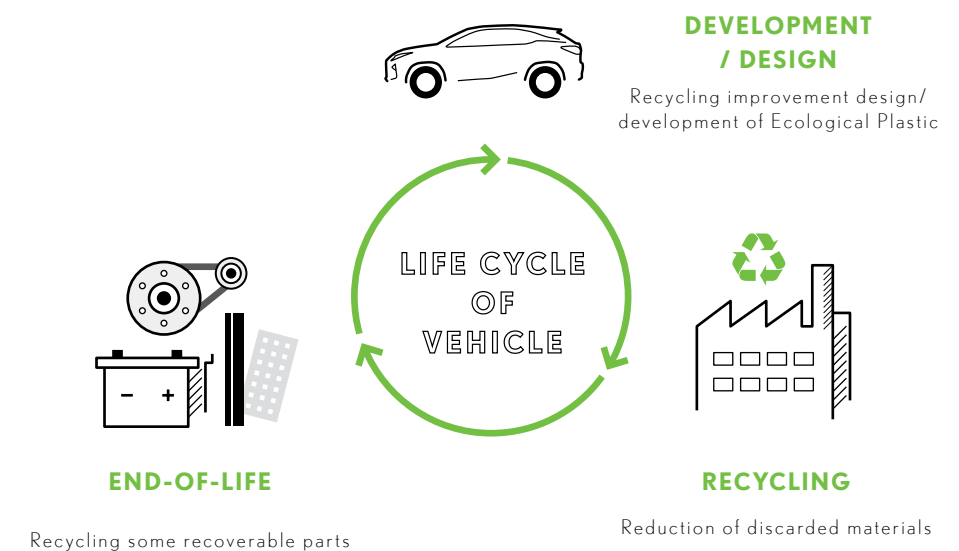
Every Lexus is based on an uncompromising approach to creating premium automobiles. Inspired by our 'Yet' philosophy, we seek innovation in every facet of engineering through a sophisticated fusion of seemingly incompatible ideas such as 'high performance yet high fuel efficiency'. In addition, unique Lexus styling is born of our L-finesse design language, a fine balance of 'Leading-edge' and 'finesse', which ensures every Lexus is not only captivating and luxurious but also highly refined. Finally, every new Lexus model is also measured against a set of internal standards covering design, performance, specifications and equipment, to ensure it is distinctive and worthy of the Lexus emblem.

This pursuit of perfection is evident at every stage of the manufacturing process. Every Lexus vehicle is created with a masterful skill and attention to detail inspired by both traditional artisanship and state-of-the-art engineering. For example, at the Tahara plant in Japan, precision components made using leading-edge digital technology are assembled and finished by master craftsmen called Takumi, whose technical expertise and sure senses are honed by decades of rigorous experience.



LEXUS
ENVIRONMENT

*Our commitment to the environment
is embedded into all our activities
and vehicles.*



At Lexus, sustainability is an enormous challenge that we gladly accept. We are committed to finding better, more efficient ways to contribute to a healthier planet, leading the industry in better business practices. Our focus on the environment drove our development and global leadership of hybrid luxury vehicles and the knowledge we have gained is applied in all of our vehicles. Our commitment to recovering, recycling and re-using permeates the entire company. To reduce waste to a minimum, we carefully recycle various materials in our offices, factories and sales facilities, reducing CO₂ levels beyond our achievements on the road.

Specific initiatives to enhance the environment include integrating a keen environment-friendly focus on the entire life cycle of each vehicle, from design and production through to the recycling of vehicles at the end-of-life. To reduce CO₂ emissions, at the design stage we specify extensive use of plant-derived plastics for components, instead of petroleum-derived plastics. During production, we make repeated use of reusable items, work hard to efficiently use resources to minimize waste and recycle any waste produced.

