



---

**THE FASTEST WAY TO A  
SUSTAINABLE FUTURE**

---

**PRIUS**

An aerial photograph of a winding road cutting through a vast, dense green forest. The road is a light brown color and curves through the lush green canopy. A few small vehicles are visible on the road. The forest is thick and vibrant green, filling most of the frame.

## PAVING THE ROADS TO A BETTER, FASTER AND THRILLING TOMORROW.

Toyota has always been the leader in the production of hybrid vehicles. Having sold more than 9 million cars worldwide, Toyota's Hybrid Synergy Drive® is undeniably the world's leading hybrid technology.

This smart technology blends the best of petrol engines and electric motors for maximum efficiency & minimal emission. Being the pioneers of hybrid technology, Toyota plans to lead the hybrid revolution into the future.

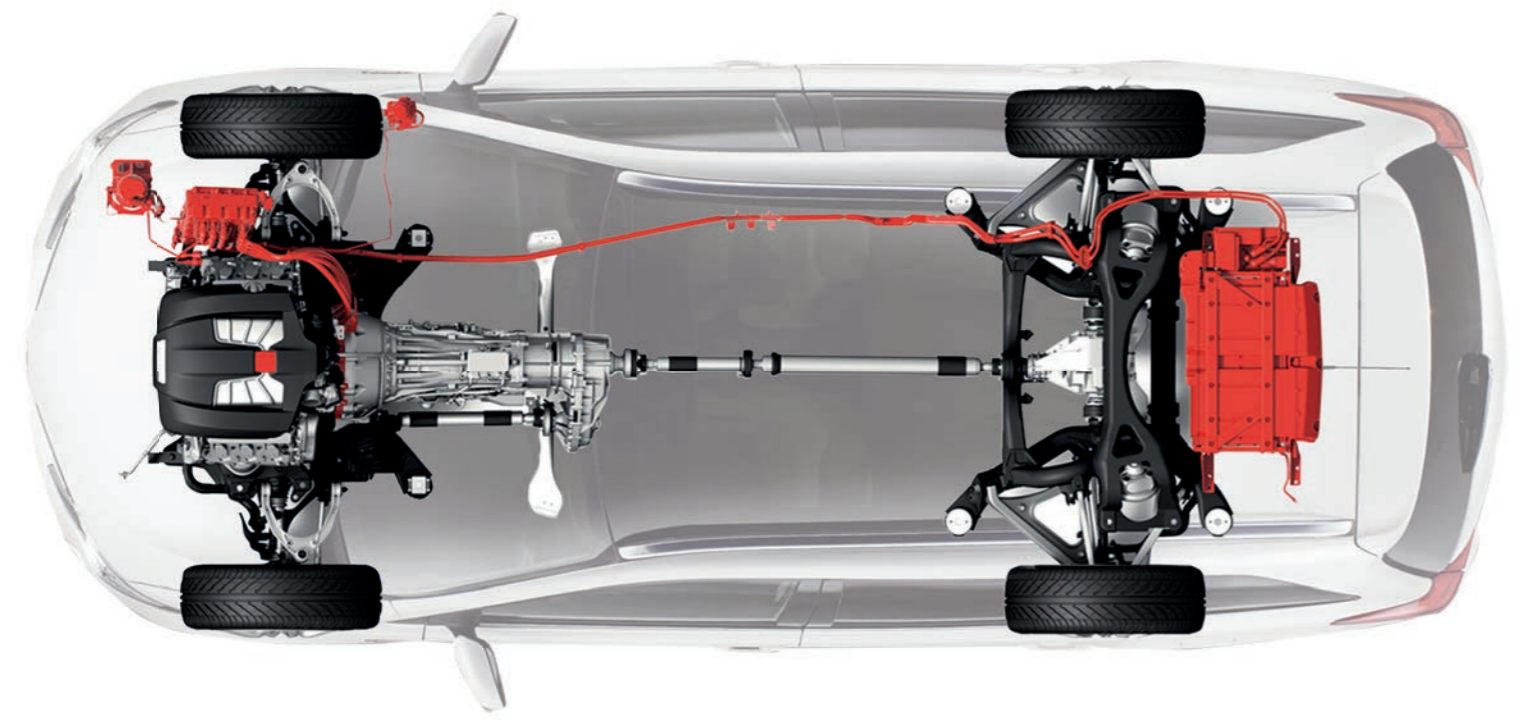
**TOYOTA** HYBRID

**POWER**

Hybrid cars are known to be more powerful than their conventional counterparts. The engine switches to different power sources for different terrains to give you the optimum output.

**EFFICIENCY**

By effortlessly switching between engine and motor, hybrid cars ensure maximum efficiency per mile. It doesn't just enhance fuel efficiency, it also ensures that your car's engine has a healthy and long life.



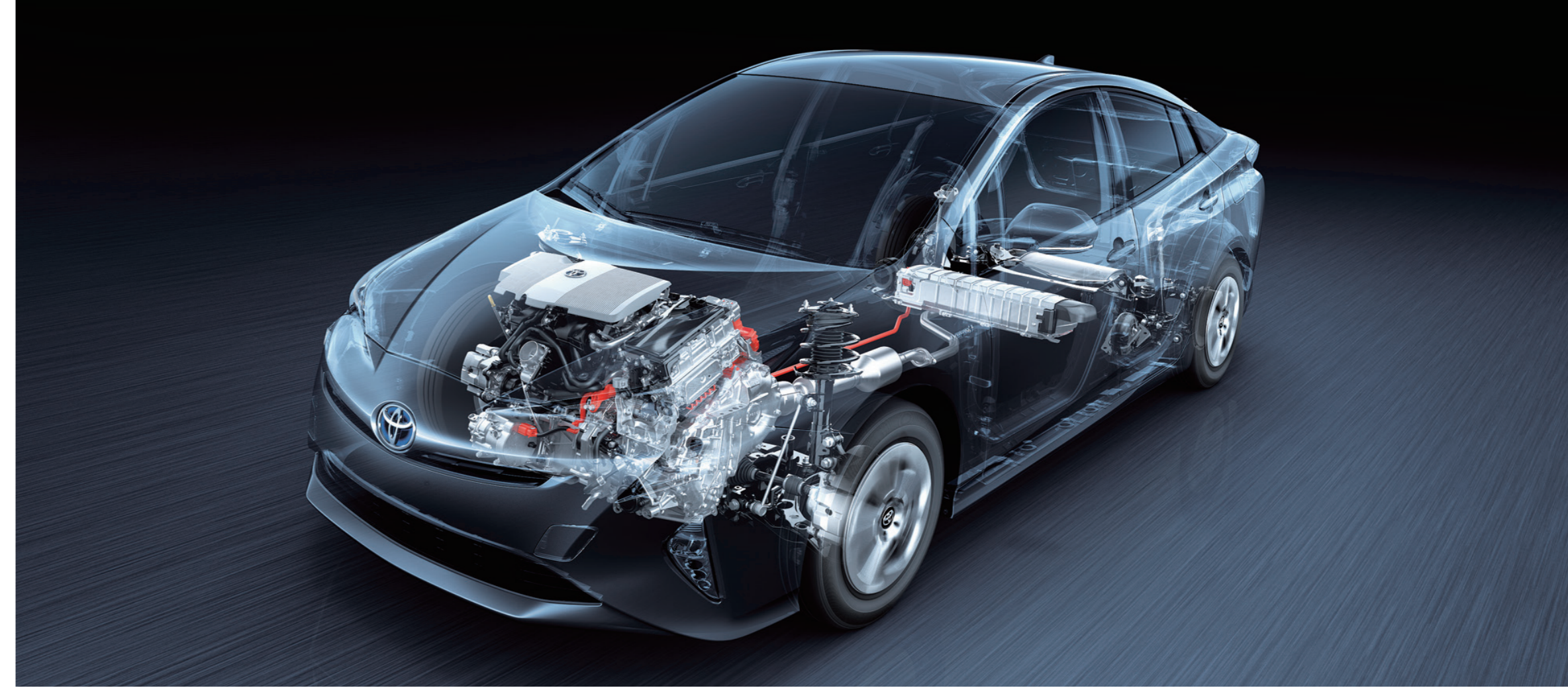
**PERFORMANCE**

The hybrid cars deliver superior performance as expected from luxury and performance vehicles. Take the Prius for example, powered by 1.8 litre engine delivers superior torque to make driving a pleasure.

**CONSERVATION**

The engine switches to electric motor even when idling to minimise CO<sub>2</sub> emissions. The hybrid is the fastest way to move into a sustainable future.

The visual shown here is for representation only. The actual mechanism may vary depending on models and regions.



## DUAL POWER TO MAXIMISE A GREAT DRIVING EXPERIENCE

With two power sources working in efficient tandem, Toyota hybrid cars ensure a superlative driving experience. Irrespective of the weather and driving conditions, the hybrid system works intelligently to switch between these sources.

# WHAT A TRUE HYBRID DOES AND DOES NOT?



## HYBRID CARS ARE MORE POWERFUL THAN CONVENTIONAL CARS

Hybrid Synergy Drive® senses when the engine requires more power and turns on the electric motor for support. Hence, the wheels get power from two sources simultaneously which is far more than what a petrol engine alone would deliver.



## LESS CO<sub>2</sub> EMISSIONS MEAN CONTRIBUTING RESPONSIBLY TO THE ENVIRONMENT

Return the love nature gives you while driving in ECO mode. Powered by the most advanced and eco-friendly technology, Toyota hybrid vehicles generate lesser CO<sub>2</sub> emissions compared to other conventional cars. In EV mode, the car runs only on an electric motor.



## EXTREMELY SAFE TO DRIVE, EVEN IN MONSOONS

The battery pack and high voltage electric circuits in Toyota hybrid cars are completely sealed and protected against accidental contact with moisture. Driving a hybrid car is as safe as driving any other car, even in the rain.



## COST OF MAINTENANCE AS MUCH AS ANY OTHER CAR

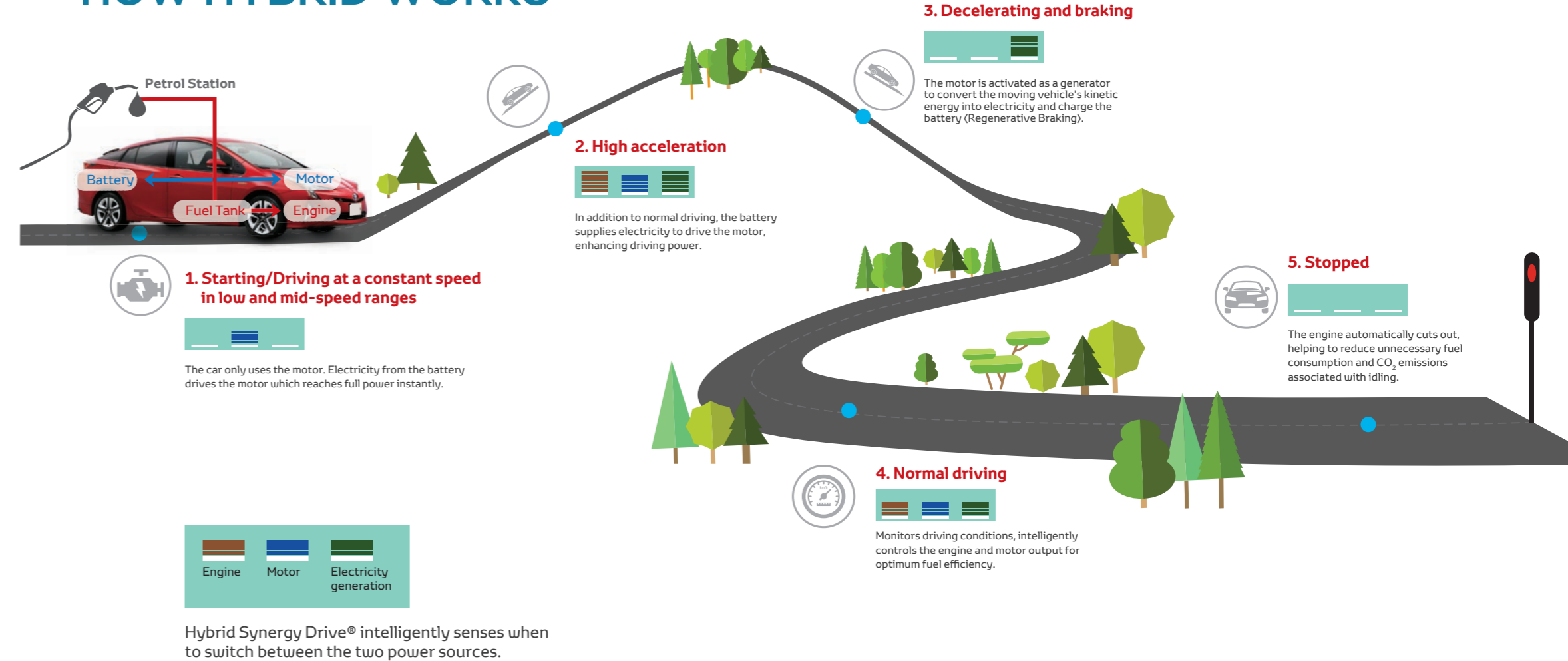
The battery pack and electric motor assembly in Toyota hybrid cars do not require frequent service and so are quite convenient to maintain. The cost of maintaining a hybrid car is almost the same as any other car, or even lesser.



## NO NEED TO PLUG IN FOR CHARGING

Toyota hybrid cars automatically charge their batteries while driving using Regenerative Braking technology. The heat energy generated as friction during braking is used to charge the battery, which in turn powers the electric motor. This ensures that plugging in for charging is never required.

# HOW HYBRID WORKS



LEADING INTO A FUTURE WITH PASSION,  
POISE AND PERFORMANCE.



Featured Colour: Emotional Red

# PRIUS

**THE PIONEER, THE LEADER, THE CULT, MOST  
IMPORTANTLY A SHEER JOY TO DRIVE.**

When you are driving a Prius, you find yourself at the gates of the future. The Hybrid Synergy Drive® (HSD) efficiently recycles energy, producing maximum output with minimum emissions. Backed by a host of features like the double-wishbone rear suspension, 7 inch DLX with DVD display audio, seat heater, tilt and telescopic steering and many others, this is a delight to drive. The edgy styling and sporty lines ensure that the leader turns heads wherever it treads.



Featured Colour: Dark Blue Mica Metallic



- 1 DRIVE MODE SWITCH**  
Switch between Normal, Eco, Power and EV modes to suit your driving style.
- 2 CONTROLS ON STEERING WHEEL**  
Multi-dimensional switches at the steering wheel mean you never have to take your hands off the steering wheel.
- 3 COLOUR HEAD-UP DISPLAY (HUD)**  
The available colour Head-Up Display (HUD) uses aircraft-inspired technology to project important information right on the windshield. This full-colour display can show your speed, hybrid system indicator info and give turn-by-turn directions.

1

2

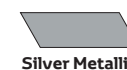
3

# PRIUS - SPECIFICATIONS

DIMENSIONS & WEIGHT	
Overall (L x W x H)	4.540 m X 1.760 m X 1.490 m
Wheel Base	2.700 m
Min. Turning Radius	5.1 m
Fuel Tank Capacity	43 l
Seating Capacity	5-Seater
Gross Vehicle Weight	1790 kg
ENGINE	
Type	2ZR-FXE, 4-Cylinder, In-Line
Displacement	1798 cm <sup>3</sup> (cc)
Fuel Type	Petrol (Hybrid)
Max. Output	72 kW (97.89 PS) @ 5200 rpm
Max. Torque	142 Nm (14.48 kg-m) @ 3600 rpm
Emission	Bharat Stage-IV
MOTOR GENERATOR	
Type	Permanent Magnet Synchronous Motor
Max. Output	53 kW (72 PS)
Max. Torque	163 Nm (16.62 kg-m)
HYBRID BATTERY	
Type	Nickel Metal Hydride
Voltage (Nominal)	201.6 V
Number of Modules	28
Battery Capacity	6.5 Ah
HYBRID SYSTEM	
Total System Output	90 kW (122PS)
Drive Mode	Drive (Normal, Eco, Power) & EV mode
CHASSIS & TRANSMISSION	
Suspension Front / Rear	Front: MacPherson Strut; Rear: Double Wishbone
Stabilizer Bar	Front & Rear: Torsion Bar
Brake Front / Rear	Ventilated Disc / Solid Disc
Tyres	195 / 65 R15
Transmission	CVT
Drive Type	Front
EXTERIOR FEATURES	
	<b>Grade (Z8)</b>
LED Headlamps	✓
Front Fog Lamp with Daytime Running Light	✓
195/65 R15 Alloy Wheel	✓
Outside Door Handles	Color
INTERIOR FEATURES	
	<b>Grade (Z8)</b>
Leather / Fabric Mid Seats	With Leather
Inside Chrome Door Handles	✓
Illuminated Entry (Room Lamp + Personal Lamp + Step Lamp)	✓
Key Remind / Light Remind / Speed Warning	✓
12 V DC Power Outlet (Front + Rear)	✓

INTERIOR FEATURES		<b>Grade (Z8)</b>
Shift Position Indicator		✓
Eco Driving Indicator (Eco-Lamp & HV-Indicator)		✓
Assist Grip / Coat Hook / Door Scuff Plate		✓
Front Personal Lamp + Door Courtesy Lamp (Front)		✓
Tilt & Telescopic Steering		✓
COMFORT & CONVENIENCE		<b>Grade (Z8)</b>
Touchscreen Display Audio with DVD, AM/FM, CD, MP3, USB, Aux-in, Bluetooth		✓
10 No. JBL Speakers		✓
Pitch and Bounce Control		✓
Headlamps with Auto Levelling		✓
Follow Me Home Headlamp		✓
Seat Heater (Driver + Passenger)		✓
Leather Seats & Steering Wheel		✓
Controls on Steering Wheel - Operation (MID + Audio + Trip + Telephone)		✓
Back Monitor		✓
Cruise Control		✓
Driver - 6 Way / Passenger - 4 Way with Driver Side Power Lumbar		✓
Head-Up Display		✓
Wireless Charger		✓
Rain Sensing Wipers		✓
Dual Auto AC		✓
Fin Antenna		✓
Outside Rear View Mirror with Electric Adjust + Retract + Turn Signal Indicator + Heater		✓
Auto Dimming Inside Rear View Mirror		✓
Smart Entry (Driver + Passenger + Back Door) with Push Start System		✓
SAFETY & SECURITY		<b>Grade (Z8)</b>
7 Airbags (Driver + Passenger + Front Side + Curtain + Driver Knee Airbag)		✓
Seat Belt Warning (Driver, Passenger & Rear)		✓
ABS + BA + EBD + VSC + Traction Control		✓
Immobilizer		✓
Front and Rear Seat Belt		3 Point ELR with Pre-tensioner & Force Limiter
Rear Seat Child Restraint System		ISOFIX-2 with Rear Tether Anchor
Rear Fog Lamp		✓

## AVAILABLE COLOURS



# TOYOTA HYBRID



**UNMATCHED WARRANTY\***  
3 years / 1,00,000kms  
\*Conditions Apply

You can Talk to Toyota at 1800-425-0001 (BSNL/MNTL Toll Free No.) or +91-80-66293001 (Direct No.) or visit [www.toyotabharat.com](http://www.toyotabharat.com)

Note: Vehicles picture and specifications detailed in this brochure may vary between models and equipments. Addition of extra features may change figures in this chart. Toyota Kirloskar Motor Pvt. Ltd. reserves the right to alter any details of specifications and equipment without notice. Actual colour of vehicle body & upholstery might differ slightly from the images depicted in this brochure. Features are variant specific.