

nismo

NISSAN GT-R NISMO GT3



GT3

NISSAN **nismo**

NISSAN GT-R NISMO GT3
Customer Racing

NISSAN GT-R NISMO GT3

History

Legends evolve amid races.

As the Nissan GT-R is based on the concept of "pursuing the ultimate driving pleasure," it is inseparable from motor sports. By competing in prestigious international competitions, the refined technology and driving presence of the Nissan GT-R has continued to evolve. The NISSAN GT-R NISMO GT3, a racing car developed based on the regulations of the FIA GT3, is also a successor of the Nissan GT-R legacy. Since its launch in 2012, the NISMO GT3 has competed in GT3 races in which numerous global manufacturers compete for the victory. It has continued to refine its competitive performance. It won the overall victory at the "Bathurst 12 Hour," a race held at a special course made of enclosed public roads in Australia in 2015. It also raced in the "SUPER GT Series" GT300 class that was held in Japan, in which GT cars from

various manufacturers displayed a heated battle between rivals. The car won 1st and 2nd for two consecutive races of both the Fuji Round and Thai Round, proving its high competitive performance. In addition, it won the championship at the Blancpain Endurance, the largest GT3 championship in Europe. In 2016, it won in all six races for the "Super Endurance Series," easily winning the series championship. At the "Total 24 Hours of Spa," one of the top three global 24 hour races, the car finished all the races consecutively 4 years in a row between 2014 and 2017, as well as finishing "24 Hours Nürburgring" consecutively between 2014 and 2016, proving its durability and reliability.

The technology and experience accumulated and refined during these severe competitions were inherited for the evolution of the next generation NISMO GT3.



2015 SUPER GT Champion

It's performance overwhelmed the rest of the series.

2015 SUPER GT 300 Class

Rd	Circuit	GTR Position	Ranking	Car
1	Okayama International Circuit	7	Champion	NISSAN GT-R NISMO GT3
2	Fuji Speedway	1 🏆	2	TOYOTA PRIUS apr GT
3	Chang International Circuit	1 🏆	3	NISSAN GT-R NISMO GT3
4	Fuji Speedway	6		
5	Suzuka Circuit	1 🏆		
6	Sports land SUGO	6		
7	Autopolis	1 🏆		
8	Twin Ring Motegi	6		



2016 SUPER TAIKYU Champion

Dominated the series by winning all races.
Dominating the top tiers in ranking.

2016 SUPER TAIKYU ST-X Class

Rd	Circuit	GTR Position	Ranking	Car
1	Twin Ring Motegi	1 🏆	Champion	NISSAN GT-R NISMO GT3
2	Sports land SUGO	1 🏆	2	NISSAN GT-R NISMO GT3
3	Suzuka Circuit	1 🏆	3	NISSAN GT-R NISMO GT3
4	Fuji Speedway	1 🏆		
5	Okayama International Circuit	1 🏆		
6	Autopolis	1 🏆		



2015 Blancpain Endurance Series Champion

Comprehensive power led to victory.

2015 Blancpain GT Series Endurance Series Drivers' Championship Pro Cup

Rd	Circuit	GTR Position	Ranking	Car
1	Monza	4	Champion	NISSAN GT-R NISMO GT3
2	Silverstone	5	2	Bentley Continental GT3
3	Paul Ricard	1 🏆	3	Audi R8 LMS Ultra
4	Spa-Francorchamps	8		
5	Nurburgring	3		

2015 Bathurst 12hour Champion

The key to victory was due to its durability and explosiveness.

2015 Bathurst 12 Hour

Rd	Circuit	GTR Position	Ranking	Car
1	Mount Panorama	1 🏆	Champion	NISSAN GT-R NISMO GT3
			2	Audi R8 LMS Ultra
			3	Aston Martin Vantage GT3



NISSAN GT-R NISMO GT3 Around the World



2018 Blancpain GT Series
Endurance Cup
1 car



FIA GT Nations Cup
Bahrain
1 car



2018 Blancpain GT Series
Asia
2 cars



65th FIA GT World Cup
Macau GP
3 cars

NISSAN GT-R NISMO GT3 Around the World



2018 SUPER GT
GT300 Class
4 cars



2018 SUPER TAIKYU
3 cars



Suzuka 10 hour
3 cars



Fuji 24 hour
2 cars

nismo



GT3

NISSAN nismo

NISSAN GT-R NISMO GT3
Customer Racing



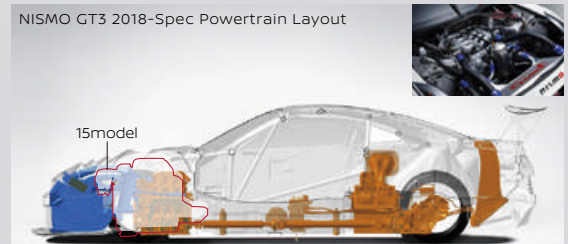
Dynamic Performance 2018-Spec

Pursuing a higher driving performance.

The major theme of the NISSAN GT-R NISMO GT3 2018-Spec is to improve driving performance by lowering the gravity center and optimizing the front and rear weight distribution. The position of the engine used to be the same as that of the GT-R. It is now lowered approximately 150 mm by making the oil pan thin by implementing a dry sump system. By lowering the entire power train that includes components such as the propeller shaft and gear box which are heavy, the center of gravity was significantly lowered successfully. In order to optimize the front-and-rear weight distribution, the engine was moved backward, approximately 150 mm closer to the vehicle center. Thus, the weight distribution was optimized.

Furthermore, the torsional rigidity of the front end was increased and the suspension was fully reviewed. With its low center of gravity and optimum weight distribution, a maneuverability that responds accurately to the driver's input is achieved.

NISMO GT3 2018-Spec Powertrain Layout



Compared to the 2015 model, the engine and power train are placed lower. In addition, by moving the engine to the back, the front-and-rear weight balance is optimized.



Aerodynamic Performance 2018-Spec

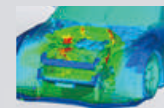
To control air flow.

The aerodynamics of the NISSAN GT-R NISMO GT3 2018-Spec is developed to ensure vehicle stability and to improve the cooling performance.

By reviewing the suspension settings thoroughly, the vehicle position change is controlled. Stable down force that is not affected by the change in vehicle height due to suspension setting changes at the circuit is ensured. Furthermore, air flow inside the engine room is optimized to increase down force. Driving stability in the high speed range is improved. In addition, the layout of the radiator and the intercooler was modified. A space in the front of the engine room created by moving the engine to the back was used to

install the radiator and intercooler at ideal positions so that air can be passed through smoothly.

At the same time, the layout of air intake and air outlet was also modified to significantly improve the cooling performance.



NISMO GT3 2018-Spec Aerodynamics
In addition to optimizing the layout of the radiator and the intercooler, the air flow inside the engine room is improved to reduce drag.

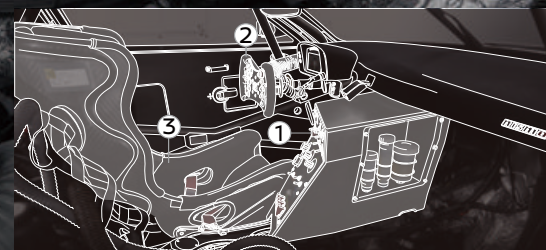




Driving Comfort 2018-Spec

Improving the comfortability
and ease of handling.

The NISSAN GT-R NISMO GT3 2018-Spec has an entirely new cockpit to improve comfortability and operability. The seat is lowered while maintaining the frontal visibility. This also helps lower the center of gravity of the vehicle. Additionally, an innovative driver cooling system can optionally be equipped. This system does not cool the inside of the cockpit. It rather sends cool air directly to the helmet and seat to keep drivers at their best condition. Furthermore, the steering wheel is also redesigned and the switch panel layout on the center console has been renewed. Operability is also improved.



- ❶ Improved switch layout. Easier-to-use center console
- ❷ Steering wheel with improved operability
- ❸ The seat is lowered to help lower the center of gravity without hindering the frontal visibility.

Technical Data

DIMENSIONS		
Engine model	VR38DETT	
Displacement	3,799cc	
Max. Power	Over 405kw / 6,500rpm (Over 550ps/6,500rpm)*	
Max. Torque	Over 637N·m / 5,000rpm (Over 65.0kgf·m/5,000rpm)*	
Length	4,832mm	
Width	2,036mm	
Wheelbase	2,817mm	
Front track	1,690mm	
Rear track	1,700mm	
Weight	1,285kg *	
Drive system	2WD (FR)	

POWER TRAIN		
Clutch disc	Metal, 5.5-inch 4-plate	
Transmission	6-speed sequential	

BRAKE		
Fr	6-piston caliper Ventilated Disc Brake&Pad	
Rr	4-piston caliper Ventilated Disc Brake&Pad	

SUSPENSION		
Fr	Double Wishbone	
Rr	Double Wishbone	

TIRES		
Fr	330 / 710-18	
Rr	330 / 710-18	

WHEELS		
Fr	13.0J×18	
Rr	13.0J×18	

FIA Homologation No.	
	GT3-048 NISSAN GT-R NISMO GT3 2018

* Subject to change according to FIA's balance of performance.

Price	
	NISSAN GT-R NISMO GT3 GT3 60,000,000 yen(excl.tax)

Options	
	Primary Parts Package
	Driver Cooling System
	Nurburgring 24hour special upgrade package

Support	
	Official NISMO customer support program easy-to-click WEB Parts Order System



2018-Spec Development

Fast and stable and fun to drive.



As a NISSAN GT-R NISMO GT3 development driver, I drove at Nürburgring as well as at circuits in Japan to develop the car. First, let me tell you what has changed for 2018-Spec.

This is what I found out at the course in Nürburgring. Stability at a high speed corner is greatly improved. Even at a corner where I drove above 240 km/h, the down force was effective to keep the car gripping the road, which gave me peace of mind. This is a great improvement.

For previous models, the car slightly showed a tendency of understeer at a mid-corner.

2018-Spec is much quicker and sharper, greatly improving driveability. Furthermore, stability while running offline in traffic is much better. I guess this is because the lowered center of gravity works effectively. Also traction control performances have improved. This is especially evident at a tight corner. Driving becomes easier, and I can press down on the gas pedal with confidence.

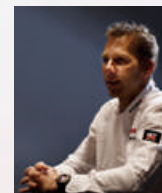
The response to the changes made on the car settings has been improved and any engineer can respond

to the driver's request accurately.

On the other hand, one of the advantages of the NISMO GT3 is that it is easy to drive. That is, any driver can drive the car at ease, and even when the limit is exceeded, it is easy to recover, which is a feature that is justly maintained.

NISMO develops cars based on the idea "fast cars are easy to drive and driving is fun." Since this is a commercial racing machine, drivers at various levels drive the NISMO GT3. Some drivers drive fast with oversteer while others prefer understeer. Thus, we have invested a lot of time to develop the NISMO GT3 2018-Spec so that drivers with any driving preference can run with ease and at fast speeds.

In short, this is "a car which runs fast, stable, and fun to drive." This is the NISMO GT3 2018-Spec. Enjoy racing with this machine to your heart's content.



Profile of Michael Krumm:
NISSAN GT-R NISMO GT3 2018-Spec
development driver

As a Nissan driver and a champion of the FIA GT1 World Championship, he competed at various races including SUPER GT and FIA GT for many years, contributing to Nissan winning numerous titles. Particularly, with his high development capabilities, he provided precious feedback to the engineers to help the team win. He recorded the fastest time for production vehicles at 7:08.679 with the NISSAN GT-R at Nürburgring. As the NISMO GT3 2018-Spec development driver, he participated in the project at its initial stage, significantly contributing to the evolution of the vehicle.

nismo



GT3

NISSAN nismo

NISSAN GT-R NISMO GT3
Customer Racing



nismo



GT3

NISSAN nismo

NISSAN GT-R NISMO GT3
Customer Racing

nismo

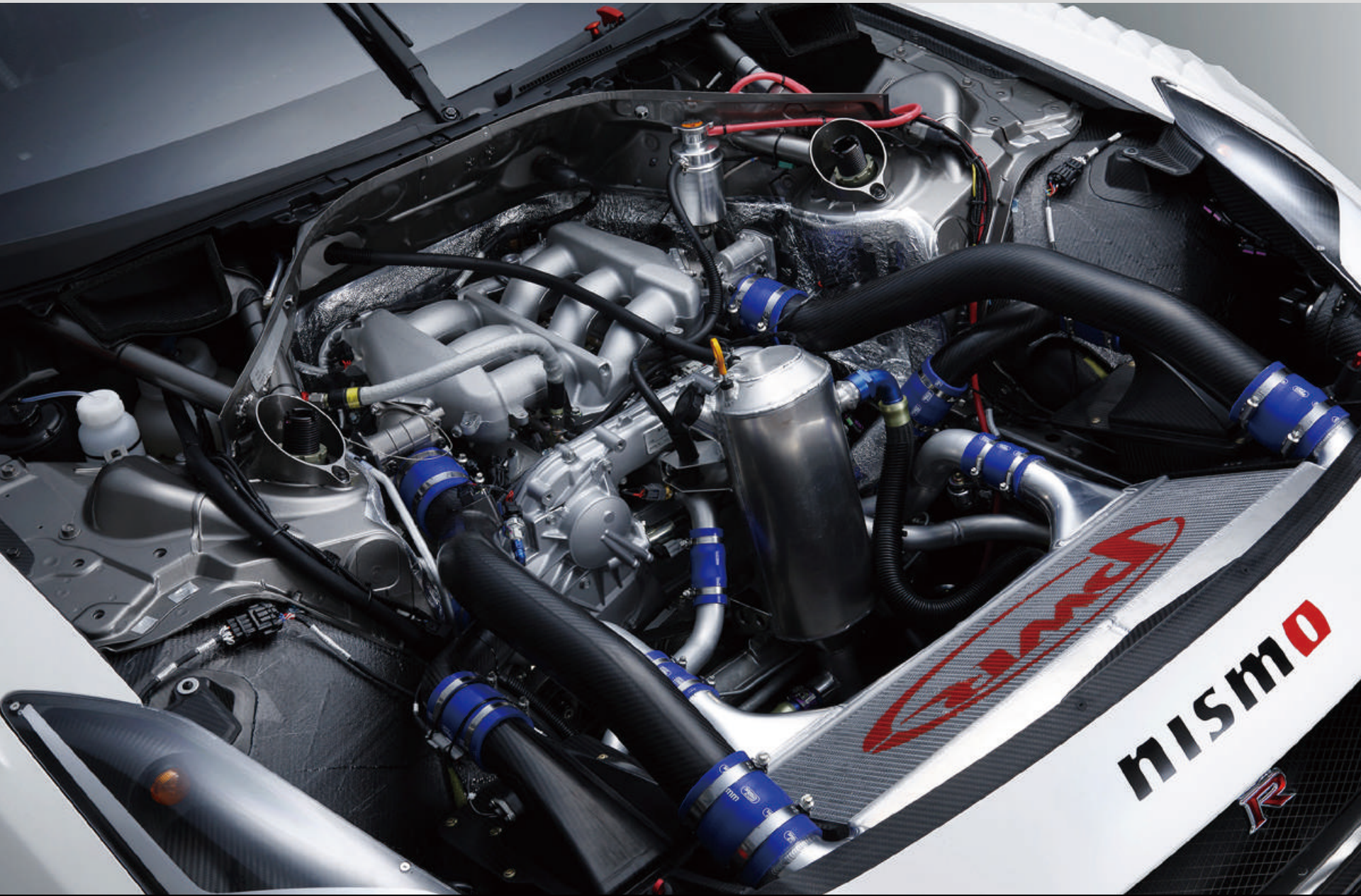


GT3

NISSAN nismo

NISSAN GT-R NISMO GT3
Customer Racing

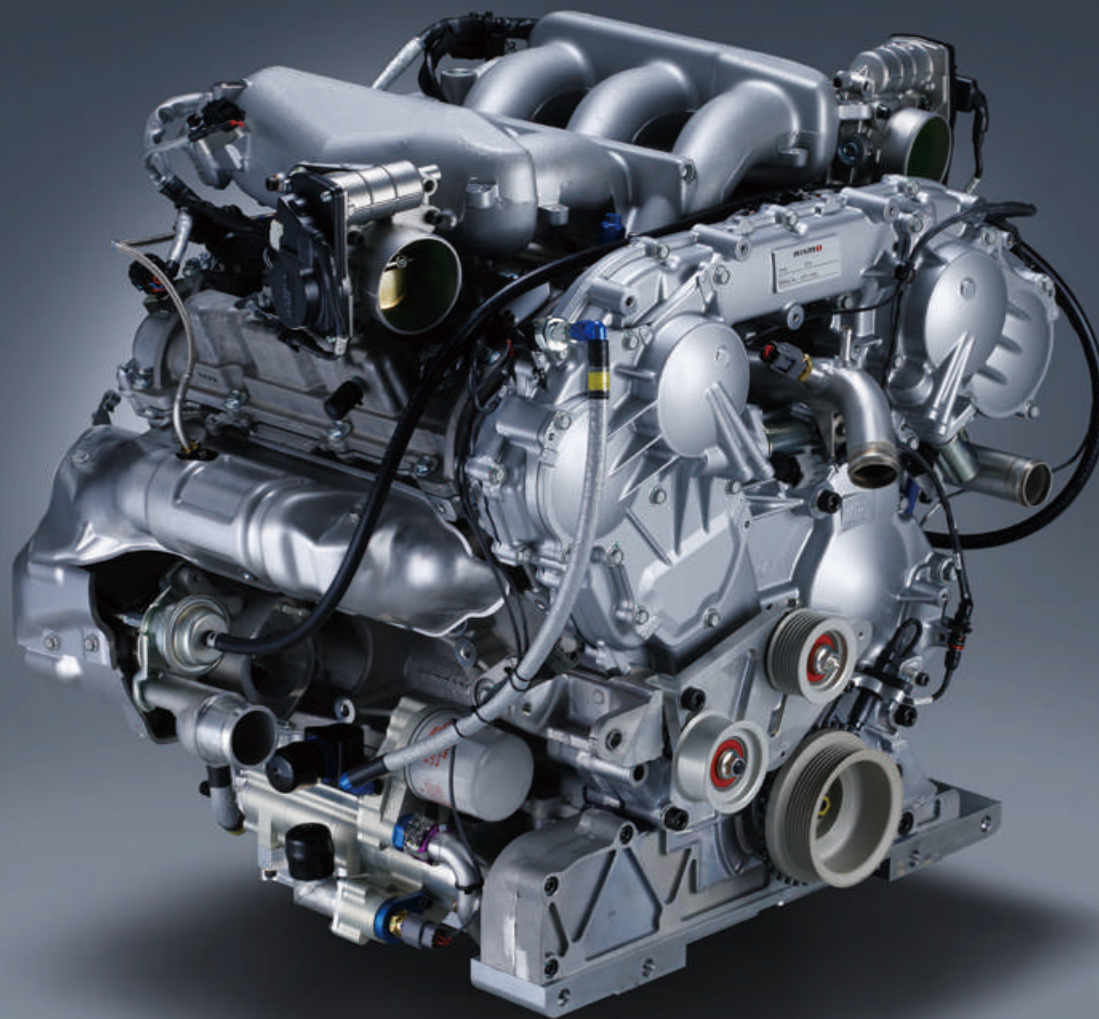
nismo



GT3

NISSAN nismo

NISSAN GT-R NISMO GT3
Customer Racing



Official Supplier for NISSAN GT-R NISMO GT3

MOTUL

MOTUL has continued its partnership with NISMO since 2003 in the field of motor sports and oil business. Both worked together to win numerous races by developing and applying optimum oil in each category. In 2008, NISMO and MOTUL jointly developed the Competition Oil series, and their partnership expands to the products produced for street use.

Since the release of the NISSAN GT-R NISMO GT3 in 2012, MOTUL continued to support numerous NISSAN GT-R NISMO GT3 users with their high performance motor sports oil. <https://www.motul.com/jp/en>

RAYS

RAYS has continued to support NISMO racers as the wheel supplier for the NISMO team competing in the GT500 class for SUPER GT and its preceding JGTC.

RAYS has a large customer base in every category from users who purchase commercially available wheels to teams competing with the NISSAN GT-R GT3. Depending on the fields, the required performance varies.

The company aimed to attain a higher level by expanding its technology and knowhow to all wheels.

To achieve this superior quality, the company believes an integrated system of production is critical and is dedicated to the "Made in Japan" production. www.rayswheels.co.jp/index.php?lang=en

**GT3****NISSAN nismo**NISSAN GT-R NISMO GT3
Customer Racing





Contact us

NISMO Customer Racing

Shunichi Furuya Sales manager for Customer racing

E-mail : gt3_support@mail.nismo.co.jp

Web : www.nismo.co.jp/en/products/customerracing/

Nissan Motorsports International Co.,Ltd.

6-1 Daikoku-cho Tsurumi-ku

Yokohama-shi Kanagawa 230-0053

JAPAN

A large, illuminated NISMO logo is mounted on the side of a modern building at night. The logo is brightly lit, with the letters "nismo" in white and the "o" in red. The building's facade is dark, and a red light strip runs along the top edge of the building, creating a dramatic effect against the dark sky.