

# ALL-NEW FORD MONDEO



Go Further

# Introducing the All-New Ford Mondeo

2

With its intelligent technology and stylish design, Mondeo makes every journey feel special. It delivers exhilarating power without compromising fuel economy. It gives you greater stability and control, so you can worry less. Inside and out, Mondeo is a complete car.

3



## Smart

Stay in touch with your world. Just say the words and SYNC™ 2 keeps you connected, while your hands stay safely on the wheel and your eyes on the road.



### Hands-free phone

Make calls. Take calls. With a few simple words you're in total control of your Bluetooth® phone. You can even continue a conversation when you get in or out of your Mondeo. Incoming text message? No problem. Ask SYNC™ 2 to read it out!

### Hands-free music

If you love your music, you'll love SYNC™ 2. Plug-in your iPod® and you can be as specific about your musical tastes as you like. Browse and select your favourite music by track, band, genre or just shuffle.

### Touchscreen and Media Hub

Easy to navigate, the 8-inch touchscreen lets you set-up your SYNC™ 2 phone, music and climate settings to suit you. Two USB ports, an SD card slot and RCA port mean you can also use the screen to view videos or photos you've just taken.

### Rear View Camera\*

Reverse like you have eyes in the back of your head. Mondeo's Rear View Camera lets you clearly see what's behind you, while the beep of the rear parking sensors tells you how close you are. The system even automatically turns down your music so you can hear the beeps clearly.

### MyKey®

Handing over the keys to the younger members of your family is a tough call. But MyKey® makes sure that they'll drive as if you were in the car with them. You can program it to remind them to put on seat belts, limit their speed, keep their music volume down and concentrate on the drive, not their phone.

\*Local laws may prohibit the use of this feature while driving. iPod is a registered trademark of Apple Inc. and is used under licence.  
\*Bluetooth® is a registered trademark of Bluetooth SIG Inc., and is used under licence. For SYNC™ compatibility, visit [www.ford.com.my/sync](http://www.ford.com.my/sync)

## Performance

4

An expensive-looking car shouldn't be expensive to run. We give you a fuel efficient, powerful engine, and fuel saving technologies. Then we top it all off with Ford's latest performance technologies that offer greater control and ease of driving.



### 2.0L EcoBoost

Why does the combination of turbocharging, direct fuel injection and twin independent variable camshaft timing (Ti-VCT) in our 2.0L i4 EcoBoost deliver more? This four cylinder petrol engine is smaller and lighter than larger displacement engines so it delivers superior fuel economy, yet there is no compromise on power.



### 6-Speed SelectShift with Paddle Shifters

The ease of an automatic and the thrill of a manual. With Paddle Shifters on the steering wheel, similar to those used by racing drivers, our SelectShift automatic transmission lets you shift through gears, smoothly and effortlessly, without having to use a clutch.



### Adaptive Cruise Control

Cruise Control is great on the open road. But, even here, you can find traffic. So instead of having to turn the system on and off, the All-New Mondeo adapts. Sensors scan the traffic ahead, updating their positions 20 times a second. If traffic slows, so does your speed. When the traffic clears, it returns to your pre-set speed.

## Quality

Mondeo doesn't just give you greater stability and control – it spoils you. It gives you total comfort and convenience.



### Adaptive LED headlamps

Not only do these lights automatically turn themselves on and off with changes in natural light, but they also help you see around corners. A standard headlight's beam is usually fixed on one spot. These lights change the beam's level so it always on the road, no matter what. The beam even turns corners and bends.



### Dual zone climate control

Everyone's idea of comfort is different. Our dual zone climate control allows both you and your front seat passenger to choose the heating and cooling settings you prefer for your own personal space. So everyone's happy.

# Safety

The All-New Mondeo offers high levels of protection and control that are reflected in its 5-star Euro NCAP safety rating. 7 Airbags help keep you safe, while Electronic Stability Control keeps you on track, especially around corner when you need to swerve.

### Lane Keeping Alert and Lane Keeping Aid

By monitoring road markings, this system detects if you appear to unintentionally move out of your lane. If you do, your steering wheel will vibrate to warn you. If lane departure continues it will also direct you back into your lane by applying steering torque, unless your indicator is on.

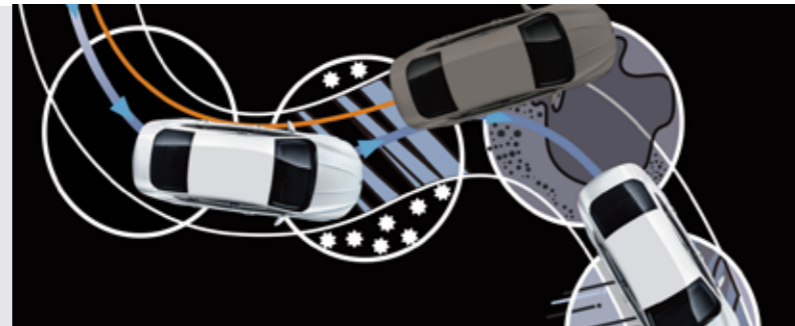


### 7 Airbags all-round

Knowing you're surrounded by protection is a good feeling. With driver and passenger airbags, seat-mounted side airbags and one for the driver's knee in the front, as well as side-curtain airbags for people in the front and back, that's a lot of peace of mind.

### Electronic Stability Control (ESC)

The combination of Electronic Stability Control (ESC) and Traction Control helps keep you connected to the road and in control, especially around corners and when overtaking. Together with ABS (Anti-lock Braking System) they help reduce the chances of wheel spin, wheel lock and over- or under-steering.



# Colours



Frozen White



Ruby Red



Panther Black



Tectonic Silver

# Specifying your all-new Mondeo

## Mondeo highlights

Feature	2.0L EcoBoost
<b>Engine</b>	<b>6-Speed Selectshift Auto</b>
Engine type	2.0L I-4 GTDI
Fuel Preparation	Minimum RON 95 <sup>1</sup>
Displacement (cc)	1999
Bore & Stroke (mm)	87.5 x 83.1
Compression ratio	9.3
Maximum Power (Ps (kW)/rpm)	240 (177) @ 5300 <sup>1</sup>
Maximum Torque Nm (kg.m)/rpm	345Nm (34.5) @2300 - 4900 <sup>1</sup>
Fuel Tank Capacity (Liters)	62.5
Kerb Weight (kg)	1562
<b>Consumption (litres/100 kms)</b>	
• Combined	8.0 <sup>2</sup>
Top Speed km/h	240
<b>Brake</b>	
Front & rear	Disc
<b>Steering</b>	
Type	EPAS
<b>Suspension</b>	
Front	McPherson Strut
Rear	Multi Suspension arm
<b>Wheel</b>	
Wheel Size	17" Alloy
<b>Tyre</b>	
Front & Rear	235/50 R17
<b>Dimensions &amp; Weight</b>	
Overall Rear Track (mm)	1585
Wheelbase (mm)	2850
Overall Front Track (mm)	1589
Overall Length (mm)	4871
Overall Width (mm)	1852
Overall Height (mm)	1486
Ground Clearance (mm)	157
Curb Weight (kg)	1562
Gross Vehicle Weight (GVW)	2220
<b>Exterior</b>	
Power Window - Front Driver & Passenger	1-touch up/down
Front Grille	Chrome
Wing Mirror	Power/Auto Fold with puddle lamp
Front LED Headlamps	Auto & Adaptive
Follow-Me-Home Lighting	S
Front & Rear Fog Lights	S
Day Time Running Lights (DTRL)	S
Front & Rear Parking Aid Sensor	S
Reverse Camera	S
Automatic Wiper System	Rain sensing
Smart Regenerative Charging	S

Interior	
Anti Allergy Interior	S
Keyless Ignition System	S
Paddle Shifter	S
Bluetooth® & Voice Command <sup>3</sup>	S, with SYNC GEN 2
Electronic AirConditioning	Dual Zone EATC
8" center stack LCD touch screen	S
MP3, CD Indash with Auxiliary Port, Bluetooth & Voice Command, USB and AUX Port, Dual am/fm <sup>4</sup>	Sony Branded with 9 Speakers
Tilt & Telescopic Steering Wheel Adjust	S
Audio Control on Steering Wheel	S
Leather Wrapped Steering Wheel	S
Leather Wrapped Gear Knob	S
Seat Material	Leather
Driver Seat Adjust 10 Way Driver	Power & Memory setting
Passenger Seat Adjust	10-way Power
Electrochromatic Rear View Mirror	S
Ambient Lighting	S
<b>Safety &amp; Security</b>	
Electronic Stability Control (ESC)	S
Lane Keeping Aid	S
Keyless Entry & Start System	S
Ford MyKey	S
ABS with EBD	S
Capless Fuel Filler	S
Rear 3-Point Seat Belts	S
Emergency Brake Assist (EBA)	S
Engine Immobilizer	S
Hill Launch Assist (HLA)	S
Thatcham Category 1 alarm	S
• Driver & Passenger Airbags	S
• Side Airbags	S
• Curtain Airbags	S
• Knee Airbag	S
Collapsible Steering Column	S
Cruise Control	Adaptive
Central Locking	S
Seat Belt Pretensioners	S
ISOFIX for Childseats Attachments	S
Side Impact Beam	S

1. All performance data measured using 95RON fuel.  
 2. The declared fuel consumptions and CO2 emissions are measured according to technical requirements and specifications of European Directive 80/1268/EEC or the European Regulation (EC) 715/2007 amended by (EC) 692/2008 as last amended.  
 3. Bluetooth® is a registered trademark of Bluetooth SIG Inc. and is used under license. Please refer to ford.com.my for mobile phone compatibility.  
 4. Connection cable sold separately.



### Quality

We design and build your Ford to feel as good after many years of service as it did the day you picked it up. And to drive just as beautifully, too.



### Sustainability

Using advanced technology, we're committed to creating vehicles with improved fuel economy, reduced CO<sub>2</sub> emissions and a lower overall cost of ownership.



### Safety

Ford's Intelligent Protection System uses sophisticated technology designed to help prevent an accident and, if one should happen, to help protect you.



### Smart

Vehicles with smart, intuitive technologies designed to connect you to your world and many clever solutions that make life a little easier.

**Speak to your Ford Dealer today about how we can help you make the most out of your vehicle ownership experience.**

### 3 year/100,000km new car warranty#.

For three years or 100,000km, whichever comes first, your All-New Mondeo is covered against any defects in factory materials or workmanship. This also applies to Genuine Ford Accessories you may have had fitted before you took delivery.

### Ford Extended Service Plan (ESP)

3 years or 60,000km whichever comes first – the free service program covers parts and labour recommended by the manufacturer as per your Owner's Manual. Customers are entitled to free service at 10,000km intervals starting from 10,000km till 60,000km, including normal wear items such as spark plugs, shock absorbers, engine belts, brake pads and wiper blades.

### Running a fleet?

Our Ford Fleet team is available to assist fleet customers with information on Ford products and services. Call 1800 38 3181 or email [customer-care.sdac@sime-darby.com](mailto:customer-care.sdac@sime-darby.com)

### Want to contact us?

For answers to your questions, or help with any concern, contact our Customer Relationship Centre on call 1800 38 3181 or email [customer-care.sdac@sime-darby.com](mailto:customer-care.sdac@sime-darby.com)

### Visit us on the web.

If you want more information on Ford or our entire product range, visit us at [ford.com.my](http://ford.com.my)

#Conditions and exclusions apply. For more information visit [www.ford.com.my/warranty](http://www.ford.com.my/warranty)



This brochure is designed to provide you with a general introduction to the Ford Products (including available optional equipment) referred to, and should be read in conjunction with the latest specification sheet. Because of changes in conditions and circumstances Ford\* reserves the right, subject to all applicable laws, at any time, at its discretion, and without notice, to discontinue or change the features, designs, materials, colours and other specifications and the prices of its products, and to either permanently or temporarily withdraw any such products from the market without incurring any liability to any prospective purchaser or purchasers. The latest specification sheet should be referred to for information on the availability, ordering and use of optional equipment. Always consult an authorised Ford Dealer for the latest information with respect to features, specifications, prices, optional equipment and availability before deciding to place an order.



**Go Further**