





Note: Vehicles pictured and specifications detailed in this catalogue may vary from models and equipment available in your area. Please inquire at your local dealer for details on the availability of features.

Note: Vehicles pictured and specifications detailed in this catalogue may vary from models and equipment available in your area. Please inquire at your local dealer for details on the availability of features.



Note: Vehicles pictured and specifications detailed in this catalogue may vary from models and equipment available in your area. Please inquire at your local dealer for details on the availability of features.

Note: Vehicles pictured and specifications detailed in this catalogue may vary from models and equipment available in your area. Please inquire at your local dealer for details on the availability of features.



Note: Vehicles pictured and specifications detailed in this catalogue may vary from models and equipment available in your area. Please inquire at your local dealer for details on the availability of features.

Note: Vehicles pictured and specifications detailed in this catalogue may vary from models and equipment available in your area. Please inquire at your local dealer for details on the availability of features.



Note: Vehicles pictured and specifications detailed in this catalogue may vary from models and equipment available in your area. Please inquire at your local dealer for details on the availability of features.



Note: Vehicles pictured and specifications detailed in this catalogue may vary from models and equipment available in your area. Please inquire at your local dealer for details on the availability of features.



Note: Vehicles pictured and specifications detailed in this catalogue may vary from models and equipment available in your area. Please inquire at your local dealer for details on the availability of features.

Note: Vehicles pictured and specifications detailed in this catalogue may vary from models and equipment available in your area. Please inquire at your local dealer for details on the availability of features.

LEXUS ES



CONCEPT



Is it possible to experience extraordinary joy in daily life? We created the new ES to do just that. To the regular tasks of moving you from place to place, it adds pleasure, comfort and peace of mind, turning the routine into special experiences. The rejuvenated ES injects excitement into your everyday.





Note: Vehicles pictured and specifications detailed in this catalogue may vary from models and equipment available in your area. Please inquire at your local dealer for details on the availability of features.

Note: Vehicles pictured and specifications detailed in this catalogue may vary from models and equipment available in your area. Please inquire at your local dealer for details on the availability of features.

We further refined the renowned quietness and ride comfort of the ES's spacious interior, then heightened the experience of driving pleasure. Even as you relax in comfort, the elegant design catches eyes on the street. As Lexus's unique new luxury sedan, the ES goes a step beyond to provide premium comfort.



DESIGN



Given the beautiful proportions, low centre of gravity, and coupe-like styling, you would never guess at the spacious interior. It delivers an emotional design that excites occupants, while capturing the attention of people passing by.



Note: Vehicles pictured and specifications detailed in this catalogue may vary from models and equipment available in your area. Please inquire at your local dealer for details on the availability of features.

Note: Vehicles pictured and specifications detailed in this catalogue may vary from models and equipment available in your area. Please inquire at your local dealer for details on the availability of features.



EXTERIOR

The flowing roof line that slopes towards the rear complements the balanced proportions and accentuates the wide, low stance. The sharp front face and rich contrast of the side profile contribute to a powerful presence that invites you to experience exhilarating driving.



INTERIOR

The interior provides a comfortable, human-centred space. Controls in the snug cockpit have been laid out so that drivers don't need to change their line of sight or posture, while passengers enjoy a calm, relaxing space with ample legroom.



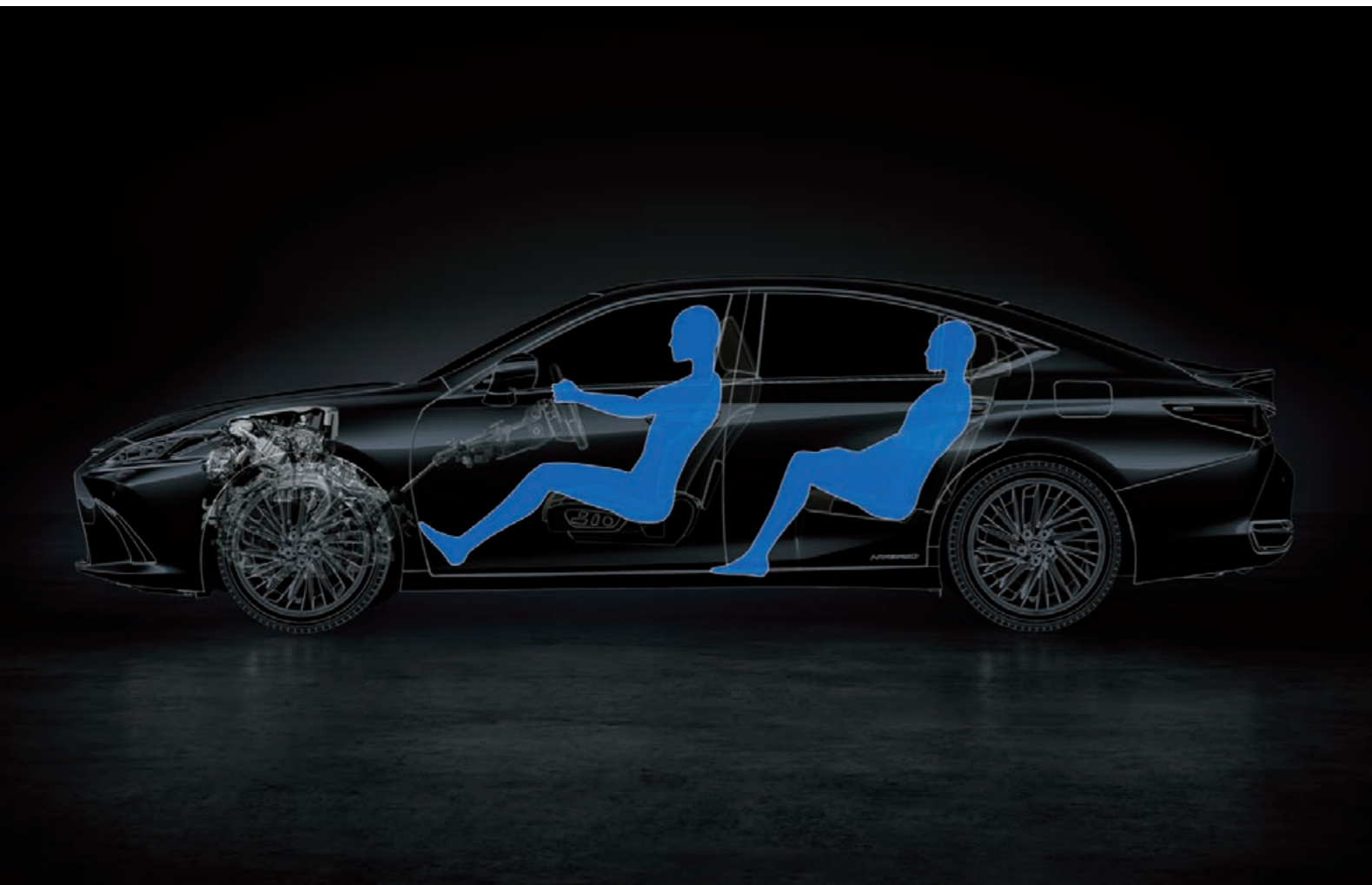


PERFORMANCE



Simply depress the accelerator or turn a corner, and you'll realise the ES refines the basics of performance. The smooth acceleration and optimised cornering control realise response that resonates with the driver's feelings. Even turning at an intersection you often drive through, you'll experience a warm thrill of excitement.

3



GA-K (Global Architecture-K) Platform

Lexus developed a new platform for the ES from scratch to create the foundation for excellence in core criteria, including design, dynamic performance, ride quality, quietness, and safety. For dynamic performance, the location and angle of the steering wheel and pedals were reviewed to create a posture that supports easy driving. To augment the vehicle's excellent DNA with its low centre of gravity and uniform lateral weight distribution, the geometry of the high-rigidity body and chassis were optimised to deliver excellent straight-line driving stability, stable cornering, and braking stability.

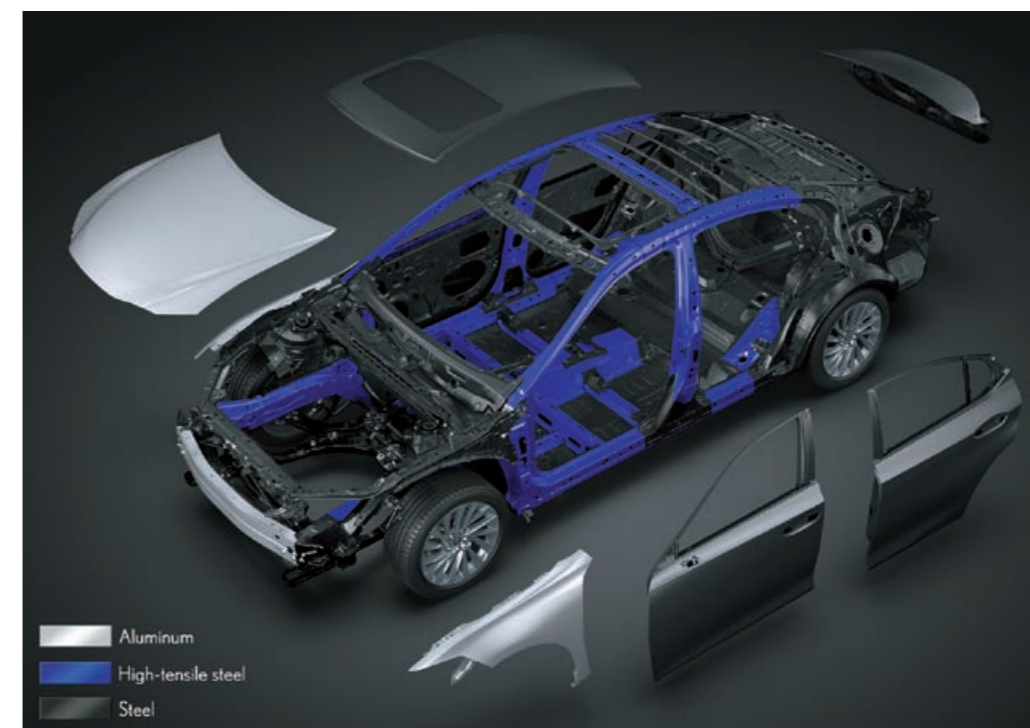
In addition, the integration of advanced features including the newly developed parallel rack EPS (Electric Power Steering) and performance dampers* provide secure and pleasant handling that closely responds to the driver's intentions. Finally, we aggressively blocked vibrations and reduced every aspect of sensitivity to vibration to reduce noise and vibrations from the engine and tyres, to provide a comfortable ride with outstanding quietness.

*Available for ES 250 Luxury only.

Note: Vehicles pictured and specifications detailed in this catalogue may vary from models and equipment available in your area. Please inquire at your local dealer for details on the availability of features.

Multi-material Body

The ring-shaped body structure helps to reduce body torsion. A V-shaped brace behind the rear seats contributes to coupling rigidity for excellent stability. In addition, body rigidity is enhanced by the extensive use of advanced technologies including laser screw welding and structural body adhesives. Optimising the use of hot-stamp and high-tensile steel in key body components also reduces weight while contributing to excellent collision safety.



Electric Power Steering (EPS)

The parallel rack electric power steering system provides crisp, clean response as soon as you start turning the steering wheel. A newly developed steering column offers enhanced rigidity and excellent steering feel.



Note: Vehicles pictured and specifications detailed in this catalogue may vary from models and equipment available in your area. Please inquire at your local dealer for details on the availability of features.



Performance Dampers*

Performance dampers in the front and rear boost the feeling of unity between car and driver. The dampers quickly absorb body flex and minuscule vibrations while driving to sharpen handling characteristics and contribute to the excellent ride comfort and quietness.



Aerodynamics

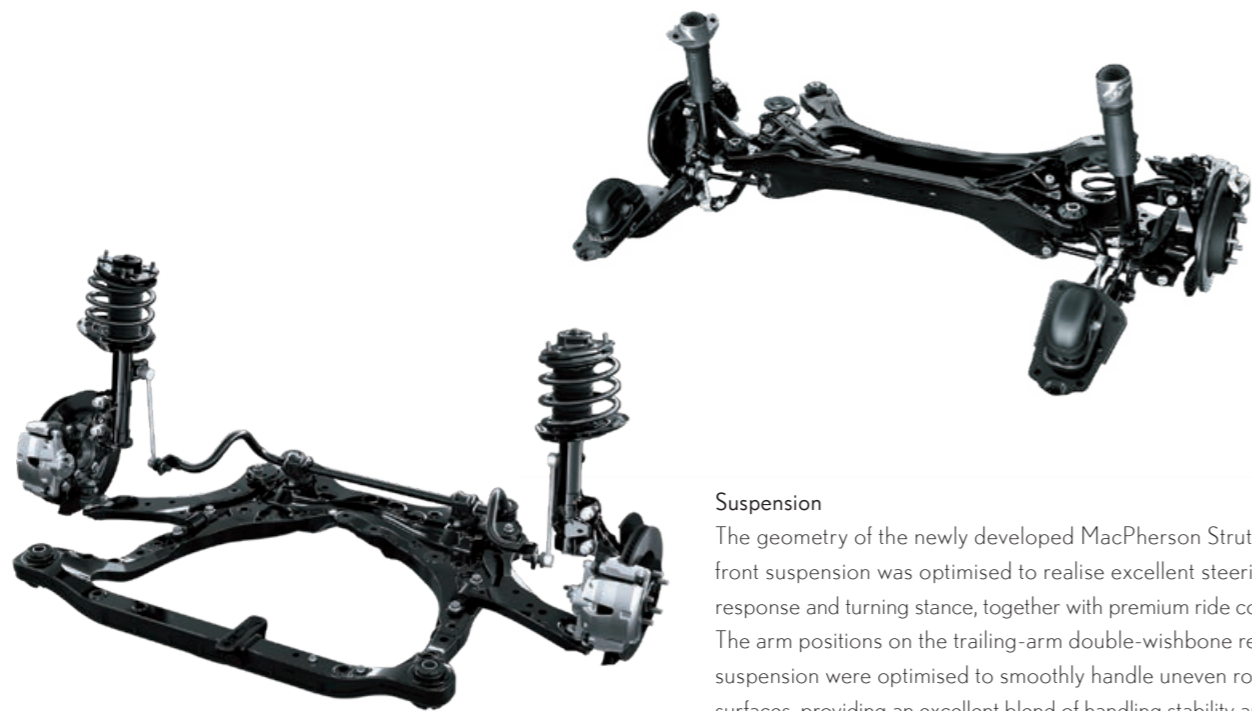
Aerodynamic performance is seamlessly integrated into the elegantly shaped silhouette so that air flows from the rear seats to the trailing edge of the boot. Fins on the underbody cover and rear combination

lamps reduce air resistance, contributing to the quiet interior and excellent fuel efficiency. The controlled air flow also enhances driving stability.

*Available for ES 250 Luxury only.

Note: Vehicles pictured and specifications detailed in this catalogue may vary from models and equipment available in your area. Please inquire at your local dealer for details on the availability of features.

Note: Vehicles pictured and specifications detailed in this catalogue may vary from models and equipment available in your area. Please inquire at your local dealer for details on the availability of features.



Suspension

The geometry of the newly developed MacPherson Strut front suspension was optimised to realise excellent steering response and turning stance, together with premium ride comfort. The arm positions on the trailing-arm double-wishbone rear suspension were optimised to smoothly handle uneven road surfaces, providing an excellent blend of handling stability and ride comfort. In addition, the shock absorbers on both the front and rear suspension incorporate swing-valve shock absorbers that respond to even minuscule movements, to provide an exceptionally flat feel when starting up, as well as excellent straight-line stability when driving at speed.

Brakes

Engineered for excellent braking force, control and response, the brakes provide intuitive response to the driver's input, feeding driving pleasure by supporting exciting driving with peace of mind. In addition, the ES is equipped with an electric parking brake, further enhancing easy operation and driving enjoyment.



Drive Mode Select

Drive mode select provides integrated control of multiple systems to let you tune performance to suit your driving style. You can select and change between three modes: Eco, Normal, Sport.

2.5-litre L4 Engine (A25A-FKS)

The newly developed 2.5-litre L4 engine delivers a sophisticated blend of dynamic performance, fuel efficiency and environmental friendliness. Reviewing the engine's basic design, adopting a longer stroke and high-efficiency intake ports, and enhancing the flow of air in the cylinders realise high-speed combustion. Additional refinements include multi-hole direct injectors, a continuously variable-capacity oil pump, a variable cooling system, and VVT-iE on the intake-side valves.*



Direct Shift-8AT

The newly developed Direct Shift-8AT delivers both exciting performance with direct response and outstanding fuel efficiency. The 8-speed configuration provides a 20% wider gear ratio, contributing to powerful acceleration and quiet, smooth performance during high-speed cruising, while enabling continuous operation in the engine's high-efficiency zone to significantly enhance fuel efficiency. In addition, maximising use of the lock-up control delivers direct response that quickly responds to accelerator operation.

*VVT-iE: Variable Valve Timing-intelligent by Electric motor.

Note: Vehicles pictured and specifications detailed in this catalogue may vary from models and equipment available in your area. Please inquire at your local dealer for details on the availability of features.

Note: Vehicles pictured and specifications detailed in this catalogue may vary from models and equipment available in your area. Please inquire at your local dealer for details on the availability of features.



FEATURES



Refining the advanced levels of luxury and utility experienced in the previous generation model enables the driver and passengers to enjoy premium comfort, for a quality of luxury comfort that is consistently a step ahead.





The sharp face is focused on the Lexus spindle grille, a core design cue that is heightened by the compact LED headlamps. The DRL (Daytime Running Lamps) emit an L-shaped light that radiates a smart and fearless expression. L-shaped LED rear combination lamps further embed the distinctive Lexus identity. Advanced features

including acoustic glass and seatback silencers contribute to the extremely low noise levels in the cabin, further enhancing this relaxing private space. It is a refined expression of Lexus hospitality that remains ahead of its time in shaping perceptions of luxury.



Ultra Compact 3-beam LED Projector Headlamps*

The Ultra Compact 3-beam LED Projector Headlamps combine a beautiful, sharply-defined design with excellent light distribution. The sequential turn signal lamps illuminate in a sequential flow from the inner side to the outside of the vehicle.



Hands-free Power Bootlid*¹

Even if both hands are full, when carrying the Electronic Key you can open and close the bootlid automatically by moving your foot under the rear bumper and out again.

LED Rear Combination Lamps

The L-shaped rear combination lamps reinforce the ES's Lexus identity. The three-dimensional design was engineered to combine high visibility with distinctive style.



Rear Bumper

The character lines of the side silhouette converge to give the rear a dynamic presence. Combining high rigidity with excellent recyclability, the rear bumper accentuates this presence, endowing it with a strong sense of stability.



Acoustic Glass

The windshield and front door windows are fitted with a special acoustic glass with excellent sound-insulating properties.*²



*Available for ES 250 Luxury only.

Note: Vehicles pictured and specifications detailed in this catalogue may vary from models and equipment available in your area. Please inquire at your local dealer for details on the availability of features.

*¹ Available for ES 250 Luxury only.

*² ES 250 Luxury comes with additional Acoustic Rear Door Windows.

Note: Vehicles pictured and specifications detailed in this catalogue may vary from models and equipment available in your area. Please inquire at your local dealer for details on the availability of features.



Meter/EMV Display/Colour Head-Up Display (HUD)*

The 12.3" EMV (Electro Multi-Vision) display shows incoming hands-free mobile calls, the audio system and other information, and coordinates the display of select information with the multi-information display integrated into the 7" colour TFT (Thin Film Transistor) Optitron meter and the large colour Head-Up Display (HUD) positioned in the driver's

line of sight. To allow the driver to concentrate on driving, the layout is designed with all controls within easy reach, minimising the need for changes in posture or line of sight. The EMV display shows information such as maps in full-screen mode without limiting the driver's ability to access the information, even when displaying the menu and map at the same time.

*Available for ES 250 Luxury only.

Note: Vehicles pictured and specifications detailed in this catalogue may vary from models and equipment available in your area. Please inquire at your local dealer for details on the availability of features.



Remote Touch Interface

The interface is designed for smartphone-style operation. The cursor can be adjusted to stop following flick operation to suit the user's preferences. Pinch-in and pinch-out operation enables continuous in and out zooming.

4-way Driver and Front Passenger Lumbar Support*

The front seatbacks feature a design with separate upper and lower sections to provide a continuous flow through to the console and armrest. Integrated lumbar support for the lower back helps reduce fatigue on long drives. Switches control 4-way horizontal and vertical adjustments, enabling the driver and front seat passenger to tailor the optimal position to suit their physiques.



Wireless Charger*

For wireless charging of batteries, simply place Qi-compatible smartphones and electronic devices on the charging tray in the centre console box.



*Available for ES 250 Luxury only.

Note: Vehicles pictured and specifications detailed in this catalogue may vary from models and equipment available in your area. Please inquire at your local dealer for details on the availability of features.



Lexus Climate Concierge*
The powerful energy-efficient air conditioning system provides 3-zone independent control of the temperature in the driver's seat, front passenger's seat and rear seats. A control panel for rear seat passengers is conveniently located in the rear centre armrest.

Rear Armrest and Multi-operation Panel*
The rear seats feature a centre armrest with convenient cupholders. An integrated control panel lets occupants adjust the audio system, seat recline and other settings, further enhancing passenger pleasure.



Boot-through
Boot-through functionality enables the carrying of longer items that won't fit in the boot.



Power Rear Seats*
The reclining power rear seats provide up to 8° of recline to create an even more relaxing space.



LED Ambient Illumination*
Subtle Lexus hospitality is seen in the elegant and functional design of the instrument panel and its real stitching detail. The use of LED ambient illumination to indirectly light the lower instrument panel and front and rear door trim, creates a feeling at night of being gently enveloped. The brightness can be adjusted to suit your preference.



Rear Door/Rear Window Sunshades*
Sunshades for the rear door and rear quarter windows, and a power sunshade for the rear window provide shade and privacy in the rear seats. For a clear



field of view when reversing, the rear window sunshade automatically lowers when reverse gear is engaged.

*Available for ES 250 Luxury only.

Note: Vehicles pictured and specifications detailed in this catalogue may vary from models and equipment available in your area. Please inquire at your local dealer for details on the availability of features.

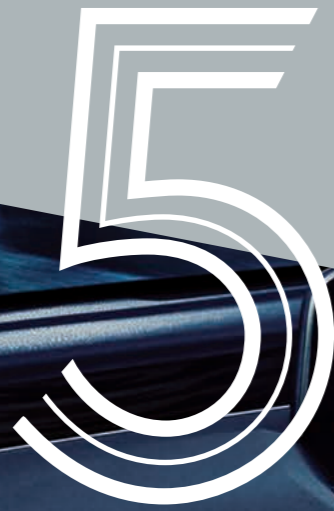
*Available for ES 250 Luxury only.

Note: Vehicles pictured and specifications detailed in this catalogue may vary from models and equipment available in your area. Please inquire at your local dealer for details on the availability of features.

SAFETY



The ES's exciting performance is underpinned by active and passive safety measures that utilise advanced technologies to deepen your peace of mind.





LEXUS SAFETY SYSTEM+



Pre-Collision System (PCS)

When the millimetre-wave radar and monocular camera sensors detect a vehicle ahead and determine that a collision is likely, it alerts the driver and activates pre-collision brake assist when the driver depresses the brake pedal. If the driver cannot depress the brake pedal, it activates the pre-collision brakes to help avoid a collision or mitigate the impact force.



Adaptive High-beam System (AHS)*

The system detects the headlamps of oncoming vehicles, tail lamps of preceding vehicles, and brightness of the surrounding area. When it detects a vehicle within the area illuminated by the high beams, it disables/enables 24 LEDs on each side to minutely adjust the lit and unlit areas, optimising light distribution. By partially blocking light from the high-beam headlamps so that they don't directly project onto a preceding or oncoming vehicle, the system helps contribute to safe driving at night.

Lane Keeping Assist

When Lane Keeping Assist is activated, it alerts the driver of possible lane or road deviations and helps assist steering to avoid them. In addition, while driving on highways and automobile-only roads with Dynamic Radar Cruise Control (DRCC) with Stop & Go Function activated, it helps assist steering to keep the vehicle in the lane.



Dynamic Radar Cruise Control (DRCC) with Stop & Go Function

In addition to maintaining a constant speed, Dynamic Radar Cruise Control (DRCC) with Stop & Go Function uses the millimetre-wave radar and camera sensors to detect a vehicle driving ahead and maintain an appropriate distance between vehicles. Whether at highway speeds or in stop-and-go traffic, DRCC helps to detect if you get too close and automatically slow your vehicle - even to a complete stop.



Parking Support Alert (PKSA)

PKSA detects stationary objects such as walls in the direction of travel, as well as vehicles and pedestrians approaching from behind while reversing*¹, and alerts the driver on the display and with a buzzer in the event that a collision is determined to be likely.



Blind Spot Monitor (BSM) System

When the quasi-millimetre-wave radars in the rear bumper detect vehicles in adjacent lanes that aren't visible in the door mirrors, the system activates an LED warning indicator in the relevant door mirror the moment a vehicle enters this blind spot.



Panoramic View Monitor (PVM)*³

To help check areas surrounding the vehicle that are difficult to see from the driver's seat, the system shows a bird's-eye view of the vehicle in real time on the 12.3" display, using a composite image taken by cameras mounted on the front, sides, and rear of the vehicle.*⁴



10 SRS (Supplemental Restraint System) Airbags

The ES features dual-stage SRS airbags (front seats), SRS knee airbags (Front seats), SRS side airbags (front and outboard rear seats) and SRS curtain shield airbags (front and rear seats).*²

*¹ Detection of vehicles and pedestrians approaching from behind while reversing is not available in some markets. Please inquire at your local dealer for details.

*² The SRS airbags are supplemental devices to be used with the seatbelts. The driver and all passengers in the vehicle must wear their seatbelts properly at all times. Never install a rear-facing CRS (Child Restraint System) on the front passenger's seat. For a forward-facing CRS, it is recommended you use it in the rear seats. Please do not use accessories for the seats which cover the parts where the SRS side airbags should inflate. Such accessories may prevent the SRS side airbags from activating correctly, causing serious injury (Lexus genuine seat covers are specifically designed for models equipped with the SRS side airbags. To find out about availability in your area, please inquire at your local dealer). The photo shows all the SRS airbags activated for display purposes only (the SRS side and curtain shield airbags only inflate on the side of the collision in an actual accident). For details on these and other important safety features, be sure to read the Owner's Manual carefully.

*³ Available for ES 250 Luxury only.

*⁴ The area the cameras can show is limited. Be sure to visually check your surroundings before you proceed.

Note: The systems functions may not operate properly depending on the weather, road and vehicle conditions or other factors. Be sure to read the Owner's Manual carefully. Do not overly rely on these systems, as there is a limit to the performance they can provide. The driver is always responsible for paying attention to the vehicle's surroundings and driving safely.

Vehicles pictured and specifications detailed in this catalogue may vary from models and equipment available in your area.

Please inquire at your local dealer for details on the availability of features.

*Available for ES 250 Luxury only.

Note: Vehicles pictured and specifications detailed in this catalogue may vary from models and equipment available in your area. Please inquire at your local dealer for details on the availability of features.

TAKUMI



Our Takumi craftsmen strive for perfection in every aspect of their work, actively seeking enhancements by applying constant care and dedication to their craftsmanship, blending their craftsmen's skills with the power of technology to better anticipate the future.



Note: Vehicles pictured and specifications detailed in this catalogue may vary from models and equipment available in your area. Please inquire at your local dealer for details on the availability of features.



Note: Vehicles pictured and specifications detailed in this catalogue may vary from models and equipment available in your area. Please inquire at your local dealer for details on the availability of features.

SPECIFICATIONS

ENGINE & TRANSMISSION		ES 250 Premium	ES 250 Luxury
Model		A25A-FKS	
Type		16-valve, DOHC, 4-Cylinders, In-line Type	
Variable Valve Timing		VVT-iE (Intake), VVT-i (Exhaust)	
Displacement	cc	2,487	
Bore x Stroke	mm	87.5 x 103.4	
Compression Ratio		13.0:1	
Max. Output	hp / rpm	204 / 6,600	
Max. Torque	Nm / rpm	247 / 5,000	
Transmission		Direct Shift 8-speed Automatic Transmission	
Drive System		Front Wheel Drive	

PERFORMANCE			
Top Speed	km/h	210	
Acceleration 0-100 km/h	sec	9.1	
Fuel consumption (Combined)	km/L	15.1	
CO ² Emission (Combined)	g/km	150	
Emission Standard		EURO 5	

CHASSIS			
Drive Mode Selector		ECO / NORMAL / SPORT	
Suspension	Front / Rear	MacPherson Strut / Trailing Wishbone	
Stabiliser	Front / Rear	With / With	
Brakes	Front / Rear	Ventilated Discs / Solid Discs	
Performance Dampers		Without	With
Auto Start/Stop System		With	
Electronic Power Steering (EPS)		With	
Tyres		235/45R18	
Wheels		18" Aluminium in Medium Gray Metallic Finish	18" Aluminium Noise-reducing Wheels in Hyper Chrome Metallic Finish
Min. Turning Radius	m	5.9	

DIMENSIONS & WEIGHT			
Overall	Length	mm	4,975
	Width (Without Mirror)	mm	1,865
	Height	mm	1,445
	Wheelbase	mm	2,870
Tread	Front	mm	1,590
	Rear	mm	1,600
Kerb Weight		kg	1,660
Gross Vehicle Weight		kg	2,100
Min. Ground Clearance		mm	154
Boot Capacity (VDA)		Litre	420
Fuel Tank Capacity		Litre	60

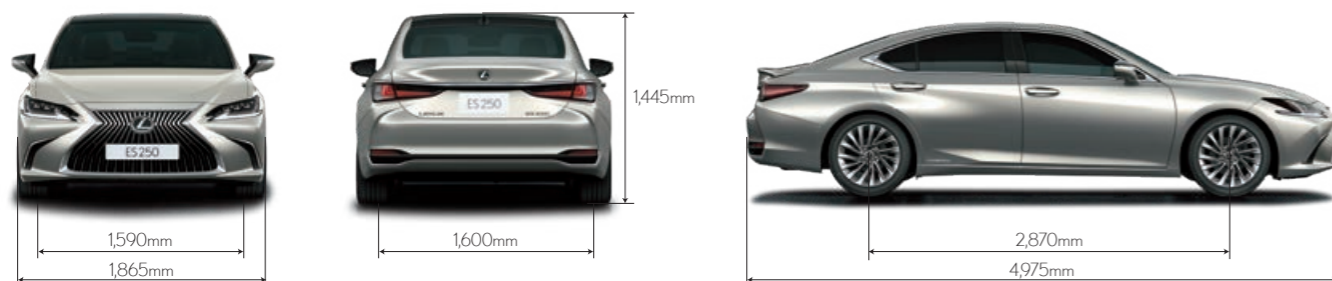
EXTERIOR			
Headlamps	Type	Bi-LED Projector	Ultra Compact 3-beam LED Projector
	Automatic High Beam	With	With Adaptive High-beam System (AHS)
	Leveling	Automatic	
	Washer	Without	With
	Daytime Running Lights	LED (L-shaped Design)	
	Cornering Lamps	With	
Smart Entry & Start System		With (Additional Smart Card Key)	
Turn Signal Lamps	Front / Rear	Bulb / Bulb	LED (Sequential Type) / Bulb
Moonroof		With	

EXTERIOR		ES 250 Premium	ES 250 Luxury
Rear Combination Lamps		With (LED)	
Rear Fog Lamp		With	
Wipers	Intermittent Wiper	With Rain Sensor	
Side Mirrors		Auto-fold, Memory, Reverse-linked & Blind Spot Monitor (BSM)	
Power-assisted Bootlid		Without	With (Hands-free Kick-open Function)

INTERIOR					
Finishing		Wood Trim & Leather			
Steering	Type	3-spoke, Leather-wrapped with Wood Finish & Paddle Shifters			
	Tilt and Telescopic	Auto (With Memory)			
	Multi Function Switch	With Audio, Telephone, DRCC, Lane Tracing Assist & Multi-Info Display (MID) Switch			
Digital Combination Meter		With (7" Colour TFT)			
Multi-Info Display (MID)		With			
Cruise Control		Dynamic Radar Cruise Control (DRCC) with Stop & Go Function			
Air-conditioner	Type	Auto, 2-zone	Auto, 3-zone		
	Air-conditioner Rear Duct	With			
	Lexus Climate Concierge	With			
	Clean Air Filter	With Pollen Filter & Nanoe™ Negative Ion Generator			
Inside Rear View Mirror		Electrochromic			
Ambient Lighting		Without	With		
Lamps	Illuminated Entry System	With			
	Front & Rear Personal Lamp	With			
	Glove Box Lamp	With			
	Room Lamp	With			
	Door Courtesy Lamp	With			
	Luggage Room Lamp	With			
	Sun Visors	Driver	With Mirror, Lamp & Ticket Holder		
Front Passenger		With Mirror & Lamp			
Sun Shade	Rear Window	Automatic Up/Down			
	Side Rear Door Window	Without	With		
Power Windows		With (Auto Up/Down)			
Audio System		Pioneer 10-Speaker System, AM/FM Tuner, Single CD/DVD, MP3, WAV, FLAC, ALAC OGG Vorbis, WMV, AVI, USB Video, Compatible with Miracast®, Bluetooth® and Smartphone Linking			
External Audio Terminals		With AUX Mini Jack & 2 USB Ports			
Accessory Socket		2 (Inside Console Box & Console Rear End Panel)			
Display Screen		8"	12.3"		
Head-Up Display (HUD)		Without	With		
Navigation System		Without	With		
Remote Touch Pad Controller		With			
Wireless Charger		Without	With		
Seat	Material		NuLuxe Leather	Semi-Aniline Leather	
		Front	Power Adjustment	D: 8-way P: 8-way	D: 10-way P: 8-way
		Lumbar Support	With (Auto 2-way)	With (Auto 4-way)	
		Driver Cushion Length Adjuster	Without	With	
		Memory Function	Driver Only	Driver & Passenger	
		Power Easy Access	With		
		Seat Ventilation	With (Driver & Front Passenger)		
		Seat Heater	Without	With (Driver & Front Passenger)	
		Back Pockets	With (Driver & Front Passenger)		
	Rear	Type	Fixed	Power Reclining (2-way)	
		Seat Heater	Without	With	
		Armrest	With (With Cup Holder & Small Item Storage)	With (Cup Holder, Small Item Storage & Rear Seat Control Panel)	

SPECIFICATIONS

INTERIOR		ES 250 Premium	ES 250 Luxury
Shift Lever		Leather-wrapped	
Parking Brake		Electronic Parking Brake with Auto Brake Hold	
Storage	Centre Console Box		With
	Glove Box		With
	Front & Rear Door Pockets		With
	Cup Holders		With
SAFETY			
(Active)			
Lexus Safety System+	Front Pre-Collision System (PCS)		With
	Dynamic Radar Cruise Control (DRCC)		With Stop & Go Function
	Lane Keeping Assist	Lane Tracing Assist (LTA) and Lane Departure Alert (LDA)	
	Automatic High Beam	With	With Adaptive High-beam System (AHS)
Anti-lock Braking System (ABS)	With Electronic Brake Distribution (EBD) & Brake Assist (BA)		
Drive Start Control		With	
Active Cornering Assist (ACA)		With	
Vehicle Stability Control System (VSC)	With Traction Control (TRC) & Hill-start Assist Control (HAC)		
Tyre Pressure Warning System		With	
Blind Spot Monitor (BSM) & Rear Cross Traffic Alert (RCTA) with Braking Function		With	
Emergency Brake Signal		With	
Panoramic View Monitor (PVM)		Without	With (Side Clearance View, Cornering View & See-through View)
Reverse Parking Assist Monitor		With	
Clearance & Back Sonar		With	
(Passive)			
SRS Airbags		10	
	Front	With Dual Stage	
	Knee	With (Driver & Front Passenger)	
	Front Side	With	
	Curtain Shield	With	
	Rear Side	With	
Pop-Up Hood (PUH)		With	
Whiplash Injury Lessening (WIL)		With	
Seatbelts	Driver & Front Passenger	3-point Emergency Locking Retractor (ELR), Pre-tensioner, Force Limiter and Tension Reducer	
	Rear (Left & Right)	3-point Emergency Locking Retractor (ELR), Pre-tensioner and Force Limiter	
	Rear (Centre)	3-point, Emergency Locking Retractor (ELR)	
ISOFIX Child Seat Tethers		With	
SECURITY			
Alarm System		Siren with Internal Battery and Intrusion Sensor	



OWNING A LEXUS IS A JOURNEY IN ITSELF, ONE THAT IS JUDGED NOT BY MILEAGE BUT BY THE COUNTLESS PRICELESS MOMENTS.

BEGIN YOUR JOURNEY THE RIGHT WAY WITH QUALITY SERVICES DESIGNED TO ENHANCE YOUR LEXUS EXPERIENCE.



LEXUS believes that perfection lies in the details. When you purchase a LEXUS, you will experience service like no other. LEXUS CAPITAL offers you flexible financial services that enable you to be in full control of your finances, as always. Applying for financing can be handled quickly and conveniently at all LEXUS showrooms.



LEXUS ASSIST is a 24-hour roadside assistance service provided by LEXUS. You're assured of reliable assistance via this exclusive programme aimed at creating a hassle-free driving experience.



LEXUS INSURANCE is a comprehensive motor insurance packaged by LEXUS to provide LEXUS owners with tailored insurance coverage for damages to the owner's vehicle as well as any liabilities incurred by the third party.



LEXUS ACCESS is a comprehensive vehicle leasing programme designed to bring you even closer to driving a LEXUS. Complementing our Flexi Plan and Islamic Financing Plan, LEXUS ACCESS offers you yet another option to experience the perfection embodied by a LEXUS.



Note:

- LEXUS MALAYSIA, a division of UMW Toyota Motor Sdn. Bhd. reserves the right to alter any details of specifications and equipment without notice. Details of specifications and equipment are also subject to change to suit local conditions and requirements.
- Vehicle, equipment and specifications pictured in this catalog may vary from models available locally.
- Vehicle body and accessory colors might differ slightly from the printed photos in the leaflet.
- 5-years warranty from the date of first registration with unlimited mileage. Terms and conditions apply.

Terms and conditions apply.



LEXUS MUTIARA DAMANSARA No. 6, Jalan PJU 7/2, Mutiara Damansara, 47800 Petaling Jaya, Selangor. Tel: 03-7710 5655.

LEXUS SUNGAI BESI No. 314, Jalan Sungai Besi, 57100 Kuala Lumpur. Tel: 03-9222 2268.

LEXUS PENANG No. 26, Jalan Sultan Ahmad Shah, 10050 Georgetown, Pulau Pinang. Tel: 04-250 3888.

LEXUS IPOH No. 91, Jalan Tunku Abdul Rahman (Off Jalan Kuala Kangsar), 30010 Ipoh, Perak. Tel: 05-506 6688.

LEXUS MALAYSIA, a division of UMW Toyota Motor Sdn. Bhd. reserves the right to alter any details without notice.

LEXUS JOHOR BAHRU No. 77, Jalan Geroda 1, Off Jalan Cenderawasih, 80350 Larkin, Johor Bahru, Johor. Tel: 07-233 7777.

LEXUS KUCHING Lot 12648, Block 16, Jalan Datuk Tawi Sli, KCLD, 93250 Kuching, Sarawak. Tel: 082-466 199.

Toll Free Line: 1-800-88-LEXUS (53987) (Monday - Friday, 8.00am - 5.30pm)

LEXUS MALAYSIA, a division of UMW Toyota Motor Sdn. Bhd. reserves the right to alter any details without notice.

EXTERIOR COLOURS



Sonic Quartz <085>



Platinum Silver Metallic <1J4>



Sonic Titanium <1J7>



Graphite Black Glass Flake <223>



Red Mica Crystal Shine <3R1>



Ice Ecrú Mica Metallic <4X8>



Deep Blue Mica <8X5>

WHEELS



18" Aluminium Wheels
ES 250 Premium



18" Aluminium Noise Reduction Wheels
ES 250 Luxury

INTERIOR COLOURS

SEMI-ANILINE LEATHER (ES 250 LUXURY)



Topaz Brown



Black

NULUXE LEATHER (ES 250 PREMIUM)



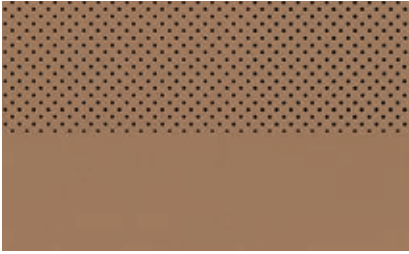
Topaz Brown



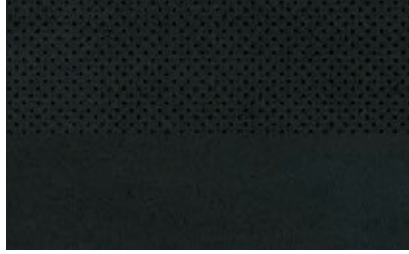
Black

SEAT MATERIALS

SEMI-ANILINE LEATHER (ES 250 LUXURY)



Topaz Brown

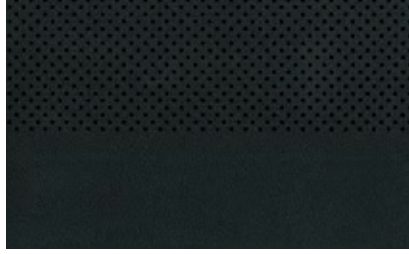


Black

NULUXE LEATHER (ES 250 PREMIUM)

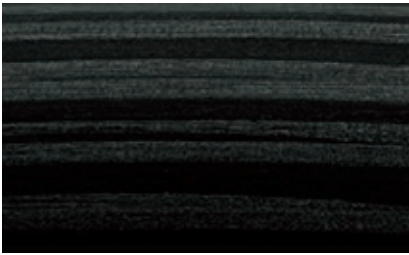


Topaz Brown



Black

TRIM



Shimamoku (Black)

