

NEW
XPANDER
LIVE BEYOND LIMITS



**MITSUBISHI
MOTORS**

Drive your Ambition



LIVE BEYOND LIMITS



UNLOCK YOUR NEW LIFESTYLE WITH NEWFOUND FREEDOM.

XPANDER is a bold statement you can't ignore. Designed for those who wish to stand out from the rest. Because for you, your lifestyle is defined by your goals and your dreams. XPANDER is the 7-seater that enables you to live beyond limits.



Visual shown are for illustration purposes only. Specifications may vary according to variant/market. Please consult your local Mitsubishi Motors dealer for more information.

XCITING STYLE



FIRST-IN-CLASS



STYLISH BEYOND THE ORDINARY.

XPANDER never fails to impress with its bold profile & sleek dynamic lines. It is a crossover that's truly a class of its own.

- 1. Dynamic Shield Design**
A powerful first impression that projects confidence and protection for both passenger and pedestrian. Wide flared fenders naturally add toughness to its powerful SUV-inspired design.
- 2. Crystal LED Position Lamps**
Sits at a higher position to offer improved night visibility.
- 3. LED Headlamps**
Maximises driver's vision by providing a wide coverage of illumination.
- 4. L-Illumination LED Tail Lamps**
A progressive design that extends onto the tailgate, it enhances safety by improving visibility to other road users.
- 5. Dual Tone Alloy Wheels**
These 16" rims fit right in with the XPANDER's dynamic looks while enhancing its sportiness.



Visual shown are for illustration purposes only. Specifications may vary according to variant/market. Please consult your local Mitsubishi Motors dealer for more information.

XCEPTIONAL COMFORT



COMFORT BEYOND YOUR EXPECTATIONS.

Go the distance in absolute comfort, XPANDER lets you feel completely at ease in day-to-day drives or on journeys beyond the city.



FIRST-IN-CLASS



1. 9" Multimedia Display with Apple CarPlay & Android Auto Ready
Access your favourite apps such as Waze & Spotify through the large capacitive touch-screen without a need for a phone holder.

2. High Contrast Meter with Multi Information LCD Display
Get all the information you need on the road from a clear and easy-to-read display.

3. Cruise Control
Driving long distances is now more comfortable and less tiring. XPANDER assists your drives by maintaining a steady throttle.

4. Tilt & Telescopic Steering
Adjust to the optimum height & position for a comfortable driving posture.

5. Stylish Leatherette Seats*
These easy-to-maintain seats make your journeys comfortable and complement the premium-looking interior of the XPANDER.

6. Rear Air Circulator
Everyone enjoys a cool ride, even those at the back. Rear passengers get to control their own fan speed with the 4-speed fan adjusters.

7. Keyless Operation System (KOS)
Easily unlock doors and start your engine with the advanced Keyless Operation System.

*MMM Authorised Dealer Package.



XTRAORDINARY SPACE



SPACIOUS BEYOND THE AVERAGE.

Never worry about space again. XPANDER's cabin has been designed with precision to optimise every inch of space.

- 1. Glove Box with Double Compartment**
Provides ample room for your things for better organisation.
- 2. 2nd Row Side Pocket and Cup-holder**
From drink bottles to small containers, anything you put in here stays firmly in place.
- 3. Smartphone Storage**
A space for your phone or other items with USB ports and a charging port within close proximity.
- 4. Centre Console Box with Sliding Lid**
Store more things or keep your valuables away from prying eyes. It also comes with a 12V socket to power up your devices.
- 5. Under Seat Multi-Purpose Storage**
Convenient tray that allows you to store your shoes and other items without getting the interior dirty.
- 6. 2nd Row Back Seat Pockets**
Keep the journeys exciting with these convenient pockets to put your books, tablet and more.
- 7. 3rd Row Side Pocket and Cup-holder**
Even those at the back get a space to store and charge their phone with a 12V socket, plus it comes with a drink holder.
- 8. Cargo Floor Box with Lid**
Store your wet or soiled items in this hidden storage without taking up additional boot space.
- 9. Xpandable Seat Configuration**
Store more or bigger items with XPANDER's flexible seat configurations.



Flexible 7-seater Storage

3rd-row Seat Fold Flat

2nd & 3rd-row Seat Fold Flat

EFFICIENT BEYOND THE REST.

Powered by Mitsubishi's ever-reliable MIVEC engine, XPANDER provides a comfortable drive for any occasion, for any destination.



105 PS MAX POWER
141 NM MAX TORQUE



205mm

XTRAORDINARY PERFORMANCE



5.2m



1. MIVEC Engine

The highly durable MIVEC Aluminium Block Engine combines the perfect balance of power & efficiency. It delivers a smooth performance with low fuel consumption and reduced noise.

2. High Ground Clearance

Rough roads, light off-road terrain or even flash floods, XPANDER's high ground clearance makes it versatile enough to handle these.

3. Turning Radius

This makes any turning done effortlessly with easier maneuverability, especially in tight spaces such as shopping mall parking bays or small & winding country-side roads.

4. Suspension Optimised for Comfort

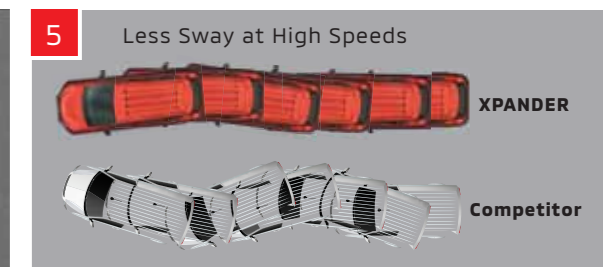
Optimised to deliver a stable and comfortable drive, especially during cornering or windy roads. It features shock absorbers with high-performance valves that reduce vibrations.

5. Better Driving Stability

Even on high speeds, XPANDER holds its ground. The Tower Strut and Rear Crossmember improve stability and handling.



4



5

Less Sway at High Speeds

XPANDER

Competitor



SAFETY BEYOND THE ESSENTIALS.

Stay safe in all your travels. XPANDER always gives you a clear vision of your surroundings while keeping you from harm's way.

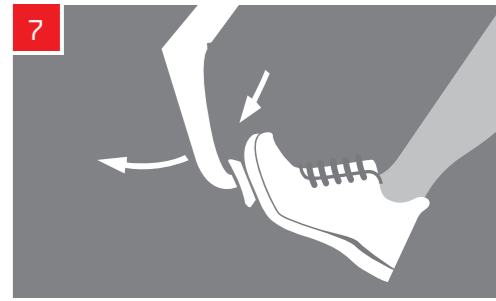
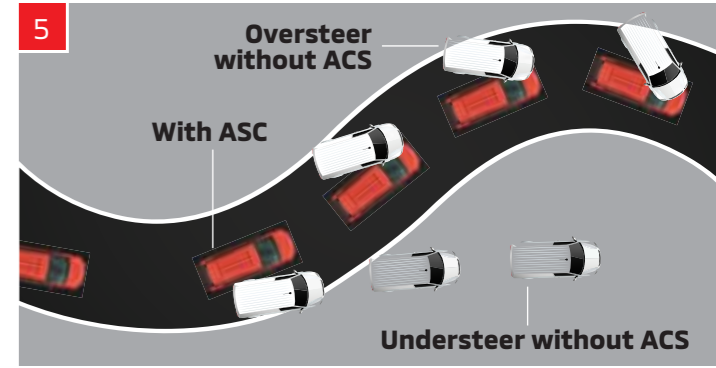
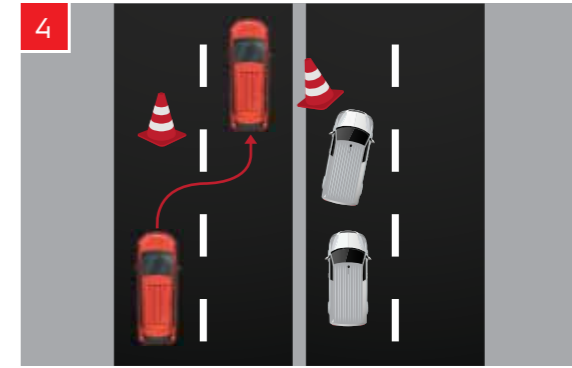
XCELLENT SAFETY



- 1. All-Round Monitor (ARM)***
Creates a composite bird's-eye view of your vehicle surroundings to aid parking and maneuvering, especially for blindspots.
- 2. Driving Video Recorder (DVR)***
Captures every moment or incident in HD recording while you're on the move.
- 3. SRS Airbags**
Protects the driver and the front passenger in a collision by absorbing most of the impact.
- 4. Anti-lock Braking System (ABS) & Electronic Brake-force Distribution (EBD)**
ABS maintains maneuverability around obstacles while EBD distributes brake-force to reduce stopping distance.

*MMM Authorised Dealer Package.

- 5. Active Stability Control (ASC) with Traction Control (TC)**
ASC recognises oversteer or understeer and automatically applies brake-force to maintain control, while traction control helps to maintain traction on slippery or rugged surfaces.
- 6. Hill-Start Assist (HSA)**
Prevents the vehicle from rolling backwards on an incline by momentarily maintaining the brake-force before accelerator is applied.
- 7. Brake Assist System (BAS)**
During emergency situations, automatically applies more than usual braking force to ensure a quicker stop.
- 8. Rest Reminder**
Reminds the driver to rest during long journeys and arrive at the destination safely.



Visual shown are for illustration purposes only. Specifications may vary according to variant/market. Please consult your local Mitsubishi Motors dealer for more information.

SPECIFICATIONS

Model / Variant		Xpander	
Engine & Transmission			
Engine Type	1.5L MIVEC DOHC 16 Valve		
Displacement	cc	1,499	
Max. Output (EEC Net)	PS /rpm	105 / 6,000	
Max. Torque (EEC Net)	Nm /rpm	141 / 4,000	
Transmission	4-speed Automatic		
Chassis & Suspension			
Suspension	Front	MacPherson Strut Coil Springs with Stabilizer Bar & Built-in Strut Bar	
	Rear	Torsion Beam	
Brake	Front	Ventilated Disc	
	Rear	Drum	
Steering	Rack & Pinion with Electric Power Steering (EPS)		
Tyres	205/55 R16		
Tyres & Rims	16" Dual Tone Alloy Design		
Dimensions			
Overall	Length	mm	4,475
	Width	mm	1,750
	Height	mm	1,730
Wheelbase			mm
			2,775
Track	Front	mm	1,520
	Rear	mm	1,510
Weight	Kerb	kg	1,275
	Gross	kg	1,780
Min. Turning Radius	m	5.2	
Fuel System	Electronically Multi-Point Injection		
Fuel Tank Capacity	litre	45	

STANDARD EQUIPMENT

Exterior Features			
Headlamps	Type	Auto LED	
	Daytime Running Lights (DRL)	With	
	Welcome Light and Coming Home Light System	With	
	Levelling Device	With (Manual)	
Door Mirrors	Power Adjustable & Fold with Integrated LED Turn Indicators		
Door Handles	Chrome		
Beltline Moulding	Chrome		
Windshield	Front	Sound Insulation Film	
Rear Spoiler	With (Integrated type & LED High-Mount Brake Lamp)		
Antenna	Shark Fin		
Wipers	Front	With (Auto & Variable Intermittent)	
	Rear	With	
Interior Features			
Push Start Ignition	With		
Meter Panel	Type	High-contrast	
	Multi-Information Display (MID)	With (4.2" TFT Color LCD)	
	Eco Drive Assist	With (Score Indicator)	
Audio System	Type	9" Touch Screen, USB, Bluetooth with Apple Car Play & Android Auto Ready	
	Speakers	6	

Interior Features			
Smart Phone Storage	Front	With	
Center Console Storage			With (Sliding Lid)
Air Conditioning	Front	With	
	Rear	With	
Steering Wheel	Type	Leather-wrapped with Audio & Cruise Control Switches	
	Adjustment	Tilt & Telescopic	
Cruise Control			With
Power Windows			With (Driver's Side Auto Up/Down with Anti-Pinch)
Smart Storage	Rear Boot	With (Cargo Floor Box with Lid)	
Seats	Material	Leatherette Seats	
	Front Adjustments	Manual (Driver) with Height Adjustment Manual (Passenger)	
Underseat Multi-Purpose Storage			With
Second Row Adjustments			One Touch Tumble Feature with Sliding Function
Storage Pockets			With
Third Row Adjustments			With (Recline only)
Flat Folding Seats			With

SAFETY

Active		
Anti-Lock Braking System (ABS)	With	
Electronic Brake-Force Distribution (EBD)	With	
Brake Assist (BA)	With	
Active Stability Control (ASC)	With	
Traction Control (TC)	With	
Brake Override System (BOS)	With	
Rest Reminder	With	
Hill-Start Assist (HSA)	With	
All-Round Monitor (ARM)	With (Guide Lines)	
Driving Video Recorder (DVR)	With	
Emergency Stop Signal System (ESS)	With	
Seatbelt Reminder	Driver & Passenger	
Reverse Sensor	With	
High Mount Stop Lamp	With (LED)	
ISOFIX Child Restraint Mounting	With Top Tether (x2)	
Child Lock Protection	With	
Passive		
SRS Airbags	Dual-front SRS Airbags	
RISE Body	With	
Side Impact Door Beams	With	
Seatbelts	Front	3-point ELR with Double Pretensioner (Driver) & Force Limiter
	Rear	3-Point ELR (x3)
Collapsible Steering Column	With	
Collapsible Brake Pedal	With	

SECURITY

Alarm System with Immobiliser	With
-------------------------------	------



● Red Metallic
○ Quartz White Pearl

● Titanium Gray Metallic
● Diamond Black Mica

5 YEARS WARRANTY UNLIMITED MILEAGE

Visual shown are for illustration purposes only. Specifications may vary according to variant/market. Please consult your local Mitsubishi Motors dealer for more information.



MITSUBISHI MOTORS

Exclusive Distributor:

Mitsubishi Motors Malaysia Sdn Bhd (680028-M)
Level 6, Building A, Dataran PHB, Saujana Resort, Seksyen U2, 40150 Shah Alam, Selangor.

www.mitsubishi-motors.com.my |   MitsubishiMotorsMalaysia

1. Mitsubishi Motors Malaysia reserves the right to alter any details of specifications and equipment without prior notice.
2. Details of specifications and equipment are also subject to change to suit local conditions and requirements.
3. Vehicles and specifications in this brochure may vary from models available locally. Vehicle body and accessory colours may differ slightly from printed photos in this brochure.
4. Some accessories upgrade are by Mitsubishi Motors Malaysia authorised dealers.
5. XPANDER is assembled by Mitsubishi Motors Malaysia Sdn. Bhd. under the license and technical assistance by MITSUBISHI MOTORS CORPORATION.

Authorised Dealer:

