



PEUGEOT

LET YOUR  
BODY DRIVE



NEW PEUGEOT 208

MOTION & EMOTION



## SHE ILLUMINATES, SHE SHINES, SHE FOLLOWS ME HOME !

*Angie, 23*

The "Follow Me Home" function allows your car's headlights to stay on for a few seconds after you've used the remote to lock or unlock the car. This helps to illuminate your path, alerting you to everything & keeping you safe in any environment.



## ME. MY STYLE. MY RIDE...

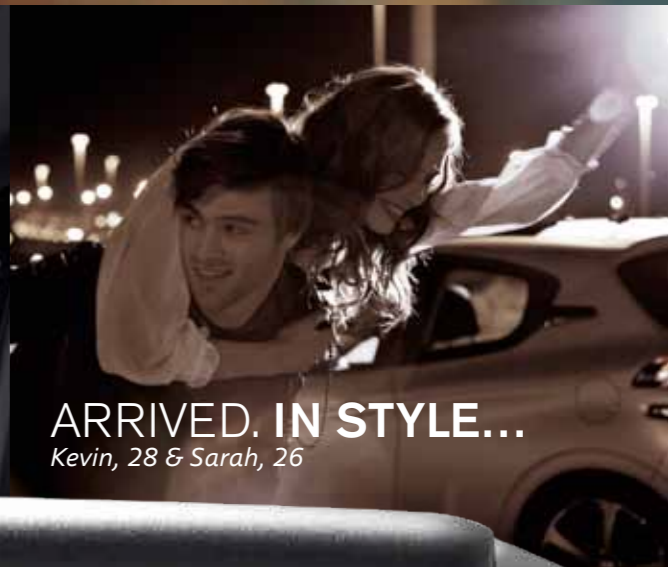
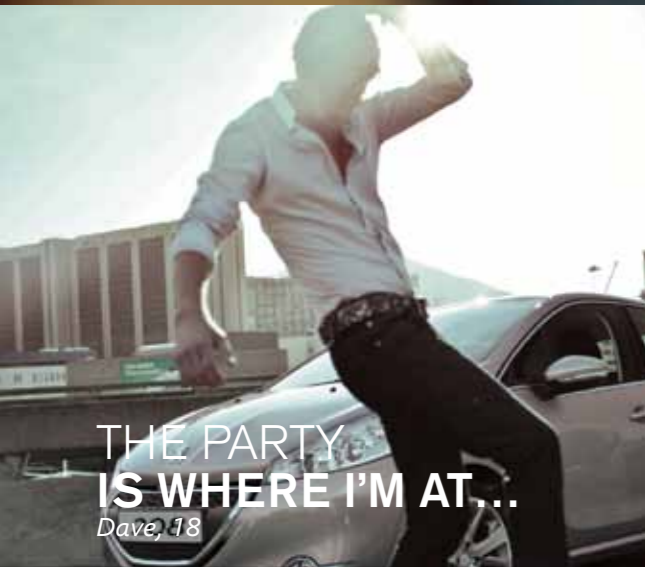
*Daniel, 24*

Marque of a new generation, the Peugeot 208 has taken a giant leap forward in transforming aesthetics, performance & practicality into a new signature lifestyle code. Athletic, fun and stylish it's the embodiment of a generation that values individuality & style. Let it awaken your senses and let your body drive.



Front & Rear LED Signature Lighting





MOONLIGHT DRIVE...  
JUST LIKE I ORDERED.  
Ben, 24



Interactive HD Colour Touchscreen

Ergonomically & stylishly designed, the interactive HD touch screen allows easy access to the various functions: radio, Bluetooth hands-free kit or playing music files via a USB connection or audio streaming.



Sports Leather Steering Wheel with Controls



Arkamys 3D Sound Audio System with 6 Speakers



# A LOT OF SPACE, A LOT FOR ME...

Sasha, 20

Electric Folding Mirrors



Centre Armrest with Storage Compartment



USB, Bluetooth & Audio Streaming Connectivity



Rear Parking Aid with Audio Visual Assistance & 4 Sensors



# THAT'S RIGHT! SAFETY FIRST...

Helen, 22

- 6 Airbags • Advanced Electric Power Steering System (EPS) • Anti Lock Braking System (ABS)
- Emergency Brake Assist (EBA) • Electronic Brake Distribution (EBD)
- Electronic Stability Programme (ESP) with Anti Skid Regulator (ASR) and Dynamic Stability Control (DSC)
- Hill Start Assist • Very High Strength Steel (VHSS) body structure • Deadlocking
- Electric Child safety door lock • Peugeot rolling code transponder immobiliser security
- Auto hazard light on de-acceleration • Seatbelt alarm (audio) for all passengers
- 2 X ISOFIX anchorage points at rear • 3 X 3-point rear seat belt • Euroncap 5 star safety rating



Advanced Electric Power Steering System (EPS)



2 X ISOFIX anchorage points at rear



6 Airbags



# GREEN IS THE NEW BLACK....

Jack, 23

# 25%

OF TOTAL POLYMERS COME FROM RECYCLED OR NATURAL MATERIALS

moving 208 to a new level in terms of eco-design

25 % Green Materials 170 kg of polymers (excluding rubber)

World's first entirely recycled rear bumper Allow savings of 1,600 tonnes of oil in a year.



## DIMENSIONS



## SPECIFICATIONS

Peugeot 208 Specifications	5 door	3 door
<b>ENGINE</b>		
Type	4 In-line Cylinders, DOHC 16 Valve, VTi (Dual Variable Valve Timing & Lift)	
Fuel Supply System	Electronic Multi Point Fuel Injection System	
Displacement (cc)	1598	
Max Horsepower (ps @ rpm)	122 @ 6000	
Max Torque (Nm @ rpm)	160 @ 4250	
<b>TRANSMISSION</b>		
Type	Auto Adaptive Gearbox with Tiptronic And Sport Mode	
<b>BRAKING</b>		
Braking System Type (Front)	Ventilated Discs	
Braking System Type (Back)	Solid Discs	
<b>SUSPENSION</b>		
Suspension System (Front)	MacPherson Struts, Anti Roll Bar	
Suspension System (Back)	Trailing Arm with Deformable Cross-member Axle	
<b>STEERING</b>		
Type	Advanced Electric Power Steering System	
<b>DIMENSION</b>		
Wheels Size	195/55/R16	205/45/R17
Boot Space (litres)	311 1152 with Rear Seat Fold	
Turning Radius (m)	5.2	
Fuel Tank (litres)	50	
<b>PERFORMANCE (APPROXIMATE)</b>		
Maximum speed (km/h)	190	
Acceleration 0-100km/h (sec)	10.7	
Combined Drive Cycle (litres /100km)	6.7	
Coefficiency Drag	0.29 Cd	

Peugeot 208 Specifications	5 door	3 door
<b>EXTERIOR FEATURES</b>		
Front & Rear LED Signature Lighting		✓
Floating Grille Design		✓
Auto Headlights & Auto Wipers Function		✓
"Follow Me Home" Security Lighting		✓
Remote "Guide Me Home" Security Lighting		✓
Driver & Passenger Side View Mirror with Heater		✓
Electric Folding Mirrors		✓
Rear Parking Aid with Audio Visual Assistance & 4 Sensors		✓
One Touch All Around Power Windows with Anti Pinch	All	Driver Side Only
Front & Rear Fog Lamp		✓
Intermittent Rear Wiper and Washer		✓
Automatic Rear Wiper in Reverse Gear		✓
Wheels	16" Two Tone Helium Alloys	17" Two Tone Oxygen Alloys
Full Size Spare Wheels		✓
<b>INTERIOR FEATURES</b>		
Interactive HD Color Touchscreen		✓
Arkamys 3D Sound Audio System with 6 Speakers		✓
USB, Bluetooth & Audio Streaming Connectivity		✓
Digital Dual Zone Auto Air-conditioning		✓
Floating Instrument Panel with LCD Colour Display & Multi Stage Illumination		✓
Trip Computer, Trip Distance Recorder, Service Indicator, Engine Oil Level, Speedometer, Door Opening Status & Audio Source		✓
Sports Steering Wheel with Controls		✓
Advanced Electric Power Steering System		✓
Height & Reach Adjustable Steering Wheel		✓
Upholstery	Semi-bucket Moonlight Fabric Seats	Semi-bucket Sahara Leather & Fabric Seats
6 Way Driver & Front Passenger Seat Adjustment		✓
Centre Armrest with Storage Compartment		✓
Front & Rear seats with Adjustable Headrests		✓
60/40 One Touch Foldable Rear Seats		✓
Seat Back Pockets		✓
Glove Box with Cooler		✓
2 Cupholders		✓
Passenger & Driver Sunvisors with Illuminated Vanity Mirror		✓
LED Courtesy Reading Lamp		✓
12V power socket		✓
Panoramic Roof with Mood Lighting	-	✓

## RIMS

## COLOUR



16" Two Tone Helium Alloys (5 Door)



17" Two Tone Oxygen Alloys (3 Door)



Digital White



Platinum Black



Virtual Blue



Rogue Red

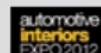


Passion Silver\*

\*Applicable only for 208 5 door model



Best Supermini 2012



Comfort Innovation of the Year 2012



European Car of the Year 2013



Spanish Car of the Year 2013

Authorised Branch/Dealer

**5 YEAR\***  
WARRANTY  
UNLIMITED MILEAGE



Interactive HD Touchscreen



Signature LED Lighting



Lightened Structure



Compact Steering Wheel

PEUGEOT ASSISTANCE 24 hours PEUGEOT PRIVILEGE PEUGEOT LOUNGE

www.peugeot.com.my | www.letyourbodydrive.com.my | [f](#) [t](#) /peugeotmalaysia

The information contained in this brochure is based on data and images available at the time of printing. Nasim Sdn Bhd reserves the right to modify technical equipment, options available, and colours at any time.

PEUGEOT CARELINE : 1-800-88-6292