

**NEW COROLLA
ALTIS**




toyota.com.my

Toyota Corolla Altis – ASEAN NCAP 'Rising Star Recognition'
Award for expanding safety features (VSC + 7 Airbags)
as standard for all variants in ASEAN countries.


Made for you.



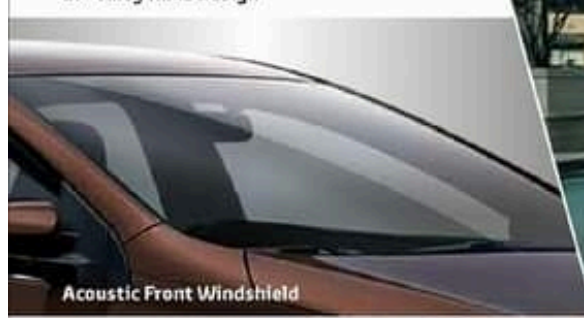
TOYOTA
ALL ABOUT THE DRIVE




Wing Mirrors with Auto Fold and Reverse Link




17" Alloy Rims Design



Acoustic Front Windshield



LED Projector Headlamps with Daytime Running Lights (DRL)



COROLLA ALTIS



STYLE THAT'S MADE FOR YOU

Advanced and sophisticated styling that attracts.



COMFORT THAT'S MADE FOR YOU

A spacious cabin, intuitive displays and premium interior.



DVD-AVX (Audio-Video Auxiliary) System and Reverse Camera with Guide Lines



Automatic Air-Conditioning



Optitron Meter Combination with Colour Multi-Information Display



Spacious Rear Seats with 60:40 Split and Recline



Sport Mode



Paddle Shift



Refined Suspension

Image(s) show



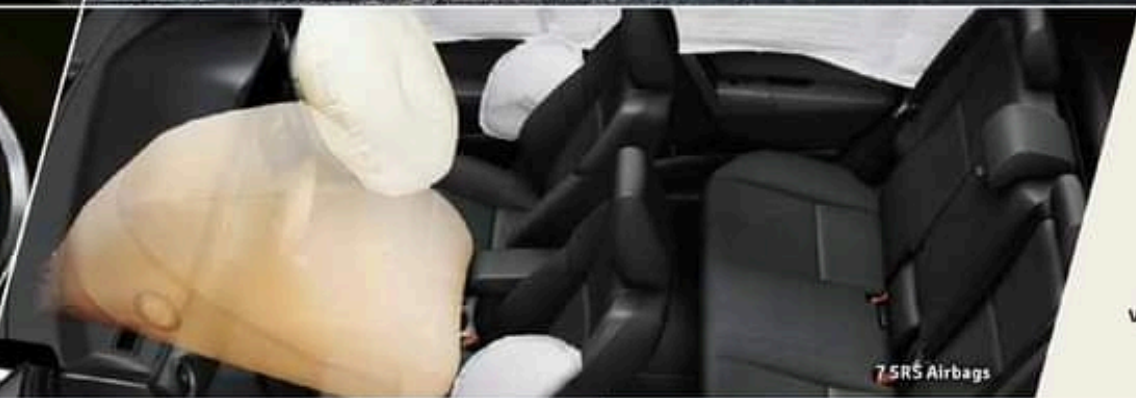
...ra with Guide Lines



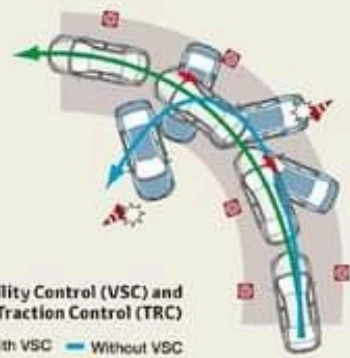
SAFETY AND PERFORMANCE THAT'S MADE FOR YOU

An ASEAN NCAP 5-star rating in the Adult Occupant Protection Category provides total peace of mind.

Image(s) shown may vary for different variants.



7 SRS Airbags



Vehicle Stability Control (VSC) and Traction Control (TRC)
— With VSC — Without VSC



Global Outstanding Assessment (GOA) Body Structure



Refined Suspension for Better Ride Comfort



Dual VVT-i Engine and 7-speed CVT



Immobiliser System, Siren with Back-up Battery and Cabin Sensor



Parking Sensor

OPTIONAL ACCESSORIES



EXTERIOR COLOURS



Phantom Brown Metallic (4W9)



Red Mica Metallic (3R3)



White Pearl CS (070)



Silver Metallic (1D4)



Grey Metallic (1F9)



Attitude Black (218)

INTERIOR



Combination Leather (Black)



2.0V interior with optional DVD-AVX system



Combination Leather (Black)



1.8G interior with optional DVD-AVX system



Fabric (Black)



1.8E interior with optional DVD-AVX system

Image(s) shown may vary for different variants.

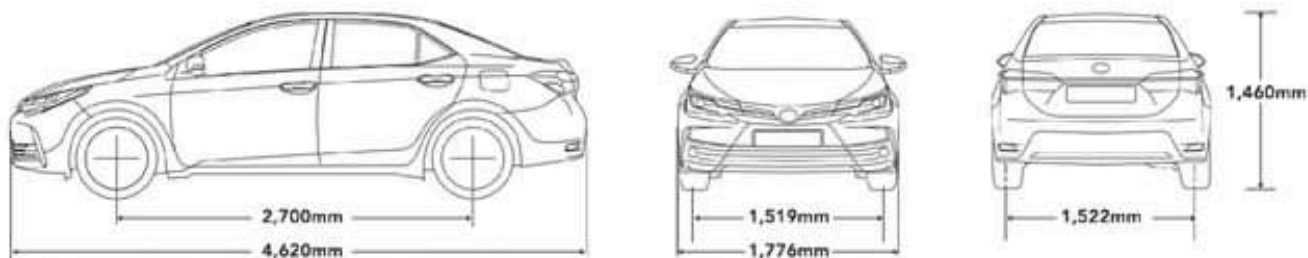
SPECIFICATIONS

VARIANT	2.0V	1.8G	1.8E
ENGINE			
Model	3ZR-FE	2ZR-FE	
Type	4-cylinder, In-line, 16-valve DOHC with Dual VVT-i		
Displacement	cc	1,987	1,798
Bore x Stroke	mm	80.5 x 97.6	80.5 x 88.3
Max. Output	kW (PS) / rpm	107 (145) / 6,200	103 (139) / 6,400
Max. Torque	Nm (kg-m) / rpm	187 (19.1) / 3,600	173 (17.6) / 4,000
TRANSMISSION			
Type	CVT with 7-speed Sport Sequential Shiftmatic Mode		
Paddle Shift	With	Without	
CHASSIS			
Suspension	Front / Rear	MacPherson Strut with Stabiliser / Torsion Beam with Stabiliser	
Brakes	Front / Rear	Ventilated Discs / Solid Discs	
Tyres & Rims		215 / 45 R17, Alloy	205 / 55 R16, Alloy
Spare Tyre & Rim		215 / 45 R17, Alloy	205 / 55 R16, Alloy
Steering	Electric Power Steering		
DIMENSIONS			
Kerb Weight	kg	1,310	1,285
Fuel Tank Capacity	litre	55	
Minimum Turning Radius	m	5.4	
EXTERIOR			
Headlamps	Type	LED Projector with Auto On / Off	Halogen with Auto On / Off
	Levelling	Auto	Manual
Daytime Running Lights		With	
Rear Combination Lamps		LED Tail and Stop Lamps	
Fog Lamps		Front and Rear	
Acoustic Windshield Glass		With	
Radiator Grille		Chrome Finish	
Wing Mirrors		Power-adjustable, Auto Fold with Reverse Link and Signal Lamps	Power-adjustable and Retractable with Signal Lamps
Chrome Finishing		Door Belt, Rear Garnish and Outer Handles	
Door Visors		With	
Remote Trunk Release		With	
Wipers		With Intermittent (Time Adjustable)	
Antenna		Glass Printed	

VARIANT	2.0V	1.8G	1.8E
INTERIOR			
Trim Finishing	Black		
Smart Entry and Start System	With		
Sport Mode	With		
Cruise Control	With	Without	
Meter Combination	Optitron, with MID		Standard, with MID
Air Conditioner	Single Zone, Automatic		
Steering Wheel	3-spoke Leather, Tilt & Telescopic Adjustable		
Switches	Audio, MID, Bluetooth®		
Gear Shift Lever	Silver and Leather		
Power Windows	Front and Rear with Driver Only Auto Up/Down and Jam Protection		
Seats	Material	Combination Leather (Black)	
	Front	Sports type, Driver 8-way Power Seat with Lumbar Support	Manual Adjust
Rear	50:40 Split and Recline		
Rear Armrest	With Cupholders		
Inside Rear View Mirror	Auto Electro Chromic Mirror	Manual Day & Night	
Lamps	With Front Personal Lamps, Glovebox Lamp, Sun Visor Lamp and Luggage Room Lamp		
Illuminated Entry System	With Push Start Lamp, Room Lamp, Footwell and Cup Holders		
SAFETY			
ACTIVE			
Anti-lock Braking System (ABS)	With Electronic Brake-force Distribution (EBD) and Brake Assist (BA)		
Vehicle Stability Control (VSC) and Traction Control (TRC)	With		
Parking Sensors	Front and Rear, Colour-keyed		
PASSIVE			
SRS Airbags	7 Airbags (Driver, Passenger, Curtain, Side and Driver Knee)		
Seat Belts	Warning	Driver and Front Passenger	
	Front	3-point ELR x 2 with Pretensioner and Force Limiter	
Rear	3-point ELR x 3		
ISOFIX	With (Rear only)		
SECURITY			
Alarm System	2 Remote Control Units, Immobiliser, Siren with Backup Battery, Cabin Sensor and Tilt Sensor		

*Functions availability may vary depending on smartphones. For details, please contact your nearest Toyota showroom.

Dimensions



- UMW Toyota Motor reserves the right to alter any details of specifications and equipment without notice.
- Details of specifications and equipment are also subject to change to suit local conditions and requirements.
- NOTE: Vehicle and specifications in this catalogue may vary from models available locally. Vehicle body and accessory colours might differ slightly from the printed photos in this catalogue.
- Optional accessories are available at extra cost.

For more information, please contact:



Toyota Corolla Altis – ASEAN NCAP ‘Rising Star Recognition’ Award for expanding safety features (VSC + 7 Airbags) as standard for all variants in ASEAN countries.



Corolla Altis has been awarded a 5-star rating in the Adult Occupant Protection category



5 years warranty from the date of first registration with unlimited mileage. Terms and Conditions apply.



For Your Auto-Financing Needs