



THE NEW
VOLVO S90
MADE BY SWEDEN

The way we've designed the T8 Twin Engine gives you more than just efficiency – you will notice how well balanced and responsive the car feels on the road, and how quickly it reacts to changes of direction. By mounting the electric motor over the rear axle and fitting the battery along the car's centreline, we've given the S90 with near-perfect weight distribution, a key element in creating agile handling.

The battery's location helps give the S90 a low centre of gravity, so it is stable, sure-footed and comfortable. And because the battery is not in the boot, you get the same luggage capacity in the T8 Twin Engine as you do in all other S90 models. Our cars are designed from the outset to use plug-in hybrid technology, so your experience with them is never compromised.



*“The T8 Twin Engine AWD gives you
the best of both worlds.
Power without compromise.”*



Two Hearts, One Car.

With advanced powertrain technologies, such as electrification, we aim to provide you with an unrivalled driving experience. In fact, we've focused on electrification and plug-in hybrid technology for more than 40 years. This experience together with advanced research put Volvo Cars in the forefront of technology, and our latest powertrain advancement – the high-performance T8 Twin Engine AWD with plug-in hybrid technology – allows you to enjoy an involving drive as well as cutting CO₂ emissions.

With 407hp the combination of a four-cylinder petrol engine and powerful electric motor offers power and performance of a much larger engine, but use much less fuel. The 320hp petrol engine drives the front wheels and the electric motor powers the rear, giving instantaneous acceleration and on-demand all-wheel drive.

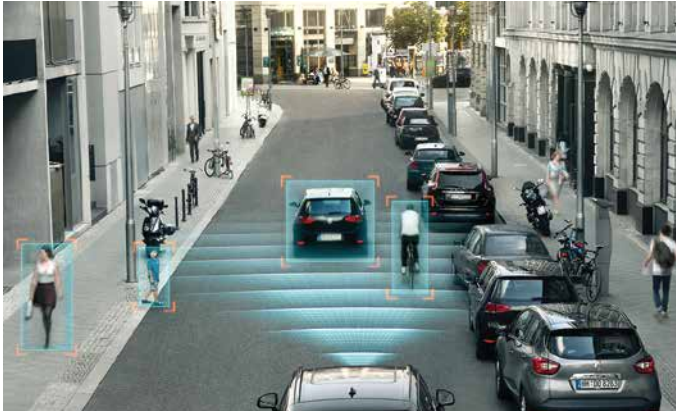
With just the electric motor powering the car, you benefit from silent, emissions-free driving and an electric-only range of 50 km, which is ideally suited for daily commuting.

Four different drive modes offer precise control over the car's powertrain. Hybrid mode uses petrol and electric power for the best balance of power and efficiency while Pure uses the electric motor only for zero-emission driving. Power combines the full output of the petrol engine and the electric motor for the best performance, while AWD switches to full-time all-wheel drive. Blend your favourite elements of each mode and create a mode that's tailored to your needs by selecting Individual.

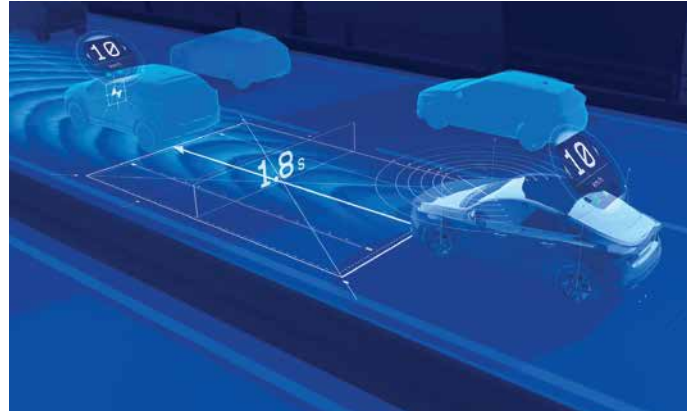
The T8 Twin Engine AWD gives you the best of both worlds. Power without compromise.



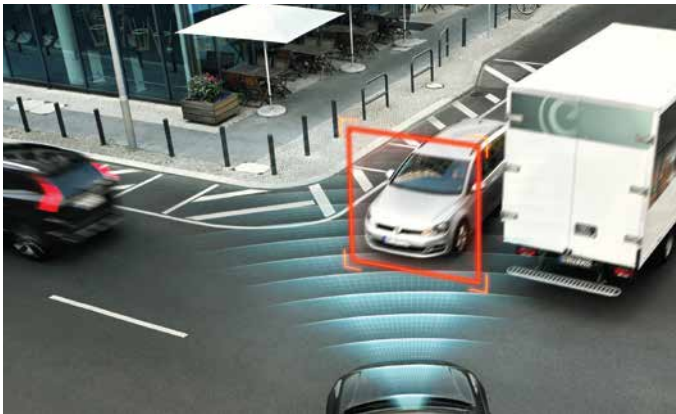
INTELLISAFE



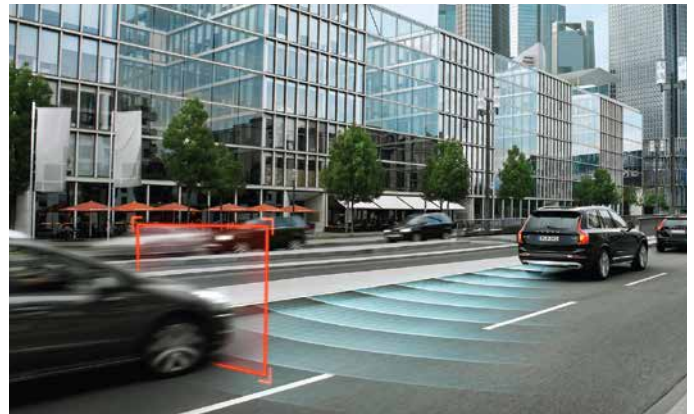
City Safety with Front Collision Warning and Full Auto Brake



Pilot Assist



City Safety with Full Auto Brake at intersections



Front and Rear Collision Mitigation Support



Pedestrian, Cyclist Detection and Large Animal Detection with Full Auto Brake



Park Assist with Park Assist Pilot (automatic parallel and perpendicular parking)



Park Assist Camera with 360° Surround View Camera



Run-off Road Mitigation

VOLVO S90 T8 TWIN ENGINE INSCRIPTION FEATURES

Driving Dynamics

- 8 Speed Automatic Transmission with Geartronic
- Plug-in Hybrid Electric Vehicle (PHEV)
- 10.4 kWh Lithium-ion Battery
- Electric Rear Axle Drive (ERAD)
- Portable Hybrid Battery Charger (Type-2 to Plug G, 4.5m) with Charge Cord Bag
- Engine Start/Stop
- Hill Start Assist (HSA)
- Drive Mode Settings with individual drive mode
- Dynamic Chassis ¹
- Active Chassis with 2-Corner Air Suspension ²
- 50 Litre Fuel Tank

Driver Displays, Controls & Information

- Digital Instrument Cluster with 12.3" TFT Adaptive Digital Display
- Graphical Head-up Display (HUD)
- Intelligent Driver Information System (IDIS)
- Outer Temperature Gauge
- Navigation Pro with Road Sign Information System (RSI)
- Steering Wheel Controls
- Voice recognition with active noise-cancelling microphones
- Trip Computer
- Digital Owner's Manual

Intellisafe

- Adaptive Cruise Control (ACC)
- City Safety - Collision Avoidance with Intersection Support
- Pedestrian, Cyclist & Large Animal Detection
- Front & Rear Collision Warning & Mitigation Support
- Run-off Road Mitigation
- Pilot Assist with Steering Support (up to 130 km/h) - Semi-autonomous Drive
- Lane Keeping Aid (LKA)
- Blind Spot Information System (BLIS)
- Cross Traffic Alert (CTA)

Preventive Safety

- Seat Belt Detection, All Seats
- Anti-lock Brake System (ABS)
- Electronic Brake Distribution (EBD)
- Emergency Brake Assist (EBA)
- Hill Descent Control (HDC)
- Hydraulic Brake Assist (HBA)
- Ready Alert Brake (RAB)
- Fading Brake Support (FBS)
- Regenerative Braking
- Electronic Stability Control (ESC)

Protective Safety

- Seat Belt Pretensioners with Load limiters, All Seats
- Pre-Prepared Restraints (PRS)
- Run-off Road Protection with Road Edge Detection
- Dual Stage Driver Airbag & Front Passenger Airbag
- Side Impact Protection System (SIPS) with Dual Chamber SIPS Airbags, Driver & Front Passenger
- Full Length Inflatable Curtains (IC)
- Whiplash Protection System (WHIPS)
- Post-collision Auto Braking & Unlocking
- Collapsible Steering Column
- Brake Pedal Release

Child Safety

- Power Child Safety Lock on rear side doors
- Passenger Airbag Cut-off Switch
- ISOFIX Attachment, Outer Rear Seats
- Power Windows with Pinch Protection
- Integrated 2-stage Booster Cushions Outer Rear Seats

Security

- Inscription Nappa Leather Key Integrated Remote (KIR)
- Remote Key Tag
- Private Locking, Glove Box & Trunk Compartment
- Volvo Guard Alarm with Immobiliser, Interior Mass Movement & Inclination Sensor
- Laminated Side Windows

Exterior

- Inscription Grille
- Inscription Bright Deco on exterior elements
- Dual Tailpipes
- Illuminated Door Handles with Puddle Lights
- Power Retractable Side Mirror
- Windscreen Wipers with Integrated Washers
- Capless Refuelling System

Wheels

- 19" 10-spoke Diamond-cut Alloy Wheel with 255/40R19 Tyres
- Indirect Tyre Pressure Monitoring System (iTPMS)
- T125/80R18 Tempa Spare Wheel
- Jack, Tools & Safety Triangle

Lights

- LED Illumination Headlights with Active Bending Lights (ABL)
- LED Active High Beam
- High-pressure Headlight Cleaners
- Integrated Daytime Running Lights (DRL)
- Rear Fog Lights
- High Position Rear Brake Light
- Emergency Brake Lights - Flashing Brake Lights & Hazard Warning

Interior

- Leather Steering Wheel with Uni Deco
- Orrefors® Crystal Gearshift Knob with Illumination
- Diamond-cut Volume Control and Drive Mode Selector
- Frameless Interior Rearview Mirror
- High Level Interior Illumination
- Linear Walnut Deco Inlays
- Carpet, Inscription
- Volvo Sill Moulding with illumination

Seats & Upholstery

- Comfort Seats with Nappa Leather Upholstery
- Power Adjustable Driver and Passenger Seats with Multi-Directional Lumbar Support, Side Support and Cushion Extensions
- Memory for driver and front passenger seats including exterior mirrors

Convenience

- Keyless Entry & Drive
- Rain Sensor with Tunnel Detection
- Adaptive Cruise Control (ACC) with Queue Assist
- Park Assist, Front & Rear
- Park Assist Pilot, Parallel & Perpendicular
- 360° Surround View Camera
- Automatically Dimmed Inner & Outer Rear View Mirror
- Illuminated Vanity Mirror, Driver & Front Passenger
- Parking Ticket Holder

Climate

- Electronic Climate Control (ECC), 2-zone
- CleanZone Interior Air Quality System
- Rear Air Conditioning, Tunnel Console & B-pillar Ventilation
- Sun Curtain, Rear Door Windows
- Power Operated Sun Curtain, Rear Window
- Humidity sensor

Entertainment

- Sensus with 9 inch touch-enabled Centre Screen Display (CSD)
- High Performance Audio System - 10 Speakers (6 Channel, 330W) ¹
- Bowers & Wilkins® Premium Sound Audio System - 19 Speakers (12 Channel, 1400W) ²
- Apple CarPlay and Android Auto
- Bluetooth® Handsfree System with Audio Streaming
- Internet connectivity via WiFi, Bluetooth or USB port
- Car WiFi hotspot via phone tethering
- Auxiliary audio input, USB & iPod® connectors

Load & Versatility

- Net Pocket on Tunnel
- Clothes Hook on B-pillar
- Power Operated Tailgate with Handsfree Operation
- Hidden Storage Under Load Floor
- 12V Power Outlet, Front & Rear
- Cupholders & Storage in Tunnel Console
- Rear Seat Storage Pockets

- Rear Armrest with Cupholders & Storage
- Power Folding Rear Head Restraints, Outer Rear Seats
- Power Folding Rear Backrest from Tailgate
- Protective Scuff Plate, Cargo Opening

Note:

- ¹ S90 T8 Twin Engine Inscription
- ² S90 T8 Twin Engine Inscription Plus





THE NEW VOLVO S90 T8 TWIN ENGINE INSCRIPTION

Engine	S90 T8 TE Inscription	S90 T8 TE Inscription Plus
No. of cylinder / Valves per cylinder	4 / 4	4 / 4
Capacity (cc)	1969	1969
Maximum power (hp)	407	407
Maximum torque (Nm)	640	640
Transmission type	8-speed automatic	8-speed automatic
Maximum speed (km/h)	250	250
Acceleration, 0-100 km/h (s)	4.8	4.8
Fuel consumption - combined cycle (litres/100km)	2.0	2.0
CO ₂ emission - combined cycle (g/km)	46	46
Others		
Tyre size	255/40R19	255/40R19
Service Intervals (km)	20,000	20,000
Fuel tank capacity (litres)	50	50
Kerb weight (kg)	2039	2069
Peninsular Malaysia Price		
	RM	RM
Selling price (incl. excise duty)	347,200.66	366,068.58
Number plate	180.00	180.00
Nett Selling Price (excl. 6% GST)	347,380.66	366,248.58
6% GST	20,842.84	21,974.92
Nett Selling Price (incl. 6% GST)	368,223.50	388,223.50
Personal Registration		
Registration fee	300.00	300.00
Road Tax 1 year	364.50	364.50
Recommended Selling Price without Insurance	368,888.00	388,888.00
Company Registration		
Registration fee	500.00	500.00
Road tax 1 year	729.00	729.00
Recommended Selling Price without Insurance	369,452.50	389,452.50
Ownership endorsement fee	50.00	50.00

5 YEARS WARRANTY*

Note: Prices quoted are exclusive of insurance. Prices quoted are subject to change without prior notice. Model specifications and colours may differ from those shown in leaflet. Images are shown with optional accessories. For further details, please refer to your nearest authorised dealer. * Terms and conditions apply.
Effective Date: October 2017.

www.volvocars.com/my

VOLVO CAR MALAYSIA (482430-K) • **Authorised Dealers:**

• **KUALA LUMPUR** • CLEAR MARQUE (Jalan Kuching 03-6250 0422) • FEDERAL AUTO CARS (Federal Highway 03-2260 1411) • SISMA AUTO (Jalan Bukit Bintang 03-2166 5155)
 • **SELANGOR** • FEDERAL AUTO CARS (Glenmarie 03-5569 4880) • **PENANG** • FEDERAL AUTO CARS (Jalan Sungai Pinang 04-281 7300) • iROLL AUTO (Juru 04-508 0888)
 • **JOHOR** • FEDERAL AUTO CARS (Johor Bahru 07-237 7300) • **SABAH** • ANGKATAN HEBAT (Kota Kinabalu 088-485 544)