

MAZDA CX-7



mazda



zoom-zoom



Drive it like a sports car. Pack it like an SUV. Two or all-wheel drive and a choice of efficient petrol engines delivering Mazda's signature sports-inspired performance. And that's what Zoom-Zoom is all about. ◀





WE SEE THE SUV DIFFERENTLY.

Its sport car-inspired looks prove an SUV needn't be shaped by practicality. From every angle Mazda CX-7 takes a fresh approach to design. Its steeply raked windscreen, arresting side-window profile and muscular shoulders create a powerful impression. Striking 17 and 19 inch alloy wheels fill the bold wheel arches and the distinctive 5-point grille accentuates

the CX-7's athletic stance. Limited models add a touch of class with integrated front fog lamps and chrome finishing on the lower grille, door handles and window sills. With its superb finishing and uncompromised build quality throughout, the Mazda CX-7 gives you the practicality you need, but wraps it in a style that's impossible to ignore.



A lot to admire.

Rear roof spoiler adds a sporting edge. Tail-lamp clusters set off streamlined rear design. Chrome-tipped exhausts are the polished sign of CX-7's performance.



Crafted for comfort.

CX-7 oozes refinement and exceptional craftsmanship with carefully selected materials. Limited models indulge you with leather trim and piano black detailing.

BOSE

In tune with you.

An auxiliary input connects portable MP3 players to the six-disc in-dash audio system.

SETTLE IN AND ENJOY THE SHOW.

The sleek exterior of the Mazda CX-7 is an invitation to enter a world that embodies the best of form and function. Premium materials and superb finishing create a special atmosphere, enhanced by crystal clear sports instrumentation. The leather-wrapped steering wheel houses switches for the cruise control and audio systems as well as controls for the top-mounted Multi Information Display which shows everything from audio settings and trip computer data, to a maintenance monitor and reversing camera display. Plus, with Bluetooth® handsfree phone connectivity standard across the range there's no need to take your hands off the wheel either. Now that's smart.

The perfect driving soundtrack comes via an MP3-compatible 6-disc in-dash CD player with Limited models offering the superb performance of a 240 watt Bose® audio system with digital amplifier and nine speakers. And why not enjoy this from the comfort of Mazda CX-7's highly-supportive seats? Choose the CX-7 Limited and you'll also be indulged by leather trim, front seat heating and an 8-way power-adjustable driver's seat with 3-position memory.

Dial up the comfort.

Enjoy the perfect temperature, thanks to climate control air-conditioning.

IT'S ALL SO EASY.

Remote central locking lets you unlock the driver's door, or all doors, with the touch of a button. Behind the wheel you've got a commanding view of the road and the CX-7's clever design accommodates everything you need. Handy storage spaces abound, from the centre armrest console that opens to reveal generous

storage space, to custom-designed compartments for mobile phones and coins. The rear hatch gives you easy access to an area large enough to hold three golf bags sideways, while 60:40 split rear seats fold virtually flat to allow room for longer items. With the seats upright there's plenty of room for five adults to enjoy the ride. Whatever you're doing, Mazda CX-7 makes it seem easy.



▲ **Goes flat out to help you.**
Fold either or both 60:40 split rear seats to create all the room you need.



◀ **Bags of room.**
Tailgate lifts high to give you unobstructed access to large load area.

CX-7 GSX



CX-7 Limited



Overseas model shown.

MAZDA CX-7. TWO-WHEEL OR ALL-WHEEL DRIVE. ALL-WOW EXCITEMENT.

All-Wow excitement begins with the Mazda CX-7 GSX. Striking style inside and out combines with a sporty drive that will have you smiling. Its economical 2.5 litre four-cylinder petrol engine has 120kW of power and 205Nm of torque on tap. Its performance is matched to a responsive 5-speed Activematic transmission, which offers smooth automatic gear selection, or full manual control. Add front-wheel drive linked to precisely-controlled suspension and you have an agile SUV that feels more like a sports car.

The non-stop thrills of the CX-7 Limited starts with the four-cylinder Direct Injection Spark Ignition (DISI) engine. The advanced combination of intercooling, direct injection and a lightweight turbocharger pumps out 175kW of power and 350Nm of torque from just 2.3 litres, yet keeps fuel consumption and emissions impressively low. Power is delivered with stunning effect by a sports-tuned suspension and Active Torque Split all-wheel drive. This advanced system monitors wheel speed and engine output; splitting torque delivery between 100:0 and 50:50 front to rear for optimum grip in all conditions. The quick-shifting 6-speed Activematic transmission offers automatic ease, but also lets you take manual control of the action.

Nice set of wheels. ▶

17 inch alloy wheels with 215/70 tyres on GSX models and 19 inch alloy wheels with 235/55 tyres on the Limited model deliver assured safety and handling.



◀ Puts you in drive.

5 or 6 speed Activematic transmissions let you snick through the gears manually, or have the smooth shifting done for you automatically.

Charged atmosphere. ▶

Blackout lighting on the CX-7 Limited instrument cluster heightens the excitement.



YOU'VE GOT THE BEST IN SAFETY ON BOARD.

Highly visible.
Side mirror-mounted indicators make it easier for other road users to see you.

You'll feel exceptionally well looked after in a Mazda CX-7. Its extremely stiff body shell integrates the Mazda Advanced Impact Distribution and Absorption System (MAIDAS), which employs 'Triple H' construction to absorb and redirect impact energy away from the occupant cell. This impressive protection is boosted by front and side airbags for the driver and front passenger, plus curtain airbags front and rear. Front seats are equipped with seat belt reminders, pretensioners and load-limiters. Both models feature Dynamic Stability Control (DSC) incorporating Traction Control as standard. This advanced stability system precisely manages engine

Reinforced confidence.
Rigid body shell integrates MAIDAS and six SRS airbags for high levels of occupant protection.

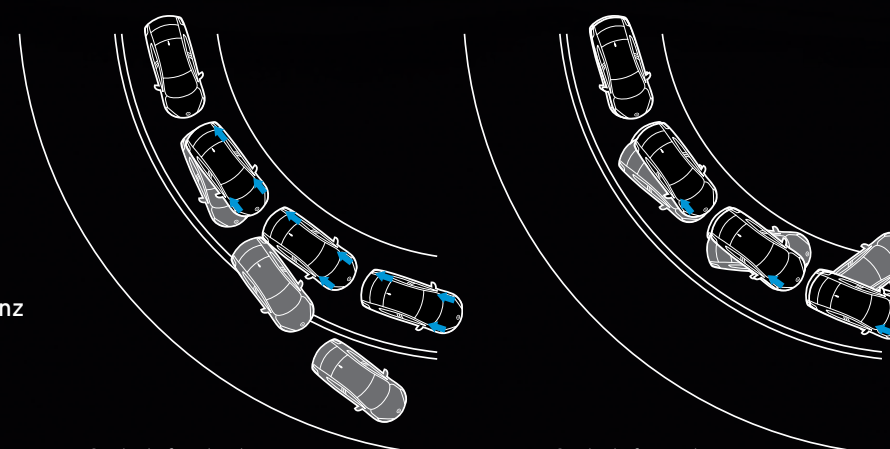


output and braking to help prevent skidding or loss of control in all conditions. Large disc brakes all round are augmented by Anti-lock Braking (ABS) with Electronic Brake-force Distribution and Emergency Brake Assist, giving you enhanced control under sudden braking. Even reversing is made safer, thanks to the inclusion of a rear-view camera as standard. Making your sense of security even greater is remote central locking and an engine immobiliser.

Mazda CX-7's impressive technology and resale value deserve the very best protection. And that's why every CX-7 comes with mazdacare as standard. You and your car are taken care of with a Mazda Genuine Factory Warranty and Mazda On Call Roadside Assistance for a 3 year, unlimited kilometre period. And best of all, mazdacare gives you Genuine Scheduled Servicing for 3 years, or 100,000km (whichever occurs first), at no extra cost. This gives you access to a comprehensive service program where factory-trained technicians equipped with one of the world's most advanced computer diagnostic systems ensure your CX-7 continues to perform in A1 condition. Plus you'll be protecting your investment in a vehicle that already has outstanding resale value. For more information on mazdacare, see the owner documents or go to mazda.co.nz



Know what's behind you.
Simply select reverse and Mazda CX-7's rear view camera and colour display automatically show you what's out back.



Control of understeer.

Control of oversteer.



With DSC system.



Without DSC system.

Helps you stay on track.
DSC enhances control in wet or slippery conditions. By managing the braking force and engine power delivered to individual wheels, it helps you maintain grip.



MAZDA CX-7 AT A GLANCE.



SUV versatility meets superb refinement and sports-inspired driving dynamics. No matter what you're doing, you'll enjoy Zoom-Zoom driving pleasure with the CX-7 GSX.

- 2.5 litre in-line 4-cylinder 16-valve DOHC S-VT
- 120kW@6,000rpm and 205Nm@2,000rpm
- 62 litre fuel tank capacity
- 5-speed Activematic (auto) transmission
- 17 inch alloy wheels
- Exhaust extension (chrome)
- Power mirrors (body-coloured)
- Power windows
- Rear spoiler
- Climate control air conditioning
- Cruise control
- Auto on/off headlamps
- Multi information display with; ambient temperature gauge, maintenance monitor and trip computer
- Seat trim: Cloth
- Seats (front) with: height adjustment (driver) and seat back pocket (passenger)
- Seats (rear) with: 60/40 split fold backrest
- Tilt and telescopic adjustable steering wheel
- 2-speed front wipers with variable intermittent function
- Bluetooth® handsfree connectivity with steering wheel-mounted controls
- Bluetooth® audio compatibility
- AM/FM tuner with 6-disc, in-dash CD player (MP3/WMA compatible) and 4 speakers
- Auxiliary input (3.5mm MP3 player compatible)
- Steering wheel-mounted audio controls
- Front (driver and passenger), side (front) and curtain (front and rear) SRS airbags
- Anti-lock Braking System (ABS)
- Dynamic Stability Control (DSC)
- Electronic Brakeforce Distribution (EBD)
- Emergency Brake Assist (EBA)
- Reversing Camera
- Traction Control System (TCS)

CX-7 Limited features additional to the CX-7 GSX include:

- 2.3 litre Direct Injection Spark Ignition (DISI) turbocharged in-line 4-cylinder 16 valve DOHC
- 175kW@5,000rpm and 350Nm@2,500rpm
- 69 litre fuel tank capacity
- 6-speed Activematic (auto) transmission
- Active Torque Split All-Wheel Drive (AWD) system
- Front fog lamps
- 19 inch alloy wheels
- Chrome door handles
- Power mirrors (body coloured with heating function)
- Blackout instrument cluster
- Interior panel trim (piano black)
- Seat trim: Leather
- Seats (front) with: 8-way power adjustment (driver), heating function (driver and passenger), lumbar adjustment (driver) and 3-position memory (driver)
- Premium Bose® 240 watt amplifier and 9 speakers

SPECIFICATIONS.

| | CX-7 GSX | CX-7 Limited |
|---------------------------------|-------------------------------------------------|--------------------------------------------------------------------------------------------------|
| Powertrain | | |
| Engine type | 2.5 litre in-line 4-cylinder 16-valve DOHC S-VT | 2.3 litre Direct Injection, Spark Ignition (DISI) turbocharged in-line, 4-cylinder 16 valve DOHC |
| Engine capacity | 2,488 cc | 2,261 cc |
| Bore and stroke | 89.0 x 100.0mm | 87.5 x 94.0 mm |
| Compression ratio | 9.7 : 1 | 9.5 : 1 |
| Maximum power | 120 kW @ 6,000 rpm | 175 kW @ 5,000 rpm |
| Maximum torque | 205 Nm @ 2,000 rpm | 350 Nm @ 2,500 rpm |
| Throttle control | Electronic (drive-by-wire) | Electronic (drive-by-wire) |
| Fuel system | Electronic direct injection | Electronic direct injection |
| Fuel tank capacity | 62 litres | 69 litres |
| Recommended fuel | Regular unleaded (91 RON) | Premium unleaded (95 RON) |
| Fuel consumption*1 | 9.4 litres per 100km | 11.5 litres per 100 km |
| Emissions standard | Euro stage IV | Euro stage IV |
| Activematic (auto) transmission | 5-speed | 6-speed |
| Gear ratio | | |
| 1st | 3.620 | 4.148 |
| 2nd | 1.925 | 2.370 |
| 3rd | 1.285 | 1.555 |
| 4th | 0.933 | 1.154 |
| 5th | 0.692 | 0.859 |
| 6th | - | 0.685 |
| reverse | 3.405 | 3.393 |
| final drive | 3.458 | 3.749 |
| Chassis | | |
| All-Wheel Drive (AWD) system | - | Active Torque Split (ATS)*2 |
| Brake type | | |
| front | Ventilated disc | Ventilated disc |
| rear | Ventilated disc | Ventilated disc |
| Brake diameter | | |
| front | 296 mm | 296 mm |
| rear | 302 mm | 302 mm |
| Steering type | Hydraulic power assist steering | Hydraulic power assist steering |
| Suspension | | |
| front | MacPherson strut | MacPherson strut |
| rear | Multi-link | Multi-link |
| Turning circle | | |
| kerb to kerb | 11.4 m | 11.4 m |
| Tyre size | 215/70R17 101H | 235/55R19 101H |
| Wheel size | 17 x 7.0 J | 19 x 7.5 J |
| Wheel type | Alloy | Alloy |
| Wheel type (spare) | Temporary (185/80R17) | Temporary (185/80R17) |

| | CX-7 GSX | CX-7 Limited |
|------------------------------------------------|---------------|---------------------------|
| Exterior | | |
| Door handles | body-coloured | chrome |
| Exhaust extensions (chrome) | ✓ | ✓ |
| Fog-lamps (front) | - | ✓ |
| Front and rear bumpers (body coloured) | ✓ | ✓ |
| Green-tinted windscreen, side and rear windows | ✓ | ✓ |
| Headlamps (halogen) | ✓ | ✓ |
| Metallic/Mica paint | ✓ | ✓ |
| Mudflaps (rear) | ✓ | ✓ |
| Power mirrors (body coloured) | ✓ | ✓ (with heating function) |
| Power windows | ✓ | ✓ |
| Rear centre roof mounted aerial | ✓ | ✓ |
| Rear spoiler | ✓ | ✓ |
| Roof rack mounting points | ✓ | ✓ |
| Interior | | |
| Air-conditioning (climate control) | ✓ | ✓ |
| Blackout instrument cluster | - | ✓ |
| Bluetooth® handsfree connectivity | ✓ | ✓ |
| Cargo area tie-down hooks | ✓ | ✓ |
| Centre armrest console | ✓ | ✓ |
| Critical function warning lights/chimes | ✓ | ✓ |
| Cruise control | ✓ | ✓ |
| Cupholders | ✓ | ✓ |
| Digital clock | ✓ | ✓ |
| Door map pockets (front) | ✓ | ✓ |
| Driver's left footrest | ✓ | ✓ |
| Auto on/off headlamps | ✓ | ✓ |
| Heating ducts for rear passengers | ✓ | ✓ |
| Illuminated entry system with delayed fade | ✓ | ✓ |
| Instrument panel light dimmer | ✓ | ✓ |
| Interior illumination: | | |
| cargo room lamp | ✓ | ✓ |
| ignition key surround | ✓ | ✓ |
| map reading spot lamps | ✓ | ✓ |
| power window switch (driver) | ✓ | ✓ |
| Interior release for fuel filler door | ✓ | ✓ |

For further information visit mazda.co.nz or Free Phone 0800 800 626.

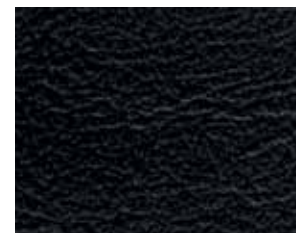
| | CX-7 GSX | CX-7 Limited |
|------------------------------------------------------------|----------|--------------|
| Leather-wrapped: | | |
| gear shift knob | ✓ | ✓ |
| steering wheel | ✓ | ✓ |
| Low fuel warning light | ✓ | ✓ |
| Multi information display with: | | |
| ambient temperature gauge | ✓ | ✓ |
| maintenance monitor | ✓ | ✓ |
| trip computer*3 | ✓ | ✓ |
| Panel trim (piano black) | - | ✓ |
| Passenger assist grips (front and rear) | ✓ | ✓ |
| Retractable cargo area cover | ✓ | ✓ |
| Seat trim: | cloth | leather*4 |
| Seats (front) with: | | |
| 3-position memory function (driver) | - | ✓ |
| 8-way power adjustment (driver) | - | ✓ |
| adjustable head restraints | ✓ | ✓ |
| heating function (driver and passenger) | - | ✓ |
| height adjustment (driver) | ✓ | ✓ |
| lumbar adjustment (driver) | ✓ | ✓ |
| rake and slide adjustment | ✓ | ✓ |
| seat back pocket (passenger) | ✓ | ✓ |
| Seats (rear) with: | | |
| 60/40 split fold backrest | ✓ | ✓ |
| adjustable head restraints | ✓ | ✓ |
| centre fold down armrest | ✓ | ✓ |
| Tachometer and electronic odometer/tripmeter | ✓ | ✓ |
| Tilt and telescopic adjustable steering wheel | ✓ | ✓ |
| Vanity mirrors (front) with illumination | ✓ | ✓ |
| Ventilation pollen filter | ✓ | ✓ |
| Window demister (rear) | ✓ | ✓ |
| Wipers (front) 2-speed with variable intermittent function | ✓ | ✓ |
| Wiper (rear) with intermittent function | ✓ | ✓ |
| Audio | | |
| AM/FM tuner | ✓ | ✓ |
| Auxiliary input (3.5 mm MP3 player compatible) | ✓ | ✓ |
| Bluetooth® audio compatibility | ✓ | ✓ |
| CD player, in-dash 6-disc (MP3/WMA compatible) | ✓ | ✓ |
| Premium Bose® 240 watt amplifier and speakers | - | ✓ |
| Speakers, number of | 4 | 9 |
| Steering wheel-mounted audio controls | ✓ | ✓ |

| | CX-7 GSX | CX-7 Limited |
|------------------------------------------------------------------------------------------------|------------|--------------|
| Safety | | |
| Airbags SRS: | | |
| front (driver and passenger) | ✓ | ✓ |
| side (front) | ✓ | ✓ |
| curtain (front and rear) | ✓ | ✓ |
| Anti-lock Braking System (ABS) | ✓ | ✓ |
| Child restraint anchor points | ✓ | ✓ |
| Childproof rear door locks | ✓ | ✓ |
| 'Dual stage' door unlocking function | ✓ | ✓ |
| Dynamic Stability Control (DSC) | ✓ | ✓ |
| Electronic Brake-force Distribution (EBD) | ✓ | ✓ |
| Emergency Brake Assist (EBA) | ✓ | ✓ |
| Engine immobiliser | ✓ | ✓ |
| High mount stop lamp | ✓ | ✓ |
| Intrusion-minimising brake pedal | ✓ | ✓ |
| Left-hand-side convex (wide angle) exterior mirror | ✓ | ✓ |
| One touch (up and down) power window (driver) | ✓ | ✓ |
| Remote central locking (2 transmitters) | ✓ | ✓ |
| Reversing camera | ✓ | ✓ |
| Seat-belt warning, audible and visual (front) | ✓ | ✓ |
| Seat-belts (front) with pretensioners, load-limiters and height adjustable shoulder anchorages | ✓ | ✓ |
| Seat-belts 3-point lap-sash (all seats) | ✓ | ✓ |
| Side impact door beams | ✓ | ✓ |
| Traction Control System (TCS) | ✓ | ✓ |
| 'Triple H' safety construction with front and rear crumple zones | ✓ | ✓ |
| Dimensions | | |
| Ground clearance laden | 147 mm | 170 mm |
| Overall height | 1,645 mm | 1,645 mm |
| Overall length | 4,693 mm | 4,693 mm |
| Overall width | 1,872 mm | 1,872 mm |
| Track | | |
| front | 1,627 mm | 1,617 mm |
| rear | 1,622 mm | 1,612 mm |
| Wheelbase | 2,750 mm | 2,750 mm |
| Cargo room volume (VDA) | 400 litres | 400 litres |
| Kerb weight | 1,589 kg | 1,772 kg |
| Towing capacity | | |
| braked | 1,000 kg | 1,600 kg |
| unbraked | 750 kg | 750kg |

For further information visit mazda.co.nz or Free Phone 0800 800 626.

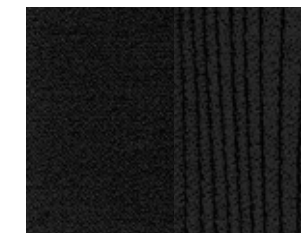
Interior

CX-7 Limited



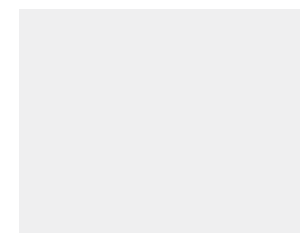
Black Leather*4

CX-7 GSX



Black Cloth

Exterior



Crystal White Pearl
Mica



Aluminium
Metallic



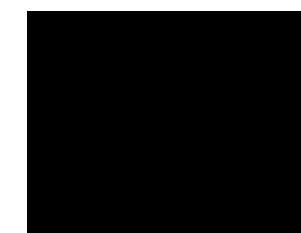
Galaxy Grey
Mica



Stormy Blue
Mica



Copper Red
Mica



Sparkling Black
Mica

*1 Fuel consumption figures are based on ADR81/02 test results on the combined cycle. They are useful in comparing the fuel consumption of different vehicles. They may not be the fuel consumption achieved in practice. This will depend on traffic and road conditions and how the vehicle is driven. *2 Active Torque Split (ATS) AWD system automatically adjusts front/rear wheel torque distribution between 100:0 and 50:50. *3 Trip computer comprises: current and average fuel economy, fuel range and average speed. *4 Leather interior includes some Maztex material on selected high impact surfaces. All care is taken to ensure the accuracy of this brochure at the time of publication. Specifications, features and model availability may vary from Dealer to Dealer and may change without notice. Please refer to mazda.co.nz or consult your Mazda Dealer prior to placing an order to ascertain current information on model availability, specifications, options, features and prices. Mazda Motors of New Zealand Limited will not be liable for any loss arising from the information in this brochure, whether in negligence or otherwise. Mazda Motors of New Zealand Limited, PO Box 132 057, Sylvia Park, Auckland 1644. CX-7 is covered by a mazda care 3 year unlimited kilometre warranty, Mazda On Call roadside assistance and 3 year/100,000 kilometre (whichever occurs first) Genuine Scheduled Servicing Plan. Due to the nature of the printing process, colours may vary from those shown in this brochure. Ask your Dealer to show you a product sample. Trademarks and trade names are those of their respective owners. Published November 2010.

All care is taken to ensure the accuracy of this brochure at the time of publication. Any accessories shown throughout the brochure are for illustration purposes only and do not come standard with the vehicle's purchase. Specifications, features and model availability may change without notice. Please refer to mazda.co.nz or consult your Mazda Dealer prior to placing an order to ascertain current information on model availability, specifications, options, features and prices. Mazda Motors of New Zealand Limited will not be liable for any loss arising from the information in this brochure whether in negligence or otherwise. Mazda Motors of New Zealand Limited, PO Box 132 057, Sylvia Park, Auckland 1644. Due to the nature of the printing process colours may vary from those shown in this brochure. Ask your dealer to show you a product sample. Published November 2010. MZ4900509

