

Stinger



Movement that inspires



Husband, son, father...
 Each role that I play
 is a milestone of my life,
 and every new role that I take
 fills me with excitement.

My unique story
 will continue to evolve
 with every role that I play.

Stinger Life

Meandering through a street by chance,
 a camera in a shop window catches my eye.
 Alas, I was a free spirit that loved photography...
 A passion that I had long forgotten
 being immersed in my work
 is suddenly reawakened.

Many things have changed
 but some things remain intact.
 I come to a pause, overcome by the passion.

stinger



Early morning, I am naturally awakened.
 I have only slept for a few hours, but I feel light.
 I scurry to get ready.
 Stinger is waiting.
 Its overwhelming power is calling for me.





It's been a while since I've been to my studio.
 Today, the ignition sounds like a melody.
 Familiar roads suddenly feel unfamiliar
 and the thought of developing prints lifts me up.

From a wide choice of cameras,
one catches my eye.
My tastes and preferences
have always been clear cut.





I didn't set a destination.
I will follow my instincts and venture out.
My daughter gazes at me with curiosity from the back seat.
I dream about the day that we will be sharing
our hobbies together.

I am twice as happy because I have a family
with whom I can enjoy what I like.



My daughter's frame captures
the scenery and the feelings of the moment.
I, too, take a shot.
My family and I will remember this day for a long time.
Free like the wind, I feel immense satisfaction
with the way that I am today.

Just the way you are,
Stinger



Stinger Features

Performance

Powerful and bold 300+ horsepower driving performance of a Smartstream G2.5 T-GDI and 3.3 T-GDI gasoline engine.



Smartstream G2.5 T-GDI engine

304/43.0 (ps/kgf·m)



3.3 T-GDI gasoline engine

373/52.0 (ps/kgf·m)



Electronic variable exhaust valve (3.3 T-GDI only)

Produces a prominent, sporty exhaust sound or a quieter, subdued sound according to the driving mode and manner of acceleration.

2nd generation dynamic AWD system (3.3 T-GDI only)

Integrates the control of the electronic all-wheel drive (AWD) and the mechanical limited-slip differential (M-LSD) to improve driving stability and enable sporty driving.



Smartstream G2.5 T-GDI engine*

Improved horsepower and fuel economy orchestrate Stinger's unique dynamic and efficient driving. (304 hp based on 2WD, 18" tires: Combined fuel economy 11.2 km/l)



Exterior Design

Futuristic looks have been fused into Stinger's unique design identity. A more polished look that includes rear lamps that extend horizontally and a more dynamic muffler and wheels convey the air of a high-performance sedan.

- LED rear combination lamp & LED sequential-lighting turn signal lamp
- Rear diffuser and dual twin muffler
- 19" full finish wheel





Interior Design

Originality, classic sensibility, and sportiness create a perfect harmony. Quilted Nappa leather seats and crash pads with delicate stitching embellish the cabin, while a 10.25" navigation for advanced infotainment adds greater comfort to a premium space.

Quilted Nappa leather seat

10.25" navigation

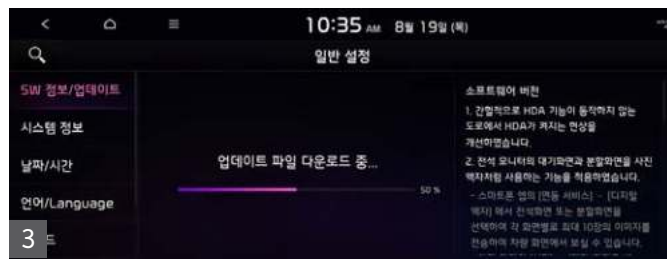
Ambient light



Convenience



1 Kia Pay
Kia Pay is a hassle-free payment system that can be used to make payments, such as gas and parking fees, to affiliated merchants with a card registered in the Kia Pay app and a few taps of the navigation screen.
* The list of merchants is continuously expanding. For an updated list, please consult the navigation system or the Kia Pay app.



2 Remote 360-degree view (surround view)
Check the location and surroundings of your vehicle remotely, even from far away, using the Kia Connect app on your smartphone.

3 Over-the-Air (OTA) update



4 Blind-spot View Monitor (BVM)
Cameras on the bottom of outside mirrors display a posterolateral view of the vehicle on the cluster's screen when the turn signal is activated, providing greater visibility of the surroundings in comparison to conventional outside mirrors for a safer driving environment.



5 Air purification system (including micro-dust sensor)
Monitors and displays indoor air quality in real time in 4 levels (good, normal, bad, very bad) on the air conditioning display window. Automatically activates the high-performance combi-filter to purify the air if air quality is bad or very bad.



6 Outside air intake control
Linked with the navigation system, windows are automatically closed and air circulation is automatically switched to the recirculation mode before entering a tunnel or passing through an area where the air is thought to be polluted in order to maintain a pleasant cabin air quality.
* Tunnel-linked controls activate when driving on an expressway or highway. They do not operate in tunnels less than 50 m long.

Advanced Driver Assistance Systems



1 Forward Collision–avoidance Assist (oncoming traffic in intersections)
Alerts the driver when danger of colliding with a car, pedestrian, or cyclist in front is detected. Automatically helps to apply the brakes if the risk of a collision increases even after sounding an alarm or when a risk of colliding with an oncoming vehicle on an opposite lane is detected while making a left turn in an intersection.



2 Safe Exit Warning
Alerts disembarking passengers if a vehicle is approaching from the rear in an adjacent lane.



3 Navigation–based Smart Cruise Control* (Safety zones and curved sections of expressways and highways)
Reduces speed before entering safety zones and curved segments while driving on expressways and highways. Resumes acceleration to preset levels thereafter.



4 Lane Following Assist
Tracks lanes using the front–view camera and helps maintain the vehicle in the center of the lane.



5 Highway Driving Assist (HDA)
Helps to maintain a safe distance from the car in front while driving on an expressway or highway and to keep the center of the lane even while driving at a preset speed through a curved section of the road.



6 Rear Cross–traffic Collision–avoidance Assist (RCCA)
Alerts the driver if a car is approaching from the left or right while pulling out in reverse. Applies the brakes automatically if the risk of collision increases even after sounding an alarm.

Stinger Tribute Edition

Based on a 3.3 gasoline turbo engine, the pinnacle of performance, Stinger Tribute Edition offers even greater value with new exterior and interior colors and specifications only limited to this special edition model.





Black outside mirror cover



19" glossy black design wheels and black Brembo brake calipers





The Tribute Edition maximizes differentiated value with the application of terracotta brown color throughout the interior (Nappa leather upholstery, seat belts, and stitching) and the new exclusive design is applied on the door scuffs and headrests.



Terracotta Brown Nappa leather seats (headrests with the Tribute Edition's exclusive logo)



Door scuff (Tribute Edition exclusive)



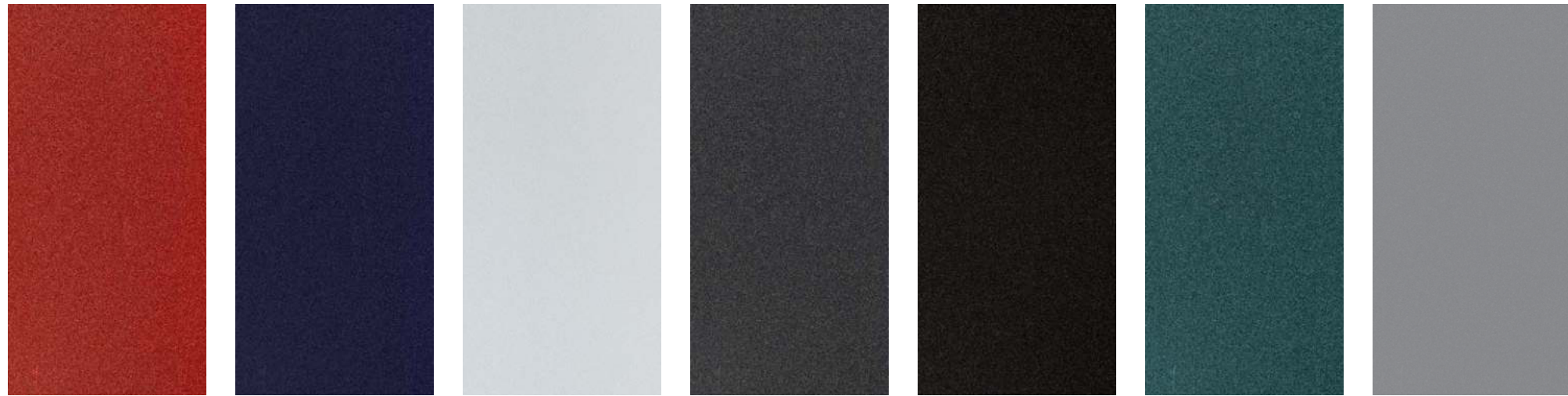
Console upper cover (Carbon insert film)



Door garnish (Carbon insert film)

* Each vehicle's distinct serial number appears on the driver's seat door scuff. For additional replacement, the serial number can't be applied.

Exterior Colors



High Chroma Red (H4R) Deep Chroma Blue (D9B) Snow White Pearl (SWP) Pantera Metal (P2M) Aurora Black Pearl (ABP) Ascot Green (ACG) Moonscape Matte Gray (KLM) (Tribute Edition only)

* The Tribute Edition is only available in 2 colors: Ascot Green (ACG) and Moonscape Matte Gray (KLM).

Line-up



2.5 gasoline turbo



3,3 gasoline turbo
(Applicable to the Tribute Edition)

Interior Colors



Quilted Nappa leather
Black interior (Quilted Nappa leather/Leather)



Brown interior (Quilted Nappa leather)



Dark red interior (Quilted Nappa leather)



Terracotta Brown interior (Nappa leather/for Tribute Edition only)

* The Tribute Edition is only available in this interior color.

Details



18" full finish wheel

19" full finish wheel

19" design wheel
(Tribute Edition only)

* Brembo brakes depicted with the 19" full finish wheel and 19" design wheel are only available with the Performance Package.



LED headlamp & DRL



LED rear combination lamp & bulb turn signal lamp



Metal transverse trim



Metal door scuff



6:4 split-folding rear seat



Frameless rear-view mirror



Electric Parking Brake



Engine start/stop button smart key system



Supervision cluster (4.2" color TFT LCD)



Wireless smartphone charging system



Paddle shift



Metal pedal

Specifications may vary according to the trim, engine and options that are selected. / * A virtual image has been used to help viewers' understanding.

KIA Genuine Accessories



Rear spoiler

* Not applicable to the Tribute Edition.

Alcantara package

* Available only on GT.
Not applicable to the Tribute Edition



Transmission knob



Steering wheel



Console armrest

Accessories package



Roof skin



Door spot lamp



Vehicle protection film*
Applied to the front and rear bumpers' sides, door edges, door caps, door steps, and fuel door.

Dimensions & Membership

Units: mm
Wheel tread: Based on 19" tires.



Stinger Membership Program

Pre-care · Engine oil set / air conditioner filter / wiper blades replacement, door-to-door service, navigation update (Service type/frequency varies by vehicle model; membership enrollment required)	Premium Care * Door-to-door service: Service center and AUTO Q pickup & delivery service. * Premium care benefits may change without notice due to the manufacturer's circumstances.	Premium cleaning · Comprehensive interior cleaning of a new car. · Meticulous cleaning of the interior/exterior at a requested time/place. · Solid wax polishing (optional service)	Premium valet parking · Pickup/drop-off service from the members-only THE MEMBERSHIP parking lot near Gimpo Airport to/from the terminal. (Valet parking allowance: 3 days and 2 nights)	Premium Dining · 50% discount on THE MEMBERSHIP course menu at famous domestic restaurants.	Premium invitation · Special invitation to exclusive Stinger customer events.
THE MEMBERSHIP Concierge (080-500-2000)	Digital mobile lounge (MyKia App.)	Professional maintenance network	Warranty service		
· Differentiated membership service (general inquiries and service/maintenance reservations) by professional counselors at THE MEMBERSHIP's dedicated customer service center.	· Exclusive app page for Stinger customers. ① Vehicle maintenance - Verification of remaining free care benefits. ② Membership Premium Care reservations	· High quality customer service by highly skilled professional engineers and advisors. - Searchable network in the members' website (members.kia.com) and the MyKia App.	· 3.3 gasoline turbo - Engine, power transmission, body and general parts: 5 years or 100,000 km · 2.5 gasoline turbo - Engine, power transmission: 5 years or 100,000 km ; Body and general parts: 3 years or 60,000 km		

Specifications may vary according to the trim, engine and options that are selected.

Technical Data & Service

MyKia My new mobility life

An essential app for Kia customers
Access Kia and Kia Members' websites with a single ID and view vehicle purchase, maintenance, and membership information all at once.

Kia Connect Kia Connect is Kia's connected car service for wireless navigation updates, smartphone-based remote vehicle control, and emergency alerts for a safer and more convenient vehicle usage experience.

- Remote control**: Cool or heat the interior of the car remotely in advance using a smart phone.
- Safety and security**: Emergency assistance through the Kia Connect center in the event of an airbag deployment or roadside emergency (24/7, 365 days).
- Maintenance**: Vehicle maintenance services such as breakdown diagnosis, driving information, and wireless updates.
- Navigation**: Optimal route guidance using real-time traffic information.

* Kia Connect is the new name for UVO, Kia's connected car service.
 * Complimentary 5-year basic service and additional 5-year light service (SOS emergency dispatch, automatic notification of airbag deployment, monthly reports, traffic information).
 * For more information, visit Kia Connect's customer service center in Kakao Talk (search for "기아커넥트" through the search window and befriend).

Specifications	STINGER		Specifications	2.5 gasoline turbo	3.3 gasoline turbo
	18" wheel	19" wheel			
Overall length × Overall width × Overall height (mm)	4,830 × 1,870 × 1,400		Displacement (cc)	2,497	3,342
Wheel tread	Front (mm)	1,596	Max. power (ps/rpm)	304 / 5,800	373 / 6,000
	Rear (mm)	1,647	Max. torque (kgf·m/rpm)	43.0 / 1,650 ~ 4,000	52.0 / 1,300 ~ 4,500
Wheelbase (mm)	2,905		Brake (Front/Rear)	Mando: Ventilated disc / Solid disc, Brembo: Ventilated disc / Ventilated disc	
			Suspension (Front/Rear)	Dual MacPherson strut / Multi-link (5-link)	

Model		Displacement (cc)	Unladen vehicle weight (kg)	Transmission	Class	Combined CO ₂ emissions (g/km)	City fuel economy (km/ℓ)	Highway fuel economy (km/ℓ)	Combined fuel economy (km/ℓ)
2.5 gasoline turbo	2WD	(18" tires/all season)	2,497	1,690	8-speed AT	151	9.8	13.4	11.2
		(19" tires/all season)	2,497	1,705	8-speed AT	156	9.7	12.4	10.8
	AWD	(18" tires/all season)	2,497	1,755	8-speed AT	166	9.1	11.8	10.2
		(19" tires/all season)	2,497	1,770	8-speed AT	170	9.0	11.5	10.0
3.3 gasoline turbo	2WD	(19" tires/all season)	3,342	1,775	8-speed AT	192	7.9	10.7	9.0
		(19" tires/summer)	3,342	1,775	8-speed AT	192	7.9	10.2	8.8
	AWD	(19" tires/all season)	3,342	1,845	8-speed AT	203	7.5	10.2	8.5
		(19" tires/summer)	3,342	1,845	8-speed AT	202	7.4	10.0	8.4

* Fuel economy figures are for normal driving mode. Actual figures may vary according to driving habits, vehicle load and maintenance, road conditions and outside temperature.



Kia maintains the same prices and sales conditions nationwide to safeguard customers' trust.

Discrepancies between the brochure and products sold may occur due to changes since the time of printing. Specifications may change due to suppliers' conditions. Photographs may depict optional features. Please refer to the most recent monthly price list when purchasing a car and contact a sales representative.

- Colors depicted in photographs may differ from the actual colors due to printing limitations.
- Navigation functions and information displayed may differ according to the time of the navigation system update.
- Caution: Please read the car manual before initial use for safe driving.
- Please recycle this booklet and protect the environment.
- Customer center: 080-200-2000

01/02
2023

Publication date



Movement that inspires



This PDF file is for reference only

Discrepancies between the brochure and products sold may occur due to the time of printing. Please refer to the most recent monthly price list when purchasing a car and contact a sales representative.