

CTS



Cadillac

2018



INNOVATIVE.
SOPHISTICATED.
AND ABSOLUTE
ELEGANCE.

Ingenious technology. Inspiring performance.
Precise craftsmanship. Together they are at
your command to turn each and every drive
into a masterful experience.

The 2018 CTS.



CTS Luxury in Radiant Silver Metallic. Shown with available equipment.

PASSIONS



Innovation
Performance
Craftsmanship



A collection of engines

offers only one choice. Performance.





Every millimeter is a chiseled

vision of modern craftsmanship





Attention to detail

makes the interior truly transporting



FEATURES

Technology
Performance
V-Sport
Interior
Exterior
Safety
Selections



CTS Premium Luxury in Stellar Black Metallic. Shown with available equipment.



| TECHNOLOGY

A VARIETY OF TECHNOLOGIES. A SINGLE FOCUS.

The CTS is equipped with advanced technologies that deliver you powerful promises—masterful services and convenience. From the satisfying feel of controls to seamless digital interfaces, all meet your needs with the greatest elegance and efficiency.

OFFERED FEATURES: CADILLAC USER EXPERIENCE WITH PHONE INTEGRATION • WIRELESS CHARGING • BOSE® TECHNOLOGY • HEAD-UP DISPLAY • ADAPTIVE REMOTE START

More than information at your fingertips

The Cadillac user experience puts a suite of information and entertainment offerings, including climate, audio, settings control and available 3-D GPS Navigation at your command.

Stay connected or engaged

Compatible devices can be powered with the Wireless Charging feature.²

Your phone, even smarter

Phone Integration with Apple CarPlay™¹ compatibility allows you to access your contacts, Apple Music™ and other information from your iPhone® with a touch of the screen, shown below. You can also access Siri,[®] so features are easily accessible to you or your front-seat passenger. Phone Integration also offers Android™ Auto¹ compatibility.

1. Vehicle user interfaces are products of Apple and Google and their terms and privacy statements apply. Requires compatible smartphone and data plan rates apply. 2. The system wirelessly charges one PMA- or Qi-compatible mobile device. To check for phone or other device compatibility, see my.cadillac.com.



CTS Light Platinum interior shown with Apple CarPlay and other available equipment.

A special venue deserves audio to match

A premium 11-speaker Bose sound system is standard equipment. And for a more immersive experience, an available 13-speaker Bose Surround system features Centerpoint® 2 surround technology.



Performance front and center

Available Head-Up Display (HUD) projects selected information onto the front windshield, so you can keep your eyes on the road.



A head start is a smart start

Integrated into your key fob, Adaptive Remote Start engages the engine from up to 90 meters away. It can also sense outside temperature to activate the appropriate cabin climate control, as well as heat your steering wheel when needed.





| PERFORMANCE

PROVEN POWER AND ENDURANCE

Tested on the famed Nürburgring track, the CTS is validated to perform for you. Experience authoritative acceleration and dynamic handling each and every moment. From remarkably powerful and efficient engines, to precise handling and a finely tuned suspension, driving the 2018 CTS is to enjoy the prerogatives of performance.

OFFERED FEATURES: ACTIVE FUEL MANAGEMENT • FRONT BREMBO® PERFORMANCE BRAKES • 3.6L V6 TWIN TURBO, 3.6L V6 OR 2.0L I4 TURBO ENGINES AND 8-SPEED AUTOMATIC TRANSMISSION • MAGNESIUM PADDLE SHIFTERS AND DRIVER-SELECTABLE MODES • MAGNETIC RIDE CONTROL • WEIGHT BALANCE • ALL-WHEEL DRIVE WITH ACTIVE TORQUE TECHNOLOGY

Innovation firing on all cylinders

Active Fuel Management imperceptibly activates or deactivates 2 of the 6 cylinders, found within the 3.6L engine, according to your driving needs.

Race-proven

Carved from lightweight aluminum alloy, the available Brembo® front brakes bring a host of advantages including greater stopping power and wear resistance.

Fierce and efficient engine options

For maximum performance, the available 3.6L V6 Twin Turbo delivers a pulse-racing 420 hp and 430 lb-ft of torque. The available 3.6L V6 delivers 335 hp. The standard 2.0L Turbo 4-cylinder delivers a potent 268 hp and a Cadillac-estimated 13 kilometers per litre! All engines are paired with an intelligent 8-speed automatic transmission for responsive shifting, and each features Auto Stop/Start technology for optimal efficiency.

Power controlled is power enjoyed

Magnesium Paddle Shifters allow you to move through the 8-speed automatic transmission manually. And driver-selectable modes (Tour, Sport, Snow/Ice and, with V-Sport models, Track) let you tune the steering, suspension and transmission depending on road conditions and your preference.

Reading the road 1000 times a second

Cadillac's available Magnetic Ride Control automatically adjusts the suspension to road quality and weather conditions. The system reads the road up to 1000 times a second, tuning the suspension for a highly responsive, smoother drive in otherwise shaky scenarios.

Precision balanced with 50/50 weight distribution

Advanced alloys and engineering create near-perfect 50/50 front-to-rear weight distribution for improved handling and cabin quietness. The Rear-Wheel Drive CTS is among the lightest in its class.

Sure footing

For additional control, available All-Wheel Drive with Active Torque Technology maximizes stability and handling; delivering impeccable control in less than perfect driving conditions.

¹. Based on Cadillac testing. Official EPA estimates not yet available.





| V-S P O R T

IN JUST 4.4 SECONDS, THE CTS V-SPORT REVEALS ITSELF

That's how long it takes the 420-hp, Twin Turbo V6 engine to propel this remarkable sedan from 0 to 100 km/h. A variety of sophisticated handling and vehicle management features assure all this power remains firmly under your control.

CTS V-Sport 3.6L V6 Twin Turbo engine shown with available dealer-installed equipment.

OFFERED FEATURES: 8-SPEED AUTOMATIC TRANSMISSION • 18" WHEELS WITH SUMMER-ONLY PERFORMANCE TIRES • ELECTRONIC LIMITED-SLIP DIFFERENTIAL • HEAD-UP DISPLAY • V-SPORT GAUGE CLUSTER • PERFORMANCE DRIVER-SELECTABLE MODES • V-SPORT PREMIUM LUXURY

Partner in performance

Paired with the 420-hp, Twin Turbo V6 engine, the 8-speed automatic transmission features Performance Algorithm Shifting. This advanced technology maximizes performance by seamlessly selecting the best gear for quicker shifts and a more satisfying drive.

Style comes full circle

18" 10-spoke summer-only wheels with Ultrabright machined finish with After Midnight painted pockets compliment the V-Sport's aggressive stance.

Conquer curves

The electronic Limited-Slip Differential (eLSD) automatically redirects power to the drive wheels with the best traction, for better corner exit acceleration and making driving well balanced throughout a turn in most road conditions.

Project the information that matters

The available Head-Up Display (HUD) projects speed, audio, navigation and other information onto the front windshield, so you can keep your eyes on the road.

Performance: a customized view

Use the available customizable V-Sport Gauge Cluster to emphasize your tachometer, mph or other information in three reconfigurable themes.

Select the most satisfying ride

Four driving modes – Tour, Sport, Track and Snow/Ice – calibrate steering, suspension and transmission depending on your preference and road conditions.

The extraordinary made even more so

V-Sport Premium Luxury enhancements include 20-way performance front seats, Tri-Zone Climate Control, a reconfigurable gauge cluster, as well as a full-color Head-Up Display (HUD).



CTS V-Sport Premium Luxury in Phantom Gray Metallic. Shown with available equipment.





| I N T E R I O R

CURATED TO COMPLEMENT. EACH AND EVERY DRIVE.

The tailored CTS interior will delight you. Surround yourself with striking materials, such as real wood trim and supple, yet strong available Semi-Aniline leather. Every option is curated to work together beautifully, so no matter which you choose, the cabin will be a stunning expression of your personal style.

CTS V-Sport Premium Luxury interior in Kona Brown. Shown with available equipment.

OFFERED FEATURES: 20-WAY PERFORMANCE FRONT SEATS • TRI-ZONE CLIMATE CONTROL • AMBIENT INTERIOR LIGHTING • CUSTOMIZABLE 12.3" LCD DISPLAY • REAR VISION CAMERA • SURROUND VISION • REAR CAMERA MIRROR

Preferred seating

20-way performance front seats are available in Semi-Aniline leather and offer you power-adjustable seatback bolsters and manual thigh support.

Very personal comfort

Available Tri-Zone Climate Control allows driver, front and rear passengers to adjust temperatures individually.

Lighting so ingeniously hidden, it's revealing

Available ambient Interior Lighting employs LED spotlights and light pipes to subtly highlight the craftsmanship within your cabin.



Determine your data

An available, customizable 12.3" diagonal LCD Gauge Cluster allows you to choose how to display vehicle data, entertainment, communications and navigation information in full color.

A forward-looking rear view

When in Reverse, the standard Rear Vision Camera automatically displays a live image of the area behind you on the Cadillac user experience screen. Guidelines plot your intended trajectory, helping you see objects that might be in your path.

A higher look at what surrounds

With available Surround Vision, you have a bird's-eye view of the area immediately surrounding the vehicle when in low-speed Drive or Reverse. This view, projected on the Cadillac user experience screen, helps increase your awareness when parking or in reverse.

A brilliant look back

With just a touch, the available Rear Camera Mirror streams HD video to the rearview mirror. This view (A) offers a wider, less obstructed view than an ordinary mirror. And a simple toggle instantly reverts it back to a traditional mirror (B).





| EXTERIOR

METAL RICH WITH MEANING

Cutting-edge aerodynamics, innovative lighting and advanced metal work. These, and the belief that a vehicle should move you even when standing still, are all hallmarks of CTS exterior design.

OFFERED FEATURES: CRYSTALLINE LED LIGHTS • INLAID HOOD • INTELLIBEAM HEADLAMPS • INTEGRATED REAR SPOILER • ILLUMINATING DOOR HANDLES

Illuminating innovation

The hundreds of crystalline LED lights that accentuate the exterior are also more energy efficient than traditional technologies. Standard High-Intensity Discharge (HID) headlamps feature Adaptive Forward Lighting, this technology automatically turns the headlamps according to your steering wheel and provides you with improved road illumination.

A grand entrance is all but guaranteed

The powerful lines, curves and planes of the inlaid hood are the metalcrafter's work at its most sophisticated.

Innovation you can see

Available Intellibeam headlamps automatically turn high beams on or off according to outside conditions. The system also disengages high beams when approaching headlamps or taillamps are within range.

A concealed advantage

Hidden behind the grille, the Active Aero Grille Shutters automatically close to maximize aerodynamics when additional cooling is not required.

A smart finish

The integrated rear spoiler features a 48-LED center brake lamp to help manage airflow and create downward force.

Improved visibility with impressive style

Available Illuminating Door Handles deliver both.



CTS Premium Luxury in Radiant Silver Metallic. Shown with available equipment.



| SAFETY

A HEALTHY OBSESSION WITH SAFETY

A true focus on driver and passenger well-being is never done. In the v, this focus manifests itself in innovations and advances that deliver nothing less than confidence.

OFFERED FEATURES: ADAPTIVE CRUISE CONTROL • FORWARD COLLISION ALERT • LANE KEEP ASSIST WITH LANE DEPARTURE WARNING • SAFETY ALERT SEAT • LANE CHANGE ALERT WITH SIDE BLIND ZONE ALERT • SAFETY CAGE • AUTOMATIC SAFETY BELT TIGHTENING • REAR CROSS TRAFFIC ALERT • FORWARD AND REVERSE AUTOMATIC BRAKING

CTS in Radiant Silver Metallic. Shown with available equipment.

Surrounded by safety innovation

FRONT

Maintain an intelligent space

Available Adaptive Cruise Control employs both radar and cameras to maintain a set selected distance between you and the detected vehicle ahead.

Truly forward thinking

Available Forward Collision Alert monitors traffic ahead, alerting you if a potential collision is imminent, while available Following Distance Indicator shows the following time to the detected vehicle ahead (in seconds) in the Driver Information Center (DIC).

SIDE

Travel the straight and smart

Using a camera to sense lane boundaries, available Lane Keep Assist gently turns the steering wheel if the system anticipates the vehicle is leaving the lane unintentionally or without using your turn signal. Working in conjunction with the available Safety Alert Seat, Lane Departure Warning, available on the CTS, sends a visual alert in the cluster and a warning pulse through the seat cushion if your vehicle crosses the lane marking.

All clear

Available Lane Change Alert surveys the area well beyond the side blind zone, and illuminates the side mirror warning icon to alert you of a rapidly approaching vehicle. Available Side Blind Zone Alert monitors your blind spots, so if a vehicle is in the adjacent lane it also illuminates the side mirror icon. In both features, if you've activated your turn signal, the icon on the side mirror will flash to alert you.

INSIDE

Strong enough to crumple

The ultra-high-strength steel safety cage features strategically placed crumple zones that help absorb and manage crash energy. The safety cage is also equipped with 10 standard air bags, including knee air bags for the driver and front passenger, and side-impact air bags for front and rear passengers.

Firmly reassuring

During emergency braking or sudden maneuvers, available Automatic Safety Belt Tightening activates. When conditions revert to normal, they ease automatically.

Grabs your attention. Subtly.

Cadillac's available patented Safety Alert Seat sends a discreet pulse to the left, right or both sides of the driver's seat, indicating the direction of the threat — left, right, front or rear.

REAR

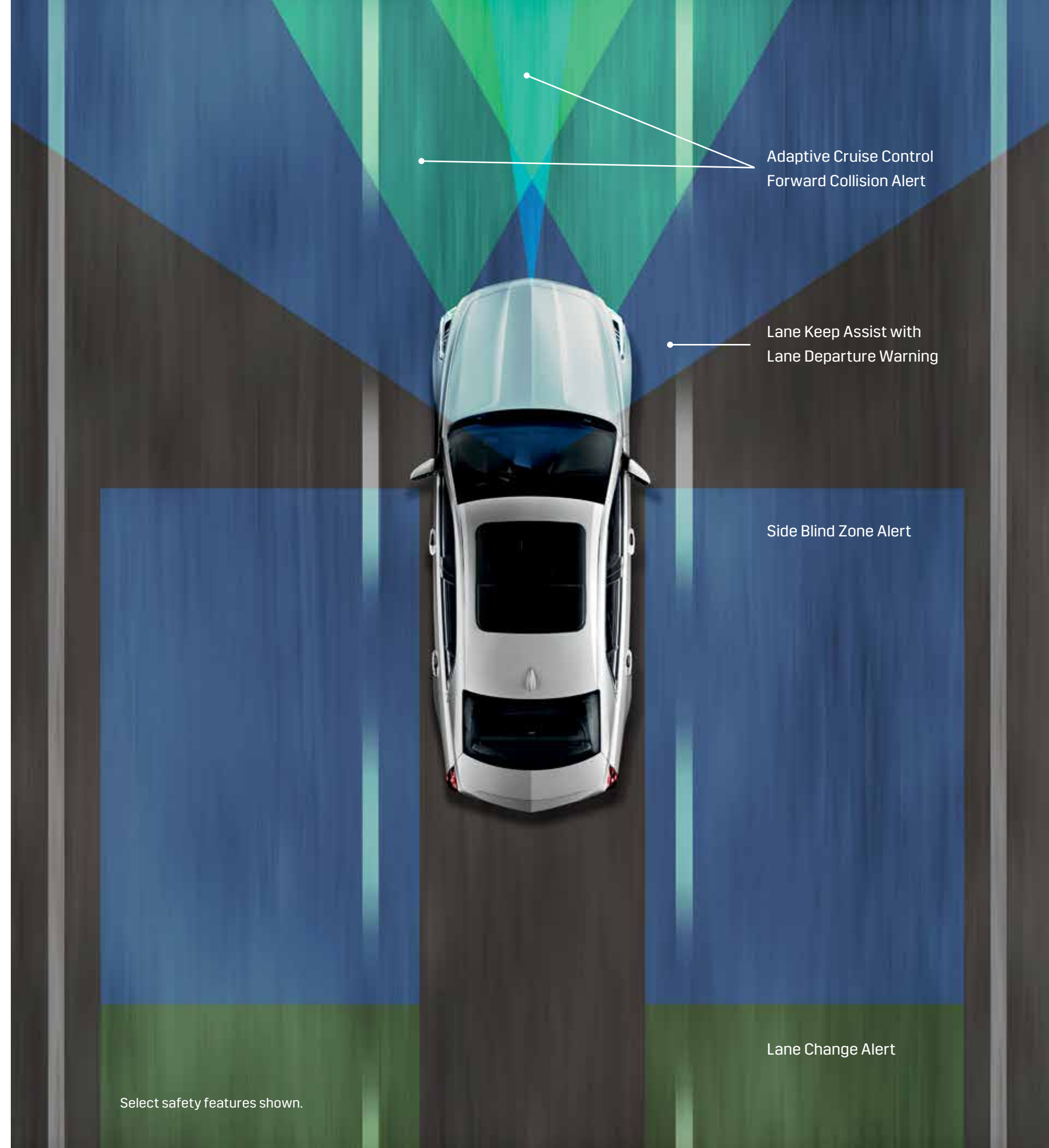
Brighter backing out

When backing out of a parking space, available Rear Cross Traffic Alert warns of oncoming traffic to either side of your vehicle and provides an audible warning or a pulse to the Safety Alert Seat.

Gain precious time

Up to certain speeds, available Forward and Reverse Automatic Braking can sense imminent forward and reverse collisions and automatically engage the brakes, helping you reduce crash impacts.

Safety features are no substitute for the driver's responsibility to operate the vehicle in a safe manner. The driver should remain attentive to traffic, surroundings and road conditions at all times. Read the vehicle Owner's Manual for more important safety information.



Adaptive Cruise Control
Forward Collision Alert

Lane Keep Assist with
Lane Departure Warning

Side Blind Zone Alert

Lane Change Alert

Select safety features shown.

STANDARD FEATURES

2018 CTS Features

DRIVETRAIN

2.0L Turbo Direct-Injection, VVT 4-Cylinder Engine With 268 hp and 400 Nm of torque with Auto Stop/Start
Transmission 8-speed automatic
Exhaust Dual outlets, stainless steel
Rear-Wheel Drive

CHASSIS AND SUSPENSION

Steering ZF premium, premium rack-and-pinion, electric system
Suspension Ride and handling

EXTERIOR

Active Aero Grille Shutters
Lighting HID headlamps with LED vertical light signatures
 Adaptive Forward Lighting
Mirrors Integrated turn signal indicators
 Outside heated power-adjustable,
 Power folding and auto-dimming, Body-color
Solar-Absorbing Windshield
Spoiler Rear decklid integrated with LED Center High-Mounted Stop Lamp (CHMSL)
Windshield Wipers Driver-selectable variable speed
Wheels 17" aluminium wheels with painted finish (see page 45 for more details)

INTERIOR

Adaptive Remote Start Activates heated/ventilated seats (if equipped), climate control system and rear defroster
Air Filtration System Automatic air circulation and air quality
Armrest Center front and rear with cupholders
Audio Cruise Control and Driver Information Center (DIC) controls
Audio System Bose® premium 11-speaker sound system
Bluetooth®¹ Hands-Free Calling with Natural Voice Recognition
Cadillac user experience² Information and media control system with 8" diagonal full-color LCD capacitive multi-touch screen with Phone Integration compatability with Apple CarPlay™ and Android™ Auto

Console Center Front with integrated shifter, covered storage and two cupholders with motorized cover
 Console, overhead includes reading lamps; also includes universal home remote, UltraView® Sunroof and power rear-window sunshade controls (if equipped)
Cruise Control Electronic, with set and resume speed
Door Locks Power programmable with lockout protection
Dual-Zone Automatic Climate Control With individual settings for driver and front passenger and Automatic Moisture Detection and Defogging
Floor Mats Carpeted front and rear
Gauge Cluster 5.7" color display, includes driver personalization, warning messages and vehicle information with full-color reconfigurable Driver Information Center display

Glove Box Electronic push-button opening
Keyless Access EZ Key full Keyless Access offers keyless entry to all doors and trunk
Keyless Ignition With Push-Button Start
Lighting LED lighting for glove box, front cupholders, overhead console, front and rear passenger footwell, map pockets, rear assist handles and cargo area
Magnesium Paddle-Shift Controls On steering wheel
Memory Package Two presets for driver's seat position and outside mirrors, and vehicle exit preset function
Mirror Automatic-dimming rearview
Power Outlets Three auxiliary
Rear Vision Camera Includes guidelines indicating the vehicle's projected path when vehicle is put in reverse
Retained Accessory Power Power windows, audio system and sunroof (if equipped) remain operational after ignition is switched off for 10 minutes or until driver's door is opened
Steering Wheel Leather-wrapped rim, with Audio, Driver Information Center and cruise controls and Manual-Adjustable Rake and Telescope
USB ports³ Three with auxiliary audio connectivity
Visors Driver and front passenger illuminated vanity mirrors
Windows Power, with front and rear express-up/-down; includes rear passenger lockout
Wireless Charging⁴ Inductive charging system for portable devices

SAFETY AND SECURITY

Air Bags⁵ Driver and front-passenger frontal, front-seat thorax and pelvic, rear thorax for outboard seating positions, side-curtain and driver and front-passenger knee, passenger sensing system
Audible Alert Theft-Deterrent System
Electronic Stability Control System StabiliTrak®
Rear Park Assist
Safety Belts Lap and shoulder belts for all positions with belt-to-seat mounting and pretensioners for driver and front passenger, rear outboard comfort guides
Traction Control All-speed with brake and engine intervention

AVAILABLE FEATURES

Magnetic Ride Control
Navigation Integrated with Cadillac user experience and includes voice and text guidance; includes Bose® 13-speaker Centerpoint® Surround Sound system (requires seating package)
Performance Package Brembo® front, four-wheel vented disc with antilock braking system, performance
Seating Package Includes leather seating surfaces, heated/ventilated driver and front passenger seats, split-fold rear seats, outside, heated, power-adjustable, driver-side auto-dimming, body-color, manual folding mirrors with integrated turn signal indicators and puddle lamps, ambient lighting on instrument panel and door, heated power tilt and telescopic steering wheel
Suspension Performance
UltraView® Sunroof
Wheels 18" x 8.5" (45.7 cm x 21.6 cm) 10-spoke polished alloy
 18" x 8.5" (45.7 cm x 21.6 cm), V-Sport Ultra-Bright machined finish alloy with After Midnight painted pockets (see page 45 for more details)

LUXURY

Enjoy 2018 CTS Features + these enhancements:

Brakes Brembo® front, four-wheel vented disc with antilock, performance brake linings⁹
Driver Awareness Package Forward Collision Alert, Forward Distance Indicator, Side Blind Zone Alert®, Lane Change Alert, Rear Cross Traffic Alert, Lane Keep Assist with Lane Departure Warning, IntelliBeam headlamps, Safety Alert Seat, Rainsense Wipers, Following Distance Indicator
Magnetic Ride Control
Navigation Integrated with Cadillac user experience and includes voice and text guidance; includes Bose® 13-speaker Centerpoint® Surround Sound system (requires seating package)
Seating Package Includes leather seating surfaces, heated/ventilated driver and front passenger seats, split-fold rear seats, outside, heated, power-adjustable, driver-side auto-dimming, body-color, manual folding mirrors with integrated turn signal indicators and puddle lamps, ambient lighting on instrument panel and door, heated power tilt and telescopic steering wheel
Suspension Performance
Wheels 18" x 8.5" (45.7 cm x 21.6 cm), V-Sport Ultra-Bright machined finish alloy with After Midnight painted pockets (see page 45 for more details)

AVAILABLE FEATURES

3.6L Direct-Injection, VVT V6 engine With 335 hp and 386 Nm torque, Auto Stop/Start and Active Fuel Management
All-Wheel Drive
Rear Camera Mirror
UltraView® Sunroof Power, tilt-sliding, electric with express-open/-close over front-row seating and power sunshade
Wheels (see page 45 for more details)
 18" x 8.5" (45.7 cm x 21.6 cm) 10-spoke polished alloy

PREMIUM LUXURY

Enjoy Luxury Features + these enhancements:

Automatic Parking Assist Includes front, rear, parallel and perpendicular parking assist
Door Handles Illuminating
Luxury Package Includes 230V power receptacle, heated rear outboard seating positions, illuminated front door sill plates, tri-zone climate control, power rear window sunshade, manual rear side windows sunshades, illuminating door handles and color head-up display
Navigation Integrated with Cadillac user experience and includes voice and text guidance; includes Bose® 13-speaker Centerpoint® Surround Sound system (requires seating package)
Power Outlet 110V household-style power outlet located in front center console
Rear Camera Mirror
Sunroof UltraView®, power
Surround Vision Bird's-eye view of vehicle

AVAILABLE FEATURES

3.6L Direct-Injection, VVT V6 engine With 335 hp and 386 Nm torque, Auto Stop/Start and Active Fuel Management
All-Wheel Drive
Driver Assist Package Adaptive Cruise Control®, Front/Rear Automatic Braking and Automatic Safety Belt Tightening,
Performance Seat and Cluster Package Includes 20-way performance driver and front passenger seats, aluminium alloy sport pedals and 12.3" reconfigurable gauge cluster with Driver Information Center
Wheels (see page 45 for more details)
 18" x 8.5" (45.7 cm x 21.6 cm) 10-spoke polished alloy

V-SPORT

Enjoy Luxury Features + these enhancements:

3.6L Direct-Injection, DOHC, VVT, V6 Twin Turbo With 420 hp and 583 Nm of torque with performance modes including cornering control, fast off and brake assist
Automatic Parking Assist Includes front, rear, parallel and perpendicular parking assist
Electronic Limited-Slip Differential (eLSD)
Grille With black chrome accents
Steering Wheel Leather-sport
Surround Vision
Wheels 18" x 8.5" (45.7 cm x 21.6 cm) front, 18" x 9.5" rear (45.7 cm x 24.1 cm) Ultra-Bright machined finish alloy with After Midnight painted pockets (see page 45 for more details)

AVAILABLE FEATURES

Wheels 18" x 8.5" (45.7 cm x 21.6 cm) 10-spoke polished alloy

V-SPORT PREMIUM LUXURY

Enjoy Premium Luxury Features + these enhancements:

3.6L Direct-Injection, DOHC, VVT, V6 Twin Turbo engine With 420 hp and 583 Nm of torque with performance modes including cornering control, fast off and brake assist
Driver Assist Package Adaptive Cruise Control®, Front/Rear Automatic Braking and Automatic Safety Belt Tightening
Performance Seat and Cluster Package Includes 20-way performance driver and front passenger seats, aluminium alloy sport pedals and 12.3" reconfigurable gauge cluster with Driver Information Center
Wheels 18" x 8.5" (45.7 cm x 21.6 cm) front, 18" x 9.5" rear (45.7 cm x 24.1 cm) Ultra-Bright machined finish alloy with After Midnight painted pockets (see page 45 for more details)

AVAILABLE FEATURES

Seating Semi-Aniline full-leather
Wheels 18" x 8.5" (45.7 cm x 21.6 cm) 10-spoke polished alloy

1. Go to my.cadillac.com/learn to find out which phones are compatible with the vehicle. **2.** Cadillac user experience functionality varies by model. Full functionality requires compatible Bluetooth® and smartphone. Some devices require USB connectivity. **3.** Not compatible with all devices. **4.** The system wirelessly charges one PMA- or Qi-compatible mobile device. To check for phone or other device compatibility, see my.cadillac.com. **5.** Always use safety belts and child restraints. Children are safer when properly secured in a rear seat in the appropriate child restraint. See the Owner's Manual for more information. **6.** Before making a lane change, always check the Side Blind Zone Alert display and the side and inside rear mirrors, look over your shoulder for vehicles and hazards, and activate the turn signal. **7.** Do not use summer-only tires in winter conditions, as it would adversely affect vehicle safety, performance and durability. Use only GM-approved tire and wheel combinations. Unapproved combinations may change the vehicle's performance characteristics. For important tire and wheel information go to https://my.cadillac.com/learnAbout/cadillactires/ or see your dealer. **8.** Adaptive Cruise Control is no substitute for the driver's personal responsibility to operate the vehicle in a safe manner. The driver needs to remain attentive to traffic and road conditions and provide the steering, braking or other inputs necessary to retain control of the vehicle. **9.** Vehicles equipped with these linings will experience faster accumulation of brake dust on wheel surfaces and may produce more noise than with standard linings.

OWNER BENEFITS

Our owners deserve it all. That's why 2018 vehicles are backed by a comprehensive suite of owner benefits.

ABOUT THIS CATALOG

We have tried to make this catalog comprehensive and factual. We reserve the right, however, to make changes at any time, without notice, in prices, colors, materials, equipment, specifications, models and availability. Specifications, dimensions, measurements, ratings and other numbers in this catalog and other printed materials provided at the dealership or affixed to vehicles are approximates based upon design and engineering drawings and prototypes and laboratory tests. Your vehicle may differ due to variations in manufacture and equipment. Since some information may have been updated since the time of printing, please check with your Cadillac dealer for complete details. Any variations in colors shown are due to reproduction variation in the printing process. Cadillac reserves the right to lengthen or shorten the model year for any product for any reason, or start and end model years at different times. Note: Some photographs in this catalog show vehicles with optional equipment.

ENGINES

Cadillac products are equipped with engines produced by GM Powertrain or suppliers to GM worldwide. The engines in Cadillac products may also be used in other GM makes or models.

TIRE SEALANT AND COMPRESSOR KIT

If your vehicle has a tire sealant and compressor kit, it uses a liquid tire sealant to temporarily seal up to a 6mm puncture in the tread area of the tire. After using the inflator kit, it is recommended to take the tire to an authorized dealer for inspection and repair as soon as possible but at least within 161 km of driving. The tire sealant cannot seal and inflate sidewall damage, punctures larger than 6mm or a tire that has unseated from the wheel. The sealant can only be used on one tire, one time before its expiration date.

ASSEMBLY

Cadillac vehicles and their components are assembled or produced by different operating units of General Motors, its subsidiaries or suppliers to GM worldwide. We sometimes find it necessary to produce Cadillac vehicles with different or differently sourced components than originally scheduled. Since some options may be unavailable when your vehicle is assembled, we suggest that you verify that your vehicle includes the equipment you ordered or, if there are changes, that they are acceptable to you.

COVERED FOR 4 YEARS/100,000 KM (WHICHEVER COMES FIRST)

Powertrain limited warranty with no deductible, Roadside Assistance Program¹ and Courtesy Transportation Program¹.

COVERED FOR 4 YEARS/100,000 KM (WHICHEVER COMES FIRST)

Bumper-to-bumper coverage. Tires—defects in material and workmanship; repairs made to correct any vehicle defect; corrosion on body sheet metal panels.

RUST-THROUGH COVERAGE

Cadillac vehicles are designed and built to resist corrosion and rust-through corrosion. Any body sheet metal that rusts through (in the form of an actual hole in the sheet metal) is covered for six years and unlimited mileage. Cosmetic or surface corrosion—resulting from stone chips or scratches in the paint, for example—is not included in the rust-through coverage. Application of additional rust-inhibiting materials is not required under the rust-through coverage and none is recommended. See your Cadillac dealer for terms of this limited warranty.

FLEET ORDERS

Some standard content may be deleted with fleet orders. See dealer for details.

WHEELS



17" ALUMINIUM WHEELS WITH PAINTED FINISH

Standard on CTS



18" ALUMINIUM WHEELS WITH POLISHED FINISH

Available on CTS Standard, Luxury, Premium Luxury, V-Sport and V-Sport Premium Luxury



18" ALUMINIUM WHEELS WITH V-SPORT ULTRABRIGHT MACHINED FINISH AND AFTER MIDNIGHT PAINTED POCKETS

Standard on Luxury, Premium Luxury, V-Sport, V-Sport Premium Luxury. Available on CTS Standard. Includes performance, summer-only¹ runflat tires on V-Sport trims.

VEHICLE DIMENSIONS

SELECT CTS DIMENSIONS All measurements in mm.

EXTERIOR

Wheelbase	2911
Overall Length	4966
Body Width	1834
Body Width (with mirrors)	2052
Overall Height	1453
Front Track Width	1560
Rear Track Width	1567

INTERIOR

Head Room, Front	1026
Head Room, Rear	952
Leg Room, Front	1161
Leg Room, Rear	899
Shoulder Room, Front	1445
Shoulder Room, Rear	1392

SELECT CTS CAPACITIES

Fuel (Liters, approx.)	72L
Cargo Volume	388L
Seating Capacity	5

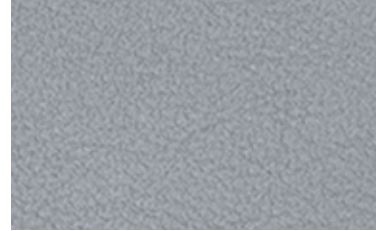
¹ Roadside Assistance Program and Courtesy Transportation Program are not part of the New Vehicle Limited Warranty. A separate booklet titled, "Warranty and Owner Assistance Information" furnished with each new vehicle provides detailed warranty coverage information.

©2018 General Motors. All rights reserved. GM, the GM emblem, Cadillac, the Cadillac Crest, OnStar, the OnStar emblem and the slogans, emblems, vehicle model names, vehicle body designs and other marks appearing in this catalog are the trademarks and/or service marks of General Motors, its subsidiaries, affiliates or licensors. Apple, iPhone and Apple CarPlay are trademarks of Apple Inc., registered in the U.S. and other countries. Android is a trademark of Google, Inc. BlackBerry is a registered trademark of Blackberry. Brembo is a registered trademark of Brembo. Bose and AudioPilot are registered trademarks of Bose Corporation in the U.S. and other countries. Windows is a registered trademark of Microsoft, Inc. Pandora is a registered trademark of Pandora Media, Inc. SiriusXM Satellite Radio is a registered trademark of SiriusXM Radio Inc. Blu-ray is a trademark of Blu-ray Disc Association. Wi-Fi is a registered trademark of Wi-Fi Alliance.[®]

¹ Do not use summer-only tires in winter conditions, as it would adversely affect vehicle safety, performance and durability. Use only GM-approved tire and wheel combinations. Unapproved combinations may change the vehicle's performance characteristics. For important tire and wheel information, go to <https://my.cadillac.com/learnAbout/cadillacTires/> or see your dealer. Lower profile tires damage more easily, especially on rough roads. Damage is not covered under warranty. For more details, go to <https://my.cadillac.com/learnAbout/cadillacTires/> or see your dealer.

INTERIOR COMBINATIONS

LIGHT PLATINUM
LEATHERETTE SEATING
SURFACES



HIGH-GLOSS
SAPELE
WOOD TRIM



JET BLACK
ACCENTS



JET BLACK
FULL-LEATHER SEATS¹



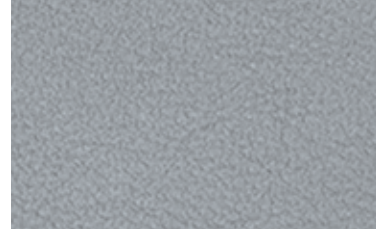
CARBON
FIBER TRIM



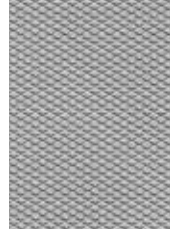
JET BLACK
ACCENTS



LIGHT PLATINUM
LEATHER SEATING SURFACES



ALUMINUM
TRIM



JET BLACK
ACCENTS



LIGHT CASHMERE
FULL-LEATHER SEATS¹



BLACK
OLIVE ASH
WOOD TRIM



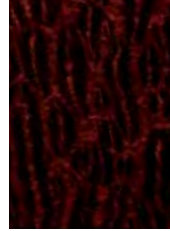
JET BLACK
ACCENTS



JET BLACK
LEATHER SEATING SURFACES



NATURAL
SAPELE
WOOD TRIM



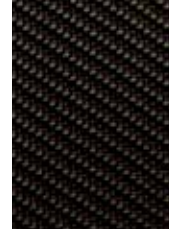
JET BLACK
ACCENTS



JET BLACK
FULL-LEATHER SEATS¹



MORELLO
RED CARBON
FIBER TRIM



MORELLO RED
ACCENTS



LIGHT CASHMERE
LEATHER SEATING SURFACES



BLACK
OLIVE ASH
WOOD TRIM



JET BLACK
ACCENTS



KONA BROWN
FULL-LEATHER SEATS¹



NATURAL
FINISH
ELM WOOD



JET BLACK
ACCENTS

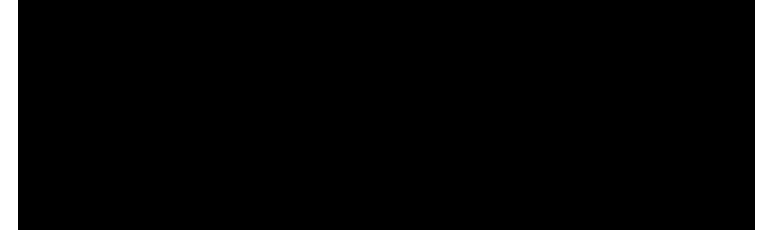


EXTERIOR COLORS

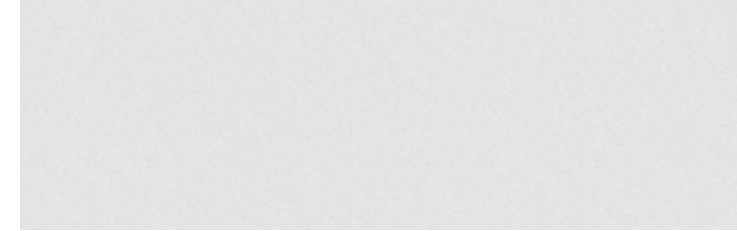
RADIANT SILVER METALLIC



BLACK RAVEN



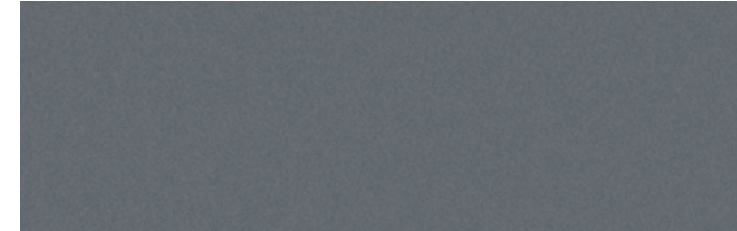
CRYSTAL WHITE TRICOAT¹



DARK ADRIATIC BLUE METALLIC¹



SILVER MOONLIGHT METALLIC¹



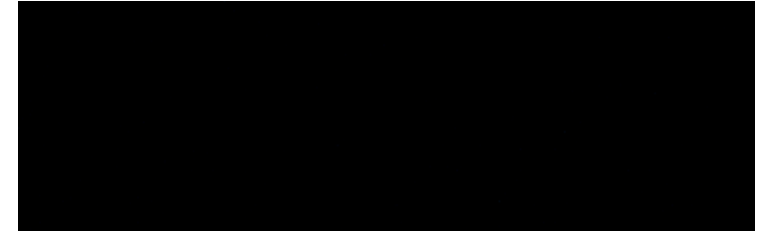
PHANTOM GRAY METALLIC¹



RED OBSESSION TINTCOAT¹



STELLAR BLACK METALLIC¹



SATIN STEEL METALLIC¹



¹ Available at extra cost.

CADILLACARABIA.COM



 /cadillacarabia

 /cadillacarabia

 /cadillacarabia