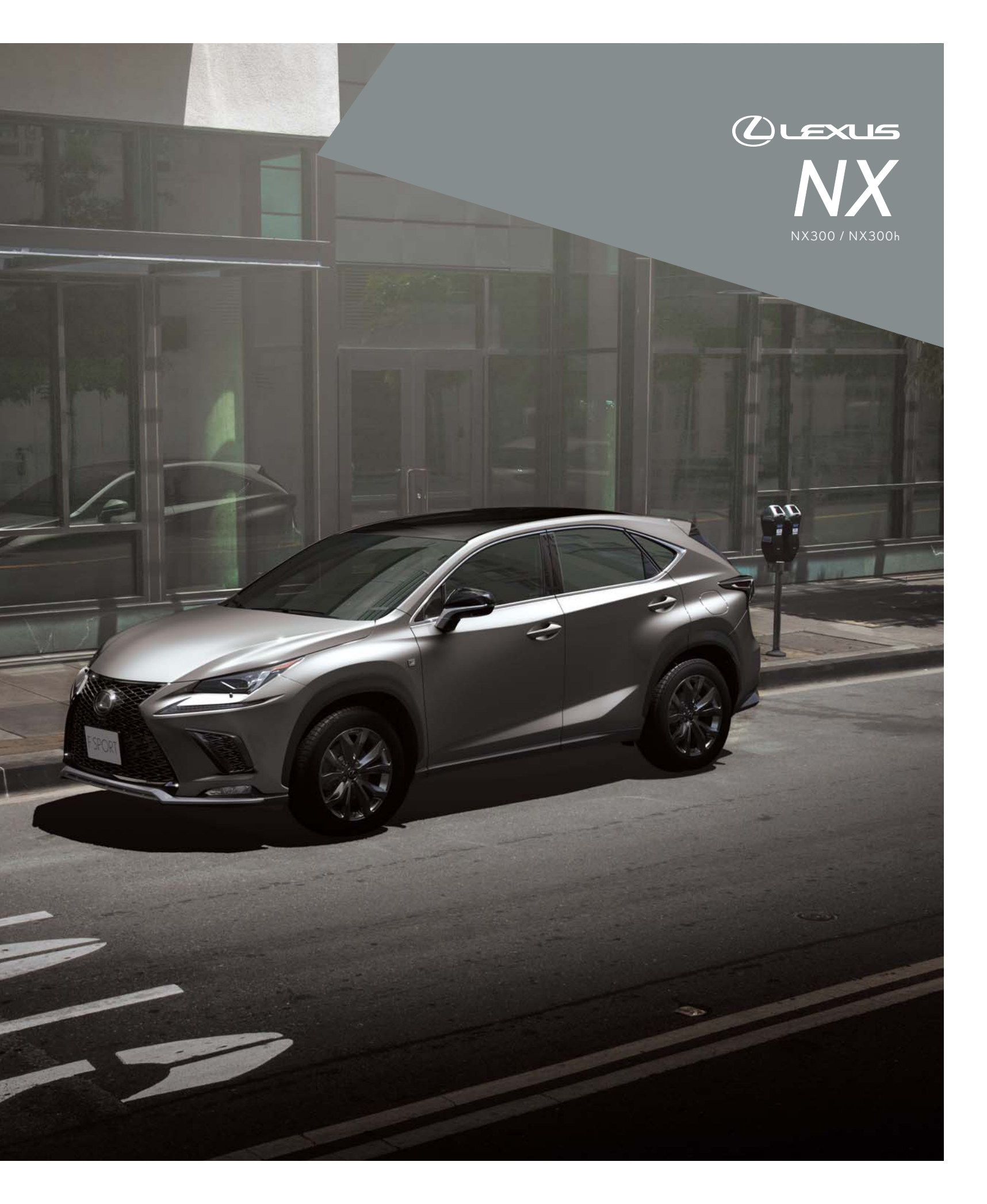


LEXUS

NX

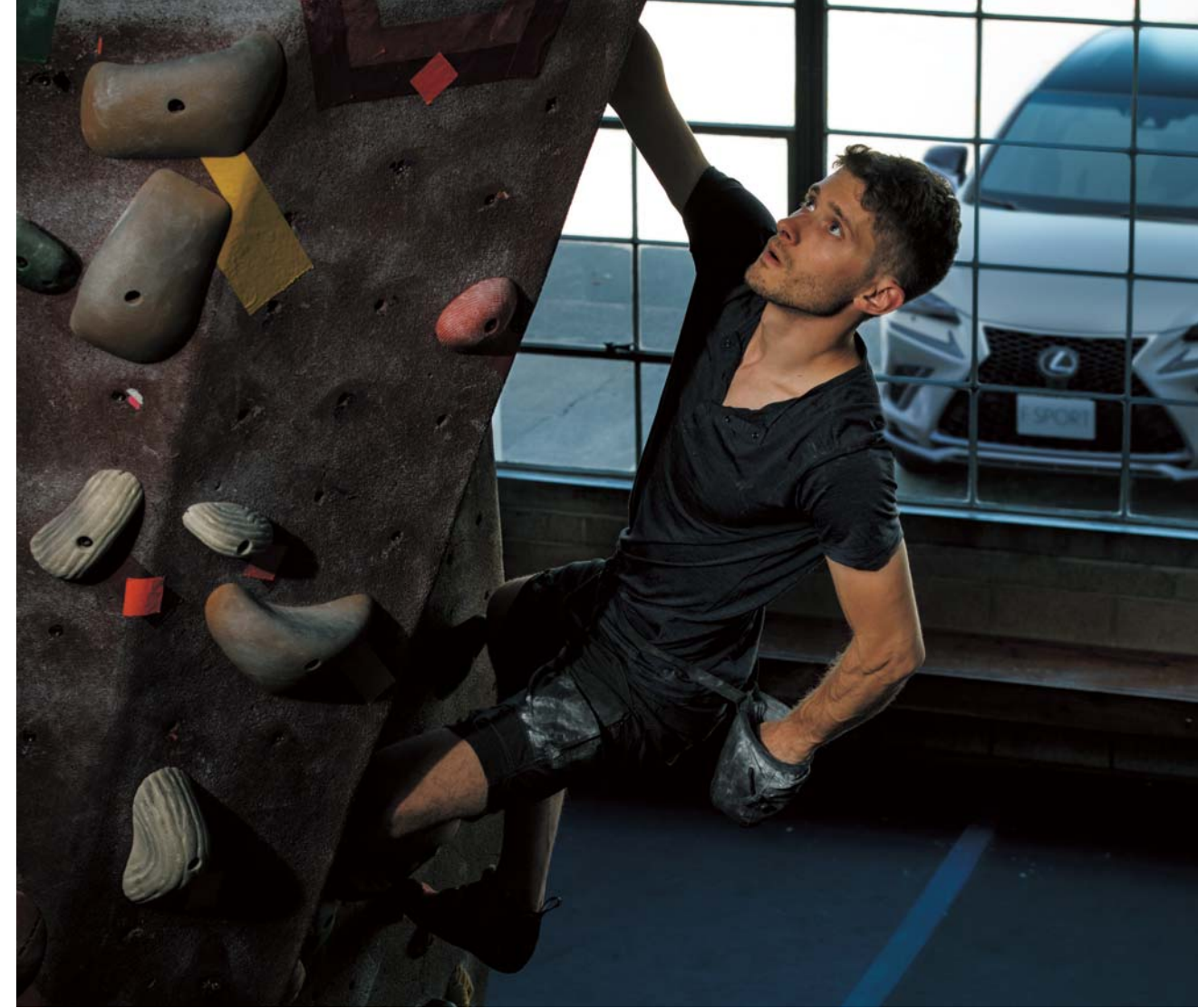
NX300 / NX300h















**CONCEPT**



Premium Urban Sports Gear.  
The NX injects fresh expressions of individuality,  
exhilaration and utility into urban living.





The NX was developed around the core concept of 'Premium Urban Sports Gear', a next-generation Lexus that applies an urban focus to luxury SUVs. 'Premium Urban' aims to create refined solutions to the mobility demands of city living, offering advanced technologies, excellent environmental performance and refined Lexus features that provide outstanding quality and driving pleasure. 'Sports' expresses a dynamic and active attitude that shapes the aggressive and very individual styling, and injects a sporting edge into driving, with sport-honed acceleration, control and handling. It is intrinsically linked with 'Gear', a meticulous focus on

refining every detail to offer the advanced functionality and effortless utility associated with the very best sports equipment, together with the eye-catching design and embrace of advanced technologies that set iconic 'Sports Gear' apart. The result is a game-changing, urban-focused SUV, with the acceleration, agility and handling to effortlessly negotiate city traffic, the utility to meet the ever-changing needs of an active and dynamic lifestyle, fuel efficiency that embodies environment-aware values, and the sophisticated features and refined detail that is a Lexus hallmark.



DESIGN



Fusing superb agility and dynamic individuality with spacious functionality creates a fresh sporting spirit.





## INTERIOR

The blend of functional and structural beauty and attention to detail in the sporty interior further boosts your driving pleasure.



PERFORMANCE



Out on the streets, the NX's poise, responsiveness and exhilaration spark a relish for city driving.

3



**Chassis**

The foundation of the NX's responsive sporty handling is a lightweight, high rigidity body structure made from hot-stamp, high-tensile steel and aluminum, with strategically positioned reinforcements. The use of innovative production technologies including laser screw welding and body adhesives, together with extensive spot welding, enhances the rigidity of panel joints, and contributes to the excellent handling, refined comfort and quiet ride.



**Pre-loaded differential**

This innovative differential pre-loads torque under light loads or low rotational speed, contributing to highly-precise steering for excellent straight-line stability and acceleration performance.



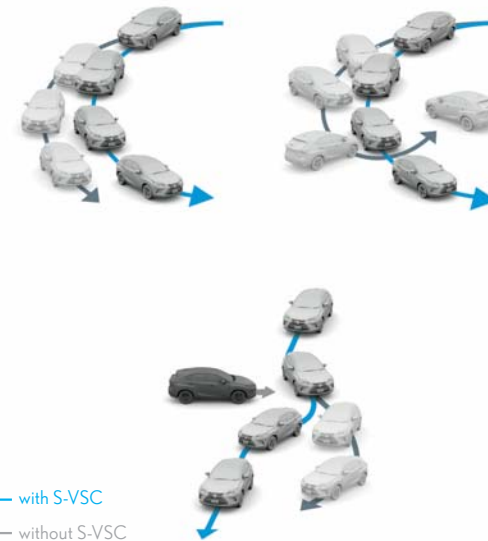
**Aerodynamics**

The NX's superb aerodynamics contribute to fuel-efficient performance and quiet comfort in the cabin, even during high-speed driving. Careful attention paid to reducing drag, including an integrated rear spoiler, spats for all four wheels, and the engine, floor, lower arm and rear underbody covers, contributes to a smooth airflow.



**Front and rear suspension**

The compact and highly-rigid MacPherson strut front suspension and double wishbone rear suspension were optimized to deliver agile handling and luxurious ride comfort. A close focus on individual components included refining the coil springs, stabilizers, shock absorbers, and suspension bushings.



**S-VSC (Steering-assisted Vehicle Stability Control)**

VSC operates in conjunction with the EPS, ABS and TRC to limit and distribute drive power and assist steering torque to help stabilize vehicle behavior and direction, to provide excellent stability and control in various driving conditions.\*

**Drive mode select**

Drive mode select provides integrated control of multiple systems to let you tune performance to suit your driving style. On vehicles equipped with AVS (Adaptive Variable Suspension system), you can select and change between Normal, Eco, Sport S and Sport S+ Modes. In addition, Customize Mode enables drivers to set their preferred settings for the powertrain, AVS, EPS (Electric Power Steering) and air conditioning.



\* EPS: Electric Power Steering. VSC: Vehicle Stability Control. ABS: Anti-lock Brake System. TRC: Traction Control System. Note: Vehicles pictured and specifications detailed in this catalog may vary from models and equipment available in your area. Please inquire at your local dealer for details on the availability of features.

### 2.0-liter direct injection turbocharged engine

This newly-developed engine delivers a sophisticated fusion of exhilarating driving performance and excellent fuel efficiency. The compact high-efficiency twin scroll turbocharger is combined with an Atkinson Cycle engine with Dual VVT-i (Intake side: VVT-iW). To realize optimum combustion, the innovative D-4ST features both direct and port injectors. This advanced Lexus engineering helps generate high torque from low through to high rpm ranges, high level responsiveness, as well as enhancing fuel economy.\*<sup>1</sup>



### 6 Super ECT

The newly-developed, super intelligent 6-speed automatic transmission features advanced drive-force-on-demand control logic that calculates the required engine torque to realize a high level of vehicle control in line with accelerator operation, together with a sophisticated acceleration feeling. Multi-mode Automatic Transmission and G AI-SHIFT control further contribute to driving pleasure.\*<sup>2</sup>

### Dynamic Torque Control AWD

The electronically-controlled system continually varies distribution of drive power to the rear wheels, switching from front-wheel drive to AWD to realize handling stability to suit the driving conditions, together with excellent fuel economy.\*<sup>3</sup>



### Hybrid system

For dynamic driving and exceptional environmental performance, Lexus Hybrid Drive intelligently combines the power of a highly-efficient 2.5-liter gasoline engine with electric power from a high-output motor.



### 2.5-liter 4-cylinder engine

The compact and lightweight Atkinson Cycle engine with VVT-i delivers high performance together with excellent fuel efficiency, quiet operation and significantly reduced emissions.\*<sup>1</sup>



### E-Four (Electric four-wheel drive)

E-Four uses a rear motor that operates independently from the front motor to optimize distribution of front and rear drive force, delivering excellent vehicle stability in a wide range of driving situations.



\*<sup>1</sup> VVT-i: Variable Valve Timing-intelligent. VVT-iW: Variable Valve Timing-intelligent Wide. D-4ST: Direct injection 4 stroke gasoline engine Superior version with Turbo.  
\*<sup>2</sup> ECT: Electronic Controlled Transmission. AI: Artificial Intelligence. \*<sup>3</sup> AWD: All Wheel Drive.

**FEATURES**



The NX enhances your quality of life with its confident blend of assertive beauty, intuitive function, and refined operation.





The 3-eye Bi-Beam LED headlamps that symbolize sharp sporty performance, together with wide L-shaped LED rear combination lamps that seem to stand out from the back door, express an individuality that can't be hidden, even from a distance. In the cockpit, switches are laid out for easy operation to enable the driver to focus on driving.

The spacious interior is designed for relaxation in all seats, enveloping the driver and passengers in comfort. An exhilarating driving experience awaits as soon as you've loaded your bags into a roomy luggage space that accommodates various uses.



**3-eye Bi-Beam LED headlamps**

The ultra-small 3-eye Bi-Beam LED headlamps combine advanced design with excellent light distribution. LEDs in the sequential turn signal lamps illuminate sequentially in a flow from the inner side to the outside of the vehicle.

**LED rear combination lamps**

The distinctive Lexus L-shaped lamps look like a brilliant crystal, even in daytime. The wide LED sequential turn signal lamps illuminate from the inner to the outer side of the lamp to intuitively convey the turn direction.



**Door mirrors**

Combining form with function, the sculptured door mirrors embody the strength and luxury of the exterior design, reduce wind noise through excellent aerodynamics, and provide an excellent field of view.



**Panaromic glassroof**

The low profile glass expands the feeling of space in the cabin. It opens and closes, at the touch of a button.

**Hands-free power back door**

Even if both hands are full, when carrying the Electronic Key you can open and close the back door automatically by moving your foot under the rear bumper.





**Multimedia coordination function**

This function coordinates the display of information from the multimedia systems on the 10.3-inch EMV (Electro Multi-Vision) display in the center of the instrument panel and the 4.2-inch color TFT (Thin Film Transistor) multi-information display in the meter cluster. For convenience, audio system information, incoming mobile calls, and some navigation on the EMV display can also be displayed on the multi-information display, and controlled using switches on the steering wheel.

**Meters**

The 4-dial meter combines a three-dimensional analog speedometer and tachometer with a digital multi-information display that changes between blue and red illumination to highlight the drive mode selected.

**Remote Touch Interface**

Simple touchpad operation lets users interact intuitively with the navigation and audio systems on the 10.3-inch EMV display, providing easy control of the systems.



**Wireless charger**

This thoughtful charging tray in the center console box enables wireless charging of batteries in Qi-compatible smartphones and electronic devices simply by placing them on the charger tray.



**Luggage space**

Contrasting the athletic individuality of the stylish exterior, the ample capacity of the luggage space highlights the practical convenience of the packaging and smart design of the cabin. The back door opens wide to provide easy access to a flexible space that can accommodate three full-set golf bags, or different sizes and combinations of suitcases, while accommodating passengers in the rear seats.



**Power folding rear seats**

Enhancing versatility and convenience, the rear seats can be reclined at the touch of a button integrated into each rear seat. They can also be folded flat or upright using switches in the rear seats, luggage space and the driver's-side instrument panel.



**Power back door**

Convenient controls for the power door are set in the instrument panel and Electronic Key, as well as a closing switch in the bottom of the door. A memory function lets users set the opening clearance.



**Panoramic view monitor**

To help check the surroundings, the system shows a bird's-eye view of the vehicle on the EMV display, using a composite image taken by cameras mounted on the front, sides, and rear of the vehicle. In addition, a see-through view provides an image as seen through the body, and enables a specific point to be selected and enlarged for a more careful check. \*2

Available on Luxury grade only.

**USB ports/mini-jack/power outlets**

Two USB ports and a mini-jack support plug-and-play use of music players. Conveniently positioned power outlets in the center console box and luggage space enable the charging of various devices and portable gear.



**Cupholders**

The cupholders for the front seats can hold two drink bottles or a handled mug. The grip of the cupholder mats makes it easier to open a bottle lid with one hand.



**Sunglasses holder**

The sunglasses holder is conveniently located under the palm rest. The removable magnetic lid stores away in the center console box. A flocked surface inside the holder protects sunglasses against scratching.





**SAFETY**



Anticipating the unexpected, the NX cocoons occupants with advanced active and passive safety measures.

5



## LEXUS SAFETY SYSTEM +

### Pre-Collision System

When the millimeter-wave radar and monocular camera sensors detect a collision with a vehicle or pedestrian\*<sup>1</sup> ahead is likely, it alerts the driver and activates pre-collision brake assist when the driver depresses the brake pedal. If the driver cannot depress the brake pedal, it activates the pre-collision brakes.



### LDA (Lane Departure Alert) with Steering Control

LDA with Steering Control alerts the driver with a buzzer and on the multi-information display if the system judges the vehicle is about to cross the lane markings without using the turn signals, and assists steering to avoid lane departure.

### AHB (Automatic High Beam System)

AHB helps safe driving at night by instantly switching from high to low beam when the lights of an oncoming vehicle, or the tail lights of a vehicle in front, are detected.



### Dynamic Radar Cruise Control

In addition to maintaining a constant speed, Dynamic Radar Cruise Control uses the millimeter-wave radar to detect a vehicle driving ahead and maintain an appropriate distance between vehicles.



### Blind Spot Monitor System

When the quasi-millimeter-wave radars in the rear bumper detect vehicles in adjacent lanes that aren't visible in the door mirrors, the system activates a warning indicator in the relevant door mirror the moment a vehicle enters this blind spot.



### RCTA (Rear Cross Traffic Alert)

To assist safe reversing, RCTA uses quasi-millimeter-wave radars in the rear bumper to detect approaching vehicles in difficult-to-see areas behind the vehicle. When an approaching vehicle is detected, RCTA alerts the driver using a buzzer and indicator in the relevant door mirror.

### Wide-angle cornering lamps

Wide-angle cornering lamps provide additional illumination in the direction of travel, to the side and above, enhancing pedestrian visibility when turning at intersections.



### SRS airbags

The NX features dual-stage SRS airbags (Front seats), SRS knee airbag (Driver's seat), SRS cushion airbag (Front passenger's seat) that supports seatbelt restraint by lifting the front edge of the seat cushion during a frontal collision, SRS side airbags (Front seats), and SRS curtain shield airbags (Front and rear door windows).<sup>\*2</sup>



<sup>\*1</sup> Pedestrian detection is not available in some markets. Please inquire at your local dealer for details.

<sup>\*2</sup> The SRS (Supplemental Restraint System) airbags are supplemental devices to be used with the seatbelts. The driver and all passengers in the vehicle must wear their seatbelts properly at all times. Never install a rear-facing CRS (Child Restraint System) on the front passenger's seat. For a forward-facing CRS, it is recommended you use it in the rear seats. Please do not use accessories for the seats which cover the parts where the SRS side airbags should inflate. Such accessories may prevent the SRS side airbags from activating correctly, causing serious injury (Lexus genuine seat covers are specifically designed for models equipped with the SRS side airbags. To find out about availability in your area, please inquire at your local dealer). The photo shows all the SRS airbags activated for display purposes only (the SRS side and curtain shield airbags only inflate on the side of the collision in an actual accident). For details on these and other important safety features, be sure to read the Owner's Manual carefully.

Note: The system may not operate properly depending on the weather, road and vehicle conditions or other factors. Be sure to read the Owner's Manual carefully. Vehicles pictured and specifications detailed in this catalog may vary from models and equipment available in your area. Please inquire at your local dealer for details on the availability of features.

**F SPORT**



F SPORT evolves the Lexus sport DNA that finds its ultimate expression in the LFA supercar, to enable more drivers to experience its exhilarating performance and unique personality. It further refines the agile, powerful performance of the NX to create a feeling of oneness with the car that comes from its immediate response to the driver's intentions in various driving situations.





A\_Front mesh grille / B\_Front bumper



**Performance dampers**

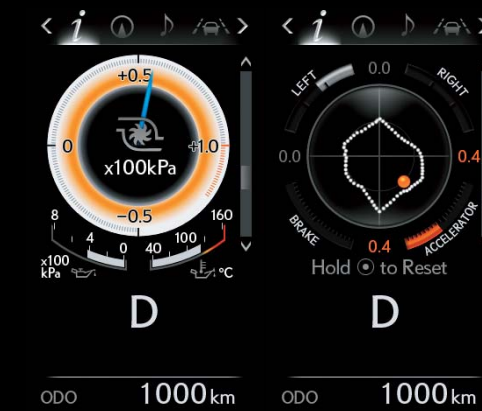
Performance dampers integrated into the front and rear of the NX F SPORT enhance rigidity and vibration damping performance, realizing exceptional handling stability that is at the heart of sports driving enjoyment.



C\_Aluminum wheels / D\_Door mirrors / E\_Front fender emblems / F\_Rear bumper



G\_Meters & multi-information display / H\_Steering wheel / I\_Aluminum pedals / J\_Shift lever knob / K\_Trim / L\_Scuff plates



ODO 1000 km ODO 1000 km

**F SPORT multi-information display**

The multi-information display heightens your driving experience by displaying a G sensor with steering angle, accelerator opening and brake hydraulic pressure bars, and a turbo boost meter with oil temperature and pressure gauges.



**F SPORT meters**

Expressing dynamic sports performance, the exclusive analog meters feature full-length illuminated needles, silver needle rings, and distinctive white scales that evolved from the Lexus LFA supercar.



**F SPORT front seats**

The front sports seats blend refined comfort with firm support and excellent holding performance for sports driving. An innovative 'integrated foaming' manufacturing process eliminates wrinkles and movement of the upholstery.

Note: Vehicles pictured and specifications detailed in this catalog may vary from models and equipment available in your area. Please inquire at your local dealer for details on the availability of features.

EXTERIOR & INTERIOR  
COLORS

*A palette of colors, from the bold and luminous  
to nuanced and sophisticated,  
lets you express your individuality.*



White Nova Glass Flake <083>\*



Sonic Quartz <085>



Mercury Gray Mica <1H9>



Platinum Silver Metallic <1J4>



Sonic Titanium <1J7>



Black <212>



Graphite Black Glass Flake <223>



Red Mica Crystal Shine <3R1>



Lava Orange Crystal Shine <4W7>\*



Amber Crystal Shine <4X2>^



Heat Blue Contrast Layering <8X1>\*



Sparkling Meteor Metallic <8X9>



18-inch aluminum wheels  
(Executive Package)



18-inch aluminum wheels  
(Luxury Package)



18-inch aluminum wheels  
(F SPORT package)

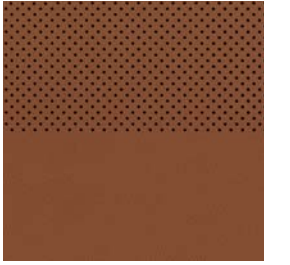
\* Available on F SPORT package only. ^ Not available on F SPORT package.

Note: Vehicles pictured and specifications detailed in this catalog may vary from models and equipment available in your area. Please inquire at your local dealer for details on the availability of features.

NX 300 & NX 300h EXECUTIVE PACKAGE <LEXUS NULUXE>



White Ochre

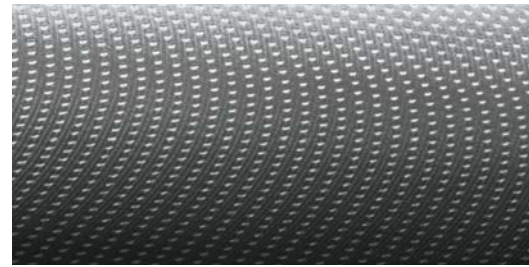


Ochre



Black

<TRIM>



Silver Film



Dark Rose

<COLOUR COMBINATIONS>

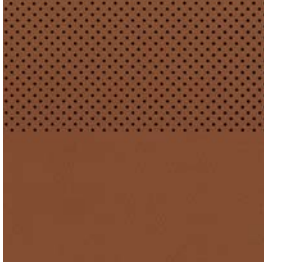
		WHITE OCHRE (SILVER FILM)	BLACK (SILVER FILM)	DARK ROSE (SILVER FILM)	OCHRE (SILVER FILM)
		08	22	32	42
085	SONIC QUARTZ	•	•	•	•
1H9	MERCURY GREY MC.	•	•	•	•
1J4	PLATINUM SILVER ME.	•	•	•	•
1J7	SONIC TITANIUM	•	•	•	•
212	BLACK	•	•	•	•
223	GRAPHITE BLACK GF.	•	•	•	•
3R1	RED MICA. CS.	•	•	•	•
4X2	AMBER C.S	•	•	•	•
8X9	SPARKLING METEOR M.E.	•	•	•	•

Note: Vehicles pictured and specifications detailed in this catalog may vary from models and equipment available in your area. Please inquire at your local dealer for details on the availability of features.

NX 300 & NX 300h LUXURY PACKAGE <SMOOTH LEATHER>



White Ochre

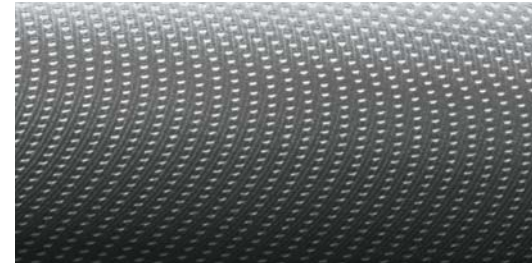


Ochre



Black

<TRIM>



Silver Film



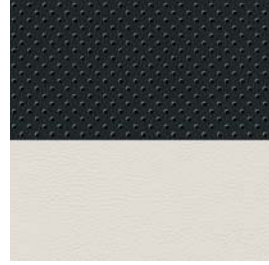
Dark Rose

<COLOUR COMBINATIONS>

		WHITE OCHRE (SILVER FILM)	BLACK (SILVER FILM)	DARK ROSE (SILVER FILM)	OCHRE (SILVER FILM)
		08	22	32	42
085	SONIC QUARTZ	•	•	•	•
1H9	MERCURY GREY MC.	•	•	•	•
1J4	PLATINUM SILVER ME.	•	•	•	•
1J7	SONIC TITANIUM	•	•	•	•
212	BLACK	•	•	•	•
223	GRAPHITE BLACK GF.	•	•	•	•
3R1	RED MICA. CS.	•	•	•	•
4X2	AMBER C.S	•	•	•	•
8X9	SPARKLING METEOR M.E.	•	•	•	•

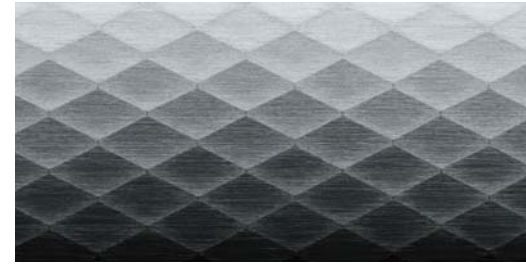
Note: Vehicles pictured and specifications detailed in this catalog may vary from models and equipment available in your area. Please inquire at your local dealer for details on the availability of features.

NX 300 F SPORT PACKAGE <SMOOTH LEATHER>



White

<TRIM>



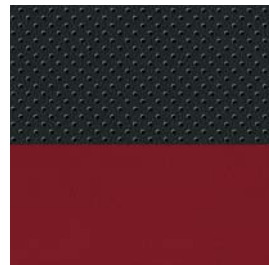
Naguri-Style Aluminium

<COLOUR COMBINATIONS>



Black

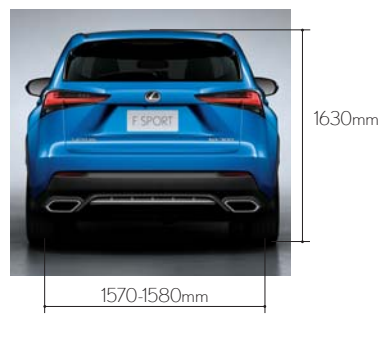
		WHITE (NAGURI-STYLE ALUMINIUM)	BLACK (NAGURI-STYLE ALUMINIUM)	FLARE RED (NAGURI-STYLE ALUMINIUM)
		06	27	37
083	WHITE NOVA G.F.	•	•	•
085	SONIC QUARTZ	•	•	•
1H9	MERCURY GREY MC.	•	•	•
1J4	PLATINUM SILVER ME.	•	•	•
1J7	SONIC TITANIUM	•	•	•
212	BLACK	•	•	•
223	GRAPHITE BLACK GF.	•	•	•
3R1	RED MICA CS.	•	•	•
4W7	LAVA ORANGE CS.	•	•	•
8X1	HEAT BLUE CL.	•	•	•
8X9	SPARKLING METEOR M.E.	•	•	•



Flare Red

## SPECIFICATIONS

	NX 300			NX 300H	
	EXECUTIVE	LUXURY	F SPORT	EXECUTIVE	LUXURY
<b>ENGINE</b>	In-line 4, 16-Valve DOHC, Twin-scroll Turbocharged and Intercooler with Dual VVT-iW & D-4ST			In-line 4, 16-Valve DOHC with VVT-i	
Type	All-Wheel Drive			All-Wheel Drive	
Drive	6-speed Automatic Transmission			CVT	
Transmission Type	86.0 x 86.0 mm			90.0 x 98.0 mm	
Bore x Stroke	1998 cc			2494 cc	
Displacement	100			12.5	
Compression Ratio	175 kW (234 bhp)/ 4800 - 5600 rpm			147kW (196 bhp)/ 5700 rpm	
Max. Output (Combined)	350 Nm / 1650 - 4000 rpm			210 Nm / 4200 - 4400 rpm	
Max. Torque	200 km/h			180 km/h	
Max. Speed	7.1 sec			9.2 sec	
Acceleration (0-100 km/h)	79 L / 100km [12.7km /L]			5.7 L / 100 km [17.5km /L]	
Fuel Consumption	184g /km			133 g /km	
Carbon Emissions	C2			B	
VES Banding					
<b>NX 300H MOTOR AND BATTERY</b>					
Motor Type Permanent	Permanent Magnet Synchronous Motor				
Max. Output (Front)	105 kW				
Max. Output (Rear)	50 kW				
Max. Torque (Front)	270 Nm				
Max. Torque (Rear)	139 Nm				
Battery Type	NiMH				
Number of Battery Cells	204				
<b>CHASSIS</b>					
Brake (Front)	Ventilated Disc Brake			Ventilated Disc Brake	
Brake (Rear)	Disc Brake			Disc Brake	
Suspension (Front)	MacPherson Strut	MacPherson Strut (AVS)		MacPherson Strut	
Suspension (Rear)	Trailing Arm Double Wishbone		Trailing Arm Double Wishbone (AVS)		
Steering System	Electric Power Steering			Electric Power Steering	
<b>MEASUREMENTS</b>					
Length	4640 mm			4640 mm	
Width (with mirrors)	2130 mm			2130 mm	
Width (without mirrors)	1845 mm			1845 mm	
Height	1630 mm			1630 mm	
Wheelbase	2660 mm			2660 mm	
Tread (Front)	1580 mm			1570 mm	
Tread (Rear)	1580 mm			1570 mm	
Min. Turning Radius (Tyre)	5.7 m			5.7 m	
Kerb Weight	1755 - 1860 kg			1800 - 1895 kg	
Gross Vehicle Weight	2350 kg			2385 kg	
Boot Capacity	500 L			475 L	
Fuel Tank Capacity	60 L			56 L	



All specifications, information and features are accurate at the time of printing and are subject to change without notice.

## FEATURES

	NX 300			NX 300H	
	EXECUTIVE	LUXURY	F SPORT	EXECUTIVE	LUXURY
<b>ULTIMATE COMFORT</b>					
Electrically Adjustable Steering Wheel	•	With Memory	With Memory	•	With Memory
Auto Retractable Wing Mirrors	•	With Memory	With Memory	•	With Memory
Electrochromic (EC) Inside Rear View Mirror	•	•	•	•	•
Ventilated Front Seats (Heater + Cooler)	—	•	•	—	•
Seat Lumbar Support	—	D	D	—	D
Original Factory Fitted Seats	NuLuxe Leather	Smooth Leather	F SPORT Smooth Leather	NuLuxe Leather	Smooth Leather
8-Way Power Adjustable Front Seats	•	•	•	•	•
Memory Seats	—	D	D	—	D
Panoramic Glassroof	—	•	—	—	•
Dual-Zone Independent Climate Control	•	•	•	•	•
Power Tailgate + Kick Boot	•	•	•	•	•
Active Sound Control	•	•	•	•	•
Paddle Shifters	•	•	•	•	•
<b>INTUITIVE TECHNOLOGY</b>					
SMART Keyless Go	•	•	•	•	•
Start / Stop Technology	•	•	•	—	—
LED Daytime Running Lamps	•	•	•	•	•
Bi-LED Headlamps with Sequential Indicators	•	—	—	•	—
Bi-LED Triple 'L' Headlamps with Sequential Indicators	—	•	•	—	•
Headlamp Cleaner	•	•	•	•	•
Adaptive Variable Suspension (AVS)	—	—	•	—	—
Cruise Control	•	•	•	•	•
60/40 Power Folding Rear Seats	—	•	—	—	•
Lexus Remote Touchpad Interface	•	•	•	•	•
Wireless Device Charger	•	•	•	•	•
Auto Rain Sensor	•	•	•	•	•
Drive Mode Select Switch (Eco/Normal/Sport)	3	3	5 (Sport S+ / Customise)	4 (EV)	4 (EV)
Lexus Integrated Navigation System with 10.3" Display Screen	•	•	•	•	•
Door Handles with LED Illumination and Hidden Keyhole	•	•	•	•	•
<b>AUDIO &amp; ENTERTAINMENT</b>					
USB / iPod Playback Function / AUX	•	•	•	•	•
AM/FM & DVD Player	•	•	•	•	•
Phone Bluetooth	•	•	•	•	•
Lexus Premium Audio System with 10 Speakers	•	•	•	•	•
<b>360° PROTECTION</b>					
8 SRS Airbags	•	•	•	•	•
Lexus Safety System+ (DRCC, PCS, LDA)	With AHB	With AHS	With AHS	With AHB	With AHS
Blind Spot Monitor (BSM) + Rear Cross Traffic Alert (RCTA)	—	•	•	—	•
Electronic Park Brake (EPB)	•	•	•	•	•
Brake Control System (ABS + VSC + TCS + EDB)	•	•	•	•	•
Hill Start Assist	•	•	•	•	•
360° Panoramic View Monitor	—	•	—	—	•
Rear View Camera with Back Guide Monitor	•	—	•	•	—
Lexus Parking Assist System with 8 Sensors	•	•	•	•	•
LED Front Fog Lamps + Cornering Lamps	•	•	•	•	•
<b>RIMS &amp; TYRES</b>					
Bridgestone 225 / 60 / R18 Aluminium Wheels (5 Twin-Spoke)	•	—	—	•	—
Bridgestone 225 / 60 / R18 Aluminium Wheels (Two-toned 5 Twin-Spoke)	—	•	—	—	•
Bridgestone 235 / 55 / R18 Aluminium Wheels (Dark Finish 5 Twin-Spoke)	—	—	•	—	—
Spare Tyre	•	•	•	•	•

Note: Vehicles illustrated, specifications and equipment detailed in this specification sheet may vary. Lexus reserves the right to alter any details of specifications and equipment without notice. Please consult your Lexus sales consultant for details.



**BORNEO MOTORS (SINGAPORE) PTE LTD** | 33 LENG KEE ROAD SINGAPORE 159102 TEL: 66-31-1388 EMAIL: CR@INCHCAPE.COM.SG

**LEXUS BOUTIQUE** | MON-FRI: 9AM TO 6PM SAT: 9AM TO 7PM SUNDAY & PUBLIC HOLIDAYS: 10AM TO 6PM

**LEXUS SERVICE CENTRE** | MON-FRI: 8AM TO 5PM SAT: 8AM TO 12PM CLOSED ON SUNDAY & PUBLIC HOLIDAYS

**[WWW.LEXUS.COM.SG](http://WWW.LEXUS.COM.SG)**