



# RX

RX 300 / RX 350 / RX 350L / RX 450h





RX	» P4
YOUR WORLD, ELEVATED	» P25
DESIGN	» P29
FEATURES	» P33
PERFORMANCE	» P41
SAFETY	» P46
F SPORT	» P50
TAKUMI	» P54
ENVIRONMENT	» P58
COLOURS	» P60
SPECIFICATIONS	» P68
FEATURES	» P69

*"We believe this new RX will not only delight and satisfy the high expectations of our loyal customers, but will also surprise new customers who are looking for a luxurious daily commute."*

*- Takayuki Katsuda, RX Chief Engineer*



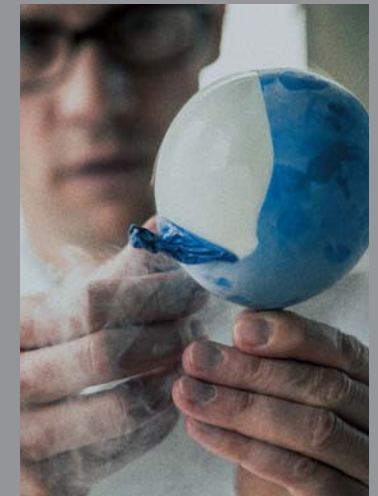


*Your life is a pursuit of new experiences, new flavours, and new things to treasure. It's your journey. Your story. And only you can make it different from the rest. You need a car as unique as you. A car that's luxurious yet brings forward a new passion for life. The new Lexus RX.*





*You inhale life, with all its colours and flavours. You exhale with relief, because you know there's so much more of it to find. Your journey goes on, driven forward by a masterpiece of craftsmanship. A luxurious car, unlike any other.*





FSPORT



*Individuality is priceless, because it's rare. But you are the driver. You choose where you live. You choose how you live. And you choose what you drive. When others take the expected roads in life, you choose your own.*



*The ride is exciting. Exhilarating. You're in your RX, and you can't wait for what comes next. The power of the RX fuels your curiosity, and makes it a pleasure to discover the world.*









*Each thing you love tells more about who you are. Your love of life. Your appreciation of unique experiences. Your journey continues, as you write your story. And you can make it unlike any other, with the new generation of luxury - The Lexus RX.*





LEXUS

# RX



1	<b>RX CONCEPT</b>	» P25
2	<b>DESIGN</b>	» P29
3	<b>FEATURES</b>	» P33
4	<b>PERFORMANCE</b>	» P41
5	<b>SAFETY</b>	» P46
6	<b>RX FSPORT</b>	» P50



# YOUR WORLD, ELEVATED



-----

## RX CONCEPT

*With the desire to challenge status quo,  
the RX exceeds itself while still maintaining  
its Lexus DNA of a luxury SUV.*

-----

Welcome to the new RX. A bold, exciting and sophisticated transformation of what a luxury SUV should be in today's world, in your world.

For everything that you're passionate about, the Lexus RX takes you further. Every

experience is intensified because of it. It's awe-inspiring design, plush handcrafted interiors, and an array of advanced technologies, all make for an exhilarating drive that will captivate each of your senses.

It's the way you're already living; elevated.





# RADICAL AND DISTINCTIVE STYLING



## DESIGN

*'Seductive Strength' expresses an active and energetic attitude, fusing a powerful presence with a radical outlook.*

The new RX looks like no other SUV, because it's been designed like no other SUV.

We enveloped the spaciousness of what an SUV should offer with panache. And our design concept of 'seductive strength' can be seen right from the signature spindle grille and large aluminium wheels, to the sleek & sharp cabin silhouette.

With its bold chiseled exterior, striking and luxurious cabin space it isn't just a 4th generation RX, it's a completely new generation of Lexus luxury.

A mere glance will take your breath away. A drive will capture your heart. While your mind will be too busy trying to control the excitement that has never been felt before in an SUV.

**EXTERIOR**

*The bold yet sleek proportions fuse strength with seductiveness, creating a strong visual statement at first glance.*



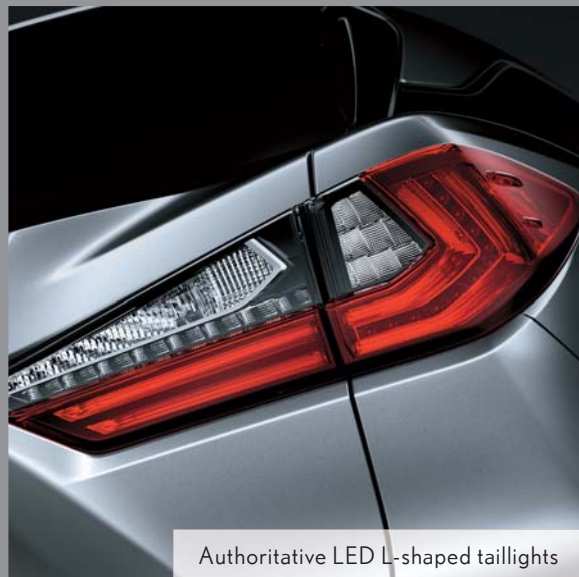
Aggressive front bumper with all-new LED fog lamps



Sharp character lines run from the front fenders to the rear end



Iconic "floating" roof



Authoritative LED L-shaped taillights

**INTERIOR**

*The new luxurious cabin with elegant, high-quality trim exudes warmth and class.*



Craftsmanship in every detail



Intuitive design for easy use with luxurious elements



Classic LED analogue clock



Yamaha laser-cut wood ornamentation exclusive to Lexus



# BESPOKE AND OPULENT FUNCTIONALITY



## FEATURES

*The RX anticipates the future with refined features that blend advanced technology and indecisive design with Lexus quality.*

Craftsmanship has always been the hallmark of the Lexus family. With the new RX, we gave it a bit more of an edge.

We let imagination and ingenuity take shape through metal and glass. Distinctly visible by the sharp and distinctive LED headlamps and the signature Lexus arrowhead shaped Daytime Running Lamps.

A large rear spoiler accentuates the flowing design, and further enhances aerodynamics for sporty driving. And our back door responds to

the presence of your palm, opening up even without being touched.

The sophisticated cabin with thoughtful and refined features cocoons you in an island of calm, and with the dazzling array of advanced technologies available at your fingertips, you will easily be able to hear your heart beat.

With many more impressive features, the new RX isn't luxury you've known, but that elevates you in every sense.



**01 / Bi-LED Triple 'L' headlamps**

The futuristic design of the distinctive 3-eye, energy-efficient L-shaped LED lamps with integrated LED Daytime Running Lamp (DRL) creates a signature Lexus arrowhead-shaped illumination. The advanced LED turn signal lamps illuminate sequentially from the inner side to the outside of the headlamps.

Available on Luxury, Premium and F SPORT grades.

**03 / LED front fog lamps**

LED lamps are integrated into the front bumper to reduce power consumption while providing a bright beam, which contributes to excellent visibility for safe driving in low light and at night.

**02 / Bi-LED headlamps**

The single Bi-LED headlamps switch between low and high beam to generate a bright light for excellent visibility at night, while reducing power consumption. Plus, the arrowhead-shaped LED DRL makes this an unmistakable Lexus. Available on Executive grade only.

**04 / LED rear combination lamps**

The LED sequential turn signal lamps illuminate from the inner to the outer side of the lamp to intuitively convey the turn direction. The distinctive L-shaped lamps wrap around the side in deep-set curves, creating a wide signal that projects a strong on-road presence.



**05 / Power tailgate with emblem sensor**

The power back door automatically opens when a hand is held above the sensor in the Lexus emblem, enabling convenient hands-free opening when your hands are full or the door is wet or dirty.

**07 / LED Illuminated Door handles**

The refined door handle design welcomes you with warm hospitality and the dynamic shape is easy to grip. A brightened silhouette line and integrated foot area illumination on the handles guide you at night, then gently fade.

**06 / Rear spoiler**

The large rear spoiler integrated into the top of the back door accentuates the flowing design and edgy sporty styling of the RX. It is angled to enhance aerodynamic performance and balance airflow to provide excellent front tire hold.

**08 / Panoramic glassroof**

The glassroof enhances the feeling of openness and space in the cabin. It opens and closes, and tilts up and down, at the touch of a switch in the overhead console.

Available on Luxury grade only.



**01 / Multimedia coordination function**

This function coordinates the display of information from the multimedia systems on the 12.3-inch Electro Multi-Vision (EMV) display in the center of the instrument panel and the 4.2-inch color Thin Film Transistor (TFT) multi-information display in the meter cluster. For convenience, audio system information, incoming mobile calls and some navigation on the EMV display can also be displayed on the multi-information display, and controlled using switches on the steering wheel.

**02 / Full Color head-up display**

The wide colour head-up display projects a range of driving information and warnings on the lower windshield glass in the driver's line of sight, requiring only a small movement of the eyes to see it.



**03 / Meters**

Subtle touches of luxury are embedded within the design of the meters, thanks to a fusion of the 4-dial analogue meter and a hi-tech digital display. Additionally, the large analogue speedometer and tachometer have three-dimensional meter faces for greater visibility.

**04 / Remote Touch Interface**

A Lexus innovation ergonomically built to give you command of the vehicle's electronics such as navigation and audio systems, displayed through a 12.3-inch EMV screen - all in the palm of your hands.

**05 / Touch Capacitive light switches**

Lexus' renowned hospitality extends into the intuitive operation of the front LED dome and map lamps located in the overhead console, activated when you gently run your fingers across the lights.

**06 / Lexus Premium Audio System**

Lexus Premium Surround Sound Systems are tuned for perfection to provide the highest level of accuracy, reliability, and enjoyment. The hallmark of each system is an uncanny ability to reproduce subtleties and nuances so that you get pure musical reproduction. With this, you don't just hear sound; you experience the soul of the music in a 360-degree spatial environment.



**01 / Luggage space**  
The Lexus RX is not all form without function. It has class-leading capacity to carry five people and their luggage. The power back door opens wide to provide easy access to big suitcases and can fit four full-set golf bags with room to spare.



**02 / Power tailgate**  
Controls for the power tailgate are conveniently set in the instrument panel and Electronic Key. Pressing twice on the additional closing switch located in the bottom of the back door closes and locks the door automatically, plus a memory function that allows users to set the opening clearance.

**03 / Power folding rear seats**  
Power folding rear seats can be reclined, folded flat or kept upright using switches conveniently located at the rear of each seat. This delivers greater visibility to the driver and additional luggage space. Available on Luxury grade only.



**04 / Wireless charger**  
This thoughtful charging tray in the center console box enables wireless charging of batteries in Qi-compatible smartphones and electronic devices simply by placing them on the charger tray.

**07 / USB ports/mini-jack/power outlets**  
Two USB ports, a mini-jack and power outlet in the centre console box allow for plug-and-play use of electronic devices. Additional power outlets are conveniently located in the centre cluster for the front seat passenger, in the back of the centre console box and in the side of the luggage space for rear seat passengers.



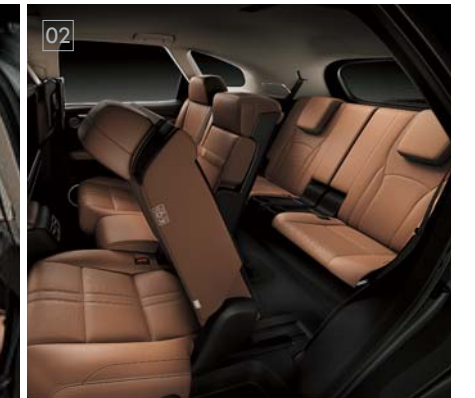
**05 / Adjustable Cupholder**  
Incorporated into the centre console is the world's first cup holder with a vertical sliding height mechanism that can be adjusted according to your coffee cups or drinking bottles of various heights.

**08 / Laser-cut wood ornament**  
Available on Luxury grade only. Featuring a Lexus' first, the laser-cut wood ornamentation is crafted by using the latest laser-cutting technology. It engraves a design on the delicate surface of the wood exposing the aluminium underneath, creating beautiful metallic line that can only be performed by skilled Takumis.



**06 / Center console box**  
When designing of the centre console box, we put attention to every detail. Hidden LED lights activate when you open the lid to aid visibility in the dark. The angled interior features ample room for storage plus an integrated port and power outlet for added utility.

**09 / Rear door window sunshades**  
Manual sunshades on the rear door windows give rear seat passengers convenient control over heat and light. The gaps between the shades and window trim were minimised to help ensure that no sunlight comes directly into the rear seats. Available on Luxury and F SPORT grades only.



The RX350L changes to suit your needs, whether you require comfortable third row seats for extra passengers or a spacious luggage compartment. Theater-style seating provides a slightly higher eye point in each successive row so that all occupants enjoy excellent visibility and a satisfying open feeling.

**01 / Luggage space**

The RX350L provides a flat, gap-free luggage space, regardless of whether the third row seats are in use or stowed. The tonneau cover stores under the luggage space floor to provide ample room for luggage even when carrying seven people. Both the second row and third row seats have a split seatback design to enable different luggage configurations. The power folding third row seats are controlled by switches in the passenger side trim of the second row seats and in the left side of the luggage space.\*

**02 / Walk-in mode**

Touch the walk-in lever on the side of the second row seats to slide them forward. The seats can also be folded flat for easy access to the third row seats. The flat floor enables comfortable access.

**03 / Third row seat air conditioner**

The left and right third row seats have adjustable air conditioner vents in the side panels. In addition, a control panel located beside the left seat allows rear-seat occupants to adjust the temperature, airflow and other settings.

\* Second row seats fold manually.

Vehicle specifications, equipment and features in images may vary.



# PERFORMANCE THAT INSPIRES



## PERFORMANCE

*The RX embraces a passion for sporty performance, fusing exhilarating power with intuitive control to boost your driving pleasure.*

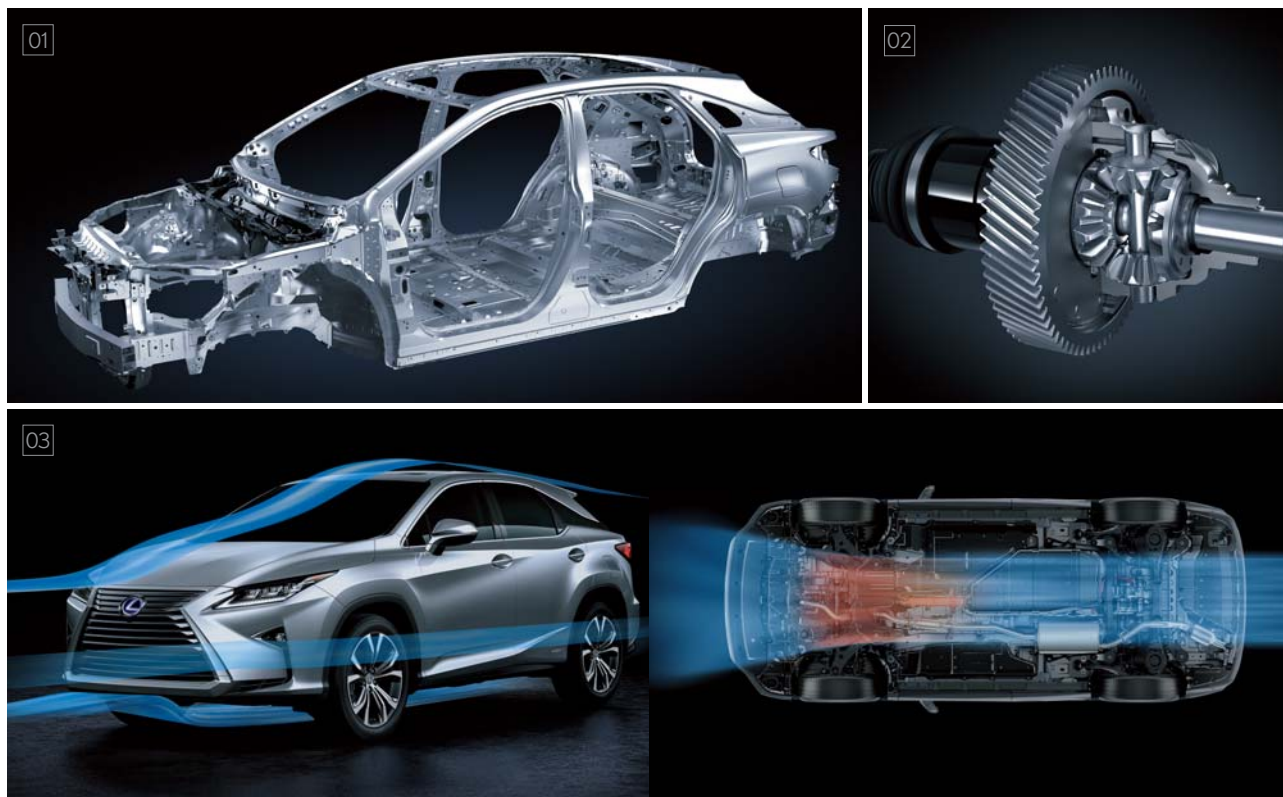
The experience of driving a luxury car should not be a topic of muted and plain conversations. It should be thrilling, powerful and an emotional sensation.

And that's exactly what the new RX offers. Once you are behind the wheel, you become one with the car.

Its extended wheelbase and large wheels create an extremely stable platform. The engine mount

and structure reduce vibration and contribute to excellent handling. Ensuring that you are always in perfect control.

With a sporty engine that roars and responds to your inputs, and drive modes that let you adjust the RX's performance to suit your mood and driving style, it will come as no surprise that every drive will leave you with lots to talk about. And it won't be in hushed tones.



**01 / Chassis**

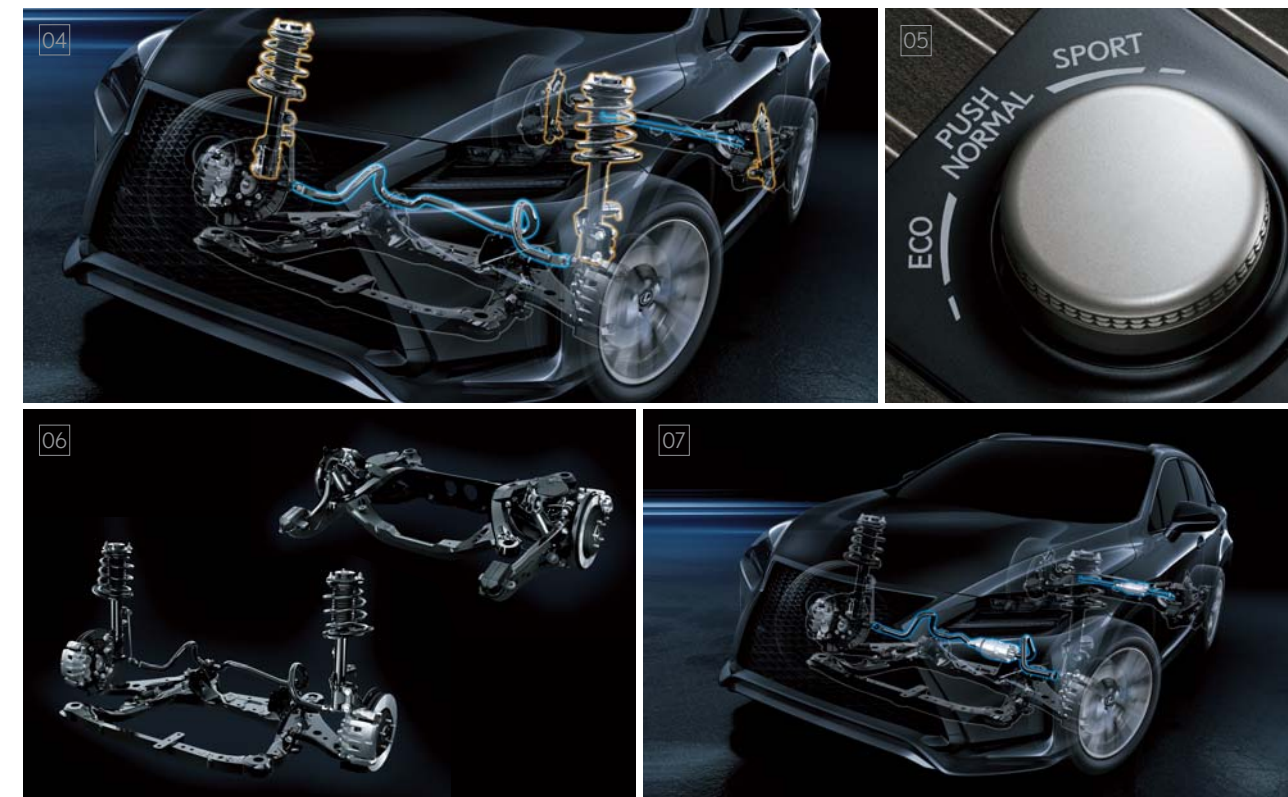
The foundation for the RX's exhilarating performance and responsive, sporty handling is a lightweight, highly rigid body structure. It is made from hot-stamp, high-tensile steel and aluminium, with strategically positioned reinforcements using innovative production technologies such as laser screw welding and body adhesives. An optimised engine mount minimises engine movement for quicker engine inertia response against lateral G-forces around corners - contributing to superior handling. It also isolates engine vibration and enhances the comfort of the luxurious ride.

**02 / Pre-loaded differential**

This innovative differential pre-loads torque under light loads or low rotational speed, contributing to highly precise steering for excellent straight-line stability and acceleration performance.

**03 / Aerodynamics**

Aerodynamics contributes to quiet comfort in the cabin, fuel-efficient performance, and excellent handling stability even during high-speed driving.



**04 / Shock absorbers**

Careful calibration of each shock absorber component optimises damping force to smooth minor road inputs and absorb larger jolts. All this while maintaining a supple feel for agile handling and excellent ride comfort.

**06 / Front and rear suspension**

The MacPherson strut front suspension and trailing-arm double wishbone rear suspension contributes a heightened driving pleasure with excellent stability and steering response.

**05 / Drive mode select**

Drive mode select provides integrated control of multiple systems to let you tune performance to suit your driving style. You can select and change between three modes: Eco, Normal and Sport Modes. Equipped with Adaptive Variable Suspension System (AVS) on the F SPORT grade, an additional Sport S+ mode is available for selection.

**07 / Active Stabiliser System**

The system actively controls the front and rear suspension in various driving conditions, reducing roll to maintain stability while cornering, and enhance ride comfort. The advanced roll skyhook control helps to reduce roll while driving on bumpy roads, further contributing to a smooth ride. Available for all as standard.



**01 / 2.0-litre direct injection turbocharged engine**

The compact high efficiency twin scroll turbocharger is combined with an Atkinson Cycle engine with Dual VVT-iW<sup>\*1</sup>. To realise optimum combustion, the innovative D-4ST<sup>\*2</sup> features both direct and port injectors. This advanced Lexus engineering helps generate high torque from low to high rpm ranges, high level responsiveness, as well as enhanced fuel economy.

**04 / 8 Super Electronic Controlled Transmission (ECT)**

The super intelligent 8-speed automatic transmission features a wide gear ratio, which delivers smooth starting and acceleration performance with excellent fuel economy. This contributes to a dynamic driving performance and demonstrates the RX's versatility with various road conditions. Multi-mode Automatic Transmission and G AI-SHIFT control further enhance the driving pleasure.

**02 / 6 Super Electronic Controlled Transmission (ECT)<sup>\*3</sup>**

The newly-developed, super intelligent 6-speed automatic transmission calculates the required engine torque to deliver sophisticated feeling of acceleration while maintaining vehicle control. Multi-mode Automatic Transmission and G AI-SHIFT<sup>\*4</sup> control further contribute to the car's driving pleasure.

**05 / Dual exhaust pipes**

The dual exhaust pipes help to deliver high power output. The design of the dual diffusers and integration of the baffles into the rear bumper accentuate the expression of sporty power.

**03/ 3.5-liter V6 gasoline engine**

The V6 Atkinson Cycle engine with Dual VVT-iW generates exhilarating driving performance balanced with excellent fuel efficiency. The innovative D-4S<sup>\*5</sup> fuel injection system features both direct and port injectors, to generate excellent output, torque and fuel efficiency, while complying with strict emission standards.

**06/ Dynamic Torque Control All Wheel Drive (AWD)**

The electronically controlled system continually varies the distribution of drive power, switching between front, rear, and AWD to improve handling stability in a range of road and driving conditions.



**07 / Hybrid system**

For dynamic driving with exceptional environmental performance, Lexus Hybrid Drive intelligently combines the power of an efficient 3.5-litre gasoline engine with electric power from a high-output motor.

**09 / Metallic cover**

The metallic cover of the lower rear bumper contributes to excellent aerodynamics, with clean lines that communicate a subtle yet distinctive identity of a hybrid vehicle.

**08 / 3.5-liter V6 hybrid engine**

The 3.5-litre V6 hybrid Atkinson Cycle engine features Dual VVT-iW and advanced D-4S fuel injection system to deliver exciting performance with outstanding drivability, excellent fuel efficiency, and reduced emissions.

**10 / Electric four-wheel drive (E-Four)**

E-Four uses a rear motor that operates independently from the front motor to optimise distribution of front and rear drive force. In addition, it features slip and yaw rate feedback controls for excellent vehicle stability in a wide range of driving conditions.

<sup>\*1</sup> VVT-iW: Variable Valve Timing-intelligent Wide.  
<sup>\*2</sup> D-4ST: Direct injection 4 stroke gasoline engine Superior version with turbo.  
<sup>\*3</sup> ECT: Electronic Controlled Transmission.  
<sup>\*4</sup> AI: Artificial Intelligence.  
<sup>\*5</sup> D-4S: Direct injection 4 stroke gasoline engine Superior version.

# YOUR PEACE OF MIND



## SAFETY

*Enhanced during pleasure, the RX integrates advanced active control technologies to assist safe driving and give you peace of mind.*

With luxury, certain things should come easy, like peace of mind. The new RX, with its integrated approach to safety is sure to put your mind at ease, when you are on the road.

Thin front pillars and careful positioning of the door mirrors offer you excellent visibility. You are further protected by various technologies such as Blind Spot Monitor and LED wide-angle cornering lamps to help assist safe driving.

Rear Cross Traffic Alert (RCTA) and a panoramic view monitor provide additional checks of your surroundings while getting in and out of parking spaces. Helping to keep up the excitement of driving the new RX without any compromises or safety concerns.

It is what modern luxury should accomplish, delivering on both style and substance.





**01 / Blind Spot Monitor System**

Quasi-millimetre-wave radars in the rear bumper detect vehicles in adjacent lanes that aren't visible in the door mirrors. The system will activate a warning indicator on the relevant door mirror the moment a vehicle enters this blind spot.

**02/ Rear Cross Traffic Alert (RCTA)**

To assist safe reversing, RCTA uses quasi-millimetre-wave radars in the rear bumper to detect approaching vehicles in difficult-to-see areas behind the vehicle. When an approaching vehicle is detected, RCTA alerts the driver using a buzzer and an indicator on the relevant door mirror.



**03 / LED wide-angle cornering lamps**

Compact, bright and energy-efficient, the LED wide-angle cornering lamps provide additional illumination in the direction of travel, to the side and above, enhancing pedestrian visibility when turning at intersections. Available on Luxury and F SPORT grades only.

**04 / Panoramic view monitor**

To help check the surroundings, the system shows a bird's-eye view of the vehicle on the EMV display, using a composite image taken by cameras mounted on the front, sides, and rear of the vehicle. In addition, a see-through view provides an image as seen through the body, and enables a specific point to be selected and enlarged for a more careful check. \*2 Available on Luxury grade only.

**05 / SRS airbags**

The RX features dual-stage SRS airbags (Front seats), SRS knee airbag (Driver's seat), SRS cushion airbag (Front passenger's seat) that supports seatbelt restraint by lifting the front edge of the seat cushion during a frontal collision, SRS side airbags (Front and outboard rear seats), and SRS curtain shield airbags (Front and rear door windows). \*3

\*2 The area the cameras can show is limited. Be sure to visually check your surroundings before you proceed.

\*3 The SRS airbags are supplemental devices to be used with the seatbelts. The driver and all passengers in the vehicle must wear their seatbelts properly at all times. Never install a rear-facing CRS (Child Restraint System) on the front passenger's seat. For a forward-facing CRS, it is recommended you use it in the rear seats. Please do not use accessories for the seats which cover the parts where the SRS side airbags should inflate. Such accessories may

prevent the SRS side airbags from activating correctly, causing serious injury (Lexus genuine seat covers are specifically designed for models equipped with the SRS side airbags. To find out about availability in your area, please inquire at your local dealer). The photo shows all the SRS airbags activated for display purposes only (the SRS side and curtain shield airbags only inflate on the side of the collision in an actual accident). For details on these and other important safety features, be sure to read the Owner's Manual carefully.

# SPORTING EXHILARATION



## F SPORT

*The essence of sports driving.  
The F SPORT's aggressive character  
and sports-honed performance  
evolved from Lexus 'F' DNA.*

Never before has an SUV had the pedigree to dominate the road. Introducing the exclusive F SPORT package that injects razor-sharp sports performance into the NX driving experience.

Evolved from the first IS F and groundbreaking LFA supercar, Lexus F DNA drives the development of all F SPORT models. You'll recognise it in the distinctive 20-inch aluminium wheels, the signature grille mesh and the metallic-coated lower bumper that visually lowers the car's centre of gravity. As you take the wheel, the feeling of sports

driving control is compelling and immediate. The extra support of the seat, dimpled leather steering wheel, custom sports meters that evoke the LFA supercar, G sensor and turbo boost meter displays, come together to create an authentic sporty driving experience.

F SPORT exhilaration is also created by fine-tuning the front and rear suspension, fitting of Adaptive Variable Suspension (AVS) system, and installing front and rear performance dampers that heighten responsiveness and handling stability.





- A/ Front Mesh Grille**  
Distinctive honeycomb spindle grille conveys a bold and assertive look.
- B/ Front Bumper**  
Unique bumper visually lowers the point of gravity adding to the sporty image.
- C/ Aluminum Wheels**  
Light and strong forged aluminum wheels with an F SPORT embossed centre cap.
- D/ Door Mirrors**  
Exclusive outer mirrors to further enhance the aggressive F SPORT image.
- E/ Front Fender Emblems**  
Distinctively placed at the sides of the Lexus F SPORT, the iconic F SPORT emblem is a mark of sportiness within the car.



- F/ F SPORT Meters**  
Expresses dynamic sports performance with full length illuminated needle and precision digital speedometer.
- G/ Steering Wheel**  
Perforated leather steering wheel, with an F SPORT logo at its base.
- H/ Aluminum Pedals**  
Drilled aluminum pedals for better grip and responsiveness.
- I/ The Shift Lever Knob**  
Exclusive shift knob with leather dimpled wrapping further accentuates the sporty impression.
- J/ Trim (Metal Film)**  
The thinly machined metal film is finished with a fine 3D-patterned surface, creating a sophisticated visual depth that adds a subtle sporting aura to the interior.
- K/ Scuff Plates**  
The black Lexus logo inscribed in the scuff plates project an aggressive image of sports performance.

F SPORT



- 01 / Adaptive Variable Suspension System (AVS)**  
AVS optimally controls the damping force of the shock absorbers on all four wheels in response to driver input and road surface conditions, contributing to excellent ride comfort and handling.
- 02 / Sound generator**  
Heightening the emotion and excitement of sports driving, the sound generator boosts the sound pressure level in the engine air intake at different resonate frequencies, to generate a thrilling F SPORT engine note when you accelerate.
- 03 / F SPORT front seats**  
The front sports seats are the product of an innovative 'integrated foaming' manufacturing process. They provide a blend of refined comfort with firm support and excellent holding performance for sports driving.
- 04 / F SPORT meters**  
Dynamically displaying sports performance, the exclusive F SPORT analogue tachometer features a large silver ring with an illuminated needle, and a precision digital speedometer and shift position/drive mode select indicators in the center.
- 05 / F SPORT multi-information display**  
The 8-inch color Thin Film Transistor (TFT) multi-information display heightens the immediacy of your F SPORT driving experience by displaying a G sensor with steering angle, and accelerator opening and brake hydraulic pressure bars.



---

LEXUS  
TAKUMI

---

*The Lexus pursuit of perfection finds its finest expression in the master craftsmanship of the Takumi.*

---



Every Lexus is based on an uncompromising approach to creating premium automobiles. Inspired by our 'Yet' philosophy, we seek innovation in every facet of engineering through a sophisticated fusion of seemingly incompatible ideas such as 'high performance yet high fuel efficiency'. In addition, unique Lexus styling is born of our L-finesse design language, a fine balance of 'Leading-edge' and 'finesse', which ensures every Lexus is not only captivating and luxurious, but also highly refined. Finally, every new Lexus model is also measured against a set of internal standards covering design, performance, specifications and equipment, to ensure it is distinctive and worthy of the Lexus emblem.

This pursuit of perfection is evident at every stage of the manufacturing process. Every Lexus vehicle is created with a masterful skill and attention to detail inspired by both traditional artisanship and state-of-the-art engineering. For example, at the Tahara plant in Japan, precision components made using leading-edge digital technology are assembled and finished by master craftsmen called Takumi, whose technical expertise and sure senses are honed by decades of rigorous experience.

**THE MASTER CRAFTSMEN  
WHO MAKE A LEXUS A LEXUS**

There is no higher honour within the engineering ranks of Lexus than a Takumi, or Master Craftsman. Each is hand-selected for performing their craft more skillfully and artfully than the rest. Tasked with training and instilling pride in the thousands of engineers beneath them, this elite group of ten oversees every aspect of development at the Tahara plant. They think in terms of microns. Their margin for error, even less. Though Hirofumi Koga has a specially calibrated machine designed to identify imperfections in the dash, he prefers to use a far more reliable tool: By running his gloved hand over the surface, he can detect less than a millimetre of difference in the uniformity of the foam underneath. And he requires his team members be able to do the same.



**HIROFUMI  
KOGA**

*Master of Plastic Moulding,  
36 years of experience*



**MASANORI  
SUZUKI**

*Master of Vehicle Bodies,  
31 years of experience*



**EIJI  
GOTO**

*Master of Engine Parts,  
37 years of experience*



**YASUNORI  
MIYAMOTO**

*Master of Plastic Painting,  
29 years of experience*



**KATSUHIRO  
YAMAZAKI**

*Master of Vehicle Assembly,  
31 years of experience*



**MITSUKI  
YOSHIMURA**

*Master of Engine Casting,  
35 years of experience*



**ATSUNOBU  
WATANABE**

*Master of Engine Assembly,  
27 years of experience*



**HIDEYA  
SEGAWA**

*Master of Vehicle Inspections,  
35 years of experience*



**YOSHIO  
MATSUI**

*Master of Body Stamping,  
32 years of experience*

Eiji Goto has similarly impossible standards when it comes to scrutinising engine parts. His team members must memorise a list of 250 points to inspect. Sound daunting? That's only for one piece. These are just two of the 26,000 tasks you'll find in a Lexus plant. Each must be precisely demonstrated and described in exacting detail by a craftsman to receive certification. How much detail? Consider this: There's a 14-minute film on how to place a grommet correctly—a task that takes a mere two seconds.



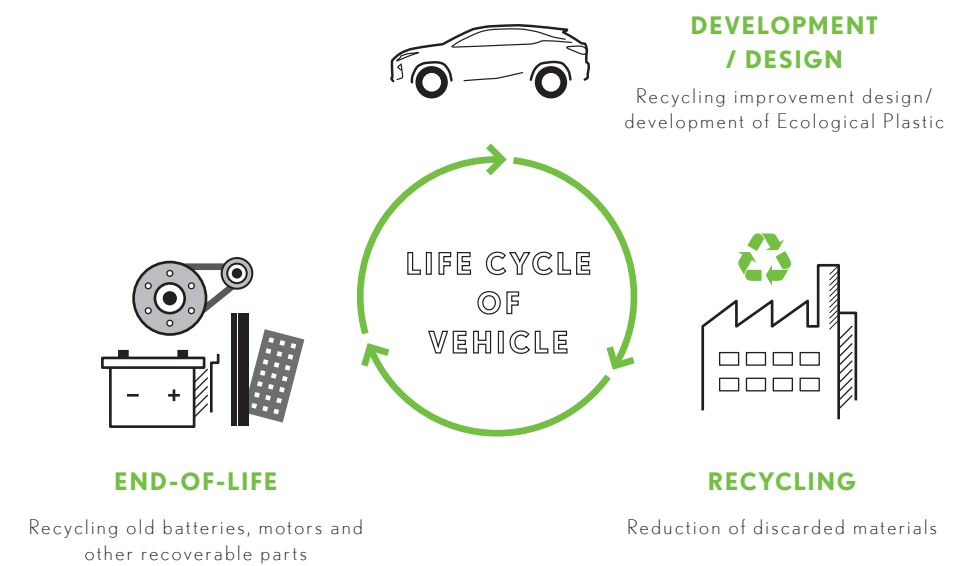
**KIMIHIRO  
SAKAKIBARA**

*Master of Paint,  
32 years of experience*



LEXUS  
ENVIRONMENT

*Our commitment to the environment  
is embedded into all our activities  
and vehicles.*



At Lexus, sustainability is an enormous challenge that we gladly accept. We are committed to finding better, more efficient ways to contribute to a healthier planet, leading the industry in better business practices. Our focus on the environment drove our development and global leadership of hybrid luxury vehicles, and the knowledge we have gained is applied in all of our vehicles. Our commitment to recovering, recycling and re-using permeates the entire company. To reduce waste to a minimum, we carefully recycle various materials in our offices, factories, and sales facilities, reducing CO<sub>2</sub> levels beyond our achievements on the road.

Specific initiatives to enhance the environment include integrating a keen environment-friendly focus on the entire life cycle of each vehicle, from design and production, through to the recycling of vehicles at the end-of-life. To reduce CO<sub>2</sub> emissions, at the design stage we specify extensive use of plant-derived plastics for components, instead of petroleum-derived plastics. During production, we make repeated use of reusable items, work hard to efficiently use resources to minimize waste, and recycle any waste produced.

# RX

## EXTERIOR & INTERIOR COLOURS

*A palette of colours, from bold and luminous to nuanced and sophisticated, lets you express your individuality.*



White Nova Glass Flake <083>\*1



Sonic Quartz <085>\*2



Platinum Silver Metallic <1J4>



Sonic Titanium <1J7>



Black <2I2>



Graphite Black Glass Flake <223>



Red Mica Crystal Shine <3R1>



Sleek Ecru Metallic <4U7>\*2



Amber Crystal Shine <4X2>\*2



Deep Blue Mica <8X5>



Heat Blue Contrast Layering <8X1>\*1



18-inch aluminium wheels  
(RX 300 Executive)



20-inch aluminium wheels  
(RX 300 & RX 350 Luxury,  
RX 350L & RX 450h Premium)



20-inch aluminium wheels  
(RX 300 F SPORT)

\*1 Available on F SPORT package only.

\*2 Not available on F SPORT package.

RX 300 EXECUTIVE / RX 350L & RX 450H PREMIUM <SMOOTH LEATHER>



Ivory



Topaz Brown



Black

<TRIM>



3D Film



Noble Brown

<COLOUR COMBINATIONS>

		IVORY (3D FILM)	BLACK (3D FILM)	NOBLE BROWN (3D FILM)	TOPAZ BROWN (3D FILM)
		04	24	43	54
085	SONIC QUARTZ	•	•	•	•
114	PLATINUM SILVER ME.	•	•	•	•
117	SONIC TITANIUM	•	•	•	•
212	BLACK	•	•	•	•
223	GRAPHITE BLACK GF.	•	•	•	•
3R1	RED MC. CS.	•	•	•	•
4U7	SLEEK ECRU ME.	•	•	•	•
4X2	AMBER C.S	•	•	•	•
8X5	DEEP BLUE MICA	•	•	•	•

RX 300 & RX 350 LUXURY <SEMI-ANILENE LEATHER>



Ivory



Black



Noble Brown

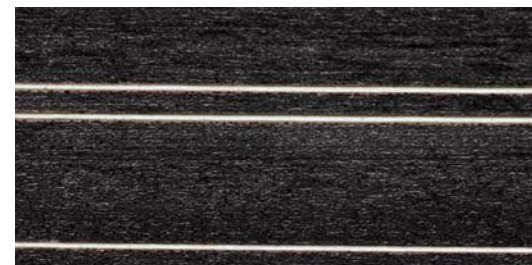


Topaz Brown



Rich Cream

<TRIM>



Laser Cut Wood

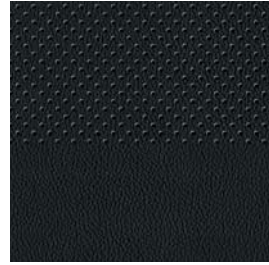
<COLOUR COMBINATIONS>

		IVORY (LASER-CUT WOOD)	BLACK (LASER-CUT WOOD)	NOBLEBROWN (LASER-CUT WOOD)	TOPAZBROWN (LASER-CUT WOOD)	RICH CREAM (LASER-CUT WOOD)
		00	20	40	50	60
085	SONIC QUARTZ	•	•	•	•	•
1J4	PLATINUM SILVER ME.	•	•	•	•	•
1J7	SONIC TITANIUM	•	•	•	•	•
212	BLACK	•	•	•	•	•
223	GRAPHITE BLACK GF.	•	•	•	•	•
3R1	RED MC. CS.	•	•	•	•	•
4U7	SLEEK ECRU ME.	•	•	•	•	•
4X2	AMBER C.S	•	•	•	•	•
8X5	DEEP BLUE MICA	•	•	•	•	•

RX 300 F SPORT <SMOOTH LEATHER>



White

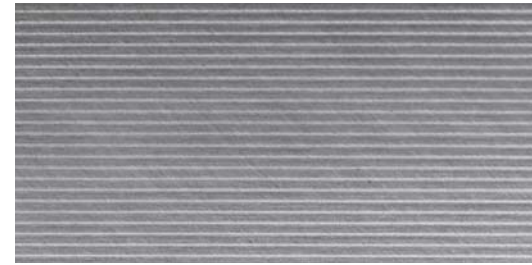


Black



Dark Rose

<TRIM>



Aluminium

<COLOUR COMBINATIONS>

		WHITE (ALUMINIUM)	BLACK (ALUMINIUM)	DARK ROSE (ALUMINIUM)
		05	25	30
083	WHITE NOVA GF.	•	•	•
114	PLATINUM SILVER ME.	•	•	•
117	SONIC TITANIUM	•	•	•
212	BLACK	•	•	•
223	GRAPHITE BLACK GF.	•	•	•
3R1	RED MICA CS.	•	•	•
8X5	DEEP BLUE MICA	•	•	•

## SPECIFICATIONS

ENGINE	RX 450H PREMIUM	RX 350L PREMIUM	RX 350 LUXURY	RX 300 EXECUTIVE	RX 300 LUXURY	RX 300 F SPORT
Engine Type	V6, 24-Valve DOHC with Dual VVT-i	V6, 24-Valve DOHC with Dual VVT-iW		In-line 4, 16-valve DOHC, Twin-scroll Turbocharger and Intercooler with Dual VVT-iW & D-4ST		
Drive	All-Wheel Drive		Front-Wheel Drive	All-Wheel Drive		
Transmission Type	E-CVT	8-Speed Automatic Transmission		6-Speed Automatic Transmission		
Bore x Stroke	94.0 x 83.0 mm			86.0 x 86.0 mm		
Displacement	3456 cc			1998 cc		
Compression Ratio	13.0	11.8		10.0		
Max. Output (Combined)	230 kW (308 bhp) / 6000 rpm	216 kW (289 bhp) / 6300 rpm	221 kW (296 bhp) / 6300 rpm	175 kW (234 bhp) / 4800 - 5600 rpm		
Max. Torque	335 Nm / 4600 rpm	358 Nm / 4600 - 4700 rpm	370 Nm / 4600 rpm	350 Nm / 1650 - 4000 rpm		
Max. Speed	200 km/h					
Acceleration (0 - 100km/h)	7.7 sec	8.1 sec	7.9 sec	9.2 sec	9.5 sec	
Fuel Consumption	5.7 L / 100km [17.5 km/L]	10.2 L / 100km [9.8 km/L]	9.6 L / 100km [10.4 km/L]	8.1 L / 100km [12.3 km/L]	8.4 L / 100km [11.9 km/L]	
Carbon Emissions	131 g/km	234 g/km	223 g/km	189 g/km	195 g/km	
VES Banding	B	C2	C2	C2	C2	

### RX HYBRID MOTOR AND BATTERY

Motor Type	Permanent Magnet Synchronous Motor
Max. Output (Front)	123 kW
Max. Output (Rear)	50 kW
Max Torque (Front)	335 Nm
Max. Torque (Rear)	139 Nm
Battery Type	NiMH
Number of Battery Cells	240

### CHASSIS

Brake (Front)	Ventilated Disc Brake	
Brake (Rear)	Ventilated Disc Brake	
Suspension (Front)	MacPherson Strut	MacPherson Strut (AVS)
Suspension (Rear)	Double Wishbone	Double Wishbone (AVS)
Steering System	Electronic Power Steering	

### MEASUREMENTS

Length	4890 mm	5000 mm	4890 mm		
Width	1895 mm		1690 mm		
Height	1690 mm	1700 mm	1690 mm		
Wheelbase	2790 mm		1690 mm		
Tread (Front)	1640 mm				
Tread (Rear)	1630 mm				
Min. Turning Radius (Tyre)	5.9 m				
Kerb Weight	2105 - 2210 kg	2090 - 2150 kg	1980 - 2085 kg	1890 - 1995 kg	1965 - 2070 kg
Gross Vehicle Weight	2715 kg	2720 kg	2575 kg	2500 kg	2575 kg
Boot Capacity (No Seats Folded)	453 L	211 L	453 L		
Boot Capacity (3rd Row Folded)	-	652 L	-		
Boot Capacity (2nd & 3rd Row Folded)	-	1656 L	-		
Fuel Tank Capacity	65 L	72 L			



70 All specifications, information and features are accurate at the time of printing and are subject to change without notice.

## FEATURES

	RX 300 EXECUTIVE	RX 300 LUXURY	RX 300 F SPORT	RX 350 LUXURY	RX 350L PREMIUM	RX 450H PREMIUM
<b>ULTIMATE COMFORT</b>						
Electrically Adjustable Steering Wheel	•	•	•	•	•	•
Auto Retractable Wing Mirrors with Memory	•	•	•	•	•	•
Electrochromic (EC) Inside Rear View Mirror	•	•	•	•	•	•
Air Ventilated Front Seats (Cooler + Heater)	Cooler	•	Cooler	•	Cooler	Cooler
Air Ventilated Rear Seats (Heater)	-	•	-	•	-	-
Original Factory-fitted Upholstery	Smooth Leather	Semi-Aniline Leather	F SPORT Smooth Leather	Semi-Aniline Leather	Smooth Leather	Smooth Leather
Power Adjustable Front Seats	8-way	10-way	8-way	10-way	8-way	8-way
Memory Seats	D	D & P	D	D & P	D	D
Seat Lumbar Support	2-way	4-way	2-way	4-way	2-way	2-way
Dual-zone Independent Climate Control	•	•	•	•	Tri-zone	•
Ambient Illumination	-	•	•	•	-	-
Manual Rear Side Sunshade	-	•	•	•	-	-
Power Tailgate with Emblem Sensor	•	•	•	•	•	•
Paddle Shifters	-	-	•	-	-	-
<b>INTUITIVE TECHNOLOGY</b>						
Smart Keyless Go	•	•	•	•	•	•
LED Daytime Running Lamps	•	•	•	•	•	•
Bi-LED Headlamps	•	-	-	-	-	-
Bi-LED Triple 'L' Headlamps with LED Sequential Indicators	-	•	•	•	•	•
LED Front Fog Lamps	•	•	•	•	•	•
LED Cornering Lamps	-	•	•	•	-	-
Auto-Levelling	•	Dynamic	Dynamic	Dynamic	Dynamic	Dynamic
Headlamp Cleaner	-	•	•	•	•	•
Auto Rain Sensor	•	•	•	•	•	•
Cruise Control	•	•	•	•	•	•
Coloured Head-up Display	•	•	•	•	-	•
Start/Stop Technology	•	•	•	-	-	-
Adaptive Variable Suspension (AVS)	-	-	•	-	-	-
Drive Mode Select Switch (Eco/Normal/Sport/Sport+)	3	3	4	3	3	4 (EV)
Power Folding Rear Seats	-	•	-	•	3 <sup>rd</sup> Row	-
Lexus Integrated Navigation System Display Screen	8-inch	12.3-inch	12.3-inch	12.3-inch	12.3-inch	12.3-inch
Lexus Remote Touch Interface	•	•	•	•	•	•
Wireless Device Charger	•	•	•	•	•	•
Touch Capacitive LED Light Switches	•	•	•	•	•	•
Door Handles with LED Illumination and Hidden Keyhole	•	•	•	•	•	•
Tilt & Slide Moonroof / Panoramic Glass Roof	-	Panoramic Glass Roof	Moonroof	Panoramic Glass Roof	-	Moonroof
Roof Rails	-	•	•	•	•	•
<b>AUDIO &amp; ENTERTAINMENT</b>						
USB x 2 / iPod Playback Function	•	•	•	•	•	•
AM/FM tuner, DVD player	•	•	•	•	•	•
Phone Bluetooth	•	•	•	•	•	•
Lexus Premium Audio System with 9 Speakers	•	-	-	-	-	-
Lexus Premium Audio System with 12 Speakers	-	•	•	•	•	•
<b>360° PROTECTION</b>						
10 SRS Airbags	•	•	•	•	•	•
Blind Spot Monitor (BSM) & Rear Cross Traffic Alert (RCTA)	•	•	•	•	•	•
Hill Start Assist	•	•	•	•	•	•
Electric Power Steering (EPS) + Vehicle Stability Control (VSC) + Anti-Lock Brake System (ABS) + Traction Control System (TCS)	•	•	•	•	•	•
360° Panoramic View Monitor	-	•	-	•	-	-
Rear View Camera with Back Guide Monitor	•	-	•	-	•	•
Lexus Parking Assist System with 8 Sensors	•	•	•	•	•	•
Auto-Location Tyre Pressure Warning System	•	•	•	•	•	•
<b>RIMS &amp; TYRES</b>						
Bridgestone 235 / 65 R18 SM Aluminum Wheels (7-Spoke)	•	-	-	-	-	-
Bridgestone 235 / 55 R20 SM Aluminum Wheels (5 Twin-Spoke)	-	•	-	•	•	•
Bridgestone 235 / 55 R20 SM Aluminum Wheels (F SPORT Dark Metallic Mesh Spoke)	-	-	•	-	-	-
Spare Tyre	•	•	•	•	•	•

Note: Vehicles illustrated, specifications and equipment detailed in this specification sheet may vary. Lexus reserves the right to alter any details of specifications and equipment without notice. Please consult your Lexus sales consultant for details.

