

# RX

RX450h / RX350L /  
RX350 / RX300







Note: Vehicles pictured and specifications detailed in this catalog may vary from actual models and equipment available in your area. Please inquire at your local dealer for details on the availability of features.



Note: Vehicles pictured and specifications detailed in this catalog may vary from models and equipment available in your area. Please inquire at your local dealer for details on the availability of features.



Note: Vehicles pictured and specifications detailed in this catalog may vary from models and equipment available in your area. Please inquire at your local dealer for details on the availability of features.



LEXUS

INTELLIGENCE

FIVE



## EVOLVING LUXURY



### CONCEPT



Progressive Sophistication.

The pioneer in luxury SUVs, the RX continues to evolve and lead. Driven by its DNA to actively undertake fresh challenges, its sophisticated design, performance and advanced technologies provide fresh value to enrich modern lifestyles.



»» INTELLIGENCE





The development of the RX's 'Progressive Sophistication' was driven by a passion to deepen three key elements of driving pleasure: 'Sophisticated Yet Aggressive Design', 'Driving Dynamics', and 'Advanced Technology and Connectivity'. 'Sophisticated Yet Aggressive Design' focused on shaping a powerful, solid-looking design with an exceptional feeling of unity. A finely-honed blend of elegance and aggression, it is expressed in the overall form, balance and detail, with rounded surfaces adding a subtle elegance to the strong captivating silhouette.

'Driving Dynamics' pursued a clear and deep driving feel that unifies driver and vehicle to dramatically enhance driving pleasure, realized by focusing on

enhancing body rigidity and refining the suspension. The smooth and exhilarating acceleration, linear steering feel, accurate response to driver input and outstanding ride comfort elevate the enjoyment of everyday driving, whether turning at an intersection or changing lanes on the expressway.

'Advanced Technology and Connectivity' aims to integrate advanced technologies that RX drivers value into a refined driving experience. The RX's pioneering spirit inspired adoption of the innovative BladeScan AHS (Adaptive High-beam System) headlamps to help provide reliable, stress-free driving at night, and an advanced multimedia system with touchscreen operation and seamless smartphone connectivity.



#### Panoramic Glass Roof

Without compromising on head clearance space, the panoramic glass roof adds a greater sense of openness to the RX.



DESIGN



Deepening the 'Seductive Strength' theme that fuses progressive sophistication and brave design, the smooth curves of the exterior shape a captivating presence, while optimizing the packaging in the spacious cabin and luggage space for which the RX is renown.



» INTELLIGENCE

PROGRESSIVE SOPHISTICATION  
MEETS BRAVE DESIGN

Note: Vehicles pictured and specifications detailed in this catalog may vary from models and equipment available in your area. Please inquire at your local dealer for details on the availability of features.



### EXTERIOR

The voluminous form and smooth surfaces that seduce from a distance reveal meticulous detail close-up, exquisitely crafted to blend form with function in the signature Lexus spindle grille and distinctive ultra-compact headlamps.



### INTERIOR

The refined use of natural materials including metal, leather and wood creates a tasteful contrast with the subtle integration of advanced technology, blending beauty, functionality and convenience in the elegant ambience of the cabin.



A LEADING PERFORMANCE,  
NOW ENHANCED

PERFORMANCE



A passion for sporty performance and an obsession for constant improvement drives us to further hone the RX's dynamic responsiveness and intuitive handling and control. It possesses qualities of an unstoppable pioneer that you'll appreciate in everyday driving, and savor even more on the open road.



» INTELLIGENCE





**Chassis**

At the heart of the RX's dynamic driving pleasure is a focus on enhancing exhilarating performance and sporty handling, especially handling stability to create a close sense of unity with the vehicle, together with steering response and ride comfort. It was realized by making a lightweight, high rigidity body structure from hot-stamp, high-tensile steel and aluminum, with strategically positioned reinforcements, the extensive use of spot welds and body adhesives, and advanced production technologies including laser screw welding.

**Aerodynamics**

A comprehensive approach to aerodynamics contributes to quiet comfort in the cabin, fuel-efficient performance, low sensitivity to wind turbulence, and excellent handling stability even during high-speed driving. Optimizing the body design, including the bumpers, rear spoiler and corner fins, is complemented under the body by a flat floor, engine and lower arm covers, spats on all four wheels, and aero stabilizing fins.



**Pre-loaded differential**

This innovative differential pre-loads torque under light loads or low rotational speed, contributing to highly-precise steering for excellent straight-line stability and acceleration performance.



**Hybrid system**

For dynamic driving and exceptional environmental performance, Lexus Hybrid Drive intelligently combines the power of a highly-efficient 3.5-liter gasoline engine with electric power from a high-output motor.

**3.5-liter V6 hybrid engine**

The V6 hybrid Atkinson Cycle engine features Dual VVT-i and advanced D-4S fuel injection system to deliver exciting performance with outstanding drivability, excellent fuel efficiency, and reduced emissions.\*



**E-Four (Electric four-wheel drive)**

E-Four uses a rear motor that operates independently from the front motor to optimize distribution of front and rear drive force. In addition, it features slip and yaw rate feedback controls, for excellent vehicle stability in a wide range of driving conditions.

\* VVT-i: Variable Valve Timing-intelligent. D-4S: Direct injection 4 stroke gasoline engine Superior version.

Note: Vehicles pictured and specifications detailed in this catalog may vary from models and equipment available in your area. Please inquire at your local dealer for details on the availability of features.



**3.5-liter V6 gasoline engine**

The V6 Atkinson Cycle engine with Dual VVT-i (Intake side: VVT-iW) generates exhilarating driving performance balanced by excellent fuel efficiency. The innovative D-4S fuel injection system features both direct and port injectors, to realize excellent output, torque and fuel efficiency, while complying with strict emission standards.\*1



**2.0-liter direct injection turbocharged engine**

Compact and lightweight, the 2.0-liter turbocharged Atkinson cycle engine with Dual VVT-i (Intake side: VVT-iW) delivers exhilarating driving performance and excellent fuel economy. Advanced technologies including ESTEC to boost thermal efficiency and D-4ST, a direct injection and turbo technology, further enhance fuel efficiency.\*3



**8 Super ECT**

The super intelligent 8-speed automatic transmission features a wide gear ratio that delivers smooth starting and acceleration performance, together with excellent fuel economy, contributing to the dynamic driving performance and showcasing the RX's distinctive power and smoothness under various conditions. Multi-mode Automatic Transmission and AI-SHIFT control further enhance driving pleasure.\*2

**Dynamic Torque Control AWD**

The electronically-controlled system continually varies distribution of drive power to the rear wheels, switching from front-wheel drive to AWD to realize handling stability to suit the driving conditions, especially while cornering, together with excellent fuel economy.



**6 Super ECT**

The super intelligent 6-speed automatic transmission features advanced drive-force-on-demand control logic that realizes a high level of vehicle control in line with accelerator operation, together with a sophisticated acceleration feeling. The shift control was fine-tuned and the lock-up range extended to match the turbo engine characteristics, contributing to enhanced fuel economy. Multi-mode Automatic Transmission and AI-SHIFT control further contribute to driving pleasure.\*2



\*1 VVT-iW: Variable Valve Timing-intelligent Wide.  
 \*2 ECT: Electronic Controlled Transmission. AI: Artificial Intelligence.  
 \*3 ESTEC: Economy with Superior Thermal Efficient Combustion. D-4ST: Direct injection 4 stroke gasoline engine Superior version with Turbo.

Note: Vehicles pictured and specifications detailed in this catalog may vary from models and equipment available in your area. Please inquire at your local dealer for details on the availability of features.



**Shock absorbers**

Careful refining of each shock absorber component optimizes damping force, helping to smooth minor road inputs, absorb larger jolts, and maintain a supple feel for agile handling together with excellent ride comfort. A Friction Control Device in the shock absorbers reduces high frequency vibrations on slightly uneven road surfaces to further enhance ride comfort.



**Front and rear suspension**

The rigidity of the MacPherson strut front suspension and trailing-arm double wishbone rear suspension were enhanced to realize agile handling and exhilarating driving pleasure, whether driving city streets or winding roads. Special attention was paid to increasing the rigidity of the hub bearings to enhance responsiveness, and the rear stabilizer to reduce understeer and roll.



**AVS (Adaptive Variable Suspension system)**  
AVS optimally controls the damping force of the shock absorbers on all four wheels in response to driver input and road surface conditions, contributing to the excellent ride comfort and handling.

**Drive mode select**

Drive mode select provides integrated control of multiple systems to let you tune performance to suit your driving style. On vehicles equipped with AVS you can select and change between Normal, Eco, Sport S and Sport S+ Modes. In addition, Custom Mode enables drivers to set their preferred settings for the powertrain, AVS, EPS (Electric Power Steering) and air conditioning.



**Disc brakes**

The brakes on gasoline models were refined to realize an excellent feeling of brake rigidity when the brakes are applied. For hybrid models, the focus was on developing the smooth delivery of braking force with a natural transition between regenerative and hydraulic braking.

Note: Vehicles pictured and specifications detailed in this catalog may vary from models and equipment available in your area. Please inquire at your local dealer for details on the availability of features.

# LED BY EXHILARATING INNNOVATION

## FEATURES



The RX continues to lead the way and provide fresh value with sophisticated features that blend innovative technology and brave design. Its advanced connectivity and functionality enhance safety and comfort for a relaxed, stress-free driving.

» INTELLIGENCE





#### 3-eye Bi-Beam LED headlamps

The ultra-compact 3-eye Bi-Beam LED headlamps combine a distinctive design with exceptional light distribution. The LED turn signal lamps illuminate sequentially from the inner side to the outside of the headlamps.



#### Bi-Beam LED headlamps

The Bi-Beam headlamps feature one lamp that switches between high and low beams to generate a bright light for excellent visibility at night. The arrowhead-shaped DRL (Daytime Running Lamps) emit a stylish Lexus signature.

#### LED front fog lamps

LED fog lamps integrated into the lower front bumper enhance the low center of gravity of the front face. They emit a bright beam, contributing to excellent visibility for safe driving in low light and at night.



#### LED rear combination lamps

The distinctive rear lamps feature 4 large L-shaped Lexus motifs in the upper lamps that wrap around the side in a deep-set carve. This elegant design is mirrored in the inverted L-shaped motifs of the lower lamps, creating a wide signal and projecting a strong presence. The wide design and low setting of the lamps emphasize the RX's low center of gravity. The LED sequential turn signal lamps illuminate from the inner to the outer side of the lamp to intuitively convey the turn direction.



#### Power back door

Even if both hands are full, when carrying the Electronic Key you can open and close the back door automatically by moving your foot under the rear bumper and out again.



#### Door handles

The refined design displays a warm hospitality with a dynamic shape that is easy to grip. A bright silhouette line and integrated foot area illumination on the handles guide you at night, then gently fade.



#### Rear bumper

The balance of sophistication and aggression in the RX's 'Seductive Strength' design is evident in the rear bumper. Character lines extending from the sides to the bumper reflect the window graphics in a sweeping movement to the rear, emphasizing the wide stance and stylish elegance, and complementing the strong SUV image evoked by the three-dimensional shape of the underguard. Hybrid models feature an exclusive metal plated garnish strip under the lower bumper.



**Meters**

A subtle luxury touch is the design of the meters which fuses the simple functionality of 4-dial analog meters with a hi-tech digital display. The large analog speedometer and tachometer have three-dimensional meter faces for excellent visibility.

**Multimedia coordination function**

The RX's seamless integration of advanced technologies supports the coordinated display of information from the multimedia systems on the EMV (Electro Multi-Vision) touch display in the center of the instrument panel and the 4.2-inch color TFT (Thin Film Transistor) multi-information display in the meter cluster.



**Color head-up display**

The large color head-up display projects a range of frequently checked driving information and warnings on the lower windshield glass in the driver's line of sight, requiring only a movement of the eyes to see it.



**Remote Touch Interface**

An interface designed for simple, smartphone-style operation lets users interact intuitively with the navigation and audio systems on the EMV touch display. Integrated into the center console, it provides easy control of the systems without disturbing the driving posture and line of sight.



**EMV touch display**

Further evolving the Human Machine Interface, the touchscreen display enables the driver and front seat passenger to intuitively control various systems by directly touching the screen like a smartphone. For convenience, audio system information, incoming mobile calls, and some navigation on the EMV touch display can also be displayed on the multi-information display, and controlled using switches on the steering wheel.

**Overhead console LED lamp switches**

Refined hospitality extends to intuitive operation of the front warm white LED dome lamp and silky white LED map lamps in the overhead console. Touch switches that detect finger proximity turn the appropriate lamp on or off.



**Wireless charger**

This thoughtful charging tray in the center console box enables wireless charging of batteries in Qi-compatible smartphones and electronic devices simply by placing them on the charger tray.



**Smartphone holder**

A convenient smartphone holder is integrated in the center console, adjacent to USB ports for easy charging. Designed to hold a range of smartphones firmly in place, it is positioned for easy access by the front seat passenger, further enhancing its usability and convenience.

**USB ports/mini-jack/power outlets**

Two USB ports, a mini-jack and power outlet in the center console box support the charging and use of electronic devices. Additional power outlets are conveniently located in the center cluster and the side of the luggage space, together with two USB ports for charging electronic devices in the center console and the rear of the center console box for the convenience of rear seat passengers.



USB charging ports (Center console)



USB connection ports/mini-jack/power outlet (Center console box)



USB charging ports (Rear of the center console box)

Note: Vehicles pictured and specifications detailed in this catalog may vary from models and equipment available in your area. Please inquire at your local dealer for details on the availability of features.



#### Rear door window sunshades

Manual sunshades on the rear door windows give second row seat passengers convenient control over heat and light. Eliminating gaps between the shades and window trim helps to keep the sun from coming directly into the second row seats.



#### Second row seats

The refined comfort of the second row seats is based on the spacious packaging that enables excellent seating posture and headroom, and a natural foot position for relaxed comfort. Seat recline and slide functions let passengers tailor their position to further enhance ride comfort.



#### Luggage space

The focus on creating a spacious cabin endows the RX with ample capacity to carry five people and their luggage. The power back door opens wide to provide easy access to a large luggage space that can accommodate four full-set golf bags or four suitcases, while carrying three passengers in the second row seats. A temporary storage space behind the second row seats for the tonneau cover enables the luggage space to accommodate larger items.

#### Power back door controls

Convenient controls for the power back door are set in the instrument panel and Electronic Key. In addition, when the close and lock switch integrated in the back door is pressed, the door automatically locks when it closes. A memory function lets users set the opening clearance for the door.



#### Power folding second row seats

Enhancing versatility and convenience, the second row seats can be reclined at the touch of a button integrated into each second row seat. They can also be folded flat or upright using switches in the second row seats and side of the luggage space.





## RX350L

The RX350L changes to suit your needs, whether you require comfortable third row seats for extra passengers or a spacious luggage compartment. Theater-style seating provides a slightly higher eye point in each successive row so that all occupants enjoy excellent visibility and a satisfying open feeling.





#### Luggage space

The RX350L provides a flat, gap-free luggage space, regardless of whether the third row seats are in use or stowed. The tonneau cover stores under the luggage space floor to provide ample room for luggage even when carrying seven people. Both the second row and third row seats have a split seatback design to enable different luggage configurations. The power folding third row seats are controlled by switches in the passenger side trim of the second row seats and in the left side of the luggage space.\*



#### Walk-in mode

Touch the walk-in lever on the side of the second row seats to slide them forward. The second row seats can also be folded flat for easy access to the third row seats. The flat floor enables comfortable access.



#### Third row seat air conditioner

The left and right third row seats have adjustable air conditioner vents in the side panels. In addition, a control panel located beside the left seat allows rear-seat occupants to adjust the temperature, airflow and other settings.



#### Third row seats

The second row seats slide forward to provide ample legroom when the third row seats are occupied. The power folding 50/50 split seats fold away independently, providing extra luggage space to accommodate changing passenger and luggage combinations.

\* Second row seats fold manually.

Note: Vehicles pictured and specifications detailed in this catalog may vary from models and equipment available in your area. Please inquire at your local dealer for details on the availability of features.

**SAFETY**



Innovative active safety systems designed to help support safe, reliable and stress-free driving are complemented by advanced passive occupant protection measures, deepening peace of mind and driving pleasure.



» INTELLIGENCE



LEADING SAFETY INNOVATION



## LEXUS SAFETY SYSTEM +



### Lane Tracing Alert (LTA)

The LTA system uses forward facing camera to monitor lane markings and automatically apply steering inputs to keep the vehicle centred in its lane. While driving on highways and automobile-only roads with Dynamic Radar Cruise Control activated, it helps assist steering to keep the vehicle in the lane, reducing the burden on the driver and supporting safe driving.

### LDA (Lane Departure Alert)

LDA alerts the driver of possible lane or road deviations and helps assist steering to avoid them, when LTA is not active.

### Dynamic Radar Cruise Control

In addition to maintaining a constant speed, Dynamic Radar Cruise Control uses the millimeter-wave radar and camera sensors to detect a vehicle driving ahead and maintain an appropriate distance between vehicles.



### Pre-Collision System

When the millimeter-wave radar and monocular camera sensors detect a vehicle ahead, a pedestrian during the day or at night, or a cyclist during the day\*<sup>1</sup> and determine that a collision is likely, it alerts the driver and activates pre-collision brake assist when the driver depresses the brake pedal. If the driver cannot depress the brake pedal, it activates the pre-collision brake to help avoid a collision or mitigate the impact force.



### AHS (Adaptive High-beam System)

In the BladeScan AHS, LED light is projected onto a plate rotating at high speed called a 'blade mirror,' with the reflected light passing rapidly through a lens to illuminate the forward direction. The LEDs switch on and off with optimal timing to enable fine control of light distribution, enhancing the range of illumination while blocking a small area in front of the car. This enables the BladeScan system to provide a broad field of high-beam illumination with natural light distribution to enhance the visibility of road shoulders and other more distant areas, supporting early driver recognition of pedestrians and road signs without dazzling the drivers of oncoming or preceding vehicles.



### Blind Spot Monitor System

When the quasi-millimeter-wave radars in the rear bumper detect vehicles in adjacent lanes that aren't visible in the door mirrors, the system activates an LED warning indicator in the relevant door mirror the moment a vehicle enters this blind spot.



### Parking Support Alert (PKSB)

Through clearance sonars, the Parking Support Brake detects obstacles around the whole of the vehicle, and applies drive force control and enhanced braking power at low speeds. If static objects such as walls are detected at the front and rear, the driver is alerted by a buzzer, the hazard is displayed and the brakes are applied using brake force control. If an obstacle is detected from the rear through the Rear Cross Traffic Alert, the Parking Support Brake will notify the driver and attempt to stop the vehicle to avoid a collision.



### Panoramic view monitor

To help check areas surrounding the vehicle that are difficult to see from the driver's seat, the system shows a bird's-eye view of the vehicle in real time on the EMV touch display, using a composite image taken by cameras mounted on the front, sides, and rear of the vehicle.\*<sup>3</sup>

### SRS (Supplemental Restraint System) airbags

The RX features dual-stage SRS airbags (Front seats), SRS knee airbag (Driver's seat), SRS cushion airbag (Front passenger's seat) that supports seatbelt restraint by lifting the front edge of the seat cushion during a frontal collision, SRS side airbags (Front and outboard second row seats), and SRS curtain shield airbags (Front and rear door windows).\*<sup>4</sup>



\*<sup>1</sup> Pedestrian and cyclist detection is not available in some markets. Please inquire at your local dealer for details.

\*<sup>2</sup> Detection of vehicles approaching from behind while reversing is not available in some markets. Please inquire at your local dealer for details.

\*<sup>3</sup> The area the cameras can show is limited. Be sure to visually check your surroundings before you proceed.

\*<sup>4</sup> The SRS airbags are supplemental devices to be used with the seatbelts. The driver and all passengers in the vehicle must wear their seatbelts properly at all times. Never install a rear-facing CRS (Child Restraint System) on the front passenger's seat. For a forward-facing CRS, it is recommended you use it in the rear seats. Please do not use accessories for the seats which cover the parts where the SRS side airbags should inflate. Such accessories may prevent the SRS side airbags from activating correctly, causing serious injury (Lexus genuine seat covers are specifically designed for models equipped with the SRS side airbags. To find out about availability in your area, please inquire at your local dealer). The photo shows all the SRS airbags activated for display purposes only (the SRS side and curtain shield airbags only inflate on the side of the collision in an actual accident). For details on these and other important safety features, be sure to read the Owner's Manual carefully.

Note: The systems functions may not operate properly depending on the weather, road and vehicle conditions or other factors. Be sure to read the Owner's Manual carefully. Do not overly rely on these systems, as there is a limit to the performance they can provide. The driver is always responsible for paying attention to the vehicle's surroundings and driving safely.

Vehicles pictured and specifications detailed in this catalog may vary from models and equipment available in your area. Please inquire at your local dealer for details on the availability of features.

EXTERIOR & INTERIOR  
COLORS

*The refined elegance of intriguing exterior colors and distinctive trim combinations exude a seductive and glamorous depth, giving personal expression to your enjoyment of 'Progressive Sophistication'.*



Sonic Quartz <085>



Black <212>



Sonic Titanium <117>



Red Mica Crystal Shine <3R1>



Graphite Black Glass Flake <223>



Ice Ecru Mica Metallic <4X8>



Amber Crystal Shine <4X2>



Sonic Iridium <1L1>



Terrane Khaki Mica Metallic <6X4>



Deep Blue Mica <8X5>



Sonic Chrome <1L2>



18-inch aluminum wheels



20-inch aluminum wheels



20-inch aluminum wheels (Bronze)



20-inch aluminum wheels (Hyper Chrome Metallic)

Note: Vehicles pictured and specifications detailed in this catalog may vary from models and equipment available in your area. Please inquire at your local dealer for details on the availability of features.

<SEMI-ANILINE LEATHER>



Ivory



Black



Ocher



Noble Brown



Rich Cream

<SMOOTH LEATHER>



Ivory



Black



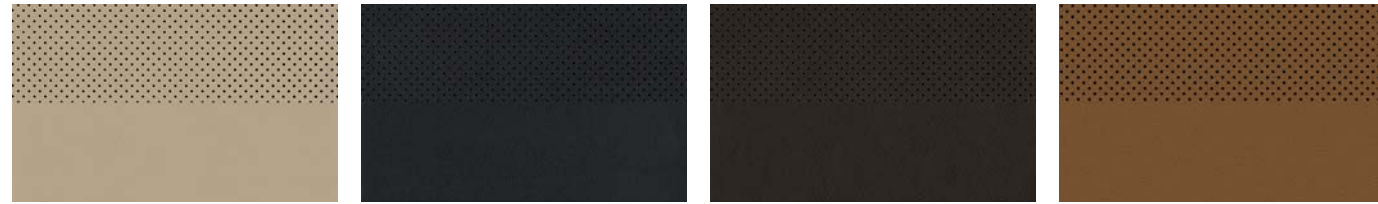
Ocher



Noble Brown

Note: Vehicles pictured and specifications detailed in this catalog may vary from models and equipment available in your area. Please inquire at your local dealer for details on the availability of features.

<SEMI-ANILINE LEATHER>



Ivory

Black

Noble Brown

Ocher



Rich Cream

<SMOOTH LEATHER>



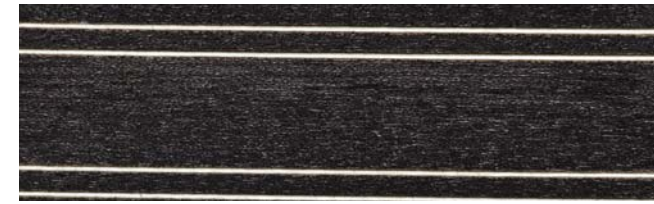
Ivory

Black

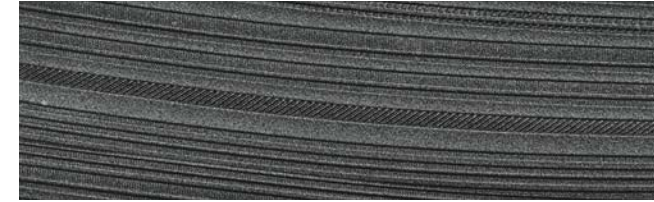
Noble Brown

Ocher

<TRIM>



Laser Cut Wood



3D Film

SEATING MATERIAL	INTERIOR COLORS	INTERIOR TRIM	
		Laser Cut Wood	3D Film
Semi-aniline Leather	Ivory	●	
	Black	●	
	Ocher	●	
	Noble Brown	●	
	Rich Cream	●	
Smooth Leather	Ivory		●
	Black		●
	Ocher		●
	Noble Brown		●

●: Available combination.  
 \* Not available on RX350L.

## SPECIFICATIONS

ENGINE	RX 300 EXECUTIVE	RX 300 LUXURY	RX 350 LUXURY	RX 350L PREMIUM	RX 450H LUXURY
Engine Type	In-line 4, 16-valve DOHC, Twin-scroll Turbocharger and Intercooler with Dual VVT-iW & D-4ST		V6, 24-Valve DOHC with Dual VVT-iW		V6, 24-Valve DOHC with Dual VVT-i
Drive	Front-Wheel Drive	All-Wheel Drive	All-Wheel Drive		
Transmission Type	6-Speed Automatic Transmission		8-Speed Automatic Transmission		E-CVT
Bore x Stroke	86.0 x 86.0 mm		94.0 x 83.0 mm		
Displacement	1998 cc		3456 cc		
Compression Ratio	10.0		11.8		13.0
Max. Output (Combined)	175 kW (234 bhp) / 4800 - 5600 rpm		221 kW (296 bhp) / 6300 rpm	216 kW (289 bhp) / 6300 rpm	230 kW (308 bhp) / 6000 rpm
Max. Torque	350 Nm / 1650 - 4000 rpm		370 Nm / 4600 - 4700 rpm	358 Nm / 4600 - 4700 rpm	335 Nm / 4600 rpm
Max. Speed	200km/h				
Acceleration (0 - 100km/h)	9.2 sec	9.5 sec	7.9 sec	8.1 sec	7.7 sec
Fuel Consumption	8.1 L / 100km [12.3 km/L]	8.4 L / 100km [11.9 km/L]	9.6 L / 100km [10.4 km/L]	10.2 L / 100km [9.8 km/L]	5.7 L / 100km [17.5 km/L]
Carbon Emissions	189 g/km	195 g/km	223 g/km	234 g/km	131 g/kmq
VES Banding	C2	C2	C2	C2	-

### RX HYBRID MOTOR AND BATTERY

Motor Type	Permanent Magnet Synchronous Motor
Max. Output (Front)	123 kW
Max. Output (Rear)	50 kW
Max. Torque (Front)	335 Nm
Max. Torque (Rear)	139 Nm
Battery Type	NiMH
Number of Battery Cells	240

### CHASSIS

Brake (Front)	Ventilated Disc Brake
Brake (Rear)	Ventilated Disc Brake
Suspension (Front)	MacPherson Strut
Suspension (Rear)	Double Wishbone
Steering System	Electronic Power Steering

### MEASUREMENTS

Length	4890 mm		5000 mm	4890 mm
Width	1895 mm		1700 mm	1690 mm
Height	1690 mm		1700 mm	1690 mm
Wheelbase	2790 mm		2790 mm	2790 mm
Tread (Front)	1640 mm		1640 mm	1640 mm
Tread (Rear)	1630 mm		1630 mm	1630 mm
Min. Turning Radius (Tyre)	59 m			
Kerb Weight	1890 - 1995 kg	1965 - 2070 kg	1980 - 2085 kg	2090 - 2150 kg
Gross Vehicle Weight	2500 kg	2575 kg	2575 kg	2720 kg
Boot Capacity (No Seats Folded)	453 L		211 L	453 L
Boot Capacity (3rd Row Folded)	-		652 L	-
Boot Capacity (2nd & 3rd Row Folded)	-		1656 L	-
Fuel Tank Capacity	72 L		72 L	65 L



Note: Please inquire at your local dealer for details on the availability of features.

## FEATURES

	RX 300 EXECUTIVE	RX 300 LUXURY	RX 350 LUXURY	RX 350L PREMIUM	RX 450H LUXURY
<b>ULTIMATE COMFORT</b>					
Electrically Adjustable Steering Wheel	•	•	•	•	•
Original Factory-fitted Upholstery	Smooth Leather	Semi-Aniline Leather	Semi-Aniline Leather	Smooth Leather	Semi-Aniline Leather
Memory Seats	D	D & P	D & P	D	D&P
Power Adjustable Front Seats	8-way	10-way	10-way	8-way	10-way
Seat Lumbar Support	2-way	4-way	4-way	2-way	4-way
Air Ventilated Front Seats (Heater + Cooler)	•	•	•	•	•
Air Ventilated Rear Seats (Heater)	-	•	•	-	•
Dual-zone Independent Climate Control	•	•	•	Tri-zone	•
Door Handles with LED Illumination and Hidden Keyhole	•	•	•	•	•
Ambient Illumination	-	•	•	-	•
Rear Side Sunshade	-	•	•	-	•
Panoramic Glass Roof	-	•	•	-	•
nanoe™ Ion Generator	•	•	•	•	•
<b>INTUITIVE TECHNOLOGY</b>					
SMART Keyless Go (with Card Key)	•	•	•	•	•
Dynamic Radar Cruise Control	•	•	•	•	•
LED Daytime Running Lamps	•	•	•	•	•
Bi-LED Headlamps	•	-	-	-	-
Bi-LED Triple 'L' Headlamps with Sequential Indicators	-	•	•	•	•
LED Front Fog Lamps + Cornering Lamps	-	•	•	•	•
Rain Sensing Wipers	•	•	•	•	•
EC (Electro Chromic) anti-glare Inner Mirror	•	•	•	•	•
Auto-folding EC anti-glare Outer Mirror (with Memory, Heater & Reverse-linked tilt Function)	•	•	•	•	•
Electric Power Steering (EPS)	•	•	•	•	•
Paddle Shifters	•	•	•	•	•
Drive Mode Select Switch (Eco/Normal/Sport)	3	3	3	3	4 (EV)
Engine Start/Stop System	•	•	-	-	-
Colour Head-up Display (HUD)	-	•	•	-	•
LEXUS Integrated Display Touch Screen w/ Navigation	12.3"	12.3"	12.3"	12.3"	12.3"
LEXUS Remote Touch Interface	•	•	•	•	•
Wireless Charger	•	•	•	•	•
Power Folding & Reclining 60:40 Rear Seats	-	•	•	-	•
Hands Free Power Back Door with Kick Sensor	•	•	•	•	•
Roof Rails	•	•	•	•	•
<b>AUDIO &amp; ENTERTAINMENT</b>					
LEXUS Premium Audio System with 12 Speakers	•	•	•	•	•
Apple CarPlay & Android Auto	•	•	•	•	•
AM/FM tuner & DVD Player	•	•	•	•	•
Bluetooth Connectivity	•	•	•	•	•
6 x USB Ports (Front & 2nd Row) / AUX Jack	•	•	•	•	•
<b>360° PROTECTION</b>					
LEXUS Safety System+ (PCS, DRCC, LDA, LTA)	•	•	•	•	•
Automatic High Beam (AHB)	•	-	-	•	-
Parking Assist Monitor (with Distance Guidelines)	•	-	-	•	-
Adaptive High Beam (AHS) BladeScan™ Type	-	•	•	-	•
360° Panoramic View Monitor	-	•	•	-	•
Blind Spot Monitor (BSM) + Rear Cross Traffic Alert (RCTA)	•	•	•	•	•
10 SRS Airbags	•	•	•	•	•
Control Systems: ACA / ABS / EBD / TRC / VSC / Hill-Start Assist	•	•	•	•	•
LEXUS Parking Assist (8 Sensors)	•	•	•	•	•
Electric Parking Brake (EPB)	•	•	•	•	•
Tire Pressure Warning System	•	•	•	•	•
ISOFIX Anchors	•	•	•	•	•
Parking Support Brake (PKSB)	•	•	-	-	-
<b>RIMS &amp; TYRES</b>					
235 / 65 R18 SM Aluminium Wheels (Dark Grey)	•	-	-	-	-
235 / 55 R20 SM Coloured Aluminium Wheels (Bronze)	-	-	-	•	-
235 / 55 R20 SM Aluminium Wheels (Dark Silver)	-	•	-	-	-
235 / 55 R20 SM Hymeta Aluminium Wheels (Hyper Chrome Metallic)	-	-	•	-	•
Spare Tyre	•	•	•	•	•

Note: Vehicles illustrated, specifications and equipment detailed in this specification sheet may vary. LEXUS reserves the right to alter any details of specifications and equipment without notice. Please consult your LEXUS sales consultant for details.



**BORNEO MOTORS (SINGAPORE) PTE LTD** | 33 LENG KEE ROAD SINGAPORE 159102 TEL: 66-31-1388 EMAIL: CR@INCHCAPE.COM.SG

**LEXUS BOUTIQUE** | MON-FRI: 9AM TO 6PM SAT: 9AM TO 7PM SUNDAY & PUBLIC HOLIDAYS: 10AM TO 6PM

**LEXUS SERVICE CENTRE** | MON-FRI: 8AM TO 5PM SAT: 8AM TO 12PM CLOSED ON SUNDAY & PUBLIC HOLIDAYS

**[WWW.LEXUS.COM.SG](http://WWW.LEXUS.COM.SG)**