



Touran.



Highlights.



Powerful TSI engine

The turbocharged TSI engine of the Touran with 150 PS and 250 Nm delivers smooth, effortless performance in all driving conditions, combined with class-leading fuel economy.



LED headlamps

Compared to xenon headlamps, LED headlamps are more efficient and generate illumination that is similar to daylight. The LED daytime running lights also have a distinctive signature.



Versatile seating layout

The 3 seats in the second row can be individually adjusted lengthwise, with a total travel of 200 mm. The backrest angle can also be adjusted so there are virtually limitless combinations.



3-zone 'Air Care Climatronic'

The 'Air Care Climatronic' system, with 3-zone temperature control, allows the driver, front and rear passengers to set their desired temperatures for maximum comfort. Its biogenic filter, unique to the MPV segment, helps prevent pollen and allergens from entering the cabin.



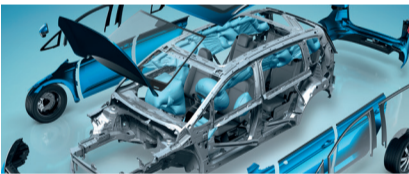
Touchscreen driver interface

Everything at your fingertips: the new generation infotainment systems with high-resolution 8" display, feature quick processing and an extremely user-friendly interface. Smartphone connectivity via App-Connect is available as an option.



Driving profile selection

Four driving modes are available at the touch of a button – Normal, Sport, Eco and Individual. In Eco, the engine management and climate control are optimised for low fuel consumption.



Airbags

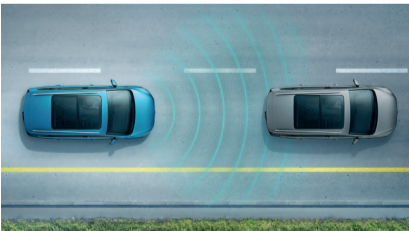
An advanced airbag system ensures that all occupants are well-protected in an impact. The Touran has 7 airbags in all, including a driver's knee airbag and side curtain airbags that cover both front and rear passengers.



Quality paintwork

All Volkswagen models undergo a process that begins with raw steel coated in an electrically charged bath – with more primer than typical 'dip' applications. It also includes environmentally friendly, hot wax body cavity flooding, PVC undercoating and top colour coats – plus clear coats for additional protection.

Safety.



Front Assist with City Emergency Braking

This system monitors the front of the Touran and warns of potential collisions at higher speeds. In situations of up to 30 km/h, it can brake the car completely to a halt to prevent an accident.



www.euroncap.com

Euro NCAP 2015 'Best in Class'

The European New Car Assessment Programme (Euro NCAP) ranked the Touran as the best compact MPV of 2015, awarding it the highest rating of five stars in the industry standard safety tests.







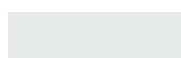
Technical data.

Touran 1.4 TSI (DSG)


Engine	
Engine type	4-cylinder, TSI petrol engine with 16 valves, turbocharger
Capacity L / cc	1.4 / 1,395
Power PS / rpm	150 / 5,000 – 6,000
Torque Nm / rpm	250 / 1,500 – 3,500
Emission category	Euro 6
Gearbox	7-speed dual clutch automatic gearbox (DSG)
Performance	
Top speed km/h	209
Acceleration 0 – 100 km/h	8.9 sec
Driven wheels	Front
Fuel consumption	
Urban L/100km	6.7
Extra-urban L/100km	5.0
Combined cycle L/100km	5.6
CO ₂ emissions g/km	129
Fuel capacity L	58
VES banding	B
Exterior dimensions	
Length / width / height mm	4,527 / 1,829 / 1,659
Wheelbase mm	2,791
Track front / rear mm	1,569 / 1,542
Wheel size	6.5J x 17"
Tyre size	215/55 R17
Turning circle m	11.5



Exterior colours.

			
Atlantic Blue Metallic	Caribbean Blue Metallic	Indium Grey Metallic	Reflex Silver Metallic
			
Titanium Beige Metallic	Deep Black Pearl	Pure White	

Upholstery colours.


Titanium Black

Leather type and colour is subject to availability. Volkswagen reserves the right to make changes to the design, specification, colour and information contained herein without notice.

Standard specifications.

	Touran TSI Comfortline	Touran TSI Comfortline (EQP)
Exterior equipment		
'Valllunga' Alloy wheels, 6.5J x 17", tyres 215/55 R17	●	●
Automatic headlight activation including 'Leaving Home' and 'Coming Home' functions	●	●
Heat-insulating glass windscreen and windows, green tinted on rear sides and rear glass windows	●	●
Electrically foldable, adjustable and heated exterior mirror with memory function	●	●
Silver anodised roof rails	●	●
Tilting and sliding panoramic sunroof	●	●
LED licence plate lighting	●	●
Halogen headlamps	●	-
LED headlamps with separate LED daytime running lights	-	●
Dynamic headlight range control with dynamic cornering lights	-	●
Rain sensor	●	●
Front fog lamps and cornering lamps	●	●
Rear fog lamp	●	●
Interior equipment		
'Air Care Climatronic' air-conditioning system with 3-zone temperature control and controls in the rear	●	●
Fresh air intake for passenger cabin with allergen filter	●	●
Front centre armrest with storage compartment and 2 aircon vents for rear passengers	●	●
Leather upholstery	●	●
Height-adjustable front seats with adjustable lumbar support	●	●
Start-Stop system with regenerative braking	●	●
Cruise control system with speed limiter	●	●
Multi-function display 'Plus'	●	●
Leather-covered 3-spoke multi-function steering wheel	●	●
Gearshift knob in leather	●	●
'New Brushed Design' decorative inserts for dashboard and front door trim panels	●	●
'Composition Media' radio with 8" TFT touchscreen display, CD player, SD memory card slot and 8 speakers	●	●
USB interface and Bluetooth connectivity	●	●
2 LED reading lights in front and rear	●	●
Folding tables on the back of front seats	●	●
Glove compartment with cooling function	●	●
Three individual seats in second row with middle armrest and two individual seats in third row with 'Easy Fold' function	●	●
Illuminated vanity mirrors in sun visors	●	●
Removable luggage compartment cover	●	●
Central locking system with radio remote control	●	-
Keyless Entry and Start-Stop System (KESSY) including 'Press & Drive' starting function	-	●
12-volt sockets in centre console, front centre armrest and luggage compartment	●	●

	Touran TSI Comfortline	Touran TSI Comfortline (EQP)
Safety equipment		
Airbags for driver and front passenger, with front passenger airbag deactivation and driver's side knee airbag	●	●
Curtain airbag system for front and rear passengers including side airbags at the front	●	●
Electronic Stabilisation Programme (ESP) including Anti-Slip Regulator (ASR)	●	●
Driver Steering Recommendation (DSR)	●	●
Electronically controlled Anti-Lock Braking System (ABS) and brake assistant	●	●
Electronic Differential Lock (EDL) and Engine Drag Torque Control (EDTC)	●	●
Safety-optimised front head restraints with longitudinal and height adjustments	●	●
Driving profile selection with ECO function	-	●
ISOFIX mounting points for securing 5 child seats on rear seats	●	●
3-point seat belts in front and rear, with front seat belt height adjustment	●	●
Seat belt pretensioners for front and second row seats	●	●
Warning signal and light for unfastened front seat belts and warning light for unfastened rear seat belts	●	●
Tyre pressure loss indicator	●	●
Anti-theft alarm system with interior monitoring, backup horn and towing protection	-	●
Front and rear disc brakes	●	●
Electromechanical parking brake with Auto Hold function	●	●
Electronic engine immobiliser	●	●
Rear view camera	●	●
Auto-dimming interior rear view mirror	●	●
Electromechanical speed-sensitive power steering	●	●
Rear reverse sensors	●	●
Extended and crash-active pedestrian protection, re-active hood	●	●
Front Assist with City Emergency Braking	-	●
Proactive occupant protection system	-	●

Aftersales.

Here at Volkswagen, you can be assured of our service quality.
We deliver as promised!



Express Friday.

Get standard 15,000 km and 30,000 km servicing done in under 3 hours*.



Service Appointment Promise.

Our promise to you – a service confirmation date within 2 working days*, or enjoy a complimentary vehicle pick-up and delivery service.



100% Genuine Parts.

Our service centres only use Volkswagen Genuine Parts® that promise guaranteed quality and optimal performance with a 2-year warranty.



Volkswagen Warranty

- Up to 5-year or 100,000 km warranty (whichever comes first)
- 24-hour Volkswagen Roadside Assistance
- 12-year body protection warranty*
- 5-year paintwork warranty

*Conditions apply. To find out more, visit www.vw.com.sg



VolkswagenSG



VolkswagenSG



Volkswagen Life

Volkswagen Centre Singapore

247 Alexandra Road
Singapore 159934
Tel: 6474 8288

Services

Aftersales service hotline: 6305 7299
Aftersales service fax: 6474 3643
24-Hr Roadside Assistance: 6333 8800

Service enquiry email

service@vw.com.sg

www.vw.com.sg

Subject to changes without notice.
Printed in Singapore.
Issue: January 2020



Scan to find out more about the Touran.