



Global success.
Made in Thailand.

ALL-NEW RANGER



facebook.com/FordThailand

ford.co.th



Go Further



The Next Generation Of Truck

All-New Ranger is a completely new animal, designed and engineered by world's top engineers. A truck built with no compromise, it was tested in the toughest of climates and terrains across 5 continents to ensure its superior durability. With an all-new interior, equipped with latest technologies, All-New Ranger sets a new standard in its sector, offering impressive responsiveness, stability and total comfort.

Ford brought together engineering experts from around the world to design and develop the toughest pick up with outstanding looks, robust frame, impressive chassis, and safety with fuel economy in mind. The result is clear, all-new Ranger is ready for anything.

All-New Ranger Double Cab

Not only delivers impressive performance but also offers more practical stowage than any competitor. With 20 storage compartments, ample cabin space, getting in and out of Ranger is easier than ever for rear-seat passengers.

All-New Ranger Open Cab

The cabin and load box of Ranger has been stretched to provide spaciousness and comfort.

All-New Ranger Standard Cab

Let the all-new body structure handle all of the hard work with its huge payload capacity and impressive load box volume.

All-New Ranger is built for any challenge.

Conquer Every Challenge In Style

Ford has gone to great lengths to ensure that the All-New Ranger is not only a capable and good-looking vehicle, but also engineered with the latest smart technologies for connectivity and entertainment such as Voice Control and Bluetooth, the All-New Ranger is one of the smartest trucks in its class.



DOUBLECAB 2.2L WILDTRAK



OPENCAB 2.2L WILDTRAK



Special design interior sporty style



Cruise Control



Voice Control and Bluetooth connectivity



AUX and USB connectivity



Cooled centre console

Touch Truck Driven By Smart Technology

The All-New Ranger is engineered to make every journey work or leisure more comfortable with smart technology, also help keep you and your passenger safe with Front airbags and Anti-lock Braking System (ABS) and 20 storage compartments.



1. Rain Sensing Wipers
2. Glove box that fits a laptop
3. Auto Headlamps
4. Ranger 2.2L XLT



DOUBLECAB 2.2L XLT

Engineered To Exceed Your Expectations

All-New Ranger Opencab with all-new body design features rear doors that open at a 90° angle, giving you effortless access to its spacious and cleverly packaged interior.

All-New Ranger Standardcab, the best heavy duty truck that comes with a strong, rigid frame from front to rear bumper. The robust chassis is ready for any payload with its impressive load box volume of up to 1.82 cu.m. (the widest load box in its class), built to get any job done.



OPENCAB 2.2L XLS



1



2

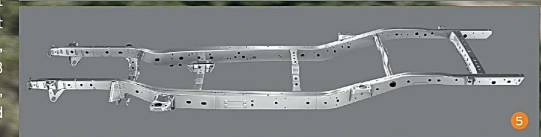
3



STANDARD CAB 2.5L XL



4



5

1. Rear doors that open at a 90° angle
2. 4-way adjustable Driver's seat
3. Rear storage compartment
4. Bigger load box 1560 x 2317 x 511 mm (W x L x H), class-leading volume: 1.82 m³
5. Bigger and stronger Chassis as a result of high strength steel, and new suspension design to support the increased payload and towing capacity. A more rigid frame also delivers a smoother ride.



Stylish Interior Equipped With Advanced Technology

All-New Ranger has everything you expect in a truck and then takes it one step further with the latest smart Dual Zone Electronic Climate Control and leads the way on safety too, with an impressive Rear View Camera which displays the video image in the Rear View Mirror.



Dual Zone Electronic Climate Control



Rear view camera with Rear view mirror display

More Power And Fuel Economy

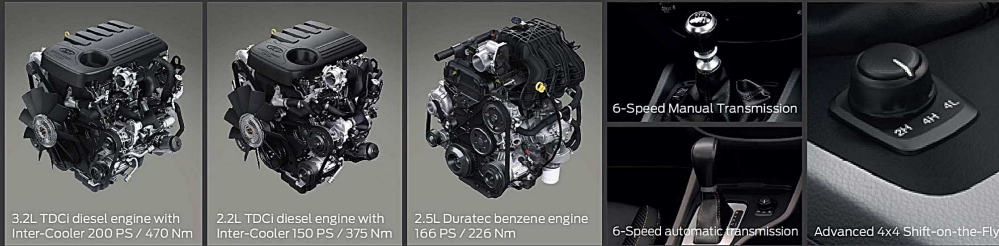
Powering the All-New Ranger is the new generation of TDCi Duratorq engines, the most tough and leading-edge engine in its class. Not only durable but also delivers powerful performance and fuel economy (1500 km on one tank*) with increase horse power and torque, the result is best-in-class towing and outstanding payload capacity.



DOUBLECAB 3.2L WILDTRAK

A powertrain that delivers, whenever you need it.

- **The powerful Duratorq 3.2L TDCi VG Turbo Diesel engine with Inter-Cooler** delivers 147kW power (200PS) and 470Nm torque. It uses a Variable Geometry Turbo-charger, which enables lower end torque capability to improve launch and drivability to optimize fuel efficiency.
- **The economical Duratorq 2.2L TDCi VG Turbo Diesel engine with Inter-Cooler** delivers 110kW power (150PS) and 330Nm torque.
- **The economical Duratorq 2.2L TDCi Turbo Diesel engine with Inter-Cooler** delivers 92kW power (125PS) and 375Nm torque.
- **The new Duratec 2.5L Benzene engine** delivers 122kW (166PS) and 226Nm torque. It uses variable cam technology for enhanced performance, fuel economy and to help minimize emissions. (E-20 compatibility)



3.2L TDCi diesel engine with Inter-Cooler 200 PS / 470 Nm

2.2L TDCi diesel engine with Inter-Cooler 150 PS / 375 Nm

2.5L Duratec benzene engine 166 PS / 226 Nm

6-Speed Manual Transmission

6-Speed automatic transmission

Advanced 4x4 Shift-on-the-Fly

6-Speed Manual Transmission

For the first time, the new Ranger is installed with 6-Speed Manual Transmission to provide increased torque for greater towing capability, increased fuel saving by 15% while driving in highest gear (6th gear) and reduced noise and vibration.

6-Speed Automatic Transmission

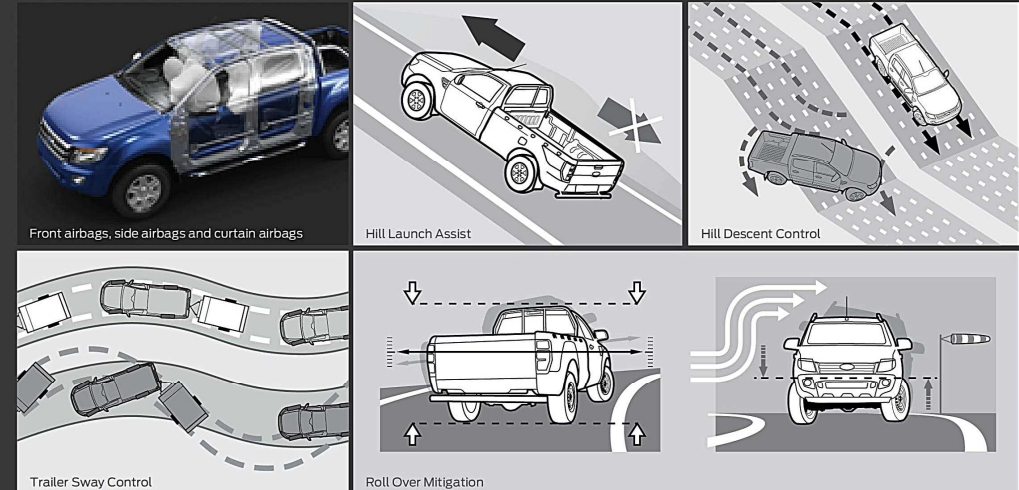
The highly advanced 6-speed sequential automatic transmission will change the definition of driving forever with fuel economy of a manual, increase performance and smoothness while shifting gears, plus greater towing capability. 6-Speed Automatic Transmission features sport mode with Brake Shift interlock and Manual Override in which the Driver Recognition tailors its responses to individual driving styles. The new intelligent transmission also includes:

- **Grade Control Logic:** When driving downhill, with sufficient brake pedal pressure, the transmission will downshift to provide increased engine braking.
- **Brake Support Downshift:** Enables early downshifting during heavy braking, to provide engine braking and to optimize gear selection for throttle re-application response.
- **Gear Hold Around Corner:** the system will prevent gear shifting when swiftly turning corners.

* Test according to actual driving by journalists from Chiangrai to Krabi, Fuel tank capacity at 80L, average speed at 60 km/hr, with turned-on air conditioning in Doublecab 2.2L MT model.

Safety Made Smart

Ford has gone to great lengths to ensure that the All-New Ranger is not only a capable and good-looking vehicle, but also engineered for safety with Electronic Stability Program (ESP) program aids vehicle control and includes: Traction Control, Trailer Sway Control, Hill Descent Control, Hill Launch Assist, and Roll-Over Mitigation providing stability and greater control when towing a trailer on- and off-road. The All-New Ranger is engineered to help keep you and your passenger safe with Front airbags, side airbags and curtain airbags, also Anti-lock Braking System (ABS) and Emergency Brake Assist (EBA)



Front airbags, side airbags and curtain airbags

Hill Launch Assist

Hill Descent Control

Trailer Sway Control

Roll Over Mitigation

Advanced 4x4 Shift-on-the-Fly

Leading edge technology of the 4-wheel-drive system in New Ranger, the advanced 4x4 Shift-on-the-Fly allows you to shift from 2-wheel-drive to 4-wheel-drive without stopping at speed up to 120 km/h.

Exterior Colors



SPARKLING GOLD



METROPOLITAN GREY



BLACK MICA



HIGHLIGHT SILVER



COOL WHITE



GUNMETAL BLUE



COPPER RED



AURORA BLUE



TRUE RED



CHILLI ORANGE

Wheel Style And Size



Wheel: 16" Steel
(XL model)



Wheel: 16" Alloy
(XLS, XLT model)



Wheel: 16" Alloy
(XLS Hi-Rider model)

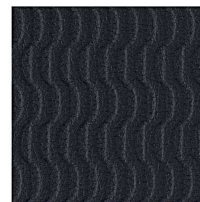


Wheel: 17" Alloy
(4x4 XLT Hi-Rider
and 2.2L WILDTRAK)

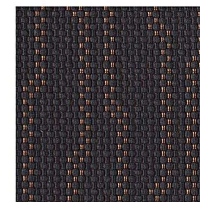


Wheel: 18" Alloy
(3.2L WILDTRAK)

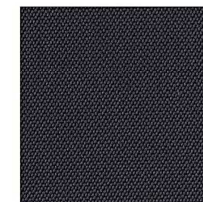
Interior Trims



STD XL
(Standard Cap)



XL and XLS



XLT



WILDTRAK

EXTERIOR COLORS	XL	XLS	XLT	WILDTRAK	LOWER BUMPER COLOR (WILDTRAK ONLY)
Cool White	✓	✓	✓	✓	Cool White
Highlight Silver	✓	✓	✓	✓	Highlight Silver
Metropolitan Grey	✓	✓	✓	✓	Metropolitan Grey
Black Mica	-	✓	✓	✓	Super Alloy
Sparkling Gold	-	✓	✓	-	-
Gunmetal Blue	-	✓	✓	-	-
True Red	-	-	✓	-	-
Aurora Blue	-	-	✓	-	-
Copper Red	-	-	✓	-	-
Chilli Orange	-	-	-	✓	Super Alloy

Specification

Model	Standard Cab		Open Cab			Open Cab Hi-rider			Double Cab	
	2.5 4x2 XL 5MT	2.5 4x2 XL 5MT	2.2 4x2 XLS 6MT	2.2 4x2 XLT 6MT	2.2 4x2 XLS 6MT	2.2 4x2 XLT 6MT	2.2 4x2 Wildtrak 6MT	2.2 4x2 XLT 6MT		
Dimension										
Exterior Dimension : width x length x height	mm	1850 x 5274 x 1705	1850 x 5359 x 1706			1850 x 5359 x 1804			1850 x 5359 x 1716	
Wheelbase	mm		3220			3220			3220	
Front track / Rear track	mm		1590			1590			1590	
Ground clearance	mm		201			232			201	
Box : width x length x height	mm	1560 x 2317 x 511	1560 x 1847 x 511			1560 x 1847 x 511			1560 x 1549 x 511	
Engine										
Engine model	Duratec 2.5L VCT		Duratorq 2.2L							
Engine type	In-line 4-cylinder, 16V									
Displacement	cc	2488			2198			2198		
Bore x stroke	mm	89 x 100			86 x 94.6			86 x 94.6		
Compression ratio	mm	9.7:1			15.7:1			15.7:1		
Maximum power	Kw(PS)/rpm	166 (122) / 3500		125 (92) / 3700	150 (110) / 3700	125 (92) / 3700	330/1750-2300	150 (110) / 3700		
Maximum torque	Nm/rpm	226 / 4500		330/1750-2300	375 / 1500-2500	330/1750-2300	375 / 1500-2500	375 / 1500-2500		
Fuel management system	Sequential Multi-Port Injection									
Fuel tank capacity	L	80								
Transmission	5-Speed Manual			6-Speed Manual						
Chassis										
Front suspension	Double Wishbone with Coil Spring									
Rear suspension	Leaf Springs									
Front brake	Ventilated Discs									
Rear brake	Drum									
Steering system	Rack and Pinion with Power Assist									
Wheels	Steel wheel 16"			Alloy wheel 16"			Alloy wheel 17"		Alloy wheel 16"	
Tyres	215/70 R16			255/70 R16		265/65 R17		215/70 R16		

Standard Equipment

Model	Standard Cab		Open Cab			Open Cab Hi-rider			Double Cab
	2.5 4x2 XL 5MT	2.5 4x2 XL 5MT	2.2 4x2 XLS 6MT	2.2 4x2 XLT 6MT	2.2 4x2 XLS 6MT	2.2 4x2 XLT 6MT	2.2 4x2 Wildtrak 6MT	2.2 4x2 XLT 6MT	
Exterior									
Front Grille	Black	Black	Silver	Chrome	Silver	Chrome	Wildtrak	Chrome	
Door Handle	Black	Black	Black	Chrome	Black	Chrome	Black	Chrome	
Front Bumper-Body Color	Black	•	•	•	•	•	•	•	
Rear Bumper	-	-	Body Color	Chrome	Body Color	Chrome	Wildtrak	Chrome	
Side Steps	-	-	-	-	•	•	•	-	
Sports Bar and Roof Rails	-	-	-	-	-	-	•	-	
Box Rails	-	-	-	-	-	-	•	-	
Auto Headlamps	-	-	-	•	-	•	•	•	
Fog Lamps	-	-	•	•	•	•	•	•	
Side Mirror	Black	Black	Body Color	Chrome	Body Color	Chrome	Wildtrak	Chrome	
Power Adjustable & Foldable Side Mirrors with Turning Indicator	-	-	Power Adjustable	•	Power Adjustable	•	•	•	
Puddle Lamps	-	-	-	-	-	-	•	-	
Bedliner & 12V socket on bedliner	-	-	-	-	-	-	•	-	
Interior									
Rain Sensing Wipers	-	-	-	•	-	•	•	•	
Dome Interior Lamp	•	•	•	•	•	•	•	•	
Steering Wheel & Gear Shift Knob	PU	PU	PU	Leather	PU	Leather	Wildtrak	Leather	
Audio Control on Steering Wheel	-	-	-	-	-	-	•	-	
Cruise Control	-	-	-	-	-	-	•	-	
Air Conditioning Manual A/C	•	•	•	•	•	•	•	•	
Driver Sun Visor with Strap	•	•	•	•	•	•	•	•	
Passenger Sun Visor with Mirror	-	-	•	•	•	•	•	•	
Power Front Windows with Driver's 1-touch Up/Down	-	-	•	•	•	•	•	Power Rear Windows	
Remote Flip Key	-	-	•	•	•	•	•	•	
Interior Door Handle Chrome	-	-	-	•	-	•	•	•	
Seat and Door Panel	Vinyl & Plastic	Fabric	Fabric	Premium Fabric	Fabric	Premium Fabric	Wildtrak	Premium Fabric	
4-way Manual Adjustment Driver Seat	2-Way	2-Way	•	•	•	•	•	•	
Reat Seat with Head Restraints	-	-	-	-	-	-	-	•	
Floor Mat - Driver only	-	•	•	•	•	•	•	•	
Wildtrak (Floor Mats - Wildtrak)	-	-	-	-	-	-	•	-	
Overhead Console	-	-	-	•	-	•	•	•	
Center Console with Cupholders	•	•	•	•	•	•	•	•	
Audio									
FM/AM Stereo Radio, Single CD/MP3 Player	Only Radio	•	•	•	•	•	•	•	
AUX (AUX-in)	•	•	•	•	•	•	AUX & USB	•	
Bluetooth with Voice Control	-	-	-	-	-	-	-	-	
Speakers	2	2	6	6	6	6	6	6	
Large Screen Color Matrix Multi-function Display	-	-	•	•	•	•	•	•	
Safety									
ABS with EBD	-	-	•	•	•	•	•	•	
Rear Window Defrost	-	-	•	•	•	•	•	•	
Front Driver and Passenger Airbags	-	-	-	•	-	•	•	•	
Rear Seatbelt	Middle of front seat	-	-	-	-	-	-	•	
Limited Slip Rear Differential	-	-	-	-	-	-	•	-	

3.2L Wildtrak Features, plus :

+ Electrochromatic Rear View Mirror	+ ESP with Traction Control System	+ Rear Parking Sensors
+ Rear View Camera	+ Alarm System	+ Front Side Airbags and Side Curtain Airbags
+ Beltminder	+ Cooled Console	

Remark : • = Standard , - = Not available

Specification

Model	Double Cab Hi-rider				Double Cab 4x4			
	2.2L 4x2 XLT 6MT	2.2L 4x2 XLT 6AT	2.2L 4x2 Wildtrak 6MT	2.2L 4x2 Wildtrak 6AT	2.2L 4x4 XLT 6MT	2.2L 4x4 Wildtrak 6AT	3.2L 4x4 Wildtrak 6AT	
Dimension								
Exterior Dimension : width x length x height	mm	1850 x 5359 x 1815						
Wheelbase	mm	3220						
Front track / Rear track	mm	1590			1560			
Ground clearance	mm	232						
Box : width x length x height	mm	1560 x 1549 x 511						
Engine								
Engine model	Duratec 2.2L						Duratorq 3.2L	
Engine type	In-line 4-cylinder, 16V							
Displacement	cc	2198						In-line 5-cylinder, 20V
Bore x stroke	mm	86 x 94.6						3198
Compression ratio	mm	86 x 94.6						89.9 x 100.7
Maximum power	Kw(PS)/rpm	150 (110) / 3700						200 (147) / 3000
Maximum torque	Nm/rpm	375 / 1500-2500						470 / 1750-2500
Fuel management system	Turbocharged Commonrail Injection							
Fuel tank capacity	L	80						
Transmission	6-Speed Manual	6-Speed Automatic	6-Speed Manual	6-Speed Automatic	6-Speed Manual	6-Speed Automatic		
Chassis								
Front suspension	Double Wishbone with Coil Spring							
Rear suspension	Leaf Springs							
Front brake	Ventilated Discs							
Rear brake	Drum							
Steering system	Rack and Pinion with Power Assist							
Wheels	Alloy wheel 17"						Alloy wheel 18"	
Tyres	265/65 R17						265/60 R18	

Standard Equipment

Model	Double Cab Hi-rider				Double Cab 4x4		
	2.2L 4x2 XLT 6MT	2.2L 4x2 XLT 6AT	2.2L 4x2 Wildtrak 6MT	2.2L 4x2 Wildtrak 6AT	2.2L 4x4 XLT 6MT	2.2L 4x4 Wildtrak 6AT	3.2L 4x4 Wildtrak 6AT
Exterior							
Front Grille	Chrome	Chrome	Wildtrak	Wildtrak	Chrome	Wildtrak	Black
Door Handle	Chrome	Chrome	Black	Black	Chrome	Black	Black
Front Bumper-Body Color	•	•	•	•	•	•	•
Rear Bumper	Chrome	Chrome	Wildtrak	Wildtrak	Chrome	Wildtrak	Wildtrak
Side Steps	•	•	•	•	•	•	•
Sports Bar and Roof Rails	-	-	•	•	-	•	•
Box Rails	-	-	•	•	-	•	•
Auto Headlamps	•	•	•	•	•	•	•
Fog Lamps	•	•	•	•	•	•	•
Side Mirror	Chrome	Chrome	Wildtrak	Wildtrak	Chrome	Wildtrak	Wildtrak
Power Adjustable & Foldable Side Mirrors with Turning Indicator	•	•	•	•	•	•	•
Puddle Lamps	-	-	-	-	-	•	•
Bedliner & 12V socket on bedliner	-	-	•	•	-	-	•
Interior							
Rain Sensing Wipers	•	•	•	•	•	•	•
Dome Interior Lamp	•	•	•	•	•	•	•
Steering Wheel & Gear Shift Knob	Leather	Leather	Wildtrak	Wildtrak	Leather	Wildtrak	Wildtrak
Audio Control on Steering Wheel	-	-	•	•	-	•	•
Cruise Control	•	-	•	•	-	•	•
Air Conditioning Manual A/C	•	•	•	•	•	•	Dual Zone Climate Control
Driver Sun Visor with Strap	•	•	•	•	•	•	•
Passenger Sun Visor with Mirror	•	•	•	•	•	•	•
Power Front Windows with Driver's 1-touch Up/Down	Power Rear Windows			Power Rear Windows			
Remote Flip Key	•	•	•	•	•	•	•
Interior Door Handle Chrome	•	•	•	•	•	•	•
Seat and Door Panel	Premium Fabric	Premium Fabric	Wildtrak	Wildtrak	Premium Fabric	Wildtrak	Wildtrak
4-way Manual Adjustment Driver Seat	•	•	•	•	•	•	8-Way
Reat Seat with Head Restraints	•	•	•	•	•	•	•
Floor Mat - Driver only	•	•	-	-	•	-	-
Wildtrak (Floor Mats - Wildtrak)	-	-	•	•	-	•	•
Overhead Console	•	•	•	•	•	•	•
Center Console with Cupholders	•	•	•	•	•	•	•
Audio							
FM/AM Stereo Radio, Single CD/MP3 Player	•	•	•	•	•	•	•
AUX (AUX-in)	•	•	AUX & USB	AUX & USB	•	AUX & USB	AUX & USB
Bluetooth with Voice Control	-	-	-	-	-	-	-
Speakers	6	6	6	6	6	6	6
Large Screen Color Matrix Multi-function Display	•	•	•	•	•	•	•
Safety							
ABS with EBD	•	•	•	•	•	•	•
Rear Window Defrost	•	•	•	•	•	•	•
Front Driver and Passenger Airbags	•	•	•	•	•	•	•
Rear Seatbelt	•	•	•	•	•	•	•
Limited Slip Rear Differential	-	-	•	•	-	•	Rear Locking Differential

Best-in-class Water Wading Of 80 Cm.



DOUBLECAB 2.2L XLT
Hi-rider / 4x4.

- 1. Nudge Bar**
This nudge bar helps protect the front end of the vehicle. Tested to Ford's safety standards, not affected to frontal airbag deployment in case of collision.
- 2. Headlamp guard**
Enhances the sport appearance, helps protect headlamp from gravel during driving. Not affected to direct of headlight beam.
- 3. Bonnet Protector**
Helps deflect dirt and bugs from bonnet. Aerodynamic design, reduced wind noise.
- 4. Weather shield**
Helps deflect rain while opening window to let air flow.
- 5. Snorkel**
A higher air intake position provides cooler and cleaner air to the engine and helps assist with water crossings over 80 cm.
- 6. Underrail bedliner**
Moulded for durability, protects body and paint from scratches, enhances exterior appearance.
- 7. Stainless sport bar**
Enhances the sporty exterior of the vehicle along with high mounted stop lamp.
- 8. 18" Alloy Wheel**
Enhances the sport exterior of the vehicle. Meets Ford's stringent engineering and safety standards. Recommend using with 265/60R18 tyre.
- 9. Carpet mats**
These stylish hardwearing mats are easy to remove and clean. Anchor points fix the driver's mat to help prevent movement.



Accessories

Exterior Styling	XL	XLS	XLT	WILDTRAK
1. Stainless Nudge Bar	A	A	A	A
2. Headlamp Guards	A	A	A	A
3. Snorkel (TDCI engine only)	A	A	A	A
4. Bonnet Protector	A	A	A	A
5. Weather shield	A	A	A	A
6. Chrome outer mirror cover	-	-	S	A
7. Front mud flap	A	A*	S	S
8. Roof rack	A	A	A	-
9. Side Steps Stainless Steel (Hi-Rider and 4x4 model only)	A	S	S	A
10. Grey Side Steps (Hi-Rider and 4x4 model only)	A	A	A	S
11. 18" Alloy Wheels (Hi-Rider and 4x4 model only)	A	A	A	A (2.2L)
12. Stainless sport bar with 3rd brake light	A	A	A	-
13. Underrail bedliner	A	A	A	S

Exterior Styling	XL	XLS	XLT	WILDTRAK
14. Bed rail cover (Double Cab only)	A	A	A	-
15. Spare wheel lock	A	A	A	A
16. Towing bar kit (Hi-Rider and 4x4 model only)	A	A	A	A
17. Silver license plate cover	A	A	A	A
18. Car cover	A	A	A	A
Interior styling and audio connectivity	XL	XLS	XLT	WILDTRAK
19. Carpet floor mat	A	A	A	S
20. Side steps Stainless Steel	A	A	A	-
21. Gear Knob – Leather (6-Speed M/T)	A	A	S	-
22. iPod Integration Cable	-	-	-	A
23. Aux Audio Plug in cable	A	A	A	A
24. Driver's grab handle	A	A	A	A
25. Silver Door handles –chrome	A	A	S	A

A = Accessory that can be added at any time. S = Standard. - = Not available.

* Except Hi-Rider and 4x4 model



Quality

We design and build your Ford to feel as good after many years of service as it did the day you picked it up. And to drive just as beautifully, too.



Green

Using advanced technology, we're committed to creating vehicles with improved fuel economy, reduced CO2 emissions and a lower overall cost of ownership.



Safe

Ford's Intelligent Protection System uses sophisticated technology designed to help prevent an accident and, if one should happen, to help protect you.



Smart

Vehicles with smart, intuitive technologies designed to connect you to your world and many clever solutions from Ford that make life a little easier.

After-Sales Services



9 months/15,000km service intervals, designed to minimize the maintenance cost and the number of times you need to visit your local Ford Dealer to attend to your logbook servicing needs.



For three years or 100,000km, whichever comes first, your Ford is covered



Our commitment to your complete satisfaction plays a major role in everything we do. That is why we provide myFord Roadside Assistance for all Ford models. Wherever and whenever you need emergency roadside assistance, help is available 24 hours a day, 365 days a year. If your vehicle breaks down and cannot be repaired, we will organise to transport your vehicle to the nearest Ford Dealer or approved service centre for repair.



15% Savings on maintenance service at scheduled intervals. With Scheduled Service Plan you have no worries over price fluctuation of lubricants, service, spare parts, in the future.



It's reassuring to know that the original body of your gleaming new Ford is guaranteed against perforation corrosion for the first five years or 140,000kilometers of its life. If perforation corrosion occurs, we'll fix it for free.



The first class insurance service by ford, together with TISCO and various leading insurance companies. Every ford vehicle protected by Ford Ensure is entitles to dependable, high-standard body paint and body repair services from any ford-approved bodyshop dealers, plus many special privileges.



For 24 Hours part delivery guarantee program, part will be delivered in next operating day subject to condition and internal procedure of the company and Ford dealers. For more information visit www.ford.co.th

Ford Call Center Tel. 0-2686-5899 (Bangkok) or Tel. 1-800-225-449 (toll-free from upcountry).

Remark : Ford reserves the right to change any specifications, sales terms and conditions, and standard equipments without prior notice. Standard equipments installed in each model may differ. Certain pictures demonstrate optional equipments. Color examples may differ from actual models due to printing process. Please read the owner's manual thoroughly.

Contact Ford Dealers