

The BMW 1 Series  
Sports Hatch

[www.bmw.co.uk](http://www.bmw.co.uk)  
[www.bmw.ie](http://www.bmw.ie)



The Ultimate  
Driving Machine



# THE BMW 1 SERIES SPORTS HATCH.

**DOUBLE THE JOY.**

**BMW EfficientDynamics**  
Less emissions. More driving pleasure.



official partner of the  
Olympic and Paralympic Games

## Contents

### The BMW 1 Series

- 04 | 11 Exterior BMW 1 Series 3-door
- 12 | 15 Interior BMW 1 Series 3-door
- 16 | 21 Exterior BMW 1 Series 5-door
- 22 | 25 Interior BMW 1 Series 5-door

### Technology

- 26 | 27 BMW EfficientDynamics
- 28 | 31 Engines
- 32 | 33 Chassis | Safety
- 34 | 35 BMW ConnectedDrive
- 36 | 37 Safety

### Equipment

- 38 | 41 Colours
- 42 | 43 Combination examples
- 44 | 53 Standard | Optional equipment
- 54 | 55 M Sport models
- 56 | 57 BMW Performance | Safety illustrations
- 58 | 61 Standard equipment
- 62 | 63 Technical data

64 | 65 London 2012 Olympic and Paralympic Games

66 | 67 BMW Service | BMW Financial Services



#### BMW 120i\* 3-door

##### Model shown:

Engine: Four-cylinder in-line petrol engine  
Performance: 170hp (125kW)  
Wheels: 18" light alloy V-spoke style 217  
Exterior colour: Alpine White, non-metallic  
Upholstery: Orange / Black Pearlpoint cloth / leather  
Interior trim: Brushed Aluminium with accent line

For information on fuel consumption and CO<sub>2</sub> emissions, see pages 62 | 63.



#### BMW 120i\* 5-door

##### Model shown:

Engine: Four-cylinder in-line petrol engine  
Performance: 170hp (125kW)  
Wheels: 17" light alloy V-spoke style 141  
Exterior colour: Black Sapphire, metallic  
Upholstery: Beige Boston leather  
Interior trim: Black High-gloss

For information on fuel consumption and CO<sub>2</sub> emissions, see pages 62 | 63.

\* 120i Sports Hatch not available in the UK or Republic of Ireland.



BMW UK on Facebook  
[www.facebook.com/bmwuk](http://www.facebook.com/bmwuk)

**BMW EfficientDynamics**  
Less emissions. More driving pleasure.



Driving pleasure knows no end, but it does have a beginning: the BMW 1 Series 3-door. The car's design signals the promise of an engaging, dynamic driving experience. Even after a single glance, you intuitively know it. And that visual promise is fulfilled on the road. It takes only a few metres to appreciate the unique dynamic ability of the BMW 1 Series, the first car in its class with rear-wheel drive which marks it out as a true BMW instantly. The driving experience is enhanced further by the application of BMW's EfficientDynamics philosophy, which targets improved efficiency. The BMW 1 Series 3-door is available with a choice of two efficient four-cylinder in-line petrol engines with high-precision direct injection and four economical diesels, all of which are fitted with a Diesel Particulate Filter as standard. Whichever engine you choose, its power is delivered with crisp, smooth immediacy that sets ... ►

**FOLLOW YOUR INSTINCTS.  
THE BMW 1 SERIES 3-DOOR.**

- ... the pulse racing. At the same time, though, the BMW 1 Series provides a fine balance of handling, control and everyday comfort. One reason for this is the near-perfect 50:50 weight distribution – half over the front axle, half over the rear. This improves the enjoyment of driving, which is ... ►



**COMFORT AND CONTROL.  
A GAME OF TWO HALVES.**

## THE BALANCE OF POWER. PICTURE THIS.

► ... something the BMW 1 Series 3-door offers in abundance. The car's design says it all. The long wheelbase and short overhangs create an athletic stance, where the visual power is shifted towards the rear, over the driving wheels, by the converging lines of the elegant, frameless windows. Along the side, taut, muscular surfaces blend seamlessly into the strong, confident front end. The 3-door's poised, dynamic looks invite you to drive it. This is one invitation that's ... ►



► ... hard to resist. You'll be glad you accepted, as the BMW 1 Series 3-door represents a technical leap forward in a wide range of different areas, including safety. The optional Adaptive Headlights, for instance, automatically adjust the direction of their beam to the twists of the road ahead. So as soon as you start to turn into a corner at night, the headlight beam immediately swivels to illuminate the bend. But if you still didn't spot those pieces of glass on the road, don't worry. Every tyre on the BMW 1 Series doubles as a spare because they employ run-flat technology (run-flat tyres available as a cost-option on 16" tyres). So not even a puncture will prevent you from making it to the nearest BMW Dealer, or intrude unduly on the mood inside the cabin, where ... ►

**GET TO GRIPS WITH INNOVATION  
THAT'S WELL AHEAD OF THE CURVE.**



## PLUG IN AND PLAY YOUR MP3 COLLECTION.

► ... your favourite music adds to the enjoyment of the drive. The BMW 1 Series 3-door is available with an optional USB audio interface for your MP3 player or USB stick. The track titles appear on the display of the BMW Professional radio with single CD player or in the Control Display of the Navigation system, depending on the equipment specified. For added convenience, you can call up songs instantly using the radio buttons or the iDrive Controller. This thoughtful ergonomic approach is typical of what you can expect from the BMW 1 Series. Every detail matters. That's why ... ►



► ... the doors on the BMW 1 Series 3-door have frameless windows. The clean-lined glass area enhances the dynamic appeal of the car's athletic stance. The impression continues when you open the door and step inside. Ergonomic seats offer unbeatable support and the intelligent use of space is immediately apparent. Five seats are fitted

as standard, with four seats (shown here) available as a no-cost option. In addition, the clutter of everyday life can be contained neatly within a multitude of storage spaces and compartments. There is one thing you won't want to contain in the BMW 1 Series 3-door: your driving enjoyment.

**A DRAMATIC NEW OUTLOOK ON DRIVING PLEASURE.**

## LIFE IS TOO SHORT FOR COMPROMISES. THE BMW 1 SERIES 5-DOOR.

You won't be alone in appreciating the elegance and agility of the BMW 1 Series 5-door. Anyone who follows you along a twisting road or an open straight is also sure to recognise it. You, meanwhile, will be enjoying immediate responses of a different kind – from a driving experience without compromise. In fact, the lack of compromise is apparent, even when the car is parked. From every angle, it looks elegant, dynamic and confident. Yet for all of its visual athleticism, the versatile use of space in the cabin remains undiluted. The five seats, including the folding rear seats, underline the importance of the template used to create the BMW 1 Series 5-door: your needs and expectations. The styling sets expectations, too. From the long bonnet to the taut, muscular rear, it leaves no doubt that car and road are about to become one in that inimitable, rear-wheel drive, BMW manner. So while the dynamic edge remains sharp at standstill, you'll prefer to experience it ... ►





**APPEALING INTELLIGENCE EVEN WHEN THE ENGINE'S OFF. INTRODUCING BMW EFFICIENT DYNAMICS.**

► ... on the road. After all, you're assured of unrivalled driving enjoyment in almost any situation because of the optimum stability and traction provided by the Dynamic Stability Control (DSC). When understeer or oversteer occurs, the sensitive DSC sensors register it within a fraction of a second and employ the brake and engine management systems to maintain a steady, sure and smooth course. You'll also benefit from the dynamic ability of the intelligent energy management employed by the BMW 1 Series engines. Auto Start-Stop switches the engine off when power isn't needed, such as at traffic lights or in a tailback. The engine then restarts instantly with a light press of the clutch pedal. Brake Energy Regeneration recycles surplus energy generated when the engine is in overrun – for instance, as you approach a junction. Combined with high-precision direct injection, these two innovations help to reduce fuel consumption significantly while also increasing performance. It's the best of both worlds, and an intrinsic part of BMW's EfficientDynamics philosophy.





A GOOD CONTROL CONCEPT  
STANDS OUT BY BLENDING IN.

Effortless control. That's the aim of the optional iDrive system, which allows you to operate multiple functions using a Controller located on the centre console. It's an intuitive system where the information you need appears in front of you on the display of the BMW Professional Multimedia Navigation system (iDrive Controller also features on the optional BMW Business Advanced Navigation system). You can also programme up to eight favourite buttons with the functions you use most frequently, such as your preferred radio station, the telephone number you dial most often or the navigation destination most used. With such user-friendliness at your fingertips, all you need to do is ... ►



## NOT BEING AT THE WHEEL HAS SOME COMPENSATION.

► ... sit back and enjoy the drive – which is easy to do from any seat, including the rear, where passengers can enjoy the dynamic ability of the BMW 1 Series in comfort. The ergonomically designed seats offer excellent support, yet they also form part of the interior's versatile use of space. The 60:40 split-folding rear seats, for instance, can be folded to create a virtually flat load floor. How you use the interior space

is up to you, of course, and an extensive range of high-quality trims and accessories allows you to personalise the environment. In fact, whether you opt for the 3-door or 5-door version of the BMW 1 Series, there's just one thing missing from the experience of owning and driving it: compromise.

## BMW EFFICIENT DYNAMICS – GIVES MUCH MORE THAN IT TAKES.

BMW was one of the first manufacturers to pursue the goal of efficient driving technologies, as a part of our multiple award-winning sustainability strategy. BMW EfficientDynamics represents the most comprehensive package of innovative technologies for reducing fuel consumption and emissions – while simultaneously increasing driving dynamics – that is currently in standard production. With it, BMW has been able to reduce the CO<sub>2</sub> emissions of its entire fleet by approximately 30% since 1995. 31 models produce less than 140g of CO<sub>2</sub> per kilometre, and BMW has already rolled out more than two million vehicles equipped with EfficientDynamics. BMW intends to achieve a further 25% reduction by 2020.

### BMW EfficientDynamics – Takes so little, yet gives so much.

Through tireless research, BMW is producing innovations for the energy efficient mobility of the future. The BMW 1 Series Sports Hatch, like every BMW, comes with the comprehensive, multi-award-winning technology package BMW EfficientDynamics as standard. BMW EfficientDynamics technologies interact perfectly to reduce fuel consumption and CO<sub>2</sub> emissions while maximising performance and dynamism. Less fuel, more driving pleasure – a seeming paradox that BMW has resolved once and for all. For the benefit of the environment and the enjoyment of the driver.



**Vision becomes reality: BMW Vision EfficientDynamics.** In 2014 BMW plans to present a 2+2 sports car that will feature ground-breaking plug-in-hybrid technology combining sports-car performance with small-car consumption. This will highlight BMW's position as the world's leading manufacturer of exceptionally sporty yet incomparably efficient vehicles. The BMW Vision EfficientDynamics test model has a latest-generation fully hybrid system producing 328hp (241kW). A three-cylinder turbo diesel engine (120kW, 290Nm torque) combines with a hybrid synchronous engine on the front axle (225Nm) and a fully hybrid drive system on the rear axle (210Nm), giving the vehicle a range of up to 435 miles. This sports car's dynamism to fuel consumption ratio is without equal.

[www.bmw.co.uk/EfficientDynamics](http://www.bmw.co.uk/EfficientDynamics)

## BMW EFFICIENT DYNAMICS TECHNOLOGY HIGHLIGHTS ON THE BMW 1 SERIES SPORTS HATCH:



### Auto Start-Stop.

Switches the engine off without affecting other functions whenever the car comes to a rest, at traffic lights for example, saving fuel and reducing emissions. The engine is restarted automatically within a fraction of a second.

### Brake Energy Regeneration.

The alternator disengages automatically when the battery is fully charged, only re-engaging when the battery needs charging. This reduces the demands on the engine, reducing fuel consumption and emissions. In addition, when the car is braking or coasting, the system automatically engages the alternator to charge the battery, recycling energy that would otherwise be wasted.

### Electric Power Steering.

The electric power steering support only uses energy as needed to assist steering. When a steering wheel is static, for example when driving on a straight road, the electric motor is inactive.

### Optimum Shift Indicator.

Timely gear shifts are one of the most effective ways to save fuel. A small visual display on the vehicle's instrument panel shows the optimum gear for a more fuel-efficient driving style.

Individual BMW EfficientDynamics technologies may be excluded depending on the model and optional equipment chosen. Your BMW Dealer will be pleased to provide you with more information.

**BMW EfficientDynamics**  
Less emissions. More driving pleasure.



## BMW EFFICIENT DYNAMICS.

**There are engines and there are BMW engines.** A BMW engine delivers a characteristically smooth, compelling and free-revving response, yet it's also remarkably fuel efficient. Auto Start-Stop, fitted on all four-cylinder models with a six-speed manual transmission, switches off the engine when power isn't needed, such as at traffic lights or in a tailback. Whichever engine you choose, Brake Energy Regeneration enables the car's battery to recharge between periods of deceleration – when, for instance, you take your foot off the throttle as you approach traffic lights. These innovations, collectively known as EfficientDynamics at BMW, serve just one purpose: to make every BMW as satisfying to own as it is to drive.

**BMW 118i.** This four-cylinder in-line petrol engine benefits from high-precision direct injection. For optimal efficiency, Piezo injectors deliver the fuel at high pressure into the thermally optimised combustion chambers. This direct injection process allows the engines to remain in “lean-burn operation” for almost two-thirds of normal driving. Lean-burn means that the engines work with a significant surplus of air – and therefore extremely efficiently – in city driving, on country roads and at moderate motorway speeds. In addition, Auto Start-Stop and

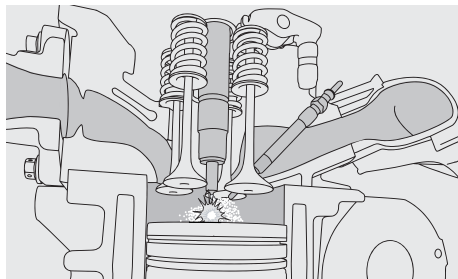
Brake Energy Regeneration maximise economy further, without compromising the engine's dynamic appeal. The responsive BMW 118i produces a convincing 143hp (105kW) for impressive performance: 0 to 62mph (100km/h) in 8.8 seconds (3-door: 8.7 seconds) and a maximum speed of 130mph.

**BMW 116i.** This four-cylinder in-line petrol engine draws 122hp (90kW) and 185 Nm of torque at 3,000 – 4,250rpm to deliver eager responses. The engine offers high-precision direct injection technology for outstanding efficiency. You'll feel the benefit in everyday driving, although the BMW 116i can also reach 62mph (100km/h) from a standing start in 9.9 seconds, (3-door: 9.8 seconds) it still returns 46.3mpg (6.1 l/100 km) on a combined cycle.

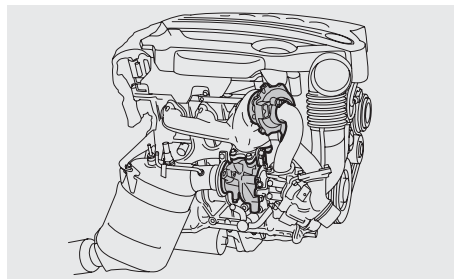
Whichever engine you opt for, a rewarding six-speed manual transmission with a short, precise gearshift, transfers the power to the road in a smooth, efficient manner. If you prefer an automatic transmission with Steptronic (optional), Adaptive Transmission Management (ATM) adjusts the gearshifts to suit your driving style, ensuring driving pleasure that engages, in every sense.

**The 2.0 litre in-line four-cylinder petrol engine in the BMW 116i and 118i is unsurpassably refined all the way to its top speed.**

**BMW EfficientDynamics**  
Less emissions. More driving pleasure.



**Direct injection:** With diesel direct injection, fuel is fed into the engine's combustion chamber by electrically controlled injectors. The injection timing and quantity are varied according to the driver's demands, at up to five injections per combustion cycle. The result: quieter, smoother operation and lower emissions.



**The BMW 123d:** Two turbochargers, configured in parallel, contribute to the spontaneous delivery of power from the four-cylinder in-line diesel engine in the BMW 123d.

## WITH A BMW ENGINE, BMW EFFICIENT DYNAMICS MEANS REDUCED FUEL, NOT PERFORMANCE.

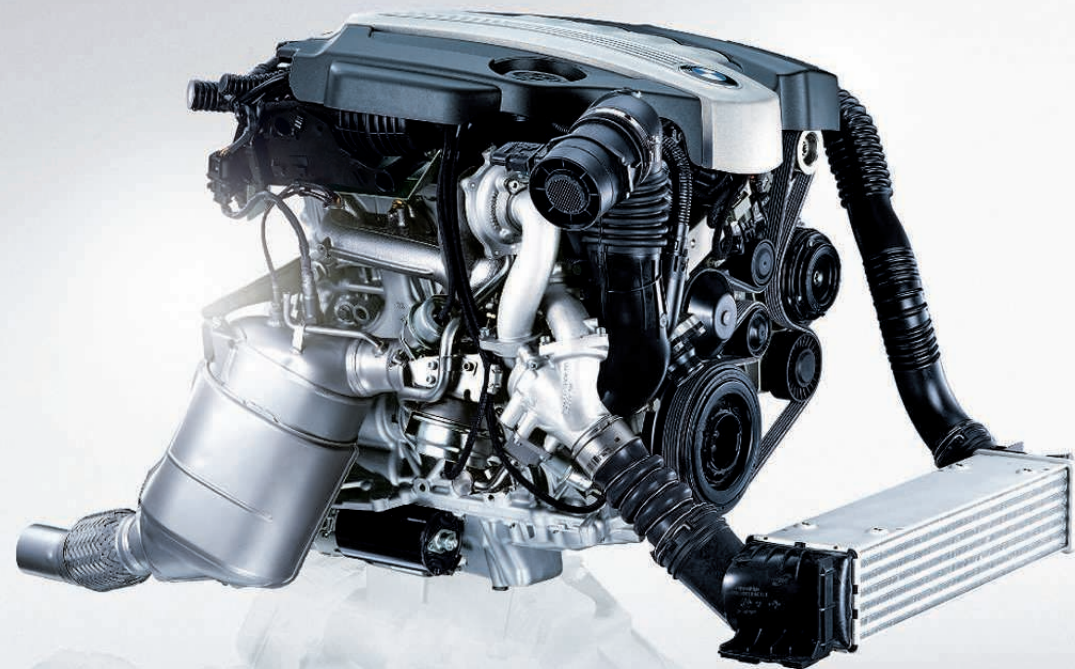
**Smooth, muscular responses come as standard with diesel engines in the BMW 123d, the 120d, 118d and 116d.** Each remains softly spoken yet delivers impressive power. All are fitted with twin balancer shafts and common-rail technology to deliver exemplary smoothness. A volume-controlled high-pressure pump ensures fine atomising of the fuel, which allows more output to be generated more quietly than ever before. These engines also impress with their intelligent energy management, a fundamental principle of BMW's EfficientDynamics philosophy. Brake Energy Regeneration and Auto Start-Stop (in conjunction with six-speed manual transmission) allow the BMW diesel engines to deliver improved fuel consumption with no compromise in driving pleasure.

**The BMW 123d.** The first four-cylinder in-line two-stage, Twin-turbo engine in the segment offers a high performance diesel engine with outstanding economy and emissions figures. Auto Start-Stop and Brake Energy Regeneration help to ensure that the 123d achieves a combined fuel consumption of 55.4mpg (5.1l/100km). Yet it can also accelerate from 0 to 62mph (100km/h) in 7.0 seconds (3-door: 6.9 seconds) and achieves a top speed of 148mph. The engine features intelligent use of two-stage, Twin-turbo technology and incredibly only emits 135g/km. The first turbo generates power quickly at lower revs while the second joins seamlessly at 2,000rpm resulting in almost no turbo lag and a smooth driving experience. This engine is an outstanding showcase for BMW EfficientDynamics proving that you can have class leading efficiency – outstanding fuel economy together with ultra low emissions but not at the expense of the performance and driving dynamics that BMW is synonymous with.

**The BMW 120d.** Impressive power, efficiency and flexibility lie at the heart of this 177hp (130kW) engine, which can propel the BMW 1 Series from 0 to 62mph (100km/h) in 7.6 seconds (3-door: 7.5 seconds). The smooth, dynamic responses are aided by the immediacy of 350Nm of torque at 1,750rpm and remain available up to a top speed of 142mph. Auto Start-Stop switches off the engine when power isn't needed – when you stop at traffic lights, for instance – and restarts it in an instant when the driver lightly depresses the clutch pedal. Meanwhile, Brake Energy Regeneration charges the car battery when the engine is in overrun, such as when you take your foot off the accelerator. The benefits of this intelligent energy management are apparent in everyday driving and, of course, the combined fuel consumption of 60.1mpg (4.7l/100 km).

**The BMW 118d.** Sharp responses and smooth delivery are not mutually exclusive, as this refined, muscular engine proves. The 143hp (105kW) powerplant can accelerate the BMW 1 Series from 0 to 62mph (100km/h) in just 9.0 seconds (3-door: 8.9 seconds) on the way to a maximum speed of 130mph.

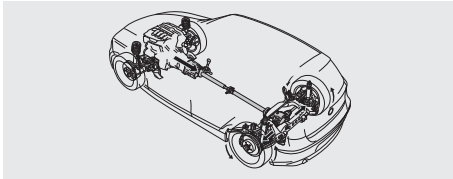
**The BMW 116d.** Highly fuel efficient yet impressively responsive – 116hp (85kW) and 260Nm of torque from 1,750rpm combine to take the 116d from 0 to 62mph in just 10.3 seconds (3-door: 10.2 seconds), with a maximum speed of 124mph. The 116d achieves 62.8mpg (4.5l/100km) on the combined cycle, whilst only producing an astonishing 118g/km of CO<sub>2</sub> emissions, making it the most fuel efficient in the range.



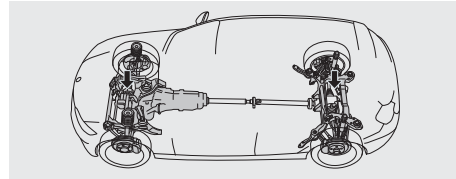
**The 2.0 litre four-cylinder engine in the BMW 123d boasts an unequalled fusion of power and efficiency.**

**BMW EfficientDynamics**  
Less emissions. More driving pleasure.

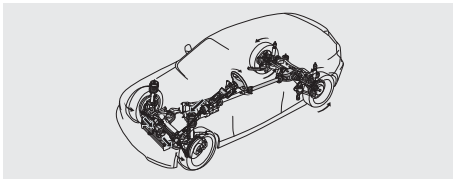
## ENJOY EXCITEMENT AND REASSURANCE. THE BMW 1 SERIES.



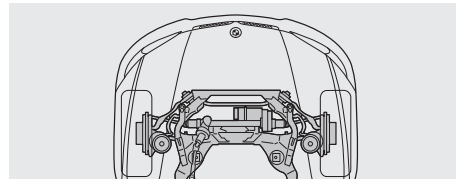
**Rear-wheel drive:** The BMW 1 Series is the first car in its class to have rear-wheel drive, a BMW engineering hallmark. This ensures an exciting combination of agility and stability giving superb traction and road-holding.



**50:50 weight distribution:** Thanks to a revised suspension set-up, rear-wheel drive, relocation of the battery and extensive use of lightweight aluminium, the BMW 1 Series achieves near-perfect 50:50 weight distribution on the front and rear axes. This balance ensures neutral steering behaviour and superior agility.



**Precise steering:** Because steering and propulsion aren't handled by the same wheels, torque steer experienced in front wheel drive vehicles has been eliminated. In the BMW 1 Series, because the front wheels are not burdened with having to drive the car, steering force distribution is even and steering angles are small. You can sense cornering speeds and road conditions where it matters: through the steering wheel.

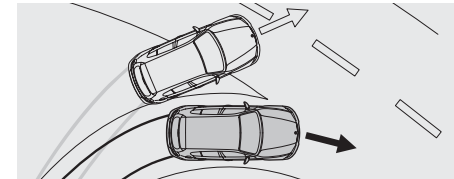


**Aluminium front suspension:** Balance is important, but so is strength. That's why BMW developed a lightweight, double-joint spring strut front suspension with hydromounts to ensure low noise and vibration.

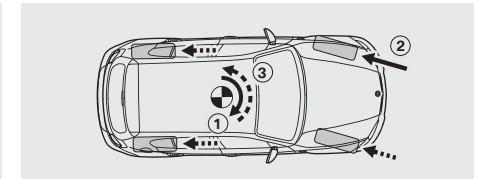
## WE CAN'T ENSURE ROAD SAFETY. BUT WE CAN MAKE OUR CARS SAFER.

**You can rely on the BMW 1 Series in just about any situation.** And for every ounce of inspiration you put into driving this car, you get an equal measure of reassurance – whether you're on exciting back roads or the motorway. A very stiff body not only gives high levels of crash protection, but also surefooted road-holding, supported by advanced chassis and suspension control systems. Features such as Dynamic Stability Control (DSC), Dynamic Traction Control (DTC) and Dynamic Brake Control (DBC) combine to keep everything in order. DSC and DBC, for example, will intervene in

engine management when necessary and step in to apply the brakes on a specific wheel to stop the car under or over steering. And even if there's a complete loss of tyre pressure, DTC and ABS subsidiary systems remain fully functional. Another clever feature is brake force display, where the brake lights increase their intensity the harder you press on the pedal. Chances are, though, you'll be more interested in the accelerator...



**Dynamic Stability Control (DSC):** manages difficult situations such as oversteer (where the car's rear swings out in a corner) or understeer (where the front doesn't turn in fully) by applying the brakes on one side to stabilise the car. Pressing the DTC button activates the DTC Traction Mode. This allows for sportier driving by allowing a pre-defined extra degree of wheel-slip. DSC will then only intervene in critical situations.



Braking reduces the load on the rear wheels, which can lead to oversteering in bends (1). In braking manoeuvres outside the ABS control range, Dynamic Brake Control (DBC) helps even things out by generating even brake pressure at all four wheels (2) to create a stabilising counterforce (3).

## BMW CONNECTED DRIVE: INTELLIGENT NETWORKING OF DRIVER, CAR AND ENVIRONMENT.

The IT revolution has changed the way we live. For BMW drivers, it has become normal to view their vehicle as another networked component of their lives – they expect to be able to access information on the go, communicate with others, and

keep up with the latest news. The term BMW ConnectedDrive therefore comprises all packages and innovative technologies that enable BMW vehicles and their occupants to connect with the outside world.



### Convenience.



#### BMW Assist Information Plus.

At the push of a button local information is available wherever you may be in the country, using Information Plus. The service connects you to an operator who will be able to quickly access the information you need. You can request places of interest from hotels and restaurants, to museums or historical attractions. The information is then sent to your car and can then be used in your navigation system to plan a route to your destination, or to make a call on your Bluetooth telephone. Information Plus is part of the optional BMW Assist package.

### Infotainment.



#### USB audio interface.

In conjunction with an optional navigation system, the USB audio interface and an original iPod USB cable, the album cover art for the track being played can be shown on the Control Display in the car (the cover art display function is also available for other devices). The USB audio interface also allows the connectivity software in your BMW to be easily updated, so new compatible mobile phones and music players become fully operational after updating with a USB memory stick.<sup>1</sup>

### Safety.



#### High-beam Assistant.

No unintentional dazzle – the optional High-beam Assistant uses an image sensor to recognise oncoming traffic and changing light conditions. When the system is active it automatically switches the high-beam on and off.



#### Emergency 999 SOS call.

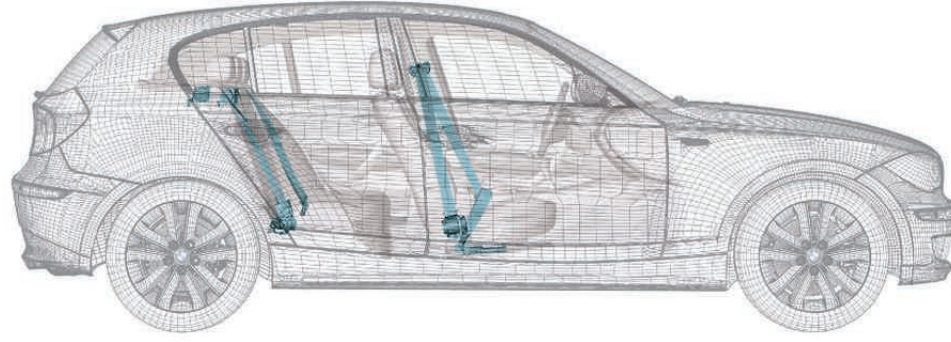
With this feature you can summon help manually by simply pressing the emergency call button activating a 999 call. You will be linked to an Emergency Service Centre, so you can explain the situation and arrange for assistance. An automatic Emergency SOS call also gives you extra reassurance that if you cannot call for help, the vehicle will. In extreme situations the crash or airbag sensor will automatically activate an Emergency 999 SOS call. With either the manual or the automatic Emergency SOS call, details of your vehicle and location will be sent directly to a 999 Emergency Service Centre, so that immediate action can be taken and assistance dispatched without delay. The Emergency 999 SOS call is part of the optional BMW Assist package.

<sup>1</sup> For information on software updating see [www.bmw.com/update](http://www.bmw.com/update)

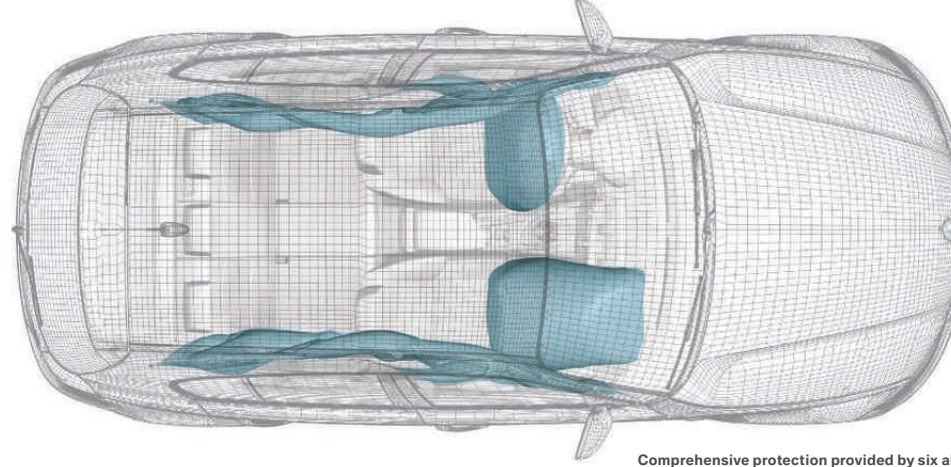
Certain BMW ConnectedDrive features are optional dependant on the model and options chosen. Screens and Services may differ in the UK. BMW Assist services require a connection to a UK mobile telephone network and are not available on the Isle of Man, Channel Islands or in the Republic of Ireland. Some services are available in other European countries, please refer to your local BMW Dealer for more information.

# THE MORE YOU KNOW ABOUT IT, THE MORE YOU FEEL GOOD ABOUT IT.

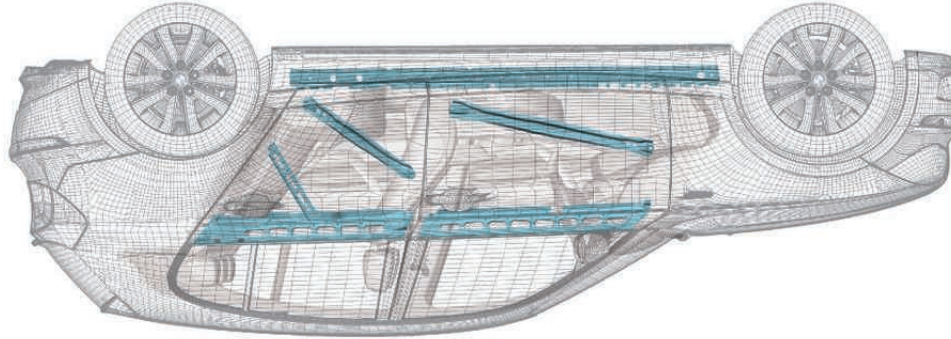
For BMW, safety is paramount. The same applies to the Euro NCAP crash test, the toughest European test for automotive safety. The BMW 1 Series achieved its top award: five stars. Below are five reasons why.



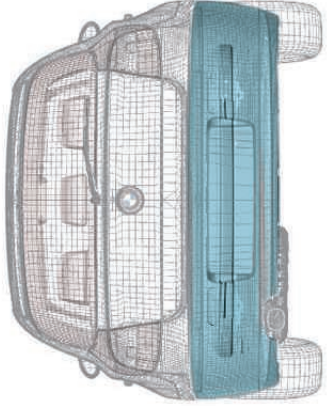
**Belt system:** The seat belts are comfortable to wear and benefit from an ideal belt geometry. The seat belts at the front are equipped with pyrotechnic belt tensioners and belt force limiters, while at the rear, an ergonomic restraint system comprising three-point seatbelts, third head restraints and integrated belt catches ensures plenty of safety on all seats.



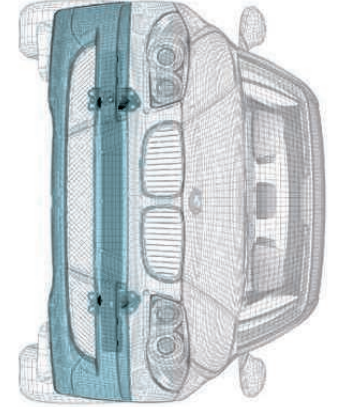
**Comprehensive protection provided by six airbags:** Driver and front passenger airbags, seat-integrated side airbags at the front, and two curtain head airbags with splinter protection, which stretch across the entire length of the side windows.



**Extremely stiff body:** The underbody structure features high-strength steel components and special reinforcements. It forms the basis for the occupant cell, which benefits from very strong pillars and crossmembers to provide all occupants with a stable survival space in an emergency.



**The rear bumper:** includes steel impact absorber units, which are reversible after impact speeds of up to 2.5mph. Replaceable crumple elements at the front and rear reliably prevent damage to the car's body for impact speeds up to 9mph.



**The front bumper:** features integrated impact absorber units that absorb impact forces up to 2.5mph without any damage to the reversible crumple elements.

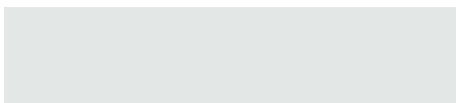
■ Standard equipment

□ Optional equipment

The following pages show the colours and materials available for the BMW 1 Series. Use them to identify your favourite colours, or compare various combinations. These colour samples are designed to give you a first impression of paints and materials. Experience has shown, however, that printed versions of paint and upholstery colours cannot in all cases faithfully replicate the colour appearance of the originals. We recommend therefore that you consult your local BMW Dealer on your preferred colour choices. They will be happy to show you larger samples and assist you with your choices.

## Exterior colours

■ 300 Alpine White, non-metallic



■ 668 Jet Black, non-metallic<sup>3</sup>



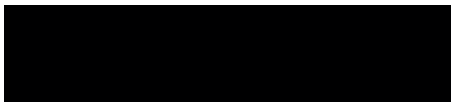
■ A61 Crimson Red, non-metallic<sup>3</sup>



□ 354 Titanium Silver, metallic



□ 475 Black Sapphire, metallic



□ A52 Space Grey, metallic



□ A76 Deep Sea Blue, metallic<sup>3</sup>



□ 896 Bluewater, metallic



□ A51 Montego Blue, metallic<sup>3</sup>



□ 381 Le Mans Blue, metallic<sup>1</sup>

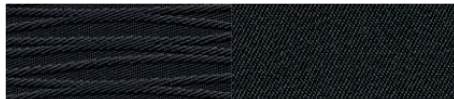
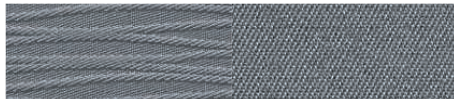
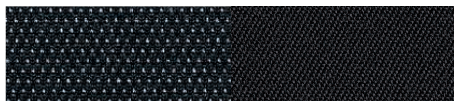
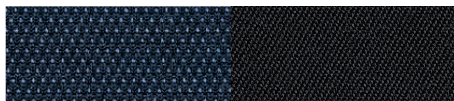
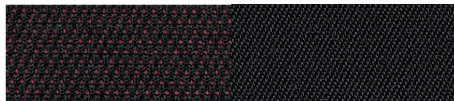
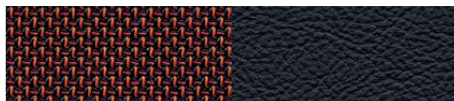
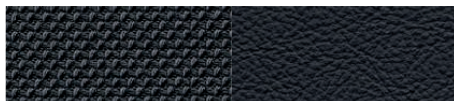


<sup>1</sup> Only available on M Sport models.

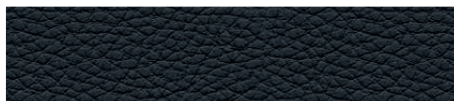
<sup>2</sup> Only in conjunction with Sport seats.

<sup>3</sup> Not available on M Sport models.

## Upholstery colours

■ EAAT Anthracite, Electra cloth<sup>3</sup>■ EAAL Alaska Grey, Electra cloth<sup>3</sup>■ GCSW Black, Flashpoint cloth/Sensatec<sup>1</sup>□ AUAT Anthracite, Network cloth<sup>3</sup>□ AUD9 Monaco Blue, Network cloth<sup>3</sup>□ AUF8 Cranberry Red, Network cloth<sup>3</sup>□ FHF5 Orange/Black, Pearlpoint cloth/leather<sup>2,3</sup>□ FHAT Anthracite/Black, Pearlpoint cloth/leather<sup>2,3</sup>

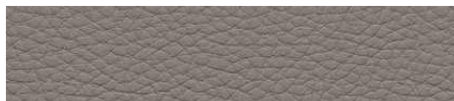
□ LWSW Black, Boston leather



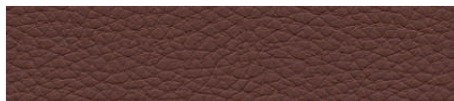
□ LWB7 Lemon, Boston leather



□ LWA5 Beige, Boston leather



□ LWB8 Terra, Boston leather



■ Standard equipment

□ Optional equipment

## Interior colours

Black

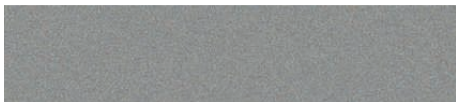


Beige



## Interior trims

■ 4AK Silver



□ 4CG Satin Silver<sup>2</sup>



□ 4B1 Cashmere Silver



□ 4B3 Brushed Aluminium with accent line



■ 4MG Aluminium Glacier Silver<sup>1</sup>



□ 4AT Black, high-gloss<sup>5</sup>



□ 4A3 Light Walnut wood



□ 4AS Dark Grey Poplar wood



## Combinations

	Electra cloth <sup>5</sup>		Flashpoint cloth / Sensatec <sup>1</sup>	Network cloth <sup>5</sup>			Pearlpoint cloth/leather <sup>5</sup>		Boston leather <sup>4</sup>			
Standard seats	●	●	—	●	●	●	—	—	●	●	●	●
Sport seats	—	—	●	●	●	●	●	●	●	●	●	●
Upholstery colours	Anthracite	Alaska Grey	Black	Anthracite	Monaco Blue	Cranberry Red	Orange/Black	Anthracite/Black	Black	Lemon	Beige	Terra
Interior colours	Black	Black	Black	Black			Black		Black	Black	Beige	Black
<b>Exterior colours</b>												
300 Alpine White non-metallic	●	●	●	●	●	●	●	●	●	●	●	●
668 Jet Black non-metallic <sup>2</sup>	●	●	—	●	●	●	●	●	●	●	●	●
A61 Crimson Red non-metallic <sup>2</sup>	●	●	—	●	●	●	●	●	●	●	●	●
354 Titanium Silver metallic	●	●	●	●	●	●	●	●	●	●	●	●
475 Black Sapphire metallic	●	●	●	●	●	●	●	●	●	●	●	●
A52 Space Grey metallic	●	●	●	●	●	●	●	●	●	●	●	●
A76 Deep Sea Blue metallic <sup>2</sup>	●	●	—	●	●	●	●	●	●	●	●	●
896 Bluewater metallic	●	●	●	●	●	●	●	●	●	●	●	●
A51 Montego Blue metallic <sup>2</sup>	●	●	—	●	●	●	●	●	●	●	●	●
381 Le Mans Blue metallic <sup>1</sup>	—	—	●	—	—	—	—	—	●	●	●	●
<b>Interior trims</b>												
4AK Silver	●	●	—	●	●	●	●	●	—	—	—	—
4CG Satin Silver <sup>2</sup>	●	●	—	●	●	●	●	●	●	●	●	●
4B1 Cashmere Silver	●	●	—	●	●	●	●	●	●	●	●	●
4B3 Brushed Aluminium with accent line	●	●	●	●	●	●	●	●	●	●	●	●
4MG Aluminium Glacier Silver <sup>2</sup>	—	—	●	—	—	—	—	—	●	●	●	●
4AT Black, high-gloss <sup>5</sup>	●	●	—	●	●	●	●	●	●	●	●	●
4A3 Light Walnut wood	●	●	●	●	●	●	●	●	●	●	●	●
4AS Dark Grey Poplar wood	●	●	●	●	●	●	●	●	●	●	●	●

● Available — Not available

<sup>1</sup> Only available on M Sport models.  
<sup>2</sup> Standard on T20d SE.  
<sup>3</sup> Only in conjunction with Sport seats.  
<sup>4</sup> Leather upholstery features on: seat facing, front head restraint facings, and outer rear head restraint facings.  
<sup>5</sup> Not available on M Sport.

**M Sport models** are available in the following exterior colours only: Alpine White, Black Sapphire, Bluewater, Le Mans Blue, Space Grey and Titanium Silver. Please note all M Sport models come with Flashpoint cloth/Sensatec upholstery with Aluminium Glacier Silver interior trim as standard. Wood trim is available as an alternative. Boston leather is available as an option.

The above table shows all available exterior and upholstery colour combinations. For more information on how your preferred combinations will appear, please refer to the "Build your BMW" section of the [www.bmw.co.uk](http://www.bmw.co.uk) website, or consult your local BMW Dealer.



## BALANCE. CONTROL.

A visual expression of cool restraint and sophisticated balance: the BMW 1 Series with Titanium Silver metallic paintwork, Alaska Grey Electra cloth upholstery and Dark Grey Poplar wood interior trim.

Model shown:	
Exterior colour:	Titanium Silver metallic
Upholstery:	Alaska Grey Electra cloth
Interior trim:	Dark Grey Poplar wood
Optional equipment:	BMW Professional radio, Air conditioning, manual, Loudspeaker system – BMW Business



## DYNAMIC. CHARISMATIC.

A contemporary, vibrant ambience with heightened dynamic appeal. The BMW 1 Series with Alpine White non-metallic paintwork, Orange/Black Pearlpoint cloth/leather upholstery and Brushed Aluminium with accent line interior trim.

Model shown:	
Exterior colour:	Alpine White non-metallic paintwork
Upholstery:	Orange / Black Pearlpoint cloth / leather
Interior trim:	Brushed Aluminium with accent line
Optional equipment:	Sport leather multi-function steering wheel, three spoke, Air conditioning, automatic, Navigation system – BMW Professional Multimedia



## EXPRESS YOURSELF.

The BMW 1 Series allows you to express your individuality in many ways. Tactile leather, stylish cloth coverings, the warmth of natural wood, the contemporary cool of Aluminium – it's entirely your choice. Likewise, the colour of the paintwork. You could opt for Deep Sea Blue metallic paintwork, with Anthracite Network cloth upholstery and Satin Silver interior trim, as here. Or any other combination that fires your imagination.

	Model shown:
Exterior colour:	Deep Sea Blue metallic paintwork
Upholstery:	Anthracite Network cloth
Interior trim:	Satin Silver
Optional equipment:	Sport leather multi-function steering wheel, three-spoke, Automatic transmission, Air conditioning, automatic with two-zone control, Navigation system – BMW Professional Multimedia



■ Standard equipment

□ Optional equipment



□ **522 Xenon headlights** for low and high beam, including LED taillights, four Corona rings and automatic range control, provide better illumination of the road ahead at night or in poor visibility (includes option 502, Headlight wash).

□ **524 Adaptive Headlights** for improved visibility in bends: the electromechanically controlled headlights are directed into the bend as soon as the vehicle starts cornering. Only in conjunction with Xenon headlights and Rain sensor with automatic headlight activation.



□ **502 Headlight wash** ensures optimum road illumination in all weather conditions. When the lights are on, the headlights are automatically cleaned in parallel with the windscreen.



□ **520 Foglights, front** are integrated into the front apron and offer additional safety in poor visibility. Selection of foglights, front also includes heated front windscreen washer jets and heated exterior mirrors (standard on SE and M Sport models).



□ **563 Extended lighting**, including front and rear interior reading lights, lighting for vanity mirrors in sun visors for driver and passenger, front footwell lighting and puddle lights in exterior door handles (standard on M Sport models).



□ **346 Exterior trim, Chromeline:** available for the BMW 1 Series 3-door, this includes Chrome trim for the side window frames, front windscreen pillars, window recess finishers and door sills. The mirror triangle and window frames are finished in Black, High-gloss.



□ **339 (760, 3-door) Exterior trim, High-gloss Shadowline:** the front and rear side window surrounds, the window recess finishers and mirror triangle are finished in Black, High-gloss. (Standard on M Sport models).



□ **521 Rain sensor with automatic headlight activation** once activated, the rain sensor will automatically switch on the windscreen wipers when it rains, adjusting the wiper frequency in line with rainfall intensity. The Automatic headlight control will switch on the low-beam headlights as soon as light level drops.



■ **Exterior mirrors, painted in body colour,** with electric adjustment. In conjunction with 430, mirrors are also aspheric and tinted.



□ **507/508 Park Distance Control (PDC),** available for front and rear or rear only, facilitates parking and manoeuvring in confined spaces, giving an acoustic warning signal indicating the proximity of objects to the front and rear of the car. In conjunction with a navigation system, a visible display will also appear on screen. (PDC, rear as standard on SE and M Sport models).



□ **235 Towbar, detachable** (includes run-flat tyres. Additional wiring may be required depending on towing usage).



■ **Brake Force Display** helps vehicles travelling behind you to evaluate your braking more accurately. In the event of an emergency stop, the illuminated area of the brake lights is increased. The traffic behind the vehicle can gauge immediately whether the BMW in front is using the brakes to slow down or whether it is an emergency stop.

■ Standard equipment

□ Optional equipment



■ 2KH 16" light alloy V-spoke style 229 with 195/55 R16 tyres (116i, 118i, 116d and 118d) and 205/55 R16 (120d) tyres (standard on ES models).



□ 2BT 16" light alloy Double-spoke style 222 with 205/55 R16 tyres (standard on SE models).



□ 2K9 16" light alloy V-spoke style 360 with 205/55 R16 tyres.



□ 2R2 17" light alloy Star-spoke style 256 with 205/50 R17 tyres.



□ 2KF 18" light alloy V-spoke style 217 with 205/45 R18 front, 225/40 R18 rear tyres.



□ 2KC 17" light alloy V-spoke style 141 with 205/50 R17 tyres.



□ 2CH 17" light alloy Star-spoke style 142 with 205/50 R17 front, 225/45 R17 rear tyres.

■ Standard equipment

□ Optional equipment



■ **Standard steering wheel**, three-spoke (diameter 375mm).



□ **255 Three-spoke Sport leather steering wheel** (diameter 369mm).



□ **249/255 Sport multi-function leather steering wheel, three-spoke** (diameter 369mm), includes controls for radio and factory-fit telephone (standard on SE models).



■ **Instrument cluster** with analogue instruments and red backlighting: speedometer, LC display for mileage counter, trip counter and On-Board Computer, plus rev counter with integrated fuel gauge.



■ **Auto Start-Stop** indicates on the Info Display when Auto Start-Stop has switched off the engine, at traffic lights, for instance. The display switches off again when the engine is restarted automatically (for all models in conjunction with six-speed manual transmission). Also indicates when system is not active due to external conditions.



■ **On-Board Computer**, including the following functionality: fuel consumption and range, information display-analogue instruments combined with liquid crystal display and personal profile functions.



■ **Optimum Shift Indicator** for models with six-speed manual transmission. The display indicates when you could be driving more economically in a different gear. The system recommends when to shift up or down and adapts its recommendations to your driving style.



■ **Start-Stop button** for the engine. Once you've inserted the ignition key, you can start and stop the engine by pressing this button.



□ **540 Cruise control** stores and maintains a desired speed above approx. 20mph activated using the left-hand steering-column stalk. After accelerating, the vehicle automatically returns to the previously stored speed. Braking cancels the setting.



□ **609 Navigation system – BMW Professional Multimedia** includes a high resolution Control Display with an 8.8" fixed colour monitor, divided into main window and assistant window. Map and arrow display plus dynamic route planning are features of this navigation system. The iDrive Controller offers intuitive operation with the use of shortcut buttons, as well as eight programmable favourite buttons for iDrive functions. A built in hard disc drive allows for improved speed of operation and data storage, with a multimedia capacity of 12GB storage for audio files.



□ **606 Navigation system – BMW Business Advanced** includes a 6.5" fixed colour monitor with map and arrow display plus dynamic route planning. A CD drive and eight programmable favourite buttons are included, along with the iDrive Controller and shortcut buttons. Traffic Message Channel is included.<sup>1</sup>



□ **BMW Assist<sup>2</sup>** – provides you with a range of services including an Emergency 999 SOS call, a direct link to a BMW Service Centre and quick access to locally-based information. A user-friendly BMW Online portal with the latest news, and Google local search is also included.



□ **493 Extended storage** includes nets on back of front seats, 12V socket and sliding net in luggage compartment, two securing rings, and two tensioning straps on luggage compartment floor, two cup holders in the centre console and storage compartment high up on the dashboard (not available in conjunction with a navigation system).



□ **534 Air conditioning, automatic with two-zone control** (shown here), microfilter, fogging and solar sensor and residual heat button. Separate temperature control for left and right side (standard on SE and M Sport models).

□ **530 Air conditioning, manual** with microfilter.



■ **Six-speed manual transmission** for a particularly sporty drive. Immensely smooth, with perfect ratios and precise, short-throw gearshifts. The addition of a sixth gear means that the gear ratios are more closely spaced, enabling you to make even greater use of the engine's power.



□ **205 Six-speed automatic transmission** with Adaptive Transmission Management (ATM) and Steptronic. This six-speed transmission performs very fast, flawless gearshifts – for maximum dynamic performance. Available on all models<sup>2</sup> (except 116d). Shown here: Smoker's package deleted.

<sup>1</sup> TMC services are not available in the Republic of Ireland.

<sup>2</sup> With steering wheel-mounted gearshift paddles on 123d models.

<sup>3</sup> BMW Assist services are not available in the Republic of Ireland, the Isle of Man or the Channel Islands.

■ Standard equipment

□ Optional equipment



■ **Auxiliary input point** for an external audio source, such as an MP3 player.

□ **6FL USB audio interface** allows you to connect a USB memory stick. Details of music stored on the device are shown on the radio display or the Control Display. You can operate it using the controls on the multi-function steering wheel or with the iDrive Controller, where applicable.



□ **663 BMW Professional radio with single CD player, (with MP3 playback capability)** features two-line display for telephone numbers, names and CD titles as well as clock, FM and MW reception. It is equipped with six pre-set radio station buttons, automatic volume control, integrated CD drive, six loudspeakers and an aux-in point.



□ **688 Loudspeaker system – harman/kardon** with powerful amplifier, equalizer and ten high-performance loudspeakers for superb sound. Surround sound function enables simulation of various acoustic environments.

□ **676 Loudspeaker system – BMW Business** with eight loudspeakers.



□ **672 CD changer** for six CDs located in the left-hand side of the luggage compartment.



■ **Electric windows, front** pull/press switch and open/close fingertip control, all-round comfort closing function and trap release.

■ **Electric windows, rear** (Standard on all 1 Series 5-door models. Not available on 3-door models.)



□ **644 Bluetooth telephone preparation<sup>1</sup>** with hands-free system, connection for recharging. Snap-in adaptor is available separately.

□ **633 Bluetooth telephone preparation<sup>1</sup> with telematics** for BMW Assist<sup>2</sup>.

□ **6NN Bluetooth hands-free facility** enables wireless connection for compatible phones.

<sup>1</sup> Snap-in adaptor available as a Genuine BMW Accessory. Consult your local BMW Dealer for details on recommended mobile phones.

<sup>2</sup> BMW Assist services are not available in the Republic of Ireland, Isle of Man or the Channel Islands.



□ **Cup holders**, integrated in the centre console and within comfortable reach for the driver or front passenger. Vehicles without iDrive have two cup holders (see image). (As part of 493 Extended storage or Z8M Comfort package).



□ **473 Armrest – front, centre folding**, with integrated storage compartment (standard on SE and M Sport models).



■ **Standard seats with manual adjustment**, including front seat height adjustment for driver's seat and passenger's seat. Available in Electra cloth, Network cloth, and Boston leather, as shown above.



□ **481 Sport seats, front** for driver and front passenger with electric adjustment for side bolsters plus manual adjustment of fore and aft position, seat height, backrest angle, seat angle and thigh support (standard on M Sport models).



□ **459 Seat adjustment – front, electric with driver memory** with electric seat height and backrest adjustment, as well as fore and aft and seat angle adjustment, with memory function for driver's seat and exterior mirrors (including automatic kerb focus). Two personalised positions can be stored for the settings of the driver's seat and the exterior mirrors.



□ **494 Seat heating, front** for driver and front passenger, seat surface and backrest, including side supports, are rapidly heated to add comfort in colder months. The heated seats can be adjusted by a three stage toggle switch.



□ **488 Lumbar support, driver and front passenger**, electrically adjustable, for an ergonomically perfect seat position and support of the back muscles.



■ **5DC Head restraints, rear and folding**. All three rear head restraints are foldable.



■ **Three rear seats** are standard for the BMW 1 Series. This includes three head restraints and three three-point belts, with belt fasteners positioned on the inside of the outer seats.

■ Standard equipment

□ Optional equipment



■ **Rear backrest, 60:40 split-folding rear seat, folds down to create an almost level luggage compartment floor.**



■ **Luggage compartment, illuminated and with all-round textile lining; a luggage strap on the left-hand side can be used to secure small items. (Optional through-loading modular ski bag also shown. Image shows optional securing rings and storage net).**



□ **413 Luggage compartment separating net protects the passenger area from falling objects should the vehicle brake hard.**



□ **468 Through-loading modular ski bag enables clean and safe transportation of up to four pairs of skis, or two snowboards, with up to four people on board. If the ski bag is not required, it can be stored out of sight to save space.**



□ **Storage tray, positioned between the two rear seats, offers additional storage space (available in the BMW 1 Series 3-door only when ordered with four-seat configuration).**



□ 403 Glass sunroof with sliding and tilt function electric adjustment can also be operated via the key.



■ Child seat ISOFIX attachment anchorage points are located on the two rear outer seats and front seat (with airbag deactivation). This allows a child seat to be secured safely using its integral snap-on latches.



□ 431 Rear-view mirror, automatically dimming with automatic anti-dazzle function and large surface area, the dazzle from following vehicles is automatically reduced when the amount of light detected exceeds a defined limit (standard on M Sport models).



■ Personal Profile\* stores your personal preferences for settings such as temperature and air distribution settings of the automatic air conditioning, with two-zone control, the position of the exterior mirrors, and the volume and sound settings of the radio. These settings are then activated when your key is used to unlock the central locking.

\* All features dependant on standard equipment. Please consult your local BMW Dealer for further details.



□ **The M Sport model** exerts a strong, dynamic presence, with special M aerodynamic bodystyling and 17" or 18" light alloy wheels equipped with mixed tyres. The car's visual appeal is further enhanced by M Sport suspension and High-gloss Shadowline exterior trim, sport seats, an M Sport leather steering wheel and Aluminium Glacier Silver interior trim extend the dynamic theme into the cabin. The M Sport model is also available with exclusive Le Mans Blue metallic paintwork.

■ **Front apron:** Integrated front air intake for a more muscular look.

■ **Rear apron:** Purposeful dynamics thanks to the integrated diffuser. The subtle rear spoiler and side sills complement the sporty appearance.



■ **M Sport leather steering wheel:** the thicker steering wheel rim in perforated leather offers excellent grip. The multi-function controls enable you to operate the radio, CD drive and mobile phone (optional) while driving.



■ **Sport seats** (pictured here in optional Black Boston leather upholstery) offer outstanding lateral support. The Flashpoint cloth/Sensatec upholstery in Black is available exclusively for the M Sport model.



■ **Aluminium Glacier Silver interior trim:** Adds a sporty touch and underscores the individual character of the M Sport models.



■ **Door sill finishers** with M designation, Chrome plated.



■ **2MG 17" light alloy Double-spoke style 207M** with 205/50 R17 tyres front, and 225/45 R17 rear tyres (standard on all M Sport models).



□ **2MH 18" light alloy Double-spoke style 208M** with 205/45 R18 tyres front, and 225/40 R18 rear tyres (optional on all M Sport models).



BMW Performance aerodynamic kit, BMW Performance roof spoiler, Carbon BMW Performance 18" light alloy Double-spoke style 269.

## PASSION WITHOUT COMPROMISE. BMW PERFORMANCE.

A passion for performance means a refusal to compromise. Choosing a BMW means choosing sporting performance, outstanding driving dynamics and innovative technology, because these are the principles that we're not prepared to compromise on – principles that reach their full expression with the BMW Performance range.

These technical and design components are all designed to ensure that drivers – and admiring onlookers – feel the full benefits of BMW engineering.

In particular, the BMW designers took their inspiration from the world of motorsport. As a result, the BMW Performance range enables BMW owners to indulge their passion for performance in a way that is individual, forceful and wholly without compromise.

Your BMW Dealer will be happy to provide you with further details on the BMW Performance range. For more information visit:

[www.bmw.co.uk/performance](http://www.bmw.co.uk/performance)



BMW Performance mirror covers, Carbon



BMW Performance braking system



BMW Performance chassis



BMW Performance Sport steering wheel\*

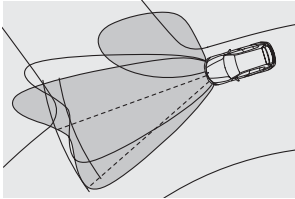


BMW Performance gear lever knob

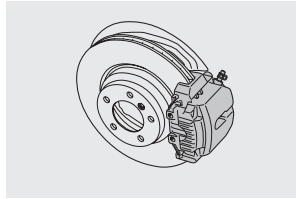


BMW Performance interior trim, Carbon

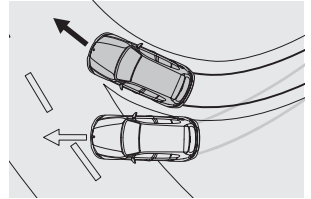
\* Must be used in strict compliance with road traffic laws.



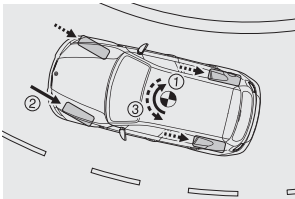
□ **524 Adaptive Headlights** swivel their beam to illuminate bends in the road. As soon as the driver starts to turn in to a corner, electro-mechanical control directs the headlamps' beam in to the bend.



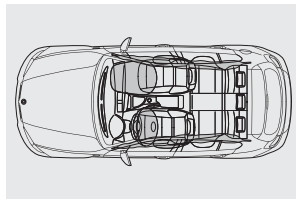
■ **Disc brakes** all-round (inner-vented at the front, in the 116d, 118d, 120d and the 123d also at the rear), specially designed to ensure maximum driving safety and easy operation. The brake system manages to combine long life with short braking distances.



■ **Dynamic Stability Control (DSC)** including Traction Mode (DTC) and CBC. DSC recognises the risk of swerving from the start and stabilises the car within milliseconds. Traction Mode is a subsidiary function which allows wheel slip within defined limits.



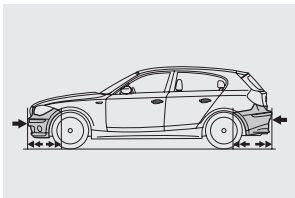
■ **Cornering Brake Control (CBC)** increases vehicle stability when braking gently in a fast bend. During braking manoeuvres, the load on the rear wheels is reduced, which in bends can lead to oversteering (1). In brake manoeuvres that are outside the ABS control range, CBC addresses this tendency by building up unilateral brake pressure (2) in order to create a stabilising counterforce (3).



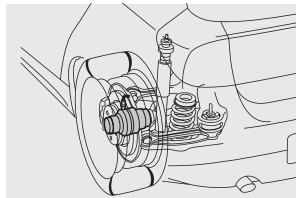
■ **Airbags:** In a BMW, all safety features complement each other perfectly. There are six airbags to provide specific protection: driver and front passenger airbags, the front-to-rear head airbags as well as side airbags integrated in the front seat backrests.



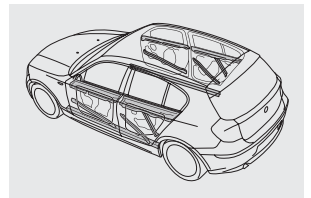
■ **BMW safety restraint system** for driver and front passenger. A combination of three-point seat belt, pyrotechnic belt tensioner and belt force limiter provides the best possible restraint in the event of a collision.



■ **Bumper system** with steel impact absorbers at the front and rear. Reversible crumple elements at the front survive impacts up to 2.5mph without damage. Replaceable crumple elements at the front and rear absorb forces up to 9mph without damage to the car's body.



■ **Tyre Puncture Warning System (TPWS)** measures the rotational speed of each wheel to detect any changes in pressure, indicating a potential puncture. The driver is then alerted through a Check/Control lamp. **Run-flat tyres** (optional on 16" wheels) have reinforced side walls ensuring they maintain their shape and rim position even after suffering a complete loss of pressure. This allows the car to continue driving up to 150 miles, at speeds of up to 50mph.



■ **Door reinforcements** offer maximum protection in the event of a side impact. Added strength is provided by diagonal crossmembers in the doors. (Here shown: the BMW 1 Series 5-door.)

<b>116iES</b>	
<b>BMW EfficientDynamics</b>	Auto Start-Stop – excluding models with automatic transmission
	Brake Energy Regeneration
	Electric Power Steering
	Intelligent Alternator Control
	Optimum Shift Indicator – excluding models with automatic transmission
<b>Engine</b>	Catalytic converter
	Digital Motor Electronics (DME)
	Double-VANOS
	Four-cylinder in-line petrol engine with high-precision direct injection
	Oil level display
<b>Transmission</b>	Gear lever, short shift
	Six-speed manual transmission
<b>Wheels and chassis</b>	16" light alloy V-spoke style 229 with tyre size 195/55 R16
	Lightweight double-joint spring-strut front axle with aluminium strut brace
	Mobility tyre sealing system
	Rear suspension, five-link
<b>Safety and technology</b>	Airbags: Crash sensor activating central locking release, hazard warning lights, fuel cut-off and interior lighting, Head airbags – driver, front passenger and rear, Impact-dependent Airbag System (ID Airbags), driver and front passenger, Side airbags, driver and front passenger, integrated into front seat backrests (thorax)
	Air conditioning, manual
	Alarm system (Thatcham 1) with remote control and engine immobiliser
	Brake Force Display
	Deformation zones – front and rear with door reinforcements and bumpers that regenerate to their original shape in impacts of up to 2.5 mph
	Disc brakes – front and rear with brake pad sensors
	Dynamic Stability Control (DSC) comprising: Anti-lock Braking System (ABS), Automatic Stability Control (ASC), Cornering Brake Control (CBC), Dynamic Brake Control (DBC), Dynamic Traction Control (DTC), Electronic Brake-force Distribution (EBD)
	First Aid kit and warning triangle
	Halogen headlights
	Head restraints – rear and foldable
	High level third brake light
	On-Board Diagnosis (OBD)
	Seat belts – front, inertia reel with pyrotechnical belt latch tensioner and belt force limiter
	Seat belts – three with inertia reel, rear
	Side impact protection
	Tyre Puncture Warning System (TPWS)
	Visible VIN
	Windscreen washer jets, front and rear
	Windscreen wipers with adjustable intermittent intervals
	<b>Seats</b>
Five seats	
Standard seats, manual adjustment	
60:40 split folding rear seat	
<b>Exterior equipment</b>	All round anti-corrosion system with partial hot galvanising, phosphate treatment and cathodic dip paintwork, preservation of hollow cavities, underfloor protection
	Exhaust tailpipe – single, oval
	Exterior mirrors – electric adjustment
	Exterior parts in body colour: Bumpers, Door handles, Side sills
	Indicator lenses, clear
	Kidney grille, chrome with black vertical slats
	Luggage compartment access via BMW Roundel
	Non-metallic paintwork

116i ES	
<b>Interior equipment</b>	Air microfilter
	Battery in luggage compartment with jump start facility in engine bay
	Central locking switch
	Courtesy lights, front and rear with soft on/off dimming
	Door sill finishers with BMW designation
	Electra cloth upholstery
	Electric windows – front and rear, with open/close fingertip control, anti-trap facility and comfort closing function
	Floor mats, velour
	Handbrake lever, gear lever knob and gaiters in Sensatec
	Interior trim, Silver
	Lights-on warning
	Luggage compartment strap for small items
	Power socket, 12V in rear of centre console
	Securing rings in luggage compartment, two
	Smoker's package
	Start-Stop button
	Steering column with manual reach and rake adjustment
	Steering wheel, three-spoke
	Storage compartments in door panels, front
	Sun visors with vanity mirrors and ticket pocket
Toolkit located in luggage compartment	
<b>Audio and communication</b>	Auxiliary input point for auxiliary playing devices
	BMW Business radio with single CD player (with MP3 playback capability)
	On-Board Computer (OBC) comprising:
	– Average speed
	– Fuel consumption and range
	– Information display – analogue instruments combined with liquid crystal display
	– Outside temperature display
	Personal Profile functions

**116d ES**

<b>(in replacement to 116i ES)</b>	Four-cylinder in-line diesel engine with common-rail technology
	Diesel Particulate Filter (DPF)
	Digital Diesel Electronics (DDE)
	Incorrect fuelling protection system
	Oil dipstick
	Turbo

**116i, 116d and 118d Sport models**

<b>(in addition to ES models)</b>	17" light alloy Star-spoke style 256 with tyre size 205/50 R17
	Exterior mirrors, heated
	Foglights, front
	Network cloth upholstery
	Run-flat tyres with Tyre Puncture Warning System (TPWS)
	Sport multi-function leather steering wheel
	Sport seats, front
Windscreen washer jets, heated	

**116i SE and 118i SE, 116d SE, 118d SE models**

<b>116i SE (in addition to 116i ES) and 118i SE, 116d SE and 118d SE models (in addition/ replacement to ES models)</b>	16" light alloy Double-spoke style 222 with tyre size 205/55 R16
	Air conditioning, automatic with two-zone control
	Armrest – front, centre
	Exterior mirrors, heated
	Foglights, front
	Park Distance Control (PDC), rear
	Sport multi-function leather steering wheel
	Windscreen washer jets, heated

**120d SE**

<b>(in addition to SE models)</b>	Exhaust tailpipe – single, Chrome
	Interior trim, Satin Silver

All M Sport models	
<b>(in addition to SE models)</b>	17" light alloy Double-spoke style 207M with mixed tyres
	Door sill finishers with M designation, Chrome plated
	Extended lighting
	Exterior trim, High-gloss Shadowline
	Handbrake lever, gear lever knob and gaiters in leather
	Headlining, Anthracite
	Interior trim, Aluminium Glacier Silver
	M aerodynamic bodystyling
	M Sport multi-function leather steering wheel, three-spoke
	M Sport suspension
	Rear-view mirror, automatically dimming
	Run-flat tyres with Tyre Puncture Warning System (TPWS)
	Sport seats in Flashpoint cloth/Sensatec, front

Weight		116i	118i	116d	118d	120d	123d
Unladen, EU <sup>1</sup>	kg	1330 [1360]	1350 [1375]	1380	1395 [1420]	1450 [1450]	1495 [1495]
Unladen, EU <sup>1</sup> (3-door)	kg	1320 [1350]	1340 [1365]	1370	1385 [1410]	1440 [1440]	1485 [1485]
Max. permissible	kg	1755 [1785]	1775 [1800]	1805	1830 [1855]	1875 [1880]	1920 [1920]
Max. permissible (3-door)	kg	1745 [1775]	1765 [1790]	1795	1820 [1845]	1865 [1870]	1910 [1910]
Permitted load	kg	500	500	500	510	500	500
Permitted axle load, front/rear	kg	855/1020	855/1020	885/1040	885/1040	905/1050	920/1060
Permitted axle load, front/rear (3-door)	kg	855/1020	855/1020	885/1040	885/1040	905/1050	920/1060
Permitted roof load	kg	75	75	75	75	75	75
Permitted trailer load, unbraked	kg	650	670	680	690	720	740
Permitted trailer load, braked, max. 12% gradient	kg	1200	1200	1200	1200	1200	1200
Permitted trailer load, braked, max. 8% gradient	kg	1200	1200	1200	1200	1200	1200
Permitted towbar download	kg	75	75	75	75	75	75

Engine <sup>2,3</sup>							
Cylinders/valves		4/4	4/4	4/4	4/4	4/4	4/4
Capacity	cm <sup>3</sup>	1995	1995	1995	1995	1995	1995
Stroke/bore	mm	90.0/84.0	90.0/84.0	90.0/84.0	90.0/84.0	90.0/84.0	90.0/84.0
Max. output	kW/rpm	90/6000	105/6000	85/4000	105/4000	130/4000	150/4400
	hp/rpm	122/6000	143/6000	116/4000	143/4000	177/4000	204/4400
Max. torque	Nm/rpm	185/3000-4250	190/4250	260/1750-2500	300/1750-2500	350/1750-3000	400/2000-2250
Compression ratio	:	12.0	12.0	16.5	16.5	16.5	16.5

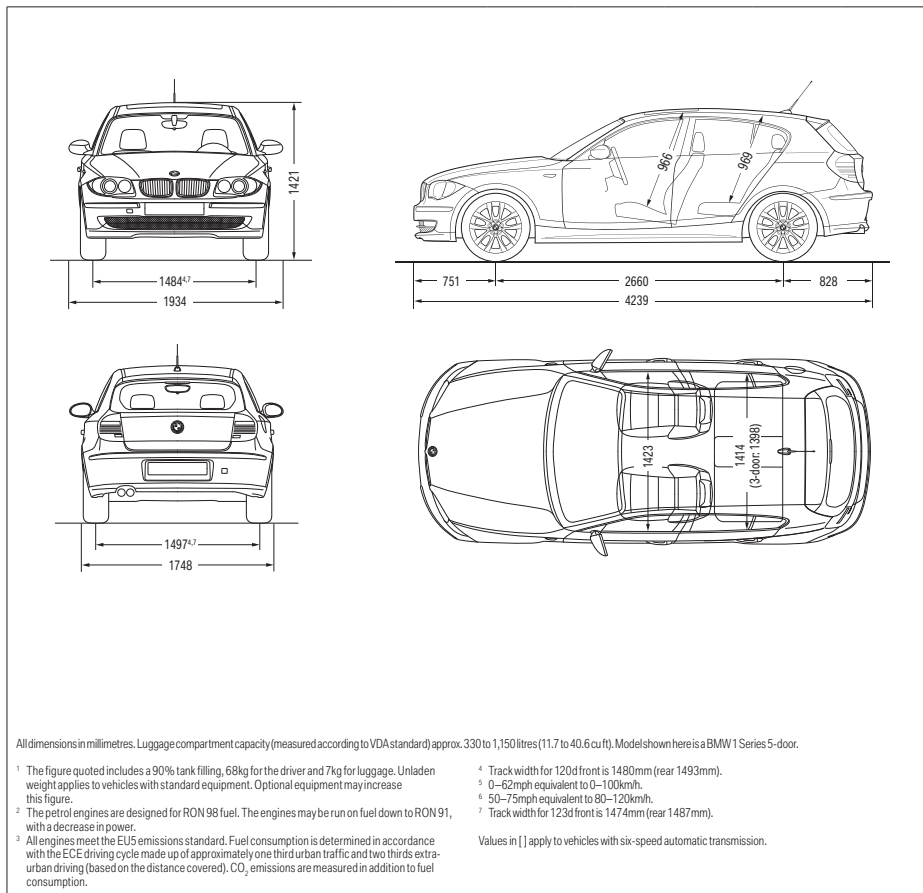
Transmission							
Standard transmission ratios	I/II:1	4.32/2.46	4.32/2.46	4.00/2.11	4.00/2.11	5.14/2.83	5.08/2.80
	III/IV:1	1.66/1.23	1.66/1.23	1.38/1.0	1.38/1.0	1.80/1.26	1.78/1.26
	V/VI/R:1	1.00/0.85/3.94	1.00/0.85/3.94	0.78/0.65/3.19	0.78/0.65/3.19	1.00/0.83/4.64	1.00/0.84/4.61
Final drive ratio	:	3.39	3.39	3.07	3.07	2.56	2.79

Performance							
Top speed	mph	127 [126]	130 [130]	124	130 [130]	142 [140]	148 [147]
	km/h	204 [202]	210 [210]	200	210 [210]	228 [226]	238 [236]
Acceleration 0–62mph <sup>4</sup>	s	9.9 [10.8]	8.8 [9.3]	10.3	9.0 [9.1]	7.6 [7.8]	7.0 [7.1]
Acceleration 0–62mph <sup>4</sup> (3-door)	s	9.8 [10.7]	8.7 [9.2]	10.2	8.9 [9.0]	7.5 [7.7]	6.9 [7.0]
Acceleration 50–75mph <sup>4</sup> in 4th/5th gear (with standard transmission)	s	9.2/11.8	9.0/11.6	8.6/11.7	7.7/10.1	6.4/8.0	5.5/6.6
Acceleration 50–75mph <sup>4</sup> in 4th/5th gear (with standard transmission) (3-door)	s	9.1/11.7	8.9/11.5	8.5/11.6	7.6/10.0	6.3/7.9	5.4/6.5

Fuel consumption <sup>2,3</sup>							
Urban	mpg	35.8 [32.5]	35.8 [32.5]	52.3	52.3 [42.2]	47.9 [42.2]	44.1 [40.9]
	l/100km	7.9 [8.7]	7.9 [8.7]	5.4	5.4 [6.7]	5.9 [6.7]	6.4 [6.9]
Extra-urban	mpg	55.4 [52.3]	55.4 [52.3]	70.6	70.6 [62.8]	68.9 [62.8]	64.2 [60.1]
	l/100km	5.1 [5.4]	5.1 [5.4]	4.0	4.0 [4.5]	4.1 [4.5]	4.4 [4.7]
Combined	mpg	46.3 [42.8]	46.3 [42.8]	62.8	62.8 [53.3]	60.1 [53.3]	55.4 [51.4]
	l/100km	6.1 [6.6]	6.1 [6.6]	4.5	4.5 [5.3]	4.7 [5.3]	5.1 [5.5]
CO <sub>2</sub> emissions	g/km	143 [154]	143 [154]	118	119 [140]	125 [140]	135 [145]
Tank capacity, approx.	l	53	53	51	51	51	51

Wheels	116i	118i	116d	118d	120d	123d
Tyre dimensions	195/55 R16	205/55 R16	195/55 R16	195/55 R16	205/55 R16	205/50 R17 225/45 R17
Wheel dimensions	6.5 J x 16	7.0 J x 16	6.5 J x 16	6.5 J x 16	7 J x 16	7 J J7.5 J x 17
Material	Light alloy	Light alloy	Light alloy	Light alloy	Light alloy	Light alloy

Electrical system							
Battery capacity	Ah	80 [70]	80 [70]	70	80	80	80
Alternator output	A	180	180	180	180	180	180
	W	2520	2520	2520	2520	2520	2520



All dimensions in millimetres. Luggage compartment capacity (measured according to VDA standard) approx. 330 to 1,150 litres (11.7 to 40.6 cu.ft). Model shown here is a BMW 1 Series 5-door.

<sup>1</sup> The figure quoted includes a 90% tank filling, 68kg for the driver and 7kg for luggage. Unladen weight applies to vehicles with standard equipment. Optional equipment may increase this figure.

<sup>2</sup> The petrol engines are designed for RON 98 fuel. The engines may be run on fuel down to RON 91, with a decrease in power.

<sup>3</sup> All engines meet the EU5 emissions standard. Fuel consumption is determined in accordance with the ECE driving cycle made up of approximately one third urban traffic and two thirds extra-urban driving (based on the distance covered). CO<sub>2</sub> emissions are measured in addition to fuel consumption.

<sup>4</sup> Track width for 120d front is 1480mm (rear 1493mm).

<sup>5</sup> 0–62mph equivalent to 0–100km/h.

<sup>6</sup> 50–75mph equivalent to 80–120km/h.

<sup>7</sup> Track width for 123d front is 1474mm (rear 1487mm).

Values in [ ] apply to vehicles with six-speed automatic transmission.

# AN INTRODUCTION TO LONDON 2012.

## Why we were selected as the Official Automotive Partner for London 2012.

Our partnership with London 2012 is a natural fit for the business. Our emission lowering technologies, through the EfficientDynamics programme, will play a role in aiming to deliver the most sustainable Games possible. Our range of the world's most fuel efficient premium cars will transport the Olympic Family at the Games – including athletes, officials and the media – and shine a light on the future of mobility with our ground-breaking developments in the next generation of transportation.

## The Games time fleet.

BMW Group's role is incredibly important to the success of the Games. The fleet that will mobilise the Olympic and Paralympic Games will be over 4,000 vehicles strong. A huge undertaking and commitment. Conventional and hybrid vehicles from the range will be used in the vast Olympic Games fleet and BMW Group will showcase electric vehicles as part of our role in London 2012.

## We're proud to be a partner.

As a major investor and employer in the UK, our partnership will be an inspiration for our customers, employees and dealers, as we continue to develop market-leading innovations and technologies to shape the future of design, development and driving pleasure.

We are immensely proud of our partnership.

## BMW London 2012 Performance Team.

BMW is proud to support Team GB and ParalympicsGB athletes through the BMW London 2012 Performance Team. We want to help the athletes qualify and succeed at the Games. Behind our intelligent technologies lies an understanding that even the smallest change can make a big difference to performance – something that every athlete knows. We'll be working with our London 2012 hopefuls to see how we can actively support them through our world-leading technical expertise. It's going to be an amazing journey.



# MEET THE BMW LONDON 2012 PERFORMANCE TEAM.



## MARTYN BERNARD High Jump

My parents got me into athletics as a way of channelling my energy, and I haven't looked back. I won my first major medal in 2005 and am now focusing on London 2012, along with studying for my Law degree.



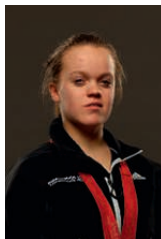
## MARK HUNTER Rowing

I think the turning point in my career was moving to the prestigious Leander Club, which gave me the opportunity to row with the best athletes in the world. I strive to keep improving and, having already won gold in Beijing 2008, a win in London 2012 would be extra special.



## ALISTAIR BROWNLEE Triathlon

I still remember the thrill of being told I could win medals by my local swimming club. The joy of being outdoors and active led me to my first triathlon when I was 10, and winning the World Junior Championships in 2006 drove me to pursue my Olympic dream. Hopefully I'm on track for London 2012.



## ELLIE SIMMONDS Paralympic Swimming

I was inspired to take up competitive swimming by the Athens Paralympic Games in 2004. After winning two gold medals in Beijing 2008, I became the youngest person to be awarded an MBE, aged 14. Since then, I've been working hard towards London 2012.



## JONATHAN BROWNLEE Triathlon

I started swimming at 4, but when I was 10 my Uncle was in a local triathlon and I couldn't wait to try it too. A month later I took part in my first event. That summer I watched Cathy Freeman race to victory in Sydney 2000 – and I can still remember every second.



## LOUIS SMITH Gymnastics

My first Olympic Games was Beijing 2008, where I won the bronze for the men's pommel horse. That made me the first Briton to win a medal in the individual gymnastics since 1908. Since then I've picked up medals in 2009 and 2010. So hopefully I'm on track for London 2012.



## TOM DALEY Diving

I started diving by chance when I was 7, and began competing just before my 9th birthday. There have been lots of highlights since then, including winning the World Championships when I was 15 and picking up two gold medals at the 2010 Commonwealth Games Delhi.



## TOM AGGAR Paralympic Rowing

I started rowing after an accident in 2006 and won my first event at the British indoor championships that year. In 2007 I won gold in a world best time at the World Championships in Munich and I have recently won the International Rowing Federation's first 'Paralympic Rower of the Year' award – my next goal is gold at London 2012.

## BMW LONDON 2012 PERFORMANCE TEAM

More athletes are coming soon. You can follow their journey at [bmw.co.uk/london2012](http://bmw.co.uk/london2012)



official partner of the  
Olympic and Paralympic Games

**Condition Based Service.** A key feature in most BMW models, Condition Based Service (CBS) signals an innovative leap forward in BMW Service diagnostic technology. The way it works is simple. CBS uses sensors to constantly monitor the areas of your BMW that are subjected to wear and tear. Based on the results of the data, CBS decides the extent to which servicing is necessary. This information is then stored in your vehicle's key. Using a KeyReader, BMW Service staff can download information to provide an accurate analysis of your vehicle. This means your BMW goes for a service only when it needs to, saving you an immeasurable amount of both time and money.

**Service Intelligence.** BMW Approved Technicians are experts in the use of diagnostic equipment, which quickly identifies if and why the vehicle is running at anything less than peak efficiency. This leads to rapid identification and rectification.

**Service Assurance.** For additional peace of mind, take comfort in the fact that every new BMW is covered by a three-year warranty<sup>3</sup> that includes BMW Emergency Service throughout Europe. For more information on BMW Service, please contact your local BMW Dealer, BMW Service Authorised Workshop or visit [www.bmw.co.uk/service](http://www.bmw.co.uk/service) or [www.bmw.ie](http://www.bmw.ie).

## JOY IS BMW SERVICE.



**BMW Service Inclusive.** Wouldn't it be good to know all your servicing costs in advance? Well, that's exactly what BMW Service Inclusive<sup>1</sup> provides and for a low one-off payment.

BMW Service Inclusive and Service Inclusive Plus are transferable to subsequent owners within the time and mileage period, which can enhance the resale value of your car.<sup>2</sup>

BMW Service Inclusive<sup>1</sup> lasts for 5 years or 60,000 miles (whichever occurs first) and covers all your vehicle's servicing requirements. Alternatively you can choose BMW Service Inclusive<sup>1</sup> Plus, which in addition to servicing also covers maintenance items such as brake pads, brake discs and windscreen wipers. And whenever servicing and maintenance work is carried out on your BMW, you can be sure that it will only be done by fully qualified BMW Service Approved Technicians at one of over 150 BMW Service Authorised Workshops around the country. Furthermore, only Genuine BMW Parts are used – each covered by a two year warranty.

<sup>1</sup> Service Inclusive and Service Inclusive Plus are available as cost options. See price list for details. For further information see the Service Inclusive brochure.

<sup>2</sup> For further information, please contact your local BMW Dealer.

<sup>3</sup> Every new BMW registered within the Republic of Ireland is covered by a two-year manufacturer's warranty – for details, please contact your local BMW Dealer.



**BMW Assist.** BMW Assist provides telematic and online services that are fully integrated with the BMW navigation and Bluetooth telephone systems to offer enhanced services. This provides you and your passengers access to key information from within the vehicle, helping you keep safe and in touch. In the event of an emergency, a 999 SOS call can be triggered manually or in extreme situations automatically. Details of your vehicle and location will be sent directly to a 999 SOS Emergency Service centre so help can be sent without delay. A similar function is also available to connect you to a BMW Service Centre should you require roadside assistance. If you have locked your keys in your car, or cannot recall if you have locked your car, with Remote Services the BMW Service Centre can lock or unlock your vehicle remotely.

telephone numbers are transferred to your vehicle. There is also the facility to send addresses and telephone numbers directly to your vehicle yourself with Google Maps. Using the in-car portal on your vehicle's Control Display you can check the latest news and weather, or access the Google Local Search from where you can look-up business addresses in the car yourself. For vehicles with the BMW Professional Multimedia Navigation system, the Routes service provides a route planning facility from the comfort of home, or access to download a variety of predefined BMW Routes across Europe.

Information-based services are also included, you can make an Information Plus call to request addresses and

BMW Assist services are free of charge for three years on any new BMW equipped with Bluetooth telephone preparation and an optional navigation system. Services are not available in the Republic of Ireland, Isle of Man and the Channel Islands. Terms and conditions apply. Some services are available in other European countries.



## SHAPING THE FUTURE – RESPONSIBLY.

The BMW Group has been ranked the most sustainable automotive company worldwide in the Dow Jones Sustainability Index for the sixth time in a row. Sustainability is an integral part of our value chain – it encompasses every stage from the development of fuel-saving and alternative vehicle concepts to environmentally-friendly production processes and recycling. Our research and development philosophy BMW EfficientDynamics delivers tangible benefits to customers, our climate and the environment. This is reflected in the reduction of CO<sub>2</sub> emissions by nearly 30 % across our European fleet of new cars since 1995.



## JOY COMES IN MANY FORMS.



**BMW Emergency Service.** BMW Emergency Service is the only roadside and assistance programme designed specifically for BMW vehicles offering an exceptional range of benefits and services. It is available 24 hours a day, 7 days a week and utilises a dedicated fleet of BMW Approved Technicians, equipped with Genuine Parts and tools, ensuring that you and your vehicle receive the best possible care in the event of any motoring emergency. This tailor-made programme has been specifically designed to meet the needs of BMW drivers travelling in the UK, Republic of Ireland and Continental Europe giving complete reassurance and peace of mind. Every new BMW is covered for three years.



**BMW Financial Services.** Chances are you've already decided on the BMW you want to drive. Now discover the perfect finance solution to get you behind the wheel. BMW Financial Services offers a range of tailor-made finance and insurance packages designed to suit you and your budget. And if you opt for insurance from BMW Financial Services, you'll be prepared for all eventualities. For more information, contact your local BMW Dealer. Alternatively visit [www.bmwfs.co.uk](http://www.bmwfs.co.uk) or call us on 0870 5050 150.

Our comprehensive range of finance and insurance products includes:

- BMW Select (Personal Contract Purchase)
- BMW Hire Purchase
- BMW Contract Hire
- BMW Leasing
- BMW Car Insurance
- BMW Income Protection
- BMW Shortfall



**BMW Magazine.** Every new BMW customer receives a complimentary subscription to BMW Magazine. This publication features all the latest news and developments from BMW, together with a variety of driving and lifestyle features.

**BMW News.** To ensure you're one of the first to hear the latest BMW news and developments, BMW UK offer an email programme. Sign-up at [www.bmw.co.uk/newsletter](http://www.bmw.co.uk/newsletter)



**BMW World, an iconic building in the Munich skyline.** The BMW World is a true brand experience where it's possible to marvel at the historic BMWs in the museum, learn about our engineers' newest innovations and take a tour of the plant to experience with your own eyes the cutting-edge and exacting methods used to create a BMW.

Car manufacturing requires a great deal of water, which is why we've developed an intelligent circulatory system for our factories that ensures water is re-used as often as possible. The dream of a manufacturing process that does not produce any waste water has already been made a reality at our engine plant in Steyr. In 2008, 733,500 engines were manufactured without producing a single drop of waste water.

Sustainability is taken very seriously at the BMW Group. For this reason, we prioritise environmentally-friendly methods of transport such as rail and shipping and work towards capacity optimisation. Each year, we cover around 15.8 billion tonne kilometres transporting materials and new vehicles. Of this, 79 % of the total transported volume is delivered by sea – which benefits both road traffic and the environment.

The BMW Group has their sights set on tomorrow. Your BMW is part of a comprehensive recycling concept. Every single vehicle can be easily and economically recycled. Please contact your BMW Dealer on all matters regarding the return of your end-of-life vehicle. For more information visit

➤ [www.bmw.co.uk/EfficientDynamics](http://www.bmw.co.uk/EfficientDynamics)  
 ➤ [www.bmwgroup.com/sustainability](http://www.bmwgroup.com/sustainability)

More about BMW

[www.bmw.co.uk](http://www.bmw.co.uk)  
[www.bmw.ie](http://www.bmw.ie)



The Ultimate  
Driving Machine



The models, equipment and possible vehicle configurations (standard and optional equipment) illustrated in this brochure reflect the specifications of vehicles supplied by BMW AG to the German market. In other EU member states, individual models' equipment content and possible configurations of standard and optional equipment may vary. For precise information on the various country-specific versions available, please contact your local BMW Dealer.

Part number: 94 23 1 118 100.

© BMW AG, Munich/Germany. Not to be reproduced wholly or in part without written permission of BMW AG, Munich.

BMW recommends Castrol