

The BMW 1 Series
Sports Hatch

www.bmw.co.uk
www.bmw.ie



The Ultimate
Driving Machine



THE BMW 1 SERIES SPORTS HATCH.

3-DOOR AND 5-DOOR.

BMW EfficientDynamics
Less emissions. More driving pleasure.



A TRUE REFLECTION OF PURE INDIVIDUALITY.

The BMW 1 Series Sports Hatch 3-door and 5-door are ready to conquer the city streets. The BMW TwinPower Turbo engines deliver a powerful forward thrust and make an impressive statement by their outstanding performance to fuel consumption ratio. Thanks to low emissions, such as a mere 99g CO₂ per kilometre in the BMW 116d EfficientDynamics model, every drive can be enjoyed to the full. With both the BMW 1 Series Sports Hatch 3-door and 5-door, you have comprehensive opportunities to bring your own character to the street in style with the ES, SE, Urban, Sport or M Sport models. Highlight your individuality more dynamically than ever in the BMW 1 Series Sports Hatch.

BMW EfficientDynamics
Less emissions. More driving pleasure.



The BMW 1 Series Sports Hatch

EXPRESS YOUR PERSONALITY.

- 06 The BMW 1 Series Sports Hatch 5-door**
Always original.
- 08 Urban and Sport**
Maximum individuality.
- 14 Innovative technologies**
BMW EfficientDynamics and BMW ConnectedDrive in the BMW 1 Series Sports Hatch.
- 18 The BMW 1 Series Sports Hatch 3-door**
Endless possibilities.
- 20 M Sport**
Maximum driving pleasure.

Technology

INNOVATIONS THAT SET TRENDS.

- 26 BMW ConnectedDrive**
So connected, you're free.
- 30 BMW EfficientDynamics**
Technology for less fuel consumption and an even better driving experience.
- 32 BMW TwinPower Turbo engines**
Maximum performance from minimum fuel consumption.
- 34 M Performance**
M genes included. The BMW M135i.
- 36 Chassis and safety**
Innovative systems for more driving pleasure.

Equipment

AS INDIVIDUAL AS YOU ARE.

- 40 ES / SE / EfficientDynamics**
- 42 Urban**
- 44 Sport / Sport Plus package**
- 46 M Sport / M Sport Plus package**
- 48 Colours, upholstery and interior trims**
- 50 Upholstery and interior trims**
- 52 Equipment packages**
- 54 Standard / Optional equipment**
- 65 Genuine BMW Accessories**

Overview

THE BMW 1 SERIES AT A GLANCE.

- 66 Technical data**
- 68 BMW Service and BMW Brand Experience**
Exclusive offers for BMW customers.

www.bmw.co.uk
www.bmw.ie

Editorial

DRIVING THE CITY.

Cities thrive on diversity, on different cultures and lifestyles, on the courage to break new ground and an openness to unusual ideas. They exude a vibrant energy that keeps everything in motion – the kind of energy that inspired the designers and developers of the BMW 1 Series Sports Hatch.

Dynamic lines, compact dimensions – whether as a functional 5-door or a sporty 3-door, it's a design that reflects the power for progress of a modern metropolis. Technology behind the BMW 1 Series Sports Hatch raises the bar by delivering extraordinary efficiency and a unique driving experience. But, above all, its distinctive character makes it a symbol of a contemporary, urban lifestyle.

The BMW 1 Series Sports Hatch is of a modern, extroverted, sporty and confident design. It stands out from the crowd, even on the busiest of roads. Thanks to the broad range of individualisation options and models available including ES, SE, Urban, Sport and M Sport, you can set your very own style. Experience a vehicle with personality, perfectly suited to individuals who themselves are set apart from the crowd.

Find out more about the BMW 1 Series Sports Hatch at:

www.bmw.co.uk/1series

Specifications of models shown:

BMW 118i Sport.
Engine: BMW TwinPower Turbo four-cylinder petrol engine
Power output: 170hp (125kW)
Wheels: 17" light alloy Star-spoke style 379, in Orbit Grey and burnished metal
Exterior colour: Crimson Red
Upholstery: Track cloth in Anthracite with Red highlight
Interior trim: Black, High-gloss with Coral Red, Matt finisher

BMW 118d Urban.

Engine: BMW TwinPower Turbo four-cylinder diesel engine
Power output: 143hp (105kW)
Wheels: 17" light alloy V-spoke style 412, in Aspen White and burnished metal
Exterior colour: Midnight Blue metallic
Upholstery: Metro cloth/leather in Silver/Pearl Grey
Interior trim: White Acrylic glass with Oxide Silver, Matt finisher

BMW 118d M Sport.

Engine: BMW TwinPower Turbo four-cylinder diesel engine
Power output: 143hp (105kW)
Wheels: 18" light alloy M Star-spoke style 386 M
Exterior colour: Estoril Blue metallic
Upholstery: Hexagon cloth/Alcantara in Anthracite
Interior trim: Aluminium Hexagon with Estoril Blue finisher



BMW UK on Facebook
www.facebook.com/bmwuk
www.facebook.com/bmw.ireland



ALWAYS ORIGINAL.

THE BMW 1 SERIES SPORTS HATCH 5-DOOR.



Freddie Lund, 27.

Adam Lund, 32.

ON DESIGN AND INDIVIDUALITY.

UNIQUE DESIGN, COUNTLESS POSSIBILITIES.

THE EPITOME OF DIVERSITY, MODERNITY AND FREEDOM; FULL OF VARIETY AND NEW IDEAS; ALWAYS ON THE MOVE AND UP TO DATE. THIS PERFECTLY SUMS UP THE BMW 1 SERIES SPORTS HATCH – AND THE MODERN LIFESTYLE OF ITS DRIVERS.

The BMW 1 Series Sports Hatch stands out due to its independent, modern appearance. Its dynamic design, compact dimensions and muscular look make it the perfect urban explorer. At the rear, the powerfully designed wheel arches emphasise the classic BMW rear-wheel drive. Shapely contours steer the observer's eye forward to the vehicle's unmistakable front where sloping lines accentuate the headlights to give the BMW a look of pure determination. However, the BMW 1 Series Sports Hatch is not only impossible to overlook

because of its design, but also because of its extraordinary interior: it features a generous amount of space and plays host to the innovative BMW EfficientDynamics and BMW ConnectedDrive technologies for exceptional driving pleasure. The unique feeling of being behind the wheel of the BMW 1 Series Sports Hatch is supported by a series of additional design highlights. In addition to ES and SE models, you can choose from three design options, Urban, Sport and M Sport, which encompass an array of exterior and interior elements. All options provide

the highest level of comfort and deliver the same dynamic ride, but in visual terms they're absolutely distinct. They offer individual design themes featuring exclusive materials and colours that can be combined however you choose within each model. What's more, the M Sport model delivers maximum sportiness and highlights the athletic character and focussed look of the vehicle.



The Urban model.

Elements in White typify the Urban model: the White **Kidney grille [01]** with a Chrome finish, **17" light alloy wheels in Aspen White and burnished metal [03]**, optional White mirror caps. The interior is distinguished by the newly developed **White Acrylic glass interior trim [04]**, **Metro cloth/leather upholstery [02]** as well as Blue or White welcome lighting. More information on the Urban model can be found on pages 42/43.

TAKE YOUR OWN STYLE TO THE STREETS.

THE URBAN MODEL FOR THE BMW 1 SERIES SPORTS HATCH 3-DOOR AND 5-DOOR.

As a model, Freddie Lund travels to all the world's major cities. Living in London, he loves the vibrant creativity of a major city that's constantly reinventing itself. He has found his ideal car in the BMW 1 Series Urban model – for a drive through the night life of Soho, to acting school or to the University of Leeds where he studies history. The design of the Urban model is as varied as Freddie Lund's life. The equipment of his choice:

the Midnight Blue metallic paint and 17" light alloy wheels in Aspen White and burnished metal, which are exclusive to the Urban model. The unusual design elements and innovative materials really make the BMW 1 Series Sports Hatch stand out from the crowd and are a fitting expression of Freddie's 21st century lifestyle.



The Sport model.

The Sport model is characterised by exterior elements in High-gloss Black: including the **front air vents [01]**, the optional **Black exterior mirror caps [02]** and the **Kidney grille [03]** with extra-wide High-gloss Black vertical slats. The interior design features a series of Red characteristics, such as the **Red gauge [04]** on the speedometer and Red contrast stitching on the Sport multi-function leather steering wheel. More information on the range of equipment included in the Sport model can be found on pages 44/45.

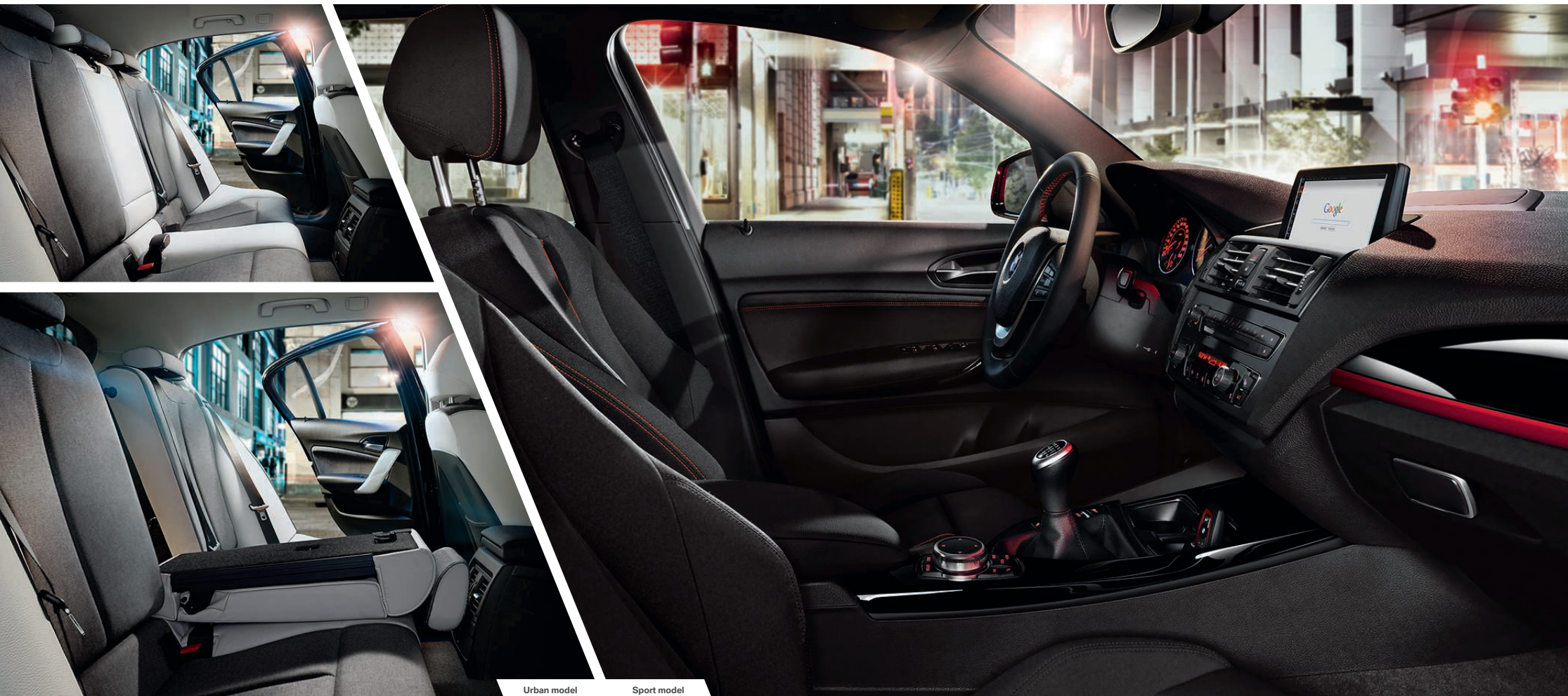
REV UP YOUR DAY.

THE SPORT MODEL FOR THE BMW 1 SERIES SPORTS HATCH 3-DOOR AND 5-DOOR.

Adam Lund regularly travels between London and Italy, supervising projects for his company that specialises in the trade of Italian marble. Even in his spare time, the 32-year-old sports enthusiast is constantly in action. To complement his dynamic lifestyle, Adam chose the BMW 1 Series Sports Hatch, kitted out with Crimson Red non-metallic

exterior paint, 17" light alloy Star-spoke style wheels in Orbit Grey and burnished metal and Black mirror caps. These stylish details make the BMW 1 Series Sports Hatch the perfect car for Adam Lund, whether he's heading to rugby training, his next business meeting or just driving into town.





Urban model

Sport model

DESIGN. IT'S ALL ABOUT THE DRIVER.

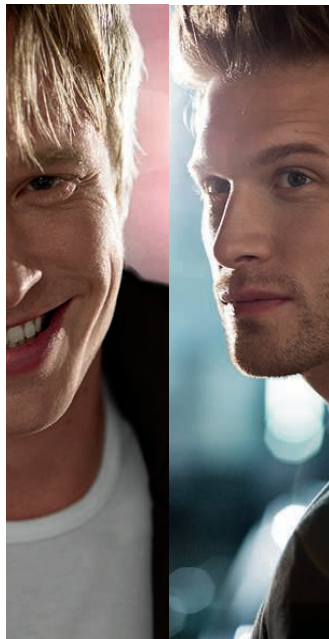
THE DESIGN OF A SPACE SPEAKS VOLUMES ABOUT PERSONALITY. THE SELECTION OF MATERIALS, COLOURS, AND EACH ACCESSORY, HAS A STORY TO TELL. SPACE BECOMES A REFLECTION OF YOUR INDIVIDUALITY.

Give yourself plenty of time and let the interior of the BMW 1 Series Sports Hatch really sink in. You can design this vehicle to perfectly reflect your own personal taste. There are virtually endless possibilities.

Emphasise your individual style with the choice of ES, SE and M Sport, as well as the Urban and Sport models shown here, and add your own touch from a range of exclusive materials and colours that can be selected as you like within each model. The BMW 1 Series Sports Hatch is all about the needs of the driver, with countless combination possibilities for the optimal driver orientation. The moment you enter a BMW 1 Series Sports Hatch, you immediately notice the intuitively arranged controls and the greatly improved all-round visibility. The new iDrive Touch Controller (shown here), available with the optional BMW Professional Media package, features a touch sensitive interface

with signature recognition, which allows the inputting of numbers and letters for various search functions. The door pockets, where bottles with a volume of up to one litre can be stored, and the cup holders, conveniently located in front of the gear lever, offer additional storage options. Yet the BMW 1 Series Sports Hatch offers more flexibility in the rear and the luggage compartment as well: the backrest can fold down in a 40:20:40 split so you and your passengers can enjoy four generously sized seats even when the rear central armrest is folded down. All this results in an interior whose diverse and exciting design gives fresh expression to your own individual style every day.

CAN EFFICIENCY BE DYNAMIC?



CAN DYNAMICS BE EFFICIENT? ANSWERS TO QUESTIONS THAT AFFECT US.

THE REQUIREMENTS ARE CLEAR: WE HAVE TO CONSERVE RESOURCES, LOWER EMISSIONS, ACT SUSTAINABLY. SOUNDS SENSIBLE, BUT WHERE DOES THAT LEAVE OUR DRIVING PLEASURE? QUESTIONS ABOUT BMW EFFICIENT DYNAMICS POSED BY ADAM AND FREDDIE LUND.

Adam Lund:
Efficiency and dynamics... isn't that a contradiction?

BMW:
On the contrary: BMW EfficientDynamics combines both of these things. This technology lowers emissions but still ensures impressive driving dynamics. This is exemplified best by the BMW TwinPower Turbo four-cylinder engines, which contribute towards the outstanding performance to fuel consumption ratio.

Freddie Lund:
What makes the BMW 1 Series Sports Hatch more efficient than comparable vehicles?

The driver holds the key to greater fuel efficiency by driving in a more economical manner. BMW developed the ECO PRO mode for this reason, which enables fuel consumption to be reduced by up to 20%¹. It gives the driver feedback and recommendations on their driving behaviour. In this mode, what is known as the bonus mileage is displayed in the On-Board Computer. It tells the driver how many miles they have gained by

BMW EfficientDynamics in the BMW 1 Series Sports Hatch.
BMW EfficientDynamics includes the BMW TwinPower Turbo four-cylinder engines as well as Auto Start-Stop, which is now available in conjunction with optional eight-speed automatic transmission. What's more, the BMW 1 Series Sports Hatch is the only car in its class to offer eight-speed automatic transmission. Another highlight is the Drive Performance Control button. Along with ECO PRO mode, it also provides Sport+, Sport and Comfort modes.

following the tips given. Plus if you opt for the Black panel display, the rev counter also includes an EfficientDynamics display. It shows how far the accelerator pedal should be depressed to achieve efficient acceleration.

Adam Lund:
It sounds a bit like a computer game.

Yes, you could compare it to scoring points in a computer game. At BMW, as you know, driving

pleasure is a priority. And if something's fun, it motivates you to drive better – or in this case, more efficiently.

Freddie Lund:
So, as the driver, I ultimately determine how efficient my car is?

Yes and no. Basically, BMW leaves it up to the driver to decide how much they want to modify their driving style. However, when they activate the ECO PRO mode, the vehicle characteristics also change. For example, there's also a feature that stops the automatic air conditioning and the seat heating running on the highest setting. But the BMW 1 Series Sports Hatch can still perform at full power. Fuel efficiency remains a top priority at all times, thanks to a range of standard BMW EfficientDynamics technologies.

¹ Dependent on individual driving style, findings from an internal BMW consumption study.



BMW EfficientDynamics
Less emissions. More driving pleasure.

BMW CONNECTED DRIVE.

YOUR PERSONAL DECLARATION OF INDEPENDENCE.



Being online everywhere, always keeping an eye on everything and enjoying your favourite music at all times – things nobody wants to miss anymore. That's why BMW ConnectedDrive Services have perfected the integration of driver, vehicle and the outside world. Enjoy a great variety of music on every drive from the standard DAB tuner to the AUPEO! Personal Radio which will adjust the music being played to your preferences at the touch of a button. Real Time Traffic Information (RTTI) is an innovative traffic service that informs you about the current traffic conditions comprehensively and in real time. Standard BMW Emergency Call is one of the features ensuring more safety. In a critical situation, the condition of the vehicle is analysed and, if required,

an emergency call, as well as GPS data, is automatically transmitted. BMW ConnectedDrive Services supports you with countless services, apps, and driver assistance systems for nearly every driving situation.

BMW ConnectedDrive Services.

The BMW 1 Series Sports Hatch offers a range of innovative optional equipment: the **Reversing Assist camera [01]** provides improved safety and convenience by displaying an image of the area behind the vehicle. **BMW Online Services [02]** lets you stay in touch with your emails plus gives you access to localised information such as news, sport and weather. Additionally, you can use Online Search for locating points of interest then transfer them directly into the navigation system. With **BMW Apps [03]** you can stay in touch with friends via Facebook, Twitter and email, plus broaden your music choices even further by tuning in to a web radio station.



M Sport

PURE INDIVIDUALITY, THRILLING DYNAMICS AND ENDLESS POSSIBILITIES. CAN YOU FEEL THE PULSE OF THE CITY? THEN IT'S TIME TO GET BEHIND THE WHEEL.

ENDLESS POSSIBILITIES. THE BMW 1 SERIES SPORTS HATCH 3-DOOR.

Every city has a rhythm of its own, influenced by the people who live there. With the BMW 1 Series Sports Hatch 3-door, you can set the pace and make every day as dynamic as you like. It owes its muscular appearance to a compact design and remarkable styling. It's clear from the moment you lay eyes on it that it can take on any challenge, thanks to innovative BMW EfficientDynamics and BMW ConnectedDrive technologies. As with the BMW 1 Series Sports Hatch 5-door, you can also choose between ES and SE, as well as Urban, Sport and M Sport models (M Sport shown here).

These perfectly orchestrated designs will highlight the personality of your BMW 1 Series Sports Hatch 3-door and accentuate its sporty exterior and interior. Whatever you choose, there are no limits to your individuality.



THE SPORTY DESIGN OF THE BMW 1 SERIES SPORTS HATCH 3-DOOR.

A WORLD RECORD IN INDIVIDUAL DESIGN.

If you've got character, you're sure to stand out from the crowd. Take the BMW 1 Series Sports Hatch 3-door model, for example. It is unmistakable as it cruises the city streets with its long wheelbase, short overhangs and sporty proportions. Its distinct shoulder line and extended windows further accentuate its sophisticated character.

The dynamic features of the M Sport model (shown here) strengthen the BMW's personality even further. It's available with both the BMW 1 Series Sports Hatch 3-door and 5-door. With the M Sport suspension the vehicle sits 10 millimetres closer to the ground for tighter road holding and a noticeably more agile drive. On top of that,

the front and rear aprons, sporty side skirts and Chrome tailpipe, unique to the M Sport model, cultivate the powerful look of a metropolitan individualist. With the addition of the M Sport Plus package, you can create an even more breathtaking vehicle. On the exterior, elements such as the Xenon Headlights and Headlight wash, Sun protection glass and 19" M Sport light alloys with M Sport braking system create a powerful impression, while in the interior, the harman/kardon loudspeaker system allows for superb sound. Either with or without this package, the M Sport model will make you stand out from the crowd.



This is where the BMW TwinPower Turbo engines come in, with a unique ratio of rousing power delivery to exceptional efficiency. With the first-class engine in the BMW M135i you can look forward to maximum driving pleasure, together with the optimal 50:50 weight distribution and rear-wheel drive, which is unique in its class. xDrive is now available on the BMW 1 Series Sports Hatch, with its intelligent all-wheel-drive system offering safety and security even in the most difficult of conditions. Equally as impressive is the BMW 116d EfficientDynamics model which is especially fuel efficient and features a modest CO₂ emissions output of just 99g. With efficiency this good, the dynamics are all the more thrilling. The BMW 1 Series Sports Hatch guarantees maximum driving

pleasure, providing brilliant steering precision, incomparable agility and maximum dynamism for the best driving comfort to date. Savour the intensity of the BMW 1 Series Sports Hatch – every day.

YOU GET THE MOST OUT OF EVERY DAY – THE BMW 1 SERIES SPORTS HATCH GETS THE MOST OUT OF EVERY MILE.

**MORE ADRENALINE.
MORE SAFETY.
LESS EMISSIONS.**



M Sport

Even before you take a seat in the BMW 1 Series Sports Hatch 3-door, its frameless doors convey an impression of class and premium quality which are confirmed the moment you get in. The interior of the BMW 1 Series Sports Hatch 3-door model is not only tailored to your exact needs, but also to your personal taste. All the controls in the cockpit have been ideally and intuitively designed for the benefit of the driver, so that even the high-resolution Control Display is within your field of vision. The optionally available harman/kardon loudspeaker system (standard with M Sport Plus package) provides brilliant sound every time, no matter where you sit. It's easier to get into the car as there is increased leg room and the cup holders are positioned ergonomically in front of the gear lever – these are just

a few of the details that make day-to-day driving more enjoyable. But what makes the BMW 1 Series Sports Hatch interior so unique are the countless optional features available to give your BMW that truly individual touch. The Urban, Sport and M Sport models produce an outstandingly sporty feel that can be customised with your preferred choice of upholstery and interior trim. The selection of innovative materials and high-quality craftsmanship will impress you every time you go for a drive. Show your confidence in the BMW 1 Series Sports Hatch.



TRUE INDIVIDUALITY IS A RARE QUALITY. BUT IT COMES STANDARD IN THE INTERIOR OF EVERY BMW 1 SERIES SPORTS HATCH.

YOUR PERSONALITY, YOUR DESIGN.

Five seat configuration only available in the UK, four seat configuration (pictured here) not available in the UK.

BMW ConnectedDrive So connected, you're free.



Our world is becoming more connected every day with instant access to information at anytime and anyplace. With your BMW being an integral part of your lifestyle we believe it's important that you can keep up to date from behind the wheel. BMW ConnectedDrive delivers intelligent solutions that allow you to remain connected whilst on the move.



Advanced driver assistance systems can connect you to the outside world so that you know exactly what is happening around you, premium traffic solutions ensure you are taking the most time efficient route whilst online services provide direct access to information about your current location or chosen destination. Today, driving enjoyment is derived as much from being informed and relaxed as it is from impressive performance and efficiency – discover how the comprehensive range of ConnectedDrive technologies can enhance the connected capabilities of your Ultimate Driving Machine. For more information please visit:

www.bmw.co.uk/ConnectedDrive
www.bmw.ie/ConnectedDrive

BMW CONNECTED DRIVE SERVICES AND APPS.

Wherever your journey may lead, you can stay in touch with BMW ConnectedDrive Services. The range of innovative functions provide optimum integration between the driver, vehicle and the world outside – anytime, anywhere.



BMW EMERGENCY CALL.

Known as BMW eCall, this service provides a direct link to the local Emergency Services. You can summon help manually by simply pressing the SOS emergency call button to request for assistance. Additionally, if your vehicle is involved in a more serious accident an automatic emergency call is made, providing extra reassurance that if you cannot call for help, your BMW will on your behalf. With either the manual or the automatic emergency call, details of your vehicle and location will be sent directly to an Emergency Service Centre, so that immediate action can be taken and assistance dispatched without delay. BMW Emergency Calls are made using the integrated BMW SIM card so no mobile phone is required.



REAL TIME TRAFFIC INFORMATION (optional).

Provides a precise account of current traffic situations in real time. The information is presented on the Navigation map by using a colour coding system indicating the flow of traffic. Road networks are divided into distances as short as 500m for superior accuracy and dependency. Information is automatically updated every 3 minutes allowing the driver to monitor whether the traffic situation is improving or worsening. The system also recommends for or against alternative routes based on the potential time saving benefits.



INFORMATION PLUS (optional).

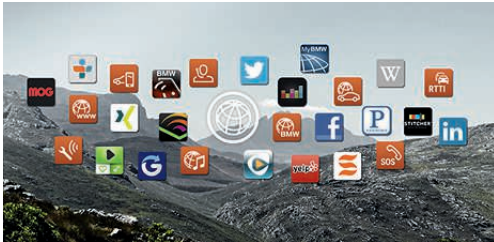
At the push of a button local information is available wherever you may be. The service connects you to a BMW operator who will be able to quickly access the information you need. So whether you are looking for a nearby hotel, restaurant or simply can't find your way then support is conveniently on hand. Information can be sent directly to your BMW so that addresses can be transferred to your Navigation system. Information Plus calls are made using the integrated BMW SIM card so there is no need for a mobile phone and you can use the service as much as you like at no additional cost.

BMW CONNECTED DRIVE SERVICES AND APPS.



REMOTE SERVICES (optional).

This service enables remote control of specific vehicle functions, which include Remote lock/unlock, Vehicle Finder (within a 1500m radius of the vehicle), Remote headlight flash, Google Local Search and address send-to-car. Services can be performed upon request to the BMW Customer Information Centre or via the My BMW Remote app, available for iPhone and Android users.



BMW APPS (optional).

As part of BMW Online Services, with BMW Apps users can download the free 'BMW Connected' iPhone application. This allows you to integrate a range of popular smartphone apps within your vehicle. Using the iDrive controller, you can select web radio stations from around the world, call up the latest status reports from your Facebook and Twitter accounts and view your iCalendar on the vehicle Control Display.



BMW ONLINE SERVICES (optional).

With the internet-based services from BMW Online you can conveniently keep up to date with the latest news and sports headlines from the comfort of your BMW. You can plan ahead with Google™ send-to-car and a detailed five-day weather forecast. Search for accurate location-based information in a live online database and stay in touch with your emails using the BMW Online Office. No mobile phone is required since access to information is via the integrated BMW SIM card, so you can use the services as much as you like at no additional cost.

BMW CONNECTED DRIVE DRIVER ASSISTANCE.

The comprehensive range of advanced driver assistance systems from BMW ConnectedDrive seamlessly integrate the driver into their immediate environment. Headlights, sensors, cameras and radars can combine to ensure the driver is fully informed about what is happening around them, delivering superior comfort and convenience as well as enhanced safety for both passengers and other road users.



DRIVING ASSISTANT (optional).

A tailored combination of camera-based driver assistance systems provide enhanced safety and reduce the risk of potential collisions, at both high and low speeds. Lane Departure Warning detects lane markings and alerts the driver with a vibration through the steering wheel should the vehicle unintentionally deviate from the lane of travel. Forward Collision Warning monitors vehicles ahead and warns the driver by an optical and acoustic alert if their approach could escalate into a rear-end collision, escalating to proactively engage braking for rapid reaction to potential vehicle collisions at higher speeds. The system also detects for pedestrians in urban driving situations and now includes Attentiveness Assistant.



ADAPTIVE HEADLIGHTS (optional).

BMW Adaptive Headlights combine with High-beam Assistant to provide optimum illumination of the road ahead without glaring on-coming traffic and other road users. A camera in the rear-view mirror detects vehicles and intelligently adapts the beam distribution depending on the traffic situation. Beam direction is controlled by vertical pivot-mounted Xenon Headlights and additional cornering lights located in the fog lights are activated in response to the direction indicators or corresponding steering wheel input.



REVERSING ASSIST CAMERA (optional).

Provides extra confidence in tight manoeuvres and when parking. A camera clearly shows the area directly behind the vehicle in the Control Display. Interactive guidelines help determine the trajectory of the manoeuvre and highlight whether the parking space selected is large enough.

BMW EfficientDynamics

Less emissions. More driving pleasure.

BMW has long been at the forefront of the automotive industry in pursuing efficient driving technologies as part of our multi-award winning sustainability strategy. BMW EfficientDynamics represents a comprehensive package of innovative technologies for reducing fuel consumption and emissions – whilst simultaneously increasing driving dynamics. Through these innovations the BMW Group has been able to reduce the CO₂ emissions of its entire fleet by approximately 30% since 1995. Currently, the majority of models produce less than 140g of CO₂ per kilometre and more than two million BMW vehicles have already been equipped with EfficientDynamics technologies. BMW intends to achieve a further 25% reduction in CO₂ per kilometre. For the benefit of the environment and the enjoyment of the driver.



99g CO₂/km TAKE EFFICIENCY TO THE NEXT LEVEL.

BMW 116d EfficientDynamics. This outstandingly efficient vehicle has an average fuel consumption of 74.3mpg (3.8l/100km), with CO₂ emissions of 99g per kilometre with manual transmission. Many special features make this model the efficiency champion of the series. A longer final drive ratio combined with an adjusted Optimum Shift Indicator reduces engine speeds – travelling at 62mph in 6th gear, the engine does just 1,600rpm. The car's aerodynamics, the tyres' rolling resistance and the entire powertrain benefit from fine-tuning as well. The suspension has been lowered by 10 millimetres, aerodynamically optimised wheel rims reduce air turbulence, and the engine output has been adapted. But in addition to its outstanding fuel economy, the BMW 116d EfficientDynamics model offers lots of sporting DNA – because a pure fuel-saver model without driving pleasure is unthinkable for BMW.

BMW 116d EfficientDynamics Business.

Also available for the BMW 1 Series Sports Hatch 5-door is the 116d EfficientDynamics Business model. This model has the same outstanding technical data as the 116d EfficientDynamics, but includes upgraded interior specification: Dakota leather upholstery, heated front seats and BMW Business Media package.

BMW EFFICIENT DYNAMICS – MAKING A LITTLE GO A LONG WAY.

Through tireless research, BMW is consistently producing innovations for the energy efficient mobility of the future. Like every BMW, the BMW 1 Series Sports Hatch incorporates many aspects of the multi-award-winning BMW EfficientDynamics technology as standard. These technologies interact perfectly to reduce fuel consumption and CO₂ emissions while maximising performance and dynamism. Less fuel, more driving pleasure – a paradox that BMW has resolved once and for all. For the benefit of the environment and the enjoyment of the driver.

THE BMW EFFICIENT DYNAMICS FEATURES IN THE BMW 1 SERIES SPORTS HATCH AT A GLANCE.

Auto Start-Stop (for six-speed manual transmission and eight-speed automatic transmission). Switches the engine off without affecting other functions whenever the car comes to a rest, at traffic lights for example, saving fuel and reducing emissions. The engine is restarted automatically within a fraction of a second.

BMW TwinPower Turbo technology. In the 114i, 116i, 118i, 125i and M135i petrol engines, this package of innovations combines a TwinScroll turbocharger with VALVETRONIC, Double-VANOS and High-precision direct injection. In the 114d, 116d, 116d EfficientDynamics, 118d, 120d and 125d diesel engines, Common-rail direct injection is combined with a turbocharger (two-stage turbocharger in the 125d) featuring Variable Vane Geometry. This significantly reduces the fuel consumption of the BMW TwinPower Turbo petrol and diesel engines – while noticeably increasing performance across all engine speeds.

Brake Energy Regeneration. The alternator disengages automatically when the battery is fully charged, only re-engaging when the battery needs charging. This reduces the demands on the engine, reducing fuel consumption and emissions. In addition, when the car is braking or coasting, the system automatically engages the alternator to charge the battery, recycling energy that would otherwise be wasted.

Electric power steering (EPS). In comparison with conventional hydraulic steering systems, the electric power steering support only uses energy as needed to assist steering. When a steering wheel is static, for example when driving on a straight road, the electric motor is inactive.

ECO PRO mode. This mode enables fuel consumption to be reduced by up to 20% depending on your individual driving style¹. For example, ECO PRO will advise the driver to accelerate less aggressively, the optional eight-speed Sport automatic transmission shifts even faster to higher gears and the automatic air conditioning is subject to energy-optimised setting.

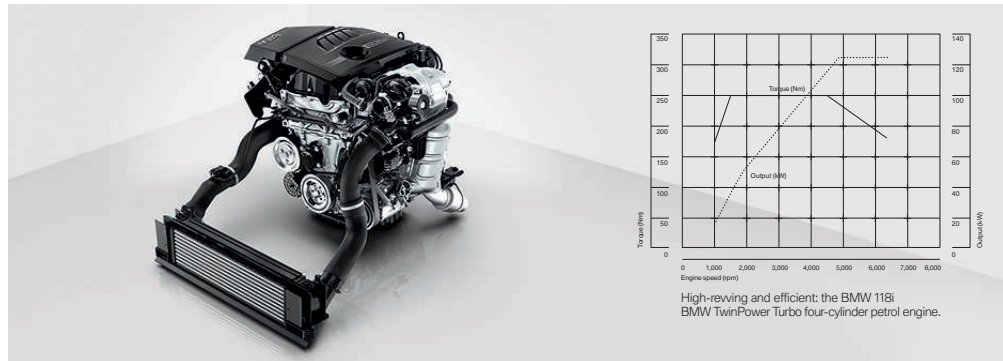
Optimum Shift Indicator. Timely gear shifts are one of the most effective ways to save fuel. A small visual display on the vehicle's instrument panel shows the optimum gear for a more fuel-efficient driving style.

Eight-speed automatic transmission. The close spacing of gear ratios in the optional eight-speed automatic transmission with Steptronic enables maximum use of the optimum rev range, lowering fuel consumption and enhancing shift comfort. Furthermore, the BMW 1 Series Sports Hatch is the only vehicle in its class which offers the eight-speed automatic transmission as an option.

¹ According to an internal BMW fuel consumption study.

PEAK PERFORMANCE UNDER PRESSURE. BMW TWIN POWER TURBO TECHNOLOGY.

The petrol engines. Performance, power delivery and high revving distinguish each and every BMW engine. And of course, every BMW TwinPower Turbo engine available with the BMW 1 Series Sports Hatch adheres to the BMW EfficientDynamics philosophy. These engines turn maximum performance into pure propulsion, while simultaneously reducing fuel consumption and CO₂ emissions to a minimum. Regardless of which engine you choose, you're guaranteed maximum driving pleasure combined with outstanding efficiency.



BMW 125i.

Thanks to the intelligent BMW EfficientDynamics technology package, this powerful BMW TwinPower Turbo four-cylinder petrol engine boasts significantly reduced fuel consumption and emissions while still delivering an impressive power output of 218hp (160kW). The transmission combines a TwinScroll turbocharger with VALVETRONIC, Double-VANOS and High-precision direct injection. A maximum torque of 310Nm is reached within a range of 1,350 and 4,800rpm. In addition, Auto Start-Stop and Optimum Shift Indicator combined with a six-speed manual transmission and Brake Energy Regeneration achieve an average fuel consumption rate of just 42.8mpg (6.6l/100km), or 44.8mpg (6.3l/100km) with automatic transmission. The BMW 125i accelerates from 0 to 62mph in 6.4 seconds, or 6.2 seconds with automatic transmission, reaching a top speed of 151mph (243km/h), or 152mph (245km/h) with automatic transmission.

BMW 118i.

This BMW TwinPower Turbo four-cylinder petrol engine features an intelligent technology package that significantly reduces fuel consumption and emissions, whilst delivering impressive performance figures. It combines a TwinScroll turbocharger with VALVETRONIC, Double-VANOS and High-precision direct injection. Furthermore, Auto Start-Stop, Optimum Shift Indicator and Brake Energy Regeneration ensure first-class fuel efficiency. The result is an average fuel consumption rate of only 49.6mpg (5.7l/100km), or 50.4mpg (5.6l/100km) with automatic transmission. This incredibly responsive engine powers the BMW from 0 to 62mph in just 7.4 seconds, or 7.2 seconds with automatic transmission, and never fails to impress with its output of 170hp (125kW) and top speed of 140mph (225km/h) or 138mph (222km/h) with automatic transmission.

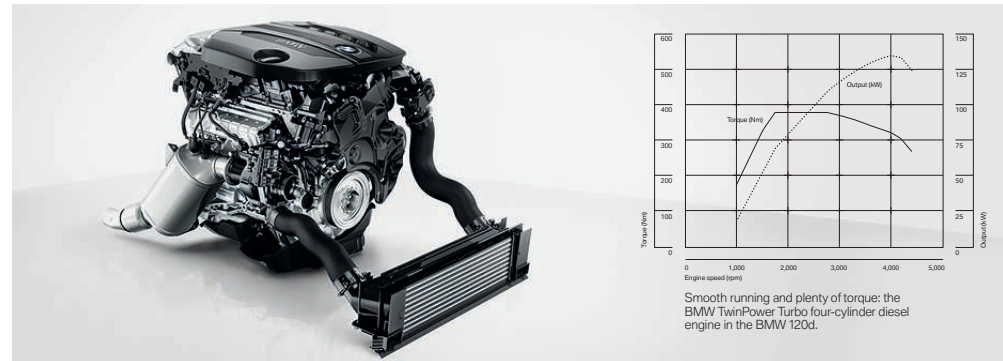
BMW 116i.

The BMW TwinPower Turbo four-cylinder petrol engine combines the technologies of VALVETRONIC, Double-VANOS, High-precision direct injection and a TwinScroll turbocharger to deliver an output of 136hp (100kW) from its 1.6 litre capacity. The powerful TwinScroll turbocharger enables this engine to hit the 62mph mark in 8.5 seconds, or 8.7 seconds with automatic transmission, and reach a top speed of 130mph (210km/h). BMW EfficientDynamics features, like Auto Start-Stop and Optimum Shift Indicator, help reduce fuel consumption even further. On average, the BMW 116i consumes only 52.3mpg (5.4l/100km), or 50.4mpg (5.6l/100km) with automatic transmission.

BMW 114i.

This engine delivers 102hp (75kW) and a maximum torque of 180Nm. The BMW TwinPower Turbo four-cylinder petrol engine combines a TwinScroll turbocharger with VALVETRONIC, Double-VANOS and High-precision direct injection, which make for one impressive engine. It's also incredibly fuel efficient, thanks to additional features from BMW EfficientDynamics – like Auto Start-Stop, Brake Energy Regeneration and Optimum Shift Indicator. Its average fuel consumption rate is 51.4mpg (5.5l/100km) with a CO₂ emissions output of just 127g/km with 16" wheels.

The diesel engines. In the six diesel engines available for the BMW 1 Series Sports Hatch, BMW TwinPower Turbo technology combines innovative turbocharger technology for more dynamism with the latest injection technology and fully variable power control for increased efficiency. All diesel models feature lightweight aluminium construction and are equipped with a zero-maintenance particle filter as standard. The BMW 120d is also optionally available with BMW BluePerformance – this technology significantly reduces nitrogen oxide emissions and already complies with the EU6 emissions standard that will take effect in 2014.



BMW 125d.

BMW 125d is the top diesel model with a BMW TwinPower Turbo four-cylinder diesel engine with a 2.0 litre capacity that's capable of delivering an immense 218hp (160kW). It features Common-rail direct injection and a two-stage turbocharger with Variable Vane Geometry. A maximum torque of 450Nm between 1,500 and 2,500rpm ensures exceptional power delivery, a top speed of 149mph (240km/h) and acceleration from 0 to 62mph in 6.5 seconds. BMW EfficientDynamics technologies like Auto Start-Stop, Brake Energy Regeneration and the Optimum Shift Indicator contribute to an efficient average fuel consumption of just 57.6mpg (4.9l/100km), or 60.1mpg (4.7l/100km) with automatic transmission.

BMW 120d/120d xDrive.

This BMW TwinPower Turbo four-cylinder diesel engine delivers a silky smooth yet dynamic performance and is now available with xDrive. It features an impressive torque of 380Nm between 1,750 and 2,750rpm and an output of 184hp (135kW). Its combination of Common-rail direct injection and a turbocharger featuring Variable Vane Geometry yields a top speed of 142mph (228km/h) and propels the BMW from 0 to 62mph in 7.2 seconds, or 7.3 seconds with automatic transmission. BMW EfficientDynamics technologies contribute to an efficient average fuel consumption rate of just 65.7mpg (4.3l/100km), 67.3mpg (4.2l/100km) with automatic transmission and 60.1mpg (4.7l/100km) on 120d xDrive which is available on 5-door models.

BMW 118d.

This BMW TwinPower Turbo four-cylinder diesel engine accelerates with an output of 143hp (105kW) and a maximum torque of 320Nm. It owes its success to the Common-rail direct injection and a turbocharger featuring Variable Vane Geometry, yielding a top speed of 132mph (212km/h) and acceleration from 0 to 62mph in just 8.9 seconds, while consuming on average just 68.9mpg (4.1l/100km) and 67.3mpg (4.2l/100km) with automatic transmission.

BMW 116d.

With a capacity of 2.0 litres, this BMW TwinPower Turbo four-cylinder diesel engine reaches a full 116hp (85kW) output. It rockets the BMW from 0 to 62mph in 10.3 seconds, or 10.7 seconds with automatic transmission, and reaches a top speed of 124mph (200km/h). Thanks to Common-rail direct injection, a turbocharger featuring Variable Vane Geometry and the BMW EfficientDynamics technology package including Auto Start-Stop, Brake Energy Regeneration and Optimum Shift Indicator. It reaches a maximum torque of 260Nm within a range of 1,750 and 2,500rpm and consumes on average only 68.9mpg (4.1l/100km).

BMW 116d EfficientDynamics/EfficientDynamics Business.

These models are synonymous with reduced fuel consumption and CO₂ emissions and increased driving pleasure, thanks to BMW TwinPower Turbo technology and additional features like Auto Start-Stop, Brake Energy Regeneration, an adjusted rear axle transmission ratio and the Optimum Shift Indicator. Fuel efficiency is boosted even further by its optimised aerodynamics. So it's not surprising that this pioneering automobile consumes on average just 74.3mpg (3.8l/100km) and produces only 99g/km of CO₂, while still delivering an output of 116hp (85kW) and a maximum torque of 260Nm.

BMW 114d.

This BMW TwinPower Turbo four-cylinder diesel engine with Common-rail direct injection and a turbocharger with Variable Vane Geometry produces an output of 95hp (70kW) and a maximum torque of 235Nm between 1,500 and 2,750rpm. It accelerates from 0 to 62mph in 12.2 seconds, reaching a top speed of 115mph (185km/h). BMW EfficientDynamics features, like the Auto Start-Stop, Brake Energy Regeneration and the Optimum Shift Indicator, result in an average fuel consumption rate of just 68.9mpg (4.1l/100km).

M GENES INCLUDED. THE BMW M135i.

The BMW M engineers pooled their years of experience in fine-tuning powertrains, chassis and steering to create the BMW M135i. The result is palpably sporty, precise handling and an unusually intense driving experience. The M Performance TwinPower Turbo six-cylinder in-line petrol engine produces a powerful output of 320hp (235kW), a maximum torque of 450Nm, exceptional traction – and supremely satisfying engine acoustics. In short, it's a vehicle that perfectly combines pure dynamism with excellent everyday practicality.



Stunning, no matter how you look at it. A range of unique and exclusive details make the BMW M135i visually striking. The exterior design boasts features such as the M-style air intakes in the front apron, side mirror caps in the metallic Ferric Grey paint finish, as well as the High-gloss Shadowline exterior trim. These sporty elements are perfectly complemented by 18" light alloy M Double-spoke style 436 M wheels,

which provide exceptional traction, feature mixed High-Grip tyres and are exclusive to the BMW M135i. The interior is distinguished by door sill finishers with 'M135i' designation, Sport seats featuring Dakota leather upholstery, Aluminium Hexagon interior trim with Estoril Blue Matt finisher, and Anthracite headlining.



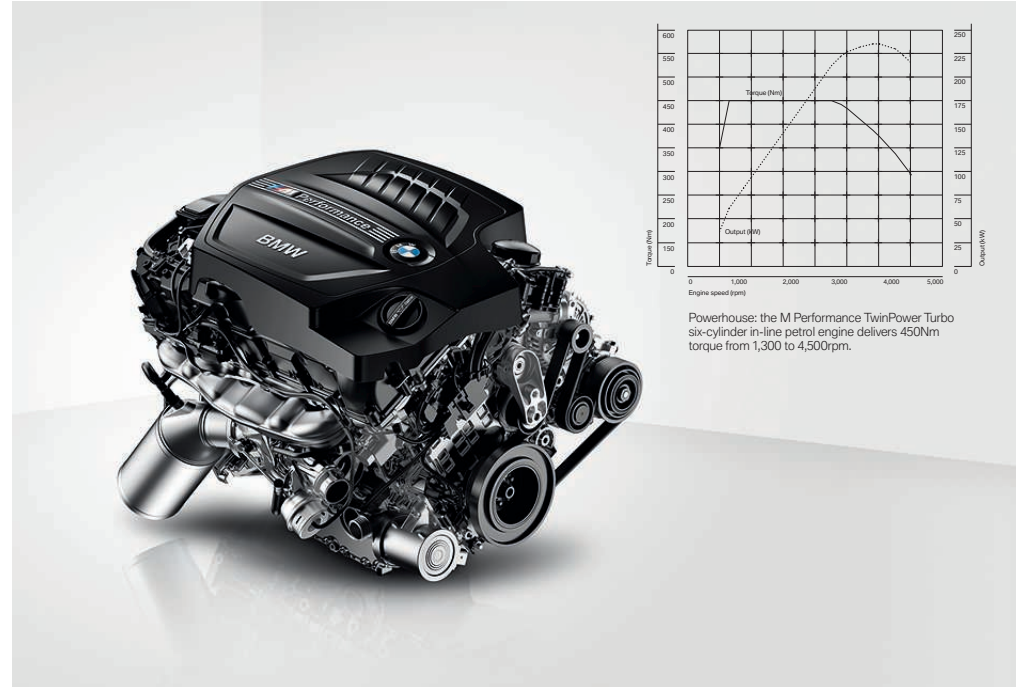
Designation. 'M135i' is the mark of the powerful top model of the BMW 1 Series.



Tailpipes. The round twin tailpipes feature a Chrome trim.

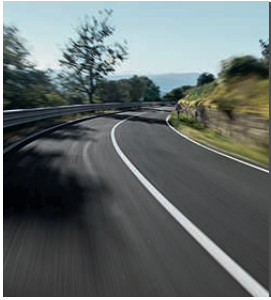


Door sill finishers. The aluminium front door sill finishers bear the 'M135i' designation.



BMW M135i. This M Performance TwinPower Turbo six-cylinder in-line petrol engine combines a TwinScroll turbocharger with VALVETRONIC, Double-VANOS and High-precision direct injection. It's a powerful engine distinguished by high torque (even at low engine speeds), sensational responsiveness and a broad rpm range. These characteristics make for some very dynamic stats, like a powerful 450Nm torque, maximum output of 320hp (235kW) and acceleration from 0 to 62mph in 5.1 seconds.

Fitted with the eight-speed automatic transmission, the BMW M135i accelerates from 0 to 62mph in 4.9 seconds, achieves an average fuel consumption rate of 37.7mpg (7.5l/100km) and CO₂ emissions of just 175g/km. Figures like these demonstrate its outstanding balance of dynamism and efficiency and once again emphasise BMW's innovative strength.



THE PURSUIT OF EXCELLENCE.

It is a characteristic embodied by every BMW without exception: pure dynamism. The chassis provides the technical foundation for this highly emotional driving experience. A result of the perfect harmonisation of innovative components and 50:50 weight distribution, it guarantees optimum contact with the road and ideal behaviour in every situation. Every BMW chassis transmits the passion for a sporty driving experience directly from the car to the driver while at the same time offering the greatest possible safety and comfort. That said, BMW engineers are still constantly re-inventing and refining the dynamism expected of a BMW.



THE IDEAL FOUNDATION FOR SUPERIOR DRIVING DYNAMICS. AN OUTSTANDING SUSPENSION.

The BMW 1 Series Sports Hatch offers a wide range of technologies to enhance the enjoyment of every drive. Many of these systems are intelligently networked, making it possible for you to enjoy sheer driving pleasure in the greatest possible safety. In the BMW 1 Series Sports Hatch, this is achieved by a weight distribution of almost 50:50 between the front and rear axles, as well as neutral steering behaviour, a high level of directional stability and fantastic traction. Read on and find out more.



Rear-wheel drive. The BMW 1 Series Sports Hatch is the only model in its class to feature rear-wheel drive. This type of drive provides the kind of extraordinary agility and manoeuvrability that BMW is renowned for. It also enables the vehicle weight to be ideally distributed across the entire running gear, which optimises traction and thereby the transmission of power to the road.

Lightweight suspension. The suspension is designed to perfectly complement the engine and transmission in the BMW 1 Series Sports Hatch. You can feel it in the precision of the steering, the agile handling, superb acoustic characteristics, lack of body roll and direct feedback from the road. The front suspension consists of a lightweight double-joint trailing-arm axle, which combines maximum strength with minimum weight. Together with the multi-arm rear axle and the rear-wheel drive, sporty handling is guaranteed.

Adaptive M Sport Suspension. This optional suspension is lowered by 10mm, providing exceptional driving comfort, increased agility and precise handling. Dampers continuously react to the road surface and driving style, and this option includes Drive Performance Control with ECO PRO, Comfort, Sport and Sport+ modes.

xDrive. Available on 5-door 120d models, this intelligent all-wheel-drive system adapts perfectly to difficult driving situations by delivering maximum traction. xDrive recognises oversteer or understeer, based on driving data such as steering angle and wheel rotation speed, the system responds instantly. xDrive combines the advantages of all-wheel-drive; traction, directional stability and driving safety with the hallmark agility of a BMW.

Steering. Unwanted torque steer on the front axle is completely foreign to the BMW 1 Series Sports Hatch, thanks to the strict separation of steering and drive train. The steering power is evenly distributed and the steering angle is small. As a result, the driver can feel road conditions and receives more direct feedback when cornering. On top of it all, the electric power steering supports the reduction of fuel consumption.

Variable Sport Steering. This optional mechanical system constantly adjusts the steering ratio to suit the driving situation. With the help of Servotronic, it reduces the steering movement required to turn the wheels to make light work of parking and manoeuvring. Furthermore, it increases agility, noticeable in particular when driving dynamically around tight bends and curves (standard with M135i).

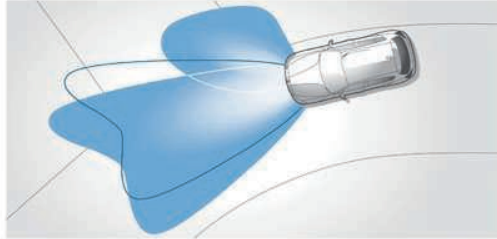
Drive Performance Control, including ECO PRO mode. Included as standard this system allows drive and suspension components (such as steering) to be individually adapted via the Comfort, Sport and Sport+ Modes¹. Activating the ECO PRO mode helps optimise fuel consumption and displays potential savings in the instrument panel.

Chassis. The BMW 1 Series Sports Hatch features a particularly rigid passenger cell. This not only leads to increased steering precision and agility, but also improves passenger safety. The body only yields in precisely defined areas at the front and rear. Should an accident occur, these deformation areas are capable of absorbing a large amount of the impact, thereby minimising the severity of the collision as it happens.

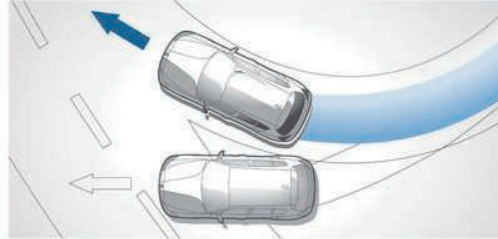
¹ Only in conjunction with Sport, M Sport, Sport automatic transmission, Variable Sport Steering or Adaptive M Sport suspension.

UNPARALLELED SAFETY WITH THE LATEST BMW TECHNOLOGIES.

The BMW 1 Series Sports Hatch surrounds you with cutting-edge technologies for every eventuality. Superb handling and innovative equipment come standard. Drivers benefit from the very latest technologies that provide optimal support at all times. You'll feel safe and protected, no matter where your journey takes you.



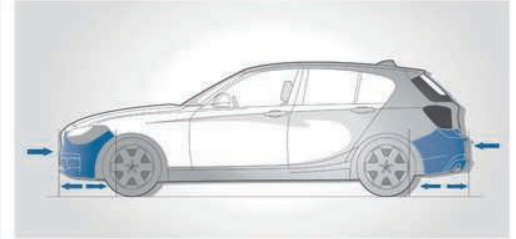
□ **524 Adaptive Headlights** with variable light distribution, including cornering lights and High-beam Assistant, illuminate bends at greater distances by optimally adjusting the swivelling headlights as soon as the driver turns the steering wheel. To improve short-range visibility, the cornering lights integrated into the foglights are automatically activated, even when the vehicle is at a standstill, as soon as the indicator is switched on or the steering wheel is turned.



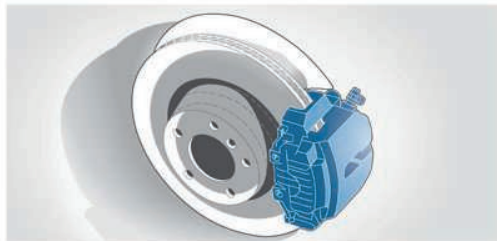
■ **Dynamic Stability Control+ (DSC+)**, including Cornering Brake Control (CBC), Hill-start Assistant, Brake Assist, Brake drying function and Braking readiness. DSC recognises the risk of skidding before it occurs and stabilises the car in milliseconds. The Dynamic Traction Control (DTC) allows increased wheel slip to optimise acceleration in certain driving conditions and to enable more dynamic driving.



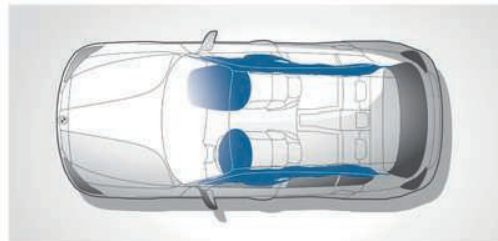
■ **BMW restraint system** for the driver and front passenger, comprises three-point seat belts combined with integral tensioners and force limiters. In the event of a collision, passengers are held safely in their seats. The seat belt buckles in the rear are marked to avoid them being incorrectly fastened.



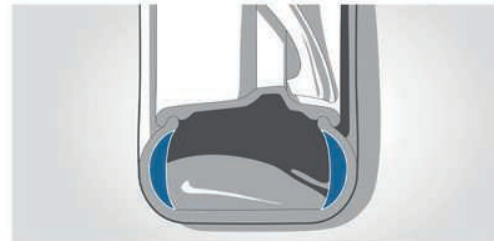
■ **The front and rear bumpers** feature easily-replaceable deformation elements that absorb impacts at speeds up to 10mph.



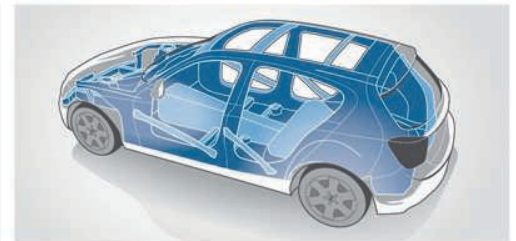
■ **Disc brakes**, all-round (front, inner-vented) are specially designed to ensure maximum driving safety and easy operation. The braking system is characterised by its long service life and the provision of consistently short braking distances.



■ **Airbags** are just one of the passive safety elements in your BMW that make up a perfectly coordinated system. Six airbags are installed for precise protection: driver and front passenger airbags, the head airbags (curtain) for front and rear as well as side airbags stowed in the seatbacks.



□ **258 Run-flat tyres**, reinforced side walls prevent the tyres from completely collapsing or loosening from the rim if the air pressure drops. ■ **Tyre Pressure Monitoring** notifies the driver of any tyre issues. A minor loss in pressure is signalled by a light in the cockpit, while any greater loss is additionally signalled with an acoustic warning.



■ **Passenger cell.** The system of members and nodes in the functional body structure combined with the strategic deployment of high-strength materials delivers maximum passive safety in front, side or rear crashes. Defined deformation zones mean that the body structure can absorb impact energy, increasing passenger protection.

THE BMW 1 SERIES SPORTS HATCH. ES / SE / ED.



The cockpit with its centre console angled towards the driver is a classic example of driver-orientated BMW design. The standard steering wheel (standard leather steering wheel with multi-function buttons pictured here) is a pleasure to hold. Also shown here is the optional harman/kardon loudspeaker system, which

provides consistently brilliant sound quality, and the optional BMW Professional Multimedia Navigation system. Countless storage options and high-quality materials are characteristic of the open, light interior design and add to the pleasant atmosphere.



ES and SE models have Move cloth upholstery in Anthracite and Satin Silver interior trim as standard, EfficientDynamics Business models come with Dakota leather upholstery, shown above in Black, which is also optionally available on ES, SE and ED. Also shown is Brushed Aluminium interior trim with High-gloss Black finisher available as an option on all models. The interior additionally features numerous practical storage solutions and cup holders in front of the gear lever with removable storage covers for added convenience.



The BMW 1 Series Sports Hatch ES, SE and ED models all come standard with 16" light alloy wheels. 18" light alloy Double-spoke style 385 wheels with mixed tyres, shown here, are optionally available on ES and SE models.



The BMW 116i with Glacier Silver metallic paint, 18" wheels, and Xenon Headlights (all optionally available).

THE BMW 1 SERIES SPORTS HATCH. URBAN.

Interior equipment:

- Ambiance and welcome lighting - switchable BMW Classic Orange/ Royal Blue LED
- Door sill finishers with 'BMW Urban' designation, front
- Interior trim, Black Acrylic glass with Oxide Silver trim finisher
- Metro cloth/leather upholstery
- Remote control with integrated key, with inset in White
- Sport multi-function leather steering wheel with speed limiting function

Exterior equipment:

- 17" light alloy V-spoke style 412, with 225/45 tyres
- Exhaust tailpipe, Matt Chrome
- Front air inlet with High-gloss White centre finisher
- Kidney grille, Chrome with slat sides in High-gloss White
- Rear bumper with High-gloss White finisher
- Run-flat tyres



■ Front door sill finishers with 'BMW Urban' designation.



■ Remote control with integrated key, with inset in White.



■ 17" light alloy V-spoke style 412, in Aspen White and burnished metal, with 7.5J x 17 225/45 R17 run-flat tyres.



■ Kidney grille, Chrome with slat sides in High-gloss White.

□ The Sport seats with Dakota leather (optional) in Oyster add an air of elegance to the interior. Shown here is also the optional BMW Professional Media package, as well as the optional eight-speed automatic transmission.



The BMW 116i Urban with optional Sparkling Bronze metallic paint.

THE BMW 1 SERIES SPORTS HATCH. SPORT.

Interior equipment:

- Ambience lighting – switchable BMW Classic Orange/Cold White LED
- Door sill finishers with 'BMW Sport' designation, front
- Drive Performance Control with ECO PRO, Comfort, Sport and Sport+ Modes
- Interior trim, High-gloss Black with Coral Red finisher
- Remote control with integrated key, with inset in Red
- Sport instrument cluster
- Sport multi-function leather steering wheel with Red stitching and speed limiting function
- Sport seats, driver and front passenger
- Track cloth upholstery

Exterior equipment:

- 17" light alloy Star-spoke style 379, with 225/45 tyres
- Exhaust tailpipe, Dark Chrome
- Front air inlet with High-gloss, Black finisher
- Kidney grille with extra-wide High-gloss Black vertical slats
- Rear bumper with High-gloss Black finisher
- Run-flat tyres

Sport Plus package (optional):

- 18" light alloy Double-spoke style 385
- Headlight wash
- Sun protection glass
- Windscreen with grey shade band
- Xenon Headlights



■ Front door sill finishers with 'BMW Sport' designation.

■ Remote control with integrated key, with inset in Red.



□ The Sport leather steering wheel with Red stitching and the speedometer and rev counter design featuring Red chronoscales are exclusive to Sport models – as is the High-gloss Black interior trim with Coral Red finisher. Interior trim in Fine Brushed Aluminium with Coral Red finisher (shown here), as well as BMW Business Media package and BMW Advanced loudspeaker system, are all optionally available on Sport models.

■ 2DT 17" light alloy Star-spoke style 379, in Orbit Grey and burnished metal with 7.5J x 17 225/45 R17 run-flat tyres.

□ 2LP 17" light alloy Y-spoke style 380, 7J x 17 with 205/50 R17 tyres.



The BMW 118i Sport model with optional Valencia Orange metallic paint.

THE BMW 1 SERIES SPORTS HATCH. M SPORT.

Interior equipment:

- Air conditioning, automatic with two-zone control
- Ambience lighting – switchable
- Door sill finishers with 'M' designation
- Gearshift lever with 'M' designation, short shift
- Headlining, Anthracite
- Hexagon cloth/Alcantara upholstery, Anthracite
- Interior trim, Aluminium Hexagon with Estoril Blue trim finisher
- M Sport multi-function leather steering wheel with speed limiting function
- Remote control with integrated key, with inset in Blue
- Sport seats, driver and front passenger

Exterior equipment:

- 18" light alloy M Star-spoke style 386 M with mixed tyres
- Exhaust tailpipes, Chrome
- Exterior trim, High-gloss Shadowline
- Kidney grille with extra-wide High-gloss Black vertical slats
- M aerodynamic bodystyling
- M logo designation, side - Chrome
- M Sport suspension (excluding xDrive)

M Sport Plus package (optional):

- Headlight wash
- Loudspeaker system – harman/kardon
- M Sport braking system
- Sun protection glass
- Windscreen with grey shade band
- Xenon Headlights



■ The Sport seats in Hexagon cloth/Alcantara upholstery with M piping and Contrast stitching give the interior a distinctly sporty look.



■ Front door sill finishers with 'M' designation.



□ 2NH M Sport braking system, oversized brake discs – front and rear, Blue painted brake calipers with 'M' designation. (Included within M Sport Plus package).

■ 2N4 18" light alloy M Star-spoke style 386 M, front 7.5J x 18 with 225/40 R18, and rear 8J x 18 with 245/35 R18 run-flat tyres.



The BMW 1 Series Sports Hatch M Sport in Estoril Blue metallic paint, with M aerodynamic bodystyling and High-gloss Shadowline exterior trim.

Exterior colours.



■ **668 Jet Black**
Non-metallic¹



□ **A83 Glacier Silver**
Metallic



□ **B40 Liquid Blue**
Metallic¹



■ **300 Alpine White**
Non-metallic



□ **A96 Mineral White**
Metallic¹



□ **B44 Valencia Orange**
Metallic



■ **A61 Crimson Red**
Non-metallic¹



□ **B06 Sparkling Bronze**
Metallic¹



□ **B45 Estoril Blue**
Metallic²



□ **475 Black Sapphire**
Metallic



□ **B38 Midnight Blue**
Metallic¹



□ **A76 Deep Sea Blue**
Metallic¹



□ **B39 Mineral Grey**
Metallic

These pages illustrate the colours and materials available for the BMW 1 Series Sports Hatch. Use them to identify your favourite colours, or compare various combinations. These colour samples are intended as an initial guide, however experience has shown that printed versions of paint, upholstery and interior trim colours cannot in all cases faithfully reproduce the colour appearance of the originals. Therefore we recommend that you consult your BMW Dealer on your preferred colour choices, who will be happy to show you original samples and assist you with any requests.

Interior colours.



Black

Upholstery colours.
ES / SE / EfficientDynamics.

■ **BDAT Anthracite**
Move cloth



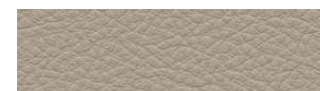
■ **4CG Satin Silver**



□ **LCSW Black**
Dakota leather³



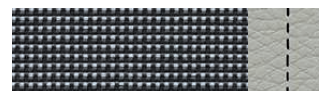
□ **4AD/4DL Fine Brushed Aluminium with Black, High-gloss trim finisher**



□ **LCCX Oyster**
Dakota leather³



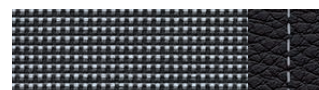
□ **4DP/4DK Finesline Stream wood with Oxide Silver, Matt trim finisher**

Upholstery colours.
Urban.

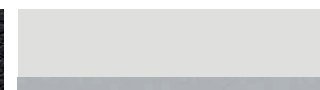
■ **CALJ Silver/Pearl Grey**
Metro cloth/leather upholstery



■ **4DS/4DK Black Acrylic glass with Oxide Silver, Matt trim finisher**



■ **CAH6 Silver/Black**
Metro cloth/leather upholstery



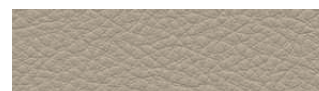
□ **4DR/4DK White Acrylic glass with Oxide Silver, Matt trim finisher**



□ **LCSW Black**
Dakota leather



□ **4AD/4DL Fine Brushed Aluminium with Black, High-gloss trim finisher**



□ **LCCX Oyster**
Dakota leather



Please note that even normal long or short-term use can lead to unrecoverable upholstery damage. This can be caused in particular by non-colourfast clothing.

¹ Not available with M Sport or M135i.

² Only available with M Sport or M135i.

³ Leather upholstery standard with BMW 1 Series 5-door 116d EfficientDynamics Business model.

Upholstery colours. Sport.



■ **BEL2 Anthracite with Red highlight**
Track cloth



■ **BEL1 Anthracite with Grey highlight**
Track cloth

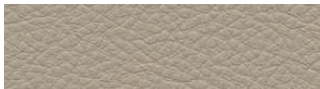
Interior trims. Sport.



■ **4AT/4DN Black, High-gloss with Coral Red,**
Matt trim finisher



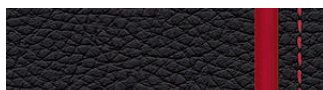
□ **LCSW Black**
Dakota leather



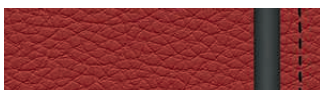
□ **LCCX Oyster**
Dakota leather



□ **4AD/4DL Fine Brushed Aluminium with Black,**
High-gloss trim finisher



□ **LCL3 Black with Red highlight**
Dakota leather

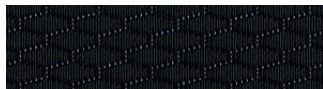


□ **LCL5 Coral Red with Black highlight**
Dakota leather



□ **4AD/4DN Fine Brushed Aluminium with Coral Red,**
Matt trim finisher

Upholstery colours. M Sport.



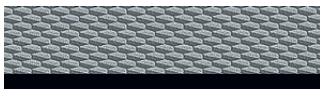
■ **HAAT Hexagon cloth/Alcantara**
Anthracite



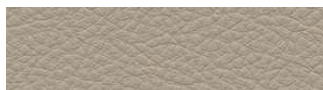
■ **4MR/4DX Aluminium Hexagon with Estoril Blue,**
Matt trim finisher²



□ **LCSW Black**
Dakota leather



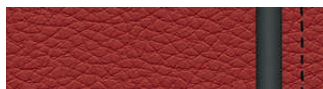
■ **4MR/4DL Aluminium Hexagon with Black,**
High-gloss trim finisher²



□ **LCCX Oyster**
Dakota leather



□ **4AD/4DL Fine Brushed Aluminium with Black,**
High-gloss trim finisher



□ **LCL5 Coral Red with Black highlight**
Dakota leather



□ **4DP/4DK Finesline Stream wood with Oxide Silver,**
Matt trim finisher

Combinations.

| | BMW upholstery colours | | | | | | | | | | | | | | | |
|--|--|----------------|----------------------|-------------------|--------------|----------------|-------------------------|-------------------------------|--------------------------------|----------------|---------------|--------------------------|--------------------------------|--------------------------------|-------|--|
| | ES/SE/ED | | Urban | | | | Sport | | | | M Sport/M135i | | | | | |
| | Move cloth | Dakota leather | Metro cloth/ leather | Dakota leather | Track cloth | Dakota leather | Hexagon cloth/Alcantara | Dakota leather | Move cloth | Dakota leather | Track cloth | Dakota leather | Hexagon cloth/Alcantara | Dakota leather | | |
| Standard seats | • | • | • | • | • | • | • | • | • | • | • | • | • | • | • | |
| Sport seats | • | • | • | • | • | • | • | • | • | • | • | • | • | • | • | |
| Upholstery colours | Anthracite | Black | Oyster | Silver/Pearl Grey | Silver/Black | Black | Oyster | Anthracite with Red highlight | Anthracite with Grey highlight | Black | Oyster | Black with Red highlight | Coral Red with Black highlight | Anthracite with Blue highlight | Black | |
| Interior colours | Black | Black | Black | Black | Black | Black | Black | Black | Black | Black | Black | Black | Black | Black | Black | |
| BMW exterior colours | 688 Jet Black, non-metallic ¹ | • | • | • | • | • | • | • | • | • | • | • | • | • | • | |
| 300 Alpine White, non-metallic | • | • | • | • | • | • | • | • | • | • | • | • | • | • | • | |
| A61 Crimson Red, non-metallic ¹ | • | • | • | • | • | • | • | • | • | • | • | • | • | • | • | |
| 475 Black Sapphire, metallic | • | • | • | • | • | • | • | • | • | • | • | • | • | • | • | |
| A76 Deep Sea Blue, metallic ¹ | • | • | • | • | • | • | • | • | • | • | • | • | • | • | • | |
| A83 Glacier Silver, metallic | • | • | • | • | • | • | • | • | • | • | • | • | • | • | • | |
| A96 Mineral White, metallic ¹ | • | • | • | • | • | • | • | • | • | • | • | • | • | • | • | |
| B06 Sparkling Bronze, metallic ¹ | • | • | • | • | • | • | • | • | • | • | • | • | • | • | • | |
| B38 Midnight Blue, metallic ¹ | • | • | • | • | • | • | • | • | • | • | • | • | • | • | • | |
| B39 Mineral Grey, metallic | • | • | • | • | • | • | • | • | • | • | • | • | • | • | • | |
| B40 Liquid Blue, metallic ¹ | • | • | • | • | • | • | • | • | • | • | • | • | • | • | • | |
| B44 Valencia Orange, metallic | • | • | • | • | • | • | • | • | • | • | • | • | • | • | • | |
| B45 Estoril Blue, metallic ² | • | • | • | • | • | • | • | • | • | • | • | • | • | • | • | |
| ES/SE/ED interior trims | 4CG Satin Silver | • | • | • | • | • | • | • | • | • | • | • | • | • | • | |
| 4AD/4DL Fine Brushed Aluminium with Black, High-gloss finisher | • | • | • | • | • | • | • | • | • | • | • | • | • | • | • | |
| 4DP/4DK Finesline Stream wood with Oxide Silver, Matt finisher | • | • | • | • | • | • | • | • | • | • | • | • | • | • | • | |
| Urban interior trims | 4DS/4DK Black Acrylic glass with Oxide Silver, Matt finisher | • | • | • | • | • | • | • | • | • | • | • | • | • | • | |
| 4DR/4DK White Acrylic glass with Oxide Silver, Matt finisher | • | • | • | • | • | • | • | • | • | • | • | • | • | • | • | |
| 4AD/4DL Fine Brushed Aluminium with Black, High-gloss finisher | • | • | • | • | • | • | • | • | • | • | • | • | • | • | • | |
| Sport interior trims | 4AT/4DN Black High-gloss, with Coral Red, Matt finisher | • | • | • | • | • | • | • | • | • | • | • | • | • | • | |
| 4AD/4DL Fine Brushed Aluminium with Black, High-gloss finisher | • | • | • | • | • | • | • | • | • | • | • | • | • | • | • | |
| 4AD/4DN Fine Brushed Aluminium with Coral Red, Matt finisher | • | • | • | • | • | • | • | • | • | • | • | • | • | • | • | |
| M Sport interior trims | 4MR/4DX Aluminium Hexagon with Estoril Blue, Matt finisher | • | • | • | • | • | • | • | • | • | • | • | • | • | • | |
| 4MR/4DL Aluminium Hexagon with Black, High-gloss finisher | • | • | • | • | • | • | • | • | • | • | • | • | • | • | • | |
| 4AD/4DL Fine Brushed Aluminium with Black, High-gloss finisher | • | • | • | • | • | • | • | • | • | • | • | • | • | • | • | |
| 4DP/4DK Finesline Stream wood with Oxide Silver, Matt finisher | • | • | • | • | • | • | • | • | • | • | • | • | • | • | • | |

• Recommended colour combination — Not available

¹ Not available with M Sport or M135i.
² Only available with M Sport or M135i.

Equipment packages.

ZOA Driver Comfort package

- 216 Servotronic
- 507 Park Distance Control (PDC), rear
- 544 Cruise control with braking function



ZOD Sun Protection package

- 3AP Windscreen with grey shade band
- 420 Sun protection glass

(Also included within Sport Plus package and M Sport Plus package)



ZOX Xenon Headlight package

- 502 Headlight wash
- 522 Xenon Headlights

(Also included within Sport Plus package and M Sport Plus package)



ZNB Media package – BMW Business

- 606 Navigation system – BMW Business
- Also includes TMC for lifetime

(Standard with EfficientDynamics Business models)



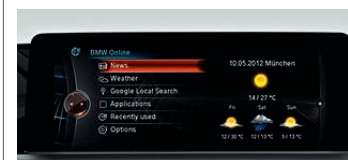
ZNC Media package – BMW Business Plus

- 606 Navigation system – BMW Business
- 6AK BMW Online Services, including BMW Apps
- 6AN Information Plus
- 6AP Remote Services
- Also includes TMC for lifetime



ZNP Media package – BMW Professional

- 609 Navigation system - BMW Professional Multimedia
- 6AK BMW Online Services, including BMW Apps
- 6AM Real Time Traffic Information (RTTI)
- 6AN Information Plus
- 6AP Remote Services
- 6WA Full Black panel display
- Also includes TMC for lifetime



Standard / Optional equipment.



□ **522 Xenon Headlights**¹ for high and low beam, including automatic headlight range controls, headlight washing system, accent lights with LED technology and three-dimensional LED rear lights – for the best possible illumination of the road at night and in poor visibility. The four LED light rings are flattened at the top and bottom and come with daytime driving lights. (Standard within Sport Plus package, M Sport Plus package and on M135i).

□ **524 Adaptive Headlights**¹ with variable light distribution, including cornering lights and High-beam Assistant, illuminate bends as soon as the driver turns the steering wheel. The variable light distribution illuminates winding roads well into the distance.



■ **Halogen headlights for high and low beam** with integrated accent lights.
□ **5AC High-beam Assistant** helps the driver at night by automatically switching between high and low beam depending on the presence of vehicles in front or oncoming traffic. The lights are also automatically dimmed when street lighting is sufficient.

■ **Foglights** integrated in the front apron – for improved safety in poor visibility (not available on M135i, optional on ES models).



■ **Dynamic brake lights** with indicator function help following traffic to instantly differentiate between light deceleration and more urgent situations – for increased safety on the road.



■ **Rain sensor, including automatic headlight activation:** once activated, the rain sensor will automatically switch on the windscreen wipers when it begins to rain, adjusting the wiper frequency in line with rainfall intensity. The integrated automatic headlight activation automatically switches on the low beam headlights at dusk or when entering tunnels (optional on ES models).



■ **Exterior mirrors,** electrically adjustable, with integrated indicator lights and aspheric on driver's side, exterior mirror cap painted in body colour (mirror caps in Ferric Grey on M135i).



□ **235 Towbar** with removable ball head, including trailer stability control. Maximum load of 1,200kg (not available with M135i, 114d or 116d EfficientDynamics models).



■ **Kidney grille,** Chrome with Black vertical slats. On Sport, M Sport and M135i models, the slats are extra-wide Black, High-gloss.



□ **563 Extended lighting**¹ includes vicinity lighting in the door handles, which illuminate the area outside the doors for 20 seconds once the doors are unlocked to ensure safe access in the dark. Additional features: door handle recess with LED illumination at the front, reading lights featuring LED technology at the front and rear with ambient lighting, footwell illumination at the front, vanity mirror lights for driver and front passenger, LED lights in the luggage compartment (standard on M135i).



□ **760 High-gloss Shadowline,** High-gloss Black, includes front and rear side window trim, the mirror base and mirror frame. (Standard on M Sport and M135i models).



□ **346 Exterior trim, Chromeline,** exclusive to the BMW 1 Series Sports Hatch 3-door models, includes the following elements in Chrome: the side window frame trim and the window recess finishers (not available on M135i).

¹ Only in conjunction with Equipment package.

Standard / Optional equipment.



2A7 18" light alloy Double-spoke style 385 with mixed tyres; front 7.5J x 18 with 225/40 R18, and rear 8.5J x 18 with 245/35 R18 run-flat tyres. (Standard with Sport Plus package).



2DU 17" light alloy Star-spoke style 382, in Space Grey and burnished metal, with mixed tyres; front 7.5J x 17 with 225/45 R17, and rear 8J x 17 with 245/40 R17 run-flat tyres.



2AS 17" light alloy Turbine-spoke style 381, with 7.5J x 17 with 225/45 R17 run-flat tyres.



2LP 17" light alloy Y-spoke style 380, 7J x 17 with 205/50 R17 run-flat tyres.

ES.



■ **2DS 16" light alloy Star-spoke style 377**, 7J x 16 with 205/55 R16 run-flat tyres.

SE / ED.



■ **2FD 16" light alloy V-spoke style 378**, 7J x 16 with 205/55 R16 run-flat tyres.

Urban.



■ **2FE 17" light alloy V-spoke style 412**, in Aspen White and burnished metal, with 7.5J x 17 with 225/45 R17 run-flat tyres.

Sport.



■ **2DT 17" light alloy Star-spoke style 379**, in Orbit Grey and burnished metal, 7.5J x 17 with 225/45 R17 run-flat tyres.

M Sport.



■ **2N4 18" light alloy M Star-spoke style 386 M** with mixed tyres; front 7.5J x 18 with 225/40 R18 tyres, rear 8.5J x 18 with 245/35 R18 run-flat tyres.

M135i.



■ **2PG 18" light alloy M Double-spoke style 436 M** with mixed tyres; front 7.5J x 18 with 225/40 R18 tyres, rear 8J x 18 with 245/35 R18 tyres.

2NH M Sport braking system, oversized brake discs – front and rear, Blue painted brake calipers with 'M' designation. (Standard with M Sport Plus package).

Standard / Optional equipment.



□ **403 Glass sunroof**, electric, with sun protection glass, convenient opening via remote key and one-touch function.

□ **775 Headlining, Anthracite** includes A, B, C and D-pillars, sun blinds and roof handles in refined Black (standard with M Sport models).



□ **420 Sun protection glass¹** prevents the interior from heating up excessively when exposed to direct sunlight, thereby ensuring a pleasant interior temperature. The more heavily tinted rear windows behind the B-pillars absorb the sunlight to a greater degree. (Standard with Sport Plus package and M Sport Plus package).



□ **507/508 Park Distance Control (PDC)** front and rear or just rear, makes parking and manoeuvring in tight spaces much easier. The proximity of obstacles is indicated acoustically and visually in the Control Display.



□ **5DP Park Assist¹** makes parallel parking easier. When travelling at speeds below 20mph, the system measures any parking spaces the vehicle passes. When a suitable space has been found, Park Assist takes over the steering, while the driver operates the accelerator and brake pedals – supported by acoustic signals and instructions in the Control Display.



□ **3AG Reversing Assist camera¹**. Shows the area behind the vehicle in the Control Display. The rear-view camera provides a better view when reversing in parking situations at speeds below 10mph. In models with a tow bar, the Reversing Assist camera has an extra zoom function.



■ **Sport leather steering wheel** with optional multi-function buttons for the remote control of radio/telephone; diameter 369mm, three spoke, including gear lever and handbrake lever in leather, and optionally with Red Contrast stitching for Sport models. (Standard with Sport and Urban models).

□ **2VL Variable Sport steering** includes Servotronic and reduces the necessary steering movement in large steering wheel turns. This provides a significant increase in convenience when parking and manoeuvring, while also enhancing agility for especially sporty driving in narrow bends. It also includes the Sport+ mode (standard with M135i).



■ **Six-speed manual transmission** for a particularly sporty drive. Immensely smooth with perfect ratios and precise short-throw gear shifts. The tight spacing of gear ratios means you can make even more individual use of the engine's dynamic performance.



□ **205 Eight-speed automatic transmission** with electric gear lever and Steptronic sequential manual mode for more relaxed and efficient driving.
□ **2TB Eight-speed Sport automatic transmission**, including the Sport+ mode, and now including Launch Control function, delivers fast and completely flawless gear shifts for maximum driving dynamics thanks to its sporty characteristics. It can also be operated via the gearshift paddles on the Sport leather steering wheel. (Only with 125i, M135i, 120d and 125d models).



■ **Leather steering wheel** (shown here with 375mm diameter and multi-function controls), three spoke, including gear lever and handbrake lever in leather.

□ **249 Multi-function controls for steering wheel** (standard on SE models and above).



■ **M Sport multi-function leather steering wheel**, finished in Nappa leather, is now available for the BMW 1 Series 3-door and 5-door. (Standard on M Sport and M135i models).

□ **248 Steering wheel heating**. Activated via a switch on the steering wheel, particularly pleasant in winter.



□ **6WA Full Black panel display** includes a high-resolution Info Display for showing Check Control functions and other information. When the ECO PRO mode is activated, the EfficientDynamics display appears in the rev counter.

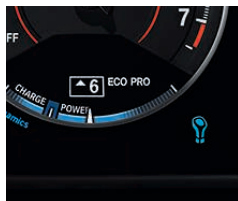
■ **Instrument panel** with two analogue dials showing speed, rpm and fuel level as well as the Info Display, where data relating to the outside temperature and On-Board Computer functions is shown.



□ **441 Smoker's package** includes a cigarette lighter and ash tray in the centre console at the front.

¹ Only in conjunction with Equipment package or other optional equipment.

Standard / Optional equipment.



■ **Optimum Shift Indicator**, pictured above on optional Full Black panel display (see page 59), shows when switching to another gear would be more fuel efficient. Based on your driving style, the system recommends when to switch into a higher or lower gear.



■ **Drive Performance Control, including ECO PRO mode**, enables you to switch between Comfort, Sport and Sport+ driving modes at the press of a button (Sport+ mode only in conjunction with Sport model, Sport automatic transmission, Adaptive M Sport suspension or Variable Sport Steering). Drive Performance Control also includes ECO PRO mode - designed to encourage a particularly efficient driving style.

□ **2VF Adaptive M Sport suspension¹**, with a chassis lowered by 10mm, and damper control via the Drive Performance Control button, as well as a sportier suspension setting that still maintains driving comfort.



□ **322 Comfort Access** for locking/unlocking the driver and front passenger doors and the tailgate without having to press a button on the remote control. The door handles are equipped with vicinity lighting.



■ **On-Board Computer (OBC)** provides information about average speed, average and current fuel consumption, range and outside temperature. The bonus mileage is also shown when the ECO PRO mode is activated. The On-Board Computer also features an acoustic ice warning.



□ **544 Cruise control with braking function²**, with adjustment of acceleration/deceleration, stores and maintains any selected speed above approximately 19mph, even when going downhill. Includes multi-function buttons for the steering wheel. Now with speed limiting function.



■ **ECO PRO mode** significantly reduces fuel consumption by encouraging a more efficient driving style. An EfficientDynamics display in the rev counter (in conjunction with 6WA Full Black panel display) indicates the ideal engine speed for efficient driving. The eight-speed automatic transmission shifts even faster to higher gears and the automatic air conditioning is subject to energy-optimised settings. The amount of fuel saved is shown in the Info Display as bonus mileage.



□ **431 Rear-view mirror, automatically dimming**. The glare from following cars is reduced when the amount of incandescent light exceeds a defined limit (standard on M135i).

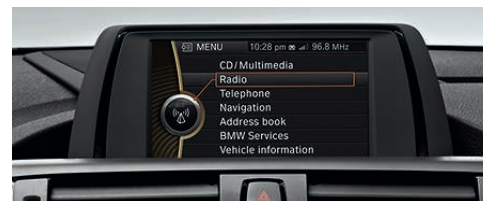


□ **609 Navigation system – BMW Professional Multimedia²** (shown here), including Bluetooth telephone preparation with USB audio interface, instrument panel with extended functionality, BMW Professional radio with DVD drive, new BMW iDrive Touch Controller, functional bookmarks, integrated hard disk with 20 GB of memory for maps and audio data, Real Time Traffic Information (RTTI) in conjunction with BMW ConnectedDrive Services, built-in 8.8" colour display showing 3D maps and bird's eye view.

□ **606 Navigation system – BMW Business Advanced²**, including Bluetooth telephone preparation with USB audio interface, BMW Professional radio, CD drive, iDrive Controller, 6.5" display. (Standard on EfficientDynamics Business).



□ **BMW Apps²**. With this optional feature, users can download the BMW Connected iPhone application free of charge. With this app you're no longer limited to listening to local radio. Using the iDrive system, you can select web radio stations from around the world. You can call up the latest status reports from your Facebook and Twitter accounts and view your iCalendar on the vehicle Control Display. (Included within BMW Online Services).



■ **BMW Professional radio with single CD player** (with MP3 playback capability). Including 6 station buttons, automatic volume adjustment, CD drive, MP3 decoder, two-line display, six loudspeakers, plus a 6.5" colour display (shown). Operated via the iDrive Controller.

■ **DAB tuner** for reception of a range of digital radio stations with excellent sound quality. Track names and artists can be shown in the Control Display.

■ **Integrated instruction manual** offers quick and direct access to all vehicle-specific information. Operated via the iDrive Controller, shown on Control Display.



□ **6AN Information Plus²** connects you to a BMW operator who will be able to quickly access the information you need, such as requesting places of interest from hotels and restaurants, to museums or historical attractions. The information is then sent to your car and can then be used in your Navigation system to plan a route to your destination, or to make a call on your Bluetooth telephone.

■ **BMW TeleServices** offers a range of telematic services that provide support and notification of the technical condition of the vehicle.



□ **6AK BMW Online Services²** provides access to online services, such as email, the Google Maps database, customised portals for news, weather.

■ **BMW Emergency Call** provides a direct link to the 999 Emergency Services. You can summon help manually by pressing the SOS emergency call button, or if your vehicle is involved in a more serious accident an automatic emergency call is made.



□ **6AR Internet²** for unrestricted online access when the vehicle is stationary. Any website can be called up on the Control Display by entering the URL using the iDrive Controller. Active for one year, renewable thereafter.

¹ Not in conjunction with M Sport suspension.

² Only available in conjunction with Equipment package or other optional equipment.

Standard / Optional equipment.



□ **5AS Driving Assistant**, a tailored combination of camera-based driver assistance systems provide enhanced safety and reduce the risk of potential collisions, at both high and low speeds. Lane Departure Warning detects lane markings and alerts the driver with a vibration through the steering wheel should the vehicle unintentionally deviate from the lane of travel. Forward Collision Warning monitors vehicles ahead and warns the driver by an optical and acoustic alert if their approach could escalate into a rear-end collision, escalating to proactively engage braking for rapid reaction to potential vehicle collisions at higher speeds. The system also detects for pedestrians in urban driving situations. Now includes Attentiveness Assistant.



■ **Air conditioning**, including microfilter for a comfortable temperature.
 □ **534 Air conditioning, automatic with two-zone control**¹, shown above, with separate temperature and air flow controls for driver and front passenger including Automatic Air Recirculation (AAC), microfilter, fogging and solar sensors, ALL button and rear air vents. (Standard on M Sport and M135i models).



□ **6NH Bluetooth hands-free facility with USB audio interface**¹ enables a wireless connection between Bluetooth-capable mobile phones and the vehicle. The integrated USB interface can be used to connect audio sources such as MP3 players, iPods or USB sticks. The system can be operated via the iDrive Controller or the multi-function buttons on the steering wheel, depending on the equipment present. (Standard on SE models and above).



□ **8TH Speed Limit Display**¹, including no-overtaking indicator, informs the driver of speed limits and overtaking restrictions.



□ **6NS Enhanced Bluetooth telephone preparation with USB audio interface and Voice Control**, wireless connection for compatible Bluetooth mobile phones with the vehicle, including hands-free facility. With additional snap-in adaptor, which must be purchased separately, includes charging function and connection to external aerial.²



□ **674 Loudspeaker system – harman/kardon**, shown above, including 12 loudspeakers, powerful digital amplifier featuring an overall output of 360W and centre speaker for superb sound. Surround sound function enables the simulation of various acoustic environments. (Standard on M Sport Plus package).

□ **676 Loudspeaker system – BMW Advanced** with 205W speaker output, vehicle-specific equalizing and seven loudspeakers delivers brilliant sound.



■ **Cup holders**, two, positioned in the centre console in front of the gear lever.



■ **Electric windows front and rear**, with push/pull switch and open/close fingertip control, comfort closing function and trap release.



■ **Standard seats** with manual seat adjustment, including seat height adjustment for driver and front passenger.

□ **459 Seat adjustment, front electric with driver memory**, for seat height and backrest adjustment, as well as lengthwise and seat angle adjustment, including memory function for driver's seat and exterior mirror and automatic dipping parking function. The personalised seat and exterior mirror settings can be stored for two different drivers.

□ **494 Seat heating** for driver and front passenger. Seat surfaces, backrests, and lateral supports can be heated. (Standard on 116d EfficientDynamics Business 5-door).



■ **Armrest front, sliding**, with sliding adjustment and integrated storage compartment. (Optional on ES models).



■ **ISOFIX child seat attachment**, rear on the two outer rear seats for safe attachment of a child seat with clip-in plug connectors and additional fastening points in the upper section.

□ **Front passenger airbag deactivation** via key switch on front passenger side.



□ **481 Sport seats** for driver and front passenger with electric backrest width adjustment for optimum lateral support. Plus manual adjustment of lengthwise seat position, seat height, backrest angle, seat angle and thigh support. (Standard on Sport, M Sport and M135i models).

□ **488 Lumbar support** for driver and front passenger seats, height and depth can be electrically adjusted to provide a perfect ergonomic seating position and support the back muscles.

¹ Only in conjunction with Equipment package or other optional equipment.

² Please see www.bmw.com/bluetooth for a list of compatible mobile phones.

Standard / Optional equipment.



■ **465 Through-loading system** with foldable rear seat backrest (40:20:40 split), centre armrest with two cup holders and two additional fastening points in the luggage compartment.



□ **413 Luggage compartment separating net** prevents objects falling into the passenger area should the vehicle brake hard. This feature comes with two protective nets and includes hooks and lashing straps. Also incorporates two dividing nets – for when the backrest is either up or down.



□ **493 Extended Storage** includes folding compartment in the instrument panel on the driver's side¹, two 12V sockets, rear door pockets, storage nets on the front seat backrests, a storage net and fastening strap on the right of the luggage compartment, a net for flexible usage and two cup holder trays for storing small items.



■ **Head restraints, foldable.** If desired, all three rear headrests can be folded down for improved rear visibility.



■ **Alarm system** offers effective protection with remote control and anti-theft system. If someone attempts to break into or move the vehicle, an acoustic signal is triggered and the hazard warning lights are activated.



■ **Personal Profile.** Depending on your chosen equipment, personal settings such as the temperature and air distribution of the automatic air conditioning, the position of the driver's seat and exterior mirrors, and the radio settings are stored in the vehicle and then activated when your key is used to unlock the central locking.



□ **BMW Service Inclusive.** Service costs are another area where your local BMW Dealer can offer you an intelligent solution. BMW Service Inclusive covers all your vehicle's servicing requirements for a specified period. Terms and conditions apply, find out more online at www.bmw.co.uk/serviceinclusive

¹ Not available in conjunction with Driving Assistant.

Genuine BMW Accessories.



19" light alloy wheels Double-spoke 361, bi-colour in Ferric Grey; BMW base support system and roof box 320.



■ **Rear storage bag,** available in two versions for both the Sport and Urban models (shown above).



■ **Ski and snowboard bag,** available in two versions for both the Urban and Sport models (shown above).



■ **Bicycle holder for the tow bar,** for transporting up to two bicycles. Also suitable for e-bikes.

A BMW always delivers a special drive. And Genuine BMW Accessories make the experience better still, by combining extraordinary ideas with sheer practicality and immaculate design. Discover the all-round innovative solutions on offer in many categories: exterior, interior, communication and information, and transport and luggage compartment. Your local BMW Dealer will be happy to advise you and provide you with a special catalogue detailing the entire range of Genuine BMW Accessories. For more information visit

➤ www.bmw.co.uk/accessories

| | | 114i | 116i | 118i | 125i | M135i | 114d | 116d | 116d EfficientDynamics | 118d | 120d | 125d |
|--|--|------|------|------|------|-------|------|------|------------------------|------|------|------|
|--|--|------|------|------|------|-------|------|------|------------------------|------|------|------|

Weight

| | | | | | | | | | | | | |
|---|----|------------|-------------|-------------|-------------|------------------|------------|-------------|------------|-------------|-------------|-------------------|
| Unladen weight EU ¹ BMW 1 Series 3-door | kg | 1370 | 1370 [1390] | 1375 [1390] | 1425 [1445] | 1500 [1515] | 1390 | 1390 [1420] | 1390 | 1395 [1420] | 1425 [1445] | 1470 [1485] |
| Unladen weight EU ¹ BMW 1 Series 5-door | kg | 1375 | 1375 [1395] | 1380 [1395] | 1430 [1450] | 1505 [1520] | 1395 | 1395 [1425] | 1395 | 1395 [1425] | 1430 [1450] | 1465 [1480] |
| Max. permissible BMW 1 Series 3-door | kg | 1825 | 1825 [1845] | 1830 [1845] | 1880 [1900] | 1955 [1970] | 1845 | 1845 [1875] | 1845 | 1850 [1875] | 1880 [1900] | 1925 [1940] |
| Max. permissible BMW 1 Series 5-door | kg | 1830 | 1830 [1850] | 1835 [1850] | 1885 [1905] | 1960 [1975] | 1850 | 1850 [1880] | 1850 | 1850 [1880] | 1885 [1905] | 1920 [1935] |
| Permitted load | kg | 530 | 530 | 530 | 530 | 530 | 530 | 530 | 530 | 530 | 530 | 530 |
| Permitted axle load, front / rear | kg | 865 / 1055 | 865 / 1055 | 870 / 1055 | 895 / 1080 | 950 [960] / 1110 | 875 / 1055 | 880 / 1060 | 875 / 1055 | 885 / 1060 | 890 / 1080 | 930 / 1085 [1090] |
| Permitted roof load | kg | 75 | 75 | 75 | 75 | 75 | 75 | 75 | 75 | 75 | 75 | 75 |
| Permitted trailer load, unbraked ² | kg | 650 | 650 | 670 | 680 | — | — | 690 | — | 690 | 710 | 740 |
| Permitted trailer load, braked, max. 12% gradient ² | kg | 1200 | 1200 | 1200 | 1200 | — | — | 1200 | — | 1200 | 1200 | 1200 |
| Permitted trailer load, braked, max. 8% gradient ² | kg | 1200 | 1200 | 1200 | 1200 | — | — | 1200 | — | 1200 | 1200 | 1200 |
| Permitted tow bar download | kg | 75 | 75 | 75 | 75 | — | — | 75 | — | 75 | 75 | 75 |

Engine^{3, 4}

| Cylinders/valves | | 4/4 | 4/4 | 4/4 | 4/4 | 6/4 | 4/4 | 4/4 | 4/4 | 4/4 | 4/4 | 4/4 |
|--------------------------|--------|-----------|---------------|---------------|---------------|---------------|---------------|---------------|---------------|---------------|---------------|---------------|
| Capacity | cc | 1598 | 1598 | 1598 | 1997 | 2979 | 1598 | 1995 | 1598 | 1995 | 1995 | 1995 |
| Stroke/bore | mm | 85.8/77.0 | 85.8/77.0 | 85.8/77.0 | 90.1/84.0 | 89.6/84.0 | 83.6/78.0 | 90.0/84.0 | 83.6/78.0 | 90.0/84.0 | 90.0/84.0 | 90.0/84.0 |
| Max. output/engine speed | kW/rpm | 75/4000 | 100/4400 | 100/4400 | 125/4800 | 160/5000 | 235/5800 | 70/4000 | 85/4000 | 105/4000 | 135/4000 | 160/4400 |
| | hp/rpm | 102/4000 | 136/4400 | 136/4400 | 170/4800 | 218/5000 | 320/5800 | 95/4000 | 116/4000 | 143/4000 | 184/4000 | 218/4400 |
| Max. torque/engine speed | Nm/rpm | 180/1100 | 220/1350-4300 | 250/1350-4500 | 310/1350-4500 | 330/1350-4500 | 235/1500-2750 | 260/1750-2500 | 260/1750-2500 | 320/1750-2500 | 380/1750-2500 | 450/1500-2500 |
| Compression ratio | :1 | 10.5 | 10.5 | 10.5 | 10.0 | 10.2 | 16.5 | 16.5 | 16.5 | 16.5 | 16.5 | 16.5 |

Transmission

| | | | | | | | | | | | | |
|------------------------------|----------|-------------|-------------|-------------|--------------|-------------|--------------|--------------|--------------|--------------|--------------|--------------|
| Manual transmission ratio | III :1 | 4.55/2.55 | 4.55/2.55 | 4.55/2.55 | 3.68/2.06 | 4.11/2.32 | 4.0/2.11 | 4.0/2.11 | 4.0/2.11 | 4.0/2.11 | 4.11/2.25 | 4.11/2.25 |
| | IIIV :1 | 1.66/1.23 | 1.66/1.23 | 1.66/1.23 | 1.31/1.0 | 1.54/1.18 | 1.38/1.0 | 1.38/1.0 | 1.38/1.0 | 1.38/1.0 | 1.40/1.0 | 1.40/1.0 |
| | VM/IR :1 | 1.00/834.14 | 1.00/834.14 | 1.00/834.14 | 0.810/683.35 | 1.00/853.73 | 0.780/653.65 | 0.780/653.65 | 0.780/653.65 | 0.780/653.65 | 0.800/663.73 | 0.800/663.73 |
| Rear axle transmission ratio | :1 | 2.81 | 2.81 | 3.08 | 3.91 | 3.08 | 2.93 | 3.08 | 2.93 | 3.08 | 3.15 | 3.39 |

Performance

| | | | | | | | | | | | | |
|----------------------|------------|-----------|-----------|-----------|-----------|-----------|-----------|-------------|-----------|-----------|-----------|-----------|
| Top speed | mph / km/h | 121 / 195 | 130 / 210 | 140 / 225 | 151 / 243 | 155 / 250 | 115 / 185 | 124 / 200 | 121 / 195 | 132 / 212 | 142 / 228 | 149 / 240 |
| Acceleration 0-62mph | s | 11.2 | 8.5 [8.7] | 7.4 [7.2] | 6.4 [6.2] | 5.1 [4.9] | 12.2 | 10.3 [10.7] | 10.5 | 8.9 | 7.2 [7.3] | 6.5 |

Fuel consumption^{3, 4, 5, 6}

| | | | | | | | | | | | | |
|---------------------------|-------------|-----------|-------------|-------------|-------------|-------------|-------------|-----------|-------------|-----------|-------------|-------------|
| Urban | mpg /100 km | 38.2-39.8 | 38.7-40.4 | 36.7-38.2 | 32.8 [33.2] | 25.2 [27.4] | 56.5-57.6 | 53.3-55.4 | 62.4 | 52.3-55.4 | 50.4-52.3 | 47.1 [49.6] |
| | | 7.1-7.4 | [38.2-39.2] | [38.2-39.8] | 7.0-7.3 | 8.6 [8.5] | 10.9 [10.3] | 4.9-5.0 | [5.3-5.6.5] | 4.4 | [5.3-5.6.4] | [5.4-5.7.6] |
| Extra-urban | mpg /100 km | 60.1-62.8 | 60.1-62.8 | 58.9-60.1 | 52.3 [55.4] | 44.1 [47.9] | 74.3-76.3 | 74.3-78.5 | 83.1 | 72.4-76.3 | 72.4-76.3 | 67.3 |
| | | 4.5-4.7 | [58.9-61.4] | [58.9-61.4] | 4.5-4.7 | 5.4 [5.1] | 6.4 [5.9] | 3.7-3.8 | [3.6-3.8] | 3.4 | [3.7-3.9] | [3.7-3.9] |
| Combined | mpg /100 km | 49.6-51.4 | 49.6-51.4 | 47.9-49.6 | 42.8 [44.8] | 35.3 [37.7] | 65.7-68.9 | 65.7-68.9 | 74.3 | 64.2-68.9 | 62.8-65.7 | 57.6-60.1 |
| | | 5.5-5.7 | [48.7-50.4] | [48.7-50.4] | 5.4-5.6 | 6.6 [6.3] | 8.0 [7.5] | 4.1-4.3 | [4.1-4.4] | 3.8 | [4.2-4.4] | [4.2-4.4] |
| CO ₂ emissions | g/km | 127-132 | 125-131 | 132-137 | 154 [148] | 188 [175] | 109-112 | 109-112 | 99 | 109-115 | 114-119 | 128 [124] |
| Tank capacity, approx. | l | 52 | 52 | 52 | 52 | 52 | 52 | 52 | 52 | 52 | 52 | 52 |

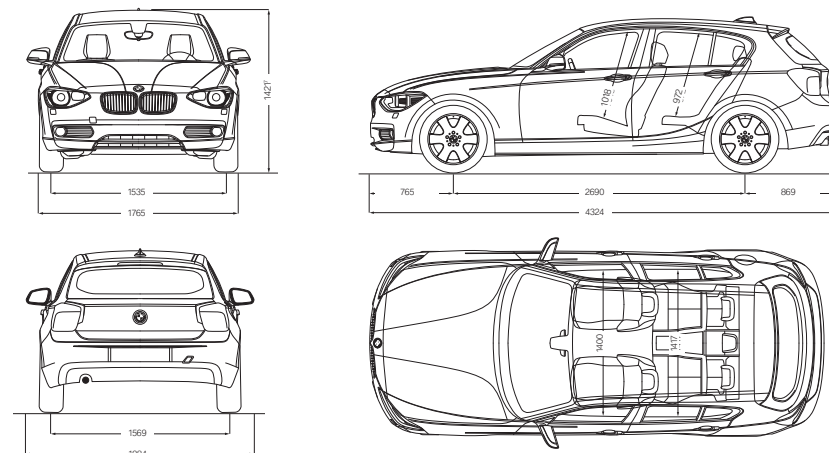
| | | 114i | 116i | 118i | 125i | M135i | 114d | 116d | 116d EfficientDynamics | 118d | 120d | 125d |
|--|--|------|------|------|------|-------|------|------|------------------------|------|------|------|
|--|--|------|------|------|------|-------|------|------|------------------------|------|------|------|

Wheels

| | | | | | | | | | | | | |
|------------------|-------|-------------|-------------|-------------|-------------|-------------|-------------|-------------|-------------|-------------|-------------|-------------|
| Tyre dimensions | Front | 205/55 R16 | 205/55 R16 | 205/55 R16 | 225/40 R18 | 225/40 R18 | 205/55 R16 | 205/55 R16 | 205/55 R16 | 205/55 R16 | 205/55 R16 | 225/40 R18 |
| | Rear | | | 7J x 16 | 7.5J x 18 | 245/35 R18 | | | | | | 245/35 R18 |
| Wheel dimensions | Front | 7J x 16 | 7J x 16 | 7J x 16 | 7.5J x 18 | 7.5J x 18 | 7J x 16 | 7J x 16 | 7J x 16 | 7J x 16 | 7J x 16 | 7.5J x 18 |
| | Rear | | | | 8.5J x 18 | 8J x 18 | | | | | | 8.5J x 18 |
| Material | | Light alloy | Light alloy | Light alloy | Light alloy | Light alloy | Light alloy | Light alloy | Light alloy | Light alloy | Light alloy | Light alloy |

Electrical system

| | | | | | | | | | | | | |
|-------------------|----|------|------|------|------|------|------|------|------|------|------|------|
| Battery capacity | Ah | 80 | 80 | 80 | 80 | 80 | 80 | 80 | 80 | 80 | 80 | 80 |
| Alternator output | A | 170 | 170 | 170 | 170 | 210 | 175 | 180 | 180 | 180 | 180 | 180 |
| | W | 2380 | 2380 | 2380 | 2380 | 2940 | 2450 | 2520 | 2520 | 2520 | 2520 | 2520 |



All dimensions in the technical drawings are given in millimetres (shown here on the BMW 1 Series 5-door model). Luggage compartment capacity approx. 360-1200 litres.

- The figure quoted includes a 90% full tank, 68kg for the driver and 7kg for luggage. Unladen weight applies to vehicles with standard equipment. Optional equipment may increase this figure.
- The actual overall trailer weight may not exceed the max. permitted trailer load, while taking into account the max. permitted tow bar download.
- BMW recommends the use of RON 95 super unleaded petrol. Unleaded fuels RON 91 and higher with a maximum ethanol percentage of 10% may also be used. Output and fuel consumption figures apply to RON 98 fuel.
- All petrol engines comply with the EU6 emissions standard. All diesel engines comply with the EU5 emissions standard. Fuel consumption figures are determined according to the ECCE driving cycle, which consists of approximately one-third urban traffic and two-thirds extra-urban (based on the distance covered). CO₂ emissions are measured in addition to fuel consumption.
- Fuel consumption and CO₂ emissions output are affected by the selected wheel and tyre sizes. Please consult the Price List for further information.
- Technical data for Drive models and models with BluePerformance engines may differ, please consult the price list or ask your BMW Dealer for information.
- Height including roof aerial is 1,440 mm.

Values in [] refer to vehicles with eight-speed automatic transmission.

Condition Based Service. A key feature in most BMW models, Condition Based Service (CBS) signals an innovative leap forward in BMW Service diagnostic technology. The way it works is simple. CBS uses sensors to constantly monitor the areas of your BMW that are subjected to wear and tear. Based on the results of the data, CBS decides the extent to which servicing is necessary. This information is then stored in your vehicle's key. Using a KeyReader, BMW Service staff can download information to provide an accurate analysis of your vehicle. This means your BMW goes for a service only when it needs to, saving you an immeasurable amount of both time and money.

Service Intelligence. BMW Approved Technicians are experts in the use of diagnostic equipment, which quickly identifies if and why the vehicle is running at anything less than peak efficiency. This leads to rapid identification and rectification.

Service Assurance. For additional peace of mind, take comfort in the fact that every new BMW is covered by a three-year warranty³ that includes BMW Emergency Service throughout Europe. For more information on BMW Service, please contact your local BMW Dealer, BMW Service Authorised Workshop or visit www.bmw.co.uk/service.



TAILORED FOR YOUR VEHICLE. BMW SERVICE.



BMW Service Inclusive. Wouldn't it be good to know your comprehensive servicing costs in advance? Well, that's exactly what BMW Service Inclusive¹ provides and for a low one-off payment.

BMW Service Inclusive¹ lasts for 5 years or 50,000 miles (whichever occurs first) and covers all your vehicle's comprehensive servicing requirements. Alternatively you can choose BMW Service Inclusive¹ Plus, which in addition to servicing also covers maintenance items such as brake pads, brake discs and windscreen wipers. And whenever servicing and maintenance work is carried out on your BMW, you can be sure that it will only be done by fully qualified BMW Service Approved Technicians at one of over 150 BMW Service Authorised Workshops around the country. Furthermore, only Genuine BMW Parts are used – each covered by a two year warranty.

BMW Service Inclusive and Service Inclusive Plus are transferable to subsequent owners within the time and mileage period, which can enhance the resale value of your car.²

¹ Service Inclusive and Service Inclusive Plus are available as cost options. Terms and conditions apply, for full details speak to your dealer or visit

www.bmw.co.uk/serviceinclusive

² For further information, please contact your local BMW Dealer.

³ Every new BMW registered within the Republic of Ireland is covered by a two-year manufacturer's warranty - for details, please contact your local BMW Dealer.



BMW ConnectedDrive Services. Function using the built-in BMW SIM card to provide telematic and online services that are fully integrated into your BMW vehicle. All services require connection to a UK mobile network. Some services are available in other European countries. The range of ConnectedDrive Services that are available depends on the specification of the vehicle. The service duration varies depending on the ConnectedDrive Service.

For further information on BMW ConnectedDrive Services and terms and conditions please visit www.bmw.co.uk/connecteddrive-information



BMW Emergency Service. BMW Emergency Service is the only roadside and assistance programme designed specifically for BMW vehicles offering an exceptional range of benefits and services. It is available 24 hours a day, 7 days a week and utilises a dedicated fleet of BMW Approved Technicians, equipped with Genuine Parts and tools, ensuring that you and your vehicle receive the best possible care in the event of any motoring emergency. This tailor-made programme has been specifically designed to meet the needs of BMW drivers travelling in the UK, Republic of Ireland and Continental Europe giving complete reassurance and peace of mind. Every new BMW is covered for three years.



BMW Financial Services. BMW Financial Services offers a range of solutions designed to help you drive the BMW of your choice. All our products offer you the flexibility to customise your finance, making driving away a BMW a reality. After all, who knows more about financing your BMW than BMW.

If you would like more information, visit www.bmwfs.co.uk. Here, you will also find details of our comprehensive range of products engineered for every eventuality.

You can view all of our current offers at the touch of a button using the BMW Financial Services Offers App. Download it now for free.



**BMW
FINANCIAL
SERVICES.**

Finance is subject to status and available to over 18's in the UK only (not the Channel Islands or the Isle of Man). Guarantees and indemnities may be required. Advertised finance is provided by BMW Financial Services, Bartley Way, Hook, Hampshire RG27 9UF.



BMW Magazine. Every new BMW customer receives a complimentary subscription to BMW Magazine. This publication features all the latest news and developments from BMW, together with a variety of driving and lifestyle features.

BMW News. To ensure you're one of the first to hear the latest BMW news and developments, BMW UK offer an email programme. Sign-up at www.bmw.co.uk/newsletter



BMW World, an iconic building in the Munich skyline. The BMW World is a true brand experience where it's possible to marvel at the historic BMWs in the museum, learn about our engineers' newest innovations and take a tour of the plant to experience with your own eyes the cutting-edge and exacting methods used to create a BMW.

SHAPING THE FUTURE – RESPONSIBLY.

The BMW Group has been ranked the most sustainable automotive company worldwide in the Dow Jones Sustainability Index for the sixth time in a row. Sustainability is an integral part of our value chain: from the development of efficiency and alternative vehicle concepts to environmentally-friendly production processes and recycling. Our research and development philosophy BMW EfficientDynamics delivers tangible benefits to customers, our climate and the environment. This is reflected in the reduction of CO₂ emissions by around 30% since 1995 within our European fleet of new cars.

Because vehicle manufacturing requires a lot of water, we have developed intelligent circulation systems for our plants to recycle it as often as possible. We have already achieved our goal of zero waste water production at our engine plant in Steyr where, in 2008, 733,500 engines were manufactured without any waste water.

Sustainability is a key concern for the BMW Group. This is why we rely primarily on environmentally friendly means of transportation such as rail and ships. For instance, we cover approximately 15.8 billion tonne-

kilometres annually transporting materials and new vehicles and 79% of the entire volume is conveyed by sea. This eases the burden on roads and the environment. The BMW Group is always looking to the future, so your BMW is part of an extensive recycling concept where every vehicle can be recycled easily and economically. To hand back your end-of-life vehicle, please contact your BMW Dealer. Further information is available at:

www.bmw.com/recycling
www.bmw.co.uk/EfficientDynamics

More about BMW



The Ultimate Driving Machine

www.bmw.co.uk
www.bmw.ie



The models illustrated in this Brochure show the specifications of vehicles produced by BMW AG for the German market. In part, they include optional equipment and accessories not fitted as standard. According to the specific requirements of the markets of other European Union member states, alterations in models, standard and optional equipment, may occur. For more precise information about country-specific vehicle versions, please contact your local BMW Dealer. Subject to change in design and equipment. Part number 94 23 1 142 021. March 2014.
© BMW AG, Munich, Germany. Not to be reproduced wholly or in part without written permission of BMW AG, Munich.

BMW recommends  **EDGE**

